



Correction to: Surgical and oncological outcomes after complete mesocolic excision in right-sided colon cancer compared with conventional surgery: a retrospective, single-institution study

Tommaso Zurleni¹ · Alberto Cassiano¹ · Elson Gjoni¹ · Andrea Ballabio¹ · Giovanni Serio² · Luca Marzoli³ · Francesco Zurleni¹

Published online: 7 December 2017
© Springer-Verlag GmbH Germany, part of Springer Nature 2017

Correction to: Int J Colorectal Dis <https://doi.org/10.1007/s00384-017-2917-2>

The publisher regrets that the following errors were introduced during the production process:

The value in Table 1 for *Caecum* originally reading “35(36.1%)” should have read “45(47.4%)” and in Table 3, the value for *Prolonged ileus* was “2(2.1%) should be “0(0.0%)” under the column “non-CME (*n* = 95)”.

The correct Tables are as follows:

The online version of the original article can be found at <https://doi.org/10.1007/s00384-017-2917-2>

✉ Tommaso Zurleni
tzurleni@yahoo.it

¹ Department of General Surgery, Hospital of Busto Arsizio (Va), Piazzale Solaro 3, 21052 Busto Arsizio, Italy

² Department of Anatomical Pathology, Hospital of Busto Arsizio, Busto Arsizio, Italy

³ Department of Medical Physics, Hospital of Busto Arsizio, Busto Arsizio, Italy

Table 1 Clinicopathological characteristics

	CME (<i>n</i> = 97)	Non-CME CME (<i>n</i> = 95)	<i>p</i> -value
Age, mean (years)	71	73	<0.05
Gender, <i>n</i> (%)			0.38
female	50 (51.5%)	43 (45%)	
male	47 (48.5%)	52 (54%)	
Location of tumour, <i>n</i> (%)			0.46
Caecum	35 (36.1%)	45 (47.4%)	
Ascending colon	33 (34.0%)	27 (28.4%)	
Hepatic flexure	13 (13.4%)	10 (10.5%)	
(Proximal) Right transverse	16 (16.5%)	13 (13.7%)	
Liver metastasis Resection	6 (6.2%)	5 (5.3%)	
Operative time (min)	182	171	<0.05
Length of stay (days)	13.07	12.71	0.51
Histology type <i>n</i> (%)			0.41
Adenoca Well Diff.	4 (4.1%)	2 (2.1%)	
Adenoca Med Diff.	65 (67.0%)	75 (78.9%)	
Adenoca Poor Diff.	19 (19.6%)	13 (13.7%)	
Mucinous adenoca	7 (7.2%)	5 (5.3%)	
Others	2		
TNM (AJCC 7th ed), <i>n</i> (%)			0.55
I	22 (22.7%)	14 (14.7%)	
II	35 (36.1%)	40 (42.1%)	
III	32 (33.0%)	33 (34.7%)	
IV	8 (8.2%)	8 (8.4%)	
pT category, <i>n</i> (%)			0.68
pT1	10 (10.3%)	8 (8.4%)	
pT2	16 (16.5%)	13 (13.7%)	
pT3	53 (54.6%)	53 (55.8%)	
pT4a	15 (15.5%)	15 (15.8%)	
pT4b	3 (3.1%)	6 (6.3%)	
pN category, <i>n</i> (%)			0.95
pN0	57 (58.8%)	54 (56.8%)	
pN1a	12 (12.4%)	12 (12.6%)	
pN1b	12 (12.4%)	11 (11.6%)	
pN2a	9 (9.3%)	8 (8.4%)	
pN2b	3 (3.1%)	6 (6.3%)	
pM category, <i>n</i> (%)			0.86
M0	89 (91.8%)	87 (91.6%)	
M1a	6 (6.2%)	5 (5.3%)	
M1b	2 (2.1%)	3 (3.2%)	

Table 3 Postoperative complications and mortality

	CME (n = 97)	non-CME (n = 95)
Anastomotic leakage	0 (0.0%)	1 (1.1%)
Fascial wound dehiscence	2 (2.1%)	1 (1.1%)
Intra-abdominal bleeding	1 (1.0%)	2 (2.1%)
Prolonged ileus	1 (1.0%)	0 (0.0%)
Wound infection	6 (6.1%)	4 (4.2%)
Major non-surgical complications	11 (11.3%)	9 (9.4%)
Total postoperative complications	21 (21.6%)	17 (17.8%)
Reoperation	3 (3.1%)	3 (3.2%)
Postoperative (30 days) mortality	1 (1.0%)	0 (0.0%)

In the figures, the legends for Fig. 3 should have read “**a** OS t 3 years (88% vs 71%) **b** DSS at 3 years (92% vs 80%)” and Fig. 4 was changed to “**a** DSS at 3 years in stage II (97% vs 86%)”

86%) **b** DSS at 3 years in stage III (86% vs 67%)”. The images for Fig. 3a and b was inverted. The correct presentation of the images and legends are shown below:

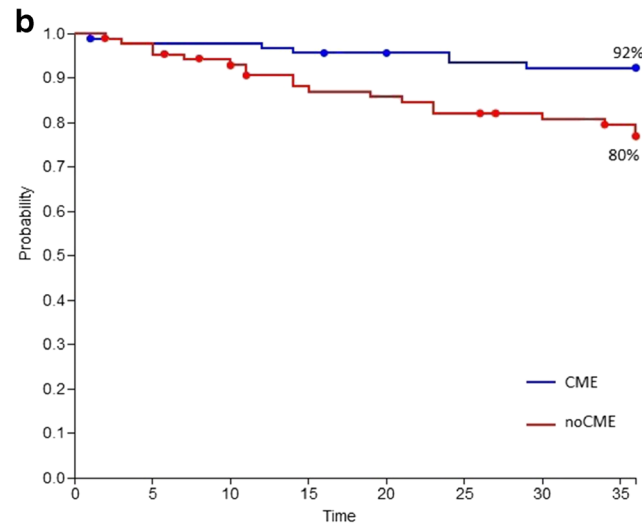
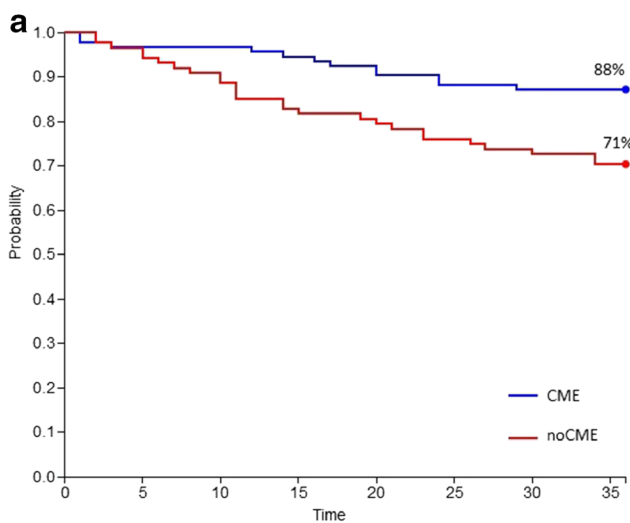


Fig. 3 a OS at 3 years (88% vs 71%) **b** DSS at 3 years (92% vs 80%)

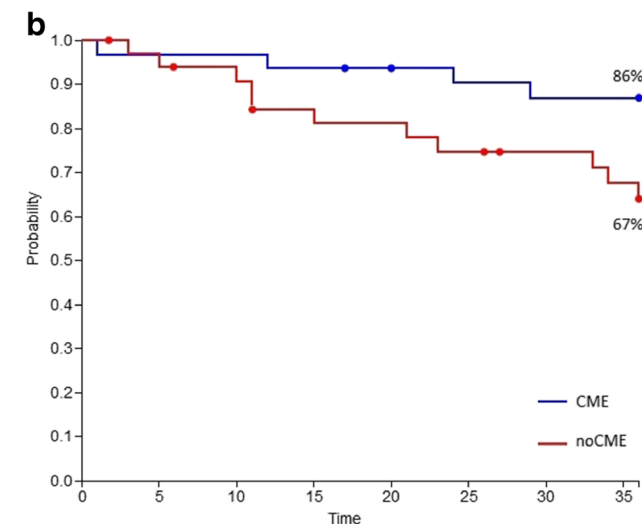
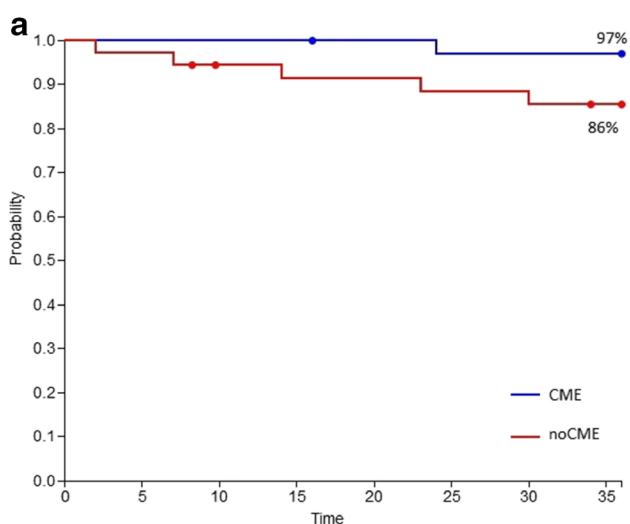


Fig. 4 a DSS at 3 years in stage II (97% vs 86%) **b** DSS at 3 years in stage III (86% vs 67%)

The original article has been corrected.