

Erratum to: Three-pattern decomposition of global atmospheric circulation: part I—decomposition model and theorems

Shujuan Hu¹ · Jifan Chou¹ · Jianbo Cheng¹

Published online: 1 March 2017
© Springer-Verlag Berlin Heidelberg 2017

Erratum to: Clim Dyn
DOI [10.1007/s00382-015-2818-4](https://doi.org/10.1007/s00382-015-2818-4)

In the original publication of the article, Figs. 3, 4a, b, 5 are published incorrectly. The correct versions of Figs. 3, 4 and 5 are given in this erratum. We believe that this error correction will not alter the main messages of the paper.

The online version of the original article can be found under doi:[10.1007/s00382-015-2818-4](https://doi.org/10.1007/s00382-015-2818-4).

✉ Shujuan Hu
hushuju@lzu.edu.cn

¹ College of Atmospheric Sciences, Lanzhou University, Lanzhou 730000, China

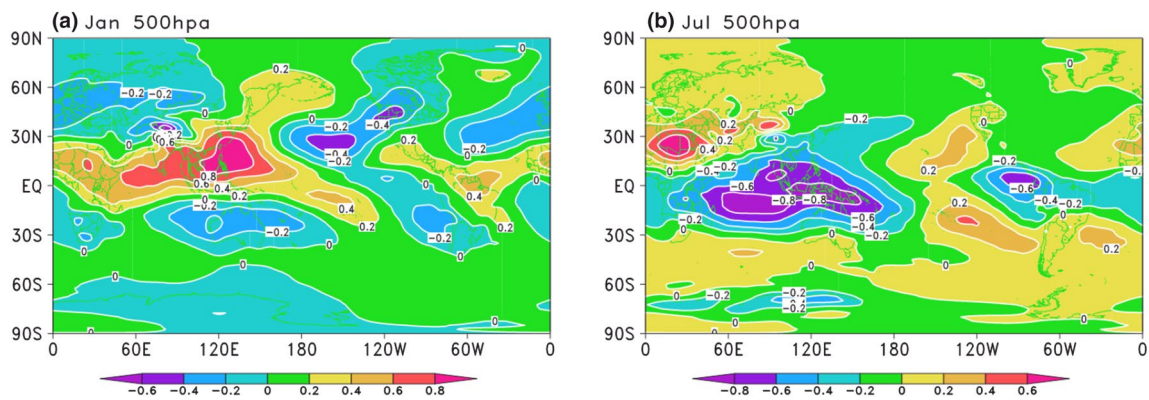


Fig. 3 The climatological-mean of stream function H in **a** January and **b** July (1948–2011), where the unit of H is 10^{-6} s^{-1}

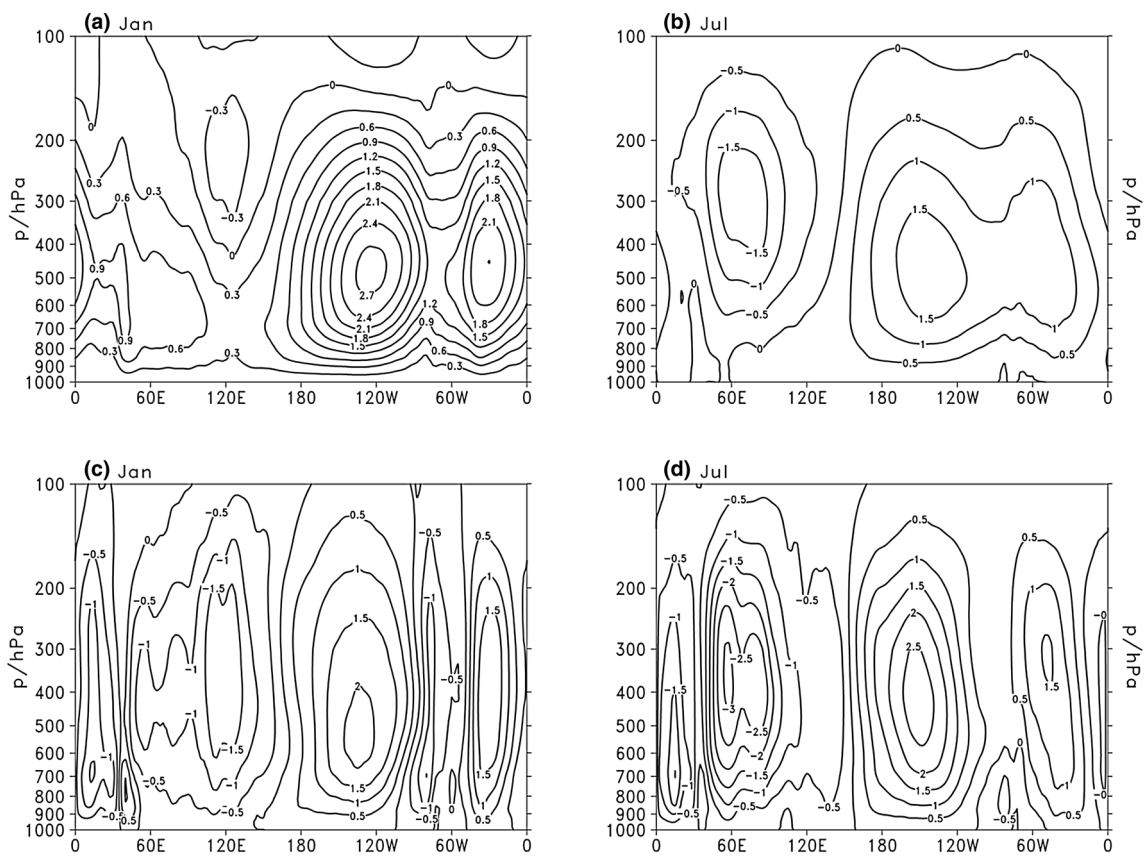


Fig. 4 The climatological-mean meridional-mean of stream function W between 10°N and 10°S in **a** January and **b** July (1948–2011), **c** and **d** are the same as **a** and **b** but here for traditional mass stream

function ψ_W calculated from the NCEP/NCAR reanalysis data by Eq. (4.3). The unit of W is 10^{-6} s^{-1} , and the unit of ψ_W is $10^{11} \text{ kg s}^{-1}$

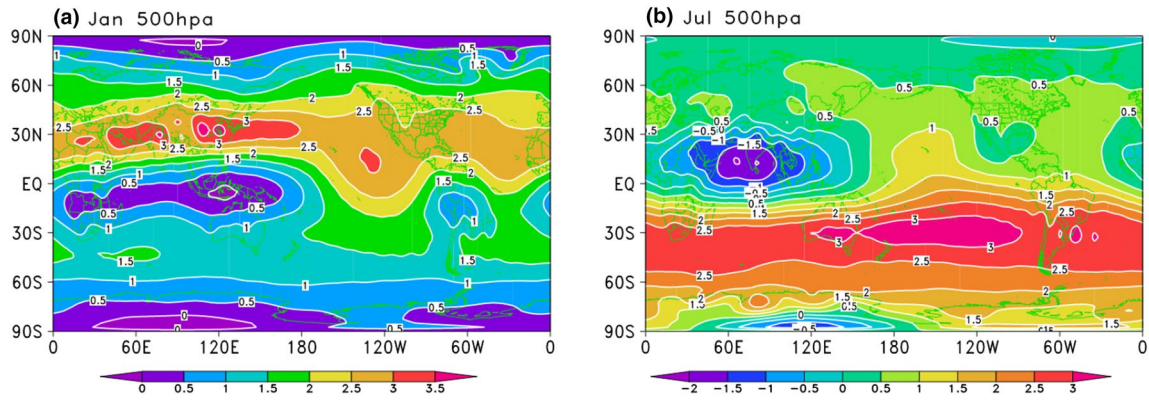


Fig. 5 The climatological-mean of stream function W in **a** January and **b** July (1948–2011), where the unit of W is 10^{-6} s^{-1}