



Correction to: Congenital pial AVF along the falx cerebri with complete agenesis of the corpus callosum and bilateral parasagittal pachygyria-polymicrogyria secondary to chronic ischemia

Pei Ing Ngam¹ · Syed Shahzad Hussain¹ · Ai Peng Tan^{1,2} 

Published online: 29 January 2019

© Springer-Verlag GmbH Germany, part of Springer Nature 2019

Correction to: Child's Nervous System

<https://doi.org/10.1007/s00381-018-4019-z>

The article which was recently published contained error. Figure 1 was incorrectly processed as Fig. 2, resulting to identical figures during the publication the paper. Given in this article are the correct figures.

The original article has been corrected.

The online version of the original article can be found at <https://doi.org/10.1007/s00381-018-4019-z>

✉ Ai Peng Tan
ai_peng_tan@nuhs.edu.sg

Pei Ing Ngam
pei_ing_ngam@nuhs.edu.sg

Syed Shahzad Hussain
syed_shahzad_hussain@nuhs.edu.sg

¹ Department of Diagnostic Imaging, National University Health System, 1E Kent Ridge Rd, Singapore 119228, Singapore

² Yong Loo Lin School of Medicine, National University of Singapore (NUS), Singapore, Singapore

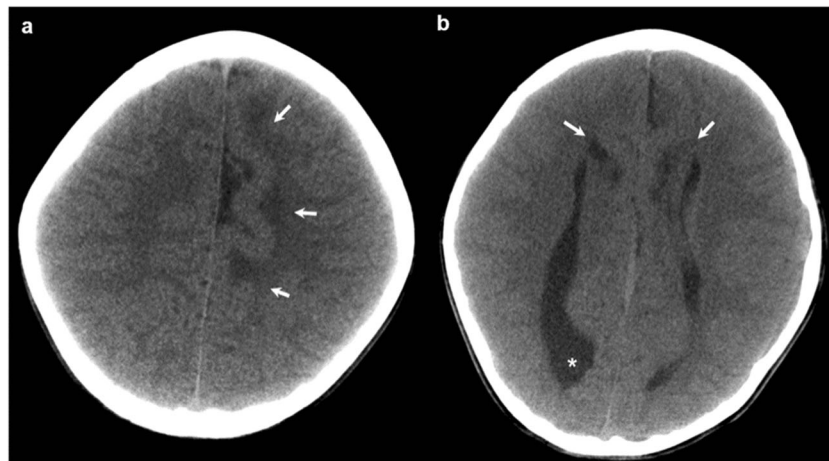


Fig. 1 **a, b** Axial CT images of the brain demonstrate the presence of abnormal gyral-sulcation pattern in the medial/parasagittal frontoparietal lobes with areas of low densities within the underlying white matter

(arrows), as well as parallel appearance of the lateral ventricles and colpocephaly (*), in keeping with complete agenesis of the corpus callosum

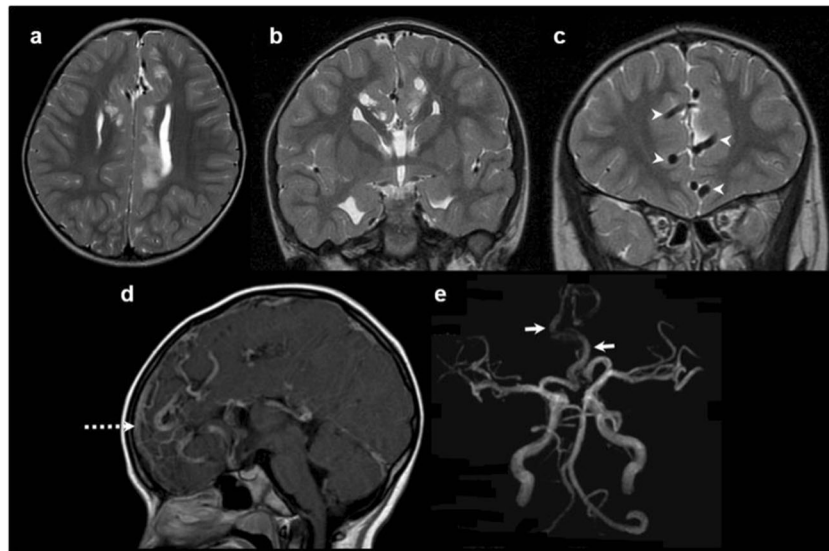


Fig. 2 **a-c:** **a** Axial and **b, c** coronal T2-weighted images of the brain confirmed the presence of polymicrogyria-pachygyria in the medial/parasagittal frontoparietal lobes, signal abnormalities within the underlying white matter, and complete agenesis of the corpus callosum. In addition, enlarged and tortuous vessels (arrowheads) are seen along the interhemispheric falx, with no appreciable nidus. **d** Midline sagittal

postcontrast T1-weighted image showed enlarged and tortuous vessels along the interhemispheric falx. There is also mild prominence of the anterior superior sagittal sinus (dotted arrow). **e** Time of flight magnetic resonance angiogram of the circle of Willis revealed enlargement of the bilateral anterior cerebral arteries (solid arrows), supplying the network of abnormal vessels along the falx