

• Original Paper •

Interdecadal Modulation of AMO on the Winter North Pacific Oscillation–Following Winter ENSO Relationship

Shangfeng CHEN^{1,3}, Linye SONG², and Wen CHEN^{1,3}

¹*Center for Monsoon System Research, Institute of Atmospheric Physics,
Chinese Academy of Sciences, Beijing 100029, China*

²*Institute of Urban Meteorology, China Meteorological Administration, Beijing 100089, China*

³*College of Earth and Planetary Sciences, University of Chinese Academy of Sciences, Beijing 100049, China*

(Received 20 April 2019; revised 19 July 2019; accepted 8 August 2019)

ABSTRACT

It is known that the wintertime North Pacific Oscillation (NPO) is an important extratropical forcing for the occurrence of an El Niño–Southern Oscillation (ENSO) event in the subsequent winter via the “seasonal footprinting mechanism” (SFM). This study reveals that the Atlantic Multidecadal Oscillation (AMO) can notably modulate the relationship between the winter NPO and the following winter ENSO. During the negative AMO phase, the winter NPO has significant impacts on the following winter ENSO via the SFM. In contrast, the influence of the winter NPO on ENSO is not robust at all during the positive AMO phase. Winter NPO-generated westerly wind anomalies over the equatorial western Pacific during the following spring are much stronger during negative than positive AMO phases. It is suggested that the AMO impacts the winter NPO-induced equatorial westerly winds over the western Pacific via modulating the precipitation climatology over the tropical central Pacific and via modulating the connection of the winter NPO with spring sea surface temperature in the tropical North Atlantic.

Key words: North Pacific Oscillation, ENSO, Atlantic Multidecadal Oscillation

Citation: Chen, S. F., L. Y. Song, and W. Chen, 2019: Interdecadal modulation of AMO on the winter North Pacific Oscillation–following winter ENSO relationship. *Adv. Atmos. Sci.*, **36**(12), 1393–1403, <https://doi.org/10.1007/s00376-019-9090-1>.

Article Highlights:

- The AMO has a pronounced modulation effect on the impact of the winter NPO on the following winter ENSO.
- A significant impact of the winter NPO on the following winter ENSO can only be observed during the negative AMO phase.
- The effect of the AMO on the NPO–ENSO relationship is through modulating the NPO-generated westerly winds over the tropical western Pacific.

1. Introduction

El Niño–Southern Oscillation (ENSO) is the strongest interannual variability of air–sea coupled systems in the tropics (e.g., Bjerknes, 1969; Neelin et al., 1998; McPhaden, 2004). Many studies have suggested that ENSO can exert notable influences on extreme weather events, ecosystems, coral reefs, fisheries, and fire risks over many regions of the globe (e.g., Wang et al., 2000; Alexander et al., 2002; Chiang and Sobel, 2002; Graf and Zanchettin, 2012; Chen et al., 2013a; Burn and Whitfield, 2015; Barbero et al., 2015; and references therein). Therefore, identifying the factors re-

sponsible for the variability of ENSO is of great scientific importance. On the one hand, it is well recognized that the positive air–sea interaction and the oceanic dynamics in the tropical Pacific are important in forming and maintaining the ENSO cycle (Bjerknes, 1969; Schopf and Suarez, 1988; Battisti and Hirst, 1989; Jin, 1997). On the other hand, studies have also indicated that extratropical atmospheric forcings are crucial to the occurrence of ENSO (Vimont et al., 2001, 2003; Anderson, 2003; Anderson and Maloney, 2006; Nakamura et al., 2006; Alexander et al., 2010; Chen et al., 2014, 2015, 2018a, 2018b).

Regarding the extratropical atmospheric forcings for ENSO occurrence, several studies have demonstrated that the winter North Pacific Oscillation (NPO, Fig. 1a), an important atmospheric intrinsic variability (Rogers, 1981; Linkin

* Corresponding author: Shangfeng CHEN
Email: chenshangfeng@mail.iap.ac.cn

and Nigam, 2008; Song et al., 2016; Chen and Song, 2018), is able to impact the occurrence of ENSO in the following winter via the so-called “seasonal footprinting mechanism” (SFM) (Fig. 1b, Vimont et al., 2001; 2003; Alexander et al., 2010). In particular, as indicated by Vimont et al. (2001, 2003), the wintertime NPO-related atmospheric circulation anomalies can induce significant sea surface temperature (SST) anomalies over the tropical North Pacific during the following spring via changing the surface net heat flux, which in turn forces the overlying atmospheric circulation, including the westerly wind anomalies over the equatorial western Pacific (EWP). The westerly wind anomalies over the EWP further impact the outbreak of ENSO in the following winter via triggering an eastward propagating equatorial warm Kelvin wave (EWKW) (Vimont et al., 2003).

Alexander et al. (2010) examined the connection between the winter NPO and ENSO through a coupled model. They found that about 70% of the model ensemble simulations reproduced the observed winter NPO-related SST anomalies in the tropical central-eastern Pacific (TCEP) during the following winter. In addition, Park et al. (2013) reported that about 41% of positive winter NPO years correspond to El Niño events during the following winter, which im-

plies that the other 59% are not followed by El Niño events. The above evidence indicates that anomalous winter NPO years do not always correspond to an ENSO event during the following winter. Hence, the relationship between the winter NPO and ENSO might be modulated by other factors. Identifying the possible modulation effect of other factors has important implications for the prediction of ENSO based on the preceding winter NPO.

Several recent studies have found that the Atlantic Multidecadal Oscillation (AMO) (Kerr, 2000; Enfield et al., 2001), the leading SST variability over the North Atlantic on the multidecadal time scale, may significantly modulate the interannual relationships between ENSO and global climate systems (e.g., Geng et al., 2017; Li et al., 2018; Park and Li, 2019). For example, Geng et al. (2017) indicated that the connection between winter La Niña and the East Asian winter monsoon is strong (weak) during positive (negative) AMO phases. Park and Li (2019) suggested that the impact of ENSO on the SST in the tropical northern Atlantic (TNA) is strong (weak) during negative (positive) AMO phase. The above evidences motivate us to examine the interesting question of whether the AMO can modulate the relationship between the winter NPO and the following winter ENSO. In other words, this paper investigates modulation the AMO on the winter NPO–following winter ENSO connection.

2. Data and methods

The monthly SST data are from NOAA’s ERSST.v3b dataset (Smith et al., 2008). ERSST.v3b is available from 1854 to the present day. The monthly mean atmospheric circulation and precipitation data are from the NCEP–NCAR reanalysis dataset (Kalnay et al., 1996). These data from NCEP–NCAR are available from 1948 to the present. The monthly smoothed AMO index is from the Physical Sciences Division of NOAA and spans from 1861 to 2013 (<https://www.esrl.noaa.gov/psd/data/timeseries/AMO/>). The monthly PDO index is from the Joint Institute for the Study of the Atmosphere and Ocean and covers the period of 1900–2017 (<http://jisao.washington.edu/pdo/PDO.latest>).

As in Furtado et al. (2012), the winter [December–January–February (DJF)] average NPO index is defined as the difference in the area-averaged SLP anomaly between (55° – 72.5° N, 180° – 140° W) and (15° – 27.5° N, 175° E– 147.5° W). Results obtained in this study are not sensitive to reasonable changes of the above regions used to define the NPO index. In addition, using the EOF method to define the NPO index can also obtain similar results (not shown). The winter Niño3.4 index is defined as the area-mean SST anomaly over (5° S– 5° N, 170° – 120° W). The NPO index, Niño3.4 index, SST, winds, and precipitation fields were subjected to a 7-yr high-pass Lanczos filter to extract their interannual variations (Duchon, 1979). The significance levels of the correlation and regression coefficients were estimated based on the two-tailed Student’s *t*-test.

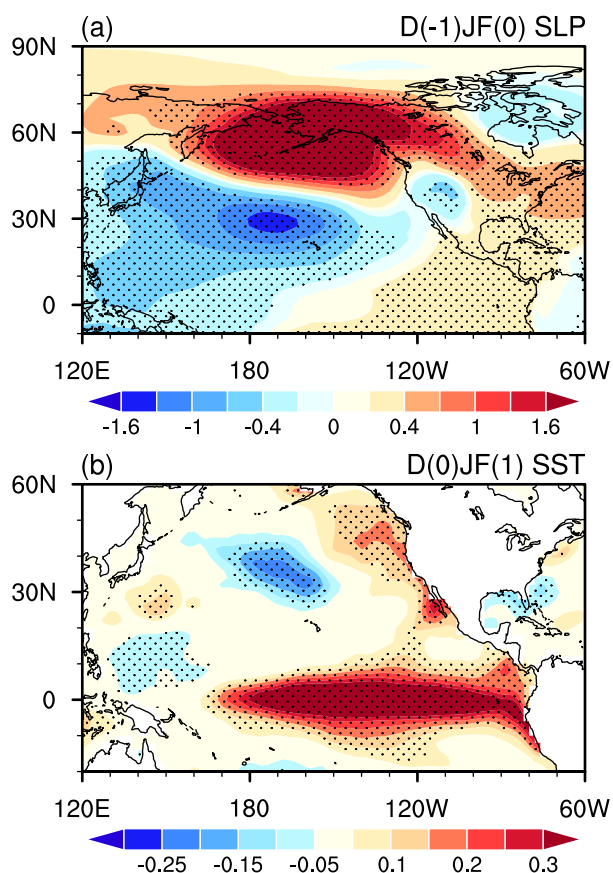


Fig. 1. Regression of (a) SLP anomalies (units: hPa) in D(-1)JF(0) and (b) SST anomalies (units: °C) in D(0)JF(1) onto the normalized D(-1)JF(0) NPO index during 1950–2016. Stippled regions indicate anomalies significant at the 5% level.

3. Modulation of the AMO on the connection between the winter NPO and subsequent winter ENSO

The correlation coefficient between the winter [D(-1)JF(0)] NPO index and following winter [D(0)JF(1)] Niño3.4 index is about 0.47 during 1950–2016, significant at the 5% level (Fig. 2). This indicates that the winter NPO has a close connection with the subsequent winter ENSO, consistent with previous findings (e.g., Vimont et al., 2001, 2003).

We further examine the modulation effect of the AMO on the winter NPO–ENSO relationship. Figure 3a displays the 15-yr moving correlation coefficients of the winter NPO index with the following winter Niño3.4 index. The winter NPO index has a statistically significant correlation with the following winter Niño3.4 index from the early-1960s to the late-1990s (except around the early-1980s) (Fig. 2a), generally corresponding to the negative phase of the AMO (-AMO) (Fig. 2b). Furthermore, the connection between the winter NPO and the following winter ENSO is weak before the early-1960s and after the late-1990s (Fig. 2a), which corresponds to the positive AMO (+AMO) phase (Fig. 2b). Here, +AMO (-AMO) phases are considered as those years when the winter AMO index is larger (smaller) than zero. In particular, during the +AMO phase, the correlation coefficient between the winter NPO index and the following winter Niño3.4 index is weak (Fig. 4a; $r = 0.19$). In contrast, the winter NPO index has a strong positive correlation with the following winter Niño3.4 index during the -AMO phase, with the correlation coefficient reaching 0.6, significant at the 1% level (Fig. 4b). The above evidence suggests that the AMO has a notable effect on the NPO–ENSO

relationship. It should be mentioned that, during the period from the early- to mid-1980s, which corresponds to the -AMO phase, the winter NPO has a weak correlation with the following winter Niño3.4 index. This suggests that the variation of the AMO cannot fully explain the change in the NPO–ENSO relationship. Besides the AMO, other factors may also play an important role in modulating the relationship between the winter NPO and the following winter ENSO. For example, Chen et al. (2013b) indicated that the spring Arctic Oscillation has a notable modulation effect on the NPO-related SFM. The combined impact of the AMO and other factors on the NPO–ENSO relationship remains to be explored.

4. Mechanism responsible for the impact of the AMO on the NPO–ENSO relationship

This section further analyzes the possible mechanisms responsible for the modulation by the AMO. We compare the evolutions of the SST, precipitation and 850-hPa wind anomalies associated with the winter NPO during +AMO and -AMO, separately (Figs. 5 and 6). The evolutions of the SST, precipitation, and 850-hPa wind anomalies during -AMO are similar to those associated with the SFM as indicated by previous studies (Figs. 5e–h and 6e–h) (e.g., Vimont et al., 2001, 2003). In particular, a positive winter NPO, with an anomalous anticyclone over the midlatitudes and cyclone over the subtropics of the North Pacific (Fig. 1a) can lead to a tripole SST anomaly pattern in the North Pacific during the following spring via change in the surface net heat flux (not shown) (Fig. 5e). Enhanced atmospheric

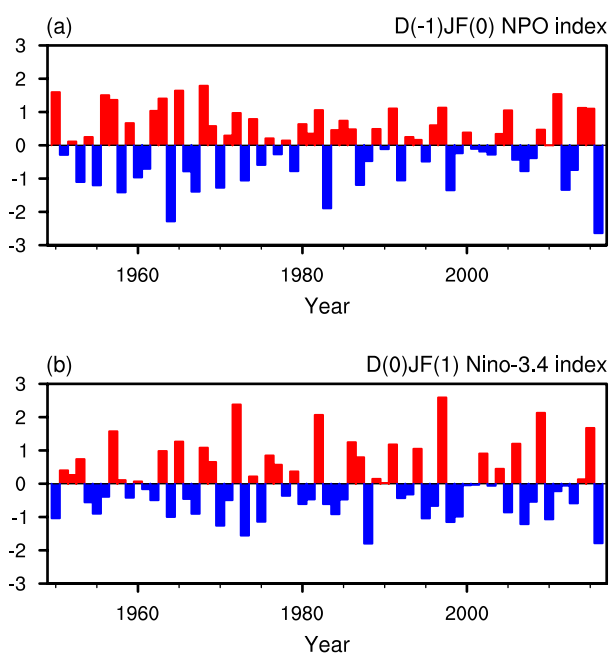


Fig. 2. Standardized time series of (a) winter NPO index and (b) following winter Niño3.4 index.

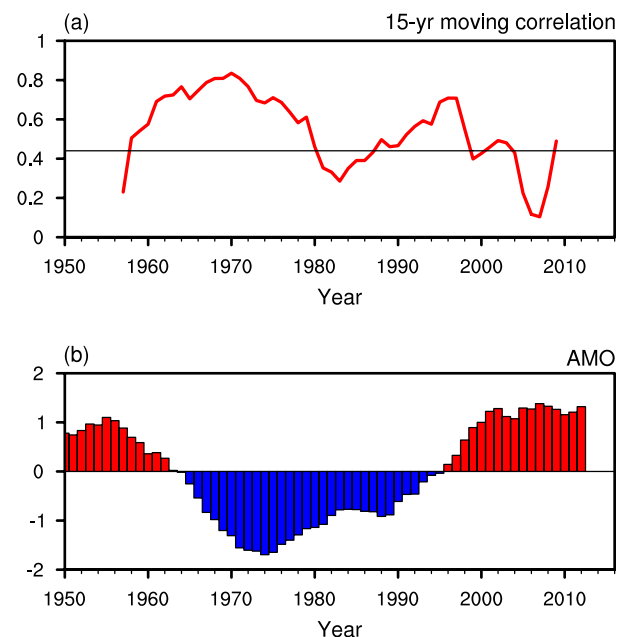


Fig. 3. (a) Fifteen-year moving correlation coefficient between the D(-1)JF(0) NPO index and D(0)JF(1) Niño3.4 index. The horizontal black line indicates the correlation significant at the 10% level. (b) The smoothed AMO index obtained from NOAA.

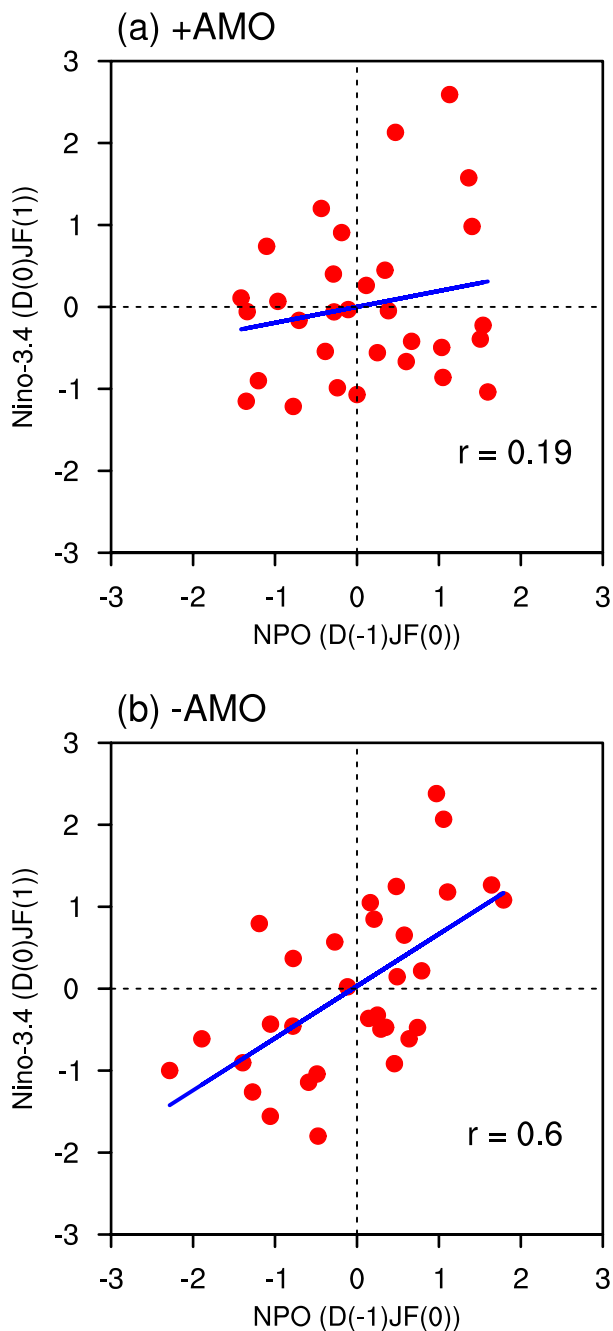


Fig. 4. Scatterplots of the winter NPO index against the following winter Niño3.4 index during (a) +AMO and (b) -AMO phases.

heating (represented by positive precipitation anomalies; Fig. 6e) related to the SST warming over the tropical central North Pacific during spring further induces a cyclonic anomaly over the tropical western North Pacific and westerly wind anomalies over the EWP (Fig. 6e) via a Gill-type atmospheric response. As indicated by Gill (1980), tropical atmospheric heating anomalies can induce a cyclonic anomaly to the northwest and northeast. The strong westerly wind anomalies over the EWP contribute to SST warming in the TCEP during the following summer via triggering an EWKW (Vimont et al., 2003; Lengaigne et al., 2004; Alexander et al., 2010), which can maintain and develop into an El Niño

event in the subsequent winter via Bjerknes-like positive air-sea feedback (Bjerknes, 1969).

During +AMO, a tripole SST anomaly pattern can also be found in the North Pacific during spring (Fig. 5a). The amplitude of the SST warming in the tropical central North Pacific is comparable for the +AMO and -AMO phases (Figs. 5a and e). However, the positive precipitation anomalies over the tropical central North Pacific, the cyclonic anomaly over the tropical western Pacific, and the westerly wind anomalies over the EWP are much weaker during +AMO than -AMO (Figs. 6a and e). Correspondingly, the generated SST warming in the TCEP during the following summer is weaker during +AMO (Figs. 5b and f). As such, positive air-sea feedback cannot be well established in the tropics and an El Niño event cannot be induced in the following winter during +AMO (Figs. 5b-d and 6b-d). Hence, the impact of the winter NPO on the following winter ENSO is weak during +AMO.

The SST anomaly patterns in the TCEP in Figs. 5a and e bear several resemblances to the La Niña decaying phase-associated counterparts. It is known that ENSO has a strong autocorrelation (i.e., quasibiennial variability). In addition, studies have demonstrated that ENSO-related SST anomalies can exert an impact on the extratropical atmospheric anomalies (e.g., Alexander et al., 2002; Jia et al., 2009). But is the modulation effect of the AMO on the NPO-ENSO relationship impacted by the winter ENSO cycle? To address this issue, we removed the D(-1)JF(0) ENSO signal (represented by the Niño3.4 index) from the D(-1)JF(0) NPO index and all analyses fields by linear regression. Then, we re-examined the evolutions of the SST, 850-hPa wind, and precipitation anomalies from MAM(0) to D(0)JF(1) during different phases of the AMO (figures not shown). The results showed that the AMO still has an obvious modulation effect on the NPO-ENSO relationship after removal of the preceding winter ENSO signal. In particular, a significant impact of the winter NPO on the following winter ENSO can only be observed during the -AMO phase. This result suggests that modulation of the NPO-ENSO relationship by the AMO is independent of the ENSO cycle.

The above analyses indicate that the AMO may impact the winter NPO-ENSO relationship via modulating the winter NPO-related spring precipitation anomalies over the tropical central North Pacific and westerly wind anomalies over the EWP. Stronger spring positive precipitation anomalies over the tropical central North Pacific during -AMO could induce stronger spring westerly wind anomalies over the EWP, which exert a more significant impact on the occurrence of ENSO in the following winter. A further question is: what are the possible factors responsible for the differences in the winter-NPO-related spring positive precipitation anomalies over the tropical central North Pacific and westerly wind anomalies over the EWP during different AMO phases? It should be mentioned that the SST warming over the tropical North Pacific is similar during +AMO and -AMO (Figs. 5a and e). This indicates that changes in the winter NPO-related precipitation anomalies over the trop-

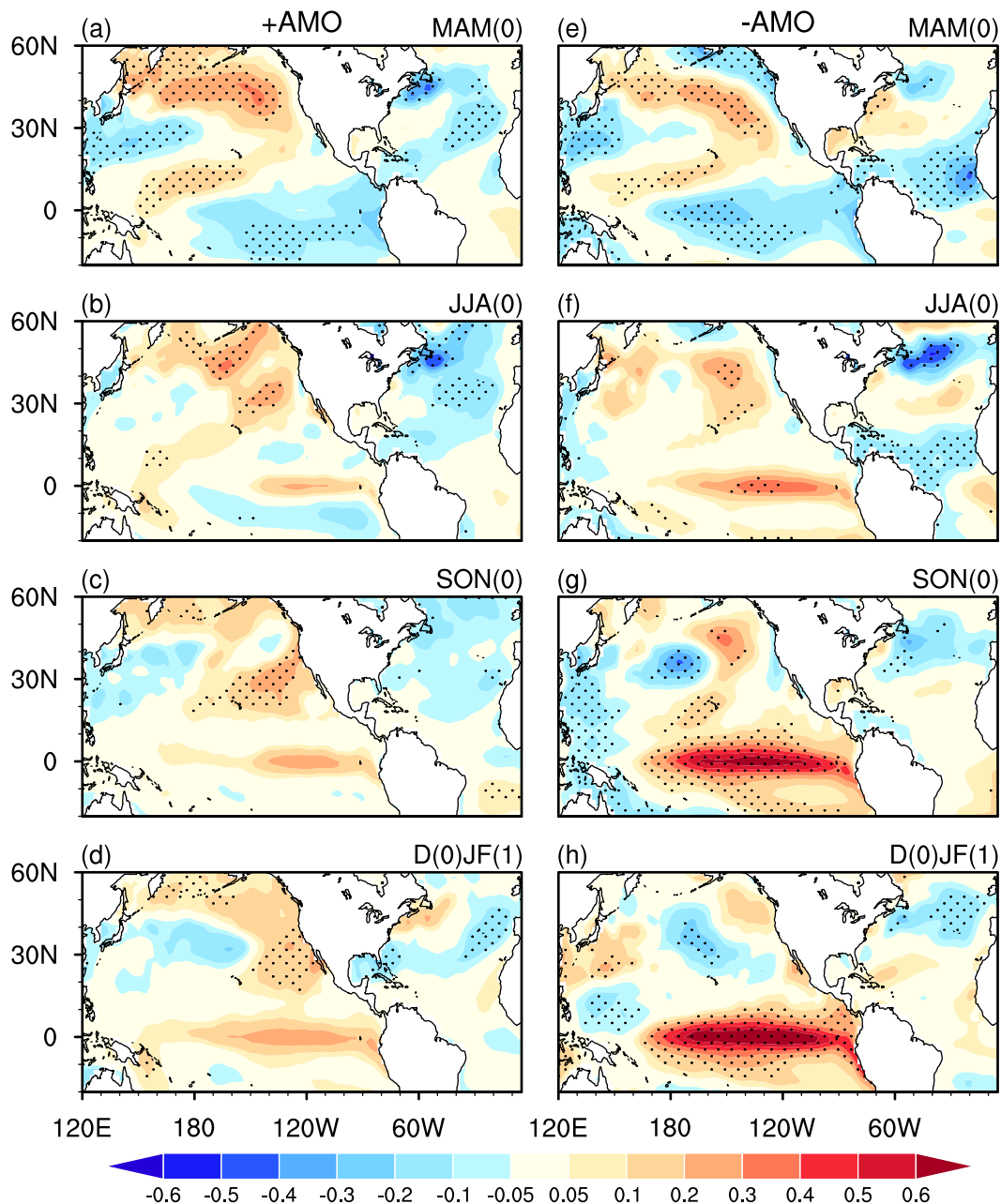


Fig. 5. SST anomalies (units: $^{\circ}\text{C}$) in (a, e) MAM(0), (b, f) JJA(0), (c, g) SON(0), and (d, h) D(0)JF(+1) obtained by regression upon the normalized preceding D(-1)JF(0) NPO index during (left) +AMO and (right) -AMO phases. Stippled regions indicate anomalies significant at the 5% level.

ical central North Pacific during different phases of the AMO may not be due to changes in the spring SST footprinting left by the winter NPO. Previous studies suggest that atmospheric convection can be more easily triggered by the same SST warming if the climatological precipitation is larger (e.g., Kim and Jin, 2011; Xiang et al., 2013; Ham and Kug, 2015). Weak climatological precipitation will suppress convection in response to SST warming because the upward motion anomalies need to overcome the climatological downward motion to result in convective activity (Kim and Jin, 2011; Xiang et al., 2013; Ham and Kug, 2015).

Figures 7a and b display the differences in the spring cli-

matological SST and precipitation between -AMO and +AMO (the former minus the latter). As expected, significant negative SST anomalies are seen in the North Atlantic (Fig. 7a). Significant SST anomalies can also be observed in the North Pacific, with SST warming in the tropical northeastern Pacific and around the tropical western Pacific extending northeastward to midlatitudes (Fig. 7a). Previous studies have indicated that the AMO can modulate the SST background state in the North Pacific via triggering anomalous Walker circulation (Zhang and Delworth, 2007; Xiang et al., 2013; Li et al., 2016; Sun et al., 2017). The processes responsible for the formation of the SST anomalies in the

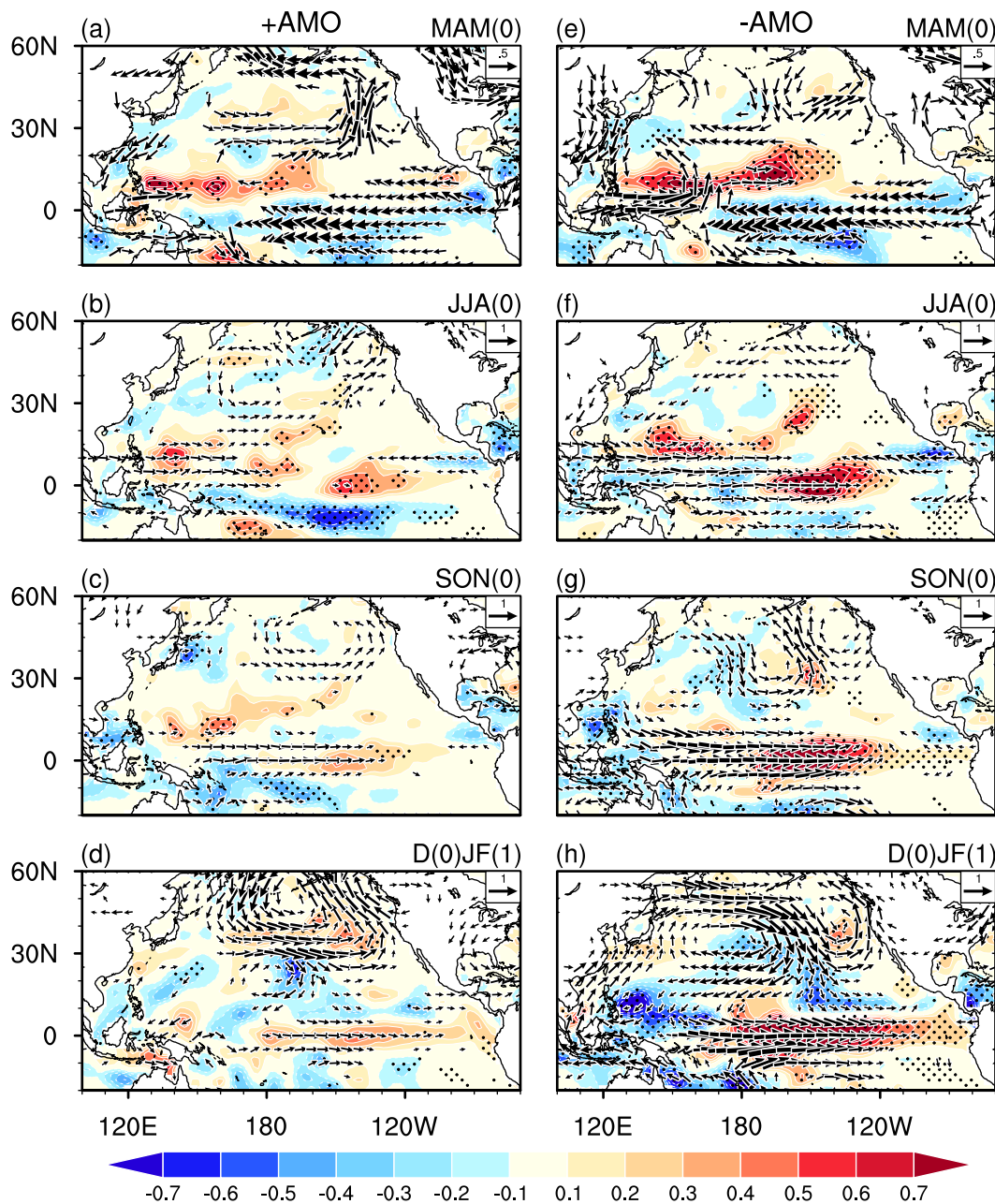


Fig. 6. Anomalies of 850-hPa winds (vectors; units: m s^{-1}) and precipitation (shading; units: mm d^{-1}) in (a, e) MAM(0), (b, f) JJA(0), (c, g) SON(0), and (d, h) D(0)JF(+1) obtained by regression upon the normalized preceding D(-1)JF(0) NPO index during (left) +AMO and (right) -AMO phases. Stippled regions indicate precipitation anomalies significant at the 5% level. Wind anomalies in both directions less than 0.2 m s^{-1} are not shown.

North Pacific can be referred to in the above studies. Significant negative precipitation anomalies are seen over the tropical western North Atlantic and midlatitudes as a response to the SST cooling there during -AMO (Figs. 7a and b). In addition, the climatological precipitation over the tropical central North Pacific around (0° - 20°N , 180° - 120°W) is significantly larger during -AMO than +AMO (Fig. 7b). Formation of this positive precipitation over the tropical central North Pacific may be due to the anomalous Walker circulation induced by the AMO, as has been discussed in previous studies (Hong et al., 2014; Chang et al., 2016; Li et al.,

2016; Sun et al., 2017). In particular, SST cooling in the TNA during -AMO could induce an anomalous Walker circulation over the tropics, with downward motion over the TNA (indicated by negative precipitation anomalies) and upward motion over the tropical central North Pacific (indicated by positive precipitation anomalies) (Li et al., 2016; Sun et al., 2017). This process explains the larger climatological precipitation over the tropical central North Pacific during -AMO. Hence, the larger climatological precipitation over the tropical central North Pacific explains the stronger spring precipitation anomalies induced by the preceding

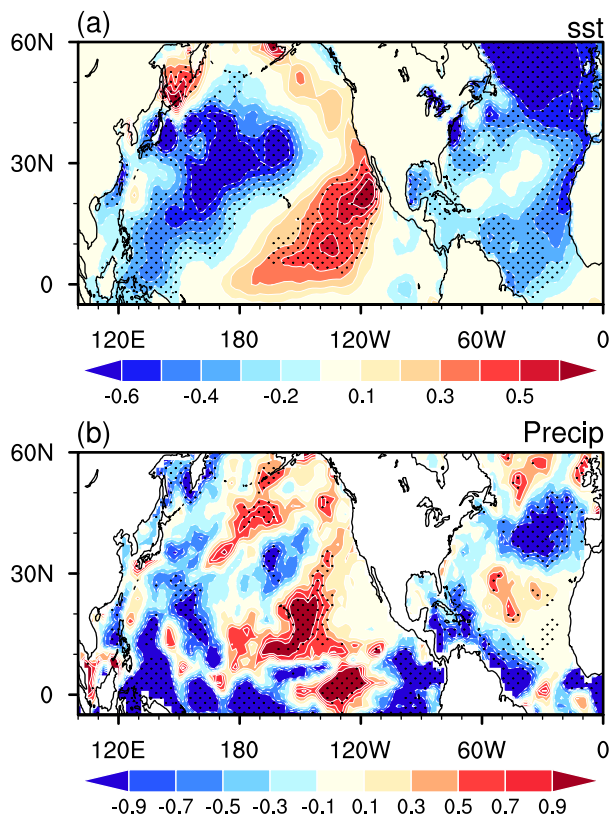


Fig. 7. Difference in the spring climatological mean (a) SST (units: °C) and (b) precipitation (mm d⁻¹) between -AMO and +AMO phases (former minus the latter). Stippled regions indicate the differences that are significantly different from zero at the 5% level.

winter NPO, as has been mentioned above, during -AMO than +AMO in response to the similar SST warming there (Figs. 5a, e and 6a, e). The above evidence suggests that one of the pathways for the modulation impact of the AMO on the winter NPO-ENSO relationship is via modulating the cli-

matological precipitation over the tropical central North Pacific.

In addition, we can deduce from Fig. 5 that significant differences exist in the spring SST anomalies in the TNA associated with the preceding winter NPO (Figs. 5a and b). Significant negative SST anomalies appear in the TNA in spring during -AMO (Figs. 5e and f). However, SST anomalies are weak in the TNA during +AMO (Figs. 5a and b). Ham et al. (2013) suggested that negative SST anomalies in the TNA during spring are an important trigger for a following winter El Niño event via inducing significant westerly wind anomalies over the EWP. Hence, stronger westerly wind anomalies over the EWP induced by the winter NPO may also partly be due to the closer association of the winter NPO with the following spring TNA SST during -AMO.

5. Summary and discussion

Previous studies have demonstrated that the wintertime NPO has a significant impact on ENSO during the subsequent winter via the SFM. This study reveals that the impact of the winter NPO on the following winter ENSO is significantly modulated by the AMO (Fig. 8). During -AMO, the winter NPO has substantial impacts on the following winter ENSO. However, the relationship between the winter NPO and the following winter ENSO is very weak during +AMO. We examined the modulation of AMO on the connection between the winter NPO and the following winter ENSO using a long time series of SLP data from the Met Office Hadley Center from 1900 to 2012. Over this period, the correlation coefficient between the winter NPO index and the following winter Niño3.4 index is only 0.12 during the +AMO phase. By contrast, during the -AMO phase, the correlation coefficient reaches 0.41, which is significant at the 99% confidence level. This increases confidence in the res-

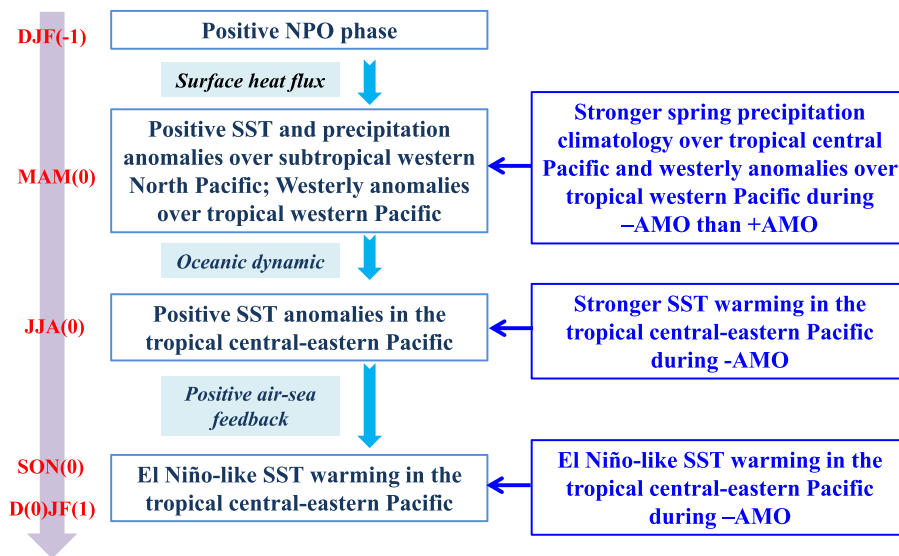


Fig. 8. Schematic diagram of the modulation effect of the AMO on the impact of the winter NPO on the following winter ENSO.

ults obtained in this study according to the more reliable period from 1948 to 2016.

It is found that the AMO impacts the winter NPO-ENSO relationship mainly via modulating the winter-NPO-associated spring precipitation anomalies over the tropical central North Pacific and associated westerly wind anomalies over the EWP (Fig. 8). In particular, winter NPO-induced spring precipitation anomalies over the tropical central North Pacific and associated westerly wind anomalies over the EWP are much stronger during -AMO than +AMO (Fig. 8). Stronger spring westerly wind anomalies further lead to a stronger impact of the winter NPO on the following winter ENSO during -AMO (Fig. 8). Further analysis indicates that the AMO possibly modulates the winter-NPO-related spring precipitation anomalies over the tropical central North Pacific via changing the climatological mean precipitation there (Fig. 8).

In addition, it is noticed that significant negative SST anomalies can be observed in the TNA in the following spring associated with the preceding winter NPO during -AMO. This significant spring SST cooling in the TNA may also partly contribute to the more significant connection between the winter NPO and the following winter ENSO during the -AMO phase. The factor responsible for the change in the association between the winter NPO and the spring TNA SST remains to be explored.

Several studies have indicated that the spatial distribu-

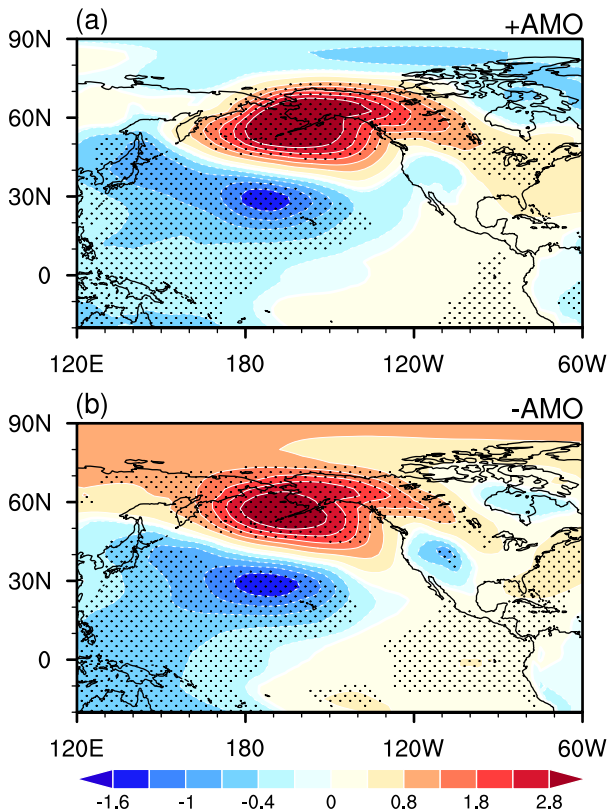


Fig. 9. Regression of SLP anomalies in D(-1)JF(0) onto the normalized simultaneous D(-1)JF(0) NPO index during the (a) +AMO and (b) -AMO phases. Stippled regions indicate anomalies significant at the 5% level.

tion of the winter NPO is crucial for the SFM (Park et al., 2013; Chen and Wu, 2018). Therefore, a question is: do significant differences exist between the spatial structures of the winter NPO over the North Pacific during different phases of the AMO? Figures 9a and b present the regression of winter SLP anomalies onto the simultaneous winter NPO index during +AMO and -AMO phases, respectively. From Fig. 9, it is apparent that the spatial patterns of the winter NPO are similar over the North Pacific region in the two phases of the AMO. This corresponds to the similar SST anomaly pattern over the North Pacific during the following

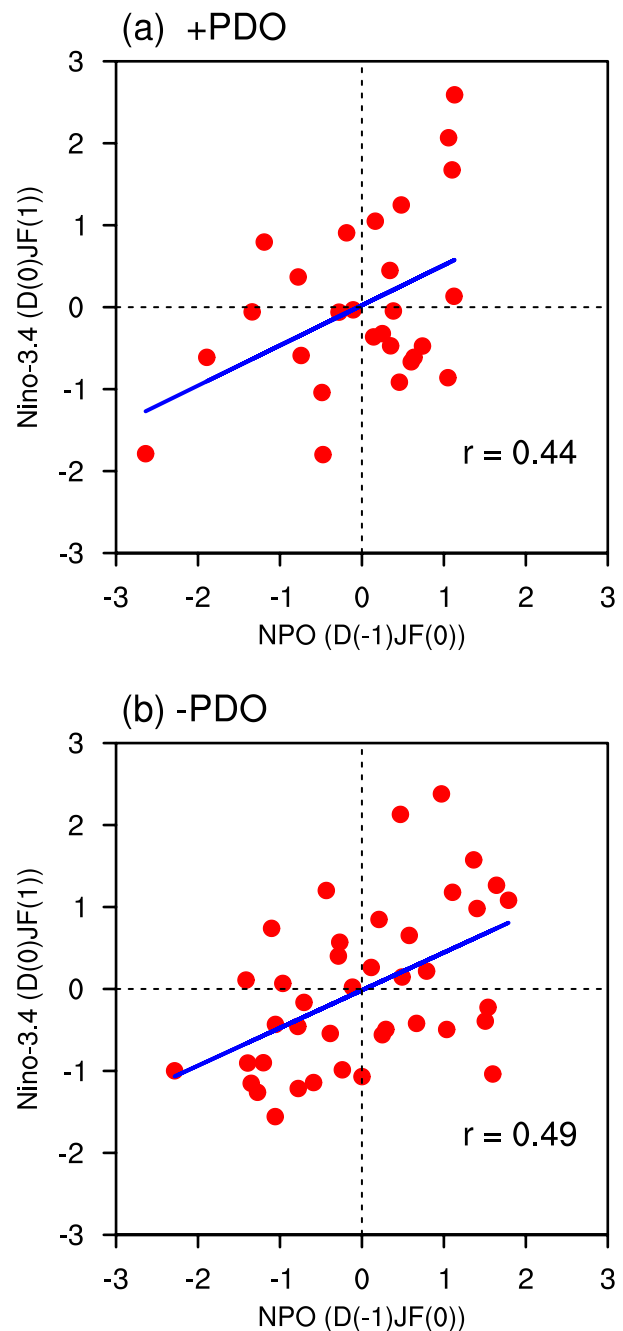


Fig. 10. Scatterplots of the winter NPO index against the following winter Niño3.4 index during (a) +PDO and (b) -PDO phases.

spring related to the winter NPO (Figs. 5a and e). This implies that the impact of the AMO on the winter NPO–ENSO relationship may not take place via modulating the spatial structure of the NPO.

Besides the AMO, it is generally recognized that the relationships between ENSO and several climate systems can also be modulated by the Pacific Decadal Oscillation (PDO) (e.g. Power et al. 1999; Duan et al., 2013). The PDO is the leading interdecadal SST variability pattern in the North Pacific (Mantua et al., 1997). But can the impact of the winter NPO on the following winter ENSO be modulated by the PDO? From Fig. 10, the winter NPO index has a close connection with the following winter Niño3.4 index during both phases of the PDO. The difference in the correlation of the winter NPO with the following winter Niño3.4 index is weak. This suggests that, in contrast to the AMO, the PDO does not have an obvious modulation effect on the impact of the winter NPO on the following winter ENSO.

Acknowledgments. We thank the two anonymous reviewers for their constructive suggestions, which helped to improve the paper. This study was jointly supported by the National Natural Science Foundation of China (Grant Nos. 41605050, 41530425, 41775080, and 41605031) and the Young Elite Scientists Sponsorship Program by China Association for Science and Technology (Grant No. 2016QNRC001).

REFERENCES

- Alexander, M. A., I. Bladé, M. Newman, J. R. Lanzante, N. C. Lau, and J. D. Scott, 2002: The atmospheric bridge: The influence of ENSO teleconnections on air-sea interaction over the global oceans. *J. Climate*, **15**(16), 2205–2231, [https://doi.org/10.1175/1520-0442\(2002\)015<2205:TAB-TIO>2.0.CO;2](https://doi.org/10.1175/1520-0442(2002)015<2205:TAB-TIO>2.0.CO;2).
- Alexander, M. A., D. J. Vimont, P. Chang, and J. D. Scott, 2010: The impact of extratropical atmospheric variability on ENSO: Testing the seasonal footprinting mechanism using coupled model experiments. *J. Climate*, **23**, 2885–2901, <https://doi.org/10.1175/2010JCLI3205.1>.
- Anderson, B. T., 2003: Tropical Pacific sea-surface temperatures and preceding sea level pressure anomalies in the subtropical North Pacific. *J. Geophys. Res.*, **108**, ACL9, <https://doi.org/10.1029/2003JD003805>.
- Anderson, B. T., and E. Maloney, 2006: Interannual tropical Pacific sea surface temperatures and their relation to preceding sea level pressures in the NCAR CCSM2. *J. Climate*, **19**, 998–1012, <https://doi.org/10.1175/JCLI3674.1>.
- Barbero, R., J. T. Abatzoglou, and T. J. Brown, 2015: Seasonal reversal of the influence of El Niño–Southern oscillation on very large wildfire occurrence in the interior northwestern United States. *Geophys. Res. Lett.*, **42**, 3538–3545, <https://doi.org/10.1002/2015GL063428>.
- Battisti, D. S., and A. G. Hirst, 1989: Interannual variability in a tropical atmosphere–ocean model: Influence of the basic state, ocean geometry and nonlinearity. *J. Atmos. Sci.*, **46**, 1687–1712, [https://doi.org/10.1175/1520-0469\(1989\)046<1687:IVIATA>2.0.CO;2](https://doi.org/10.1175/1520-0469(1989)046<1687:IVIATA>2.0.CO;2).
- Bjerknes, J., 1969: Atmospheric teleconnections from the equatorial Pacific. *Mon. Wea. Rev.*, **97**, 163–172, [https://doi.org/10.1175/1520-0493\(1969\)097<0163:ATFTEP>2.3.CO;2](https://doi.org/10.1175/1520-0493(1969)097<0163:ATFTEP>2.3.CO;2).
- Burn, D. H., and P. H. Whitfield, 2015: Changes in floods and flood regimes in Canada. *Canadian Water Resources Journal*, **41**, 139–150, <https://doi.org/10.1080/07011784.2015.1026844>.
- Chang, T., H. H. Hsu, and C. Hong, 2016: Enhanced influences of tropical Atlantic SST on WNP–NIO atmosphere–ocean coupling since the early 1980s. *J. Climate*, **29**, 6509–6525, <https://doi.org/10.1175/JCLI-D-15-0807.1>.
- Chen, S. F., and L. Y. Song, 2018: Impact of the winter north Pacific oscillation on the surface air temperature over Eurasia and North America: Sensitivity to the index definition. *Adv. Atmos. Sci.*, **35**, 702–712, <https://doi.org/10.1007/s00376-017-7111-5>.
- Chen, S. F., and R. G. Wu, 2018: Impacts of winter NPO on subsequent winter ENSO: Sensitivity to the definition of NPO index. *Climate Dyn.*, **50**, 375–389, <https://doi.org/10.1007/s00382-017-3615-z>.
- Chen, S. F., W. Chen, and K. Wei, 2013a: Recent trends in winter temperature extremes in eastern China and their relationship with the Arctic oscillation and ENSO. *Adv. Atmos. Sci.*, **30**, 1712–1724, <https://doi.org/10.1007/s00376-013-2296-8>.
- Chen, S. F., W. Chen, B. Yu, and H. F. Graf, 2013b: Modulation of the seasonal footprinting mechanism by the boreal spring Arctic oscillation. *Geophys. Res. Lett.*, **40**, 6384–6389, <https://doi.org/10.1002/2013GL058628>.
- Chen, S. F., B. Yu, and W. Chen, 2014: An analysis on the physical process of the influence of AO on ENSO. *Climate Dyn.*, **42**(3–4), 973–989, <https://doi.org/10.1007/s00382-012-1654-z>.
- Chen, S. F., B. Yu, and W. Chen, 2015: An interdecadal change in the influence of the spring Arctic oscillation on the subsequent ENSO around the early 1970s. *Climate Dyn.*, **44**, 1109–1126, <https://doi.org/10.1007/s00382-014-2152-2>.
- Chen, S. F., R. G. Wu, and W. Chen, 2018a: A strengthened impact of November Arctic oscillation on subsequent tropical Pacific sea surface temperature variation since the late-1970s. *Climate Dyn.*, **51**, 511–529, <https://doi.org/10.1007/s00382-017-3937-x>.
- Chen, S. F., B. Yu, W. Chen, and R. G. Wu, 2018b: A review of atmosphere–ocean forcings outside the tropical Pacific on the El Niño–Southern Oscillation occurrence. *Atmosphere*, **9**, 439, <https://doi.org/10.3390/atmos9110439>.
- Chiang, J. C. H., and A. H. Sobel, 2002: Tropical tropospheric temperature variations caused by ENSO and their influence on the remote tropical climate. *J. Climate*, **15**, 2616–2631, [https://doi.org/10.1175/1520-0442\(2002\)015<2616:TTTTVCB>2.0.CO;2](https://doi.org/10.1175/1520-0442(2002)015<2616:TTTTVCB>2.0.CO;2).
- Duan, W. S., L. Y. Song, Y. Li, and J. Y. Mao, 2013: Modulation of PDO on the predictability of the interannual variability of early summer rainfall over south China. *J. Geophys. Res.*, **118**, 13 008–13 021, <https://doi.org/10.1002/2013JD019862>.
- Duchon, C. E., 1979: Lanczos filtering in one and two dimensions. *J. Appl. Meteor.*, **18**, 1016–1022, [https://doi.org/10.1175/1520-0450\(1979\)018<1016:LFIOAT>2.0.CO;2](https://doi.org/10.1175/1520-0450(1979)018<1016:LFIOAT>2.0.CO;2).
- Enfield, D. B., A. M. Mestas-Núñez, and P. J. Trimble, 2001:

- The Atlantic multidecadal oscillation and its relation to rainfall and river flows in the continental U. S. *Geophys. Res. Lett.*, **28**, 2077–2080, <https://doi.org/10.1029/2000GL012745>.
- Furtado, J. C., E. Di Lorenzo, B. T. Anderson, and N. Schneider, 2012: Linkages between the North Pacific oscillation and central tropical Pacific SSTs at low frequencies. *Climate Dyn.*, **39**, 2833–2846, <https://doi.org/10.1007/s00382-011-1245-4>.
- Geng, X., W. J. Zhang, M. F. Stuecker, P. Liu, F. F. Jin, and G. R. Tan, 2017: Decadal modulation of the ENSO-East Asian winter monsoon relationship by the Atlantic multidecadal oscillation. *Climate Dyn.*, **49**, 2531–2544, <https://doi.org/10.1007/s00382-016-3465-0>.
- Gill, A. E., 1980: Some simple solutions for heat-induced tropical circulation. *Q. J. Roy. Meteor. Soc.*, **106**, 447–462, <https://doi.org/10.1002/qj.49710644905>.
- Graf, H. F., and D. Zanchettin, 2012: Central Pacific El Niño, the “subtropical bridge,” and Eurasian climate. *J. Geophys. Res.*, **117**, D01102, <https://doi.org/10.1029/2011JD016493>.
- Ham, Y. G., and J. S. Kug, 2015: Role of north tropical Atlantic SST on the ENSO simulated using CMIP3 and CMIP5 models. *Climate Dyn.*, **45**, 3103–3117, <https://doi.org/10.1007/s00382-015-2527-z>.
- Ham, Y. G., J. S. Kug, J. Y. Park, and F. F. Jin, 2013: Sea surface temperature in the north tropical Atlantic as a trigger for El Niño/Southern oscillation events. *Nature Geoscience*, **6**, 112–116, <https://doi.org/10.1038/ngeo1686>.
- Hong, C. C., T. C. Chang, and H. H. Hsu, 2014: Enhanced relationship between the tropical Atlantic SST and the summertime western North Pacific subtropical high after the early 1980s. *J. Geophys. Res.*, **119**, 3715–3372, <https://doi.org/10.1002/2013JD021394>.
- Jia, X. J., H. Lin, and J. Derome, 2009: The influence of tropical Pacific forcing on the Arctic oscillation. *Climate Dyn.*, **32**, 495–509, <https://doi.org/10.1007/s00382-008-0401-y>.
- Jin, F. F., 1997: An equatorial ocean recharge paradigm for ENSO. Part I: Conceptual model. *J. Atmos. Sci.*, **54**, 811–829, [https://doi.org/10.1175/1520-0469\(1997\)054<0811:AEOR-PF>2.0.CO;2](https://doi.org/10.1175/1520-0469(1997)054<0811:AEOR-PF>2.0.CO;2).
- Kalnay, E., and Coauthors, 1996: The NCEP/NCAR 40-year reanalysis project. *Bull. Amer. Meteor. Soc.*, **77**, 437–472, [https://doi.org/10.1175/1520-0477\(1996\)077<0437:TNYRP>2.0.CO;2](https://doi.org/10.1175/1520-0477(1996)077<0437:TNYRP>2.0.CO;2).
- Kerr, R. A., 2000: A North Atlantic climate pacemaker for the centuries. *Science*, **288**, 1984–1985, <https://doi.org/10.1126/science.288.5473.1984>.
- Kim, S. T., and F. F. Jin, 2011: An ENSO stability analysis. Part II: Results from the twentieth and twenty-first century simulations of the CMIP3 models. *Climate Dyn.*, **36**, 1609–1627, <https://doi.org/10.1007/s00382-010-0872-5>.
- Lengaigne, M., E. Guilyardi, J. P. Boulanger, C. Menkes, P. Delecluse, P. Inness, J. Cole, and J. Slingo, 2004: Triggering of El Niño by westerly wind events in a coupled general circulation model. *Climate Dyn.*, **23**, 601–620, <https://doi.org/10.1007/s00382-004-0457-2>.
- Li, F., Y. J. Orsolini, H. J. Wang, Y. Q. Gao, and S. P. He, 2018: Modulation of the Aleutian-Icelandic low seesaw and its surface impacts by the Atlantic multidecadal oscillation. *Adv. Atmos. Sci.*, **35**, 95–105, <https://doi.org/10.1007/s00376-017-7028-z>.
- Li, X. C., S. P. Xie, S. T. Gille, and C. Yoo, 2016: Atlantic-induced pan-tropical climate change over the past three decades. *Nat. Clim. Change*, **6**, 275–279, <https://doi.org/10.1038/nclimate2840>.
- Linkin, M. E., and S. Nigam, 2008: The north Pacific oscillation-west Pacific teleconnection pattern: Mature-phase structure and winter impacts. *J. Climate*, **21**, 1979–1997, <https://doi.org/10.1175/2007JCLI2048.1>.
- Mantua, N. J., S. R. Hare, Y. Zhang, J. M. Wallace, and R. C. Francis, 1997: A Pacific interdecadal climate oscillation with impacts on salmon production. *Bull. Amer. Meteor. Soc.*, **78**, 1069–1080, [https://doi.org/10.1175/1520-0477\(1997\)078<1069:APICOW>2.0.CO;2](https://doi.org/10.1175/1520-0477(1997)078<1069:APICOW>2.0.CO;2).
- McPhaden, M. J., 2004: Evolution of the 2002/03 El Niño. *Bull. Amer. Meteor. Soc.*, **85**, 677–696, <https://doi.org/10.1175/BAMS-85-5-677>.
- Nakamura, T., Y. Tachibana, M. Honda, and S. Yamane, 2006: Influence of the Northern Hemisphere annular mode on ENSO by modulating westerly wind bursts. *Geophys. Res. Lett.*, **33**, L07709, <https://doi.org/10.1029/2005GL025432>.
- Neelin, J. D., D. S. Battisti, A. C. Hirst, F. F. Jin, Y. Wakata, T. Yamagata, and S. E. Zebiak, 1998: ENSO theory. *J. Geophys. Res.*, **103**, 14 261–14 290, <https://doi.org/10.1029/97JC03424>.
- Park, J. H., and T. Li, 2019: Interdecadal modulation of El Niño-tropical North Atlantic teleconnection by the Atlantic multidecadal oscillation. *Climate Dyn.*, **52**, 5345–5360, <https://doi.org/10.1007/s00382-018-4452-4>.
- Park, J. Y., S. W. Yeh, J. S. Kug, and J. Yoon, 2013: Favorable connections between seasonal footprinting mechanism and El Niño. *Climate Dyn.*, **40**, 1169–1181, <https://doi.org/10.1007/s00382-012-1477-y>.
- Power, S., T. Casey, C. Folland, A. Colman, and V. Mehta, 1999: Inter-decadal modulation of the impact of ENSO on Australia. *Climate Dyn.*, **15**, 319–324, <https://doi.org/10.1007/s003820050284>.
- Rogers, J. C., 1981: The north Pacific oscillation. *J. Climatol.*, **1**, 39–57, <https://doi.org/10.1002/joc.3370010106>.
- Schopf, P. S., and M. J. Suarez, 1988: Vacillations in a coupled ocean-atmosphere model. *J. Atmos. Sci.*, **45**, 549–566, [https://doi.org/10.1175/1520-0469\(1988\)045<0549:VIAC-OM>2.0.CO;2](https://doi.org/10.1175/1520-0469(1988)045<0549:VIAC-OM>2.0.CO;2).
- Smith, T. M., R. W. Reynolds, T. C. Peterson, and J. Lawrimore, 2008: Improvements to NOAA’s historical merged land-ocean surface temperature analysis (1880–2006). *J. Climate*, **21**(10), 2283–2296, <https://doi.org/10.1175/2007JCLI2101.1>.
- Song, L. Y., Y. Li, and W. S. Duan, 2016: The influence of boreal winter extratropical north Pacific oscillation on Australian spring rainfall. *Climate Dyn.*, **47**, 1181–1196, <https://doi.org/10.1007/s00382-015-2895-4>.
- Sun, C., F. Kucharski, J. P. Li, F. F. Jin, I. S. Kang, and R. Q. Ding, 2017: Western tropical Pacific multidecadal variability forced by the Atlantic multidecadal oscillation. *Nature Communications*, **8**, 15998, <https://doi.org/10.1038/ncomms15998>.
- Vimont, D. J., D. S. Battisti, and A. C. Hirst, 2001: Footprinting: A seasonal connection between the tropics and mid-latitudes. *Geophys. Res. Lett.*, **28**, 3923–3926, <https://doi.org/10.1029/2001GL013435>.

- Vimont, D. J., D. S. Battisti, and A. C. Hirst, 2003: The seasonal footprinting mechanism in the CSIRO general circulation models. *J. Climate*, **16**, 2653–2667, [https://doi.org/10.1175/1520-0442\(2003\)016<2653:TSFMIT>2.0.CO;2](https://doi.org/10.1175/1520-0442(2003)016<2653:TSFMIT>2.0.CO;2).
- Wang, B., R. G. Wu, and X. H. Fu, 2000: Pacific-East Asian teleconnection: How does ENSO affect East Asian climate? *J. Climate*, **13**(9), 1517–1536, [https://doi.org/10.1175/1520-0442\(2000\)013<1517:PEATHD>2.0.CO;2](https://doi.org/10.1175/1520-0442(2000)013<1517:PEATHD>2.0.CO;2).
- Xiang, B. Q., B. Wang, and T. Li, 2013: A new paradigm for the predominance of standing central Pacific warming after the late 1990s. *Climate Dyn.*, **41**, 327–340, <https://doi.org/10.1007/s00382-012-1427-8>.
- Zhang, R., and T. L. Delworth, 2007: Impact of the Atlantic multidecadal oscillation on North Pacific climate variability. *Geophys. Res. Lett.*, **34**, L23708, <https://doi.org/10.1029/2007GL031601>.