



# A palynological perspective on the impacts of European contact: Historic deforestation, ranching and agriculture surrounding the Cuchumatanes Highlands, Guatemala

William J. Harvey<sup>1,2</sup> · Sandra Nogué<sup>3</sup> · Nathan Stansell<sup>4</sup> · Carole Adolf<sup>1</sup> · Peter R. Long<sup>1</sup> · Kathy Willis<sup>1</sup>

Received: 15 November 2019 / Accepted: 16 June 2020 / Published online: 28 July 2020  
© The Author(s) 2020

## Abstract

The Spanish conquest of the Cuchumatanes Highlands (1524–1541 CE) led to dramatic land use changes adhering to colonial practices and values, which included the rearing of livestock, agriculture, timber extraction, mining, and the relocation of indigenous populations to new settlements. These changes are often recorded in historical accounts and official records; however, these are sparse, incomplete, and have been lost over the passage of time. Here, we present a high-resolution palaeoenvironmental reconstruction for Cenote Kail (Guatemala) since the Spanish Conquest, to provide additional evidence of land use changes from an integrated multi-proxy perspective. We analysed: (i) fossil pollen; (ii) macroscopic and microscopic charcoal; and (iii) dung fungal spores (*Sporormiella*) from a lake sediment core extracted from Cenote Kail in the Cuchumatanes highlands, combining these analyses with remotely sensed satellite data. We reconstructed: (i) forest composition and dynamics; (ii) burning, (iii) fauna abundance, and (iv) agricultural activities. High resolution age-depth modelling was conducted using a combination of <sup>210</sup>Pb and <sup>14</sup>C dates. The high temporal resolution enabled a novel integrated validation of the charcoal data sets with remotely sensed satellite data and the historical record. Three stages of floral compositional change were discerned from the palynological assemblage data encompassing: (i) the decline of mixed hard wood forests (MHWF), associated with the building of new settlements, agriculture and timber extraction for fuel (1550–1675 CE); (ii) pastoral expansions involving the rearing of livestock (1700–1800 CE); and (iii) the expansions of urban settlements and increasing management of the land (1821–2015 CE). Seed predation is suggested as the dominant factor preventing MHWF from re-establishing in the Cuchumatanes Highlands over the past 500 years. Burning is limited locally and regionally and in line with the modern regime, which suggests that fire has been managed and controlled since European contact.

**Keywords** Palaeoecology · Fire · Anthropogenic impact · Mountain tropical forests · Mountain hard wood forests · Spanish conquest · Pollen · Charcoal · *Sporormiella*

---

Communicated by W. Gosling.

**Electronic supplementary material** The online version of this article (<https://doi.org/10.1007/s00334-020-00790-2>) contains supplementary material, which is available to authorized users.

---

✉ William J. Harvey  
william.harvey@arch.ox.ac.uk

<sup>1</sup> Long-Term Ecology Laboratory, Department of Zoology, University of Oxford, Zoology Research and Administration Building, 11a Mansfield Road, Oxford OX1 3SZ, UK

<sup>2</sup> Geography, Department of Social Sciences, Oxford Brookes University, Headington Campus, Oxford OX3 0BP, UK

## Introduction

After European contact and the Spanish conquest of the territory representing modern Guatemala (1524–1541 CE) the anthropogenic use of land was drastically altered to facilitate the rearing of livestock, agriculture, large scale timber

<sup>3</sup> School of Geography and Environmental Sciences, University of Southampton, Avenue Campus, Highfield Road, Southampton SO17 1BJ, UK

<sup>4</sup> Department of Geology and Environmental Geosciences, Northern Illinois University, De Kalb, IL 60115-2854, USA

extraction, mining and new settlements. These were heterogeneous across the uplands and lowlands varying in extent, duration and intensity (Thompson 1958). These practices initially attained to Spanish colonial aspirations following three important ideologies: (i) the church; (ii) the state; and (iii) the ambition of individuals to attain and generate wealth (Lovell 1985). The Cuchumatanes highlands (Fig. 1; ESM 1 Table 1) were subject to drastic land use changes under colonial rule documented in various historical accounts (e.g. Ingersoll 1826; Thompson 1958) and official records (e.g. Cortez y Larraz 1958). In the absence of chronicled accounts or direct measures of land use change, palaeoenvironmental reconstructions can be used to infer impacts and the mechanistic responses of anthropogenic practices across space and through time (e.g. Dull 2004a, b, 2007; Velez et al. 2011).

In this study we apply a multi-proxy approach to independently reconstruct the land use history of the area surrounding the Cuchumatanes highlands after European contact, with the aim of identifying how and when anthropogenic practices involving different types of land use change impacted vegetation composition during the past 500 years, and to independently validate the catchment area for burning represented by macroscopic and microscopic charcoal using satellite earth observation data.

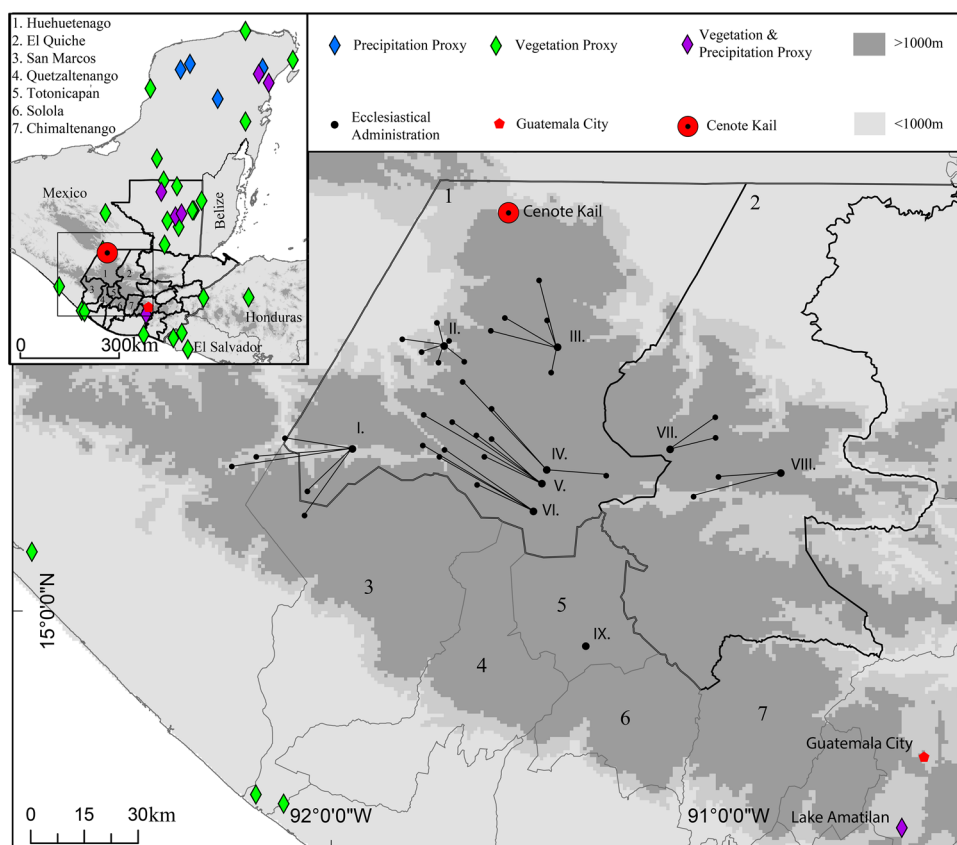
Integration of remotely sensed satellite data with palaeoecological records is often challenging and rarely attempted

due to the resolution of palaeolimnological records and their associated age-depth uncertainties (Metcalf et al. 2015). Lakes with high sedimentation rates may be precisely dated using  $^{210}\text{Pb}$  measurements to give approximately annually resolved sedimentary sequences going back up to 200 years (Oldfield and Appleby 1984). Precision dating of lake sediments allows for palaeoecological data and satellite data to be directly compared enabling contemporary validation of the palaeoecological proxy data (e.g. charcoal representing burning) for as long as the satellite instrument has been active (e.g. MODIS since 2000 CE). We present the first sub-decadal dated palaeolimnological record from this region enabling a high-resolution integrated reconstruction of land-use history since the Spanish Conquest (1524 CE).

## Climate

In the uplands of Guatemala, climate (precipitation and temperature) is highly variable and is primarily determined by the altitude rather than latitude (Ingersoll 1826). Mean annual temperatures range between 14 and 25 °C, while average rainfall across the region lies between 900 and 3,700 mm depending on the elevation (Kappelle 2006). The region is defined as being within the Central American Dry Corridor (CADC), a region of Central America defined by

**Fig. 1** Regional Map of the Maya area depicting: (i) Columbian palaeo-climatic and palynological records; (ii) the current departments for the Cuchumatanes Highlands; and (iii) colonial ecclesiastical administrative areas and churches: (I) San Andres Cuilco; (II) San Marcos; (III) San Pedro Soloma; (IV) Chiantla; (V) Huehuetenango; (VI) Santa Ana Malacatan; (VII) Santa Maria Nebaj; (VIII) San Miguel Uspantan; and (IX) Totonicapán (Lovell 1985). Ecclesiastical administrative areas are depicted and linked to the local parishes through the connected dots



its high rainfall variability between the wet and dry seasons (Bouroncle et al. 2017). There is currently only one palaeoclimatic reconstruction from the Cuchumatanes Highlands, a high resolution isotope record from Cenote Kail, which suggests that conditions became increasingly wetter during the Little Ice Age (c. 1400–1850 CE) (Stansell et al. 2020). These findings are also corroborated by a nearby palaeoclimatic reconstruction using diatoms from Lake Amatitlán (Velez et al. 2011). The only other palaeoenvironmental precipitation record to have been produced from within the CADC is a  $\delta^{18}\text{O}$  lake record from lowland Central Pacific Nicaragua, 11.906° N, 85.918° W (Stansell et al. 2013). This record presents increasingly drier conditions for the Little Ice Age juxtaposed to the currently available records from the highlands. Little else is known about the spatial and temporal dynamics of precipitation for this upland region and therefore further research is warranted to determine if precipitation patterns are homogenous with the northern lowland regions (Fig. 1) or respond variably (Metcalfé et al. 2015).

## Vegetation

Vegetation for this region of Guatemala is primarily comprised of mixed deciduous and coniferous forests. The most outstanding characteristic of this biome is the diversity of pine (> 115 *Pinus* spp.) and oak (> 150 *Quercus* spp.) species (Muller 1942; Kappelle 2006), which are well adapted to variable climatic conditions and natural fires (Corrales et al. 2015). These pine-oak forest formations often form intricate mosaics and complex successional interactions extending up into broad leaved cloud forests at higher altitudes (Kappelle 2006; Rzedowski 2006). This biome is currently threatened by agricultural expansion, logging, firewood extraction, forest fires and pests (Veblen 1978; Harvey et al. 2019). The vegetation response to landscape disturbance over the past c. 500 years is particularly important for understanding the response and resilience of the mixed hard wood forests (MHWF) and coniferous forests (CF), e.g. pine forests (PF) and mixed pine-oak forests (POF), to past and current management practices, particularly those involving natural regeneration and municipal-communal management (Ewel 1979; Miles 1987; Holder and Chase 2012). To assess the status of these forests, it is essential to distinguish the stages of succession that have led to its current state (Figuroa-Rangel et al. 2012). Analysis of the lake sediments from Cenote Kail prior to European arrival discern the transformation of the POF by pre-Columbian populations, by identifying agrarian practices and burning for lime production as the dominant drivers of vegetation change between 4000 and 1500 CE (Harvey et al. 2019).

Forest cover across the whole of Guatemala is reported to have declined at an annual rate of 1.2% between 1990

and 2005 CE (Holder and Chase 2012). There are very few remaining primary forests outside of the cloud forests in the Sierra de las Minas and several regions in the Petén district (Veblen 1976; Holder 2006; Holder and Chase 2012). Secondary forests account for more than 40% of the total forest area in the tropics (Brown and Lugo 1990; Corlett 1995; Willis et al. 2004) forming complex successional groups as they have expanded to recolonise former agricultural landscapes (Tucker 2008; Brady 2009; Redo et al. 2009; Bass 2010). In Guatemala, most of these secondary forests occur on municipal and communal lands, which the local human populations depend on for timber and fuel (Urrea 1995; Reyes 1998; Pira et al. 1999; Gibson 2001; van Kempen et al. 2009; Holder and Chase 2012). While the high expense of transporting timber out of the Cuchumatanes Highlands has previously precluded this area for commercial logging (Veblen 1974), a history of deforestation for agrarian expansion has led to many hectares of forests being felled.

Today, the vegetation surrounding the Cuchumatanes highlands is comprised of PF, POF, cloud forests, and agricultural/pastoral grasslands (Breedlove 1981; Ramírez-Marcial et al. 2001; Rzedowski 2006; Chiabai 2015; Franco-Gaviria et al. 2018). Of these three vegetation types the PF are the most widespread, dominated by *Pinus oocarpa* at the canopy level and *Acacia pennatula*, *Myrica cerifera*, and *Vernonia canescens* at the understory level (Franco-Gaviria et al. 2018). The formation of these PF is mostly associated with sustained anthropogenic disturbance relating to anthropogenic use of fire and extensive grazing (Ramírez-Marcial et al. 2001).

## The impact of European contact

The legacy left by the Maya caused widespread changes to the forests within the Maya Area through burning, e.g. for lime production (Hansen 2001, 2012; Anderson and Wahl 2016), and agrarian practices involving *Milpa* cycling (Wilken 1971, 1987; Nigh 2008; Ford and Nigh 2009), particularly during the Late Pre-Classic (350 BCE–250 CE) and Classic Periods (250–950 CE), which is when the Maya civilization expanded towards its climax (Ford and Nigh 2009). Accompanying the Spanish conquest (1524 CE), European diseases, slavery and warfare drastically reduced the native population, resulting in reduced indigenous anthropogenic pressure on the upland forests (Dull 2004a, 2007; Velez et al. 2011); however, this was counterbalanced by new pressures of colonial settlements (Jáuregui 1894; De Remesal 1932; Lovell 1985; van Oss 1986), grazing (Carranza 1897; Vázquez and Lamadrid 1944; Veblen 1976) and resource extraction (Recinos 1954; Sherman 1979; Lovell 1983) as indicated by historical records and accounts. In the

Cuchumatanes Highlands the native population was reduced from 260,000 to 73,000 between 1520 and 1550 CE (Lovell 1985).

Previous palynological reconstructions linking European contact to the environmental changes in the Maya area are limited; most available records are of low temporal resolution, greater than 200 years between samples (e.g. Deevey et al. 1979; Curtis et al. 1998; Mueller et al. 2009) or are missing sediment from the last c. 500 years (e.g. Neff et al. 2006; Caffrey et al. 2011). One palynological study has been previously conducted south of the Cuchumatanes highlands (Lago Amatitlán), which reports evidence for deforestation and increased agriculture from c. 1600 CE, and greater tree diversity after 1875 CE, including increasing abundance of *Alnus*, *Eugenia* and *Morella* (Velez et al. 2011); and two studies to the north (San Lorenzo, and Esmeralda), which report declines in *Pinus* and *Alchornea* attributed to a reduction in environmental and anthropogenic pressure on the vegetation (Franco-Gaviria et al. 2018).

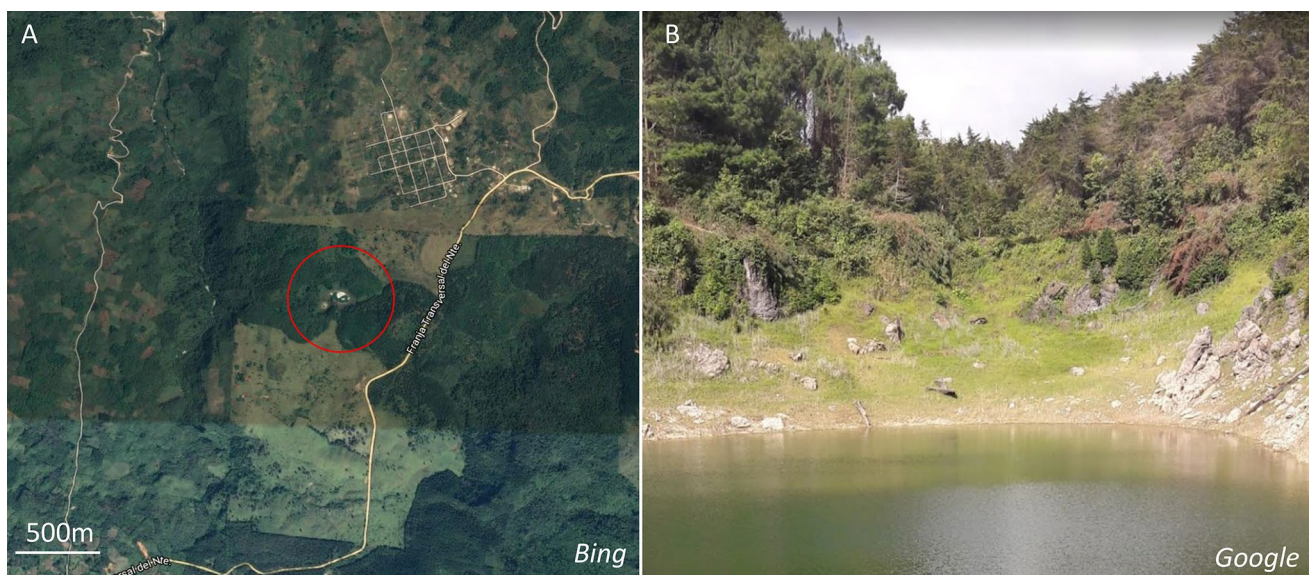
Across the wider Maya area (Yucatan Peninsula, Belize, Guatemala, El Salvador, and Northern Honduras), 29 sites have been previously investigated presenting palynological reconstructions spanning from c. 1500 CE through to the present (Fig. 1). Evidence for widespread forest recovery is supported after the initial arrival of the Spanish (c. 1500–1600 CE) across lowland Guatemala (Brenner et al. 1990; Anderson and Wahl 2016; Wahl et al. 2016), Mexico (Leyden 1987) and El Salvador (Dull 2004a, 2007). However, greater land clearance and deforestation are reported from Belize at this time (Walsh et al. 2014). This widely reflects the reductions of indigenous populations and

corresponds to reduced burning across the larger Maya area (Dull 2004a, b; 2007; Walsh et al. 2014; Anderson and Wahl 2016). After initial forest recovery, few palynological studies report upon vegetation changes during the past 500 years (e.g. Velez et al. 2011; Franco-Gaviria et al. 2018); however, Dull (2007) comments upon the reductions of *Quercus* during the nineteenth and twentieth centuries, which is supported by palynological evidence from Laguna del Espino (Dull 2004a), Laguna Cuzachapa (Dull 2007), and Lago Amatitlán (Velez et al. 2011). By integrating high resolution proxy data for vegetation, burning and herbivory with the historical record and modern remote sensing data, this study aimed to determine the long-term ecological implications of anthropogenic forcing upon the vegetation of the areas surrounding the Cuchumatanes Highlands since the Spanish Conquest (1524 CE).

## Methods

### Field and sampling techniques

Cenote Kail is situated in the uplands of Guatemala (16° 00' 00.0" N, 91° 33' 14.4" W; 1,534 m a.s.l.), surrounded by a mixed coniferous forest mosaic, ranches, agricultural fields and mines (Fig. 2). In 2015 a 105 cm composite core, with overlapping sections, was extracted from Cenote Kail using a combination of a Livingstone piston corer (Livingstone 1955) and a piston corer with polycarbonate tubing. The uppermost 20 cm of surface sediment



**Fig. 2** Aerial view of Cenote Kail depicting land cover: **a** forests, agriculture and pastures (Bing Maps 2019a, b), **b** Photograph looking over Cenote Kail exemplifying contemporary vegetation assemblage and anthropogenically modified land cover (Google Maps 2019a, b)

were sampled in the field at 0.25 cm intervals into plastic Whirlpak® bags in order to preserve the sediment-to-water interface.

Thirty subsamples along the sedimentary sequence (1 g wet weight) were extracted for biological proxy analysis of fossil pollen, *Sporormiella*, macroscopic charcoal (> 150 µm) and microscopic charcoal (> 10 µm, counted on pollen slides) based upon information inferred from the age depth model. The upper 36 cm were sampled at a resolution of 2 cm representing 2–13 years between samples. This enabled a high-resolution comparison of the palaeo-ecological data to satellite derived data covering the past c. 20 years. The lower half of the core (41–105 cm) was sampled at 5–10 cm resolutions representing 25–50 years between samples.

## Chronology

A high-resolution age depth model was constructed using ten <sup>210</sup>Pb dates and four calibrated <sup>14</sup>C dates (Table 1). Charcoal fragments were carefully selected for radiocarbon dating. Samples were pre-treated using standard acid–base–acid protocols (Abbott and Stafford 1996). Radiocarbon dates were generated at the W.M. Keck Carbon Cycle Accelerator Mass Spectrometry Laboratory at the University of California, Irvine. The IntCal13 calibration curve (Reimer et al. 2013) was used to calibrate the measured radiocarbon dates and OxCal (v.4.3) was utilised to construct an age-depth model applying a Bayesian approach (Ramsey 2009). Outliers were identified using the general outlier model implementing an outlier probability of 0.05 (Ramsey 2008). Sedimentation rate was calculated

using this age-depth model. Years CE were assigned to the sediment subsamples based upon this age depth model.

## Fossil pollen and *Sporormiella* analysis

Fossil pollen was used to reconstruct the abundance and composition of past vegetation dynamics. Fossil pollen extraction followed standard palynological procedures applying the Oxford Long-Term Ecology Laboratories protocol (OxLEL 2016). Silicone oil was used to mount pollen grains on slides to allow for rotation, easing identification. Samples were spiked with known concentrations of an exotic marker, *Lycopodium* spores (batch No. 20848 or 9666), to calculate pollen influx and accumulation rates (Stockmarr 1971). Counting and identification of pollen grains were conducted at 400× and 1,000× magnification. For each level a minimum of 300 terrestrial pollen grains were counted. Morphological identification was achieved using: (i) pollen databases (APSA Members 2007; Bush and Weng 2007; Martin and Harvey 2017); (ii) published plates (Roubik and Moreno 1991; Willard et al. 2004); and (iii) botanical reference materials from the Oxford Long-Term Ecology Laboratory reference collection (ESM 1 Table 2; ESM 2). To interpret the relative composition of the forest (deciduous/coniferous), coniferous and mixed-hard-wood forest canopy taxa were compared as a ratio.

The abundance of coprophilous fungal spores (*Sporormiella*) was used to indicate herbivorous animal presence and abundance. *Sporormiella* spores were counted and morphologically identified on the same slides (Davis and Shafer 2006; Baker et al. 2016). The abundance of spores

**Table 1** Measured, calibrated and modelled <sup>210</sup>Pb and <sup>14</sup>C ages for Cenote Kail

Lab. code	Measured age (BP)	Depth (cm)	cal age (CE) 2σ-range	Median cal age	OxCal modelled age (CE)	Median modelled age	Model agreement
Pb2101	−62 ± 3.8	0.9	2004–2019	2011.5	2007–2019	2013	74.7
Pb2102_	−61 ± 3.9	2.9	2003–2019	2011	2005–2015	2010	97.9
Pb2103	−59 ± 4	4.9	2001–2017	2009	2003–2013	2008	58.1
Pb2104	−57 ± 4.2	6.9	1998–2015	2006.5	2001–2011	2006	106.7
Pb2105	−54 ± 4.4	8.9	1995–2013	2004	1998–2009	2003.5	92.9
Pb2106	−51 ± 4.7	10.9	1991–2010	2000.5	1994–2006	2000	109.7
Pb2107	−47 ± 5	12.9	1987–2007	1997	1988–2005	1996.5	120.2
Pb2108	−43 ± 5.6	14.9	1981–2004	1992.5	1984–2001	1992.5	121.3
Pb2109	−40 ± 6	16.9	1978–2002	1990	1977–1998	1987.5	122.7
Pb21010	−22 ± 5.7	18.7	1960–1983	1971.5	1963–1988	1975.5	124.2
UCI-169169	60 ± 150	80	1516–1950	1733	1636–1830	1733	97.9
UCI-209173	165 ± 20	99.75	1665–1950	1808	1485–1738	1611.5	74.7
UCI-209174	345 ± 20	100.75	1467–1635	1551	1483–1680	1581.5	124.6
UCI-146795	385 ± 20	106.5	1445–1620	1532.5	1455–1629	1542	115.8

in sediments was calculated as accumulation rates (spore  $\text{cm}^{-2} \text{year}^{-1}$ ) using the spore concentration (spore  $\text{cm}^{-2}$ ) and the sedimentation rate ( $\text{cm year}^{-1}$ ) (Maher 1981; Bennett 1994; Bennett and Willis 2001; Baker et al. 2016).

Pollen counts were converted to percentages based on the terrestrial pollen sum. The annual influxes of *Sporormiella*, macroscopic and microscopic charcoal were calculated by using the area in  $\text{mm}^2$  and number of microscopic and macroscopic charcoal fragments, respectively, the number of *Sporormiella* spores, the exotic marker spores, sample volume, and the sedimentation rate (Maher 1981; Bennett 1994; Bennett and Willis 2001; Whitlock and Larsen 2002; Baker et al. 2016). To identify discrete zones in the resulting palynological diagrams, constrained hierarchical clustering upon the palynological assemblage was applied and statistical significance of zones was assessed using the broken stick model (Bennett 1996). Presentation of the palynological data was performed using the packages rioja (Juggins 2009) in base R (R Core Team 2012).

## Ordination analysis of the palaeoecological data

Before performing all ordinations analysis, we square-root transformed the palynological percentage data to normalise the distribution. A square root transformation was chosen because it can be applied to data sets containing zero values (Malik and Piepho 2016). To check if it was appropriate to apply a linear ordination method (e.g. Principal Component Analysis) or unimodal ordination method (e.g. Correspondence Analysis), detrended correspondence analysis (DCA) was conducted upon the palynological assemblage data (ter Braak and Prentice 1988). To calculate the species turnover we extracted the scores for the first axis of the DCA. Principal component analysis (PCA) was used to infer similarities between samples and the change in trajectories of composition of taxa through time applying a singular value decomposition of the centered but not scaled data matrix. This method of ordination was deemed appropriate to infer associations between taxa; however, limitations for the application of this method upon data sets containing zero values should be noted (ter Braak and Prentice 1988). Finally, we performed a canonical correspondence analysis (CCA) to quantify the relationship between environmental variables (macroscopic charcoal, microscopic charcoal and *Sporormiella*) and the palynological assemblage data. Ellipses representing the discrete zones were calculated using standard parameterization ( $\cos(\theta + d/2)$ ,  $\cos(\theta - d/2)$ ), where  $\cos(d)$  is the correlation of the parameters (Murdoch and Chow 1996). Statistical analysis and presentation of data was performed

using the packages vegan (Oksanen et al. 2015) and rioja (Juggins 2009) in base R (R Core Team 2012).

## Fire analysis: integrating fossil charcoal with satellite images

Past fire was quantified by counting and analysing fossil charcoal fragments. The area (in  $\text{mm}^2$ ) of microscopic charcoal ( $> 10 \mu\text{m}$  and  $< 150 \mu\text{m}$ ) fragments was quantified on the same slides applying the point counting method at  $400\times$  magnification and counts were recorded until a minimum of 50 *Lycopodium* spores and 200 fields of view were encountered for each level (Clark 1982). Macroscopic fossil charcoal fragments were counted from the  $> 150 \mu\text{m}$  fraction of each 1 g sample at  $10\times$  magnification. Charcoal volume was calculated from loss on ignition density and weight of each sample. These data were presented as charcoal influx ( $\text{mm}^2$  or particles  $\text{cm}^{-2} \text{year}^{-1}$ ) as well as concentration ( $\text{mm}^2$  or particles per  $\text{cm}^{-3}$ ). Macroscopic charcoal is typically used to infer local burning (Gavin et al. 2003; Lynch et al. 2004; Petersn and Higuera 2007; Higuera et al. 2007, 2011; Anderson and Wahl 2016), while microscopic charcoal is typically used to infer more regional burning (Clark 1988). To independently validate this assumption at Cenote Kail, we followed the approach of Adolf et al. (2018a), where micro- and macroscopic charcoal influx were compared to the amount of fire pixels detected by Moderate Resolution Imaging Spectroradiometer (MODIS) sensors in increasing radii around the study sites. We increased the radii encompassing the MODIS active fire pixels in 1 km steps from 1 to 25 km radius and in 10 km steps from 30 to 200 km radius around Cenote Kail. As opposed to the approach in Adolf et al. (2018a), we do this validation for a single site which enables us to focus on the particular effects basin properties of Cenote Kail may have on charcoal source area. MODIS data was downloaded for the years 2000–2015 CE (MCD14ML version 6.1 Global monthly fire product, Justice et al. 2002, 2006). A MODIS active fire location represents the centre of a 1 km pixel that is flagged by the algorithm as containing one or more fires within the pixel size of fire detected (Giglio et al. 2003). MODIS data were taken at 3 year averaged moving windows to account for age-depth uncertainty in the sedimentary record (Giglio et al. 2003). Filtering of MODIS fire time series data was conducted using R to remove false fires (e.g. hot factory roofs) using an urban fire filter from Globcover 2009 (Arino et al. 2009). Spatial and temporal autocorrelations in the MCD14ML product were removed following Giglio (2013), Oliveras et al. (2014) and Adolf et al. (2018a).

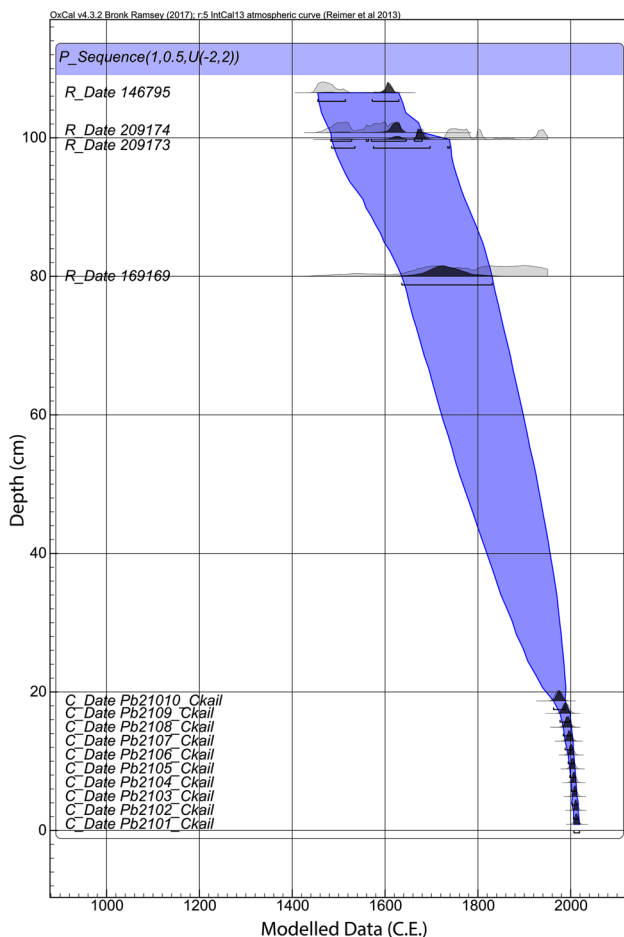
## Results

### Chronology and resolution

The age-depth model indicates that the recovered composite core (105 cm) covers the past 500 years in continuous time (Fig. 3). The general outlier model did not identify any dates to be removed from the sequence. Overall model agreement was high (Index = 143.6) and represented an average age range of 206 years for the radiocarbon dates and 15.1 years for the  $^{210}\text{Pb}$  dates surrounding the median modelled age.

### Palaeoecological trends

Three statistically significant zones were identified from the broken stick model. Zone 1 (1550–1725 CE) represents an average temporal resolution of 50 years between samples spanning 225 years (with a range of 49–50 years), Zone 2 (1725–1940 CE) has an average resolution of 17 years



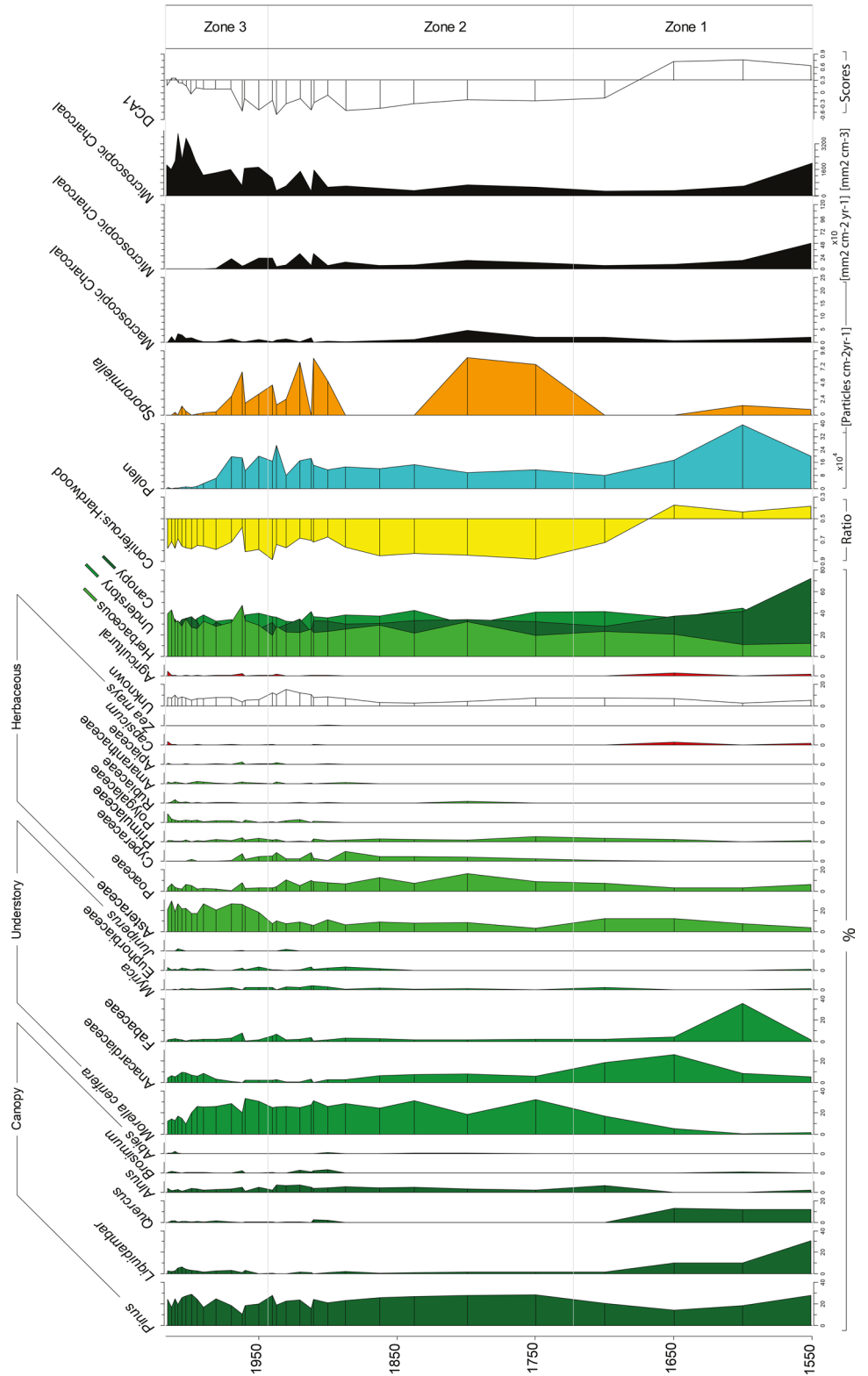
**Fig. 3** Age depth model of Cenote Kail post European contact

spanning 215 years (with a range of 3–50 years) and the temporal resolution of Zone 3 (1940–2015 CE) represents an average of 5 years spanning 75 years (with a range of 2–11 years). Seventy-six taxa were recognised in the palynological sequence, which were grouped based upon their lowest identifiable common taxonomic denomination. *Pinus*, *Liquidambar*, *Quercus*, *Morella cerifera*, Anacardiaceae and Fabaceae dominate the tree component while Asteraceae, Poaceae and Cyperaceae are the most abundant herbaceous taxa (Fig. 4).

The PCA displays several gradients and associations between samples and taxa (Fig. 5). The first axis represents 16.3% of the variation, while axis 2 represents 14.1% of the variation. To help visualise the most distinctive gradient we superimposed the independently calculated palynological zones upon the quadrants of the PCA. Zone 1 is most associated with the bottom left quadrant along with canopy taxa *Quercus*, *Liquidambar* and *Bursera simaruba* and understory taxa Anacardiaceae, Fabaceae and *Roupala*. Zone 2 spans the right top and right bottom quadrants represented by the canopy taxon *Alnus*; understory taxa *Myrica* and *Pourouma*; and herbaceous taxa Poaceae, Brassicaceae, Cyperaceae, Apiaceae and Primulaceae. Zone 3 is best represented by the top left quadrant associated with the canopy taxon *Abies*; understory taxa *Terminalia*, Rubiaceae, *Aphelandra* and *Juniperus*; and the herbaceous taxon Asteraceae. Results from the CCA show that microscopic charcoal and *Sporormiella* are significant environmental variables most associated with Zone 2 (Fig. 5). Macroscopic charcoal is most associated with Zone 3 but is not a statistically significant.

Zone 1 (105–74 cm, 4 samples, 1550–1725 CE) spans 175 years and is defined by canopy taxa *Liquidambar* (1.3–30.7%) and *Quercus* (0–13%). Total tree cover is very high (69.3–86.3%) with a dominance of canopy taxa from 1550 CE (82.7%); however, this dramatically decreases towards 1700 CE (28%) with understory (44.7%) and herbaceous (23.3%) taxa becoming more abundant from 1600 CE (Fig. 4). The reduction of *Liquidambar* (30.7–10.3%) from 1550 to 1600 CE followed by *Quercus* (12–0%) and a further reduction in *Liquidambar* (10.3–1.3%) from 1600 to 1700 CE marks the end of MHWF dominance in this sequence (Fig. 4). Fabaceae (35.7%) becomes prevalent around 1600 CE after which Anacardiaceae steadily increases through to 1700 CE (8.3–18.7%). From 1650 CE *Morella cerifera* rises to fill the tree component (5–17%) along with *Pinus* (14–20.3%). *Alnus* establishes in low abundance from 1700 CE (6.3%). Asteraceae (7.6–12.3%) and Poaceae (3.3–7.3%) increase from c. 1600 to 1700 CE. *Capsicum* is present in low abundances at 1550 CE (1.3%) and 1600 CE (2.7%). *Sporormiella* influx is in low and stable abundance (0.8–1.5 spores  $\text{cm}^{-2} \text{year}^{-1}$ ) until 1650 CE when it disappears. Macroscopic charcoal influx remains low (0.6–2.1 particles  $\text{cm}^{-2} \text{year}^{-1}$ )

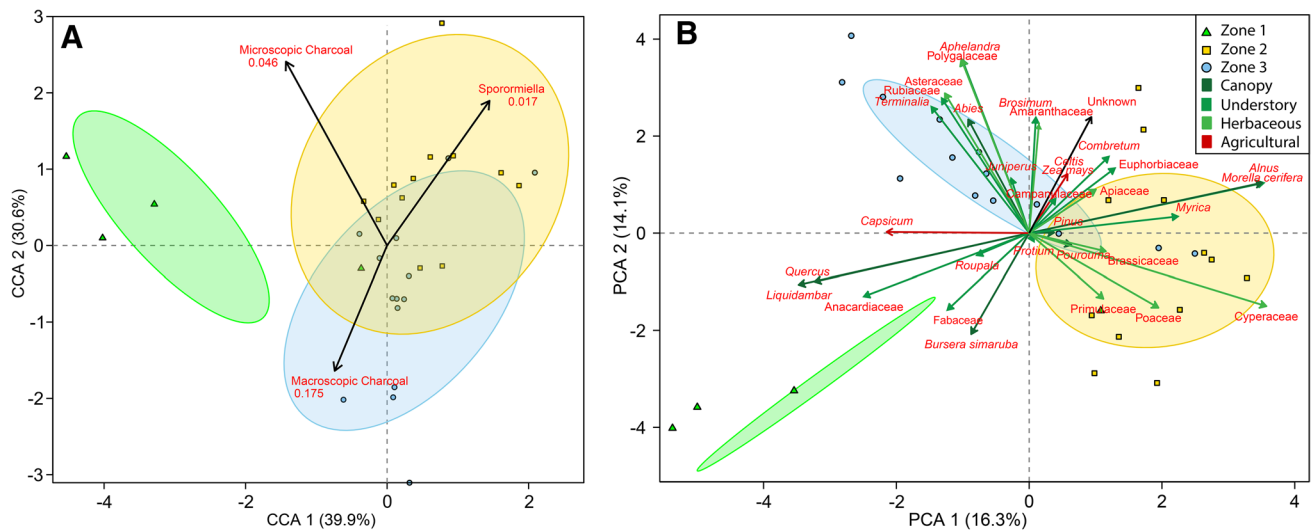
**Fig. 4** Palynological percentage diagram of taxa appearing in an abundance greater than 2% showing: Forest structure; Coniferous to hardwood ratio; Pollen influx; *Sporormiella* influx; macroscopic and microscopic charcoal influx; DCA axis 1



and microscopic charcoal influx decreases from 1550–1700 CE (481.8–59.8 mm<sup>2</sup> cm<sup>-2</sup> year<sup>-1</sup>). Microscopic charcoal particularly decreases between 1550 and 1600 CE (481.8–154 mm<sup>2</sup> cm<sup>-2</sup> year<sup>-1</sup>). Pollen influx is highest between 1550

and 1650 CE, (201,170–173,958 grains cm<sup>-2</sup> year<sup>-1</sup>) decreasing towards 1700 CE (80,513 grains cm<sup>-2</sup> year<sup>-1</sup>). Zone 2 (65–26 cm, 12 samples, 1725–1942 CE) covers 193 years and is characterised by the increasing abundances





**Fig. 5** Canonical correspondence analysis (a). Principal component analysis (b). Zones derived from the broken stick model represented by ellipses at a confidence of 95%. Zone 1 = green triangles; Zone 2 = yellow squares; Zone 3 = blue circles

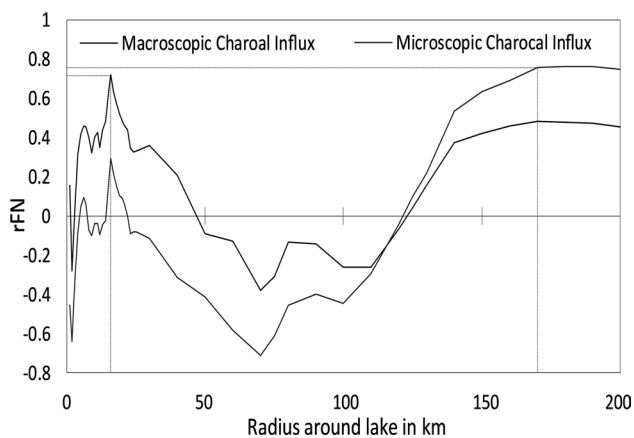
of understory taxa *Morella cerifera* (18.6–32%) and Anacardiaceae (0.6–8%) as well as the sustained abundance of herbaceous taxa Asteraceae (3.3–11.3%), Poaceae (3.3–16.3%) and Cyperaceae (0.7–7.7%). Total tree cover continues to slowly decline between 1750 and 1938 CE (73.3–68.7%). Increases in Euphorbiaceae (0–3.3%) and *Myrica* from 1860 to 1938 CE (0–3.7%) are joined by increases in Cyperaceae between 1860 and 1910 CE (0.7–7.7%). *Zea mays* punctuates the sequence at 1900 CE (0.3%), while *Capsicum* appears at 1910 CE (0.7%) and 1938 CE (0.3%). *Sporormiella* influx is very high between 1750 and 1800 CE (7.5–8.6 spores  $\text{cm}^{-2} \text{year}^{-1}$ ), absent between 1800 and 1900 CE (0%), and then high again between 1900 and 1938 CE (0–8.5 spores  $\text{cm}^{-2} \text{year}^{-1}$ ). Macroscopic charcoal (1.9–4.6 particles  $\text{cm}^{-2} \text{year}^{-1}$ ) and microscopic charcoal (115.2–160.5  $\text{mm}^2 \text{cm}^{-2} \text{year}^{-1}$ ) increase from 1700 to 1800 CE and both decrease between 1800 and 1900 CE (macroscopic 4.6–1 particles  $\text{cm}^{-2} \text{year}^{-1}$ ; microscopic 160.5–75.6  $\text{mm}^2 \text{cm}^{-2} \text{year}^{-1}$ ). Pollen influx remains stable (c. 174,604 grains  $\text{cm}^{-2} \text{year}^{-1}$ ).

Zone 3 (24–0 cm, 14 samples, 1942–2014 CE) encompasses 67 years and is defined by the increased abundance of the herbaceous taxon Asteraceae (17–26.3%). Total tree cover reduces from 1948 to 2014 CE (65.3–53%). Canopy (28.9%), understory (31%) and herbaceous (33.2%) taxa are, on average, in equal abundance. *Morella cerifera* decreases in abundance after 1997 CE (20–12.3%), while *Liquidambar* (0.6.3%) and Anacardiaceae (2–9.3%) increase from 1948–2003 CE. Macroscopic charcoal remains in low abundance; however, it increases from 1988 to 2006 CE (0.2–3.2

particles  $\text{cm}^{-2} \text{year}^{-1}$ ) and also peaks in 2010 CE (2.1 particles  $\text{cm}^{-2} \text{year}^{-1}$ ). Microscopic charcoal decreases from 1948 to 1988 CE (201.5–2.4  $\text{mm}^2 \text{cm}^{-2} \text{year}^{-1}$ ) and is almost absent from 1988 to 2014 CE (2.4–0.01  $\text{mm}^2 \text{cm}^{-2} \text{year}^{-1}$ ). *Sporormiella* remains in high abundance from 1948 to 1968 CE (1.8–6.5 spores  $\text{cm}^{-2} \text{year}^{-1}$ ) after which influx decreases and is absent after 2008 CE. Pollen influx also decreases after 1968–2014 CE (196,916–5,855 grains  $\text{cm}^{-2} \text{year}^{-1}$ ).

## Charcoal area validation

Linking the charcoal influx values to MODIS-inferred modern day burning regimes, an approach used by Adolf et al. (2018b), showed that the source area for macroscopic and microscopic charcoal is estimated to be 16 km for macroscopic charcoal and 180 km for microscopic charcoal, assuming that distance is indicated by the strongest correlations between charcoal and satellite data (Fig. 6). The strongest correlations between charcoal influx and the MODIS product are slightly stronger for microscopic charcoal ( $r$ : 0.76) compared to macroscopic charcoal ( $r$ : 0.72). Microscopic and macroscopic charcoal are not significantly correlated ( $p$ -value: 0.3) between charcoal data sets supporting the two different source areas.



**Fig. 6** Calibration of macroscopic charcoal influx in particles  $\text{cm}^{-2} \text{year}^{-1}$ , microscopic charcoal influx in  $\text{mm}^2 \text{cm}^{-2} \text{year}^{-1}$ . rFN stands for the correlations coefficient  $r$  between MODIS-inferred fire number and macroscopic and microscopic charcoal influx, respectively. The spatial intervals chosen for comparison are 1–25 km radius in 1 km steps around Cenote Kail and from 30 to 200 km radius, in 10 km steps including the radii 75 and 125 km

## Discussion

### How and when did anthropogenic practices involving different types of land use change impact floral assemblage changes around the Cuchumatanes Highlands?

Three stages of compositional change can be discerned from the palynological assemblage since European contact in 1524 CE. These changes represent responses to anthropogenic activities in the Cuchumatanes highlands corresponding to pastoral activities, agriculture, timber extraction, mining, and new settlements. These three phases encompass: (i) the decline of MHWF, associated with the building of new settlements, agriculture and timber extraction for fuel (1550–1675 CE); (ii) pastoral expansions involving the rearing of livestock (1700–1800 CE); and (iii) the expansions of urban settlements and the increasing anthropogenic management of the surrounding land (1821–2015 CE).

### Colonial settlement construction

Evidence from Cenote Kail indicates that land clearance for the establishment of new settlements around the Cuchumatanes Highlands began from at least 1550 CE and by 1650–1675 CE most hard-wood taxa (*Liquidambar* and *Quercus*) had been removed from the landscape (Figs. 4 and 5). The palynological evidence suggests that hard-wood taxa were removed due to land clearing for new settlements under a regime called ‘congregación’ or ‘reducción’ from 1537 CE

(van Oss 1986), which involved forced removal of indigenous peoples from their villages into colonial settlements (Fig. 1). Historical records report that these settlements were mandated to have a church and administrative buildings, for which substantial amounts of timber were required (Jáuregui 1894; De Remesal 1932). Administrative towns, such as Purificación Jacaltenango (meaning “wall of cabins” in Nahuatl) located 40 km from the study site would have required even larger quantities of timber for both construction and for fuel (Lovell 1985).

By the late 16th/early 17th century, historical (Thompson 1958) and palynological accounts (Velez et al. 2011) report rapid deforestation across Guatemala to meet the needs of these towns. Timber was extracted for buildings, reportedly a combination of pine (Thompson 1958) and oak (Dull 2004a; Velez et al. 2011); however, it would appear from the historical records that timber extraction was non-discriminatory (Thompson 1958). For example, the forests surrounding Lake Amatitlán (Fig. 1) were rapidly being felled to meet the needs of Antigua for which evidence is reported from historical chronicles (Thompson 1958) and from a palynological record from Lake Amatitlán (Velez et al. 2011).

### Pastoral activities: Ranching

It is likely that as well as being preferentially extracted for wood, the increasing pressures of pastoral activities damaged the reproductive success of taxa such as *Quercus* through the consumption of acorns by cattle and sheep (van Wieren 1996; Kappelle 2006). Bovids, ovine and porcine (cattle, sheep and pigs) can digest fibrous content and plant lignin (van Wieren 1996), meaning that predation of seeds such as acorns would have dramatically increased with pastoral expansions. This would prevent further reproduction and recovery of the MHWF in this area (Kappelle 2006; Wallace et al. 2015). During the Pre-Columbian era *Sporormiella* influx into Cenote Kail was found to be higher than for most of the Colonial and Post-Colonial Periods (Harvey et al. 2019; Stansell et al. 2020). This is thought to be due to the higher abundance of native herbivores, such as white tailed deer (*Odocoileus virginianus*), the Baird tapir (*Tapirus bairdii*) and peccary (*Tayassuidae*), which were reduced through habitat loss and hunting after European contact.

During the early 17th century Spanish settlers began to expand into the countryside (MacLeod 1973), and by the end of the century the anthropogenic impact caused to the forests and soils was evident though the practices of excessive forest clearing and overgrazing (Veblen 1976). In 1699 CE and 1701 CE, the villages surrounding Antigua were forbidden from grazing or cultivating the surrounding hillsides by royal decree to attempt to preserve the depleted soils (MacLeod 1973). These edicts are suggested to be the first conservation

laws to be implemented anywhere in Latin America (Veblen 1976). Substantial degradation to the underlying soil is first reported in the 19th century for the north-eastern half of the Department of Totonicapan (Carranza 1897), which was the leading sheep-rearing district of Guatemala over the previous two centuries (Vázquez and Lamadrid 1944).

*Sporormiella* evidence from Cenote Kail suggests that pastoral activities expanded from 1700 to 1800 CE around the Cuchumatanes Highlands, and while no clear change in the overall vegetation composition can be discerned, sustained absence of *Liquidambar* and *Quercus* is evident (Fig. 4). This could indicate the translocation of cattle and sheep from a neighbouring province such as the Department of Totonicapan over to the Department of Huehuetenango (Fig. 1). Between 1800 and 1870 CE the influx of *Sporormiella* diminished, which could indicate a similar edict of land conservation as that recorded for the north-eastern half of the Department of Totonicapan (Carranza 1897). One other such explanation could revolve around civil unrest pertaining to the Act of Independence of Central America in 1821 CE, which led to land use change and abandonment due to war.

## Land-use management

Burning, locally and regionally, is limited and in line with the modern regime, which suggests that fire has been managed and controlled at least since European contact (Fig. 4). During the Pre-Columbian era (before 1524 CE) fire was identified as a significant driver of forest turnover in this region (Harvey et al. 2019); however, land-use change to incorporate extensive ranching may have reduced natural burning regimes and/or previous anthropogenic uses of fire, such as burning for *Milpa* or lime production.

The conservation of the MHWF taxa around the Cuchumatanes Highlands may therefore be achieved by continuing to limit the presence of fire in these forests, and by controlling or removing domestic bovids, ovine and porcine. This would allow for MHWF taxa such as *Quercus* and *Liquidambar* to re-establish over the course of 80–200 years (Kappelle 2006).

There is no evidence of deforestation from mining activities within the palaeolimnological record from Cenote Kail. The possibility that the Cuchumatanes Highlands might contain significant mineral wealth led to open-cast mines opening in Pichiquil, San Francisco Motozintla and Chiantla shortly after the Spanish conquest (Recinos 1954; Sherman 1979; Lovell 1983). The gold mines of Pichiquil and San Francisco Motozintla did not prove successful (Recinos 1954); however, success at Chiantla led to silver and lead extraction from 1537 CE (Sherman 1979). The mines of Chiantla produced modest quantities of silver and lead throughout the colonial period (Lovell 1983).

## What is Cenote Kail's charcoal source area?

The size of the source area for macroscopic charcoal and microscopic charcoal into a depositional environment is contentious. Macroscopic charcoal is widely suggested to reflect burning from a local to sub-regional source area between 0 and 10 km radius (Gavin et al. 2003; Lynch et al. 2004; Petersn and Higuera 2007; Higuera et al. 2007, 2011; Anderson and Wahl 2016), while microscopic charcoal is suggested to primarily reflect regional burning within a radius of up to several hundred kilometres (Clark 1988); however, recent validation of charcoal dispersal across Europe linked both macroscopic and microscopic charcoal influx to a regional source area of around 40 km radius (Adolf et al. 2018b). Our results from Cenote Kail indicate that the catchment area for macroscopic charcoal and microscopic charcoal varied by a degree of magnitude. Validation through the comparative integration of the charcoal records with MODIS-derived fire time series suggests two distinct biomass burning histories, the first reflecting extra-local to sub-regional burning at a radius of 16 km, and secondly a clearly regional burning signal from up to 180 km. The direct distance of Cenote Kail to the Pacific coast is around 160 km suggesting that the regional charcoal signal is indicative of burning inclusive of this wider region, encompassing anthropogenic settlements built in the Cuchumatanes Highlands as well as lowland activities. The macroscopic charcoal signal is likely to reflect a more local signal, encompassing the modern pastoral, agricultural and mining towns of Aguacate, Yalambojoch and Yulaurel. The subtle differences between the correlation scores of macroscopic and microscopic charcoal are likely not enough to truly discriminate between local vs regional fire; however, they do provide a best-case scenario estimate.

## Conclusions

The establishment of colonial settlements is evident from the palynological record from Cenote Kail as well as nearby Lake Amatitlán, indicating that around 150 years of intensive logging led to the permanent decline of the MTHFs. The recovery of these forests shows evidence of suppression since through the expansion of pastoral practices. Seed predation is suggested to be the dominant factor preventing MHWFs from re-establishing in the Cuchumatanes Highlands during the past 500 years. Evidence for edicts of conservation can be inferred from the *Sporormiella* record for different parts of the Cuchumatanes Highlands during the eighteenth and nineteenth centuries. No direct evidence for the impacts of mining have been inferred from our data sets.

The high sedimentation rate and precise  $^{210}\text{Pb}$  dating of Cenote Kail has enabled a rare validation of the palaeolimnological catchment area through cross comparisons of satellite data with the charcoal proxy data. This approach has enabled a calibration of the charcoal data sets to allow for a quantitative analysis of burning, comparable to modern day observations. Radial burning was identified at 16 km for macroscopic charcoal and 180 km for microscopic charcoal. To properly interpret the signals represented in the palaeolimnological record it is recommended that all future palaeolimnological work should attempt to fully understand the catchment area for each proxy represented using this sort of quantitative approach. The integrated approach of palaeoenvironmental techniques with historical records and remotely sensed satellite data has enabled a unique and high-resolution reconstruction of the flora, fire, and animal abundance of the areas surrounding the Cuchumatanes Highlands over the past 500 years, detailing anthropogenic impacts since European contact.

**Acknowledgements** This research was funded by the Natural Environment Research Council of the United Kingdom NE/L002612/1, US National Science Foundation EAR-1502989 and St Edmund Hall, University of Oxford.

**Open Access** This article is licensed under a Creative Commons Attribution 4.0 International License, which permits use, sharing, adaptation, distribution and reproduction in any medium or format, as long as you give appropriate credit to the original author(s) and the source, provide a link to the Creative Commons licence, and indicate if changes were made. The images or other third party material in this article are included in the article's Creative Commons licence, unless indicated otherwise in a credit line to the material. If material is not included in the article's Creative Commons licence and your intended use is not permitted by statutory regulation or exceeds the permitted use, you will need to obtain permission directly from the copyright holder. To view a copy of this licence, visit <http://creativecommons.org/licenses/by/4.0/>.

## References

- Abbott MB, Stafford TW Jr (1996) Radiocarbon geochemistry of modern and ancient Arctic lake systems, Baffin Island, Canada. *Quat Res* 45:300–311
- Adolf C, Doyon F, Klimmek F, Tinner W (2018b) Validating a continental European charcoal calibration dataset. *Holocene* 28:1,642–1,652
- Adolf C, Wunderle S, Colombaroli D et al (2018) The sedimentary and remote-sensing reflection of biomass burning in Europe. *Glob Ecol Biogeogr* 27:199–212
- Anderson L, Wahl D (2016) Two Holocene paleofire records from Peten, Guatemala: Implications for natural fire regime and pre-hispanic Maya land use. *Glob Planet Chang* 138:82–92
- Arino O, Ramos Perez JJ, Kalogirou V, Bontemps S, Defourny P, van Bogaert E (2012) Global land cover map for 2009 (GlobCover 2009). European Space Agency (ESA) and Université catholique de Louvain, PANGAEA. <http://doi.org/10.1594/PANGAEA.787668>
- APSA Members (2007) The Australasian Pollen and Spore Atlas V1.0. Australian National University, Canberra. <https://apsa.anu.edu.au/> (accessed 13 June 2018)
- Baker AG, Cornelissen P, Bhagwat SA, Vera FWM, Willis KJ (2016) Quantification of population sizes of large herbivores and their long-term functional role in ecosystems using dung fungal spores. *Methods Ecol Evol* 7:1,273–1,281
- Bass JO (2010) Learning landscape change in Honduras: Repeat photography and discovery. In: Webb RH, Boyer DE, Turner RM (eds) Repeat photography: methods and applications in the natural sciences. Island Press, Washington, DC, pp 275–288
- Bennett KD (1994) Confidence intervals for age estimates and deposition times in late Quaternary sediment sequences. *Holocene* 4:337–348
- Bennett KD (1996) Determination of the number of zones in a biostratigraphical sequence. *New Phytol* 132:155–170
- Bennett KD, Willis KJ (2001) Pollen. In: Smol JP, Birks HJB, Last WM (eds) Tracking environmental change using lake sediments, vol 3. Kluwer Academic Publishers, Dordrecht, pp 5–32
- Bing Maps (2019) Bing Maps [online]. <https://www.bing.com/maps> (accessed 12 Mar 2019)
- Bouroncle C, Imbach P, Rodríguez-Sánchez B, Medellín C, Martínez-Valle A, Läderach P (2017) Mapping climate change adaptive capacity and vulnerability of smallholder agricultural livelihoods in Central America: ranking and descriptive approaches to support adaptation strategies. *Clim Chang* 141:123–137
- Brady S (2009) Revisiting a Honduran landscape described by Robert West: an experiment in repeat geography. *J Lat Am Geogr* 8:7–27
- Breedlove DE (1981) Flora of Chiapas, Part 1: introduction to the Flora of Chiapas. The California Academy of Sciences, San Francisco
- Brenner M, Leyden B, Binford MW (1990) Recent sedimentary histories of shallow lakes in the Guatemalan savannas. *J Paleolimnol* 4:239–252
- Brown S, Lugo AE (1990) Tropical secondary forests. *J Trop Ecol* 6:1–32
- Bush MB, Weng C (2007) Introducing a new (freeware) tool for palynology. *J Biogeogr* 34:377–380
- Caffrey MA, Taylor MJ, Sullivan DG (2011) A 12,000-year record of vegetation and climate change from the Sierra de Los Cuchumatanes, Guatemala. *J Lat Am Geogr* 10:129–151
- Carranza JE (1897) Un pueblo de los altos: apuntamientos para su historia. Tonicapán. Establecimiento Tipográfico Popular, Quetzaltenango
- Chiabai A (ed) (2015) Climate change impacts on tropical forests in Central America: an ecosystem service perspective. Routledge, London
- Clark RL (1982) Point count estimation of charcoal in pollen preparations and thin sections of sediments. *Pollen Spores* 24:523–535
- Clark JS (1988) Particle motion and the theory of charcoal analysis: Source area, transport, deposition, and sampling. *Quat Res* 30:67–80
- Corlett RT (1995) Tropical secondary forests. *Prog Phys Geogr* 19:159–172
- Corrales L, Bouroncle C, Zamora JC (2015) An overview of forest biomes and ecoregions of Central America. In: Chiabai A (ed) Climate change impacts on tropical forests in Central America: an ecosystem service perspective. Routledge, London, pp 33–54
- Cortez y Larraz P (1958) Descripción geográfico-moral de la diócesis de Guatemala. Sociedad de Geografía e Historia de Guatemala, Guatemala
- Curtis JH, Brenner M, Hodell DA, Balsler RA, Islebe GA, Hooghiemstra H (1998) A multi-proxy study of Holocene environmental change in the Maya Lowlands of Peten, Guatemala. *J Paleolimnol* 19:139–159

- Davis OK, Shafer DS (2006) *Sporormiella* fungal spores, a palynological means of detecting herbivore density. *Palaeogeogr Palaeoclimatol Palaeoecol* 237:40–50
- Deevey ES, Rice DS, Rice PM, Vaughan HH, Brenner M, Flannery MS (1979) Mayan urbanism: impact on a tropical karst environment. *Science* 206:298–306
- De Remesal A (1932) Historia general de las Indias Occidentales, y particular de la gobernación de Chiapa y Guatemala, vol 4. Tipografía Nacional, Guatemala
- Dull RA (2004a) An 8000-year record of vegetation, climate, and human disturbance from the Sierra de Apaneca, El Salvador. *Quat Res* 61:159–167
- Dull RA (2004b) A Holocene record of Neotropical savanna dynamics from El Salvador. *J Paleolimnol* 32:219–231
- Dull RA (2007) Evidence for forest clearance, agriculture, and human-induced erosion in Precolumbian El Salvador. *Ann Assoc Am Geogr* 97:127–141
- Ewel JJ (1979) Secondary forests: the tropical wood resource of the future. In: Chavarria M (ed) Simposio Internacional sobre las Ciencias Forestales y su Contribucion al Desarrollo de la America Tropical. Concit-Interciencia, San José, Costa Rica
- Figueroa-Rangel BL, Willis KJ, Olvera-Vargas M (2012) Late-Holocene successional dynamics in a transitional forest of west-central Mexico. *Holocene* 22:143–153
- Ford A, Nigh R (2009) Origins of the Maya forest garden: Maya resource management. *J Ethnobiol* 29:213–236
- Franco-Gaviria F, Correa-Metrio A, Cordero-Oviedo C, López-Pérez M, Cárdenes-Sandí GM, Romero FM (2018) Effects of late Holocene climate variability and anthropogenic stressors on the vegetation of the Maya highlands. *Quat Sci Rev* 189:76–90
- Gavin DG, Brubaker LB, Lertzman KP (2003) An 1800-year record of the spatial and temporal distribution of fire from the west coast of Vancouver Island, Canada. *Can J For Res* 33:573–586
- Gibson CC (2001) Forest resources: Institutions for local governance in Guatemala. In: Burger J, Ostrom E, Norgaard RB, Policansky D, Goldstein BD (eds) *Protecting the commons: a framework for resource management in the Americas*. Island Press, Washington, DC, pp 71–89
- Giglio L (2013) MODIS collection 5 active fire product user's guide (version 2.5). [https://cdn.earthdata.nasa.gov/conduit/upload/907/MODIS\\_Fire\\_Users\\_Guide\\_2.5.pdf](https://cdn.earthdata.nasa.gov/conduit/upload/907/MODIS_Fire_Users_Guide_2.5.pdf)
- Giglio L, Desclotres J, Justice CO, Kaufman Y (2003) An enhanced contextual fire detection algorithm for MODIS. *Remote Sens Environ* 87:273–282
- Google Maps (2019) Google Maps [online]. <https://www.google.com/maps/> (accessed 12 Mar 2019)
- Hansen RD (2001) The first cities: The beginnings of urbanization and state formation in the Maya Lowlands. *Maya, divine kings of the rain forest*, pp. 50–65
- Hansen RD (2012) The beginning of the end: conspicuous consumption and environmental impact of the Preclassic lowland Maya. *An Archaeological Legacy: Essays in honor of Ray T. Matheny*, pp 243–291
- Harvey WJ, Nogué S, Stansell N, Petrokofsky G, Steinman B, Willis KJ (2019) The legacy of pre-Columbian fire on the pine-oak forests of Upland Guatemala. *Front For Glob Change* 2:34
- Higuera PE, Peters ME, Brubaker LB, Gavin DG (2007) Understanding the origin and analysis of sediment-charcoal records with a simulation model. *Quat Sci Rev* 26:1,790–1,809
- Higuera PE, Gavin DG, Bartlein PJ, Hallett DJ (2011) Peak detection in sediment–charcoal records: impacts of alternative data analysis methods on fire-history interpretations. *Int J Wildland Fire* 19(996–1):014
- Holder CD (2006) The hydrological significance of cloud forests in the Sierra de las Minas Biosphere Reserve, Guatemala. *Geoforum* 37:82–93
- Holder CD, Chase G (2012) The role of remittances and decentralization of forest management in the sustainability of a municipal-communal pine forest in eastern Guatemala. *Environ Develop Sustainability* 14:25–43
- Ingersoll CA (1826) *A view of South America and Mexico*. H. Huntington, Jr, New York
- Jáuregui AB (1894) *Los Indios: Su historia y su civilizacion*. Establecimiento Tipográfico La Unión Biblioteca Digital AECID
- Juggins S (2009) rioja: analysis of Quaternary science data. R package version 0.5-6. <https://cran.r-project.org/package=rioja>
- Justice CO, Giglio L, Korontzi S, Owens J, Morisette JT, Roy D, Descloitres J, Alleaume S, Petitcolin F, Kaufman Y (2002) The MODIS fire products. *Remote Sens Environ* 83:244–262
- Justice C, Giglio L, Boschetti L, Roy D, Csizsar I (2006) MODIS fire products. [https://modis.gsfc.nasa.gov/data/atbd/atbd\\_mod14.pdf](https://modis.gsfc.nasa.gov/data/atbd/atbd_mod14.pdf)
- Kappelle M (2006) Neotropical montane oak forests: overview and outlook. In: Kappelle M (ed) *Ecology and conservation of neotropical montane oak forests*. Springer, Berlin, Heidelberg, pp 449–467
- Leyden BW (1987) Man and climate in the Maya lowlands. *Quatern Res* 28:407–414
- Livingstone DA (1955) A lightweight piston sampler for lake deposits. *Ecology* 36:137–139
- Lovell WG (1983) Landholding in Spanish Central America: Patterns of ownership and activity in the Cuchumatán highlands of Guatemala, 1563–1821. *Trans Inst Br Geogr* 8:214–230
- Lovell WG (1985) *Conquest and survival in Colonial Guatemala: a historical geography of the Cuchumatán Highlands, 1500–1821*. McGill-Queen's University Press, Montreal
- Lynch JA, Clark JS, Stocks BJ (2004) Charcoal production, dispersal, and deposition from the Fort Providence experimental fire: interpreting fire regimes from charcoal records in boreal forests. *Can J For Res* 34:1,642–1,656
- MacLeod MJ (1973) *Spanish Central America: a socioeconomic history, 1520–1720*. University of California Press, Berkeley
- Maher LJ (1981) Statistics for microfossil concentration measurements employing samples spiked with marker grains. *Rev Palaeobot Palynol* 32:153–191
- Malik WA, Piepho HP (2016) On a new family of shifted logarithmic transformations. *J Stat Comput Simul* 86:1,697–1,708
- Martin AC, Harvey WJ (2017) The Global Pollen Project: a new tool for pollen identification and the dissemination of physical reference collections. *Methods Ecol Evol* 8:892–897
- Metcalf SE, Barron JA, Davies SJ (2015) The Holocene history of the North American Monsoon: 'known knowns' and 'known unknowns' in understanding its spatial and temporal complexity. *Quat Sci Rev* 120:1–27
- Miles J (1987) Vegetation succession: past and present perceptions. In: Gray AJ, Crawley MJ, Edwards PJ (eds) *Colonization, succession and stability: the 26th Symposium of the British Ecological Society held jointly with the Linnean Society of London*. Blackwell Scientific Publications, Oxford, pp 1–29
- Mueller AD, Islebe GA, Hillesheim MB, Grzesik DA, Anselmetti FS, Ariztegui D, Brenner M, Curtis JH, Hodell DA, Venz KA (2009) Climate drying and associated forest decline in the lowlands of northern Guatemala during the late Holocene. *Quat Res* 71:133–141
- Muller CH (1942) *The Central American Species of Quercus*. Miscellaneous Publication No. 477. US Government Printing Office, Washington
- Murdoch DJ, Chow ED (1996) A graphical display of large correlation matrices. *Am Stat* 50:178–180
- Neff H, Pearsall DM, Jones JG, Arroyo B, Collins SK, Freidel DE (2006) Early Maya adaptive patterns: Mid-late Holocene paleoenvironmental evidence from Pacific Guatemala. *Lat Am Antiq* 17:287–315

- Nigh R (2008) Trees, fire and farmers: making woods and soil in the Maya forest. *J Ethnobiol* 28:231–243
- Oksanen J, Blanchet FG, Kindt R, Legendre P, Minchin PR, O'Hara RB, Simpson GL, Solymos P, Stevens MHH, Wagner H (2015) *vegan: community ecology package*. R package *vegan*, vers. 2.2-1. <https://cran.r-project.org/>
- Oldfield F, Appleby PG (1984) Empirical testing of 210 Pb-dating models for lake sediments. In: Haworth EY, Lund JWG (eds) *Lake sediments and environmental history*. University of Minnesota Press, Minneapolis, pp 93–124
- Oliveras I, Anderson LO, Malhi Y (2014) Application of remote sensing to understanding fire regimes and biomass burning emissions of the tropical Andes. *Glob Biogeochem Cycles* 28:480–496
- OxLEL (2016) Pollen Preparation Procedure. Oxford Long-Term Ecology Lab. Protocols. <https://oxlel.zoo.ox.ac.uk/wp-content/uploads/2016/10/OxLEL-Fossil-pollen-extraction-protocol.pdf> (accessed 13 June 2018)
- Petersen ME, Higuera PE (2007) Quantifying the source area of macroscopic charcoal with a particle dispersal model. *Quatern Res* 67:304–310
- Pira JP, Marcos C, Garzona E (1999) *Patrones de Uso del Bosque Espinoso Seco, en el Norte del Valle del Motagua*. Asociación de Investigación y Estudios Sociales, Guatemala
- Core Team R (2012) *R: a language and environment for statistical computing*. R Foundation for Statistical Computing, Vienna, Austria
- Ramírez-Marcial N, González-Espinosa M, Williams-Linera G (2001) Anthropogenic disturbance and tree diversity in montane rain forests in Chiapas, Mexico. *For Ecol Manage* 154:311–326
- Ramsey CB (2008) Deposition models for chronological records. *Quat Sci Rev* 27:42–60
- Ramsey CB (2009) Bayesian analysis of radiocarbon dates. *Radiocarbon* 51:337–360
- Recinos A (1954) *Monografía del departamento de Huehuetenango (Guatemala)*. Editorial del Ministerio de Educación Pública
- Redo D, Bass JOJ, Millington AC (2009) Forest dynamics and the importance of place in western Honduras. *Appl Geogr* 29:91–110
- Reimer PJ, Bard E, Bayliss A et al (2013) *IntCal13 and Marine13 radiocarbon age calibration curves 0–50,000 years cal BP*. *Radiocarbon* 55:1,869–1,887
- Reyes EV (1998) *Poder Local y Bosques Comunales en Totonicapán: Estudio de un Caso*. Facultad Latinoamericana de Ciencias Sociales, Guatemala
- Roubik DW, Moreno PJE (1991) Pollen and spores of Barro Colorado Island. *Monographs in systematic botany from the Missouri Botanical Garden* 36. Missouri Botanical Garden, St. Louis
- Rzedowski J (2006) *Vegetación de México*. 1ra. Edición Digital, Comisión Nacional para el Conocimiento y Uso de la Biodiversidad, México
- Sherman WL (1979) *Forced native labor in sixteenth-century Central America*. University of Nebraska Press, Lincoln
- Stansell ND, Steinman BA, Abbott MB, Rubinov M, Roman-Lacayo M (2013) Lacustrine stable isotope record of precipitation changes in Nicaragua during the Little Ice Age and Medieval Climate Anomaly. *Geology* 41:151–154
- Stansell ND, Steinman BA, Lachniet MS, Feller J, Harvey W, Fernandez A, Shea CJ, Price B, Coenen J, Boes M, Perdziola S (2020) A lake sediment stable isotope record of late-middle to late Holocene hydroclimate variability in the western Guatemala highlands. *Earth Planet Sci Lett* 542:116327
- Stockmarr J (1971) Tablets with spores used in absolute pollen analysis. *Pollen Spores* 8:615–621
- Ter Braak CJF, Prentice IC (1988) A theory of gradient analysis. In: Begon M, Fitter AH, Ford ED, Macfadyen A (eds) *Advances in ecological research*, vol 18. Academic Press, London, pp 271–317
- Thompson JES (ed) (1958) *Thomas Gage's travels in the New World*. University of Oklahoma Press, Norman
- Tucker CM (2008) *Changing forests: collective action, common property, and coffee in Honduras*. Springer, New York
- Urrea OS (1995) Economic and institutional analysis of agroforestry projects in Guatemala. In: Current D, Lutz E, Scherr S (eds) *Costs, benefits, and farmer adoption of agroforestry: project experience in Central America and the Caribbean*. The World Bank, Washington, DC, pp 96–113
- Van Kempen L, Muradian R, Sandoval C, Castaneda JP (2009) Too poor to be green consumers? A field experiment on revealed preferences for firewood in rural Guatemala. *Ecol Econ* 68:2,160–2,167
- Van Oss AC (1986) *Catholic Colonialism. A Parish History of Guatemala, 1524–1821*. Cambridge University Press, Cambridge
- Van Wieren SE (1996) *Digestive strategies in ruminants and nonruminants*. Proefschrift, Landbouw universiteit, Wageningen
- Vázquez F, Lamadrid L (1944) *Crónica de la provincia del Santísimo nombre de Jesús de Guatemala de la orden de n. seráfico padre san Francisco en el reino de la Nueva España (Vol. 14)*. Tipografía nacional
- Veblen TT (1974) *The ecological, cultural, and historical bases of forest preservation in Totonicapán, Guatemala*. Ph.D. Thesis, University of California, Berkeley
- Veblen TT (1976) The urgent need for forest conservation in highland Guatemala. *Biol Conserv* 9:141–154
- Veblen TT (1978) Forest preservation in the western highlands of Guatemala. *Geogr Rev* 68:417–434
- Velez MI, Curtis JH, Brenner M, Escobar J, Leyden BW, Popenoe de Hatch M (2011) Environmental and cultural changes in highland Guatemala inferred from Lake Amatitlán sediments. *Geoarchaeology* 26:346–364
- Wahl D, Hansen RD, Byrne R, Anderson L, Schreiner T (2016) Holocene climate variability and anthropogenic impacts from Lago Paixban, a perennial wetland in Peten, Guatemala. *Glob Planet Chang* 138:70–81
- Wallace J, Aquilué N, Archambault C, Carpentier S, Francoeur X, Greffard MH, Laforest I, Galicia L, Messier C (2015) Present forest management structures and policies in temperate forests of Mexico: Challenges and prospects for unique tree species assemblages. *Forestry Chronicle* 91:306–317
- Walsh MK, Prufer KM, Culleton BJ, Kennett DJ (2014) A late Holocene paleoenvironmental reconstruction from Agua Caliente, southern Belize, linked to regional climate variability and cultural change at the Maya polity of Uxbenká. *Quat Res* 82:38–50
- Whitlock C, Larsen C (2002) Charcoal as a fire proxy. In: Smol JP, Birks HJB, Last WM (eds) *Tracking environmental change using lake sediments*, vol 3. Kluwer Academic Publishers, Dordrecht, pp 75–97
- Wilken GC (1971) Food-producing systems available to the ancient Maya. *American Antiquity*, pp. 432–448
- Willard DA, Bernhardt CE, Weimer L, Cooper SR, Gamez D, Jensen J (2004) Atlas of pollen and spores of the Florida Everglades. *Palynology* 28:175–227
- Willis KJ, Gillson L, Brncic TM (2004) How “virgin” is virgin rainforest? *Science* 304:402–403

**Publisher's Note** Springer Nature remains neutral with regard to jurisdictional claims in published maps and institutional affiliations.