

Partial meniscectomy is associated with increased risk of incident radiographic osteoarthritis and worsening cartilage damage in the following year

Frank W. Roemer^{1,2} · C. Kent Kwoh³ · Michael J. Hannon⁴ ·
David J. Hunter⁵ · Felix Eckstein⁶ · Jason Grago⁴ ·
Robert M. Boudreau⁷ · Martin Englund⁸ · Ali Guermazi¹

Received: 4 November 2015 / Revised: 4 April 2016 / Accepted: 8 April 2016 / Published online: 27 April 2016
© European Society of Radiology 2016

Abstract

Objectives To assess whether partial meniscectomy is associated with increased risk of radiographic osteoarthritis (ROA) and worsening cartilage damage in the following year.

Methods We studied 355 knees from the Osteoarthritis Initiative that developed ROA (Kellgren-Lawrence grade ≥ 2),

Electronic supplementary material The online version of this article (doi:10.1007/s00330-016-4361-z) contains supplementary material, which is available to authorized users.

✉ Frank W. Roemer
frank.roemer@uk-erlangen.de; froemer@bu.edu

- ¹ Quantitative Imaging Center, Department of Radiology, Boston University School of Medicine, FGH Building, 3rd floor, 820 Harrison Avenue, Boston, MA 02118, USA
- ² Department of Radiology, University of Erlangen-Nuremberg, Maximiliansplatz 1, 91054 Erlangen, Germany
- ³ University of Arizona Arthritis Center & University of Arizona College of Medicine, 1501 N Campbell Ave, Tucson, AZ 85724, USA
- ⁴ Division of Rheumatology and Clinical Immunology, University of Pittsburgh School of Medicine, S700 Biomedical Science Tower, 3500 Terrace Street, Pittsburgh, PA 15261, USA
- ⁵ Department of Rheumatology, Royal North Shore Hospital and Kolling Institute, University of Sydney, Pacific Hwy, St Leonards NSW 2065, Australia
- ⁶ Institute of Anatomy, Paracelsus Medical University, Strubergasse 21, 5020 Salzburg, Austria
- ⁷ Department of Epidemiology, University of Pittsburgh Graduate School of Public Health, 130 De Soto Street, Pittsburgh, PA 15261, USA
- ⁸ Clinical Epidemiology Unit, Orthopaedics, Department of Clinical Sciences Lund, Lund University, Klinikgatan 22, SE-221 85 Lund, Sweden

which were matched with control knees. The MR images were assessed using the semi-quantitative MOAKS system. Conditional logistic regression was applied to estimate risk of incident ROA. Logistic regression was used to assess the risk of worsening cartilage damage in knees with partial meniscectomy that developed ROA.

Results In the group with incident ROA, 4.4 % underwent partial meniscectomy during the year prior to the case-defining visit, compared with none of the knees that did not develop ROA. All ($n=31$) knees that had partial meniscectomy and 58.9 % ($n=165$) of the knees with prevalent meniscal damage developed ROA (OR=2.51, 95 % CI [1.73, 3.64]). In knees that developed ROA, partial meniscectomy was associated with an increased risk of worsening cartilage damage (OR=4.51, 95 % CI [1.53, 13.33]).

Conclusions The probability of having had partial meniscectomy was higher in knees that developed ROA. When looking only at knees that developed ROA, partial meniscectomy was associated with greater risk of worsening cartilage damage.

Key Points

- Partial meniscectomy is a controversial treatment option for degenerative meniscal tears.
- Partial meniscectomy is strongly associated with incident osteoarthritis within 1 year.
- Partial meniscectomy is associated with increased risk of worsening cartilage damage.

Keywords Meniscus · Partial meniscectomy · Cartilage loss · MRI · Osteoarthritis

Abbreviations

MRI Magnetic resonance imaging
ROA Radiographic osteoarthritis

RCT	Randomized controlled trial
OAI	Osteoarthritis Initiative
K-L	Kellgren-Lawrence
P0	OAI annual visit when radiographic osteoarthritis was diagnosed
P-1	OAI annual visit 1 year prior to diagnosis of radiographic osteoarthritis

Introduction

With the introduction of arthroscopic surgical techniques and increasing awareness of the burden of osteoarthritis (OA) following total meniscectomy, partial meniscectomy became the preferred procedure to treat meniscal tears in the last three decades, and the concept of meniscal repair was revived and refined. This further led to the current surgical understanding of preserving as much intact meniscal tissue and function as possible [1, 2]. Although partial meniscectomy is associated less with OA than with total meniscectomy [3], controversy remains as to the best treatment option for patients with meniscal damage [4].

Five randomized clinical trials (RCTs) have been published in recent years assessing arthroscopic partial meniscectomy versus conservative treatment in relation to clinical outcome in patients with degenerative meniscus tears [5–9]. Patients included in these RCTs had mixed stages of radiographic OA, but most had no or only low-grade disease. While all of these studies focused primarily on clinical outcomes, data on the structural consequences of partial meniscectomy on knees without OA are not available [10].

Considering that loss of meniscal function is one of the greatest risk factors for incident knee OA identified to date [11], and partial meniscectomy is the most common type of orthopedic surgery performed [12], the role of surgery is of particular interest for both the patients with knee symptoms and the health professionals treating them. The Osteoarthritis Initiative (OAI) is a unique dataset that can help provide answers to some of these questions.

The primary aim of the current study, therefore, was to assess whether partial meniscectomy was associated with increased risk of incident radiographic OA. As a secondary objective, we aimed to determine whether partial meniscectomy was associated with worsening of MRI-defined cartilage damage during the year following the procedure in knees that developed ROA.

Methods

The Osteoarthritis Initiative (OAI)

The OAI is an ongoing longitudinal cohort study designed to identify biomarkers of the onset and/or progression of knee

OA. Both knees of 4796 participants were studied using 3-Tesla (3 T) MRI and fixed–flexion radiography at baseline and at 12, 24, 36, and 48 months of follow-up [13, 14]. The institutional review boards at each of the sites approved the study and all participants gave informed consent.

Radiography

OAI knee radiographs were acquired using the posterior–anterior fixed–flexion weight-bearing protocol [14, 15] with a plexiglass positioning frame (SynaFlexer™; Synarc Inc., San Francisco, CA) [16]. The Kellgren-Lawrence (K-L) grade was determined by central readings of serial fixed–flexion knee radiographs [15]. In brief, each film was centrally assessed by two senior musculoskeletal experts, who are not co-authors and who were blinded to each other's reading and all other data. All radiographs were read in pairs for each participant. The weighted kappa for inter-reader agreement was 0.79 for the K-L grade. Pre-specified discrepancies were adjudicated in a consensus session with a third reader [17].

Case and control knee selection

Cases were defined as study participants who had at least one knee that developed incident radiographic OA during the 4 years of follow-up. Incident radiographic OA was defined as the first occurrence of radiographic findings compatible with OA (K-L grade of ≥ 2) during the course of study. This time point was referred to as P0, with P-1, P-2, P-3, and P-4 representing the time points 1, 2, 3, and 4 years prior to incident radiographic OA. All participants with available MRI images at the point when incidence was read (P0) or the prior time point (P-1) were included. An identical number of control knees were selected that did not develop incident radiographic OA during the study period. The controls were matched to case knees according to gender, age (within 5 years), and K-L status of both the index and contralateral knees. Each case was matched to those who were at risk at the time of case occurrence and those with available images at relevant time points, whether at 12, 24, 36, or 48 months of follow-up. Both case and control knees were either K-L 0 or 1 at baseline. Altogether, 355 case knees and 355 controls were included. A detailed overview of subject inclusion is presented as a flow chart in Fig. 1. Note that knees that showed incident OA at the first follow-up (12 months), that were K-L grade 1 at baseline and had prevalent OA in the contralateral knee were not read or matched because of concerns that they would be too similar to knees with prevalent OA.

MRI acquisition

MRI of both knees was performed on 3T systems (MAGNETOM Trio; Siemens Healthcare, Erlangen,

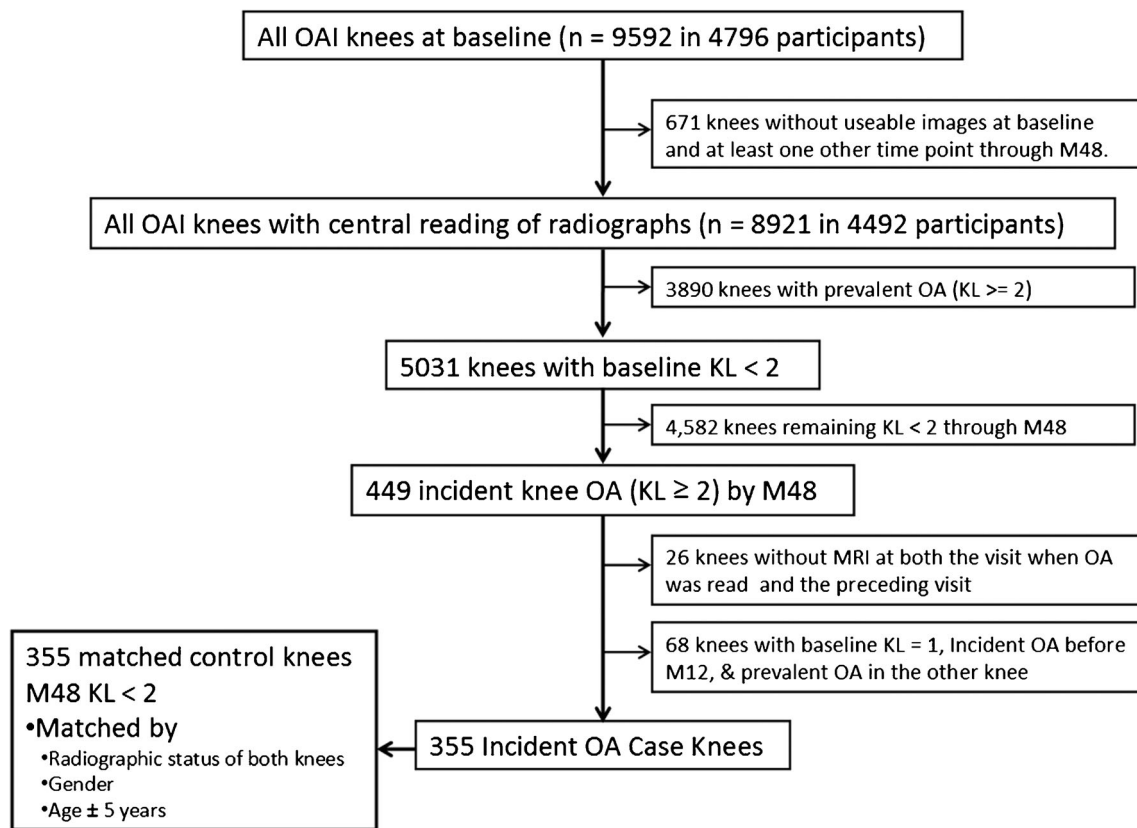


Fig. 1 Flowchart of subject inclusion

Germany) at the four OAI clinical sites. MRIs were acquired with a dedicated quadrature transmit/receive knee coil using a coronal intermediate-weighted (IW) two-dimensional (2D) turbo spin-echo, a sagittal three-dimensional (3D) dual-echo steady-state (DESS) sequence, and a sagittal IW fat-suppressed turbo spin-echo sequence. Additional parameters of the full OAI pulse sequence protocol and the sequence parameters were described in detail in a previous publication [13].

MRI assessment

Two musculoskeletal radiologists with 11 (FWR) and 14 (AG) years of experience in semiquantitative assessment of knee OA, and who were blinded to clinical data and case-control status, evaluated the MRIs for medial and lateral meniscal damage and for cartilage morphology at the prior time point and at the case-defining visit using the semiquantitative MRI Osteoarthritis Knee Score (MOAKS) system [18].

Cartilage was scored in 14 articular subregions, incorporating area size per subregion (from 0 to 3) and percentage of subregion that was affected by full-thickness cartilage loss (from 0 to 3). For the current analysis, only the ten tibiofemoral subregions were considered. Longitudinal cartilage loss was defined as any increase in either size or thickness of cartilage damage, or both.

Meniscal status was scored in the anterior horn, body segment, and posterior horn of the medial and lateral menisci, taking into account intrameniscal signal changes, different types of meniscal tears, and meniscal maceration, i.e., substance loss.

In order to adjust for additional confounders of longitudinal cartilage loss, bone marrow lesions (BMLs) were assessed, taking into account the percentage of a subregion affected by the BML. Signal alterations in the intercondylar region of Hoffa's fat pad were scored as a surrogate for synovial thickening, termed Hoffa-synovitis. Joint effusion (also called effusion-synovitis, as it is not possible to discern joint fluid from synovial thickening based on the sequences used in the OAI pulse sequence protocol) was graded based on the estimated maximum distention of the synovial cavity. Finally, meniscal extrusion was scored in the coronal planes [18, 19].

To determine intra-reader reliability, one radiologist (FWR) re-scored 20 randomly chosen MRIs in random order for the same features after a 4-week interval. Inter-observer reliability between the two readers was assessed using the same 20 cases.

Definition of meniscal surgery

At each visit, OAI participants were asked about meniscal surgery within the previous year. Images for all potential

surgical cases were re-analyzed by an experienced musculoskeletal radiologist to confirm missing meniscal substance compared to the previous visit, indicating a partial meniscectomy. Two knees (one from a knee that developed OA) in which self-reported meniscal surgery could not be confirmed because images were not available were removed from analyses involving surgery.

Statistical analyses

Descriptive comparisons generally included all knees with the relevant available MOAKS data. All knees had baseline meniscal status, but 25 knees were lacking that information at the 1-year point prior to incidence. For odds ratios, conditional logistic regression was applied to the 328 matched case–control pairs in which both had meniscal status data to assess the risk of incident radiographic OA. In addition, the risk of worsening cartilage damage during the year prior to developing radiographic OA was assessed, using a cohort analysis approach for the incident OA cases only, by applying logistic regression adjusted for body mass index (BMI) and the matching criteria (age, gender, and KL grade). An additional analysis was performed taking into account other potential structural confounders of longitudinal cartilage loss, i.e., prevalent cartilage damage in the medial and lateral compartments, effusion-synovitis, Hoffa-synovitis, and BMLs. In the bivariate analysis, differences were observed between incident knee OA cases undergoing partial meniscectomy and other incident knee OA cases not undergoing surgery, as well as in the rest of the cohort with regard to pain and previous injury status (at any point prior to the finding of ROA). Therefore, we performed sensitivity analyses incorporating these covariates into the model.

We considered a two-tailed *p* value of less than 0.05 as statistically significant. Weighted kappa statistics were applied to determine inter- and intra-observer reliability. All statistical calculations were performed using Stata/IC 11.2 for Windows (StataCorp LP, College Station, TX, USA) and SAS 9.2 (SAS Institute Inc., Cary, NC, USA).

Results

The study sample consisted of 355 case knees and their matched controls. Participants were 60.2 years old on average (SD±8.6), predominantly women (66.5 %), and overweight (mean BMI 28.3 SD±4.5). The baseline K-L grades for the matched pairs were as follows: 63 (17.8 %) grade 0 in both knees, 76 (21.4 %) grade 0 in one knee and grade 1 in the contralateral knee, 83 (23.4 %) grade 1 in both knees, 59 (16.6 %) grade 0 in one knee and grade≥2 in the other, and

74 (20.9 %) grade 1 in one knee and grade≥2 in the contralateral knee. The case-defining visit of radiographic OA incidence was 12 months for 119 (33.5 %), 24 months for 83 (23.4 %), 36 months for 103 (29.0 %), and 48 months for 50 (14.1 %) knees. Of 710 knees, 25 case knees had missing MRI readings at the time point prior to the case-defining visit (P-1), leaving 683 knees for the time point P-1. An overview of baseline demographics is presented in Table 1.

Summarizing the intra- and inter-observer reliability results, all of the measures showed substantial (0.61–0.8) or almost perfect agreement (0.81–1.0) [20]. Appendix 1 gives a detailed overview of the reliability results.

Thirty-one (4.4 %) of 708 knees underwent meniscal surgery in the year prior to the case-defining visit, and 238 (34.9 % of 683) knees had a meniscal tear (MOAKS grades 2–5) at the time point prior to the case-defining visit. Forty-two (6.2 %) knees showed partial meniscal maceration (MOAKS grade 6, i.e., substance loss, at the same time point). None showed a progressive partial or complete maceration. For five of the knees undergoing partial meniscectomy, MRI data for the year prior to the case-defining visit (P-1) were not available, leaving 26 knees with meniscal surgery for those analyses.

A detailed overview of meniscal and radiographic OA status at baseline and 1 year prior to the case-defining visit, and with regard to cartilage loss in the prior year, is presented in Table 2. For both the baseline visit and the visit 1 year prior to the case-defining visit, the frequencies of meniscal tears and macerations were higher in the case group than the controls (*p*=0.002 and <0.001, respectively).

Table 3 shows the distribution of meniscal damage for the medial and lateral compartments, collapsed into normal menisci and those exhibiting intrameniscal signal only, any tear type, and any maceration (partial or complete substance loss), which did not differ between surgery cases and other case knees. Pain and previous injury status is also shown. Knees undergoing surgery exhibited significantly higher pain scores and more previous injuries.

All 31 (100 %) knees that had undergone meniscal surgery during the previous year had developed incident radiographic OA at the next follow-up visit, while 50.2 % of the knees developing incident radiographic OA 1 year later had prevalent meniscal damage, compared to 32.5 % of the control knees not developing radiographic OA. A more than twofold greater risk for incident radiographic OA was observed for knees exhibiting prevalent tears or maceration, which is shown in Table 4.

Among all cases and controls, 37.4 % of knees with meniscal damage but not surgery and 80.8 % of knees with partial meniscectomy showed cartilage loss over the

Table 1 Sample description

		Sample description by knee				
		All knees <i>n</i> = 710 (%)	Case knees- incident ROA <i>n</i> = 355 (%)	Control knees- incident ROA <i>n</i> = 355 (%)	<i>p</i> for differences	
Baseline K-L grade	0	266 (37.46)	133 (37.46)	133 (37.46)	1.000	
	1	444 (62.54)	222(62.54)	222(62.54)		
Injury at baseline	Any	152 (21.41)	89 (25.07)	63 (17.75)	0.017	
		Sample description by person				
		All <i>n</i> = 669 (%)	Cases- incident ROA <i>n</i> = 323 (%)	Controls ROA <i>n</i> = 346 (%)	<i>p</i> for cases vs. controls	
Women		445 (66.52)	213 (65.94)	232 (67.05)	0.762	
White or Caucasian		551 (82.36)	260 (80.50)	291 (84.10)	0.221	
Body mass index					0.004	
	Normal/underweight	168 (25.11)	63 (19.50)	105 (30.35)		
	Overweight	268 (40.06)	135 (41.80)	133 (38.44)		
	Obese	233 (34.83)	125 (38.70)	108 (31.21)		
Age (\pm SD)		60.16 (\pm 8.56)	60.25 (\pm 8.69)	60.08 (\pm 8.44)	0.798	

Note: Test for differences by chi-square or *t* test

same 1-year follow-up period. For cases that developed ROA, prevalent meniscal damage was not associated with worsening cartilage damage in the tibiofemoral joint (odds ratio (OR)=0.98, 95 % confidence interval (CI) [0.58, 1.67]), but partial meniscectomy was strongly associated with worsening cartilage damage (OR=4.76, 95 % CI [1.63, 13.90]) compared to knees with normal meniscal morphology as the reference. For the fully adjusted model, prevalent meniscal damage again showed no association

with cartilage loss (OR=0.88, 95 % CI [0.51, 1.51]), but partial meniscectomy remained strongly associated (OR 4.51, 95 % CI [1.53, 13.33]). Details of these results are presented in Table 5. Figure 2 provides an illustrative example of partial meniscectomy between P-1 and P0 and subsequent development of ROA and cartilage loss.

An additional analysis incorporating the above-mentioned confounders for progression of cartilage damage plus pain status at P-1 and previous injury into the

Table 2 Frequency of meniscal damage and surgery status at enrollment and 1 year prior to the case-defining visit and outcome (incident radiographic osteoarthritis and cartilage loss)

Outcome (incident ROA / cartilage loss)	No incident ROA (%)	Incident ROA (%)	No cartilage loss – medial (%)	Any cartilage loss – medial (%)	No cartilage loss – lateral (%)	Any cartilage loss – lateral (%)
Meniscal status at OAI enrolment (BL)						
	(N = 708)			(N = 663 with cartilage loss data)		
Normal or intrameniscal signal at BL ^a	243 (68.5)	209 (59.0)	325 (63.9)	95 (61.7)	378 (65.0)	44 (51.2)
Tear at BL ^b	92 (26.0)	129 (36.4)	157 (30.8)	54 (35.1)	174 (29.9)	37 (43.0)
Meniscal maceration at BL ^c	19 (5.4)	16 (4.5)	27 (5.3)	5 (3.3)	30 (5.2)	5 (5.8)
Meniscal status at 1 year prior to case-defining visit (P-1)						
	(N = 683)			(N = 663 with cartilage loss data)		
Normal or intrameniscal signal at P-1 ^a	239 (67.5)	164 (49.9)	309 (60.7)	83 (53.9)	354 (60.8)	38 (46.9)
Tear at P-1 ^b	95 (26.8)	143 (43.5)	164 (32.2)	65 (42.2)	192 (33.0)	37 (45.7)
Meniscal maceration at P-1 ^c	20 (5.7)	22 (6.7)	36 (7.1)	6(3.9)	36 (6.2)	6 (7.4)
Meniscal surgery between P-1 and P0	0 (0.0)	31 (8.8)	8 (1.6)	18 (11.7)	22 (3.8)	4 (4.7)

^a MOAKS grades 0 and 1

^b MOAKS grades 2–5

^c MOAKS grades 6–8 (but only grade 6 observed)

ROA radiographic osteoarthritis, BL baseline, P-1 annual visit 1 year prior to case-defining visit, P0 annual visit at the time point when incident ROA was diagnosed (i.e., the case-defining visit)

Table 3 Frequency of medial and lateral meniscal damage, extrusion, injury and pain status 1 year prior to the case-defining visit (P-1)

Meniscal status by compartment, pain status and injury status at P-1	Control knees <i>n</i> = 354 (%)	Case knees - incident ROA <i>n</i> = 329 (%)	Surgery knees (all cases) <i>n</i> = 29 ^a (%)	<i>p</i> for case vs. control knees	<i>p</i> for surgery vs. cases
Medial meniscal morphology at P-1 (maximum grade of 3 subregions)				0.001*	0.236
Normal or Intrameniscal signal only	266 (75.1)	198 (60.2)	16 (55.2)		
Tear	68 (19.2)	113 (34.4)	13 (44.8)		
Radial tear	8 (2.3)	14 (4.3)	2 (6.9)		
Horizontal tear	56 (15.8)	81 (24.6)	9 (31.0)		
Vertical tear	1 (0.3)	6 (1.8)	1 (3.4)		
Complex tear	3 (0.9)	12 (3.6)	1(3.4)		
Partial maceration/substance loss	20 (5.6)	18 (5.5)	0 (0.0)		
Medial extrusion ≥ 2 mm at P-1	110 (31.1)	144 (43.8)	10 (38.5)	0.001*	0.730
Lateral meniscal morphology at P-1 (maximum grade of 3 subregions)				0.056	0.620
Normal or Intrameniscal signal only	312 (88.1)	276 (83.9)	26 (89.7)		
Tear	42 (11.9)	49 (14.9)	3 (10.3)		
Radial tear	9 (2.5)	5 (1.5)	0 (0.00)		
Horizontal tear	31 (8.8)	40 (12.2)	3 (10.3)		
Vertical tear	0 (0.2)	1 (0.3)	0 (0.00)		
Complex tear	2 (0.6)	3 (0.9)	0(0.00)		
Partial maceration/substance loss	0 (0.0)	4 (1.2)	0 (0.0)		
Lateral extrusion ≥ 2 mm at P-1	6(1.7)	17 (5.2)	1 (3.5)	0.028*	1.000
Previous injury ^b	70 (19.8)	135 (38.1)	20 (64.5)	<0.001*	<0.003*
KOOS pain at P-1	90.2 (13.5)	84.8 (16.6)	78.4 (20.6)	<0.001*	0.027*
WOMAC total at P-1	7.1 (11.1)	11.4 (13.8)	16.5 (18.1)	<0.001*	0.036*

^a Two knees with partial meniscectomy had no MRI at P-1 and were excluded from these analyses

^b Self-reported injury any time during the course of the OAI participation or prior enrollment

* Statistically significant

KOOS Knee Injury and Osteoarthritis Outcome Score, WOMAC Western Ontario and McMaster Universities Osteoarthritis Index

statistical model showed that the observed associations remained, although risk for cartilage loss decreased slightly, from 4.63 to 4.21. An overview of the expanded analyses incorporating pain and injury status is given in Table 6.

Discussion

In this nested case–control study, we found a much greater probability of having had partial meniscectomy in the previous year in knees that subsequently developed radiographic

Table 4 Incident radiographic osteoarthritis

Meniscal status at P-1 or surgery case	<i>N</i> (%) in controls <i>N</i> = 354	<i>N</i> (%) in incident ROA knees <i>N</i> = 329	Odds of incident ROA* (outcome) Crude odds ratio (95 % CI)
None/signal	239 (67.5 %)	164 (49.9 %)	Reference
Tear or maceration	115 (32.5 %)	165 (50.2 %)	2.51 (1.73, 3.64) ^a
Meniscal Surgery			
No	354 (100 %)	323 (91.2 %)	Reference
Yes	0 (0 %)	31 (8.8 %)	N/A

* Conditional logistic regression using 328 pairs with case and control data at P-1

^a After adjustment for BMI: OR = 2.66 (95 % CI 1.81–3.89)

CI confidence interval, ROA radiographic osteoarthritis, *N* number, N/A not applicable, P-1 time point/annual visit 1 year prior to case-defining visit

Table 5 Cartilage worsening in whole knee (medial and lateral compartments), knees developing radiographic osteoarthritis only

Meniscal status at P-1 or surgery case	No cartilage worsening <i>N</i> (%) <i>N</i> = 147	Cartilage worsening <i>N</i> (%) <i>N</i> = 162	Adjusted odds of cartilage loss (outcome) Crude odds ratio (95 % CI) ^a	Adjusted odds of cartilage loss (outcome) Crude odds ratio (95 % CI) ^b
No surgery / no meniscal damage	74 (50.3 %)	67 (41.4 %)	Reference	Reference
No surgery, but presence of meniscal damage (tear or maceration)	68 (46.2 %)	74 (45.7 %)	0.98 (0.58,1.67)	0.88 (0.51,1.51)
Meniscal surgery ^c	5 (3.4 %)	21 (13.0)	4.76 (1.63,13.90)*	4.51 (1.53,13.33)*

^a Logistic regression adjusted for matching criteria (radiographic OA severity defined by Kellgren-Lawrence grade of index and contralateral knee, age, gender) and BMI

^b Logistic regression adjusted for matching criteria (radiographic OA severity defined by Kellgren-Lawrence grade of index and contralateral knee, age, gender), BMI and prevalent MRI features (cartilage damage, effusion, synovitis, BMLs)

^c No data for five knees at P-1

CI confidence interval, BMI body mass index, P-1 annual visit 1 year prior to case-defining visit, BMLs bone marrow lesions

OA than in control knees. Furthermore, the probability of worsening cartilage damage was much higher in knees that had developed ROA and had undergone surgery compared to knees that had just developed ROA.

We recently reported on structural risk factors with regard to the development of radiographic OA in relation to several parameters, including the severity of tissue damage and the cumulative effects of the involvement of several joint structures [11]. The strongest association with OA was observed

whenever these tissue changes were present in the year prior to the case-defining visit, but none showed a comparable association with incident radiographic OA as was observed for subjects having had partial meniscectomy. However, also in that study, medial meniscus damage in particular—including meniscal tears and any kind of substance loss—strongly predicted incident ROA 1 or 2 years later [11].

Little information is available in the literature to date on subsequent risk of cartilage loss following meniscal surgery.

Fig. 2 Development of radiographic osteoarthritis (OA) after partial meniscectomy. **A.** Baseline anterior–posterior radiograph of the knee shows physiologic joint anatomy without signs of OA. **B.** 12-month follow-up image shows definite radiographic OA with presence of medial tibial and femoral osteophytes at the joint margin consistent with radiographic OA Kellgren-Lawrence grade 2. **C.** Corresponding baseline MRI confirms absence of structural findings of OA. **D.** Follow-up image confirms partial meniscectomy with missing meniscal substance of the meniscal body (black arrow) and incident cartilage thinning (white arrows). An incident osteophyte is also depicted on the MRI (arrowhead)

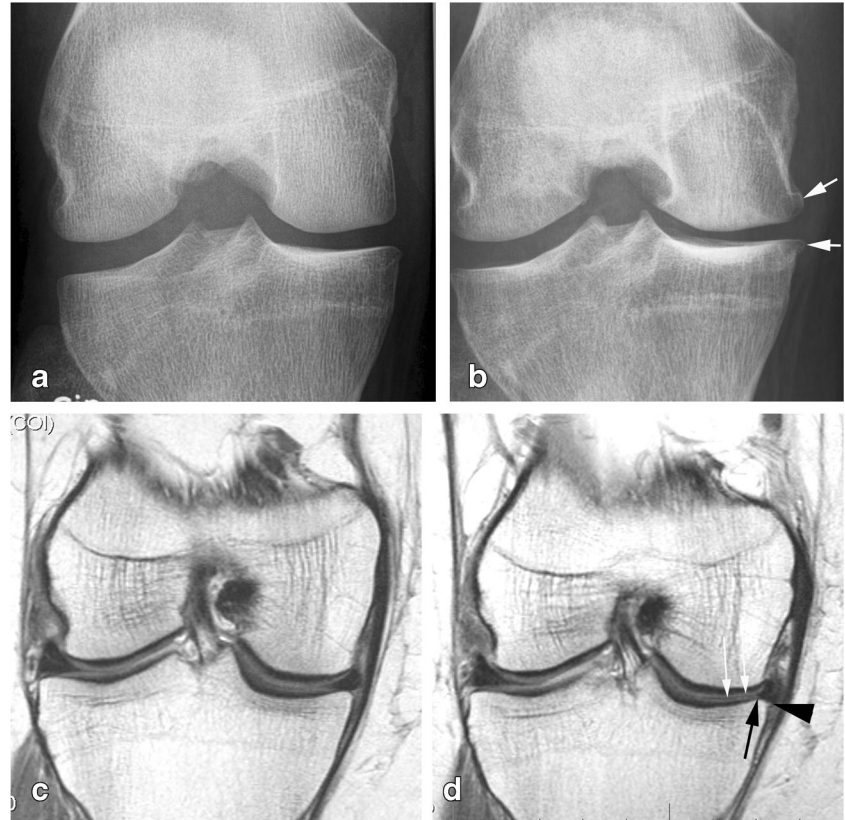


Table 6 Cartilage worsening in whole knee (medial and lateral compartments), knees developing radiographic osteoarthritis only

Meniscal status at P-1 or surgery case	Adjusted odds of cartilage loss (outcome) Crude OR (95 % CI) ^a	Adjusted odds of cartilage loss (outcome) Crude OR (95 % CI) ^a	Adjusted odds of cartilage loss (outcome) Crude OR (95 % CI) ^a	Adjusted odds of cartilage loss (outcome) Crude OR (95 % CI) ^b	Adjusted odds of cartilage loss (outcome) Crude OR (95 % CI) ^b
	add KOOS to model	add injury to model	add KOOS and injury to model	add KOOS to model	add injury to model
No surgery / no meniscal damage	Excluding adjustment for structural MRI features Reference	add injury to model Reference	add KOOS and injury to model Reference	Including adjustment for structural MRI features Reference	add injury to model Reference
No surgery, but presence of meniscal damage (tear or maceration)	0.95 (0.56,1.62)	0.96 (0.57,1.64)	0.93 (0.54,1.59)	0.86 (0.50,1.48)	0.84 (0.49,1.45)
Meniscal surgery ³	4.63 (1.57, 13.59)	4.51 (1.53,13.26)	4.36 (1.48,12.90)	4.52 (1.52,13.44)	4.21 (1.41,12.63)

^a Logistic regression adjusted for matching criteria (radiographic OA severity defined by Kellgren-Lawrence grade of index and contralateral knee, age, gender) and BMI

^b Logistic regression adjusted for matching criteria (radiographic OA severity defined by Kellgren-Lawrence grade of index and contralateral knee, age, gender), BMI and prevalent MRI features (cartilage damage, effusion, synovitis, BMLs)

³ No data for five knees at P-1

OR odds ratio, CI confidence interval, BMI body mass index, P-1 annual visit 1 year prior to case-defining visit, BMLs bone marrow lesions, KOOS knee osteoarthritis outcome score

One study of young athletes in the National Football League (NFL) in the United States who underwent MRI for various reasons reported that knees with previous meniscal surgery had a much higher prevalence of ipsi-compartmental full-thickness cartilage lesions (27 % vs. 12 % of those without meniscal surgery). This suggests that our findings may also be relevant for a younger active population, although reasons for meniscal surgery might differ from the indications in a non-athlete elderly patient cohort [21]. Furthermore, a repair approach, when feasible, seems to be superior to partial meniscectomy in terms of clinical outcomes [22]. In a sample at increased risk of developing radiographic OA in the Multicenter Osteoarthritis Study (MOST), for knees not undergoing surgery but with prevalent meniscal damage, the likelihood of radiographic OA within a 30-month period increased almost sixfold, which supports the importance not only of surgically induced meniscal alterations, but of meniscal integrity in general [23]. In our sample, we did find an increased risk of ROA but not of cartilage loss in knees with prevalent meniscal damage, which is likely due to the shorter follow-up period of 12 months compared to the 30 months of follow-up in the MOST study.

Our study has several limitations. One point that should be mentioned is that although the OAI is the largest longitudinal study of knee OA, only 31 knees underwent meniscal surgery within the observation period, and only 26 had MRI data available at the time point prior to the case-defining visit.

In addition, the definition of meniscal surgery was based on participants' answers to a question regarding prior meniscal surgery as part of a clinical assessment during the yearly OAI visits, and not on actual surgery reports. We confirmed self-reports of a partial meniscectomy by the diagnosis of missing meniscal substance on MRI at the follow-up visit, with none of the knees undergoing surgery having any meniscal maceration at the visit prior to surgery, suggesting that the confirmatory readings were valid and the surgeries correctly reported. We also did not explore potential reasons for the surgeries performed. Patients undergoing surgery had higher pain scores at the time point prior to the case-defining visit and more frequent reports of previous injury, which was reason to expand our analyses adding pain and prior knee injury to the model. Despite the odds ratios remaining markedly increased for those who had surgery compared to those who had prevalent meniscal damage only, we cannot fully rule out residual confounding by indication, i.e., those having had meniscus surgery may have had symptoms because of other features of pre-radiographic knee OA rather than symptoms from the meniscal lesion per se [8, 11, 24]. However, we found no significant differences associated with meniscal damage severity in any of the case knees or the entire cohort. Finally, we used a definition of radiographic OA only and did not take into account the clinical manifestation of OA. The meniscus is an important contributor to the normal medial and

lateral tibiofemoral joint space [25], and meniscal surgery may lead to a reduction in joint space width through a rapid decrease in the overall meniscal substance, thus contributing to the diagnosis of ROA [26]. In the current analysis, we did not assess other factors associated with meniscal pathology such as previous injury, and we also did not observe any meniscal root tears, another strong risk factor of structural progression and OA incidence [27]. Although we did assess meniscal extrusion in the coronal plane, as commonly assessed using semiquantitative scoring methods, we acknowledge that change in extrusion across the entire meniscus evaluated using 3D measurements is an alternative approach that we did not include but that might yield additional information [28].

We did include the 2D spin-echo sequences and the reformatted DESS sequence of the OAI protocol for semi-quantitative assessment [27]. While the additionally available T2 multi-echo spin-echo (MESE) sequence and fast low-angle shot (FLASH) sequences may add information when applying additional cartilage evaluation including 3D segmentation approaches and compositional evaluation, they do not add information when using scoring approaches [27]. As the OAI protocol was designed more than a decade ago, newer and potentially useful sequences for cartilage assessment were not included [13, 29].

Ultimately, given the data presented with regard to structural consequences and the recent clinical trials focusing on clinical outcomes, patients and their physicians should consider these findings in their clinical decision process. For the middle-aged patient with knee pain and a degenerative meniscal tear, a large body of evidence today suggests that an initial regimen of strengthening-based physical therapy should be the first step in treatment [10, 30].

In summary, the probability of having had partial meniscectomy in the previous year was higher in those who developed incident radiographic OA than in control knees. Furthermore, even when limited to knees that later developed ROA, worsening of cartilage damage within the same 1-year period was higher for knees undergoing partial meniscectomy than those with prevalent meniscal damage only. As partial meniscectomy may have deleterious effects on joint structure in knees without radiographic OA, the treatment alternatives for patients with meniscal damage and symptoms must be carefully discussed between patient and treating physician.

Acknowledgments The scientific guarantor of this publication is the first author, Frank Roemer. The data were presented at RSNA and at ECR 2015 as a podium presentation.

The authors of this manuscript declare no relationships with any companies, whose products or services may be related to the subject matter of the article.

The authors of this manuscript declare relationships with the following companies outside of this work: Dr. Guermazi has received consultancies, speaking fees, and/or honoraria from OrthoTrophix, Genzyme, Merck Serono and TissueGene, and is President and shareholder of Boston Imaging Core Lab (BICL), LLC, a company providing image assessment

services. Dr. Roemer is Chief Medical Officer and shareholder of BICL, LLC. Dr. Kwok has provided consulting services to Novartis and has received research support from AstraZeneca. Dr. Eckstein is CEO of Chondrometrics GmbH, a company providing MR image analysis services to academic researchers and to industry. He provides consulting services to Merck Serono, Novartis, and Sanofi-Aventis, has received speaker honoraria from Merck, Glaxo-Smith-Kline, Genzyme, Medtronic, and Synthes, and has received research support from Pfizer, Eli Lilly, Merck Serono, Glaxo-Smith-Kline, Centocor R&D, Wyeth, Novartis, and Stryker. Dr. Hunter receives royalties from DJO.

The study and image acquisition was funded by the OAI, a public-private partnership comprising five contracts (N01-AR-2-2258; N01-AR-2-2259; N01-AR-2-2260; N01-AR-2-2261; N01-AR-2-2262) funded by the National Institutes of Health, a branch of the Department of Health and Human Services, and conducted by the OAI Study Investigators. Private funding partners of the OAI include Merck Research Laboratories, Novartis Pharmaceuticals Corporation, GlaxoSmithKline, and Pfizer, Inc. Private sector funding for the OAI is managed by the Foundation for the National Institutes of Health.

The image analysis in this study was funded in part by a contract with the University of Pittsburgh (Pivotal OAI MRI Analyses [POMA]: NIH/NHLBI Contract No. HHSN2682010000 21C), and in part by a vendor contract from the OAI coordinating center at the University of California, San Francisco (N01-AR-2-2258).

The statistical data analysis was funded in part by a contract with the University of Pittsburgh (Pivotal OAI MRI Analyses [POMA]: NIH/NHLBI Contract No. HHSN2682010000 21C) and by the University of Pittsburgh Multidisciplinary Clinical Research Center (MCRC) for Rheumatic and Musculoskeletal Diseases (P60 AR054731).

Michael J. Hannon, Jason Grago and Robert Boudreau have significant statistical expertise. Institutional Review Board approval was obtained. Written informed consent was obtained from all subjects (patients) in this study. Methodology: retrospective, case-control study, multicenter study.

References

1. Lubowitz JH, Poehling GG (2011) Save the meniscus. *Arthroscopy* 27:301–302
2. Burns TC, Giuliani JR, Svoboda SJ, Owens BD (2011) Meniscus repair and transplantation techniques. *J Knee Surg* 24:167–174
3. Englund M, Lohmander LS (2004) Risk factors for symptomatic knee osteoarthritis fifteen to twenty-two years after meniscectomy. *Arthritis Rheum* 50:2811–2819
4. Englund M, Roemer FW, Hayashi D, Crema MD, Guermazi A (2012) Meniscus pathology, osteoarthritis and the treatment controversy. *Nat Rev Rheumatol* 8:412–419
5. Herrlin SV, Wange PO, Lapidus G, Hallander M, Werner S, Weidenhielm L (2013) Is arthroscopic surgery beneficial in treating non-traumatic, degenerative medial meniscal tears? A five year follow-up. *Knee Surg Sports Traumatol Arthrosc* 21:358–364
6. Katz JN, Brophy RH, Chaisson CE et al (2013) Surgery versus physical therapy for a meniscal tear and osteoarthritis. *N Engl J Med* 368:1675–1684
7. Yim JH, Seon JK, Song EK et al (2013) A comparative study of meniscectomy and nonoperative treatment for degenerative horizontal tears of the medial meniscus. *Am J Sports Med* 41:1565–1570
8. Sihvonen R, Paavola M, Malmivaara A et al (2013) Arthroscopic partial meniscectomy versus sham surgery for a degenerative meniscal tear. *N Engl J Med* 369:2515–2524
9. Gauffin H, Tagesson S, Meunier A, Magnusson H, Kvist J (2014) Knee arthroscopic surgery is beneficial to middle-aged patients

- with meniscal symptoms: a prospective, randomised, single-blinded study. *Osteoarthr Cartil* 22:1808–1816
10. Thorlund JB, Juhl CB, Roos EM, Lohmander LS (2015) Arthroscopic surgery for degenerative knee: systematic review and meta-analysis of benefits and harms. *BMJ* 350:h2747
 11. Roemer FW, Kwok CK, Hannon MJ et al (2015) What comes first? Multi-tissue involvement leading to radiographic osteoarthritis: MRI-based trajectory analysis over 4 years in the Osteoarthritis Initiative. *Arthritis Rheumatol* 67:2085–2096
 12. Katz JN, Martin SD (2009) Meniscus—Friend or foe: epidemiologic observations and surgical implications. *Arthritis Rheum* 60:633–635
 13. Peterfy CG, Schneider E, Nevitt M (2008) The osteoarthritis initiative: report on the design rationale for the magnetic resonance imaging protocol for the knee. *Osteoarthr Cartil* 16:1433–1441
 14. Nevitt MC, Felson DT, Lester G. The Osteoarthritis Initiative: protocol for the cohort study. p. 19–20. URL: <http://oai.epi-ucsf.org/datarelease/docs/StudyDesignProtocol.pdf>. Accessed June 23, 2015
 15. Radiographic procedure manual for examinations of the knee, hand, pelvis and lower limbs. Version 2.1. August 2006. URL: <http://oai.epi-ucsf.org/datarelease/operationsManuals/RadiographicManual.pdf>. Accessed June 23, 2015
 16. Kothari M, Guermazi A, von Ingersleben G et al (2004) Fixed-flexion radiography of the knee provides reproducible joint space width measurements in osteoarthritis. *Eur Radiol* 14:1568–1573
 17. Appendix A. Project 15: reader discrepancies and adjudication procedures. OAI central reading of knee x-rays for K-L grade and individual features of knee OA 2013; p. 8. URL: http://oai.epi-ucsf.org/datarelease/forms/kXR_SQ_BU_Descrip.pdf?V01XRKL. Accessed June 23, 2015
 18. Hunter DJ, Guermazi A, Lo GH et al (2011) Evolution of semi-quantitative whole joint assessment of knee OA: MOAKS (MRI Osteoarthritis Knee Score). *Osteoarthr Cartil* 19:990–1002
 19. Roemer FW, Hunter DJ, Crema MD, Kwok CK, Ochoa-Albiztegui E, Guermazi A (2015) An illustrative overview of semi-quantitative MRI scoring of knee osteoarthritis: lessons learned from longitudinal observational studies. *Osteoarthr Cartil*. doi:10.1016/j.joca.2015.08.011
 20. Landis JR, Koch GG (1977) The measurement of observer agreement for categorical data. *Biometrics* 33:159–174
 21. Nepple JJ, Wright RW, Matava MJ, Brophy RH (2012) Full-thickness knee articular cartilage defects in national football league combine athletes undergoing magnetic resonance imaging: prevalence, location, and association with previous surgery. *Arthroscopy* 28:798–806
 22. Stein T, Mehling AP, Welsch F, von Eisenhart-Rothe R, Jager A (2010) Long-term outcome after arthroscopic meniscal repair versus arthroscopic partial meniscectomy for traumatic meniscal tears. *Am J Sports Med* 38:1542–1548
 23. Englund M, Guermazi A, Roemer FW, et al (2009) Meniscal tear in knees without surgery and the development of radiographic osteoarthritis among middle-aged and elderly persons: The Multicenter Osteoarthritis Study. *Arthritis Rheum*
 24. Englund M, Guermazi A, Gale D et al (2008) Incidental meniscal findings on knee MRI in middle-aged and elderly persons. *N Engl J Med* 359:1108–1115
 25. Amin S, LaValley MP, Guermazi A et al (2005) The relationship between cartilage loss on magnetic resonance imaging and radiographic progression in men and women with knee osteoarthritis. *Arthritis Rheum* 52:3152–3159
 26. Kim SJ, Lee SK, Kim SH et al (2015) Does decreased meniscal thickness affect surgical outcomes after medial meniscectomy? *Am J Sports Med* 43:937–944
 27. Alizai H, Roemer FW, Hayashi D, Crema MD, Felson DT, Guermazi A (2015) An update on risk factors for cartilage loss in knee osteoarthritis assessed using MRI-based semiquantitative grading methods. *Eur Radiol* 25:883–893
 28. Bloecker K, Wirth W, Guermazi A, Hitzl W, Hunter DJ, Eckstein F (2015) Longitudinal change in quantitative meniscus measurements in knee osteoarthritis—data from the Osteoarthritis Initiative. *Eur Radiol* 25:2960–2968
 29. Van Dyck P, Vanhevel F, Vanhoenacker FM et al (2015) Morphological MR imaging of the articular cartilage of the knee at 3 T—comparison of standard and novel 3D sequences. *Insights Imaging* 6:285–293
 30. Katz JN, Losina E (2014) Arthroscopic partial meniscectomy for degenerative tears: where do we stand? *Osteoarthr Cartil* 22:1749–1751