



Embryological development of the human cranio-facial arterial system: a pictorial review

Lorenzo Bertulli¹ · Thomas Robert¹

Received: 7 November 2020 / Accepted: 7 January 2021 / Published online: 25 January 2021
© The Author(s) 2021

Abstract

The embryological development of the cerebral vasculature is very complex. Historical and also more recent studies based on human embryos, comparative anatomy and cerebral angiographies allowed us to better understand this vasculature development. The knowledge and understanding of such embryological development are important for physicians interested in neurovascular pathologies. Indeed, all vascular variants and almost all vascular pathologies, such as aneurysms, dolichoectasia, atherosclerosis, and neurovascular conflicts could be explained by an alteration during the embryological life. There are also many variants of these vascular structures present in normal developed adults, which are variably associated with pathological entities. Understanding the process which leads to the development of the normal cerebral arterial system in humans is, therefore, very important to have a better knowledge of the possible clinical and surgical implications of these anomalies. In this paper, we review the embryological development of the cranio-facial arterial vasculature from its beginning at approximately days 21–50 of intrauterine life, with pictures illustrating each developmental phase.

Keywords Cranial arteries · Embryologic development · Pathophysiology · Variants

Abbreviations

AA	Arterial arch	Cran	Cranial
ACA	Anterior cerebral artery	DA	Dorsal aorta
AChA	Anterior choroidal artery	DieA	Diencephalic artery
AICA	Antero-inferior cerebellar artery	DOA	Dorsal ophthalmic artery
AntEthA	Anterior ethmoidal artery	Div	Division
AoArch	Aortic arch	DuctArt	<i>Ductus arteriosus</i>
Art trunk	Arterial trunk	ECA	External carotid artery
AurTempA	Auriculo-temporal artery	ExtMaxA	External maxillary artery
AxA	Axillary artery	FrontA	Frontal artery
BA	Basilar artery	FrontN	Frontal nerve
BrachA	Brachial artery	HeubA	Recurrent artery of Heubner
CarDuct	Carotid duct	HA	Hypoglossal artery
CarTympA	Carotico-tympanic artery	HyA	Hyoid artery
Caud	Caudal	HyalA (CRA)	Hyaloid artery (central retinal artery)
CCA	Common carotid artery	ICA	Internal carotid artery
ChTN	Chorda tympani nerve	InfAlvA	Inferior alveolar artery
Contralat	Contralateral artery	Infraorb	Infraorbital
ComNasCilA	Common nasal ciliary artery	InnA	Innominate artery (brachio-cephalic trunk)
ComTempCilA	Common temporal ciliary artery	Interseg CervA	Intersegmental cervical artery
		IntMammAIntAudA	Internal mammillary auditory artery
		IntMaxA	Internal maxillary artery
		LingA	Lingual artery

✉ Lorenzo Bertulli
lorenzo.bertulli@eoc.ch

¹ Department of Neurosurgery, Neurocenter of the Southern Switzerland, Via Tesserete 46, 6903 Lugano, TI, Switzerland

LNA	Longitudinal neural artery
MandA	Mandibular artery
MaxA	Maxillary artery
MCA	Middle cerebral artery
MedStrA	Medial striate artery
MesA	Mesencephalic artery
MetA	Metencephalic artery
MMA	Middle meningeal artery
N	Nerve
OA	Ophthalmic artery
OccA	Occipital artery
Olf	Olfactory
OlfA	Olfactory artery
Opt	Optic
OpV	Optic vesicle
OtA	Otic artery
OtV	Otic vesicle
P	Primitive
p1stCerv	First cervical segmental artery
PChA	Posterior choroidal artery
PCoA	Posterior communicating artery
Plac	Placode
PICA	Postero-inferior cerebellar artery
Pin	Pineal primordium
PostAurA	Posterior auricular artery
PulmA	Pulmonary artery
Reg	Regressing
Pulm trunk	Pulmonary trunk
Remn	Remnant
SA	Stapedial artery
SA (max)	Mandibulo-maxillary division of stapedial artery
SCA	Superior cerebellar artery
SHA	Superior hypophyseal artery
SubclA	Subclavian artery
SupPetN	Superior petrosal nerve
SupraorbA	Supraorbital artery
SupThyrA	Superior thyroid artery
TA	Trigeminal artery
ThyrA	Thyroid artery
TympN	Tympanic nerve
ThyrCervTr	Thyro-cervical trunk
VA	Vertebral artery
VidA	Vidian artery
VOA	Ventral ophthalmic artery
VPA	Ventral pharyngeal artery

Introduction

In this article, after some definitions and a historical overview, we will describe the general principles of the vascular embryology of the whole cranio-facial arterial system in

human. Each paragraph describes one of the seven stages of Padget [27, 28], to make the reading easier. For each stage, general developmental changes, evolution of the anterior circulation and, in the end, the evolution of the posterior and extracranial circulation will be successively addressed. Each stage is summarized by a picture with all the main vessels showing their relationship with each other and with the developing neural and somatic structures.

Terminology

- Days: the embryo implants in the uterus to start its intrauterine life around 1 week after fertilization. Normally, the embryonic life is divided in weeks: the gestational age (or clinical age) is calculated from the last menstrual period; the post-conception age, on the other hand, refers to days after fertilization. In our work, we will refer to “days” as days after fertilization.
- Stages: with the word “stages” we will only refer to the 7 stages in which Padget arbitrarily divided the arterial system development [27, 28]. They do not correspond to the “Carnegie stages”, which are a standardized system of 23 stages used to provide a unified developmental chronology of the vertebrate embryo (proposed by Streeter in 1942 [35–39] and revised by O’Rahilly and Müller in 1987 [24]). These stages are not based on the size or the number of days of development, but on the developmental changes that occur during the first period of intrauterine life. For the sake of completeness, we specified the corresponding Carnegie stage(s) to the Padget stage in each paragraph.
- Millimeters: the size of the embryos during the various phases is expressed in millimeters of length from the rostral to the caudal point.

Note: in her work, Padget refers to the two main primitive components of the ophthalmic artery as “ventral” and “dorsal”, where ventral is anterior and dorsal posterior [27]. However, if we analyze the true disposition of the vessels, that might be confusing. In fact, the so-called “primitive dorsal ophthalmic artery” comes off more proximally from the primitive internal carotid artery (and, consequently, in a ventral position with respect of the developing head); the so-called “primitive ventral ophthalmic artery” comes off more distally (and so in a dorsal position). In our work, we will maintain the original terminology from Padget, specifying the correct position of the arterial branches when necessary.

History

Historically, five great authors are known for their thorough studies concerning the cerebral arteries development.

Three of them based their results on the embryos collection of the Carnegie University.

G.L. Streeter in 1921 described the principles leading to cerebral vascular system formation, dividing it in 5 phases: (1) angioblastic stage, (2) arterial, venous and capillary development, (3) penetration of perforators, (4) the construction of more large vessels from a “web” and (5) the histological differentiation [34].

E.D. Congdon in 1922 defined the complete embryology of the aortic arches [5].

D.H. Padget continued the descriptive work of Streeter working on a series of embryos at the Carnegie University, publishing in 1948 a deep and complete study about the embryology of the whole cerebral arterial system starting from the appearance of the internal carotid artery (about 3.5 weeks, 3 mm) to the final configuration (about 7 weeks, 40 mm) [17, 27].

F. Altmann, an Austrian ENT emigrated to the USA in the late 30s, gave his contribution to the field with several works on arterial variants and comparative anatomy [1], and P. Lasjaunias from France is one of the most influential and important names in the field of neurovascular anatomy of the past century, with his immense work published as articles and books on cerebrovascular anatomy, embryology and comparative anatomy [4, 18, 19]. He started from the rigorous study of his large number of angiographies, comparing them to draw up several embryological hypotheses to explain physiological development, anatomical variants and pathological entities.

Embryological stages described by Padget in 1948 [27] are considered as a reference and we chose to follow them to present the key embryological steps of cranio-facial arterial development. With the aim to well understand the embryological development, in the first part of this article, we will describe the development of the embryo’s cranial extremity arteries before the first stage of Padget (1.5–2 mm stage, \approx 21 days).

Development of the cranio-facial arterial system

The cerebral vasculature begins to develop quite early in the embryo, during the third week of intrauterine life (21 days \approx 2 mm), slightly before the heart starts beating [23, 29]. At this stage, the neural tube is not closed yet. The prosencephalon is irrigated initially by the two dorsal aortas (DA), whose rostral part will become the internal carotid arteries (ICA); the mesencephalon and rhombencephalon vasculature develop after, as the vertebro-basilar system appears later [1, 20, 27].

The vascular development consists of 2 main stages: vasculogenesis and angiogenesis [21, 23]. Vasculogenesis is the process by which hemangioblasts are differentiated into angioblasts and the formation of a primitive vascular

network; angiogenesis refers to the formation of new capillary vessels from pre-existing blood vessels [23, 29, 41]. The main mechanism of angiogenesis is sprouting, which is mainly driven by hypoxia/ischemia mechanism and related growth factors from the target tissue [3, 23, 29, 31]. As more capillaries are formed, the impedance to flow is reduced in larger arteries; this way, flow-induced remodeling of the vessels supplying a specific parenchymal area is promoted [7, 23].

The development of the circulatory system supplying blood to the brain begins with the formation of the 6 pairs of primitive branchial arch arteries, subsequently undergoing heavy modifications during development [1, 23].

The arterial arch and proximal arterial branch development

The human embryo has six pair of visceral arterial arches (AA) [1, 5, 14, 23, 25, 27, 33]. Each AA arises ventrally from the bulbus arteriosus (aortic sac) and courses in the corresponding visceral branch, to end dorsally in the DA [1, 5, 23, 27, 33]. They are present until about the 13 mm stage; the development starts from front to back, but they are never all present at the same time [1, 14, 27, 33]. For example, the first AA regresses during the completion of the fourth, and the second disappears before the sixth is completely closed [5, 27] (Figs. 1, 2, 3).

Controversies exist about the existence of a fifth arterial arch: only the first four pharyngeal arches, grooves and pouches are distinct structures. Nevertheless, arch arteries develop caudal to the fourth arch. The pulmonary arch caudal to the fourth arch artery is named a “sixth arch artery” because of its phylogeny, even when a fifth arch artery is not present [5]. Some recent works have tried to explain several anomalies, such as double-barrel aorta, with the presence of a persistent fifth arch artery; despite in the most cases other mechanisms seem to explain these anomalies, in rare cases “true” fifth arterial arches have been described [2, 12, 13].

In embryos longer than 13 mm, the portion of DA between the third and fourth AA disappears on both sides of the embryo [1, 27]. The same does the segment between the fourth AA and the junction with left DA, but only on the right side [1, 27]. This way, the left horn of the aortic sac and the fourth AA form definitive aortic arch (AoArch), and the right horn of the aortic sac becomes the arteria anonyma (future brachio-cephalic trunk). The third AA will become the ICA [1, 23, 27]. Its main trunk is formed by the segment of the DA between the first and third AA. The external carotid arteries (ECA) develops later from the ventral pharyngeal arteries [1, 20, 23, 27] (Figs. 4, 5).

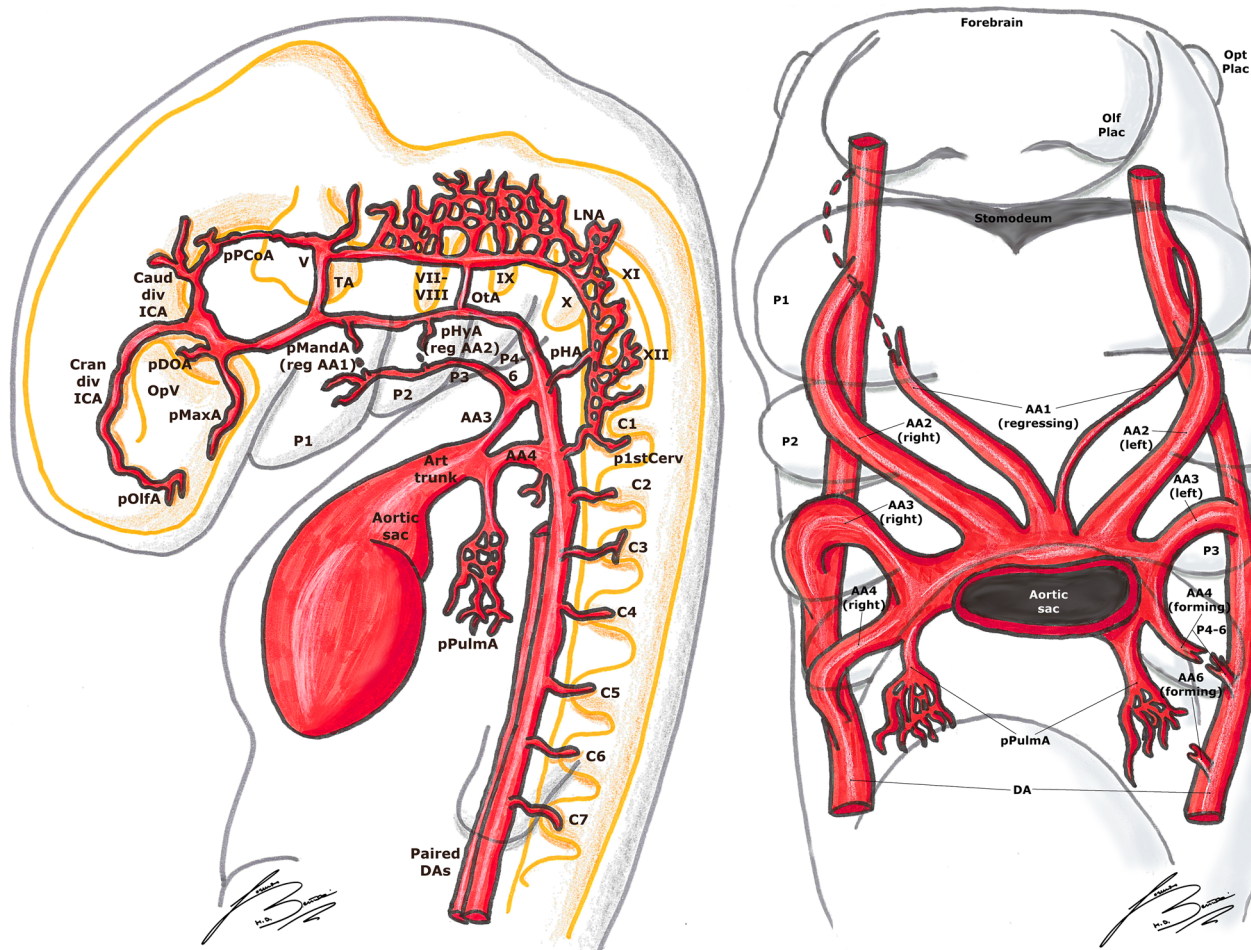


Fig. 1 Padget stage 1; lateral (left) and frontal (right) view of a 4–5 mm, \approx 30-day-old embryo. In gray, the outer structure of the embryo is outlined; in yellow, the developing nervous system is represented.

Developing cranial nerves are numbered from V to XII, developing spinal roots are listed from C1 to C7 and pharyngeal arches from P1 to P4-6.

The development of the cranio-facial arteries (stage-by-stage development)

“Pre-Padget” stage (\approx 21 to \approx 28 days, from 1.5–2 to 4 mm); Carnegie stages 10–12

At the beginning of the “pre-Padget” stage, after about 21 days of intrauterine life, both the ventral aortas (from the aortic bulb) and DAs are connected by the first AA [1, 20, 27]. In the next days, the second AA develops and the first two AAs are thus well visible [5, 27]. The two DAs course along the whole embryo, giving segmental branches to each somite [5, 27]. The primitive heart starts beating after about 23 days [5, 20, 27].

At about 4 mm length, \approx 28 days of intrauterine life, the two ventral aortas (or the two horns of the aortic bulb) are still present; the DAs are beginning to fuse, starting from their caudal end in a “zipper-like” fashion to form the definitive aorta [20, 27]. The first four AAs are visible; the first

one is beginning to disappear while the fourth is being completed [1, 27].

4–5 mm stage (\approx 30 days), Padget stage 1; Carnegie stage 13

At this stage, the optic vesicle (OpV, whose formation began around the 18th day) is well visible. The first AA is completely regressed, and the regression of the second has begun; they will become the mandibular (MandA) and hyoid arteries (HyA), respectively [14, 20, 25–27, 33] (Fig. 1).

As mentioned before, the primitive ICA is beginning its development from the DA located between the first three AAs and from the third AA itself [14, 20, 23, 25, 27]. At the level of the trigeminal ganglion, there is a first division into two branches: (1) the primitive trigeminal artery (TA), which extends dorsally to join the longitudinal neural artery (LNA) on the hindbrain wall; (2) the continuation of the carotid, extending cranially and medially towards Rathke’s

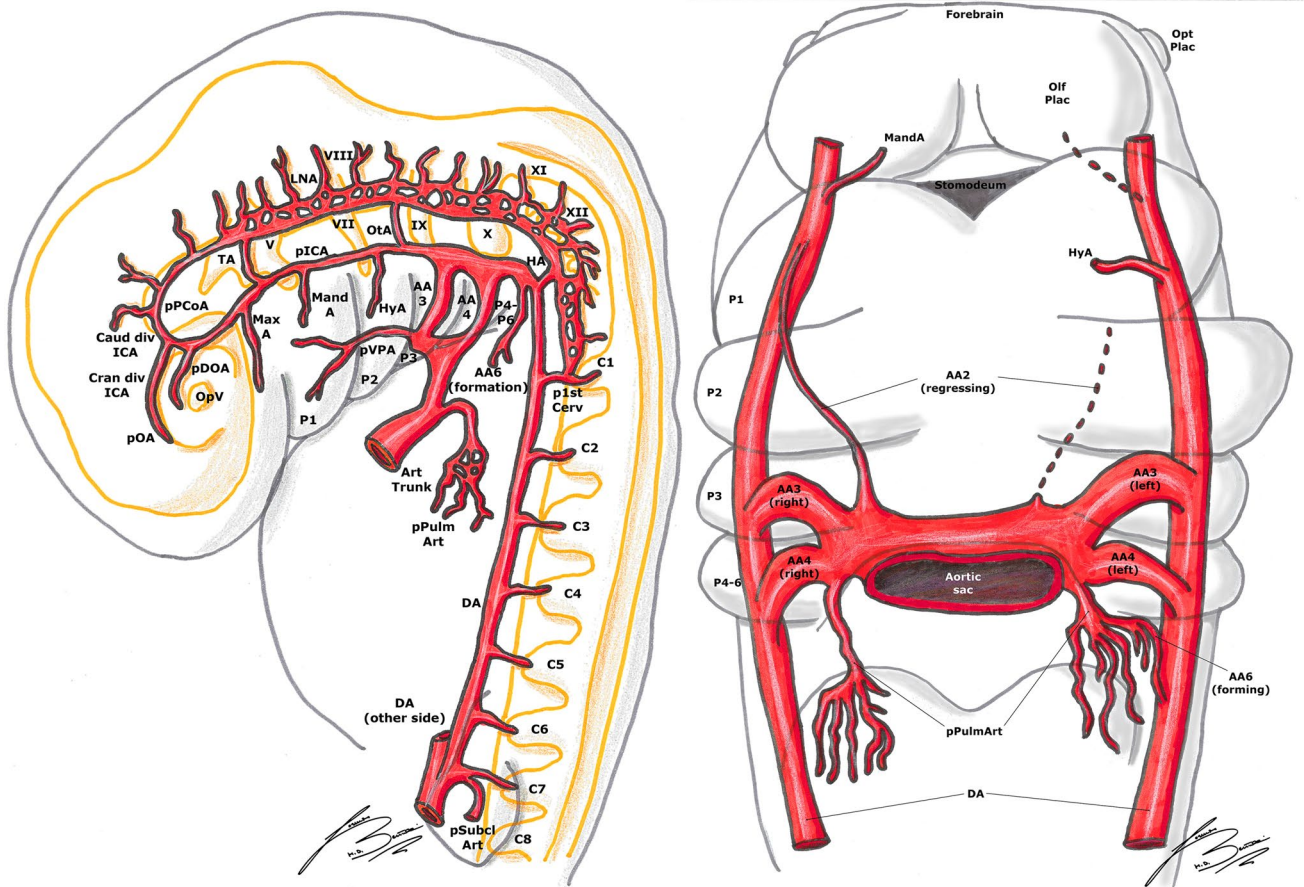


Fig. 2 Padgett stage 2; lateral (left) and frontal (right) view of a 5–6 mm, \approx 31-day-old embryo. In gray, the outer structure of the embryo is outlined; in yellow, the developing nervous system is represented. In gray, the outer structure of the embryo is outlined; in yellow,

the developing nervous system is represented. Developing cranial nerves are numbered from V to XII, developing spinal roots are listed from C1 to C8 and pharyngeal arches from P1 to P4-6.

pouch [14, 20, 23, 25, 27, 30, 33, 40]. This branch joins its counterpart on the opposite side, to which is connected by a plexus [20, 27, 30]. The primitive maxillary artery (MaxA) is also developing at the base of Rathke's pouch, with a ventral course along the forebrain wall towards the OpV [11, 27]. Near to the most cranial part of the OpV, the ICA bifurcates in two branches: the caudal branch will become the posterior communicating artery (PCoA) and, in the future stages, the posterior cerebral artery (PCA); the cranial branch (future anterior cerebral artery, ACA) curves around the frontal part of the vesicle to terminate in the olfactory area [20, 23, 27, 30] (Figs. 1, 2).

The primitive ophthalmic artery (OA) appears like a small branch sprouting near the carotid division at the medial side of the optic vesicle, but the supply to the vesicle itself is highly plexiform in this stage and contributed by the carotid and the primitive MaxA [11, 20, 27, 30] (Figs. 1, 2).

In the posterior cerebral region (hindbrain), the two LNA appear, with a strip of non-vascular tissue in the midline [10, 14, 20, 23, 27, 30]. They are supplied cranially by the TA

and otic artery (OtA) and caudally by the hypoglossal artery (HA) and first cervical segmental artery (p1stCerv, also called proatlantal artery) [10, 14, 20, 23, 27, 30] (Figs. 1, 2).

5–6 mm stage (\approx 31 days), Padgett stage 2; Carnegie stage 14

The ICA, extending from the third AA, is now well delineated. The MandA (remnant of the first aortic arch) is now regressing [14, 20, 25–27, 33]. The HyA (remnant of the second aortic arch) is quite thick, and will become the stem of the stapelial artery (SA) in the future stages [14, 20, 25, 27, 33]. In the median part of the embryo, between the first two AAs, there is a big vessel, called the ventral pharyngeal artery (VPA). This vessel extends from the aortic bulb to a cranial and lateral direction towards the mandibular root of the fifth nerve [27]. Once the AAs regress, this branch becomes the primitive ECA [20, 23, 25–27, 33]. The primitive MaxA follows the lateral margin of Rathke's pouch to

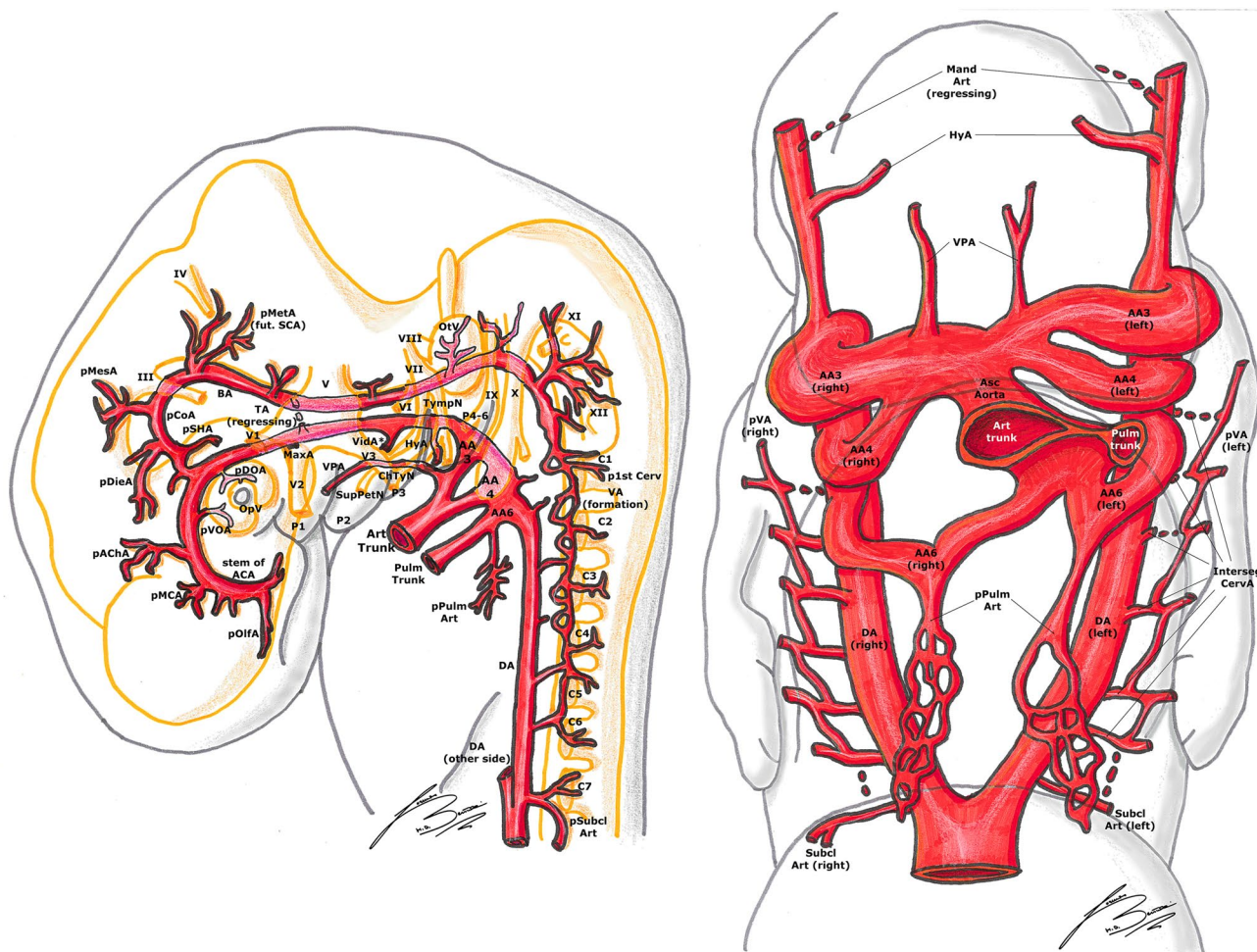


Fig. 3 Padgett stage 3; lateral (left) and frontal (right) view of a 7–12 mm, \approx 33-day-old embryo. In gray, the outer structure of the embryo is outlined; in yellow, the developing nervous system is represented. In gray, the outer structure of the embryo is outlined; in yellow, the developing nervous system is represented.

reach the ventromesial aspect of the tip of the prosencephalon, terminating in a plexus [11, 27] (Fig. 2).

Lateral to the origin of the primitive ventral OA (pVOA, the more distal branch), more proximal to the primitive carotid bifurcation, a longer branch develops passing over the dorso-caudal margin of the optic disc to the primitive lens. This is the so-called primitive dorsal OA (pDOA, the more proximal branch) [11, 20, 27, 32]. Consequently, at this stage, the optic supply is dual (pVOA plus pDOA) [11, 27, 32] (Fig. 2).

The caudal division of the ICA has formed a second anastomosis with the cranial end of the LNA at the mesencephalon, forming the definitive PCoA [14, 20, 23, 25, 27, 30] (Fig. 2).

Consequently, the TA begins to involute, being replaced by the PCoA, and the two LNAs begin to fuse to form the primitive basilar artery (BA). The hypoglossal arteries (HA) also begin their regression; this is because the most part of

low, the developing nervous system is represented. Developing cranial nerves are numbered from III to XII, developing spinal roots are listed from C1 to C7 and pharyngeal arches from P1 to P4-6.

the blood supply to the caudal LNAs and BA comes from the first cervical segmental branches. A temporary vessel supplied cranially by the lateral branch of the BA (i.e., TA) and caudally by the first cervical segment artery often becomes an accessory anastomosis between BA and vertebral arteries (VAs) [10, 14, 20, 25, 27] (Fig. 2).

7–12 mm stage (\approx 33 days), Padgett stage 3; Carnegie stages 15–16

The ICA is quite large in the cerebral part, while is thinner at the level of the third aortic arch. The HyA courses caudally, laterally and ventrally to reach the area between the seventh nerve root and the glossopharyngeal ganglion (between the second and third branchial arches). The MandA is now regressed almost completely. The VPA supplies the first two pharyngeal arches [20, 25–27] (Fig. 3).

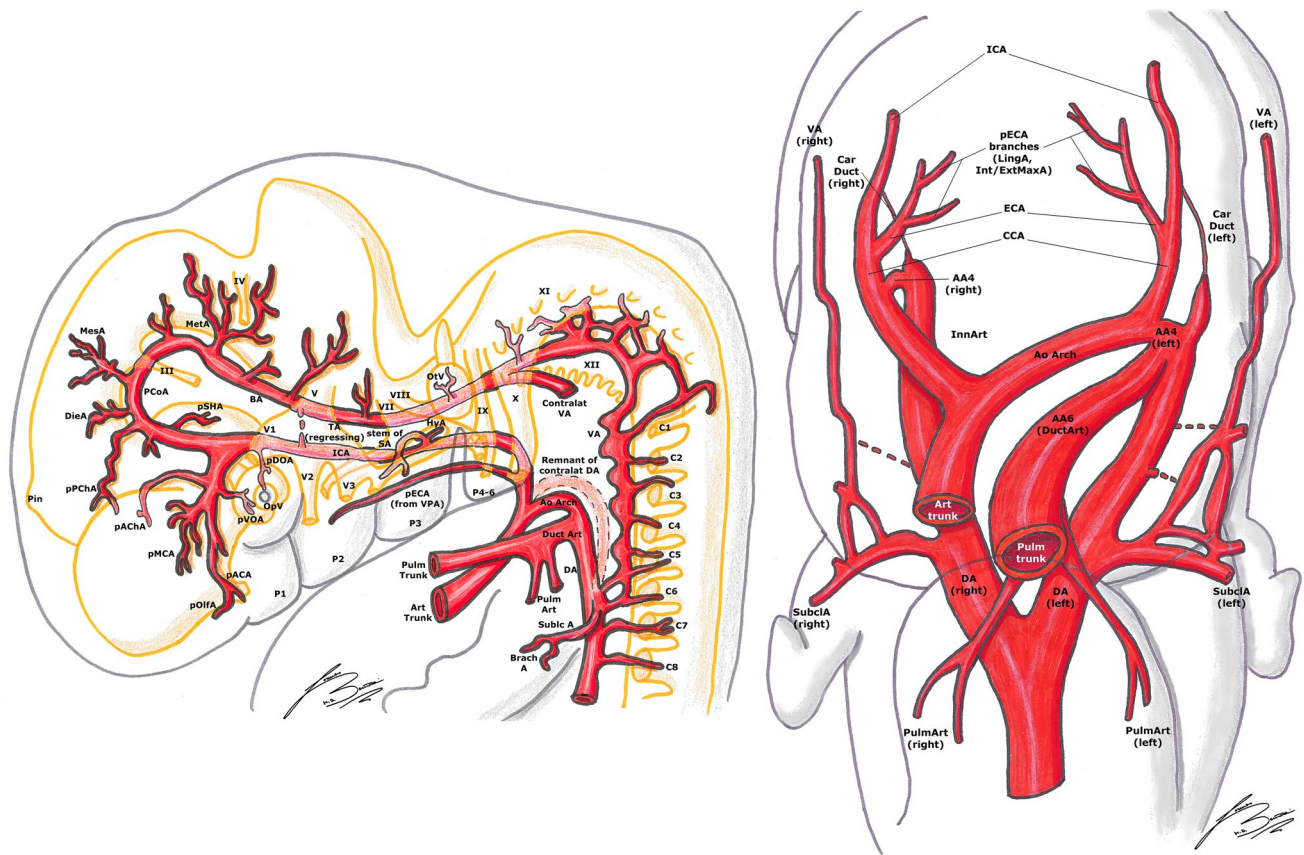


Fig. 4 Padgett stage 4; lateral (left) and frontal (right) view of a 12–14 mm, ≈36-day-old embryo. In gray, the outer structure of the embryo is outlined; in yellow, the developing nervous system is represented. In gray, the outer structure of the embryo is outlined; in yellow,

low, the developing nervous system is represented. Developing cranial nerves are numbered from III to XII, developing spinal roots are listed from C1 to C8 and pharyngeal arches from P1 to P4-6.

The pDOA is now fully developed, supplying a plexus to the OpV; the shorter pVOA is also well recognizable, rising near the junction between the ICA and PCoA [11, 20, 27, 32]. Several branches now appear from the cranial division of the ICA: the most important of these is the primitive anterior choroidal artery (AChA), coursing along the outlining choroid fissure in the diencephalon [20, 27, 30, 43]. Some small sprigs arise distally to this branch representing the stem of the MCA [20, 27]. More distally, just before the termination of the ICA at the olfactory sac, the primitive anterior cerebral artery (ACA) is beginning its development [14, 20, 25, 27, 30] (Fig. 3).

From the caudal end of the primitive PCoA, two branches emerge right next to the third nerve: one supplies the diencephalon (diencephalic artery, DieA) and gives a posterior choroidal branch (PChA) which is directed towards the AChA, while the other one supplies the mesencephalon (mesencephalic artery, MesA) [20, 27] (Figs. 3, 4).

The PChA from the PCoA anastomoses with the AChA and the choroidal branches of the ACA in the choroidal plexus at level of the interventricular foramen. Later on,

the ACA pericallosal branches to the choroidal plexus elongate and regress. This AChA–PChA anastomosis is named “limbic arterial arch” and in some cases may persist in the adult life [9, 27, 43] (Figs. 3, 4, 5, 6).

At this stage, the VA begins its formation by a transverse anastomosis between the six upper cervical segmental arteries; meanwhile, the aortic end of each cervical segmental branch is progressively occluding and each segmental branch regresses [14, 20, 23, 25, 27, 30]. It is notable that each transverse anastomosis courses from the more proximal end of one segmental branch to the more distal end of the next branch (in a cranial direction) (Figs. 3, 4).

From the cranial end of the BA, which is still quite irregular in shape and formed by some “islands”, rises the metencephalic artery (MetA) or primitive superior cerebellar artery (SCA), supplying the region of the fourth nerve and metencephalon. Some symmetrical branches leaving from the BA supply the developing cranial nerves [20, 27] (Figs. 3, 4).

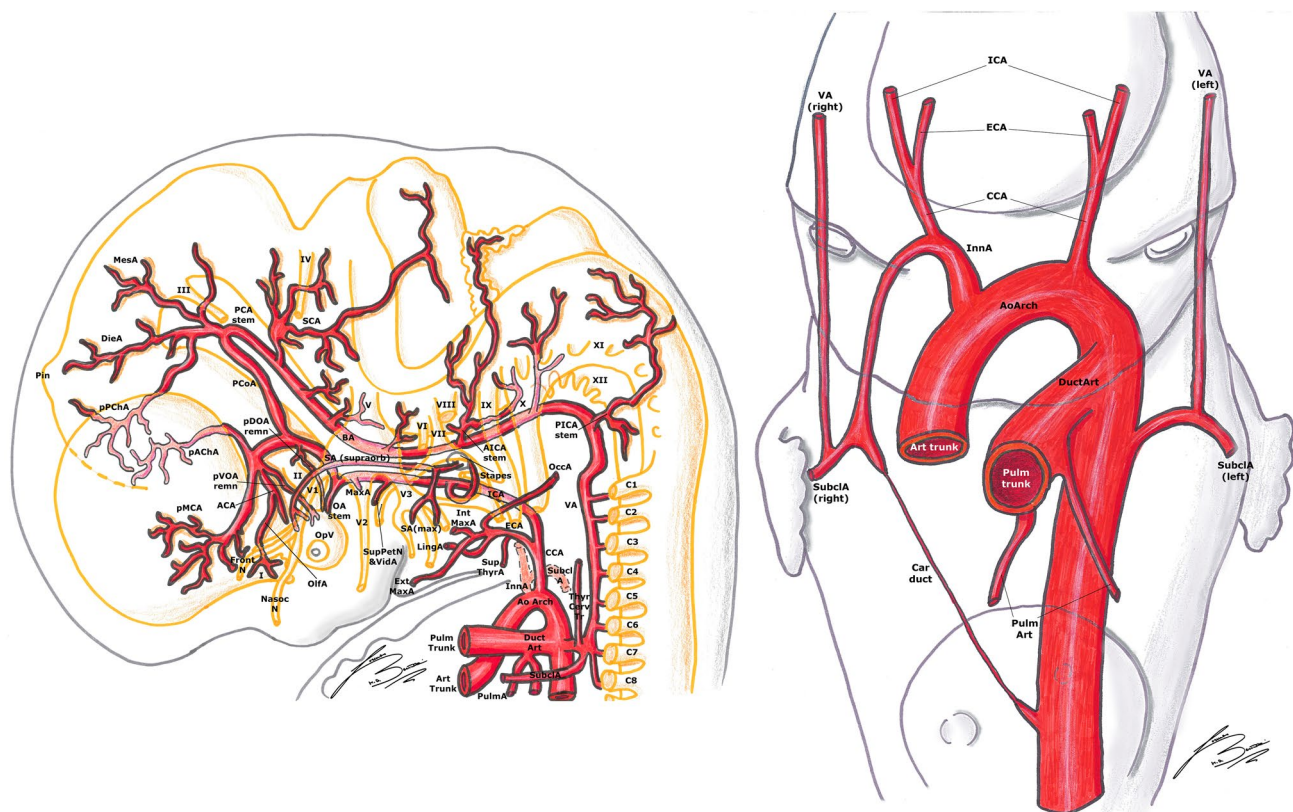


Fig. 5 Padgett stage 5; lateral (left) and frontal (right) view of a 16–18 mm, \approx 40-day-old embryo. In gray, the outer structure of the embryo is outlined; in yellow, the developing nervous system is represented. In gray, the outer structure of the embryo is outlined; in yellow, the

developing nervous system is represented. Developing cranial nerves are numbered from I to XII, developing spinal roots are listed from C1 to C8. Pharyngeal arches are becoming the respective fetal derivatives.

12–14 mm stage (\approx 36 days), Padgett stage 4; Carnegie stage 17

This stage is important from a developmental point of view for the higher vertebrates. The definitive conformation of the cranial division of the ICA is well identifiable. The first collateral of this cranial division is the AChA [20, 27, 30, 43]. The second one is the primitive MCA, and the next and more distal branch is the stem of the ACA, at the terminal end of the cranial ICA division (the primitive olfactory artery, pOlfA) [11, 20, 25, 27]. This artery divides into a branch to the nasal fossa, and another and more medial one to the emerging olfactory nerve root; this second branch is the future definitive ACA, and in some embryos is joined with its contralateral homolog by plexiform anastomoses in the midline, the “sketch” of the anterior communicating artery (ACoA) [11, 14, 20, 25, 27, 30]. It is notable that, in this phase, the terminal branch of the ICA appears to be the ACA, whereas in the adult configuration, the MCA is the most important branch of this artery and the ACA seems to be a “collateral” (Figs. 3, 4).

The pDOA is now longer and gives two branches: the common temporal ciliary artery (ComTempCilA, Fig. 6), to the caudo-dorsal aspect of the optic cup, and the hyaloid artery (HyalA, future central retinal artery), which enters the ocular cleft. The pVOA is also elongated and its distal part will form the common nasal ciliary artery (ComNasCilA, Fig. 6). The definitive stem of the OA has not yet begun its development [11, 20, 27, 32].

This stage is characterized by the formation of the SA. The formation of this branch starts from the HyA, which gives a collateral branch passing through the primitive stapes, between the first pharyngeal pouch to the seventh nerve, to descend in the mandibular substance [20, 27, 33] (Fig. 4).

The thyroid (ThyrA) and lingual (LingA) arteries, branches of the ECA, arise from the VPA and begin their development in most of the embryos at this stage (Fig. 5). The obliteration of the two ventral aortas between the third and fourth AA is almost complete, giving rise to the common carotid artery (CCA) [20, 26, 27] (Figs. 4, 5).

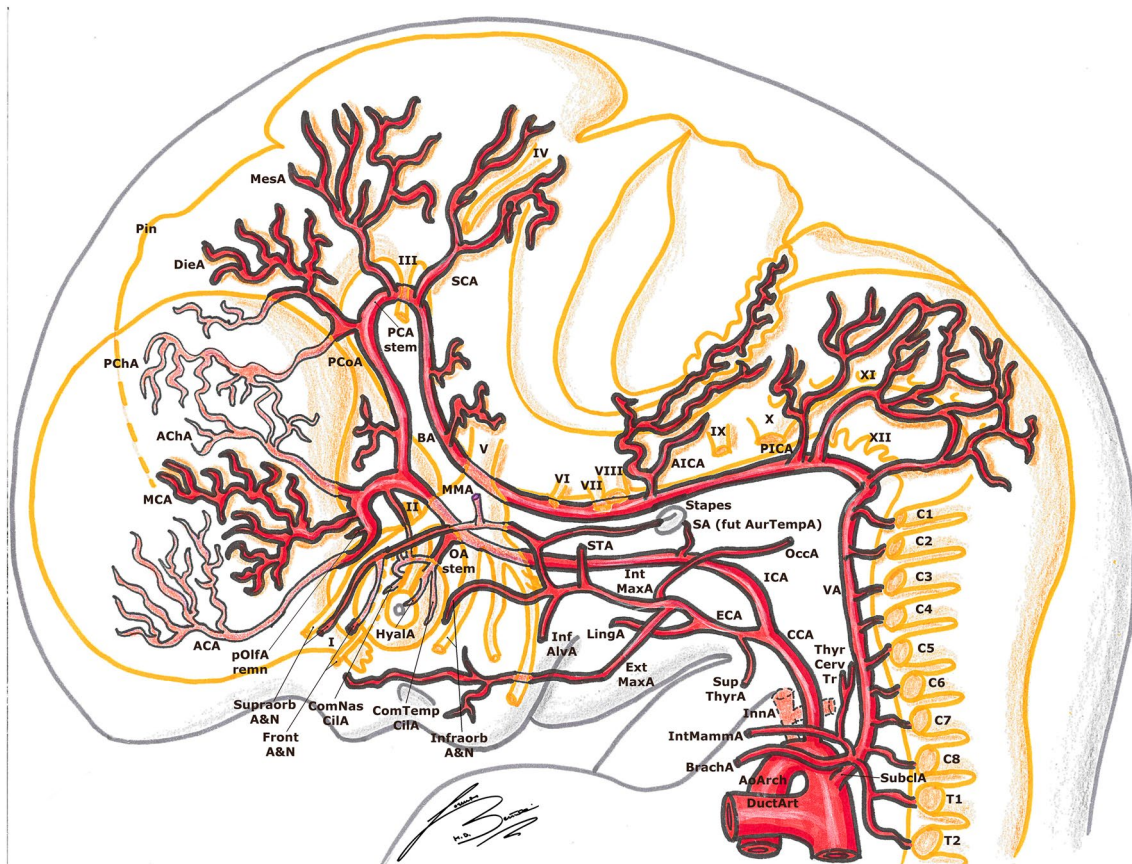


Fig. 6 Padgett stage 6; lateral view of a 20–24 mm, \approx 45-day-old embryo. In gray, the outer structure of the embryo is outlined; in yellow, the developing nervous system is represented. In gray, the outer structure of the embryo is outlined; in yellow, the developing nervous

system is represented. Developing cranial nerves are numbered from I to XII, developing spinal roots are listed from C1 to T2. The arterial “ring” or loop around the optic nerve is now visible.

16–18 mm stage (\approx 40 days), Padgett stage 5; Carnegie stages 18–19

At this stage, we can see the supngoing clarification of the adult vascular configuration. The descent of the heart and the large proximal arterial trunks into the thorax is now almost completed (Figs. 5, 6).

The CCA is nearly fully elongated, the VA is more regular and straightened and its origin from the subclavian artery (SubclA), shifting cranially and opposite to the pulmonary arch (the sixth AA), is defined (Fig. 5).

The pOlfA (the lateral terminal part of the anterior division of the ICA, as seen in the previous stage) is quite large and gives off a branch for the olfactory nerve, but now its medial counterpart, the stem of the definitive ACA, is clearly bigger [27] (Figs. 5, 6).

The MCA is now a quite big trunk with branches spreading out to the growing hemisphere. The AChA and PChA terminate in the choroidal fissure at the diencephalic roof [9, 27, 43] (Figs. 5, 6).

The permanent stem of the OA appears; although the exact formation of this artery is still debated and controversial, we here report the most accepted hypothesis. The SA is now entirely developed, giving two mayor branches. The first one is the maxillo-mandibular branch (ventral), from which the MandA and MaxA (or infraorbital) arteries arise. The second one is the supraorbital branch (dorsal), which passes lateral to the trigeminal ganglion to reach the primitive orbit. Here, this branch anastomoses with branches of the pDOA (ComTempCilA and HyalA) and of the pVOA (ComNasCilA). Therefore, the definitive OA consists of two different parts of the ICA: (1) the supraorbital branch of the SA, which gives the orbital arteries and (2) pDOA and pVOA, which give the ocular branches. As these anastomoses form, the original stem of the pDOA regresses (becoming part of the inferolateral trunk) and the artery itself makes a sort of caudal “migration” along the ICA. As a result, the definitive stem of the OA develops in its final position [11, 20, 27, 32, 33] (Figs. 5, 6).

It is usually found a dorsal remnant of the MandA which runs along the future greater petrosal nerve in the pterygoid (or Vidian) canal, to reach the pterygopalatine fossa: these are the adult Vidian artery (VidA) and nerve. There usually is also a primitive maxillary branch, directed medially and cranially towards the caudal border of the hypophysis, which contributes to the inferior hypophyseal artery [20, 25–27] (Figs. 5, 6).

Together with the appearance of the definitive CCA, several ECA branches begin their development: the thyroid (ThyrA), lingual (LingA), occipital (OccA) and external maxillary (ExtMaxA) arteries appear. The internal maxillary artery (IntMaxA) anastomoses with the mandibulo-maxillary branch of the SA [11, 20, 26, 27, 33] (Figs. 5, 6).

The diencephalon is supplied by two large branches: the more anteroventral is the PChA, the other one is the DieA, which courses towards the primitive pineal region. The mesencephalon is also supplied by two branches (MesA and lateral branch of PChA) [27] (Figs. 4–6).

In this stage, the PCA starts to develop as the caudal segment of the PCoA, and can be considered a branch of the PCoA such as the PChA or the hindbrain arteries. During the development of the cerebral hemispheres, the PCA progressively enlarges and the other smaller arteries become PCA branches, as we can see in the adult configuration [14, 20, 25, 27, 30] (Fig. 5).

The BA branches also develop as the mesencephalon and the fourth ventricle region differentiate. The SCA divides in a mesial branch coursing caudal to the future fourth nerve and a lateral one continuing over the cerebellar lip. The stem of the future antero-inferior cerebellar artery (AICA) arises at the level of the eighth nerve, ending at the choroid plexus of the fourth ventricle. More caudally, many small branches emerging from the VA with many anastomoses pass through the rootlets of the vagus and accessory nerves. One bigger branch of the VA runs cranially to the choroid plexus along the medulla, constituting the stem of the future postero-inferior cerebellar artery (PICA) [20, 27, 30] (Figs. 5, 6).

20–24 mm stage (\approx 45 days), Padgett stage 6; Carnegie stages 20–21

In this stage, as the head begins to lift away from the chest, acquiring more human features, and the cerebral hemispheres expand, the final configuration of the adult circle of Willis is almost perfectly recognizable.

The IntMaxA (a branch of the ECA, as mentioned before) now anastomoses with the lower division of the SA (maxillo-mandibular branch), going lateral to V3 nerve. When the ventral (infraorbital) division of the SA becomes surrounded by the auriculotemporal nerve, the part remaining over the anastomosis with the IntMaxA becomes the stem of the middle meningeal artery (MMA). The dorsal

(supraorbital) division of the SA, laterally to the trigeminal ganglion, constitutes the extension of the MMA. At this point, the proximal segment of the SA (medial to the stapes) begins its regression: thus, the maxillo-mandibular branch of the SA (and so the MMA too) becomes an ECA branch [11, 20, 27, 32, 33] (Fig. 6).

At the level of the OA, the primitive ComTempCilA and HyalA anastomose with the ComNasCilA of the primitive ventral OA to constitute a sort of “arterial loop” around the optic nerve. This loop is also connected with the supraorbital branches of the SA (which has become the MMA, as seen above). As a result, the OA gains a more dorsal position to the optic nerve and gets its orbital branches (that come from the SA) [11, 20, 27, 32, 33] (Fig. 6).

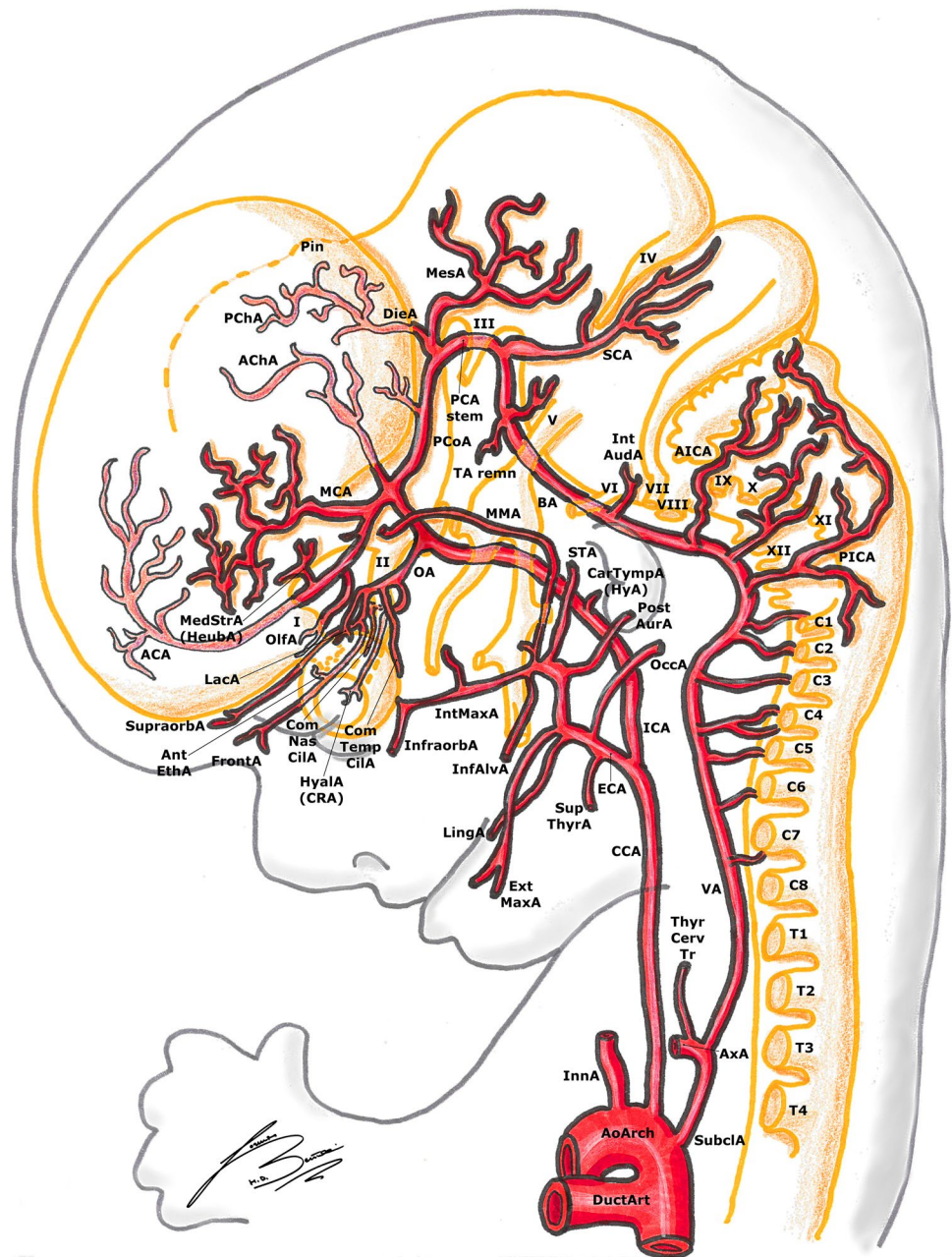
The two ACAs approximate and course upwards between the two expanding cerebral hemispheres. In some embryos, a small branch to the choroid plexus can be found, before the development of the corpus callosum [25, 27]. The persistence of such branch in the human adult is extremely rare, as it regresses while the corpus callosum develops and the artery moves more cranially and dorsally [14, 25, 27]. The ACoA is much less plexiform and almost completed, with a branch to the commissural plate; the course of this branch is more caudal than ACAs, and it can become an unpaired or accessory ACA in the adult [23, 27]. The pOlfA is now a small branch which follows the olfactory nerve in the nasal cavity; a larger branch, arising from the primitive stem of the olfactory artery, has a more lateral course to supply the forming basal ganglia, called the medial striate branch. This is the so-called “recurrent artery” (or Heubner’s artery). This artery is formed by components of the anastomosis between the primitive olfactory artery and its “collateral” ACA branch; it leaves the ACA at the level of the ACoA (or slightly more distally), extends towards the anterior perforated substance and enters it to supply the anteroinferior part of the striatum and internal capsule [11, 20, 22, 27, 42] (Fig. 7).

The PCoA (which initially was a direct continuation of the ICA to the BA) now moves cranially and posteriorly becoming a true “collateral” leaving the ICA with a 90° angle.

The AChA and PChA are connected by several anastomoses at the level of the diencephalon and choroid plexus, as explained before [9, 20, 27, 43]. With the progressive enlargement of the basal ganglia, the contribution of the AChA for the plexus becomes smaller, as this artery’s main supply remain the pallidus, the posterior limb of the internal capsule, the optic tract, the caudate tail and the amygdala, with some cortical branches to the uncinate gyrus (Figs. 6, 7).

The stems of both AICA and PICA are still difficult to recognize among many arterial branches supplying the posterior part of the hindbrain, which still have a quite plexiform

Fig. 7 Padgett stage 7; lateral view of a 40 mm, \approx 50-day-old embryo. In gray, the outer structure of the embryo is outlined; in yellow, the developing nervous system is represented. In gray, the outer structure of the embryo is outlined; in yellow, the developing nervous system is represented. Developing cranial nerves are numbered from I to XII, developing spinal roots are listed from C1 to T4. The definitive pre-term vessel configuration is almost completed.



configuration. This is because the cerebellar hemispheres have not developed yet. The great number of variants in the vertebro-basilar circulation is explained by the late formation of the cerebellar hemispheres, which leads to this highly plexiform arterial configuration with persistence of remnants of the vertebro-basilar anastomoses described from stage 2 [14, 20, 23, 25, 27, 30].

40 mm stage (\approx 50 days), Padgett stage 7; Carnegie stages 22–23

In this stage, in almost all the embryos, the adult stem of nearly all the main arterial branches can be identified. The

circle of Willis is now fully recognizable also from the basal view, thanks to the definitive position of the PCoA. As mentioned before, the length, size and direction of the posterior branches (PCA, AICA, PICA) are determined by the development of the cerebellum [27, 30].

As seen before, we can find an accessory branch of the ACA close to the midline (the former “median artery of the corpus callosum”) [23, 27].

In this phase, the OA takes the blood supply of the orbit as the SA stem has disappeared during the previous stage. The lacrimal artery (LacA) is the last appearing orbital branch of the OA, originating from the orbital segment of the supraorbital division of the SA. The extraorbital part

of the supraorbital SA division becomes a collateral of the anterior branch of the MMA (which is now an ECA branch, as seen before). In the adult, this is a site of frequent anastomoses between ICA (LacA) and ECA (anterior branch of the MMA). In the latter stage, the HyalA becomes the central artery of the retina and takes charge of the blood supply to the deep ocular structures [11, 20, 27, 32, 33] (Fig. 7).

The PCoA is quite large in this stage, and in this phase, the adult configuration known as “fetal PCoA” can take shape: the PCoA can remain bigger (as the original caudal end of the posterior division of the ICA) and give off the homolateral PCA, with a very small branch connecting the divisional branch of the basilar (the first segment of the PCA in the normal configuration) [20, 23, 25, 27].

Beginning of the fetal stage

At 7–8 weeks of gestational age, the embryological phase is over and we begin to speak about “fetus” [8, 24].

The cerebrum is now a “privileged” organ, being composed by an almost complete arterial system and receiving a more oxygenated blood compared to the other organs.

In fact, well-oxygenated blood coming from the placenta passes from the umbilical vein through the *ductus venosus* (or left half of the liver), bypassing the inferior vena cava to reach directly the left atrium and ventricle through the foramen ovale, and then goes up the ascending aorta to the ICAs. Deoxygenated blood from the superior and inferior vena cava, forming the so-called “via dextra” through the right atrium and ventricle, passes in the pulmonary trunk and *ductus arteriosus* (DuctArt), to mix with the rest of the oxygenated blood coming from the ascending aorta, to supply the other organs and limbs [6, 15, 16, 27].

Conclusion

In this paper, we tried to sum up the main stages and concepts of the embryological development of the blood supply to the brain, to have a better understanding of the normal anatomy and, doing so, make it easier to recognize and understand some of the most important anatomical variants or pathologies.

Author contributions LB, TR: protocol/project development, LB: data collection or management, LB: data analysis, LB: manuscript writing, TR, LB: manuscript editing, LB: drawings, TR: revision.

Funding Open Access funding provided by Università della Svizzera italiana. No funding was received for this study.

Compliance with ethical standards

Conflict of interest The authors declare that they have no conflict of interest.

Ethical approval All the procedures performed in the studies involving human participants were in accordance with the ethical standards of the institutional and/or national research committee and with the 1964 Helsinki Declaration and its later amendments or comparable ethical standards.

Informed consent Informed consent was obtained from all individual participants included in the study.

Open Access This article is licensed under a Creative Commons Attribution 4.0 International License, which permits use, sharing, adaptation, distribution and reproduction in any medium or format, as long as you give appropriate credit to the original author(s) and the source, provide a link to the Creative Commons licence, and indicate if changes were made. The images or other third party material in this article are included in the article's Creative Commons licence, unless indicated otherwise in a credit line to the material. If material is not included in the article's Creative Commons licence and your intended use is not permitted by statutory regulation or exceeds the permitted use, you will need to obtain permission directly from the copyright holder. To view a copy of this licence, visit <http://creativecommons.org/licenses/by/4.0/>.

References

1. F. Altmann (1947) Anomalies of the internal carotid artery and its branches; their embryological and comparative anatomical significance; report of a new case of persistent stapedia artery in man. *Laryngoscope*, 57(5) 313–339. Retrieved from <https://www.ncbi.nlm.nih.gov/pubmed/20241850>
2. Bamforth SD, Chaudhry B, Bennett M, Wilson R, Mohun TJ, Van Mierop LH, Anderson RH (2013) Clarification of the identity of the mammalian fifth pharyngeal arch artery. *Clin Anat* 26(2):173–182. <https://doi.org/10.1002/ca.22101>
3. Beck L Jr., D'Amore PA (1997) Vascular development: cellular and molecular regulation. *FASEB J*, 11(5) 365–373. Retrieved from <https://www.ncbi.nlm.nih.gov/pubmed/9141503>
4. Berenstein A, Brugge KGt (2006) Surgical neuroangiography: clinical and interventional aspects in children. Springer-Verlag, Berlin
5. Congdon ED (1922) Transformation of the branchial-arch system during the development of the human embryo. *Contrib Embryol* 68:47–110
6. Degani S (2008) Fetal cerebrovascular circulation: a review of prenatal ultrasound assessment. *Gynecol Obstet Invest* 66(3):184–196. <https://doi.org/10.1159/000143157>
7. Faraci FM, Heistad DD (1990) Regulation of large cerebral arteries and cerebral microvascular pressure. *Circ Res* 66(1):8–17. <https://doi.org/10.1161/01.res.66.1.8>
8. Findlay JK, Gear ML, Illingworth PJ, Junk SM, Kay G, Mackeras AH, Wilton L (2007) Human embryo: a biological definition. *Hum Reprod* 22(4):905–911. <https://doi.org/10.1093/humrep/del467>
9. Galatius-Jensen F, Ringberg V (1963) Anastomosis between the anterior choroidal artery and the posterior cerebral artery demonstrated by arteriography. *Radiology* 81:942–944. <https://doi.org/10.1148/81.6.942>

10. Gregg L, Gailloud P (2017) The role of the primitive lateral basilar vertebral anastomosis of Padget in variations of the verte-brobasilar arterial system. *Anat Rec* 300(11):2025–2038. <https://doi.org/10.1002/ar.23633>
11. Gregg L, San Millan D, Orru E, Tamargo RJ, Gailloud P (2016) Ventral and dorsal persistent primitive ophthalmic arteries. *OperNeurosurg* 12(2):141–152. <https://doi.org/10.1227/NEU.0000000000001066>
12. Gupta SK, Bamforth SD, Anderson RH (2015) How frequent is the fifth arch artery? *Cardiol Young* 25(4):628–646. <https://doi.org/10.1017/S1047951114002182>
13. Gupta SK, Gulati GS, Anderson RH (2016) Clarifying the anatomy of the fifth arch artery. *Ann PediatrCardiol* 9(1):62–67. <https://doi.org/10.4103/0974-2069.171392>
14. Kathuria S, Gregg L, Chen J, Gandhi D (2011) Normal cerebral arterial development and variations. *Semin Ultrasound CT MR* 32(3):242–251. <https://doi.org/10.1053/j.sult.2011.02.002>
15. Kiserud T (2005) Physiology of the fetal circulation. *Semin-Fetal Neonatal Med* 10(6):493–503. <https://doi.org/10.1016/j.siny.2005.08.007>
16. Kiserud T, Acharya G (2004) The fetal circulation. *PrenatDiagn* 24(13):1049–1059. <https://doi.org/10.1002/pd.1062>
17. Kretzer RM, Crosby RW, Rini DA, Tamargo RJ (2004) Dorcas Hager Padget: neuroembryologist and neurosurgical illustrator trained at Johns Hopkins. *J Neurosurg* 100(4):719–730. <https://doi.org/10.3171/jns.2004.100.4.0719>
18. Lasjaunias PL, Berenstein A, Brugge KGt (2001) Surgical neuroangiography vol. 1: clinical vascular anatomy and variations, 2nd edn. Springer, Berlin
19. Lasjaunias PL, Berenstein A, Brugge KGt (2004) Surgical neuroangiography: clinical and endovascular treatment aspects in adults. Springer-Verlag, Berlin
20. Lazorthes G (1966) *Vascularisation et circulation cérébrale*. Masson et Cie, Paris
21. Leblanc GG, Golanov E, Awad IA, Young WL, Biology of vascular malformations of the brain, NWC (2009) *Biology of vascular malformations of the brain*. *Stroke* 40(12):e694–702. <https://doi.org/10.1161/STROKEAHA.109.563692>
22. Maga P, Tomaszewski KA, Skrzat J, Tomaszewska IM, Iskra T, Pasternak A, Walocha JA (2013) Microanatomical study of the recurrent artery of Heubner. *Ann Anat* 195(4):342–350. <https://doi.org/10.1016/j.aanat.2013.03.011>
23. Menshawi K, Mohr JP, Gutierrez J (2015) A functional perspective on the embryology and anatomy of the cerebral blood supply. *J Stroke* 17(2):144–158. <https://doi.org/10.5853/jos.2015.17.2.144>
24. R O'Rahilly (1987) Developmental stages in human embryos. *Contrib Embryol Carnegie Inst Wash*. 637
25. Okahara M, Kiyosue H, Mori H, Tanoue S, Sainou M, Nagatomi H (2002) Anatomic variations of the cerebral arteries and their embryology: a pictorial review. *EurRadiol* 12(10):2548–2561. <https://doi.org/10.1007/s00330-001-1286-x>
26. Osborn AG (1980) The vidian artery: normal and pathologic anatomy. *Radiology* 136(2):373–378. <https://doi.org/10.1148/radiology.136.2.7403513>
27. Padget DH (1948) The development of cranial arteries in the human embryo. *ContribEmbryolCarnegInstn* 212:205–262
28. Padget DH (1956) The cranial venous system in man in reference to development, adult configuration, and relation to the arteries. *Am J Anat* 98(3):307–355. <https://doi.org/10.1002/aja.1000980302>
29. Plate KH (1999) Mechanisms of angiogenesis in the brain. *J NeuropatholExpNeurol* 58(4):313–320. <https://doi.org/10.1097/00005072-199904000-00001>
30. Raybaud C (2010) Normal and abnormal embryology and development of the intracranial vascular system. *NeurosurgClin N Am* 21(3):399–426. <https://doi.org/10.1016/j.nec.2010.03.011>
31. Risau W (1997) Mechanisms of angiogenesis. *Nature* 386(6626):671–674. <https://doi.org/10.1038/386671a0>
32. Roland J, Georges JL, Bracard S, Picard L (1984) Persistence of the perioptic ring of the ophthalmic artery. Anatomical and embryological observations. *Bull Assoc Anat (Nancy)*, 68(200) 65–70. Retrieved from <https://www.ncbi.nlm.nih.gov/pubmed/6518304>
33. Silbergleit R, Quint DJ, Mehta BA, Patel SC, Metes JJ, Noujaim SE (2000) The persistent stapedal artery. *AJNR Am J Neuroradiol*, 21(3) 572–577. Retrieved from <https://www.ncbi.nlm.nih.gov/pubmed/10730654>
34. Streeter GL (1921) The developmental alterations in the vascular system of the brain of the human embryo. *ContribEmbryol Carnegie Inst Wash* 8:7–38
35. Streeter GL (1942) Developmental horizons in human embryos. Description of age group XI 13 to 20 somites and age group XII 21 to 29 somites. *ContribEmbryol Carnegie Inst Wash* 541(30):211–245
36. Streeter GL (1945) Developmental horizons in human embryos. Description of age group XIII embryos about 4 or 5 millimeters long and age group XIV period of indentation of the lens vesicle. *ContribEmbryol Carnegie Inst Wash* 557(31):27–63
37. Streeter GL (1948) Developmental horizons in human embryos. Description of age groups XV XVI XVII and XVIII being the third issue of a survey of the Carnegie collection. *ContribEmbryol Carnegie Inst Wash* 575(32):133–203
38. Streeter GL (1951) Developmental horizons in human embryos. Description of age groups XIX, XX, XXI, XXII, and XXIII, being the fifth issue of a survey of the Carnegie collection (prepared for publication by Heuser CH and Corner GW). *ContribEmbryol Carnegie Inst Wash* 592(34):165–196
39. Streeter GL (1957) Developmental horizons in human embryos description or age groups XIX, XX, XXI, XXII, and XXIII, being the fifth issue of a survey of the carnegie collection. *ContribEmbryol Carnegie Inst Wash* 611(36):167–196
40. Tubbs RS, Verma K, Riech S, Mortazavi MM, Shoja MM, Loukas M, Cohen-Gadol AA (2011) Persistent fetal intracranial arteries: a comprehensive review of anatomical and clinical significance. *J Neurosurg* 114(4):1127–1134. <https://doi.org/10.3171/2010.11.JNS101527>
41. Vailhe B, Vittet D, Feige JJ (2001) In vitro models of vasculogenesis and angiogenesis. *Lab Invest* 81(4):439–452. <https://doi.org/10.1038/labinvest.3780252>
42. Vasovic L, Ugrenovic S, Jovanovic I (2009) Human fetal medial striate artery or artery of Heubner. *J NeurosurgPediatr* 3(4):296–301. <https://doi.org/10.3171/2008.12.PEDS08258>
43. Yu J, Xu N, Zhao Y, Yu J (2018) Clinical importance of the anterior choroidal artery: a review of the literature. *Int J Med Sci* 15(4):368–375. <https://doi.org/10.7150/ijms.22631>

Publisher's Note Springer Nature remains neutral with regard to jurisdictional claims in published maps and institutional affiliations.