



Colony fitness increases in the honey bee at queen mating frequencies higher than genetic diversity asymptote

Keith S. Delaplane¹ · J. Krispn Given² · John Menz³ · Deborah A. Delaney³

Received: 15 March 2021 / Revised: 29 July 2021 / Accepted: 3 August 2021 / Published online: 23 August 2021
© The Author(s) 2021

Abstract

Across the eusocial Hymenoptera, a queen's mating frequency is positively associated with her workers' genetic diversity and colony's fitness. Over 90% of a colony's diversity potential is achieved by its mother's tenth effective mating (m_e); however, many females mate at levels of $m_e > 10$, a zone we here call hyperpolyandry. We compared honey bee colony fitness at mating levels near and above this genetic diversity asymptote. We were interested in how hyperpolyandry affects colony phenotypes arising from both common tasks (brood care) and rare specialized tasks (parasite resistance). We used an unselected wild line of bees and a Varroa Sensitive Hygiene (VSH) line selected to resist the parasite *Varroa destructor*. Virgin queens were instrumentally inseminated to replicate the following queen/colony conditions: (1) VSH semen/low polyandry (observed mating number = $m_o = 9$), (2) VSH semen/high polyandry ($m_o = 54$), (3) wild type semen/low polyandry, or (4) wild semen/high polyandry. There was a positive effect of polyandry on brood survival, an outcome of common tasks, with highest values at $m_o = 54$. There was an interaction between polyandry and genetics such that differences between genetic lines expressed only at $m_o = 54$, with fewer mites in VSH colonies. These results are consistent with two hypotheses for the evolution of mating levels in excess of the genetic diversity asymptote: hyperpolyandry improves colony fitness by (1) optimizing genotype compositions for common tasks and (2) by capturing rare specialist allele combinations, resisting cliff-edge ecological catastrophes.

Significance statement

Polyandry is a female's practice of mating with several males, storing their sperm, and using it to produce one or more clutches of genetically diverse offspring. In the social Hymenoptera, polyandry increases the genetic diversity and task efficiency of workers, leading to improved colony fitness. Over 90% of the increase in a colony's diversity potential is achieved by its mother's tenth mating; however, many females practice hyperpolyandry, a term we reserve here for mating levels above this genetic diversity asymptote. We show that a token of colony fitness arising from common tasks, brood survival, improves universally as one moves from sub- to hyperpolyandrous mating levels. However, a colony phenotype arising from a rare parasite resistance task is only expressed in the presence of the controlling alleles and under conditions of hyperpolyandry. These results suggest adaptive mechanisms by which hyperpolyandry could evolve.

Keywords *Apis mellifera* · *Varroa destructor* · Varroa sensitive hygiene · Polyandry · Genome to phenome · Social evolution

Communicated by O. Rueppell

✉ Keith S. Delaplane
ksd@uga.edu

¹ Department of Entomology, University of Georgia, Athens, GA 30602, USA

² Department of Entomology, Purdue University, West Lafayette, IN 47907, USA

³ Department of Entomology & Wildlife Ecology, University of Delaware, Newark, DE 19716, USA

Introduction

Polyandry is the term applied to mating systems in which an individual female mates with more than one male (Pizzari and Wedell 2013). Once considered a rarity, polyandry is now recognized as a feature common across sexually reproducing organisms ranging from angiosperms (Pannell and Labouche 2013) to insects (Arnqvist and Nilsson 2000) and to primates (Muller and Thompson 2012). Early polyandry

research focused on its implications for sexual selection in individuals, with an emphasis on sperm competition (Parker 1970; Simmons 2002), cryptic female choice (Childress and Hartl 1972; Firman et al. 2017), and diploid male load (Page 1980). Today polyandry is appreciated as a dynamic in processes as fundamental as population extinctions, social networks, altruism and cooperation (Pizzari and Wedell 2013), and group formation and complexification across evolutionary transitions (Bourke 2011).

Polyandry played a central role in the evolution of complex sociality in insects. Evidence for this is suggested in the derived loss of the spermatheca in sterile castes with its simultaneous retention as a fully functional and capacious organ in the queens (Treanore et al. 2020). Thus equipped to store sperm from her multiple mates, nourish it and use it across her lifetime, a polyandrous queen is able to produce a colony of genetically diverse daughters, a condition often (Bourke 2011) though not necessarily (Linksvayer and Johnson 2019) associated with caste polymorphisms and increasing colony size and ecologic success.

Although a queen's promiscuity reduces average relatedness among nestmates, appearing to threaten the bases of eusocial cooperation (Ratnieks and Helanterä 2009), the increase in within-nest genetic diversity increases colony fitness, as shown from examples across the ants, wasps, and bees (Keller and Reeve 1994; Schmid-Hempel 1998; Hughes and Boomsma 2004; Goodisman et al. 2007; Seeley and Tarpay 2007). Polyandry is thus integral to the transition from simple to complex eusociality (Hughes et al. 2008; Bourke 2011) and by extension to social group formation once response to between-group selection exceeds response to within-group selection (West et al. 2007).

Among the mechanistic explanations for the evolution of polyandry is a group known as the genetic variance (GV) hypotheses (Keller and Reeve 1994). Each is a variant of the idea that within-colony genetic diversity improves colony fitness through better social integration, group task efficiency, and ecologic competitiveness (Gove et al. 2009). The GV hypotheses are reviewed and appraised by Crozier and Fjerdingstad (2001).

The GV hypotheses are consistent, but only up to a point, with computed rates of in-nest genetic diversity as a function of effective mating number (m_e = the queen's mating number adjusted for relative contribution of each of her mates to actual progeny (Starr 1985)). The relationship between m_e and a colony's genetic diversity is not linear, so that over 90% of the increase in a colony's diversity potential is achieved by its mother's 10th mating (Fig. 1) (Palmer and Oldroyd 2000). In other words, any hypothesis for polyandry based on genetic diversity per se, runs out of explanatory power after the tenth mating. This is a problem when we consider that some females mate at rates far in excess of the genetic diversity (GD) asymptote, rates hereafter called

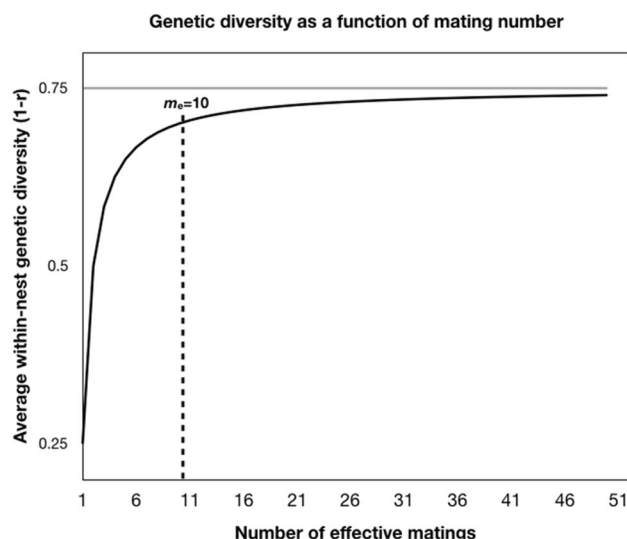


Fig. 1 Average hymenopteran within-colony genetic diversity as a function of the queen's effective mating number, m_e (Palmer and Oldroyd 2000)

hyperpolyandry, as shown in the African army ant *Dorylus (Anomma) molestus* $m_e = 17.5$ (Kronauer et al. 2004), neotropical army ants $m_e \leq 25$ (Barth et al. 2014), and honey bees *Apis* $m_e \leq 77$ (Neumann and Moritz 2000; Tarpay et al. 2004; Withrow and Tarpay 2018). How does natural selection produce such high rates of promiscuity when marginal increases in nestmate heterogeneity—the presumed effect driver—seem so small?

One answer could be that hyperpolyandry is an adaptation by queens for avoiding sperm depletion (Boomsma and Ratnieks 1996; Fjerdingstad and Boomsma 1998; Kraus et al. 2004).

Another answer could be that fitness-improving synergisms among workers of different patrilineal lines continue increasing at mating frequencies beyond the GD asymptote. Honey bees are well-known for their age-based polyethism schedule by which an individual progresses from interior brood- and nest-oriented tasks toward exterior guarding and foraging tasks (see Table 6.1 in Winston (1987)). Subfamily-based proclivities are known for several of these life-critical common tasks including guarding, undertaking, pollen collecting, nectar foraging, scouting, and nursing larvae (Calderone and Page 1991; Chapman et al. 2007). Optimizing ratios of such subfamily-based proclivities may be one adaptive outcome of hyperpolyandry according to a model by Fuchs and Moritz (1999). And while average within-nest genetic diversity as a function of mating number is capped by rules of hymenopteran inheritance (Fig. 1), the number of genotypic compositions has no such ceiling. Optimal compositions may continue increasing at mating frequencies in excess of $m_e = 10$, and indeed it is in this zone that the model of Fuchs

and Moritz predicts the highest fitness returns. These authors envisioned these optimal compositions as ratios of specialists to non-specialists, but we propose that the mechanism can apply more generally to the simple variance that exists in task proclivities among patriline with the result being more efficient execution of common tasks.

A second aspect of the model of Fuchs and Moritz (1999) applies to the inheritance of phenotypes that are rare and beneficial. Rarity is selected for because a colony dominated by specialists will be short on workers who perform life-critical common tasks. In the case of uncommon tasks such as behavioral parasite resistance, rarity can also be an outcome of selection that balances costs of maintaining the character against benefits realized by sustaining it (Boots and Begon 1993; van Baalen 1998). As a queen enlarges her sampling of local drones, she more closely matches her colony's allele frequencies to those of the breeding population. This averaging effect reduces the likelihood of environmental failures from phenotypic anomalies (Page et al. 1995a; Rueppell et al. 2008) and applies notably to rare beneficial alleles vulnerable to cliff edge effects (Mountford 1968; Boyce and Perrins 1987). A colony "falls off the cliff" when resistance specialisms are so rare that the colony fails to procure any specialists at all (Fuchs and Moritz 1999). Hyperpolyandry can be seen as a bid for avoiding such catastrophes.

It seems to us, therefore, that two testable hypotheses emerge from this discussion. (1) For colony phenotypes associated with common tasks, colony fitness will continue increasing with mating levels in excess of the GD asymptote, consistent with the idea of hyperpolyandry increasing optimum genotype compositions. (2) For colony phenotypes associated with uncommon tasks, benefits of the rare specialism will be particular to conditions of hyperpolyandry, consistent with the idea of hyperpolyandry capturing rare allele combinations, resisting cliff-edge effects.

In this study, we used instrumental insemination to create a 2×2 factorial experiment looking at two levels of polyandry crossing with two genetic lines of drone semen. The two levels of polyandry bracket the ranges of interest, with one near the GD asymptote (observed mating number = $m_o = 9$) and the other well into the range of hyperpolyandry ($m_o = 54$). By crossing the experiment with two genetic lines, we insert allelic diversity into the design, letting us observe outcomes of interactions between polyandry and common or rare traits. Drones of the first genetic line were sons of unselected wild type queens from whom we expected the full range of common colony phenotypes. Drones of the second line were sons of queens whose mothers were instrumentally inseminated breeders from a program selecting for Varroa Sensitive Hygiene (VSH), a rare behavioral resistance trait, and propagated by Jeffrey Harris at Mississippi State University. Genetic proclivities at the subfamily or individual level

are known for the common tasks brood nursing (Chapman et al. 2007) as well as for VSH (Spivak and Danka 2020).

VSH is a subset of the more general state of hygienic behavior, a heritable defensive response of honey bees to pathogens and parasites in brood. Worker bees expressing this character detect and uncapped brood cells containing pathogens or parasites and remove the contents, interrupting the parasite's reproductive cycle. Originally a natural adaptation associated with the bacterial brood pathogen *Paenibacillus larvae* (Woodrow and Holst 1942; Rothenbuhler 1964), hygienic behavior has since been associated with brood invaded by the parasitic brood mite *Varroa destructor* (Harbo and Harris 2005; Ibrahim and Spivak 2006).

It was Rothenbuhler (1964) who originally ascribed hygienic behavior to two independent loci—brood cell uncapping and removing—which when occurring at high rates of recessive homozygosity result in the hygienic colony phenotype. Hygienic behavior directed at *V. destructor* (VSH) is known to be uncommon, with 768 of 22,000 (3.49%) (Spötter et al. 2016) to 270 of 1000 (27%) (Scannapieco et al. 2017) of phenotyped worker bees expressing some components of the syndrome. The genes controlling the behavior number at least 4–5 and are generally associated with associative learning, sensitivity to external stimuli, memory, and olfaction (Spötter et al. 2016; Scannapieco et al. 2017). Although VSH is not the only resistance character in *A. mellifera* against Varroa mites, colonies of *A. mellifera* lacking any resistance phenotypes invariably die without artificial interventions (Büchler et al. 2010; Mondet et al. 2020). The combination of control by few loci of moderate to strong effect, high fitness returns, and vulnerability to cliff edge catastrophes makes VSH a good candidate for the rare specialist model for hyperpolyandry evolution.

There is, however, one criterion under which hygienic behavior does not meet expectations for a driver of polyandry. Uncommon resistance tasks are predicted to exert positive selection on polyandry (and by extension hyperpolyandry) when they are expressed by behavioral dominance, i.e., when only a small number of actors is needed to confer resistance to the whole colony (Sherman et al. 1988; Pamilo et al. 1994). This does not describe the hygienic behavior directed at brood disorders. Using freeze-killed brood as a stimulus in colonies composed of 0, 25, 50, or 100% hygienic workers, Arathi and Spivak (2001) showed that removal of freeze-killed brood increased linearly with hygienic compositions, achieving 100% only in colonies with 100% hygienic workers. Ecologically speaking, therefore, hygienic behavior operates not by "few actors for big effect," but rather by "many actors for any effect." To the extent these dynamics describe VSH, this suggests a non-mutually excluding variant of our hypothesis (2): hyperpolyandry avoids cliff edge catastrophes when the environmental

stressor demands high colony expression frequencies of a rare task genotype.

Methods

Queens and inseminations

We performed an experiment near Athens, Georgia consisting of four treatments in a 2×2 factorial arrangement with two levels of genetic Varroa resistance (semen from VSH-selected drones or non-selected wild type drones) and two levels of polyandry (high or low). There was one dedicated research apiary in which all treatments were represented. Each colony consisted of a 5-frame Langstroth nucleus hive and was started with one 2-lb (0.9-kg) package of worker bees from one supplier practicing a common *V. destructor* treatment regimen, thus normalizing incipient parasite levels across the experiment. Colonies were arranged in one large circle at the apiary to minimize effects of bee and parasite drift (Dynes et al. 2019a). The experiment was set up in April 2018 and ran until November 2018. The year before, we made up two sets of dedicated drone-source colonies for future inseminations, one set headed by wild type unselected queens and the other headed by queens from the VSH line.

In spring of 2018, we reared one wild type virgin queen and inseminated her with one wild type male. This single-drone inseminated queen was used to rear supersister virgin daughters who were subsequently inseminated and used in the experiment. This procedure minimizes maternal variation in experimental colonies (Harbo 1985). Supersister virgins were each randomly assigned one of four treatments in the 2×2 design: (1) VSH semen/low polyandry, (2) VSH semen/high polyandry, (3) wild type semen/low polyandry, or (4) wild type semen/high polyandry.

We had nine strong VSH drone-source colonies come out of winter, a number that dictated the multiples for our polyandry ranges. For our low polyandry treatment, we inseminated each supersister virgin with one male from each of the VSH drone source colonies ($m_o = 9$), and for our high polyandry treatment, each queen was inseminated with 6 males from each VSH drone source colony ($m_o = 54$). Supersister virgins in the wild type treatments similarly received one drone from each of 9 wild type drone source colonies ($m_o = 9$) or 6 from each wild type source colony ($m_o = 54$).

Each virgin queen was emerged and housed in her 5-frame nucleus colony before and after the artificial insemination (AI) procedure, following methods of Cobey et al. (2013). Semen from 9 or 54 males, as per protocol, was collected into one common capillary tube. A different tube was used for each prescribed polyandry/genetic line; no contamination across treatments was possible. However, more than one queen was inseminated from any given tube. The volume of

semen in each tube was increased by 15% with physiological saline (recipe 2.2.1 in Cobey et al. (2013)), thoroughly mixed in an Eppendorf tube to encourage a homogeneous drone representation per batch, re-drawn into the capillary tube, then used to inseminate 2–20 queens at an average dose of 4- μ L mixed semen each, thus removing effects of semen volume (Niño et al. 2012).

Queens were narcotized three times with CO₂—once on the day of insemination and once on each of two successive days thereafter; CO₂ narcosis stimulates egg laying (Mackensen and Roberts 1948). Experimental queens were housed in their home 5-frame nuclei and observed until all competent egg layers were identified. We waited 6 weeks thereafter to allow worker populations to turn over to progeny of the experimental queens.

Dependent variables

Colonies were sampled at each of four time points (July, August, September, November). We sampled colonies to determine brood production, brood survival, Varroa mite levels, and adult bee populations.

Brood production and worker bee population were derived by visually summing proportions of whole deep frames covered by brood or workers (Delaplane et al. 2013), converting frames of brood to cm² by the observation that one deep Langstroth comb (both sides) = 1760 cm², and converting frames of adult bees to bee populations with the regression model of Burgett and Burikam (1985). When necessary, we converted cm² brood to cells of brood with the conversion of 3.8 cells per cm² (Delaplane et al. 2013).

Brood survival was measured by removing a comb of open brood, laying over it a sheet of transparent acetate, using a felt-tip permanent marker to mark the location of 100 brood cells each containing a 1st or 2nd instar larva, then returning the comb to the hive; 3 days later, the comb was retrieved; the same acetate laid on top of it, and the number of surviving brood cells recorded.

Relative Varroa mite numbers are derived by inserting sticky sampling sheets into bottom board hive inserts and recording the number of Varroa mites trapped after 24 h (Dietemann et al. 2013).

Patriline determination

As a check on our success at creating two discrete classes of polyandry with AI, we were able to genotype workers from 18 colonies to determine effective realized paternity (m_e) in both polyandry classes.

A 50-worker sample was taken from each of 8 colonies in the $m_o = 9$ polyandry class and 10 colonies in the $m_o = 54$ polyandry class. DNA was extracted from the right hind leg for all honey bee specimens using a Qiagen DNeasy

Blood & Tissue Kit. Hind legs were thoroughly pulverized with micro-scissors and digested with proteinase K in a 56 °C water bath for 3 h with sample agitation every hour. Extracted DNA was stored at –80 °C until microsatellite amplification. Ten variable microsatellite loci were screened for all samples using two multiplexes: Plex 1 and Plex 2. Plex 1 included loci A107, A113, AP043, A024, and A006; Plex 2 included loci A28, A88, AP66, AP81, and B124 (Shaibi et al. 2008; Delaney et al. 2009). Both plexes were amplified for one cycle at 95 °C for 7 min, 30 cycles of 95 °C for 30 s, 54 °C for 30 s, 72 °C for 30 s, and a final extension at 72 °C for 60 min. A 10- μ L final reaction volume containing 5 μ L of PCR Master Mix (Promega, Madison, WI), 1.0–2.5 μ L of fluorescent dye-labeled primer, 0.9 μ L of nuclease-free water, and 2 μ L of DNA extract per sample was analyzed at the University of Delaware Sequencing and Genotyping Center at the Delaware Biotechnology Institute with an Applied Biosystems 3130 XL Genetic Analyzer via capillary electrophoresis.

Microsatellite repeat sizes were scored using Geneious Prime® 2020.0.5 software (Biomatters Ltd). The number (N_0) and frequency (p_i) of full sibling patriline were determined using raw microsatellite data in the software program COLONY 2.0.6.5 (Jones and Wang 2010). The observed patriline number (N_0), proportion of each patriline within each sample (p_i), and number of worker bees in each respective sample (n) were used to calculate m_e after (Nielsen et al. 2003; Tarpy et al. 2015):

$$m_e = \frac{(n-1)^2}{\sum_{i=1}^{N_0} p_i^2(n+1)(n-2) + 3 - n}$$

Statistical analyses

Data were analyzed with the JMP Pro platform 15.0 and SAS Studio software, Version 3.8 for Linux (© 2018 SAS Institute). To improve compliance with ANOVA assumptions for normality, data for cm^2 brood and bee population were square root transformed, and data for mite counts were transformed to the natural log. Mixed model ANOVAs were used, recognizing as fixed effects polyandry level (high or low), genetics (VSH or wild), sampling month, and all interactions thereof. Surviving colonies were sampled at each of four time points: July, August, September, and November. Colonies were thus treated as random repeating measures; their auto-correlations across time controlled with the compound symmetry covariance structure method. The exception was for brood survival which was measured only in July; for this, we ran a Wilcoxon non-parametric rank sums analysis, comparing brood survival by polyandry and genetics. Values in figures are presented as natural numbers.

Table 1 ANOVAs of main effects genetics (VSH or wild), level of polyandry (observed mating number = $m_o = 9$ or 54), sampling month, and interactions on whole-colony strength measures. Differences were accepted at the $\alpha \leq 0.05$ level

	df	F	P > F
cm² brood (square root)			
Genetics	1,33	0.69	0.4106
Polyandry	1,33	0.19	0.6648
G*P	1,33	1.68	0.2036
Month	3,50	54.54	<.0001*
G*month	3,50	0.43	0.7296
P*month	3,50	0.09	0.9662
G*P*month	3,50	0.74	0.5318
Mite drop in 24 h (natural log)			
Genetics	1,31	0.50	0.4865
Polyandry	1,30	0.15	0.7017
G*P	1,31	6.67	0.0147*
Month	3,62	51.17	<.0001*
G*month	3,59	0.21	0.8919
P*month	3,58	0.43	0.7340
G*P*month	3,59	1.59	0.2024
Cells brood per bee			
	1,73	0.59	0.4431
Adult bee population (square root)			
Genetics	1,34	1.38	0.2484
Polyandry	1,34	0.46	0.5032
G*P	1,34	1.50	0.2288
Month	3,52	40.5	<.0001*
G*month	3,52	4.40	0.0078*
P*month	3,52	0.77	0.5170
G*P*month	3,52	0.14	0.9336

Colony strength data such as ours are often autocorrelated, especially in repeated measures studies (Dynes et al. 2019b). Of special concern to us was the possibility that colony mite levels were independently affected by bee colony demographics. Increasing ratios of brood/adult bee are associated with increasing mite reproduction and population growth (Boot et al. 1994; Martin and Kemp 1997). So, for mite levels we included cells of brood per bee as a fixed effect covariate.

Results

Effective realized paternity (m_e) was significantly different ($F = 34.7$; $df = 1,16$; $P = 0.0001$; one-way ANOVA) between polyandry $m_o = 9$ (9.1 ± 2.2 ; $lsmeans \pm SE$; range = 6.2–15.1) and $m_o = 54$ (26.5 ± 2.0 ; range = 12.9–37.2), confirming that our AI protocols produced two discontinuous classes of polyandry.

Fig. 2 Experiment-wide effect of sampling month on cm^2 brood produced. Analyses were run on square root-transformed data, but natural means \pm SEs are shown here. Month lsmeans separated by Tukey–Kramer’s test at $\alpha \leq 0.05$

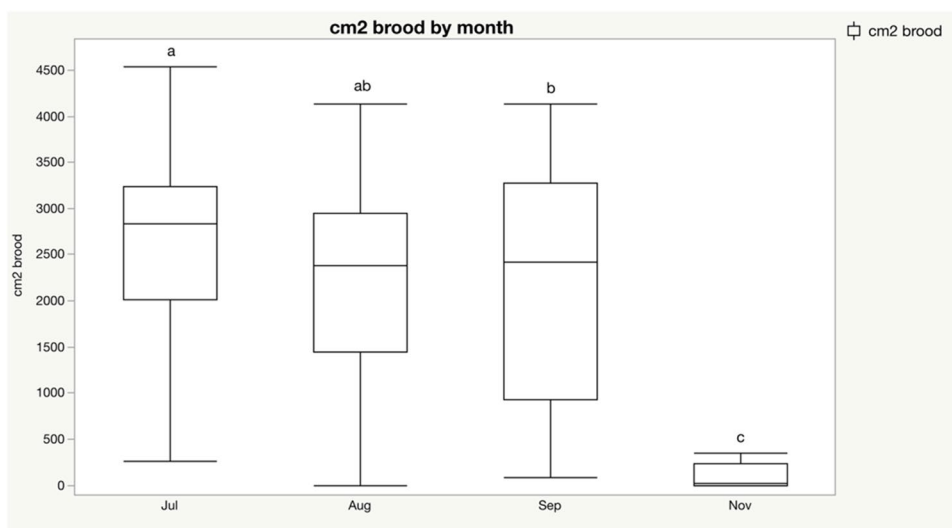


Table 1 gives ANOVA terms for three dependent variables. For cm^2 brood, there were significant effects of month with a predictable seasonal decline in November (Fig. 2).

For mite drop in 24 h, there were significant effects of month and an interaction between polyandry*genetics. Mite numbers increased from incipient lows in July to peaks in August and September, then dropped in November (Fig. 3). The interaction between polyandry*genetics for mite drop (Fig. 4) shows divergent responses to genetics between polyandry classes. Post hoc *t* tests showed that within $m_o = 9$, there was no difference in mite counts between genetic lines ($t = 1.19$, $P = 0.2438$), whereas within $m_o = 54$, mite counts were significantly lower in VSH colonies ($t = -2.69$,

$P = 0.0117$). There was no effect of the covariate cells of brood per bee.

For colony bee population, there were significant effects of month with a predictable decline in November. There was a significant interaction between month and genetics. Post hoc *t* tests showed no differences between genetic groups in July, August, and September, but in November, VSH colonies had significantly more bees than wild colonies ($t = 2.7$, $P = 0.0085$) (Fig. 5).

The Wilcoxon rank sums analysis for brood survival over 3 days found differences by polyandry ($\chi^2 = 7.18$, $P = 0.0074$), with significantly higher brood survival in $m_o = 54$ colonies than in $m_o = 9$ colonies (Fig. 6). There were no differences by genetics ($\chi^2 = 0$, $P = 0.9841$). There

Fig. 3 Experiment-wide effect of sampling month on 24-h Varroa mite counts on bottom board sticky sheets. Analyses were run on log-transformed data, but natural means \pm SEs are shown here. Month lsmeans separated by Tukey–Kramer’s test at $\alpha \leq 0.05$

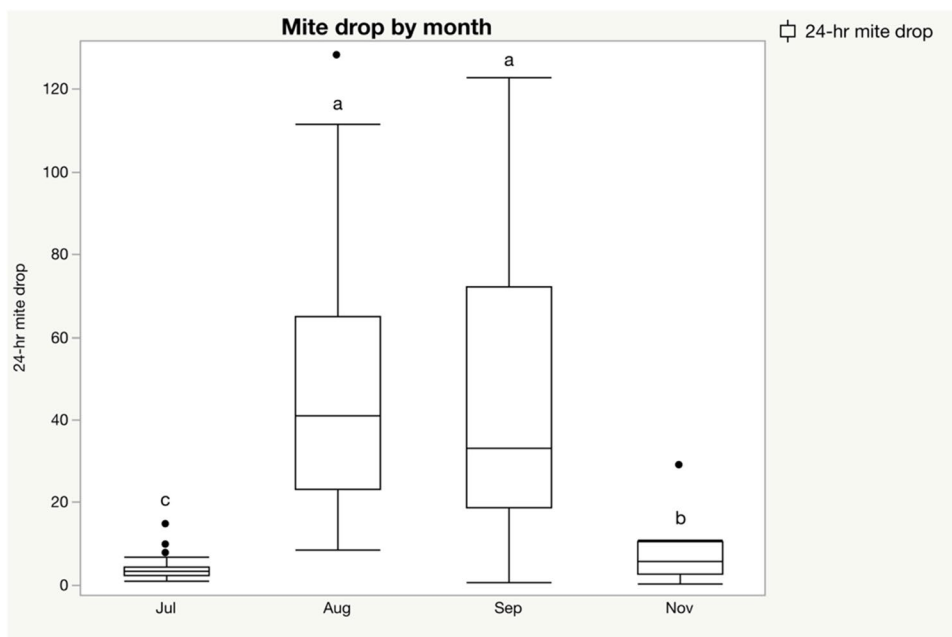
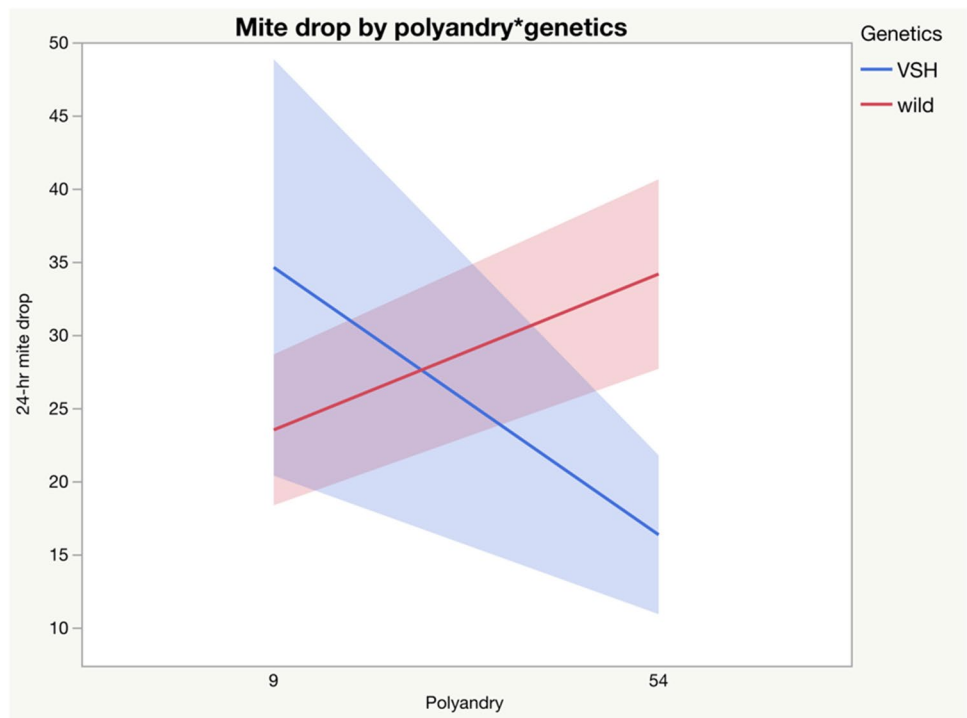


Fig. 4 Interaction between polyandry*genetics for mite counts. Analyses were run on log-transformed data, but natural means \pm SEs are shown here. Post hoc *t* tests showed that within $m_o=9$, there was no difference in mite counts between genetic lines, whereas within $m_o=54$ mite counts were significantly lower in VSH colonies



were marginal ($\chi^2 = 7.77, P = 0.0510$) differences when all four P*G combinations were compared, with a positive change vector in both genetic groups with increasing polyandry (Fig. 7).

Discussion

By limiting our genotyping to only 50 workers per colony, we most certainly underestimated m_e (Tarp and Nielsen

Fig. 5 Interaction between sampling month and genetics for colony adult bee population. Analyses were run on square root-transformed data, but natural means \pm SEs are shown here. Post hoc *t* tests showed no differences between genetic groups in July, August, and September, but in November VSH colonies had significantly more bees than wild colonies

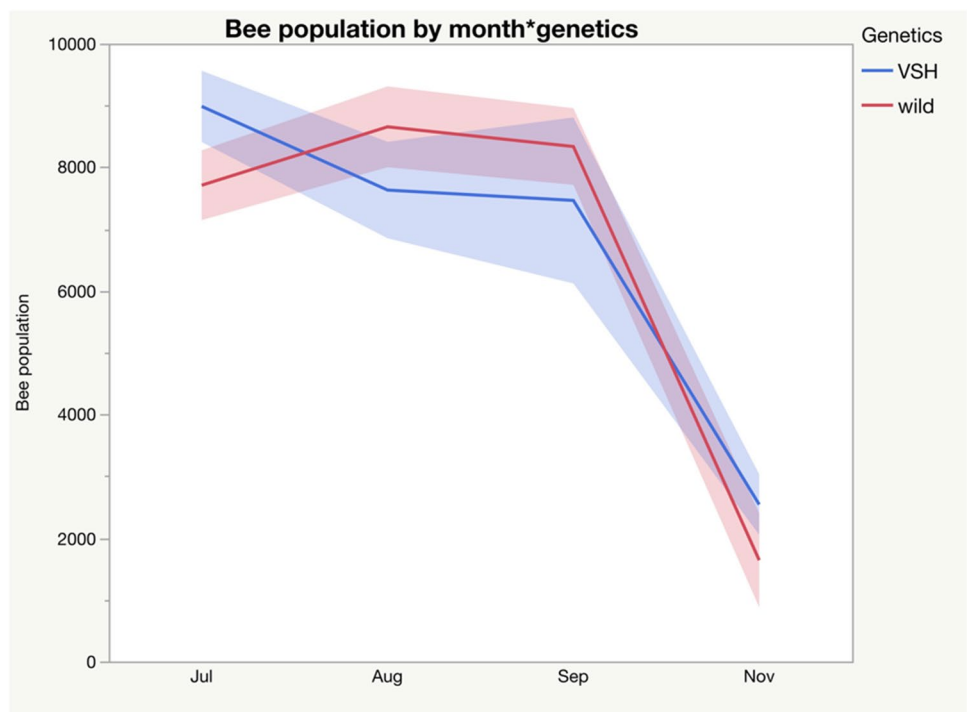
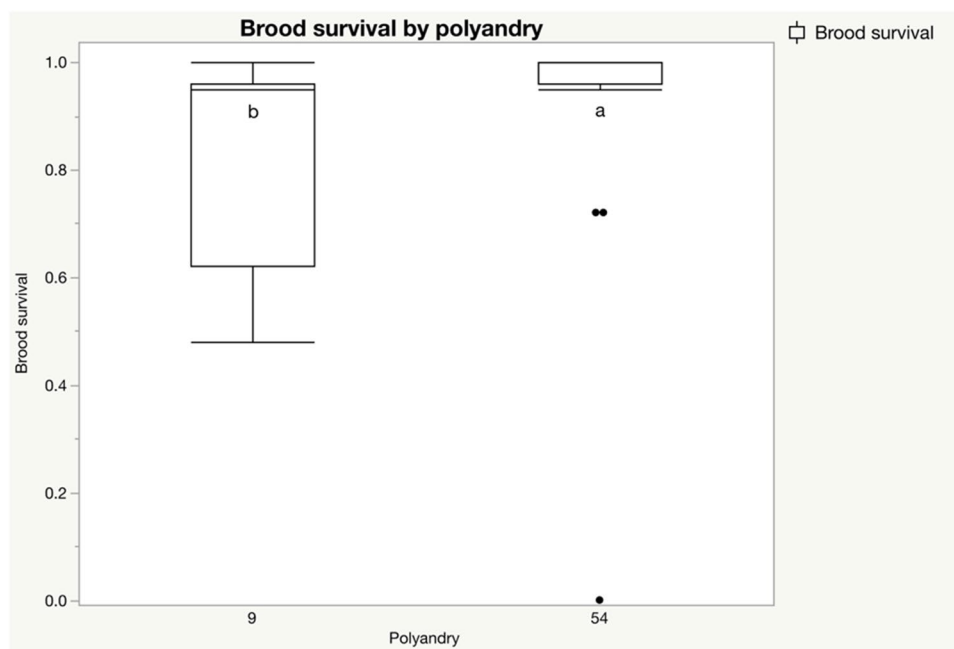


Fig. 6 Experiment-wide effect of polyandry on survival rate (3-day) of uncapped larvae. Wilcoxon ranked sum values are separated with Kruskal–Wallis test

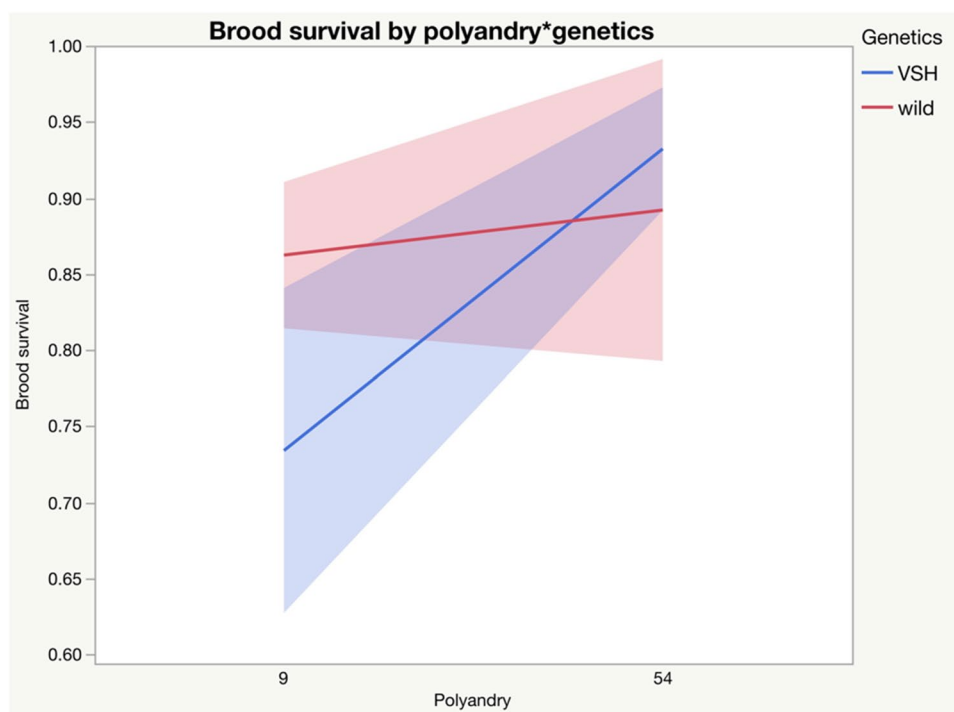


2002). This is especially true of the $m_o = 54$ treatments. Additionally, by constraining the number of drone source colonies, we limited the divergence of genetic diversity possible between polyandry levels. For instance, any six brothers pooled into a $m_o = 54$ insemination were related by $r = 0.5$. Each such sextet constitutes a comparatively exhaustive sampling of their mother's alleles, but it remains that all inseminations were made up of sons of no

more than nine mothers. Our intention for this constraint was to limit background variation and to treat polyandry in a narrow sense, in distinction from genetic diversity per se. But this protocol also means that effect sizes detected for polyandry in this study are conservative and underestimated.

We used a line of VSH drones as a model source of uncommon specialist alleles, but there were no direct effects

Fig. 7 Brood survival by polyandry*genetics. Wilcoxon ranked sum analysis showed only marginal ($P = 0.0510$) differences when all four P*G combinations were compared; however, natural means \pm SEs are shown here to illustrate the change vectors from $m_o = 9$ to $m_o = 54$ across both genetic groups



of VSH on any dependent variable in our study, including colony levels of the parasite *V. destructor* against which the VSH stock is specifically selected. VSH did, however, interact with month to deliver the highest colony bee populations by November (Fig. 5). Hyperpolyandry, on the other hand, directly improved brood survival (Fig. 6) and interacted favorably with VSH alleles to decrease overall colony parasite loads (Fig. 4).

Brood production and survival

The results for cm^2 brood production did not support our hypothesis (1). There were no significant terms in the model except for the predictable seasonal effect of sampling month (Fig. 2). It is worth noting, however, that Seeley and Tarpy (2007) showed increases in brood as one increased below the GD asymptote from $m_o = 1$ to $= 10$, and Delaplane et al. (2015) showed an increase in brood rearing efficiency as one increased within the hyperpolyandry zone from $m_o = 15$ to ≥ 30 , a pattern consistent with the change vector for cm^2 brood in the present study: $m_o = 9$ (2026 ± 1367 ; means \pm SD; range = 0–4532) vs. $m_o = 54$ (2226 ± 1248 ; range = 0–4136).

However, support for hypothesis (1) is found with brood survival over 3 days for which there was a significant increase from $m_o = 9$ to $= 54$ colonies (Fig. 6). Brood rearing efficiency is a global outcome of a cluster of common worker phenotypes including ones involved in foraging (Page et al. 1995b), detoxification (Gregorc et al. 2012), nursing (Chapman et al. 2007), thermal regulation, and cell cleaning (Schmickl and Crailsheim 2004), to name a few. Although only marginally significant, results for brood survival when examined by all P*G combinations show that the change vector was positive in both genetic classes when moving from $m_o = 9$ to $= 54$ (Fig. 7). The sum of evidence from this experiment and others supports that hyperpolyandry facilitates inheritance of gene families in a manner that improves brood rearing efficiency even beyond limits predicted by a simple GV model.

Colony mite levels

When it came to colony levels of *V. destructor*, there was a strong effect of sampling month, with mite levels tracking the seasonal increase and decrease of available hosts (Fig. 3). There were no direct effects of either polyandry or genetics; however, there was a significant interaction of polyandry*genetics such that the parasite suppressing effect of the VSH genotype expressed only at $m_o = 54$ (Fig. 4), supporting our hypothesis (2).

An increase in the ratio of brood cells per bee is expected to vary positively with mite population growth (Boot et al. 1994; Martin and Kemp 1997), thus presenting an

independent source of variation. In our experiment, this positive relationship was non-significant and barely detectable (mite drop = $16.3 + 3.7$ (brood per bee), $r^2 = 0.006$, $P = 0.3394$) and, accordingly, explained no variation in the whole model when included as a covariate. It appears, therefore, that the favorable interaction between hyperpolyandry and specialist mite resistance alleles operates independently of bee population demographics.

Bee population

Bee population can be seen as a sum of outcomes of all tasks, common and rare. Even though there were no differences by genetics in colony bee populations from July through September, by November with the approach of winter colony bee populations were significantly higher in VSH colonies (Fig. 5). As there were no direct or indirect effects of genetics on cm^2 brood or brood survival, the only candidate for an early predictor of stronger adult autumn populations in VSH colonies is the favorable genetics*polyandry interaction (Fig. 4) that delivered the best overall parasite suppression to VSH $m_o = 54$ colonies. Given the large negative effect size of *Varroa* on bee populations (Guzmán-Novoa et al. 2010), it appears that the benefit of hyperpolyandry interacting with the VSH genotype was sufficient to tip overall autumn bee populations in favor of VSH colonies.

Implications for the evolution of hyperpolyandry

By bracketing our queen inseminations within ($m_o = 9$) and above ($m_o = 54$) the GD asymptote (Fig. 1), our results directly show that phenotypic improvements from hyperpolyandry are not constrained by the ceiling on population allele capture imposed by rules of hymenopteran inheritance. Brood survival was significantly higher in $m_o = 54$ than in $m_o = 9$ colonies (Fig. 6), and the VSH genotype reduced colony parasite numbers only under conditions of hyperpolyandry, $m_o = 54$ (Fig. 4). To our knowledge, these are the first direct phenotypic comparisons across this qualitative divide. Our results are consistent with natural hyperpolyandry observed in army ants (Kronauer et al. 2004; Barth et al. 2014) and the Apini (Neumann and Moritz 2000; Tarpy et al. 2004; Withrow and Tarpy 2018). And while they do not refute alternate explanations such as sperm limitation (Simmons 2002) or chance (Tarpy and Page 2000), our results do support colony level adaptive benefits as a direct driver of hyperpolyandry.

It appears that hyperpolyandry increases acquisition of favorable genotype combinations for common tasks (hypothesis 1) in a process that is both independent of within-colony genetic diversity and possibly even continuous. Indeed, with its emphasis on optimal genotypic compositions over

average diversity, the model of Fuchs and Moritz (1999) admits no upper limit to mating numbers. In the case of a common task outcome like brood survival, this benefit holds across both genetic types (Fig. 7).

In contrast, effects of the specialist VSH phenotype on mite numbers were detectable only in $m_o = 54$ colonies, consistent with the ideas that hyperpolyandry is adaptive when allele acquisition for rare tasks (hypothesis 2) is more stochastic, i.e., vulnerable to “either/or” cliff edge catastrophes or when the environmental stressor demands high expression frequencies of a rare task.

Hypothesis (1) is consistent with social heterosis—the idea that intracolony genetic heterogeneity promotes advantageous synergisms of interacting genotypes (Nonacs and Kapheim 2007), but hypothesis (2) calls for evidence of a positive association between queen mating number and environmental constraints in natural populations. A variance-based model by Rueppell et al. (2008) predicts directional selection toward monandry under environmental conditions favoring exceptional colonies, and selection toward polyandry under conditions favoring average colonies, while a model by Gove et al. (2009) suggests that polyandry is favored when conditions demand an increasing to intermediate number of colony tasks, as would be expected in mild environments that support an accumulation of inter-species interactions. Together, these models have been interpreted to mean that monandry is favored in adverse, simple environments and that polyandry is favored in mild, complex environments, and indeed climate-based comparisons of populations of the ant *Lasius niger* seem to support this (Corley and Fjerdingstad 2011) (see, however, El-Niweiri and Moritz (2011)). A parasite-based context such as ours would seem to align with these modeled expectations to the extent that the parasite is a pioneer (monandry favoring exceptional colonies) or ubiquitous (polyandry favoring average colonies). In any case, our study signals that selection for hyperpolyandry will be sensitive to the kinds of tasks demanded by the environment and the scarcity of their controlling alleles.

Conclusions

Colony fitness increases as a function of the queen’s mating number, but the mechanisms of this genome to phenome translation shift along that mating continuum. Up to levels of $m_e \sim 10$, colony fitness improvements are consistent with the genetic variance (GV) hypotheses that see improvements as a function of increasing within-colony average genetic diversity. Mating levels in excess of $m_e = 10$ are common in nature, and colony fitness gains in that range are shown here experimentally with brood survival; however, fitness gains from a rare task—behavioral resistance to a dangerous parasite—only express in

the presence of the controlling alleles and at the highest polyandry level tested $m_o = 54$. Our results are consistent with at least two mechanistic hypotheses for the evolution of hyperpolyandry in social Hymenoptera: hyperpolyandry improves colony fitness by (1) increasing optimum genotypic compositions for common tasks, and (2) by capturing rare specialist allele combinations, resisting cliff-edge ecological catastrophes.

Ultimately, a formal treatment of our hypotheses will require describing changes to subfamily-based task distributions under the influence of hyperpolyandry and showing direct effects of these changes on colony fitness.

Acknowledgements We gratefully acknowledge the field assistance of Jennifer Berry, Christopher Blume, Daniel Borkoski, Jack Garrison, Katherine Hagan, Westley Hester, and Benjamin Sammarco. Statistical guidance was provided by Kim Love. The manuscript was greatly improved with constructive comments from Robin Moritz and three anonymous reviewers.

Funding This research was supported by USDA National Institute of Food and Agriculture Crop Protection and Pest Management program, award number 2017–70006-27266.

Data availability The dataset generated and analyzed during the current study are available in the Dryad repository, <https://doi.org/10.5061/dryad.8sf7m0cmn>.

Open Access This article is licensed under a Creative Commons Attribution 4.0 International License, which permits use, sharing, adaptation, distribution and reproduction in any medium or format, as long as you give appropriate credit to the original author(s) and the source, provide a link to the Creative Commons licence, and indicate if changes were made. The images or other third party material in this article are included in the article's Creative Commons licence, unless indicated otherwise in a credit line to the material. If material is not included in the article's Creative Commons licence and your intended use is not permitted by statutory regulation or exceeds the permitted use, you will need to obtain permission directly from the copyright holder. To view a copy of this licence, visit <http://creativecommons.org/licenses/by/4.0/>.

References

- Arathi H, Spivak M (2001) Influence of colony genotypic composition on the performance of hygienic behaviour in the honeybee, *Apis mellifera* L. *Anim Behav* 62:57–66
- Arnqvist G, Nilsson T (2000) The evolution of polyandry: multiple mating and female fitness in insects. *Anim Behav* 60:145–164
- Barth MB, Moritz RFA, Kraus FB (2014) The evolution of extreme polyandry in social insects: insights from army ants. *PLoS ONE* 9:e105621
- Boomsma JJ, Ratnieks FL (1996) Paternity in eusocial Hymenoptera. *Phil Trans R Soc B* 351:947–975
- Boot WJ, Sisselaar DJ, Calis JN, Beetsma J (1994) Factors affecting invasion of *Varroa jacobsoni* (Acari: Varroidae) into honeybee, *Apis mellifera* (Hymenoptera: Apidae), brood cells. *Bull Entomol Res* 84:3–10

- Boots M, Begon M (1993) Trade-offs with resistance to a granulosis virus in the Indian meal moth, examined by a laboratory evolution experiment. *Funct Ecol*:528–534
- Bourke AF (2011) Principles of social evolution. Oxford University Press
- Boyce MS, Perrins C (1987) Optimizing great tit clutch size in a fluctuating environment. *Ecology* 68:142–153
- Büchler R, Berg S, Le Conte Y (2010) Breeding for resistance to *Varroa destructor* in Europe. *Apidologie* 41:393–408
- Burgett M, Burikam I (1985) Number of adult honey bees (Hymenoptera: Apidae) occupying a comb: a standard for estimating colony populations. *J Econ Entomol* 78:1154–1156
- Calderone NW, Page RE (1991) Evolutionary genetics of division of labor in colonies of the honey bee (*Apis mellifera*). *Am Nat* 138:69–92
- Chapman NC, Oldroyd BP, Hughes WO (2007) Differential responses of honeybee (*Apis mellifera*) patriline to changes in stimuli for the generalist tasks of nursing and foraging. *Behav Ecol Sociobiol* 61:1185–1194
- Childress D, Hartl D (1972) Sperm preference in *Drosophila melanogaster*. *Genetics* 71:417–427
- Cobey SW, Tarpy DR, Woyke J (2013) Standard methods for instrumental insemination of *Apis mellifera* queens. *J Apic Res* 52:1–18
- Corley M, Fjerdingstad EJ (2011) Mating strategies of queens in *Lasius niger* ants—is environment type important? *Behav Ecol Sociobiol* 65:889–897
- Crozier RH, Fjerdingstad EJ (2001) Polyandry in social Hymenoptera—disunity in diversity? *Ann Zool Fenn* 38:267–285
- Delaney D, Meixner M, Schiff N, Sheppard W (2009) Genetic characterization of commercial honey bee (Hymenoptera: Apidae) populations in the United States by using mitochondrial and microsatellite markers. *Ann Entomol Soc Am* 102:666–673
- Delaplane KS, Pietravalle S, Brown MA, Budge GE (2015) Honey bee colonies headed by hyperpolyandrous queens have improved brood rearing efficiency and lower infestation rates of parasitic *Varroa* mites. *PLoS One* 10:e0142985
- Delaplane KS, van der Steen J, Guzman-Novoa E (2013) Standard methods for estimating strength parameters of *Apis mellifera* colonies. *J Apic Res* 52:1–12
- Dietemann V, Nazzi F, Martin S, Anderson D, Locke B, Delaplane K, Wauquiez Q, Tannahill C, Frey E, Ziegelmann B, Rosenkranz P, Ellis J (2013) Standard methods for varroa research. *J Apic Res* 52:1–54
- Dynes TL, Berry JA, Delaplane KS, Brosi BJ, de Roode JC (2019a) Reduced density and visually complex apiaries reduce parasite load and promote honey production and overwintering survival in honey bees. *PLoS ONE* 14:e0216286
- Dynes TL, Berry JA, Delaplane KS, de Roode JC, Brosi BJ (2019b) Assessing virulence of *Varroa destructor* mites from different honey bee management regimes. *Apidologie*. <https://doi.org/10.1007/s13592-019-00716-6>:1–14
- El-Niweiri MA, Moritz RF (2011) Mating in the rain? Climatic variance for polyandry in the honeybee (*Apis mellifera jemenitica*). *Popul Ecol* 53:421–427
- Firman RC, Gasparini C, Manier MK, Pizzari T (2017) Postmating female control: 20 years of cryptic female choice. *Trends Ecol Evol* 32:368–382
- Fjerdingstad EJ, Boomsma JJ (1998) Multiple mating increases the sperm stores of *Atta colombica* leafcutter ant queens. *Behav Ecol Sociobiol* 42:257–261
- Fuchs S, Moritz R (1999) Evolution of extreme polyandry in the honeybee *Apis mellifera l.* *Behav Ecol Sociobiol* 45:269–275
- Goodisman MA, Kovacs JL, Hoffman EA (2007) The significance of multiple mating in the social wasp *Vespula maculifrons*. *Evolution* 61:2260–2267
- Gove R, Hayworth M, Chhetri M, Rueppell O (2009) Division of labour and social insect colony performance in relation to task and mating number under two alternative response threshold models. *Insectes Soc* 56:319–331
- Gregorc A, Evans JD, Scharf M, Ellis JD (2012) Gene expression in honey bee (*Apis mellifera*) larvae exposed to pesticides and Varroa mites (*Varroa destructor*). *J Insect Physiol* 58:1042–1049
- Guzmán-Novoa E, Eccles L, Calvete Y, Mcgowan J, Kelly PG, Correa-Benítez A (2010) *Varroa destructor* is the main culprit for the death and reduced populations of overwintered honey bee (*Apis mellifera*) colonies in Ontario, Canada. *Apidologie* 41:443–450
- Harbo J (1985) Instrumental insemination of queen bees, parts I and II. *Am Bee J* 125:197–202, 282–287
- Harbo JR, Harris JW (2005) Suppressed mite reproduction explained by the behaviour of adult bees. *J Apic Res* 44:21–23
- Hughes WO, Boomsma JJ (2004) Genetic diversity and disease resistance in leaf-cutting ant societies. *Evolution* 58:1251–1260
- Hughes WO, Oldroyd BP, Beekman M, Ratnieks FL (2008) Ancestral monogamy shows kin selection is key to the evolution of eusociality. *Science* 320:1213–1216
- Ibrahim A, Spivak M (2006) The relationship between hygienic behavior and suppression of mite reproduction as honey bee (*Apis mellifera*) mechanisms of resistance to *Varroa destructor*. *Apidologie* 37:31–40
- Jones OR, Wang J (2010) Colony: a program for parentage and sibship inference from multilocus genotype data. *Molec Ecol Res* 10:551–555
- Keller L, Reeve HK (1994) Genetic variability, queen number, and polyandry in social Hymenoptera. *Evolution* 48:694–704
- Kraus F, Neumann P, Van Praagh J, Moritz R (2004) Sperm limitation and the evolution of extreme polyandry in honeybees (*Apis mellifera l.*). *Behav Ecol Sociobiol* 55:494–501
- Kronauer DJ, Schöning C, Pedersen JS, Boomsma JJ, Gadau J (2004) Extreme queen-mating frequency and colony fission in African army ants. *Mol Ecol* 13:2381–2388
- Linksvayer TA, Johnson BR (2019) Re-thinking the social ladder approach for elucidating the evolution and molecular basis of insect societies. *Curr Opin Insect Sci* 34:123–129
- Mackensen O, Roberts W (1948) A manual for the artificial insemination of queen bees. USDA Bureau of Entomology and Plant Quarantine
- Martin S, Kemp D (1997) Average number of reproductive cycles performed by *Varroa jacobsoni* in honey bee (*Apis mellifera*) colonies. *J Apic Res* 36:113–123
- Mondet F, Beaurepaire A, McAfee A, Locke B, Alaux C, Blanchard S, Danka B, Le Conte Y (2020) Honey bee survival mechanisms against the parasite *Varroa destructor*: a systematic review of phenotypic and genomic research efforts. *Int J Parasitol* 50:433–447
- Mountford M (1968) The significance of litter-size. *J Anim Ecol*:363–367
- Muller MN, Thompson ME (2012) Mating, parenting, and male reproductive strategies. In: Mitani J, Call J, Kappeler P, Palombit R, Silk J (eds) The evolution of primate societies. University of Chicago Press, pp 387–411
- Neumann P, Moritz R (2000) Testing genetic variance hypotheses for the evolution of polyandry in the honeybee (*Apis mellifera l.*). *Insectes Soc* 47:271–279
- Nielsen R, Tarpy DR, Reeve HK (2003) Estimating effective paternity number in social insects and the effective number of alleles in a population. *Mol Ecol* 12:3157–3164
- Niño EL, Malka O, Hefetz A, Teal P, Hayes J, Grozinger CM (2012) Effects of honey bee (*Apis mellifera l.*) queen insemination volume on worker behavior and physiology. *J Insect Physiol* 58:1082–1089

- Nonacs P, Kapheim K (2007) Social heterosis and the maintenance of genetic diversity. *J Evol Biol* 20:2253–2265
- Page RE (1980) The evolution of multiple mating behavior by honey bee queens (*Apis mellifera* L.). *Genetics* 96:263–273
- Page RE, Robinson GE, Fondrk MK, Nasr ME (1995a) Effects of worker genotypic diversity on honey bee colony development and behavior (*Apis mellifera* L.). *Behav Ecol Sociobiol* 36:387–396
- Page RE, Waddington KD, Hunt GJ, Fondrk MK (1995b) Genetic determinants of honey bee foraging behaviour. *Anim Behav* 50:1617–1625
- Palmer KA, Oldroyd BP (2000) Evolution of multiple mating in the genus *Apis*. *Apidologie* 31:235–248
- Pamilo P, Sundström L, Fortelius W, Rosengren R (1994) Diploid males and colony-level selection in *Formica* ants. *Ethol Ecol Evol* 6:221–235
- Pannell JR, Labouche A-M (2013) The incidence and selection of multiple mating in plants. *Phil Trans R Soc B* 368:20120051
- Parker GA (1970) Sperm competition and its evolutionary consequences in the insects. *Biol Rev* 45:525–567
- Pizzari T, Wedell N (2013) The polyandry revolution. *Phil Trans R Soc B* 368:20120041
- Ratnieks FL, Helanterä H (2009) The evolution of extreme altruism and inequality in insect societies. *Phil Trans R Soc B* 364:3169–3179
- Rothenbuhler WC (1964) Behavior genetics of nest cleaning in honey bees. IV. Responses of F1 and backcross generations to disease-killed brood. *Am Zool* 4:111–123
- Rueppell O, Johnson N, Rychtář J (2008) Variance-based selection may explain general mating patterns in social insects. *Biol Lett* 4:270–273
- Scannapieco AC, Mannino MC, Soto G, Palacio MA, Cladera JL, Lanzavecchia SB (2017) Expression analysis of genes putatively associated with hygienic behavior in selected stocks of *Apis mellifera* L. from Argentina. *Insectes Soc* 64:485–494
- Schmickl T, Crailsheim K (2004) Inner nest homeostasis in a changing environment with special emphasis on honey bee brood nursing and pollen supply. *Apidologie* 35:249–263
- Schmid-Hempel P (1998) Parasites in social insects. Princeton University Press
- Seeley TD, Tarpay DR (2007) Queen promiscuity lowers disease within honeybee colonies. *Phil Trans R Soc B* 274:67–72
- Shaibi T, Lattorff H, Moritz R (2008) A microsatellite DNA toolkit for studying population structure in *Apis mellifera*. *Molec Ecol Res* 8:1034–1036
- Sherman PW, Seeley TD, Reeve HK (1988) Parasites, pathogens, and polyandry in social Hymenoptera. *Am Nat* 131:602–610
- Simmons LW (2002) Sperm competition and its evolutionary consequences in the insects. Princeton University Press
- Spivak M, Danka RG (2020) Perspectives on hygienic behavior in *Apis mellifera* and other social insects. *Apidologie*:1–16
- Spötter A, Gupta P, Mayer M, Reinsch N, Bienefeld K (2016) Genome-wide association study of a *Varroa*-specific defense behavior in honeybees (*Apis mellifera*). *J Hered* 107:220–227
- Starr CK (1985) Sperm competition, kinship, and sociality in the aculeate Hymenoptera. In: Smith RL (ed) Sperm competition and the evolution of animal mating systems. Academic Press, Orlando, FL, pp 427–464
- Tarpay DR, Nielsen DI (2002) Sampling error, effective paternity, and estimating the genetic structure of honey bee colonies (Hymenoptera: Apidae). *Ann Entomol Soc Am* 95:513–528
- Tarpay DR, Page RE (2000) No behavioral control over mating frequency in queen honey bees (*Apis mellifera* L.): implications for the evolution of extreme polyandry. *Am Nat* 155:820–827
- Tarpay D, Nielsen R, Nielsen D (2004) A scientific note on the revised estimates of effective paternity frequency in *Apis*. *Insectes Soc* 51:203–204
- Tarpay DR, Delaney DA, Seeley TD (2015) Mating frequencies of honey bee queens (*Apis mellifera* L.) in a population of feral colonies in the northeastern United States. *PLoS ONE* 10:e0118734
- Treanore E, Derstine N, Amsalem E (2020) What can mechanisms underlying derived traits tell us about the evolution of social behavior? *Ann Entomol Soc Am* saaa033. <https://doi.org/10.1093/aesa/saaa033>
- van Baalen M (1998) Coevolution of recovery ability and virulence. *Phil Trans R Soc B* 265:317–325
- West SA, Griffin AS, Gardner A (2007) Social semantics: altruism, cooperation, mutualism, strong reciprocity and group selection. *J Evol Biol* 20:415–432
- Winston M (1987) The biology of the honey bee. Harvard University Press, Cambridge
- Withrow JM, Tarpay DR (2018) Cryptic “royal” subfamilies in honey bee (*Apis mellifera*) colonies. *PLoS ONE* 13:e0199124
- Woodrow A, Holst E (1942) The mechanism of colony resistance to american foulbrood. *J Econ Entomol* 35:327–330

Publisher's note Springer Nature remains neutral with regard to jurisdictional claims in published maps and institutional affiliations.