

Molecular Characterization and Phylogenetic Analysis of *Pseudomonas aeruginosa* Isolates Recovered from Greek Aquatic Habitats Implementing the Double-Locus Sequence Typing Scheme

Olga Pappa^{1,2,3} · Apostolos Beloukas^{2,4} · Apostolos Vantarakis⁵ · Athena Mavridou² · Anastasia-Maria Kefala³ · Alex Galanis³ 

Received: 3 October 2016 / Accepted: 12 December 2016 / Published online: 28 December 2016
© Springer Science+Business Media New York 2016

Abstract The recently described double-locus sequence typing (DLST) scheme implemented to deeply characterize the genetic profiles of 52 resistant environmental *Pseudomonas aeruginosa* isolates deriving from aquatic habitats of Greece. DLST scheme was able not only to assign an already known allelic profile to the majority of the isolates but also to recognize two new ones (*ms217-190*, *ms217-191*) with high discriminatory power. A third locus (*oprD*) was also used for the molecular typing, which has been found to be fundamental for the phylogenetic analysis of environmental isolates given the resulted increased discrimination between the isolates. Additionally, the circulation of acquired resistant mechanisms in the aquatic habitats according to their genetic profiles was proved to be more extent. Hereby, we suggest that the combination of the DLST to *oprD* typing can discriminate phenotypically and genetically related environmental *P. aeruginosa*

isolates providing reliable phylogenetic analysis at a local level.

Keywords DLST · *P. aeruginosa* · *oprD* · Aquatic habitats · Phylogenesis

Introduction

In recently published studies, *Pseudomonas aeruginosa* has been introduced as a potential reservoir of resistance genes in a variety of aquatic habitats such as swimming pools, water tanks, main waters [1], freshwaters, and wastewaters [2, 3]. The bacterium besides its intrinsic antimicrobial resistance due to low outer membrane permeability (*oprD* loss), chromosomally encoded *AmpC*, as well as an extensive efflux pump system, holds a prominent place in the development of acquired resistance mechanisms [4]. Understanding the genetic structure of resistant environmental *P. aeruginosa* isolates is of paramount importance in order to get insight into the genetic complexity and ecological versatility of this opportunistic pathogen [5, 6]. The extensive diversity of *P. aeruginosa* has given rise to the evolutionary study of the bacterium using various typing methods such as multi-locus variable number of tandem repeats analysis (MLVA) [7], pulsed field gel electrophoresis (PFGE) [8, 9], multi-locus sequence typing (MLST) [10, 11], and recently, double-locus sequence typing (DLST) [12–15].

MLST is one of the major “typing successes” of the past decade. It has been widely used in studies focusing on microbial population structure and molecular typing of clinical isolates, representing specific phenotypic and genotypic characteristics of the bacterium [16–18; <http://pubmlst.org/paeruginosa>]. However, the application

Electronic supplementary material The online version of this article (doi:10.1007/s00248-016-0920-8) contains supplementary material, which is available to authorized users.

✉ Alex Galanis
agalanis@mbg.duth.gr

- ¹ Central Public Health Laboratory, Hellenic Center for Disease Control and Prevention, Athens, Greece
- ² Department of Medical Laboratories Technological Educational Institute of Athens, Athens, Greece
- ³ Department of Molecular Biology and Genetics, Democritus University of Thrace, Alexandroupolis, Greece
- ⁴ Department of Clinical Infection, Microbiology and Immunology, Institute of Infection and Global Health, University of Liverpool, Liverpool, UK
- ⁵ Environmental Microbiology Unit, Department of Public Health, School of Medicine, University of Patras, Patras, Greece

of MLST in environmental isolates is still quite limited, and it is questionable whether this method is only suitable for occasional isolates or for the entire spectrum [10, 19]. Novel sequences have been identified for the seven housekeeping genes of environmental isolates and were submitted to the MLST database, but the new ST types could not be identified by the initial protocol [3, 16, 20]. This led to modification of the protocol, which added extra time and cost to an already expensive and time-consuming method, while at the same time, the sensitivity and the reproducibility were reduced [11, 21, 22]. Therefore, the development of alternative methods was required in order to facilitate epidemiological and phylogenetic studies and to enable faster and cost-effective, large-scale bacterial genotypic analysis.

DLST is a recently developed typing scheme based on the partial sequencing of three highly variable loci: *ms172*, *ms217*, and *oprD* [12]. As the combination of two loci gave resolution results only slightly lower than the combination of the three loci, the authors proposed the use of only two loci in the DLST scheme for *P. aeruginosa* instead of three [12]. The new sequence-based scheme was compared to MLST in a large number of clinical and environmental *P. aeruginosa* isolates, proving that when epidemiological and phylogenetic analyses are conducted at a local level, MLST can be replaced by DLST [13]. The online publicly available DLST database (<http://www.dlst.org/Paeruginosa/>) uses nucleotide sequences of the two loci (*ms172* and *ms217*) to define the DLST type [12]. The method is new, and thus, there is not much published information regarding both clinical and environmental isolates of *P. aeruginosa* [12–15]. Although in Basset's et al. work, the *oprD* locus was not selected for the final typing scheme, it has been reported as one of the important genetic markers that can be used in population studies, not only due to its contribution to carbapenem resistance but also due to its high genetic diversity [23]. It has been used for typing and for phylogenetic purposes both in clinical and environmental strains in order to reveal additional evolutionary forces that contribute to the high clonality of *P. aeruginosa* population [24].

At the present study, all three typing schemes, the DLST scheme as it has been proposed [12], the *oprD* typing scheme, and the combination of the three loci (*ms172*, *ms217*, and *oprD*) were applied to environmental *P. aeruginosa* isolates collected from various water ecosystems in Greece. Using a bacterial population chosen as to represent various resistant profiles, different sampling sites, and many water types, the aims of the study were (a) to evaluate the application of the DLST method in the selected environmental *P. aeruginosa* isolates and to elucidate the predominant clone in these habitats, (b) to study the distribution of the resistant phenotypes among the DLST types, and (c) to estimate the discriminatory power of the novel DLST method when a third locus was added to the initial proposed scheme.

Material and Methods

Bacterial Isolates

A well-characterized repository of 245 confirmed *P. aeruginosa* strains isolated during the period 2011–2014 [official monitoring sampling schedule of the Water Analysis Department, Central Public Health Laboratory (CPHL), Hellenic Center for Disease Control and Prevention (HCDCP)] [1] was used as the pool for the tested strains. A subset of 58 (58/245; 23.7%) isolates was chosen by simple random sampling method (SAS 9.3) so that the final number of the isolates was representative of the total population. Criteria for the collection of isolates were (a) the type of water sample, (b) the isolates' geographical distribution, (c) the isolates' resistant phenotype, and (d) the year of the isolation. The characteristics of the 58 isolates are presented in detail in Table S1. Two reference strains were used as control strains: (a) a clinical control provided by HPA/NEQAS (the HPA External Quality Control Scheme) and (b) *P. aeruginosa* PAO1 (Collection of Institute Pasteur CIP104116, www.crbip.pasteur.fr).

Isolation of Genomic DNA

P. aeruginosa genomic DNA was extracted using the Purelink Genomic DNA mini kit (Invitrogen, UK) following the manufacturer's instructions after 48-h growth in nutrient broth and nutrient agar.

Antibiotic Susceptibility Testing

All isolates were tested for susceptibility to 14 commonly used antibiotics belonging to four different classes: non-carbapenem b-lactams: ceftazidime (CAZ; 30 µg), cefotaxime (CTX; 30 µg), cefepime (FEP; 30 µg), piperacillin (PIP; 75 µg), ticarcillin (TIC; 75 µg), piperacillin/tazobactam (TZP; 100 µg/10 µg), ticarellin/clavulanate (TCC; 75 µg/10 µg), aztreonam (ATM; 30 µg); carbapenems: imipenem (IPM; 10 µg) and meropenem (MEM; 10 µg); aminoglycosides: amikacin (AN; 30 µg), tobramycin (TOB; 30 µg), gentamicin (GM 30 µg); fluoroquinolones: ciprofloxacin (CIP; 5 µg) according to guidelines of the Clinical and Laboratory Standards Institute Guidelines 2011/M100S21 (<http://clsi.org>). The interpretation of the resistant phenotypes was performed according to published literature [25].

Detection of Extended Spectrum Beta-Lactamases and Metallo Beta-Lactamases

Extended spectrum beta-lactamase (ESBL) isolates were phenotypically detected by a modified double disk synergy test (DDST) with the addition of boronic acid to the antibiotic

disks, as previously described [26]; metallo beta-lactamase (MBL) detection was performed according to Giakkoupi et al. [27]. Consequently, isolates phenotypically positive for ESBL and MBL production were subjected to PCR for the detection of ten different ESBL and six MBL genes (PER-1, OXA-2, VEB-1A, GES-1A, TEM-A, SHV-A, CTX-M groups 1, 2, 8/25, and 9; VIM-2, IMP, SIM-1, GIM-1, SPM-1, and NDM). PCR conditions and the specific primers used for the above genes were selected from published literature [28–33] (Table S2).

Double-Locus Sequence Typing and *oprD* Typing

DLST and *oprD* typing were implemented in 52 isolates of *P. aeruginosa* and in the selected reference strains [12]. Six isolates with resistant phenotypes R3 {loss of *oprD*} and MBL were excluded from the typing procedure, as these isolates did not express the *oprD* gene. However, they were included in Table S1 in order to present their significant antibiotic profile. Briefly, DNA extracts were used for PCR amplification of the three loci, *ms172*, *ms217*, and *oprD*, using specific primers (Table S2). Standard gel electrophoresis was applied, and gels stained with Gel Red (Gel Red nucleic acid gel stain 10,000× in water; BIOTIUM) were examined under UV light for the presence of one visible clear band per PCR; as it was expected, the length of DNA sequences was variable among isolates. PCR products were purified (NucleoSpin, Gel and PCR clean-up, MACHEREY-NAGEL) and were sequenced by CeMIA SA (<http://cemia.eu/sangersequencing.html>) using the amplification primers for the three loci (Table S2). The procedure was repeated a second time when the sequence quality was too low or no sequence was obtained. If no sequence of good quality was obtained after the second step, the result for the isolate was considered a null allele [12].

Analysis of the Sequenced Data

All chromatograms were imported, edited, and trimmed in Sequencer 5.3 (<https://www.genecodes.com>) using the start signatures of the trimmed pattern for the three loci, *ms172*, *ms217*, and *oprD*, according to the protocol [12]. Trimmed sequences were subjected to BLAST for the identification of the appropriate product and then to the DLST database (<http://www.dlst.org/Paeruginosa/>) for allele assignment of the genetic markers *ms172* and *ms217*; if there was no identification for the submitted locus, the procedure for submission of new alleles in the DLST database was followed and a new locus number was assigned; the *oprD* sequences were searched against the NCBI database and compared to the *oprD* sequence of the reference strain PAO1.

Molecular Epidemiological Analysis

- *eBURST Analysis and Minimum Spanning Trees Construction*

DLST markers are considered highly stable in the case of local phylogenetic studies [12, 34]; however, during a long-term investigation, they probably undergo genetic changes [34]. In studies, as the present one, it is important to use the suitable model for analyzing sequences obtained from environmental *P. aeruginosa* isolates, deriving from a specific region in a 3-year period [34, 35]. The Global optimal eBURST analysis [35; <http://www.phyloviz.net/goeburst/> accessed on 01/08/2016], proposed in the literature for analysis of DLST data of *Staphylococcus aureus* isolates [34, 36], was chosen, and the same rules and definitions in analysis were implemented.

- *Maximum Likelihood Phylogenetic Analysis of the *oprD**

Maximum likelihood (ML) phylogeny was obtained with RaxML-HCP2 v8 [37] using GTR+I+G that was identified as the best-fitted model using jModelTest2 [38].

Index of Diversity and Concordance of the Typing Methods

The index of diversity and the degree of congruence of the three typing schemes used were calculated using an online tool (<http://www.comparingpartitions.info/> accessed on 01/09/2016). The discriminatory power of the typing methods described in the current work was evaluated using the Simpson's index of diversity, where an index >0.90 is considered ideal indicating that the typing method is able to distinguish each isolate from all others. The concordance between the methods was estimated using the Wallace and Rand coefficients; the Rand index (R) estimates the proportion of agreement taking into account that the agreement between the partitions could arise by chance; the Wallace coefficient (W) estimates the probability that two isolates grouped in the same type by one method will be grouped in the same type using another typing technique [39].

Results

Antimicrobial Susceptibility Profiles and Detection of Beta-Lactamase Producers

The 58 isolates presented various resistant phenotypes (Fig. 1a). A substantial portion of the resistant isolates (9/20; 45%) was characterized as ESBL producers according to DDS test (synergy between amoxicillin + clavulanic acid (AMC)

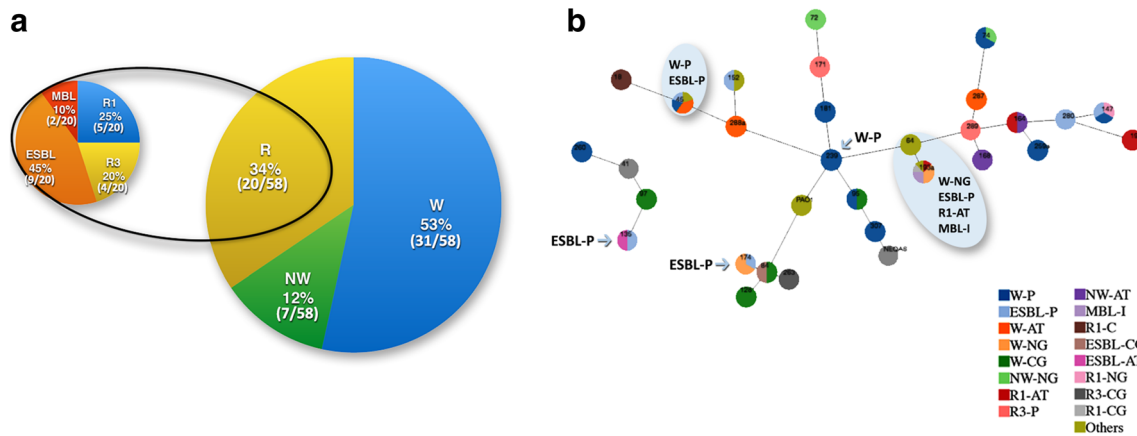


Fig. 1 (a) Resistant phenotypes of the 58 *Pseudomonas aeruginosa* isolates and (b) Minimum Spanning tree resulting from e-burst analysis showing the distribution of the microbial resistance into the various geographical sites. Abbreviations: Resistant phenotypes: wild-type W (Wild-type); susceptible to all antibiotics presenting no acquired resistance mechanism while the intrinsic mechanisms are not expressed; non-wild-type NW (Non-Wild-type); susceptible to all antibiotics except ticarcillin, ticarcillin + clavulanic acid,

and ceftazidime (CAZ) or cefotaxime (CTX)), presenting multi-drug resistant patterns (e.g., isolates 121, 174, 299, Table S1). Two isolates (266, 267, Table S1) presented the characteristic synergy between meropenem (MEM)/imipenem (IPM) and the disk with EDTA and were characterized as MBL producers (2/20; 10%). The nine ESBL and the two MBL producers were screened for the presence of β -lactamase genes. Out of the ten ESBL genes tested, the CTX-M group 9 was detected in only one isolate (Table S1). None of the remaining ESBL genes was detected in any of the nine isolates tested with the primer sets used in this study. The two phenotypically MBL-positive isolates did not produce positive results for the six MBL genes tested. The resistant phenotypes were distributed across all geographical areas (Fig. 1b), while the Peloponnese presented the highest percentage of all the resistant profiles. ESBL isolates appeared in three geographically unrelated areas of Greece together with other resistant mechanisms (Fig. 1b).

DLST Analysis

Fifty-four isolates (including the reference strains) were successfully typed implementing the DLST scheme. DLST was able to assign an already known allele number for 40 isolates, while for 12 isolates, two new loci were recognized for the *ms217* marker (allele 190 and 191, <http://www.dlst.org/Paeruginosa/ms217.txt>). The phylogenetic analysis revealed 27 types with DLST type 90-190 (6/54; 11.1%) being the predominant one; the second new allele 191 (3/54; 5.5%) was combined with three different *ms172* loci (1-191, 83-191, 10-191). Five out of the 54 isolates (9.3%) presented the DLST type 90-139;

and cefotaxime; R.; resistant; R1.; AmpC, partially/fully derepressed with resistance to aztreonam; R3.; corresponded to loss of porin-D; ESBL.; extended spectrum β -lactamases/Extended Spectrum Beta-Lactamases; MBL.; Metallo β -Lactamases/. Sampling sites: C.; Cyclades islands; AT.; Attica province; P.; Peloponnese county; NG.; Northern Greece; CG.; Central Greece; I.; Ionian islands; Others.; resistant phenotypes being present to the sampling sites in smaller numbers

3/54 isolates had the DLST types 18-54, 19-33, 20-105, and 55-58, respectively (5.6% each), while the rest 28 isolates were distributed among eight different DLST types including 2 isolates each (16/54; 29.6% in total) and 12 isolates (12/54; 22.22%) presenting unique DLST types, including the reference strains: NEQAS: 32-39 and PAO1: 16-4 (Fig. 2a; Table S1). The predominant DLST type (90-190) was present in wild-type isolates as well as in isolates with resistant phenotype R1 deriving from Northern and Central Greece and the Ionian islands present in a variety of water samples. ESBL isolates were distributed among seven DLST types; five of them (20-105, 90-139, 55-58, and 19-162) co-existed with wild-type, non-wild-type, and R1 isolates recovered mainly from the Peloponnese with no significant correlation to the types of water samples (Fig. 2a; Table S1). The allele 190 combined with other *ms172* loci was also present in Attica and the Peloponnese in ESBL producers. The new allele 191 for the *ms217* gene was detected exclusively in isolates deriving from thermal water samples from Central Greece presenting wild-type and ESBL resistant phenotypes including the CTX-M group 9 isolate (Fig. 2b). Finally, the R3 resistant phenotype, which was present exclusively in main water samples mainly from the Peloponnese, presented unique DLST types (21-96, 19-91, 59-21) (Table S1).

oprD Typing

oprD locus was detected in 54 isolates (including the reference strains). BLAST analysis of the 54 *oprD* genes distributed the isolates in nine groups (G1–G9), with two groups, 1

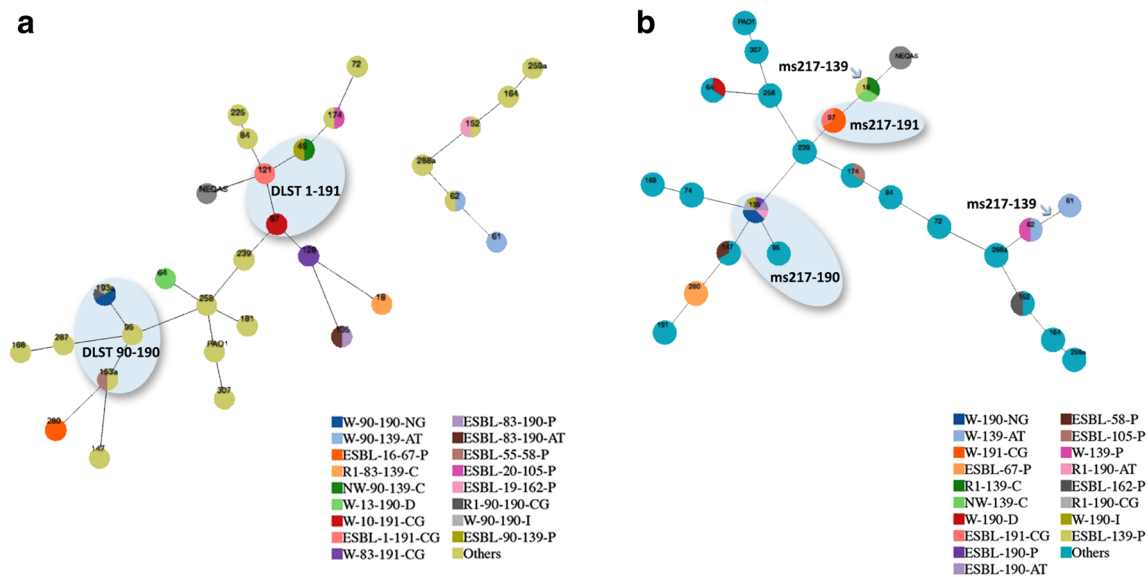


Fig. 2 Minimum sSpanning trees resulting from e-burst analysis of *Pseudomonas aeruginosa* isolates based on the DLST data. Distribution of (a) the DLST-types and (b) the ms217 genetic marker to the geographical sites and of the resistant phenotypes into the allelic profiles is presented. Abbreviations: Resistant phenotypes: wild-type W (W-Wild-type); susceptible to all antibiotics presenting no acquired resistance mechanism while the intrinsic mechanisms are not expressed;

non-wild-type NW (NW-Non-Wild-type); susceptible to all antibiotics except ticarcillin, ticarcillin + clavulanic acid, and cefotaxime; R1; AmpC, partially/fully derepressed with resistance to aztreonam; Sampling sites: C; Cyclades islands; AT; Attica province; P; Peloponnese county; NG; Northern Greece; CG; Central Greece; I; Ionian islands; D; Dodecanese islands; Others; DLST-types and ms217 genetic marker being present to the sampling sites in smaller numbers

and 4, including the majority of the isolates, with 21 and 8 isolates, respectively. BLAST search against the NCBI database showed that the coding sequence of the group 1 oprD gene was identical to *P. aeruginosa* strain PA121617 (GenBank accession no. CP016214), while the coding sequence of the group 4 oprD gene was identical to *P. aeruginosa* strain MTB-1 (GenBank accession no. CP006853). The reference strain NEQAS was identical to *P. aeruginosa* strain ATCC 27853 (GenBank accession no. CP015117), while the coding sequence of PAO1's oprD gene was identical to *P. aeruginosa* genome assembly PAO1OR, chromosome I (GenBank accession no. LN871187), as expected. The above results and the coding sequences of the rest oprD groups are shown in Table S1. The ML phylogeny revealed five major clusters—A, B, C, D, and H—and cluster E with the reference strain PAO1 as outgroup; only the cluster A was consistent with the initial results containing all the group 1 oprD isolates, except one (167), which presented various single nucleotide polymorphisms (SNPs) comparing to the major group; it was located at a distance from the major group, and it was consequently considered as a singleton (C2); the reference strain NEQAS was located in cluster A. Cluster B was divided into five subgroups where the B3 subgroup was separated from B2 and B4 with three and two SNPs, respectively (isolate 137). Cluster C was separated into four subclusters consisted of three different oprD groups; finally, cluster D was divided into four subclusters where the

D2 subgroup was separated from subgroup D3 with two SNPs (isolate 225). Interestingly, group 3 oprD, as defined by ML analysis, was located in two different clusters (clusters B1 and H) very distant from each other, while the rest oprD groups tended to cluster together into small subgroups. The reference strain PAO1 was located separately from all other clusters as expected (Fig. 3a). The major oprD group 1 (cluster A) was present in all geographical sampling sites, water sample types, and resistant phenotypes. Isolates in G4 (clusters B2, B3, B4) derived from four different water sample types mainly from sampling sites of the Peloponnese presenting wild-type and ESBL resistant isolates; group 3 oprD (clusters B1 and H) was present mainly in resistant and wild-type isolates deriving from main water samples in the Attica region. For the remaining groups, there was no significant correlation to the three parameters considered (geographical areas, water sample types, and resistant phenotypes) (Fig. 3).

DLST_n_oprD

The three loci (*ms172*, *ms217*, *oprD*) were combined in order to examine the impact of the third loci on the discriminatory power. The DLST_n_oprD analysis revealed 43 types with (a) the combination 90-190-A being the predominant one with four isolates and (b) followed by the combination 19-33-B2 with three isolates. The eBURST analysis for the DLST and

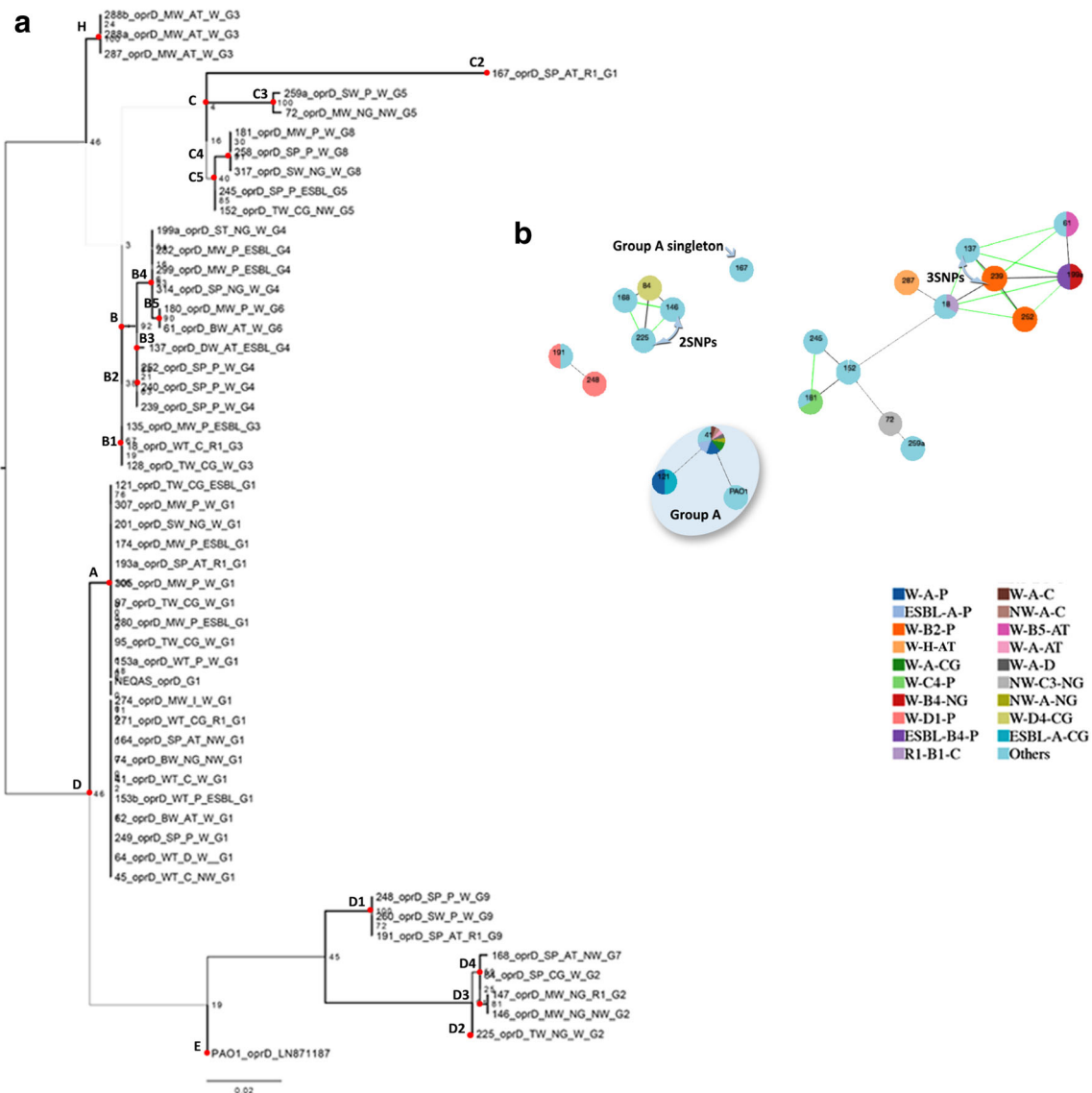


Fig. 3 (a) ML phylogeny of the *Pseudomonas P. aeruginosa* isolates based on the *oprD* sequences; (b) Minimum Spanning tree resulting from e-burst analysis presenting the distribution of the *oprD*- groups to the geographical sites and of the resistant phenotypes into the *oprD*- clusters. Abbreviations: Resistant phenotypes: wild-type W (WWild-type); susceptible to all antibiotics presenting no acquired resistance mechanism while the intrinsic mechanisms are not expressed; non-wild-type NW (NWNon-Wild-type); susceptible to all antibiotics except

ticarcillin, ticarcillin + clavulanic acid, and cefotaxime; R1; AmpC, partially/fully derepressed with resistance to aztreonam; ESBL; Extended Spectrum β Beta-Lactamases. / Sampling sites: C; Cyclades islands; AT; Attica province; P; Peloponnese county; NG; Northern Greece; CG; Central Greece; I; Ionian islands; D; Dodecanese islands; Others; *oprD*-groups being present to the sampling sites in smaller numbers

DLST_n_*oprD* types showed that the use of the *oprD* loci increased the discrimination between genetically related isolates and their phylogenetic distance (Fig. 4). DLST types 90-139 and 90-190 were divided into three smaller clusters representing three different *oprD* groups. Isolates with the new allele 191 were clustered phylogenetically distant as they presented various *ms172* and *oprD* alleles. Three isolates (174, 225, 314), which belonged to 20-105 DLST type, now constitute three different combinations, 20-105-A, 20-105-D2, and 20-105-B4, according to their *oprD* sequence (Fig. 4). Wild-type and non-wild-type isolates tended to

appear together as it was expected, while R1 isolates and ESBL producers were scattered throughout the phylogenetic tree; the same distribution was observed when the criterion was the sampling site (Fig. 4).

Discriminatory Power and Congruence of the Typing Schemes

The index of discrimination, the AR and AW coefficients of congruence between DLST, *oprD* typing, and DLST_n_*oprD* are shown in Table 1. The combination of the three genes

increased the discrimination between the isolates tested as it was expected, while the *oprD* typing presented the lowest discrimination power. The AR coefficient when DLST and DLST_n_*oprD* were compared was equal to 0.491, which indicates a satisfactory match between partitions. The coefficient was lower when *oprD* typing was compared to DLST or to DLST_n_*oprD*. The fact that the AW for DLST_n_*oprD* ↔ DLST = 1.000 and DLST ↔ DLST_n_*oprD* = 0.326 means that if two strains are in the same cluster by DLST_n_*oprD*, they have 100% chance of having the same DLST type, while conversely, the chance is only about 33%. This indicates that at least in the population tested, the DLST_n_*oprD* typing was more discriminatory than the DLST. This was also enhanced by the AW coefficients of the {DLST_n_*oprD* ↔ *oprD* typing vs *oprD* typing ↔ DLST_n_*oprD*} and {DLST ↔ *oprD* typing vs *oprD* typing ↔ DLST} combinations (Table 1).

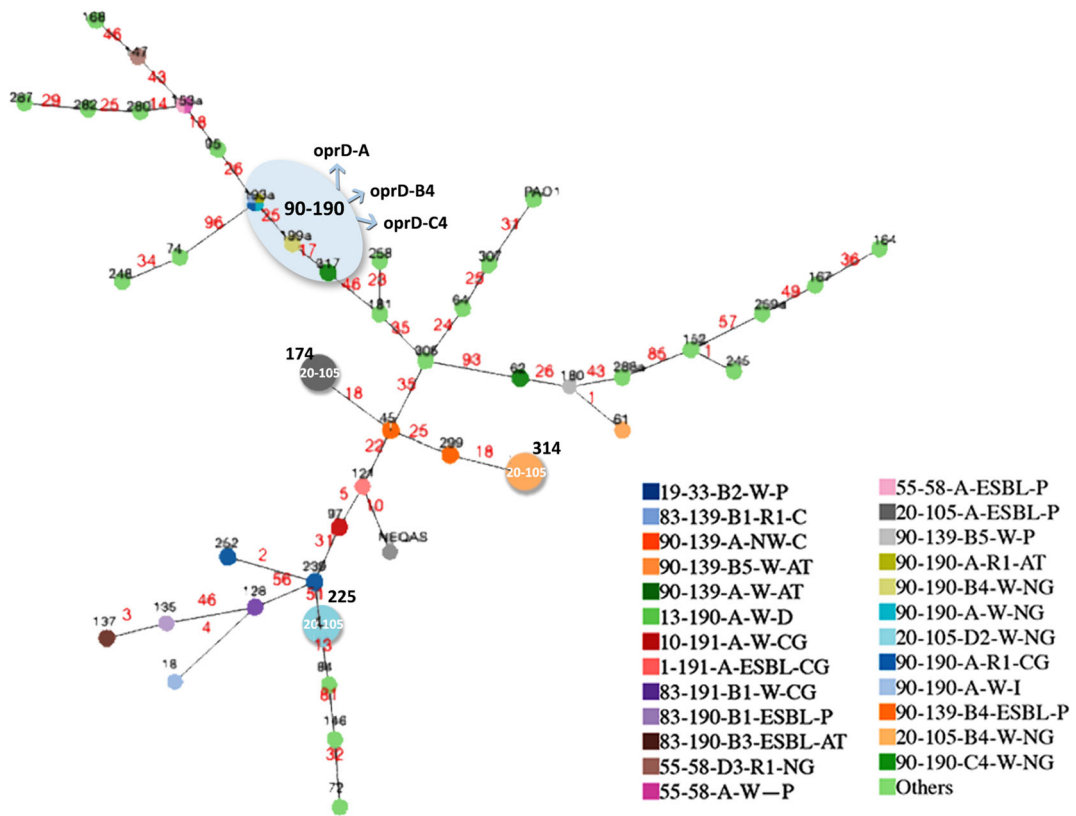
Discussion

To the best of our knowledge, this is the first time that an attempt has been made to elucidate the predominant *P. aeruginosa* clones in Greek aquatic environments using the new DLST scheme as proposed and combined with *oprD* typing. The study also sought to consider the distribution of the resistant phenotypes among the DLST types; the discriminatory power of the three typing schemes was calculated and evaluated. The fact that the resistant *P. aeruginosa* isolates in such diverse aquatic environments are shown at a proportion as high as 34% is considered worrying, and surveillance of such resistant isolates is needed [40]. At the selected population tested, the main intrinsic resistant mechanism observed was the R1 phenotype which corresponds to AmpC, partially/fully derepressed with resistance to aztreonam (Table S1); high resistance to ATM has been previously reported in environmental isolates deriving from soil [41] or from hospital wastewater treatment [42], but never in *P. aeruginosa* isolates deriving from aquatic ecosystems. The phenotypically ESBL and MBL-positive isolates did not produce positive results when tested molecularly, except in one isolate where the CTX-M group 9 β -lactamase was present; however, there is published information highlighting the emergence of ESBL genes in Greek aquatic environments [1]. *P. aeruginosa* porin D is a 443-amino-acid protein that facilitates the uptake of basic antibiotics, imipenem, and meropenem across the outer membrane [43]. It has been extensively reported that inactivation of porin D due to various mutations (premature stop codons, insertion/deletion, or disruption of sequences) leads to the development of resistance to imipenem and sometimes to meropenem and doripenem [18, 24, 43, 44]. Resistance to carbapenems can also arise from the production of MBLs, but it is not as common mechanism as the mutation-driven resistance [43]; nevertheless, it is possible

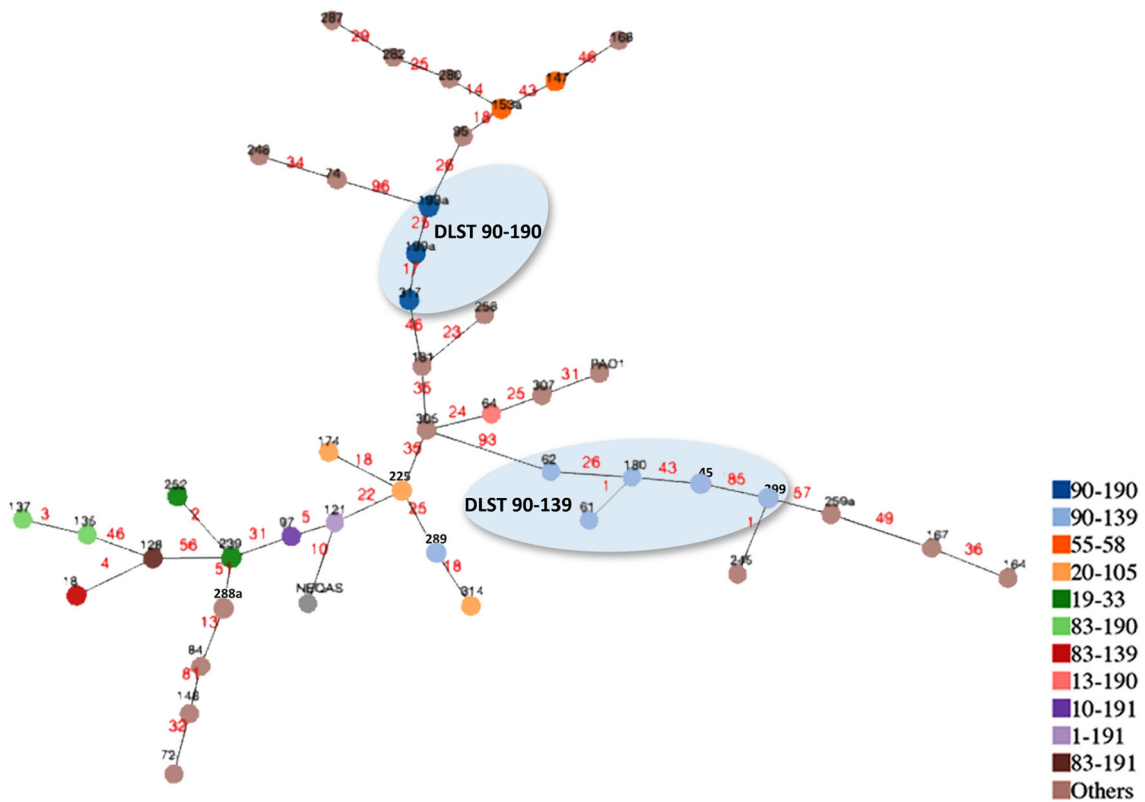
that both mechanisms may coexist in a population. In our strain collection, the six non-typeable isolates by *oprD* typing presented the R3 phenotype (loss of porin D, four isolates: 171, 172, 263, 289) and the production of MBLs (metallo- β -lactamases, two isolates: 266, 267) (Table S1). However, further studies are needed to detect modifications in the protein D and to evaluate the role of this porin in the carbapenem resistance in environmental *P. aeruginosa* isolates. The NCBI search revealed that the majority of the *oprD* sequences were highly conserved and identical to *P. aeruginosa* strain PA121617, which were present in wild-type isolates and in ESBL producers, as well. The group 4 *oprD* sequence was identical to *P. aeruginosa* strain MTB-1, a strain which was reported to co-exist with *Sphingomonas* spp. MM-1 in environments polluted by γ -HCH, an organic insecticide that has caused serious environmental problems including surface and groundwater in Greece [45, 46]. The fact that the group 4 *oprD* isolates derived from various habitats presenting wild-type and ESBL resistance phenotype (Table S1; Fig. 2a) requires further investigation including more water samples from the specific habitats and detailed sequencing of the *oprD* gene. Phylogenetic analysis was able to divide the initial nine *oprD* groups into 17 types distinguishing some isolates with various SNPs (Fig. 2b); however, it was characterized by low discriminatory power and congruence compared to DLST and when combined with the DLST at the DLST_n_*oprD* analysis (Table 1).

DLST is a new and promising typing scheme, which was proposed in order to conduct epidemiological studies at a local level with low cost in a short time. It has been proved that DLST produces stable results even when it is applied on isolates recovered during studies with durations of months or even years [12]. At the present study, the method was tested in 52 *P. aeruginosa* isolates recovered on a period of 3 years from various aquatic habitats of Greece representing a variety of resistant profiles. eBURST analysis of DLST data identified 14 DLST types and 15 singletons within 52 isolates indicating that *P. aeruginosa* is a non-clonal population undergoing significant recombination events which is consistent to a number of papers in the literature [5, 17, 21]. It was characterized by high discriminatory power, while two new *ms217* loci (190 and 191) were recognized and subjected to DLST database (Table S1, Fig. 2b). The majority of the isolates belonged to a few dominant clones widespread among resistant phenotypes such as DLST type 90-190 where wild-type, atm-resistant isolates and ESBL producers hold the same allelic profile or the types 1-191, 83-191, and 10-191 with the new allele *ms217*-191, which were present in two wild-type isolates and in the CTX-M group 9 isolate (Fig. 2b). The latter outcomes suggest that the circulation of acquired resistant mechanisms in these environments could be driven by their genetic profiles and

DLST_n_oprD



DLST



◀ **Fig. 4** Minimum sSpanning tree resulting from e-burst analysis of *Pseudomonas P. aeruginosa* isolates based on the DLST and the DLST_n_oprD data. The comparison of the two trees indicates the additional discrimination of the isolates to more genetic profiles phylogenetically unrelated (link distances are presented) and their distribution into the sampling sites and the resistant phenotypes. Abbreviations: Resistant phenotypes: wild-type W (WWild-type); susceptible to all antibiotics presenting no acquired resistance mechanism while the intrinsic mechanisms are not expressed; non-wild-type NW (NWNon-Wild-type); susceptible to all antibiotics except ticarcillin, ticarcillin + clavulanic acid, and cefotaxime; R1; AmpC, partially/fully derepressed with resistance to aztreonam; ESBL; Extended Spectrum β Beta-Lactamases. / Sampling sites: C.; Cyclades islands; AT.; Attica province; P.; Peloponnese county; NG.; Northern Greece; CG.; Central Greece; I.; Ionian islands; D.; Dodecanese islands; Others.; DLST and DLST_n_oprD types being present to the sampling sites in smaller numbers

is enhanced by the following results where the combination of the three genetic markers is presented.

To increase the discriminatory power of the DLST method, a third polymorphic marker such as *oprD* was used. The number of types and the discrimination was increased where the isolates were clustered into eight groups and 35 singletons (Fig. 4; Table 1). Although in Basset's et al. work [12], the *oprD* gene was removed from the final typing scheme, when *P. aeruginosa* environmental isolates are analyzed, the addition of a third locus is proved to be useful for confirming or rejecting a link between pairs of isolates. Genetically closely related isolates were distinguishable by one or more events in their *oprD* sequence (Fig. 4), while the distribution of the resistant mechanisms among various genetic profiles was more extent.

It has been previously stated that even a single polymorphism can influence the bacterium's fitness from a drug resistance point of view [21], while there is still a large number of intrinsic resistant mechanisms in *P. aeruginosa* genome that have not been described [5]. The results of the present study indicate that the variety of the DLST and DLST_n_oprD genetic profiles can act as a driving force in this extensive distribution of the resistant phenotypes in the aquatic sampling sites. This hypothesis certainly needs further study; perhaps, whole genome sequencing of some resistant isolates will provide significant information regarding the relationship of

the three genetic markers (*msl72*, *ms217*, and *oprD*) to the development and transmission of intrinsic and acquired resistant mechanisms.

Understanding the population structure and the genetic relatedness among *P. aeruginosa* strains present in natural habitats is crucial for gaining insight into the ecology and wide distribution of this bacterium. The development of a typing method which will provide reliable results in a short time at low cost is essential; papers in the literature have dealt with this issue widely [19, 24, 47]. In general, it is difficult to find the optimal genetic markers establishing a real phylogenetic history; ideally, SNPs that are relatively rare and scattered through the genome could be more informative compared to other markers [21]. However, it seems that combined sequence-based techniques support a polyphasic approach to reveal extensive variability in some genes or in a whole population [24]. In the present study, implementing a combination of the new DLST typing scheme to a typing method using a more stable genetic marker such as *oprD* was proved to be reliable and informative as recent events of transmission were distinguished and clusters of isolates belonging to the same clone were discriminated. The congruence calculations for the three typing schemes indicated that at least in the population tested, the DLST_n_oprD typing was more discriminatory than the DLST method. The dissemination of new mechanisms of resistance in a variety of environmental *P. aeruginosa* genetic profiles was observed with wild-type and resistant isolates presenting the same DLST and DLST_n_oprD types.

In two recently published studies regarding the typing of *P. aeruginosa* isolates recovered from the ICUs and the hospital environment, additional value on this novel typing scheme is added; the method is applied in a large bacterial population combined to whole genome sequencing for epidemiological purposes highlighting the epidemic DLST type in a short time [14, 15]; however, still there is not available any experimental work regarding exclusively aquatic *P. aeruginosa* isolates or isolates presenting significant antimicrobial resistance.

This work strongly suggests that the DLST scheme is valuable in typing a carefully chosen subpopulation of aquatic *P. aeruginosa* isolates, reducing significantly the time and the cost of the molecular analysis and providing a reliable

Table 1 Index of discrimination (Simpson's ID), adjusted Rand (AR), and adjusted Wallace (AW) coefficients between DLST, *oprD*, and DLST_n_oprD (95% CI)

	Simpson's ID	AR		AW		
		DLST	<i>oprD</i> typing	DLST	<i>oprD</i> typing	DLST_n_oprD
DLST	0.966				0.204 (0.000–0.423)	0.326 (0.140–0.511)
<i>oprD</i> typing	0.839	0.062 (0.000–0.157)		0.037 (0.000–0.100)		0.059 (0.000–0.120)
DLST_n_oprD	0.989	0.491 (0.230–0.780)	0.111 (0.000–0.211)	1.000 (1.000–1.000)	1.000 (1.000–1.000)	

phylogenetic study at a local level. The addition of the third loci (*oprD*) should be taken into consideration when the phylogenetic analysis is combined with epidemiological data such as antimicrobial sensitivity. These findings, hopefully, will have considerable impact on the study of the origin, the antimicrobial resistance, and the genetic characteristics of this well-established bacterium in the Greek aquifer.

Acknowledgements We are grateful to Dr. Georgia Mandilara, Dr. Panagiota Giakkoupi, and Dr. Kyriaki Tryfinopoulou for their support during the laboratory work and the staff of the Water Analysis Department, Central Public Health Laboratory, Hellenic Center for Disease Control and Prevention for providing the tested bacterial population. Special thanks are also due to Christos Grammatikos Statistical & Credit Risk Analyst from Statistical Decisions Hellas, to Dr. J.C. Davis for editing the text, and to E.D. Pappa for supporting the graphic designing of the images. This work was funded by the Greek State Scholarship Foundation (IKY), 41, Ethnikis Antistaseos Ave, PO Box 142 34, Nea Ionia, Athens, as part of Olga Pappa's doctoral scholarship entitled "IKY Fellowships of excellence for postgraduate studies in Greece-Siemens program."

References

- Pappa O, Vantarakis A, Galanis A, Vantarakis G, Mavridou A (2016) Antibiotic resistance profiles of *Pseudomonas aeruginosa* isolated from various Greek aquatic environments. *FEMS Microbiol. Ecol.* 92:fiw042
- Igbinsosa IH, Nwodo UU, Sosa A, Okoh A (2012) Commensal *Pseudomonas* species isolated from wastewater and freshwater milieus in the Eastern Cape Province, South Africa, as reservoir of antibiotic resistant determinants. *Int. J. Environ. Res. Public Health* 9:537–549
- Slekovec C, Plantin J, Cholley P, Thouverez M, Talon D, Bertrand X, Hocquet D (2012) Tracking down antibiotic-resistant *Pseudomonas aeruginosa* isolates in a wastewater network. *PLoS One* 7:e49300
- Bonomo RA, Szabo D (2006) Mechanisms of multidrug resistance in *Acinetobacter* species and *Pseudomonas aeruginosa*. *Clinic. Infect Dis* 43:49–56
- Stover CK, Pham XQ, Erwin AL, Mizoguchi SD, et al. (2000) Complete genome sequence of *Pseudomonas aeruginosa* PAO1, an opportunistic pathogen. *Nature* 406:959–964
- Mesaros N, Nordmann P, Plesiat P, Roussel-Delvallez M, et al. (2007) *Pseudomonas aeruginosa*: resistance and therapeutic options at the turn of the new millennium. *Clinic Microbiol Infect* 13:560–578
- Turton JF, Turton SE, Yearwood L, Yarde S, Kaufmann ME, Pitt TL (2010) Evaluation of a nine-locus variable-number tandem-repeat scheme for typing of *Pseudomonas aeruginosa*. *Clin. Microbiol. Infect.* 16:1111–1116
- Maltezou HC, Pappa O, Nikolopoulos G, Ftika LH, et al. (2012) Post-cataract surgery endophthalmitis outbreak caused by multidrug-resistant *Pseudomonas aeruginosa*. *Am. J. Infect. Control* 40:75–77
- Pappa O, Mandilara G, Vatopoulos A, Mavridou A (2013) Typing of *Pseudomonas aeruginosa* strains isolated from Greek water samples by three typing methods: serotyping, random amplified polymorphic DNA (RAPD) and pulsed field gel electrophoresis (PFGE). *Water Sci. Technol.* 67:1380–1388
- Curran B, Jonas D, Grundmann H, Pitt T, Dowson CG (2004) Development of a multilocus sequence typing scheme for the opportunistic pathogen *Pseudomonas aeruginosa*. *J. Clin. Microbiol.* 42:5644–5649
- van Mansfeld R, Willems R, Brimicombe R, Heijerman H, et al. (2009) *Pseudomonas aeruginosa* genotype prevalence in Dutch cystic fibrosis patients and age dependency of colonization by various *P. aeruginosa* sequence types. *J. Clin. Microbiol.* 47:4096–4101
- Basset P, Blanc DS (2014) Fast and simple epidemiological typing of *Pseudomonas aeruginosa* using the double-locus sequence typing (DLST) method. *Eur. J. Clin. Microbiol. Infect. Dis.* 33:927–932
- Cholley P, Stojanov M, Hocquet D, Thouverez M, Bertrand X, Blanc DS (2015) Comparison of double-locus sequence typing (DLST) and multilocus sequence typing (MLST) for the investigation of *Pseudomonas aeruginosa* populations. *Diagn. Microbiol. Infect. Dis.* 82:274–277
- Blanc DS, Gomes MB, Abdelbary M, Prodhom G, et al. (2016) Hand soap contamination by *Pseudomonas aeruginosa* in a tertiary care hospital: no evidence of impact on patients. *J Hosp Infect* 93: 63–67
- Tissot F, Blanc DS, Basset P, Zanetti G, et al. (2016) New genotyping method discovers sustained nosocomial *Pseudomonas aeruginosa* outbreak in an intensive care burn unit. *J Hosp Infect* 94:2–7
- Kidd TJ, Ritchie SR, Ramsay KA, Grimwood K, Bell SC, Rainey PB (2012) *Pseudomonas aeruginosa* exhibits frequent recombination, but only a limited association between genotype and ecological setting. *PLoS One* 7:e44199
- Cholley P, Ka R, Guyeux C, Thouverez M, et al. (2014) Population structure of clinical *Pseudomonas aeruginosa* from west and central African countries. *PLoS One* 9:e107008
- Esteva V, Rojo-Bezares B, Torres C, Saenz S (2014) Faecal carriage of *Pseudomonas aeruginosa* in healthy humans: antimicrobial susceptibility and global genetic lineages. *FEMS Microbiol. Ecol.* 89: 15–19
- Pérez-Losada M, Cabezas P, Castro-Nallar E, Crandall KA (2013) Pathogen typing in the genomics era: MLST and the future of molecular epidemiology. *Infect. Genet. Evol.* 16:38–53
- Khan NH, Ahsan M, Yoshizawa S, Hosoya S, Yokota A, Kogure K (2008) Multilocus sequence typing and phylogenetic analyses of *Pseudomonas aeruginosa* isolates from the ocean. *Appl. Environ. Microbiol.* 74:6194–6205
- Maatallah M, Cheriaa J, Backhrouf A, Iversen A, et al. (2011) Population structure of *Pseudomonas aeruginosa* from five Mediterranean countries: evidence for frequent recombination and epidemic occurrence of CC235. *PLoS One* 6:e25617
- Miranda CC, de Filippis I, Pinto LH, Coelho-Souza T, Bianco K, Cacci LC, Picao RC, Clementino MM (2015) Genotypic characteristics of multidrug-resistant *Pseudomonas aeruginosa* from hospital wastewater treatment plant in Rio de Janeiro, Brazil. *Appl. Environ. Microbiol.* 118:1276–1286
- Yan Y, Yao X, Li H, Zhou Z, Huang W, Stratton CW, CD L, Tang YW (2014) A novel *Pseudomonas aeruginosa* strain with an *oprD* mutation in relation to a nosocomial respiratory infection outbreak in an intensive care unit. *J. Clin. Microbiol.* 52:4388–4390
- Pimay JP, Bilocq F, Pot B, Cornelis P, et al. (2009) *Pseudomonas aeruginosa* population structure revisited. *PLoS One* 4:e7740
- Livermore DM (2002) Multiple mechanisms of antimicrobial resistance in *Pseudomonas aeruginosa*: our worst nightmare? *Clin. Infect. Dis.* 34:634–640
- Ranellou K, Kadlec K, Poulou A, Voulgari E, Vrioni G, Schwarz S, Tsakris A (2012) Detection of *Pseudomonas aeruginosa* isolates of the international clonal complex 11 carrying the blaPER-1

- extended-spectrum β -lactamase gene in Greece. *J. Antimicrob. Chemother.* 67:357–361
27. Giakkoupi P, Vourli S, Polemis M, Klapothaki V, Tzouveleki LS, Vatopoulos AC (2008) Supplementation of growth media with Zn²⁺ facilitates detection of VIM-2-producing *Pseudomonas aeruginosa*. *J. Clin. Microbiol.* 46:1568–1569
 28. Weldhagen GF, Poirel L, Nordmann P (2003) Ambler class A extended-spectrum β -lactamases in *Pseudomonas aeruginosa*: novel developments and clinical impact. *Antimicrob. Agents Chemother.* 47:2385–2392
 29. Castanheira M, Toleman MA, Jones RN, Schmidt FJ, Walsh TR (2004) Molecular characterization of a β -lactamase gene, blaGIM-1 encoding a new subclass of metallo- β -lactamase. *Antimicrob. Agents Chemother.* 48:4654–4661
 30. Lee K, Yum JH, Yong D, Lee HM, et al. (2005) Novel acquired metallo- β -lactamase gene, blaSIM-1, in a class 1 integron from *Acinetobacter baumannii* clinical isolates from Korea. *Antimicrob. Agents Chemother.* 49:4485–4491
 31. Woodford N, Fagan JE, Ellington JM (2006) Multiplex PCR for rapid detection of genes encoding CTX-M extended-spectrum β -lactamases. *J. Antimicrob. Chemother.* 57:154–155
 32. Libisch B, Poirel L, Lepsanovic Z, Mirovic V, et al. (2008) Identification of PER-1 extended-spectrum β -lactamase producing *Pseudomonas aeruginosa* clinical isolates of the international clonal complex CC11 from Hungary and Serbia. *FEMS Immunol. Med. Microbiol.* 54:330–338
 33. EuScape. Capacity Building Workshop ‘Train the Trainer’. NSPH/CPHL, KEELPNO 2013 <http://www2.keelpno.gr/blog/?p=4650&lang=en> (20 August 2016, date last accessed).
 34. Basset P, Senn L, Vogel V, Zanetti G, Blanc DS (2010) Diversity of staphylococcal cassette chromosome mec elements in predominant methicillin-resistant *Staphylococcus aureus* clones in a small geographic area. *J. Antimicrob. Chemother.* 54:4589–4595
 35. Francisco AP, Bugalho M, Ramirez M, Carriço AJ (2009) Global optimal eBURST analysis of multi locus typing data using a graphic matroid approach. *BMC Bioinformatics* 10:152
 36. Sakwinska O, Kuhn G, Balmelli C, Francioli P, et al. (2009) Genetic diversity and ecological success of *Staphylococcus aureus* strains colonizing humans. *Appl. Environ. Microbiol.* 75:175–183
 37. Stamatakis A (2014) RaxML version 8: a tool for phylogenetic analysis and post-analysis of large phylogenies. *Bioinformatics* 30:1312–1313
 38. Darriba D, Taboada GL, Doallo R, Posada D (2012) jModelTest 2: more models, new heuristics and parallel computing. *Nat. Methods* 9:772
 39. Carrico JA, Sabat AJ, Friedrich AW, Ramirez M, on behalf of the ESCMID Study Group for Epidemiological Markers (ESGEM) (2013) Bioinformatics in bacterial molecular epidemiology and public health: databases, tools and the next-generation sequencing revolution. *Euro Surveill* 18:20382
 40. Daverio E, Ghiani M, Bernasconi C (2004) Antibiotics and antibiotic-resistant bacteria into aquatic environment: a review. Institute for Environmental and Sustainability Inland and Marine Waters Unit (2004) <http://publications.jrc.ec.europa.eu/repository/bitstream/JRC28124/EUR%2021201%20EN.pdf> (20 August 2016, date last accessed).
 41. Pitondo-Silva A, Martins VV, Fernandes AFT, Stehling EGH (2014) High level of resistance to aztreonam and ticarcillin in *Pseudomonas aeruginosa* isolated from soil of different crops in Brazil. *Sci. Total Environ.* 473–474:155–158
 42. Santoro DO, Romao CM, Clementino MM (2012) Decreased aztreonam susceptibility among *Pseudomonas aeruginosa* isolates from hospital effluent treatment system and clinical samples. *Int. J. Environ. Health Res.* 22:560–570
 43. Ocampo-Sosa AA, Cabot G, Rodríguez C, Roman E, et al. (2012) Alterations of OprD in carbapenem-intermediate and -susceptible strains of *Pseudomonas aeruginosa* isolated from patients with bacteremia in a Spanish multicenter study. *Antimicrob. Agents Chemother.* 56:1703–1713
 44. Ikonomidis A, Tsakris A, Kantzanou M, Spanakis N, Maniatis AN, Poumaras S (2008) Efflux system overexpression and decreased OprD contribute to the carbapenem heterogeneity in *Pseudomonas aeruginosa*. *FEMS Microbiol. Lett.* 279:36–39
 45. Konstantinou IK, Hela DG, Albanis TA (2006) The status of pesticide pollution in surface waters (rivers and lakes) of Greece. Part I. Review on occurrence and levels. *Environ. Pollut.* 141:555–570
 46. Ohtsubo Y, Sato T, Kishida K, Tabata M, Ogura Y, Hayashi T, Tsuda M, Nagata Y (2014) Complete genome sequence of *Pseudomonas aeruginosa* MTB-1, isolated from a microbial community enriched by the technical formulation of hexachlorocyclohexane. *Genome Announc* 2:e01130–e01133
 47. Woo PC, Tsang AK, Wong AY, Chen H, Chu J, Lau SK, Yuen KY (2011) Analysis of multi locus sequence typing schemes for 35 different bacteria revealed that gene loci of 10 bacteria could be replaced to improve cost-effectiveness. *Diagn. Microbiol. Infect. Dis.* 70:316–323