

Independent Evolution of Heavy Metal-Associated Domains in Copper Chaperones and Copper-Transporting ATPases

I. King Jordan, Darren A. Natale, Eugene V. Koonin, Michael Y. Galperin

National Center for Biotechnology Information, National Library of Medicine, National Institutes of Health, Bethesda, MD 20894, USA

Received: 14 December 2000 / Accepted: 9 May 2001

Abstract. Copper chaperones are small cytoplasmic proteins that bind intracellular copper (Cu) and deliver it to Cu-dependent enzymes such as cytochrome oxidase, superoxide dismutase, and amine oxidase. Copper chaperones are similar in sequence and structure to the Cu-binding heavy metal-associated (HMA) domains of Cu-transporting ATPases (Cu-ATPases), and the genes for copper chaperones and Cu-ATPases are often located in the same operon. Phylogenetic analysis shows that Cu chaperones and HMA domains of Cu-ATPases represent ancient and distinct lineages that have evolved largely independently since their initial separation. Copper chaperone–Cu-ATPase operons appear to have evolved independently in different prokaryotic lineages, probably due to a strong selective pressure for coexpression of these genes.

Key words: P-type ATPases — Cation transport — Metalloenzyme — Copper poisoning — Wilson disease — Menkes disease — Mercury-binding protein

Introduction

Copper (Cu), like other transitional metals, is involved in a number of important redox reactions in the cellular energy metabolism. Cu-dependent enzymes, such as cytochrome oxidase (EC 1.9.3.1), superoxide dismutase

(EC 1.15.1.1), and amine oxidase (EC 1.4.3.6), are found in many organisms (McGuirl and Dooley 1999). However, Cu ions are toxic, and their cellular concentration has to be kept very low (Dameron and Harrison 1998; Rae et al. 1999). The task of sequestering intracellular copper and delivering it specifically to the Cu-dependent enzymes is accomplished by Cu chaperones, small cytoplasmic proteins that bind Cu ions with a $K_d < 10^{-20}$ M (Rae et al. 1999). Cu chaperones are similar in sequence and structure to the Cu-binding heavy metal-associated (HMA) domains of Cu-transporting ATPases (Cu-ATPases) whose genes are mutated in human Wilson and Menkes diseases (Bull et al. 1993; Solioz et al. 1994; Vulpe et al. 1993). Cu chaperones have been characterized in yeast, worm, and humans (Culotta et al. 1997; Harrison et al. 1999; Hung et al. 1998; Pufahl et al. 1997; Wakabayashi et al. 1998), where their activity has been studied as part of the efforts to better understand Cu metabolism aberrations in familial amyotrophic lateral sclerosis (Corson et al. 1998; Culotta et al. 1997). In bacteria, a Cu chaperone has been characterized in *Enterococcus hirae* (Cobine et al. 1999; Odermatt and Solioz 1995), and related mercury-binding proteins (HgBPs) have been identified in the periplasm of several bacteria harboring mercury-resistance plasmids (Bhriain and Foster 1986; Silver et al. 1989). A recent survey of the distribution of Cu chaperones in completely sequenced genomes showed that they are encoded by most free-living bacteria and some archaea (Jordan et al. 2000). The genes for Cu chaperones are usually clustered and presumably form operons with the genes that encode Cu-ATPases containing HMA domains at their N termini (Fagan and Saier, 1994; Silver, 1996; Rensing et al.

Correspondence to: Michael Y. Galperin; e-mail: galperin@ncbi.nlm.nih.gov

A

Copper chaperones and corresponding ATPases

YvgY_Bs (69)	1	MEQKTDQ EGNS CGHQVKATETS RGELDGG S AVH N ML ERAGKVD SFD ADKVS VK LD ADA ED QGGY DWAK	69	2635864
YvgX_Bs (803)	5	QKEIANQ SGNT CAACARRI ENGL KR MPG TDAN DL ATETS SN IYDPA BT GTAAL QEK IEK LG YHWVT	73	2635863
	74	-EK AE FD EGNT CAACARRI ENGL KR MPG TDAN DL ATETS SN IYDPA BT GTAAL QEK IEK LG YHWVT	131	2635863
YvgW_Bs (702)	3	L W K Q ET VD DGL DC SN CA RKI ENG TKG IK NG CA IN FA AST LT V S AD G KE EQ Q M V T M K V EN K V S I D PHV	71	2635862
Cj1162c (64)	1	---MK F K V K N D Q D Q W LI EM S L ED FG N IE VD L EQ K IL SL M LE EN Q ---V S N T K RE F Q DL GF E IVE	62	6968595
Cj1161c (699)	1	ME EL RI K I H IG HT CG NS CA RI ER GL KR MPG TDAN DL ATETS SN IYDPA BT GTAAL QEK IEK LG YHWVT	68	6968594
Cj1155c (785)	15	A Q M I E Y T RG K FP CG CS V W EL LES GL DE F Y E K L GN Q TL S P V N F Q ME--M N I Y DE PI T TK EG FS E Y	81	6968588
	82	-----L M I H G I E CA C W W L N E K I L T W Q B G L LE L D N H L N H K A R L V F D E Q S I S L V Q L RL L ES I G V E K A S A	143	6968588
DR2452 (68)	1	-M Q T EL N V T G M S CG H C V K A EG AL K AV P G EG V Q V S L EG G K AT Q G D A ---D A Q AL I AA L K E E G Y G A E V	65	6460267
DR2453 (843)	1	M K T L D L D IS G MT CA AC W GR VE R GL RR V EG Q EA HT N L A T ER AS V T Y D P AL T W AA AL V Q K L V D T G Y D AP T	69	6460273
	70	-A EL S F P P V AG M T CA AC W GR VE R AL N K T D G L D AS N L A T ER AS V R W L P AS V S P A E L K S A L V W AG Y D V PE	137	6460273
HI0292 (68)	1	M K T L I L N IG I H CG CC W K S L Q V L T EL DG Q S AD V Q LE -G K AN T F D EN R V N V A Q L IE V T ED AG F D A T E	68	1573260
HI0291 (68)	1	M K T L I L N IG I H CG CC W K N L Q V L T EL DG Q S AD V Q LE -G K AN T F D EN R V N V A Q L IE V T ED AG F D A T E	68	1573259
HI0290 (722)	9	S K K S I Q I Q G MT CG CS CA RI ER GL KR MPG TDAN DL ATETS SN IYDPA BT GTAAL QEK IEK LG YHWVT	74	2493017
HI1050 (92)	23	T K Q V L K V K EM Y Q L CA YL N K EL R N IG L I ST ES I K D GL V T V ED P-N UT W Q L F D A L K L P Y T A E V	90	1574083
HP1073 (66)	1	-M K A T F Q P S I T CG H C V D K IE K F AG SI EG S F ID S Y E K S V V E F D A -P A T Q D L I K E A L D AG Q E V W-	66	3121871
HP1072 (745)	1	-M K E S F Y L EG Y D CA CS SG I ERS L G R K S F Y K K I E S L L M K S A N T E F D EN Q T N L D E L F K L E K L G Y S P K	68	2314221
NMB1271 (70)	1	M E T L I L D EG M S CG G CV K S L T R I L EG V RG AS V S V S L EN K S A T V G Y D P A Q T D A G AL I EA V ED G Y D AA L	69	7226510
NMB1325 (720)	2	Q Q K ER F Q I EG M T CA AC AS RI ER GL KR MPG TDAN DL ATETS SN IYDPA BT GTAAL QEK IEK LG YHWVT	70	7226567
NMB1042 (823)	19	T V R EN ED RE T CC AG CC Q AV A Q S I D AG L G S Y Y Q R T A D A Q R TEL P P Q E I L D Q I R L V D L PE V Q S D F V ETH	87	7226281
	90	T R E AV I L GG IT CA AC W W L E B Q LL R T DG L V R ID L N Y S T H R CS V V M D D G K I R L S D L L L LR Q I G ST A AP	158	7226281
TM0320 (67)	1	-M R V V I V Y PD I S C N H C M R L SK A E EL -G K N V S L S E E K R V V E T E N ---L D S L L K K EE I D I P V ES	63	4980821
TM0317 (726)	16	E I K R T F T Y CG T CA CT K AK T ER A L E K L DG K F A N L A T ST CG F I V A E K -E IS F E E K K A W E V Q Y G V T T	83	4980818
Ssr2857_Sy (64)	1	-M T L Q L T V P T I A CA E CA E A V TK A Q N E D A Q AT V Q D L T S K K V T I T S A L---G E E Q L R T A I S A G H E V E -	64	1652317
sl11920_Sy (745)	3	Q T I N L Q I B CG RC CA AC AS S ES A I A K V PG Q S Q Q U N F A L E Q A V S V H G -E T T P Q L T D A VER A G Y H A R V	69	2493001
APB0009 (105)	29	Q E K L L G CG NS CG CA I A L ET A L K W W G L ID T H N S Y SR G S A L I V T F D D T L S I N D L EH I F K V P S N Y R	96	5103397
APB1454 (835)	3	L V K E R L S RG ME CA T GL T Y E K A L R S L PG W E AS SD P T W GRA V I A Y E PG S U R L S D W VA L R S T V G Y D W L	71	5105138
Aq_1840a (68)	1	M G E K E L K IQ GN TC Q H C V W T Y R A L SE V EG SE VE S L S EB G K A K Y L E K -E V P F E T L K E A T E T W G Y K V VE	68	-----
Aq_1445 (679)	1	-M R K A F K T Y CG NS CG W CA R A T E IT L K R T EG KN W S S F EL GR VE Y E F D ED L L S E E L W K K EE L G Y S W ER	68	2983833
UU202 (74)	1	M T W ML L T S SD L EG SS SN L V W LE K I -G Q N S L N I L NS E F A F E F E EN K I A D Q L I K E L N K NG F K T MI	70	6899168

Fig. 1. Alignment of heavy metal-associated domains encoded in the complete genomes. The proteins are listed under their names in complete genomes (left column) and their unique identifiers in the NCBI protein database (right column); the total sizes of the proteins are given in parentheses. The numbers at the left and right indicate the positions of the first and the last amino acid residues in the alignment. The names of the HMA domains from experimentally characterized proteins or with known 3D structures are in boldface. Conserved amino acid residues are shown in boldface. White letters on a black background indicate conserved Cys residues that are involved in metal binding. Light gray shading indicates conserved hydrophobic amino acid residues. The structural assignments are from the crystal structures of the HMA domains of the human Menkes protein [PDB code 1AW0 (Gitschier et al. 1998)]; yeast Cu chaperones ATX1 [PDB code 1CC7 (Rosenzweig et al. 1999)] and LYS7 [PDB code 1QUP (Lamb et al. 1999)], Cu chaperone CopZ from *Enterococcus hirae* [PDB code 1CPZ (Wimmer et al. 1999)], and the mercury-binding protein MerP from *Shigella flexneri* [PDB code 1AFI (Steele and Opella 1997)]; the cylinders indicate α -helices and the arrows indicate β -strands. The different lengths of the two MerP proteins refer to the mature and the unprocessed forms of the protein. Species name abbreviations are as follows: Bs, *Bacillus subtilis*; Cj, *Campylobacter jejuni*; DR, *Deinococcus radiodurans*; HI, *Haemophilus influenzae*; HP, *Helicobacter pylori*; NMB, *Neisseria meningitidis*; TM, *Thermotoga maritima*; Sy, *Synechocystis* sp.; APE, *Aeropyrum pernix*; Aq, *Aquifex aeolicus*; UU, *Ureaplasma urealyticum*; ENTHR, *Enterococcus hirae*; CAEEL, *Caenorhabditis elegans*; MTH, *Methanobacterium thermoautotrophicum*; Mtu, *Mycobacterium tuberculosis*; SHIFL, *Shigella flexneri*; PSEAE, *Pseudomonas aeruginosa*; STAAU, *Staphylococcus aureus*.

2000). As a result, the sequences coding for multiple HMA domains are often located next to each other (Jordan et al. 2000). While transcriptional coupling of the Cu chaperone and Cu-ATPase genes is biologically plausible, these (predicted) operons exhibit a surprising diversity of gene order and the number of consecutive HMA domains (Jordan et al. 2000).

Here we present an evolutionary analysis that supports the notion that Cu chaperones and HMA domains of Cu-ATPases represent ancient and distinct lineages that have evolved largely independently since their initial

radiation. Considered together with the genomic organization of the corresponding genes, these results suggest independent formation of Cu chaperone-Cu-ATPase operons in different phylogenetic lineages of prokaryotes, probably due to a strong selective pressure toward their coexpression.

Methods

The multiple alignment of the HMA domains of Cu chaperones and Cu-ATPases was constructed on the basis of a ClustalW (Higgins et al.

B

COPE_ENTHR (68)	1	-MKQEFSSRGGMSDHCVARLEAVGRISGFKKVKVQLKKERAVKFDDEANVQATEICQAINELGYQAEV	68	ICPEA
COPE_ENTHR (1727)	5	TKMETFWITGWTGANCASRIKELNEQPGMSATVNLATEKASVRYTD--TTTERLTKSVENIGYGAIL	71	290642
ATX1_YEAST (73)	3	EIKHYQFNWVMTCSGCSGADNKVLTKEPDSVK-IDIS-LEKQLVDVYVTTLPYDFLEKFKKTKGKEVRS	69	ICCT
LYS7_YEAST (1249)	5	DTYEATYALIPKPCENQWMDIKACLAVNVPGLNSLNFDEIQQIMSVSSV---APSTIINTFRNOGKDAII	70	IQUPA
ATU2_YEAST (1004)	1	MREVIILAHGNTCSACTMTIMTQLRALKGFTKCDISLVNTECQVTVLDM-EVTADSIKELIIEDOGFDCBI	68	728935
	79	TKEGLLSQGKTFSSCVSTTKQVEGIEGVESVWVSLVTESECHVYVPSKTTLETAREMIEDOGFDSNI	147	728935
CUC1_CAEEL (69)	1	-MTQYVVFEMGKTFONGCAMAARKVLGKL-GEDKIKRDDINWETKKTIVVTTDLPASDLELAKKTKGKEIKQ	67	4165309
CUAL_CAEEL (1238)	46	VQETMLERKGMTDNSOVKNIQDVIQAKPGTHSIQVNLKEENAKCSFDTRKWTAEKVAEAVDDMGFDCKV	114	9367167
	129	IRRLIVSIEGNTCHACVNNIQDTTQSKDGVVKKIVUSLEQKQGTDTVNSEKWNWGESVARSIDMGFDCKL	197	9367167
	249	LEKCTEATIEGNTCASCVQYTERNISKIEGTHSIUVALLAAKAEVITDGRVTSDDAIREMIEDOGFYKAT	317	9367167
ATOX_HUMAN (68)	1	MFKHEESVD-MTCGGCAEASVFLNKLGGKYDIDLPNKVKVCISESHSMDTLALTKKTKGTVSYLDGLE	68	4757804
CCS_HUMAN (274)	11	LCTEELFAVQ-MFCQSCVDANRNSLQGVAGVQDVEVHLEDQWVLTHTTL---PSQEQALLEGVGRQAVL	75	4826665
	129	LHWYQYGDLTINQNSCGMHPNPDGASHGGPQDSDRHRGDLGWRADADGRAIFRMEDEQLKVVWVIGRS	197	4826665
AT7B_HUMAN (1465)	57	VATSTVRLDGLTFCQSCVKSIEDRLSMLKGLISMKVSLQDSATVWVPSVWVCLQVCHQIGDMGFPEAST	125	1703455
	142	EAVWKLRYEGNTCQSCVSSIEGKVRKLGTVRVKVSLSNQRAVITYQPYLIQPFEDLRDGVNDMGFPEAAI	210	1703455
	256	VVTIQLRIRGMRCSVNLNIEENIQQLLGGVQSEIQVSLNKTAQVTVDPSCVSPVALQRATEALFPNGFK	324	1703455
	360	CSTLLIATAGMTCASVHSEIEGMSQLLEGVQQISVSLABGTATVLYWPSVISPEELRAATEDMGFPEASV	426	1703455
	487	PQRKFLRIRGNTCASVSNIEENLQKEAGVLSVNLVALLMAGKAEIKVDPVEVIQPLEIAQVFDLGFPEAAV	555	1703455
	563	DGNIELTITGHTCASVHSEISKLRTRTWGTYASVALATSKALVRFDPPEIIGPRDIKIKIEEIGFPHASL	631	1703455
Stand-alone copper-transport ATPases				
ATCU_ECOLI (834)	2	SQTIDITLDGLSCGGHVKRPKESLEQRPDVQADVSI--TEAKVTGTA---SABQLIETIKQAGYDASV	65	2493016
	98	DDSQQILLSGHSCASCNTRVQNALQSVPGVTDQARVNLAEARTALVMGSA---SPQDLVQAVEKAGYGAEA	163	2493016
MTH1535 (790)	1	MKRITIRIGMGCACALKEEALRHLDGRDAAVNLVBEKVSVEYDPRRVDLSDMEAAIEDAGYVTLN	69	2622654
	70	-ENIAMNMGHSCAMCQKTESALRGLGVSNAITMLAAEKAYISVNPVSLTSVEDLKRVTEDLGYTVRG	137	2622654
Rv0092_Mtu (761)	13	VQRQLRISGMSCSACAHFVSTLNLKLPVRAAVMFGFRVATIDTSEA--VDAALCQAVRRAGYQADL	79	1405763
Rv0103c_Mtu (752)	14	VRRRLDVLGMSCAACASRVETKLNKIPGTRASVNFATRVATIDAVGM---AADELQGVTEKAGYHAAP	79	1405774
Periplasmic mercury-binding proteins				
MERP_SHIFL (72)	2	TQVITLAMPGHTCAACPITMKKALSKVEGSKVDVGFKEKREAVVTFDDTKASVQRLTKATADAGYFSSV	70	IAFI
MERP_PSEAB (91)	21	TQVITLSPGHTCAACPITMKKALSKVEGSKVDVTFETRQAVVTFDDAKTSVQRLTKATEDAGYFSSV	89	127008
Mercuric reductase				
MERA_SHIFL (564)	1	--MSTLKTGHTGDSQAVHVKDALEKVPVQASADVSTAKGSAKLAIEV-GTSPDALTAAVAGLGYRAVL	66	126994
MERA_PSEAB (561)	1	--MTHLKTGHTGDSQAAHVKDALEKVPVQASALNSYPKGTAQLAIEV-GTSPDALTAAVAGLGYRAVL	66	126988
MERA_STAAU (547)	4	-NSYKIPVQHTGDTGCEEVTEALQA-GAKDWSADPRRGAIFELSD--DQIEKAKQMSAAGYQVPE	68	126995



Fig. 1. (continued)

1996) alignment and corrected according to the results of gapped BLAST (Altschul et al. 1997) comparisons and the HMA domain three-dimensional structure (Lamb et al. 1999, 2000). Phylogenetic trees based on this alignment (69 sites) were generated using both parsimony and distance-based methods. The maximum-parsimony method was employed using the PAUP* v4.0 (Swofford 1998) program. The full heuristic search option was used with tree-bisection-reconnection branch swapping and random stepwise addition (10 replicates) of sequences. The same search options were used to perform 100 bootstrap replicates. A permutation-tail probability (PTP) test (Archie 1989a, b; Faith 1990) (100 replicates) was performed using PAUP* v4.0 with the same search options as above. The neighbor-joining trees (Saitou and Nei 1987) were built using distances calculated with the Dayhoff PAM matrix as implemented in the PROTDIST and NEIGHBOR program of the PHYLIP package (Felsenstein 1996). The SEQBOOT program of PHYLIP was used to generate 1000 bootstrap replicates of the multiple alignment which were analyzed using the same program, and the majority-rule consensus tree was produced using the CONSENSE program.

Partially resolved trees (Fig. 4) that represent distinct hypotheses concerning HMA domain evolution used were generated using the MacClade v3.01 (Maddison and Maddison 1992) program. These trees were imported into PAUP* and used as topological (backbone) constraints for neighbor-joining searches, with the PAM distances described above, to generate two alternative hypothesis phylogenies. A

total of three phylogenies (1, the best neighbor-joining phylogeny; 2, hypothesis 1 phylogeny; and 3, hypothesis 2 phylogeny) were compared using three phylogenetic reconstruction methods: distance-based, parsimony, and maximum likelihood. The Fitch-Margoliash (1967) algorithm implemented in the DAMBE program (Xia 2000) was used to perform two distance-based tests, Bartlett's (Zar 1996) and Newman-Kuels (Zar 1996), comparing the three alternate topologies. Three parsimony-based tests implemented in PAUP* were also used to do so: the Kishino-Hasegawa (1989) test, Templeton (1983) (Wilcoxon signed-ranks) test, and winning-sites (sign) test (Prager and Wilson 1988). The TREEPUZZLE program (Strimmer and von Haeseler 1996) was used to compare the three alternate phylogenies using the Kishino-Hasegawa (1989) test based on maximum likelihood.

Neighbor-joining, parsimony, and maximum-likelihood methods were all used to reconstruct phylogenies based on alignments of Cu chaperone, Cu-ATPase HMA domain, and ATPase sequences of six operons (Fig. 2) that contain both Cu chaperones and Cu-ATPases. The results of the neighbor-joining analysis, implemented in PHYLIP and based on PAM distances as described above, are shown in Fig. 5. Phylogenetic comparisons between the Cu chaperone tree and the Cu-ATPase HMA domain tree were done using the same procedures described above for the entire data set.

Stem-loop structures were predicted using the GCG (Madison, WI) program StemLoop with default parameters. Six hundred bases, beginning with the start codon, were analyzed for each sequence.

Results

Stand-Alone HMA Domains as Cu Chaperones

Heavy metal-associated (HMA) domains in human Cu-ATPases (Wilson and Menkes disease proteins), yeast and human Cu chaperones for superoxide dismutase, and bacterial periplasmic mercury-binding proteins (HgBPs) show significant sequence and structural similarity as well as similar Cu-binding properties (Harrison et al. 1999; Harrison et al. 2000; Rosenzweig and O'Halloran 2000) (see Fig. 1). These domains consist of 65–70 amino acid residues that form a compact structure of two α -helices and four β -strands with conserved metal-binding Cys residues located between the first α -helix and the first β -strand (Gitschier et al. 1998; Lamb et al. 1999; Rosenzweig et al. 1999; Steele and Opelia 1997; Wimmer et al. 1999). The yeast Cu chaperone for superoxide dismutase, Lys7, has an additional domain that is apparently involved in its interaction with this enzyme (Eisses et al. 2000; Hall et al. 2000; Srinivasan et al. 1998). These observations indicate that stand-alone HMA domains are capable of sequestering and trafficking intracellular Cu. We therefore predict that all microbial stand-alone HMA domains are Cu chaperones; it remains to be determined if they deliver Cu to any enzyme other than Cu-ATPase.

Homology and Evolutionary History of the HMA Domains in Cu Chaperones and Cu-ATPases

The alignment of HMA domains from Cu chaperones, Cu-ATPases, and HgBPs (Fig. 1) shows absolute conservation of the two metal-binding Cys residues and good conservation of three glycine residues that are located at the end of the first β -strand and in the turns between the first α -helix and the second β -strand and between the second α -helix and the fourth β -strand, respectively (Lamb et al. 1999, 2000). Sequence and structure conservation of the HMA domains in Cu chaperones, Cu-ATPases, and HgBPs (Rosenzweig and O'Halloran 2000) clearly indicates that all these domains share a common ancestor. Given this homology, we sought to investigate, by means of phylogenetic analysis, how the HMA domains evolved in their disparate genic contexts (Table 1 and Fig. 2). Primarily, we wished to ascertain whether Cu chaperones represent a distinct evolutionary lineage separate from the HMA domains of Cu-ATPases. In addition, we addressed the question whether Cu chaperones and their corresponding coregulated Cu-ATPases have evolved as linked units.

Except for several conserved residues and the overall structural conservation, the HMA domain sequences from different organisms exhibit considerable variability (Fig. 1). This variability, together with the small size of the HMA domains, resulted in a low statistical support for most internal branches of the phylogenetic trees re-

constructed from the HMA alignment. Nevertheless, the general topology of the HMA phylogeny, which shows separate Cu chaperone and Cu-ATPase groups (Fig. 3), seemed to be best compatible with the notion that Cu chaperones and the HMA domains of Cu-ATPases represent distinct phylogenetic groups. Given the preponderance of low bootstrap values, we sought to ensure that the alignment did in fact contain some reliable phylogenetic signal. A permutation-tail probability test (Archie 1989a, b; Faith 1990) indicated that the HMA alignment does include a hierarchical structure ($P < 0.01$) which probably represents a phylogenetic signal.

Given the existence of hierarchical structure in the HMA alignment, comparisons of entire phylogenies (as opposed to individual branches) were used to test specific hypotheses concerning Cu chaperone and HMA domain evolution. Phylogenies that represented distinct evolutionary scenarios were generated using neighbor-joining searches with constraint trees (Fig. 4). The alternative phylogenies reflected two distinct hypotheses: (1) Cu chaperones represent a distinct evolutionary lineage separate from the HMA domains of Cu-ATPases, and (2) each Cu chaperone has evolved via a duplication of the adjacent HMA domain of a Cu-ATPase. Subsequent to phylogenetic reconstruction, the phylogenies corresponding to these alternative hypotheses were compared with the best overall neighbor-joining phylogeny using six tests based on three modes of phylogenetic reconstruction: distance based, parsimony, and maximum likelihood (Table 2). The hypothesis 1 tree was not significantly different from the best tree in five of six of these tests, and both these trees were consistent with the scenario whereby Cu chaperones and HMA domains of Cu-ATPases represent distinct and ancient evolutionary lineages. The phylogeny that corresponds to hypothesis 2 is the longest of the three trees. In all six of the tests employed, both the best tree and the hypothesis 1 tree were significantly shorter ($P < 0.05$) than the hypothesis 2 tree. Thus the phylogenetic signal that exists in the data appears to favor the hypothesis of an ancient radiation of Cu chaperones and the HMA domains of Cu-ATPases over the alternative hypothesis whereby Cu chaperone genes have repeatedly evolved via duplication of the HMA domain-encoding sequences in different lineages.

Having established that Cu chaperones and Cu-ATPases represent distinct and ancient evolutionary lineages, we sought to examine the subsequent evolution of the chaperone-ATPase operons. To this end, six operons (Fig. 2) that contain both Cu chaperones and Cu-ATPases were analyzed phylogenetically. Separate phylogenetic reconstructions were performed for Cu chaperones, HMA domains of Cu-ATPases, and the ATPase domains themselves, and the topologies of the resulting trees were compared (Fig. 5). If these operons have evolved as linked units from an ancestral proto-operon, then trees reconstructed from these three domains should be congruent. Trees reconstructed based on the HMA

Table 1. Copper-dependent proteins encoded in complete genomes

Organism ^a	Copper chaperones (stand-alone HMA domains) ^b	Cu-ATPases (No. of N-terminal HMA domains)	Total No. of encoded HMA domains	Copper-dependent enzymes ^c					
				Cu,Zn-superoxide dismutase	Heme/copper-type cytochrome oxidase subunits I and II		Multi-copper oxidases	Amine oxidase	Urate oxidase
Bacteria									
<i>Aquifex aeolicus</i>	aq_1840a ^d	aq_1445 (1)	2	aq_238 aq_1050	aq_2190 aq_2191 aq_2192	aq_1130	—	—	—
<i>Bacillus subtilis</i>	YvgY	YvgX (2) YvgW (1)	4	YojM	CtaC CtaD QoxA QoxB	CotA	—	—	YunL
<i>Campylobacter jejuni</i>	Cj1162c	Cj1161c (1) Cj1155c (2)	4	—	Cj1490c	Cj1516	—	—	—
<i>Deinococcus radiodurans</i>	DR2452^e	DR2453 (2) ^e	3	DR1546	DR2619 DR2620	—	—	DRB0101 ^f	DR1160
<i>Escherichia coli</i>	—	YbaR (2) ^g	2	SodC	CyoA CyoB	YacK SufI	TynA	—	—
<i>Haemophilus influenzae</i>	HI0292 HI0291 HI1050	HI0290 (1)	4	—	—	HI0733	—	—	—
<i>Helicobacter pylori</i>	HP1073	HP1072 (1)	2	—	HP0144	—	—	—	—
<i>Ureaplasma urealyticum</i> ^{g,h}	UU202^h	UU203^h (0)	1	—	—	—	—	—	—
<i>Mycobacterium tuberculosis</i>	—	Rv0092 (1) Rv0103c (1)	2	Rv0432	Rv3043c Rv2200c	Rv0846c	—	—	—
<i>Neisseria meningitidis</i>	NMB1271	NMB1325 (1)	2	NMB1398	NMB1725	NMB1623	—	—	—
<i>Rickettsia prowazekii</i>	—	—	0	—	RP405 RP406	—	—	—	—
<i>Synechocystis</i> sp.	ssr2857	sll1920 (1) slr0798 (1) slr1950 (1)	4	—	slr1136 slr1137 sll0813 slr2082	—	—	—	—
<i>Thermotoga maritima</i>	TM0320	TM0317 (1)	2	—	—	—	—	—	—
Archaea									
<i>Methanobacterium thermoautotrophicum</i>	—	MTH1535 (2)	2	—	—	—	—	—	—
<i>Archaeoglobus fulgidus</i>	AF0346	AF0473 (1+1) ⁱ	3	—	—	—	—	—	—
<i>Aeropyrum pernix</i>	APE0009	APE1454 (1)	2	—	APE0792 APE0793 APE1623 APE1720	—	—	—	—
Eukaryotes									
<i>Saccharomyces cerevisiae</i>	LYS7 ATX1	CCC2 (2) PCA1 (1)	5	SOD1	COX1 COX2	FET3 FET5 YDR506c	—	—	—
<i>Caenorhabditis elegans</i>	CUC-1 Y76A2A.3	CUA-1 (3)	5	C15F1.7 F55H2.1 ZK430.3	COX1 COX2	F21D5.3	—	—	—

^a Only organisms that have at least one copper-dependent protein are listed. We have not found Cu chaperones, Cu-ATPases, or any Cu-dependent enzymes encoded in the genomes of *Mycoplasma genitalium*, *Mycoplasma pneumoniae*, *Borrelia burgdorferi*, *Treponema pallidum*, *Chlamydia trachomatis*, *Chlamydia pneumoniae*, *Methanococcus jannaschii*, *Pyrococcus horikoshii*, and *Pyrococcus abyssi*.

^b Proteins are listed according to their gene names in the complete genome sequences, which can be used to retrieve the sequences from the NCBI protein database (<http://www.ncbi.nlm.nih.gov/Entrez/protein.html>). A dash indicates the absence of the corresponding gene in the complete genome, based on protein sequence comparisons using the Clusters of Orthologous Groups (<http://www.ncbi.nlm.nih.gov/COG>) approach. This does not necessarily mean the absence of the corresponding function, which might be carried out by a nonorthologous protein, e.g., Fe,Mn-dependent superoxide dismutase. See Koonin et al. (1998) and Tatusov et al. (1997, 2000) for more details. Cu chaperones and Cu-ATPases that are encoded by adjacent genes, presumed to comprise an operon, are in boldface.

^c Only the Cu-dependent enzymes, commonly found in microbial ge-

nomes, are listed. Lysyl oxidase, tyrosinase, laccase, or ceruloplasmin homologues have not been found in any sequenced prokaryotic genomes.

^d The Cu chaperone gene aq_1840a was missed in the original annotation of the *Aquifex aeolicus* genome but recognized in the course of COG-based analysis, as described previously (Natale et al. 2000).

^e DR2452 and DR2453 genes are located on opposing DNA strands and apparently form a divergent operon (see Fig. 2).

^f This gene is frameshifted; the corresponding protein may not be expressed in an active form.

^g YbaR has recently been experimentally characterized and renamed CopA (Rensing et al. 2000).

^h *Ureaplasma urealyticum* genome encodes a Cu chaperone (UU202), but the adjacent P-type ATPase (UU203) lacks an HMA domain; this could be either a sequencing artifact or an indication of specific interaction between UU202 and UU203 (see text for more details).

ⁱ Predicted Cu-ATPase AF0473 contains an HMA domain at its N terminus and another one at its C terminus.

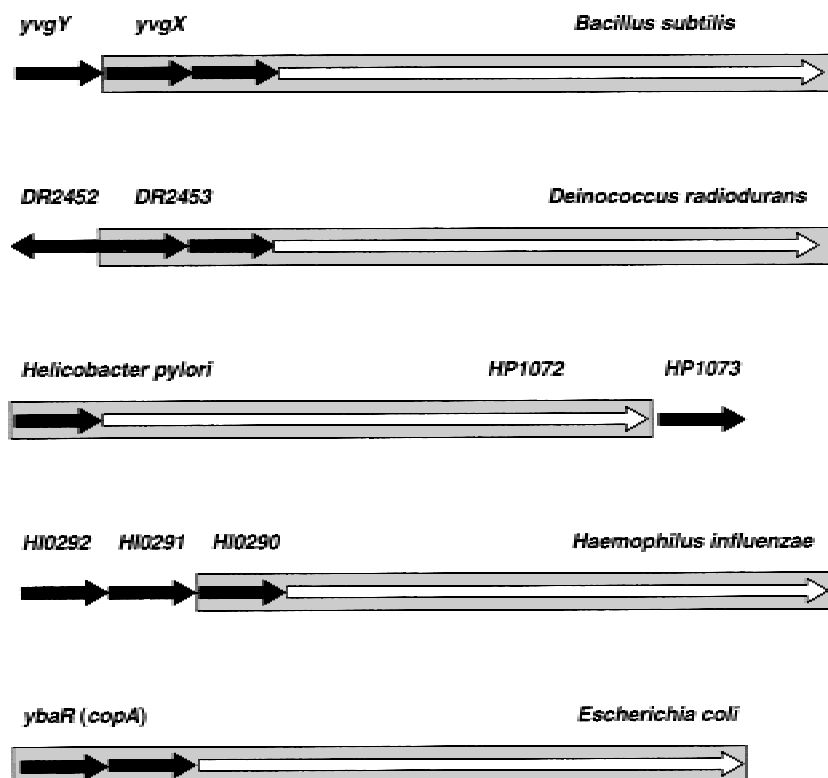


Fig. 2. Operon organization of HMA domains in Cu chaperones and Cu-transporting ATPases. The heavy metal-associated (HMA) domains are indicated by *short black arrows*; the ATPase domains are indicated by *white arrows*. The complete sequences of Cu-transporting ATPases including HMA and ATPase domains are *boxed*.

domains of Cu-ATPases and the ATPases domains were essentially identical, with the exception of one short internal branch that was not well supported (Fig. 5, top). This indicates, not unexpectedly, that the HMA and ATPase domains of Cu-ATPases encoded by the same gene have evolved as a single unit. In contrast, the topology of the Cu chaperone tree differed from those of the Cu-ATPase trees (Fig. 5, bottom). For example, bootstrap-supported association of the Cu chaperones from *H. pylori* and *T. maritima* was not observed among the corresponding Cu-ATPases. Instead, the Cu-ATPase HMA domain from *H. pylori* consistently grouped with the Cu-ATPase HMA domain from *H. influenzae* (Fig. 5, bottom). Whole-tree comparison was also employed here to test further the differences between trees. Again, six tests based on three phylogenetic reconstruction methods were used to compare the Cu chaperone tree with the Cu-ATPase HMA-domain tree. Each test indicated statistically significant differences between the two topologies (Table 3). Thus, the evolutionary history of Cu chaperones appears to differ from that of their adjacent Cu-ATPases, which seems to support the counter-intuitive hypothesis of de novo formation of chaperone-ATPase operons.

Discussion

Co-Occurrence of Cu Chaperones and Cu-Dependent Enzymes

In eukaryotes, the principal function of Cu chaperones is to deliver Cu to copper-dependent enzymes, such as

Cu,Zn-dependent superoxide dismutase, cytochrome oxidase, and tyrosinase (Harrison et al. 1999, 2000; Rosenzweig and O'Halloran 2000). Their role in Cu detoxification seems to be minor, if any; this function is performed by metallothioneins (Dameron and Harrison 1998). In bacteria, the only experimentally characterized Cu chaperone, CopZ from *Enterococcus hirae*, has been implicated in maintaining copper homeostasis in the cell (Cobine et al. 1999; Harrison et al. 1999, 2000). A comparison of the repertoires of Cu-binding proteins encoded in each of the complete genomes shows that, as a rule, Cu chaperones are encoded only in those genomes that also encode a Cu-ATPase and at least one Cu-dependent enzyme (Table 1). The only exception seems to be *Ureaplasma urealyticum* that encodes a Cu chaperone (UU202) but no other Cu-binding proteins (Table 1). In fact, the next *U. urealyticum* gene (UU203) is in frame with UU202 and encodes a P-type ATPase that is very similar to Cu-ATPases but lacks an HMA domain. Phylogenetic analysis shows that UU202 clusters with HMA domains of Cu-ATPases, not with Cu chaperones (Fig. 3). Thus UU202 is, in effect, an ATPase HMA domain that has been separated from the rest of the ATPase gene due to a genuine nonsense mutation or a sequencing error.

Two more exceptions of the general rule, *E. coli* and *M. tuberculosis*, each encode Cu,Zn-type superoxide dismutases and heme copper-type quinol oxidases but lack a dedicated Cu chaperone gene (Table 1). The *E. coli* Cu-ATPase contains two tandem HMA domains, and the N-terminal one has been identified in *E. coli* protein ex-

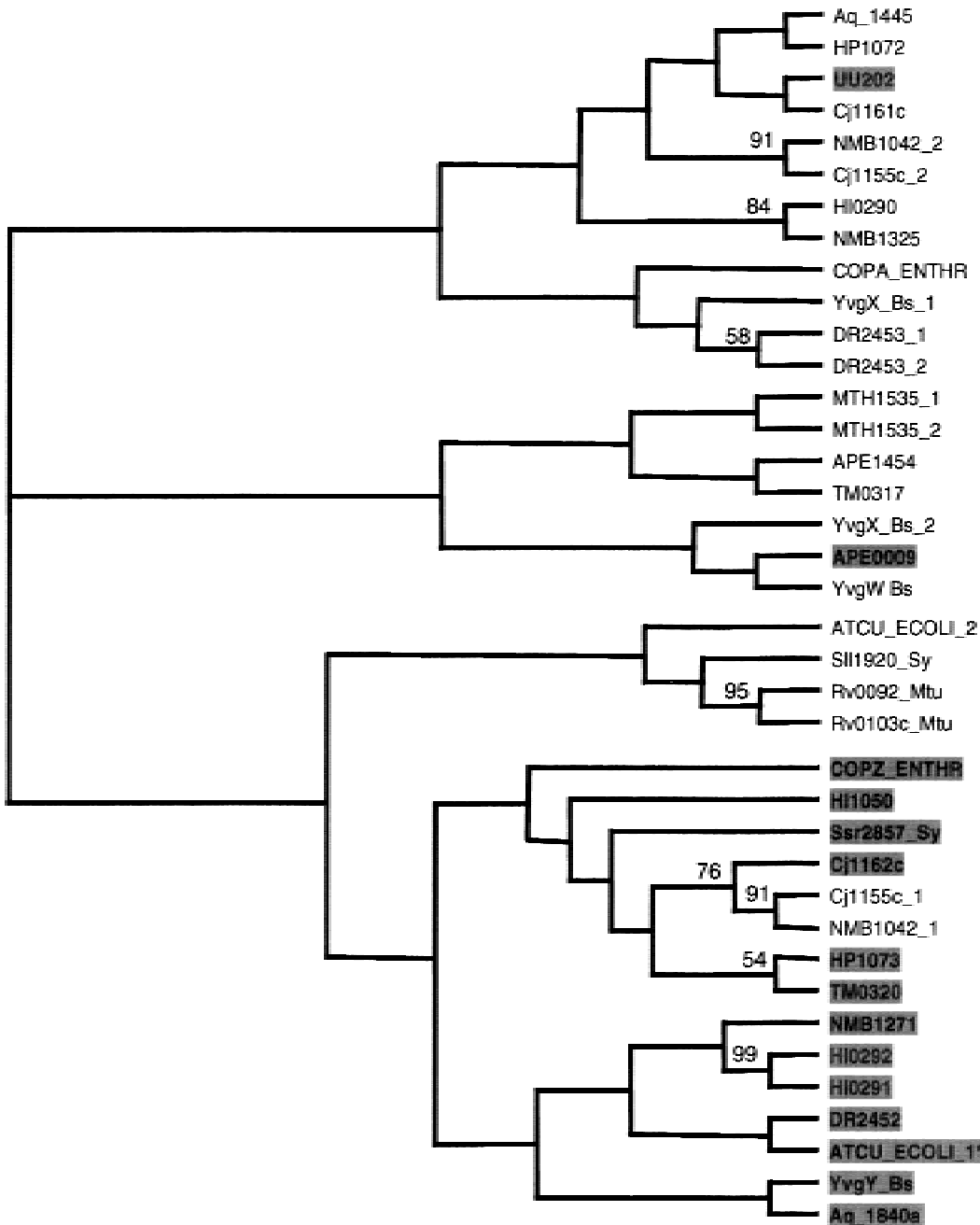


Fig. 3. Neighbor-joining phylogenetic tree of the HMA domains in Cu chaperones and Cu-transporting ATPases. The designations of the HMA domain-containing proteins are as in Fig. 1. Consecutive HMA domains from a single protein are indicated as _1 or _2, starting from the N-terminal domain. Names of stand-alone HMA domains (Cu chaperones) are shaded. The *E. coli* N-terminal HMA domain, discussed in the text, is labeled with an asterisk. Bootstrap values >50% are shown.

tracts as a separate protein (Wasinger and Humphery-Smith 1998), suggesting that, in this bacterium, a Cu chaperone might be generated by proteolytic cleavage of the Cu-ATPase (Jordan et al. 2000). Alternatively, it could be formed by an early termination of transcription (or translation) of the Cu-ATPase gene. This second possibility, however, appears less likely because the region of the *copA* gene that separates the two HMA domains does not seem to form any strong stem-loop structures (data not shown). The phylogenetic data placed the N-

terminal HMA domain of the *E. coli* Cu-ATPase among the Cu chaperones (Fig. 3), suggesting a relatively late fusion of this domain with an ancestral, single-HMA domain-containing ATPase. Sequence analysis of unfinished bacterial genomes showed the same organization of the Cu-ATPase gene in other members of *Enterobacteriaceae*, but not in all γ -proteobacteria (not shown), indicating that this fusion could be specific for the enterobacterial lineage.

A similar mechanism could have emerged in *Myc-*

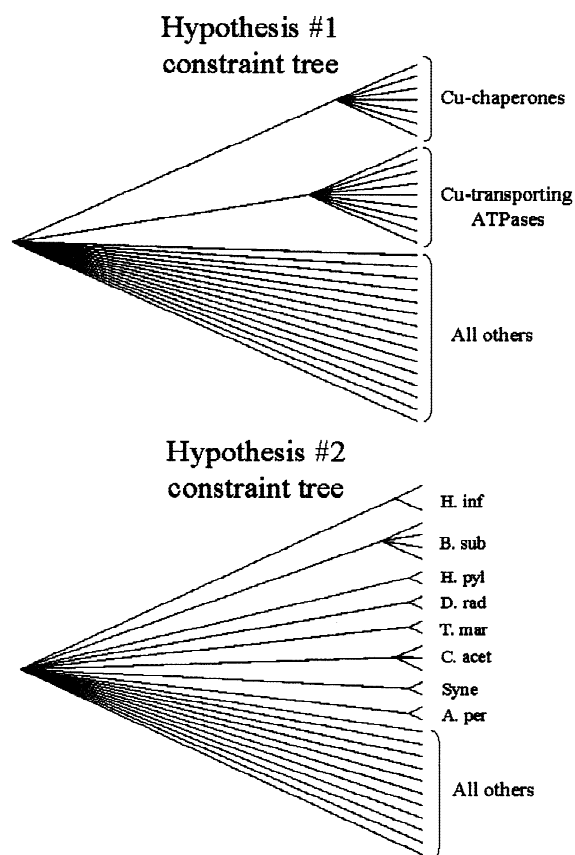


Fig. 4. Unresolved topologies corresponding to hypothesis-specific constraint trees. Hypothesis 1 holds that Cu chaperones represent a distinct evolutionary lineage separate from the HMA domains of Cu-ATPases. Hypothesis 2 holds that each Cu chaperone has evolved via a duplication of the adjacent HMA domain of a Cu-ATPase.

bacterium tuberculosis. This organism encodes at least three Cu-dependent enzymes, superoxide dismutase (Wu et al. 1998), cytochrome oxidase, and a multicopper-type oxidase (Table 1), and would be expected to need a Cu chaperone. Nevertheless, a dedicated Cu chaperone-encoding gene is apparently missing in the *M. tuberculosis* genome. Moreover, both Cu-ATPases of *M. tuberculosis*, Rv0092 and Rv0103c, contain only one N-terminal HMA domain. As a result, generation of a Cu chaperone by proteolytic digestion of a Cu-ATPase seems unlikely because this would result in the formation of a solo ATPase domain without an HMA domain. A Cu chaperone formation via premature termination of transcription (or translation) in a Cu-ATPase gene(s) does not seem to be particularly plausible either due to the lack of predicted stem-loop structures in either Rv0092 or Rv0103c genes (data not shown). The mechanisms of copper homeostasis in *M. tuberculosis* warrant further investigation, particularly because the most commonly used antituberculin drugs, isoniazid and ethambutol, are both efficient copper chelators (Bottari et al. 2000; Hanson et al. 1981; Kozak et al. 1998).

Finally, *R. prowazekii* represents the only exception of a different kind, where the presence of the heme cop-

Table 2. Statistical comparisons of the best neighbor-joining (NJ) tree with the hypothesis 1 (Hyp 1) tree and hypothesis 2 (Hyp 2) tree^a

Distance based: Bartlett's test					
Tree	Length	Variance	<i>F</i>	<i>P</i> ^b	
NJ	20.52578	0.01514	1.076	0.1670	
Hyp 1	20.79250	0.01407	Best		
Hyp 2	22.82852	0.02372	1.686	0.0000	
Distance based: Student–Newman–Keuls test					
Tree comparison	Diff. log (var.)	<i>q</i>		<i>P</i> ^b	
NJ vs Hyp 1	0.07302	1.3558		0.3367	
NJ vs Hyp 2	0.44912	8.3269		<0.001	
Hyp 1 vs Hyp 2	0.52214	9.6912		<0.001	
Parsimony based: Kishino–Hasegawa test					
Tree	Length	Diff.	SD	<i>t</i>	<i>P</i> ^b
NJ	1203	Best			
Hyp 1	1221	18	9.93656	1.8115	0.0745
Hyp 2	1303	100	15.83369	6.3156	<0.0001
Parsimony based: Templeton (Wilcoxon signed-ranks) test					
Tree	Length	Rank sums	<i>Z</i>	<i>P</i> ^b	
NJ	1203	Best			
Hyp 1	1221	700.5 (–427.5)	1.5072	0.1318	
Hyp 2	1303	1254.5 (–123.5)	5.1986	<0.0001	
Parsimony based: Winning-sites test					
Tree	Length	Counts		<i>P</i> ^b	
NJ	1203	Best			
Hyp 1	1221	32 (–15)		0.0196	
Hyp 2	1303	44 (–8)		<0.0001	
Maximum likelihood based: Kishino–Hasegawa test					
Tree	Log likelihood	Diff.	SE	<i>P</i> ^b	
NJ	–5166.74	Best			
Hyp 1	–5184.07	17.33	14.37	>0.05	
Hyp 2	–5348.69	181.95	39.43	<0.05	

^a Details of statistical tree comparisons are described under Methods.

^b Approximate probability of getting a more extreme test statistic under the null hypothesis of no difference between the trees (best vs other) being compared.

per-type cytochrome oxidase *aa₃* is not accompanied by the presence of either a Cu chaperone or a Cu-ATPase (Table 1). Because *R. prowazekii* is an intracellular parasite, it can be speculated that Cu delivery to its cytochrome oxidase is performed by the Cu chaperone(s) of the host cell, probably in the same way that Cox17 delivers Cu to the mitochondrial cytochrome oxidase (Srinivasan et al. 1998).

Cu Chaperones and Cu-ATPases Are Coexpressed But Have Not Coevolved

Phylogenetic analysis shows that HMA domains of Cu chaperones and Cu-ATPases evolved independently of

Table 3. Statistical comparisons of the copper chaperone tree with the copper transporter HMA-domain tree^a

Distance based: Bartlett's test					
Tree	Length	Variance	<i>F</i>	<i>P</i> ^b	
Chaperone	2.92205	0.00790	Best		
HMA	3.03620	0.02902	3.672	0.0130	
Distance based: Student–Newman–Keuls test					
Tree	Length	Variance	Diff. log (var.)	<i>q</i>	<i>P</i> ^b
Chaperone	2.92205	0.00790	Best		
HMA	3.03620	0.02902	1.30066	3.1860	0.0243
Parsimony based: Kishino–Hasegawa test					
Tree	Length	Diff.	SD	<i>t</i>	<i>P</i> ^b
Chaperone	163	Best			
HMA	175	12	4.71543	2.5448	0.0132
Parsimony based: Templeton (Wilcoxon signed-ranks) test					
Tree	Length	Rank sums	<i>Z</i>	<i>P</i> ^b	
Chaperone	163	Best			
HMA	175	137 (–34)	2.4493	0.0143	
Parsimony based: Winning-sites test					
Tree	Length	Counts	<i>P</i> ^b		
Chaperone	163	Best			
HMA	175	14 (–4)	0.0309		
Maximum-likelihood based: Kishino–Hasegawa test					
Tree	Log likelihood	Diff.	SE	<i>P</i> ^b	
Chaperone	–866.31	Best			
HMA	–883.46	17.15	8.74	<0.05	

^a Details of statistical tree comparisons are described under Methods.

^b Approximate probability of getting a more extreme test statistic under the null hypothesis of no difference between the trees (best vs other) being compared.

each other, rather than as a single unit (Figs. 3 and 4 and Tables 2 and 3). Given the extensive rearrangement that is characteristic of prokaryotic genomes (Mushegian and Koonin 1996; Dandekar et al. 1998; Itoh et al. 1999), this evolutionary scenario would be expected to result in a random scatter of the chaperones and ATPases on prokaryotic chromosomes unless coexpression of these genes is selected for. While the Cu chaperone and Cu-ATPase genes are indeed located separately in several genomes, in many bacteria they seem to form operons, indicating that the two genes are coexpressed and, by inference, functionally linked (Fig. 2). Coexpression of these proteins has been reported in *C. elegans* (Wakabayashi et al. 1998), where their genes are not adjacent. In *E. hirae*, localization of a Cu chaperone and a Cu-ATPase in the same operon was attributed to their joint participation in maintaining Cu homeostasis in the cell (Cobine et al. 1999; Odermatt et al. 1992, 1994;

Wunderli-Ye and Solioz 1999). We now know that, at least in yeast cells, all Cu is chaperone-bound and the concentration of free Cu in the cytoplasm is virtually nil (Rae et al. 1999). This probably means that the functions of Cu chaperones in Cu resistance and Cu delivery are tightly linked. Under normal conditions, when extracellular Cu levels are very low, Cu-ATPases and Cu chaperones ensure Cu uptake and its delivery to Cu-dependent enzymes, respectively (Table 1). Under the conditions of excessive Cu levels, these same Cu-ATPases and Cu chaperones ensure Cu binding in the cytoplasm and its extrusion from the cell. Such a system for maintaining Cu homeostasis might involve two different Cu-ATPases for Cu uptake and extrusion. Indeed, several microbial genomes encode a single Cu chaperone and two or more Cu-ATPases (Table 1).

The juxtaposition of the Cu chaperone and Cu-ATPase in the same operon would ordinarily suggest that such operons are descendants of an ancestral operon whose gene organization had been maintained by selection. However, phylogenetic analysis fails to show congruent evolution of chaperones and ATPases, which seems to suggest that the same operonic arrangement has evolved repeatedly in different phylogenetic lineages. Operon disruption and shuffling are common in prokaryotic evolution (Itoh et al. 1999), but independent formation of the same operon in different genomes, to our knowledge, has not been documented so far. Horizontal gene transfer is widespread in prokaryotes (Doolittle 1999). Given the scattered phyletic distribution of HMA domains and the presence of several unexpected groupings in the phylogenetic tree (Fig. 3), it is a distinct possibility that horizontal transfer has contributed to the observed distribution of HMA encoding genes. However, the low bootstrap values for individual branches on the HMA tree does not allow us to provide strong support for this scenario.

HMA Domains in Mercury Resistance

One instance where the function of the HMA domain is firmly established is its involvement in mercury detoxification. This system has been extensively studied, and the function of periplasmic mercury-binding proteins (HgBPs) in delivering Hg²⁺ to the cytoplasm is well established (Lund and Brown 1987; Silver et al. 1989; Silver and Phung 1996). The presence of the HMA domains in mercury reductases, however, remains unexplained because deletion of an HMA domain was found to have no effect on the reduction of Hg²⁺ to Hg⁰ (Schiering et al. 1991). Phylogenetic analysis of the HMA domains in both HgBPs and Hg reductases shows that these domains, while closely related to ones in Cu chaperones and Cu-ATPases, form a separate well-defined branch (data not shown). It appears that HgBPs have evolved from the ancestral HMA domains by pick-

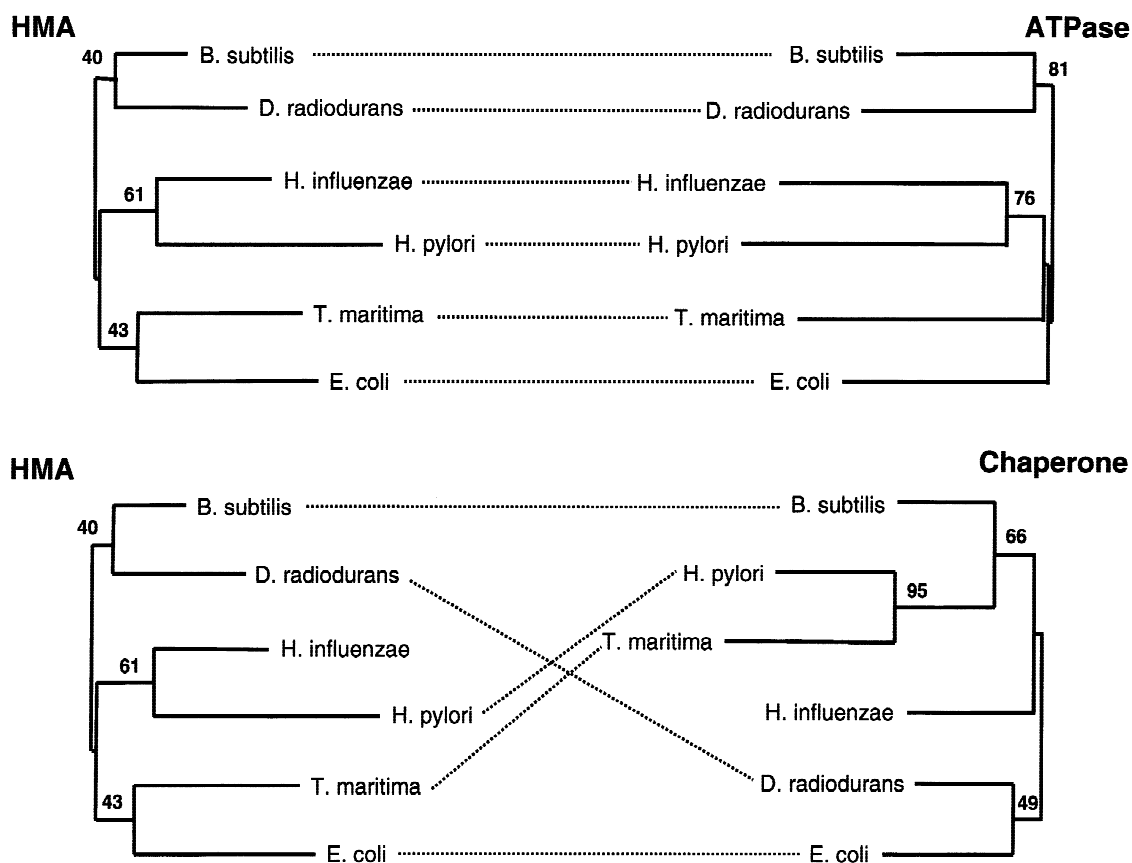


Fig. 5. A comparison of the topologies of neighbor-joining phylogenetic trees of the Cu chaperones and Cu-transporting ATPases. **Top:** A comparison of the trees for the N-terminal HMA domains and non-HMA portions of Cu-transporting ATPases. For Cu-transporting ATPases from *B. subtilis* and *D. radiodurans*, only the N-terminal domains BS_YvgX_1 and DR2453_1 were used in the HMA tree. For the Cu-transporting ATPase YbaR (CopA) from *E. coli*, the N-terminal HMA domain ATCU_ECOLI_1 was used in the chaperone tree, whereas the second HMA domain ATCU_ECOLI_2 was used in HMA tree. See text for a discussion of the mechanism of Cu chaperone formation in *E. coli*. **Bottom:** A comparison of the trees for HMA domains of Cu-transporting ATPases and their adjacent Cu chaperones. Bootstrap values >40% are shown.

ing up N-terminal signal sequences that allowed their export into periplasm (Fig. 1).

References

- Altschul SF, Madden TL, Schaffer AA, Zhang J, Zheng Z, Miller W, Lipman DJ (1997) Gapped BLAST and PSI-BLAST—A new generation of protein database search programs. *Nucleic Acids Res* 25:3389–3402
- Archie JW (1989a) Phylogenies of plant families: A demonstration of phylogenetic randomness in DNA sequence data derived from proteins. *Evolution* 43:1796–1800
- Archie JW (1989b) A randomization test for phylogenetic information in systematic data. *Syst Zool* 38:239–252
- Bhriain NN, Foster TJ (1986) Polypeptides specified by the mercuric resistance (*mer*) operon of plasmid R100. *Gene* 42:323–330
- Bottari B, Maccari R, Monforte F, Ottana R, Rotondo E, Vigorita MG (2000) Isoniazid-related copper(II) and nickel(II) complexes with antimycobacterial in vitro activity. Part 9. *Bioorg Med Chem Lett* 10:657–660
- Bull PC, Thomas GR, Rommens JM, Forbes JR, Cox DW (1993) The Wilson disease gene is a putative copper transporting P-type ATPase similar to the Menkes gene. *Nature Genet* 5:327–337
- Cobine P, Wickramasinghe WA, Harrison MD, Weber T, Solioz M, Dameron CT (1999) The *Enterococcus hirae* copper chaperone CopZ delivers copper(I) to the CopY repressor. *FEBS Lett* 445:27–30
- Corson LB, Strain JJ, Culotta VC, Cleveland DW (1998) Chaperone-facilitated copper binding is a property common to several classes of familial amyotrophic lateral sclerosis-linked superoxide dismutase mutants. *Proc Natl Acad Sci USA* 95:6361–6366
- Culotta VC, Klomp LW, Strain J, Casareno RL, Krems B, Gitlin JD (1997) The copper chaperone for superoxide dismutase. *J Biol Chem* 272:23469–23472
- Dameron CT, Harrison MD (1998) Mechanisms for protection against copper toxicity. *Am J Clin Nutr* 67:1091S–1097S
- Dandekar T, Snel B, Huynen M, Bork P (1998) Conservation of gene order: A fingerprint of proteins that physically interact. *Trends Biochem Sci* 23:324–328
- Doolittle WF (1999) Phylogenetic classification and the universal tree. *Science* 284:2124–2129
- Eisses JF, Stasser JP, Ralle M, Kaplan JH, Blackburn NJ (2000) Domains I and III of the human copper chaperone for superoxide dismutase interact via a cysteine-bridged dicopper(I) cluster. *Biochemistry* 39:7337–7342
- Fagan MJ, Saier MH, Jr. (1994) P-type ATPases of eukaryotes and bacteria: Sequence analyses and construction of phylogenetic trees. *J Mol Evol* 38:57–99.
- Faith DP (1990) Chance marsupial relationships. *Nature* 345:393–394
- Felsenstein J (1996) Inferring phylogenies from protein sequences by

- parsimony, distance, and likelihood methods. *Methods Enzymol* 266:418–427
- Fitch WM, Margoliash E (1967) Construction of phylogenetic trees. *Science* 155:279–284
- Gitschier J, Moffat B, Reilly D, Wood WI, Fairbrother WJ (1998) Solution structure of the fourth metal-binding domain from the Menkes copper-transporting ATPase. *Nat Struct Biol* 5:47–54
- Hall LT, Sanchez RJ, Holloway SP, Zhu H, Stine JE, Lyons TJ, Demeler B, Schirf V, Hansen JC, Nersissian AM, Valentine JS, Hart PJ (2000) X-ray crystallographic and analytical ultracentrifugation analyses of truncated and full-length yeast copper chaperones for SOD (LYS7): A dimer-dimer model of LYS7-SOD association and copper delivery. *Biochemistry* 39:3611–3623
- Hanson JC, Camerman N, Camerman A (1981) Structure of a copper-isoniazid complex. *J Med Chem* 24:1369–1371
- Harrison MD, Jones CE, Dameron CT (1999) Copper chaperones: Function, structure and copper-binding properties. *J Biol Inorg Chem* 4:145–153
- Harrison MD, Jones CE, Solioz M, Dameron CT (2000) Intracellular copper routing: the role of copper chaperones. *Trends Biochem Sci* 25:29–32
- Higgins DG, Thompson JD, Gibson TJ (1996) Using CLUSTAL for multiple sequence alignments. *Methods Enzymol* 266:383–402
- Hung IH, Casareno RL, Labesse G, Mathews FS, Gitlin JD (1998) HAH1 is a copper-binding protein with distinct amino acid residues mediating copper homeostasis and antioxidant defense. *J Biol Chem* 273:1749–1754
- Itoh T, Takemoto K, Mori H, Gojobori T (1999) Evolutionary instability of operon structures disclosed by sequence comparisons of complete microbial genomes. *Mol Biol Evol* 16:332–346
- Jordan IK, Natale DA, Galperin MY (2000) Copper chaperones in bacteria: Association with copper-transporting ATPases. *Trends Biochem Sci* 25:480–481
- Kishino H, Hasegawa M (1989) Evaluation of the maximum likelihood estimate of the evolutionary tree topologies from DNA sequence data, and the branching order in hominoidea. *J Mol Evol* 29:170–179
- Koonin EV, Tatusov RL, Galperin MY (1998) Beyond the complete genomes: From sequences to structure and function. *Curr Opin Struct Biol* 8:355–363
- Kozak SF, Inderlied CB, Hsu HY, Heller KB, Sadun AA (1998) The role of copper on ethambutol's antimicrobial action and implications for ethambutol-induced optic neuropathy. *Diagn Microbiol Infect Dis* 30:83–87
- Lamb AL, Wernimont AK, Pufahl RA, Culotta VC, O'Halloran TV, Rosenzweig AC (1999) Crystal structure of the copper chaperone for superoxide dismutase. *Nature Struct Biol* 6:724–729
- Lamb AL, Wernimont AK, Pufahl RA, O'Halloran TV, Rosenzweig AC (2000) Crystal structure of the second domain of the human copper chaperone for superoxide dismutase. *Biochemistry* 39:1589–1595
- Lund PA, Brown NL (1987) Role of the *merT* and *merP* gene products of transposon Tn501 in the induction and expression of resistance to mercuric ions. *Gene* 52:207–214
- Maddison DR, Maddison WP (1992) *MacClade*. Sinauer Associates, Sunderland, MA
- McGuirl MA, Dooley DM (1999) Copper-containing oxidases. *Curr Opin Chem Biol* 3:138–144
- Mushegian AR, Koonin EV (1996) Gene order is not conserved in bacterial evolution. *Trends Genet* 12:289–290
- Natale DA, Galperin MY, Tatusov RL, Koonin EV (2000) Using the COG database to improve gene recognition in complete genomes. *Genetica* 108:9–17
- Odermatt A, Krapf R, Solioz M (1994) Induction of the putative copper ATPases, CopA and CopB, of *Enterococcus hirae* by Ag⁺ and Cu²⁺ and Ag⁺ extrusion by CopB. *Biochem Biophys Res Commun* 202:44–48
- Odermatt A, Solioz M (1995) Two trans-acting metalloregulatory proteins controlling expression of the copper-ATPases of *Enterococcus hirae*. *J Biol Chem* 270:4349–4354
- Odermatt A, Suter H, Krapf R, Solioz M (1992) An ATPase operon involved in copper resistance by *Enterococcus hirae*. *Ann NY Acad Sci* 671:484–486
- Prager EM, Wilson AC (1988) Ancient origin of lactalbumin from lysozyme: analysis of DNA and amino acid sequences. *J Mol Evol* 27:326–335
- Pufahl RA, Singer CP, Peariso KL, Lin SJ, Schmidt PJ, Fahrni CJ, Culotta VC, Penner-Hahn JE, O'Halloran TV (1997) Metal ion chaperone function of the soluble Cu(I) receptor Atx1. *Science* 278:853–856
- Rae TD, Schmidt PJ, Pufahl RA, Culotta VC, O'Halloran TV (1999) Undetectable intracellular free copper: the requirement of a copper chaperone for superoxide dismutase. *Science* 284:805–808
- Rensing C, Fan B, Sharma R, Mitra B, Rosen BP (2000) CopA: An *Escherichia coli* Cu(I)-translocating P-type ATPase. *Proc Natl Acad Sci USA* 97:652–656
- Rosenzweig AC, O'Halloran TV (2000) Structure and chemistry of the copper chaperone proteins. *Curr Opin Chem Biol* 4:140–147
- Rosenzweig AC, Huffman DL, Hou MY, Wernimont AK, Pufahl RA, O'Halloran TV (1999) Crystal structure of the Atx1 metallochaperone protein at 1.02 Å resolution. *Structure Fold Des* 7:605–617
- Saitou N, Nei M (1987) The neighbor-joining method: a new method for reconstructing phylogenetic trees. *Mol Biol Evol* 4:406–425
- Schiering N, Kabsch W, Moore MJ, Distefano MD, Walsh CT, Pai EF (1991) Structure of the detoxification catalyst mercuric ion reductase from *Bacillus* sp. strain RC607. *Nature* 352:168–172
- Silver S (1996) Transport of inorganic cations. In: Neidhardt FC, Curtiss R, Ingraham JL, Linn ECC, Low KB, Magasanik B, Reznikoff WS, Riley M, Schaechter M, Umberger HE (eds) *Escherichia coli* and *Salmonella*. ASM Press, Washington, DC, pp 1091–1102
- Silver S, Phung LT (1996) Bacterial heavy metal resistance: new surprises. *Annu Rev Microbiol* 50:753–789
- Silver S, Misra TK, Laddaga RA (1989) DNA sequence analysis of bacterial toxic heavy metal resistances. *Biol Trace Elem Res* 21:145–163
- Solioz M, Odermatt A, Krapf R (1994) Copper pumping ATPases: Common concepts in bacteria and man. *FEBS Lett* 346:44–47
- Srinivasan C, Posewitz MC, George GN, Winge DR (1998) Characterization of the copper chaperone Cox17 of *Saccharomyces cerevisiae*. *Biochemistry* 37:7562–7577
- Steele RA, Opella SJ (1997) Structures of the reduced and mercury-bound forms of MerP, the periplasmic protein from the bacterial mercury detoxification system. *Biochemistry* 36:6885–6895
- Strimmer K, von Haeseler A (1996) Quartet puzzling: A quartet maximum likelihood method for reconstructing tree topologies. *Mol Biol Evol* 13:964–969
- Swofford DL (1998). PAUP*. Phylogenetic analysis using parsimony (* and other methods). Sinauer Associates, Sunderland, MA
- Tatusov RL, Koonin EV, Lipman DJ (1997) A genomic perspective on protein families. *Science* 278:631–637
- Tatusov RL, Galperin MY, Natale DA, Koonin EV (2000) The COG database: A tool for genome-scale analysis of protein functions and evolution. *Nucleic Acids Res* 28:33–36
- Templeton AR (1983) Phylogenetic inference from restriction endonuclease cleavage site maps with particular reference to the humans and apes. *Evolution* 37:221–244
- Vulpe C, Levinson B, Whitney S, Packman S, Gitschier J (1993) Isolation of a candidate gene for Menkes disease and evidence that it encodes a copper-transporting ATPase. *Nature Genet* 3:7–13
- Wakabayashi T, Nakamura N, Sambongi Y, Wada Y, Oka T, Futai M

- (1998) Identification of the copper chaperone, CUC-1, in *Caenorhabditis elegans*: Tissue specific co-expression with the copper transporting ATPase, CUA-1. FEBS Lett 440:141–146
- Wasinger VC, Humphery-Smith I (1998) Small genes/gene-products in *Escherichia coli* K-12. FEMS Microbiol Lett 169:375–382
- Wimmer R, Herrmann T, Solioz M, Wuthrich K (1999) NMR structure and metal interactions of the CopZ copper chaperone. J Biol Chem 274:22597–22603
- Wu CH, Tsai-Wu JJ, Huang YT, Lin CY, Lioua GG, Lee FJ (1998) Identification and subcellular localization of a novel Cu,Zn superoxide dismutase of *Mycobacterium tuberculosis*. FEBS Lett 439:192–196
- Wunderli-Ye H, Solioz M (1999) Copper homeostasis in *Enterococcus hirae*. Adv Exp Med Biol 448:255–264
- Xia X (2000) DAMBE: Data analysis in molecular biology and evolution. Kluwer, Boston
- Zar JH (1996) Biostatistical analysis. Prentice-Hall, Upper Saddle River, NJ