

Hastings–Levitov Aggregation in the Small-Particle Limit

James Norris^{1,*}, Amanda Turner²

¹ Statistical Laboratory, Centre for Mathematical Sciences, Wilberforce Road, Cambridge CB3 0WB, UK.
E-mail: J.R.Norris@statslab.cam.ac.uk

² Department of Mathematics and Statistics, Lancaster University, Lancaster LA1 4YF, UK

Received: 3 November 2011 / Accepted: 10 February 2012
Published online: 30 September 2012 – © Springer-Verlag 2012

Abstract: We establish some scaling limits for a model of planar aggregation. The model is described by the composition of a sequence of independent and identically distributed random conformal maps, each corresponding to the addition of one particle. We study the limit of small particle size and rapid aggregation. The process of growing clusters converges, in the sense of Carathéodory, to an inflating disc. A more refined analysis reveals, within the cluster, a tree structure of branching fingers, whose radial component increases deterministically with time. The arguments of any finite sample of fingers, tracked inwards, perform coalescing Brownian motions. The arguments of any finite sample of gaps between the fingers, tracked outwards, also perform coalescing Brownian motions. These properties are closely related to the evolution of harmonic measure on the boundary of the cluster, which is shown to converge to the Brownian web.

1. Introduction

Consider an increasing sequence $(K_n : n \geq 0)$ of compact subsets of the complex plane, starting from the closed unit disc K_0 centred at 0. Set $D_n = (\mathbb{C} \cup \{\infty\}) \setminus K_n$ and assume that D_n is simply connected. Write K_n as a disjoint union $K_0 \cup P_1 \cup \dots \cup P_n$. Think of K_n as a cluster formed by attaching a sequence of particles P_1, \dots, P_n to K_0 . By the Riemann mapping theorem, there is a unique normalized conformal map $\Phi_n : D_0 \rightarrow D_n$. Here, by normalized we mean that $\Phi_n(z) = e^{c_n}z + O(1)$ as $|z| \rightarrow \infty$ for some $c_n \in \mathbb{R}$. By a conformal map $D_0 \rightarrow D_n$ we always mean a conformal isomorphism, in particular a bijection. The constant c_n is the logarithmic capacity $\text{cap}(K_n)$ and the sequence $(c_n : n \geq 0)$ is increasing. We can write $\Phi_n = F_1 \circ \dots \circ F_n$, where each F_n is a normalized conformal map from D_0 to a neighbourhood of ∞ in D_0 . Moreover, any sequence $(F_n : n \in \mathbb{N})$ of such conformal maps is associated to such a sequence of sets $(K_n : n \geq 0)$ in this way.

* Research supported by EPSRC grant EP/I03372X/1.

Hasting and Levitov [9] introduced a family of models for random planar growth, indexed by a parameter $\alpha \in [0, 2]$. We shall study a version of the case $\alpha = 0$, which may be described as follows. Let P be a non-empty and connected subset of D_0 , having 1 as a limit point. Set $K = K_0 \cup P$ and $D = (\mathbb{C} \cup \{\infty\}) \setminus K$. Assume that K is compact and that D is simply connected. We think of P as a particle attached to K_0 at 1. For example, P could be a disc of diameter δ tangent to K_0 at 1, or a line segment $(1, 1+\delta]$. We sometimes allow the case where P has other limit points in K_0 , for example $P = \{z \in D_0 : |z - 1| \leq \delta\}$, but always give 1 the preferred status of attachment point. Write F for the unique normalized conformal map $D_0 \rightarrow D$ and set $c = \text{cap}(K)$. We assume throughout that F extends continuously to the closure \bar{D}_0 . This is known to hold if and only if K is locally connected. Let $(\Theta_n : n \in \mathbb{N})$ be a sequence of independent random variables, each uniformly distributed on $[0, 2\pi)$. Define for $n \geq 1$,

$$F_n(z) = e^{i\Theta_n} F(e^{-i\Theta_n} z), \quad \Phi_n = F_1 \circ \dots \circ F_n. \tag{1}$$

Write $(K_n : n \in \mathbb{N})$ and $(P_n : n \in \mathbb{N})$ for the associated sequences of random clusters and particles.

Note that $\text{cap}(K_n) = cn$. Note also that $P_{n+1} = \Phi_n(e^{i\Theta_{n+1}} P)$. Since harmonic measure is conformally invariant, conditional on K_n , the random point $\Phi_n(e^{i\Theta_{n+1}})$ at which P_{n+1} is attached to K_n is distributed on the boundary of K_n according to the normalized harmonic measure from infinity. However P_{n+1} is not a simple copy of P , as would be natural in a model of diffusion limited aggregation, but is distorted¹ by the map Φ_n .

We obtain results which describe the limiting behaviour of the growing cluster when the basic particle P has small diameter δ , identifying both its overall shape and the distribution of random structures of ‘fingers’ and ‘gaps’. Some of these results are stated in Sect. 3. The results are accompanied by illustrations of typical clusters for certain cases of the model. We need some basic estimates for conformal maps, which are derived in Sect. 4. A simplifying feature of the case $\alpha = 0$ is the fact that, for $\Gamma_n = \Phi_n^{-1}$, the process $(\Gamma_n(z) : n \geq 0)$ is Markov, for all $z \in D_0$. This enables us to do a fluid limit analysis in Sect. 5 for the random flows Γ_n as the particles become small, showing that after adding n particles, the cluster fills out a disc of radius e^{cn} , with only small holes. In Sect. 6, we obtain some further estimates which show that the harmonic measure from infinity on the boundary of the cluster is concentrated near the circle of radius e^{cn} and spread out evenly around the circle. We also bound the distortion of individual particles. Section 7 reviews some weak approximation theorems for the coalescing Brownian flow from [16]. These are then applied to the flow of harmonic measure on the cluster boundary in Sect. 8. In conjunction with the results of Sect. 6, this finally allows us to identify the weak limit of the fingers and gaps.

2. Review of Related Work

There has been strong interest in models for the random growth of clusters over the last 50 years. Early models were often set up on a lattice, such as the Eden model [6], Witten and Sander’s diffusion limited aggregation (DLA) [18], and the family of dielectric breakdown models of Niemeyer et al. [14]. The primary interest in these and other related processes has been in the asymptotic behaviour of large clusters.

¹ If we suppose (unrealistically) that Φ'_n is nearly constant on the scale of P , then a rough compensation for the distortion would be achieved by replacing P in the definition of P_{n+1} by a scaled copy of diameter $\delta_{n+1} = |\Phi'_n(e^{i\Theta_{n+1}})|^{-1} \delta$. More generally, we could interpolate between these models by taking $\delta_{n+1} = |\Phi'_n(e^{i\Theta_{n+1}})|^{-\alpha/2} \delta$ for some fixed $\alpha \in [0, 2]$. This is the family proposed by Hastings and Levitov.

Computational investigations of these lattice based models have revealed structures, of fractal type, which in some cases resemble natural phenomena. However, such investigations have also shown sensitivity to details of implementation, in particular to the geometry of the underlying lattice. For example, in [1] and [13] different fractal dimensions are obtained for DLA constructed with different lattice dependencies. This suggests that lattice-based models may not be the most effective way to describe these physical structures. In addition, lattice based models have proved difficult to analyse. There are few notable mathematical results, with the exception of Kesten’s growth estimate for DLA [12], and there is much that remains to be understood about the large-scale behaviour of these models and in particular about the structure of fingers which is characteristically observed.

Hastings and Levitov [9] formulated a family of continuum growth models in terms of sequences of iterated conformal maps, indexed by a parameter $\alpha \in [0, 2]$. They argue, by comparing local growth rates, that their models share features with lattice dielectric breakdown in the range $\alpha \in [1, 2]$, so that $\alpha = 1$ corresponds to the Eden model, and $\alpha = 2$ to DLA. This relation is further explored in the survey paper by Bazant and Crowley [2].

The Hastings–Levitov family of models has been discussed extensively in the physics literature from a numerical point of view. In their original paper, Hastings and Levitov found experimental evidence of a phase transition at $\alpha = 1$, and further studies can be seen in, for example, [5] where estimates for the fractal dimensions of clusters are obtained, [10] where the multifractal properties of harmonic measure on the cluster are explored, and [8] where the dependence of the fractal dimension on α is investigated.

Although this conformal mapping approach to planar random growth processes has proved more tractable than the lattice approach, there have been few rigorous mathematical results, particularly in the case $\alpha > 0$. Carleson and Makarov [3, 4] obtained growth estimates for some deterministic analogues of the DLA model. Rohde and Zinsmeister [17] considered the case $\alpha = 0$ in the Hastings–Levitov family. They established a long-time scaling limit, for fixed particle size and showed that the limit law was supported on clusters of dimension 1. They also gave estimates for the dimension of the limit sets in the case of general α , and discussed limits of deterministic variants. Recently, Johansson Viklund, Sola and Turner [11] studied an anisotropic version of the Hastings–Levitov model in the $\alpha = 0$ case, and established deterministic scaling limits for the macroscopic shape and evolution of harmonic measure on the cluster boundary.

In this paper, we also consider the case $\alpha = 0$ but in the limiting regime where the particle diameter δ becomes small and where the size of the cluster is of order 1 or larger. We obtain a precise description of the macroscopic shape and growth dynamics of these clusters, as well as a fine scale description of the underlying branching structure. In the process of obtaining these results, we show that the evolution of harmonic measure on the cluster boundary converges to the coalescing Brownian flow, also known as the Brownian web [7]. An early version of some parts of the present paper, along with its companion paper [16], appeared in [15].

3. Statement of Results

We state here our main results on the shape and structure of the Hastings–Levitov cluster. Our main result on the harmonic measure flow, which cannot be stated so directly, is Theorem 8.1. For simplicity, we assume in this section that the basic particle P is either a slit $(1, 1 + \delta]$ or a disc $\{|z - 1 - \delta/2| \leq \delta/2\}$, and that $\delta \in (0, 1/3]$. We shall

prove our results under some general conditions (2), (10), (12) on the basic particle P , which can be readily checked for the slit and disc models. We shall see that under one of these conditions (2) the logarithmic capacity $c = \text{cap}(K) = \log F'(\infty)$ of K satisfies $\delta^2/6 \leq c \leq 3\delta^2/4$. Our first result expresses that the cluster K_n is contained in a disc of approximate radius e^{cn} and fills out that disc with only small holes. Moreover, there is a rough correspondence between the time at which a particle arrives and its distance from the origin.

Theorem 3.1. *Consider for $\varepsilon \in (0, 1]$ and $m \in \mathbb{N}$ the event $\Omega[m, \varepsilon]$ specified by the following conditions: for all $n \leq m$ and all $n' \geq m + 1$,*

$$|z - e^{cn+i\Theta_n}| \leq \varepsilon e^{cn} \quad \text{for all } z \in P_n$$

and

$$\text{dist}(w, K_n) \leq \varepsilon e^{cn} \quad \text{whenever } |w| \leq e^{cn}$$

and

$$|z| \geq (1 - \varepsilon)e^{cm} \quad \text{for all } z \in P_{n'}.$$

Assume that $\varepsilon = \delta^{2/3}(\log(1/\delta))^8$ and $m = \lfloor \delta^{-6} \rfloor$. Then $\mathbb{P}(\Omega[m, \varepsilon]) \rightarrow 1$ as $\delta \rightarrow 0$.

This result is a special case of Theorem 6.5 below. Note that $\Omega[m, \varepsilon]$ is decreasing in m and increasing in ε . We have made some effort to maximise the power $2/3$ in this statement. It will be crucial later that $2/3 > 1/2$. We shall take particular interest in the case where m is of order δ^{-2} and in the case where m is of order δ^{-3} , when the logarithm of the diameter of the cluster K_m is of order 1 and δ^{-1} respectively. We have not attempted to optimise the power 8 in the logarithm.

In Fig. 1, we present some realizations of the cluster when P is a slit² $(1, 1 + \delta)$, for various values of δ . We observe in Fig. 1(b), when $\delta = 1$, that incoming particles are markedly distorted and that particles arriving later tend to be larger. This effect is diminished when we examine smaller values of δ . In Fig. 1(e), the cluster is a rough disc, as predicted by Theorem 3.1 but with some sort of internal structure. The colours label arrivals in different epochs, showing that there is a close relationship between the time of arrival and the distance from the origin at which a particle sticks, as in Theorem 3.1. Figure 1(f) focuses on the motion of points on the boundary of the unit circle, under the inverse map $\Gamma_n = \Phi_n^{-1}$ and over a longer timescale than for the other simulations. This motion suggests the behaviour of coalescing Brownian motions, which is confirmed in Theorem 8.1 below.

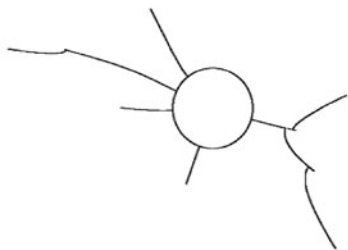
We now fix $N \in \mathbb{N}$ and state two results describing the internal geometry of the cluster K_N in terms of coalescing Brownian motions, which will follow from Theorems 3.1 and 8.1. Define

$$\tilde{K}_n = \{z \in \mathbb{C} : e^z \in K_n\}, \quad \tilde{D}_n = \{z \in \mathbb{C} : e^z \in D_n\}$$

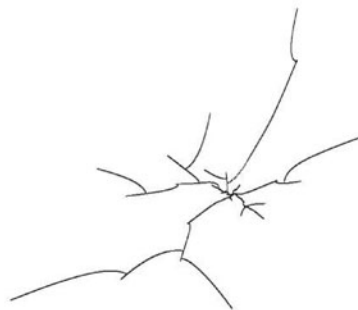
and determine $\rho = \rho(P) \in (0, \infty)$ by

$$\frac{\rho}{2\pi} \int_0^{2\pi} (g(\theta) - \theta)^2 d\theta = 1,$$

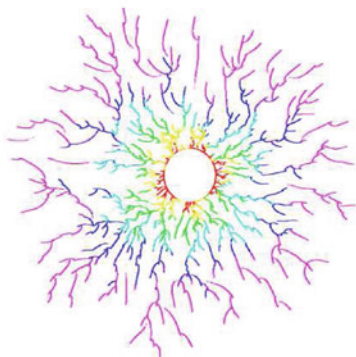
² The normalized conformal map $G = F^{-1} : D \rightarrow D_0$ can be obtained in this case as $\phi^{-1} \circ g_1 \circ \phi$, where ϕ takes D_0 to the upper half plane H_0 by $\phi(z) = i(z - 1)/(z + 1)$ and $g_1(z) = \sqrt{(z^2 + t)/(1 - t)}$ takes $H = H_0 \setminus (0, i\sqrt{t}]$ to H_0 , where $t = \delta^2/(2 + \delta)^2$. A straightforward calculation gives $c = c(\delta) = -\log G'(\infty) = -\log(1 - t) \asymp \delta^2/4$.



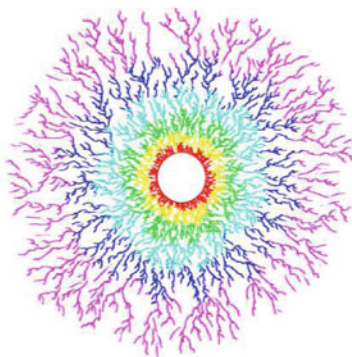
(a) The cluster after a few arrivals with $\delta = 1$.



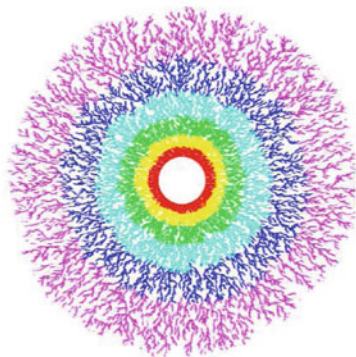
(b) The cluster after 100 arrivals with $\delta = 1$.



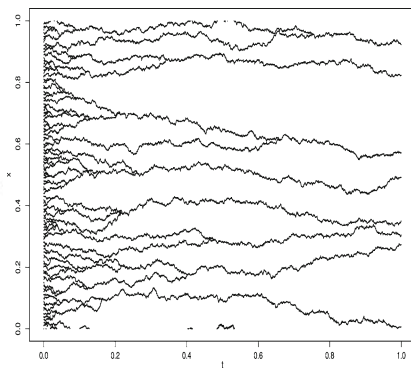
(c) The cluster after 800 arrivals with $\delta = 0.1$.



(d) The cluster after 5000 arrivals with $\delta = 0.04$.



(e) The cluster after 20000 arrivals with $\delta = 0.02$.



(f) Trajectories of $\tilde{\Gamma}_n(e^{2\pi i x})/(2\pi i)$ for $\delta = 0.02$, with $t = n\delta^3$.

Fig. 1. The slit case of HL(0)

where g is the unique continuous map $(0, 2\pi) \rightarrow (0, 2\pi)$ such that $g(\pi) = \pi$ and $G(e^{i\theta}) = e^{ig(\theta)}$ for all θ . We shall show in Proposition 4.3 that $\delta^{-3}/C \leq \rho \leq C\delta^{-3}$ for an absolute constant $C < \infty$. Note that K_N has a natural notion of ancestry for its constituent particles: we say that P_k is the parent of P_{n+1} if $\Phi_n(e^{i\Theta_{n+1}}) \in P_k$. This notion is inherited by the covering cluster \tilde{K}_N and will allow us to identify path-like structures within the cluster. For $\text{Re}(z) \geq 0$, denote by $\tilde{P}_0(z)$ the closest particle to z in \tilde{K}_N , and recursively denote by $\tilde{P}_m(z)$ the parent of $\tilde{P}_{m-1}(z)$ until $m = m(z)$ when $\tilde{P}_{m(z)}(z)$ is attached to the imaginary axis, at $a(z)$ say. Consider the compact set

$$\text{finger}(z) = \{a(z)\} \cup \bigcup_{m=0}^{m(z)} \tilde{P}_m(z).$$

We shall describe also the structure of the complementary set \tilde{D}_N , using a choice of paths in this set. The notion of ancestry is not available, so we look instead for paths in the gaps which lead mainly outwards, that is to the right in the logarithmic picture. In order to enforce this outwards property, we impose a condition of minimal length, which requires a suitable completion of the set of paths. By a *gap path* we mean a rectifiable path $(p_\tau)_{\tau \geq 0}$ in \mathbb{C} , parametrized by arc length, such that $\text{Re}(p_\tau) \rightarrow \infty$ as $\tau \rightarrow \infty$ and such that, for some continuous map $h : [0, \infty) \times [0, 1] \rightarrow \mathbb{C}$ and for all $\tau \geq 0$, we have $p_\tau = h(\tau, 1)$ and $h(\tau, t) \in \tilde{D}_N$ for all $t \in [0, 1)$. For $R > 0$, define $L_R(p) = \inf\{\tau \geq 0 : \text{Re}(p_\tau) = R\}$. Write $p_0(z)$ for the closest point to z which is not in the interior of \tilde{K}_N . Since \tilde{D}_N is simply connected and K_N is compact, there exists a unique gap path $p(z)$ starting from $p_0(z)$ and minimizing $L_R(p)$ over all gap paths starting from $p_0(z)$, for all sufficiently large R . The path $p(z)$ may be thought of as a long piece of thread outside the cluster, with one end attached to $p_0(z)$ and drawn tight by pulling from the right. Set

$$\text{gap}(z) = \{p_\tau(z) : \tau \geq 0\}.$$

Note that, by minimality, for all $\tau_1, \tau_2 \geq 0$ with $\tau_1 < \tau_2$ and such that the open line segment $I = (p_{\tau_1}(z), p_{\tau_2}(z))$ is contained in \tilde{D}_N , we have $p_\tau(z) \in I$ for all $\tau \in (\tau_1, \tau_2)$. These definitions are illustrated in Fig. 2. Both fingers and gaps depend implicitly on N , although we have suppressed this in the notation.

In order to capture the limiting fluctuations of the fingers and gaps we have to rescale. We do this in two ways, defining horizontal and vertical scaling operators σ and $\bar{\sigma}$ by

$$\sigma(r + i\theta) = (\delta^*r, \theta), \quad \bar{\sigma}(r + i\theta) = (r, \theta/\sqrt{\delta^*}), \quad r \geq 0, \quad \theta \in \mathbb{R},$$

where $\delta^* = (\rho c)^{-1}$. Note that $\delta/C \leq \delta^* \leq C\delta$ for an absolute constant $C < \infty$. Also $\bar{\sigma} = \sigma_{\delta^*} \circ \sigma$, where σ_{δ^*} is the diffusive scaling

$$\sigma_{\delta^*}(s, x) = (s/\delta^*, x/\sqrt{\delta^*}), \quad s \geq 0, \quad x \in \mathbb{R}.$$

The horizontal scaling identifies global random behaviour in the fingers and gaps over very long time scales, whereas the vertical scaling identifies local fluctuations in the fingers and gaps while the size of the cluster is of order 1.

Denote by \mathcal{S} the space of closed subsets of $[0, \infty) \times \mathbb{R}$, equipped with a local Hausdorff metric. Define $\mathbb{F}, \mathbb{G} : [0, \infty) \times \mathbb{R} \rightarrow \mathcal{S}$ and $\bar{\mathbb{F}}, \bar{\mathbb{G}} : [0, \infty) \times \mathbb{R} \rightarrow \mathcal{S}$ by

$$\begin{aligned} \mathbb{F} &= \sigma \circ \text{finger} \circ \sigma^{-1}, & \mathbb{G} &= \sigma \circ \text{gap} \circ \sigma^{-1}, \\ \bar{\mathbb{F}} &= \bar{\sigma} \circ \text{finger} \circ \bar{\sigma}^{-1}, & \bar{\mathbb{G}} &= \bar{\sigma} \circ \text{gap} \circ \bar{\sigma}^{-1}. \end{aligned}$$

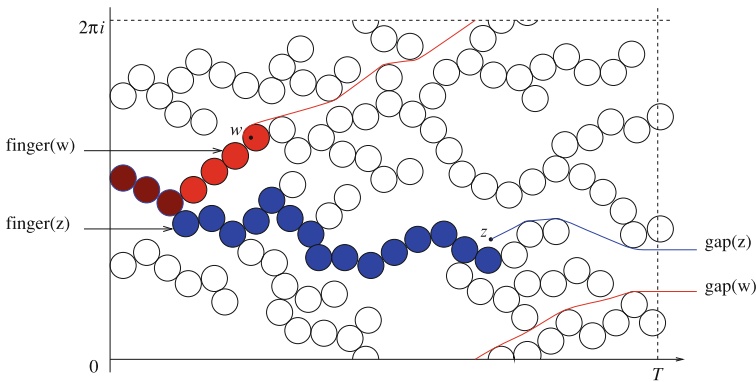


Fig. 2. Diagram illustrating fingers and gaps in \tilde{K}_N (repeating periodically). This is only a representation and in general the particles will be distorted both by the conformal mapping and by the logarithmic transformation

Thus, for $e = (s(e), x(e))$,

$$\begin{aligned} \mathbb{F}(e) &= \{\sigma(w) : w \in \text{finger}(s(e)/\delta^* + ix(e))\}, & \mathbb{G}(e) &= \{\sigma(w) : w \in \text{gap}(s(e)/\delta^* + ix(e))\}, \\ \bar{\mathbb{F}}(e) &= \{\bar{\sigma}(w) : w \in \text{finger}(s(e) + ix(e)\sqrt{\delta^*})\}, & \bar{\mathbb{G}}(e) &= \{\bar{\sigma}(w) : w \in \text{gap}(s(e) + ix(e)\sqrt{\delta^*})\}. \end{aligned}$$

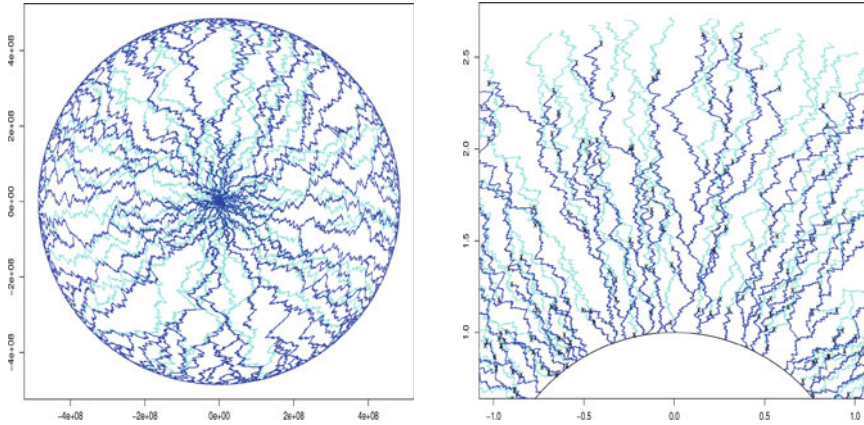
We consider $\mathbb{F}(e), \bar{\mathbb{F}}(e), \mathbb{G}(e), \bar{\mathbb{G}}(e)$ as random variables in \mathcal{S} .

We state first the long time result. Fix $T > 0$ and let E be a finite subset of $[0, T] \times \mathbb{R}$. Take $N = \lfloor \rho T \rfloor$ so that K_N is approximately a disc of radius e^{T/δ^*} . Denote by ν_E^P and η_E^P the respective laws of $(\mathbb{F}(e) : e \in E)$ and $(\mathbb{G}(e) : e \in E)$ on \mathcal{S}^E . Let $(B^e : e \in E)$ be a family of 2π -coalescing Brownian motions, B^e running backwards in time from $x(e)$ at time $s(e)$. Thus $B^e = (B_t^e : 0 \leq t \leq s(e))$ and for all $e, e' \in E$, B^e and $B^{e'}$ are independent until (time running backwards) their difference is an integer multiple of 2π , at which point it freezes. Let $(W^e : e \in E)$ be a family of 2π -coalescing Brownian motions, with W^e running forwards in time from $x(e)$ at time $s(e)$. Denote by ν_E and η_E the laws on \mathcal{S}^E of the families of random sets $(\{(t, B_t^e) : 0 \leq t \leq s(e)\} : e \in E)$ and $(\{(t, W_{t \wedge T}^e) : t \geq s(e)\} : e \in E)$.

Theorem 3.2. *We have $\nu_E^P \rightarrow \nu_E$ and $\eta_E^P \rightarrow \eta_E$ weakly on \mathcal{S}^E as $\delta \rightarrow 0$.*

Thus, for small δ , we can construct on a common probability space, the cluster K_N and backwards and forwards 2π -coalescing Brownian motions, such that the union of fingers in \tilde{K}_N starting from points $s(e)/\delta^* + ix(e)$, $e \in E$ is, with probability close to 1, close in Hausdorff metric to the set $\bigcup_{e \in E} \{t/\delta^* + iB_t^e : 0 \leq t \leq s(e)\}$, and hence the union of fingers in K_N , starting from points $\exp(s(e)/\delta^* + ix(e))$, $e \in E$ looks approximately like the set $\bigcup_{e \in E} \{\exp(t/\delta^* + iB_t^e) : 0 \leq t \leq s(e)\}$. Similarly, the union of gaps in K_N , starting from points $\exp(s(e)/\delta^* + ix(e))$, $e \in E$ looks approximately like the set $\bigcup_{e \in E} \{\exp(t/\delta^* + iW_{t \wedge T}^e) : t \geq s(e)\}$. A simulation of $\bigcup_{e \in E} \{\exp(t/\delta^* + iB_t^e) : 0 \leq t \leq s(e)\}$ and $\bigcup_{e \in E} \{\exp(t/\delta^* + iW_t^e) : s(e) \leq t \leq T\}$ is shown in Fig. 3(a).

For the local result we take now $N = \lfloor c^{-1}T \rfloor$ so that K_N is approximately a disc of radius e^T . Denote by $\bar{\nu}_E^P$ and $\bar{\eta}_E^P$ the laws of $(\bar{\mathbb{F}}(e) : e \in E)$ and $(\bar{\mathbb{G}}(e) : e \in E)$ on \mathcal{S}^E . Let $(\bar{B}^e : e \in E)$ be a family of coalescing Brownian motions, \bar{B}^e running backwards in time from $x(e)$ at time $s(e)$. Thus $\bar{B}^e = (\bar{B}_t^e : 0 \leq t \leq s(e))$ and for all $e, e' \in E$, \bar{B}^e and $\bar{B}^{e'}$ are independent until (time running backwards) they collide,



(a) An approximation of a finite set of fingers and gaps in K_N , with $N = \lfloor \rho T \rfloor$, when $T = 1$ and $\delta^* = 0.05$.

(b) An approximation of a finite set of fingers and gaps in K_N , with $N = \lfloor c^{-1}T \rfloor$, when $T = 1$ and $\delta^* = 0.01$.

Fig. 3. Geometric illustration of Theorems 3.2 and 3.3, where fingers are denoted in *dark blue*, and gaps in *light blue* (colour figure online)

at which time they coalesce. Let $(\bar{W}^e : e \in E)$ be a family of coalescing Brownian motions, with \bar{W}^e running forwards in time from $x(e)$ at time $s(e)$. Denote by $\bar{\nu}_E$ and $\bar{\eta}_E$ the laws on \mathcal{S}^E of the families of random sets $(\{(t, \bar{B}_t^e) : 0 \leq t \leq s(e)\} : e \in E)$ and $(\{(t, \bar{W}_{t \wedge T}^e) : t \geq s(e)\} : e \in E)$.

Theorem 3.3. *We have $\bar{\nu}_E^P \rightarrow \bar{\nu}_E$ and $\bar{\eta}_E^P \rightarrow \bar{\eta}_E$ weakly on \mathcal{S}^E as $\delta \rightarrow 0$.*

Thus, for small δ , we can construct on a common probability space, the cluster K_N and backwards and forwards coalescing Brownian motions, such that the union of fingers in \tilde{K}_N starting from points $s(e) + ix(e)\sqrt{\delta^*}$, $e \in E$ is, with probability close to 1, close in Hausdorff metric to the set $\bigcup_{e \in E} \{t + i\bar{B}_t^e\sqrt{\delta^*} : 0 \leq t \leq s(e)\}$, and hence the union of fingers in K_N , starting from points $\exp(s(e) + ix(e)\sqrt{\delta^*})$, $e \in E$ looks approximately like the set $\bigcup_{e \in E} \{\exp(t + i\bar{B}_t^e\sqrt{\delta^*}) : 0 \leq t \leq s(e)\}$. Similarly, the union of gaps in K_N , starting from points $\exp(s(e) + ix(e)\sqrt{\delta^*})$, $e \in E$ looks approximately like the set $\bigcup_{e \in E} \{\exp(t + i\bar{W}_{t \wedge T}^e\sqrt{\delta^*}) : t \geq s(e)\}$. A simulation of $\bigcup_{e \in E} \{\exp(t + i\bar{B}_t^e\sqrt{\delta^*}) : 0 \leq t \leq s(e)\}$ and $\bigcup_{e \in E} \{\exp(t + i\bar{W}_t^e\sqrt{\delta^*}) : s(e) \leq t \leq T\}$ is shown in Fig. 3(b).

Theorems 3.2 and 3.3 are obvious corollaries of Theorem 8.2, which identifies also the limiting joint law of fingers and gaps.

4. Some Basic Estimates

We derive in this section some estimates for quantities associated to the basic particle P . In some special cases one could use instead an explicit calculation. By proving general estimates we are able to demonstrate some universality for the small-particle limit. Recall that $K = K_0 \cup P$ and $D = (\mathbb{C} \cup \{\infty\}) \setminus K$, with K compact and locally connected and D simply connected in $\mathbb{C} \cup \{\infty\}$. The following assumptions are in force throughout

this section:

$$\delta \in (0, 1/3] \quad \text{and} \quad P \subseteq \{z \in \mathbb{C} : |z-1| \leq \delta\} \quad \text{and} \quad 1+\delta \in P \quad \text{and} \quad P = \{\bar{z} : z \in P\}. \tag{2}$$

Consider the map $\psi(z) = \bar{z}^{-1}$ on $\mathbb{C} \cup \{\infty\}$ by reflection in the unit circle S . Set $\hat{P} = \psi(P)$ and $\hat{D} = \psi(D)$, $\hat{D}_0 = \psi(D_0)$. Define also $P^* = P \cup I \cup \hat{P}$, where I is the set of limit points of P in S , and set $D^* = (\mathbb{C} \cup \{\infty\}) \setminus P^*$. By the Riemann mapping theorem, there is a conformal map $\hat{G} : \hat{D} \rightarrow \hat{D}_0$ and a constant $c \in \mathbb{R}$ such that $\hat{G}(z) = e^c z + O(|z|^2)$ as $|z| \rightarrow 0$, and \hat{G} and c are unique. Moreover \hat{G} extends to a conformal map $G^* : D^* \rightarrow (\mathbb{C} \cup \{\infty\}) \setminus J$ for some interval $J \subseteq S$, with $G^* \circ \psi = \psi \circ G^*$ on D^* . Write G for the restriction of G^* to D . Then G is a conformal map $D \rightarrow D_0$ and $G(z) = e^{-c} z + O(1)$ as $|z| \rightarrow \infty$. The constant c is the logarithmic capacity $\text{cap}(K)$. The well known fact that c is positive will emerge in the course of the proof of Proposition 4.1.

Note that D^* is simply connected and $G^*(z)/z \neq 0$ for all $z \in D^*$. So we may choose a branch of the logarithm so that $\log(G^*(z)/z)$ is continuous on D^* with limit c at 0 and then, for some constant $C(K) < \infty$, we have

$$\left| \log \left(\frac{\hat{G}(z)}{z} \right) - c \right| \leq C(K)|z|, \quad z \in \hat{D}$$

and so

$$\left| \log \left(\frac{G(z)}{z} \right) + c \right| \leq \frac{C(K)}{|z|}, \quad z \in D.$$

In fact the following stronger estimate holds.

Proposition 4.1. *There is an absolute constant $C < \infty$ such that*

$$\left| \log \left(\frac{G(z)}{z} \right) + \text{cap}(K) \right| \leq \frac{C \text{cap}(K)}{|z-1|}, \quad |z-1| > 2\delta, \quad z \in D.$$

Proof. Set $H(z) = u(z) + iv(z) = \log(G^*(z)/z)$. Then H is bounded and holomorphic on D^* and $H(z) \rightarrow -c$ as $|z| \rightarrow \infty$. Fix $z \in \mathbb{C}$ and let B be a complex Brownian motion starting from z . Suppose that $z \in D$ and consider the stopping time

$$T = \inf\{t \geq 0 : B_t \notin D\}.$$

Then $T < \infty$ and $|B_T| \geq 1$ almost surely, and $|B_T| > 1$ with positive probability. Also $u(B_t) \rightarrow -\log |B_T|$ as $t \uparrow T$ almost surely. Hence, by optional stopping,

$$u(z) = -\mathbb{E}(\log |B_T|) < 0.$$

Set $r = \delta/(2 - \delta)$ and define $P_1^* = \{z \in \mathbb{C} : |z-1| \leq r|z+1|\}$. Then set

$$D_1^* = (\mathbb{C} \cup \{\infty\}) \setminus P_1^*, \quad P_1 = P_1^* \cap D_0, \quad D_1 = D_1^* \cap D_0, \quad K_1 = K_0 \cup P_1.$$

Then $P^* \subseteq P_1^* \subseteq \{z \in \mathbb{C} : |z-1| \leq \delta/(1-\delta)\}$. The boundary of D_1 consists of two circular arcs, one contained in S , where $u = 0$, the other contained in P_1 , which we denote by A . The normalized conformal map $G_1 : D_1 \rightarrow D_0$ can be obtained as $\phi^{-1} \circ g_1 \circ \phi$, where ϕ takes D_0 to the upper half-plane by $\phi(z) = i(z-1)/(z+1)$ and

$g_1(z) = (z + r^2/z)/(1 - r^2)$. Hence we obtain $G_1^*(z) = z(\gamma z - 1)/(z - \gamma)$ for $z \in D_1^*$, where $\gamma = (1 - r^2)/(1 + r^2)$, and $G_1(A) = \{e^{i\theta} : |\theta| < \theta_0\}$, where $\theta_0 = \cos^{-1} \gamma$. Set $F_1 = G_1^{-1}$. Then $u \circ F_1$ is bounded and harmonic on D_0 . Suppose now that $z \in D_0$ and consider the stopping time

$$T_0 = \inf\{t \geq 0 : B_t \notin D_0\}.$$

Then $T_0 < \infty$ almost surely and, by optional stopping,

$$u(F_1(z)) = \mathbb{E}(u(F_1(B_{T_0}))) = \frac{1}{2\pi} \int_{|\theta| \leq \theta_0} u(F_1(e^{i\theta})) \operatorname{Re} \left(\frac{z + e^{i\theta}}{z - e^{i\theta}} \right) d\theta.$$

On letting $|z| \rightarrow \infty$ we obtain

$$c = -\frac{1}{2\pi} \int_{|\theta| \leq \theta_0} u(F_1(e^{i\theta})) d\theta > 0,$$

so

$$u(F_1(z)) + c = \frac{1}{2\pi} \int_{|\theta| \leq \theta_0} u(F_1(e^{i\theta})) \operatorname{Re} \left(\frac{2e^{i\theta}}{z - e^{i\theta}} \right) d\theta.$$

Hence, for $z \in D_1$,

$$|u(z) + c| \leq \frac{2c}{\operatorname{dist}(G_1(z), G_1(A))}.$$

By an elementary calculation, we have $|(G_1^*)'(z) - \gamma| \leq 6\gamma/7$ whenever $|z - 1| \geq 7\delta/4$ and $\delta \in (0, 1/3]$. Set $A' = \{z \in \mathbb{C} : |z - 1| = 7\delta/4\}$. Then $\operatorname{dist}(G_1(z), G_1(A)) \geq \operatorname{dist}(G_1(z), G_1(A'))$ whenever $|z - 1| \geq 7\delta/4$. By the mean value theorem, there is an absolute constant $C_1 < \infty$ such that

$$\operatorname{dist}(G_1(z), G_1(A')) \geq |z - 1|/C_1, \quad |z - 1| \geq 2\delta.$$

Hence

$$|u(z) + c| \leq 2C_1c/|z - 1|, \quad |z - 1| \geq 2\delta, \quad z \in D,$$

and the same estimate extends to D^* by reflection.

Then, by a standard estimate for harmonic functions (differentiate the Poisson kernel),

$$|\nabla v(z)| = |\nabla u(z)| \leq 8C_1c/|z - 1|^2, \quad |z - 1| \geq 2\delta, \quad z \in D, \tag{3}$$

and so

$$|v(z)| \leq \int_0^\infty |\nabla v(z + s(z - 1))| |z - 1| ds \leq 8C_1c/|z - 1|, \quad |z - 1| \geq 2\delta, \quad z \in D,$$

giving the required bound. \square

Corollary 4.2. *We have $\delta^2/6 \leq \operatorname{cap}(K) \leq 3\delta^2/4$.*

Proof. We use notation from the preceding proof. By uniqueness, we have $G_1 = G^\dagger \circ G$, where G^\dagger is the normalized conformal map $G(D_1) \rightarrow D_0$. Hence

$$\text{cap}(K) \leq \text{cap}(K) + \text{cap}(G(K_1 \setminus K)) = \text{cap}(K_1) = \log \left(\frac{1+r^2}{1-r^2} \right) \leq \frac{3\delta^2}{4}.$$

Also, since $1 + \delta \in P$, $G = G^\ddagger \circ G_2$, where G_2 is the normalized slit map $D_2 = D_0 \setminus (1, 1 + \delta] \rightarrow D_0$ referred to in Sect. 3 and G^\ddagger is the normalized conformal map $G_2(D) \rightarrow D_0$. Let $K_2 = K_0 \cup (1, 1 + \delta]$. Then

$$\text{cap}(K) = \text{cap}(K_2) + \text{cap}(G_2(K \setminus K_2)) \geq -\log \left(1 - \frac{\delta^2}{(2+\delta)^2} \right) \geq \frac{\delta^2}{6}.$$

□

We shall do most of the analysis in logarithmic coordinates. Set $\tilde{D} = \{z \in \mathbb{C} : e^z \in D\}$ and $\tilde{D}_0 = \{z \in \mathbb{C} : \text{Re}(z) > 0\}$. There are unique conformal maps $\tilde{G} : \tilde{D} \rightarrow \tilde{D}_0$ and $\tilde{F} : \tilde{D}_0 \rightarrow \tilde{D}$ such that $\tilde{G}(z) - z + c \rightarrow 0$ and $\tilde{F}(z) - z - c \rightarrow 0$ as $\text{Re}(z) \rightarrow \infty$. Then \tilde{F} and \tilde{G} are $2\pi i$ -periodic and $\tilde{F} = \tilde{G}^{-1}$. Also $G \circ \exp = \exp \circ \tilde{G}$ and $F \circ \exp = \exp \circ \tilde{F}$. Proposition 4.1 and (3) provide the following estimates for $\tilde{G}(z)$

$$|\tilde{G}(z) - z + c| \leq \frac{Cc}{|e^z - 1|}, \quad |\tilde{G}'(z) - 1| \leq \frac{Cc|e^z|}{|e^z - 1|^2}, \quad |e^z - 1| \geq 2\delta, \quad z \in \tilde{D}. \tag{4}$$

We introduce some further functions associated to \tilde{G} and \tilde{F} . Recall the definitions of I and J from the start of this section. Since P is symmetric, we can write $I = \{e^{i\theta} : |\theta| \leq p\}$ and $J = \{e^{i\theta} : |\theta| \leq q\}$ for some $p \in [0, \pi)$ and $q \in (0, \pi)$. Then there exist unique non-decreasing right-continuous functions g^+ and f^+ on \mathbb{R} such that the functions $\theta \mapsto g^+(\theta) - \theta$ and $\theta \mapsto f^+(\theta) - \theta$ are 2π -periodic and such that

$$g^+(\theta) = \begin{cases} \pm q, & \pm\theta \in (0, p] \\ \text{Im}(\tilde{G}(i\theta)), & |\theta| \in (p, \pi] \end{cases}, \quad f^+(\theta) = \begin{cases} 0, & |\theta| \in [0, q) \\ \text{Im}(\tilde{F}(i\theta)), & |\theta| \in (q, \pi] \end{cases}. \tag{5}$$

Here we have used the continuous extensions of \tilde{G} and \tilde{F} to certain intervals of the imaginary axis. Define, for $\theta \in \mathbb{R}$,

$$g_0(\theta) = g^+(\theta) - \theta$$

and, for $x \in (0, 1]$ such that $x + i\theta \in \tilde{D}$, define

$$g_x(\theta) = \text{Im}(\tilde{G}(x + i\theta)) - \theta.$$

Proposition 4.3. *There is an absolute constant $C < \infty$ such that, for $\alpha = C\delta$ and $|\theta| \leq \pi$,*

$$|g_0(\theta)| \leq \frac{\alpha^2}{|\theta| \vee \alpha},$$

and the same estimate holds for $|g_x(\theta)|$ when $x \in (0, 1]$ and $x + i\theta \in \tilde{D}$. Moreover C may be chosen so that

$$\delta^3/C \leq \frac{1}{2\pi} \int_0^{2\pi} g_0(\theta)^2 d\theta \leq C\delta^3, \quad \frac{1}{2\pi} \int_0^{2\pi} |g_0(\theta)g_0(\theta + a)| d\theta \leq \frac{C\delta^4}{a} \log \left(\frac{1}{\delta} \right)$$

whenever $a \in [\delta, \pi]$.

Proof. The first estimate follows from the first estimate in (4), using the non-decreasing property of g^+ and the maximum principle to deal with the case where $|e^{x+i\theta} - 1| < 2\delta$, and using $\text{cap}(K) \leq 3\delta^2/4$. This leads directly to the upper bound in the second estimate and the third estimate.

For the lower bound, note that

$$\frac{1}{2\pi} \int_0^{2\pi} g_0(\theta)^2 d\theta \geq \frac{1}{\pi} \int_0^q (q - \theta)^2 d\theta = \frac{q^3}{3\pi}$$

and $q = \pi \mathbb{P}_\infty(B_T \in P)$. We give an argument which uses neither the symmetry assumption $P = \{\bar{z} : z \in P\}$ nor the assumption $1 + \delta \in P$ and instead assumes only that $|z - 1| = \delta$ for some $z \in P$. This will be useful in Lemma 6.1. Denote by $P^{(2)}$ the union of P with its reflection in the line ℓ joining z and 0. Denote by w the image of 1 under this reflection and by A the shorter arc in the unit circle joining w and 1. Then, since P is connected, we have

$$\begin{aligned} 2\mathbb{P}_\infty(B_T \in P) &\geq \mathbb{P}_\infty(B \text{ hits } P^{(2)} \text{ before } K_0) \\ &\geq \mathbb{P}_\infty(B \text{ hits } K_0 \text{ in } A) \vee \mathbb{P}_\infty(B \text{ hits } \ell \text{ before } K_0) \\ &\geq (|w - 1| \vee (|z| - 1))/(2\pi) \geq \delta/(4\pi), \end{aligned} \tag{6}$$

which gives the claimed lower bound. \square

5. Fluid Limit Analysis for Random Conformal Maps

Define conformal maps \tilde{F}_n and $\tilde{\Phi}_n$ on \tilde{D}_0 by

$$\tilde{F}_n(z) = \tilde{F}(z - i\Theta_n) + i\Theta_n, \quad \tilde{\Phi}_n = \tilde{F}_1 \circ \dots \circ \tilde{F}_n,$$

where $(\Theta_n : n \in \mathbb{N})$ is the sequence of independent uniformly distributed random variables specified in the Introduction. Write $\tilde{\Gamma}_n$ for the inverse map $\tilde{\Phi}_n^{-1} : \tilde{D}_n \rightarrow \tilde{D}_0$. It will be convenient to use the filtration $(\mathcal{F}_n : n \geq 0)$ given by $\mathcal{F}_n = \sigma(\Theta_1, \dots, \Theta_n)$. Recall that we write c for the logarithmic capacity $\text{cap}(K)$. Assumption (2) remains in force in this section.

For $\varepsilon \in [2\delta, 1]$ and $m \in \mathbb{N}$, denote by $\Omega(m, \varepsilon)$ the event defined by the following conditions: for all $z \in \tilde{D}_0$ and all $n \leq m$, we have

$$|\tilde{\Phi}_n(z) - z - cn| < \varepsilon \quad \text{whenever} \quad \text{Re}(z) \geq 5\varepsilon$$

and

$$z \in \tilde{D}_n \quad \text{and} \quad |\tilde{\Gamma}_n(z) - z + cn| < \varepsilon \quad \text{whenever} \quad \text{Re}(z) \geq cn + 4\varepsilon.$$

Note the round brackets – this is not the same event as $\Omega[m, \varepsilon]$, defined above. We shall use the following estimate in the case where $m = \lfloor \delta^{-6} \rfloor$ and $\varepsilon = \delta^{2/3} \log(1/\delta)$ when, using the bound $c \leq 3\delta^2/4$ from Corollary 4.2, it implies that $\Omega(m, \varepsilon)$ has high probability as $\delta \rightarrow 0$. The proof is based on a fluid limit approximation for each Markov process $(\tilde{\Gamma}_n(z) : n \geq 0)$, optimized using explicit martingale estimates. Local uniformity in z is achieved by combining the estimates for individual starting points with an application of Kolmogorov’s Hölder criterion.

Proposition 5.1. *There is an absolute constant $C < \infty$ such that, for all $\varepsilon \in [2\delta, 1]$ and all $m \in \mathbb{N}$,*

$$\mathbb{P}(\Omega \setminus \Omega(m, \varepsilon)) \leq C(m + \varepsilon^{-2})e^{-\varepsilon^3/(C\varepsilon)}.$$

Proof. It will suffice to consider the case where $\varepsilon^3 \geq c$. Set $M = \lceil cm/(2\varepsilon) \rceil$. Fix $k \in \{1, \dots, M\}$ and set $R = 2(k+1)\varepsilon$. Consider the vertical line $\ell_R = \{z \in \mathbb{C} : \operatorname{Re}(z) = R\}$. Write N for the largest integer such that $cN \leq R - 2\varepsilon$. Consider the stopping time

$$T = T_R = \inf\{n \geq 0 : z \notin \tilde{D}_n \text{ or } \operatorname{Re}(\tilde{\Gamma}_n(z)) \leq R - cn - \varepsilon \text{ for some } z \in \ell_R\} \wedge N.$$

Note that

$$\operatorname{Re}(\tilde{\Gamma}_{T-1}(z)) > \varepsilon > \delta > \log(1 + \delta)$$

so $z \in \tilde{D}_{T_R}$ for all $z \in \ell_R$. Consider the events

$$\Omega_R = \left\{ \sup_{n \leq T_R, z \in \ell_R} |\tilde{\Gamma}_n(z) - z + cn| < \varepsilon \right\}, \quad \Omega_0(m, \varepsilon) = \bigcap_{k=1}^M \Omega_{2(k+1)\varepsilon}.$$

We shall show that there is an absolute constant $C < \infty$ such that

$$\mathbb{P}(\Omega \setminus \Omega_R) \leq C\varepsilon^{-6/5}e^{-\varepsilon^3/(C\varepsilon)}, \tag{7}$$

from which it follows that

$$\mathbb{P}(\Omega \setminus \Omega_0(m, \varepsilon)) \leq C(cm/\varepsilon + 1)\varepsilon^{-6/5}e^{-\varepsilon^3/(C\varepsilon)} \leq C(m + \varepsilon^{-2})e^{-\varepsilon^3/(C\varepsilon)}.$$

Note that, on Ω_R , we have $|\tilde{\Gamma}_{T_R}(z) - z + cT_R| < \varepsilon$ for all $z \in \ell_R$, which forces $T_R = N$ and so $z \in \tilde{D}_n$ whenever $\operatorname{Re}(z) \geq R$ and $cn \leq R - 2\varepsilon$. Then, since $\tilde{\Gamma}_n(z) - z + cn$ is a bounded holomorphic function on \tilde{D}_n , we have on Ω_R ,

$$\sup_{cn \leq R - 2\varepsilon, \operatorname{Re}(z) \geq R} |\tilde{\Gamma}_n(z) - z + cn| = \sup_{cn \leq R - 2\varepsilon, z \in \ell_R} |\tilde{\Gamma}_n(z) - z + cn| < \varepsilon.$$

For $n \leq m$, we can choose k so that $R - 4\varepsilon \leq cn \leq R - 2\varepsilon$. Then, if $\operatorname{Re}(z) \geq cn + 4\varepsilon$, then $\operatorname{Re}(z) \geq R$, so on $\Omega_0(m, \varepsilon)$ we have $z \in \tilde{D}_n$ and $|\tilde{\Gamma}_n(z) - z + cn| < \varepsilon$. Moreover, on $\Omega_0(m, \varepsilon)$, the image $\tilde{\Gamma}_n(\ell_R)$ lies to the left of $\ell_{5\varepsilon}$, and hence, if $\operatorname{Re}(w) \geq 5\varepsilon$, we have $w = \tilde{\Gamma}_n(z)$ for some $\operatorname{Re}(z) \geq R$ so that

$$|\tilde{\Phi}_n(w) - w - cn| = |z - \tilde{\Gamma}_n(z) - cn| < \varepsilon.$$

We have shown that $\Omega_0(m, \varepsilon) \subseteq \Omega(m, \varepsilon)$, which implies the claimed estimate.

It remains to prove (7). The function $\tilde{G}_0(z) = \tilde{G}(z) - z$ is holomorphic, bounded and $2\pi i$ -periodic on \tilde{D} with $\tilde{G}_0(z) \rightarrow -c$ as $\operatorname{Re}(z) \rightarrow \infty$. Hence

$$\frac{1}{2\pi} \int_0^{2\pi} \tilde{G}_0(z - i\theta) d\theta = -c, \quad \operatorname{Re}(z) > \delta.$$

Let $q(r) = r \wedge r^2$. Then

$$|\tilde{G}_0(z) + c| \leq \frac{C_1c}{\operatorname{Re}(z) - \delta}, \quad |\tilde{G}'_0(z)| \leq \frac{2C_1c}{q(\operatorname{Re}(z) - \delta)}, \quad \operatorname{Re}(z) \geq 2\delta,$$

where C_1 is the absolute constant in (4). Set

$$M_n(z) = \tilde{\Gamma}_n(z) - z + cn, \quad z \in \tilde{D}_n.$$

Then

$$M_{n+1}(z) - M_n(z) = \tilde{G}_0(\tilde{\Gamma}_n(z) - i\Theta_{n+1}) + c.$$

So $(M_n(z))_{n \leq T}$ is a martingale for all $z \in \ell_R$. For $z \in \ell_R$ and $n \leq T - 1$,

$$|M_{n+1}(z) - M_n(z)| \leq \frac{C_1 c}{(\operatorname{Re}(\tilde{\Gamma}_n(z)) - \delta)} \leq \frac{C_1 c}{(R - cn - \varepsilon - \delta)}$$

and

$$\sum_{n=0}^{N-1} \frac{C_1^2 c^2}{(R - cn - \varepsilon - \delta)^2} \leq \int_0^{R-2\varepsilon} \frac{C_1^2 cds}{(R - s - \varepsilon - \delta)^2} = \frac{C_1^2 c}{\varepsilon - \delta} \leq \frac{2C_1^2 c}{\varepsilon}.$$

So, by the Azuma-Hoeffding inequality, for all $z \in \ell_R$,

$$\mathbb{P}\left(\sup_{n \leq T} |M_n(z)| \geq \varepsilon/2\right) \leq 2e^{-\varepsilon^3/(16C_1^2 c)}. \tag{8}$$

Fix $z, z' \in \ell_R$, define $\tilde{M}_n = M_n(z) - M_n(z')$ and set

$$f(n) = \mathbb{E}\left(\sup_{k \leq T \wedge n} |\tilde{M}_k|^2\right).$$

Note that $|\tilde{\Gamma}_n(z) - \tilde{\Gamma}_n(z')| \leq |z - z'| + |\tilde{M}_n|$ so, for $n \leq T - 1$,

$$|\tilde{M}_{n+1} - \tilde{M}_n| = |\tilde{G}_0(\tilde{\Gamma}_n(z) - i\Theta_{n+1}) - \tilde{G}_0(\tilde{\Gamma}_n(z') - i\Theta_{n+1})| \leq \frac{2C_1 c(|z - z'| + |\tilde{M}_n|)}{q(R - cn - \varepsilon - \delta)}.$$

Then, by Doob's L^2 -inequality,

$$f(n) \leq 4\mathbb{E}\left(|\tilde{M}_{T \wedge n}|^2\right) \leq 4 \sum_{k=0}^{n-1} \mathbb{E}(|\tilde{M}_{k+1} - \tilde{M}_k|^2 1_{\{k \leq T\}}) \leq 32C_1^2 c^2 \sum_{k=0}^{n-1} \frac{|z - z'|^2 + f(k)}{q(R - ck - \varepsilon - \delta)^2}$$

so, by a Gronwall-type argument,

$$\mathbb{E}\left(\sup_{n \leq T} |\tilde{M}_n|^2\right) = f(N) \leq |z - z'|^2 \left(\exp \int_{\varepsilon - \delta}^{\infty} \frac{32C_1^2 cds}{q(s)^2} - 1\right).$$

Now, for $r \in (0, 1]$,

$$\int_r^{\infty} \frac{ds}{q(s)^2} = \frac{1}{3} \left(2 + \frac{1}{r^3}\right)$$

and $\varepsilon/2 \leq \varepsilon - \delta \leq 1$ and $\varepsilon^3 \geq c$. So we deduce the existence of an absolute constant $16C_1^2 < C_2 < \infty$ such that $f(N) \leq C_2 c |z - z'|^2 / \varepsilon^3$. Hence by Kolmogorov's lemma,

C_2 may be chosen so that, for some random variable M , with $\mathbb{E}(M^2) \leq C_2c/\varepsilon^3$, we have

$$\sup_{k \leq T} |M_k(z) - M_k(z')| \leq M|z - z'|^{1/3}$$

for all $z, z' \in \ell_R$. So, by Chebyshev’s inequality, for any $L \in \mathbb{N}$,

$$\mathbb{P}\left(\sup_{k \leq T} |M_k(z) - M_k(z')| \geq \varepsilon/2 \text{ for some } z, z' \in \ell_R \text{ with } |z - z'| \leq \pi/L\right) \leq (\pi/L)^{2/3} 4C_2c/\varepsilon^5.$$

On combining this with (8), we obtain

$$\mathbb{P}(\Omega \setminus \Omega_R) \leq L e^{-\varepsilon^3/(C_2c)} + (\pi/L)^{2/3} 4C_2c/\varepsilon^5,$$

from which (7) follows on optimizing over L . \square

We note two consequences of the event $\Omega(m, \varepsilon)$. First we deduce an estimate for the normalized conformal maps Φ_n . On $\Omega(m, \varepsilon)$, for $n \leq m$ and $|z| = e^{5\varepsilon}$, we have

$$|\log(e^{-cn} \Phi_n(z)) - \log z| < \varepsilon$$

and so

$$|e^{-cn} \Phi_n(z) - z| < \varepsilon e^{6\varepsilon}.$$

The last estimate then holds whenever $|z| \geq e^{5\varepsilon}$ by the maximum principle.

Second, we show that on the event $\Omega(m, \varepsilon)$, for $n \leq m$ and $R \leq cn$, there is no disc of radius 56ε with centre on the line $\ell_R = \{z \in \mathbb{C} : \operatorname{Re}(z) = R\}$ which is disjoint from \tilde{K}_n . Since the sets \tilde{K}_n are increasing in n , we may assume that $R > c(n - 1)$. Fix $y \in \mathbb{R}$ and set $w = 6\varepsilon + iy$. Note that $|\tilde{\Phi}_n(w) - (R + iy)| < \varepsilon + |6\varepsilon + cn - R| < 7\varepsilon + c < 8\varepsilon$. Here we have used $c \leq 3\delta^2/4 \leq \delta/4 < \varepsilon$. By Cauchy’s integral formula

$$\tilde{\Phi}'_n(w) = 1 + \frac{1}{2\pi i} \int_{|z-w|=\varepsilon} \frac{\tilde{\Phi}_n(z) - z - cn}{(z - w)^2} dz$$

so $|\tilde{\Phi}'_n(w)| \leq 2$. Then, by Koebe’s 1/4 theorem,

$$d(\tilde{\Phi}_n(w), \partial \tilde{D}_n) \leq 4|\tilde{\Phi}'_n(w)|d(w, \partial \tilde{D}_0) \leq 48\varepsilon,$$

and so

$$d(R + iy, \partial \tilde{D}_n) \leq 56\varepsilon. \tag{9}$$

6. Harmonic Measure and the Location of Particles

In this section we obtain an estimate on the location of the particles $P_{n+1} = \Phi_n(e^{i\Theta_{n+1}}P)$ in the plane. From the preceding section, we know that $\Phi_n((1 + \varepsilon)e^{i\theta})$ is close to $(1 + \varepsilon)e^{cn+i\theta}$ with high probability, when ε is suitably large in relation to the particle radius δ . This must break down as $\varepsilon \rightarrow 0$, at least when particles are attached at a single point, since the map $\theta \mapsto \Phi_n(e^{i\theta})$ parametrizes the whole cluster boundary by harmonic measure. Nevertheless, we shall show that the approximation breaks down only on a set of very small harmonic measure, and in fact the whole of each particle P_{n+1} is close to $e^{cn+i\Theta_{n+1}}$, in a sense made precise below. Throughout this section, we assume that condition (2) holds and we make also the following *non-degenerate contact* condition

$$P \subseteq \{z \in \mathbb{C} : \text{Re}(z) > 1\}. \tag{10}$$

Lemma 6.1. *There is an absolute constant $C < \infty$ with the following properties. Let D^* be any simply connected neighbourhood of ∞ in D_0 and set $K^* = \mathbb{C} \setminus D^*$. Denote by μ the harmonic measure from ∞ in D^* of $K^* \setminus K_0$ and by N the number of connected components of $K^* \setminus K_0$. Then*

$$\mathbb{P}(K^* \cap K_1 \neq K_0) \leq CN\sqrt{\mu}. \tag{11}$$

Assume further that $16\pi\mu \leq \delta$. Then

$$\mathbb{P}(K^* \cap K_\infty \neq K_0) \leq CN\sqrt{\mu}/\delta.$$

Proof. By the estimate (6), each of the N connected components of $K^* \setminus K_0$ is contained in a disc of radius $8\pi\mu$ with centre on the unit circle. The non-degenerate contact assumption then allows us to choose $C_1 < \infty$ such that P_1 intersects that component only if $e^{i\Theta_1}$ lies in a concentric disc of radius $C_1\sqrt{\mu}$. The estimate (11) follows.

Consider a complex Brownian motion B with B_0 uniformly distributed on the circle of radius 2 centred at 0, and independent of Θ_1 . Set $r = 1 + \delta/2$ and note that $K^* \subseteq rK_0$. Set

$$T(K) = \inf\{t \geq 0 : B_t \in K\}.$$

Note that, since Θ_1 is uniformly distributed on $[0, 2\pi)$, the events $\{T(rK_0) \leq T(K_1)\}$ and $\{T(K^*) < T(K_0)\}$ are independent. We use the estimate (6) and our assumption that $1 + \delta \in P$ to obtain

$$\mathbb{P}(T(rK_0) \leq T(K_1)) \leq 1 - \delta/C_1.$$

Note that, since $T(rK_0) \leq T(K^*)$, we have

$$\{T(K^*) < T(K_1)\} \subseteq \{T(rK_0) \leq T(K_1)\} \cap \{T(K^*) < T(K_0)\}.$$

Hence

$$\mathbb{P}(T(K^*) < T(K_1)) \leq (1 - \delta/C)\mathbb{P}(T(K^*) < T(K_0)) = (1 - \delta/C_1)\mu.$$

Set

$$H_n = \mathbb{P}(T(K^*) < T(K_n)|\mathcal{F}_n)$$

and note that $H_0 = \mu$. By conformal invariance of Brownian motion, we have

$$H_n = \mathbb{P}(T(K_n^*) < T(K_0) | \mathcal{F}_n),$$

where $K_n^* = \Gamma_n(K^* \setminus K_n) \cup K_0$, and moreover

$$\mathbb{E}(H_{n+1} | \mathcal{F}_n) = \mathbb{P}(T(K_n^*) < T(K'_1) | \mathcal{F}_n),$$

where K'_1 is an independent copy of K_1 . Since $K_n^* \subseteq rK_0$, the argument of the preceding paragraph applies to show that $\mathbb{E}(H_{n+1} | \mathcal{F}_n) \leq (1 - \delta/C_1)H_n$. Hence $\mathbb{E}(H_n) \leq (1 - \delta/C_1)^n \mu$ for all n .

On the event $\{K^* \cap K_n = K_0\}$, the set $K_n^* \setminus K_0$ has N connected components, and its harmonic measure from ∞ in $\mathbb{C} \setminus K_n^*$ is H_n . Define $P'_1 = \Gamma_n(P_{n+1})$. Then P'_1 has the same distribution as P_1 and is independent of \mathcal{F}_n . So the argument leading to (11) applies to give

$$\mathbb{P}(K^* \cap P_{n+1} \neq \emptyset | \mathcal{F}_n) = \mathbb{P}(K_n^* \cap P'_1 \neq \emptyset | \mathcal{F}_n) \leq C_1 N \sqrt{H_n}.$$

Hence

$$\begin{aligned} \mathbb{P}(K^* \cap K_\infty \neq K_0) &\leq \sum_{n=0}^{\infty} \mathbb{P}(\{K^* \cap K_n = K_0\} \cap \{K^* \cap P_{n+1} \neq \emptyset\}) \\ &\leq \sum_{n=0}^{\infty} C_1 N \mathbb{E}(\sqrt{H_n}) \leq C_1^2 N \sqrt{\mu} / \delta. \end{aligned}$$

□

Write \tilde{P} for the connected component of $\tilde{K} \setminus \tilde{K}_0$ near 0. Set

$$\tilde{P}_n = \tilde{\Phi}_{n-1}(\tilde{P} + i\Theta_n), \quad \tilde{A}_n = \tilde{\Phi}_{n-1}(i\Theta_n).$$

Then \tilde{P}_n is a component of the $2\pi i$ -periodic set $\tilde{K}_n \setminus \tilde{K}_{n-1}$ and it is attached to \tilde{K}_{n-1} at \tilde{A}_n . For the next result, we shall use a further assumption on the particle P which allows us to prove that none of the sets \tilde{P}_n contain a certain size of fjord, even though they have been distorted by the maps $\tilde{\Phi}_{n-1}$. The useful form of this assumption is expressed in terms of harmonic measure. After stating this, we will give a geometrically more obvious sufficient condition. We assume the following *harmonic measure condition*.

For all sequences (z_1, w_1, z_2, w_2) of points in ∂P , listed anticlockwise, and for any interval I of ∂D_0 , if for $i = 1$ and $i = 2$ at least the $3/4$ of the harmonic measure on ∂D_0 from w_i is carried on I , then for either $i = 1$ or $i = 2$ at least $1/4$ of the harmonic measure on ∂D_0 from z_i is carried on I . (12)

This condition is implied by the following property of the image $\phi(P)$, where ϕ is the conformal map from D_0 to the upper half-plane H_0 , as in footnote 1. For $z = x + iy$ and $z' = x' + iy'$ in H_0 , write $S(z, z')$ for the smallest closed square in H_0 containing all the points $x - y, x + y, x' - y', x' + y'$. Then the preceding harmonic measure condition is implied by the following *square condition*. For all $z, z' \in \partial(\phi(P))$, at least one of the boundary arcs of $\partial(\phi(P))$ from z to z' is contained in $S(z, z')$. To see this, suppose $I \subseteq \mathbb{R}$ is an interval which carries at least $3/4$ of the harmonic measure on \mathbb{R} starting

from z , then $(x - y, x + y) \subseteq I$. Hence, if the same is true for z' , then $S(z, z') \cap \mathbb{R} \subseteq I$. Then, for any point $w \in S(z, z')$, I carries at least $1/4$ of the harmonic measure on \mathbb{R} starting from w . We have used here the fact that the harmonic measure on \mathbb{R} starting from i places equal mass on the intervals $(-\infty, -1)$, $(-1, 0)$, $(0, 1)$, $(1, \infty)$. It is easy to check the square condition for $P = (1, 1 + \delta]$ and $P = \{|z - 1 + \delta/2| = \delta/2\}$, when $\phi(P)$ is also a slit or a disc.

Consider for $\nu \in [0, \infty)$ the event

$$\Omega(m, \varepsilon, \nu) = \{\text{Re}(z) > c(n \wedge m) - \varepsilon\nu \text{ for all } z \in \tilde{P}_{n+1} \text{ and all } n \geq 0\} \cap \Omega(m, \varepsilon).$$

In conjunction with Proposition 5.1, the following estimate implies that, when $m = \lfloor \delta^{-6} \rfloor$ and $\varepsilon = \delta^{2/3} \log(1/\delta)$ and $\nu = (\log(1/\delta))^2$, the event $\Omega(m, \varepsilon, \nu)$ has high probability as $\delta \rightarrow 0$.

Proposition 6.2. *There exists an absolute constant $C < \infty$ such that, for all $\varepsilon \in [2\delta, 1]$ and $\nu \in [0, \infty)$,*

$$\mathbb{P}(\Omega(m, \varepsilon) \setminus \Omega(m, \varepsilon, \nu)) \leq Cm(m + \delta^{-1})e^{-\nu/C}.$$

Proof. We use the following Beurling estimate. There is an absolute constant $A \in [1, \infty)$ with the following property. For any $\eta \in (0, 1]$ and any connected set K in \mathbb{C} joining the circles of radius η and 1 about 0 , the probability that a complex Brownian motion, starting from 0 , leaves the unit disc without hitting K is no greater than $A\sqrt{\eta}$.

Fix $n \leq m$ with $\varepsilon\nu \leq cn$. Condition on \mathcal{F}_n and on $\Omega(n, \varepsilon)$. For all $z \in \mathbb{C}$ with $0 \leq \text{Re}(z) \leq cn$, there exists $w \in \tilde{K}_n$ such that $|z - w| \leq 56\varepsilon$. Set $\beta = 56A^2e^2$ and $\nu_0 = \lfloor \nu/(2\beta) \rfloor$. We assume without loss that $\nu_0 \geq 6$. Define $R(k) = cn - \beta\varepsilon k$ and note that $R(2\nu_0) \geq 0$. Fix $k \in \{0, 1, \dots, \nu_0 - 1\}$ and $z \in \ell_{R(k)}$ and consider a complex Brownian motion B starting from z . By the Beurling estimate, B hits $\ell_{R(k+1)}$ without hitting \tilde{K}_n with probability no greater than $A\sqrt{56/\beta} = e^{-1}$. Then, by the strong Markov property, for all $z \in \ell_{R(0)}$, almost surely on $\Omega(n, \varepsilon)$,

$$\mathbb{P}_z(B \text{ hits } \ell_{R(\nu_0)} \text{ before } \tilde{K}_n | \mathcal{F}_n) \leq e^{-\nu_0} \leq e^{-\nu/(2\beta)+1}. \tag{13}$$

There exists a family of disjoint open intervals $((\theta_j, \theta'_j) : j = 1, \dots, N_n)$ in $\mathbb{R}/(2\pi\mathbb{Z})$ such that, for $w_j = \tilde{\Phi}_n(i\theta_j)$ and $w'_j = \tilde{\Phi}_n(i\theta'_j)$, we have $\text{Re}(w_j) = \text{Re}(w'_j) = R(\nu_0)$ and $\bigcup_j (w_j, w'_j) + 2\pi i\mathbb{Z}$ disconnects $\tilde{D}_n \cap \ell_{R(2\nu_0)}$ from ∞ in \tilde{D}_n . We choose the unique such family minimizing $\sum_j |w_j - w'_j|$. Then $w_j \in \tilde{P}_{k(j)}$ for some $k(j) \leq n$ for all j . We shall show that the integers $k(1), \dots, k(N_n)$ must all be distinct, so $N_n \leq n$.

Suppose $k(j) = k(j') = k_0 + 1$ for some distinct j and j' . Then there exist $\alpha < \beta < \alpha' < \beta' < \alpha + 2\pi$ such that, for $z = \tilde{\Phi}_{k_0+1}(i\alpha)$, $z' = \tilde{\Phi}_{k_0+1}(i\alpha')$, $w = \tilde{\Phi}_{k_0+1}(i\beta)$ and $w' = \tilde{\Phi}_{k_0+1}(i\beta')$, we have $z, z', w, w' \in \partial\tilde{P}_{k_0+1}$ and $\text{Re}(z) = \text{Re}(z') = R(2\nu_0)$ and $\text{Re}(w) = \text{Re}(w') = R(\nu_0)$. Then, since we are on $\Omega(m, \varepsilon)$, we must have $c(k_0+1) + 4\varepsilon \geq R(\nu_0)$, so $ck_0 \geq R(\nu_0) - 4\varepsilon - c \geq R(\nu_0 + 1)$. Hence there exists an interval I of $\partial\tilde{D}_{k_0}$ with endpoints p, p' in $\ell_{R(3\nu_0/2)}$ such that z, z' are separated from $\partial\tilde{D}_{k_0} \setminus I$ by $I \cup [p, p']$. By a variation of the Beurling and strong Markov argument above, all but $e^{-\nu_0/2}$ of the harmonic measure on $\partial\tilde{D}_{k_0}$ starting from z is carried on I , and the same is true for z' . Then, by conformal invariance of harmonic measure, all but $e^{-\nu_0/2+1} < 1/4$ of the harmonic measure on $i\mathbb{R}$ starting from $\tilde{F}_{k_0+1}(i\alpha)$ is carried on $\tilde{\Gamma}_{k_0}(I)$, and the same is true for α' . So, by our harmonic measure condition, either more than $1/4$ of the harmonic

measure on $i\mathbb{R}$ starting from $\tilde{F}_{k_0+1}(i\beta)$ is carried on $\tilde{\Gamma}_{k_0}(I)$, or the analogous statement holds for β' . But, by the Beurling and strong Markov argument again, no more than $e^{-\nu_0/2+1} < 1/4$ of the harmonic measure on $\partial\tilde{D}_{k_0}$ starting from w is carried on I , and the same is true for w' . So, by conformal invariance, no more than $1/4$ of the harmonic measure on $i\mathbb{R}$ starting from $\tilde{F}_{k_0+1}(i\beta)$ is carried on $\tilde{\Gamma}_{k_0}(I)$, and the same is true for β' , a contradiction.

Each path $(\tilde{\Phi}_n(i\theta) : \theta \in (\theta_j, \theta'_j))$, together with the line segment $[w_j, w'_j]$, forms the boundary of a connected subset of \tilde{D}_n . Denote by S_n the union of these subsets. Define $K_n^* = \{e^{\tilde{\Gamma}_n(z)} : z \in S_n\} \cup K_0$ and $D_n^* = (\mathbb{C} \cup \{\infty\}) \setminus K_n^*$. Then D_n^* is a simply connected neighbourhood of ∞ in D_0 , the set $K_n^* \setminus K_0$ has N_n connected components and, by (13), the harmonic measure from ∞ of $K_n^* \setminus K_0$ in D_n^* is no greater than $e^{-\nu/(2\beta)+1}$. So, on $\Omega(n, \varepsilon)$,

$$\mathbb{P}((e^{i\Theta_{n+1}} P) \cap K_n^* \neq \emptyset | \mathcal{F}_n) \leq C_1 N_n e^{-\nu/(4\beta)+1/2},$$

where C_1 is the absolute constant from Lemma 6.1. But, if $e^{i\Theta_{n+1}} P$ does not meet K_n^* , then $\operatorname{Re}(z) > cn - \nu\varepsilon$ for all $z \in \tilde{P}_{n+1}$. Of course this inequality holds also in the case where $cn < \nu\varepsilon$.

It remains to deal with the case where $n \geq m + 1$. We may assume that $\nu \geq 2\beta \log(16\pi e/\delta)$ or the estimate is trivial. Then, for $\mu = e^{-\nu/(2\beta)+1}$, we have $16\pi\mu \leq \delta$. So we can apply Lemma 6.1 with $K^* = K_m^*$ to obtain, on $\Omega(m, \varepsilon)$,

$$\mathbb{P}(\operatorname{Re}(z) \leq cm - \varepsilon\nu \text{ for some } z \in \tilde{P}_{n+1} \text{ and some } n \geq m | \mathcal{F}_m) \leq C_1 N_m e^{-\nu/(4\beta)+1/2}/\delta.$$

The estimates we have obtained combine to prove the proposition. \square

Remark 6.3. An analogous result to Proposition 6.2 can be obtained by bounding the contribution to the length of the cluster boundary made by each particle. This extends the class of allowable basic particles beyond that specified by (12), but at the expense of a weaker bound on the probability.

Suppose that (2) and (10) hold and that, in addition, ∂P is rectifiable, with length L , and is given by $\beta : [0, L] \rightarrow \partial P$, where the parametrization is by arc length. We assume further that β is piecewise differentiable in such a way that there exist $C(\delta) \in (0, \infty)$, $k(\delta) \in \mathbb{N}$ and $0 = a_0 < a_1 < \dots < a_{k(\delta)} = L$ such that $r_i : (a_i, a_{i+1}) \rightarrow (1, 1 + \delta)$ given by $r_i(t) = |\beta(t)|$ is differentiable with $|r'_i(t)| > C(\delta)$ on (a_i, a_{i+1}) for all $i = 0, \dots, k(\delta) - 1$. Set $r(\delta) = k(\delta)/C(\delta)$. Let $\tilde{\ell}_{n+1}$ be the contribution to the length of the boundary of $\partial\tilde{K}_{n+1}$ that comes from particle \tilde{P}_{n+1} . Then

$$\tilde{\ell}_{n+1} = \int_0^L \frac{|\Phi'_n(\beta(t)e^{i\Theta_{n+1}})|}{|\Phi_n(\beta(t)e^{i\Theta_{n+1}})|} dt.$$

So, by a similar argument to that in the proof of Theorem 4 of [17],

$$\begin{aligned} \mathbb{E}(\tilde{\ell}_{n+1} | K_n) &= \sum_{i=0}^{k(\delta)-1} \int_0^{2\pi} \int_{a_i}^{a_{i+1}} \frac{|\Phi'_n(r_i(t)e^{i\theta})|}{|\Phi_n(r_i(t)e^{i\theta})|} dt d\theta \\ &\leq r(\delta) \int_0^{2\pi} \int_1^{1+\delta} \frac{|\Phi'_n(re^{i\theta})|}{|\Phi_n(re^{i\theta})|} dr d\theta \\ &\leq C_1 r(\delta)(c n \delta)^{1/2}, \end{aligned}$$

for some absolute constant $C_1 < \infty$. Therefore, if N_n is defined as in the proof of Proposition 6.2, for all $\zeta > 0$, $\mathbb{P}(N_n > \zeta) \leq \sum_{j=1}^n \mathbb{P}(\tilde{\ell}_j > \zeta \nu \varepsilon n^{-1}) \leq C_1 r(\delta) \delta^{3/2} n^{5/2} / (\zeta \nu \varepsilon)$. Hence, there exists some absolute constant $C < \infty$ such that

$$\mathbb{P}(\Omega(m, \varepsilon) \setminus \Omega(m, \varepsilon, \nu)) \leq C \zeta (m + \delta^{-1}) e^{-\nu/C} + C r(\delta) \delta^{3/2} m^{7/2} / (\zeta \nu \varepsilon).$$

On optimizing over ζ , it can be shown that there exists another absolute constant $C < \infty$ such that

$$\mathbb{P}(\Omega(m, \varepsilon) \setminus \Omega(m, \varepsilon, \nu)) \leq C r(\delta)^{1/2} m^{7/4} \delta^{3/4} \nu^{-1/2} \varepsilon^{-1/2} (m + \delta^{-1})^{1/2} e^{-\nu/C}.$$

Define for $z \in \tilde{D}_0$

$$N(z) = \inf\{n \geq 0 : z \notin \tilde{D}_n\}.$$

Denote by $\Omega(m, \varepsilon, \nu, \eta)$ the subset of $\Omega(m, \varepsilon, \nu)$ defined by the following condition: for all $z \in \tilde{D}_0 \cap \tilde{K}_\infty$ with $N(z) \leq m$ and all $n \leq N(z) - 1$, we have

$$|\text{Im}(\tilde{\Gamma}_n(z) - z)| < \varepsilon + 2\eta.$$

In conjunction with Propositions 5.1 and 6.2, the following estimate implies that, when $m = \lfloor \delta^{-6} \rfloor$ and $\varepsilon = \delta^{2/3} \log(1/\delta)$ and $\nu = (\log(1/\delta))^2$ and $\eta = \delta^{2/3} (\log(1/\delta))^6$, the event $\Omega(m, \varepsilon, \nu, \eta)$ has high probability as $\delta \rightarrow 0$.

Proposition 6.4. *There is an absolute constant $C < \infty$ such that, for all $\varepsilon \in [2\delta, 1/6]$, $\nu \in [0, \infty)$ and $\eta \in (0, \infty)$,*

$$\mathbb{P}(\Omega(m, \varepsilon, \nu) \setminus \Omega(m, \varepsilon, \nu, \eta)) \leq \frac{Cm}{\eta} \exp \left\{ -\frac{\eta}{C\delta} + \frac{C\nu\varepsilon\delta}{c} (1 + \log(1/\delta)) \right\}.$$

Proof. Fix $z \in \tilde{D}_0 \cap \tilde{K}_\infty$ with $N(z) \leq m$. Write $N_0(z)$ for the maximum of 0 and the largest integer such that $cN_0(z) \leq \text{Re}(z) - 4\varepsilon$. Write N_1 for the smallest integer such that $cN_1 \geq (\nu + 4)\varepsilon$. Then, on $\Omega(m, \varepsilon, \nu)$, we have $N(z) - 1 \leq N_0(z) + N_1$ and, since $\Omega(m, \varepsilon, \nu) \subseteq \Omega(m, \varepsilon)$, we have also $|\text{Im}(\tilde{\Gamma}_k(z) - z)| < \varepsilon$ for all $k \leq N_0(z)$.

We showed in Proposition 4.3 that, for some absolute constant $C_1 < \infty$, for $\alpha = C_1 \delta$ and for all $z \in \tilde{D}_0$ with $\text{Re}(z) \leq 1$,

$$\text{Im}(\tilde{G}(z)) \leq g^*(\text{Im}(z)),$$

where $g^*(\theta) = \theta + g_0^*(\theta)$ and g_0^* is the 2π -periodic function given by

$$g_0^*(\theta) = \frac{\alpha^2}{|\theta| \vee \alpha}, \quad \theta \in (-\pi, \pi].$$

Then, for $N_0(z) \leq n \leq N(z) - 1$,

$$\text{Im}(\tilde{\Gamma}_n(z)) \leq Y_n^{(n_0, y_0)},$$

where $n_0 = N_0(z)$, $y_0 = \text{Im}(\tilde{\Gamma}_{n_0}(z))$ and where, recursively for $n \geq n_0$, $Y_n = Y_n^{(n_0, y_0)}$ is defined by

$$Y_{n_0} = y_0, \quad Y_{n+1} = g^*(Y_n - \Theta_{n+1}) + \Theta_{n+1} = g_0^*(Y_n - \Theta_{n+1}) + Y_n.$$

Note that $\operatorname{Re}(\Gamma_n(z)) \leq \operatorname{Re}(\Gamma_{n_0}(z)) \leq |\operatorname{Re}(\Gamma_{n_0}) - \operatorname{Re}(z) + cn_0| + \operatorname{Re}(z) - cn_0 < 5\varepsilon + c < 1$. Hence, g_0^* is non-negative and g^* is non-decreasing, so $Y_n^{(n_0, y_0)}$ is non-decreasing in n and y_0 .

Set $M = \lceil 2\pi/\eta \rceil$ and $h = 2\pi/M$ so that $h \leq \eta$. Consider the set of time-space starting points

$$E = \{(n_0, jh) : n_0 \in \{0, 1, \dots, m\}, j \in \{0, 1, \dots, M - 1\}\},$$

and the event

$$\Omega_0 = \{Y_{n_0+N_1}^{(n_0, jh)} \leq jh + \eta \text{ for all } (n_0, jh) \in E\}.$$

Note that $|E| \leq Cm/\eta$, so

$$\mathbb{P}(\Omega \setminus \Omega_0) \leq Cm\mathbb{P}(Y_{N_1} > \eta)/\eta,$$

where $Y = Y^{(0,0)}$. Now

$$\begin{aligned} \mathbb{E}(e^{Y_1/\alpha}) &= \frac{1}{2\pi} \int_{-\pi}^{\pi} e^{g_0^*(\theta)/\alpha} d\theta = 1 + \frac{\alpha(e-1)}{\pi} + \frac{1}{\pi} \int_{\alpha}^{\pi} (e^{\alpha/\theta} - 1)d\theta \\ &\leq \exp\{(\alpha e/\pi)(1 + \log(\pi/\alpha))\}, \end{aligned}$$

so

$$\mathbb{P}(Y_{N_1} > \eta) \leq \exp\{-\eta/\alpha + (N_1\alpha e/\pi)(1 + \log(\pi/\alpha))\}.$$

Choose $j \in \{1, \dots, M\}$ so that $(j-1)h \leq y_0 \leq jh$. Then, for $n \leq N(z) - 1$, on Ω_0 ,

$$\operatorname{Im}(\tilde{\Gamma}_n(z)) \leq Y_n^{(n_0, jh)} \leq jh + \eta \leq \operatorname{Im}(\tilde{\Gamma}_{n_0}(z)) + 2\eta \leq \operatorname{Im}(z) + \varepsilon + 2\eta.$$

A similar argument allows us to bound the downward variation of $\operatorname{Im}(\tilde{\Gamma}_n(z))$ up to $N(z) - 1$. Hence $\mathbb{P}(\Omega(m, \varepsilon, \nu) \setminus \Omega(m, \varepsilon, \nu, \eta)) \leq 2\mathbb{P}(\Omega \setminus \Omega_0)$ which gives the claimed estimate. \square

Theorem 6.5. *Assume that the basic particle P satisfies conditions (2), (10) and (12). Consider for $\varepsilon_0 \in (0, 1]$ and $m \in \mathbb{N}$ the event $\Omega[m, \varepsilon_0]$ specified by the following conditions: for all $n \leq m$ and all $n' \geq m + 1$,*

$$|z - e^{cn+i\Theta_n}| \leq \varepsilon_0 e^{cn} \text{ for all } z \in P_n$$

and

$$\operatorname{dist}(w, K_n) \leq \varepsilon_0 e^{cn} \text{ whenever } |w| \leq e^{cn}$$

and

$$|z| \geq (1 - \varepsilon_0)e^{cm} \text{ for all } z \in P_{n'}.$$

Assume that $\varepsilon_0 = \delta^{2/3}(\log(1/\delta))^8$ and $m = \lfloor \delta^{-6} \rfloor$. Then $\mathbb{P}(\Omega[m, \varepsilon_0]) \rightarrow 1$ uniformly in P as $\delta \rightarrow 0$.

Proof. Set $\varepsilon = \delta^{2/3} \log(1/\delta)$ and $\nu = (\log(1/\delta))^2$ and $\eta = \delta^{2/3}(\log(1/\delta))^6$. We have shown that the event $\Omega(m, \varepsilon, \nu, \eta)$ has high probability as $\delta \rightarrow 0$. We complete the proof by showing that, for δ sufficiently small, the defining conditions for $\Omega[m, \varepsilon_0]$ are all satisfied on $\Omega(m, \varepsilon, \nu, \eta)$.

Fix $n \leq m$ and $z \in \tilde{P}_n$. On $\Omega(m, \varepsilon)$ we have $\text{Re}(z) < cn + 4\varepsilon$ and, restricting to $\Omega(m, \varepsilon, \nu)$, we have also $\text{Re}(z) > c(n-1) - \nu\varepsilon$. Restricting further to $\Omega(m, \varepsilon, \nu, \eta)$, we have $|\text{Im}(\tilde{\Gamma}_{n-1}(z) - z)| < \varepsilon + 2\eta$. But $\tilde{\Gamma}_{n-1}(z) \in \tilde{P} + 2\pi i \Theta_n$, so $|\tilde{\Gamma}_{n-1}(z) - 2\pi i \Theta_n| \leq \delta$. Hence, on $\Omega(m, \varepsilon, \nu, \eta)$, we have (since $\nu \geq 4$)

$$|e^z - e^{cn+2\pi i \Theta_n}| \leq e^{cn}(e^{\nu\varepsilon+c} - 1) + e^{cn+\nu\varepsilon+c}(\varepsilon + 2\eta + \delta).$$

We can choose δ sufficiently small that

$$(e^{\nu\varepsilon+c} - 1) + e^{\nu\varepsilon+c}(\varepsilon + 2\eta + \delta) \leq \varepsilon_0.$$

Then on $\Omega(m, \varepsilon, \nu, \eta)$ we have, for all $z \in P_n$,

$$|z - e^{cn+2\pi i \Theta_n}| \leq \varepsilon_0 e^{cn}.$$

Next, using (9), for $0 \leq \text{Re}(w) \leq cn$, on $\Omega(m, \varepsilon)$, there exists $z \in \tilde{K}_n$ with $|z - w| \leq 56\varepsilon$. Then $e^z \in K_n$ and

$$|e^z - e^w| \leq 56\varepsilon e^{cn+4\varepsilon}.$$

We can choose δ sufficiently small that

$$56\varepsilon e^{4\varepsilon} \leq \varepsilon_0.$$

Then $\text{dist}(w, K_n) \leq \varepsilon_0 e^{cn}$ whenever $|w| \leq e^{cn}$ and $n \leq m$.

Finally, for $n \geq m + 1$ and $z \in \tilde{P}_n$, on $\Omega(m, \varepsilon, \nu)$, we have $\text{Re}(z) > cm - \nu\varepsilon$. Hence $|w| > e^{cm-\nu\varepsilon} \geq (1 - \varepsilon_0)e^{cm}$ for all $w \in P_n$. \square

7. Weak Convergence of the Localized Disturbance Flow to the Coalescing Brownian Flow

We review in this section the main results of [16]. Denote by $\bar{\mathcal{D}}$ the set of all pairs $f = \{f^-, f^+\}$, where f^+ is a right-continuous, non-decreasing function on \mathbb{R} and where f^- is the left-continuous modification of f^+ . Denote by \mathcal{D} the subset of those $f \in \bar{\mathcal{D}}$ such that $x \mapsto f^+(x) - x$ is periodic of period 2π . Write id for the identity function $\text{id}(x) = x$ and, for $f \in \bar{\mathcal{D}}$, write f_0^\pm for the periodic functions $f^\pm - \text{id}$. Denote by \mathcal{D}^* the subset of \mathcal{D} where f_0 is not identically zero but has zero mean

$$\frac{1}{2\pi} \int_0^{2\pi} f_0(x) dx = 0.$$

Here and below, we drop the \pm where the quantity computed takes the same value for both versions. Fix $f \in \mathcal{D}^*$ and define $\rho = \rho(f) \in (0, \infty)$ by

$$\frac{\rho}{2\pi} \int_0^{2\pi} f_0(x)^2 dx = 1.$$

Let $(\Theta_n : n \in \mathbb{Z})$ be a sequence of independent random variables, all uniformly distributed on $[0, 2\pi)$. Define for each non-empty bounded interval $I \subseteq \mathbb{R}$ a pair of random functions $\Phi_I = \{\Phi_I^-, \Phi_I^+\}$ by

$$\Phi_I^\pm = f_{\Theta_n}^\pm \circ \dots \circ f_{\Theta_m}^\pm,$$

where $f_\theta^\pm(x) = f^\pm(x - \theta) + \theta$, and where m and n are, respectively, the smallest and largest integers in the rescaled interval ρI . If $\rho I \cap \mathbb{Z} = \emptyset$ then $\Phi_I = \text{id}$. Write $I = I_1 \oplus I_2$ if I_1, I_2 are disjoint intervals with $\sup I_1 = \inf I_2$ and $I = I_1 \cup I_2$. Note that the family $\Phi = (\Phi_I : I \subseteq \mathbb{R})$ has the following *flow property*:

$$\Phi_{I_2}^\pm \circ \Phi_{I_1}^\pm = \Phi_I^\pm, \quad \text{whenever } I = I_1 \oplus I_2. \tag{14}$$

Moreover (see [16]), almost surely, for all I , Φ_I^- is the left-continuous modification of Φ_I^+ , so $\Phi_I = \{\Phi_I^-, \Phi_I^+\} \in \mathcal{D}$. We call Φ the *disturbance flow with disturbance f* . For $\varepsilon \in (0, 1]$, we make the diffusive rescaling

$$\Phi_I^{\varepsilon, \pm}(x) = \varepsilon^{-1} \Phi_{\varepsilon^2 I}^\pm(\varepsilon x), \quad x \in \mathbb{R}$$

and call $(\Phi_I^\varepsilon : I \subseteq \mathbb{R})$ the ε -scale *disturbance flow with disturbance f* .

In order to formulate a weak convergence result about these disturbance flows, we introduce metrics on \mathcal{D} and $\bar{\mathcal{D}}$ and then we define certain metric spaces which will serve as state-spaces for Φ and Φ^ε . First, define for $f, g \in \mathcal{D}$,

$$d_{\mathcal{D}}(f, g) = \inf\{\varepsilon \geq 0 : f^+(x) \leq g^+(x + \varepsilon) + \varepsilon \text{ and } g^+(x) \leq f^+(x + \varepsilon) + \varepsilon \text{ for all } x \in \mathbb{R}\}.$$

For $f, g \in \bar{\mathcal{D}}$, define

$$d_{\bar{\mathcal{D}}}(f, g) = \sum_{n=1}^{\infty} 2^{-n} (d_n(f, g) \wedge 1),$$

where

$$d_n(f, g) = \inf\{\varepsilon \geq 0 : f^+(x) \leq g^+(x + \varepsilon) + \varepsilon \text{ and } g^+(x) \leq f^+(x + \varepsilon) + \varepsilon \text{ for all } x \in [-n, n - \varepsilon]\}.$$

Then $d_{\mathcal{D}}$ is a metric on \mathcal{D} and the metric space $(\mathcal{D}, d_{\mathcal{D}})$ is complete. In fact $(\mathcal{D}, d_{\mathcal{D}})$ is isometric to the set of periodic contractions on \mathbb{R} with period 2π , with supremum metric, by drawing new axes for the graph of $f \in \mathcal{D}$ at a rotation of $\pi/4$. Also, $d_{\bar{\mathcal{D}}}$ is a metric on $\bar{\mathcal{D}}$ and the metric space $(\bar{\mathcal{D}}, d_{\bar{\mathcal{D}}})$ is complete. See [16].

Consider now a family $\phi = (\phi_I : I \subseteq \mathbb{R})$, where $\phi_I \in \mathcal{D}$ and I ranges over all non-empty bounded intervals. Say that ϕ is a *weak flow* if,

$$\phi_{I_2}^- \circ \phi_{I_1}^- \leq \phi_I^- \leq \phi_I^+ \leq \phi_{I_2}^+ \circ \phi_{I_1}^+, \quad \text{whenever } I = I_1 \oplus I_2. \tag{15}$$

Say that ϕ is *cadlag* if, for all $t \in \mathbb{R}$,

$$d_{\mathcal{D}}(\phi_{(s,t)}, \text{id}) \rightarrow 0 \text{ as } s \uparrow t \quad \text{and} \quad d_{\mathcal{D}}(\phi_{(t,u)}, \text{id}) \rightarrow 0 \text{ as } u \downarrow t.$$

We write $D^\circ(\mathbb{R}, \mathcal{D})$ for the set of all cadlag weak flows. For the disturbance flow Φ , almost surely, for all $t \in \mathbb{R}$, for all sufficiently small $\varepsilon > 0$, we have $\Phi_{(t-\varepsilon, t)} =$

$\Phi_{(t,t+\varepsilon)} = \text{id}$. So Φ takes values in $D^\circ(\mathbb{R}, \mathcal{D})$. Define similarly $D^\circ(\mathbb{R}, \bar{\mathcal{D}})$ and note that Φ^ε takes values in $D^\circ(\mathbb{R}, \bar{\mathcal{D}})$.

Fix $\phi \in D^\circ(\mathbb{R}, \mathcal{D})$ and suppose that $\phi_{\{t\}} = \text{id}$ for all $t \in \mathbb{R}$. Then $\phi_{(s,t)} = \phi_{(s,t]} = \phi_{[s,t)} = \phi_{[s,t]}$ for all $s, t \in \mathbb{R}$ with $s < t$. Denote all these functions by ϕ_{ts} and set $\phi_{tt} = \text{id}$ for all $t \in \mathbb{R}$. The map

$$(s, t) \mapsto \phi_{ts} : \{(s, t) \in \mathbb{R}^2 : s \leq t\} \rightarrow \mathcal{D}$$

is then continuous. We write $C^\circ(\mathbb{R}, \mathcal{D})$ for the set of such *continuous weak flows* ϕ and we write $C^\circ(\mathbb{R}, \bar{\mathcal{D}})$ for the analogous subset in $D^\circ(\mathbb{R}, \bar{\mathcal{D}})$.

We can and do make $D^\circ(\mathbb{R}, \mathcal{D})$ and $D^\circ(\mathbb{R}, \bar{\mathcal{D}})$ into complete separable metric spaces by the choice of Skorokhod-type metrics, both denoted d_D . The metrics d_D have the following two further properties. The associated Borel σ -algebras coincide with those generated by the evaluation maps $\phi \mapsto \phi_I^+(x)$ as x ranges over \mathbb{R} and I ranges over bounded intervals in \mathbb{R} . Moreover, for any sequence $(\phi^n : n \in \mathbb{N})$ in $D^\circ(\mathbb{R}, \mathcal{D})$ and any $\phi \in C^\circ(\mathbb{R}, \mathcal{D})$, we have $d_D(\phi^n, \phi) \rightarrow 0$ if and only if $d_D(\phi_I^n, \phi_I) \rightarrow 0$ uniformly over subintervals I of compact sets in \mathbb{R} . In particular, $C^\circ(\mathbb{R}, \mathcal{D})$ is closed in $D^\circ(\mathbb{R}, \mathcal{D})$. Analogous statements hold in the non-periodic case. However, the flow property (14) is not preserved under limits in d_D . We refer to [16] for the specification of d_D .

The disturbance flow Φ with disturbance f is then a $D^\circ(\mathbb{R}, \mathcal{D})$ -valued random variable, and the law of Φ is a Borel probability measure on $D^\circ(\mathbb{R}, \mathcal{D})$, which we denote by μ_A^f . The ε -scale disturbance flow Φ^ε is a $D^\circ(\mathbb{R}, \bar{\mathcal{D}})$ -valued random variable, so the law of Φ^ε is a Borel probability measure on $D^\circ(\mathbb{R}, \bar{\mathcal{D}})$, which we denote by $\mu_A^{f,\varepsilon}$.

For $e = (s, x) \in \mathbb{R}^2$ and $\phi \in D^\circ(\mathbb{R}, \mathcal{D})$, the maps

$$t \mapsto \phi_{(s,t]}^-(x) : [s, \infty) \rightarrow \mathbb{R}, \quad t \mapsto \phi_{(s,t]}^+(x) : [s, \infty) \rightarrow \mathbb{R}$$

are cadlag. Hence we obtain measurable maps $Z^e = Z^{e,+}$ and $Z^{e,-}$ on $D^\circ(\mathbb{R}, \mathcal{D})$ with values in $D_e = D_x([s, \infty), \mathbb{R})$ by setting

$$Z^{e,\pm}(\phi) = (\phi_{(s,t]}^\pm(x) : t \geq s).$$

The restrictions of $Z^{e,\pm}$ to $C^\circ(\mathbb{R}, \mathcal{D})$ then take values in $C_e = C_x([s, \infty), \mathbb{R})$. We define a filtration $(\mathcal{F}_t)_{t \geq 0}$ on $D^\circ(\mathbb{R}, \mathcal{D})$ by

$$\mathcal{F}_t = \sigma(Z_r^e : e = (s, x) \in \mathbb{R}^2, r \in (-\infty, t] \cap [s, \infty))$$

and, for $e = (s, x), e' = (s', x') \in \mathbb{R}^2$, we write $T^{ee'}$ for the collision time

$$T^{ee'} = \inf\{t \geq s \vee s' : Z_t^e - Z_t^{e'} \in 2\pi\mathbb{Z}\}.$$

We make the same definitions for $\phi \in D^\circ(\mathbb{R}, \bar{\mathcal{D}})$, except to define as collision time

$$\bar{T}^{ee'} = \inf\{t \geq s \vee s' : Z_t^e = Z_t^{e'}\}.$$

The space $C^\circ(\mathbb{R}, \mathcal{D})$ is a convenient state-space for the coalescing Brownian flow on the circle where it has the following characterization (see [16, Thm. 6.1]). *There exists a unique Borel probability measure μ_A on $C^\circ(\mathbb{R}, \mathcal{D})$ such that, for all $e = (s, x), e' = (s', x') \in \mathbb{R}^2$, the processes $(Z_t^e)_{t \geq s}$ and $(Z_t^e Z_t^{e'} - (t - T^{ee'})^+)_t_{t \geq s \vee s'}$ are continuous local martingales in the filtration $(\mathcal{F}_t)_{t \in \mathbb{R}}$. Moreover, for all $e \in \mathbb{R}^2$, we have, μ_A -almost surely, $Z^{e,+} = Z^{e,-}$.*

Similarly, the space $C^\circ(\mathbb{R}, \bar{\mathcal{D}})$ is a state-space for the coalescing Brownian flow (on the line). *There exists a unique Borel probability measure $\bar{\mu}_A$ on $C^\circ(\mathbb{R}, \bar{\mathcal{D}})$ such that, for all $e = (s, x)$, $e' = (s', x') \in \mathbb{R}^2$, the processes $(Z_t^e)_{t \geq s}$ and $(Z_t^e Z_t^{e'} - (t - \bar{T}^{ee'})^+)_{t \geq s \vee s'}$ are continuous local martingales in the filtration $(\mathcal{F}_t)_{t \in \mathbb{R}}$. Moreover, for all $e \in \mathbb{R}^2$, we have, $\bar{\mu}_A$ -almost surely, $Z^{e,+} = Z^{e,-}$.*

We consider a limit where f becomes an increasingly well-localized perturbation of the identity map. We quantify this localization in terms of the smallest constant $\lambda = \lambda(f, \varepsilon) \in (0, 1]$ such that

$$\frac{\rho}{2\pi} \int_0^{2\pi} |f_0(x+a)f_0(x)|dx \leq \lambda, \quad a \in [\varepsilon\lambda, 2\pi - \varepsilon\lambda].$$

We can now state Theorem 6.1 from [16]. We have

$$\begin{aligned} \mu_A^f \rightarrow \mu_A \quad \text{weakly on } D^\circ(\mathbb{R}, \mathcal{D}) \text{ uniformly in } f \in \mathcal{D}^* \text{ as } \rho(f) \rightarrow \infty \\ \text{and } \lambda(f, 1) \rightarrow 0 \end{aligned} \tag{16}$$

and

$$\begin{aligned} \mu_A^{f,\varepsilon} \rightarrow \bar{\mu}_A \quad \text{weakly on } D^\circ(\mathbb{R}, \bar{\mathcal{D}}) \text{ uniformly in } f \in \mathcal{D}^* \text{ as } \varepsilon \rightarrow 0 \\ \text{with } \varepsilon^3 \rho(f) \rightarrow \infty \text{ and } \lambda(f, \varepsilon) \rightarrow 0. \end{aligned} \tag{17}$$

8. The Harmonic Measure Flow

We return to the aggregation model. We assume throughout this section that condition (2) holds. The boundary ∂K_n of the cluster K_n has a canonical parametrization by $[0, 2\pi)$ given by $\theta \mapsto \Phi_n(e^{i\theta})$. For $\theta_1 < \theta_2$, the normalized harmonic measure (from ∞) of the positively oriented boundary segment from $\Phi_n(e^{i\theta_1})$ to $\Phi_n(e^{i\theta_2})$ is then $(\theta_2 - \theta_1)/(2\pi)$. We consider the related parametrization $\theta \mapsto \tilde{\Phi}_n(i\theta) : \mathbb{R} \rightarrow \partial \tilde{K}_n$. For $m \leq n$, each point $z \in \partial \tilde{K}_n$ has a unique *ancestor point* $A_{mn}(z) \in \partial \tilde{K}_m$, which is either z itself or the point of $\partial \tilde{K}_m$ to which the particle containing z is attached, possibly through several generations. On the other hand, each point in $z \in \partial \tilde{K}_m$, except those points where particles are attached, has a unique *escape point* $E_{mn}(z) \in \partial \tilde{K}_n$, which is either z itself or is connected to z by a minimal path in \tilde{K}_n , subject to not crossing any particles nor passing through any attachment points. If P is attached at a single point, then $E_{mn}(z) = z$ for all $z \in \partial \tilde{K}_m$. These definitions are illustrated in Fig. 4.

We define the *forwards* and *backwards harmonic measure flows* on \mathbb{R} , respectively, for $0 \leq m < n$ by

$$\Phi_{nm}^P(x) = -i\tilde{\Gamma}_n \circ E_{nm} \circ \tilde{\Phi}_m(ix), \quad \Phi_{mn}^P(x) = -i\tilde{\Gamma}_m \circ A_{mn} \circ \tilde{\Phi}_n(ix). \tag{18}$$

We shall show that, when embedded suitably in continuous-time, these flows converge weakly to the coalescing Brownian flow, as the diameter δ of the basic particle P tends to 0. Then, in the same limiting regime, we shall deduce the behaviour of fingers and gaps in the aggregation model.

First we give an alternative presentation of the flows. Recall the functions g^+ and f^+ defined at (5) and write g^- and f^- for their left-continuous versions. Then $g =$

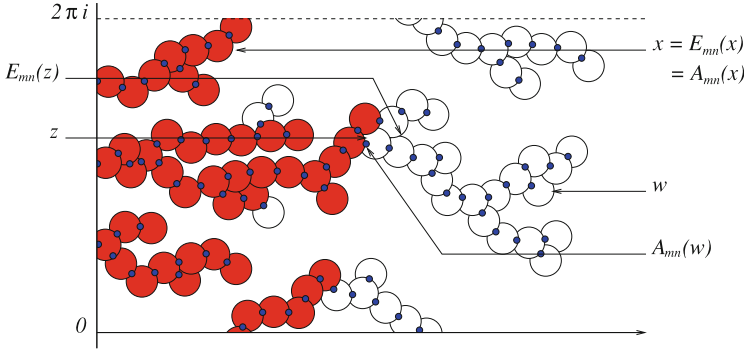


Fig. 4. Diagram illustrating ancestor points $A_{mn}(z) \in \partial \bar{K}_m$ for $z \in \partial \bar{K}_n$ and escape points $E_{mn}(z) \in \partial \bar{K}_n$ for $z \in \partial \bar{K}_m$, where \bar{K}_m is shown in red, $\bar{K}_n \setminus \bar{K}_m$ is shown in white, and attachment points are shown in blue (colour figure online)

$\{g^-, g^+\} \in \mathcal{D}$ and $f = \{f^-, f^+\} = g^{-1}$. Since P is non-empty and is invariant under conjugation, g is not the identity function but is an odd function. Hence $g \in \mathcal{D}^*$. Recall that the sequence of clusters $(K_n : n \geq 0)$ is constructed from a sequence of independent random variables $(\Theta_n : n \in \mathbb{N})$, uniformly distributed on $[0, 2\pi)$. Define $f_\theta, g_\theta \in \mathcal{D}$ for $\theta \in [0, 2\pi)$ as in Sect. 7. Then define for $0 \leq m < n$,

$$\Phi_{nm}^{P,\pm} = g_{\Theta_n}^\pm \circ \dots \circ g_{\Theta_{m+1}}^\pm, \quad \Phi_{mn}^{P,\pm} = f_{\Theta_{m+1}}^\pm \circ \dots \circ f_{\Theta_n}^\pm.$$

We can check (just as for the disturbance flow) that, almost surely, $\Phi_{nm}^P = \{\Phi_{nm}^{P,-}, \Phi_{nm}^{P,+}\} \in \mathcal{D}$ and $\Phi_{mn}^P = \{\Phi_{mn}^{P,-}, \Phi_{mn}^{P,+}\} \in \mathcal{D}$, with $(\Phi_{mn}^P)^{-1} = \Phi_{nm}^P$. Moreover, a straightforward induction shows that this definition agrees with the more geometric formulation in (18).

In formulating a limit statement, it is convenient to embed the harmonic measure flow in continuous time. We do this in two ways. For a bounded interval $I \subseteq [0, \infty)$, set $\Phi_I^P = \Phi_{nm}^P$, where $m + 1$ and n are respectively the smallest and largest integers in ρI . We set $\Phi_I^P = \text{id}$ if there are no such integers. Then $(\Phi_I^P : I \subseteq [0, \infty))$ takes values in $D^\circ([0, \infty), \mathcal{D})$. Set $\delta^* = (\rho c)^{-1}$ and define $\bar{\Phi}_I^P(x) = (\delta^*)^{-1/2} \Phi_{\bar{m}\bar{n}}^P((\delta^*)^{1/2}x)$, where $\bar{m} + 1$ and \bar{n} are the smallest and largest integers in $c^{-1}I$. Then $(\bar{\Phi}_I^P : I \subseteq [0, \infty))$ takes values in $D^\circ([0, \infty), \bar{\mathcal{D}})$.

Theorem 8.1. *Assume that the basic particle P satisfies condition (2). Then the harmonic measure flow $(\Phi_I^P : I \subseteq [0, \infty))$ converges weakly in $D^\circ([0, \infty), \mathcal{D})$ to the coalescing Brownian flow on the circle, uniformly in P as $\delta \rightarrow 0$. Moreover, the rescaled harmonic measure flow $(\bar{\Phi}_I^P : I \subseteq [0, \infty))$ converges weakly in $D^\circ([0, \infty), \bar{\mathcal{D}})$ to the coalescing Brownian flow on the line.*

Proof. The flow $(\Phi_I^P : I \subseteq [0, \infty))$ is a disturbance flow with disturbance g and $(\bar{\Phi}_I^P : I \subseteq [0, \infty))$ is an ε -scale disturbance flow with disturbance g , where $\varepsilon = \sqrt{\delta^*}$. From Corollary 4.2 we know that $\delta^2/6 \leq c \leq 3\delta^2/4$ and from Proposition 4.3, we have $\delta^{-3}/C \leq \rho \leq C\delta^{-3}$. Hence $\delta^* = (\rho c)^{-1}$ satisfies $\delta/C \leq \delta^* \leq C\delta$ for an absolute constant $C < \infty$. In particular $\rho \rightarrow \infty$ and $\varepsilon \rightarrow 0$ and $\varepsilon^3 \rho \geq \delta^{-3/2}/C \rightarrow \infty$ as $\delta \rightarrow 0$. Also, from Proposition 4.3, for $a \in [\delta, \pi]$, we have

$$\frac{\rho}{2\pi} \int_0^{2\pi} |g_0(\theta)g_0(\theta + a)|d\theta \leq \frac{C\delta}{a} \log\left(\frac{1}{\delta}\right),$$

so $\lambda(g, 1) \leq \lambda(g, \varepsilon) \rightarrow 0$ as $\delta \rightarrow 0$. The result thus follows from (16) and (17). \square

We can now deduce the limiting joint distribution of fingers and gaps. Recall that \mathcal{S} denotes the space of locally compact subsets of $[0, \infty) \times \mathbb{R}$, equipped with a local Hausdorff metric. We have fixed $T > 0$ and a finite subset E of $[0, T] \times \mathbb{R}$. Recall that we study the cluster K_N and have introduced in Sect. 3 associated path-like random sets $\text{finger}(z)$ and $\text{gap}(z)$, along with rescaled sets $\mathbb{F}(e), \bar{\mathbb{F}}(e), \mathbb{G}(e)$ and $\bar{\mathbb{G}}(e)$. Write μ_E^P for the law of $(\mathbb{F}(e), \mathbb{G}(e) : e \in E)$ when $N = \lfloor \rho T \rfloor$, considered as a random variable in $(\mathcal{S}^E)^2$. Similarly, write $\bar{\mu}_E^P$ for the law of $(\bar{\mathbb{F}}(e), \bar{\mathbb{G}}(e) : e \in E)$ when $N = \lfloor c^{-1}T \rfloor$. Write μ_E for the law on $(\mathcal{S}^E)^2$ of the family of random sets

$$(\{(t, \Phi_{ts(e)}(x(e))) : t \in [0, s(e)]\}, \{(t, \Phi_{t \wedge T, s(e)}(x(e))) : t \geq s(e)\} : e \in E),$$

where Φ is a coalescing Brownian flow on the circle and where we set $\Phi_{st} = \Phi_{ts}^{-1}$ for $s \leq t$. Write also $\bar{\mu}_E$ for the corresponding law when we replace Φ by a coalescing Brownian flow $\bar{\Phi}$ on the line.

Theorem 8.2. *Assume that the basic particle P satisfies conditions (2), (10) and (12). Then $\mu_E^P \rightarrow \mu_E$ and $\bar{\mu}_E^P \rightarrow \bar{\mu}_E$ weakly on $(\mathcal{S}^E)^2$, uniformly in P as $\delta \rightarrow 0$.*

Proof. We consider first the long time case. Given $\varepsilon_0 > 0$, there exist $\varepsilon > 0$ and $\varepsilon' \in (0, \varepsilon/3]$ such that, for any coalescing Brownian flow $\Phi = (\Phi_{ts} : 0 \leq s \leq t \leq T)$ on the circle, with probability exceeding $1 - \varepsilon_0/3$, for all $e \in E$ and all $t \in [0, T]$, we have

$$\Phi_{ts(e)}(x(e)) - \varepsilon_0 \leq \Phi_{ts(e)}(x(e) - 5\varepsilon) - 5\varepsilon, \quad \Phi_{ts(e)}(x(e) + 5\varepsilon) + 5\varepsilon \leq \Phi_{ts(e)}(x(e)) + \varepsilon_0$$

and, for all $s, s', t, t' \in [0, T]$ with $|s - s'|, |t - t'| \leq 3\varepsilon'$ and all $x \in \mathbb{R}$,

$$\Phi_{ts}(x) \leq \Phi_{t's'}(x + \varepsilon) + \varepsilon.$$

Note that these conditions imply $5\varepsilon \leq \varepsilon_0$. Here we have used some standard estimates for Brownian motion and the fact that the map $(s, t) \mapsto \Phi_{ts} : [0, T]^2 \rightarrow \mathcal{D}$ is uniformly continuous, almost surely. Here and below such inequalities are each to be understood as a pair of inequalities, one for left-continuous versions and the other for right-continuous versions.

Then, by Theorem 8.1, and using a standard result on weak convergence, there exists a $\delta_0 > 0$ such that, for all $\delta \in (0, \delta_0]$ and all basic particles P satisfying (2), for $N = \lfloor \rho T \rfloor$, we can construct, on some probability space, an $HL(0)$ process $\Phi^P = (\Phi_n^P : n \leq N)$ with basic particle P and a coalescing Brownian flow $\Phi = (\Phi_{ts} : 0 \leq s \leq t \leq T)$ on the circle with the following property. With probability exceeding $1 - \varepsilon_0/3$, for all $0 \leq m < n \leq N$, for $t = m/\rho$ and $s = n/\rho$, and for all $x \in \mathbb{R}$, we have

$$\Phi_{ts}(x - \varepsilon) - \varepsilon \leq \Phi_{mn}^P(x) \leq \Phi_{ts}(x + \varepsilon) + \varepsilon.$$

Here $(\Phi_{mn}^P : 0 \leq m < n \leq N)$ is the backwards harmonic measure flow of Φ^P (which determines $(\Theta_n : 1 \leq n \leq N)$ and hence Φ^P uniquely).

Moreover, by Theorem 6.5, we may choose δ_0 so that, with probability exceeding $1 - \varepsilon_0/3$, for all $e \in E$, writing $z(e) = \sigma^{-1}(e) = s(e)/\delta^* + ix(e)$ and $\sigma(p_0(z(e))) = (s_0, x_0)$, we have

$$|s_0 - s(e)| \leq \varepsilon'/3, \quad |x_0 - x(e)| \leq \varepsilon$$

and, for all $(s, x) \in [0, T] \times \mathbb{R}$, there exists $w \in \tilde{K}_N$ such that $\sigma(w) = (t, y)$ satisfies

$$|s - t| \leq \varepsilon'/3, \quad |x - y| \leq \varepsilon$$

and, for all $n \leq N - 1$ and all $z \in \tilde{P}_{n+1}$, $\sigma(z) = (s, x)$ satisfies

$$|s - n/\rho| \leq \varepsilon'/3, \quad |x - \Theta_{n+1}| \leq \varepsilon.$$

From this point on, we condition on the good event Ω_0 of probability exceeding $1 - \varepsilon_0$ where all of the properties discussed above hold. Suppose that we fix $j, k \in \mathbb{Z}$ and $m, n \leq N - 1$ and $w \in \tilde{P}_{m+1} + 2\pi ij$ and $z \in \tilde{P}_{n+1} + 2\pi ik$, with $\tilde{P}_{m+1} + 2\pi ij$ an ancestor particle of $\tilde{P}_{n+1} + 2\pi ik$. Write $\sigma(w) = (t, y)$ and $\sigma(z) = (s, x)$. Then we must have $m = \rho t' \leq n = \rho s'$, with $|s - s'|, |t - t'| \leq \varepsilon'/3$ and $|y - (\Theta_{m+1} + 2\pi j)|, |x - (\Theta_{n+1} + 2\pi k)| \leq \varepsilon$. Now Φ_{mn}^P is continuous and

$$\Theta_{m+1} + 2\pi j = \Phi_{mn}^P(\Theta_{n+1} + 2\pi k),$$

so

$$\begin{aligned} y &\leq \Theta_{m+1} + 2\pi j + \varepsilon = \Phi_{mn}^P(\Theta_{n+1} + 2\pi k) + \varepsilon \\ &\leq \Phi_{t's'}(\Theta_{n+1} + 2\pi k + \varepsilon) + 2\varepsilon \leq \Phi_{t's'}(x + 2\varepsilon) + 2\varepsilon \leq \Phi_{ts}(x + 3\varepsilon) + 3\varepsilon, \end{aligned}$$

and by a similar argument also $y \geq \Phi_{ts}(x - 3\varepsilon) - 3\varepsilon$. Here we have extended Φ by setting $\Phi_{ts} = \Phi_{t \wedge T, s \wedge T}$.

Fix $e \in E$ and $(t, y) \in \mathbb{F}(e)$. Write $(t, y) = \sigma(w)$ and $\tilde{P}_0(z(e)) = \tilde{P}_{n+1} + 2\pi ik$. We can choose $z \in \tilde{P}_0(z(e))$ with $\sigma(z) = (s, x)$ and $|s - s(e)| \leq \varepsilon'/3$ and $|x - x(e)| \leq \varepsilon$. Set $u = t \wedge s(e)$. Then w and z are related as in the preceding paragraph and

$$t \leq t' + \varepsilon'/3 \leq s' + \varepsilon'/3 \leq s + 2\varepsilon'/3 \leq s(e) + \varepsilon' \leq s(e) + \varepsilon_0$$

so $|t - u| \leq \varepsilon'$. Hence

$$y \leq \Phi_{ts}(x + 3\varepsilon) + 3\varepsilon \leq \Phi_{us(e)}(x + 4\varepsilon) + 4\varepsilon \leq \Phi_{us(e)}(x(e) + 5\varepsilon) + 5\varepsilon \leq \Phi_{us(e)}(x(e)) + \varepsilon_0,$$

and similarly

$$y \geq \Phi_{us(e)}(x(e)) - \varepsilon_0.$$

Since (t, y) was arbitrary, we have shown that

$$\begin{aligned} \mathbb{F}(e) &\subseteq \{(t, y) : t \in [0, s(e)] \text{ and } |y - \Phi_{ts(e)}(x(e))| \leq \varepsilon_0\} \\ &\quad \cup \{(t, y) : t \in [s(e), s(e) + \varepsilon_0] \text{ and } |y - x(e)| \leq \varepsilon_0\} \end{aligned}$$

and, since $\mathbb{F}(e)$ is a connected set joining (s, x) to the imaginary axis, this implies for the Hausdorff metric d_H that

$$d_H(\mathbb{F}(e), \{(t, \Phi_{ts(e)}(x(e))) : 0 \leq t \leq s(e)\}) \leq 2\varepsilon_0.$$

We complete the proof by obtaining an analogous estimate for $\mathbb{G}(e)$. Recall that $\mathbb{G}(e) = \{\sigma(p_\tau) : \tau \geq 0\}$, where $p = p(z(e))$ is the minimal length gap path starting from $p_0(z(e))$, the closest point to $z(e)$ which is not in the interior of \tilde{K}_N . Write $\sigma(p_0(z(e))) = (s_0, x_0)$.

First we show that minimal gap paths cannot backtrack too much. Suppose that $t < s(e) - \varepsilon'$ and p makes an excursion left of the line $\{t/\delta^* + iy : y \in \mathbb{R}\}$, with endpoints w^-, w^+ , say. Then the open line segment (w^-, w^+) must contain a point of \tilde{K}_N , say $w \in \tilde{P}_{m+1} + 2\pi ij$. Set $\sigma(w) = (t, y)$. Then, since p cannot cross \tilde{K}_N , there must exist $z \in \tilde{P}_{n+1} + 2\pi ik$, an ancestor particle of $\tilde{P}_{m+1} + 2\pi ij$, with $\sigma(z) = (s, x)$, say, and $s \geq s_0$. But then

$$s(e) \leq s_0 + \varepsilon'/3 \leq s + \varepsilon'/3 \leq n/\rho + 2\varepsilon'/3 \leq m/\rho + 2\varepsilon'/3 \leq t + \varepsilon' < s(e)$$

which is impossible. Hence there is no such excursion and so

$$\mathbb{G}(e) \subseteq \{(s, x) : s \geq s(e) - \varepsilon', x \in \mathbb{R}\}.$$

Consider $(t, y) = \sigma(w)$ with $w \in \tilde{P}_{m+1} + 2\pi ij$ and $m \leq N - 1$ and $t \geq s(e) - 3\varepsilon'$ and $y \geq \Phi_{vs(e)}(x(e)) + \varepsilon_0$, where $v = s(e) \vee t \wedge T$. Note that $t \leq T + \varepsilon'/3$ and $|v - t| \leq 3\varepsilon'$. Suppose $(s, x) = \sigma(z)$ with $z \in \tilde{P}_{n+1} + 2\pi ik$ and $|s - s(e)| \leq \varepsilon'$, and where $\tilde{P}_{n+1} + 2\pi ik$ is an ancestor particle of $\tilde{P}_{m+1} + 2\pi ij$. Then

$$x \geq \Phi_{st}(y - 3\varepsilon) - 3\varepsilon \geq \Phi_{s(e)v}(y - 4\varepsilon) - 4\varepsilon \geq x(e) + \varepsilon.$$

Hence $\mathbb{F}(t, y)$ does not meet the vertical half-line $\{(s_0, x) : x \leq x_0\}$.

Define

$$\Phi(e) = \{(t, \Phi_{t \wedge T, s(e)}(x(e))) : t \geq s(e)\}$$

and set $I = [s(e) - 2\varepsilon', T]$. There exists a continuous function $(y(t) : t \in I)$ such that, for all $t \in I$, setting $v = s(e) \vee t \wedge T$, we have

$$y(t) > \Phi_{vs(e)}(x(e)), \quad d((t, y(t)), \Phi(e)) = \varepsilon_0 + \varepsilon + 5\varepsilon'.$$

Define recursively a sequence τ_0, \dots, τ_M by setting $\tau_0 = s(e) - 2\varepsilon'$ and then taking τ_{n+1} as the supremum of the set

$$\{\tau \in [\tau_n, T] : |(\tau, y(\tau)) - (\tau_n, y(\tau_n))| = \varepsilon'\}$$

until $n = M - 1$ when this set is empty and we set $\tau_M = T$. For $n = 0, 1, \dots, M$, choose $w_n \in \tilde{K}_N$ with $\sigma(w_n) = (t_n, y_n)$ and $|t_n - \tau_n| \leq \varepsilon'$ and $|y_n - y(\tau_n)| \leq \varepsilon$. Note that $t_0 \leq s(e) - \varepsilon'$ and $t_M \geq T - \varepsilon'$ and $t_n \in [s(e) - 3\varepsilon', T + \varepsilon']$ for all n . Set

$$B_0 = \bigcup_{n=0}^{M-1} [w_n, w_{n+1}), \quad B_1 = \{t/\delta^* + iy_M : t \geq t_M\}, \quad B = B_0 \cup B_1.$$

Then, for any $w \in B_0$, for $(t, y) = \sigma(w)$, we have $|(t, y) - (\tau_n, y(\tau_n))| \leq \varepsilon + 2\varepsilon'$ for some n , so $\varepsilon_0 + 3\varepsilon' \leq d((t, y), \Phi(e)) \leq \varepsilon_0 + 2\varepsilon + 7\varepsilon'$ and so $y \geq \Phi_{vs(e)}(x(e)) + \varepsilon_0$, where $v = s(e) \vee t \wedge T$. The final inequality obviously extends to B .

Suppose p crosses B , and does so for the first time at $\tau(1)$. Consider first the case where $p_{\tau(1)} \in [w_n, w_{n+1})$. Then, since w_n and w_{n+1} are both connected to the imaginary axis in \tilde{K}_N and p cannot cross \tilde{K}_N , it must eventually hit $[w_n, w_{n+1}]$ again after $\tau(1)$, at

time $\tau(2)$ say, except possibly if $p_{\tau(1)} = w_n$. If the open line segment $(p_{\tau(1)}, p_{\tau(2)})$ contains a point $w \in \tilde{K}_N$ with $\sigma(w) = (t, y)$, then for all $z \in \text{finger}(w)$ with $\sigma(z) = (s, x)$ and $|s - s(e)| \leq \varepsilon'$ we have $x \geq x(e) + \varepsilon'$. But this is impossible because w is disconnected from the imaginary axis by $\{s_0/\delta^* + ix : x \leq x_0\} \cup \{p_\tau : \tau \geq 0\}$. Hence $(p_{\tau(1)}, p_{\tau(2)}) \subseteq \tilde{D}_N$, so $p_\tau \in [p_{\tau(1)}, p_{\tau(2)}]$ for all $\tau \in (\tau(1), \tau(2))$, contradicting our crossing assumption. In the case $p_{\tau(1)} = w_n$, if p does not return to $[w_n, w_{n+1}]$, then it must hit $[w_{n-1}, w_n]$ instead and this also leads to a contradiction by a similar argument. The case where $p_{\tau(1)} \in B_1$ also leads to a contradiction of minimality by a similar argument. Hence p never crosses B . So, for all $(t, y) \in \mathbb{G}(e)$ with $y \geq \Phi_{vs(e)}(x(e))$, we have $d((t, y), \Phi(e)) \leq \varepsilon_0 + 2\varepsilon + 7\varepsilon' \leq 2\varepsilon_0$. A similar argument establishes this estimate also in the case $y \leq \Phi_{vs(e)}(x(e))$. Since $\mathbb{G}(e)$ is a connected set joining (s_0, x_0) to $\{T\} \times \mathbb{R}$, this implies

$$d_H(\mathbb{G}(e), \Phi(e)) \leq 2\varepsilon_0.$$

We turn now to the local fluctuations. The argument is mainly similar. It becomes crucial that Theorem 6.5 provides approximation on a scale just larger than $\delta^{2/3}$, allowing us to transfer fluctuation results from Theorem 8.1 at scale $\delta^{1/2}$ to the cluster. There is also some loss of compactness in the local limit which requires attention.

Given $0 < \varepsilon_0 < 1/3$, there exist $\varepsilon > 0$ and $R \in [1, \infty)$ and $\varepsilon' \in (0, \varepsilon/3]$ such that, for any coalescing Brownian flow $\bar{\Phi} = (\bar{\Phi}_{ts} : 0 \leq s \leq t \leq T)$ on the line, with probability exceeding $1 - \varepsilon_0/3$, for all $e \in E$ and all $t \in [0, T]$, we have

$$|\bar{\Phi}_{ts(e)}(x(e))| \leq R,$$

and

$$\bar{\Phi}_{ts(e)}(x(e)) - \varepsilon_0 \leq \bar{\Phi}_{ts(e)}(x(e) - 5\varepsilon) - 5\varepsilon, \quad \bar{\Phi}_{ts(e)}(x(e) + 5\varepsilon) + 5\varepsilon \leq \bar{\Phi}_{ts(e)}(x(e) + \varepsilon_0)$$

and, for all $s, s', t, t' \in [0, T]$ with $|s - s'|, |t - t'| \leq 3\varepsilon'$ and all $|x| \leq 2R$,

$$\bar{\Phi}_{ts}(x) \leq \bar{\Phi}_{t's'}(x + \varepsilon) + \varepsilon.$$

Uniform continuity of the map $(s, t) \mapsto \bar{\Phi}_{ts} : [0, T]^2 \rightarrow \bar{\mathcal{D}}$ now provides only local estimates in x , hence the need for the cut-off R .

Then, by Theorem 8.1, there exists a $\delta_0 > 0$ such that, for all $\delta \in (0, \delta_0]$ and all basic particles P satisfying (2), for $N = \lfloor c^{-1}T \rfloor$, we can construct, on some probability space, an $HL(0)$ process $\Phi^P = (\Phi_n^P : n \leq N)$ with basic particle P and a coalescing Brownian flow $\bar{\Phi} = (\bar{\Phi}_{ts} : 0 \leq s \leq t \leq T)$ on the line with the following property. Write $(\Phi_{mn}^P : 0 \leq m < n \leq N)$ for the backwards harmonic measure flow of Φ^P and set $\bar{\Phi}_{mn}^P(x) = (\delta^*)^{-1/2} \Phi_{mn}^P((\delta^*)^{1/2}x)$. With probability exceeding $1 - \varepsilon_0/3$, for all $0 \leq m < n \leq N$, for $t = cm$ and $s = cn$, and for all $|x| \leq 2R$, we have

$$\bar{\Phi}_{ts}(x - \varepsilon) - \varepsilon \leq \bar{\Phi}_{mn}^P(x) \leq \bar{\Phi}_{ts}(x + \varepsilon) + \varepsilon.$$

Moreover, by Theorem 6.5, we may choose δ_0 so that, with probability exceeding $1 - \varepsilon_0/3$, for all $e \in E$, writing $z(e) = \bar{\sigma}^{-1}(e) = s(e) + i(\delta^*)^{1/2}x(e)$ and $\bar{\sigma}(p_0(z(e))) = (s_0, x_0)$, we have

$$|s_0 - s(e)| \leq \varepsilon'/3, \quad |x_0 - x(e)| \leq \varepsilon$$

and, for all $s \in [0, T]$ and all $x \in \mathbb{R}$, there exists $w \in \tilde{K}_N$ such that $\bar{\sigma}(w) = (t, y)$ satisfies

$$|s - t| \leq \varepsilon'/3, \quad |x - y| \leq \varepsilon,$$

and, for all $n \leq N - 1$ and all $z \in \tilde{P}_{n+1}$, $\bar{\sigma}(z) = (s, x)$ satisfies

$$|s - cn| \leq \varepsilon'/3, \quad |x - \Theta_{n+1}/\sqrt{\delta^*}| \leq \varepsilon.$$

From this point on, we condition on the good event Ω_0 of probability exceeding $1 - \varepsilon_0$ where all of the properties discussed above hold. Suppose that we fix $j, k \in \mathbb{Z}$ and $m, n \leq N - 1$ and $w \in \tilde{P}_{m+1} + 2\pi ij$ and $z \in \tilde{P}_{n+1} + 2\pi ik$, with $\tilde{P}_{m+1} + 2\pi ij$ an ancestor particle of $\tilde{P}_{n+1} + 2\pi ik$. Write $\bar{\sigma}(w) = (t, y)$ and $\bar{\sigma}(z) = (s, x)$ and suppose that $|x| + 2\varepsilon \leq 2R$. Then we must have $m = c^{-1}t' \leq n = c^{-1}s'$, with $|s - s'|, |t - t'| \leq \varepsilon'/3$ and $|y - (\Theta_{m+1} + 2\pi j)/\sqrt{\delta^*}|, |x - (\Theta_{n+1} + 2\pi k)/\sqrt{\delta^*}| \leq \varepsilon$, so

$$\begin{aligned} y &\leq (\Theta_{m+1} + 2\pi j)/\sqrt{\delta^*} + \varepsilon = \bar{\Phi}_{mn}^P((\Theta_{n+1} + 2\pi k)/\sqrt{\delta^*}) + \varepsilon \\ &\leq \bar{\Phi}_{t's'}((\Theta_{n+1} + 2\pi k)/\sqrt{\delta^*} + \varepsilon) + 2\varepsilon \leq \bar{\Phi}_{t's'}(x + 2\varepsilon) + 2\varepsilon \leq \bar{\Phi}_{ts}(x + 3\varepsilon) + 3\varepsilon, \end{aligned}$$

and by a similar argument also $y \geq \bar{\Phi}_{ts}(x - 3\varepsilon) - 3\varepsilon$. Here we have extended $\bar{\Phi}$ by setting $\bar{\Phi}_{ts} = \bar{\Phi}_{t \wedge T, s \wedge T}$.

Fix $e \in E$ and $(t, y) \in \bar{\mathbb{F}}(e)$. Write $(t, y) = \bar{\sigma}(w)$ and $\tilde{P}_0(z(e)) = \tilde{P}_{n+1} + 2\pi ik$. We can choose $z \in \tilde{P}_0(z(e))$ with $\bar{\sigma}(z) = (s, x)$ and $|s - s(e)| \leq \varepsilon'/3$ and $|x - x(e)| \leq \varepsilon$. In particular $|x| + 2\varepsilon \leq |x(e)| + 3\varepsilon \leq 2R$. Set $u = t \wedge s(e)$. Then w and z are related as in the preceding paragraph and

$$t \leq t' + \varepsilon'/3 \leq s' + \varepsilon'/3 \leq s + 2\varepsilon'/3 \leq s(e) + \varepsilon' \leq s(e) + \varepsilon_0$$

so $|t - u| \leq \varepsilon'$. Hence

$$y \leq \bar{\Phi}_{ts}(x + 3\varepsilon) + 3\varepsilon \leq \bar{\Phi}_{us(e)}(x + 4\varepsilon) + 4\varepsilon \leq \bar{\Phi}_{us(e)}(x(e) + 5\varepsilon) + 5\varepsilon \leq \bar{\Phi}_{us(e)}(x(e)) + \varepsilon_0$$

and similarly

$$y \geq \bar{\Phi}_{us(e)}(x(e)) - \varepsilon_0.$$

Since (t, y) was arbitrary, we have shown that

$$\begin{aligned} \bar{\mathbb{F}}(e) &\subseteq \{(t, y) : t \in [0, s(e)] \text{ and } |y - \bar{\Phi}_{ts(e)}(x(e))| \leq \varepsilon_0\} \\ &\quad \cup \{(t, y) : t \in [s(e), s(e) + \varepsilon_0] \text{ and } |y - x(e)| \leq \varepsilon_0\}, \end{aligned}$$

and, since $\bar{\mathbb{F}}(e)$ is a connected set joining (s, x) to the imaginary axis, this implies for the Hausdorff metric d_H that

$$d_H(\bar{\mathbb{F}}(e), \{(t, \bar{\Phi}_{ts(e)}(x(e))) : 0 \leq t \leq s(e)\}) \leq 2\varepsilon_0.$$

We complete the proof by obtaining an analogous estimate for $\bar{\mathbb{G}}(e)$. Recall that $\bar{\mathbb{G}}(e) = \{\bar{\sigma}(p_\tau) : \tau \geq 0\}$, where $p = p(z(e))$ is the minimal length gap path starting from $p_0(z(e))$, the closest point to $z(e)$ which is not in the interior of \tilde{K}_N . Write $\bar{\sigma}(p_0(z(e))) = (s_0, x_0)$.

Suppose that $t < s(e) - \varepsilon'$ and p makes an excursion left of the line $\{t + i\sqrt{\delta^*}y : y \in \mathbb{R}\}$, with endpoints w^-, w^+ , say. Then the open line segment (w^-, w^+) must contain a

point of \tilde{K}_N , say $w \in \tilde{P}_{m+1} + 2\pi ij$. Set $\bar{\sigma}(w) = (t, y)$. Then, since p cannot cross \tilde{K}_N , there must exist $z \in \tilde{P}_{n+1} + 2\pi ik$, an ancestor particle of $\tilde{P}_{m+1} + 2\pi ij$, with $\sigma(z) = (s, x)$, say, and $s \geq s_0$. But then

$$s(e) \leq s_0 + \varepsilon'/3 \leq s + \varepsilon'/3 \leq cn + 2\varepsilon'/3 \leq cm + 2\varepsilon'/3 \leq t + \varepsilon' < s(e)$$

which is impossible. Hence there is no such excursion and so

$$\bar{\mathbb{G}}(e) \subseteq \{(s, x) : s \geq s(e) - \varepsilon', x \in \mathbb{R}\}.$$

Consider $(t, y) = \bar{\sigma}(w)$ with $w \in \tilde{P}_{m+1} + 2\pi ij$ and $m \leq N - 1$ and $t \geq s(e) - 3\varepsilon'$ and $|y| + 3\varepsilon \leq 2R$ and $y \geq \bar{\Phi}_{vs(e)}(x(e)) + \varepsilon_0$, where $v = s(e) \vee t \wedge T$. Note that $t \leq T + \varepsilon'/3$ and $|v - t| \leq 3\varepsilon'$. Suppose $(s, x) = \bar{\sigma}(z)$ with $z \in \tilde{P}_{n+1} + 2\pi ik$ and $|s - s(e)| \leq \varepsilon'$ and where $\tilde{P}_{n+1} + 2\pi ik$ is an ancestor particle of $\tilde{P}_{m+1} + 2\pi ij$. Then

$$x \geq \bar{\Phi}_{st}(y - 3\varepsilon) - 3\varepsilon \geq \bar{\Phi}_{s(e)v}(y - 4\varepsilon) - 4\varepsilon \geq x(e) + \varepsilon.$$

Hence $\bar{\mathbb{F}}(t, y)$ does not meet the vertical half-line $\{(s_0, x) : x \leq x_0\}$.

Define

$$\bar{\Phi}(e) = \{(t, \bar{\Phi}_{t \wedge T, s(e)}(x(e))) : t \geq s(e)\}$$

and set $I = [s(e) - 2\varepsilon', T]$. There exists a continuous function $y(t) : I \rightarrow \mathbb{R}$ such that, for all $t \in I$, setting $v = s(e) \vee t \wedge T$, we have

$$y(t) > \bar{\Phi}_{vs(e)}(x(e)), \quad d((t, y(t)), \bar{\Phi}(e)) = \varepsilon_0 + \varepsilon + 5\varepsilon'.$$

Define recursively a sequence τ_0, \dots, τ_M by setting $\tau_0 = s(e) - 2\varepsilon'$ and then taking τ_{n+1} as the supremum of the set

$$\{\tau \in [\tau_n, T] : |(\tau, y(\tau)) - (\tau_n, y(\tau_n))| = \varepsilon'\}$$

until $n = M - 1$ when this set is empty and we set $\tau_M = T$. For $n = 0, 1, \dots, M$, choose $w_n \in \tilde{K}_N$ with $\bar{\sigma}(w_n) = (t_n, y_n)$ and $|t_n - \tau_n| \leq \varepsilon'$ and $|y_n - y(\tau_n)| \leq \varepsilon$. Note that $t_0 \leq s(e) - \varepsilon'$ and $t_M \geq T - \varepsilon'$ and $t_n \in [s(e) - 3\varepsilon', T + \varepsilon']$ and $|y_n| + 3\varepsilon \leq 2R$ for all n . Set

$$B_0 = \bigcup_{n=0}^{M-1} [w_n, w_{n+1}), \quad B_1 = \{t + i\sqrt{\delta^*}y_M : t \geq t_M\}, \quad B = B_0 \cup B_1.$$

Then, for any $w \in B_0$, for $(t, y) = \bar{\sigma}(w)$, we have $|(t, y) - (\tau_n, y(\tau_n))| \leq \varepsilon + 2\varepsilon'$ for some n , so $\varepsilon_0 + 3\varepsilon' \leq d((t, y), \bar{\Phi}(e)) \leq \varepsilon_0 + 2\varepsilon + 7\varepsilon'$ and so $y \geq \bar{\Phi}_{vs(e)}(x(e)) + \varepsilon_0$, where $v = s(e) \vee t \wedge T$. The final inequality obviously extends to B .

Suppose p crosses B , and does so for the first time at $\tau(1)$. Consider first the case where $p_{\tau(1)} \in [w_n, w_{n+1})$. Then, since w_n and w_{n+1} are both connected to the imaginary axis in \tilde{K}_N and p cannot cross \tilde{K}_N , it must eventually hit $[w_n, w_{n+1}]$ again after $\tau(1)$, at time $\tau(2)$ say, except possibly if $p_{\tau(1)} = w_n$. If the open line segment $(p_{\tau(1)}, p_{\tau(2)})$ contains a point $w \in \tilde{K}_N$ with $\bar{\sigma}(w) = (t, y)$, then for all $z \in \text{finger}(w)$ with $\bar{\sigma}(z) = (s, x)$ and $|s - s(e)| \leq \varepsilon'$ we have $x \geq x(e) + \varepsilon'$. But this is impossible because w is disconnected from the imaginary axis by $\{s_0 + i\sqrt{\delta^*}x : x \leq x_0\} \cup \{p_\tau : \tau \geq 0\}$. Hence $(p_{\tau(1)}, p_{\tau(2)}) \subseteq \tilde{D}_N$, so $p_\tau \in [p_{\tau(1)}, p_{\tau(2)}]$ for all $\tau \in (\tau(1), \tau(2))$, contradicting our crossing assumption. In the case $p_{\tau(1)} = w_n$, if p does not return to $[w_n, w_{n+1}]$, then it

must hit $[w_{n-1}, w_n]$ instead and this also leads to a contradiction by a similar argument. The case where $p_{\tau(1)} \in B_1$ also leads to a contradiction of minimality by a similar argument. Hence p never crosses B . So, for all $(t, y) \in \bar{\mathbb{G}}(e)$ with $y \geq \bar{\Phi}_{v_S(e)}(x(e))$, we have $d((t, y), \bar{\Phi}(e)) \leq \varepsilon_0 + 2\varepsilon + 7\varepsilon' \leq 2\varepsilon_0$. A similar argument establishes this estimate also in the case $y \leq \bar{\Phi}_{v_S(e)}(x(e))$. Since $\bar{\mathbb{G}}(e)$ is a connected set joining (s_0, x_0) to $\{T\} \times \mathbb{R}$, this implies

$$d_H(\bar{\mathbb{G}}(e), \bar{\Phi}(e)) \leq 2\varepsilon_0.$$

□

References

1. Ball, R.C., Brady, R.M., Rossi, G., Thompson, B.R.: Anisotropy and cluster growth by diffusion-limited aggregation. *Phys. Rev. Lett.* **55**, 1406–1409 (1985)
2. Bazant, M.Z., Crowdy, D.: Conformal mapping methods for interfacial dynamics. In: Yip, S. ed., *Handbook of Materials Modeling*, Berlin-Heidelberg-NewYork:Springer, 2005, pp. 1417–1451
3. Carleson, L., Makarov, N.: Aggregation in the plane and Loewner’s equation. *Commun. Math. Phys.* **216**(3), 583–607 (2001)
4. Carleson, L., Makarov, N.: Laplacian path models. *J. Anal. Math.* **87**, 103–150 (2002). (Dedicated to the memory of Thomas H. Wolff)
5. Davidovitch, B., Hentschel, H.G.E., Olami, Z., Procaccia, I., Sander, L.M., Somfai, E.: Diffusion limited aggregation and iterated conformal maps. *Phys. Rev. E* (3) **59**(2, part A), 1368–1378 (1999)
6. Eden, M.: A two-dimensional growth process. In: *Proc. 4th Berkeley Sympos. Math. Statist. and Prob. Vol. IV*, Berkeley, CA: Univ. California Press, 1961, pp. 223–239
7. Fontes, L.R.G., Isopi, M., Newman, C.M., Ravishanker, K.: The Brownian web: characterization and convergence. *Ann. Probab.* **32**(4), 2857–2883 (2004)
8. Hastings, M.B.: Fractal to nonfractal phase transition in the dielectric breakdown model. *Phys. Rev. Lett.* **87**, 175502 (2001)
9. Hastings, M.B., Levitov, L.S.: Laplacian growth as one-dimensional turbulence. *Physica D* **116**(1–2), 244 (1998)
10. Jensen, M.H., Levermann, A., Mathiesen, J., Procaccia, I.: Multifractal structure of the harmonic measure of diffusion-limited aggregates. *Phys. Rev. E* **65**, 046109 (2002)
11. Viklund, F.J., Sola, A., Turner, A.: Scaling limits of anisotropic Hastings-Levitov clusters. *Ann. Inst. H. Poincaré Probab. Stat.* **48**, 235–257 (2012)
12. Kesten, H.: Hitting probabilities of random walks on \mathbf{Z}^d . *Stoch. Proc. Appl.* **25**(2), 165–184 (1987)
13. Meakin, P., Ball, R.C., Ramanlal, P., Sander, L.M.: Structure of large two-dimensional square-lattice diffusion-limited aggregates: Approach to asymptotic behavior. *Phys. Rev. A* **35**, 5233–5239 (1987)
14. Niemeyer, L., Pietronero, L., Wiesmann, H.J.: Fractal dimension of dielectric breakdown. *Phys. Rev. Lett.* **57**(5), 650 (1986)
15. Norris, J., Turner, A.G.: *Planar aggregation and the coalescing Brownian flow*. <http://arxiv.org/abs/0810.0211v1> [math.PR], 2008
16. Norris, J., Turner, A.G.: *Weak convergence of the localized disturbance flow to the coalescing Brownian flow*. <http://arxiv.org/abs/1106.3252v3> [math.PR], 2012
17. Rohde, S., Zinsmeister, M.: Some remarks on Laplacian growth. *Topology Appl.* **152**(1-2), 26–43 (2005)
18. Witten, T.A., Sander, L.M.: Diffusion-limited aggregation, a kinetic critical phenomenon. *Phys. Rev. Lett.* **47**(19), 1400–1403 (1981)

Communicated by H. Spohn