

Quantitative profiling of oxylipins through comprehensive LC-MS/MS analysis: application in cardiac surgery

Katrin Strassburg · Annemarie M. L. Huijbrechts · Kirsten A. Kortekaas · Jan H. Lindeman · Theresa L. Pedersen · Adrie Dane · Ruud Berger · Arjan Brenkman · Thomas Hankemeier · John van Duynhoven · Eric Kalkhoven · John W. Newman · Rob J. Vreeken

Received: 2 May 2012 / Revised: 21 June 2012 / Accepted: 22 June 2012 / Published online: 20 July 2012
© The Author(s) 2012. This article is published with open access at Springerlink.com

Abstract Oxylipins, including eicosanoids, affect a broad range of biological processes, such as the initiation and resolution of inflammation. These compounds, also referred to as lipid mediators, are (non-) enzymatically generated by oxidation of polyunsaturated fatty acids such as arachidonic acid (AA). A plethora of lipid mediators exist which makes the development of generic analytical methods challenging. Here we developed a robust and sensitive targeted analysis platform

for oxylipins and applied it in a biological setting, using high performance liquid chromatography coupled to tandem mass spectrometry (HPLC-MS/MS) operated in dynamic multiple reaction monitoring (dMRM). Besides the well-described AA metabolites, oxylipins derived from linoleic acid, dihomo- γ -linolenic acid, α -linolenic acid, eicosapentaenoic acid and docosahexaenoic acid were included. Our comprehensive platform allows the quantitative evaluation of approximately

Katrin Strassburg, Annemarie M. L. Huijbrechts, Erik Kalkhoven, John W. Newman and Rob J. Vreeken have contributed equally to the work published in this paper.

Electronic supplementary material The online version of this article (doi:10.1007/s00216-012-6226-x) contains supplementary material, which is available to authorized users.

K. Strassburg · A. Dane · T. Hankemeier · R. J. Vreeken
Leiden Amsterdam Centre for Drug Research, Leiden University,
Einsteinweg 55,
2300 RA Leiden, The Netherlands

A. M. L. Huijbrechts · R. Berger · A. Brenkman · E. Kalkhoven
Department of Metabolic and Endocrine Diseases,
University Medical Centre Utrecht,
Utrecht, The Netherlands

K. Strassburg · A. M. L. Huijbrechts · A. Dane · R. Berger ·
A. Brenkman · T. Hankemeier · J. van Duynhoven ·
E. Kalkhoven · R. J. Vreeken
Netherlands Metabolomics Centre,
Einsteinweg 55,
2300 RA Leiden, The Netherlands

K. A. Kortekaas
Department of Cardiothoracic Surgery,
Leiden University Medical Center,
Albinusdreef 2-Dialyse BO-P,
2333 ZA Leiden, The Netherlands

J. H. Lindeman
Department of General Surgery,
Leiden University Medical Center,
Leiden, The Netherlands

T. L. Pedersen · J. W. Newman
USDA-ARS Western Human Nutrition Research Center,
430 West Health Sciences,
Davis, CA, USA

J. W. Newman
Department of Nutrition, University of California,
430 West Health Sciences,
Davis, CA, USA

J. van Duynhoven
Unilever Research and Development, Olivier van Noortlaan 120,
3133 AT Vlaardingen, The Netherlands

J. van Duynhoven
Laboratory of Biophysics, Wageningen University,
Dreijenlaan 3,
6703 HA Wageningen, The Netherlands

R. J. Vreeken (✉)
Department of Analytical BioSciences, Leiden
Amsterdam Centre for Drug Research, Leiden University,
Einsteinweg 55,
2300 RA Leiden, The Netherlands
e-mail: vreekenrj@lacdr.leidenuniv.nl

100 oxylipins down to low nanomolar levels. Applicability of the analytical platform was demonstrated by analyzing plasma samples of patients undergoing cardiac surgery. Altered levels of some of the oxylipins, especially in certain monohydroxy fatty acids such as 12-HETE and 12-HEPE, were observed in samples collected before and 24 h after cardiac surgery. These findings indicate that this generic oxylipin profiling platform can be applied broadly to study these highly bioactive compounds in relation to human disease.

Keywords HPLC-MS/MS · dMRM · 12-HETE · 12-HEPE

Introduction

Oxylipins are oxygenated metabolites derived from polyunsaturated fatty acids (PUFAs) such as arachidonic acid (AA), linoleic acid (LA), eicosapentaenoic acid (EPA), docosahexaenoic acid (DHA), and dihomo- γ -linolenic acid (DGLA). The oxygenated 20-carbon products, collectively referred to as eicosanoids, are the best-described lipid mediators. Among their many functions, these lipids are potent inflammatory modulators and thus have been associated with responses to cardiovascular diseases, host defense, tissue injury, and surgical intervention [1–3].

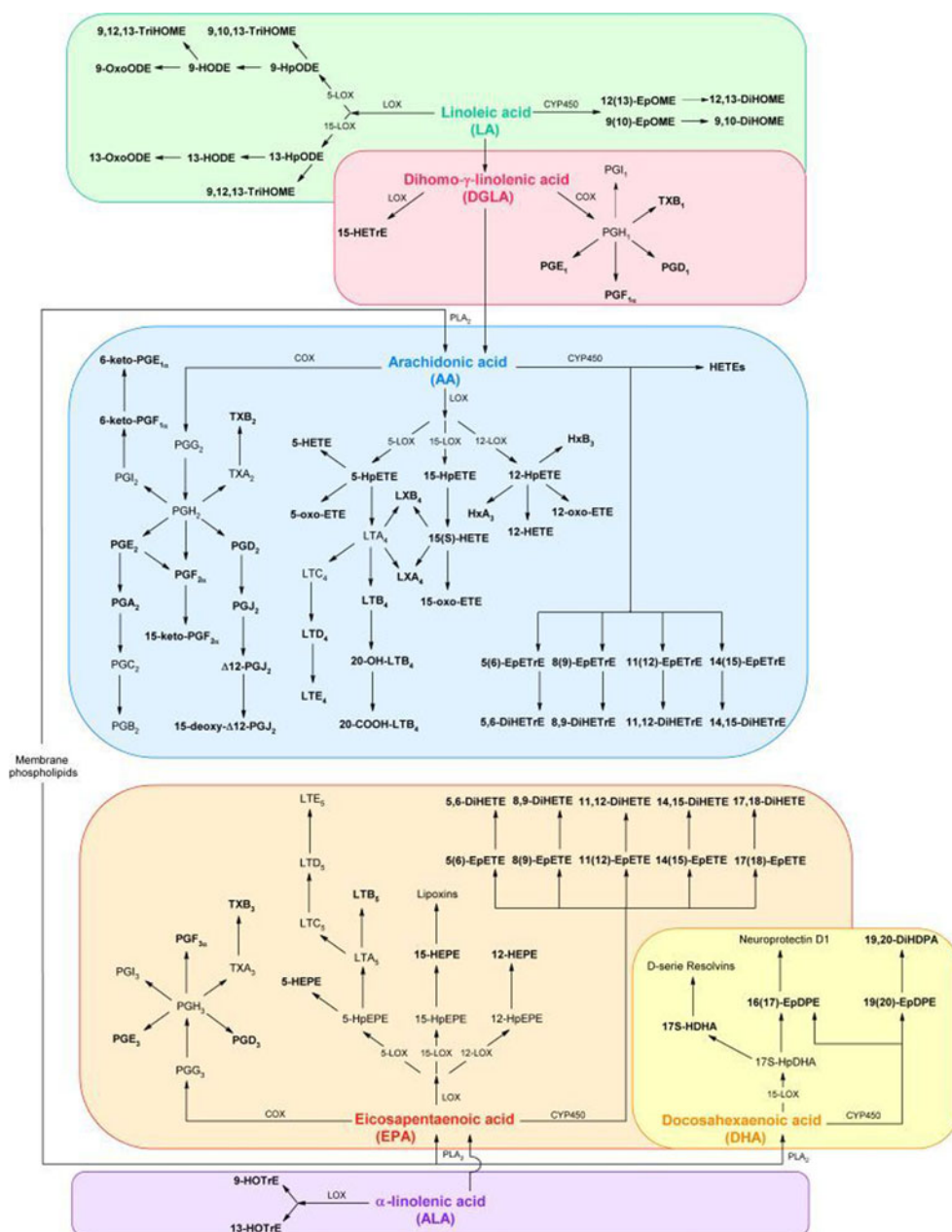
Through both, enzymatic and non-enzymatic oxidation processes, these PUFAs are transformed into a variety of oxylipins. They can be generated from the different precursor PUFAs by three main classes of enzymes—cyclooxygenase (COX), lipoxygenase (LOX), and cytochrome P450 (CYP450)—and thus form a complex pool of bioactive components (Fig. 1). Prostaglandins (PG) and thromboxanes (TX) are generated via the initial oxidation through COX pathways [4]. Prostanoids derived from AA are generally known as class 2 PGs and TXs due to their residual double-bond number, e.g., PGE₂ and TXB₂. Class 1 and 3 PGs and TX are similarly produced through the oxidation of DGLA and EPA, respectively [5]. Leukotrienes, likewise involved in pro-inflammatory signaling, especially in chemotaxis of leukocytes, are generated via the LOX pathways [4, 6]. In mammalian cells, three LOX hydroperoxidases families exist, 5-LOX, 15-LOX, and 12-LOX, from which 5-LOX generates leukotrienes. Other LOX-dependent products include the mid-chain alcohols such as the AA-derived hydroxyeicosatetraenoic acids (HETEs), as well as the LA-derived hydroxyoctadecadienoic acids (HODEs) and EPA-derived hydroxypentaenoic acids (HEPEs). HETEs are known to be bioactive lipid mediators in chemotaxis and degranulation processes of neutrophils [7–9]. Omega-terminal oxidation of these PUFAs by CYP450 yields additional metabolites such as epoxides, diols, and further HETEs. Epoxides derived from AA are known to be associated to cardiovascular functions, in particular acting as vasodilators of human coronary arteries [10, 11]. For epoxides derived from EPA, similar

functions are evident [12]. While conversion of the epoxy fatty acids to diols reduces their vasoactive properties, the diols themselves appear to have distinct functions, for instance as ligands of the peroxisome proliferator activated receptor alpha subtype (PPAR α) [13, 14].

Although several oxylipins have been allocated to regulatory functions, the biological impact for many others remains unclear. Therefore, the bioactive potential of the less well-characterized lipids, either as unique functions or interaction with structural analogs from different precursor PUFAs, is likely to provide a rich source of novel insights into the regulation of mammalian responses to disease and tissue injury. Covering a wide range of these highly bioactive compounds still remains a challenge with modern analytical techniques. As a common approach, immunoassays are performed, either as radioimmunoassay [15, 16], enzyme immunoassays [17], or luminescent immunoassays [18, 19]. They are specific and focus on one or only few compounds. Gas chromatography coupled to mass spectrometry (GC-MS) technology provides a sensitive methodology for a broad range of oxylipins [20]. However, to increase volatility, derivatization steps are essential. To avoid additional modifications, liquid chromatography-mass spectrometric (LC-MS) techniques are one of the most sensitive and specific tools to simultaneously study many analogous analytes. Numerous LC-MS/MS methods have been described in literature for identification and quantification of low abundant oxylipins using multiple reaction monitoring (MRM) as an ion selective mode. Many methods focus on certain component classes of oxylipins as for instance prostaglandins [21–23], non-prostanoid eicosanoids [24], COX and LOX derived eicosanoids [25, 26], CYP450 related compounds [27, 28], and AA derived lipid mediators including metabolites of all three pathways [29–31]. However, the bioactive lipids of different origins are produced within the same cascade and cross-linked in a complex regulatory network (Fig. 1). Thus, the complex combination of chemically and structurally related oxylipins derived from the different PUFAs has become a challenge in modern LC-MS/MS techniques [32–36]. The development of a generic analytical oxylipin platform, intended for the application to a variety of biological matrices, will provide valuable information on metabolites derived from different precursor PUFAs and contribute importantly to our knowledge on inflammation processes.

Within this work we expand these methods to include an even broader array of prostanoids while demonstrating the utility of dynamic multiple reaction monitoring (dMRM) mode to focus on short retention time windows and enhance sensitivity. We applied our platform to human plasma derived from patients a day before and 24 h after cardiac surgery. Previous studies have demonstrated involvement of eicosanoids in myocardial ischemia/reperfusion injury. Arachidonic acid accumulates in the reperfused heart after an ischemic period and levels of prominent eicosanoids like PGE₂, TXB₂, and 6-keto-PGF_{1 α}

Fig. 1 Biosynthesis of oxylipins derived from linoleic acid (LA; *green*), dihomo- γ -linolenic acid (DGLA; *red*), arachidonic acid (AA; *blue*), eicosapentaenoic acid (EPA; *orange*), docosahexaenoic acid (DHA; *yellow*), and α -linolenic acid (ALA; *purple*) via lipoxygenase (LOX), cyclooxygenase (COX), and cytochrome P450 (CYP450) pathways; PLA₂: phospholipase A₂; metabolites (*bold marked*) are included in the oxylipin library of the described analytical platform



change rapidly after reperfusion [37–39]. In this study, we focus on late phase (i.e., 24 h post surgery) changes in circulating eicosanoids and further demonstrate the applicability of this generic LC-MS/MS platform to monitor physiological levels of a broad range of eicosanoids and related metabolites derived from different PUFAs in human plasma.

Material and methods

Materials

Ultra performance liquid chromatography (UPLC)-grade acetonitrile, isopropanol, methanol, ethyl-acetate, and water

were purchased from Biosolve (the Netherlands). Glacial acetic acid was from Sigma-Aldrich (St. Louis, MO). High performance liquid chromatography (HPLC) was performed with the Ascentis Express C18 (2.1 × 150 mm, 2.7 μm) column from Sigma-Aldrich (St. Louis, MO). Solid phase extraction (SPE) was accomplished with Oasis HLB (60 mg/30 μm) cartridges from Waters (Milford, MA). Deuterated and non-deuterated oxylipin standards were purchased either from Cayman Chemicals (Ann Arbor, MI), Biomol (Plymouth Meeting, PA), or Larodan (Malmö, Sweden). Human EDTA-plasma for method validation was provided by Richmond Pharmacology Ltd. (London, UK).

Patient population

Oxylin profiling was performed on EDTA-plasma derived from patients before and after cardiac surgery. The study protocols were approved by the local ethics committee, and informed consent was obtained from each patient. All patients were male and with good left ventricular function and 55 (± 5.4) years of age with a BMI of 27.1 (± 4.1) kg/m². As patients develop a state of inflammation upon cardiac surgery, these patients provided a well controlled sample set to monitor levels of oxylin in their function as bioactive lipid mediators after cardiac surgery. During cardiac arrest (myocardial ischemia), cardiac surgery was executed with use of a heart–lung machine. After 124.2 (± 21.9) min of ischemia, the aortic cross-clamp was removed to restore cardiac blood flow (i.e., reperfusion).

To avoid any effects of heparin, such as increased levels of oxylin by heparin induced phospholipase A2 activity, described in literature [40, 41], samples collected during the period in which heparin was administered to the patient were not used. Heparin administered in conjunction with heart–lung machine use is neutralized by protamine sulfate, administered in the operating room directly after the surgical intervention. Based on our own confirmation of a heparin-dependent elevation in circulating oxylin (data not shown) and their response to protamine sulfate treatment, we chose to analyze samples taken the day before surgery (no heparin administered to the patient) and 24 h after reperfusion of the heart, when no influence of heparin could be detected. All baseline and 24 h post-reperfusion samples were taken at the same moment during the day, between 12:00 noon and 2:00 p.m., to reduce the potential impact of circadian rhythm-dependent cycling which can affect several oxylin. While they show a morning peak, the concentrations reduce during the day [42–44].

Oxylin extraction from human blood plasma

The samples (10 mL) were taken the day before surgery by venipuncture (baseline) from the brachial vein and 24 h after reperfusion from the radial artery. All samples were collected in pre-cooled tubes containing EDTA (BD Vacutainer, Plymouth, UK) and placed on melting ice immediately. Blood samples were centrifuged (1.550×g, 10 min, 4 °C) and the derived plasma supernatant was re-centrifuged (10.000×g, 4 min, 4 °C) to obtain leukocyte and thrombocyte poor plasma. Aliquots were stored at –80 °C until extraction. The extraction was performed as described previously [36]. For oxylin analysis 250 μ L aliquots were taken. After thawing on ice, the samples were treated immediately with antioxidants (0.2 mg BHT/EDTA) and spiked with 5 μ L of internal standards (ISTDs) of a concentration of 1,000 nM, resulting in 100 nM after reconstitution

which is within the linear range of the method. Compound extraction was performed with solid phase extraction using Oasis HLB (60 mg/30 μ m). Oxylin were eluted with 2 mL ethyl acetate after wetting the cartridge with 0.5 mL methanol. In contrast to Shearer and coauthors [36], the eluent was reduced under nitrogen stream instead under vacuum. The dried extract was subsequently reconstituted in 50 μ L solution of methanol and acetonitrile (1:1) containing 100 nM 1-cyclohexyluriedo-3-dodecanoic acid (CUDA) as a quality marker for the analysis. Afterwards, the extract was filtered by centrifugation using Amicon Ultrafree-MC Durapore PVDF filter (pore-size 0.1 μ m; Millipore, Bedford, MA).

Liquid chromatography and mass spectrometry

Samples were analyzed by liquid chromatography (Agilent 1260, San Jose, CA, USA) coupled to electrospray ionization on a triple quadrupole mass spectrometer (Agilent 6460, San Jose, CA, USA). For analysis 5 μ L of the extract was injected. The auto sampler was cooled at 10 °C. Chromatographic separation was achieved on an Ascentis Express (2.1×150 mm, 2.7 μ m particles; Sigma-Aldrich Supelco) column using a flow rate of 0.35 mL/min at 40 °C during a 26 min gradient (0–3.5 min from 15 % B to 33 % B, 3.5–5.5 min B to 38 %, 5–7 min to 42 % B, 7–9 min to 48 % B, 9–15 min to 65 % B, 15–17 min to 75 % B, 17–18.5 min to 85 % B, 18.5–19.5 min to 95 % B, from 19.5 to 21 min to 15 % B, 21–26 min 15 % B), while using the solvents A, 0.1 % acetic acid, and B, 90:10 v/v acetonitril/isopropanol. Electrospray ionization was performed in the negative ion mode using N₂ at a pressure of 35 psi for the nebulizer with a flow of 10 L/min and a temperature of 300 °C, respectively. The sheath gas temperature was 350 °C with a flow rate of 11 L/min. The capillary was set at 3,500 V and the nozzle voltage was 1,000 V.

To detect the individual oxylin, MRM in negative ion mode was performed with individually optimized fragmentor voltage and collision energies (Optimizer application, MassHunter, Agilent). MRM transitions were achieved by flow injection of pure standards and the optimizer application and were compared to literature when available for the certain compounds. The detailed list of MRM transitions can be found in the Electronic Supplementary Material Table S-1. Instead of defining certain time segments, with fixed dwell times per compound, dynamic MRM was used, assuring optimal dwell time and sufficient data points per peak.

Data preprocessing

Peak determination and peak area integration was performed with Mass Hunter Quan (Agilent, Version B.04.00) while auto-integration was manually inspected and corrected if necessary. The obtained peak areas of targets were corrected

by appropriate internal standards (ISTD) and calculated response ratios were used throughout the analysis.

Method validation

The method validation was performed as in-house 3-day protocol to determine linearity, LOD and LOQ, inter- and intra-day variation, reproducibility, matrix effect, and recovery for all compounds. Compound stability was not included in this validation, but is being performed in a dedicated experiment and currently ongoing (stability period up to 48 weeks at $-80\text{ }^{\circ}\text{C}$ without antioxidants). Preliminary data on this stability experiment showed no significant degradation over a period of 6 month (data not shown). We spiked pooled EDTA-plasma (Richmond Pharmacology, London, UK) with the purchased standard compounds in different concentrations varying from a minimum of 2 nM up to 558 nM in 8 levels (corresponding to levels of 3 to 1,260 pg; Electronic Supplementary Material Table S-2) to determine the linearity. Each calibration level was extracted twice and injected three times. Calibration curves were calculated by linear regression with $1/S^2$ weighing. Not all levels were included for each analyte. Only if a response was measured, i.e., for many analytes the low levels were not included. Furthermore, if the endogenous concentration was relatively high compared to the additionally spiked concentration, there is no difference in measured response when going to the next spiked level. For the calibration line, only levels were included if a significant response increase occurred from level to level. The responses were compared by means of *t* tests going from low to high level. For example, if the tests show

no significant differences between level C0 compared to level C1 and C1 versus C2 but a significantly higher response for C3 compared to C2 than the measurements for C0 and C1 were not included in the calibration line and C2 was the lowest included level. LOD and LOQ were determined by signal to noise ratio (S/N) higher 3 and 10, respectively. For the calculation of possible batch-to-batch effect, we compared three different concentrations, lower level (C3), middle (C5), and high level (C7). Three different batches were prepared at three following days. To determine the recovery of the oxylipins, we spiked the pooled plasma with 11 deuterated ISTDs prior to the extraction step and in parallel after the last step of the extraction procedure. The labeled standards are non-endogenous and can be distinguished from endogenous ones with mass spectrometry. The 11 chosen ISTDs were considered to be representative for the different compound classes. Recovery was calculated as $\text{Area}_{\text{spiked before}}/\text{Area}_{\text{spiked after}}$.

Results and discussion

A robust and sensitive quantitative method for profiling oxylipins such as eicosanoids and related lipid mediators biosynthesized from AA and other PUFAs was developed. As the majority of these compounds are present in plasma at low concentrations, their detection and quantification require methods with high sensitivity. Our LC-MS/MS method, employing dynamic MRM (dMRM), allows the evaluation of more than 100 oxylipins in a targeted approach (Fig. 2). The performance of dMRM allows the triple

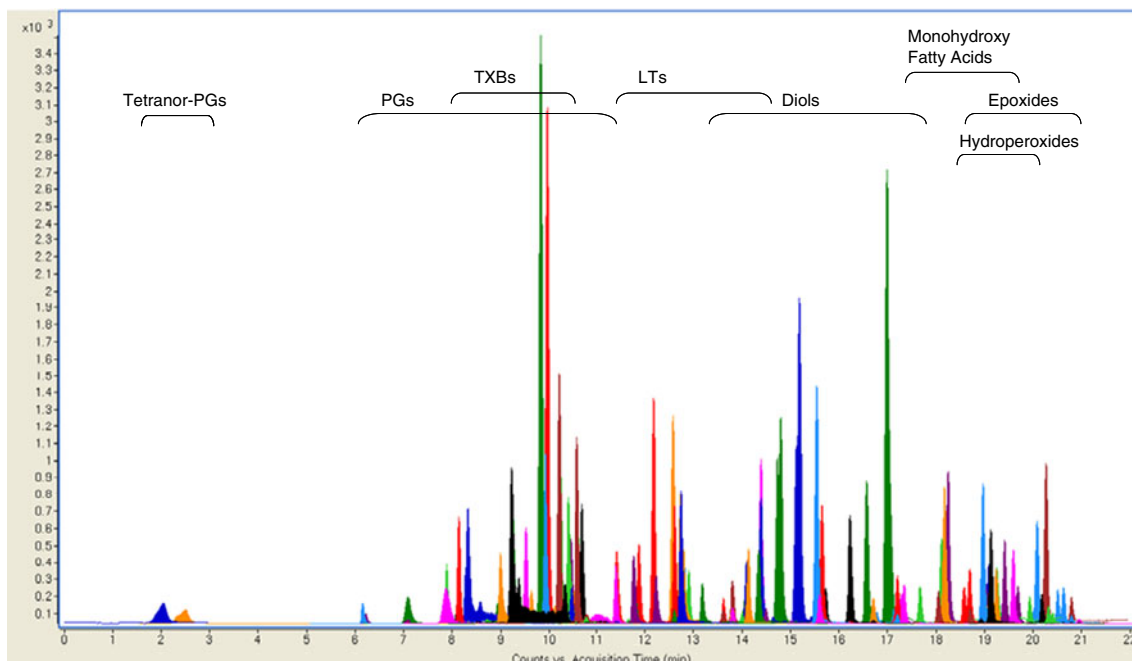


Fig. 2 LC-MS/MS chromatogram of 104 oxylipins performed on a triple quadrupole employing dynamic MRM in negative mode (exp. details; see the “Materials and methods” section and Table 2)

quadrupole system to be focused directly on the expected analyte retention time (t_R) with a defined detection window instead of user-defined time segments to capture groups of closely eluting compounds. Allowing a constant cycle time for each transition, the dMRM procedure improves peak symmetry. Moreover, since transitions are only monitored in the defined detection windows in contrast to the whole time period of a standard MRM time segment, the rate of false positive detection (i.e., peak misidentification) is diminished. This is especially relevant for oxylipin families, which encompasses many isomeric and isobaric compounds. Furthermore, sensitivity can be enhanced since optimal dwell times can be achieved by reducing overlapping ion transitions [45].

For each compound, optimal transitions were determined to assure optimal peak detection (Electronic Supplementary Material Fig. S-1 and Table S-1). In the case of co-eluting metabolites, compound specific precursor ions and their corresponding fragment ions allowed separation for selective detection and quantification of those compounds (Fig. 3). For instance, for 2,3-dinor-11 β -PGF $_{2\alpha}$ (m/z 325 \rightarrow 145) and 6-keto-PGF $_{1\alpha}$ (m/z 369 \rightarrow 163), both elute at t_R 7.89 min. Additional pairs were PGF $_{1\alpha}$ /9,10,13-TriHOME; 13,14-dihydro-15-keto-PGF $_{1\alpha}$ /1a,1b-dihomo-PGF $_{2\alpha}$; 8,15-DiHETE/12,13-DiHODE; 5,6-DiHETE/20-HETE; 13-HpODE/17(18)-EpETE; and 9-KODE/14(15)-EpETE (Fig. 3). For co-eluting isobars a unique fragment ion was chosen, as for 12-HETE (m/z 319 \rightarrow 179) and 8-HETE (m/z 319 \rightarrow 115), both eluting at t_R 19.24 (Fig. 3). However, some critical pairs could not be separated spectrally with the current method. Those compounds were 19-hydroxy-PGE $_2$ /20-hydroxy-PGE $_2$, 19-hydroxy-PGF $_{2\alpha}$ /20-hydroxy-PGF $_{2\alpha}$, as well as LTB $_4$ /12-epi LTB $_4$ and 6-trans-LTB $_4$ /6-trans-12-epi LTB $_4$. For detection and data evaluation, these compounds are therefore reported as combined amounts. For the hydroperoxides (HpETEs and HpODEs), we perceived a loss of an H $_2$ O molecule during ionization leading to $[M-H-H_2O]^-$. The water loss, especially for the hydroperoxides from AA, was also described previously [46].

Taken together, by employing dMRM and the detection of specified transitions in our HPLC-MS/MS approach, we were able to detect more than 100 different oxylipins.

Method validation

Validation measurements were performed using pooled EDTA-plasma as a sample matrix. Linearity, sensitivity (LOD and LOQ), reproducibility, matrix effect, and recovery were determined (Table 1 and Electronic Supplementary Material Table S-3).

Linearity and sensitivity The matrix samples (pooled plasma) were spiked with academic standards (eight concentrations).

We determined the linearity, LOD, and LOQ of each compound (104 targets). For the majority of the analytes, the R^2 ranged from 0.991 to 0.999, followed by 0.981–0.99 for 26 % and >0.9 for 17 % (Electronic Supplementary Material Table S-3). The range of LOQ was between 0.3 and 102 nM. For the majority of the targets (81 %), the LOQ was below 10 nM, for 56 % it was below 3 nM. Relatively high LOQs were observed for 5,6-Lipoxin A4 with values higher than 80 nM.

Reproducibility To examine reproducibility, intra- and inter-batch variability was assessed for all academic standards. A total of three batches were processed. In each batch duplicate extractions and triplicate injections were performed. In Table 1, oxylipins detected in human plasma are shown. The reproducibility values for all compounds are summarized in the Electronic Supplementary Material (Table S-3). For intra-batch effects (precision), the highest RSD value above the LOD was taken. For the oxylipins, the RSD values ranged from 4 % up to 15 % with exceptions for 20-HETE (41 %), 9,12,13-TriHOME (32 %), and 16(17)-EpDPE (21 %). The batch-to-batch effects were higher for the low concentration level, compared to the high concentration level for the oxylipin platform. As problematic compounds with batch-to-batch effects higher than 50 %, 15-keto PGF $_{1\alpha}$, PGK $_2$, Hepoxilin A $_3$, 5,6-Lipoxin A $_4$, LTE $_4$, 5-HpETE, 12-HpETE, 15-HpETE, 9-HpODE, 13-HpODE, and PGF $_{3\alpha}$ need to be noted (Electronic Supplementary Material Table S-3).

Matrix effect Matrix effect was evaluated by comparing extracts of spiked matrix with extracts of spiked blank matrix using water as blank matrix sample. Due to irreversible adsorption during SPE of the standards from water as compared to plasma, extreme low values (approximately 10 %) of the expected values were observed, prohibiting this approach to calculate matrix effects. Since water is not suitable as blank matrix, matrix variation tests are recommended before application to the various matrices. Although no matrix effect was determined, final concentrations were not effected as the calibration lines were made in matrix as well.

Recovery For the recovery calculations, a set of deuterated ISTDs was used to prevent endogenous influences. Therefore, the standards were spiked either before or after the extraction and ratios of the peak areas were calculated. Recoveries ranged from 84 % (± 4.4) to 45 % (± 5.8), depending on the compound (Fig. 4). The recoveries for monohydroxy compounds (i.e., HETEs and HODEs) were lower than those of more polar prostaglandins and thromboxane. For (d3) LTE $_4$, the recovery was lower than 60 %. In contrast to the other selected oxylipins, LTE $_4$ contains a cysteinyl group, and like LTDs and LTCs, it belongs to the cysteinyl leukotriens. While recoveries differed between chemical class, inter-batch

Fig. 3 LC-MS/MS extracted chromatograms of co-eluting oxylipins acquired by dynamic MRM. Retention time and specific MRM transitions are shown for each oxylipin

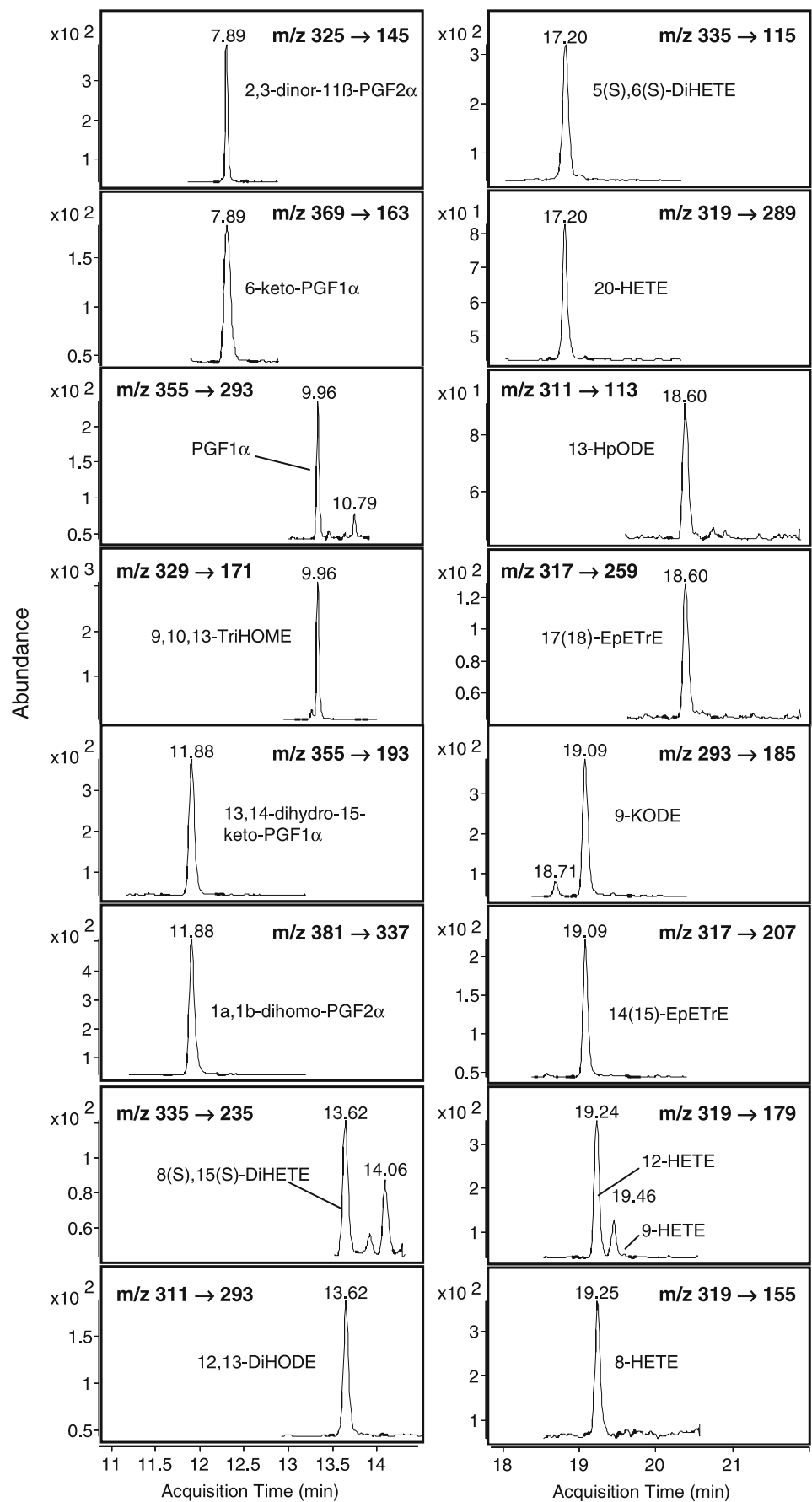


Table 1 Validation results of, in study samples, detected oxylipins

Compound name	Retention time	R^2	LOD [nM]	LOQ [nM]	Intra-batch effect RSD [%]	Batch-to-batch effect RSD [%]
Arachidonic acid						
TXB2	9.24	0.995	0.3	1.0	<7	13–22
PGF2 α	9.96	0.998	0.9	2.9	<10	4–15
PGE2	10.23	0.999	0.2	0.6	<13	4–20
11 β -PGE2	10.40	0.998	0.9	3.1	<8	3–19
13,14-dihydro PGF2 α	10.79	0.990	11.4	38.2	<8	12–26
14,15-DiHETrE	15.65	0.997	0.3	1.0	<6	2–21
11,12-DiHETrE	16.23	0.993	0.5	1.7	<12	6–21
8,9-DiHETrE	16.71	0.993	0.3	1.0	<15	10–17
5,6-DiHETrE	17.34	0.994	0.4	1.2	<9	7–21
15-HETE	18.58	0.982	0.2	0.8	<11	6–18
11-HETE	18.97	0.987	0.3	0.9	<9	4–21
12-HETE	19.24	0.986	0.2	0.6	<9	4–17
8-HETE	19.25	0.990	1.4	4.7	<8	8–21
5-HETE	19.69	0.988	0.2	0.6	<11	14–20
Linoleic acid						
9,12,13-TriHOME	9.83	0.946	0.2	0.8	<32	9–16
9,10,13-TriHOME	9.96	0.953	0.5	1.8	<10	10–17
12,13-DiHOME	14.80	0.975	0.3	1.0	<4	3–6
9,10-DiHOME	15.18	0.981	0.5	1.8	<8	5–9
13-HODE	18.12	0.940	4.2	13.9	<9	7–16
9-HODE	18.25	0.942	0.2	0.5	<7	7–22
13-HpODE	18.60	0.939	3.5	11.8	<6	23–72
13-KODE	18.70	0.978	0.7	2.4	<14	8–48
9-HpODE	18.71	0.953	8.7	29.1	<7	29–72
9-KODE	19.09	0.951	3.2	10.8	<11	10–30
12(13)-EpOME	20.08	0.964	2.5	8.4	<7	14–39
9(10)-EpOME	20.27	0.932	0.6	1.9	<11	10–38
Dihomo-gamma-linolenic acid						
PGF1 α	9.94	0.996	0.8	2.5	<14	5–12
15(S)-HETrE	19.41	0.988	0.5	1.7	<11	7–21
Alpha-linolenic acid						
9-HOTrE	16.57	0.967	0.3	1.1	<7	5–23
Eicosapentaenoic acid						
17,18-DiHETE	14.01	0.990	4.7	15.5	<11	8–26
14,15-DiHETE	14.49	0.993	0.8	2.7	<13	11–22
15(S)-HEPE	17.28	0.983	0.9	3.1	<13	11–19
12(S)-HEPE	17.67	0.985	0.3	0.9	<12	6–23
5(S)-HEPE	18.05	0.983	0.1	0.3	<12	8–24
Docosahexaenoic acid						
19,20-DiHDPA	15.60	0.991	1.7	5.7	<11	6–30
19(20)-EpDPE	19.93	0.988	1.2	4.0	<12	6–18

The table gives an overview about the acquired validation parameter linearity (R^2), sensitivity (LOD/LOQ) and reproducibility (precision and batch-to-batch effect). Validation data were achieved in pooled EDTA-plasma

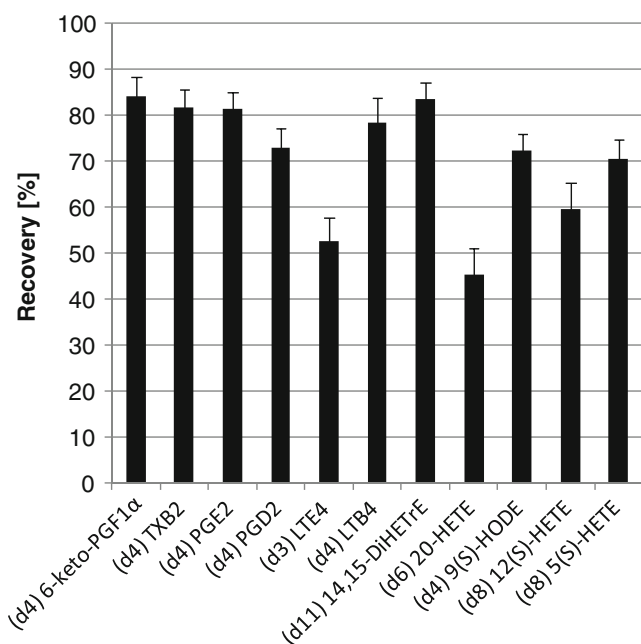


Fig. 4 Recovery of deuterated, non-endogenous oxylipins; the recovery is shown as percentage value; the compounds are arranged by their polarity, with the more polar ones on the left hand side

reproducibility was acceptable with RSD values between 4.3 % and 9.6 %, except for (d3) LTE₄ and (d6) 20-HETE with more than 10 % (10.3 % and 12.9 %).

In summary, the analytical oxylipin platform developed here is characterized by high sensitivity reaching nanomolar levels, linearity with acceptable R^2 , good reproducibility, and high coverage of oxylipin compounds.

Detection of oxylipins in human plasma

Applying the oxylipin profiling platform to human EDTA-plasma, we were able to detect 36 oxylipins derived from 6 different PUFAs (Table 1). The majority of oxylipins detected in plasma are assigned to AA and LA, followed by metabolites derived from EPA, DHA, DGLA, and ALA. All these metabolites are biosynthesized via the three enzymatic COX, LOX, and CYP450 pathways. As the most prominent metabolites of the COX pathway, prostaglandins PGE₂ and PGF_{2α} as well as the thromboxane B₂, derived from AA, were detected. Furthermore, the prostaglandin F_{1α} was detected, which is generated from DGLA as precursor, while no EPA derived 3 series prostanes were detected. The hydroxylated products of AA, LA, ALA, and DGLA represent a large target group in this analytical profile and are regulated by diverse sources in biological systems. For example, hydroxy lipids are generated in the LOX pathways (see Fig. 1), the COX pathways (e.g., LA metabolism by COX to HODEs [47, 48], as well as through non-enzymatic interactions of the PUFAs with reactive oxygen [49]. In addition, both epoxide and diol products from the CYP

epoxygenase-dependent metabolism of AA (e.g., 11,12-DiHETrE), LA (e.g., 9(10)-EpOME), EPA (e.g., 14,15-DiHETE), and DHA (19(20)-EpDPE and 19,20-DiHPDA) were detected (Table 2).

In the previous studies, it was demonstrated that a variety of oxylipins could be detected in human plasma [35, 36, 50, 51]. Our findings are in agreement with these reported profiles. In our hands though, remarkable variations were observed in profiles and actual concentration levels between plasma pools of different origin, sample handling, and storage (data not shown).

Comparing patient oxylipin concentrations before surgery revealed substantial variation between patients. Previous studies have shown that even when individuals have the same physical condition, gender, and health, their basal oxylipin concentrations can differ remarkably [52]. Nevertheless, we observed similar patterns in abundance and relationships between certain compounds (Fig. 5). For instance, the levels of PGF_{2α} and its metabolite 13,14-dihydro-PGF_{2α} were consistently higher in their relative abundance than levels of PGE₂ and its epimer 11β-PGE₂. The levels of TXB₂, the stable hydrolysis product of TXA₂, were lower compared to the prostaglandins and thus indicate lower levels of TXA₂. For CYP450 related compounds of the AA-pathway, 14,15-DiHETrE and 11,12-DiHETrE were found to be present at higher levels than 8,9-DiHETrE and 5,6-DiHETrE. Epoxides of the AA-pathway were below the detection limit and thus not detected in these samples. Also for the LA-pathway related oxylipins, a similarity in the basic abundance of the metabolites was observed. Although the epoxides and furthermore hydroperoxides originating from LA were detected above detection levels, they were less abundant compared to their subsequent derivatives.

Alterations in oxylipin profiles during cardiac surgery

All included patients were gender and age matched, and underwent the same surgical procedure. Twenty-four hours after surgery, the levels of CRP and IL-6 were significantly increased indicating an inflammatory response after the surgery (Fig. 6). The metabolic state of the AA pathway before and after cardiac surgery was monitored for each patient (Electronic Supplementary Material Fig. 2). Despite substantial inter-patient variation in oxylipin concentrations both before and after surgery, several consistent changes in the oxylipin profiles were observed. For the HETEs, compounds biosynthesized via the LOX pathway, a dramatic increase was visible, in particular for 12-HETE and 5-HETE (Fig. 7). The LOX products 12-HETE and 5-HETE are involved in chemotaxis of neutrophils [9, 53–55]. Activation and accumulation of neutrophils play key roles in inflammatory processes during ischemia–reperfusion injury [53, 56,

Table 2 Oxylipins detected in human plasma

LA	DGLA	AA	ALA	EPA	DHA
Prostanoids/thromboids					
	PGF1a	TXB2 PGF2a PGE2 11b-PGE2 13,14-dihydro-PGF2a			
Diols					
12,13-DiHOME		14,15-DiHETrE		17,18-DiHETE	19,20-DiHDPA
9,10-DiHOME		11,12-DiHETrE 8,9-DiHETrE 5,6-DiHETrE 5,15-DiHETE ^a 8,15-DiHETE ^a		14,15-DiHETE	
Epoxides					
12(13)-EpOME		14(15)-EpETrE ^a			19(20)-EpDPE
9(10)-EpOME		11(12)-EpETrE ^a 8(9)-EpETrE ^a 5(6)-EpETrE ^a			16(17)-EpDPE ^a
Alcohols					
9-HODE		12-HETE 5-HETE	9-HOTE	12-HEPE 5-HEPE	
13-HODE	15-HETrE	15-HETE 8-HETE 9-HETE ^a 20-HETE ^a 11-HETE 12-HHTrE ^a		15-HEPE	17-HDoHE ^a
Ketones					
13-KODE		15-KETE ^a			
9-KODE		5-KETE ^a			
Hydroperoxides					
13-HpODE		15-HpETE ^a			
9-HpODE		5-HpETE ^a			
Triols					
9,12,13-TriHOME					
9,10,13-TriHOME					

Compounds are assigned to their specific precursor fatty acid

^a Oxylin metabolite was detected in pooled EDTA-plasma, but not in EDTA-plasma of the study samples

57]. Due to its chemotactic properties, 12-HETE has been linked to healing processes during inflammation [58, 59]. Analysis of oxylin profiles after abdominal aortic aneurism repair also showed high levels of 12-HETE in

plasma 24 h after surgery for the group of patients which were in the resolution phase of inflammation [60].

Another 5-LOX generated compound LTB₄ also promotes the chemotaxis of neutrophils [4, 6, 53, 56, 57,

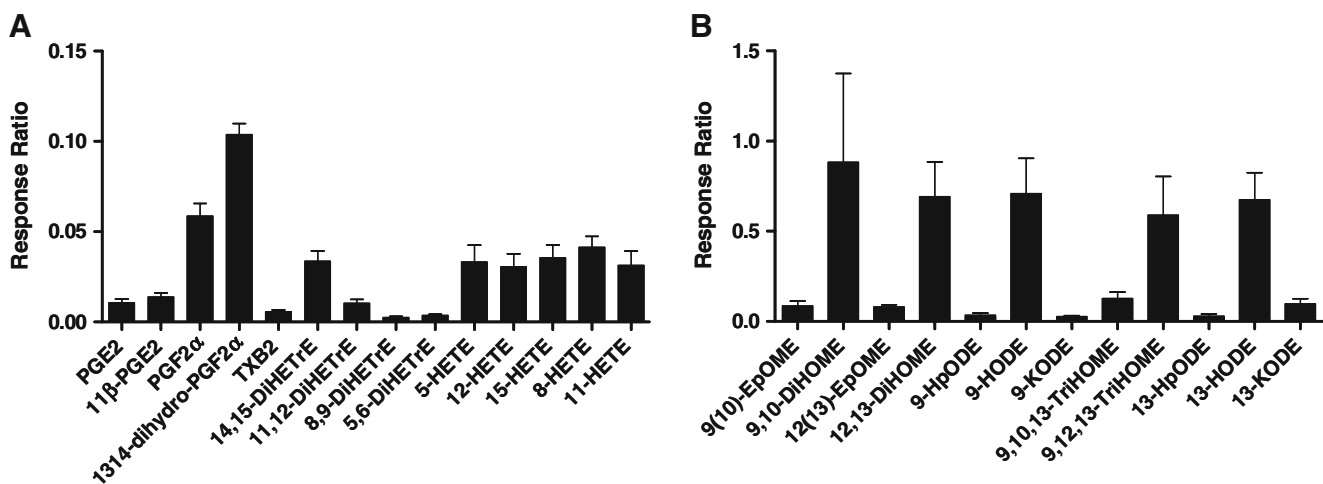


Fig. 5 Baseline level of oxylipins detected in patients undergoing cardiac surgery ($n=5$); the majority of assigned oxylipins are from two pathways, (A) metabolites derived from arachidonic acid (AA)

and (B) metabolites generated from linoleic acid (LA); each graph shows the relative abundance of oxylipins, plotted as relative response ratios (obtained abundance corrected by appropriated ISTDs)

Fig. 6 CRP- and IL-6 levels before and after surgery; (a) CRP levels ($n=5$), after surgery the CRP levels increased dramatically; (b) IL-6 levels ($n=5$), also for IL-6 levels a significant increment after surgery was observed

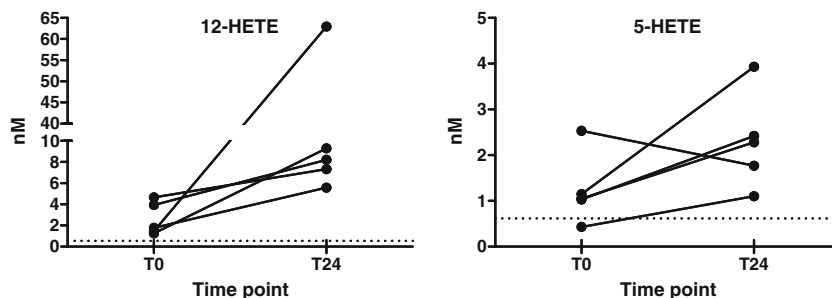
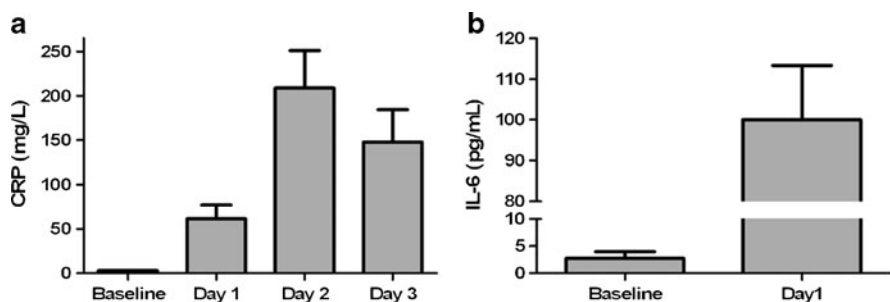


Fig. 7 The pairplot demonstrates the abundance of the two monohydroxy fatty acids 12-HETE and 5-HETE at baseline levels before the surgery (T0) and 24 h after the surgery (T24) of the patients ($n=5$);

both oxylipins are enzymatically generated via lipoxygenase (12-LOX and 5-LOX, respectively) from arachidonic acid as precursor PUFA; dotted lines represent the limit of quantification

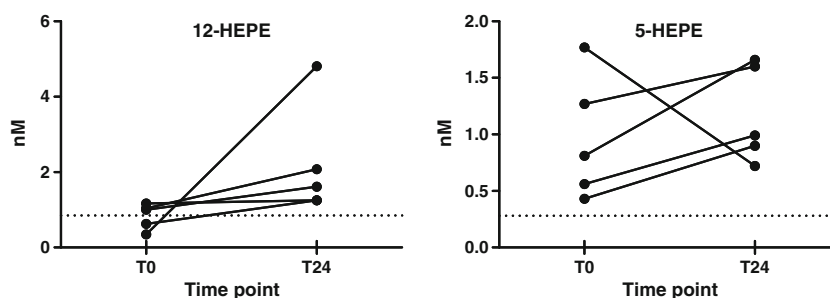


Fig. 8 The pairplot demonstrates the abundance of the two monohydroxy fatty acids 12-HEPE and 5-HEPE at baseline levels before the surgery (T0) and 24 h after the surgery (T24) of the patients ($n=5$);

both are generated from eicosapentaenoic acid, biosynthesized by 12-LOX and 5-LOX; dotted lines represent the lower limit of quantification

61–64]. Interestingly, no LTB_4 was detected in plasma while 5-HETE was one of the metabolites increased after surgery. Besides the high levels of 12-HETE and 5-HETE, increases in the analogous EPA metabolites 12-HEPE and 5-HEPE were observed (Fig. 8). The metabolites 12-HEPE and 5-HEPE are produced via the LOX pathway, but with EPA as precursor fatty acid. EPA derived LOX products can provide chemotactic activities, but are less potent than products of AA [62, 65].

For COX derived metabolites, such as the prostaglandins and thromboxanes, no significant changes were observed in human plasma (Electronic Supplementary Material Fig. 2). In previous studies on ischemia/reperfusion of the heart, metabolites of the COX pathway, especially PGE_2 , TXB_2 , and 6-keto- $\text{PGF}_{1\alpha}$, were significantly increased in heart perfusates [37]. A similar observation was made for CYP450 related compounds such as DiHETrEs. At the 24 h time point sampled here, only minor fluctuations were observed, suggesting acute COX-dependent responses had subsided by this time.

Our findings indicate that the analytical platform developed here allows the detection of consistent alterations in oxylipin profiles, even within a small patient population ($n=5$).

Conclusions

We developed an LC-MS/MS method to detect oxylipins. Our target library comprises an expanded set of more than 100 compounds biosynthesized from six different PUFAs in one LC-MS/MS analysis. These targets include a wide array of both pro- and anti-inflammatory lipid mediators. Our oxylipin profiling platform was developed and validated for human plasma on a triple quadrupole mass spectrometer using multiple reaction monitoring operated in a dynamic MRM mode to guarantee high sensitivity, i.e., down to nM levels. This technology allows the sensitive detection of co-eluting compounds and isomers as well as several isobaric compounds by detecting specific transitions for each analyte with optimal dwell times in defined time windows. Our method was demonstrated

on patients undergoing cardiac surgery and was able to detect one third of our target library in human plasma. The metabolites 12-HETE and 5-HETE, known to be related to cardiac surgery and healing processes, were consistently increased after cardiac surgery. In addition, an increase of similar monohydroxy metabolites derived from EPA was observed. In conclusion, the analytical platform developed here allows specific and sensitive quantitative assessment of more than 100 oxylipins and may have wider applications in studies on the role of these highly bioactive metabolites in human diseases. The successful application of the developed method to this biological study implies that the developed platform can be used broadly to profile these highly bioactive compounds.

Acknowledgments This project was (co)financed by the Netherlands Metabolomics Centre (NMC) which is part of the Netherlands Genomics Initiative/Netherlands Organization for Scientific Research.

Open Access This article is distributed under the terms of the Creative Commons Attribution License which permits any use, distribution, and reproduction in any medium, provided the original author(s) and the source are credited.

References

- Serhan CN, Savill J (2005) Resolution of inflammation: the beginning programs the end. *Nat Immunol* 6(12):1191–1197
- Tapiero H, Ba GN, Couvreur P, Tew KD (2002) Polyunsaturated fatty acids (PUFA) and eicosanoids in human health and pathologies. *Biomed Pharmacother* 56(5):215–222
- Fletcher JR (1993) Eicosanoids. Critical agents in the physiological process and cellular injury. *Arch Surg* 128(11):1192–1196
- Funk CD (2001) Prostaglandins and leukotrienes: advances in eicosanoid biology. *Science* 294(5548):1871–1875
- Bergstrom S, Samuelsson B (1965) Prostaglandins. *Annu Rev Biochem* 34:101–108
- Bray MA, Ford-Hutchinson AW, Smith MJ (1981) Leukotriene B₄: an inflammatory mediator in vivo. *Prostaglandins* 22(2):213–222
- Bittleman DB, Casale TB (1995) 5-Hydroxyeicosatetraenoic acid (HETE)-induced neutrophil transcellular migration is dependent upon enantiomeric structure. *Am J Respir Cell Mol Biol* 12(3):260–267
- Spector AA, Gordon JA, Moore SA (1988) Hydroxyeicosatetraenoic acids (HETEs). *Prog Lipid Res* 27(4):271–323

9. Stenson WF, Parker CW (1980) Monohydroxyeicosatetraenoic acids (HETEs) induce degranulation of human neutrophils. *J Immunol* 124(5):2100–2104
10. Larsen BT, Miura H, Hatoum OA, Campbell WB, Hammock BD, Zeldin DC, Falck JR, Gutterman DD (2006) Epoxyeicosatrienoic and dihydroxyeicosatrienoic acids dilate human coronary arterioles via BK(Ca) channels: implications for soluble epoxide hydrolase inhibition. *Am J Physiol Heart Circ Physiol* 290(2):H491–499
11. Roman RJ (2002) P-450 metabolites of arachidonic acid in the control of cardiovascular function. *Physiol Rev* 82(1):131–185
12. Morin C, Sirois M, Echave V, Rizcallah E, Rousseau E (2009) Relaxing effects of 17(18)-EpETE on arterial and airway smooth muscles in human lung. *Am J Physiol Lung Cell Mol Physiol* 296(1):L130–139
13. Newman JW, Morisseau C, Hammock BD (2005) Epoxide hydrolases: their roles and interactions with lipid metabolism. *Progress in Lipid Research* 44(1):1–51
14. Spector AA, Fang X, Snyder GD, Weintraub NL (2004) Epoxyeicosatrienoic acids (EETs): metabolism and biochemical function. *Progress in Lipid Research* 43(1):55–90
15. Dray F, Charbonnel B, Maclouf J (1975) Radioimmunoassay of prostaglandins F_{1α}, E₁ and E₂ in human plasma. *Eur J Clin Invest* 5(4):311–318
16. Jaffe BM, Behrman HR, Parker CW (1973) Radioimmunoassay measurement of prostaglandins E, A, and F in human plasma. *J Clin Invest* 52(2):398–405
17. Pradelles P, Grassi J, Maclouf J (1985) Enzyme immunoassays of eicosanoids using acetylcholine esterase as label: an alternative to radioimmunoassay. *Anal Chem* 57(7):1170–1173
18. Neupert W, Oelkers R, Brune K, Geisslinger G (1996) A new reliable chemiluminescence immunoassay (CLIA) for prostaglandin E₂ using enhanced luminol as substrate. *Prostaglandins* 52(5):385–401
19. Wu C, Irie S, Yamamoto S, Ohmiya Y (2009) A bioluminescent enzyme immunoassay for prostaglandin E₂ using Cypridina luciferase. *Luminescence* 24(2):131–133
20. Tsikas D (1998) Application of gas chromatography–mass spectrometry and gas chromatography–tandem mass spectrometry to assess in vivo synthesis of prostaglandins, thromboxane, leukotrienes, isoprostanes and related compounds in humans. *J Chromatogr B: Biomed Sci Appl* 717(1–2):201–245
21. Cao H, Xiao L, Park G, Wang X, Azim AC, Christman JW, van Breemen RB (2008) An improved LC-MS/MS method for the quantification of prostaglandins E(2) and D(2) production in biological fluids. *Anal Biochem* 372(1):41–51
22. Masoodi M, Nicolaou A (2006) Lipidomic analysis of twenty-seven prostanoids and isoprostanes by liquid chromatography/electrospray tandem mass spectrometry. *Rapid Commun Mass Spectrom* 20(20):3023–3029
23. Takabatake M, Hishinuma T, Suzuki N, Chiba S, Tsukamoto H, Nakamura H, Saga T, Tomioka Y, Kurose A, Sawai T, Mizugaki M (2002) Simultaneous quantification of prostaglandins in human synovial cell-cultured medium using liquid chromatography/tandem mass spectrometry. *Prostaglandins Leukot Essent Fatty Acids* 67(1):51–56
24. Zhang JH, Pearson T, Matharoo-Ball B, Ortori CA, Warren AY, Khan R, Barrett DA (2007) Quantitative profiling of epoxyeicosatrienoic, hydroxyeicosatetraenoic, and dihydroxyeicosatetraenoic acids in human intrauterine tissues using liquid chromatography/electrospray ionization tandem mass spectrometry. *Anal Biochem* 365(1):40–51
25. Dahl SR, Kleiveland CR, Kassem M, Lea T, Lundanes E, Greibrokk T (2009) Determination of thromboxanes, leukotrienes and lipoxins using high-temperature capillary liquid chromatography–tandem mass spectrometry and on-line sample preparation. *J Chromatogr A* 1216(22):4648–4654
26. Schmelzer KR, Kubala L, Newman JW, Kim IH, Eiserich JP, Hammock BD (2005) Soluble epoxide hydrolase is a therapeutic target for acute inflammation. *Proc Natl Acad Sci U S A* 102(28):9772–9777
27. Newman JW, Watanabe T, Hammock BD (2002) The simultaneous quantification of cytochrome P450 dependent linoleate and arachidonate metabolites in urine by HPLC-MS/MS. *J Lipid Res* 43(9):1563–1578
28. Nithipatikom K, Grall AJ, Holmes BB, Harder DR, Falck JR, Campbell WB (2001) Liquid chromatographic–electrospray ionization–mass spectrometric analysis of cytochrome P450 metabolites of arachidonic acid. *Anal Biochem* 298(2):327–336
29. Deems R, Buczynski MW, Bowers-Gentry R, Harkewicz R, Dennis EA (2007) Detection and quantitation of eicosanoids via high performance liquid chromatography–electrospray ionization–mass spectrometry. *Methods Enzymol* 432:59–82
30. Mesaros C, Lee SH, Blair IA (2009) Targeted quantitative analysis of eicosanoid lipids in biological samples using liquid chromatography–tandem mass spectrometry. *J Chromatogr B Analyt Technol Biomed Life Sci* 877(26):2736–2745
31. Yue H, Jansen SA, Strauss KI, Borenstein MR, Barbe MF, Rossi LJ, Murphy E (2007) A liquid chromatography/mass spectrometric method for simultaneous analysis of arachidonic acid and its endogenous eicosanoid metabolites prostaglandins, dihydroxyeicosatrienoic acids, hydroxyeicosatetraenoic acids, and epoxyeicosatrienoic acids in rat brain tissue. *J Pharm Biomed Anal* 43(3):1122–1134
32. Blahou VA, Buczynski MW, Brown CR, Dennis EA (2009) Lipidomic analysis of dynamic eicosanoid responses during the induction and resolution of Lyme arthritis. *J Biol Chem* 284(32):21599–21612
33. Masoodi M, Mir AA, Petasis NA, Serhan CN, Nicolaou A (2008) Simultaneous lipidomic analysis of three families of bioactive lipid mediators leukotrienes, resolvins, protectins and related hydroxy-fatty acids by liquid chromatography/electrospray ionisation tandem mass spectrometry. *Rapid Commun Mass Spectrom* 22(2):75–83
34. Newman JW, Kaysen GA, Hammock BD, Shearer GC (2007) Proteinuria increases oxylipid concentrations in VLDL and HDL but not LDL particles in the rat. *J Lipid Res* 48(8):1792–1800
35. Psychogios N, Hau DD, Peng J, Guo AC, Mandal R, Bouatra S, Sinelnikov I, Krishnamurthy R, Eisner R, Gautam B, Young N, Xia J, Knox C, Dong E, Huang P, Hollander Z, Pedersen TL, Smith SR, Bamforth F, Greiner R, McManus B, Newman JW, Goodfriend T, Wishart DS (2011) The human serum metabolome. *PLoS One* 6(2):e16957
36. Shearer GC, Harris WS, Pedersen TL, Newman JW (2010) Detection of omega-3 oxylipins in human plasma and response to treatment with omega-3 acid ethyl esters. *J Lipid Res* 51(8):2074–2081
37. Cordis GA, Das DK (1991) High-performance liquid chromatographic detection of myocardial prostaglandins and thromboxanes. *J Chromatogr* 536(1–2):309–317
38. Otani H, Prasad MR, Jones RM, Das DK (1989) Mechanism of membrane phospholipid degradation in ischemic-reperfused rat hearts. *Am J Physiol* 257(1 Pt 2):H252–258
39. Van der Vusse GJ, Reneman RS, van Bilsen M (1997) Accumulation of arachidonic acid in ischemic/reperfused cardiac tissue: possible causes and consequences. *Prostaglandins Leukot Essent Fatty Acids* 57(1):85–93
40. Goodfriend TL, Pedersen TL, Grekin RJ, Hammock BD, Ball DL, Vollmer A (2007) Heparin, lipoproteins, and oxygenated fatty acids in blood: a cautionary note. *Prostaglandins Leukot Essent Fatty Acids* 77(5–6):363–366
41. Nakamura H, Kim DK, Philbin DM, Peterson MB, Debros F, Koski G, Bonventre JV (1995) Heparin-enhanced plasma phospholipase A₂ activity and prostacyclin synthesis in patients undergoing cardiac surgery. *J Clin Invest* 95(3):1062–1070

42. Kurokawa K, Tanaka H, Tanaka S, Abe S (2001) Circadian characteristics of urinary leukotriene E(4) in healthy subjects and nocturnal asthmatic patients. *Chest* 120(6):1822–1828
43. Nadler JL, Yamamoto JV (1986) Diurnal variation and exercise induced changes of prostacyclin in man. *Prostaglandins Leukot Med* 22(1):71–78
44. Rigas B, Levine L (1983) Human salivary eicosanoids: circadian variation. *Biochem Biophys Res Commun* 115(1):201–205
45. Rajagopalan S., R. Gudihal, Waddell K (2010) Dynamic MRM: a clear advantage for high-throughput protein quantitation. Agilent Technologies, Inc 2010:5990-5092EN
46. MacMillan DK, Murphy RC (1995) Analysis of lipid hydroperoxides and long-chain conjugated keto acids by negative ion electrospray mass spectrometry. *Journal of the American Society for Mass Spectrometry* 6(12):1190–1201
47. Funk CD, Powell WS (1983) Metabolism of linoleic-acid by prostaglandin endoperoxide synthase from adult and fetal blood-vessels. *Biochimica Et Biophysica Acta* 754(1):57–71
48. Hamberg M, Samuelsson B (1980) Stereochemistry in the formation of 9-hydroxy-10,12-octadecadienoic acid and 13-hydroxy-9,11-octadecadienoic acid from linoleic acid by fatty acid cyclooxygenase. *Biochim Biophys Acta* 617(3):545–547
49. Tanito M, Yoshida Y, Kaidzu S, Ohira A, Niki E (2006) Detection of lipid peroxidation in light-exposed mouse retina assessed by oxidative stress markers, total hydroxyoctadecadienoic acid and 8-iso-prostaglandin F2alpha. *Neurosci Lett* 398(1–2):63–68
50. Quehenberger O, Armando AM, Brown AH, Milne SB, Myers DS, Merrill AH, Bandyopadhyay S, Jones KN, Kelly S, Shaner RL, Sullards CM, Wang E, Murphy RC, Barkley RM, Leiker TJ, Raetz CR, Guan Z, Laird GM, Six DA, Russell DW, McDonald JG, Subramaniam S, Fahy E, Dennis EA (2010) Lipidomics reveals a remarkable diversity of lipids in human plasma. *J Lipid Res* 51(11):3299–3305
51. Van Erk MJ, Wopereis S, Rubingh C, van Vliet T, Verheij E, Cnubben NH, Pedersen TL, Newman JW, Smilde AK, van der Greef J, Hendriks HF, van Ommen B (2010) Insight in modulation of inflammation in response to diclofenac intervention: a human intervention study. *BMC Med Genomics* 3:5
52. Helmersson J, Basu S (2006) Intra-day variation of in vivo prostaglandin F2alpha formation in healthy subjects. *Prostaglandins Other Lipid Mediat* 80(1–2):93–99
53. Entman ML, Michael L, Rossen RD, Dreyer WJ, Anderson DC, Taylor AA, Smith CW (1991) Inflammation in the course of early myocardial ischemia. *FASEB J* 5(11):2529–2537
54. Goetzl EJ, Brash AR, Tauber AI, Oates JA, Hubbard WC (1980) Modulation of human neutrophil function by monohydroxy-eicosatetraenoic acids. *Immunology* 39(4):491–501
55. Lagarde M, Gualde N, Rigaud M (1989) Metabolic interactions between eicosanoids in blood and vascular cells. *Biochem J* 257(2):313–320
56. Grace PA (1994) Ischaemia–reperfusion injury. *Br J Surg* 81(5):637–647
57. Jordan JE, Zhao ZQ, Vinten-Johansen J (1999) The role of neutrophils in myocardial ischemia-reperfusion injury. *Cardiovasc Res* 43(4):860–878
58. Morykwas MJ, Duell EA, Jennings DA, Ledbetter MS, White WL, Argenta LC (1992) Arachidonic acid metabolites: effects on inflammation of fetal rabbit excisional wounds. *Inflammation* 16(3):251–258
59. Van der Ham AC, Kort WJ, Bijma AM, Zijlstra FJ, Vermeer MA, Jeekel J (1990) Eicosanoid profile of healing colon anastomosis and peritoneal macrophages in the rat. *Gut* 31(7):807–811
60. Pillai P, Leeson S, Porter T, Owens C, Kim J, Conte M, Serhan C, Gelman S (2011) Chemical mediators of inflammation and resolution in post-operative abdominal aortic aneurysm patients. *Inflammation*. doi:2010.1007/s10753-10011-19294-10758
61. Buczynski MW, Dumlao DS, Dennis EA (2009) Thematic review series: proteomics. An integrated omics analysis of eicosanoid biology. *J Lipid Res* 50(6):1015–1038
62. Heideil JR, Taylor SM, Laegreid WW, Silflow RM, Liggitt HD, Leid RW (1989) In vivo chemotaxis of bovine neutrophils induced by 5-lipoxygenase metabolites of arachidonic and eicosapentaenoic acid. *Am J Pathol* 134(3):671–676
63. Peters-Golden M, Brock TG (2000) Intracellular compartmentalization of leukotriene biosynthesis. *Am J Respir Crit Care Med* 161(2 Pt 2):S36–40
64. Samuelsson B, Dahlen SE, Lindgren JA, Rouzer CA, Serhan CN (1987) Leukotrienes and lipoxins: structures, biosynthesis, and biological effects. *Science* 237(4819):1171–1176
65. Moreno JJ (2009) Differential effects of arachidonic and eicosapentaenoic Acid-derived eicosanoids on polymorphonuclear transmigration across endothelial cell cultures. *J Pharmacol Exp Ther* 331(3):1111–1117