



A review and assessment of cyanobacterial toxins as cardiovascular health hazards

Zorica Svirčev^{1,2} · Liang Chen^{3,4,5} · Kinga Sántha¹ · Damjana Drobac Backović¹ · Stamenko Šušak^{6,7} · Aleksandra Vulin^{6,7} · Tamara Palanački Malešević¹ · Geoffrey A. Codd^{8,9} · Jussi Meriluoto^{2,1}

Received: 26 February 2022 / Accepted: 2 August 2022 / Published online: 23 August 2022
© The Author(s), under exclusive licence to Springer-Verlag GmbH Germany, part of Springer Nature 2022

Abstract

Eutrophicated waters frequently support bloom-forming cyanobacteria, many of which produce potent cyanobacterial toxins (cyanotoxins). Cyanotoxins can cause adverse health effects in a wide range of organisms where the toxins may target the liver, other internal organs, mucous surfaces and the skin and nervous system. This review surveyed more than 100 studies concerning the cardiovascular toxicity of cyanotoxins and related topics. Over 60 studies have described various negative effects on the cardiovascular system by seven major types of cyanotoxins, i.e. the microcystin (MC), nodularin (NOD), cylindrospermopsin (CYN), anatoxin (ATX), guanitoxin (GNTX), saxitoxin (STX) and lyngbyatoxin (LTX) groups. Much of the research was done on rodents and fish using high, acutely toxin concentrations and unnatural exposure routes (such as intraperitoneal injection), and it is thus concluded that the emphasis in future studies should be on oral, chronic exposure of mammalian species at environmentally relevant concentrations. It is also suggested that future in vivo studies are conducted in parallel with studies on cells and tissues. In the light of the presented evidence, it is likely that cyanotoxins do not constitute a major risk to cardiovascular health under ordinary conditions met in everyday life. The risk of illnesses in other organs, in particular the liver, is higher under the same exposure conditions. However, adverse cardiovascular effects can be expected due to indirect effects arising from damage in other organs. In addition to risks related to extraordinary concentrations of the cyanotoxins and atypical exposure routes, chronic exposure together with co-existing diseases could make some of the cyanotoxins more dangerous to cardiovascular health.

Keywords Cyanobacteria · Cyanotoxins · Microcystins · Health · Cardiovascular system

✉ Zorica Svirčev
zorica.svircev@dbe.uns.ac.rs

¹ University of Novi Sad, Faculty of Sciences, Department of Biology and Ecology, UNS, Trg Dositeja Obradovića 2, 21000 Novi Sad, Serbia

² Biochemistry, Faculty of Science and Engineering, Åbo Akademi University, Tykistökatu 6A, 20520 Turku, Finland

³ Institute for Ecological Research and Pollution Control of Plateau Lakes, School of Ecology and Environmental Science, Yunnan University, Kunming 650500, China

⁴ Donghu Experimental Station of Lake Ecosystems, State Key Laboratory of Freshwater Ecology and Biotechnology, Institute of Hydrobiology (IHB), Chinese Academy of Sciences (CAS), Wuhan 430072, China

⁵ State Key Laboratory of Eco-Hydraulics in Northwest Arid Region, Faculty of Water Resources and Hydroelectric Engineering, Xi'an University of Technology, Xi'an 710048, China

⁶ University of Novi Sad, Faculty of Medicine, UNS, Hajduk Veljkova 3, 21000 Novi Sad, Serbia

⁷ Institute of Cardiovascular Diseases of Vojvodina, Sremska Kamenica, Serbia

⁸ School of Natural Sciences, University of Stirling, Stirling FK9 4LA, UK

⁹ School of Life Sciences, University of Dundee, Dundee DD1 5EH, UK

Introduction

Cyanobacteria (blue-green algae) are ubiquitous prokaryotes which developed the aerobic atmosphere of the Earth through oxygenic photosynthesis (Yadav et al. 2011; Cardona et al. 2018). They are commonly found throughout the world in eutrophicated freshwater lakes, rivers and reservoirs, and in brackish and marine environments. They also colonize surfaces of rocks and buildings and the top layers of soils. Cyanobacterial populations can form mass occurrences known as cyanobacterial blooms in waterbodies under favorable environmental conditions. Visible scums on water surfaces, and mats in shallow waters and along waterbody margins, may be formed by certain genera of cyanobacteria (Chorus and Bartram 1999; Whitton and Potts 2012; Huisman et al. 2018). Anthropogenic eutrophication is one of the major factors contributing to cyanobacterial dominance in many aquatic ecosystems (Bláha et al. 2009). Global climate change is expected to favor cyanobacterial populations, i.e. to increase their magnitude and promote their geographical spread, and to extend their growth periods (Codd et al. 2005; Bláhová et al. 2008; Huisman et al. 2018).

Some cyanobacterial secondary metabolites have been identified as potent toxins (cyanotoxins), which have significant adverse bioactivities at environmentally

encountered concentrations. Cyanotoxins can cause illness and mortality of humans and terrestrial animals, with further toxicities to aquatic vertebrates and invertebrates, and consequent negative impacts on ecosystems (Codd et al. 1999, 2005; Sivonen and Jones 1999; Metcalf and Codd 2012; Janssen 2019; Chorus and Welker 2021).

Acutely lethal cyanotoxins can be divided into groups depending on their main targets in (mammalian) organisms (Meriluoto et al. 2017). These include hepatotoxins (microcystins–MCs and nodularins–NODs), cytotoxins (cylindrospermopsin and analogues–CYNs), and neurotoxins (anatoxin-a and analogues–ATXs, anatoxin-a(S)–ATX-a(S), and saxitoxin and analogues–STXs). *Nota bene*, the new name guanitoxin–GNTX has been introduced for ATX-a(S) by Fiore et al. (2020). There are also irritants of various potency (lyngbyatoxin and analogues–LTXs and lipopolysaccharides–LPSs). In addition, cyanobacteria contain neurotoxic di-amino acids (e.g. β -N-methylamino-L-alanine–BMAA and 2,4-diaminobutyric acid–DAB). The long-term effects of BMAA and DAB are under investigation (Dunlop et al. 2021). The general characteristics of common cyanotoxins are summarised in Table 1.

The toxicity of MCs is mainly mediated via the inhibition of serine/threonine protein phosphatases PP1 and PP2A activities, with PP4 and PP5 also being susceptible to inhibition (Mackintosh et al. 1990; Hastie et al. 2005; Metcalf and Codd 2012) and modulation of PP2A expression (Chen

Table 1 General information on cyanotoxins

Cyanotoxins	Chemical structure	Number of known variants	LD ₅₀ to mice (intra-peritoneal, µg/kg)	Cellular/biochemical toxic mechanism	Most commonly reported toxicity
Microcystins (MCs)	Cyclic heptapeptides	279 (Bouaïcha et al. 2019)	50 – > 1200 (Harada et al. 1990)	Inhibition of eukaryotic protein phosphatases, oxidative stress, apoptosis	Hepatotoxicity, neurotoxicity, reproductive and developmental toxicity, cardiovascular toxicity
Nodularins (NODs)	Cyclic pentapeptides	10 (Du et al. 2019)	30 – > 150 (Chen et al. 2021a)	Inhibition of eukaryotic protein phosphatases	Hepatotoxicity
Cylindrospermopsins (CYNs)	Alkaloids	5 (Kokociński et al. 2017a)	200 – 2100 (Ohtani et al. 1992)	Inhibition of protein synthesis, DNA damage, cell death	Cytotoxicity, cardiovascular toxicity
Anatoxins (ATXs)	Alkaloids	14 (Bruno et al. 2017)	260 (Stevens and Krieger 1991)	Agonist of nicotinic acetylcholine receptors at neuromuscular junctions	Neurotoxicity
Guanitoxin (GNTX), previously anatoxin-a(S) (ATX-a(S))	Organophosphate	1 (Metcalf and Bruno 2017)	40 (Mahmood and Carmichael 1987)	Inhibition of acetylcholinesterase	Neurotoxicity
Saxitoxins (STXs)	Alkaloids	57 (Ballot et al. 2017)	8 – 10 (Wiberg and Stephenson 1960)	Blockage of voltage-gated sodium channels of neurons	Neurotoxicity
Lyngbyatoxins (LTXs)	Alkaloids	3 (van Apeldoorn et al. 2007)	250 – > 300 (Ito et al. 2002)	Binding to protein kinase C	Tumour-promoting

and Xie 2016). Protein phosphatases, together with protein kinases, have key roles in the regulation of cardiac function, including the central contractile apparatus in heart muscle cells (Lorenzen-Schmidt et al. 2016). Perturbations in the fine regulation of PP1 and PP2A activities may contribute to heart pathophysiology and disease (Nicolaou et al. 2009; Lubbers and Mohler 2016). These enzymological and cardiac tissue-based observations on cardiac regulation support consideration of the potential effects of MCs and NODs on cardiac function and disease.

An increased level of reactive oxygen species (ROS) generation after MC exposure causes oxidative stress which can result in apoptosis or cell damage and genotoxicity (Svirčev et al. 2010; Žegura et al. 2011b; Chen and Xie 2016). Exposure to MCs also leads to the disturbance of cytoskeleton elements (microfilaments, intermediate filaments and microtubules). Through regulation of transcription factors and proto-oncogenes, MCs also act as tumour promoters (Svirčev et al. 2010; Žegura et al. 2011b; Valério et al. 2016; Žegura 2016).

The cyclic pentapeptide, NOD, is very similar to MCs in its modes of action. There is, however, one fundamental difference between NOD (which does not bind covalently to active site cysteine residues of protein phosphatases) and the covalently binding MCs such as the common variant, microcystin-leucine-arginine, MC-LR (which binds covalently to protein phosphatases, Bagu et al. 1997). In analogy with NOD, a dehydrobutyrine-containing MC was found to inhibit PPs but it did not bind covalently to protein phosphatases (Hastie et al. 2005). The inhibition of PP1 and PP2A triggers a cascade of cellular events associated with oxidative stress and can thereby cause a disintegration of cellular structure, cell proliferation, hepatomegaly, liver damage and hepatic hemorrhage, accompanied by an increase in phosphorylated ERK1/2, p90RSK, p70/p85S6K and p38, as well as the induction of caspase activities and anti-apoptotic Bcl-xL (Batista et al. 2003; Dittmann and Wiegand 2006; Ufelmann and Schrenk 2015; Chen et al. 2021a).

The guanidine alkaloid toxin, CYN, can be cytotoxic, immunotoxic, neurotoxic, genotoxic and carcinogenic (Falconer and Humpage 2006). It may express endocrine- and developmental toxicity (Moreira et al. 2012). CYN acts mainly through the inhibition of protein synthesis, interaction with cytochrome P450 (CYP450) and the generation of oxidative stress and DNA strand breaks. It also binds to estrogen receptors and affects acetylcholinesterase (AChE) activity (Yang et al. 2020).

The alkaloid neurotoxin, ATX-a, can passively cross most biological membranes (gastrointestinal membranes, blood–brain barrier, placenta) and quickly reach its target: nicotinic acetylcholine receptors (nAChR) in the nervous system (Hyde and Carmichael 1991). ATX-a is an agonist of these receptors, and after binding, it causes constant

nAChR opening. This action compromises communication between neuronal and postsynaptic cells, leading to detrimental effects on brain, muscles, the respiratory tract and cardiovascular system (Christensen and Khan 2020; Colas et al. 2021).

GNTX (formerly, ATX-a(S); Fiore et al. 2020) is an organophosphate compound that inhibits acetylcholine esterase activity resulting in acetylcholine not being hydrolyzed at the synapse. The characteristic symptom in mammals is hypersalivation and death is due to respiratory arrest. GNTX is structurally unrelated to ATX-a.

The mode of action of the alkaloid, STX, is based on the blocking of Na⁺ channels in neuronal cells and of Ca²⁺ and K⁺ channels in cardiac cells (Ballot et al. 2017). In this manner, the propagation of electrical transmission is inhibited within the peripheral nerves and skeletal or cardiac muscles (Kao 1993; Wang et al. 2003; Su et al. 2004; Testai et al. 2016b; Christensen and Khan 2020).

LTXs are highly inflammatory and vesicatory, dermatotoxic alkaloids, with a cytotoxic action (Osborne et al. 2001). They are also tumour promoters which induce protein kinase C (PKC) activity (Fujiki et al. 1981; Basu et al. 1992; Jiang et al. 2014; Du et al. 2019).

A recent review (Svirčev et al. 2019) identified 1118 observations of cyanotoxins in 869 freshwater ecosystems in 66 countries throughout the world. Among the listed cyanotoxin occurrences were 183 verified or strongly suspected associated, and in some cases causative, cyanotoxin poisonings involving humans and/or animals. It is likely that cyanobacteria-related ecotoxicological and health problems are present in many more ecosystems than those mentioned in the literature in this context.

Cyanobacteria are easily observed with the naked eye in environments when they occur in higher numbers. Cyanobacterial mass occurrences, blooms, scums and mats, have a striking appearance and the cyanobacterial biomass often produces tastes and odours which may reach consumers in tap water. Poisonings of mammals, birds and fish exposed to toxic cyanobacteria have been reported from many aquatic ecosystems (Metcalf and Codd 2012; Svirčev et al. 2019). Human exposure to cyanobacteria and their toxins in either recreational or drinking waters can cause multiple symptoms including irritations and general symptoms (irritation of skin and mucous membrane of the eyes, nose and throat, weakness, fever), gastrointestinal illnesses (abdominal pain, nausea, vomiting, diarrhoea, gastroenteritis, liver damage), neurological disorders (muscle tremors, nausea, tingling in fingertips and toes, blurred vision, headache, dizziness, paralysis) and cardio-pulmonary problems (asthma-like symptoms, hypoxia, cyanosis, respiratory or cardiac arrest) which may have a fatal outcome (Moore 1984, 1996; Chorus and Bartram 1999; Metcalf and Codd 2012). The toxic effects can appear

within minutes (neurotoxins) to days (cytotoxins) after exposure. The severity of the poisonings is dependent on several factors: the particular cyanotoxins and their concentrations, the exposure media and routes involved, and body weight and age of the exposed animals or persons. Chronic exposure to cyanobacteria and their toxic metabolites, in particular to MCs, is acknowledged as a potential factor in carcinogenic processes. Epidemiological data and experimental knowledge associate cyanobacterial blooms, together with other risk factors, with a higher cancer incidence. Epidemiological studies indicate causative associations between exposure to (toxic) cyanobacteria and primary liver cancer, colorectal cancer, retroperitoneal and peritoneal cancer, kidney cancer, gastric cancer, brain cancer, heart, mediastinum and pleural cancer, ovarian cancer, testicular cancer, leukemia and malignant skin melanoma (Yu 1995; Ueno et al. 1996; Fleming et al. 2002; Zhou et al. 2002; Svirčev et al. 2013, 2014).

Although at least 279 structural variants of the cyclic heptapeptide MCs are now known (Meriluoto et al. 2017; Bouaïcha et al. 2019; Chen et al. 2021b), most of the toxicological investigations using purified MCs have been performed with MC-LR. This variant is among the most commonly found and abundant of the MCs in environmental surveys and is also one of the most toxic variants according to animal bioassays. Several organs or tissues have been reported as targets of MC toxicity (Kankaanpää et al. 2005; McLellan and Manderville 2017). These include liver (Falconer et al. 1983; Hou et al. 2015; Chen et al. 2016b, 2017; Yang et al. 2018), gastrointestinal tract (Ito et al. 2000; Cao et al. 2019a), kidneys (Piyathilaka et al. 2015), reproductive organs (Chen et al. 2013, 2016a; Zhang et al. 2019), the nervous system (Caban-Holt et al. 2005; Feurstein et al. 2010), the cardiovascular system (Zhao et al. 2008) and the endocrine system (Chen et al. 2018b, 2021c). MC-LR induces germ cell apoptosis and has a connection with a mitochondrial-reliant apoptotic pathway (Chen and Xie 2016; Li et al. 2016). MC genotoxicity has also been observed (Li et al. 2008; Žegura et al. 2011a; Žegura 2016).

While the primary target of MC-LR and other MCs in vertebrates is the liver, chronic or acute exposure to MCs also shows toxic effects on the heart (LeClaire et al. 1995; Milutinović et al. 2006; Wang et al. 2008; Qiu et al. 2009). Human cardiovascular health is thought to be affected by MCs as there is solid evidence of positive associations between MC exposure and cardiotoxicity in animal studies (Cao et al. 2019b; Alosman et al. 2020). There is, however, a scarcity of human data on the cardiovascular toxicity of MCs and other cyanotoxins. The potential impairment of cardiovascular health by cyanotoxins is thus a partially uncharacterized and underestimated risk in humans. Because of the wide distribution of toxic cyanobacteria in aquatic environments and the *in vivo* evidence from animal studies,

the possibility of cyanotoxin-induced cardiovascular health effects in humans fully merits investigation.

In this paper, evidence of the cardiovascular toxicity of MCs and other cyanotoxins is accounted for and evaluated. Attention has been paid to understanding whether the reported research has been representative and relevant regarding: i) type of bioassay, ii) route of exposure, iii) length of exposure and dose and iv) the animal models used in studies of cardiovascular toxicity of cyanotoxins. Detailed biochemical, physiological and medical background is presented in Tables 2, 3, 4, 5, 6 and numerical facts related to i–iv are described in Tables 7, 8, 9, 10.

Cardiovascular toxicity of cyanotoxins

Studies on cardiovascular toxicity of cyanotoxins in vertebrates

In this section, we summarize current knowledge of the cardiovascular toxicity of cyanotoxins (Tables 2, 3, 4, 5, 6). A wide range of environmental, medical and other scientific literature was explored via the Scopus database which includes PubMed, Web of Science and ScienceDirect. The search strategy was the following: (cardiotoxicity OR heart) AND (microcystin OR nodularin OR cylindrospermopsin OR anatoxin OR saxitoxin OR lyngbyatoxin). The searches resulted in an internal database from which Tables 2, 3, 4, 5, 6 were manually constructed.

Many of the most comprehensive *in vivo* studies concerning cyanobacterial/cyanotoxin toxicology were done during the 1990s and earlier (e.g. Falconer et al. 1994; Fawell et al. 1999). In 1995, for the first time, LeClaire et al. (1995) proved that MC-LR could be cardiotoxic. MCs are well described and systematized in their action regarding cardiovascular toxicity (Cao et al. 2019b; Alosman et al. 2020). Here, we summarize the cardiovascular actions of all of the widely recognised cyanotoxins, including MC, NOD, CYN, ATX, GNTX, STX and LTX.

Tables 2, 3, 4, 5, 6 show the reviewed results of the influence of cyanotoxins on heart function and changes in blood vessels of various vertebrates (mammals, fishes, amphibians and birds). The influence of these toxins is shown through acute and chronic action at the level of cell biochemistry and morphology and tissues of the heart and blood vessels. The activity of cyanotoxins has been followed through *in vivo* and *in vitro* exposures. Generally, cyanotoxins may have an effect on myocardial cells, specific cells of the cardiac conduction system and pericardial cells. Pathological remodeling of the extracellular matrix and adverse effects on vascular cells and blood itself can also occur.

The cardiotoxicity of cyanotoxins is observed at several cardiovascular levels: at the genetic, biochemical,

Table 2 Summary of studies on cardiovascular toxicity by whole cells and crude extracts of cyanobacteria and purified cyanotoxins in mammals in vivo

Cyanobacterial cells, extracts and purified cyanotoxins	Mammals	Route	Doses	Duration	Acute/chronic	Cardiovascular effects	References
<i>Microcystis aeruginosa</i> NRC1	Mice	i.p	40, 80, 160 mg cyanobacteria/kg	3.8 h	Acute	Swelling, loss of cross-striation and pigmentation of myocardial fibres	Konst et al. (1965)
<i>M. aeruginosa</i> NRC1	Mice	Oral	3.2, 6.4, 12.8 g cyanobacteria/kg	4 h	Acute	Swelling, loss of cross-striation and pigmentation of myocardial fibres	Konst et al. (1965)
<i>M. aeruginosa</i> NRC1	Guinea pig	i.p	80, 160, 320 mg cyanobacteria/kg	4 h	Acute	Partly coagulated residual blood in the heart and large vessels	Konst et al. (1965)
<i>M. aeruginosa</i> NRC1	Guinea pig	Oral	1.6, 3.2, 6.4, 12.8 g cyanobacteria/kg	12 h	Acute	Partly coagulated residual blood in the heart and large vessels	Konst et al. (1965)
<i>M. aeruginosa</i> NRC1	Rabbit	Oral	1.6, 3.2, 6.4, 12.8 g cyanobacteria /kg	30 h	Acute	Tachycardia, rapid heart action, partly coagulated residual blood in the heart and large vessels, swelling, loss of cross-striation and pigmentation of myocardial fibres	Konst et al. (1965)
<i>M. aeruginosa</i> NRC1	Lamb	Oral	16 g cyanobacteria /kg	19 h	Acute	Accelerated heart action, petechial haemorrhages in coronary fat, swelling, loss of cross-striation and pigmentation of myocardial fibres	Konst et al. (1965)
<i>M. aeruginosa</i> NRC1	Calf	Oral	9.6, 32 g cyanobacteria /kg	28 h	Acute	Accelerated heart action, systolic murmurs	Konst et al. (1965)
<i>M. aeruginosa</i> M228 extract	Jcl:ICR mice (♂)	i.p	10–20 mg dry cells/kg	1 h	Acute	No significant changes of heart weight, contracted abdominal vascular system, decreased R-wave voltage, ST-segment depression, tachycardia development and terminal bradycardia, atrial fibrillation	Oishi and Watanabe (1986)

Table 2 (continued)

Cyanobacterial cells, extracts and purified cyanotoxins	Mammals	Route	Doses	Duration	Acute/chronic	Cardiovascular effects	References
Cyanobacterial crude extracts	Wistar rats (♂)	i.v	80 µg MC-LReq/kg (1 LD ₅₀)	1, 2, 4, 6, 12, 24 h	Acute	Heart: MC-LR and -RR accumulation	Wang et al. (2008)
Crude extracted MCs, mainly -RR and -LR	Rabbits (♂)	i.p	12.5, 50 µg/kg	1, 3, 12, 24, 48 h	Acute	Heart mitochondria: ultra-structural damage, MDA↑, SOD and SDH activities↑, Ca ²⁺ -Mg ²⁺ -ATPase↓, no significant changes of NADH dehydrogenase or Na ⁺ -K ⁺ -ATPase	Zhao et al. (2008)
Crude extracted MCs	Wistar rats (♂)	i.v	14, 87 µg MC-LReq/kg (0.16, 1 LD ₅₀)	24 h	Acute	Heart rate↓, mean arterial pressure↓, plasma: ALT↑, ALP↑, AST↑, LDH↑, CK↑, cTn I↑; heart: MCs accumulation, micro- and ultra-structural damage, cytosol CAT, GST, SOD and GPX activities↑, cytosol GSH and MDA↑, mitochondrial complex I and III, no significant changes of complex II, mitochondrial MDA↑, CAT, GST, SOD and GPX mRNA↑	Qiu et al. (2009)
Crude extracted MCs	Wistar rats (♂)	i.v	14 µg MC-LReq/kg (0.16 LD ₅₀)	2, 4, 6 h	Acute	Heart: apoptosis↑, p53, Bax, Bcl-2, caspase-3 and caspase-9 mRNA↑	Qiu (2014)

Table 2 (continued)

Cyanobacterial cells, extracts and purified cyanotoxins	Mammals	Route	Doses	Duration	Acute/chronic	Cardiovascular effects	References
MC-LR	Fischer 344 rats (♂)	i.v	50, 100 µg/kg	30, 60, 120, 240, 480 min	Acute	Arterial blood pressure↓, heart rate↓, cardiac output↓, stroke volume↓, body temperature↓, O ₂ consumption↓, CO ₂ production↓, metabolic rate↓, respiratory exchange ratio↑, no significant changes of relative tidal volume, arterial acid–base balance changes, arterial lactate↑	LeClaire et al. (1995)
MC-LR	Cross-bred, pigs (♀)	i.v	25, 72 µg/kg	45, 90, 150, 210, 300 min	Acute	Mean aortic pressure↓, central venous pressure↓, portal venous pressure↑, hepatic and renal perfusion↓, pO ₂ ↑, O ₂ saturation↑, pCO ₂ ↓	Beasley et al. (2000)
MC-LR	Aged ICR mice (♂)	Oral	500 µg/kg/time	1, 6, 7, 12, 13 weeks	Sub-chronic	Heart: MC staining in blood plasma	Ito et al. (2000)
MC-LR	Young ICR mice (♂)	Oral	500 µg/kg/4 weeks	16 weeks	Sub-chronic	Heart: no MC staining	Ito et al. (2000)
MC-LR	Wistar rats (♂)	i.p	10 µg/kg/2 days	8 months	Chronic	Heart: micro-structural damage, loss of cell cross-striations, mononuclear infiltration in the interstitial tissue, cardiomyocytes↑, myofibril volume fraction↓, fibrosis↑, no significant changes of apoptosis	Milutinović et al. (2006)

Table 2 (continued)

Cyanobacterial cells, extracts and purified cyanotoxins	Mammals	Route	Doses	Duration	Acute/chronic	Cardiovascular effects	References
MC-YR	Wistar rats (♂)	i.p	10 µg/kg/2 days	8 months	Chronic	Heart: micro-structural damage, fibrous proliferation, lymphocyte infiltration, bizarre-shaped nuclei, volume density↓, cardiomyocytes↑, myofibril volume fraction↓, no significant changes of apoptosis	Šuput et al. (2010)
MC-LR	N:NIH-S mice (♂)	i.p	25 µg/kg/2 days	1 month	Sub-chronic	Heart: no obvious DNA fragmentation, no significant changes of BAX, Bcl-2, α-tubulin, CaMKII or MAPK proteins	Lezcano et al. (2012)
MC-LR	KM (Kunming) mice (♂)	i.p	3.125, 6.25, 12.5, 25 µg/kg/day	7 days	Sub-chronic	Heart: no MCs accumulation	Huang et al. (2013)
MC-LR	C57 BL/6 mice (♂)	i.p	20 µg/kg/day	28 days	Sub-chronic	Liver and lung: micro-vascular permeability, CXCR2 and p-VE-cadherin proteins↑; liver, lung and heart: vascular leakage; serum: TNF-α, IL-1β, IL-6 and IL-8↑	Chen et al. (2018c)
MC-LR	BALB/c mice (♂)	Drinking water	1, 7.5, 15, 30 µg/L	6 months	Chronic	F1 (PD180, ♀♂): no micro-structural changes of heart	Meng et al. (2020)
<i>Cylindrospermopsis raciborskii</i> PHAWT/M	MF1 mice (♂)	Gavage	2.5–8.3 CYN mg/kg	48, 72 h	Acute	Heart: micro-structural damage, subepicardial and myocardial hemorrhages, loss of fiber striation, homogeneous pink staining, pyknotic nuclei	Seawright et al. (1999)
Extract of <i>C. raciborskii</i> AWQC CYP-026 J	Swiss albino mice (♂)	i.p	250, 500, 1000 mg cells/kg	48 h	Acute	Acute heart failure	Bernard et al. (2003)
CYN	ICR mice (♂)	i.p	0.2 mg/kg	16, 24, 32, 40, 48, 72, 80, 100 h	Acute	Single cell necroses	Terao et al. (1994)

Table 2 (continued)

Cyanobacterial cells, extracts and purified cyanotoxins	Mammals	Route	Doses	Duration	Acute/chronic	Cardiovascular effects	References
Extract of <i>Anabaena flos-aquae</i> UTEX 2383 (±)ATX-a	Wistar rats (♂)	i.v	1.5, 3, 4.5, 6, 7.5 mg extract/kg	30 min	Acute	Heart rate↓, mean arterial blood pressure↑	Dube et al. (1996)
	Sprague Dawley rats (♂)	i.v	10, 30, 100, 300 µg/kg	30 min	Acute	Mean arterial pressure↑, heart rate↓, cardiac index↑, no significant changes of total peripheral resistance index, hindquarter blood flow↑, no significant changes of hindquarter vascular resistance, renal and mesenteric blood flow↓, renal and mesenteric vascular resistance↑, plasma epinephrine↑, no significant changes of plasma norepinephrine	Sirén and Feurstein (1990)
(±)ATX-a	Sprague Dawley rats (♂)	i.c.v	10, 30, 100, µg/kg	30 min	Acute	Mean arterial pressure↑, heart rate↓, no significant changes of hindquarter blood flow or hindquarter vascular resistance, renal and mesenteric blood flow↓, renal and mesenteric vascular resistance↑	Sirén and Feurstein (1990)
(+)ATX-a	Sprague Dawley rats (♂)	i.v	1, 3, 10, 30, 100, 300 µg/kg	30 min	Acute	Mean arterial pressure↑, heart rate↓, pO ₂ ↓, pCO ₂ ↑, acidosis	Adeyemo and Sirén (1992)
(±)ATX-a	Sprague Dawley rats (♂)	i.v	1, 3, 10, 30, 100, 300 µg/kg	30 min	Acute	Mean arterial pressure↑, heart rate↓, pO ₂ ↓, pCO ₂ ↑, no significant changes in arterial blood acid–base balance	Adeyemo and Sirén (1992)
GNTX	Sprague Dawley rats (♂)	i.v	3.5 µg/kg/min	10 min	Acute	Blood pressure↓, ↑, no significant changes of heart rate	Cook et al. (1990)

Table 2 (continued)

Cyanobacterial cells, extracts and purified cyanotoxins	Mammals	Route	Doses	Duration	Acute/chronic	Cardiovascular effects	References
STX	Hanky albino guinea pigs	i.p	10 µg/kg	10, 15 min	Acute	Blood pressure↓, incrementally dysfunctional myocardial performance, myocardial failure	Chang et al. (1993)
STX	Hanky albino guinea pigs	i.p	10 µg/kg	11 min	Acute	Blood pressure↓, blood pH↓	Benton et al. (1994)

↑ increased, ↓ decreased, *i.c.v.* intracerebroventricular, *i.p.* intraperitoneal, *i.v.* intravenous, *ALP* alkaline phosphatase, *ALT* alanine amino-transferase, *AST* aspartate amino-transferase, *ATX-a* anatoxin-a, *CAT* catalase, *CYN* cylindrospermopsin, *GNTX* guanitoxin, *GSH* glutathione, *GPX* glutathione peroxidase, *GST* glutathione S-transferase, *LDH* lactate dehydrogenase, *MC* microcystin, *MDA* malondialdehyde, *SOD* superoxide dismutase, *STX* saxitoxin. The weight of the cyanobacterial material refers to dry weight

subcellular, cellular, tissue, organ and vascular system level (Fig. 1).

Based on the reviewed papers and using the organizational levels presented in Fig. 1, a wide range of cardiovascular system injuries and medical conditions caused by cyanotoxins under acute exposure is apparent.

Summary of the cardiovascular effects by cyanotoxins

There is a similarity in the action of MCs and NOD, which is consistent with their structural relatedness and common aspects of their modes of action as protein phosphatase inhibitors. They belong to the same group of cyanotoxins, hepatotoxins. The number of studies involving MCs greatly exceeds that of the other cyanotoxins (see Tables 7, 8, 9). Hence, the overall effects of MCs on the heart and cardiovascular system are better understood than those of the other cyanotoxins.

The toxicity of CYN is principally based on its inhibition of protein synthesis. CYN often causes haemorrhage. In the case of CYN, no effect on heart rate or blood pressure was observed, while the hepatotoxins caused bradycardia and a decrease in blood pressure upon acute, high-level exposure. The effect of ATXs on heart rate and blood pressure was dose-dependent, not time-dependent in contrast to the hepatotoxins. While the molecular modes of action of ATX-a and GNTX are different, their toxico-pathological outcomes are similar. STXs acted similarly to the hepatotoxins by reducing heart rate and blood pressure. LTX induced aorta contractions in rabbits.

Supporting studies

This review also includes selected haematotoxicity studies which support the understanding of cardiovascular events related to exposure to cyanotoxins. A study where rats were dosed orally for 28 days with 700–25,000 µg MCs per kg of feed material demonstrated changes in immunological and haematological parameters (Palikova et al. 2013). The total MCs consumed was 700–15,300 µg MCs/rat/28 days. Some authors emphasize the importance of erythrocytes in the functioning of the cardiovascular system and their important role in the active regulation of vascular tone, especially during hypoxic and ischemic conditions (Pernow et al. 2019; Mahdi et al. 2021). Altered erythrocyte function has important implications for several conditions of cardiovascular disease, especially participating in cardiovascular dysfunction in pathological conditions. MCs can cause: i) an increase in erythrocyte sedimentation rate (Zhang et al. 2007); ii) deformation and damage of erythrocytes (Liu et al. 2002; Zhou et al. 2012) and iii) cell membrane damage and damage to the

Table 3 Summary of studies on the cardiovascular toxicity of purified cyanotoxins in mammals in vitro

Cyanotoxins	Cells or other models	Doses	Duration	Cardiovascular effects	References
MC-LR	Primary HUVECs	10, 20, 40 μ M	24 h	Cell proliferation \downarrow , apoptosis \uparrow , migration \downarrow , capillary-like structure formation \downarrow , intracellular and mitochondrial ROS \uparrow , p-NF- κ B \uparrow , VCAM-1 \uparrow , ICAM-1 \uparrow , TNF- α \uparrow	Shi et al. (2015)
MC-LR	Primary HUVECs	40 μ M	24, 48 h	Cell viability \downarrow , apoptosis \uparrow , migration index \downarrow , tube formation \downarrow , ROS \uparrow , SOD \downarrow , GSH \downarrow , MDA \uparrow , nitrite \uparrow , p-NF- κ B \uparrow , VCAM-1 \uparrow , ICAM-1 \uparrow , IL-6 \uparrow , TNF- α \uparrow	Shi et al. (2017)
MC-LR	Primary HUVECs	2 μ M	6 h	Endothelial monolayer permeability \uparrow , morphological changes of VE-cadherin containing junctions, endocytosis of VE-cadherin \uparrow , MCP-1, IL-6, IL-8, IL-1 β , TNF- α and ICAM-1 mRNA \uparrow , p-VE-cadherin protein \uparrow , secreted IL-8 protein \uparrow	Chen et al. (2018c)
MC-LR	HUVECs	40 μ M	24 h	Apoptosis \uparrow , caspase-3 and -9 \uparrow , MMP \downarrow , mitochondrial Cyt c \downarrow , cytoplasmic Cyt c \uparrow , mitochondrial and cytoplasmic ROS \uparrow , NRF2 protein and activity \downarrow , HO-1 \downarrow	Shi et al. (2018)
MC-LR	HUVECs	50, 100, 500, 1000 nmol/L	24 h	Cell proliferation \downarrow , G0/G1 \uparrow , S $\%$ \downarrow , OTM \uparrow , SOD, CAT and GPX activities \downarrow , MDA \uparrow	Wang et al. (2018)
MC-LR	Rat H9C2 cardiomyocytes	10 μ M	4, 8, 12, 16, 20, 24 h	Rhythmic genes bmal1, per1, per2 and rev-erba mRNA \downarrow , cry1 and cry2 mRNA \uparrow \downarrow , antioxidant genes ho-1 and catalase mRNA \uparrow \downarrow , SOD1 and SOD2 mRNA \uparrow	Xu et al. (2018)
MC-LR	HUVECs	0.01, 0.05, 0.1, 0.5, 1 μ M	24 h	Apoptosis \uparrow , MMP \downarrow , mitochondrial ROS \uparrow , caspase-3 and -9 activities \uparrow , cleaved caspase-3 and p53 proteins \uparrow , PCNA protein \uparrow \downarrow	Wang et al. (2019)
MC-LR	Rat thoracic aortic rings	100, 1000 nM	2 weeks	Microvessels \downarrow , cell migration \downarrow , cell transfer distance \downarrow	Wang et al. (2021b)
MC-LR	HUVECs	1, 10, 100, 1000 nM	12, 24 h	Enclosed lumen \downarrow , common node of enclosed lumen \downarrow , circumference of enclosed lumen \downarrow , total lumen area \downarrow , distance of cell migration \downarrow , morphological damage of microfilaments, hollow nucleus, fluorescence intensity of actin-myosin cytoskeleton \downarrow , condensed chromatin	Wang et al. (2021b)
CYN	HUVECs	0.3, 0.375, 0.6, 0.75, 1.25, 1.5, 2.5, 5, 10, 20, 40 μ g/mL	24, 48 h	Total protein content \downarrow , neutral red uptake \downarrow , MTS reducton \downarrow , ROS \uparrow , GCS \uparrow , GSH \uparrow , microstructural and ultra-structural damage, nucleolar segregation, altered nuclei, degenerated Golgi apparatus, presence of granules and apoptosis \uparrow	Gutiérrez-Praena et al. (2012b)

Table 3 (continued)

Cyanotoxins	Cells or other models	Doses	Duration	Cardiovascular effects	References
CYN	HUVECs	2, 20, 200, 2000 nM (0.9, 9, 90, 900 µg/L)	12, 24, 48 h	Cell viability↓, distance of migration↓, apoptosis↑, altered microfilaments morphology, cell area↓, cell perimeter, intracellular ROS↑, ITGB1, Rho, ROCK, VIM-1, Bcl-2 mRNA↓, MLC-1 and Bax mRNA↑, Bax/Bcl-2↑	Wang et al. (2020a)
STX	Neonatal rat ventricular cardiomyocytes (NRVCs)	10, 50, 100, 200, 500, 1000 ng/mL	10 min	Field potential amplitude (FPA)↓, firing rate (FR)↓, field potential duration (FPD)↑, peak amplitude↓, rise time↑	Li et al. (2018)
LTX A	Rabbit thoracic aortic rings	1 µM	2 h	Slowly developing contraction	Robinson et al. (1991)

↑ increased, ↓ decreased, CAT catalase, CYN cylindrospermopsin, GCS γ-glutamyl-cysteine synthetase, GSH glutathione, GPX glutathione peroxidase, HUVECs human umbilical vein endothelial cells, LTX lyngbyatoxin, MC microcystin, MDA malondialdehyde, MMP mitochondrial membrane potential, MTS tetrazolium salt, OTM olive tail moment, ROS reactive oxidative species, SOD superoxide dismutase, STX saxitoxin

antioxidant system in human erythrocytes (Sicinska et al. 2006; Shi et al. 2017). In addition to erythrocytes, the importance and role of platelets in the cardiovascular system is recognised (Mahdi et al. 2021). MCs may be risk factors for disease because they cause reduction in circulating platelets (Beasley et al. 2000). Several papers have presented the effect of cyanotoxins on different types of leukocytes: an immunotoxic effect of MCs on peripheral blood lymphocytes (Lankoff et al. 2004); loss of neutrophil membrane integrity and increases in intracellular Ca²⁺ level in neutrophils and reactive oxygen species formation by rat and human neutrophils exposed to MCs (Kujbida et al. 2008, 2009). NOD can cause lymphocyte apoptosis (Zhang et al. 2012, 2013).

Indirect effects on the cardiovascular system can be achieved through changes in the function of liver, gastrointestinal tract, brain and kidney. MCs are primarily hepatotoxins and thus cause pathological changes in the structure and function of the liver (Falconer et al. 1981; Huang et al. 2013; Alosman et al. 2020). These toxins trigger hepatic interstitial hemorrhage (LeClaire et al. 1995). When the overall hemorrhage in the liver (Qiu et al. 2009) is sufficiently serious, it causes a hypovolemic shock in the affected animal. However, MCs also cause injury in other organs (Wang et al. 2008; Papadimitriou et al. 2012) and even malformation of body parts (Qi et al. 2016; Li et al. 2021). Pathological changes due to MCs in the structure and/or function of the gastrointestinal tract and kidney have been reported (Alosman et al. 2020) as well as induction of cerebral hemorrhage (Wang et al. 2019). At the molecular/cellular level, severe oxidative damage has been observed (Li et al. 2021). The consumption of oxygen and production of carbon dioxide have been reported to decrease in affected animals (LeClaire et al. 1995), coupled to a progressive hypothermia (LeClaire et al. 1995). CYN can increase lipid peroxidation in the kidney and liver, and protein oxidation in the liver (Gutiérrez-Praena et al. 2011). A reduction in glutathione (GSH) concentrations in the liver can also be observed. ATX has been reported to reduce renal and mean blood flow (Siren and Feuerstein 1990). STX binds to the Na⁺ and Ca²⁺ channels of the nerve axon membranes, thus blocking the propagation of nerve impulses in cardiac muscles (Wang et al. 2003; Su et al. 2004). LTX-exposed mice died from bleeding in the small intestine where severely damaged capillaries of the intestinal villi could be observed (Ito et al. 2002).

Several papers report that neither MC nor CYN caused changes in heart function at the examined concentrations and routes of exposure (Theiss et al. 1988; Råbergh et al. 1991; Carbis et al. 1996; Tencalla and Dietrich 1997; Humpage and Falconer 2003; Lei et al. 2008a, b; Huang et al. 2013; Wu et al. 2016; Li et al. 2021). Moreover, the tissue distribution of both cyanotoxin types showed clear organotropism to the liver (and in some cases in other organs such as kidney

Table 4 Summary of studies on cardiovascular toxicity of cyanobacterial cells and extracts containing cyanotoxins and purified cyanotoxins in fish, in vivo

Cyanobacterial cells, extracts, purified toxins	Fish	Route	Doses	Duration	Acute/chronic	Cardiovascular effects	References
<i>Microcystis aeruginosa</i> PCC 7806	Yearling carp	Oral	400 µg MC-LR/kg	1, 3, 12, 24, 48, 72 h	Acute	Heart: no obvious micro-structural damage, no MC staining	Fischer and Dietrich (2000)
Disrupted <i>Microcystis</i>	Tenca (♂)	Oral	About 100, 220, 500, 1100 µg MC-LR/kg	96 h	Acute	Heart: micro- and ultra-structural damage, loss of myofibrils	Atencio et al. (2008a)
Disrupted <i>Microcystis</i>	Nile tilapia (♂)	Oral	About 2400 µg MC-LR/kg	24 h	Acute	Heart: micro- and ultra-structural damage, myofibrilolysis, oedema, microhemorrhages	Atencio et al. (2009)
Disrupted <i>M. aeruginosa</i>	Nile tilapia (♂)	Oral	About 2400 µg MC-LR/kg	24, 48, 72 h	Acute	Heart: micro- and ultra-structural damage, myofibrilolysis, hemorrhages, edema, lipid accumulation	Prieto et al. (2009)
Disrupted <i>Microcystis</i>	Nile tilapia (♂)	Oral	About 2400 µg MC-LR/kg	24 h	Acute	Heart: micro- and ultra-structural damage	Puerto et al. (2010)
<i>Microcystis</i> blooms cultured <i>M. aeruginosa</i> LE-3	Japanese medaka	Immersion	120–7000 µg MC/L	1–6 dpf	Acute	Heart rate ↓	Saraf et al. (2018)
MC-LR	Japanese medaka	Immersion	690–7838 µg MC/L	1–6 dpf	Acute	Heart rate ↓	Saraf et al. (2018)
<i>M. aeruginosa</i> FACHB-905	Zebrafish embryos	Immersion	600–6300 µg/L	1–6 dpf	Acute	Heart rate ↓	Saraf et al. (2018)
Crude extracts of <i>M. aeruginosa</i> HUB 5.3	Zebrafish embryos	Immersion	5, 10, 20 × 10 ⁵ cells/L (6.7, 11.2, 24.6 µg MC/L)	1–96 hpf	Acute	Heart rate ↓, pericardial edemas	Li et al. (2021)
Crude extracts of field <i>M. aeruginosa</i>	Zebrafish embryos	Immersion	0.1% dry weight of suspended matter, 40 µg MC/L	Blastula stage up to end of embryonic period	Acute	Blood circulation ↓, erythrocytes accumulated in heart and edema	Oberemm et al. (1997)
Crude extracts of field <i>M. aeruginosa</i> HUB 5–2–4	Zebrafish embryos	Immersion	0.1% dry weight of suspended matter, 30 µg MC/L	Blastula stage up to end of embryonic period	Acute	Blood circulation ↓, erythrocytes accumulated in heart and edema	Oberemm et al. (1997)
Crude extracts of field <i>M. aeruginosa</i>	Zebrafish embryos	Immersion	0.02%, 0.1 w/v suspended dry matter, 40 µg MC/L	–	Acute	Blood circulation ↓, erythrocytes accumulated in heart, hematoma, edema	Oberemm et al. (1999)
Crude extracts of field <i>M. aeruginosa</i>	Zebrafish embryos	Immersion	0.02%, 0.1 w/v suspended dry matter, 30 µg MC/L	–	Acute	Blood circulation ↓, erythrocytes accumulated in heart, hematoma, edema	Oberemm et al. (1999)
MC-LR	Zebrafish embryos	Immersion	10 mg/L	2 h (eleuthero-embryos)	Acute	Heart rate ↓, pectoral edema	Oberemm et al. (1999)

Table 4 (continued)

Cyanobacterial cells, extracts, purified toxins	Fish	Route	Doses	Duration	Acute/chronic	Cardiovascular effects	References
Extracts of <i>Microcystis</i> PCC 7813	Newly hatched brown trout alevins (2–7 dpf)	Immersion	5, 50, 500 µg MC-LReq/L	1, 2, 3 min, 24, 72 h	Acute	Heart rate↑, stroke volume↑, cardiac output↑	Best et al. (2001)
MC-LR	Newly hatched brown trout alevins (2–7 dpf)	Immersion	5, 50, 500 µg/L	1, 2, 3 min, 24, 72 h	Acute	No significant changes of heart rate, stroke volume↑, cardiac output↑	Best et al. (2001)
Extracts of <i>M. aeruginosa</i> KMF	Nile tilapia (♂)	i.p	725 µg MC-LR/kg	24 h, 7 days	Acute	Heart: LPO↑, SOD↓	Pichardo et al. (2008)
Extracts of <i>Microcystis</i> spp. bloom	Crucian carp	i.p	50, 200 MC-LReq/kg	1, 3, 12, 24, 48 h	Acute	Mean arterial blood pressure↓, heart rate↑, circulating blood volume↓	Li et al. (2009)
Crude extracts of <i>M. aeruginosa</i> bloom	Zebrafish	Immersion	30 mg biomass/L	36 h	Acute	Heart: micro-structural damage, edema, dissociation, congestion of blood vessels, cytoplasmic vacuolation, degenerative nuclei of myocardiocytes, DNA laddering, % double-stranded DNA↓	Shahi et al. (2012)
Exudates of <i>M. aeruginosa</i> FACHB-905	<i>Sinyclocheilus graham</i> embryos	Immersion	0.4–4 × 10 ⁶ cells/mL	1 hpf–10 dpf	Acute	Swollen pericardium heart dysplasia, protein S100A1↑, myosin light chain↓	Zi et al. (2018)
Extracts of <i>M. aeruginosa</i> RST9501	Trahira	i.p	100 µg MC-LR/kg	24 h	Acute	No significant changes of oxygen uptake, O ₂ extraction↓, heart rate↑	Martins et al. (2019)
MC-LR	Loach embryos	Immersion	0–500 µg/L	Post-fertilization, 32-cells, gastrula	Acute	Pericardial edema, tubular heart, bradycardia	Liu et al. (2002)
MC-LR	Nile tilapia (♂)	i.p	500 µg/kg	7 days	Acute	Heart: micro-structural damage, myopathy, fibrolysis	Atencio et al. (2008b)
MC-RR	Nile tilapia (♂)	i.p	500 µg/kg	7 days	Acute	Heart: micro-structural damage, myopathy, fibrolysis	Atencio et al. (2008b)
MC-LR	Zebrafish embryos	Immersion	0.2, 0.5, 2, 5 mg/L	0.5–96 hpf	Acute	Heart rate↓, heart malformations	Li et al. (2011)
MC-LR	Nile tilapia	i.p	100 µg/kg	48 h	Acute	Metabolic rate↓, critical O ₂ tension↑, heart rate↓	Martins et al. (2011)
MC-LR	Zebrafish embryos	Immersion	0.2, 0.5, 2, 5 mg/L	0.5–96 hpf	Acute	Apoptosis in heart area	Zeng et al. (2014)

Table 4 (continued)

	Fish	Route	Doses	Duration	Acute/chronic	Cardiovascular effects	References
MC-RR	Zebrafish embryos	Immersion	0.3, 1, 3 mg/L	0.5–96 hpf	Acute	Heart rate↓	Xie et al. (2015)
MC-LR	Zebrafish embryos	Immersion	0.5, 1, 2, 4, 6 μM	0.5–96 hpf	Acute	Heart rate↓, apoptosis in heart area	Qi et al. (2016)
MC-LR	Zebrafish (♀♂)	Immersion	1, 5, 25 μg/L	60 days	Sub-chronic	FI (5 dpf): pericardial edema	Wu et al. (2017)
MC-LR	Zebrafish embryos	Immersion	1, 10, 100, 300 μg/L	4–72 hpf	Acute	Heart rate↓	Chen et al. (2018b)
MC-LR	Transgenic zebrafish (TG flk-1: GFP) embryos	Immersion	50, 100, 500, 1000 nmol/L	24–72 hpf	Acute	Caudal vein regions↓, deficiencies of dorsal longitudinal anastomotic vessels, intersegmental arteries and veins	Wang et al. (2018)
MC-LR	Transgenic zebrafish Tg (Flk1:GFP) embryos	Immersion	0.1, 1 μM	24–72 hpf	Acute	Vessel: angiodysplasia, damaged vascular structures, suppressed and malformed blood vessels↑, lumen size↓, blood flow area↓, brain hemorrhage	Wang et al. (2019)
MC-LR	Transgenic zebrafish Tg (flk-1: EGFP) embryos	Immersion	100, 1000 nM	2–24 hpf	Acute	Dorsal aorta: rougher appearance and curved shape, curved PCV and growth inhibition, suppressed MceV, ISV sprouting↓	Wang et al. (2021b)
MC-LR	Transgenic zebrafish Tg (fli1a: NGFP) embryos	Immersion	100, 1000 nM	2–72 hpf	Acute	EC migration from CHT↓	Wang et al. (2021b)
MC-LR	Zebrafish (♀♂)	Immersion	1, 5, 25 μg/L	45 days	Sub-chronic	FI (5 dpf): heart rate↓	Cheng et al. (2017)
MC-LR	Zebrafish (♀♂)	Immersion	0.9, 4.5, 22.5 μg/L	21 days	Sub-chronic	FI (5 dpf): heart rate↓	Zuo et al. (2021)
MC-LR	Zebrafish (♂)	Immersion	5, 20 μg/L	6 weeks	Sub-chronic	FI (96 hpf): heart rate↓	Zhao et al. (2021)
NOD	Transgenic zebrafish Tg (flk-1: EGFP) embryos	Immersion	0.5, 1, 2, 4 μM	3–24, 48, 72, 96 hpf	Acute	Heart rate↑↓, pericardial edema, area of pericardium area↑, SV-BA distance↑, SV-BA distance/body length↑, DA width↓, DA-DLAV distance↓, ISV↓, SIV area↓, CCV area↑	Chen et al. (2020b)
NOD	Transgenic zebrafish Tg (fli1a: NGFP) embryos	Immersion	0.5, 1, 2, 4 μM	3–72 hpf	Acute	EC migration from CHT↓	Chen et al. (2020b)

Table 4 (continued)

Cyanobacterial cells, extracts, purified toxins	Fish	Route	Doses	Duration	Acute/chronic	Cardiovascular effects	References
NOD	Zebrafish embryos	Immersion	0.5, 1, 2, 4 µM	3–24, 120 hpf	Acute	Apoptosis in heart↑, vascular development-related genes DLL4 and VEGFC mRNA↑, CDH5 and VEGFA mRNA↓	Chen et al. (2020b)
lyophilized <i>Aphanizomenon ovalisporum</i> LEGE-X001	Nile tilapia (♂)	Oral	200 µg CYN/kg	24 h	Acute	Heart: micro- and ultra-structural damage, myofibrilolysis, edema, hemorrhage	Gutiérrez-Praena et al. (2014)
CYN	Nile tilapia (♂)	Oral	200 µg/kg	24 h	Acute	Heart: micro- and ultra-structural damage, myofibrilolysis, edema, hemorrhage	Gutiérrez-Praena et al. (2014)
<i>Aphanizomenon ovalisporum</i> LEGE-X001	Nile tilapia (♂)	Immersion	10 µg CYN/L and 0.46 µg deoxy-CYN/L, 100 µg CYN/L and 4.6 µg deoxy-CYN/L	7, 14 days	Sub-chronic	Heart: micro- and ultra-structural damage, myofibrilolysis, edema	Guzmán-Guillén et al. (2015)
lyophilized <i>Aphanizomenon ovalisporum</i> LEGE-X001	Nile tilapia (♂)	Oral	400 µg CYN/kg	24 h	Acute	Heart: micro- and ultra-structural damage, myofibrilolysis, loss of myofibrils, edema and hemorrhage, no significant changes of cardiac fibers diameter or capillaries diameter	Guzmán-Guillén et al. (2017)
CYN	Nile tilapia (♂)	Oral	400 µg/kg	24 h	Acute	Heart: micro- and ultra-structural damage, myofibrilolysis, loss of myofibrils, edema and hemorrhage, no significant changes of cardiac fibers diameter or capillaries diameter	Guzmán-Guillén et al. (2017)
<i>Oscillatoria</i> sp. FACHB-528	Zebrafish embryos	Immersion	5, 10, 20 × 10 ⁵ cells/L (8.5, 17.1, 35.1 µg CYN/L)	1–96 hpf	Acute	No significant changes of heart rate	Li et al. (2021)
CYN	Nile tilapia (♂)	Gavage	200 µg/kg	24 h, 5d	Acute	Heart: micro- and ultra-structural damage, myofibrilolysis, edema	Gutiérrez-Praena et al. (2012a)

Table 4 (continued)

	Fish	Route	Doses	Duration	Acute/chronic	Cardiovascular effects	References
CYN	Nile tilapia (♂)	i.p	200 µg/kg	24 h, 5d	Acute	Heart: micro- and ultra-structural damage, myofibrolysis, edema	Gutiérrez-Praena et al. (2012a)
CYN	Nile tilapia (♂)	gavage	200, 400 µg/kg	24 h	Acute	Heart: micro- and ultra-structural damage, fibrolysis	Puerto et al. (2014)
CYN	Nile tilapia (♂)	oral	400 µg/kg	24 h	Acute	Heart: myofibrolysis, edema, cardiac fibers diameter↓, capillaries diameter↑	Guzmán-Guillén et al. (2016)
CYN	Transgenic zebrafish Tg (flk-1: EGFP) embryos	Immersion	2, 20, 200, 2000 nM 9, 90, 900 µg/L	0.9, 48, 72 hpf	Acute	Damaged blood vessels in head, trunk and caudal tail region, deformed PCeV, CtA and PHS, incomplete and irregular development of ISV and DLAV, CCV area↑, ventral diameter↑, abnormal blood vessels↑, CCV remodeling delay rate↑	Wang et al. (2020a)
CYN	Zebrafish embryos	Immersion	2, 20, 200, 2000 nM	2–48, 72, 96 hpf	Acute	Area of pericardial edema↑, SV-BA distance↑, heart beat↓	Wang et al. (2020b)
CYN	Transgenic zebrafish Tg (flk-1: EGFP) embryos	Immersion	2, 20, 200, 2000 nM	24–72 hpf	Acute	Blood vessels in brain↓, missing PCeV and PHS, deformity of DLV, CtA, PCeV and PHS	Wang et al. (2020b)
ATX-a	Zebrafish embryos	Immersion	400 µg/L	Pec-fin stage (55 hpf), protruding-mouth stage (80 hpf)	Acute	Heart rate↓↑	Oberemm et al. (1999)
STX	Transgenic zebrafish Tg (flk-1: EGFP) embryos	Immersion	0.05, 0.1 µM	3–24, 48, 72, 96 hpf	Acute	Cardiac rate↓, pericardial edema, DA width↑, DA-DLAV distance↓, ISV↓, ISV length↓, SIV area↓, CCV area↑	Chen et al. (2020a)

Table 4 (continued)

Cyanobacterial cells, extracts, purified toxins	Fish	Route	Doses	Duration	Acute/chronic	Cardiovascular effects	References
STX	Zebrafish embryos	Immersion	0.05, 0.1 µM	3–24 hpf	Acute	DLL4 and VEGFC mRNA↑, no significant changes of CDH5 mRNA, VEGFA mRNA↓	Chen et al. (2020a)

↑ increased, ↓ decreased, *dpp* day(s) post-fertilization, *hpf* hour(s) post-fertilization, *i.p.* intraperitoneal, *ATX-a* anatoxin-a, *CCV* common cardinal vein, *CHT* caudal hematopoietic tissue, *CtA* central artery, *CYN* cylindrospermopsin, *DA* dorsal aorta, *DLAV* dorsal longitudinal anastomotic vessel, *DLV* dorsal longitudinal vein, *EC* endothelial cell, *ISV* inter-segmental vessel, *LPO* lipid peroxidation, *MceV* mid-cerebral veins, *NOD* nodularin, *PCV* posterior cardinal vein, *PceV* posterior cerebral vein, *PHS* primary head sinus, *SIV* sub-intestinal vessels, *SOD* superoxide dismutase, *STX* saxitoxin, *SV-BA* sinus venosus–bulbus arteriosus

and gonads) but not to the heart (Norris et al. 2001; Lei et al. 2008a, b).

Discussion

Involvement of different cyanobacteria and cyanotoxins in cardiovascular toxicity studies

According to a recent global survey of published findings (Svirčev et al. 2019) the most commonly found toxic cyanobacterial genera worldwide were *Microcystis* spp. (669 reports), *Anabaena* spp. (397), *Aphanizomenon* spp. (100), *Planktothrix* spp. (98) and *Oscillatoria* spp. (75 reports).

Among the 112 studies in Tables 2, 3, 4, 5, 6 that examined effects on the cardiovascular system (Table 7), most were based on the use of purified cyanotoxins (67 studies, 60%): MCs (39 studies), NOD (3 studies), CYN (13 studies), ATX-a (5 studies), GNTX (1 study), STX (5 studies) and LTX (1 study). Natural blooms as crude sources of cyanotoxins were used in 7 (6%) of the 112 examined studies, principally containing *Microcystis* spp. (including *M. aeruginosa*), consistent with species of this genus being often encountered in natural and controlled freshwaters. When culture collections were considered as a source of toxic materials (20 studies, 18%), again *M. aeruginosa* was the most frequently listed (14 studies). Although also often present, *Aphanizomenon ovalisporum* as a source of cyanotoxins was represented in only three studies. *Cylindrospermopsis raciborskii* was the third most often recorded (2 studies), perhaps acknowledging the high interest in this species as a highly invasive organism which is increasing its distribution range from tropical and subtropical to temperate regions, and presenting a spreading environmental health risk to aquatic ecosystems and humans due to the cyanotoxins which it releases (Kokociński et al. 2017b). Finally, *Oscillatoria* spp., despite occurring in several environmental cyanotoxin surveys (Svirčev et al. 2019), and as a source of culture material was represented in only one study.

Over the last 2 decades there has been a considerable growth of interest in the analysis and ecotoxicology of cyanotoxins. A global geographical and historical assessment (of 468 articles, including 1118 cyanotoxin identifications, 869 freshwater ecosystems and 66 countries) of cyanotoxin distribution and cyanobacterial poisonings revealed that, of the cyanotoxins included, MCs were the most often recorded worldwide (63%; 669 of 1118), followed by CYN (10%; 107), ATXs (9%; 100) and STXs (8%; 93), while NODs were the least-often detected cyanotoxins (2%; 19). However, it should be noted that there were also blooms or poisoning reports where cyanotoxins were not analysed or specified (9%) (Svirčev et al. 2019). Similarly, Du et al. (2019) determined that the most widely distributed

Table 5 Summary of studies on cardiovascular toxicity of cyanobacterial cells and extracts containing cyanotoxins in amphibians in vivo and in vitro

Cyanobacterial cells, extracts purified toxins	Amphibian models	Route	Doses	Duration	Acute/chronic	Cardiovascular effects	References
<i>Cylindrospermopsis raciborskii</i>	Cane toad tadpoles	Immersion	200 µg cylindrospermopsin (CYN)/L	48, 96, 168 h	Acute	Heart: thickened walls, blood cells clumping, presence of smaller, pink casts, possibly cellular or proteinaceous	Kinnear et al. (2007)
Extracts of <i>C. raciborskii</i>	Cane toad tadpoles	Immersion	107 µg CYN/L	48, 96, 168 h	Acute	Heart: thickened walls, blood cells clumping, presence of smaller, pink casts, possibly cellular or proteinaceous	Kinnear et al. (2007)
CYN	Excised <i>Pelophylax ridibundus</i> heart	Immersion	1 µM	60 min	Acute	No significant changes of heart contractions	Chichova et al. (2021)

Table 6 Summary of studies on the cardiovascular toxicity of cyanobacterial cells containing cyanotoxins in birds in vivo

Cyanotoxins	Birds	Route	Doses	Duration	Acute/chronic	Cardiovascular effects	References
<i>Microcystis aeruginosa</i> NRC1	Chicken	i.p	80 mg cyanobacteria /kg	12 h	Acute	Petechial haemorrhages in myocardium, swelling, loss of cross-striation and pigmentation of myocardial fibres	Konst et al. (1965)
<i>M. aeruginosa</i> NRC1	Chicken	Oral	2.2, 8, 16 g cyanobacteria /kg	24.5 h	Acute	Petechial haemorrhages in myocardium, swelling, loss of cross-striation and pigmentation of myocardial fibres	Konst et al. (1965)
<i>M. aeruginosa</i> NRC1	Duck	i.p	80, 320 mg cyanobacteria /kg	12 h	Acute	Petechial haemorrhages in myocardium	Konst et al. (1965)
<i>M. aeruginosa</i> NRC1	Duck	Oral	2.2, 16 g cyanobacteria /kg	12 h	Acute	Petechial haemorrhages in myocardium	Konst et al. (1965)
<i>M. aeruginosa</i>	Japanese quail	Oral	0.2, 2.24, 22.46, 224.6 µg MC/kg/day	10, 30 days	Sub-chronic	Heart: EROD↑, GST↑, GSH↑, GR↑, LPO↑	Pašková et al. (2008)
<i>M. aeruginosa</i> 90%, <i>M. ichthyoblabe</i> 10%	Japanese quail (♂)	Oral	about 210 µg MC/kg/day	30 days	Sub-chronic	Heart: GSH↑, GR↑	Pašková et al. (2011)

↑ increased, *i.p.* intraperitoneal, *EROD* 7-ethoxyresorufin O-deethylase, *GSH* glutathione, *GR* glutathione reductase, *GST* glutathione S-transferase, *LPO* lipid peroxidation, *MC* microcystin

Table 7 Sources of surveyed cyanotoxins and their numerical representation in studies on cardiovascular effects

Sources	Toxin/species/strains	Number of papers	Total
Cyanobacterial blooms	<i>Microcystis</i> spp. (including <i>M. aeruginosa</i>)	7	7
Cyanobacterial cultures	<i>Microcystis aeruginosa</i> NRC1	11	20
	<i>Microcystis aeruginosa</i> PCC 7806	1	
	<i>Microcystis aeruginosa</i> LE-3	1	
	<i>Microcystis aeruginosa</i> FACHB-905	1	
	<i>Cylindrospermopsis raciborskii</i> PHAWT/M	1	
	<i>Cylindrospermopsis raciborskii</i> (strain not specified)	1	
	<i>Aphanizomenon ovalisporum</i> LEGE-X001	3	
	<i>Oscillatoria</i> sp. FACHB-528	1	
Extracts of cyanobacterial blooms	<i>Microcystis</i> spp. (including <i>M. aeruginosa</i>)	8	8
Extracts of cyanobacterial cultures	<i>Microcystis aeruginosa</i> 228	1	9
	<i>Microcystis aeruginosa</i> HUB 5.3	1	
	<i>Microcystis aeruginosa</i> HUB 5-2-4	1	
	<i>Microcystis aeruginosa</i> PCC 7813	1	
	<i>Microcystis aeruginosa</i> KMF	1	
	<i>Microcystis aeruginosa</i> RST9501	1	
	<i>Cylindrospermopsis raciborskii</i> AWQC CYP-026 J	1	
	<i>Cylindrospermopsis raciborskii</i> (strain not specified)	1	
	<i>Anabaena flos-aquae</i> UTEX 2383	1	
Exudates of cyanobacterial cultures	<i>Microcystis aeruginosa</i> FACHB-905	1	1
Pure cyanotoxin	Microcystins	39	67
	Nodularin	3	
	Cylindrospermopsin	13	
	Anatoxins	5	
	Guanitoxin	1	
	Saxitoxin	5	
	Lyngbyatoxin	1	
Total		112	112

cyanotoxins analyzed were also MCs (57 of 60 countries), then CYN (31), STXs (29), ATX (26), BMAA (16) and NOD (13 of 60). A comparable order of identified cyanotoxin prevalence is also observed in the overall literature, with MCs encompassing more than half (56%; 2971 of 5293) of the available literature, succeeded by STXs (27%; 1439), ATXs (9%; 467), NODs (9%; 452), CYN (7%; 364), BMAA (2%; 112), LTX (2%; 101) and aplysiatoxin (APT) (1%; 70) (Merel et al. 2013).

Some of the aforementioned results on cyanotoxin occurrence may, unavoidably, reflect the development, economic capacity and environmental analysis capabilities of individual regions and countries, i.e. including available methods, analytical standards, economic factors and technical expertise. Consequently, the true occurrence of cyanotoxins is unknown. Nonetheless, based on this review (Tables 7 and 8), it can be seen that the distribution of 67 published studies examining the effects of cyanotoxins on the cardiovascular system approximately corresponds to the published data on cyanotoxin occurrence, since most of the papers examined

the effects of MCs (39 studies, 58%) followed by CYN (13 studies, 19%), ATX-a (5 studies, 7%), STX (5 studies, 7%), NOD (3 studies, 5%) and finally GNTX (1 study, 1%) and LTX (1 study, 1%). Although they have been less frequently sought or detected, additional cyanotoxins can be present and can be harmful, but they are far less studied than MCs, especially the MC-LR variant, so it is necessary to pay more attention to the wider range of the environmentally occurring cyanotoxins in future research.

Many authors have used purified cyanotoxins in their research (67 studies; 60% of the 112 surveyed studies), an essential contribution to understanding cyanotoxin toxicology. However, the use of purified toxins also presents a limitation in toxicity studies, since they do not represent a natural exposure scenario presented by cyanobacteria and their toxic metabolites. In natural conditions, cyanobacterial blooms can simultaneously produce several different cyanotoxins and other bioactive secondary metabolites. Such natural populations can also include further environmental health hazards, e.g. microbial pathogens, synthetic

Table 8 Number of studies in the review reporting cardiovascular effects in different groups of organisms depending on the cyanotoxin tested

Toxins	Groups of organisms	Number of studies	Total number of studies
MCs	Mammals in vivo	10	39
	Mammals in vitro	9	
	Fish in vivo	20	
	Amphibians in vivo	–	
	Amphibians in vitro	–	
	Birds in vivo	–	
NOD	Mammals in vivo	–	3
	Mammals in vitro	–	
	Fish in vivo	3	
	Amphibians in vivo	–	
	Amphibians in vitro	–	
	Birds in vivo	–	
CYN	Mammals in vivo	1	13
	Mammals in vitro	2	
	Fish in vivo	9	
	Amphibians in vivo	–	
	Amphibians in vitro	1	
	Birds in vivo	–	
ATX	Mammals in vivo	4	5
	Mammals in vitro	–	
	Fish in vivo	1	
	Amphibians in vivo	–	
	Amphibians in vitro	–	
	Birds in vivo	–	
GNTX	Mammals in vivo	1	1
	Mammals in vitro	–	
	Fish in vivo	–	
	Amphibians in vivo	–	
	Amphibians in vitro	–	
	Birds in vivo	–	
STX	Mammals in vivo	2	5
	Mammals in vitro	1	
	Fish in vivo	2	
	Amphibians in vivo	–	
	Amphibians in vitro	–	
	Birds in vivo	–	
LTX	Mammals in vivo	–	1
	Mammals in vitro	1	
	Fish in vivo	–	
	Amphibians in vivo	–	
	Amphibians in vitro	–	
	Birds in vivo	–	
Total		67	67

Table 9 Summary of exposure routes, duration of exposure and concentrations of pure cyanotoxins applied in papers examining effects on the cardiovascular system

Cyanotoxin	Exposure route	Number of studies		
		Acute	Chronic	Total
MCs	Intraperitoneal	3	5*	8
	Oral	–	3**	3
	Intravenous	2	–	2
	Immersion	13	4***	17
	Cellular, in vitro	9	–	9
NOD	Immersion	3	–	3
CYN	Intraperitoneal	2	–	2
	Oral	5	–	5
	Immersion	3	–	3
ATX	Cellular, in vitro	3	–	3
	Intravenous	3	–	3
	Intracerebroventricular	1	–	1
GNTX	Immersion	1	–	1
	Intravenous	1	–	1
STX	Intraperitoneal	2	–	2
	Immersion	2	–	2
	Cellular, in vitro	1	–	1
LTX	Cellular, in vitro	1	–	1
Total		55	12	67

*7 days–8 months, **7 days–6 months, ***21–60 days

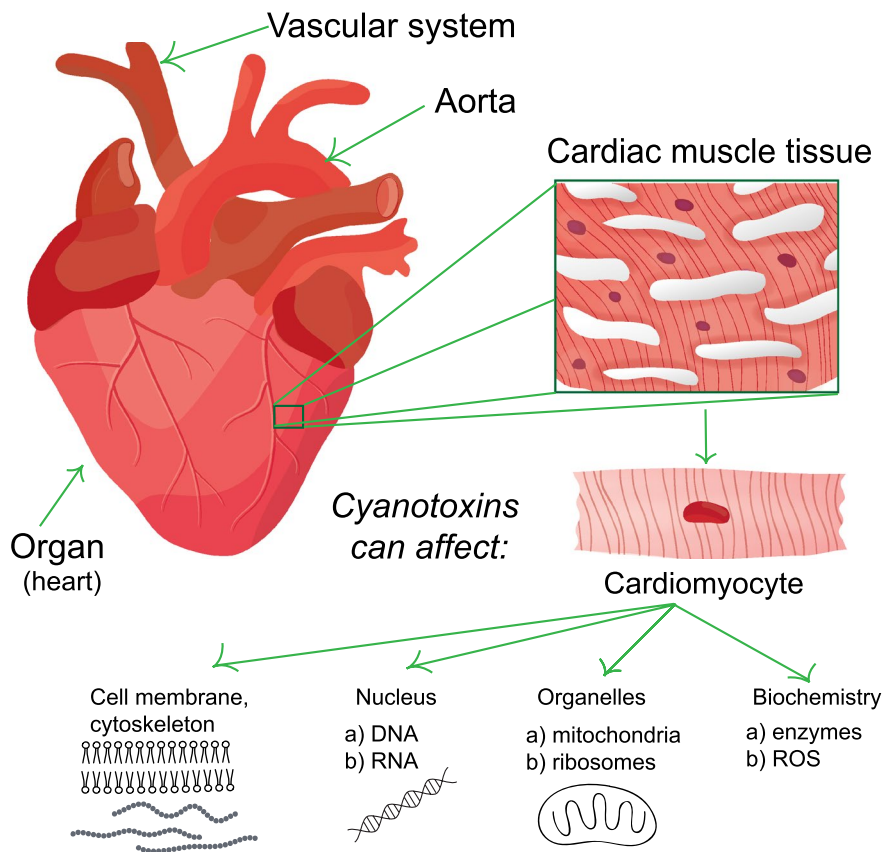
and natural chemicals, metals and microplastics. These in combination with cyanotoxins can exert additive, synergistic and antagonistic toxicities (Metcalf and Codd 2020; Chen et al., 2021b). Indeed, it is probably due to these interactions that crude cyanobacterial extracts containing known concentrations of specific cyanotoxin such as MC-LR can be more (or less) toxic than the same concentrations of the pure cyanotoxin (Testai et al. 2016a; Metcalf and Codd 2020). Also, accurate risk assessment of cyanotoxins is difficult when only partially characterized samples containing cyanobacteria or their products are used in this type of research (Testai et al. 2016a).

Pathways of exposure used in studies of cardiovascular toxicity of cyanotoxins

In natural and man-made environments, humans can be exposed to cyanobacteria and their toxins present in water, food, air and dust, via several different pathways: by ingestion, intravenously, direct dermal contact and/or inhalation (Codd et al. 1999; Drobac et al. 2013; Buratti et al. 2017; Massey et al. 2018). One of the most frequently involved exposure routes is the oral, with cyanotoxins being ingested via drinking water, incidental drinking during recreation and showering and via food (aquatic animals, edible plants,

Table 10 List of test organisms and corresponding numbers of studies examining effects of cyanobacteria and cyanotoxins on cardiovascular systems

Group	Tested organisms and in vitro models (number of studies)	Number of organisms	Number of studies
Mammals	Wistar rats (6), Sprague–Dawley rats (5), Fischer 344 rats (1), Swiss Albino mice (1), ICR mice (4), BALB mice (1), KM mice (1), MF1 mice (1), C57BL/6 mice (1), NIH-S mice (1), mice (strain not specified) (2), rabbits (2), guinea pigs (4), cross-bred pigs (1), lamb (1), calf (1), HUVECs (9), rat H9C2 cardiomyocytes (1), rat thoracic rings (1), NRVCs (1), rabbit thoracic rings (1)	21	46
Birds	chicken (2), duck (2), Japanese quail (2),	3	6
Fish	<i>Danio rerio</i> (30), <i>Oreochromis niloticus</i> (Tilapia) (16), <i>Cyprinus carpio</i> (1), <i>Carassius carassius</i> (1), <i>Hoplias malabaricus</i> (1), <i>Misgurnus mizolepis</i> (1), <i>Oryzias latipes</i> (3), <i>Salmo trutta</i> (2), <i>Sinocyclocheilus grahami</i> (1), <i>Tinca tinca</i> (1)	10	57
Amphibia	<i>Bufo marinus</i> (2), frogs heart in vitro (1)	2	3
Total		36	112

Fig. 1 Organizational levels of cardiovascular toxicity of cyanotoxins

cyanobacteria-based food supplements). For this reason, further studies examining effects and consequences of cyanobacterial toxicity should pay increasing attention to the oral exposure route of the test organisms to cyanotoxins. However, based on the collected data (Table 9) only around 12% (8 from 67 studies, including 3 on MCs and 5 on CYNs) of the studies have used oral exposure in assaying the toxicity of cyanotoxins to the cardiovascular system.

The most frequently used exposure route in in vivo research has been via immersion (26 studies, 39%), and although this is a useful strategy to monitor the effects of toxins (immersion scenarios for the exposure of fish and of amphibians obviously exist in natural conditions), the effects observed may vary from those via oral exposure only. Oral (8 studies, 12%) exposure is less represented in the literature. Only a few papers have compared the results of using

different exposure routes (Carbis et al. 1996; Navratil et al. 1998; Ito et al. 2002; Gaudin et al. 2008; Gutiérrez-Praena et al. 2012a). For example, Carbis et al. (1996) found different degrees of histological change in carp (*Cyprinus carpio* L.) tissues after exposure to MCs by i.p. administration, gavage and immersion. Heart lesions were not observed in the fish in any of the treatment groups. However, an i.p. injection of 50 µg/kg of MC was lethal to all fish within 8 h, while gavaging with 250 µg/kg caused minimal damage in the carp tissues. Navratil et al. (1998) applied purified MC-LR, and MC-LR in cyanobacterial biomass, i.p. and orally to juvenile carp to examine effects on red blood cells and activities of plasma enzymes. As anticipated, the results depended on the route of administration, character of the material and the cyanotoxin concentrations given. Fish (tilapia, *Oreochromis niloticus*) were also exposed to an acute high dose of CYN (200 µg/kg) by i.p. injection, and the effects were compared to those involving oral dosing (gavage). The histological alterations of tissues (including heart) were more pronounced after i.p. administration, except for the gastrointestinal tract, where lesions were more severe in fish exposed orally (Gutiérrez-Praena et al. 2012a). Ito et al. (2002) investigated the pathological effects of lyngbyatoxin A in mice. Much higher lethal doses were observed for the cyanotoxin applied orally (no deaths at 1000 µg/kg) in comparison to i.p. administration (250 µg/kg for young mice). The higher toxicity found via i.p. exposure in contrast to oral dosing implies a difference in the bioavailability of the cyanotoxins such as MC, as i.p. or i.v. administration leads to a more rapid uptake into the liver (over 70%), while oral administration results in less than 1% uptake into this organ (Gaudin et al. 2008). Parental exposure of zebrafish (*Danio rerio*) to MCs via immersion also resulted in decreased heart rate of F1 larvae (Cheng et al. 2017; Zuo et al. 2021).

Intraperitoneal (12 studies, 18%), intravenous (6 studies, 9%) and intracerebroventricular (1 study, 1%) exposures are less represented in the literature. Human hemodialysis patients in a treatment clinic (at Caruaru, NE Brazil) were accidentally exposed intravenously to cyanotoxins in an ineffectively treated dialysate water originating from locally sourced surface waters contaminated with cyanobacteria (Azevedo et al. 2002). Also, dermal and intranasal exposure have been observed during training and recreational activities in blooming waters (e.g. Turner et al. 1990; Vidal et al. 2017).

In recent years more research has been performed on the cells and tissues of the cardiovascular system (14 studies, 21%; Table 9). Animal and human cells are helpful tools in elucidating complex interactions and signaling pathways involved in MC toxicity at cellular and molecular levels (Campos and Vasconcelos 2010; Chen and Xie 2016). Nonetheless, cells used in bioassays *in vitro* cannot directly characterize the toxicity of compounds towards multicellular

organisms, and thus cyanotoxins still need to be tested *in vivo* (Orbach et al. 2018; Khoshnamvand et al. 2020).

Duration of exposure and toxicologically relevant concentrations of cyanotoxins, with special consideration of human toxicology

The division between acute and chronic exposure is not clear in all of the papers examined. Most of the so-called chronic exposure experiments (7–14 days) could be rather classified as subchronic. To obtain data on the relative toxicity arising from a single dose or a brief exposure (e.g. to determine LD₅₀), acute toxicity tests are the first ones to be used (Bhardwaj and Gupta 2012). Repeated dosing is typically done to establish the resulting effects from repeated administration of a toxin at lower concentrations than those applied in acute toxicity studies. In these chronic tests, organisms may be dosed for weeks or months, or even for 1 to 2 years, making the exposure a considerable part of a subject's life. Chronic toxicity tests are similar to the subchronic tests except that they may span over a longer time period and include larger groups of organisms (Bhardwaj and Gupta 2012). In research conducted on the effects of cyanotoxins on the cardiovascular system, these types of studies are very disproportionately represented, with single exposure tests accounting for most of the research. Only 12 studies have included chronic exposure (18%; with study lengths from 1 week to 8 months). Accordingly, it is clear that the accumulated bulk of research does not extend to the actual human situation which would typically involve repeated oral exposure, contrary to a single i.p. injection (Testai et al. 2016a).

Another important issue is the relevance of applied concentrations: the principle propounded since the fifteenth Century by Paracelsus is that “the dose makes the poison” (e.g. Grandjean 2016; Chen et al. 2018a). Too high or too low concentrations may be misleading, making health risks presented by cyanotoxins to be overestimated or underestimated. The WHO-proposed provisional guideline value for MC-LR in drinking water (Chorus and Welker 2021) includes an estimate of the tolerable daily intake (TDI) and the amount of MC-LR as a harmful substance, which can be consumed daily over the lifetime of a human adult, with a negligible risk of adverse health effects. According to a 13-week mouse oral study with pure MC-LR and consequential liver histopathology and serum enzyme changes, a no-observed adverse effect level (NOAEL) of 40 µg/kg body weight (b.w.) per day was derived (Fawell et al. 1994, 1999; WHO 1998; Chorus and Bartram 1999). By applying a total uncertainty factor of 1000 (× 10 for inter-species variability, × 10 for intra-species variability and × 10 for limitations in the database: in particular a lack of data on chronic toxicity and carcinogenicity), and assuming an average daily water intake of 2 L for a human adult, with 0.8 of

the water requirement derived from the drinking water, a TDI of 0.04 $\mu\text{g MC-LR/kg b.w. per day}$ was derived. This TDI was supported by a 44-day study, in which groups of five pigs were given extracts of *M. aeruginosa* in their drinking water at dose levels calculated from potency estimates using the mouse i.p. bioassay to be equivalent to 280, 800 or 1,310 $\mu\text{g/kg b.w. per day}$ of MCs (assuming an average i.p. LD_{50} for MCs of 100 $\mu\text{g/kg b.w.}$) (Falconer et al. 1994; WHO 1998; Chorus and Bartram 1999). The dosed extracts contained at least seven MC variants, with MC-YR tentatively identified by high-performance liquid chromatography (HPLC) as the major constituent. After the exposure of the pigs, a comprehensive postmortem examination followed. Histopathological tissue samples were collected from the oesophageal and pyloric ends of the stomach, the duodenum, upper small intestine, colon, cecum, three regions of liver, kidney, testis, lung, heart and brain. There were no changes in the appearance of the organs in the exposed pigs. No changes related to cyanotoxin exposure could be seen by histopathological examination of samples of gastrointestinal tract, kidney, testis, lung, heart or brain. The liver samples showed damage at cell and tissue level in a dose-dependent manner. A lowest-observed adverse effect level (LOAEL) of 280 $\mu\text{g/kg b.w. per day}$ of MCs was identified, with general liver injury (evident from histopathology and changes in serum enzymes) observed at the two higher dose levels, of 800 and 1,310 $\mu\text{g/kg b.w. per day}$. At the lowest dose level, 280 $\mu\text{g/kg b.w. per day}$, one pig was affected. The authors determined the potency of their extract by mouse i.p. LD_{50} bioassay, HPLC analysis and by in vitro protein phosphatase inhibition assay (Falconer et al. 1994). Summation of the peak areas from the HPLC identification of MC variants, standardised against MC-LR, indicated that the LOAEL equated with 100 $\mu\text{g MC-LR equivalents per kg b.w. per day}$. To this LOAEL an overall uncertainty factor of 1,500 was applied, arrived at using 3 rather than 10 for inter-species variability (because pigs physiologically resemble humans more closely than rodents), 10 for intra-species variability, 5 for extrapolating from a LOAEL to a NOAEL (10 was considered inappropriate due to the low incidence of effects in the lowest dose group and the deduced shape of the dose–response curve) and 10 for the less-than-lifetime exposure. This resulted in a provisional TDI of 0.067 $\mu\text{g/kg b.w. per day}$. The lower of these two values, 0.04 $\mu\text{g/kg b.w. per day}$, has been used in deriving a provisional WHO drinking water guideline value (Chorus and Bartram 1999; Chen et al. 2018a; Chorus and Welker 2021).

Three examples of exposure that led to human poisonings highlight the toxicologically relevant concentrations of cyanotoxins. In the first case, an estimated concentration of 19.5 $\mu\text{g MC/L}$ of water used during haemodialysis treatment, i.e. the patients were i.v.-exposed to MC. A total of 116 patients experienced the ‘Caruaru Syndrome’, 100 of them

developed acute liver failure, and more than half of them died (Azevedo et al. 2002). In the second case, long-term consumption of cyanobacteria-based food supplements with 2.62–4.06 $\mu\text{g MC-LR/g dry weight (DW)}$ by a 34-year-old woman preceded her death due to liver failure. Although a causal relationship was not definitely established, MC-positive immunostaining was observed in the patient’s liver (Dietrich et al. 2007). In the third case, a young man manifesting nausea, abdominal pain, fever, dyspnea, respiratory distress, atypical pneumonia and hepatic damage was hospitalized and received intensive care after recreational exposure to- and immersion in a bloom of *Microcystis* sp. containing 48.6 $\mu\text{g MC-LR/L}$ of lake water. He finally recovered completely 20 days later (Giannuzzi et al. 2011).

In one study conducted by i.v. dosing, two concentrations of MC were tested (14 and 87 $\mu\text{g MC-LReq/kg}$) on rats (Qiu et al. 2009). The 14 $\mu\text{g MC-LReq/kg b.w.}$ slightly lowered heart rate and significantly reduced blood pressure, enhanced GST activity, slightly increased the cytosolic MDA level (malondialdehyde as a measurement of lipid peroxidation) and caused myocardial damage in the form of enlarged cells with enlarged and abnormally shaped nuclei, occasional cytoplasmic vacuolization and partially degenerated muscle fibres in the exposed rats. The heart rate was significantly decreased by 87 MC-LReq/kg . The authors (Qiu et al. 2009) concluded that the cardiotoxic effects of MC aggravated the pathogenesis of hypovolemic shock, and could thus present a new contributory factor in the haemodialysis patient deaths in Caruaru. The human poisoning case (Dietrich et al. 2007) of long-term oral consumption of dietary supplements containing 2,620–4,060 $\mu\text{g MC-LR/kg DW}$ is comparable to the 28 days’ exposure of rats to feed containing 700–25,000 $\mu\text{g MCs/kg feed}$ (Palikova et al. 2013). Significant changes in the red blood cell parameters were induced in the MC-exposed rats. The exposure also especially influenced the innate immune system represented by natural killer cells and by gamma–delta T cells, which were significantly increased in number in peripheral blood in the MC-exposed group (Palikova et al. 2013). Other human studies have been based on acute exposure: e.g. immersion in 48.6 $\mu\text{g MC-LR/L}$ of recreational water resulting in acute intoxication (Giannuzzi et al. 2011) is within the range of one study in which brown trout (*Salmo trutta* L.) were exposed to 5–500 $\mu\text{g MC-LR/L}$. The concentration of 50 $\mu\text{g MC-LR/L}$ caused increased heart rate, stroke volume and cardiac output of fish (Best et al. 2001). In general, the comparisons are rather difficult because the methods of research varied greatly, including the type of toxin, dose, manner and duration of exposure and the range of organisms used (i.e. inter-species variation should also be taken into account).

The acute i.p. toxicity of MC-LR is about 50 $\mu\text{g/kg}$ in mice. Assuming the same toxic potency in humans, a 60-kg person would thus die from a 3000 $\mu\text{g i.p. dose}$ of MC-LR.

As the typical concentration of MC in pelagic lake water is less than 10 µg/L (Fastner et al. 1999) the 60-kg person would thus need to be i.p. injected with a minimum of 300 L of lake water to die. The WHO-derived provisional guideline value of MC-LR in drinking water is 1 µg/L. The same person would thus need to be i.p. injected with 3000 L of such safe drinking water to die. The oral toxicity of MCs is even much lower than the i.p. toxicity (Falconer et al. 1994; WHO 1998; Chorus and Bartram 1999). These examples illustrate the need to conduct exposure studies at environmentally relevant concentrations to understand the true risks of cardiovascular diseases and other health problems caused by cyanotoxins.

Animal models used in studies of the cardiovascular toxicity of cyanotoxins

Since animal species differ in their responses to toxins, ideally at least two species (e.g. a rodent and a non-rodent) should be used in toxicity tests. If both express a similar adverse effect, it is possible that such an effect could appear in humans also. On the contrary, if the effect is exhibited in one species only, the reaction could be species-specific (Bhardwaj and Gupta 2012). Due to the behavioural practice of wild and domestic animals of drinking from natural and controlled water resources (i.e. the untreated water of lakes, rivers etc.) they may be more frequently and/or severely exposed to cyanobacteria and cyanotoxins than humans, making them good sentinels for potential human exposures. Resulting animal observations can give an approximation of what humans could experience (Backer and Miller 2016). Animal studies reported in the surveyed publications include (Table 10) mammals (46 studies: 41%), birds (6 studies: 5%), fish (57 studies: 51%) and amphibia (3 studies: 3%). The studies of invertebrates were not listed in the tables, but some studies on crustacea (*Penaeus monodon*, *Daphnia magna*, *Daphnia similis*) (Bownik and Pawlik-Skowrońska 2019; Ferrão-Filho and da Silva 2019) and on mollusca (*Elliptio complanata*, *Helix pomatia*) (Vehovszky et al. 2012) have been performed. Recently, mass mortalities of sea otters (Miller et al. 2010), dolphins (Brown et al. 2018) and African elephants (Wang et al. 2021a) have been attributed to cyanotoxin poisonings, although confirmatory investigations into the elephant deaths are required. If cyanotoxins can cause the deaths of megafauna, it is clear that humans can also be endangered, inter-species variability being taken into account. Extrapolation of a dose from animals to humans needs a consideration of the body surface area and body weight, life span, water-based behavioral characteristics and differences in toxicokinetics and toxicodynamics between species. Nair and Jacob (2016) have provided a guide for dose exchange between species during research, experiments and clinical trials.

For MC toxicity characterization the most detailed research has been conducted on rodents (Table 2), especially mice, since the latter have a comparatively higher sensitivity to MCs than other rodents such as rats (Fawell et al. 1999). Pigs have also been used as an experimental model in the determination of in vivo responses to cyanotoxins, since their gastrointestinal tract, liver and kidney functions, metabolic rates and body weights are similar to those of humans (Falconer et al. 1994; Swindle et al. 2012). Recent pig studies (Greer et al. 2018) investigated the effects of subchronic oral (gavage) exposure to MC-LR at a TDI of 0.04 µg/kg b.w. per day (98 days) and at 2 µg/kg b.w. per day (35 days): 50 times the TDI. MC-LR was not found in the serum of the gavaged animals, possibly due to the cyanotoxin being rapidly processed from the blood. However, free MC-LR was found in the large intestine and kidney, while bound MC-LR was detected in the pig livers, indicating a possible accumulation in human livers after oral, chronic and sublethal exposure. Concerning research on effects of MC and MC-producing cyanobacteria on the cardiovascular system in vivo (22 studies, Table 2), few studies have involved pigs (both acute, i.v. high doses) (Stotts et al. 1997; Beasley et al. 2000), while the majority of the studies have been with rodents, including nine investigations on mice and six studies on rats. The findings with pigs showed a rapid clearance of MC from the blood by the liver. Only a small fraction of the dose was rapidly secreted into the bile. At a potentially lethal dose, clearance was reduced (Stotts et al. 1997). Finally, the lethal effect from an acute MC-LR toxicosis can be considered a consequence of hypotensive, hypovolemic shock resulting from an obstruction of blood flow through the liver, severe haemorrhage and the destruction of liver parenchyma. The shock syndrome is further complicated by a reduction in circulating platelets, a partially compensated metabolic (lactic) acidosis, reduced renal perfusion and terminal hyperkalemia, as well as hypoglycemia (Beasley et al. 2000).

Although mammals should ideally be predominantly used in research to determine risks of cyanobacteria and cyanotoxins to humans via cardiotoxicity, the target organisms most studied are fish (57 studies, Table 4). Indeed, as aquatic vertebrates, they can serve as early sentinels for potential adverse effects from cyanobacteria and their toxins (Backer and Miller 2016), especially in natural conditions. One of the most researched fish regarding the effects of cyanotoxins on the cardiovascular system has been the zebrafish (*D. rerio*; 30 studies: 53% of all 57 fish studies), which can be considered an excellent vertebrate model and is extensively utilized in wider toxicity assessments (Shen and Zuo 2020). In the last 2 decades zebrafish have become increasingly popular in toxicology due to their small size, low maintenance cost, high fecundity, fast embryonic development, embryo transparency and some

similarities to mammalian systems (Selderslaghs et al. 2013). It seems likely that *Danio* spp. will continue to find wide-scale applications in vertebrate toxicology and with the contribution of zebrafish to characterizing cyanotoxin cardiotoxicity already having been established (Table 10). Another much-used fish species in this research is the tilapia (*Oreochromis niloticus*; 16 studies: 28% of all fish spp. investigated).

Conclusions and gaps in knowledge

Specific conclusions

Involvement of cyanotoxins in cardiovascular toxicity

The best studied group of cyanotoxins with cardiovascular effects are the MCs. Based on the reviewed papers, high enough acute doses of MCs (and some other cyanotoxins) have a toxic effect on myocardial cells, specific cells of the cardiac conduction system and pericardial cells. Pathological changes of the extracellular matrix and effects on vascular cells and blood cells also occur. Human cardiovascular health and other aspects of health can be further endangered during chronic exposure to low concentrations of cyanotoxins. The effects of MCs on the heart have been observed mainly through changes in heart rate (MCs interfering with blood flow and the rhythm of blood pumping), blood pressure (MCs increasing vascular permeability due to endothelial injuries) and effects on the heart muscles. Upon prolonged exposure, MCs can cause significant cytoskeletal alterations including enlargement of cardiomyocytes, loss of cell cross-striations, fibrosis and abnormal nuclei. Taken together, these results suggest that long-term exposure to relatively low doses of MCs can induce myocardial atrophy and fibrosis. The changes in heart rate are basically caused by mitochondrial dysfunction, whereas the changes in blood pressure are caused by increased protein content in blood capillaries (because of increased vascular permeability) and the damage to heart muscles is caused by ROS production and oxidative stress. All of these cellular and subcellular changes, together with damage to the endoplasmic reticulum caused by MCs, can lead to cardiomyopathy and heart failure.

Although less frequently detected and investigated, further cyanotoxins are present and can be harmful (Tables 2, 3, 4, 5, 6). Other cyanotoxins are far less studied than MCs (especially MC-LR) and it is necessary to study them more intensively in future research.

Purified cyanotoxins, cyanobacterial cell extracts and cyanobacterial biomass

Purified cyanotoxins are frequently used in toxicological research (Table 7) but this type of approach presents a limitation in toxicity studies, since it does not correspond to a natural exposure scenario where a mixture of toxic metabolites (and other compounds of various characteristics) are typically present. On the other hand, the use of cyanobacterial cell extracts may lead to confusing results as the attribution of toxicity among the mixture of diverse and potentially bioactive compounds cannot be unambiguous. Combinations can exert e.g. additive, synergistic and antagonistic toxicities and a certain concentration of a known toxin may have a different potency in a matrix. For these reasons it is encouraged to conduct studies with both pure toxins and cyanobacterial cell extracts.

Localization methods for cyanotoxins in cardiovascular systems

Recognition and understanding of the involvement of cyanotoxins in cardiotoxicity and -pathology could be aided by the application of more modern cyanotoxin-related analytical and localization methods to cardiac cells and tissues. For example, by analysis for cardiac protein phosphatase-MC covalent associations, and the subcellular localization of cyanotoxins by immunogold-electron microscopy (Young et al. 2005).

Exposure route

The most frequently involved natural and hitherto recognized exposure route is the oral route, with cyanotoxins occurring in environmental untreated- and ineffectively treated drinking waters, or recreational waters, or in food items. For this reason, further studies examining cyanobacterial toxicity should pay more attention to cyanotoxin exposure via the oral route. However, based on the collected data (Table 9), only 8 of 67 studies (12%) have employed oral exposure. The bulk of research is thus not directly comparable to the typical human exposure scenario which would typically involve repeated oral exposure through ingestion of drinking water and foodstuffs instead of e.g. a single i.p. injection.

Exposure to environmentally relevant cyanotoxin concentrations and chronic exposure

Tables 2, 3, 4, 5, 6 and 9 also show that research approaches vary greatly in the type of cyanotoxin, dose, manner and duration of exposure and the organisms used (i.e. interspecies variation should also be taken into account). Many of the concentrations used are much above any realistic

concentration found in a natural setting. There is thus a need to conduct the exposure studies at environmentally relevant cyanotoxin concentrations if the goal is to assess the real risks of cardiovascular and other health problems caused by cyanotoxins. There is also no real consensus about which durations of exposure should be understood as chronic and subchronic.

Human epidemiological research

The majority of the tested organisms have been rodents and fish (Table 10), while further species which are phylogenetically and physiologically closer to humans should also be included. Such an approach is needed to obtain a relevant picture of cardiovascular toxicity to humans. There are only a few case studies of human health problems known to have been associated with-, or caused by contact with cyanobacteria and their toxins. Medical professionals have not been employed in most cases to an optimal extent. Some cases have been described by non-medical professionals and postmortem and other pathological examinations are mostly missing. As there are plenty of populations which are naturally exposed to cyanotoxins in their drinking water one way forward in understanding the cardiovascular toxicity of cyanotoxins is to conduct epidemiological research.

Gaps in knowledge

Whilst this review has focused on the impacts of cyanotoxins on cardiovascular structure and function, it is recognised that these toxins can cause damage to multiple structural and physiological systems in the vertebrate body (causing hepatotoxicity, nephrotoxicity, neurotoxicity, genotoxicity, etc.). The degree to which these multiple outcomes are interlinked, with cardiovascular toxicity being a direct consequence of cyanotoxin exposure, or as part of a cascade of damage to the body's physiological systems requires investigation.

Whether the adverse effects of MCs, and potentially of NOD, on vertebrate cardiovascular structure and function arise only from an initial inhibition of protein phosphatases *in vivo* by these cyanotoxins also requires investigation. Indeed, understanding of whether such actions do include mechanisms without involving protein phosphatase inhibition is needed: *in vitro* studies have shown that purified MC-LR and NOD cause pore formation, weakening and electrical conductivity changes in synthetic lipid bilayer membranes (Petrov et al. 1991; Mellor et al. 1993), with no protein phosphatases in the assay systems.

Organic anion transporter polypeptides (OATPs) are expressed in several tissues including kidney, liver and brain (Nigam et al. 2015). They have a crucial role in the uptake and excretion of many xenobiotics and endogenous substances. It has been shown that the isoforms OATP1B1

and OATP1B3 mediate the uptake of MCs in hepatocytes (Fischer et al. 2010). As OATP1B1 and OATP1B3 are selectively expressed in the liver (Roth et al. 2012) and other OATP isoforms appear to have no or less affinity for MCs, the effects of these toxins are more pronounced in the liver tissue. As there are tissues where OATPs with high affinity for MCs are not present, but effects still can be seen, it is plausible to assume that either other transporters or other (passive) uptake mechanisms for MCs are in place in these tissues. MCs are relatively polar molecules while the more hydrophobic amino acid residues in some of them could be expected to have an influence on their toxicokinetics and possibly also on their toxicity (Ward and Codd 1999). Indeed, MC-LW and MC-LF showed a higher surface activity than MC-LR on a phosphatidylcholine-cholesterol monolayer when tested by biophysical methods (Vestervik and Meriluoto 2003). A follow-up study showed that MC-LW and MC-LF induced stronger cytotoxic effects on Caco-2 cells than MC-LR (Vestervik et al. 2012). By analogy, it could be hypothesized that the more hydrophobic MCs could have a higher cardiovascular toxicity than the more hydrophilic congeners.

It is likely that there are additional toxic substances and medical conditions which might potentiate the adverse (cardiovascular) effects of cyanotoxins but the data on this topic are scarce. One interesting aspect is whether the COVID-19 disease known to have cardiovascular effects (Salabei et al. 2022; Xie et al. 2022) may have any interactions with cyanobacterial toxicity.

Overall conclusions

In the light of the presented evidence, it is likely that cyanotoxins do not constitute a major risk to cardiovascular health under ordinary conditions met in everyday life. The risk of illnesses in other organs, in particular the liver, is higher under the same exposure conditions. However, cardiovascular effects could be expected due to indirect effects arising from damage in other organs. In addition to risks related to extraordinary concentrations of the cyanotoxins and atypical exposure routes, chronic exposure and co-existing diseases could make some of the cyanotoxins more hazardous to cardiovascular health.

It is generally concluded that the emphasis in future research should thus be on oral, chronic exposure of mammalian species, including at environmentally relevant concentrations. It is also necessary that *in vivo* experiments are conducted in parallel with studies on cells and tissues. It would be extremely beneficial to attract more medical professionals to cyanotoxin research ranging from molecular level studies to epidemiology. The efforts should finally lead to environmental health guidelines aiming at human health protection.

Acknowledgements This research was supported by the Science Fund of the Republic of Serbia, #7726976, Integrated Strategy for Rehabilitation of Disturbed Land Surfaces and Control of Air Pollution–RECAP. The authors acknowledge financial support of the Ministry of Education, Science and Technological Development of the Republic of Serbia (Grant No. 451-03-68/2022-14/200125). Dr. Liang Chen was funded by the National Natural Science Foundation of China (31901186), the Special Project for Social Development of Yunnan Province (202103AC100001), and the Natural Science Project of Shaanxi Province (2020JQ-615).

Declarations

Conflict of interest The authors declare that they have no conflict of interest.

References

- Adeyemo OM, Sirén AL (1992) Cardio-respiratory changes and mortality in the conscious rat induced by (+)- and (±)-anatoxin-a. *Toxicol* 30:899–905. [https://doi.org/10.1016/0041-0101\(92\)90388-L](https://doi.org/10.1016/0041-0101(92)90388-L)
- Alosman M, Cao L, Massey IY, Yang F (2020) The lethal effects and determinants of microcystin-LR on heart: a mini review. *Toxin Rev* 40:517–526. <https://doi.org/10.1080/15569543.2019.1711417>
- Atencio L, Moreno I, Jos A, Pichardo S, Moyano R, Blanco A, Cameán AM (2008a) Dose-dependent antioxidant responses and pathological changes in tenca (*Tinca tinca*) after acute oral exposure to *Microcystis* under laboratory conditions. *Toxicol* 52:1–12. <https://doi.org/10.1016/j.toxicol.2008.05.009>
- Atencio L, Moreno I, Prieto AI, Moyano R, Molina AM, Cameán AM (2008b) Acute effects of microcystins MC-LR and MC-RR on acid and alkaline phosphatase activities and pathological changes in intraperitoneally exposed tilapia fish (*Oreochromis* sp.). *Toxicol Pathol* 36:449–458. <https://doi.org/10.1177/0192623308315356>
- Atencio L, Moreno I, Jos A, Prieto AI, Moyano R, Blanco A, Cameán AM (2009) Effects of dietary selenium on the oxidative stress and pathological changes in tilapia (*Oreochromis niloticus*) exposed to a microcystin-producing cyanobacterial water bloom. *Toxicol* 53:269–282. <https://doi.org/10.1016/j.toxicol.2008.11.011>
- Azevedo SMFO, Carmichael WW, Jochimsen EM, Rinehart KL, Lau S, Shaw GR, Eaglesham GK (2002) Human intoxication by microcystins during renal dialysis treatment in Caruaru-Brazil. *Toxicology* 181–182:441–446. [https://doi.org/10.1016/S0300-483X\(02\)00491-2](https://doi.org/10.1016/S0300-483X(02)00491-2)
- Backer LC, Miller M (2016) Sentinel animals in a one health approach to harmful cyanobacterial and algal blooms. *Vet Sci* 3:8. <https://doi.org/10.3390/vetsci3020008>
- Bagu JR, Sykes BD, Craig MM, Holmes CFB (1997) A molecular basis for different interactions of marine toxins with protein phosphatase-1: molecular models for bound motuporin, microcystins, okadaic acid, and calyculin A. *J Biol Chem* 272:5087–5097. <https://doi.org/10.1074/jbc.272.8.5087>
- Ballot A, Bernard C, Fastner J (2017) Saxitoxin and analogues. In: Meriluoto J, Spoof L, Codd GA (eds) *Handbook of cyanobacterial monitoring and cyanotoxin analysis*. Wiley, Chichester, pp 148–154
- Basu A, Kozikowski AP, Lazo JS (1992) Structural requirements of lyngbyatoxin A for activation and downregulation of protein kinase C. *Biochemistry* 31:3824–3830. <https://doi.org/10.1021/bi00130a013>
- Batista T, de Sousa G, Suput JS, Rahmani R, Šuput D (2003) Microcystin-LR causes the collapse of actin filaments in primary human hepatocytes. *Aquat Toxicol* 65:85–91. [https://doi.org/10.1016/S0166-445X\(03\)00108-5](https://doi.org/10.1016/S0166-445X(03)00108-5)
- Beasley VR, Lovell RA, Holmes KR, Walcott HE, Schaeffer DJ, Hoffmann WE, Carmichael WW (2000) Microcystin-LR decreases hepatic and renal perfusion, and causes circulatory shock, severe hypoglycemia, and terminal hyperkalemia in intravascularly dosed swine. *J Toxicol Environ Health Part A* 61:281–303. <https://doi.org/10.1080/00984100050136599>
- Benton BJ, Rivera VR, Hewetson JF, Chang FCT (1994) Reversal of saxitoxin-induced cardiorespiratory failure by a burro-raised α -STX antibody and oxygen therapy. *Toxicol Appl Pharmacol* 124:39–51. <https://doi.org/10.1006/taap.1994.1006>
- Bernard C, Harvey M, Briand JF, BiréR KS, Fontaine JJ (2003) Toxicological comparison of diverse *Cylindrospermopsis raciborskii* strains: evidence of liver damage caused by a French *C. raciborskii* strain. *Environ Toxicol* 18:176–186. <https://doi.org/10.1002/tox.10112>
- Best JH, Eddy FB, Codd GA (2001) Effects of purified microcystin-LR and cell extracts of *Microcystis* strains PCC 7813 and CYA 43 on cardiac function in brown trout (*Salmo trutta*) alevins. *Fish Physiol Biochem* 24:171–178. <https://doi.org/10.1023/A:1014081827372>
- Bhardwaj S, Gupta D (2012) Study of acute, Sub acute and chronic toxicity test. *Int J Cur Biomed Phar Res* 2:103–129
- Bláha L, Babica P, Maršálek B (2009) Toxins produced in cyanobacterial water blooms—toxicity and risks. *Interdiscip Toxicol* 2:36–41. <https://doi.org/10.2478/v10102-009-0006-2>
- Bláhová L, Babica P, Adamovský O, Kohoutek J, Maršálek B, Bláha L (2008) Analyses of cyanobacterial toxins (microcystins, cylindrospermopsin) in the reservoirs of the Czech Republic and evaluation of health risks. *Environ Chem Lett* 6:223–227. <https://doi.org/10.1007/s10311-007-0126-x>
- Bouaïcha N, Miles CO, Beach DG, Labidi Z, Djabri A, Benayache NY, Nguyen-Quang T (2019) Structural diversity, characterization and toxicology of microcystins. *Toxins* 11:714. <https://doi.org/10.3390/toxins11120714>
- Bownik A, Pawlik-Skowrońska B (2019) Early indicators of behavioral and physiological disturbances in *Daphnia magna* (Cladocera) induced by cyanobacterial neurotoxin anatoxin-a. *Sci Total Environ* 695:133913. <https://doi.org/10.1016/j.scitotenv.2019.133913>
- Brown A, Foss A, Miller MA, Gibson Q (2018) Detection of cyanotoxins (microcystins/nodularins) in livers from estuarine and coastal bottlenose dolphins (*Tursiops truncatus*) from Northeast Florida. *Harmful Algae* 76:22–34. <https://doi.org/10.1016/j.hal.2018.04.011>
- Bruno M, Ploux O, Metcalf JS, Mejean A, Pawlik-Skowronska B, Furey A (2017) Anatoxin-a, homoanatoxin-a, and natural analogues. In: Meriluoto J, Spoof L, Codd GA (eds) *Handbook of cyanobacterial monitoring and cyanotoxin analysis*. Wiley, Chichester, pp 138–147
- Buratti FM, Manganelli M, Vichi S, Stefanelli M, Scardala S, Testai E, Funari E (2017) Cyanotoxins: producing organisms, occurrence, toxicity, mechanism of action and human health toxicological risk evaluation. *Arch Toxicol* 91:1049–1130. <https://doi.org/10.1007/s00204-016-1913-6>
- Caban-Holt A, Mattingly M, Cooper G, Schmitt FA (2005) Neurodegenerative memory disorders: a potential role of environmental toxins. *Neurol Clin* 23:485–521. <https://doi.org/10.1016/j.ncl.2004.12.005>
- Campos A, Vasconcelos V (2010) Molecular mechanisms of microcystin toxicity in animal cells. *Int J Mol Sci* 11:268–287. <https://doi.org/10.3390/ijms11010268>

- Cao L, Huang F, Massey IY, Wen C, Zheng S, Xu S, Yang F (2019a) Effects of microcystin-LR on the microstructure and inflammation-related factors of jejunum in mice. *Toxins* 11:482. <https://doi.org/10.3390/toxins11090482>
- Cao L, Massey IY, Feng H, Yang F (2019b) A review of cardiovascular toxicity of microcystins. *Toxins* 11:507. <https://doi.org/10.3390/toxins11090507>
- Carbis CR, Rawlin GT, Mitchell GF, Anderson JW, McCauley I (1996) The histopathology of carp, *Cyprinus carpio* L., exposed to microcystins by gavage, immersion and intraperitoneal administration. *J Fish Dis* 19:199–207. <https://doi.org/10.1111/j.1365-2761.1996.tb00126.x>
- Cardona T, Sánchez-Baracaldo P, Rutherford AW, Larkum AW (2018) Early Archaeal origin of photosystem II. *Geobiology* 17:127–150. <https://doi.org/10.1111/gbi.12322>
- Chang FCT, Benton BJ, Lenz RA, Capacio BR (1993) Central and peripheral cardio-respiratory effects of saxitoxin (STX) in urethane-anesthetized guinea-pigs. *Toxicon*. [https://doi.org/10.1016/0041-0101\(93\)90119-4](https://doi.org/10.1016/0041-0101(93)90119-4)
- Chen L, Xie P (2016) Mechanisms of microcystin-induced cytotoxicity and apoptosis. *Mini Rev Med Chem* 16:1018–1031. <https://doi.org/10.2174/1389557516666160219130407>
- Chen L, Zhang X, Zhou W, Qiao Q, Liang H, Li G, Wang J, Cai F (2013) The interactive effects of cytoskeleton disruption and mitochondria dysfunction lead to reproductive toxicity induced by microcystin-LR. *PLoS ONE* 8:e53949. <https://doi.org/10.1371/journal.pone.0053949>
- Chen L, Chen J, Zhang X, Xie P (2016a) A review of reproductive toxicity of microcystins. *J Hazard Mater* 301:381–399. <https://doi.org/10.1016/j.jhazmat.2015.08.041>
- Chen L, Li S, Guo X, Xie P, Chen J (2016b) The role of GSH in microcystin-induced apoptosis in rat liver: Involvement of oxidative stress and NF- κ B. *Environ Toxicol* 31:552–560. <https://doi.org/10.1002/tox.22068>
- Chen L, Hu Y, He J, Chen J, Giesy JP, Xie P (2017) Responses of the proteome and metabolome in livers of zebrafish exposed chronically to environmentally relevant concentrations of microcystin-LR. *Environ Sci Technol* 51:596–607. <https://doi.org/10.1021/acs.est.6b03990>
- Chen L, Giesy JP, Xie P (2018a) The dose makes the poison. *Sci Total Environ* 621:649–653. <https://doi.org/10.1016/j.scitotenv.2017.11.218>
- Chen L, Wang Y, Giesy JP, Chen F, Shi T, Chen J, Xie P (2018b) Microcystin-LR affects the hypothalamic-pituitary-interrenal (HPI) axis in early life stages (embryos and larvae) of zebrafish. *Environ Pollut* 241:540–548. <https://doi.org/10.1016/j.envpol.2018.05.024>
- Chen L, Liu X, Pan Z, Liu S, Han H, Zhao C, Tang X (2018c) The role of IL-8/CXCR2 signaling in microcystin-LR triggered endothelial cell activation and increased vascular permeability. *Chemosphere* 194:43–48. <https://doi.org/10.1016/j.chemosphere.2017.11.120>
- Chen G, Jia Z, Wang L, Hu T (2020a) Effect of acute exposure of saxitoxin on development of zebrafish embryos (*Danio rerio*). *Environ Res* 185:109432. <https://doi.org/10.1016/j.envres.2020.109432>
- Chen G, Wang L, Li W, Zhang Q, Hu T (2020b) Nodularin induced oxidative stress contributes to developmental toxicity in zebrafish embryos. *Ecotoxicol Environ Safety* 194:110444. <https://doi.org/10.1016/j.ecoenv.2020.110444>
- Chen G, Wang L, Wang M, Hu T (2021a) Comprehensive insights into the occurrence and toxicological issues of nodularins. *Mar Pollut Bull* 162:111884. <https://doi.org/10.1016/j.marpolbul.2020.111884>
- Chen L, Giesy JP, Adamovsky O, Svirčev Z, Meriluoto J, Codd GA, Mijovic B, Shi T, Tuo X, Li SC, Pan BZ, Chen J, Xie P (2021b) Challenges of using blooms of *Microcystis* spp. in animal feeds: a comprehensive review of nutritional, toxicological and microbial health evaluation. *Sci Total Environ*. <https://doi.org/10.1016/j.scitotenv.2020.142319>
- Chen L, Shi T, Wang YT, He J, Zhao X, Wang YK, Giesy JP, Chen F, Chen Y, Tuo X, Chen J, Xie P (2021c) Effects of acute exposure to microcystins on hypothalamic-pituitary-adrenal (HPA), -gonad (HPG) and -thyroid (HPT) axes of female rats. *Sci Total Environ* 778:145196. <https://doi.org/10.1016/j.scitotenv.2021.145196>
- Cheng H, Yan W, Wu Q, Liu C, Gong X, Huang TC, Li G (2017) Parental exposure to microcystin-LR induced thyroid endocrine disruption in zebrafish offspring, a transgenerational toxicity. *Environ Pollut* 230:981–988. <https://doi.org/10.1016/j.envpol.2017.07.061>
- Chichova M, Tasinov O, Shkodrova M, Mishonova M, Sazdova I, Ilieva B, Doncheva-Stoimenova D, Kiselova-Kaneva Y, Raikova N, Uzunov B, Ivanova D, Gagov H (2021) New Data on Cylindrospermopsin Toxicity *Toxins* 13:41. <https://doi.org/10.3390/toxins13010041>
- Chorus I, Bartram J (eds) (1999) Toxic cyanobacteria in water: a guide to their public health consequences, monitoring and management. E & FN Spon, London
- Chorus I, Welker M (eds) (2021) Toxic Cyanobacteria in Water, 2nd edn. CRC Press, Oxon
- Christensen VG, Khan E (2020) Freshwater neurotoxins and concerns for human, animal, and ecosystem health: A review of anatoxin-a and saxitoxin. *Sci Total Environ* 736:139515. <https://doi.org/10.1016/j.scitotenv.2020.139515>
- Codd GA, Bell SG, Kaya K, Ward CJ, Beattie KA, Metcalf JS (1999) Cyanobacterial toxins, exposure routes and human health. *Eur J Phycol* 34:405–415. <https://doi.org/10.1080/09670269910001736462>
- Codd GA, Morrison LF, Metcalf JS (2005) Cyanobacterial toxins: risk management for health protection. *Toxicol Appl Pharmacol* 203:264–272. <https://doi.org/10.1016/j.taap.2004.02.016>
- Colas S, Marie B, Lance E, Quiblier C, Tricoire-Leignel H, Mattei C (2021) Anatoxin-a: overview on a harmful cyanobacterial neurotoxin from the environmental scale to the molecular target. *Environ Res* 193:110590. <https://doi.org/10.1016/j.envres.2020.110590>
- Cook WO, Iwamoto GA, Schaeffer DJ, Carmichael WW, Beasley VR (1990) Pathophysiological effects of anatoxin-a(s) in anaesthetized rats: the influence of atropine and artificial respiration. *Pharmacol Toxicol* 67:151–155. <https://doi.org/10.1111/j.1600-0773.1990.tb00802.x>
- Dietrich D, Ernst B, Day B (2007) Human consumer death and algal supplement consumption: A postmortem assessment of potential microcystin-intoxication via microcystin immunohistochemical (MC-IHC) analyses. In Proceedings of the 7th International Conference on Toxic Cyanobacteria, Rio de Janeiro, Brazil. p 132
- Dittmann E, Wiegand C (2006) Cyanobacterial toxins-occurrence, biosynthesis and impact on human affairs. *Mol Nutr Food Res* 50:7–17. <https://doi.org/10.1002/mnfr.200500162>
- Drobac D, Tokodi N, Simeunović J, Baltić V, Stanić D, Svirčev Z (2013) Human exposure to cyanotoxins and their effects on health. *Arh Hig Rada Toksikol* 64:305–306. <https://doi.org/10.2478/10004-1254-64-2013-2320>
- Du X, Liu H, Yuan L, Wang Y, Ma Y, Wang R, Chen X, Losiewicz MD, Guo H, Zhang H (2019) The diversity of cyanobacterial toxins on structural characterization, distribution and identification: a systematic review. *Toxins* 11:530. <https://doi.org/10.3390/toxins11090530>
- Dube SN, Mazumder PK, Kumar D, Rao PVL, Bhaskar ASB (1996) Cardiorespiratory and neuromuscular effects of freshwater cyanophyte *Anabaena flos-aquae* in rats. *Def Sci J* 46:135–141

- Dunlop RA, Banack SA, Bishop SL, Metcalf JS, Murch SJ, Davis DA, Stommel EW, Karlsson O, Brittebo EB, Chatziefthimiou AD, Tan VX, Guillemin GG, Cox PA, Mash DC, Bradley WG (2021) Is exposure to BMAA a risk factor for neurodegenerative diseases? A response to a critical review of the BMAA hypothesis. *Neurotox Res* 39:81–106. <https://doi.org/10.1007/s12640-020-00302-0>
- Falconer IR, Humpage AR (2006) Cyanobacterial (blue-green algal) toxins in water supplies: Cylindrospermopsins. *Environ Toxicol* 21:299–304. <https://doi.org/10.1002/tox.20194>
- Falconer IR, Jackson ARB, Langley J, Runnegar MT (1981) Liver pathology in mice in poisoning by the blue-green alga *Microcystis aeruginosa*. *Aust J Biol Sci* 34:179–187. <https://doi.org/10.1071/BI9810179>
- Falconer IR, Beresford AM, Runnegar MTC (1983) Evidence of liver damage by toxin from a bloom of the blue-green alga, *Microcystis aeruginosa*. *Med J Aust* 1:511–514. <https://doi.org/10.5694/j.1326-5377.1983.tb136192.x>
- Falconer IR, Burch MD, Steffensen DA, Choice M, Coverdale OR (1994) Toxicity of the blue-green-alga (cyanobacterium) *Microcystis aeruginosa* in drinking water to growing pigs, as an animal model for human injury and risk assessment. *Environ Toxicol Water Qual* 9:131–139. <https://doi.org/10.1002/tox.2530090209>
- Fastner J, Neumann U, Wirsing B, Weckesser J, Wiedner C, Nixdorf B, Chorus I (1999) Microcystins (hepatotoxic heptapeptides) in German freshwater bodies. *Environ Toxicol* 14:13–22. [https://doi.org/10.1002/\(SICI\)1522-7278\(199902\)14:1%3c13::AID-TOX4%3e3.0.CO;2-D](https://doi.org/10.1002/(SICI)1522-7278(199902)14:1%3c13::AID-TOX4%3e3.0.CO;2-D)
- Fawell JK, Mitchell RE, Everett DJ, Hill RE (1999) The toxicity of cyanobacterial toxins in the mouse: I microcystin-LR. *Hum Exp Toxicol* 18:162–167. <https://doi.org/10.1177/096032719901800305>
- Fawell JK, James CP, James HA (1994) Toxins from blue-green algae: Toxicological assessment of microcystin-LR and a method for its determination in water. Marlow: Water Research Centre, UK
- Ferrão-Filho ADS, da Silva DAC (2019) Saxitoxin-producing *Raphidiodopsis raciborskii* (cyanobacteria) inhibits swimming and physiological parameters in *Daphnia similis*. *Sci Total Environ* 706:135751. <https://doi.org/10.1016/j.scitotenv.2019.135751>
- Feurstein D, Kleinteich J, Heussner AH, Stemmer K, Dietrich DR (2010) Investigation of microcystin congener-dependent uptake into primary murine neurons. *Environ Health Perspect* 118:1370–1375. <https://doi.org/10.1289/ehp.0901289>
- Fiore MF, de Lima ST, Carmichael WW, McKinnie SMK, Chekan JR, Moore BS (2020) Guanitoxin, re-naming a cyanobacterial organophosphate toxin. *Harmful Algae* 92:101937. <https://doi.org/10.1016/j.hal.2019.101737>
- Fischer WJ, Dietrich DR (2000) Pathological and biochemical characterization of microcystin-induced hepatopancreas and kidney damage in carp (*Cyprinus carpio*). *Toxicol Appl Pharmacol* 164:73–81. <https://doi.org/10.1006/taap.1999.8861>
- Fischer A, Hoeger SJ, Stemmer K, Feurstein DJ, Knobloch D, Nussler A, Dietrich DR (2010) The role of organic anion transporting polypeptides (OATPs/SLCOs) in the toxicity of different microcystin congeners *in vitro*: a comparison of primary human hepatocytes and OATP-transfected HEK293 cells. *Toxicol Appl Pharmacol* 245:9–20. <https://doi.org/10.1016/j.taap.2010.02.006>
- Fleming LE, Rivero C, Burns J, Williams C, Bean JA, Shea KA, Stinn J (2002) Blue-green algal (cyanobacterial) toxins, surface drinking water, and liver cancer in Florida. *Harmful Algae* 1:157–168. [https://doi.org/10.1016/S1568-9883\(02\)00026-4](https://doi.org/10.1016/S1568-9883(02)00026-4)
- Fujiki H, Mori M, Nakayasu M, Terada M, Sugimura T, Moore RE (1981) Indole alkaloids: Dihydroteleocidin B, teleocidin, and lyngbyatoxin A as members of a new class of tumor promoters. *Proc Natl Acad Sci USA* 78:3872–3876. <https://doi.org/10.1073/pnas.78.6.3872>
- Gaudin J, Huet S, Jarry G, Fessard V (2008) *In vivo* DNA damage induced by the cyanotoxin microcystin-LR: comparison of intraperitoneal and oral administrations by use of the comet assay. *Mutat Res* 652:65–71. <https://doi.org/10.1016/j.mrgentox.2007.10.024>
- Giannuzzi L, Sedan D, Echenique R, Andrinolo D (2011) An acute case of intoxication with cyanobacteria and cyanotoxins in recreational water in Salto Grande Dam, Argentina. *Mar Drugs* 9:2164–2175. <https://doi.org/10.3390/md9112164>
- Grandjean P (2016) Paracelsus revisited: the dose concept in a complex world. *Basic Clin Pharmacol Toxicol* 119:126–132. <https://doi.org/10.1111/bcpt.12622>
- Greer B, Meneely JP, Elliott CT (2018) Uptake and accumulation of microcystin-LR based on exposure through drinking water: an animal model assessing the human health risk. *Sci Rep* 8:4913. <https://doi.org/10.1038/s41598-018-23312-7>
- Gutiérrez-Praena D, Jos A, Pichardo S, Cameán AM (2011) Oxidative stress responses in tilapia (*Oreochromis niloticus*) exposed to a single dose of pure cylindrospermopsin under laboratory conditions: influence of exposure route and time of sacrifice. *Aquat Toxicol* 105:100–106. <https://doi.org/10.1016/j.aquatox.2011.05.015>
- Gutiérrez-Praena D, Jos Á, Pichardo S, Moyano R, Blanco A, Monterde JG, Cameán AM (2012a) Time-dependent histopathological changes induced in Tilapia (*Oreochromis niloticus*) after acute exposure to pure cylindrospermopsin by oral and intraperitoneal route. *Ecotoxicol Environ Saf* 76:102–113. <https://doi.org/10.1016/j.ecoenv.2011.10.008>
- Gutiérrez-Praena D, Pichardo S, Jos Á, Moreno FJ, Cameán AM (2012b) Alterations observed in the endothelial HUVEC cell line exposed to pure cylindrospermopsin. *Chemosphere* 89:1151–1160. <https://doi.org/10.1016/j.chemosphere.2012.06.023>
- Gutiérrez-Praena D, Rialde MA, Pichardo S, Jos A, Moyano R, Blanco A, Vasconcelos V, Cameán AM (2014) Histopathological and immunohistochemical analysis of tilapia (*Oreochromis niloticus*) exposed to cylindrospermopsin and the effectiveness of N-acetylcysteine to prevent its toxic effects. *Toxicol* 78:18–34. <https://doi.org/10.1016/j.toxicol.2013.11.014>
- Guzmán-Guillén R, Prieto AI, Moreno I, Vasconcelos VM, Moyano R, Blanco A, Cameán Fernández AM (2015) Cyanobacterium producing cylindrospermopsin cause histopathological changes at environmentally relevant concentrations in subchronically exposed tilapia (*Oreochromis niloticus*). *Environ Toxicol* 30:261–277. <https://doi.org/10.1002/tox.21904>
- Guzmán-Guillén R, Prieto Ortega AI, Gutiérrez-Praena D, Moreno IM, Moyano R, Blanco A, Cameán AM (2016) Vitamin E pretreatment prevents histopathological effects in tilapia (*Oreochromis niloticus*) acutely exposed to cylindrospermopsin. *Environ Toxicol* 31:1469–1485. <https://doi.org/10.1002/tox.22152>
- Guzmán-Guillén R, Prieto Ortega AI, Moyano R, Blanco A, Vasconcelos V, Cameán AM (2017) Dietary L-carnitine prevents histopathological changes in tilapia (*Oreochromis niloticus*) exposed to cylindrospermopsin. *Environ Toxicol* 32:241–254. <https://doi.org/10.1002/tox.22229>
- Harada KI, Matsuyama K, Suzuki M, Watanabe MF, Oishi S, Dahlem AM, Batsley VR, Carmichael WW (1990) Isolation and characterization of the minor components associated with microcystins LR and RR in the cyanobacterium (blue-green algae). *Toxicol* 28:55–64. [https://doi.org/10.1016/0041-0101\(90\)90006-s](https://doi.org/10.1016/0041-0101(90)90006-s)
- Hastie CJ, Borthwick EB, Morrison LF, Codd GA, Cohen PTW (2005) Inhibition of several protein phosphatases by a non-covalently interacting microcystin and a novel cyanobacterial peptide, nosocylin. *Biochim Biophys Acta* 1726:187–193. <https://doi.org/10.1016/j.bbagen.2005.06.005>

- Hou J, Li L, Xue T, Long M, Su Y, Wu N (2015) Hepatic positive and negative antioxidant responses in zebrafish after intraperitoneal administration of toxic microcystin-LR. *Chemosphere* 120:729–736. <https://doi.org/10.1016/j.chemosphere.2014.09.079>
- Huang X, Zhang Y, Xiao W, Ye X, Zhong Q, Gu K (2013) Comparison of response indices to toxic microcystin-LR in blood of mice. *Chemosphere* 92:563–569. <https://doi.org/10.1016/j.chemosphere.2013.04.006>
- Huisman J, Codd GA, Paerl HW, Ibelings BW, Verspagen JMH, Visser PM (2018) Cyanobacterial blooms. *Nat Rev Microbiol* 16:471–483. <https://doi.org/10.1038/s41579-018-0040-1>
- Humpage AR, Falconer IR (2003) Oral toxicity of the cyanobacterial toxin cylindrospermopsin in male Swiss albino mice: determination of no observed adverse effect level for deriving a drinking water guideline value. *Environ Toxicol* 18:94–103. <https://doi.org/10.1002/tox.10104>
- Hyde EG, Carmichael WW (1991) Anatoxin-a(s), a naturally occurring organophosphate, is an irreversible active site-directed inhibitor of acetylcholinesterase (EC 3.1.1.7). *J Biochem Toxicol* 6:195–201. <https://doi.org/10.1002/jbt.2570060305>
- Ito E, Kondo F, Harada KI (2000) First report on the distribution of orally administered microcystin-LR in mouse tissue using an immunostaining method. *Toxicon* 38:37–48. [https://doi.org/10.1016/S0041-0101\(99\)00084-7](https://doi.org/10.1016/S0041-0101(99)00084-7)
- Ito E, Satake M, Yasumoto T (2002) Pathological effects of lyngbyatoxin A upon mice. *Toxicol* 40:551–556. [https://doi.org/10.1016/S0041-0101\(01\)00251-3](https://doi.org/10.1016/S0041-0101(01)00251-3)
- Janssen EML (2019) Cyanobacterial peptides beyond microcystins—a review on co-occurrence, toxicity, and challenges for risk assessment. *Water Res* 151:488–499. <https://doi.org/10.1016/j.watres.2018.12.048>
- Jiang W, Zhou W, Uchida H, Kikumori M, Irie K, Watanabe R, Suzuki T, Sakamoto B, Kamio M, Nagai H (2014) A new lyngbyatoxin from the Hawaiian cyanobacterium *Moorea producens*. *Mar Drugs* 12:2748–2759. <https://doi.org/10.3390/md12052748>
- Kankaanpää HT, Holliday J, Schröder H, Goddard TJ, von Fister R, Carmichael WW (2005) Cyanobacteria and prawn farming in northern New South Wales, Australia—a case study on cyanobacteria diversity and hepatotoxin bioaccumulation. *Toxicol Appl Pharmacol* 203:243–256. <https://doi.org/10.1016/j.taap.2004.04.012>
- Kao CY (1993) Paralytic shellfish poisoning. In: Falconer IR (ed) *Algal toxins in seafood and drinking water*. Academic Press, San Diego (CA), pp 75–86
- Khoshnamvand M, Hao Z, Fadare OO, Hanachi P, Chen Y, Liu J (2020) Toxicity of biosynthesized silver nanoparticles to aquatic organisms of different trophic levels. *Chemosphere* 258:127346. <https://doi.org/10.1016/j.chemosphere.2020.127346>
- Kinnear SHW, Fabbro LD, Duijvenvoorden LJ, Hibberd EMA (2007) Multiple-organ toxicity resulting from cylindrospermopsin exposure in tadpoles of the cane toad (*Bufo marinus*). *Environ Toxicol* 22:550–558. <https://doi.org/10.1002/tox.20299>
- Kokociński M, Cameán AM, Carmeli S, Guzmán-Guillén R, Jos A, Mankiewicz-Boczek J, Metcalf JS, Moreno AM, Prieto AI, Sukeńnik A (2017a) Cylindrospermopsin and congeners. (Meriluoto J, Spoof L, Codd, GA) *Handbook of cyanobacterial monitoring and cyanotoxin analysis*. Wiley, Chichester, pp 127–137
- Kokociński M, Gaęła I, Jasser I, Karosienė J, Kasperovičienė J, Kobos J, Koreivienė J, Sojininen J, Szczyrowska A, Woszczyk M, Mankiewicz-Boczek J (2017b) Distribution of invasive *Cylindrospermopsis raciborskii* in the East-Central Europe is driven by climatic and local environmental variables. *FEMS Microbiol Ecol*. <https://doi.org/10.1093/femsec/fix035>
- Konst H, McKercher PD, Gorham PR, Robertson A, Howell J (1965) Symptoms and pathology produced by toxic *Microcystis aeruginosa* NRC-1 in laboratory and domestic animals. *Can J Compar Med Vet Sci* 29:221–228
- Kujbida P, Hatanaka E, Campa A, Curi R, Farsky SHP, Pinto E (2008) Analysis of chemokines and reactive oxygen species formation by rat and human neutrophils induced by microcystin-LA, -YR and -LR. *Toxicol* 51:1274–1280. <https://doi.org/10.1016/j.toxicol.2008.02.013>
- Kujbida P, Hatanaka E, Vinolo MAR, Waisman K, de Holanda Cavalcanti DM, Curi R, Farsky SHP, Pinto E (2009) Microcystins -LA, -YR, and -LR action on neutrophil migration. *Biochem Biophys Res Commun* 382:9–14. <https://doi.org/10.1016/j.bbrc.2009.02.009>
- Lankoff A, Carmichael WW, Grasman KA, Yuan M (2004) The uptake kinetics and immunotoxic effects of microcystin-LR in human and chicken peripheral blood lymphocytes *in vitro*. *Toxicology* 204:23–40. <https://doi.org/10.1016/j.tox.2004.05.016>
- LeClaire RD, Parker GW, Franz DR (1995) Hemodynamic and calorimetric changes induced by microcystin-LR in the rat. *J Appl Toxicol* 15:303–311. <https://doi.org/10.1002/jat.2550150412>
- Lei H, Xie P, Chen J, Liang G, Dai M, Zhang X (2008a) Distribution of toxins in various tissues of crucian carp intraperitoneally injected with hepatotoxic microcystins. *Environ Toxicol Chem* 27:1167–1174. <https://doi.org/10.1897/07-522.1>
- Lei H, Xie P, Chen J, Liang G, Yu T, Jiang Y (2008b) Tissue distribution and depuration of the extracted hepatotoxic cyanotoxin microcystins in crucian carp (*Carassius carassius*) intraperitoneally injected at a sublethal dose. *Sci World J* 8:713–719. <https://doi.org/10.1100/tsw.2008.101>
- Lezcano N, Sedán D, Lucotti I, Giannuzzi L, Vittone L, Andrinolo D, Mundiña-Weilenmann C (2012) Subchronic microcystin-LR exposure increased hepatic apoptosis and induced compensatory mechanisms in mice. *J Biochem Mol Toxicol* 26:131–138. <https://doi.org/10.1002/jbt.20419>
- Li G, Xie P, Fu J, Hao L, Xiong Q, Li H (2008) Microcystin-induced variations in transcription of GSTs in an omnivorous freshwater fish, goldfish. *Aquat Toxicol* 88:75–80. <https://doi.org/10.1016/j.aquatox.2008.03.007>
- Li D, Xie P, Zhang X, Zhao Y (2009) Intraperitoneal injection of extracted microcystins results in hypovolemia and hypotension in crucian carp (*Carassius auratus*). *Toxicol* 53:638–644. <https://doi.org/10.1016/j.toxicol.2009.01.027>
- Li G, Chen J, Xie P, Jiang Y, Wu L, Zhang X (2011) Protein expression profiling in the zebrafish (*Danio rerio*) embryos exposed to the microcystin-LR. *Proteomics* 11:2003–2018. <https://doi.org/10.1002/pmic.201000442>
- Li Y, Li J, Huang H, Yang M, Zhuang D, Cheng X, Zhang H, Fu X (2016) Microcystin-LR induces mitochondria-mediated apoptosis in human bronchial epithelial cells. *Exp Ther Med* 12:633–640. <https://doi.org/10.3892/etm.2016.3423>
- Li H, Wei X, Gu C, Su K, Wan H, Hu N, Wang P (2018) A dual functional cardiomyocyte-based hybrid-biosensor for the detection of diarrhetic shellfish poisoning and paralytic shellfish poisoning toxins. *Anal Sci* 34:893–900. <https://doi.org/10.2116/analsci.18P029>
- Li H, Gu X, Chen H, Mao Z, Zeng Q, Yang H, Kan K (2021) Comparative toxicological effects of planktonic *Microcystis* and benthic *Oscillatoria* on zebrafish embryonic development: Implications for cyanobacteria risk assessment. *Environ Pollut* 274:115852. <https://doi.org/10.1016/j.envpol.2020.115852>
- Liu Y, Song L, Li X, Liu T (2002) The toxic effects of microcystin-LR on embryo-larval and juvenile development of loach, *Misgurnus mizolepis* Gunther. *Toxicol* 40:395–399. [https://doi.org/10.1016/S0041-0101\(01\)00173-8](https://doi.org/10.1016/S0041-0101(01)00173-8)
- Lorenzen-Schmidt I, Clarke SB, Pyle WG (2016) The neglected messengers: control of cardiac myofilaments by protein phosphatases.

- J Mol Cell Cardiol 101:81–89. <https://doi.org/10.1016/j.yjmcc.2016.10.002>
- Lubbers ER, Mohler PJ (2016) Roles and regulation of protein phosphatase 2A (PP2A) in the heart. J Mol Cell Cardiol 101:127–133. <https://doi.org/10.1016/j.yjmcc.2016.11.003>
- Mackintosh C, Beattie KA, Klumpp S, Cohen P, Codd GA (1990) Cyanobacterial microcystin-LR is a potent and specific inhibitor of protein phosphatases 1 and 2A from both mammals and higher plants. FEBS Lett 264:187–192. [https://doi.org/10.1016/0014-5793\(90\)80245-e](https://doi.org/10.1016/0014-5793(90)80245-e)
- Mahdi A, Cortese-Krott MM, Kelm M, Li N, Pernow J (2021) Novel perspectives on redox signaling in red blood cells and platelets in cardiovascular disease. Free Radic Biol Med 168:95–109. <https://doi.org/10.1016/j.freeradbiomed.2021.03.020>
- Mahmood NA, Carmichael WW (1987) Anatoxin-a(s), an anticholinesterase from the cyanobacterium *Anabaena flos-aquae* NRC-525-17. Toxicol 25:1221–1227. [https://doi.org/10.1016/0041-0101\(87\)90140-1](https://doi.org/10.1016/0041-0101(87)90140-1)
- Martins ND, Colvara WA, Rantin FT, Kalinin AL (2011) Microcystin-LR: How it affects the cardio-respiratory responses to hypoxia in Nile tilapia, *Oreochromis niloticus*. Chemosphere 84:154–159. <https://doi.org/10.1016/j.chemosphere.2011.02.016>
- Martins ND, Yunes JS, McKenzie DJ, Rantin FT, Kalinin AL, Monteiro DA (2019) Microcystin-LR exposure causes cardiorespiratory impairments and tissue oxidative damage in trahira, *Hoplias malabaricus*. Ecotoxicol Environ Safety 173:436–443. <https://doi.org/10.1016/j.ecoenv.2019.02.053>
- Massey IY, Yang F, Ding Z, Yang S, Guo J, Tezi C, Al-Osman M, Kamegni RB, Zeng W (2018) Exposure routes and health effects of microcystins on animals and humans: a mini-review. Toxicol 151:156–162. <https://doi.org/10.1016/j.toxicol.2018.07.010>
- McLellan NL, Manderville RA (2017) Toxic mechanisms of microcystins in mammals. Toxicol Res (Camb) 6:391–405. <https://doi.org/10.1039/c7tx00043j>
- Mellor IR, Codd GA, Usherwood PNR, Petrov AG (1993) Nodularin, a cyclic pentameric peptide forms ion channels in lipid bilayers. Comptes Rendus De l'Academie Bulg Des Sci 46:53–55
- Meng X, Zhang L, Hou J, Ma T, Pan C, Zhou Y, Han R, Ding Y, Peng H, Xiang Z, Li D, Han X (2020) The mechanisms in the altered ontogenetic development and lung-related pathology in microcystin-leucine arginine (MC-LR)-paternal-exposed offspring mice. Sci Total Environ. <https://doi.org/10.1016/j.scitotenv.2020.139678>
- Merel S, Villarín MC, Chung K, Snyder S (2013) Spatial and thematic distribution of research on cyanotoxins. Toxicol 76:118–131. <https://doi.org/10.1016/j.toxicol.2013.09.008>
- Meriluoto J, Spoof L, Codd GA (eds) (2017) Handbook of Cyanobacterial Monitoring and Cyanotoxin Analysis. Wiley, Chichester
- Metcalfe JS, Bruno M (2017) Anatoxin-a(s). In: Meriluoto J, Spoof L, Codd GA (eds) Handbook of cyanobacterial monitoring and cyanotoxin analysis. Wiley, Chichester, pp 155–159
- Metcalfe JS, Codd GA (2012) Cyanotoxins. In: Whitton BA (ed) Ecology of Cyanobacteria II: their diversity in space and time. Wiley, Chichester (UK), pp 651–675
- Metcalfe JS, Codd GA (2020) Co-occurrence of cyanobacteria and cyanotoxins with other environmental health hazards: impacts and implications. Toxins 12:629. <https://doi.org/10.3390/toxins121100629>
- Miller MA, Kudela RM, Mekebrei A, Crane D, Oates SC, Tinker MT, Staedler M, Miller WA, Toy-Choutka S, Dominik C, Hardin D, Langlois G, Murray M, Ward K, Jessup DA (2010) Evidence for a novel marine harmful algal bloom: cyanotoxin (microcystin) transfer from land to sea otters. PLoS ONE 5:e12576. <https://doi.org/10.1371/journal.pone.0012576>
- Milutinović A, Zorc-Pleskovič R, Petrovič D, Zorc M, Šuput D (2006) Microcystin-LR induces alterations in heart muscle. Folia Biol (praha) 52:116–118
- Moore RE (1996) Cyclic peptides and depsipeptides from cyanobacteria: a review. J Ind Microbiol 16:134–143. <https://doi.org/10.1007/BF01570074>
- Moore RE (1984) Public health and toxins from marine blue-green algae. In: Ragelis EP (ed) Seafood toxins. ACS Symposium Series No. 262, American Chemical Society, Washington, pp 369–376
- Moreira C, Azevedo J, Antunes A, Vasconcelos V (2012) Cylindrospermopsin: occurrence, methods of detection and toxicology. J Appl Microbiol 114:605–620. <https://doi.org/10.1111/jam.12048>
- Nair AB, Jacob S (2016) A simple practice guide for dose conversion between animals and human. J Basic Clin Pharm 7:27–31. <https://doi.org/10.4103/0976-0105.177703>
- Navrátil S, Palíková M, Vajcová V (1998) The effect of pure microcystin LR and biomass of blue-green algae on blood indices of carp (*Cyprinus carpio* L.). Acta Vet Brno 67:273–279. <https://doi.org/10.2754/avb199867040273>
- Nicolaou P, Hajjar RJ, Kranias EG (2009) Role of protein phosphatase-1 inhibitor-1 in cardiac physiology and pathophysiology. J Mol Cell Cardiol 47:365–371. <https://doi.org/10.1016/j.yjmcc.2009.05.010>
- Nigam SK, Bush KT, Martovetsky G, Ahn SY, Liu HC, Richard E, Bhatnagar V, Wu W (2015) The organic anion transporter (OAT) family: a systems biology perspective. Physiol Rev 95:83–123. <https://doi.org/10.1152/physrev.00025.2013>
- Norris RLG, Seawright AA, Shaw GR, Smith MJ, Chiswell RK, Moore MR (2001) Distribution of ¹⁴C cylindrospermopsin in vivo in the mouse. Environ Toxicol 16:498–505. <https://doi.org/10.1002/tox.10008>
- Oberemm A, Fastner J, Steinberg CEW (1997) Effects of microcystin-LR and cyanobacterial crude extracts on embryo-larval development of zebrafish (*Danio rerio*). Water Res 31:2918–2921. [https://doi.org/10.1016/S0043-1354\(97\)00120-6](https://doi.org/10.1016/S0043-1354(97)00120-6)
- Oberemm A, Becker J, Codd GA, Steinberg C (1999) Effects of cyanobacterial toxins and aqueous crude extracts of cyanobacteria on the development of fish and amphibians. Environ Toxicol 14:77–88. [https://doi.org/10.1002/\(SICI\)1522-7278\(199902\)14:1%3c77::AID-TOX11%3e3.0.CO;2-F](https://doi.org/10.1002/(SICI)1522-7278(199902)14:1%3c77::AID-TOX11%3e3.0.CO;2-F)
- Ohtani I, Moore RE, Runnegar MTC (1992) Cylindrospermopsin: a potent hepatotoxin from the blue-green alga *Cylindrospermopsis raciborskii*. J Am Chem Soc 114:7941–7942. <https://doi.org/10.1021/ja00046a067>
- Oishi S, Watanabe MF (1986) Acute toxicity of *Microcystis aeruginosa* and its cardiovascular effects. Environ Res 40:518–524. [https://doi.org/10.1016/s0013-9351\(86\)80126-8](https://doi.org/10.1016/s0013-9351(86)80126-8)
- Orbach SM, Ehrlich MF, Rajagopalan P (2018) High-throughput toxicity of chemicals and mixtures in organotypic multi-cellular cultures of primary human hepatic cells. Toxicol in Vitro 51:83–94. <https://doi.org/10.1016/j.tiv.2018.05.006>
- Osborne NJT, Webb PM, Shaw GR (2001) The toxins of *Lyngbya majuscula* and their human and ecological health effects. Environ Int 27:381–392. [https://doi.org/10.1016/S0160-4120\(01\)00098-8](https://doi.org/10.1016/S0160-4120(01)00098-8)
- Palikova M, Ondrackova P, Mares J, Adamovsky O, Pikula J, Kohoutek J, Navratil S, Blaha L, Kopp R (2013) In vivo effects of microcystins and complex cyanobacterial biomass on rats (*Rattus norvegicus* var. *alba*): changes in immunological and haematological parameters. Toxicol 73:1–8. <https://doi.org/10.1016/j.toxicol.2013.06.016>
- Papadimitriou T, Armeni E, Stalikas CD, Kagalogou I, Leonardos ID (2012) Detection of microcystins in Pamvotis lake water and assessment of cyanobacterial bloom toxicity.

- Environ Monit Assess 184:3043–3052. <https://doi.org/10.1007/s10661-011-2169-5>
- Pašková V, Adamovský O, Pikula J, Skočovská B, Band'ouchová H, Horáková J, Babica P, Maršálek B, Hilscherová K (2008) Detoxification and oxidative stress responses along with microcystins accumulation in Japanese quail exposed to cyanobacterial biomass. *Sci Total Environ* 398:34–47. <https://doi.org/10.1016/j.scitotenv.2008.03.001>
- Paskova V, Paskerova H, Pikula J, Bandouchova H, Sedlackova J, Hilscherova K (2011) Combined exposure of Japanese quails to cyanotoxins, Newcastle virus and lead: oxidative stress responses. *Ecotoxicol Environ Saf* 74:2082–2090. <https://doi.org/10.1016/j.ecoenv.2011.07.014>
- Pernow J, Mahdi A, Yang J, Zhou Z (2019) Red blood cell dysfunction: a new player in cardiovascular disease. *Cardiovasc Res* 115:1596–1605. <https://doi.org/10.1093/cvr/cvz156>
- Petrov AG, Ramsey RL, Codd GA, Usherwood PNR (1991) Modeling mechano-sensitivity in membranes: effects of lateral tension on ionic pores in a microcystin toxin-containing membrane. *Eur Biophys J* 20:17–29. <https://doi.org/10.1007/BF00183276>
- Pichardo S, del Campo FF, Jos Á, Cameán AM, Uría-Ovando V, Ouahid Y (2008) Changes of superoxide dismutase in tilapia fish (*Oreochromis* sp.) exposed to extracts of microcystin-containing cyanobacteria. *Fresenius Environ Bull* 17:1511–1518
- Piyathilaka MAPC, Pathmalal MM, De Silva TKH, BGDNK, Samarakoon SR, Chanthirika S, (2015) Microcystin-LR-induced cytotoxicity and apoptosis in human embryonic kidney and human kidney adenocarcinoma cell lines. *Microbiology* 161:819–828. <https://doi.org/10.1099/mic.0.000046>
- Price LC, McCabe C, Garfield B, Wort SJ (2020) Thrombosis and COVID-19 pneumonia: the clot thickens! *Eur Respir J* 56:2001608. <https://doi.org/10.1183/13993003.01608-2020>
- Prieto AI, Jos A, Pichardo S, Moreno I, de Sotomayor MÁ, Moyano R, Blanco A, Cameán AM (2009) Time-dependent protective efficacy of Trolox (vitamin E analog) against microcystin-induced toxicity in tilapia (*Oreochromis niloticus*). *Environ Toxicol* 24:563–579. <https://doi.org/10.1002/tox.20458>
- Puerto M, Prieto AI, Jos A, Moreno I, Moyano R, Blanco A, Cameán AM (2010) Dietary N-acetylcysteine (NAC) prevents histopathological changes in tilapias (*Oreochromis niloticus*) exposed to a microcystin-producing cyanobacterial water bloom. *Aquaculture* 306:35–48. <https://doi.org/10.1016/j.aquaculture.2010.06.020>
- Puerto M, Jos A, Pichardo S, Moyano R, Blanco A, Cameán AM (2014) Acute exposure to pure cylindrospermopsin results in oxidative stress and pathological alterations in tilapia (*Oreochromis niloticus*). *Environ Toxicol* 29:371–385. <https://doi.org/10.1002/tox.21764>
- Qi M, Dang Y, Xu Q, Yu L, Liu C, Yuan Y, Wang J (2016) Microcystin-LR induced developmental toxicity and apoptosis in zebrafish (*Danio rerio*) larvae by activation of ER stress response. *Chemosphere* 157:166–173. <https://doi.org/10.1016/j.chemosphere.2016.05.038>
- Qiu T (2014) Biological species and environment study in microcystins causing apoptosis in heart. *Adv Mater Res* 886:341–344. <https://doi.org/10.4028/www.scientific.net/AMR.886.341>
- Qiu T, Xie P, Liu Y, Li G, Xiong Q, Hao L, Li H (2009) The profound effects of microcystin on cardiac antioxidant enzymes, mitochondrial function and cardiac toxicity in rat. *Toxicology* 257:86–94. <https://doi.org/10.1016/j.tox.2008.12.012>
- Råbergh CMI, Bylund G, Eriksson JE (1991) Histopathological effects of microcystin-LR, a cyclic peptide toxin from the cyanobacterium (blue-green alga) *Microcystis aeruginosa* on common carp (*Cyprinus carpio* L.). *Aquat Toxicol* 20:131–145. [https://doi.org/10.1016/0166-445X\(91\)90012-X](https://doi.org/10.1016/0166-445X(91)90012-X)
- Robinson CP, Franz DR, Bondura ME (1991) Effects of lyngbyatoxin A from the blue-green alga *Lyngbya majuscula* on rabbit aorta contractions. *Toxicol* 29:1009–1017. [https://doi.org/10.1016/0041-0101\(91\)90083-4](https://doi.org/10.1016/0041-0101(91)90083-4)
- Roth M, Obaidat A, Hagenbuch B (2012) OATPs, OATs and OCTs: the organic anion and cation transporters of the SLCO and SLC22A gene superfamilies. *Br J Pharmacol* 165:1260–1287. <https://doi.org/10.1111/j.1476-5381.2011.01724.x>
- Salabei JK, Asnake ZT, Ismail ZH, Charles K, Stanger GT, Abdullahi AH, Abraham AT, Okonoboh P (2022) COVID-19 and the cardiovascular system: an update. *Am J Med Sci* 364:139–147. <https://doi.org/10.1016/j.amjms.2022.01.022>
- Saraf SR, Frenkel A, Harke MJ, Jankowiak JG, Gobler CJ, McElroy AE (2018) Effects of *Microcystis* on development of early life stage Japanese medaka (*Oryzias latipes*): comparative toxicity of natural blooms, cultured *Microcystis* and microcystin-LR. *Aquat Toxicol* 194:18–26. <https://doi.org/10.1016/j.aquatox.2017.10.026>
- Seawright AA, Nolan CC, Shaw GR, Chiswell RK, Norris RL, Moore MR, Smith MJ (1999) The oral toxicity for mice of the tropical cyanobacterium *Cylindrospermopsis raciborskii* (Woloszynska). *Environ Toxicol* 14:135–142. [https://doi.org/10.1002/\(SICI\)1522-7278\(199902\)14:1%3c135::AID-TOX17%3e3.0.CO;2-L](https://doi.org/10.1002/(SICI)1522-7278(199902)14:1%3c135::AID-TOX17%3e3.0.CO;2-L)
- Selderslaghs IWT, Hooyberghs J, Blust R, Witters HE (2013) Assessment of the developmental neurotoxicity of compounds by measuring locomotor activity in zebrafish embryos and larvae. *Neurotoxicol Teratol* 37:44–56. <https://doi.org/10.1016/j.ntt.2013.01.003>
- Shahi N, Sahoo M, Mallik SM, Sarma D, Das P (2012) The microcystins-induced DNA damage in the liver and the heart of zebrafish, *Danio rerio*. *Toxicol Environ Chem* 94:340–349. <https://doi.org/10.1080/0272248.2011.646111>
- Shen C, Zuo Z (2020) Zebrafish (*Danio rerio*) as an excellent vertebrate model for the development, reproductive, cardiovascular, and neural and ocular development toxicity study of hazardous chemicals. *Environ Sci Pollut Res Int* 27:43599–43614. <https://doi.org/10.1007/s11356-020-10800-5>
- Shi J, Zhou J, Zhang M (2015) Microcystins induce vascular inflammation in human umbilical vein endothelial cells via activation of NF-κB. *Mediat Inflamm* 2015:942159. <https://doi.org/10.1155/2015/942159>
- Shi J, Deng H, Pan H, Xu Y, Zhang M (2017) Epigallocatechin-3-gallate attenuates microcystin-LR induced oxidative stress and inflammation in human umbilical vein endothelial cells. *Chemosphere* 168:25–31. <https://doi.org/10.1016/j.chemosphere.2016.10.037>
- Shi J, Zhang M, Zhang L, Deng H (2018) Epigallocatechin-3-gallate attenuates microcystin-LR-induced apoptosis in human umbilical vein endothelial cells through activation of the NRF2/HO-1 pathway. *Environ Pollut* 239:466–472. <https://doi.org/10.1016/j.envpol.2018.04.038>
- Sicińska P, Bukowska B, Michałowicz J, Duda W (2006) Damage of cell membrane and antioxidative system in human erythrocytes incubated with microcystin-LR *in vitro*. *Toxicol* 47:387–397. <https://doi.org/10.1016/j.toxicol.2005.12.006>
- Sirén AL, Feuerstein G (1990) Cardiovascular effects of anatoxin-A in the conscious rat. *Toxicol Appl Pharmacol* 102:91–100. [https://doi.org/10.1016/0041-008X\(90\)90086-A](https://doi.org/10.1016/0041-008X(90)90086-A)
- Sivonen K, Jones G (1999) Cyanobacterial toxins. In: Chorus I, Bartram J (eds) *Toxic cyanobacteria in water: a guide to their public health consequences, monitoring, and management*. E&FN Spon, London, pp 41–111
- Stevens DK, Krieger RI (1991) Stability studies on the cyanobacterial nicotinic alkaloid anatoxin-A. *Toxin* 29:167–179. [https://doi.org/10.1016/0041-0101\(91\)90101-v](https://doi.org/10.1016/0041-0101(91)90101-v)

- Stotts RR, Twardock AR, Koritz GD, Haschek WM, Manuel RK, Hollis WB, Beasley VR (1997) Toxicokinetics of tritiated dihydro-microcystin-LR in swine. *Toxicol* 35:455–465. [https://doi.org/10.1016/S0041-0101\(96\)00120-1](https://doi.org/10.1016/S0041-0101(96)00120-1)
- Su Z, Sheets M, Ishida H, Li F, Barry WH (2004) Saxitoxin blocks L-type I_{Ca} . *J Pharmacol Exp Ther* 308:324–329. <https://doi.org/10.1124/jpet.103.056564>
- Šuput D, Zorc-Plesković R, Petrović D, Milutinović A (2010) Cardio-toxic injury caused by chronic administration of microcystin-YR. *Folia Biol (Praha)* 56:14–18
- Svirčev Z, Baltić V, Gantar M, Juković M, Stojanović D, Baltić M (2010) Molecular aspects of microcystin-induced hepatotoxicity and hepatocarcinogenesis. *J Environ Sci Health Part C Environ Carcinog Ecotoxicol Rev* 28:39–59. <https://doi.org/10.1080/10590500903585382>
- Svirčev Z, Drobac D, Tokodi N, Vidović M, Simeunović J, Miladinov-Mikov M, Baltić V (2013) Epidemiology of primary liver cancer in Serbia and possible connection with cyanobacterial blooms. *J Environ Sci Health Part C Environ Carcinog Ecotoxicol Rev* 31:181–200. <https://doi.org/10.1080/10590501.2013.824187>
- Svirčev Z, Drobac D, Tokodi N, Lužanin Z, Munjas AM, Nikolin B, Vuleta D, Meriluoto J (2014) Epidemiology of cancers in Serbia and possible connection with cyanobacterial blooms. *J Environ Sci Health Part C Environ Carcinog Ecotoxicol Rev* 32:319–337. <https://doi.org/10.1080/10590501.2014.967053>
- Svirčev Z, Lalić D, Bojadžija Savić G, Tokodi N, Drobac Backović D, Chen L, Meriluoto J, Codd GA (2019) Global geographical and historical overview of cyanotoxin distribution and cyanobacterial poisonings. *Arch Toxicol* 93:2429–2481. <https://doi.org/10.1007/s00204-019-02524-4>
- Swindle MM, Makin A, Herron AJ, Clubb FJ Jr, Frazier KS (2012) Swine as models in biomedical research and toxicology testing. *Vet Pathol* 49:344–356. <https://doi.org/10.1177/0300985811402846>
- Tencalla F, Dietrich D (1997) Biochemical characterization of microcystin toxicity in rainbow trout (*Oncorhynchus mykiss*). *Toxicol* 35:583–595. [https://doi.org/10.1016/s0041-0101\(96\)00153-5](https://doi.org/10.1016/s0041-0101(96)00153-5)
- Terao K, Ohmori S, Igarashi K, Ohtani I, Watanabe MF, Harada KI, Ito E, Watanabe M (1994) Electron microscopic studies on experimental poisoning in mice induced by cylindrospermopsin isolated from blue-green alga *Umezakia natans*. *Toxicol* 32:833–843. [https://doi.org/10.1016/0041-0101\(94\)90008-6](https://doi.org/10.1016/0041-0101(94)90008-6)
- Testai E, Buratti FM, Funari E, Manganelli M, Vichi S, Arnich N, Biré R, Fessard V, Sialehaamo A (2016a) Review and analysis of occurrence, exposure and toxicity of cyanobacteria toxins in food. EFSA. <https://doi.org/10.2903/sp.efsa.2016.EN-998>
- Testai E, Scardala S, Vichi S, Buratti FM, Funari E (2016b) Risk to human health associated with the environmental occurrence of cyanobacterial neurotoxic alkaloids anatoxins and saxitoxins. *Crit Rev Toxicol* 46:385–419. <https://doi.org/10.3109/10408444.2015.1137865>
- Theiss WC, Carmichael WW, Wyman J, Bruner R (1988) Blood pressure and hepatocellular effects of the cyclic heptapeptide toxin produced by the freshwater cyanobacterium (blue-green alga) *Microcystis aeruginosa* strain PCC-7820. *Toxicol* 26:603–613. [https://doi.org/10.1016/0041-0101\(88\)90243-7](https://doi.org/10.1016/0041-0101(88)90243-7)
- Turner PC, Gammie AJ, Hollinrake K, Codd GA (1990) Pneumonia associated with contact with cyanobacteria. *BMJ* 300:1440–1441. <https://doi.org/10.1136/bmj.300.6737.1440>
- Ueno Y, Nagata S, Tsutsumi T, Hasegawa A, Watanabe MF, Park HD, Chen GC, Chen G, Yu SZ (1996) Detection of microcystins, a blue-green algal hepatotoxin, in drinking water sampled in Haimen and Fusui, endemic areas of primary liver cancer in China, by highly sensitive immunoassay. *Carcinogenesis* 17:1317–1321. <https://doi.org/10.1093/carcin/17.6.1317>
- Ufelmann H, Schrenk D (2015) Nodularin-triggered apoptosis and hyperphosphorylation of signaling proteins in cultured rat hepatocytes. *Toxicol in Vitro* 29:16–26. <https://doi.org/10.1016/j.tiv.2014.08.008>
- Valério E, Vasconcelos V, Campos A (2016) New insights on the mode of action of microcystins in animal cells - a review. *Mini Rev Med Chem* 16:1032–1041. <https://doi.org/10.2174/1389557516666160219130553>
- van Apeldoorn ME, van Egmond HP, Speijers GJA, Bakker GJI (2007) Toxins of cyanobacteria. *Mol Nutr Food Res* 51:7–60. <https://doi.org/10.1002/mnfr.200600185>
- Vehovszky A, Kovács AW, Szabó H, Györi J, Farkas A (2012) Neurotoxic effects evoked by cyanobacterial extracts suggest multiple receptors involved in electrophysiological responses of molluscan (CNS, heart) models. *Acta Biol Hung* 63:160–170. <https://doi.org/10.1556/abiol.63.2012.suppl.2.21>
- Vesterkvist PSM, Meriluoto JAO (2003) Interaction between microcystins of different hydrophobicities and lipid monolayers. *Toxicol* 41:349–355. [https://doi.org/10.1016/S0041-0101\(02\)00315-X](https://doi.org/10.1016/S0041-0101(02)00315-X)
- Vesterkvist PSM, Misiorek JO, Spoo LEM, Toivola DM, Meriluoto JAO (2012) Comparative cellular toxicity of hydrophilic and hydrophobic microcystins on Caco-2 cells. *Toxins* 4:1008–1023. <https://doi.org/10.3390/toxins4111008>
- Vidal F, Sedan D, D'Agostino D, Cavalieri ML, Mullen E, Parot Varela MM, Flores C, Caixach J, Andrinolo D (2017) Recreational exposure during algal bloom in Carrasco beach, Uruguay: a liver failure case report. *Toxins* 9:267. <https://doi.org/10.3390/toxin9090267>
- Wang J, Salata JJ, Bennett PB (2003) Saxitoxin is a gating modifier of HERG K⁺ channels. *J Gen Physiol* 121:583–598. <https://doi.org/10.1085/jgp.200308812>
- Wang Q, Xie P, Chen J, Liang G (2008) Distribution of microcystins in various organs (heart, liver, intestine, gonad, brain, kidney and lung) of Wistar rat via intravenous injection. *Toxicol* 52:721–727. <https://doi.org/10.1016/j.toxicol.2008.08.004>
- Wang Q, Xiao G, Chen G, Du H, Wang L, Guo D, Hu T (2018) Toxic effect of microcystin-LR on blood vessel development. *Toxicol Environ Chem* 100:737–752. <https://doi.org/10.1080/02772248.2019.1578963>
- Wang Q, Liu Y, Guo J, Lin S, Wang Y, Yin T, Gregersen H, Hu T, Wang G (2019) Microcystin-LR induces angiodysplasia and vascular dysfunction through promoting cell apoptosis by the mitochondrial signaling pathway. *Chemosphere* 218:438–448. <https://doi.org/10.1016/j.chemosphere.2018.11.019>
- Wang L, Chen G, Xiao G, Han L, Wang Q, Hu T (2020a) Cylindrospermopsin induces abnormal vascular development through impairing cytoskeleton and promoting vascular endothelial cell apoptosis by the Rho/ROCK signaling pathway. *Environ Res* 183:109236. <https://doi.org/10.1016/j.envres.2020.109236>
- Wang L, Wang Q, Xiao G, Chen G, Han L, Hu T (2020b) Adverse effect of cylindrospermopsin on embryonic development in zebrafish (*Danio rerio*). *Chemosphere* 241:125060. <https://doi.org/10.1016/j.chemosphere.2019.125060>
- Wang H, Xu C, Liu Y, Jeppesen E, Svenning JC, Wu J, Zhang W, Zhou T, Wang P, Nangombe S, Ma J, Duan H, Fang J, Xie P (2021a) From unusual suspect to serial killer: cyanotoxins boosted by climate change may jeopardize megafauna. *Innovation* 2:100092. <https://doi.org/10.1016/j.xinn.2021.100092>
- Wang Q, Chen G, Zhang Q, Wang M, Wang G, Hu T (2021b) Microcystin-leucine arginine blocks vasculogenesis and angiogenesis through impairing cytoskeleton and impeding endothelial cell migration by downregulating integrin-mediated Rho/ROCK signaling pathway. *Environ Sci Pollut Res Int* 28:67108–67119. <https://doi.org/10.1007/s11356-021-15337-9>

- Ward CJ, Codd GA (1999) Comparative toxicity of four microcystins of different hydrophobicities to the protozoan, *Tetrahymena pyriformis*. *J Appl Microbiol* 86:874–882. <https://doi.org/10.1046/j.1365-2672.1999.00771.x>
- Whitton BA, Potts M (2012) Ecology of cyanobacteria II: their diversity in space and time. Springer, London
- Wiberg GS, Stephenson NR (1960) Toxicologic studies on paralytic shellfish poison. *Toxicol Appl Pharmacol* 2:607–615. [https://doi.org/10.1016/0041-008x\(60\)90078-8](https://doi.org/10.1016/0041-008x(60)90078-8)
- World Health Organization. Division of Operational Support in Environmental Health (1998) Guidelines for drinking-water quality. Vol. 2, Health criteria and other supporting information: addendum, 2nd ed. World Health Organization, Geneva
- Wu Q, Yan W, Liu C, Li L, Yu L, Zhao S, Li G (2016) Microcystin-LR exposure induces developmental neurotoxicity in zebrafish embryo. *Environ Pollut* 213:793–800. <https://doi.org/10.1016/j.envpol.2016.03.048>
- Wu Q, Yan W, Cheng H, Liu C, Hung TC, Guo X, Li G (2017) Parental transfer of microcystin-LR induced transgenerational effects of developmental neurotoxicity in zebrafish offspring. *Environ Pollut* 231:471–478. <https://doi.org/10.1016/j.envpol.2017.08.038>
- Xie L, Yan W, Li J, Yu L, Wang J, Li G, Chen N, Steinman AD (2015) Microcystin-RR exposure results in growth impairment by disrupting thyroid endocrine in zebrafish larvae. *Aquat Toxicol* 164:16–22. <https://doi.org/10.1016/j.aquatox.2015.04.01>
- Xie Y, Xu E, Bowe B, Al-Aly Z (2022) Long-term cardiovascular outcomes of COVID-19. *Nat Med* 28:583–590. <https://doi.org/10.1038/s41591-022-01689-3>
- Xu Y, Wang X, Jiang S, Men C, Xu D, Guo Y, Wu J (2018) Microcystin-LR regulates circadian clock and antioxidant gene expression in cultured rat cardiomyocytes. *Cell Mol Biol Lett* 23:50. <https://doi.org/10.1186/s11658-018-0115-z>
- Yadav S, Sinha RP, Tyagi MB, Kumar A (2011) Cyanobacterial secondary metabolites. *Int J Pharma Bio Sci* 2:144–167
- Yang F, Wen C, Zheng S, Yang S, Chen J, Feng X (2018) Involvement of MAPK/ERK1/2 pathway in microcystin-induced microfilament reorganization in HL7702 hepatocytes. *J Toxicol Environ Health Part A* 81:1135–1141. <https://doi.org/10.1080/15287394.2018.1532715>
- Yang Y, Yu G, Chen Y, Jia N, Li R (2020) Four decades of progress in cylindrospermopsin research: the ins and outs of a potent cyanotoxin. *J Hazard Mater* 406:124653. <https://doi.org/10.1016/j.jhazmat.2020.124653>
- Young FM, Thomson C, Metcalf JS, Lucocq JM, Codd GA (2005) Immunogold localisation of microcystins in cryosectioned cells of *Microcystis*. *J Struct Biol* 151:208–214. <https://doi.org/10.1016/j.jsb.2005.05.007>
- Yu SZ (1995) Primary prevention of hepatocellular carcinoma. *J Gastroenterol Hepatol* 10:674–682. <https://doi.org/10.1111/j.1440-1746.1995.tb01370.x>
- Žegura B (2016) An overview of the mechanisms of microcystin-LR genotoxicity and potential carcinogenicity. *Mini Rev Med Chem* 16:1042–1062. <https://doi.org/10.2174/1389557516666160308141549>
- Žegura B, Gajski G, Štraser A, Garaj-Vrhovac V, Filipič M (2011a) Microcystin-LR induced DNA damage in human peripheral blood lymphocytes. *Mutat Res* 726:116–122. <https://doi.org/10.1016/j.mrgentox.2011.10.002>
- Žegura B, Štraser A, Filipič M (2011b) Genotoxicity and potential carcinogenicity of cyanobacterial toxins—a review. *Mutat Res* 727:16–41. <https://doi.org/10.1016/j.mrrev.2011.01.002>
- Zeng C, Sun H, Xie P, Wang J, Zhang G, Chen N, Yan W, Li G (2014) The role of apoptosis in MCLR-induced developmental toxicity in zebrafish embryos. *Aquat Toxicol* 149:25–32. <https://doi.org/10.1016/j.aquatox.2014.01.021>
- Zhang X, Xie P, Li D, Shi Z (2007) Hematological and plasma biochemical responses of crucian carp (*Carassius auratus*) to intraperitoneal injection of extracted microcystins with the possible mechanisms of anemia. *Toxicol* 49:1150–1157. <https://doi.org/10.1016/j.toxicol.2007.02.009>
- Zhang H, Shao D, Wu Y, Cai C, Hu C, Shou X, Dai B, Ye B, Wang M, Jia X (2012) Apoptotic responses of *Carassius auratus* lymphocytes to nodularin exposure in vitro. *Fish Shellfish Immunol* 33:1229–1237. <https://doi.org/10.1016/j.fsi.2012.08.016>
- Zhang H, Shao D, Wu Y, Dai B, Cai C, Fang W, Ye B, Zhang Y, Liu J, Jia X (2013) Regulation of nodularin-induced apoptosis by epigallocatechin-3-gallate on fish lymphocytes in vitro. *Fish Shellfish Immunol* 34:1085–1093. <https://doi.org/10.1016/j.fsi.2013.01.012>
- Zhang Y, Zhuang H, Yang H, Xue W, Wang L, Wei W (2019) Microcystin-LR disturbs testicular development of giant freshwater prawn *Macrobrachium rosenbergii*. *Chemosphere* 222:584–592. <https://doi.org/10.1016/j.chemosphere.2019.01.146>
- Zhao Y, Xie P, Tang R, Zhang X, Li L, Li D (2008) In vivo studies on the toxic effects of microcystins on mitochondrial electron transport chain and ion regulation in liver and heart of rabbit. *Comp Biochem Physiol Part C Toxicol Pharmacol* 148:204–210. <https://doi.org/10.1016/j.cbpc.2008.05.008>
- Zhao S, Xu J, Zhang W, Yan W, Li G (2021) Paternal exposure to microcystin-LR triggers developmental neurotoxicity in zebrafish offspring via an epigenetic mechanism involving MAPK pathway. *Sci Total Environ* 792:148437. <https://doi.org/10.1016/j.scitotenv.2021.148437>
- Zhou L, Yu H, Chen K (2002) Relationship between microcystin in drinking water and colorectal cancer. *Biomed Environ Sci* 15:166–171
- Zhou W, Liang H, Zhang X (2012) Erythrocyte damage of crucian carp (*Carassius auratus*) caused by microcystin-LR: in vitro study. *Fish Physiol Biochem* 38:849–858. <https://doi.org/10.1007/s10695-011-9572-2>
- Zi J, Pan X, MacIsaac HJ, Yang J, Xu R, Chen S, Chang X (2018) Cyanobacteria blooms induce embryonic heart failure in an endangered fish species. *Aquat Toxicol* 194:78–85. <https://doi.org/10.1016/j.aquatox.2017.11.007>
- Zuo J, Huo T, Du X, Yang Q, Wu Q, Shen J, Liu C, Hung TC, Yan W, Li G (2021) The joint effect of parental exposure to microcystin-LR and polystyrene nanoplastics on the growth of zebrafish offspring. *J Hazard Mater* 410:124677. <https://doi.org/10.1016/j.jhazmat.2020.124677>

Publisher's Note Springer Nature remains neutral with regard to jurisdictional claims in published maps and institutional affiliations.

Springer Nature or its licensor holds exclusive rights to this article under a publishing agreement with the author(s) or other rightsholder(s); author self-archiving of the accepted manuscript version of this article is solely governed by the terms of such publishing agreement and applicable law.