



Feasibility investigation of direct laser cutting process of metal foam with high pore density

Yangxu Liu¹ · Wei Zhou¹ · Xuyang Chu¹ · Shaoyu Liu¹ · Kwan San Hui²

Received: 22 November 2017 / Accepted: 12 February 2018 / Published online: 24 February 2018
© Springer-Verlag London Ltd., part of Springer Nature 2018

Abstract

To avoid damage to the pore structure of metal foam, a laser cutting process for efficiently and directly cutting metal foam into regular shapes is proposed. After analyzing the proposed laser cutting process, its effects when applied to three different types of metal material (copper, ferroalloy, and nickel) and two levels of pore density, namely 90 and 110 pores per inch (PPI), were investigated. The results show that metal foam with a good surface quality can be obtained without damaging the pore structure by using the proposed laser cutting process. Of the three metal types considered, the highest material removal rate (MRR) and material oxidation rate (MOR) were observed for ferroalloy foam. Of the two pore densities, metal foam of 90 PPI showed a larger material removal rate than metal foam of 110 PPI. The MRR and MOR increased with an increase in the laser output power and decrease in the scanning speed. Using a central composite experimental design method, optimized processing parameters of 26 W laser output power and 475 mm/s scanning speed were adopted to cut the metal foam with a high pore density.

Keywords Metal foam · Laser cutting · Material removal rate · Material oxidation rate

1 Introduction

During the last three decades, different types of metal foam with a high pore density and three-dimensional pore structure have been developed using different manufacturing methods. The many outstanding properties of metal foam, such as its low density, high gas permeability, high specific surface area, good energy absorption characteristics, and high thermal conductivity, make it an attractive material for use in various industrial applications. Some types of metal foam, including copper foam, ferroalloy foam, nickel foam, and aluminum foam, are fabricated at a large scale with different characteristics. For example, copper foam has high thermal conductivity, which can be used as a thermally conductive material [1]. Ferroalloy foam has a high impact resistance and good energy absorbing characteristics and has been used in the transportation industry as a damping

material [2]. Nickel foam has good electromagnetic shielding properties and has been used as an electromagnetic shielding material [3]. These metal foam types are considered preferred materials for catalyst supports because their highly specific surface area provides more opportunities for contact with gas or liquids as catalysts in a microreactor. Microreactors with metal foam as a catalyst support have also been studied, such as in the steam reforming of methanol [4], mass-transfer characterization, and catalyst loading method [5, 6]. In addition, metal foam can be used as a type of bio-material, and its various 3D porous surfaces or structures that are able to be created can enhance the biological fixation on orthopedic implants [7].

Based on the pore structure, metal foam can be divided into two types: closed-cell [8] and open-cell [9] types. For closed-cell metal foam, the pores are not connected to each other. However, each pore is connected with each other in open-cell metal foam. The typical porosity of metal foam with an open cell ranges from 80 to 90%. Furthermore, the cell size of metal foam is commonly given in pores per linear inch (PPI), which are typically used to characterize the porosity [10]. Metal foam have been developed using different manufacturing methods, the most common of which is a foaming method [11]. Other fabrication methods of metal foam are also used, including the metallurgy process [12, 13], deposition [14], and permeation [15]. A large number of studies have been

✉ Wei Zhou
weizhou@xmu.edu.cn

¹ Department of Mechanical and Electrical Engineering, Xiamen University, Xiamen 361005, China

² School of Mathematics, University of East Anglia, Norwich NR4 7TJ, UK

conducted on the development and establishment of fabrication processes to produce metal foam at low cost. However, owing to its wide range of applications, extensive requirements for metal foam with a regular shape and accurate size are necessary. The greatest challenge to generating metal foam is the follow-up process used to control the cell structure. A traditional cutting method can cause a pore collapse, plastic deformation, and/or interface stripping, which limit a high degree of freedom in the engineering design and prospective application of the metal foam [16].

Recently, there have been a few studies focusing on electrical discharge machining (EDM) for the cutting of metal foam. For example, Scott et al. [17] used EDM to cut both Fe-Cr-Al alloy foam and 316 stainless steel foam and investigated the effects of the feeding speed and spark on-time ratio on the material removal rate (MRR). Their results show that the MRR is positively correlated with the feed speed and discharge duration and is inversely related to the discharge cycle. Alexander et al. [18] investigated the influence of the mesostructured parameters of aluminum foam on the EDM process. The results show that very fast feed speeds can be achieved through good flushing conditions and a low relative density of the material. Extensive experiments using EDM were conducted on solid stainless steel and porous stainless steel with different pore sizes [19]. MRR and the tool wear ratio were used to evaluate the machining performance of micro-EDM. The relationship between the pore size and machining performance of EDM was revealed experimentally and through a numerical analysis. In summary, we found that EDM can effectively cut metal foam without causing a collapse or fracture of the pore structure and can reduce the surface roughness by adjusting the processing parameters. However, the cutting speed of EDM is relatively slow and the cost is quite high. Moreover, a cooling liquid should be added for the machining process of EDM, in which the pores are easily blocked with residual impurities, which are difficult to clean.

From the above research results, we can see that a new cutting technology for metal foam urgently needs to be developed to meet the demands of different applications. In this study, a new direct laser cutting technology is proposed to rapidly cut metal foam of different materials and PPI. The direct laser cutting mechanism for metal foam is analyzed, and the effects of the laser processing parameters such as the laser output power and scanning speed on the MRR and the material oxidation rate (MOR) are further discussed. Finally, a central composite design (CCD) experiment conducted to optimize the laser processing parameters is described.

2 Experimental methods and devices

Two levels of experiments were conducted to study the direct laser cutting process of metal foam: a single factor experiment

and an experiment based on the CCD method. The influences of the laser output power and scanning speed on the MRR and MOR were investigated using a single factor experiment. The optimized laser processing parameters for metal foam were obtained using CCD.

Single factor experiment The specific processing and testing process of metal foam are as follows: first, the metal foam was completely cut using a laser, and a series of rectangular metal foam shapes were obtained with a size of 30 mm × 15 mm × 3 mm. The topography of the cutting section of the metal foam was analyzed using a scanning electron microscope (SEM), and compared to traditional machining (milling process using a lathe). Second, three processing times (5, 10, and 15 s) were preset for the different metal foam. Using various laser cutting parameters, different kerfs were fabricated on the surface of the metal foam. The depths of the kerfs were then measured to calculate the MRR of the metal foam. Finally, the cutting sections of the metal foam were analyzed using energy dispersive spectroscopy (EDS) to determine the MOR. A schematic of the cutting and detection process of metal foam is shown in Fig. 1. Using the same laser cutting parameters, the average oxygen mole ratio of three regions of the metal foam was considered as the MOR. In this paper, the MRR is defined as the processing depth of the kerfs per unit of time, which can be used to estimate the cut-off time of the metal foam. The MOR is defined as the difference in oxygen mole ratio before and after processing, which can be calculated through the following equations:

$$R_M = \frac{D}{T} \quad (1)$$

$$R_o = C_a - C_b \quad (2)$$

where D is the depth of the kerf, T is the laser processing time, and C_a and C_b are the oxygen mole ratios of foam metal after and before the laser processing, respectively.

Laser processing devices The system is composed of a fiber laser, scanning galvanometer, focusing lens, computer-controlled system, power equipment, and worktable. In this study, a prototype pulsed fiber laser (IPG, No. YLP-1-100-20-20-CN, Germany) was used as the fabrication laser. The laser was set to produce 100 ns pulses with a 1064 nm central emission wavelength at a repetition rate of 20 kHz. The specifications of the characteristic parameters of the fiber laser system used are given in Table 1. The pulse energy (E_{pulse}) and peak power (P_{peak}) can be calculated as [20]

$$E_{\text{pulse}} = \frac{P_{\text{average}}}{F_{\text{repetition}}} \quad (3)$$

$$P_{\text{peak}} = \frac{P_{\text{average}}}{F_{\text{repetition}} T_{\text{duration}}} \quad (4)$$

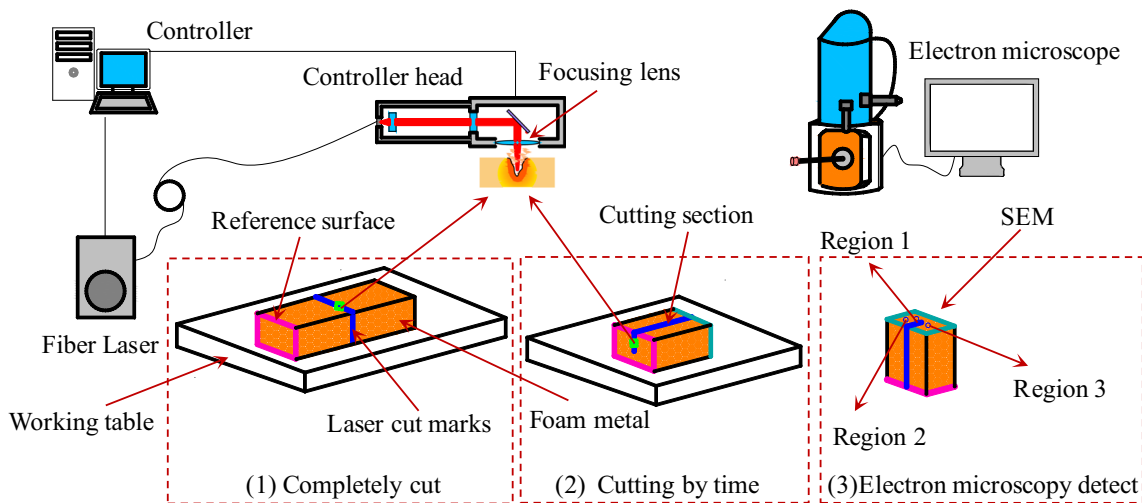


Fig. 1 Schematic of cutting and detection process of metal foam

where $P_{average}$ is the output power given by the laser source at a fixed frequency, $F_{repetition}$ is the repetition rate, and $T_{duration}$ is the pulse duration.

Metal foam as a processed material was fixed to the worktable, and a linear motor was used to move the laser head in the z-direction, allowing the laser beam to be focused on the surface of the sample materials by setting the focal length. Metal foam materials with 3 mm thickness and two different PPI (90 and 110) were used, namely, copper foam, ferroalloy foam, and nickel foam, the specific chemical compositions of which are shown in Table 2. The preset width of the cut was 0.01 mm, and an optical image of the direct laser cutting process is shown in Fig. 2.

Central composite experiment design The scanning speed and laser output power are independent variables, and the MRR and MOR are the targets. Regression equations can be established through the CCD to obtain the optimal parameters. The control factors and their levels are listed in Table 3. These experiments can be divided into three types: two level

Table 1 Specifications of characteristic parameters of the fiber laser system applied [21]

Characteristic	Parameter range	Process conditions	Unit
Wavelength	1055–1070	1064	nm
Beam quality (M^2)	< 1.1	1	/
Incident beam diameter	6–9	7	mm
Focused diameter	24.3–37.3	31.5	um
Laser output power	0–30	20–30	W
Scanning speed	0–1000	200–800	mm/s
Repetition rate	20–200	20	KHz
Nominal average output power	19–21	20	W
Pulse duration	90–120	100	ns

experiments of the axial points (black circle), experiments of asterisk (black star), and zero horizontal experiments of the center (white circle), as shown in Fig. 3.

3 Results and discussion

3.1 Laser cutting process of metal foam

A schematic of the laser cutting process of metal foam is shown in Fig. 4. The laser cutting process of metal foam has the following three stages. In the initial stage of the cutting process, when the laser starts to radiate the surface of the metal foam, the majority of laser energy is absorbed by the foam. Later, the surface temperature of the metal foam increases quickly but the walls are not molten or gasified. As time goes on, the temperature reaches the melting point of the metal foam, and the walls of the metal foam begin to melt. A molten pool is formed in the area radiated by the laser. When the laser radiation period is further increased, the surfaces of the metal foam are gasified and plasma of a higher ionization is formed. The removal capability is greatly enhanced. In this way, the surface of the metal foam is successfully cut, as shown in Fig. 4a. During the middle stage of the cutting process, with an increasing depth of the kerf, the removal efficiency is decreased because of the shielding of the laser beam. However, metal foam made using a foaming method has a porous structure, low density, impurities, and a rough surface. These

Table 2 Pore size and chemical composition of foam metals

Materials	Pore size (mm)	Chemical compositions (molar ratio)
Copper foam	0.2–0.4	Cu: 86.93% O: 4.74% C: 8.32%
ferroalloy foam	0.2–0.4	Fe: 84.35% O: 2.87% C: 12.78%
nickel foam	0.2–0.4	Ni: 87.25% O: 3.17% C: 9.58%

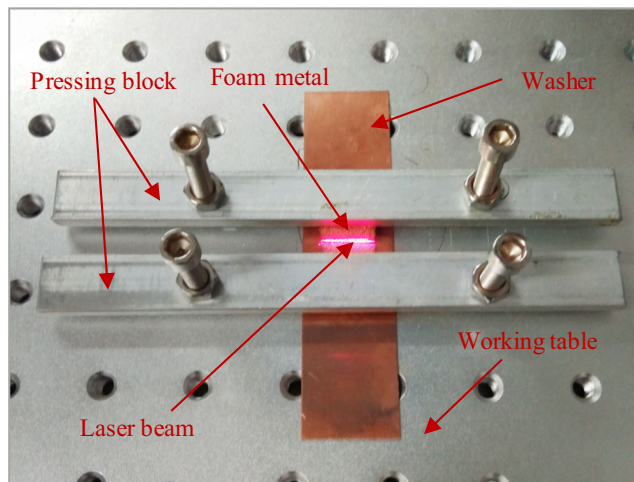


Fig. 2 Optical image of laser direct cutting process of metal foam

characteristics give the metal foam a stronger laser absorption rate [22] and transmittance [23] than solid metal. Consistent with solid metal, the kerf surface of metal foam is affected by the laser cutting process, which is mainly reflected in the pits, wave stripes, and falling particles on the surface of the kerf [24, 25], as shown in Fig. 4b. As the processing continues, the metal foam can be cut off during the final stage of the cutting process, as shown in Fig. 4c. A kerf with a trapezoid shape can be obtained.

The SEM images of the kerf of metal foam using the proposed laser cutting process are shown in Fig. 5. Two fracture forms were found during the laser cutting process of metal foam. In one, the laser irradiates the wall of a single pore cell, destroying the cell; however, this does not affect the structure of the remaining pore cells, as shown in Fig. 5a. In the other, the laser irradiates the middle walls of two pore cells. A kerf is created on the wall between the two pore cells and does not affect the other walls of the pore cells, ensuring the integrity of the pores, as shown in Fig. 5c. A kerf with a trapezoid shape can be observed in Fig. 5d. Furthermore, the width of the kerf is 24.5 μm , which is wider than the preset width. This can be attributed to the laser with high energy causing a thermal expansion of the metal foam. In addition, metal foam has a low density, with a structure that is not as tight as solid metal, and it is therefore more likely to burst when heated [26]. From Fig. 5e, some tiny holes appear on the kerf surface of the metal foam. The reason for this may be attributed to the metal foam being made from foam technology and certain impurities.

Table 3 Parameters of central composite experimental design

Symbols	Factors	Level 1	Level 2
P	Laser output power	20 w	30 w
S	Scanning speed	200 mm/s	800 mm/s

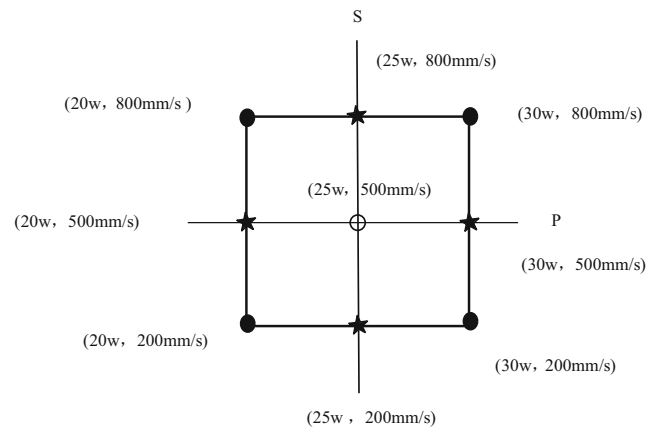


Fig. 3 Schematic of the central composite experimental design

Bubbles are created through a physicochemical reaction of these impurities during the laser cutting process [27].

3.2 Cutting sections and appearance of metal foams

SEM images of cut sections of metal foam using different methods are shown in Fig. 6. From Fig. 6a, the unprocessed metal foam exhibits a clear porous structure with a uniform distribution. The pore cells have a variety of shapes that are dominated by polygons [28]. A section cut using traditional machining is shown in Fig. 6b. When the tool is fed from the upper surface to the bottom surface of the metal foam, the walls of the pore cells easily bend or break, and pore structures are destroyed owing to the mechanical stress of the tool. Next, when the cutting tool approaches the worktable, the pore cell walls and pore structure of the metal foam are collapsed and glued together, blocking the pores. With the laser cutting process, the pore shape maintains the original polygon and the structure is nearly unchanged. The difference is that there are some smooth sections on the laser cut surface of the cell walls, as shown in Fig. 6c–e.

Figure 7 shows SEM images of the cutting depths of copper foam cut with different laser output powers of 20, 25, and 30, a scanning speed of 500 mm/s, and a pulse frequency of 20 kHz. It was found that the cutting depth and kerf width increase with the increase in laser output power. Figure 8 shows SEM images of the cutting depths, which vary with the scanning speed, using a 30 W laser output power and a pulse frequency of 20 kHz. The cutting depth and kerf width were increased with the decrease in the scanning speed. This is attributed to the increase in the cutting time used to enhance the material removability with a lower scanning speed. Meanwhile, the longer stay time of the thermal and the influence of thermal region can lead to a more obvious increase in the kerf width [29].

The various appearances of copper foam cut using different laser output powers and scanning speeds are shown in Fig. 9. With an increase in laser output power and a decrease in

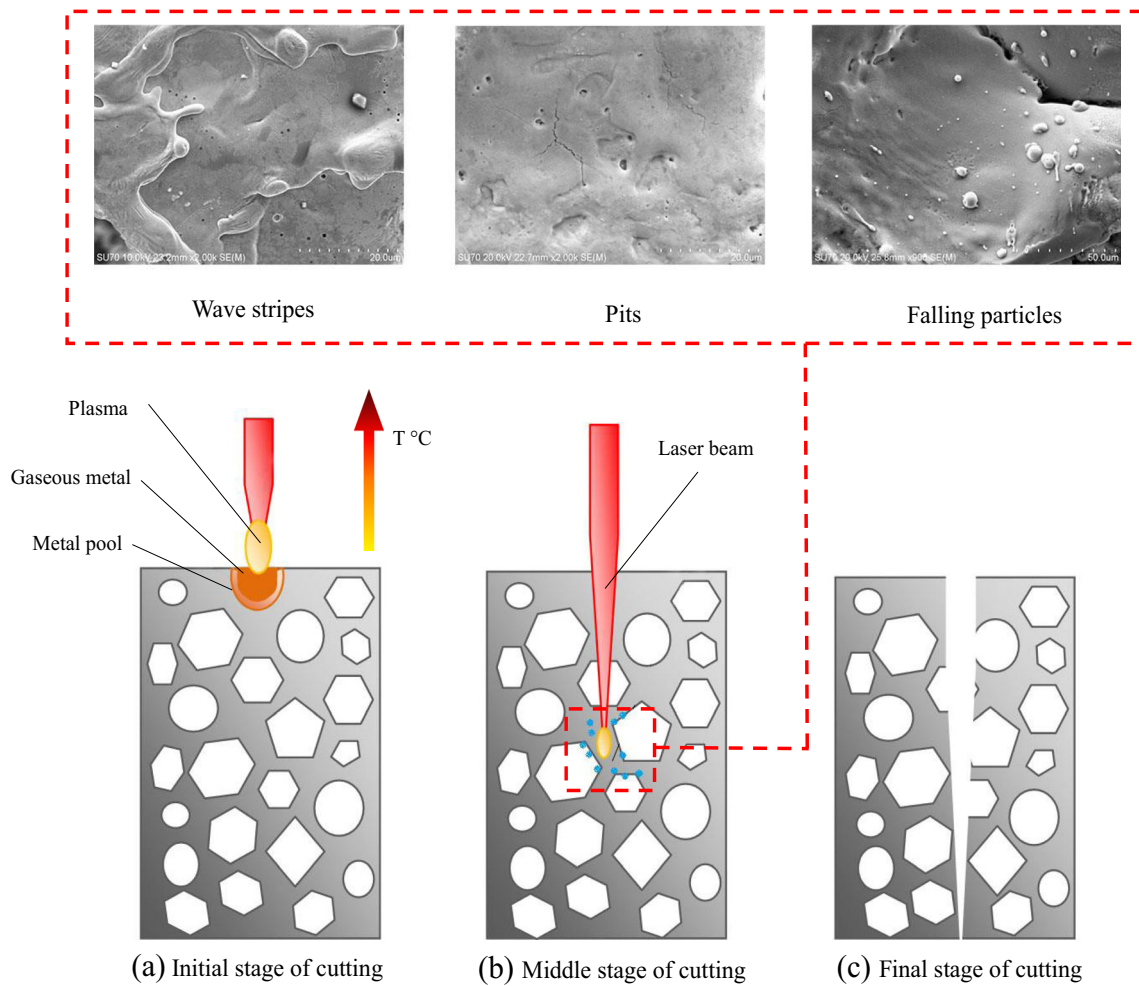


Fig. 4 Schematic of laser cutting process of metal foam

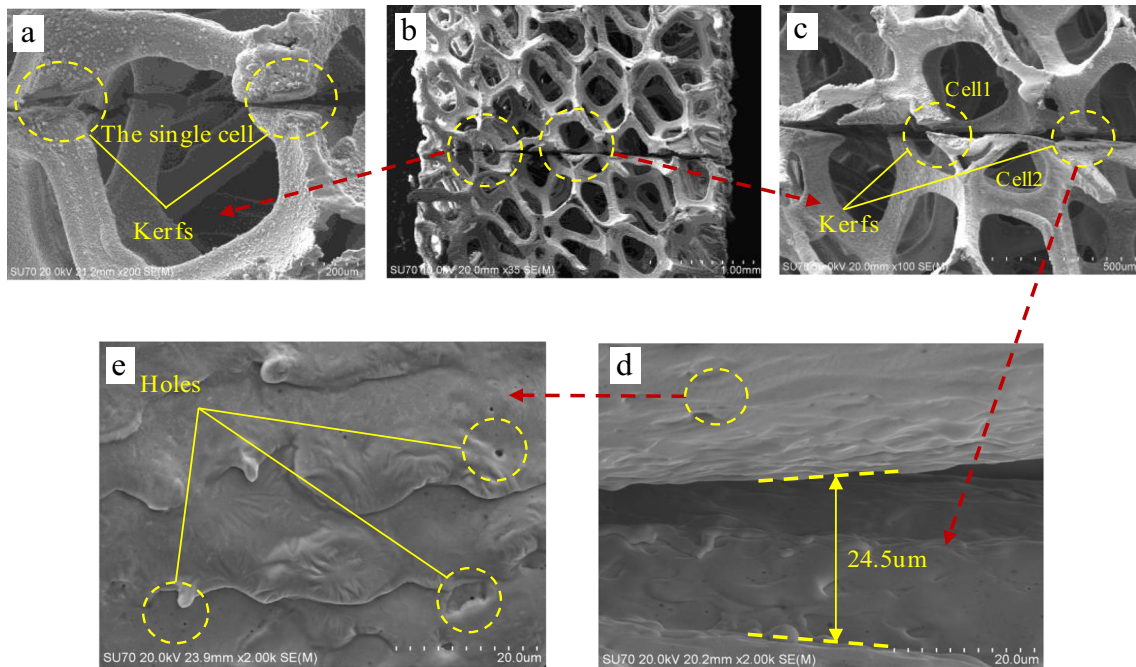
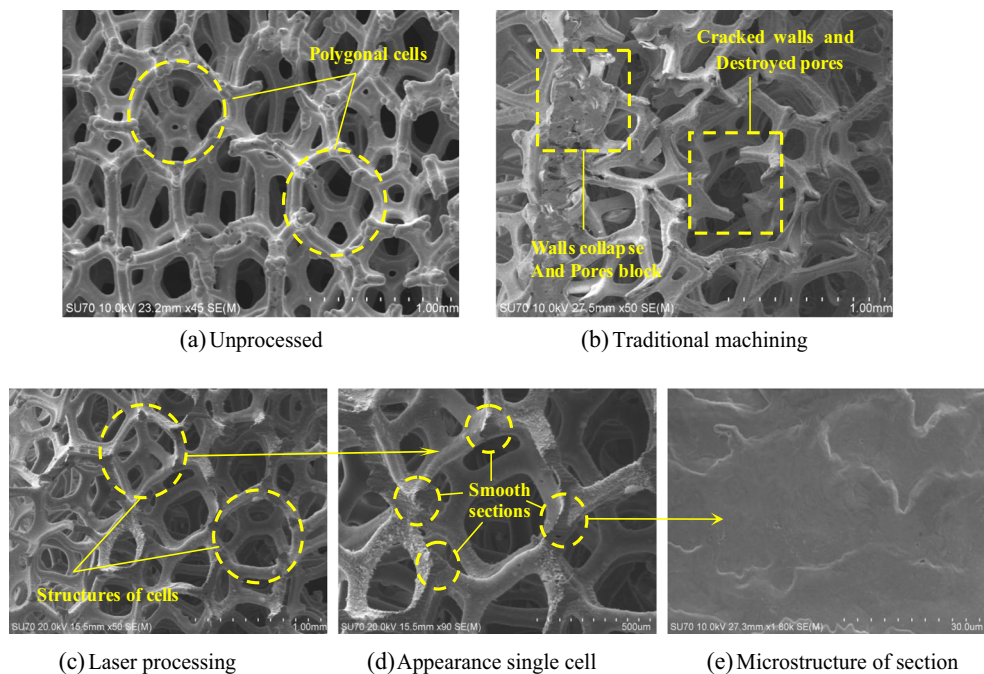


Fig. 5 SEM images of a kerf in metal foam using a laser cutting process: **a** kerf passing through a single cell, **b** shape of the kerf with 35× magnification, **c** kerf created on the wall between two cells, **d** shape of the kerf with 2000× magnification, and **e** the surface of the kerf

Fig. 6 SEM images of cut section of unprocessed metal foam, and using traditional machining and laser cutting



scanning speed, the laser cutting process improves the cutting depth for copper foam, although such improvement will gradually decrease. Adversely, it causes a greater heating effect and wider kerf, which increase the MRR and MOR. Thus, the selection of reasonable processing parameters is critical when cutting metal foam.

3.3 Effects of processing parameters on material removal rate

Figure 10 shows the MRR of metal foam using different processing parameters. For metal foam with different materials, the largest MRR was obtained for ferroalloy foam, and the smallest was obtained for copper foam. Thus, we determined that ferroalloy foam is easy to cut. This is attributed to the absorbance of the different materials. The absorbance of copper is the lowest during the laser cutting process, whereas that of

ferroalloy metal is the highest. A lower MRR was obtained with a lower absorbance [30]. Moreover, copper foam has higher thermal conductivity, which makes the material difficult to remove [31]. Hence, the copper foam exhibited the lowest MRR. For metal foam with different porosities, the MRR of metal foam with 90 PPI was slightly higher than that of metal foam with 110 PPI. The main reason for this may be that a lower extinction coefficient and higher transmittance of the metal foam with 90 PPI were obtained owing to the fewer pores present [24]. For different processing parameters, the MRR of different metal foams was increased with an increase in the laser output power, as shown in Figs. 10a, c. However, the MRR of different metal foams is increased with a decrease in scanning speed, as shown in Figs. 10b, d. This is because the material can absorb more energy with a higher laser output power and lower scanning speed during the laser cutting process, and the cutting ability of metal foam is enhanced, thereby increasing the MRR.

Fig. 7 SEM images of cutting depth of copper foam with different laser output powers

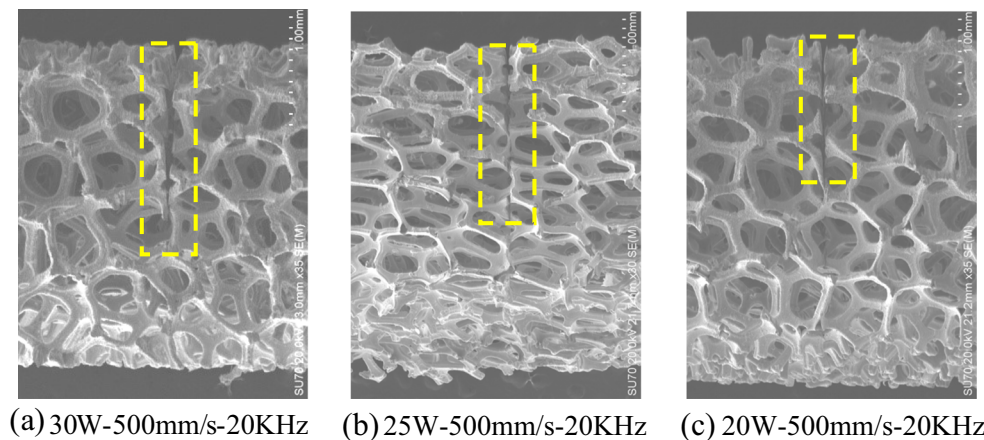
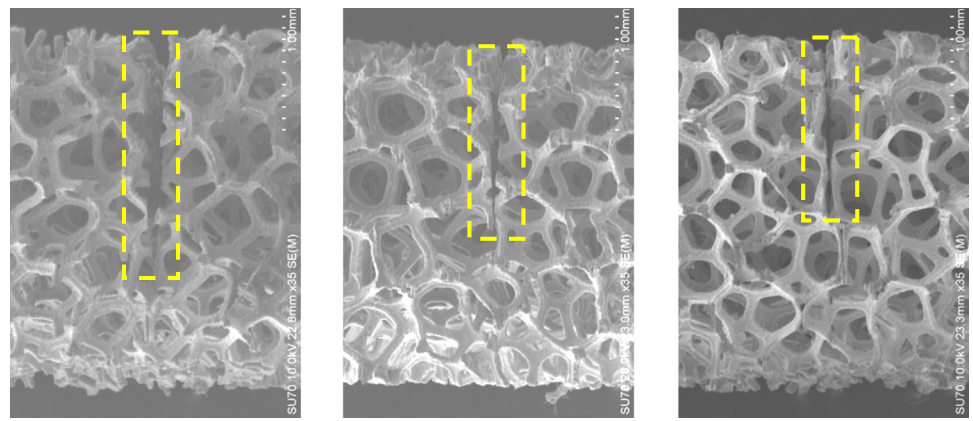


Fig. 8 SEM images of cutting sections of copper foam with different scanning speeds



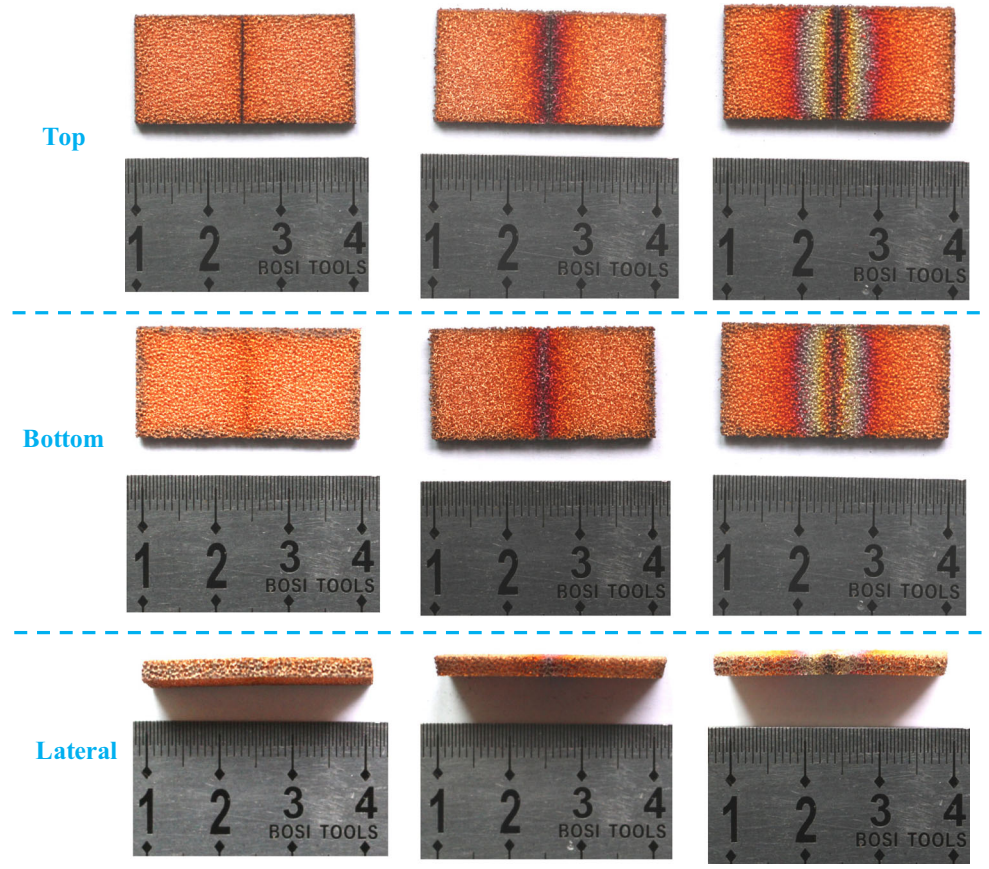
(a) 30W-200mm/s-20KHz (b) 30W-500mm/s-20KHz (c) 30W-800mm/s-20KHz

3.4 Effects of processing parameters on material oxidation rate

Figures 11 and 12 show the material oxidation rate of various types of metal foam with 110 PPI using different laser output powers and scanning speeds. On the whole, the ferroalloy foam exhibited the highest MOR, followed by copper foam and nickel foam. It could be that the ferroalloy foam was more easily oxidized at high temperature than the other metal

foams. However, some stable metal oxide films are produced during the oxidization process of nickel foam, which can inhibit the nickel foam surface from being oxidized further. Thus, the MOR of nickel foam is the lowest. For the different processing parameters, the MOR of different metal foams was increased with an increase in the laser output power and decrease in the scanning speed, which can be attributed to the temperature increase and extended time of the thermal effects occurring from such changes. In addition, we found that the

Fig. 9 Varying appearances of copper foam with different laser output powers and scanning speeds



(a) 20W-800mm/s-20KHz (b) 25W-500mm/s-20KHz (c) 30W-200mm/s-20KHz

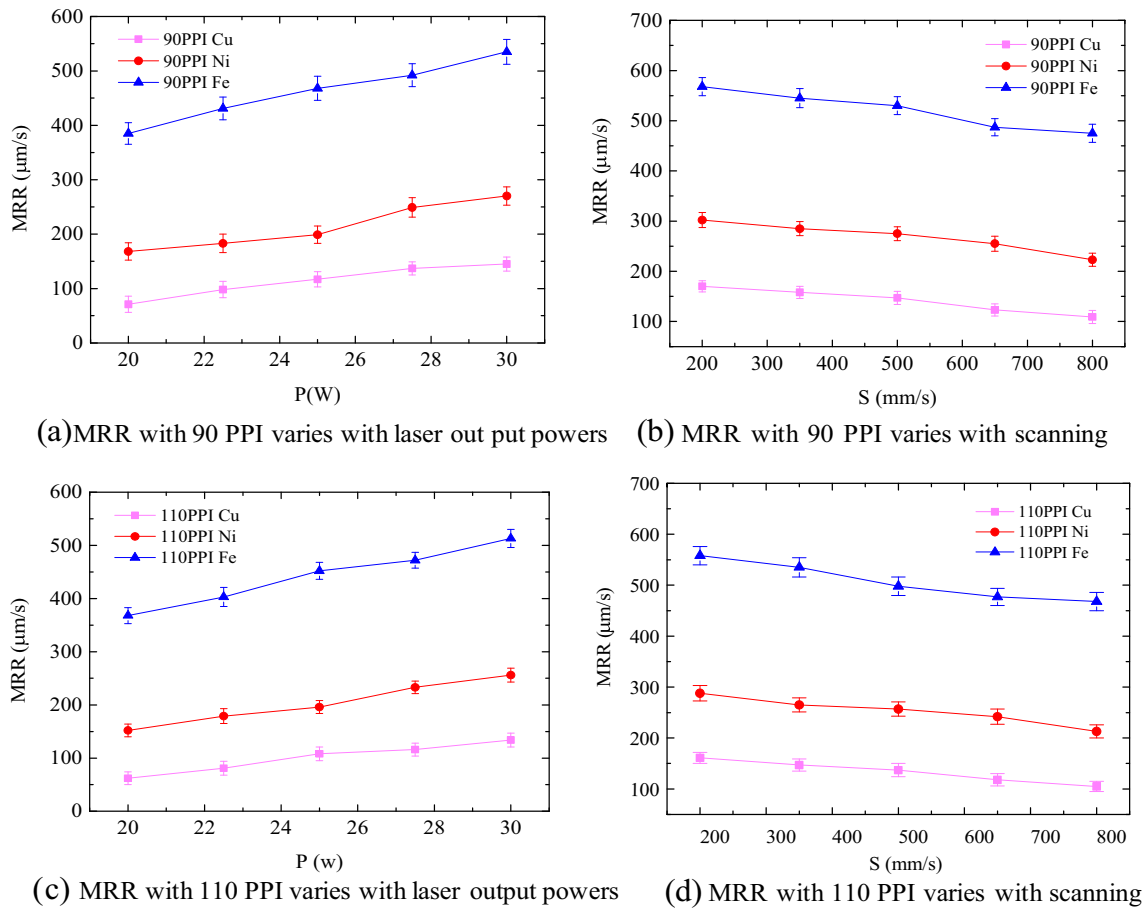


Fig. 10 Variation in material removal rate of metal foam using different processing parameters

MOR for 90 PPI is almost as high as for 110 PPI when applying the same type of materials and laser process parameters. Thus, the MOR is not clearly affected by the PPI of the metal foam.

4 Optimization for processing parameters

4.1 Regression equation

It is assumed that there are m experiment factors, which are independent variables x_j , where $j = 1, 2, 3...m$, and the

experiment targets are set to y_n . The general form of the quadratic regression equation can be expressed as follows:

$$\hat{y}_n = b_0 + \sum_{j=1}^m b_j x_j + \sum_{k < j} b_{kj} x_k x_j + \sum_{j=1}^m b_{jj} x_j^2 \quad k = 1, 2, 3, \dots, m-1 (j \neq k) \tag{5}$$

In this experiment, m is 2.

Based on the above method, copper foam of 110 PPI was selected as the sample material for the laser cutting process. The optimization method of the other metal foam types is similar to the one described here. Based on the CCD, nine

Fig. 11 MOR of 110 PPI metal foam using different laser output powers

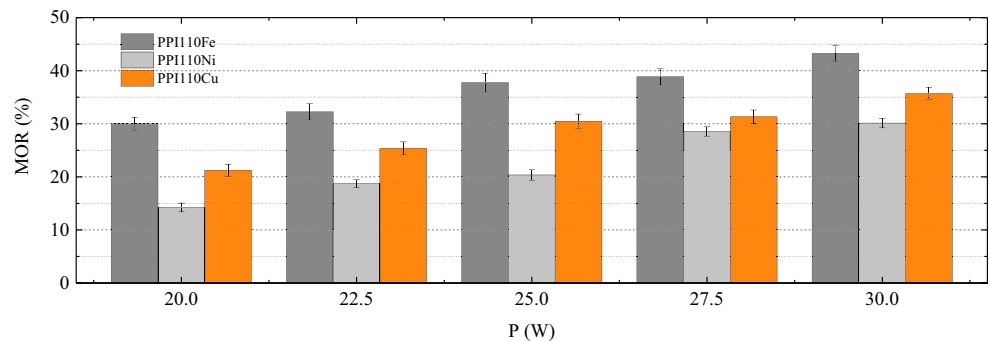


Fig. 12 MOR of 110 PPI metal foam using different scanning speeds

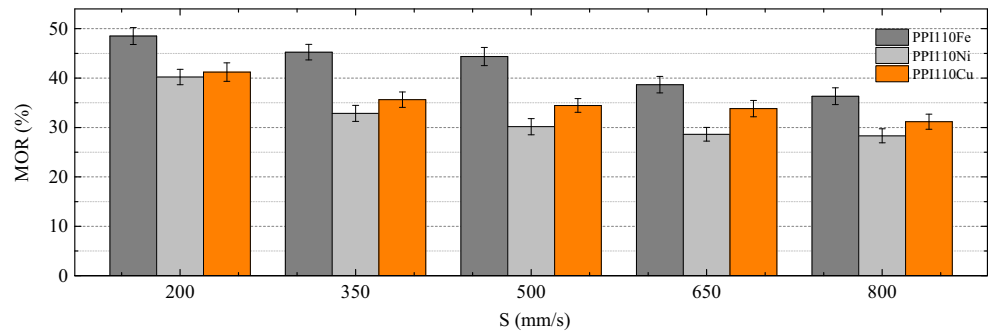


Table 4 Experimental results of central composite experimental design

Experiments		Material removal rate (μm/s)	Material oxidation rate (%)
Numbers	Symbols	y1	y2
1	P ₋₁ S ₋₁	65	21.67
2	P ₋₁ S ₁	55	17.61
3	P ₁ S ₋₁	156	45.28
4	P ₁ S ₁	102	26.42
5	P ₀ S ₋₁	117	35.83
6	P ₀ S ₁	81	23.54
7	P ₁ S ₀	134	36.83
8	P ₋₁ S ₀	62	21.59
9	P ₀ S ₀	108	29.63

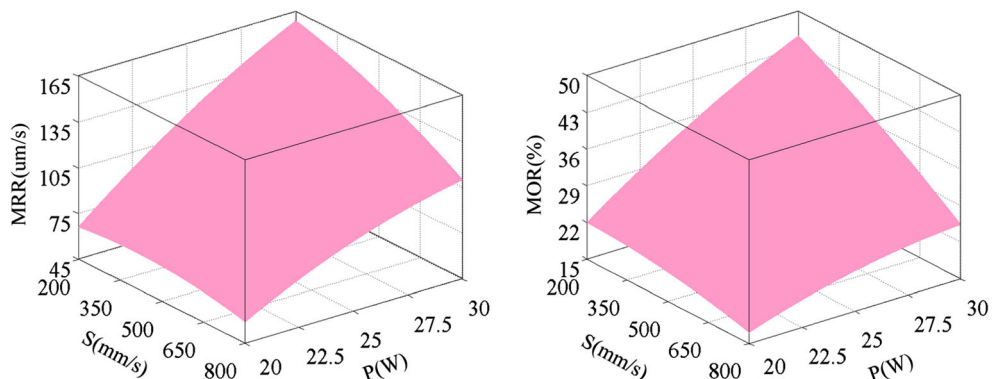
experiments were carried out. The MRR and MOR are the experimental targets, which are represented by y₁ and y₂, respectively. The experimental results are shown in Table 4.

The quadratic regression equations can be established based on the results of the CCD experiments, and the parameters of Eq. (5) can be calculated using the following:

$$b_j = \frac{\sum_k x_{kj} y_k}{\sum_k (x_{kj})^2} \tag{6}$$

$$b_{ij} = \frac{\sum_k x_{ki} x_{kj} y_k}{\sum_k x_{ki} x_{kj}} \quad (i \neq j) \tag{7}$$

Fig. 13 Material removal rate and material oxidation rate of 3D surface varying with different laser processing parameters



$$b_{jj} = \frac{\sum_k \left(x_{kj}^2 - \frac{1}{N} \sum_k x_{kj}^2 \right) y_k}{\sum_k \left(x_{kj}^2 - \frac{1}{N} \sum_k x_{kj}^2 \right)^2} \tag{8}$$

$$b_0 = \bar{y} - \frac{1}{N} \sum_{j=1}^m b_{jj} \cdot \sum_k x_{kj}^2 \tag{9}$$

where N is the total number of experiments and \bar{y} is the average value of nine experimental results.

Thus, the quadratic regression equations of MRR and MOR can be expressed as follows:

$$\begin{aligned} \hat{y}_1 = & -306.481 + 23.3333P \\ & + 0.18703S - 0.00733PS - 0.25333P^2 \\ & + 0.000059S^2 \end{aligned} \tag{10}$$

$$\begin{aligned} \hat{y}_2 = & -68.9593 + 5.68866P \\ & + 0.05275S - 0.00247PS - 0.05733P^2 - 0.000011S^2 \end{aligned} \tag{11}$$

Statistical analysis 3D surface plots of MRR and MOR can be established by combining regression Eqs. (10) and (11), as shown in Fig. 13. The MRR increases with an increment in the laser output power and a decrement in the scanning speed. The same variation was also observed for the MOR. Therefore, the single optimum condition is the one that provides a higher MRR with an improved MOR. Summarizing

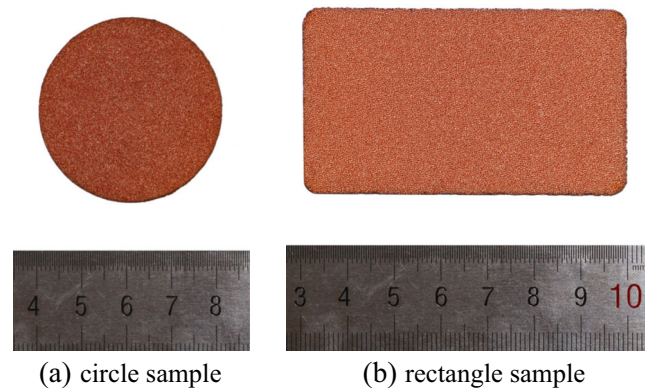
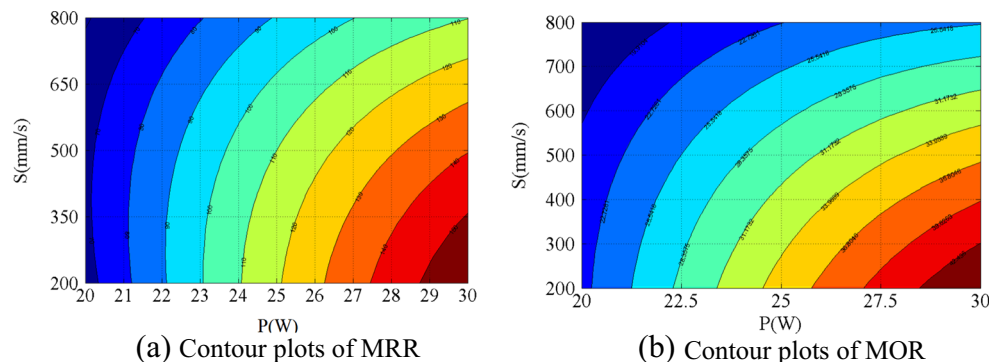
Table 5 ANOVA results for material removal and material oxidation rates

Source	<i>t</i> Stat	<i>p</i> value	Source	<i>t</i> Stat	<i>p</i> value
MRR			MOR		
<i>P</i>	6.171664	0.008968	<i>P</i>	5.512937	0.011753
<i>S</i>	6.018875	0.009191	<i>S</i>	6.322404	0.007999
<i>P</i> * <i>S</i>	-8.16538	0.003842	<i>P</i> * <i>S</i>	-10.2289	0.001992
<i>P</i> ²	-3.32431	0.044909	<i>P</i> ²	-2.79942	0.067886
<i>S</i> ²	-1.87338	0.157724	<i>S</i> ²	-2.80193	0.067744
Note: <i>F</i> = 246.82, <i>R</i> ² = 0.9975			Note: <i>F</i> = 265.53, <i>R</i> ² = 0.9977		
<i>F</i> _{0.01(6,2)} = 10.92, <i>t</i> _{0.05(6)} = 1.943, <i>t</i> _{0.1(6)} = 1.440					

the results from Fig. 13, it was found that the laser output power has a more significant effect on the MRR, and the scanning speed has a more significant effect on the MOR.

Analysis of variance (ANOVA) results for the MRR and MOR are shown in Table 5. A statistical analysis of each response was conducted for a 95% confidence level, where the *R*² of each response is 97%, which indicates that these models have a high level of statistical significance and a good degree of fitting. From Table 5 (MRR), the *p*-values for all factors are smaller than 0.05 except for the last one, *S*². This shows that the laser output power and the scanning speed significantly affect both the MRR and the interaction *P***S*. In addition, the *p* values for *S* are smaller than for *P*. This shows that the laser output power has a greater effect than the scanning speed for the MRR, which is consistent with the above conclusion. As indicated in Table 5 (MOR), the *p* values for all factors are smaller than 0.05, and the *p* value for *S* is smaller than that for *P*. These results clearly show that the main parameter affecting the MOR is the scanning speed.

Optimized parameters For optimum efficiency, the MRR is expected to increase quickly with a slow increase in the MOR, and using contour plots of the MRR and MOR, as shown in Fig. 14. As Fig. 14a indicates, the MRR increases more efficiently with a laser output power of below 26 W. For example, when the laser output power increases from 22 to 26 W, the MRR increases from about 90 to 130 mm/s. However, when

Fig. 14 Contour plots of **a** MRR and **b** MOR with varying laser processing parameters**Fig. 15** Appearance of processed copper foam samples using proposed laser cutting process and optimized parameters

the laser output power increases from 26 to 30 W, the MRR increases from about 130 to 150 mm/s. It seems that the influence of the laser output power diminishes the softening effect above this point. Thus, the optimum laser output power is considered to be around 26 W. As shown in Fig. 14b, the MOR decreases more efficiently with a scanning speed above 400 mm/s at a laser output power of 26 W. However, the MOR decreases slowly with a rapid drop in the MRR at a scanning speed of above 500 mm/s. Comparing the scanning speed of 200 to 500 mm/s with that of 500 to 800 mm/s, the increase in the MRR declines by about 3-fold. Thus, the optimized parameters can be confirmed as a laser output power of around 26 W and a scanning speed ranging from 400 to 500 mm/s.

4.2 Processing metal foam samples using optimized parameters

The optimization parameters for the laser processing of metal foam are confirmed to be a laser output power of 26 W and a scanning speed of 475 mm/s. Copper foam of 110 PPI with a Ø40 mm diameter and 40 × 70-mm² rectangular shape was selected as the processing sample. These metal foam samples with different shapes can be used in a methanol reforming hydrogen reactor as catalyst carriers [32, 33]. Owing to the larger surfaces of these samples than those of the previous experimental samples, the kerf width was set to 0.1 mm. The

appearance of the processed copper foam samples using the proposed laser cutting process and the optimized parameters are shown in Fig. 15. It was found that copper foam with a regular shape such as a circle or rectangle can be successfully cut using a short processing time (about 5 min) when applying the optimized parameters.

5 Conclusions

A laser cutting process was used to efficiently and directly cut metal foam into regular shapes. After the laser cutting process of metal foam was analyzed, the effects of the different materials and PPI on the cutting process were investigated in detail. The main conclusions are as follows:

- (1) Metal foam made of copper, ferroalloy, or nickel can be effectively formed into regular shapes using the proposed direct laser cutting process. The laser cutting method can produce a good cutting section without distortion, bending, or collapse of the pore structure.
- (2) Of the three types of foam, the highest MRR and MOR were observed for ferroalloy foam. Of the two different PPI considered, metal foam of 90 PPI showed a much larger MRR than that of 110 PPI. The MRR and MOR were increased with an increase in laser output power and decrease in scanning speed.
- (3) The laser cutting parameters were optimized using the CCD method. When a laser output power of 26 W and a scanning speed of 475 mm/s were selected, copper foam with a good cutting section and a regular shape was obtained.

Acknowledgements This work was supported by the National Natural Science Foundation of China (No. 51475397) and the Natural Science Foundation of Fujian Province of China (No. 2017J06015). In addition, support from the Fundamental Research Funds for Central Universities, Xiamen University (No. 20720160079), and Science and technology Plan Project of Xiamen City (Project No. 3502Z20173024) are also acknowledged.

References

1. Jin H, Fan L, Zhu Z, Yu Z (2017) A pore-scale visualized study of melting heat transfer of a paraffin wax saturated in a copper foam: effects of the pore size. *Int J Heat Mass Transf* 112:39–44
2. Castro G, Nutt SR (2012) Synthesis of syntactic steel foam using mechanical pressure infiltration. *Mater Sci Eng* 535:274–280
3. Ji K, Zhao H, Zhang J, Chen J, Dai Z (2014) Fabrication and electromagnetic interference shielding performance of open-cell foam of a Cu-Ni alloy integrated with CNTs. *Appl Surf Sci* 311:351–356
4. Shen CC, Jian TY, Wang YT (2013) Steam reforming of methanol in a compact copper microchannel foam reactor. *Fuel Cells* 13(6):965–970
5. Giani L, Groppi G, Tronconi E (2005) Mass-transfer characterization of metallic foams as supports for structured catalysts. *I&EC research* 44(14):4993–5002
6. Aartun I, Silberova B, Venvik H, Pfeifer P, Gorke O, Schubert K, Holmen A (2005) Hydrogen production from propane in Rh-impregnated metallic microchannel reactors and alumina foams. *Catal Today* 105(3–4):469–478
7. Muth J, Poggie M, Kulesha G, Michael RM (2013) Novel highly porous metal technology in artificial hip and knee replacement: processing methodologies and clinical applications. *Journal of Metals* 65:318–325
8. Song Z, Kishimoto S (2006) The cell size effect of closed cellular materials fabricated by pulse current assisted hot isostatic pressing on the compressive behavior. *Scr Mater* 54(8):1531–1535
9. Wang M, Pan N (2008) Modeling and prediction of the effective thermal conductivity of random open-cell porous foams. *Int J Heat Mass Transf* 51:1325–1331
10. Billiet M, Schanmpheleire SD, Huisseune H, Paeppe MD (2015) Influence of orientation and radiative heat transfer on aluminum foams in buoyancy-induced convection. *Materials* 8:6792–6805
11. Raj ER, Daniel BSS (2008) Manufacturing challenges in obtaining tailor-made closed-cell structures in metallic foams. *Int J Adv Manuf Technol* 38:605–612
12. Han GL, Li WD (2009) Processing and mechanical properties of magnesium foams. *J Porous Mater* 16:251–256
13. Ozan S, Bilhan S (2008) Effect of fabrication parameters on the pore concentration of the aluminum metal foam, manufactured by powder metallurgy. *Int J Adv Manuf Technol* 39(3–4):257–260
14. Tian Q, Guo X (2011) Manufacturing microporous foam zinc materials with high porosity by electrodeposition. *J Wuhan Univ Technol-Mater Sci Edition* 26(5):843–846
15. Banhart J (2001) Manufacture, characterization and application of cellular metals and metal foams. *Prog Mater Sci* 46:559–632
16. Kwon YJ, Shigematsu I, Saito N (2008) A novel surface modification process for porous metals using friction phenomena. *Mater Lett* 62:4458–4460
17. Scott MF, Albert SJ, Jun Q (2004) Investigation of the spark cycle on material removal rate in wire electrical discharge machining of advanced materials. *Int J Mach Tool & Manuf* 44:391–400
18. Alexander MM, Dennis K, Norbert J, Kai O (2016) Machining of metal foams with varying mesostructure using wire EDM. *Procedia CIRP* 42:263–267
19. Zou R, Yu Z, Liu W, Guo M, Li J (2016) Influence of porous structure on the machining performance of micro EDM. *J Mater Process Technol* 232:43–51
20. Cai C, Tao W, Li L, Chen Y (2015) Weld bead formation and corrosion behavior of pulsed laser welded zirconium alloy. *Int J Adv Manuf Technol* 77:621–628
21. Zhou W, Ling W, Liu W, Peng Y, Peng J (2015) Laser direct micromilling of copper-based bioelectrode with surface microstructure array. *Opt Lasers Eng* 73:7–15
22. Ke W, Zhu D, Cai G (2010) Simulation and analysis of spectral emissivity of metals. *Acta Aeronautica et Astronautica Sinica* 31(11):2139–2145
23. Zhao CY, Lu TJ, Hodson HP (2004) Thermal radiation in ultralight metal foams with open cells. *Int J Heat Mass Transf* 47:2927–2939
24. Zhang B, Dembinski L, Coddet C (2013) The study of the laser parameters and environment variables effect on mechanical properties of high compact parts elaborated by selective laser melting 316L powder. *Mater Sci Eng A* 584:21–31
25. Peirovi S, Pourasghar M, Nejad Farokhi A, Hassan MA (2017) A study on the different finite element approaches for laser cutting of aluminum alloy sheet. *Int J Adv Manuf Technol* 93:1399–1413
26. Lacroix M, Nguyen P, Schweich D, Pham HC, Savin PS, Edouard D (2007) Pressure drop measurements and modeling on SiC foams. *Chem Eng Sci* 62:3259–3267

27. Li X, Chen J, Liu F, Li X, Zhang Q (2010) PMMA microlens array preparation using carbon dioxide laser. *Acta Opt Sin* S1:s100104
28. Kaya AC, Fleck C (2014) Deformation behavior of open-cell stainless steel foams. *Mater Sci & Eng A* 615:447–456
29. Nisar S, Sheikh MA, Lin L, Safdar S (2010) The effect of material thickness, laser power and cutting speed on cut path deviation in high-power diode laser chip-free cutting of glass. *Opt Laser Technol* 42(6):1022–1031
30. Lin X, Shao T (2001) Lumped method for the measurement of laser Absorptance of materials. *Acta Phys Sin* 50(5):856–859
31. Adrian HAL, Alessandro A, Alessandro F, Luca R (2018) Long-pulse quasi-CW lasercutting of metals. *Int J Adv Manuf Technol* 94:155–162
32. Zhou W, Ke Y, Wang Q, Wan S, Lind J, Zhang J, Huie KS (2017) Development of cylindrical laminated methanol steam reforming microreactor with cascading metal foams as catalyst support. *Fuel* 191:46–53
33. Yu H, Chen H, Pan M, Tang Y, Zeng K, Peng F, Wang H (2007) Effect of the metal foam materials on the performance of methanol steam micro-reformer for fuel cells. *Appl Catal A Gen* 327(1):106–113