

Estimating the effect of sulfonylurea on HbA_{1c} in diabetes: a systematic review and meta-analysis

J. A. Hirst · A. J. Farmer · A. Dyar · T. W. C. Lung · R. J. Stevens

Received: 22 November 2012 / Accepted: 18 January 2013 / Published online: 15 March 2013

© The Author(s) 2013. This article is published with open access at Springerlink.com

Abstract

Aims/hypothesis Sulfonylureas are widely prescribed glucose-lowering medications for diabetes, but the extent to which they improve glycaemia is poorly documented. This systematic review evaluates how sulfonylurea treatment affects glycaemic control.

Methods Medline, EMBASE, the Cochrane Library and clinical trials registries were searched to identify double-blinded randomised controlled trials of fixed-dose sulfonylurea monotherapy or sulfonylurea added on to other glucose-lowering treatments. The primary outcome assessed was change in HbA_{1c}, and secondary outcomes were adverse events, insulin dose and change in body weight.

Results Thirty-one trials with a median duration of 16 weeks were included in the meta-analysis. Sulfonylurea monotherapy (nine trials) lowered HbA_{1c} by 1.51% (17 mmol/mol) more than placebo (95% CI, 1.25, 1.78). Sulfonylureas added to oral diabetes treatment (four trials) lowered HbA_{1c} by 1.62% (18 mmol/mol; 95% CI 1.0, 2.24) compared with

the other treatment, and sulfonylurea added to insulin (17 trials) lowered HbA_{1c} by 0.46% (6 mmol/mol; 95% CI 0.24, 0.69) and lowered insulin dose. Higher sulfonylurea doses did not reduce HbA_{1c} more than lower doses. Sulfonylurea treatment resulted in more hypoglycaemic events (RR 2.41, 95% CI 1.41, 4.10) but did not significantly affect the number of other adverse events. Trial length, sulfonylurea type and duration of diabetes contributed to heterogeneity. **Conclusions/interpretation** Sulfonylurea monotherapy lowered HbA_{1c} level more than previously reported, and we found no evidence that increasing sulfonylurea doses resulted in lower HbA_{1c}. HbA_{1c} is a surrogate endpoint, and we were unable to examine long-term endpoints in these predominately short-term trials, but sulfonylureas appear to be associated with an increased risk of hypoglycaemic events.

Keywords Clinical science · Human · Meta-analysis · Oral pharmacological agents · Systematic review

Electronic supplementary material The online version of this article (doi:10.1007/s00125-013-2856-6) contains peer-reviewed but unedited supplementary material, which is available to authorised users.

J. A. Hirst (✉) · A. J. Farmer · R. J. Stevens
Department of Primary Care Health Sciences, University of Oxford, Radcliffe Observatory Quarter, Woodstock Road, Oxford OX2 6GG, UK
e-mail: jennifer.hirst@phc.ox.ac.uk

J. A. Hirst · A. J. Farmer · R. J. Stevens
National Institute for Health Research School for Primary Care Research, Oxford, UK

A. Dyar
Torbay Hospital, Torquay, UK

T. W. C. Lung
Centre for Health, Programs, Policy and Economics, School of Population Health, University of Melbourne, Melbourne, Australia

Introduction

Sulfonylureas have long been established in the treatment of diabetes and were the first oral glucose-lowering medications to be introduced into clinical practice. They are still widely used and are the second-line recommended choice of oral glucose-lowering treatment after metformin in the UK [1]. There are still a large number of people who are taking sulfonylureas, either as a first-line diabetes treatment or in combination with another diabetes medication, accounting for around 25% of newly initiated oral diabetes medications [2]. Sulfonylureas act primarily by blocking ATP-sensitive potassium channels in the pancreatic beta cells, which stimulates insulin secretion [3]. A consensus report produced jointly by American Diabetes Association and the European Association for the Study of Diabetes reported that

sulfonylureas lowered HbA_{1c} by 1.5% (corresponding to 16 mmol/mol) [4], but this was based on results from a single clinical trial [5]. Moreover, these results are based on a single sulfonylurea in combination with metformin and therefore do not assess the effects of sulfonylurea monotherapy.

More recently, a systematic review examined the effect of oral antidiabetic agents on HbA_{1c} levels, although only six trials of sulfonylurea were included [6]. This reported that sulfonylurea treatment reduced HbA_{1c} by around 1% (corresponding to 11 mmol/mol). This systematic review included trials of sulfonylureas in which dose changes were permitted, and combined the results from trials of sulfonylurea monotherapy, and sulfonylureas used in combination with another oral medication or with insulin. In addition to this, several other systematic reviews have assessed the effect of sulfonylureas in combination with other medications on HbA_{1c} level [7–9], and a meta-analysis examining the effect of baseline HbA_{1c} on efficacy of glucose-lowering treatment [10]. There has, however, been no systematic review that has separately examined the effects of sulfonylurea as monotherapy, as an add-on to oral therapy or as an add-on to insulin therapy.

We therefore conducted a systematic review of randomised controlled trials to examine how much sulfonylurea treatment reduces HbA_{1c} on its own as a monotherapy compared with placebo or added on to a background therapy compared with the background therapy alone in people with diabetes. We restricted our attention to fixed-dose sulfonylureas to better examine HbA_{1c} lowering. In addition, the dose–effect relationship of sulfonylureas was examined in head-to-head trials of different sulfonylurea doses. The effect of sulfonylurea treatment on insulin dose requirement and the total number of adverse events and hypoglycaemic events in each treatment group were also compared.

Methods

We searched three databases, Medline, Embase and the Cochrane Central Register of Controlled Trials, as well as two clinical trials registries—Clinicaltrials.gov and the EU Clinical Trials Register—up until 7 December 2012. We identify randomised controlled trials of at least 12 weeks' duration with no language restrictions (details of the Medline search terms are given in the electronic supplementary material [ESM] Text). A protocol for the systematic review has not been published. Trials comparing fixed-dose sulfonylurea treatment administered either as monotherapy vs placebo, as an add-on to another fixed-dose oral glucose-lowering drug, or as an add-on to insulin treatment, as well as trials that compared two or more different doses of the same sulfonylurea, were included in the review. Hand-searching of reference lists of relevant articles were also conducted.

Articles were reviewed by two reviewers. Inclusion criteria were as follows: trials had to include patients with diabetes, be randomised, be double-blinded, be at least 12 weeks in duration, have a fixed dose of sulfonylurea either as monotherapy, as an add-on to another oral glucose-lowering therapy or as an add-on to insulin therapy, have the same sulfonylurea and background oral therapy dose for each participant, and report participants' HbA_{1c} levels after baseline.

Data extraction Data were extracted in duplicate by two reviewers into structured forms. Extracted items included study characteristics, patient characteristics and outcome results. For sulfonylurea monotherapy and sulfonylurea added on to insulin, the primary outcome was the mean difference between the treatment and comparator group HbA_{1c} levels at the end of the trial.

After data extraction, we chose the mode of analysis to maximise the number of data directly available without imputation. For the analyses of the monotherapy and insulin trials, the majority of trials reported HbA_{1c} change since baseline, and we selected this as the outcome for analysis, imputing it from endpoint data where necessary (one trial). For the analysis of oral combination trials, the majority of trials reported endpoint data, and we selected this for analysis, imputing it from change data where necessary (one trial). If SDs were not reported, they were imputed by averaging reported SDs from other trials in the same comparison. To check sensitivity to these approximations, we reran analyses excluding trials in which these were necessary and obtained broadly similar results (ESM Table 1). If median HbA_{1c} instead of mean was reported, this was used as an approximation to mean HbA_{1c}.

All of the trials covered in this review reported HbA_{1c} units as a percentage of total haemoglobin standardised to the methods of the DCCT. Results are therefore reported in DCCT units as a percentage and have been converted into the new SI units using International Federation of Clinical Chemistry and Laboratory Medicine units of millimoles per mole of haemoglobin. Other outcomes extracted and assessed in post hoc analyses were total number of adverse events, number of hypoglycaemic events, withdrawal due to adverse events, number of serious adverse events, change in insulin dose and change in body weight.

Statistical analysis Analysis was performed using a DerSimonian and Laird random effects meta-analysis in Stata version 11.1 (Stata Corporation, College Station, TX, USA), reporting the mean difference in HbA_{1c} as the primary outcome. Secondary outcomes were insulin dose in trials of sulfonylurea and insulin, adverse events and change in body weight. Because insulin dose was reported both as international units of insulin and units per kilogram body

weight, we converted to a standardised mean difference to allow all the trials to be combined. Adverse events data were pooled as RRs using the Mantel–Haenszel random effects model. Data from trials reporting the number of patients who experienced an adverse event were combined with data from trials reporting the total number of adverse events (potentially including multiple episodes for a single patient) in the meta-analysis. This was achieved by calculating the number of events per 10 patient-years for trials that reported results as the total number of adverse events.

One paper [11] reported results from two trials that were identical in design but compared different doses of glipizide in each trial. Results for two doses (5 and 20 mg) were reported as combined mean and SE for both the trials. We included the results of these trials in the dose-comparison analysis and kept them as two separate trials as far as possible in the analysis.

Heterogeneity was reported using the I^2 statistic [12]. High heterogeneity was investigated by meta-regression using the “metareg” command in Stata. We explored in *post-hoc* analyses whether the heterogeneity could be explained by drug type, comparator type, age, BMI, duration of diabetes, length of follow-up, baseline HbA_{1c} and year of trial publication. Because of a previous report of an association between baseline HbA_{1c} and glucose lowering [10], we also plotted, as a *post-hoc* analysis, mean reduction in HbA_{1c} during the trial against mean baseline HbA_{1c} for the intervention group, for the control group, and for the difference between the intervention and control groups.

To address possible publication bias, we used Egger’s test for funnel plot asymmetry [13] wherever possible (including at least 10 trials in the analysis). We also conducted sensitivity analyses excluding smaller trials (fewer than 100 participants) where possible (ESM Fig. 1). We considered trial quality using the headings of the Cochrane Risk of Bias tool [14] as follows. For random sequence generation and allocation concealment, we included only randomised trials, and we report the extent of detail on randomisation given by the trials included. For blinding, we include only studies that stated they were double-blinded, which we presumed to imply blinding of outcome assessors as well as blinding of patients. To address possible attrition bias, we conducted sensitivity analyses to exclude trials in which fewer than 75% of participants completed the trial. Risk of bias due to selective reporting is difficult to quantify, but we consider in the Discussion how it may affect our study.

Results

Searches retrieved a total of 4,308 articles, of which 31 trials were included in the final analysis (Fig. 1). Searches of clinical trials registers retrieved a total of 127 trials, from

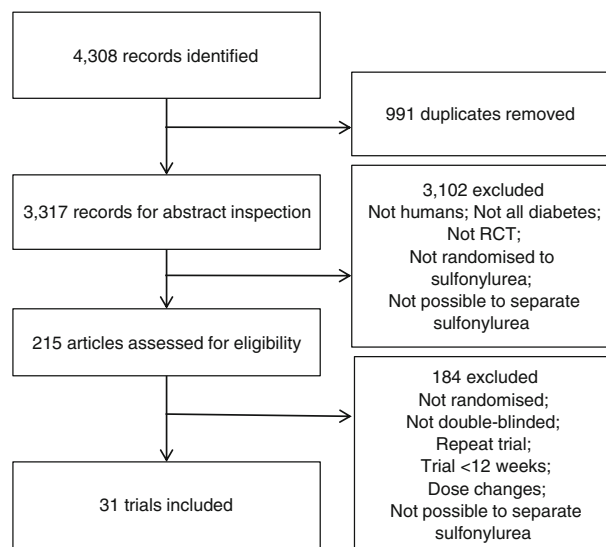


Fig. 1 Flow chart of searches

which no additional trials were identified for inclusion. All the included trials reported that they randomised patients to treatments, but only five reported the method of randomisation. One identified trial of glipizide added on to human proinsulin [15] was not included in the systematic review because human proinsulin is not a recognised diabetes treatment despite meeting all other inclusion criteria. Details of the trials included are shown in Table 1; trials varied in length from 12 weeks to 3 years, mean patient age varied from 34 to 66.5 years, and mean baseline HbA_{1c} varied from 4.6% (corresponding to 26.8 mmol/mol) to 13.6% (corresponding to 125.1 mmol/mol). Of these, nine trials were included in the analysis of sulfonylurea monotherapy vs placebo, four trials of sulfonylurea as add-on to another oral treatment, 17 trials of sulfonylurea in combination with insulin compared to insulin alone, and four trials in the dose-comparison analysis.

Sulfonylurea monotherapy trials Two of the nine trials (representing 1,151 participants) of sulfonylurea monotherapy had multiple arms with different doses, which resulted in 12 comparisons. When the data were pooled, the HbA_{1c} level was 1.51% lower (corresponding to 16 mmol/mol) in the sulfonylurea group compared with the placebo group (95% CI 1.25, 1.78, $I^2=59.8%$; Fig. 2). Sensitivity analyses in which five smaller trials (fewer than 100 participants) were excluded obtained similar results (ESM Table 1). We investigated sources of heterogeneity in these trials and found that the mean age of the participants explained all of the heterogeneity.

Trials of sulfonylurea added on to fixed-dose oral glucose-lowering medication Four trials (representing 1,381 participants) were included in the meta-analysis of sulfonylurea

Table 1 Included trials

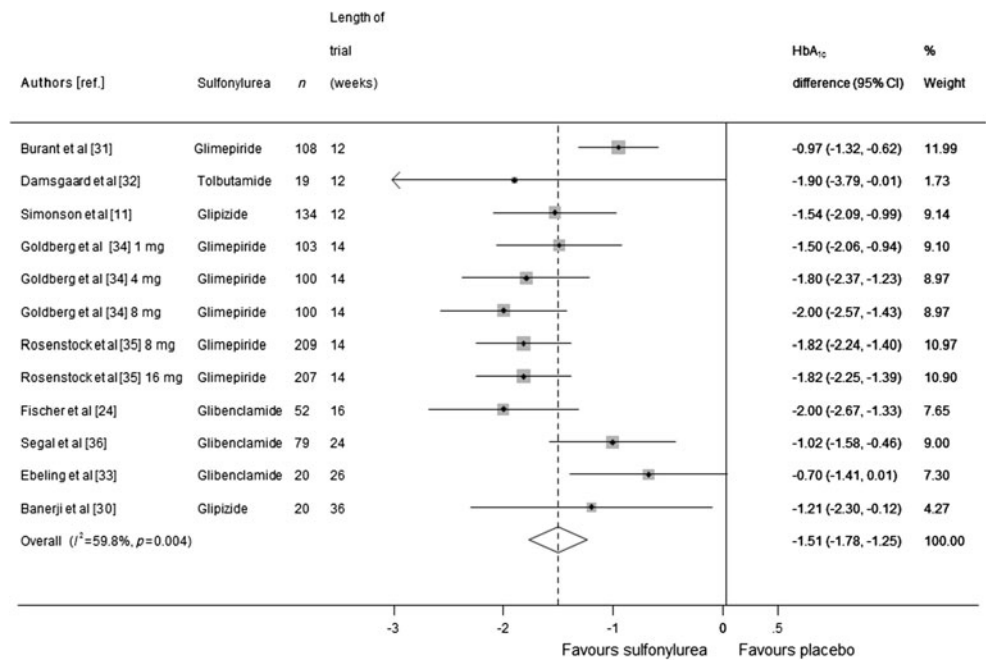
Study	<i>n</i>	Sulphonylurea	Dose (mg)	<i>n</i>	Comparator	<i>n</i>	Country	Trial length (weeks)	% Male	Mean age	Mean BMI	Mean baseline HbA _{1c} (%)	Mean baseline HbA _{1c} (mmol/mol)	% Completed
Sulphonylurea monotherapy trials														
Banerji et al (1995) [30]	20	Glipizide	2.5	10	Placebo	10	USA	36	50	–	27.1	4.7	28	–
Burant et al (2012) [31]	108	Glimepiride	4	57	Placebo	51	International	12	55	52.5	31.1	8.4	68	88
Damsgaard et al (1982) [32]	19	Tolbutamide	1,500	19	Placebo	19	Denmark	12	32	58.8	–	13.6	125	–
Ebeling et al (2001) [33]	20	Glibenclamide	2.5	10	Placebo	10	Finland	26	72	55.2	30.9	8.8	73	–
Fischer et al (2003) [24]	52	Glibenclamide	3	27	Placebo	25	Germany	16	63	58.3	28.9	8.3	67	–
Goldberg et al (1996) [34]—1 mg	103	Glimepiride	1	78	Placebo	25	USA	14	70	59.3	29.2	7.8	62	77
Goldberg et al (1996) [34]—4 mg	100	Glimepiride	4	76	Placebo	24	USA	14	57	58.4	29.7	7.7	61	86
Goldberg et al (1996) [34]—8 mg	100	Glimepiride	8	76	Placebo	24	USA	14	59	59.8	29.5	7.8	62	86
Rosenstock et al (1996) [34]—low	209	Glimepiride	8	169	Placebo	40	USA	14	85	60.5	–	8.1	65	80
Rosenstock et al (1996) [35]—high	207	Glimepiride	16	168	Placebo	39	USA	14	83	60.7	–	8.1	65	83
Segal et al (1997) [36]	79	Glibenclamide	3.6	37	Placebo	42	International	24	59	57.6	29.1	8.1	65	86
Simonson et al (1997) [11]	134	Glipizide	5	66	Placebo	68	USA	12	68	58.8	29.4	8.4	68	–
Add-on to oral medication														
DeFronzo and Goodman (1995) [5]	423	Glibenclamide+metformin	20	213	Placebo+metformin (2,500 mg)	210	USA	29	46	55.5	29	8.8	73	83
Feinglos et al (2005) [18]	122	Glipizide+metformin	2.5	61	Placebo+metformin (1,500 mg)	61	USA	16	43	58.3	31.9	7.5	58	92
Gallwitz et al (2010) [25], Nauck et al (2009) [37], Jendle et al (2009) [38]	363	Glimepiride+metformin	4	242	Placebo+metformin (2,000 mg)	121	International	26	58	56.7	31.3	8.4	68	78
Horton et al (1998) [16]	156	Glibenclamide+trogliatzone	12	78	Trogliatzone (200 mg)	78	USA	52	60	57.7	32	9.5	80	50
Horton et al (1998) [16]	157	Glibenclamide+trogliatzone	12	76	Trogliatzone (400 mg)	81	USA	52	59	58	32.6	9.5	80	65
Horton et al (1998) [16]	160	Glibenclamide+trogliatzone	12	82	Trogliatzone (600 mg)	78	USA	52	61	56.3	31.9	9.5	80	51
Sulphonylurea+insulin trials														
Camerini-Davalos et al (1994) [23]	61	Glipizide+insulin	5	34	Placebo+insulin	27	USA	156	41	46.8	24.6	10.8	95	88
Goldman et al (1984) [39]	18	Glibenclamide+insulin	5	11	Placebo+insulin	7	USA	24	64	47.4	–	8	64	–
Gums et al (1992) [40]	40	Glibenclamide+insulin	10	20	Placebo+insulin	20	USA	12	63	34	–	10.7	93	87
Gutniak et al (1987) [41]/Karlander et al (1991) [42]	20	Glibenclamide+insulin	10.5	10	Placebo+insulin	10	Sweden	46	–	57.1	–	10.7	93	–

Table 1 (continued)

Study	<i>n</i>	Sulfonylurea	Dose (mg)	<i>n</i>	Comparator	<i>n</i>	Country	Trial length (weeks)	% Male	Mean age	Mean BMI	Mean baseline HbA _{1c} (%)	Mean baseline HbA _{1c} (mmol/mol)	% Completed
Kabadi and Birkenholz (1988) [43]	15	Tolazamide+ insulin	1,000	8	Placebo+insulin	7	USA	12	–	51.9	–	10.8	95	88
Kabadi et al (1995) [44]	10	Glitbenclamide+ insulin	20	10	Placebo+insulin	10	USA	12	100	50	–	–	–	–
Leblanc et al (1990) [45]	9	Glipizide+insulin	15	9	Placebo+insulin	9	France	12	68	42.1	23.5	7.5	58	–
Lewitt et al (1989) [46]	31	Glitbenclamide+ insulin	15	31	Placebo+insulin	31	Australia	12	87	66.5	27.2	9.9	85	94
Lindstrom et al (1999) [47]	15	Glitbenclamide+ insulin	10.5	15	Placebo+insulin	15	Sweden	12	67	59	29.6	–	–	–
Lins et al (1988) [48]	20	Glitbenclamide+ insulin	7	10	Placebo+insulin	10	Sweden	12	50	63.5	–	10.4	90	–
Riddle et al (1992) [49]	21	Glitbenclamide+ insulin	10	11	Placebo+insulin	10	USA	16	–	–	36	–	–	–
Riddle et al (1989) [50]	20	Glitbenclamide+ insulin	10	20	Placebo+insulin	20	USA	16	40	61	–	10.5	91	95
Riddle and Schneider (1998) [51]	145	Glimpeptide+ insulin	16	70	Placebo+insulin	62	USA	24	59	58	33	9.7	83	91
Schade et al (1987) [52]	16	Glitbenclamide+ insulin	20	16	Placebo+insulin	16	USA	16	44	51	41.4	10.6	92	–
Stenman et al (1988) [53]	16	Glitbenclamide+ insulin	15	16	Placebo+insulin	16	Finland	16	87	58	22.9	12.6	114	93
Stuart et al (1997) [54]	18	Glitbenclamide+ insulin	6	18	Placebo+insulin	18	USA	12	28	54	–	7.6	60	69
Ryysy and Yki-Jarvinen (2001) [55]	38	Glitbenclamide+ metformin+ insulin	10.5	21	Metformin+ insulin	17	Finland	52	58	56.5	28.2	9.9	85	–
Dose-comparison trials														
Goldberg et al (1996) [34]	115	Glimpeptide	1	39	Glimpeptide (8 mg)	76	USA	14	62	59.3	29.2	7.8	62	88
Goldberg et al (1996) [34]	115	Glimpeptide	1	39	Glimpeptide (4 mg)	76	USA	14	60	59.3	29.2	7.8	62	88
Rosenstock et al (1996) [35]—qd	171	Glimpeptide	8	88	Glimpeptide (16 mg)	83	USA	14	82	60.5	–	8.1	65	91
Rosenstock et al (1996) [35]—bid	166	Glimpeptide	8	81	Glimpeptide (16 mg)	85	USA	14	86	60.3	–	8.2	66	88
Simonson et al (1997) [11]	134	Glipizide	5	66	Glipizide (20 mg)	68	USA	12	64	58.8	29.4	8.6	70	–
Simonson et al (1997) [11]	83	Glipizide	10	42	Glipizide (15 mg)	41	USA	12	62	57	29.0	8.7	72	–
Simonson et al (1997) [11]	55	Glipizide	40	26	Glipizide (60 mg)	29	USA	12	69	59.3	30.1	8.5	69	–
Stenman et al (1993) [56]	36	Glipizide	10	12	Glipizide (20 mg)	24	Finland	12	54	61	27.5	8.2	66	96
Stenman et al (1993) [56]	36	Glipizide	10	12	Glipizide (40 mg)	24	Finland	12	54	61	27.5	8.2	66	96

Glitbenclamide is known as glyburide in the USA and Canada

Fig. 2 Mean difference in change in HbA_{1c} of sulfonylurea monotherapy treatment vs placebo (boxes) and pooled estimates (diamonds) calculated by the random effects DerSimonian and Laird method. Horizontal bars and diamond widths denote 95% CIs, and box sizes indicate relative weight in the analysis



added on to oral medication. When the data were pooled, HbA_{1c} was 1.62% lower (95% CI 1.00, 2.24; $I^2=94.1\%$), corresponding to 18 mmol/mol, in the sulfonylurea group than in the comparator group (Fig. 3). Because of very high heterogeneity between these trials, meta-regression was carried out to see whether the heterogeneity could be explained by other variables. Trial duration was found to reduce the I^2 statistic to 47%, and no other factor reduced the I^2 by more than 10%. A sensitivity analysis that excluded one trial of three arms [16] in which fewer than 75% of participants completed the trial resulted in a smaller effect size, with HbA_{1c} 0.96% lower (95% CI 0.47, 1.45) corresponding to 11 mmol/mol in the sulfonylurea-treated groups than in the comparator groups. Egger’s test found borderline evidence

for publication bias across all 12 monotherapy and oral combination therapy trials ($p=0.052$), as shown in ESM Fig. 1.

Trials of sulfonylurea in combination with insulin Seventeen trials (representing 513 participants) of sulfonylurea as an add-on to insulin were included in the meta-analysis (Fig. 4). HbA_{1c} level was significantly lower in sulfonylurea groups compared with placebo in combination with insulin (0.46% lower; 95% CI 0.24, 0.69, corresponding to 6 mmol/mol; $I^2=43.6\%$). In meta-regression, adjusting for type of sulfonylurea and duration of diabetes reduced the heterogeneity ($I^2=0.0\%$). Only one trial had more than 100 participants (effect size 0.1%, 95% CI -0.21, 0.41%). Egger’s

Fig. 3 Mean difference in change in HbA_{1c} of sulfonylurea treatment added on to another oral treatment vs placebo+other treatment (boxes) and pooled estimates (diamonds) calculated by the random effects DerSimonian and Laird method. Horizontal bars and diamond widths denote 95% CIs, and box sizes indicate relative weight in the analysis. Doses in parentheses are doses of troglitazone, the background therapy

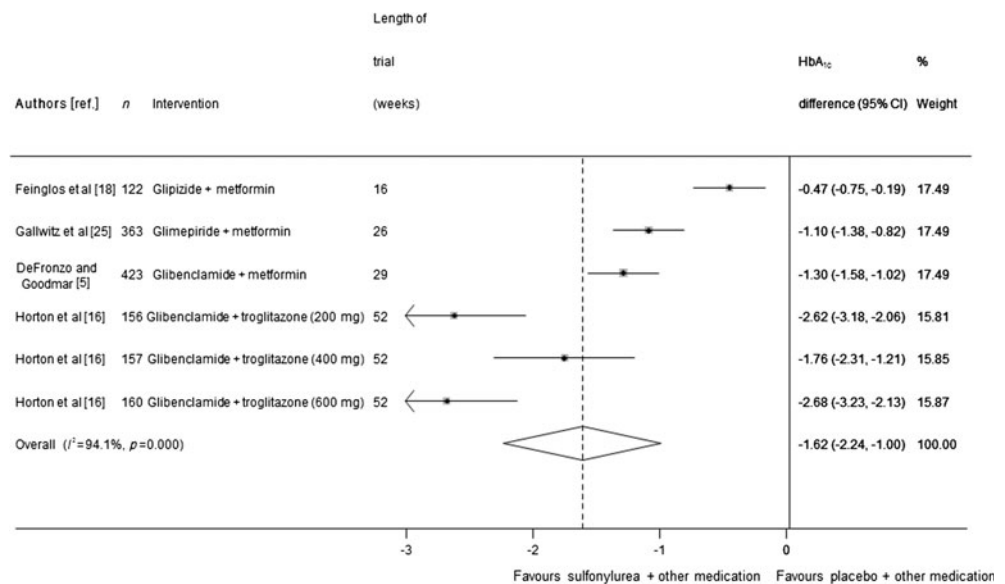
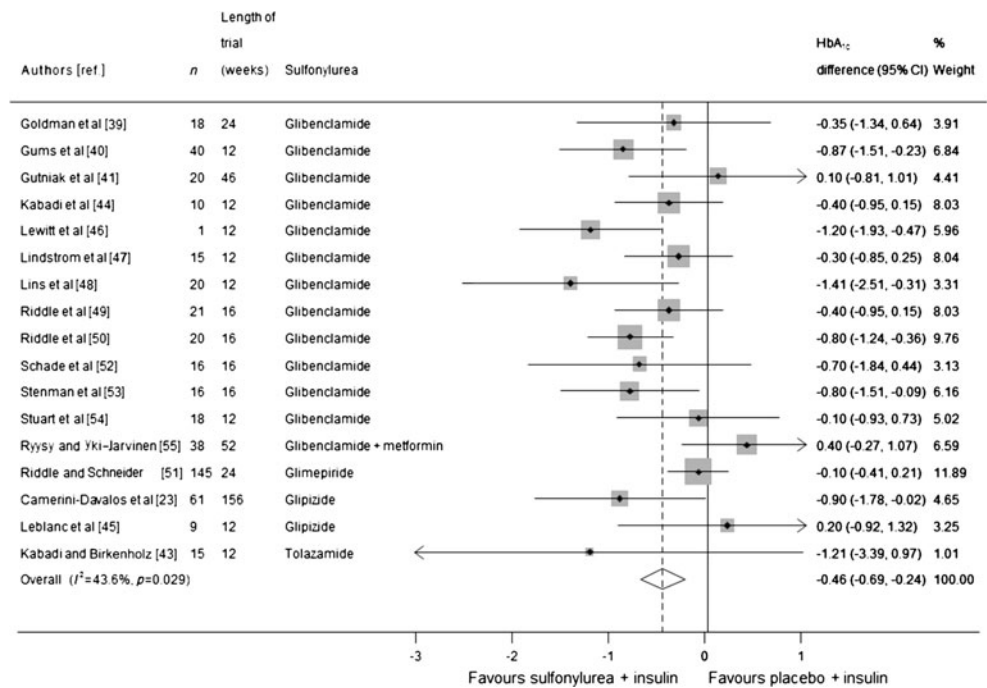


Fig. 4 Mean difference in change in HbA_{1c} of sulfonylurea treatment added on to insulin treatment vs insulin+placebo (*boxes*) and pooled estimates (*diamonds*) calculated by the random effects DerSimonian and Laird method. Horizontal bars and diamond widths denote 95% CIs, and box sizes indicate relative weight in the analysis



test found no evidence for publication bias across the insulin combination therapy trials ($p=0.29$), as shown in ESM Fig. 1.

Insulin dose Thirteen of the 17 sulfonylurea and insulin trials reported the insulin dose. The dose of insulin required at the end of the trial was significantly lower in the sulfonylurea arm, by 0.55 SD (95% CI 0.25, 0.84), than in the comparator arm across all trials (ESM Fig. 2). In trials of type 2 diabetes, the insulin doses in the sulfonylurea-treated group were significantly lower, by 0.70 SD (95% CI 0.37, 1.02), compared with insulin-only arm. Insulin dose in four trials of 345 patients with type 1 diabetes did not significantly differ between the treatment and comparator arms (standard mean difference -0.16 , 95% CI -0.57 , 0.25).

Dose-comparison trials Four trials that conducted a head-to-head analysis of at least two different sulfonylurea doses were included in the dose-comparison meta-analysis. Each of the trials included in the analysis included three or more different sulfonylurea doses, resulting in nine comparisons (911 participants). Pooling of the results (Fig. 5) found no statistically significant evidence that higher doses of sulfonylurea reduce HbA_{1c} more than lower doses (pooled mean difference 0.05, 95% CI -0.17 , 0.26). Some trials used doses of sulfonylurea that would be considered high in both arms (according to the British National Formulary [17]). We therefore conducted a sensitivity analysis excluding these trials and obtained similar results: mean difference for glimepiride 0.35 (95% CI -0.05 , 0.75), and for glipizide -0.10 (CI -0.58 , 0.39).

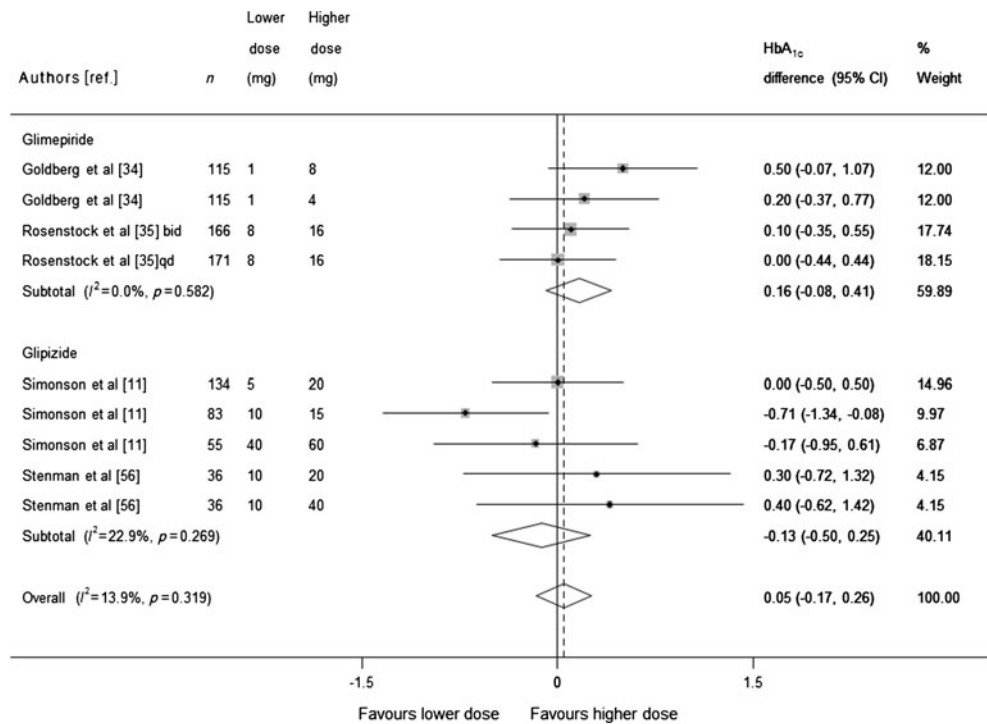
Adverse events Figure 6 shows the adverse events, serious adverse events and hypoglycaemic events as reported by the

trials. Seven trials reported the total number of adverse events, or the number of patients who experienced an adverse event. Adverse events were defined as any event that occurred after the initiation of treatment. There was no significant difference in the number of adverse events in the sulfonylurea-treated group compared with the comparator groups (RR 1.10, 95% CI 0.94, 1.29), and a non-significant increase in the number of serious adverse events (reported in five trials) in the sulfonylurea-treated groups (RR 1.66, 95% CI 0.78, 3.50). Ten trials reported the number of mild-to-moderate hypoglycaemic episodes (defined as either patient-reported symptoms or blood glucose levels below a threshold of 3.1–3.3 mmol/l [55–60 mg/dl] for two trials), and there were significantly more events in the sulfonylurea-treated group than in the comparator groups (RR 2.41, 95% CI 1.41, 4.10). None of the trials reported any severe hypoglycaemic events requiring third-party assistance. There was no significant difference in the number of patients who withdrew from the trials due to adverse events (reported in eight trials) between the sulfonylurea-treated and comparator arms (RR 0.88, 95% CI 0.56, 1.38; data not shown).

Change in body weight Twelve trials reported a change in body weight over the course of the trial. Pooling the results gave a mean increase in weight of 2.31 kg (95% CI 1.31, 3.32) in the sulfonylurea-treated groups compared with comparator groups (results not shown).

Baseline HbA_{1c} To explore how baseline HbA_{1c} levels could be associated with the change in HbA_{1c}, we plotted effect size against the mean baseline HbA_{1c} for each trial

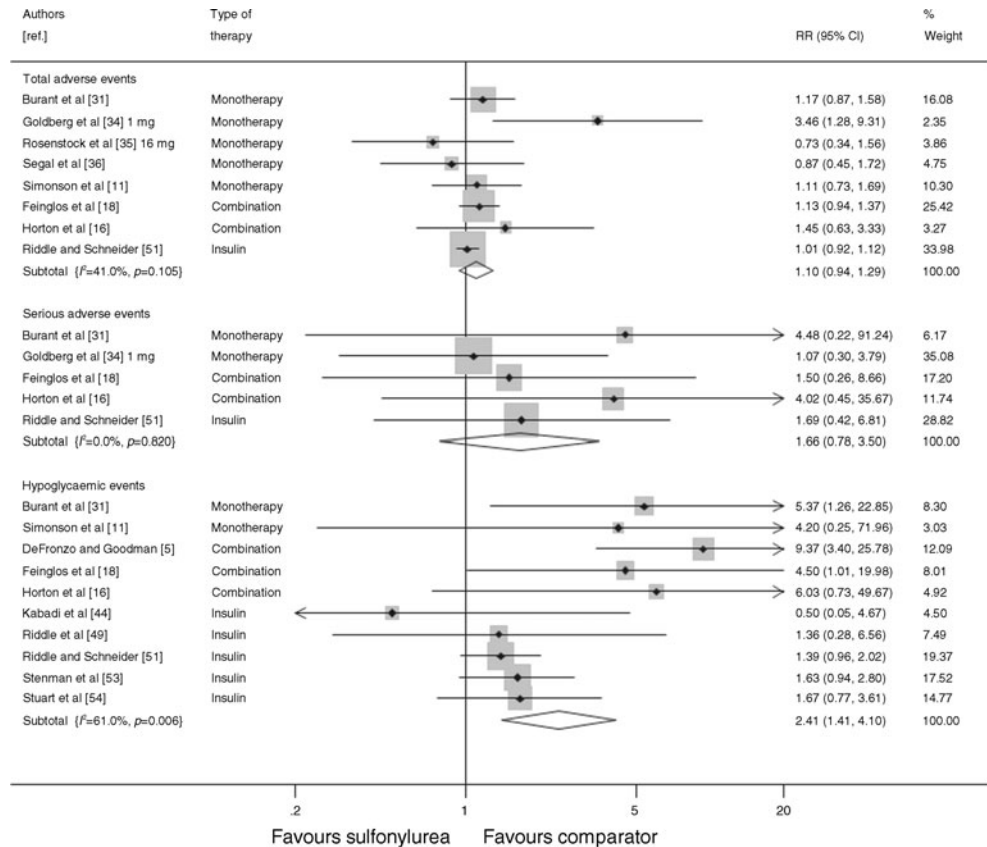
Fig. 5 Mean difference in change in HbA_{1c} of higher sulfonylurea dose vs lower sulfonylurea dose (boxes) and pooled estimates (diamonds) calculated by the random effects DerSimonian and Laird method, stratified by sulfonylurea type. Horizontal bars and diamond widths denote 95% CIs, and box sizes indicate relative weight in the analysis. qd, once daily, bid, twice a day



(Fig. 7). Although the reduction in HbA_{1c} in the intervention group appeared to be greater in trials with a higher mean baseline HbA_{1c}, a similar pattern was seen within the

control groups. The difference in HbA_{1c} reduction between the intervention and control group did not appear to be related to mean baseline HbA_{1c}.

Fig. 6 Relative risk of total adverse events, serious adverse events and hypoglycaemic events during trials of sulfonylurea treatment vs comparator (boxes) and pooled estimates across trials (diamonds) calculated by the fixed effects inverse variance (I–V) method in patients with diabetes. Horizontal bars and diamond widths denote 95% CIs, and box sizes indicate relative weight in the I–V analysis



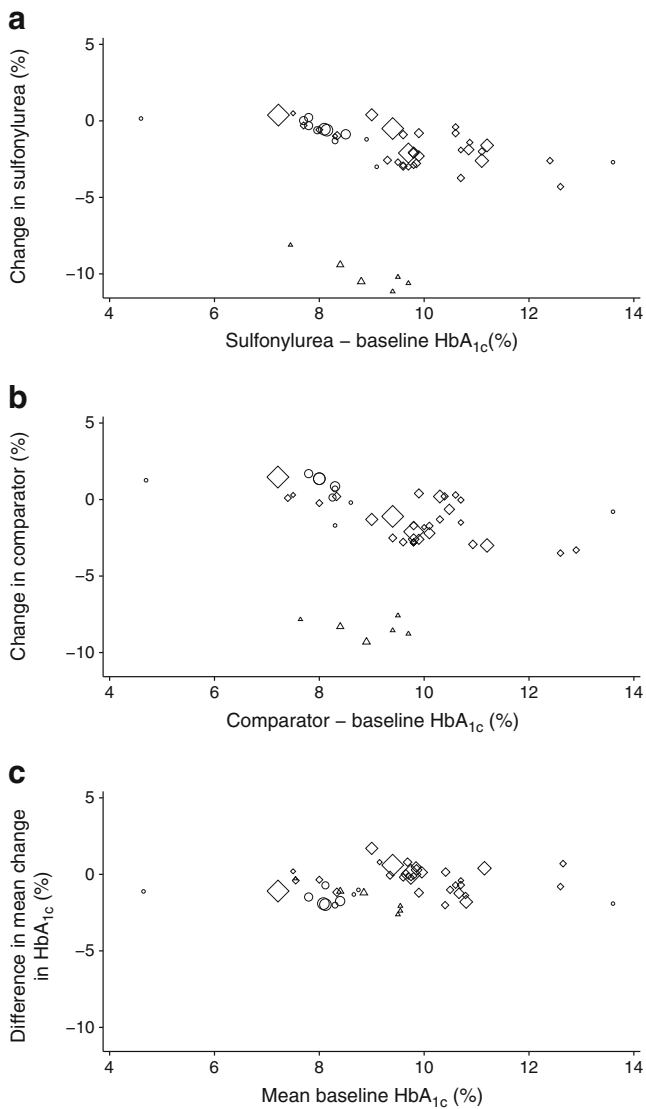


Fig. 7 (a) Sulfonylurea group–change vs baseline HbA_{1c}. (b) Comparator group–change vs baseline HbA_{1c}. (c) Difference in HbA_{1c} vs mean baseline HbA_{1c} by treatment type. Circles represent monotherapy trials, triangles represent oral therapy combination trials and diamonds represent insulin combination trials. Marker size is proportional to trial size

Discussion

This systematic review of double-blinded, randomised controlled trials found that sulfonylurea monotherapy reduced HbA_{1c} by an average of 1.5% (16 mmol/mol), and sulfonylurea in combination other oral medications reduced HbA_{1c} by 1.6% (18 mmol/mol) compared with placebo groups. Sulfonylurea treatment in combination with insulin resulted in a smaller reduction in HbA_{1c}, with the greatest reductions seen in trials of glibenclamide (HbA_{1c} 0.6% or 7 mmol/mol lower), than insulin treatment alone and resulted in use of a lower insulin dose for these patients, consistent with other reports [9]. In our analysis of dose-comparison trials for two

sulfonylurea drugs, glimepiride and glipizide, we were unable to demonstrate that higher doses significantly lowered HbA_{1c} more than lower doses. We found no evidence that sulfonylurea treatment resulted in an increase in the total number of adverse events, but we did find that it increased the number of hypoglycaemic events.

More trials have been identified in this review than in any previous systematic review, which can be partly explained by broader inclusion criteria: we included trials of all sizes in our review, did not restrict the review to English-language papers and included patients with type 1 diabetes. We specifically included trials in which the sulfonylurea dose was kept constant, which has allowed us to examine the dose–effect relationship; this is the first time head-to-head dose comparison trials have been combined in a meta-analysis.

The reduction in HbA_{1c} from sulfonylurea treatment found in this review is greater than the effect size observed in another systematic review [6] and within the range suggested in an American Diabetes Association consensus report [4]. Of six trials included in the previous systematic review [6], only two of these were eligible for inclusion in our review [5, 18] because of protocol-permitted sulfonylurea dose changes in the other four trials. Newer agents for blood glucose control have been shown in a recent review to reduce HbA_{1c} by up to 1% [19]. Our results suggest that sulfonylureas are at least as effective as these newer agents in lowering HbA_{1c}; in addition to this, they are less expensive [2]. We have found that sulfonylurea treatment may result in more hypoglycaemic episodes and an increase in body weight; this is consistent with known effects of these medications [20, 21]. We observed no relationship between effect size and baseline HbA_{1c} when examining the difference between the reduction in the active treatment and control groups in the trials (Fig. 7c). Although the reduction within the trial intervention arms was greater for those trials with a higher baseline HbA_{1c} we also observed a reduction in the trial control arms, perhaps attributable to regression to the mean [22]. A previous systematic review that found an association between response and baseline HbA_{1c} [10] considered only trial arms that involved an active glucose-lowering therapy.

This review has several limitations. First, many of the trials included were relatively small (fewer than 100 participants), which may have led to publication bias, particularly in the insulin trials. Second, we observed moderate heterogeneity in the monotherapy and insulin trials (I^2 approximately 40%), and heterogeneity was high ($I^2 > 90%$) in the oral combination trials. Meta-regression suggests that this may be largely attributable to a differing trial duration, with greater HbA_{1c} lowering in shorter trials, but meta-regression results can be subject to confounding and should not be overinterpreted. Third, our analysis is of glycaemic control rather than hard outcomes, although our marker of

glycaemia, HbA_{1c}, has a well-recognised association with at least the microvascular complications of diabetes. Finally, follow-up times for the trials included were short: only six trials followed up patients for longer than 6 months and one trial for longer than a year [23], meaning that we have only been able to assess short-term outcomes. Furthermore, the trials identified for inclusion in this review were relatively old, only three trials having been published in the past decade [18, 24, 25]. This reflects the fact that sulfonylureas are established in the treatment of diabetes.

We have been unable to demonstrate a dose-comparison effect, but this result needs to be interpreted with caution as our analysis only included four trials with two different sulfonylureas; there may be a therapeutic range within which an increase in dose does further reduce the HbA_{1c}, which was not possible to examine in this review. Our review has focused on changes in glycaemic control and short-term adverse events, and therefore cannot contribute to the debate about the possible advantages of newer sulfonylureas [26] over the sulfonylureas used in earlier trials, for which the findings of University Group Program [27] and the United Kingdom Prospective Diabetes Study [28] have suggested an association with adverse effects. Instead, we have sought to quantify the glycaemic lowering of sulfonylureas in order to provide a context for understanding similar reviews of newer oral glucose-lowering agents.

Many of the trials were of short duration, which may be because we only included trials of a fixed dose of sulfonylurea. This has enabled us to undertake a dose-comparison analysis and to interpret each trial as the effect for dosage used. We restricted inclusion to trials of fixed-dose sulfonylurea, which facilitated interpretation including a dose-comparison analysis; however, the rates of hypoglycaemia in trials using fixed-dose protocols may not be typical of rates in clinical practice, in which doses can be adjusted over time. Because of the short trial duration, we are unable to comment on the expected duration of effect of sulfonylurea treatment [29]. We have included only double-blinded randomised controlled trials in our review to minimise bias, although most of the trials included did not report details of the method of randomisation or allocation concealment. Exclusion of a single trial with a high attrition rate [16] from the oral combination trials resulted in a reduced effect size from 1.6% to 1% lower HbA_{1c} in the treatment group. The exact size of the effect estimate in this group therefore needs to be interpreted with caution. We could not find any evidence for reporting bias for the primary outcome, HbA_{1c}. However reporting of adverse events between trials was inconsistent, so these results may potentially be affected by reporting bias [14].

We have demonstrated in this review that prescribing sulfonylureas either alone or added on to another oral medication will effectively reduce HbA_{1c} by around 1.5%, but

we found no evidence that higher sulfonylurea doses result in a further reduction in HbA_{1c}, although this may be an effect of the dose ranges used in the trials. The effect of sulfonylurea treatment on patients already taking insulin is more modest, although treatment does result in a significant reduction in both HbA_{1c} and insulin dose. As there is no evidence for increased effectiveness at higher doses, and as sulfonylureas are associated with adverse events such as hypoglycaemic episodes, low-dose sulfonylureas may be preferred in many cases without titration to maximal dose.

Acknowledgements Thanks go to C. Bankhead, University of Oxford for assisting where there were discrepancies in inclusion criteria. The views expressed by the authors may not necessarily reflect the views or policies of the National Institute for Health Research School.

Funding This research was funded by NHS Diabetes. AJF receives support from the Oxford NIHR Biomedical Research Centre.

Duality of interest The authors declare that there is no duality of interest associated with this manuscript.

Contribution statement JAH contributed to the design, analysis and interpretation of the data, drafted the article, undertook revisions and approved the final version. AJF contributed to the conception, design, analysis and interpretation of the data, critical revision of article, clinical input and final approval. AD contributed to the design and analysis of the data, critical revision and final approval. TWCL contributed to analysis of the data, critical revision and final approval. RJS contributed to the conception, design, analysis and interpretation of the data, critical revision and final approval of article.

Open Access This article is distributed under the terms of the Creative Commons Attribution Noncommercial License which permits any noncommercial use, distribution, and reproduction in any medium, provided the original author(s) and the source are credited.

References

1. NICE (2008) CG66 type 2 diabetes: full guideline. In: NICE clinical guideline 66. www.nice.org.uk/nicemedia/pdf/CG66NICEGuideline.pdf
2. Desai NR, Shrank WH, Fischer MA et al (2012) Patterns of medication initiation in newly diagnosed diabetes mellitus: quality and cost implications. *Am J Med* 125(302):e301–e307
3. Ashcroft F (1996) Mechanisms of the glycaemic effects of sulfonylureas. *Horm Metab Res* 28:456–463
4. Nathan DM, Buse JB, Davidson MB et al (2009) Medical management of hyperglycaemia in type 2 diabetes mellitus: a consensus algorithm for the initiation and adjustment of therapy: a consensus statement from the American Diabetes Association and the European Association for the Study of Diabetes. *Diabetologia* 52:17–30
5. DeFronzo RA, Goodman AM (1995) Efficacy of metformin in patients with non-insulin-dependent diabetes mellitus. The Multicenter Metformin Study Group. *N Engl J Med* 333:541–549
6. Sherifali D, Nerenberg K, Pullenayegum E, Cheng JE, Gerstein HC (2010) The effect of oral antidiabetic agents on A1C levels: a systematic review and meta-analysis. *Diabetes Care* 33:1859–1864

7. Gangji AS, Cukierman T, Gerstein HC, Goldsmith CH, Clase CM (2007) A systematic review and meta-analysis of hypoglycemia and cardiovascular events: a comparison of glyburide with other secretagogues and with insulin. *Diabetes Care* 30:389–394
8. Peters AL, Davidson MB (1991) Insulin plus a sulfonylurea agent for treating type 2 diabetes. *Ann Intern Med* 115:45–53
9. Pugh JA, Wagner ML, Sawyer J, Ramirez G, Tuley M, Friedberg SJ (1992) Is combination sulfonylurea and insulin therapy useful in NIDDM patients? A metaanalysis. *Diabetes Care* 15:953–959
10. DeFronzo RA, Stonehouse AH, Han J, Wintle ME (2010) Relationship of baseline HbA_{1c} and efficacy of current glucose-lowering therapies: a meta-analysis of randomized clinical trials. *Diabet Med* 27:309–317
11. Simonson DC, Kourides IA, Feinglos M, Shamoon H, Fischette CT (1997) Efficacy, safety, and dose–response characteristics of glipizide gastrointestinal therapeutic system on glycemic control and insulin secretion in NIDDM: Results of two multicenter, randomized, placebo-controlled clinical trials. *Diabetes Care* 20:597–606
12. Higgins JP, Thompson SG (2002) Quantifying heterogeneity in a meta-analysis. *Stat Med* 21:1539–1558
13. Egger M, Davey Smith G, Schneider M, Minder C (1997) Bias in meta-analysis detected by a simple, graphical test. *BMJ* 315:629–634
14. Higgins JPT, Green S (eds) (2005) *Cochrane handbook for systematic reviews of interventions 4.2.4 [updated March 2005]*. In: *The Cochrane Library* (Issue 2). Wiley, Chichester
15. Pasmantier R, Chaiken RL, Hirsch SR, Lebovitz HE (1990) Metabolic effects of combination glipizide and human proinsulin treatment in NIDDM. *Diabetes Care* 13:42–46
16. Horton ES, Whitehouse F, Ghazzi MN, Venable TC, Whitcomb RW (1998) Troglitazone in combination with sulfonylurea restores glycemic control in patients with type 2 diabetes. The Troglitazone Study Group. *Diabetes Care* 21:1462–1469
17. British National Formulary (2010) *BMJ Group and Pharmaceutical Press*, London
18. Feinglos M, Dailey G, Cefalu W et al (2005) Effect on glycemic control of the addition of 2.5 mg glipizide GITS to metformin in patients with T2DM. *Diabetes Res Clin Pract* 68:167–175
19. Waugh N, Cummins E, Royle P et al (2010) Newer agents for blood glucose control in type 2 diabetes: systematic review and economic evaluation. *Health Tech Assess* 14:1–248
20. Melander A, Lebovitz HE, Faber OK (1990) Sulfonylureas. Why, which, and how? *Diabetes Care* 13(Suppl 3):18–25
21. Campbell IW (2010) Comparing the actions of older and newer therapies on body weight: to what extent should these effects guide the selection of antidiabetic therapy? *Int J Clin Pract* 64:791–801
22. Bland JM, Altman DG (1994) *Statistics notes: some examples of regression towards the mean*. *BMJ* 309:780
23. Camerini-Davalos RA, Bloodworth J, Velasco CA, Reddi AS (1994) Effect of insulin-glipizide combination on skeletal muscle capillary basement membrane width in diabetic patients. *Clin Ther* 16:952–961
24. Fischer S, Patzak A, Reitzsch H et al (2003) Influence of treatment with acarbose or glibenclamide on insulin sensitivity in type 2 diabetic patients. *Diabetes Obes Metabol* 5:38–44
25. Gallwitz B, Vaag A, Falahati A, Madsbad S (2010) Adding liraglutide to oral antidiabetic drug therapy: onset of treatment effects over time. *Int J Clin Pract* 64:267–276
26. Zeller M, Danchin N, Simon D et al (2010) Impact of type of preadmission sulfonylureas on mortality and cardiovascular outcomes in diabetic patients with acute myocardial infarction. *J Clin Endocrinol Metab* 95:4993–5002
27. Goldner MG, Knatterud GL, Prout TE (1971) Effects of hypoglycemic agents on vascular complications in patients with adult-onset diabetes. 3. Clinical implications of UGDP results. *JAMA* 218:1400–1410
28. Adler AI, Stratton IM, Neil HA et al (2000) Association of systolic blood pressure with macrovascular and microvascular complications of type 2 diabetes (UKPDS 36): prospective observational study. *BMJ* 321:412–419
29. Kahn SE, Haffner SM, Heise MA et al (2006) Glycemic durability of rosiglitazone, metformin, or glyburide monotherapy. *N Engl J Med* 355:2427–2443
30. Banerji MA, Chaiken RL, Lebovitz HE (1995) Prolongation of near-normoglycemic remission in black NIDDM subjects with chronic low-dose sulfonylurea treatment. *Diabetes* 44:466–470
31. Burant CF, Viswanathan P, Marciniak J et al (2012) TAK-875 versus placebo or glimepiride in type 2 diabetes mellitus: a phase 2, randomised, double-blind, placebo-controlled trial. *Lancet* 379:1403–1411
32. Damsgaard EM, Faber O, Froland A, Iversen S (1982) Fasting blood glucose, glycohaemoglobin and urinary glucose excretion in non-insulin-dependent patients with diabetes mellitus (NIDDM). *Ugeskrift for Laeger* 144:2342–2344 [article in Danish]
33. Ebeling P, Teppo AM, Koistinen HA, Koivisto VA (2001) Concentration of the complement activation product, acylation-stimulating protein, is related to C-reactive protein in patients with type 2 diabetes. *Metab Clin Exp* 50:283–287
34. Goldberg RB, Holvey SM, Schneider J (1996) A dose–response study of glimepiride in patients with NIDDM who have previously received sulfonylurea agents. The Glimepiride Protocol #201 Study Group. *Diabetes Care* 19:849–856
35. Rosenstock J, Samols E, Muchmore DB, Schneider J (1996) Glimepiride, a new once-daily sulfonylurea. A double-blind placebo-controlled study of NIDDM patients. Glimepiride Study Group. *Diabetes Care* 19:1194–1199
36. Segal P, Feig PU, Schemthaler G et al (1997) The efficacy and safety of miglitol therapy compared with glibenclamide in patients with NIDDM inadequately controlled by diet alone. *Diabetes Care* 20:687–691
37. Nauck M, Frid A, Hermansen K et al (2009) Efficacy and safety comparison of liraglutide, glimepiride, and placebo, all in combination with metformin, in type 2 diabetes: the LEAD (liraglutide effect and action in diabetes)-2 study. *Diabetes Care* 32:84–90
38. Jendle J, Nauck MA, Matthews DR et al (2009) Weight loss with liraglutide, a once-daily human glucagon-like peptide-1 analogue for type 2 diabetes treatment as monotherapy or added to metformin, is primarily as a result of a reduction in fat tissue. *Diabetes Obes Metabol* 11:1163–1172
39. Goldman J, Tamayo RC, Whitehouse FW, Kahkonen DM (1984) Effect of glyburide on metabolic control and insulin binding in insulin-dependent diabetes mellitus. *Diabetes Care* 7:106–112
40. Gums JG, Curry J, de Oca GM, Skluth HA, Reynolds LR (1992) Treatment of type I diabetes with a combination of glyburide and insulin. *Ann Pharmacother* 26:757–762
41. Gutniak M, Karlander SG, Efendic S (1987) Glyburide decreases insulin requirement, increases beta-cell response to mixed meal, and does not affect insulin sensitivity: effects of short- and long-term combined treatment in secondary failure to sulfonylurea. *Diabetes Care* 10:545–554
42. Karlander SG, Gutniak MK, Efendic S (1991) Effects of combination therapy with glyburide and insulin on serum lipid levels in NIDDM patients with secondary sulfonylurea failure. *Diabetes Care* 14:963–967
43. Kabadi UM, Birkenholz MR (1988) Improved metabolic control in insulin-dependent diabetes mellitus with insulin and tolazamide. *Arch Intern Med* 148:1745–1749
44. Kabadi UM, McCoy S, Birkenholz M, Kabadi M (1995) More uniform diurnal blood glucose control and a reduction in daily insulin dosage on addition of glibenclamide to insulin in type 1 diabetes mellitus: role of enhanced insulin sensitivity. *Diab Med J Brit Diabet Assoc*: 880–884

45. Leblanc H, Thote A, Chatellier G, Passa P (1990) Effect of glipizide on glycemic control and peripheral insulin sensitivity in type 1 diabetics. *Diabete et Metabolisme* 16:93–97
46. Lewitt MS, Yu VK, Rennie GC et al (1989) Effects of combined insulin-sulfonylurea therapy in type II patients. *Diabetes Care* 12:379–383
47. Lindstrom T, Nystrom FH, Olsson AG, Ottosson AM, Arnqvist HJ (1999) The lipoprotein profile differs during insulin treatment alone and combination therapy with insulin and sulphonylureas in patients with Type 2 diabetes mellitus. *Diabet Med* 16:820–826
48. Lins PE, Lundblad S, Persson-Trotzig E, Adamson U (1988) Glibenclamide improves the response to insulin treatment in non-insulin-dependent diabetics with second failure to sulfonylurea therapy. *Acta Med Scand* 223:171–179
49. Riddle M, Hart J, Bingham P, Garrison C, McDaniel P (1992) Combined therapy for obese type 2 diabetes: supertime mixed insulin with daytime sulfonylurea. *Am J Med Sci* 303:151–156
50. Riddle MC, Hart JS, Bouma DJ, Phillipson BE, Youker G (1989) Efficacy of bedtime NPH insulin with daytime sulfonylurea for subpopulation of type II diabetic subjects. *Diabetes Care* 12:623–629
51. Riddle MC, Schneider J (1998) Beginning insulin treatment of obese patients with evening 70/30 insulin plus glimepiride versus insulin alone. Glimepiride Combination Group. *Diabetes Care* 21:1052–1057
52. Schade DS, Mitchell WJ, Griego G (1987) Addition of sulfonylurea to insulin treatment in poorly controlled type II diabetes. A double-blind, randomized clinical trial. *JAMA* 257:2441–2445
53. Stenman S, Groop PH, Saloranta C, Totterman KJ, Fyhrqvist F, Groop L (1988) Effects of the combination of insulin and glibenclamide in type 2 (non-insulin-dependent) diabetic patients with secondary failure to oral hypoglycaemic agents. *Diabetologia* 31:206–213
54. Stuart CA, Gilkison CR, Carlson RF (1997) Effect of adding a sulfonylurea in patients with non-insulin-dependent diabetes mellitus previously well controlled with insulin. *Endocr Pract* 3:344–348
55. Ryysy L, Yki-Jarvinen H (2001) Improvement of glycemic control by 1 year of insulin therapy leads to a sustained decrease in sE-selectin concentrations in type 2 diabetes. *Diabetes Care* 24:549–554
56. Stenman S, Melander A, Groop PH, Groop LC (1993) What is the benefit of increasing the sulfonylurea dose? *Ann Intern Med* 118:169–172