

The minimal length of a Lagrangian cobordism between Legendrians

Joshua M. Sabloff¹ · Lisa Traynor²

Published online: 20 October 2016
© Springer International Publishing 2016

Abstract To investigate the rigidity and flexibility of Lagrangian cobordisms between Legendrian submanifolds, we study the minimal length of such a cobordism, which is a 1-dimensional measurement of the non-cylindrical portion of the cobordism. Our primary tool is a set of real-valued capacities for a Legendrian submanifold, which are derived from a filtered version of Legendrian contact homology. Relationships between capacities of Legendrians at the ends of a Lagrangian cobordism yield lower bounds on the length of the cobordism. We apply the capacities to Lagrangian cobordisms realizing vertical dilations (which may be arbitrarily short) and contractions (whose lengths are bounded below). We also study the interaction between length and the linking of multiple cobordisms as well as the lengths of cobordisms derived from non-trivial loops of Legendrian isotopies.

Mathematics Subject Classification 53D12

JS is partially supported by NSF Grant DMS-1406093. LT gratefully acknowledges the hospitality of the Institute for Advanced Study in Princeton and support at IAS from The Fund for Mathematics during a portion of this work.

✉ Joshua M. Sabloff
jsabloff@haverford.edu
Lisa Traynor
ltraynor@brynmawr.edu

¹ Haverford College, Haverford, PA 19041, USA

² Bryn Mawr College, Bryn Mawr, PA 19010, USA

1 Introduction

1.1 Context and motivation

This paper introduces and addresses new quantitative questions about Lagrangian cobordisms between Legendrian submanifolds. The cobordisms under consideration are exact, orientable Lagrangian submanifolds of the symplectization $\mathbb{R} \times Y$ of a contact manifold Y that in the complement of $[s_-, s_+] \times Y$ coincide with cylinders over Legendrians Λ_{\pm} . This type of Lagrangian cobordism has come under increasing scrutiny in recent years, especially as a part of the TQFT package for a relative version of symplectic field theory (SFT); see, among others, [5, 11, 13, 14, 19].

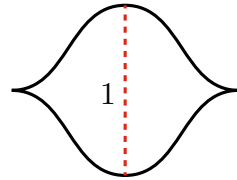
Prior research into Lagrangian cobordisms investigated *qualitative* questions: fixing the Legendrians at the ends, when does such a cobordism exist? What restrictions are there on the topology of such a cobordism? Is the Lagrangian cobordism relation a partial order on the set of Legendrian submanifolds (up to isotopy)?

For another viewpoint on the rigidity and flexibility of Lagrangian cobordisms, we introduce a new *quantitative* question: given two Legendrians, what is the shortest length of all Lagrangian cobordisms between them? Here, the length of a Lagrangian cobordism L , $\ell(L)$, is the infimum of the lengths of the intervals $[s_-, s_+]$ such that the Lagrangian is cylindrical in the complement of $[s_-, s_+] \times Y$. In Sect. 1.2, we will describe examples that show that for some pairs of Legendrian submanifolds, Lagrangian cobordisms are flexible in the sense that they can be arbitrarily short; for other pairs of Legendrians submanifolds, Lagrangian cobordisms are rigid in that there is a positive lower bound to their length.

Rigidity of length brings to mind non-squeezing and more general symplectic embedding phenomena. That is, even when topological and volume obstructions to embedding one symplectic domain into another vanish, the embedding may still be impossible. The original example was of embedding a ball into a cylinder as in [29], though other classic problems involve ellipsoids and polydisks, and, more generally, embeddings of one Liouville domain into another as in [30]. In the last case, an embedding induces a symplectic cobordism between contact boundaries of the domains in question, and the question of measuring Lagrangian cobordisms between Legendrians can be thought of as a relative version of this question. The notion of length, however, does not seem to have an analogue in the non-relative case. In fact, an interesting feature of the length is that it arises from a 1-dimensional measurement rather than the usual 2-dimensional measurements that appear in non-squeezing theorems, even in the case of Lagrangian cobordisms [39].

There is one more aspect of our results that is reminiscent of non-squeezing: Gromov's use of pseudo-holomorphic curves has been refined and given algebraic structure in several contexts, the most relevant for our purposes being Legendrian contact homology (LCH) and SFT [21]. Using a framework reminiscent of, though independent of, Hutchings' definition of Embedded Contact Homology capacities [30], our main tool for measuring rigidity in the length of a Lagrangian cobordism is a notion of a capacity for a Legendrian submanifold, which is based on a filtered version of LCH, and which we will begin to describe in Sect. 1.3, below.

Fig. 1 A front diagram of the Legendrian unknot $U(1)$, which has a single Reeb chord of height 1. By spinning this front around its central axis, one obtains similar “flying saucers” $U^n(1) \subset \mathbb{R}^{2n+1}$



1.2 Results

To build intuition for the length of a Lagrangian cobordism, we introduce a series of examples, each of which will be explored in more detail in Sects. 3 and 6. First, consider the Legendrian unknot $U(1) \subset \mathbb{R}^3$ depicted in Fig. 1; for this knot, the unique Reeb chord has height 1. Let $U(v)$ denote the image of $U(1)$ under the contact diffeomorphism $(x, y, z) \mapsto (x, vy, vz)$. Through spinning constructions, we can produce n -dimensional flying saucers $U^n(v)$.

Theorem 1.1 *For $v \geq 1$, there exist arbitrarily short Lagrangian cobordisms from $\Lambda_- = U^n(1)$ to $\Lambda_+ = U^n(v)$. For $v < 1$, any such cobordism must have length at least $\ln \frac{1}{v}$, and the bound is the best possible.*

This theorem points to some initial intuition about the length of a cobordism: “expanding” a Legendrian can be done with a cobordism of arbitrarily short length, while “shrinking” a Legendrian requires nontrivial length. In fact, the lower bound in Theorem 1.1 can be generalized to give a lower bound to the length of a Lagrangian cobordism in terms of the lengths of Reeb chords of Λ_- and Λ_+ ; see Proposition 6.1.

Second, it is easy to show that a vertical shift of a Legendrian unknot—or any Legendrian submanifold of J^1M —can be achieved by arbitrarily short Lagrangian cobordisms; see Corollary 3.4. On the other hand, simultaneous shifts of two components cannot necessarily be achieved by disjoint Lagrangian cobordisms of arbitrarily short length. For example, if $H(v)$ is the Hopf link of Legendrian unknots $U(1)$ with the top component shifted up by $0 < v < 1$ from the bottom component as in Fig. 2, then we obtain:

Theorem 1.2 *A Lagrangian cobordism from $\Lambda_- = H(u)$ to $\Lambda_+ = H(v)$ composed of two disjoint Lagrangian cylinders that join the upper (resp. lower) component of $H(u)$ to the upper (resp. lower) component of $H(v)$ has length at least*

- $\ln \frac{1-u}{1-v}$ if $u \leq v$ and
- $\ln \frac{u}{v}$ if $u \geq v$,

and the bounds are the best possible.

See Fig. 2b for a visualization of these bounds for $u = \frac{1}{2}$. In fact, this statement holds for n -dimensional Hopf links; see Theorem 6.3.

Theorem 1.2 hints at a boundary-value problem for Lagrangian cobordisms. Generalizing the notation for the Hopf link, let $H(v_1, \dots, v_k)$ denote the $(k + 1)$ -copy of $U(1)$, with components numbered from 0 to k , with the i^{th} component shifted up by a height v_i from the bottom, and with the shifts satisfying $0 < v_1 < \dots < v_k < 1$. We call $H\left(\frac{1}{k+1}, \dots, \frac{k}{k+1}\right)$ the **evenly shifted $(k + 1)$ -copy** of $U(1)$.

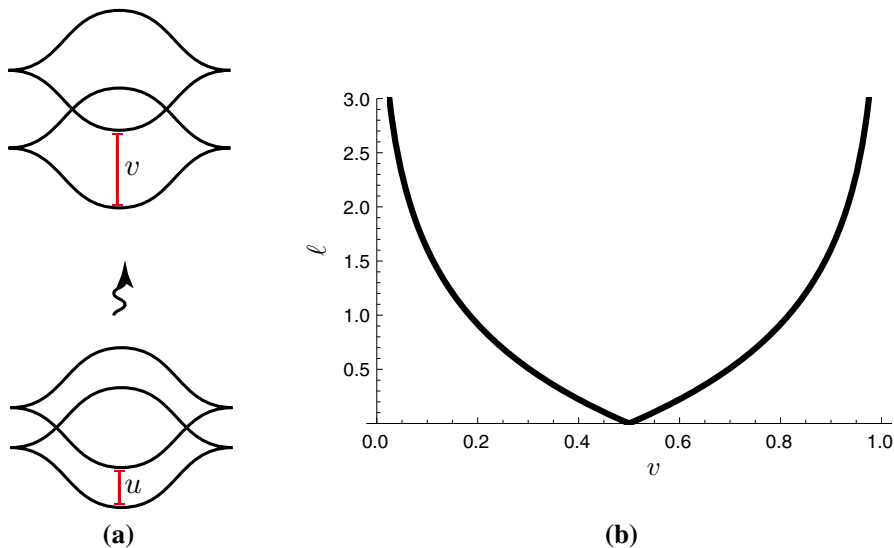


Fig. 2 a A schematic picture of a Lagrangian cobordism between $\Lambda_- = H(u)$ and $\Lambda_+ = H(v)$, and b a plot of the lower bounds on the length of such a cobordism for $u = \frac{1}{2}$ and $0 < v < 1$

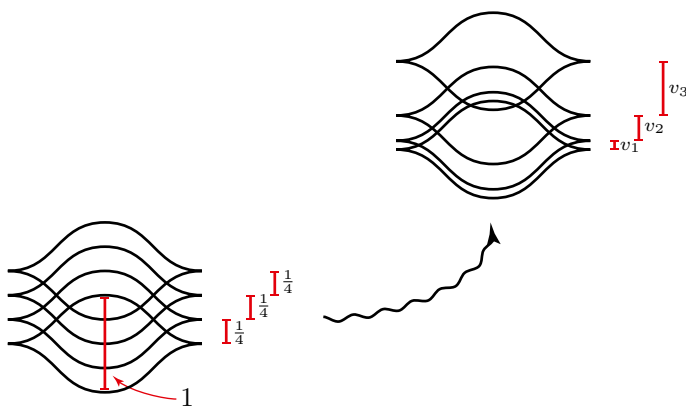


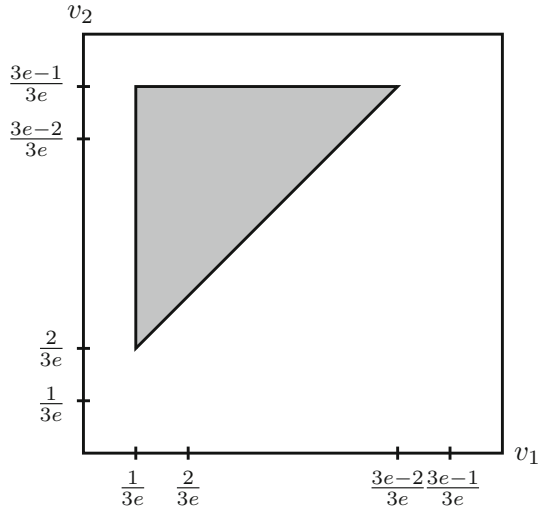
Fig. 3 The setup for the boundary value problem introduced in Question 1.3

Question 1.3 Let H denote the evenly shifted $(k + 1)$ -copy of $U(1)$. For which vectors (v_1, \dots, v_k) is there a Lagrangian cobordism from $\Lambda_- = H$ to $\Lambda_+ = H(v_1, \dots, v_k)$ of length at most 1?

See Fig. 3. We will answer this question in Theorem 6.4 by showing that a Lagrangian cobordism exists for (v_1, \dots, v_k) if and only if the following system of linear inequalities are satisfied:

$$\frac{i - j}{(k + 1)e} \leq v_i - v_j \leq 1 - \frac{(k + 1) - (i - j)}{(k + 1)e}, \tag{1.1}$$

Fig. 4 The shaded region depicts the realizable shifts v_1, v_2 of the top two components of a 3-copy as specified by Inequalities (1.1)



where $i \in \{1, \dots, k\}, j \in \{0, \dots, k-1\}, i > j$, and $v_0 = 0$. In the case of the 3-copy, these inequalities are visualized in Fig. 4.

Finally, it is well known (see [5] and also [4, 19, 22, 27]) that a Legendrian isotopy induces a Lagrangian cobordism. We consider Lagrangian cobordisms derived from loops of Legendrian submanifolds, i.e. isotopies that begin and end at the same Legendrian submanifold. Unlike in the previous examples, we will now restrict attention to a given isotopy class of Lagrangian cobordisms: for a Lagrangian cobordism L_γ derived from a loop of Legendrian submanifolds γ , we denote the set of Lagrangian cobordisms that are Lagrangian isotopic to L_γ through compactly supported isotopies by $[L_\gamma]$. Clearly if the loop γ is trivial, then there will be Lagrangian cobordisms of arbitrarily short length in $[L_\gamma]$. If the loop is non-trivial, the corresponding isotopy class of Lagrangian cobordisms may or may not contain short representatives:

Theorem 1.4 *For any $b > 0$, there exists a non-trivial loop γ^b of Legendrian submanifolds with induced Lagrangian cobordism L_{γ^b} such that the length of any Lagrangian cobordism in $[L_{\gamma^b}]$ is bounded below by b . On the other hand, there exists a non-trivial loop of Legendrian submanifolds γ' with induced Lagrangian cobordism $L_{\gamma'}$ such that $[L_{\gamma'}]$ contains arbitrarily short cobordisms.*

The non-trivial loop γ that leads to long cobordisms comes from a loop of Legendrian trefoil knots constructed by Kálmán [32]. The non-trivial loop γ' that leads to short cobordisms comes from a loop of Legendrian spheres in \mathbb{R}^{2n+1} constructed by the first author and Sullivan [38].

1.3 Tools

The results above require two types of tools: those that allow us to construct Lagrangian cobordisms and examine their lengths, and those that allow us to obstruct the existence

of a short Lagrangian cobordism. To prove upper bounds on the length of a Lagrangian cobordism, we re-examine existing constructions of Lagrangian cobordisms using Legendrian isotopies as in [19], slightly refined with the notion of length in mind. To obtain the lower bounds on length, we develop a framework for capacities of Legendrian submanifolds, and show how those capacities are related under Lagrangian cobordism.

Our capacities are derived from a filtered version of Legendrian Contact Cohomology, linearized by an augmentation ε ; these capacities are, in a sense, monotonic under Lagrangian cobordism. Note that this framework—though not the actual construction—is similar to that used for slices of “flat-at-infinity” Lagrangians [39] and to Hutchings’ ECH capacities [30]. More specifically, for each linearized Legendrian Contact Cohomology class $\theta \in LCH^*(\Lambda, \varepsilon)$, we define a quantity $c(\Lambda, \varepsilon, \theta) \in (0, +\infty]$ that, essentially, measures the Reeb height of the class θ . Ekholm showed that a Lagrangian cobordism L from Λ_- to Λ_+ with an augmentation ε_- for Λ_- induces an augmentation ε_+ of Λ_+ and a map

$$\Psi_1^{L, \varepsilon_-} : LCH^*(\Lambda_-, \varepsilon_-) \rightarrow LCH^*(\Lambda_+, \varepsilon_+).$$

We show that this map is actually a filtered map, and prove the following inequality:

Theorem 1.5 *Given a Lagrangian cobordism L from Λ_- to Λ_+ that is cylindrical outside $[s_-, s_+]$, an augmentation ε_- of Λ_- , and the augmentation ε_+ of Λ_+ induced by L , the following inequality holds for any $\theta \in LCH^*(\Lambda_-, \varepsilon_-)$:*

$$e^{s_-} c(\Lambda_-, \varepsilon_-, \theta) \leq e^{s_+} c(\Lambda_+, \varepsilon_+, \Psi_1^{L, \varepsilon_-}(\theta)). \tag{1.2}$$

Thus, for any augmentation ε_- of Λ_- and any $\theta \in LCH^(\Lambda_-, \varepsilon_-)$ not in $\ker \Psi_1^{L, \varepsilon_-}$, we may bound the length of L by*

$$\ell(L) \geq \ln c(\Lambda_-, \varepsilon_-, \theta) - \ln c(\Lambda_+, \varepsilon_+, \Psi_1^{L, \varepsilon_-}(\theta)). \tag{1.3}$$

As hinted by the subscript 1 in the notation for the cobordism map, there is actually a full A_∞ map between the Legendrian Contact Cohomology A_∞ algebras of Λ_\pm . A more general version of Theorem 1.5 holds for the components $\Psi_k^{L, \varepsilon_-}$ of the A_∞ map; see Theorem 5.5.

Remark 1.6 The capacity framework may also be developed using Generating Family Homology using the tools in [40], but we chose to focus on the Legendrian Contact Homology tools in this paper.

The remainder of the paper is structured as follows: in Sect. 2, we set down precise definitions, and in Sect. 3, we describe several constructions of Lagrangian cobordisms that will prove useful in later sections. In Sect. 4, we establish the framework for capacities from LCH, culminating in a proof of Theorem 1.5 and its generalization to A_∞ maps. Applications of the capacities, including proofs of Theorems 1.1, 1.2, and 1.4, are then given in Sect. 6.

2 Legendrian submanifolds and Lagrangian cobordisms

In this section, we set notation and specify the precise definition of a Lagrangian cobordism between two Legendrian submanifolds. Throughout the paper, we assume familiarity with basic ideas in contact and symplectic topology, especially with regards to Legendrian and (exact) Lagrangian submanifolds. See, for example, Etnyre [23] for background on Legendrian submanifolds and Audin et al. [1] on Lagrangian submanifolds.

2.1 Notation for Legendrian submanifolds

We will work primarily in the 1-jet space of a smooth manifold M^m where M is either compact or equal to \mathbb{R}^m . Topologically, we have $J^1M = T^*M \times \mathbb{R}$ with local coordinates $(\mathbf{x}, \mathbf{y}, z)$. A 1-jet space is naturally a contact manifold with contact form $\alpha = dz - \mathbf{y} \cdot d\mathbf{x}$.

A **Legendrian submanifold** $\Lambda \subset J^1M^m$ is an m -dimensional submanifold that is everywhere tangent to the contact structure $\xi = \ker \alpha$. A Legendrian submanifold has two important projections: the **front projection** to $M \times \mathbb{R}$ and the **Lagrangian projection** to T^*M . Note that the image of a Legendrian submanifold under the Lagrangian projection is an exact and possibly immersed Lagrangian submanifold.

A **Reeb chord** of a Legendrian submanifold Λ is an integral curve of the Reeb vector field, which is $\frac{\partial}{\partial z}$ in our setting, whose endpoints both lie on Λ . In particular, a Reeb chord will have constant T^*M coordinates and will go from a lesser to a greater z value. Denote the collection of Reeb chords of Λ by \mathcal{R}_Λ . The **height of a Reeb chord** b is:

$$h(b) = \int_b \alpha = \int_b dz > 0. \tag{2.1}$$

Reeb chords are clearly in bijective correspondence with double points of the Lagrangian projection of Λ . A Legendrian submanifold is **chord generic** if the corresponding double points of the Lagrangian projection of Λ are transverse.

2.2 Exact cobordisms, primitives, and lengths

We next discuss the formal definition of the Lagrangian cobordisms we consider in this paper. Let Y be an odd-dimensional manifold with contact form α . We work in the symplectization $(\mathbb{R} \times Y, d(e^s\alpha))$ of Y , where s denotes the coordinate on the \mathbb{R} factor.

Definition 2.1 An **(exact, orientable, cylindrical-at-infinity) Lagrangian cobordism** is an exact, orientable Lagrangian submanifold $L \subset (\mathbb{R} \times Y, d(e^s\alpha))$ such that there exist Legendrian submanifolds Λ_\pm of Y and real numbers $s_- \leq s_+$ satisfying:

- (1) $L \cap ((-\infty, s_-] \times Y) = (-\infty, s_-] \times \Lambda_-$,
- (2) $L \cap ([s_+, \infty) \times Y) = [s_+, \infty) \times \Lambda_+$, and

(3) The primitive of $e^s\alpha$ along L is constant for $s < s_-$ and for $s > s_+$.¹

We say that L is **cylindrical** outside of $[s_-, s_+]$. We will say such a Lagrangian is a Lagrangian cobordism from Λ_- to Λ_+ .

For succinctness, we will henceforth drop the qualifiers “exact, orientable, cylindrical-at-infinity” when referring to Lagrangian cobordisms, though they are still understood to hold.

The primary object of study in this paper is:

Definition 2.2 The **length** of a Lagrangian cobordism L is

$$\ell(L) = \inf\{s_+ - s_- : L \text{ is cylindrical outside of } [s_-, s_+]\}.$$

3 Constructions of Lagrangian cobordisms

In recent years, several methods for constructing Lagrangian cobordisms have been developed, yielding constructions based on Legendrian isotopy [4,5,19,22,27], spinning [4,28], and Lagrangian handle attachment [4,11,19]. In this section, we will review a method to construct a Lagrangian cobordism from a Legendrian isotopy and will then apply this construction to give upper bounds on lengths of Lagrangian cobordisms induced by Legendrian isotopies.

We begin by reviewing the construction of a Lagrangian cobordism induced by a Legendrian isotopy from [19, §6]. Note that the original construction in [19] was performed for Legendrian links in the standard contact \mathbb{R}^3 , but the proof goes through almost word-for-word in the more general setting.

Let Λ_s , with $s \in \mathbb{R}$, be a smooth 1-parameter family of closed, but not necessarily connected, Legendrian submanifolds of J^1M , where $\Lambda_s = \Lambda_-$ for $s \leq s_-$ and $\Lambda_s = \Lambda_+$ for $s \geq s_+$. Parametrize the Legendrians in this isotopy by $\lambda_s : \Sigma \rightarrow J^1M$, where we write $\lambda_s(t) = (\mathbf{x}(s, t), \mathbf{y}(s, t), z(s, t))$. While the trace of the isotopy in $\mathbb{R} \times J^1M$ is not necessarily Lagrangian, we may use the function

$$\eta(s, t) = \alpha(\partial_s \lambda_s(t)) \tag{3.1}$$

to perturb the trace into a (potentially immersed) exact Lagrangian cobordism.

Lemma 3.1 ([19]) *The map $\Gamma : \mathbb{R} \times \Sigma \rightarrow \mathbb{R} \times J^1M$ defined by*

$$\Gamma(s, t) = (s, \mathbf{x}(s, t), \mathbf{y}(s, t), z(s, t) + \eta(s, t)) \tag{3.2}$$

is an exact Lagrangian immersion. If $\eta(s, t)$ is sufficiently small, then the image of Γ is an exact Lagrangian cobordism from Λ_- to Λ_+ .

¹ See [6] for an explanation of the third condition. It is easy to check that the third condition is automatically satisfied if the Legendrians at the ends are connected. In general, the primitive of $e^s\alpha$ along L is constant on each component of Λ_{\pm} .

The proof is a direct calculation that makes essential use of the fact that $\lambda_s(t)$ is Legendrian for each s , yielding a primitive $e^s \eta(s, t)$ for the pullback $\Gamma^*(e^s \alpha)$. Since $\partial_s \lambda_s(t)$ has compact support, the primitive vanishes at both ends of the cobordism.

Observe that by “spreading out” the Legendrian isotopy, we can guarantee that $\eta(s, t)$ is sufficiently small, and hence isotopic Legendrians can always be connected by a long Lagrangian cobordism. We may, however, analyze when the immersion Γ is an embedding more precisely:

Lemma 3.2 *The exact Lagrangian immersion Γ from (3.2) is an embedding if for all $s \in \mathbb{R}$, no Reeb chord of Λ_s (from $\lambda_s(t)$ to $\lambda_s(t')$) has height $\eta(s, t) - \eta(s, t')$.*

Proof A double point of the image of Γ comes from points (s, t) and (s', t') that satisfy $s = s'$, $\mathbf{x}(s, t) = \mathbf{x}(s, t')$, and $\mathbf{y}(s, t) = \mathbf{y}(s, t')$ — in particular, $\lambda_s(t)$ and $\lambda_s(t')$ must be endpoints of a Reeb chord of Λ_s . Equality of the last coordinate of the immersion Γ shows that $z(s, t) + \eta(s, t) = z(s, t') + \eta(s, t')$. Assume without loss of generality that $z(s, t) < z(s, t')$. We then see that double points occur when the height of that Reeb chord from $\lambda_s(t)$ to $\lambda_s(t')$ equals $\eta(s, t) - \eta(s, t')$. \square

From this, we see that two Legendrians related by a strict contact isotopy can be connected by an arbitrarily short Lagrangian cobordism:

Proposition 3.3 *Let $\Lambda \subset J^1M$ be a Legendrian submanifold. If $\Phi : J^1M \times \mathbb{R} \rightarrow J^1M$ is a contact isotopy such that $\Phi_s = id$ for $s \leq 0$, $\Phi_s = \Phi_1$ for $s \geq 1$, and each Φ_s preserves the contact form α , then there exist arbitrarily short Lagrangian cobordisms from $\Lambda_- = \Lambda$ to $\Lambda_+ = \Phi_1(\Lambda)$.*

Proof Let X_s be the contact vector field generating Φ_s and note that η is the restriction of $\alpha(X_s)$ to the trace of Λ under Φ_s . Since Φ_s preserves the contact form, we may compute:

$$0 = \mathcal{L}_{X_s} \alpha = d(\alpha(X_s)) + \iota_{X_s} d\alpha. \tag{3.3}$$

Plugging the Reeb field ∂_z into both sides of Eq. (3.3) and using the fact $d\alpha(\partial_z, \cdot) = 0$ tells us that $0 = d(\alpha(X_s))(\partial_z) = \partial_z(\alpha(X_s))$. That is, η is constant along Reeb chords, hence $\eta(s, t) - \eta(s, t') = 0$ at the endpoints of any Reeb chord. Since the height of a Reeb chord is never 0, Lemma 3.2 implies that the Lagrangian induced by the Legendrian isotopy Λ_s is always embedded. \square

As an immediate application, we see that any two Legendrians that are related by a “vertical shift” can be connected by an arbitrarily short Lagrangian cobordism.

Corollary 3.4 *Given a Legendrian $\Lambda \subset J^1M$, for any $v \in \mathbb{R}$, let Λ^v denote the Legendrian that is a vertical translation of Λ by v : if Λ is parameterized by $\lambda(t) = (x(t), y(t), z(t))$, Λ^v is parameterized by $\lambda(t) = (x(t), y(t), z(t) + v)$. Then, for any $v \in \mathbb{R}$, there exist arbitrarily short cobordisms from $\Lambda_- = \Lambda$ to $\Lambda_+ = \Lambda^v$.*

Remark 3.5 For later purposes, it will be useful to more carefully examine the Lagrangian generated in the proof of Corollary 3.4. By construction, the Lagrangian cobordism is the image of

$$\Gamma(s, t) = (s, \mathbf{x}(t), \mathbf{y}(t), z(t) + \rho(s) + \rho'(s)).$$

For any fixed $\nu \neq 0$, as the cobordism gets shorter, $\|\rho'\|_\infty$ must get larger. Thus, the Lagrangian will be quite different than the trace of the isotopy.

In addition to being able to realize vertical displacements by arbitrarily short cobordisms, Legendrians related by a horizontal displacement or other changes that result from transformations of the base coordinates can be connected by arbitrarily short cobordisms.

Corollary 3.6 *Let $\Lambda \subset J^1M$ be parametrized by $\lambda(t) = (x(t), y(t), z(t))$ and suppose Φ is a diffeomorphism of M that is isotopic to the identity. Let Λ_Φ denote the corresponding Legendrian that is parameterized by*

$$\lambda_\Phi(t) = \left(\Phi(x(t)), [D\Phi(x(t))^{-1}]^T y(t), z(t) \right).$$

Then there are arbitrarily short Lagrangian cobordisms from $\Lambda_- = \Lambda$ to $\Lambda_+ = \Lambda_\Phi$.

It is also natural to consider Legendrians whose fronts differ by vertical expansions and contractions. Explicit constructions show that vertical expansions can be achieved by arbitrarily short cobordisms, while vertical contractions require some length using these constructions:

Proposition 3.7 *Let $\Lambda \subset J^1M$ be a Legendrian submanifold. Let Λ^σ denote the image of Λ under the yz scaling contact diffeomorphism $(x, y, z) \mapsto (x, \sigma y, \sigma z)$.*

- (1) *If $\sigma > 1$, then there are arbitrarily short Lagrangian cobordisms from $\Lambda_- = \Lambda$ to $\Lambda_+ = \Lambda^\sigma$.*
- (2) *If $\sigma < 1$, then there exists a Lagrangian cobordism from $\Lambda_- = \Lambda$ to $\Lambda_+ = \Lambda^\sigma$ of length arbitrarily close to $\ln \frac{1}{\sigma}$.*

Proof Parametrize the Legendrian Λ by $\lambda(t) = (x(t), y(t), z(t))$, and suppose Λ has k Reeb chords of heights $0 < h_1 \leq h_2 \leq \dots \leq h_k$. Let $\rho : \mathbb{R} \rightarrow \mathbb{R}$ be a smooth function that is equal to 1 for $s \leq 0$ and is equal to σ for $s \geq A$. Consider the Legendrian isotopy

$$\lambda_s(t) = (x(t), \rho(s)y(t), \rho(s)z(t)).$$

It follows that $\eta(s, t) = \rho'(s)z(t)$. The Legendrian Λ_s given as the image of λ_s will again have k Reeb chords, now of heights $0 < \rho(s)h_1 \leq \rho(s)h_2 \leq \dots \leq \rho(s)h_k$. For every Reeb chord of Λ_s of height $\rho(s)h_i$, there will be a pair of points t, t' with $\eta(s, t) - \eta(s, t') = \rho'(s)(-h_i)$. Thus we see that the embedding condition in Lemma 3.2 is guaranteed when $\rho(s) \neq -\rho'(s)$, for all s ; equivalently, the condition is

$$\frac{d}{ds}(e^s \rho(s)) \neq 0. \tag{3.4}$$

Since $\rho(s) = 1$ when $s \leq 0$, this equation is satisfied if and only if $e^s \rho(s)$ is a strictly increasing function.

It is possible to choose $\rho(s)$ that satisfies the boundary conditions $\rho(0) = 1$ and $\rho(A) = \sigma$ in addition to Eq. (3.4) whenever

$$1 = e^s \rho(s)|_{s=0} < e^s \rho(s)|_{s=A} = e^A \sigma. \tag{3.5}$$

For an expansion, i.e. when $\sigma > 1$, Eq. (3.5) is satisfied for any $A > 0$; statement (1) follows. For a contraction, i.e. when $\sigma < 1$, we can construct $\rho(s)$ so that $e^s \rho(s)$ is strictly increasing as long as $\ln \frac{1}{\sigma} < A$; statement (2) follows. \square

Are the cobordisms constructed in the proof of Proposition 3.7(2) the shortest possible? We will return to this question in Sect. 6 after developing tools to bound the length of a cobordism.

4 Capacities from Legendrian contact homology

In this section, we will define a set of elements from $(0, \infty]$ that can be associated to a Legendrian submanifold that is equipped with an augmentation ε of its DGA. These capacities, defined using a filtered version of Linearized Legendrian Contact Cohomology, will *not* be Legendrian isotopy invariants; however, as will be shown in Sect. 5, these capacities can give lower bounds to the length of a Lagrangian cobordism.

4.1 Legendrian contact homology

The definition of the LCH differential graded algebra is motivated by the infinite-dimensional Morse–Floer theory of the action functional on the relative path space of a Legendrian submanifold Λ . The analytic framework for LCH was developed by Eliashberg [20,21] and was first made rigorous for 1-dimensional Legendrians using combinatorial methods by Chekanov [9]. The theory was established for higher dimensional Legendrian submanifolds in 1-jet spaces by Ekholm et al. [16–18]. Our description below owes more to [21] and to Dimitroglou Rizell’s translation between the two perspectives [12].

We begin our brief synopsis with a chord-generic Legendrian submanifold Λ of J^1M with its standard contact structure $\xi = \ker \alpha$, where M is either a compact manifold or \mathbb{R}^n for $n \geq 1$. As LCH takes the form of a differential graded algebra, we first define A_Λ to be the vector space generated by the set of Reeb chords \mathcal{R}_Λ over the field \mathbb{F}_2 of two elements. We then define \mathcal{A}_Λ to be the unital tensor algebra $TA_\Lambda = \bigoplus_{i=0}^\infty A_\Lambda^{\otimes i}$. The generators of A_Λ are graded by a Conley–Zehnder index, with the grading extended to all of \mathcal{A}_Λ by letting the grading of a word be the sum of the gradings of its constituent generators. The gradings are well-defined up to the Maslov number of the Lagrangian projection of Λ . If Λ has n components, then the gradings of Reeb chords between different components are defined up to a shift that is constant for all Reeb chords between the same two components.

The differential $\partial_\Lambda : \mathcal{A}_\Lambda \rightarrow \mathcal{A}_\Lambda$ comes from a count of rigid moduli spaces of J -holomorphic disks. More specifically, first choose a sufficiently generic, compatible, and \mathbb{R} -invariant almost complex structure J on the symplectization $(\mathbb{R} \times J^1M, d(e^s \alpha))$ satisfying $J(\xi) = \xi$ and $J(\partial_s) = \partial_z$. Let D_k denote the closed unit disk in \mathbb{C} with $k + 1$ punctures $\{z_0, \dots, z_k\}$ on its boundary. Given a Reeb chord $a \in \mathcal{R}_\Lambda$ and a monomial $\mathbf{b} = b_1 \cdots b_k$ in \mathcal{A}_Λ , consider the set of J -holomorphic maps $u : D_k \rightarrow \mathbb{R} \times J^1M$ that satisfy:

- (1) The boundary of D_k maps to $\mathbb{R} \times \Lambda$;

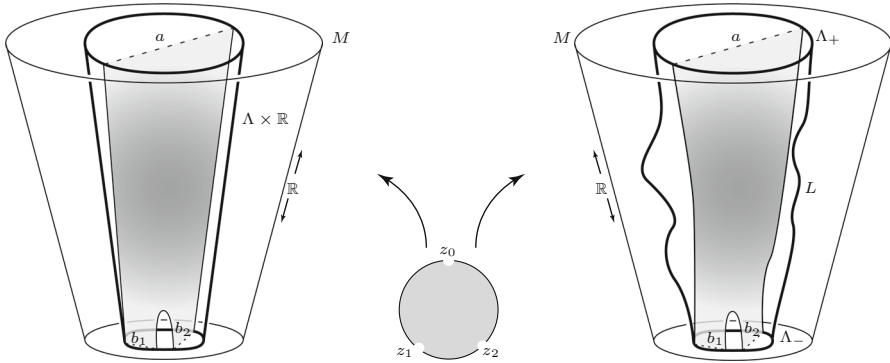


Fig. 5 Schematic pictures of a disk in the moduli space $\mathcal{M}_{\mathbb{R} \times \Lambda}^J(a; \mathbf{b})$ (on left), and a disk in the moduli space $\mathcal{M}_L^J(a; \mathbf{b})$ (on right)

- (2) Near the puncture z_0 , the \mathbb{R} coordinate of u approaches $+\infty$ and the J^1M coordinate is asymptotic to $\mathbb{R} \times a$; and
- (3) Near the puncture z_l , for $1 \leq l \leq k$, the \mathbb{R} coordinate of u approaches $-\infty$ and the J^1M coordinate is asymptotic to $\mathbb{R} \times b_l$.

See Fig. 5a. The moduli space $\mathcal{M}_{\mathbb{R} \times \Lambda}^J(a; \mathbf{b})$ is the set of such maps up to reparametrization. Generically, the moduli space is a manifold that is invariant under the \mathbb{R} -action induced by translation in the symplectization [16, 18].

The differential of a Reeb chord $a \in \mathcal{R}_\Lambda$ counts 1-dimensional moduli spaces, with that one dimension coming from translation invariance:

$$\partial_\Lambda(a) = \sum_{\dim \mathcal{M}_{\mathbb{R} \times \Lambda}^J(a; \mathbf{b})=1} \#(\mathcal{M}_{\mathbb{R} \times \Lambda}^J(a; \mathbf{b})/\mathbb{R}) \mathbf{b}. \tag{4.1}$$

The differential is then extended to all of \mathcal{A}_Λ via the Leibniz rule and linearity.

That the sum in Eq. (4.1) is finite follows from the compactness of the moduli space and from an estimate on the Λ -energy of an element $u \in \mathcal{M}_{\mathbb{R} \times \Lambda}^J$, defined to be

$$E_\Lambda(u) = \int_{D^2} u^* d\alpha.$$

The compatibility of J with $d(e^t \alpha)$ and Stokes' Theorem imply:

Lemma 4.1 For a J -holomorphic disk $u \in \mathcal{M}_{\mathbb{R} \times \Lambda}^J(a; \mathbf{b})$, the Λ -energy satisfies

$$0 \leq E_\Lambda(u) = h(a) - \sum h(b_i).$$

The facts that the differential satisfies ∂_Λ^2 and that the homology of the DGA is invariant under Legendrian isotopy follows from a compactification and gluing argument [16, 18].

4.2 Linearized LCH and its A_∞ structure

In order to extract readily computable information from the LCH DGA, we use Chekanov’s technique of linearization from [9], enhanced to a full A_∞ algebra as in [10]. Note that linearization is not always possible [24,25,36] and that different linearizations may lead to different linearized (co)homologies [33].

We begin the linearization process by introducing some notation for the differential. The differential is determined by its action on A_Λ , and its restriction to A_Λ may be written as a sum $\partial_\Lambda = \sum_{i=0}^\infty \partial_i$ with ∂_i mapping A_Λ to $A_\Lambda^{\otimes i}$. In particular, the obstruction to the linear part of the differential, ∂_1 , being a differential on A_Λ is ∂_0 . The goal of the linearization technique is to change coordinates so that $\partial_0 = 0$.

The key idea in Chekanov’s linearization technique is an **augmentation**, a unital DGA map $\varepsilon : (\mathcal{A}_\Lambda, \partial_\Lambda) \rightarrow (\mathbb{F}_2, 0)$ supported in degree 0. Given an augmentation ε of $(\mathcal{A}_\Lambda, \partial_\Lambda)$, one can construct a change of coordinates on \mathcal{A}_Λ by $\eta^\varepsilon(a) = a + \varepsilon(a)$ and a new differential $\partial^\varepsilon = \eta^\varepsilon \partial_\Lambda (\eta^\varepsilon)^{-1}$. It is easy to check that $\partial_0^\varepsilon = 0$. We use the adjoint d^ε of ∂_1^ε to define a differential on the the dual vector space A_Λ^* . The cohomology groups of $(A_\Lambda^*, d^\varepsilon)$ are denoted $LCH^*(\Lambda, \varepsilon)$ and referred to as the **Linearized Legendrian Contact Cohomology (with respect to ε)**. One may similarly define homology groups $LCH_*(\Lambda, \varepsilon)$ using the differential ∂_1^ε , though we will not use these groups except in Example 4.9, below.

At least some of the non-linear information of ∂_Λ may be recovered in the linearized setting by introducing an A_∞ algebra structure on A_Λ^* . That is, we define a sequence of degree 1, linear maps

$$\mathbf{m}^\varepsilon = \{m_k^\varepsilon : (A_\Lambda^*)^{\otimes k} \rightarrow A_\Lambda^*\}_{k \geq 1}$$

to be the adjoints of the maps ∂_k^ε .

As shown in [10], the fact that $\partial_\Lambda^2 = 0$ implies that the sequence \mathbf{m}^ε satisfies the A_∞ relations

$$\sum_{i+j+k=n} m_{i+1+k}^\varepsilon \circ (1^{\otimes i} \otimes m_j^\varepsilon \otimes 1^{\otimes k}) = 0,$$

for all $n \in \mathbb{N}$. In particular, m_1^ε is a differential on A_Λ^* (in fact, it is d^ε). It is a standard fact that \mathbf{m}^ε descends to an A_∞ structure $\boldsymbol{\mu}^\varepsilon$ on the cohomology $LCH^*(\Lambda, \varepsilon)$ with $\mu_1^\varepsilon = 0$ and with μ_2^ε giving an associative product; see [31].

Remark 4.2 One can also define the codifferential operator d^ε directly on the generators by:

$$d^\varepsilon(c) = \sum_{\dim \mathcal{M}_{\mathbb{R} \times \Lambda}^J(a; \mathbf{bcd})=1} \#(\mathcal{M}_{\mathbb{R} \times \Lambda}^J(a; \mathbf{bcd})/\mathbb{R}) \varepsilon(\mathbf{b})\varepsilon(\mathbf{d})a. \tag{4.2}$$

Note, in particular, that the codifferential goes “up” the symplectization, while the differential ∂_Λ goes “down.”

Similarly, one may define the A_∞ operations directly:

$$\begin{aligned}
 & m_k^\varepsilon(c_1, \dots, c_k) \\
 &= \sum_{\dim \mathcal{M}_{\mathbb{R} \times \Lambda}^J(\dots)=1} \#(\mathcal{M}_{\mathbb{R} \times \Lambda}^J(a; \mathbf{b}_0 c_1 \mathbf{b}_1 \cdots \mathbf{b}_{k-1} c_k \mathbf{b}_k) / \mathbb{R}) \varepsilon(\mathbf{b}_0) \cdots \varepsilon(\mathbf{b}_k) a.
 \end{aligned}$$

Remark 4.3 The grading convention in the definition of A_∞ algebra above is not standard: one usually wants m_k to be a map of degree $2 - k$. As remarked in [10] and as carried out in [2], one could fix this by working with the grading-shifted complex $A_\Lambda^*[1]$. Further, we avoid the usual sign conventions for the A_∞ relation as we are working over \mathbb{F}_2 . See [26, 41] for a discussion of the standard grading and sign conventions for A_∞ algebras.

Remark 4.4 Following [2], one can use two augmentations ε_1 and ε_2 to define the **Bilinearized Legendrian Contact (Co)homology**. The underlying vector space is the same as above, but the definition of the codifferential in Eq. (4.2) replaces the terms $\varepsilon(\mathbf{b})\varepsilon(\mathbf{d})$ with $\varepsilon_1(\mathbf{b})\varepsilon_2(\mathbf{d})$. Bourgeois and Chantraine show that the Bilinearized LCH may be enriched into an A_∞ category called the **Augmentation Category**.

All of the constructions developed later in this section also apply to the Bilinearized Legendrian Contact Cohomology and the Augmentation Category without significant change, though we stay in the A_∞ algebra context for ease of notation. The definition of the augmentation category may be adjusted to a *unital* augmentation category [35], but the original augmentation category is more suitable for the capacities to be defined below as it has a fundamental class instead of a unit.

4.3 Capacities for Legendrian submanifolds

In this subsection, we will associate to a fixed Legendrian submanifold Λ and an augmentation ε of its LCH DGA a set of elements from $(0, \infty]$ called capacities. These quantities are similar to capacities defined by Viterbo [42] for a Lagrangian submanifold and by the authors [39] for slices of a “flat at infinity” Lagrangian. Keep in mind that these capacities are attached to a fixed Legendrian submanifold and are *not* invariant under Legendrian isotopy.

The first step is to define a filtration on A_Λ . For any $w \in \mathbb{R}$, define the sets

$$\mathcal{R}_\Lambda^w = \{\gamma \in \mathcal{R}_\Lambda : h(\gamma) \geq w\},$$

where, as in (2.1), $h(\gamma) = \int_\gamma \alpha$. Let $F^w A_\Lambda^*$ be the graded vector space with basis \mathcal{R}_Λ^w . By Lemma 4.1, $F^w A_\Lambda^*$ is a subcomplex of A_Λ^* with respect to the differential d^ε for any augmentation ε . Hence the filtration descends to the Linearized Legendrian Contact Cohomology to define **Filtered Linearized Legendrian Contact Cohomology**, $LCH_w^*(\Lambda, \varepsilon)$, the cohomology groups of the quotient $A_\Lambda^* / F^w A_\Lambda^*$.

Remark 4.5 The filtration $F^w A_\Lambda^*$ is different from the one defined on the A_∞ algebra associated to a Lagrangian in [26, §3.2], as we have no need for Novikov ring coefficients.

Consider the projection $p^w : A_\Lambda^* \rightarrow A_\Lambda^*/F^w A_\Lambda^*$. We may use p^w to calculate the height of a Reeb chord b :

$$h(b) = \sup\{w : p^w(b) = 0\}.$$

The capacity of a cohomology class is simply an extension of this idea of height. Let $P^w : LCH^*(\Lambda, \varepsilon) \rightarrow LCH_w^*(\Lambda, \varepsilon)$ denote the map induced by p^w . For w close to zero, P^w is the zero map, while for sufficiently large w , P^w is an isomorphism. Thus, for nonzero θ , the set $\{w : P^w(\theta) = 0\}$ is non-empty and bounded above.

Definition 4.6 Given a Legendrian submanifold $\Lambda \subset J^1M$, an augmentation ε of its Legendrian Contact Homology DGA, and $\theta \in LCH^*(\Lambda, \varepsilon)$, the **capacity** $c(\Lambda, \varepsilon, \theta)$ is defined to be:

$$c(\Lambda, \varepsilon, \theta) = \begin{cases} \sup\{w : P^w(\theta) = 0\}, & \theta \neq 0 \\ \infty, & \theta = 0. \end{cases}$$

A key fact for computing capacities is the following:

Lemma 4.7 For nonzero θ , $c(\Lambda, \varepsilon, \theta)$ is always the height of some Reeb chord.

The proof of this lemma is analogous to the proof of Lemma 4.5 in [39].

Example 4.8 Let us compute capacities for the Legendrian unknot $U(v)$ and its higher-dimensional generalizations $U^n(v) \subset \mathbb{R}^{2n+1}$. The submanifold $U^n(v)$ has a single Reeb chord γ of grading n and height v . For $n \geq 2$, it follows for grading reasons that $\partial\gamma = 0$, and the same result holds for $n = 1$ if one computes as in [9]. Thus, we may use the trivial augmentation ε , and we can see that $LCH^*(U^n(v), \varepsilon)$ is generated by $[\gamma]$ in degree n . Since $p^w(\gamma)$ vanishes for $w < h(\gamma) = v$ and is nonzero for $w > v$, we see that

$$c(U^n(v), \varepsilon, [\gamma]) = v.$$

Example 4.9 For a connected Legendrian submanifold $\Lambda \subset \mathbb{R}^{2n+1}$ with augmentation ε , there is a distinguished class $\lambda \in LCH^n(\Lambda, \varepsilon)$ called the **fundamental class**.² To define λ , we use the duality exact sequence of [15]:

$$\cdots \longrightarrow LCH_0(\Lambda, \varepsilon) \xrightarrow{\rho_*} H_0(\Lambda) \xrightarrow{\sigma_*} LCH^n(\Lambda, \varepsilon) \longrightarrow \cdots$$

Theorem 5.5 of [15] shows that ρ_* is trivial in degree 0, and hence σ_* is injective. Define the fundamental class $\lambda \in LCH^n(\Lambda, \varepsilon)$ to be the image of the generator $[pt]$ of $H_0(\Lambda)$ (remember that we are using \mathbb{F}_2 coefficients, so there is only one generator). The usual definition of a fundamental class $\eta \in LCH_n(\Lambda, \varepsilon)$ is similar: the map ρ_* is onto in degree n , and η has the property that $\rho_*(\eta) = [\Lambda]$, where the latter is the

² The fundamental class in this paper is hom-dual to the usual definition of the fundamental class of [15, 37]. See below.

fundamental class in $H_n(\Lambda)$; note that this is equivalent to the definition in [19, §7.4] once one unwinds the definition of ρ_* . Using Theorem 1.1 of [15], we see that

$$\langle \lambda, \eta \rangle = \langle PD[pt], [\Lambda] \rangle = 1, \quad (4.3)$$

where $\langle \cdot, \cdot \rangle$ is the usual pairing between homology and cohomology and PD is Poincaré duality on Λ .

We define the **fundamental capacity** of Λ with respect to the augmentation ε to be $c(\Lambda, \varepsilon, \lambda)$. The computation in Example 4.8, above, is an example of a fundamental capacity.

5 Induced maps from Lagrangian cobordism

In this section, we will establish a lower bound for the length of a Lagrangian cobordism between two fixed Legendrians. The bound arises from understanding induced maps between the filtered Linearized Legendrian Contact Cohomology of the Legendrians at the ends. In particular, we establish the lower bounds for a Lagrangian cobordism stated in Theorem 1.5, which is generalized to an A_∞ version in Theorem 5.5.

5.1 DGA cobordism maps

That LCH has the structure of a field theory with respect to Lagrangian cobordism goes back to its initial conception [21]; the analytic details were eventually worked out in [13, §B] and [3, §11] and gathered together in [19, §3]. While the theory described in [19, §3] specifies \mathbb{R}^3 as the ambient contact manifold, the analysis underlying the results holds in the more general case of J^1M . In this section, we sketch the constructions of maps induced by a Lagrangian cobordism; summarizing sketches of the theory with goals similar to ours appear in [7, 12, 19].

To fit LCH into a field theory, we must define a DGA map associated to a Lagrangian cobordism L from Λ_- to Λ_+ :

$$\phi_L : (\mathcal{A}_{\Lambda_+}, \partial_{\Lambda_+}) \rightarrow (\mathcal{A}_{\Lambda_-}, \partial_{\Lambda_-}).$$

To define the map ϕ_L , we introduce a new moduli space of J -holomorphic disks, where J is an almost complex structure on the symplectization that is sufficiently generic, compatible, and cylindrical at the ends. Given $a \in \mathcal{R}_{\Lambda_+}$ and a monomial $\mathbf{b} = b_1 \cdots b_k$ in \mathcal{A}_{Λ_-} , consider the set of J -holomorphic maps $u : D_k \rightarrow \mathbb{R} \times J^1M$ that map the boundary of D_k to L and that satisfy asymptotic conditions similar to those in Sect. 4; see Fig. 5 (right). The moduli space $\mathcal{M}_L^J(a; \mathbf{b})$ is the set of such maps up to reparametrization, and it is, generically, a compact manifold [16, 18]. The map ϕ_L may now be defined on the generators of \mathcal{A}_{Λ_+} by:

$$\phi_L(a) = \sum_{\dim \mathcal{M}_L^J(a; \mathbf{b})=0} \# \mathcal{M}_L^J(a; \mathbf{b}) \mathbf{b}. \quad (5.1)$$

In Sect. 4, we explained that the finiteness of the sum in $\partial_\Lambda(a)$ follows from compactness and an examination of the Λ -energy of a J -holomorphic disk. To prove that the sum in Eq. (5.1) is finite, we use a notion of ‘‘Lagrangian energy,’’ which is a close relative to an energy introduced in [7]. Given a Lagrangian cobordism L that is cylindrical outside $[s_-, s_+]$, consider the piecewise smooth function $\varphi : \mathbb{R} \rightarrow [e^{s_-}, e^{s_+}]$ defined by

$$\varphi(t) = \begin{cases} e^{s_-}, & t \leq s_- \\ e^t, & t \in [s_-, s_+] \\ e^{s_+}, & t \geq s_+. \end{cases}$$

The L -energy of a J -holomorphic disk $u : (D_k, \partial D_k) \rightarrow (\mathbb{R} \times J^1M, L)$ is defined to be:

$$E(u) = \int_D u^*d(\varphi\alpha).$$

The L -energy depends on the choice of s_\pm , though this will not matter in applications.

To better understand the relationship between the L -energy and the cobordism map ϕ_L , we introduce the ‘‘cobordism action’’ of a Reeb chord γ . Suppose that a Lagrangian cobordism L is cylindrical outside of $[s_-, s_+]$, where s_\pm are the same constants chosen for the definition of the L -energy. We then define the **cobordism action** of a Reeb chord of Λ_\pm to be scaled heights:

$$\mathfrak{a}(\gamma) = \begin{cases} e^{s_+}h(\gamma), & \gamma \in \mathcal{R}_{\Lambda_+} \\ e^{s_-}h(\gamma), & \gamma \in \mathcal{R}_{\Lambda_-}. \end{cases} \tag{5.2}$$

As in Lemma 4.1, we may relate the L -energy of a J -holomorphic disk in \mathcal{M}_L^J to the cobordism actions of the Reeb chords at its ends.

Lemma 5.1 ([7]) *Given a Lagrangian cobordism L from Λ_- to Λ_+ that is cylindrical outside of $[s_-, s_+]$, the L -energy of $u \in \mathcal{M}_L^J(a; \mathbf{b})$ satisfies*

$$0 \leq E(u) = \mathfrak{a}(a) - \sum_i \mathfrak{a}(b_i).$$

The finiteness of the sum in Eq. (5.1) follows. That the map ϕ_L is, indeed, a chain map follows from compactness and gluing arguments in [13, §B] or in [3, §11]. In all of our examples, the Lagrangian cobordisms will be diffeomorphic to cylinders over Legendrians with vanishing rotation number, and hence will have Maslov number zero. Thus, we find ourselves in the setting of [13], and the cobordism map has degree 0. Finally, if the cobordisms L and L' differ by an exact Lagrangian isotopy, then ϕ_L and $\phi_{L'}$ differ by a chain homotopy [13, 19].

5.2 A_∞ cobordism maps

The material in this section has not been written down explicitly before, but its existence should be clear to those familiar with the theory.

In the presence of a Lagrangian cobordism L from Λ_- to Λ_+ , we simplify notation by writing \mathcal{A}_\pm for $\mathcal{A}_{\Lambda_\pm}$, etc. Given an augmentation ε_- of $(\mathcal{A}_-, \partial_-)$, the Lagrangian cobordism induces an augmentation $\varepsilon_+ = \varepsilon_- \circ \phi_L$ on $(\mathcal{A}_+, \partial_+)$. We may use these augmentations to change coordinates and define a new cobordism map $\phi_{L, \varepsilon_-} : (\mathcal{A}_+, \partial^{\varepsilon_+}) \rightarrow (\mathcal{A}_-, \partial^{\varepsilon_-})$. If we decompose the restriction of ϕ_{L, ε_-} to A_+ by components of $TA_- = \bigoplus_{i=0}^\infty A_-^{\otimes i}$, it is straightforward to check that the constant term vanishes.³ By taking the adjoints of the components of ϕ_{L, ε_-} , we obtain a (degree 0) A_∞ map $\psi^{L, \varepsilon_-} : (A_-^*, \mathbf{m}^-) \rightarrow (A_+^*, \mathbf{m}^+)$. Recall that an A_∞ map is really a sequence of maps $\psi_k^{L, \varepsilon_-} : (A_-^*)^{\otimes k} \rightarrow A_+^*$ that satisfy:

$$\sum_{i+j+k=n} \psi_{i+1+k}^{L, \varepsilon_-} \circ (1^{\otimes i} \otimes m_j^- \otimes 1^{\otimes k}) = \sum_{\substack{1 \leq r \leq n \\ i_1 + \dots + i_r = n}} m_r^+ \circ (\psi_{i_1}^{L, \varepsilon_-} \otimes \dots \otimes \psi_{i_r}^{L, \varepsilon_-}). \tag{5.3}$$

Remark 5.2 As in Remark 4.2, we may directly define the sequence of maps making up the A_∞ map ψ^{L, ε_-} as follows:

$$\psi_k^{\varepsilon_-}(c_1, \dots, c_k) = \sum_{\dim \mathcal{M}_L^J(\dots) = 0} \# \mathcal{M}_L^J(a; \mathbf{b}_0 c_1 \mathbf{b}_1 \dots \mathbf{b}_{k-1} c_k \mathbf{b}_k) \varepsilon_-(\mathbf{b}_0) \dots \varepsilon_-(\mathbf{b}_k) a.$$

The A_∞ map ψ^{L, ε_-} induces a map on cohomology denoted Ψ^{L, ε_-} . In particular, we have a sequence of maps:

$$\Psi_k^{L, \varepsilon_-} : LCH^*(\Lambda_-, \varepsilon_-)^{\otimes k} \rightarrow LCH^*(\Lambda_+, \varepsilon_+). \tag{5.4}$$

5.3 Non-triviality of the cobordism map

In our applications in Sect. 6, we will need use classes in $LCH^*(\Lambda_-, \varepsilon_-)$ that are not in the kernel of $\Psi_k^{L, \varepsilon_-}$. The following proposition, which essentially re-contextualizes results from [8] and [19], will be used in Sect. 6.

Proposition 5.3 *Suppose L is a Lagrangian cobordism from Λ_- to Λ_+ that is cylindrical outside $[s_-, s_+]$ and Λ_- has augmentation ε_- . Let $\Psi_1^{L, \varepsilon_-} : LCH^*(\Lambda_-, \varepsilon_-) \rightarrow LCH^*(\Lambda_+, \varepsilon_+)$ be the associated cobordism map.*

(1) *If Λ_\pm are connected and $\lambda_- \in LCH^*(\Lambda_-, \varepsilon_-)$ is the fundamental class, then $\Psi_1^{L, \varepsilon_-}(\lambda_-) \neq 0$.*

³ This is dual to the results of [26, §5.2] on removing obstructions to A_∞ maps being “strict” using bounding cochains.

(2) If \bar{L} denotes $L \cap \{s \in [s_-, s_+]\}$ and the pair (\bar{L}, Λ_-) is acyclic, then $\Psi_1^{L, \varepsilon^-}$ is an isomorphism.

Proof Let $\Phi_{L, \varepsilon_-}^1 : LCH_*(\Lambda_+, \varepsilon_+) \rightarrow LCH_*(\Lambda_-, \varepsilon_-)$ denote the adjoint of $\Psi_1^{L, \varepsilon^-}$. Under the hypothesis that Λ_+ is connected, we can consider its (homology) fundamental class, $\eta_+ \in LCH_n(\Lambda_+, \varepsilon_+)$. As shown in [19, Theorem 7.7], $\Phi_{L, \varepsilon_-}^1(\eta_+)$ is the homology fundamental class in $LCH_n(\Lambda_-, \varepsilon_-)$. Using Eq. (4.3), we have:

$$\begin{aligned} 1 &= \langle \lambda_-, \Phi_{L, \varepsilon_-}^1(\eta_+) \rangle \\ &= \langle \Psi_1^{L, \varepsilon^-}(\lambda_-), \eta_+ \rangle. \end{aligned}$$

In particular, the fundamental class λ_- is not in the kernel of $\Psi_1^{L, \varepsilon^-}$.

Statement (2) follows immediately from a long exact sequence of [8, Theorem 1.6], which relates relative homology groups of a Lagrangian cobordism to the linearized Legendrian Contact Cohomology groups of its ends:

$$\cdots \rightarrow H_{n+1-k}(\bar{L}, \Lambda_-) \rightarrow LCH^k(\Lambda_-, \varepsilon_-) \xrightarrow{\Psi_1^{L, \varepsilon^-}} LCH^k(\Lambda_+, \varepsilon_+) \rightarrow \cdots$$

□

5.4 Cobordisms maps on filtered complexes

We now have the tools to relate the capacities at the top and bottom of a Lagrangian cobordism. We will prove Theorem 5.5, from which Theorem 1.5 will follow as an immediate corollary.

The first step in the proof is to show that the A_∞ cobordism maps ψ^{L, ε^-} respect the filtrations on A_\pm^* .

Lemma 5.4 *Suppose L is a Lagrangian cobordism from Λ_- to Λ_+ that is cylindrical outside of $[s_-, s_+]$; let $\psi_k^{L, \varepsilon^-} : (A_-^*)^{\otimes k} \rightarrow A_+^*$ be the associated A_∞ maps. The image of $F^{w_1/e^{s_-}} A_-^* \otimes \cdots \otimes F^{w_k/e^{s_-}} A_-^*$ under $\psi_k^{L, \varepsilon^-}$ lies in $F^{(w_1 + \cdots + w_k)/e^{s_+}} A_+^*$.*

Proof Recall that $F^{w_i/e^{s_-}} A_-^*$ is generated by the Reeb chords b satisfying $h(b) \geq w_i/e^{s_-}$. Thus it suffices to show that given a set of Reeb chords $\{b_1, \dots, b_k\}$ with $b_i \in F^{w_i/e^{s_-}} A_-^*$, if a appears as a term in $\psi_k^{L, \varepsilon^-}(b_1, \dots, b_k)$, then $h(a) \geq (w_1 + \cdots + w_k)/e^{s_+}$. Given such $\{b_1, \dots, b_k\}$ and a , Lemma 5.1 and the formula for the map $\psi_k^{L, \varepsilon^-}$ in Remark 5.2 show that

$$\mathfrak{a}(a) \geq \sum_i \mathfrak{a}(b_i). \tag{5.5}$$

We now use the definition of the cobordism action \mathfrak{a} , Eq. (5.5), and the fact that $h(b_i) \geq w_i/e^{s_-}$ to see that:

$$\begin{aligned} h(a) &= e^{-s_+} \mathfrak{a}(a) \\ &\geq e^{-s_+} \sum_i \mathfrak{a}(b_i) \end{aligned}$$

$$\begin{aligned}
 &= e^{s-s_+} \sum_i h(b_i) \\
 &\geq e^{-s_+} \sum_i w_i.
 \end{aligned}$$

It follows that each summand of $\psi_k^{L, \varepsilon_-}(b_1, \dots, b_k)$ lies in $F^{(w_1+\dots+w_k)/e^{s_+}} A_+^*$, as desired. \square

We are now ready to state and prove a more general form of Theorem 1.5.

Theorem 5.5 *Suppose L is a Lagrangian cobordism from Λ_- to Λ_+ that is cylindrical outside of $[s_-, s_+]$. For any augmentation ε_- of $(\mathcal{A}_-, \partial_-)$, let $\varepsilon_+ = \varepsilon_- \circ \phi_L$ denote the corresponding augmentation of $(\mathcal{A}_+, \partial_+)$. Then, for any $\{\theta_1, \dots, \theta_k\} \subset LCH^*(\Lambda_-, \varepsilon_-)$,*

$$e^{s_-} \sum_i c(\Lambda_-, \varepsilon_-, \theta_i) \leq e^{s_+} c(\Lambda_+, \varepsilon_+, \Psi_k^{L, \varepsilon_-}(\theta_1, \dots, \theta_k)).$$

In particular, for any augmentation ε_- of Λ_- and any $\theta_1, \dots, \theta_k \in LCH^(\Lambda_-, \varepsilon_-)$ with $\Psi_k^{L, \varepsilon_-}(\theta_1, \dots, \theta_k) \neq 0$, a lower bound to the length of L is given by:*

$$\ell(L) \geq \sum_{i=1}^k \ln c(\Lambda_-, \varepsilon_-, \theta_i) - \ln c(\Lambda_+, \varepsilon_+, \Psi_k^{L, \varepsilon_-}(\theta_1, \dots, \theta_k)). \tag{5.6}$$

Proof We first consider the following commutative diagram, where the right-hand vertical arrow exists by Lemma 5.4:

$$\begin{array}{ccc}
 LCH^*(\Lambda_+, \varepsilon_+) & \xrightarrow{P^{(w_1+\dots+w_k)/e^{s_+}}} & LCH_{(w_1+\dots+w_k)/e^{s_+}}^*(\Lambda_+, \varepsilon_+) \\
 \Psi_k^{L, \varepsilon_-} \uparrow & & \uparrow \Psi_k^{L, \varepsilon_-} \\
 \bigotimes_{i=1}^k LCH^*(\Lambda_-, \varepsilon_-) & \xrightarrow{\bigotimes P^{w_i/e^{s_-}}} & \bigotimes_{i=1}^k LCH_{w_i/e^{s_-}}^*(\Lambda_-, \varepsilon_-)
 \end{array}$$

Next, we rewrite the definition of capacity to help take the cobordism action into account:

$$\begin{aligned}
 e^s c(\Lambda, \varepsilon, \theta) &= e^s \sup\{w/e^s : P^{w/e^s}(\theta) = 0\} \\
 &= \sup\{w : P^{w/e^s}(\theta) = 0\}.
 \end{aligned} \tag{5.7}$$

Fix $\{\theta_1, \dots, \theta_k\} \subset LCH^*(\Lambda_-, \varepsilon_-)$. The commutativity of the diagram above shows that if $P^{w_i/e^{s_-}}(\theta_i) = 0$ for each $i \in \{1, \dots, k\}$, then we have

$$P^{(w_1+\dots+w_k)/e^{s_+}}(\Psi_k^{L, \varepsilon_-}(\theta_1, \dots, \theta_k)) = 0.$$

Equation (5.7) then implies that

$$e^{s_+} c \left(\Lambda_+, \varepsilon_+, \Psi_k^{L, \varepsilon^-}(\theta_1, \dots, \theta_k) \right) \geq \sum w_i,$$

for any w_i with the property that $P^{w_i/e^{s_-}}(\theta_i) = 0$, and the theorem follows.

6 Applications

Having established constructions of Lagrangian cobordisms in Sect. 3 and lower bounds to the length of a Lagrangian cobordism in Theorem 5.5, we proceed to examine the examples outlined in the Introduction: the vertical contractions of Theorem 1.1 in Sect. 6.1, the Hopf links of Theorem 1.2 in Sect. 6.2, the boundary value problem of Question 1.3 in Sect. 6.3, and the loops of Legendrians of Theorem 1.4 in Sect. 6.4.

6.1 Reeb chord contractions

We begin by re-examining the vertical contraction of a Legendrian Λ^σ from Proposition 3.7 in light of Theorem 1.5. In Proposition 3.7, we saw that when $\sigma < 1$, there exist Lagrangian cobordisms from $\Lambda_- = \Lambda$ to $\Lambda_+ = \Lambda^\sigma$ of length arbitrarily close to $\ln(1/\sigma)$. We will apply Theorem 1.5 to give lower bounds on the length of such a cobordism:

Proposition 6.1 *Suppose Λ_- is a connected Legendrian submanifold with an augmentation with the property that all its Reeb chords have length at least u , and Λ_+ is a connected Legendrian submanifold such that all its Reeb chords have length at most v . If L is a Lagrangian cobordism from Λ_- to Λ_+ , then*

$$\ell(L) \geq \ln \frac{u}{v}.$$

Proof By Theorem 1.5 (i.e. Theorem 5.5 with $k = 1$), we know that for any $\theta \in LCH^*(\Lambda_-, \varepsilon_-)$ that is not in $\ker \Psi_1^{L, \varepsilon^-}$,

$$\ell(L) \geq \ln c(\Lambda_-, \varepsilon_-, \theta) - \ln c(\Lambda_+, \varepsilon_+, \Psi_1^{L, \varepsilon^-}(\theta)).$$

We also know, by Lemma 4.7, that as long as $\Psi_1^{L, \varepsilon^-}(\theta)$ is nonzero,

$$u \leq c(\Lambda_-, \varepsilon_-, \theta) \text{ and } c(\Lambda_+, \varepsilon_+, \Psi_1^{L, \varepsilon^-}(\theta)) \leq v.$$

By Proposition 5.3, our result follows by taking θ to be the fundamental class. □

Theorem 1.1 follows immediately from Propositions 3.7 and 6.1.

Remark 6.2 For a connected Legendrian Λ with an augmentation and with Reeb chords of lengths $h_1 \leq h_2 \leq \dots \leq h_n$, for sufficiently small σ , namely $\sigma h_n < h_1$, Proposition 6.1 will give an obstruction to arbitrarily short Lagrangian cobordisms from Λ to Λ^σ . However, there is a gap between the upper and lower bounds to the length of a Lagrangian cobordism given by, respectively, Proposition 3.7 and Proposition 6.1. The challenge to getting better lower bounds is to understand properties of the cobordism map $\Psi_1^{L, \varepsilon_-}$ and the induced augmentation $\varepsilon_+ = \varepsilon_- \circ \phi_L$.

6.2 Lagrangians with linked boundaries

For our second application, we show that the length of a Lagrangian cobordism between two 2-component links can differ significantly from the lengths of cobordisms between individual pairs of components.

More specifically, let $U^n(1)$ denote a Legendrian submanifold with precisely one Reeb chord of height 1. Form the Hopf link $H(v)$ of two components from this Legendrian sphere and a vertical translate:

$$H(v) = U^n(1) \cup (U^n(1))_\varepsilon^v, \quad 0 < v < 1,$$

where $(U^n(1))_\varepsilon^v$ is a small horizontal dilation of the vertical translate so as to make the link chord generic. We now consider Lagrangian cobordisms between $H(u)$ and $H(v)$, $0 < u, v < 1$. Recall that in Corollary 3.4, we showed that there always exists an arbitrarily short Lagrangian cobordism between $\Lambda_- = (U^n(1))_\varepsilon^u$ and its vertical translate $\Lambda_+ = (U^n(1))_\varepsilon^v$, for any u, v . In particular, the vertical shifting between individual components of the Hopf links can be achieved with arbitrarily short cobordisms. When considering cobordisms between links, however, Remark 3.5 hints that realizing vertical shifts in the presence of another cobordism could require a longer cobordism. We will apply the the obstruction given by Theorem 1.5 and the constructions from Sect. 3 to show a higher dimensional version of Theorem 1.2:

Theorem 6.3 *Any Lagrangian cobordism from $\Lambda_- = H(u)$ to $\Lambda_+ = H(v)$ composed of two Lagrangian cylinders that join the upper (resp. lower) component of $H(u)$ to the upper (resp. lower) component of $H(v)$ has length at least*

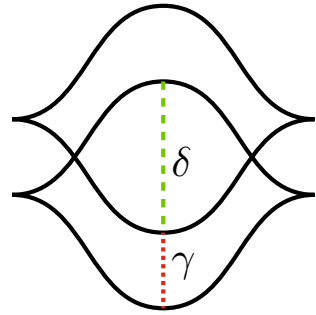
- $\ln \frac{1-u}{1-v}$ if $u \leq v$ and
- $\ln \frac{u}{v}$ if $u \geq v$,

and the bounds are the best possible.

Proof We begin by proving the claimed lower bound on the length of a cobordism L from $\Lambda_- = H(u)$ to $\Lambda_+ = H(v)$. To do so, we find nontrivial classes in the Legendrian Contact Cohomology of $H(u)$ and compute their associated capacities.

We may assume that $H(u)$ has exactly six Reeb chords, one between each pair of strands at the midpoint of the (spun) front diagram in Fig. 6. As discussed in Example 4.8, each component of $H(u)$ has a (trivial) augmentation, and hence $H(u)$ itself does; call it ε_u . With respect to this trivial augmentation, we use Mishachev’s homotopy splitting [34] to decompose the vector space $A_{H(u)}$ into four subcomplexes,

Fig. 6 The chords γ_u and δ_{1-u} each yield a non-zero class in $LCH^*(H(u), \varepsilon)$



one for each ordered pair of components; a Reeb chord is a generator of the subcomplex corresponding to its lower and upper ends. The chord δ_{1-u} depicted in Fig. 6 is the sole generator of its subcomplex, and hence yields a cohomology class $[\delta_{1-u}]$. The chord γ_u , on the other hand, is one of three chords generating its subcomplex, but the argument in [4, §6]⁴ shows that it must yield a cohomology class $[\gamma_u]$. It follows immediately from Lemma 4.7 that the capacities of these classes are:

$$\begin{aligned} c(H(u), \varepsilon_u, [\gamma_u]) &= u, \\ c(H(u), \varepsilon_u, [\delta_{1-u}]) &= 1 - u. \end{aligned} \tag{6.1}$$

Suppose L is a Lagrangian cobordism from $\Lambda_- = H(u)$ to $\Lambda_+ = H(v)$. To apply Theorem 1.5, we begin by asserting that it is clear that the cobordism map $\Psi_1^{L, \varepsilon_u}$ preserves Mishachev’s homotopy splitting. Combining this fact with Proposition 5.3, we see that $\Psi_1^{L, \varepsilon_u}([\gamma_u]) = [\gamma_v]$ and that $\Psi_1^{L, \varepsilon_u}([\delta_{1-u}]) = [\delta_{1-v}]$. Theorem 1.5 then gives the stated lower bounds:

$$\ell(L) \geq \max \left\{ \ln \frac{1-u}{1-v}, \ln \frac{u}{v} \right\} = \begin{cases} \ln \frac{1-u}{1-v}, & u < v \\ \ln \frac{u}{v}, & u > v. \end{cases}$$

To see that these bounds are the best possible, we apply Lemmas 3.1 and 3.2. Namely, consider a smooth function $\rho(s)$ so that $\rho(s) = u$ for $s \leq 0$ and $\rho(s) = v$ for $s \geq A$. Parameterize Λ by $(x(t), y(t), z(t))$ for $t \in \Sigma$. Let Σ_1, Σ_2 be disjoint copies of Σ and consider the Legendrian embedding $\lambda_s(\Sigma_1 \cup \Sigma_2)$ given by

$$\lambda_s(t) = \begin{cases} ((1 + \epsilon)x(t), y(t)/(1 + \epsilon), z(t) + \rho(s)), & t \in \Sigma_2 \\ (x(t), y(t), z(t)), & t \in \Sigma_1 \end{cases}.$$

⁴ While the calculation in [4, §6] is ostensibly for generating family homology, the same argument works for Legendrian contact homology as only length and grading of Reeb chords are used.

It follows that

$$\eta(s, t) - \eta(s, t') = \begin{cases} -\rho'(s), & t \in \Sigma_1, t' \in \Sigma_2 \\ \rho'(s), & t \in \Sigma_2, t' \in \Sigma_1 \\ 0, & t, t' \in \Sigma_i. \end{cases}$$

The Hopf link $\Lambda_s = \text{im } \lambda_s$ has six Reeb chords. By Lemma 3.2, it suffices to choose $\rho(s)$ so that for each of these six Reeb chords, the height of the Reeb chord from $\lambda_s(t)$ to $\lambda_s(t')$ does not equal $\eta(s, t) - \eta(s, t')$.

Two Reeb chords begin and end on the same component and have height 1. These Reeb chords give no obstruction to embedding since $1 \neq 0 = \eta(s, t) - \eta(s, t')$.

There are two Reeb Chords of height $\rho(s)$ that come from $t \in \Sigma_1, t' \in \Sigma_2$. For these Reeb chords, the embedding condition is $\rho(s) \neq -\rho'(s)$, or equivalently $\frac{d}{ds}(e^s \rho(s)) \neq 0$. Thus, we are required to choose $\rho(s)$ so that $e^s \rho(s)$ is a strictly increasing function and so that

$$u = e^0 \rho(0) < e^A \rho(A) = e^A v. \tag{6.2}$$

When $u < v$, we may find a $\rho(s)$ that satisfies Eq. 6.2 for any $A > 0$. When $u > v$, we may find a $\rho(s)$ that satisfies Eq. 6.2 so long as $A > \ln u/v$.

There will be one Reeb chord of height $1 - \rho(s)$ coming from $t \in \Sigma_2, t' \in \Sigma_1$. For this Reeb chord, the embedding condition is $1 - \rho(s) \neq \rho'(s)$, or equivalently $\frac{d}{ds}(e^s(\rho(s) - 1)) \neq 0$. Since $\rho(s) - 1 < 0$, we now want to choose $\rho(s)$ so that $e^s(\rho(s) - 1)$ is a strictly decreasing function. If $u < v$, finding an appropriate ρ is possible as long as $A > \ln \frac{1-u}{1-v}$. If $u > v$, we may find an appropriate $\rho(s)$ for any $A > 0$.

The one remaining Reeb chord has height $1 + \rho(s)$ and comes from $t \in \Sigma_1, t' \in \Sigma_2$. For this Reeb chord, the embedding condition is: $1 + \rho(s) \neq -\rho'(s)$, or equivalently $\frac{d}{ds}(e^s(\rho(s) + 1)) \neq 0$. If $u < v$, $e^s(\rho(s) + 1)$ is guaranteed to be a strictly increasing function by choosing $\rho(s)$ to be an increasing function. When $u > v$, embeddedness can be guaranteed as long as $(e^s \rho(s) + 1)|_{s=0} < (e^s \rho(s) + 1)|_{s=A}$, equivalently $A > \ln \frac{u+1}{v+1}$. However, this is not a new restriction: we already know that when $u > v$, we need $A > \ln \frac{u}{v}$, and since $\ln \frac{u}{v} > \ln \frac{u+1}{v+1}$, this Reeb chord introduces no new restrictions. □

6.3 Packing Lagrangian cylinders

In the previous section, we examined the minimum length of a cobordism between two different Hopf links. Now we turn this question around and ask: if a Lagrangian cobordism has length 1, which links of unknots can appear as the boundaries? More precisely, we form a $(k + 1)$ -copy of the Legendrian submanifold $U^n(1)$, where each copy is vertically translated by v_i and then slightly dilated horizontally so that the resulting link, $H(v_1, \dots, v_k)$ is chord generic:

$$H(v_1, \dots, v_k) = U^n(1) \cup (U^n(1))_{\epsilon_1}^{v_1} \cup \dots \cup (U^n(1))_{\epsilon_k}^{v_k} \quad 0 < v_1 < \dots < v_k < 1,$$

When $v_i = \frac{i}{k+1}$, for each $i \in \{1, \dots, k\}$, we call $H\left(\frac{1}{k+1}, \dots, \frac{k}{k+1}\right)$ the **evenly shifted $(k + 1)$ -copy** of $U^n(1)$.

We return to the question asked in Question 1.3: fix the evenly shifted $(k + 1)$ -copy as the negative boundary condition for the Lagrangian cobordism. Which shifted $(k + 1)$ -copies $H(v_1, \dots, v_n)$ can appear as the positive boundary of a Lagrangian cobordism of length one? See Fig. 3.

For the 2-copy ($k = 1$), the question reduces to: for which v does there exist a Lagrangian cobordism L from $\Lambda_- = H(1/2)$ to $\Lambda_+ = H(v)$ with $\ell(L) \leq 1$? This question was essentially answered in the previous section. Theorem 6.3 shows that such a cobordism exists if and only if

$$\frac{1}{2e} \leq v \leq 1 - \frac{1}{2e}.$$

Using similar techniques, we may answer the question for arbitrary k :

Theorem 6.4 *If there exists a Lagrangian cobordism of length 1 from the evenly spaced $(k + 1)$ -copy H to the shifted $(k + 1)$ -copy $H(v_1, \dots, v_n)$ composed of $(k + 1)$ Lagrangian cylinders joining corresponding components, then*

$$\frac{i - j}{(k + 1)e} \leq v_i - v_j \leq 1 - \frac{(k + 1) - (i - j)}{(k + 1)e},$$

where $i \in \{1, \dots, k\}$, $j \in \{0, \dots, k - 1\}$, $i > j$, and $v_0 = 0$. These bounds are the best possible.

In the case of the 3-copy, these inequalities are visualized in Fig. 4.

Proof The proof relies on rewriting the last inequality in Theorem 1.5 in the case of a cobordism of length at most 1:

$$c\left(\Lambda_+, \varepsilon_+, \Psi_1^{L, \varepsilon_-}(\theta)\right) \geq \frac{1}{e} c\left(\Lambda_-, \varepsilon_-, \theta\right). \tag{6.3}$$

Fix the trivial augmentation ε_- on H . For each pair of components of the $(k + 1)$ -copy, we will apply Eq. (6.3) to cohomology classes corresponding to δ and γ in the proof of Theorem 6.3. As in the proof of Theorem 6.3, Mishachev’s homotopy splitting implies that the computation of $LCH^*(H, \varepsilon_-)$ and $LCH^*(H(v_1, \dots, v_n), \varepsilon_+)$ splits into computations entirely similar to that for $LCH^*(H(u), \varepsilon)$. In particular, we obtain two non-trivial classes $[\gamma_{ij}^\pm]$ and $[\delta_{ij}^\pm]$ for every pair of components $i > j$.

As before, the capacity of each generator is easy to compute from the length of the associated Reeb chord:

$$\begin{aligned} c(H, \varepsilon_-, [\gamma_{ij}^-]) &= \frac{i - j}{k + 1}, & c(H(v_1, \dots, v_n), \varepsilon_+, [\gamma_{ij}^+]) &= v_i - v_j \\ c(H, \varepsilon_-, [\delta_{ij}^-]) &= 1 - \frac{i - j}{k + 1}, & c(H(v_1, \dots, v_n), \varepsilon_+, [\delta_{ij}^+]) &= 1 - (v_i - v_j). \end{aligned}$$

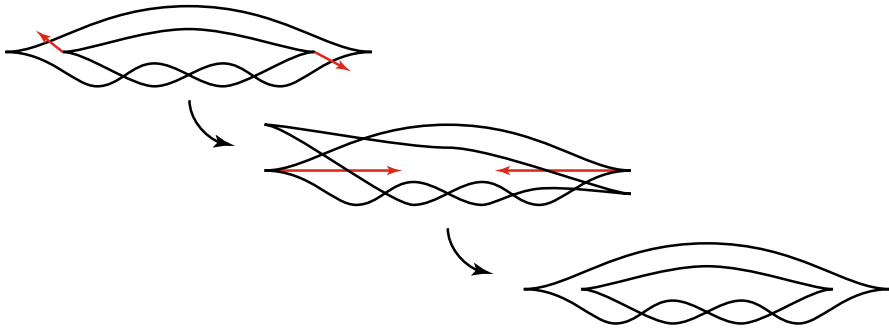


Fig. 7 A non-trivial loop of Legendrian trefoils

Proposition 5.3 and the fact that $\Psi_1^{L,\varepsilon-}$ preserves the homotopy splitting together imply that $\Psi_1^{L,\varepsilon-}([\gamma_{ij}^-]) = [\gamma_{ij}^+]$ and $\Psi_1^{L,\varepsilon-}([\delta_{ij}^-]) = [\delta_{ij}^+]$. The bounds in the theorem now follow from applying (6.3) to the capacities computed above.

The construction to show that the bounds in the theorem are the best possible is entirely similar to that in Theorem 1.2, where once again the restrictions on the auxiliary function $\rho(s)$ precisely match the capacity inequalities. \square

6.4 Non-trivial loops of isotopies

Non-trivial loops of Legendrian isotopies yield another interesting set of Lagrangian cobordisms. To clarify the meaning of a non-trivial loop of isotopies, if $\mathcal{L}(M, \xi)$ is the space of Legendrian submanifolds of (M, ξ) , suitably topologized, then we consider non-trivial elements of $\pi_1(\mathcal{L}(M, \xi), \Lambda)$, especially those that are contractible in the space of smooth submanifolds. The first such example, due to Kálmán [32], is the loop of Legendrian trefoils in the standard contact \mathbb{R}^3 pictured in Fig. 7. We will also consider a higher-dimensional example due to the first author and Sullivan [38].

First, consider the Lagrangian projection of the Legendrian trefoil shown in Fig. 8. It is straightforward to compute using the inequalities in [32, Example 2.7] that if the heights of the Reeb chords satisfy the following constraints, then we obtain a valid Lagrangian diagram:

$$\begin{aligned} h(a_1) &> h(b_1) + h(b_2) + h(b_3), \\ h(a_2) + h(b_1) + h(b_3) &> 2h(a_1). \end{aligned} \tag{6.4}$$

Let us denote $h(b_1) = h(b_3)$ by h_1 and $h(b_2)$ by h_2 .

Proposition 6.5 *Let L denote a Lagrangian cobordism induced by Kálmán’s non-trivial isotopy. For any $L' \in [L]$, the length of L' is bounded below by $|\ln h_1 - \ln h_2|$.*

Proof A standard computation, as in [32, Example 2.7], shows that the generators a_1, a_2 of the Legendrian contact homology algebra have degree 1 and that the others have degree 0. Further, following [32, Example 2.14], we may compute the differential to be:

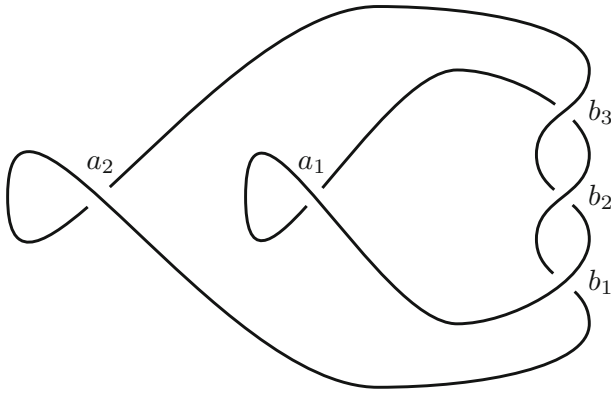


Fig. 8 The Lagrangian projection of the trefoil that Kálmán uses as the base point for his non-trivial loop of Legendrians

$$\begin{aligned} \partial a_1 &= 1 + b_1 + b_3 + b_1 b_2 b_3 \\ \partial a_2 &= b_2 + b_2 b_3 + b_1 b_2 + b_2 b_3 b_1 b_2 \\ \partial b_1 &= \partial b_2 = \partial b_3 = 0. \end{aligned}$$

Fixing the augmentations ε_- that sends b_1 to 1 and all other generators to 0 and ε_+ that sends both b_1 and b_2 to 1 and all other generators to 0, we may compute that

$$\begin{aligned} LCH^*(\Lambda, \varepsilon_-) &= \langle [a_2], [b_2], [b_1 + b_3] \rangle \\ LCH^*(\Lambda, \varepsilon_+) &= \langle [a_1] = [a_2], [b_2], [b_3] \rangle. \end{aligned}$$

Since we computed linearized cohomology above, we had to change coordinates, linearize the differential ∂^ε , and then take adjoints to obtain d^ε .

Using the fact that Chekanov’s original description of the maps between LCH algebras induced by Reidemeister moves coincides with the chain-level cobordism map ϕ_L when L is induced by the corresponding Reidemeister move [19], we may say that in [32, Example 3.6], Kálmán computes the cobordism map for the Lagrangian induced by his loop of trefoils on the b_* generators to be:

$$\begin{aligned} \phi_L(b_1) &= 1 + b_2 b_3 \\ \phi_L(b_2) &= b_1 \\ \phi_L(b_3) &= b_2 \end{aligned}$$

We have made the obvious identification of the generators at the top and bottom of the cobordism. We see immediately that $\varepsilon_+ = \varepsilon_- \circ \phi_L$.

Finally, we compute the linearized cobordism map on the b_* generators to be:

$$\begin{aligned} \psi_1^{L, \varepsilon_-}(b_1) &= b_2 \\ \psi_1^{L, \varepsilon_-}(b_2) &= b_3 \\ \psi_1^{L, \varepsilon_-}(b_3) &= 0. \end{aligned}$$

On cohomology, we see that $\Psi_1^{L, \varepsilon_-}$ sends $[b_1 + b_3]$ to $[b_2]$ and $[b_2]$ to $[b_3]$. Applying Theorem 1.5 to this cobordism map yields the inequalities

$$\begin{aligned} \ell(L) &\geq \ln c(\Lambda, \varepsilon_-, [b_1 + b_3]) - \ln c(\Lambda, \varepsilon_+, [b_2]) = \ln h_1 - \ln h_2, \\ \ell(L) &\geq \ln c(\Lambda, \varepsilon_-, [b_2]) - \ln c(\Lambda, \varepsilon_+, [b_3]) = \ln h_2 - \ln h_1. \end{aligned}$$

We conclude that the length of the cobordism L induced by Kálmán’s nontrivial isotopy is bounded below by $|\ln h_1 - \ln h_2|$. \square

By choosing h_1 and h_2 appropriately, Proposition 6.5 proves the second half of Theorem 1.4:

Corollary 6.6 *For any $b > 0$, there exists a non-trivial loop γ of Legendrian submanifolds with induced Lagrangian cobordism L_γ such that the length of any Lagrangian cobordism in $[L_\gamma]$ is bounded below by b .*

The first half of Theorem 1.4 follows from the following proposition:

Proposition 6.7 *There exists a non-trivial loop γ of Legendrian n -spheres in $J^1\mathbb{R}^n$ with induced Lagrangian cobordism L_γ such that $[L_\gamma]$ contains arbitrarily short cobordisms.*

Proof In [38], the first author and Sullivan constructed a non-contractible loop of Legendrian n -spheres in $J^1\mathbb{R}^n$. Briefly, the base point Λ of the loop is constructed by first forming a sphere Λ^r for $r \gg n$ using spinning and surgery; see Fig. 9a for a schematic picture. Two copies of Λ^r , with one component shifted in the x_1 direction and rotated by π , are then joined together to form Λ using a connect sum, as in Fig. 9b. The loop itself is simple to describe: rotate the front projection of Λ by π in the \mathbf{x} coordinates. This rotation extends to a form-preserving diffeomorphism of $J^1\mathbb{R}^n$, so Corollary 3.6 implies that cobordisms induced by this isotopy may be arbitrarily short. \square

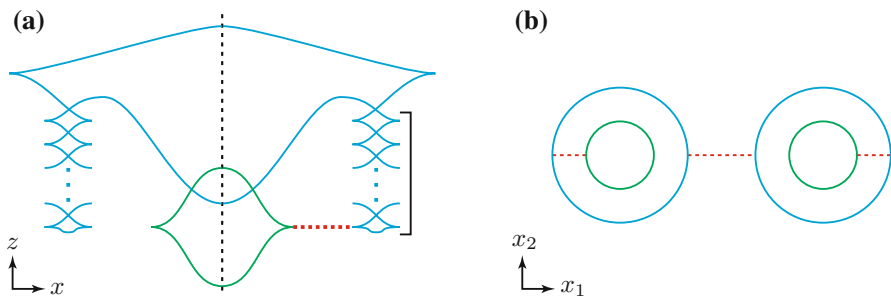


Fig. 9 **a** A Legendrian sphere is obtained after spinning the diagram and then performing surgery along the dotted line. **b** Via an additional surgery, a connect sum of two copies of this sphere produces a sphere that has a front projection that is invariant under a 180° rotation of the \mathbf{x} -coordinates. This rotation produces a non-trivial loop of Legendrian spheres [38]

Acknowledgements We thank Baptiste Chantraine and Richard Hind for several stimulating conversations about the foundations of capacities and the example in Sect. 6.2, respectively. We also thank the referee for insightful suggestions.

References

1. Audin, M., Lalonde, F., Polterovich, L.: Symplectic Rigidity: Lagrangian submanifolds, Holomorphic Curves in Symplectic Geometry, Progress in Mathematics, vol. 117, pp. 271–321. Birkhäuser, Basel (1994)
2. Bourgeois, F., Chantraine, B.: Bilinearized Legendrian contact homology and the augmentation category. *J. Symplectic Geom.* **12**(3), 553–583 (2014)
3. Bourgeois, F., Eliashberg, Ya., Hofer, H., Wysocki, K., Zehnder, E.: Compactness results in symplectic field theory. *Geom. Topol.* **7**, 799–888 (2003)
4. Bourgeois, F., Sabloff, J., Traynor, L.: Lagrangian cobordisms via generating families: construction and geography. *Algebr. Geom. Topol.* **15**(4), 2439–2477 (2015)
5. Chantraine, B.: On Lagrangian concordance of Legendrian knots. *Algebr. Geom. Topol.* **10**, 63–85 (2010)
6. Chantraine, B.: A note on exact Lagrangian cobordisms with disconnected Legendrian ends. *Proc. Am. Math. Soc.* **143**(3), 1325–1331 (2015)
7. Chantraine, B., Dimitroglou Rizell, G., Ghiggini, P., Golovko, R.: Floer homology and Lagrangian concordance. In: Proceedings of the Gökova Geometry–Topology Conference 2014, pp. 76–113 .Gökova Geometry/Topology Conference (GGT), Gökova (2015)
8. Chantraine, B., Dimitroglou Rizell, G., Ghiggini, P., Golovko, R.: Floer theory for Lagrangian cobordisms. (2015). Preprint available as [arXiv:1511.09471](https://arxiv.org/abs/1511.09471)
9. Chekanov, Yu.: Differential algebra of Legendrian links. *Invent. Math.* **150**, 441–483 (2002)
10. Civan, G., Etnyre, J., Koprowski, P., Sabloff, J., Walker, A.: Product structures for Legendrian contact homology. *Math. Proc. Camb. Philos. Soc.* **150**(2), 291–311 (2011)
11. Dimitroglou Rizell, G.: Legendrian ambient surgery and Legendrian contact homology. (2012). Preprint available as [arXiv:1205.5544v1](https://arxiv.org/abs/1205.5544v1)
12. Dimitroglou Rizell, G.: Lifting pseudo-holomorphic polygons to the symplectisation of $P \times \mathbb{R}$ and applications. *Quantum Topol.* **7**(1), 29–105 (2016)
13. Ekholm, T.: Rational symplectic field theory over \mathbb{Z}_2 for exact Lagrangian cobordisms. *J. Eur. Math. Soc. (JEMS)* **10**(3), 641–704 (2008)
14. Ekholm, T.: Rational SFT, linearized Legendrian contact homology, and Lagrangian Floer cohomology. In: Perspectives in Analysis, Geometry, and Topology, Progress in Mathematics, vol. 296, pp. 109–145. Birkhäuser/Springer, New York (2012)
15. Ekholm, T., Etnyre, J., Sabloff, J.: A duality exact sequence for Legendrian contact homology. *Duke Math. J.* **150**(1), 1–75 (2009)
16. Ekholm, T., Etnyre, J., Sullivan, M.: The contact homology of Legendrian submanifolds in \mathbb{R}^{2n+1} . *J. Differential Geom.* **71**(2), 177–305 (2005)
17. Ekholm, T., Etnyre, J., Sullivan, M.: Non-isotopic Legendrian submanifolds in \mathbb{R}^{2n+1} . *J. Differential Geom.* **71**(1), 85–128 (2005)
18. Ekholm, T., Etnyre, J., Sullivan, M.: Legendrian contact homology in $P \times \mathbb{R}$. *Trans. Am. Math. Soc.* **359**(7), 3301–3335 (2007). (electronic)
19. Ekholm, T., Honda, K., Kálmán, T.: Legendrian knots and exact Lagrangian cobordisms. (2012). Preprint available as [arXiv:1212.1519](https://arxiv.org/abs/1212.1519)
20. Eliashberg, Y.: Invariants in contact topology. In: Proceedings of the International Congress of Mathematicians, vol. II (Berlin, 1998), no. extra vol. II, pp. 327–338 (1998) (electronic)
21. Eliashberg, Ya., Givental, A., Hofer, H.: Introduction to symplectic field theory. *Geom. Funct. Anal.* (no. Special Volume, Part II), 560–673 (2000)
22. Eliashberg Ya., Gromov, M.: Lagrangian intersection theory: finite-dimensional approach. In: Geometry of Differential Equations, American Mathematical Society Translations: Series 2, vol. 186, pp. 27–118. American Mathematical Society, Providence, RI (1998)
23. Etnyre, J.: Legendrian and Transversal Knots, Handbook of Knot Theory. Elsevier B. V, Amsterdam (2005)

24. Fuchs, D.: Chekanov–Eliashberg invariant of Legendrian knots: existence of augmentations. *J. Geom. Phys.* **47**(1), 43–65 (2003)
25. Fuchs, D., Ishkhanov, T.: Invariants of Legendrian knots and decompositions of front diagrams. *Mosc. Math. J.* **4**(3), 707–717 (2004)
26. Fukaya, K., Oh, Y-G., Ohta, H., Ono, K.: *Lagrangian Intersection Floer Theory: Anomaly and Obstruction. Parts I and II*, AMS/IP Studies in Advanced Mathematics, vol. 46. American Mathematical Society, Providence, RI (2009)
27. Golovko, R.: A note on Lagrangian cobordisms between Legendrian submanifolds of \mathbb{R}^{2n+1} . *Pac. J. Math.* **261**(1), 101–116 (2013)
28. Golovko, R.: A note on the front spinning construction. *Bull. Lond. Math. Soc.* **46**(2), 258–268 (2014)
29. Gromov, M.: Pseudoholomorphic curves in symplectic manifolds. *Invent. Math.* **82**, 307–347 (1985)
30. Hutchings, M.: Quantitative embedded contact homology. *J. Differ. Geom.* **88**(2), 231–266 (2011)
31. Kadeišvili, T.: On the theory of homology of fiber spaces. *Uspekhi Mat. Nauk* **35** (1980), no. 3(213), 183–188, International Topology Conference (Moscow State University, Moscow, 1979)
32. Kálmán, T.: Contact homology and one parameter families of Legendrian knots. *Geom. Topol.* **9**, 2013–2078 (2005). (electronic)
33. Melvin, P., Shrestha, S.: The nonuniqueness of Chekanov polynomials of Legendrian knots. *Geom. Topol.* **9**, 1221–1252 (2005)
34. Mishachev, K.: The n -copy of a topologically trivial Legendrian knot. *J. Symplectic Geom.* **1**(4), 659–682 (2003)
35. Ng, L., Rutherford, D., Shende, V., Sivek, S., and Zaslow, E.: Augmentations are sheaves. (2015). Preprint available as [arXiv:1502.04939](https://arxiv.org/abs/1502.04939)
36. Sabloff, J.: Augmentations and rulings of Legendrian knots. *Int. Math. Res. Notes* **19**, 1157–1180 (2005)
37. Sabloff, J.: Duality for Legendrian contact homology. *Geom. Topol.* **10**, 2351–2381 (2006). (electronic)
38. Sabloff, J., Sullivan, M.: Families of Legendrian submanifolds via generating families. *Quantum Topol.* (to appear). [arXiv:1311.0528](https://arxiv.org/abs/1311.0528)
39. Sabloff, J., Traynor, L.: Obstructions to the existence and squeezing of Lagrangian cobordisms. *J. Topol. Anal.* **2**(2), 203–232 (2010)
40. Sabloff, J., Traynor, L.: Obstructions to Lagrangian cobordisms between Legendrian submanifolds. *Algebr. Geom. Topol.* **13**, 2733–2797 (2013)
41. Seidel, Paul: *Fukaya categories and Picard–Lefschetz theory*. European Mathematical Society (EMS), Zürich, Zurich Lectures in Advanced Mathematics (2008)
42. Viterbo, C.: Symplectic topology as the geometry of generating functions. *Math. Ann.* **292**(4), 685–710 (1992)