

Effective field theory amplitudes the on-shell way: scalar and vector couplings to gluons

Yael Shadmi and Yaniv Weiss

*Physics Department, Technion — Israel Institute of Technology,
Technion City, Haifa 3200003, Israel*

E-mail: yshadmi@physics.technion.ac.il, yanivwe@campus.technion.ac.il

ABSTRACT: We use on-shell methods to calculate tree-level effective field theory (EFT) amplitudes, with no reference to the EFT operators. Lorentz symmetry, unitarity and Bose statistics determine the allowed kinematical structures. As a by-product, the number of independent EFT operators simply follows from the set of polynomials in the Mandelstam invariants, subject to kinematical constraints. We demonstrate this approach by calculating several amplitudes with a massive, SM-singlet, scalar (h) or vector (Z') particle coupled to gluons. Specifically, we calculate $hggg$, $hhgg$ and $Z'ggg$ amplitudes, which are relevant for the LHC production and three-gluon decays of the massive particle. We then use the results to derive the massless- Z' amplitudes, and show how the massive amplitudes decompose into the massless-vector plus scalar amplitudes. Amplitudes with the gluons replaced by photons are straightforwardly obtained from the above.

KEYWORDS: Beyond Standard Model, Effective Field Theories, Space-Time Symmetries

ARXIV EPRINT: [1809.09644](https://arxiv.org/abs/1809.09644)

Contents

1	Introduction and outline	1
2	Scalar plus gluon amplitudes	4
2.1	The scalar plus two gluon amplitude $\mathcal{M}(h; gg)$	4
2.2	The scalar plus 3 gluon amplitudes $\mathcal{M}(h; ggg)$	5
2.2.1	Three-gluon vertices	7
2.2.2	The $h; + + +$ amplitude	7
2.2.3	The $h; + + -$ amplitude	9
2.2.4	Inferring the EFT Lagrangian	10
2.3	The two scalar, two gluon amplitudes $\mathcal{M}(hh; gg)$	10
2.3.1	The $3h$ vertex	12
2.3.2	The $hh; ++$ amplitude	12
2.3.3	The $hh; +-$ amplitude	12
2.3.4	Inferring the EFT	13
3	The vector plus three gluon amplitudes $\mathcal{M}(Z'; ggg)$	13
3.1	The $Z'; + + +$ amplitude	15
3.2	The $Z'; - - +$ amplitude	16
3.3	The massless Z' amplitudes	17
4	Conclusions	20
A	Notation	21
B	High energy limit	23

1 Introduction and outline

Effective field theories (EFTs) provide a systematic and largely model-independent parameterization of beyond the standard model (BSM) effects. They have taken center-stage recently, in response to the lack of hints for BSM physics at LHC experiments, and the attendant, and welcome, theoretical uncertainty as to the form BSM physics might take. EFTs are well motivated and in principle, straightforward to use. In practice however, their application is quite involved. Non-renormalizable operators give rise to vertices with large numbers of external legs and/or derivatives, adding to the complexity of Feynman-diagrammatic gauge theory calculations. Furthermore, the very first step in an EFT calculation is the identification of the full set of independent operators. This has been the subject of intense study in recent years [1–7].

Ultimately, however, the quantities of interest are physical observables, obtained from on-shell amplitudes. When calculating these observables, the inter-dependencies of various EFT operators should be manifest. Thus, we propose to bypass EFT Lagrangians altogether, and quantify possible deviations from the SM directly at the level of physical scattering amplitudes. We consider a low-energy theory below some scale Λ . The amplitudes in this low-energy theory are constrained by Lorentz symmetry, unitarity, and Bose or Fermi statistics. These determine the different kinematical structures that can appear at any dimension, accompanied by the appropriate negative power of the scale Λ . Each of these structures appears with some unknown numerical coefficient. From the Lagrangian point of view, the number of these unknown parameters equals the number of independent operators at a given dimension. Thus, a by-product of the on-shell computation is a counting of independent EFT operators. This counting is extremely simple, since we are counting independent terms in polynomials of the kinematic invariants, $s_{ij} = (p_i + p_j)^2$, subject to kinematical constraints, as opposed to the Hilbert series associated with polynomials of operators (see also [6, 8]).

We apply on-shell methods to calculate EFT amplitudes in two scenarios. In the first, we augment the SM by a massive spin-0, gauge singlet, h , with couplings to gluons, and consider an EFT comprised of h and the gluons.¹ We calculate tree-level amplitudes with one scalar and three gluons, as well as amplitudes with two scalars and two gluons. Thus we reproduce some of the results of [9, 10], where Higgs plus n -gluon amplitudes were derived for the SM dimension-5 top loop operator. However, we are interested in the most general EFT coupling the scalar to the gluons, and our derivation captures the contributions of additional higher-dimension operators, up to dimension 13. For our second example, we consider a spin-1, gauge singlet, Z' , which couples to gluons, and calculate the vector plus three gluon amplitude, $\mathcal{M}(Z'; ggg)$. We then take the massless limit to derive the amplitudes with a massless Z' . Throughout, we ignore quarks.

Let us sketch our approach using the single h plus three gluon amplitude, $\mathcal{M}(h; ggg)$, as an example. Little group considerations determine the dependence of the amplitude on spinor-products associated with the gluon momenta $p_{i=1,2,3}$. The spinor-product factor can be multiplied by some analytic function of the s_{ij} 's and Λ , $f(s_{ij}; \Lambda)$. At tree level, the only possible structures that can appear in $f(s_{ij}; \Lambda)$ are single-particle poles in the s_{ij} 's plus non-negative powers of the s_{ij} . The former constitute the factorizable part of the amplitude, and are completely determined by the relevant three-point amplitudes. In the case at hand, these are the two possible three-gluon helicity amplitudes, and $\mathcal{M}(h; gg)$. Thus, they introduce three independent parameters: one for $\mathcal{M}(hgg)$, where only equal gluon helicities can appear (with the convention that all external particles are incoming), one for the $++-$ three-gluon amplitude, corresponding to the usual QCD coupling, and one for the $+++$ three-gluon amplitude, generated by the dimension-six gluonic operator $\text{Tr}(G^3)$. The non-negative powers of the s_{ij} 's arise from non-renormalizable operators involving a single h and three gluons. These constitute the non-factorizable part of the amplitude, which is our focus here. Symmetrizing over same-helicity gluons and imposing

¹ h can be thought of either as the SM Higgs, or as a new spin-0 particle.

the kinematical constraints eliminates many of the possible structures. The remaining terms appear with unknown coefficients. These correspond to the Wilson coefficients of EFT operators, and their number gives the number of independent operators.

Alternatively, one could derive the amplitude by writing the most general ansatz for the function $f(s_{ij}; \Lambda)$, and requiring the correct factorization in the different possible collinear limits [11]. With complex momenta, this correctly captures all the relevant three-point amplitudes, including those that vanish on-shell. In particular, it is easy to see that the only collinear singularities arise from the QCD three-gluon couplings, while higher-dimension operators do not introduce any collinear singularities. This generalizes the dimensional-analysis argument of [12] that the operator $\text{Tr}(G^3)$ does not introduce any collinear singularities.

As mentioned above, the $++-$ three-gluon amplitude is associated with the renormalizable QCD coupling, while the $+++$ amplitude corresponds to a $1/\Lambda^2$ coupling. This behavior is generic: at leading order, amplitudes of different net helicities are generated by operators of different dimensionality [13, 14]. We will see that this fact emerges very simply from little group and dimensional analysis considerations. Thus, by constructing the full set of helicity amplitudes associated with a given process, one essentially scans over the full set of operators of interest.

To illustrate the counting of operators in this approach, consider an even simpler example, with a massless real scalar ϕ , with a quartic coupling but no cubic coupling. We can obtain the number of independent higher-dimension operators containing four ϕ 's by considering the 4ϕ amplitude,

$$\mathcal{M}(p_1, p_2, p_3, p_4) = c_4 + c_6 \frac{(s_{12} + \dots)}{\Lambda^2} + c_8 \frac{(s_{12}^2 + \dots)}{\Lambda^4} + c'_8 \frac{(s_{12}s_{13} + \dots)}{\Lambda^4} + \dots \quad (1.1)$$

where the c 's are dimensionless coefficients, and the ellipses stand for symmetric permutations. Because of momentum conservation, the term with c_6 actually vanishes, and we can trade the last term for the term with c_8 . Thus we see that there is one operator at dimension-8, and no operator at dimension-6. Indeed, at dimension-6, $(\partial\phi)^2\phi^2$ can be eliminated by a field redefinition. At dimension-8, the only independent operator is $(\partial\phi)^4$.

As a check of our results, we used the Mathematica notebook of [4] to derive the EFT Lagrangian for the scalar plus gluon case, as well as for the massless-vector plus gluon case. Our counting of operators indeed reproduces the results of [4].

We stress that we do not introduce any new tools, but rather make use of well-known on-shell methods (for reviews of the subject, see e.g. [11, 15–17]). Gauge symmetry is an output, rather than an input, in the on-shell approach. This is evident in the counting of independent parameters in our examples, which matches the number of independent gauge-invariant operators. The amplitudes “know about” gauge invariance to all orders by virtue of the aforementioned principles: Lorentz invariance, unitarity and Bose statistics.

This paper is organized as follows. In section 2 we calculate the hgg , $hggg$ and $hhgg$ amplitudes, and discuss the correspondence with the EFT operators. In section 3 we calculate the $Z'ggg$ amplitudes, starting from a massive Z' , and then taking the high energy limit to obtain the massless case. The massive-vector amplitudes split into different

massless- Z' helicity amplitudes plus scalar amplitudes. We discuss the correspondence with EFT operators, and the number of independent operators, in both the massive and massless case. Appendix A summarizes the essentials of the spinor formalism we use, for both massless and massive particles. Some details of the high-energy limit appear in appendix B.

2 Scalar plus gluon amplitudes

Here we consider amplitudes with a single spin-0, gauge singlet, h , and two or three gluons. We neglect quarks throughout this discussion. Tree-level amplitudes with a single Higgs and any number of gluons were derived in [9, 10], assuming the SM dimension-5 top-loop operator

$$\frac{1}{\Lambda} h G^{\mu\nu} G_{\mu\nu}. \tag{2.1}$$

Some of our analysis reproduces these known results. Our aim however, is to generalize these results beyond the operator eq. (2.1), to any possible higher-dimension operator, suppressed by the appropriate power of a single scale Λ . The contribution of dimension-7 operators was inferred from Lorentz symmetry considerations in [18, 19].

2.1 The scalar plus two gluon amplitude $\mathcal{M}(h; gg)$

We start with the single scalar, 2-gluon amplitude, $\mathcal{M}(h; g^{a, h_1}(p_1) g^{b, h_2}(p_2))$. The most general ansatz for this amplitude is,

$$\mathcal{M}(h; g^{a, h_1}(p_1) g^{b, h_2}(p_2)) = \delta^{ab} [12]^n f_{-\ell}(s_{12}; \Lambda), \tag{2.2}$$

where δ^{ab} is a color factor, h_1, h_2 are the gluon helicities, n is an integer, $f_{-\ell}$ is an analytic function of mass dimension $-\ell$, and $s_{12} = (p_1 + p_2)^2 = m^2$. Since h is a scalar, the only little group weights are carried by the gluon spinor products. We then have,

$$n = 2h_1 = 2h_2, \tag{2.3}$$

which immediately sets

$$\mathcal{M}(h; g^+ g^-) = 0. \tag{2.4}$$

The only relevant amplitude to consider is then $\mathcal{M}(h; ++)$ (with $\mathcal{M}(h; --)$ determined by a parity transformation). Then $n = 2$, and since the amplitude has mass dimension 1, $\ell = 1$ and

$$\mathcal{M}(h; g^{a+}(p_1) g^{b+}(p_2)) = \delta^{ab} [12]^2 f_{-1}(m^2, \Lambda^2) = \delta^{ab} \frac{1}{\Lambda} [12]^2 \tilde{f}\left(\frac{m^2}{\Lambda^2}\right) \tag{2.5}$$

where \tilde{f} is dimensionless. Note that eq. (2.3), combined with the mass dimension of the amplitude, gives a selection rule relating the sum of the gluon helicities to the dimension of the coupling which generates the amplitude (see also [14]). Specifically, here

$$|h_1 + h_2| = l + 1, \tag{2.6}$$

with $l = 1$.

At tree-level, the function \tilde{f} can be written as a power series in m^2 . No negative power of m^2 can appear, since the amplitude must vanish for $m \rightarrow 0$. The amplitude is therefore given by,

$$\mathcal{M}\left(h; g^{a+}(p_1)g^{b+}(p_2)\right) = \delta^{ab} \frac{[12]^2}{\Lambda} \sum_{n=0}^{\infty} c_n \left(\frac{m^2}{\Lambda^2}\right)^n \equiv \delta^{ab} \frac{c_5^{hgg}}{\Lambda} [12]^2, \quad (2.7)$$

where we rescaled the infinite series into the coefficient c_5^{hgg} . This is indeed the most general three-point amplitude for one massive scalar and two massless vectors [20, 21].

We can now make contact with the EFT calculation. The lowest order operators mediating scalar decay to two spin-1 particles are dimension-5. In a CP-conserving theory, there is only a single such operator, namely eq. (2.1), in accord with the single real coefficient c_5^{hgg} at this order. Operators of higher dimension which contribute to the amplitude still contain two powers of the field-strength G , but an even power of derivatives. Since we consider a purely gluonic theory with no quarks, the EOM is $D^\mu G_{\mu\nu} = 0$. Using this and integration by parts, there is only a single independent operator at each order in Λ , with the derivatives acting on h and giving powers of m^2 . In this case, this series merely gives a rescaling of c_5^{hgg} .

In associating the amplitude eq. (2.7) with the operator eq. (2.1) we have assumed a scalar h and CP invariance. A pseudo-scalar would couple to the operator $G\tilde{G}$, with an identical result for the amplitude. In fact, a better way to organize the theory is by grouping the scalar and pseudo-scalar into a complex field ϕ , with the Lagrangian [10]

$$\phi G_{\text{SD}}^2 + \phi^\dagger G_{\text{ASD}}^2, \quad (2.8)$$

where the selfdual and anti-selfdual field strengths are defined as

$$G_{\text{SD}}^{\mu\nu} = \frac{1}{2}\left(G^{\mu\nu} + \tilde{G}^{\mu\nu}\right), \quad G_{\text{ASD}}^{\mu\nu} = \frac{1}{2}\left(G^{\mu\nu} - \tilde{G}^{\mu\nu}\right), \quad \tilde{G}^{\mu\nu} = \frac{i}{2}\epsilon^{\mu\nu\rho\sigma}G_{\rho\sigma}. \quad (2.9)$$

From the EFT point of view, the amplitude we calculated corresponds to the operator ϕG_{SD}^2 , since G_{SD} generates positive helicity gluons, while G_{ASD} generates negative helicity gluons [10, 22]. The amplitude mediated by $\phi^\dagger G_{\text{ASD}}^2$ can be obtained from this amplitude by reversing the gluon helicities, and switching angle and square brackets as explained in [10]. The scalar (pseudo scalar) amplitude is then obtained as the sum (difference) of the ϕ and ϕ^\dagger amplitudes. The ϕ and ϕ^\dagger 2-gluon decay amplitudes are identical, but, allowing for CP-violation, the coefficient c_5^{hgg} may be complex. In any case, the 2-gluon decay cannot distinguish between a scalar and a pseudo-scalar. This would require at least 4 independent momenta, namely a 4-gluon final state.

2.2 The scalar plus 3 gluon amplitudes $\mathcal{M}(h; ggg)$

The scalar plus three-gluon amplitude can be written in terms of the three helicity brackets and three Lorentz invariants,

$$\mathcal{M}\left(h; g^{a, h_1}(p_1)g^{b, h_2}(p_2)g^{c, h_3}(p_3)\right) = C^{abc} [12]^{n_{12}} [13]^{n_{13}} [23]^{n_{23}} f_{-\ell}(s_{12}, s_{23}, s_{13}; \Lambda) \quad (2.10)$$

where $-\ell$ denotes the mass dimension of the function $f_{-\ell}$, and the color factor C^{abc} is either f^{abc} or d^{abc} . Since the amplitude has mass dimension zero,

$$\ell = n_{12} + n_{13} + n_{23}. \tag{2.11}$$

Little group scaling determines the powers n_{ij} in terms of the gluon helicities,²

$$n_{12} + n_{13} = 2h_1, \quad n_{12} + n_{23} = 2h_2, \quad n_{13} + n_{23} = 2h_3. \tag{2.12}$$

so

$$n_{12} = \ell - 2h_3, \quad n_{13} = \ell - 2h_2, \quad n_{23} = \ell - 2h_1. \tag{2.13}$$

As before, eq. (2.13) relates the sum of helicities to the dimension of the coupling which generates the amplitude,

$$\ell = h_1 + h_2 + h_3, \tag{2.14}$$

so ℓ is odd, as in the 2-gluon case, and we immediately see that the amplitude must be generated by a higher dimension operator: the only invariants associated with bosons have mass-dimension 2, so at least one power of Λ is required.

At tree-level, since we consider only operators with a single h , the function $f_{-\ell}$ is simply a power series in the s_{ij} 's, and the only possible poles are single poles in the s_{ij} 's coming from gluon propagators. This part of the amplitude factorizes as the product of two 3-particle amplitudes, $\mathcal{M}(hgg)$ of eq. (2.7), and $\mathcal{M}(ggg)$ which we recall below. The all-plus amplitude is thus of the form,

$$\begin{aligned} \mathcal{M}\left(h; g^{a+}(p_1)g^{b+}(p_2)g^{c+}(p_3)\right) &= \frac{1}{\Lambda} [12][23][13] C^{abc} \times \\ &\times \left[\sum_{n,k,l=0}^{\infty} \frac{a_{n,k,l}}{\Lambda^{2(n+k+l+1)}} s_{12}^n s_{13}^k s_{23}^l + \text{factorizable} \right], \end{aligned} \tag{2.15}$$

subject to the constraint $s_{12} + s_{23} + s_{13} = m^2$. Here $a_{n,k,l}$ are dimensionless constants which, for $C^{abc} = f^{abc}$ (d^{abc}), are completely symmetric (antisymmetric) in the indices n, k, l .

Similarly, for $h_1 = h_2 = -h_3 = 1$, eq. (2.13) yields the solution

$$\begin{aligned} \mathcal{M}\left(h; g^{a+}(p_1)g^{b+}(p_2)g^{c-}(p_3)\right) &= \frac{[12]^3}{[13][23]} \frac{C^{abc}}{\Lambda} \times \\ &\times \left[\sum_{n,k,l=0}^{\infty} \frac{b_{n,k,l}}{\Lambda^{2(n+k+l)}} s_{12}^n s_{13}^k s_{23}^l + \text{factorizable} \right], \end{aligned} \tag{2.16}$$

where for $C^{abc} = f^{abc}$ we have $b_{n,k,l} = b_{n,l,k}$, while for $C^{abc} = d^{abc}$, $b_{n,k,l} = -b_{n,l,k}$.

²Choosing to work with angle brackets instead, with powers m_{12}, m_{13}, m_{23} would give $\ell = -h_1 - h_2 - h_3$ and $m_{12} = \ell - 2h_3$ etc.

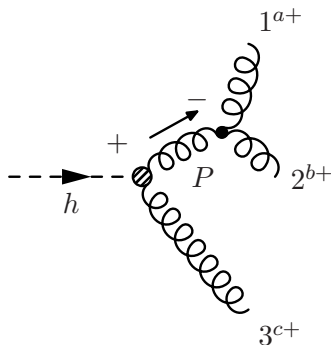


Figure 1. Factorization of the $+++$ amplitude on s_{12} . The direction of the arrow indicates the direction of momentum flow.

2.2.1 Three-gluon vertices

To calculate the factorizable parts of the Higgs plus 3-gluon amplitudes, we need three-gluon vertices. These can be obtained as three-gluon amplitudes with complex momenta, for which either $[ij]$ or $\langle ij \rangle$ vanish, such that $s_{ij} = 0$. Based on little group considerations and the mass dimension of the 3-point amplitude, the $++-$ and $+++$ tree-level amplitudes must be of the form (see e.g. [15])

$$\mathcal{M}_{3g}(1^{a+}2^{b+}3^{c-}) = f^{abc} g_s \frac{[12]^3}{[13][23]}, \tag{2.17a}$$

$$\mathcal{M}_{3g}(1^{a+}2^{b+}3^{c+}) = f^{abc} c_6^{ggg} \frac{[12][13][23]}{\Lambda^2}, \tag{2.17b}$$

where c_6^{ggg} is a dimensionless coefficient, and g_s is the strong coupling (up to a convention dependent numerical coefficient). The function $f_{-\ell}(s_{ij}) = 1$ in this case, since $s_{ij} = 0$. These vertices therefore receive no further contributions.

Again, we see that vertices of different net helicities arise from couplings of different dimensions. The vertex of eq. (2.17a) is the QCD vertex, while the vertex of eq. (2.17b), comes from the dimension-6 operator $\text{Tr}(G^3)$. As pointed out in [14], this explains why this operator does not affect dijet production at leading order [12, 23].³

Note that c_6^{ggg} is in principle complex, corresponding to the two operators $\text{Tr}(G^3)$ and $\text{Tr}(G^2\tilde{G})$.

2.2.2 The $h; +++$ amplitude

We begin by computing the factorizable part of the amplitude of eq. (2.15). Consider the s_{12} pole. Because we pulled out a factor of $[12]$ we must set $\langle 12 \rangle$ to zero. Only the $+++$

³At higher order, this is no longer the case. Thus for example the helicity structure of the tree-level 5-gluon amplitude, or one-loop 4-gluon amplitudes, generated by this operator is not orthogonal to QCD [12].

3-gluon amplitude can contribute in this case (see figure 1), and we get⁴

$$\begin{aligned}
 \mathcal{M}(h; g^{a+}(p_1)g^{b+}(p_2)g^{c+}(p_3)) &= \mathcal{M}_{3g}(1^{a+}2^{b+}P^-) \frac{-i}{s_{12}} \mathcal{M}_{hgg}(3^+(-P)^+) \\
 &= f^{abc} \tilde{g}_s \frac{[12]^3}{[1P][2P]} \frac{i}{s_{12}} \frac{c_5^{hgg}}{\Lambda} [P3]^2 \\
 &= f^{abc} \tilde{g}_s \frac{[12]^3}{[1P]\langle P3\rangle[2P]\langle P3\rangle} \frac{i}{s_{12}} \frac{c_5^{hgg}}{\Lambda} (s_{23} + s_{13})^2 \\
 &= -\frac{i c_5^{hgg} g_s m^4}{\Lambda} \frac{[12][13][23]}{s_{12}s_{13}s_{23}} f^{abc}, \tag{2.18}
 \end{aligned}$$

where we have used $\lim_{\langle 12 \rangle \rightarrow 0} (s_{23} + s_{13}) = m^2$ and $P = -p_1 - p_2$. Since the amplitude is completely symmetric under $i \leftrightarrow j$ we need not consider factorizations under s_{23}, s_{13} .

Substituting this in eq. (2.15) we then have for the + + + amplitude,

$$\begin{aligned}
 \mathcal{M}(h; g^{a+}(p_1)g^{b+}(p_2)g^{c+}(p_3)) &= \frac{[12][13][23]}{\Lambda} \left[-i f^{abc} g_s c_5^{hgg} \frac{m^4}{s_{12}s_{13}s_{23}} \right. \\
 &\quad \left. + \sum_{n,k,l=0}^{\infty} \frac{a_{n,k,l} f^{abc} + \alpha_{n,k,l} d^{abc}}{\Lambda^{2(n+k+l+1)}} s_{12}^n s_{13}^k s_{23}^l \right]. \tag{2.19}
 \end{aligned}$$

Expanding the series eq. (2.19) up to $n + k + l \leq 4$, i.e., dimension 13, we get

$$\begin{aligned}
 \mathcal{M}(h; g^{a+}(p_1)g^{b+}(p_2)g^{c+}(p_3)) &= \frac{[12][13][23]}{\Lambda} \\
 &\times \left[f^{abc} \left(-i \frac{m^4 g_s c_5^{hgg}}{s_{12}s_{13}s_{23}} + \frac{a_{0,0,0}}{\Lambda^2} + \frac{a_{1,0,0}(s_{12} + s_{13} + s_{23})}{\Lambda^4} \right. \right. \\
 &\quad \left. \left. + \frac{1}{\Lambda^6} (a_{2,0,0}(s_{12}^2 + s_{13}^2 + s_{23}^2) + a_{1,1,0}(s_{12}s_{13} + s_{12}s_{23} + s_{13}s_{23})) + \frac{1}{\Lambda^8} (a_{1,1,1}s_{12}s_{13}s_{23} \right. \right. \\
 &\quad \left. \left. + a_{0,0,3}(s_{12}^3 + s_{13}^3 + s_{23}^3) + a_{0,1,2}(s_{13}s_{12}^2 + s_{23}s_{12}^2 + s_{13}^2s_{12} + s_{23}^2s_{12} + s_{13}s_{23}^2 + s_{13}^2s_{23}) \right) \right) \\
 &\quad \left. + \frac{d^{abc}}{\Lambda^8} (s_{12} - s_{13})(s_{12} - s_{23})(s_{13} - s_{23}) \alpha_{0,1,2} \right]. \tag{2.20}
 \end{aligned}$$

This result may be simplified by using momentum conservation, which implies $s_{12} + s_{23} + s_{23} = m^2$. We may also trade $s_{12}^2 + s_{13}^2 + s_{23}^2$ for $(s_{12} + s_{23} + s_{13})^2 - 2s_{13}s_{12} \dots$, and similarly for the cubic polynomial. The final result for the EFT amplitude up to dimension 13 is

$$\begin{aligned}
 \mathcal{M}(h; g^{a+}(p_1)g^{b+}(p_2)g^{c+}(p_3)) &= \frac{[12][13][23]}{\Lambda} \left[f^{abc} \left(-i \frac{m^4 g_s c_5^{hgg}}{s_{12}s_{13}s_{23}} + \frac{a_7}{\Lambda^2} \right. \right. \\
 &\quad \left. \left. + \frac{a_{11}}{\Lambda^6} (s_{12}s_{23} + s_{13}s_{23} + s_{12}s_{13}) + \frac{a_{13}}{\Lambda^8} s_{12}s_{13}s_{23} \right) \right. \\
 &\quad \left. + d^{abc} \frac{a'_{13}}{\Lambda^8} (s_{12} - s_{13})(s_{12} - s_{23})(s_{13} - s_{23}) \right], \tag{2.21}
 \end{aligned}$$

⁴Note that the momentum in the $h \rightarrow 2g$ vertex is $-P$, because we take all the momenta to be incoming. In the notation of [17], spinors with $-P$ are related to spinors with P by a factor of i , e.g. $|-P\rangle = i|P\rangle$ etc.

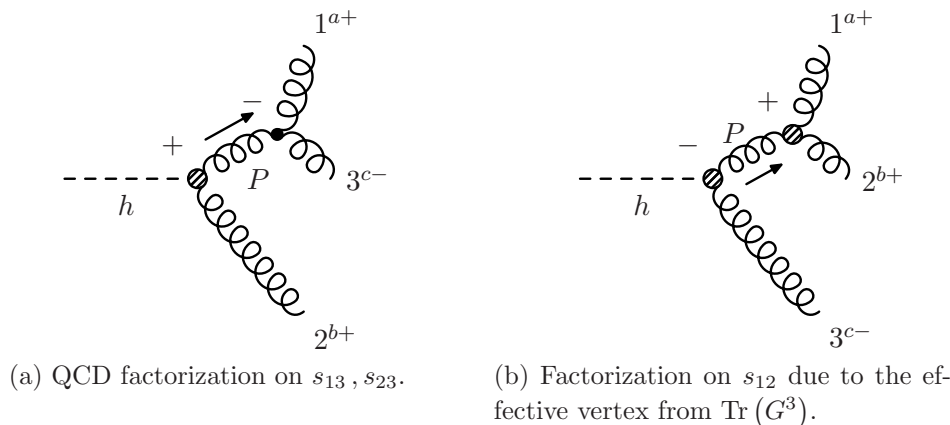


Figure 2. Possible factorizations of the $++-$ amplitude.

where we defined

$$a_7 \equiv a_{0,0,0} + a_{1,0,0} \frac{m^2}{\Lambda^2} + a_{2,0,0} \frac{m^4}{\Lambda^4} + a_{0,0,3} \frac{m^6}{\Lambda^6}, \quad (2.22a)$$

$$a_{11} \equiv a_{1,1,0} - 2a_{2,0,0} + (a_{0,1,2} - 3a_{0,0,3}) \frac{m^2}{\Lambda^2}, \quad (2.22b)$$

$$a_{13} \equiv a_{1,1,1} - 3a_{0,1,2} + 3a_{0,0,3}, \quad (2.22c)$$

and $a'_{13} \equiv \alpha_{0,1,2}$. The amplitude for a massless h is identical. We simply set $m^2 = 0$ in intermediate stages above, with the end result unchanged.

2.2.3 The $h; ++-$ amplitude

Again, we begin by considering the factorizable part. In this case, both the $+++$ and $+- -$ 3-gluon amplitudes can contribute. The $++-$ contribution from the s_{13} pole (see figure 2a) is,

$$\begin{aligned} \mathcal{M}\left(h; g^{a+}(p_1)g^{b+}(p_2)g^{c-}(p_3)\right) &= \mathcal{M}_{3g}(1^{a+}3^{c-}P^-) \frac{-i}{s_{13}} \mathcal{M}_{hgg}(2^{b+}(-P)^+) \\ &= \frac{ig_s c_5^{hgg}}{\Lambda} \frac{[12]^3}{[13][23]} f^{abc}. \end{aligned} \quad (2.23)$$

The s_{12} pole is shown in figure 2b and gives,

$$\begin{aligned} \mathcal{M}\left(h; g^{a+}(p_1)g^{b+}(p_2)g^{c-}(p_3)\right) &= \mathcal{M}_{3g}(1^{a+}2^{b+}P^+) \frac{-i}{s_{12}} \mathcal{M}_{hgg}(3^{c-}(-P)^-) \\ &= \frac{ic_5^{hgg} c_6^{ggg}}{\Lambda^3} \frac{[12]^3}{[13][23]} \frac{s_{23}s_{13}}{s_{12}} f^{abc}. \end{aligned} \quad (2.24)$$

The full EFT amplitude is then given by

$$\begin{aligned} \mathcal{M}\left(h; g^{a+}(p_1)g^{b+}(p_2)g^{c-}(p_3)\right) &= \frac{[12]^3}{[13][23]} \frac{1}{\Lambda} \left[f^{abc} \left(ig_s c_5^{hgg} - \frac{ic_5^{hgg} c_6^{ggg}}{\Lambda^2} \frac{s_{23}s_{13}}{s_{12}} \right) \right. \\ &\quad \left. + \sum_{n,k,l=0}^{\infty} \frac{b_{n,k,l} f^{abc} + \beta_{n,k,l} d^{abc}}{\Lambda^{2(n+k+l)}} s_{12}^n s_{13}^k s_{23}^l \right], \end{aligned} \quad (2.25)$$

Mass dimension	Operators	
	$\mathcal{M}(+++)$	$\mathcal{M}(++-)$
5	—	—
7	$h G_{\text{SD}}^3 [1, f^{abc}]$	—
9	—	$\mathcal{D}^2 G_{\text{SD}}^2 G_{\text{ASD}} h [1, f^{abc}]$
11	$\mathcal{D}^4 G_{\text{SD}}^3 h [1, f^{abc}]$	$\mathcal{D}^4 G_{\text{SD}}^2 G_{\text{ASD}} h [1, f^{abc}; 1, d^{abc}]$
13	$\mathcal{D}^6 G_{\text{SD}}^3 h [1, f^{abc}; 1, d^{abc}]$	$\mathcal{D}^6 G_{\text{SD}}^2 G_{\text{ASD}} h [2, f^{abc}; 1, d^{abc}]$

Table 1. Operators contributing to the $h \rightarrow 3g$ amplitude. The number of independent operators of each type and color structure appears in brackets.

where $b_{n,k,l} = b_{n,l,k}$ and $\beta_{n,k,l} = -\beta_{n,l,k}$. Computing the series in eq. (2.25) up to dimension 13, and discarding redundant terms which are related by powers of m^2/Λ^2 as before, we get

$$\begin{aligned} \mathcal{M}(h; g^{a+}(p_1)g^{b+}(p_2)g^{c-}(p_3)) &= \frac{[12]^3}{[13][23]} \frac{1}{\Lambda} \left[f^{abc} \left(i g_s c_5^{hgg} - \frac{i c_5^{hgg} c_6^{ggg}}{\Lambda^2} \frac{s_{23} s_{13}}{s_{12}} + \frac{b_9}{\Lambda^4} s_{13} s_{23} \right. \right. \\ &+ \left. \frac{b_{11}}{\Lambda^6} s_{12} s_{13} s_{23} + \frac{b_{13}}{\Lambda^8} s_{13}^2 s_{23}^2 + \frac{b'_{13}}{\Lambda^8} s_{13} s_{23} s_{12}^2 \right) + d^{abc} s_{13} s_{23} (s_{13} - s_{23}) \left(\frac{b'_{11}}{\Lambda^6} + \frac{b''_{13}}{\Lambda^8} s_{12} \right) \right], \end{aligned} \quad (2.26)$$

with an identical result for a massless h .

Finally, note that the scalar plus photon amplitudes, $h\gamma\gamma$ and $h\gamma\gamma\gamma$, can be obtained from our results above by setting $f^{abc} = 0$ and omitting δ^{ab} and d^{abc} .

2.2.4 Inferring the EFT Lagrangian

Eqs. (2.21) and (2.26) represent the EFT contribution to the $h; +++$ and $h; ++-$ amplitudes respectively, up to dimension 13. Apart from the couplings g_s , c_6^{ggg} , c_5^{hgg} , associated with the three relevant three-particle amplitudes, the $h; +++$ amplitude depends on four distinct kinematical structures, with four independent coefficients: a_7 , a_{11} , a_{13} and a'_{13} . The $h; ++-$ amplitude has six distinct kinematical structures, with six independent coefficients: b_9 , b_{11} , b'_{11} , b_{13} , b'_{13} and b''_{13} . From the EFT Lagrangian point of view, these are associated with the coefficients of operators with a single h , three powers of the field strength, and some number of covariant derivatives. Recalling that positive-helicity (negative-helicity) gluons correspond to $G_{\text{SD}}^{\mu\nu}$ ($G_{\text{ASD}}^{\mu\nu}$), we can infer the schematic form of the operators, and the number of independent operators at each dimension. We display these in table 1, where we divided the operators according to whether they contribute to the $+++$ or $++-$ amplitudes. The number of independent operators of each type, with color indices contracted with f^{abc} or d^{abc} , is indicated in parenthesis. As a check of our results, we used the Mathematica notebook of [4] to derive the scalar plus 3 gluon operators, and verified that the results agree.

2.3 The two scalar, two gluon amplitudes $\mathcal{M}(hh; gg)$

To calculate the two- h , two-gluon amplitude, it is convenient to keep the symmetry under both h exchange and gluon exchange manifest. Therefore, we will not use momentum

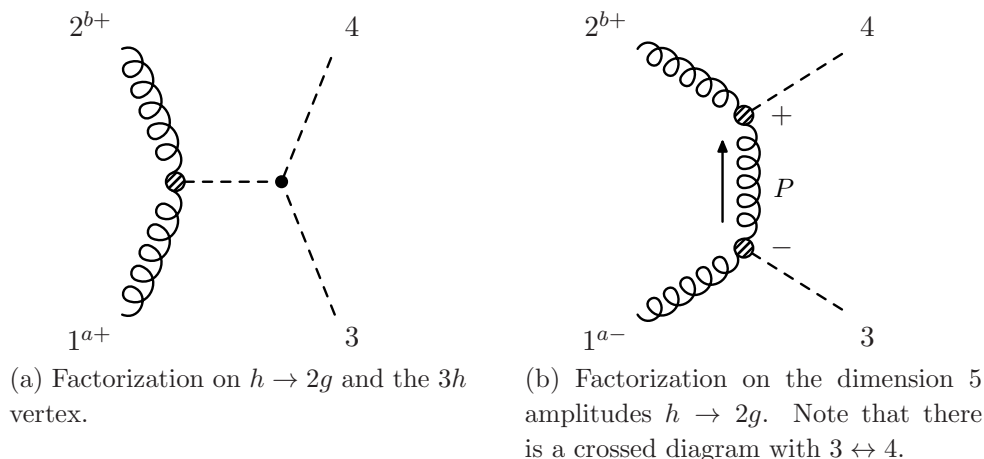


Figure 3. Possible factorizations of the $2h \rightarrow 2g$ amplitude.

conservation to eliminate any of the external momenta. Let us label the massless momenta by p_1, p_2 , and the massive momenta by p_3 and p_4 . There are two independent structures which carry little group weights in this case, namely,

$$[12] \quad \text{and} \quad \langle 1|p_3|2 \rangle. \quad (2.27)$$

Thus the $2h; 2g$ amplitude is of the form,

$$\mathcal{M}(2h; g^{a, h_1}(p_1)g^{b, h_2}(p_2)) = \delta^{ab} [12]^{n_{12}} \langle 1|p_3|2 \rangle^{k_{12}} f_{-\ell}, \quad (2.28)$$

where n_{12}, k_{12} are integers and $f_{-\ell}$ is an analytic function of mass dimension $-\ell$. Requiring the correct helicity weights and mass dimension yields the equations,

$$-2h_1 = k_{12} - n_{12}, \quad -2h_2 = -k_{12} - n_{12}, \quad \ell = n_{12} + 2k_{12}, \quad (2.29)$$

so

$$n_{12} = h_1 + h_2, \quad k_{12} = h_2 - h_1, \quad \ell = 3h_2 - h_1. \quad (2.30)$$

Plugging these into eq. (2.30) we get the amplitudes

$$\mathcal{M}(2h; g^{a+}(p_1)g^{b+}(p_2)) = \delta^{ab} [12]^2 f_{-2}, \quad (2.31a)$$

$$\mathcal{M}(2h; g^{a-}(p_1)g^{b+}(p_2)) = \delta^{ab} \langle 1|p_3|2 \rangle^2 \tilde{f}_{-4} = \delta^{ab} \frac{1}{4} \langle 1|p_3 - p_4|2 \rangle^2 \tilde{f}_{-4}, \quad (2.31b)$$

where in the last line we used momentum conservation to get a manifestly symmetric expression in $3 \leftrightarrow 4$. It will be convenient to define the variables

$$\tilde{s}_{ij} \equiv 2p_i \cdot p_j \quad \text{for } i \neq j. \quad (2.32)$$

These satisfy,

$$\tilde{s}_{12} = 2m^2 + \tilde{s}_{34}, \quad \tilde{s}_{13} = \tilde{s}_{24}, \quad \tilde{s}_{23} = \tilde{s}_{14}, \quad \tilde{s}_{12} + \tilde{s}_{13} + \tilde{s}_{23} = 0. \quad (2.33)$$

The functions f_{-2}, \tilde{f}_{-4} can then be written as power series of the form,

$$a_{n,k,l} \tilde{s}_{12}^n \tilde{s}_{13}^k \tilde{s}_{23}^l = a_{n,k,l} \tilde{s}_{12}^n \left(\frac{\tilde{s}_{13} + \tilde{s}_{24}}{2} \right)^k \left(\frac{\tilde{s}_{23} + \tilde{s}_{14}}{2} \right)^l, \quad (2.34)$$

where the coefficients $a_{n,k,l}$ satisfy, $a_{n,k,l} = a_{n,l,k}$.

2.3.1 The $3h$ vertex

In order to obtain the factorizable parts of the $2h + 2g$ amplitudes we will need the three-point vertex for three massive scalars. It is easy to show that this is a constant. Let us label the three massive momenta by p_1, p_2 and p_3 , where $p_i = m_i^2$ for $i = 1, 2, 3$. For simplicity we take all three masses to be identical, $m_i \equiv m$. The amplitude does not carry any little group weights or indices and has mass dimension one. It is therefore a function of \tilde{s}_{ij} , with $i, j = 1, 2, 3$. Since $\tilde{s}_{ij} = m^2$ the amplitude is a constant, which we label c_{3h} .

2.3.2 The $hh; ++$ amplitude

Let us first consider the factorizable part (see figure 3a). Gluing the scalar three-point vertex c_{3h} and the $h \rightarrow 2g$ amplitude from eq. (2.7) we get

$$\mathcal{M}\left(2h; g^{a+}(p_1)g^{b+}(p_2)\right) = \delta^{ab} \frac{ic_{3h} c_5^{hgg}}{\Lambda} \frac{[12]^2}{\tilde{s}_{12} - m^2}. \quad (2.35)$$

We can now turn to the non-factorizable parts. Expanding f_{-2} in terms of $\{\tilde{s}_{12}, \tilde{s}_{13}, \tilde{s}_{23}\}$ up to dimension 10, and maintaining symmetry under $1 \leftrightarrow 2$ and $3 \leftrightarrow 4$, we get,

$$\begin{aligned} \mathcal{M}\left(2h; g^{a+}(p_1)g^{b+}(p_2)\right) = & \delta^{ab} \frac{[12]^2}{\Lambda^2} \left[a_{0,0,0}^{hh} + \frac{(\tilde{s}_{13} + \tilde{s}_{23})a_{0,0,1}^{hh}}{\Lambda^2} + \frac{\tilde{s}_{12}a_{1,0,0}^{hh}}{\Lambda^2} \right. \\ & \left. + \frac{\tilde{s}_{12}^2 a_{2,0,0}^{hh}}{\Lambda^4} + \frac{(\tilde{s}_{13} + \tilde{s}_{23})\tilde{s}_{12}a_{1,0,1}^{hh}}{\Lambda^4} + \frac{(\tilde{s}_{13}^2 + \tilde{s}_{23}^2)a_{0,0,2}^{hh}}{\Lambda^4} + \frac{\tilde{s}_{13}\tilde{s}_{23}a_{0,1,1}^{hh}}{\Lambda^4} \right]. \end{aligned} \quad (2.36)$$

Using eq. (2.33) and adding the factorizable part from eq. (2.35) we finally have,

$$\mathcal{M}\left(2h; g^{a+}(p_1)g^{b+}(p_2)\right) = \delta^{ab} [12]^2 \left[\frac{c_{3h}c_5^{hgg}}{\Lambda} \frac{i}{\tilde{s}_{12} - m^2} + \frac{a_6^{hh}}{\Lambda^2} + \frac{a_8^{hh}}{\Lambda^4} \tilde{s}_{12} + \frac{a_8^{hh}}{\Lambda^6} \tilde{s}_{12}^2 + \frac{a_8^{hh}}{\Lambda^6} \tilde{s}_{13}\tilde{s}_{14} \right]. \quad (2.37)$$

2.3.3 The $hh; +-$ amplitude

The factorizable part of the $hh; g^+g^-$ amplitude (see figure 3b) is,

$$\begin{aligned} \mathcal{M}_{hgg}\left(2^{b+}P^{c+}\right) \frac{-i\delta^{cd}}{P^2} \mathcal{M}_{hgg}\left(1^{a-}(-P)^{d-}\right) &= \mathcal{M}_{hgg}\left(2^{b+}P^{c+}\right) \frac{-i\delta^{cd}}{\tilde{s}_{13} + m^2} \mathcal{M}_{hgg}\left(1^{a-}(-P)^{d-}\right) \\ &= i \left(\frac{c_5^{hgg}}{2\Lambda} \right)^2 \langle 1|p_3 - p_4|2 \rangle^2 \frac{\delta^{ab}}{\tilde{s}_{13} + m^2}, \end{aligned} \quad (2.38)$$

where $P = p_1 + p_3$ and we have symmetrized the helicity part. Adding the crossed channel with $3 \rightarrow 4$ we get,

$$\begin{aligned} \mathcal{M}\left(2h; g^{a-}(p_1)g^{b+}(p_2)\right) &= i\delta^{ab} \langle 1|p_3 - p_4|2 \rangle^2 \left(\frac{c_5^{hgg}}{2\Lambda} \right)^2 \left[\frac{1}{\tilde{s}_{13} + m^2} + \frac{1}{\tilde{s}_{14} + m^2} \right] \\ &= i \left(\frac{c_5^{hgg}}{2\Lambda} \right)^2 \langle 1|p_3 - p_4|2 \rangle^2 \delta^{ab} \left[\frac{2m^2 - \tilde{s}_{12}}{(\tilde{s}_{13} + m^2)(\tilde{s}_{23} + m^2)} \right]. \end{aligned} \quad (2.39)$$

Mass dimension	Operators	
	$\mathcal{M}(++)$	$\mathcal{M}(+-)$
6	$G_{\text{SD}}^2 h^2$ [1]	—
8	$\mathcal{D}^2 G_{\text{SD}}^2 h^2$ [1]	$\mathcal{D}^2 G_{\text{SD}} G_{\text{ASD}} h^2$ [1]
10	$\mathcal{D}^4 G_{\text{SD}}^2 h^2$ [2]	$\mathcal{D}^4 G_{\text{SD}} G_{\text{ASD}} h^2$ [1]

Table 2. Operators contributing to the $hhgg$ amplitudes. The number of independent operators is shown in brackets.

Turning to the non-factorizable part, we expand \tilde{f}_{-4} of eq. (2.31b) as

$$\mathcal{M}\left(2h; g^{a-}(p_1)g^{b+}(p_2)\right) = \delta^{ab} \frac{\langle 1|p_3 - p_4|2\rangle^2}{\Lambda^4} \sum_{\substack{n,k,l=0; \\ 0 \leq n+k+l}}^{\infty} \frac{\tilde{s}_{12}^n \tilde{s}_{13}^k \tilde{s}_{23}^l}{\Lambda^{2(n+k+l)}} b_{n,k,l}^{hh}, \quad (2.40)$$

where $b_{n,k,l}^{hh} = b_{n,l,k}^{hh}$. Computing the series in eq. (2.40) up to dimension 10 and adding the factorizable part from eq. (2.39) we get

$$\begin{aligned} \mathcal{M}\left(2h; g^{a-}(p_1)g^{b+}(p_2)\right) &= \delta^{ab} \frac{\langle 1|p_3 - p_4|2\rangle^2}{\Lambda^4} \\ &\times \left[b_8^{hh} + \frac{b_{10}^{hh}}{\Lambda^2} \tilde{s}_{12} - \left(\frac{c_5^{hgg} \Lambda}{2} \right)^2 \left[\frac{2m^2 - \tilde{s}_{12}}{(\tilde{s}_{13} + m^2)(\tilde{s}_{23} + m^2)} \right] \right]. \end{aligned} \quad (2.41)$$

2.3.4 Inferring the EFT

The EFT contributions to the $hh; ++$ and $hh; --$ amplitudes are given in eqs. (2.37) and (2.41). Aside from the constants c_5^{hgg} , which controls the $h \rightarrow 2g$ amplitudes, and c_{3h} , which controls the $3h$ vertex, the $hh; ++$ amplitude depends on four dimensionless constants, while the $hh; +-$ amplitude depends on two dimensionless constants. Therefore the $hh; ++$ amplitude gets contributions from one operator at dimension 6, one operator at dimension 8, and two operators at dimension 10. The $hh; +-$ amplitude gets contributions from one operator at dimension 8 and one at dimension 10. This agrees with the counting obtained by using the Mathematica notebook of [4]. The results are summarized in table 2.

3 The vector plus three gluon amplitudes $\mathcal{M}(Z'; ggg)$

In this section we consider amplitudes with a single massive spin-1 particle, which we denote by Z' , and three gluons. We will then use these to obtain the massless vector amplitudes. Yang's theorem forbids the massive vector decay to two gluons. For completeness, we review the derivation of Yang's theorem via on-shell methods following [21]. This will also serve as a simple illustration of the spinor helicity formalism for massive particles of [21].

An amplitude with an external massive spin-1 particle can be decomposed as [21]

$$\mathcal{M}^{I_1 I_2} = \lambda_{\alpha_1}^{I_1} \lambda_{\alpha_2}^{I_2} M^{\{\alpha_1, \alpha_2\}} = \tilde{\lambda}_{\dot{\alpha}_1}^{I_1} \tilde{\lambda}_{\dot{\alpha}_2}^{I_2} \tilde{M}^{\{\dot{\alpha}_1, \dot{\alpha}_2\}}, \quad (3.1)$$

where the boldface spinors $\boldsymbol{\lambda}$ are spinor helicity variables for the massive momentum, (see appendix A), and $I_1, I_2 = 1, 2$ are SU(2) indices of the little group of the massive particle. The reduced amplitudes, M and \tilde{M} , are symmetric in the SL(2, C) indices α and $\dot{\alpha}$ respectively. The dotted and undotted representations of the amplitude are equivalent; we may use the massive momentum to switch between the dotted and undotted spinors (see eq. (A.17)).

The Z' plus two gluon reduced amplitude can then be written as,

$$\tilde{M}^{\dot{\alpha}_1 \dot{\alpha}_2} \left(Z'(\boldsymbol{p}); g(p_1)g(p_2) \right) = [12]^{n_{12}} \left(\tilde{\lambda}_1^{n_1} \tilde{\lambda}_2^{n_2} \right)^{\dot{\alpha}_1 \dot{\alpha}_2} f_{-\ell}(s_{12}, \Lambda), \quad (3.2)$$

where $\tilde{\lambda}_{i=1,2}$ is the spinor associated with the gluon momentum p_i , and $n_i = 0, 1, 2$ such that $n_1 + n_2 = 2$. Requiring the correct little group weights and dimensionality gives the relations

$$n_1 + n_{12} = 2h_1, \quad n_2 + n_{12} = 2h_2, \quad n_{12} - \ell + 2 = 1, \quad (3.3)$$

so that the full amplitude is given by

$$\mathcal{M} \left(Z'(\boldsymbol{p}); g^{a,h_1}(p_1)g^{b,h_2}(p_2) \right) = \delta^{ab} [12]^{h-1} [1\boldsymbol{p}]^{2h_1+1-h} [2\boldsymbol{p}]^{2h_2+1-h} f_{-h}(m^2, \Lambda), \quad (3.4)$$

where $h = h_1 + h_2$, and a, b are color indices. We have also employed the “**bold**” notation of [21], where the SU(2) index of the \boldsymbol{p} -spinor is suppressed, with the understanding that the amplitude is symmetric in these indices. We see that the amplitude eq. (3.4) is anti-symmetric under $1 \leftrightarrow 2$ exchange. We conclude that it must vanish, in accord with the spin-statistics theorem.

The amplitude $Z'_\mu \rightarrow 3g$ is therefore the first non-zero amplitude, and has no factorizable part. We choose the following ansatz for the reduced amplitude,

$$\begin{aligned} \tilde{M}^{\dot{\alpha}_1 \dot{\alpha}_2} \left(Z'(\boldsymbol{p}_4); g(p_1)^{h_1} g(p_2)^{h_2} g(p_2)^{h_3} \right) &= [12]^{n_{12}} [13]^{n_{13}} [23]^{n_{23}} \left(\tilde{\lambda}_1^{n_1} \tilde{\lambda}_2^{n_2} \tilde{\lambda}_3^{n_3} \right)^{\dot{\alpha}_1 \dot{\alpha}_2} \\ &\times f_{-\ell}(s_{12}, s_{13}, s_{23}), \end{aligned} \quad (3.5)$$

where $n_i = 0, 1, 2$ with $\sum_{i=1}^3 n_i = 2$ and for now we suppressed the color indices. Requiring the correct helicity weights and mass dimension in eq. (3.5) gives,

$$\sum_{1=i<j}^3 n_{ij} = \ell - 2, \quad (3.6)$$

and

$$n_1 + n_{12} + n_{13} = 2h_1, \quad n_2 + n_{12} + n_{23} = 2h_2, \quad n_3 + n_{13} + n_{23} = 2h_3. \quad (3.7)$$

Eqs. (3.6) and (3.7) give the selection rule,

$$\ell = 1 + h_1 + h_2 + h_3, \quad (3.8)$$

with

$$\begin{aligned} n_{12} &= n_3 + h_1 + h_2 - h_3 - 1, & n_{23} &= -n_2 - n_3 - h_1 + h_2 + h_3 + 1, \\ n_{13} &= n_2 + h_1 - h_2 + h_3 - 1, & n_1 &= -n_2 - n_3 + 2. \end{aligned} \quad (3.9)$$

3.1 The Z' ; + + + amplitude

Substituting $h_1 = h_2 = h_3 = +1$ in eqs. (3.8) and (3.9) we obtain

$$\begin{aligned} \mathcal{M}\left(Z'(\mathbf{p}_4); g^{a+}(p_1); g^{b+}(p_2); g^{c+}(p_3)\right) &= C^{abc} \left[[23]^2 [14]^2 f'_{-4}{}^{\pm}(2; 3) + [12]^2 [34]^2 f'_{-4}{}^{\pm}(1; 2) \right. \\ &\quad + [13]^2 [24]^2 f'_{-4}{}^{\pm}(1; 3) + [12] [13] [24] [34] f'_{-4}{}^{\pm}(2; 3) + [13] [23] [14] [24] f'_{-4}{}^{\pm}(1; 2) \\ &\quad \left. + [12] [23] [14] [34] f'_{-4}{}^{\pm}(1; 3) \right] \end{aligned} \quad (3.10)$$

where $C^{abc} = f^{abc}$ or d^{abc} and $f_{-\ell}(i; j)$, $f'_{-\ell}(i; j)$ are analytic functions of the s_{ij} 's of mass dimension $-\ell$. For $C^{abc} = d^{abc}$ ($C^{abc} = f^{abc}$) these functions are symmetric (antisymmetric) under $i \leftrightarrow j$, and we use the superscript \pm to denote the symmetric and antisymmetric versions respectively. Using Schouten identities we can eliminate the first three terms to obtain,⁵

$$\begin{aligned} \mathcal{M}\left(Z'(\mathbf{p}_4); g^{a+}(p_1); g^{b+}(p_2); g^{c+}(p_3)\right) &= \quad (3.11) \\ &= d^{abc} \left[[12] [23] [14] [34] f_{-4}^+(1; 3) - [13] [23] [14] [24] f_{-4}^+(1; 2) - [12] [13] [24] [34] f_{-4}^+(2; 3) \right], \\ &\quad \times f^{abc} \left[[12] [23] [14] [34] f_{-4}^-(1; 3) + [13] [23] [14] [24] f_{-4}^-(1; 2) + [12] [13] [24] [34] f_{-4}^-(2; 3) \right], \end{aligned}$$

with

$$f_{-4}^+(1; 2) = \frac{1}{\Lambda^4} \left(c_8^{(1)} + \frac{s_{12}}{\Lambda^2} c_{10}^{(1)} + \frac{1}{\Lambda^4} \left(s_{12}^2 c_{12}^{(1)} + s_{13} s_{23} c_{12}^{(2)} \right) \right) + \mathcal{O}(\Lambda^{-10}), \quad (3.12)$$

$$f_{-4}^-(1; 2) = \frac{s_{13} - s_{23}}{\Lambda^6} \left(c_{10}^{(2)} + \frac{c_{12}^{(3)}}{\Lambda^2} s_{12} \right) + \mathcal{O}(\Lambda^{-10}), \quad (3.13)$$

with the remaining functions obtained by permutations of $\{1, 2, 3\}$. Thus the amplitude involves six independent coefficients. One coefficient with d^{abc} at dimension 8, two coefficients at dimension 10 — one for each color structure, and three coefficients at dimension 12 — two with d^{abc} and one with f^{abc} .

We can now infer the structure and number of the EFT operators which contribute to this amplitude. Using the EOM for Z' , we can write these operators in terms of field strengths only. The different operators then contain three powers of $G_{\mu\nu}$ and a single power of $Z'_{\mu\nu}$, with some number of derivatives. There is one operator at dimension 8, which is schematically $Z' G_{\text{SD}}^3$, with Z' denoting the Z' field strength, and with color indices contracted with d^{abc} , two operators at dimension 10, namely $D^2 Z' G_{\text{SD}}^3$, one with f^{abc} and one with d^{abc} , and three operators of the form $D^4 Z' G_{\text{SD}}^3$ at dimension 12 — two with d^{abc} and one with f^{abc} . The effects of the lowest-order operators were considered in [24–26].

Eq. (3.11) describes the three Z' polarizations. The positive polarization is obtained by taking $[4^{I=1}] [4^{J=1}]$, the negative polarization is obtained by taking $I = J = 2$, and the longitudinal polarization corresponds to the symmetric combination of $I = 1, J = 2$.

⁵The Schouten identity reads $[12] [34] + [13] [42] + [14] [23] = 0$, and similarly for the angle brackets.

Above we have chosen to write the amplitude as a sum of permutations over the spinor factors. Alternatively, we can write it such that the functions of the s_{ij} 's are manifestly symmetric, with

$$\begin{aligned}
 \mathcal{M}\left(Z'(\mathbf{p}_4); g^{a+}(p_1); g^{b+}(p_2); g^{c+}(p_3)\right) &= \\
 &= [12][23][31] \times [41] \langle 12 \rangle [24] \times \left[+ f^{abc} \left(\frac{1}{s_{12}} f_{-4}^-(1; 2) - \frac{1}{s_{13}} f_{-4}^-(1; 3) - \frac{1}{s_{23}} f_{-4}^-(3; 2) \right) \right. \\
 &\quad \left. - d^{abc} \left(\frac{1}{s_{12}} f_{-4}^+(1; 2) + \frac{1}{s_{13}} f_{-4}^+(1; 3) + \frac{1}{s_{23}} f_{-4}^+(3; 2) \right) \right] \\
 &+ m d^{abc} [12][23][31] \left[\frac{\langle 24 \rangle [24]}{s_{23}} f_{-4}^+(2; 3) - \frac{[14] \langle 14 \rangle}{s_{13}} f_{-4}^+(1; 3) \right] \\
 &- m f^{abc} [12][23][31] \left[\frac{\langle 24 \rangle [24]}{s_{23}} f_{-4}^-(2; 3) + \frac{[14] \langle 14 \rangle}{s_{13}} f_{-4}^-(1; 3) \right] \tag{3.14}
 \end{aligned}$$

Using momentum conservation it is easy to check that the spinor prefactor $[12][23][31] \times [41] \langle 12 \rangle [24]$ is actually completely symmetric under exchange of 1,2,3, up to terms of order m . This form of the amplitude is convenient for some purposes as we will see below.

Finally, recall that we chose to work with the dotted-indices reduced amplitude, eq. (3.5). Using the undotted reduced amplitude would give an equivalent solution. We will return to this point below when we discuss the massless limit.

3.2 The Z' ; $--+$ amplitude

We now turn to the choice $h_1 = h_2 = -h_3 = -1$ for the gluon helicities. Using eq. (3.9) the amplitude is,

$$\begin{aligned}
 \mathcal{M}\left(Z'(\mathbf{p}_4); g^{a-}(p_1); g^{b-}(p_2); g^{c+}(p_3)\right) &= d^{abc} \left\{ \frac{[13][23][14][24]}{[12]^4} A_0^+(1; 2) + \frac{[34]^2}{[12]^2} D_0^+(1; 2) \right. \\
 &+ \frac{1}{[12]^4} \left[\left([23]^2 [14]^2 + [13]^2 [24]^2 \right) B_0^+(1; 2) + \left([23]^2 [14]^2 - [13]^2 [24]^2 \right) B_0^-(1; 2) \right] \\
 &\left. + \frac{[34]}{[12]^3} \left[([23][14] + [13][24]) C_0^-(1; 2) + ([23][14] - [13][24]) C_0^+(1; 2) \right], \right\} \tag{3.15}
 \end{aligned}$$

where $A_0^\pm(1; 2)$, $B_0^\pm(1; 2)$, $C_0^\pm(1; 2)$, $D_0^\pm(1; 2)$ are all dimensionless, analytic functions of the s_{ij} 's, which are symmetric or anti-symmetric under $1 \leftrightarrow 2$. The symmetric (antisymmetric) functions are denoted by a $+$ ($-$) superscript. Using Schouten identities we can rewrite the full amplitude as,

$$\begin{aligned}
 \mathcal{M}\left(Z'; g^{a-}(p_1); g^{b-}(p_2); g^{c+}(p_3)\right) &= d^{abc} \left[\langle 12 \rangle^2 [34]^2 D_{-4}^+(1; 2) \right. \\
 &+ \langle 12 \rangle^4 [13][23][14][24] A_{-8}^+(1; 2) + \langle 12 \rangle^3 [34] \left([23][14] + [13][24] \right) C_{-6}^-(1; 2) \left. \right] \\
 &\times f^{abc} \left[\langle 12 \rangle^2 [34]^2 D_{-4}^-(1; 2) + \langle 12 \rangle^4 [13][23][14][24] A_{-8}^-(1; 2) \right. \\
 &\left. + \langle 12 \rangle^3 [34] \left([23][14] + [13][24] \right) C_{-6}^+(1; 2) \right], \tag{3.16}
 \end{aligned}$$

with the coefficient functions,

$$\begin{aligned}
 D_{-4}^+ &= \frac{d_8}{\Lambda^4} + \frac{d_{10}^{(1)}}{\Lambda^6} s_{12} + \frac{d_{12}^{(1)} s_{12}^2 + d_{12}^{(2)} s_{13} s_{23}}{\Lambda^8}, & D_{-4}^- &= (s_{23} - s_{13}) \left(\frac{d_{10}^{(2)}}{\Lambda^6} + \frac{d_{12}^{(5)} s_{12}}{\Lambda^8} \right), \\
 A_{-8}^+ &= \frac{d_{12}^{(3)}}{\Lambda^8}, & A_{-8}^- &= 0, \\
 C_{-6}^+ &= \frac{d_{10}^{(3)}}{\Lambda^6} + \frac{d_{12}^{(6)}}{\Lambda^8} s_{12}, & C_{-6}^- &= (s_{23} - s_{13}) \frac{d_{12}^{(4)}}{\Lambda^8}.
 \end{aligned}
 \tag{3.17}$$

Again, this form of the amplitude encapsulates all three Z' polarizations. The number of independent operators can be read from eq. (3.17). There is one operator at dimension 8, of the form $Z'G^3$, with color indices contracted with d^{abc} , and three operators of the form $D^2Z'G^3$ at dimension 10; two with d^{abc} and one with f^{abc} . At dimension 12 there are six operators of the form $D^4Z'G^3$; five with d^{abc} and one with f^{abc} .

3.3 The massless Z' amplitudes

Amplitudes with a massless Z' can be calculated directly, much like we did for the massive Z' . Recall that our starting point above was the “dotted” amplitude eq. (3.5). In the massive case, the dotted and undotted solutions are equivalent, since the different Z' polarizations are related. For a massless Z' , the dotted form we used above gives the positive-helicity Z' , while the undotted form gives the negative-helicity Z' . Other than that, the derivation would proceed just as above, with the 4-spinors unbolded, and with $m = 0$.

It is instructive however to obtain the massless amplitudes by taking the massless limit of the amplitudes we already calculated. Recall that eqs. (3.11) and (3.16) describe the three Z' polarizations. Thus the massive- Z' amplitudes split into the positive and negative massless- Z' helicities, plus the longitudinal polarization, which should coincide with the scalar plus 3-gluon amplitudes, $\mathcal{M}(h; ggg)$. In the massless limit, $|4^{I=2}\rangle$ goes to zero (see appendix B), so only the Z'^+ amplitudes survive in eqs. (3.11) and (3.16). This is not surprising, since we used the dotted-indices ansatz eq. (3.5), which reduce to the positive-helicity Z' amplitudes in the massless limit. It is therefore useful to rewrite the amplitudes such that both $|4^{I=1}\rangle$ and $|4^{I=2}\rangle$ appear, and all three polarizations are transparent in the massless limit. Terms with $|4\rangle|4\rangle$ then describe the positive polarization as before, while the negative polarization corresponds to terms with $|4\rangle|4\rangle$, and the longitudinal polarization corresponds to mixed terms with $|4\rangle|4\rangle$. The different polarizations should appear with different suppressions of Λ , since in the massless limit the net helicity of the operator is related to its dimension. Another way to say this is that amplitudes with different Z' helicities are related by different factors of the mass m , corresponding to helicity flips on the Z' leg.

To rewrite the massive amplitudes eqs. (3.11) and (3.16), we use the momentum p_4 to convert between $|4\rangle$ and $|4\rangle$ (see eq. (A.17) and appendix B). Consider first $\mathcal{M}(Z'; - - +)$. Simply taking the massless limit in eq. (3.16), the three different spinor structures collapse into a single structure, corresponding to the positive Z' helicity. Using eq. (A.18) we then

rewrite the amplitude as,

$$\begin{aligned}
 \mathcal{M}(Z'; g^{a-}(p_1); g^{b-}(p_2); g^{c+}(p_3)) & \tag{3.18} \\
 &= d^{abc} \langle 12 \rangle^2 \times \left[[34]^2 \tilde{f}_{-4}^+(1; 2) + [13] [23] \langle 14 \rangle \langle 24 \rangle \tilde{f}_{-6}^+(1; 2) \right. \\
 &\quad \left. + [34] ([31] \langle 14 \rangle - [32] \langle 24 \rangle) \tilde{f}_{-5}^-(1; 2) \right] \\
 &+ f^{abc} \langle 12 \rangle^2 \times \left[[34]^2 \tilde{f}_{-4}^-(1; 2) + [13] [23] \langle 14 \rangle \langle 24 \rangle \tilde{f}_{-6}^-(1; 2) \right. \\
 &\quad \left. + [34] ([31] \langle 14 \rangle - [32] \langle 24 \rangle) \tilde{f}_{-5}^+(1; 2) \right]
 \end{aligned}$$

where we redefined the coefficient functions with,

$$\begin{aligned}
 \tilde{f}_{-4}^+(1; 2) &= \frac{d_8}{\Lambda^4} + \frac{d_{10}^{(1)}}{\Lambda^6} s_{12} + \frac{d_{12}^{(1)} s_{12}^2 + d_{12}^{(2)} s_{13} s_{23}}{\Lambda^8}, & \tilde{f}_{-4}^-(1; 2) &= (s_{23} - s_{13}) \left(\frac{d_{10}^{(3)}}{\Lambda^6} + \frac{d_{12}^{(4)}}{\Lambda^8} s_{12} \right), \\
 \tilde{f}_{-5}^+(1; 2) &= \frac{m d_{10}^{(2)}}{\Lambda^6} + \frac{m d_{12}^{(3)}}{\Lambda^8} s_{12}, & \tilde{f}_{-5}^-(1; 2) &= (s_{13} - s_{23}) \frac{m d_{12}^{(5)}}{\Lambda^8}, \\
 \tilde{f}_{-6}^+(1; 2) &= \frac{m^2 s_{12} d_{12}^{(6)}}{\Lambda^8}, & \tilde{f}_{-6}^-(1; 2) &= 0,
 \end{aligned} \tag{3.19}$$

where $\tilde{f}_{-6}^\pm = m^2 A_{-8}^\pm$ and $\tilde{f}_{-5}^\pm = m C_{-6}^\pm$. It is now easy to see the three spin polarizations both in the massive and in the massless case. The positive helicity Z' is given by terms with two $|4\rangle$ spinors, the negative helicity is given by terms with two $|4\rangle$ spinors, and the longitudinal polarization corresponds to the mixed terms.

In the massless limit, only $|4^1\rangle$ and $|4^2\rangle$ survive, so we can simply unbold the 4-spinors in eq. (3.18). Furthermore, explicit factors of m which appear in the coefficient functions of eq. (3.19) can be absorbed by rescaling Λ . Thus for example, we can rewrite $m^2 s_{12} d_{12}^{(6)}/\Lambda^8$ as $s_{12} d_{12}^{(6)}/\tilde{\Lambda}^6$. This contribution is then associated with a dimension-10 operator. This is just as expected. The mass m is not a parameter of the massless theory, and Z'^+ and Z'^- amplitudes are generated by operators of different dimensions. Examining eq. (3.18), we see that the $[34]^2$ terms give $\mathcal{M}(Z'^+; - - +)$, while the $\langle 14 \rangle \langle 24 \rangle$ terms give $\mathcal{M}(Z'^-; - - +)$. Thus the massless $\mathcal{M}(Z'^+; - - +)$ amplitude gets contributions from \tilde{f}_{-4}^\pm . There is one operator with d^{abc} at dimension 8, two operators (one with d^{abc} and one with f^{abc} at dimension 10, and three operators at dimension 12 (two with d^{abc} and one with f^{abc}). The $\mathcal{M}(Z'^-; - - +)$ amplitude gets contributions from \tilde{f}_{-6}^\pm . There is one operator with d^{abc} at dimension 10 and two operators, one with d^{abc} and one with f^{abc} at dimension 12. In this case too we used the Mathematica notebook of [4] to derive the EFT operators with a massless vector plus three gluon operators, and checked that the results agree. We summarize the EFT operators and their numbers in table 3.

Finally, we can verify the relation between the amplitude with a longitudinally-polarized Z' and the scalar amplitude $\mathcal{M}(h; g^- g^- g^+)$. The former is easily read-off

Mass dimension	Operators	
	$\mathcal{M}(+++)$	$\mathcal{M}(- - +)$
8	$G_{\text{SD}}^3 Z'_{\text{SD}} [1, d^{abc}]$	$G_{\text{ASD}}^2 G_{\text{SD}} Z'_{\text{SD}} [1, d^{abc}]$
10	$\mathcal{D}^2 G_{\text{SD}}^3 Z'_{\text{SD}} [1, d^{abc}; 1, f^{abc}]$ $\mathcal{D}^2 G_{\text{SD}}^3 Z'_{\text{ASD}} [1, d^{abc}]$	$\mathcal{D}^2 G_{\text{ASD}}^2 G_{\text{SD}} Z'_{\text{ASD}} [1, d^{abc}]$ $\mathcal{D}^2 G_{\text{ASD}}^2 G_{\text{SD}} Z'_{\text{SD}} [1, d^{abc}; 1, f^{abc}]$
12	$\mathcal{D}^4 G_{\text{SD}}^3 Z'_{\text{SD}} [1, d^{abc}]$	$\mathcal{D}^4 G_{\text{ASD}}^2 G_{\text{SD}} Z'_{\text{ASD}} [1, d^{abc}; 1, f^{abc}]$ $\mathcal{D}^4 G_{\text{ASD}}^2 G_{\text{SD}} Z'_{\text{SD}} [2, d^{abc}; 1, f^{abc}]$

Table 3. Operators contributing to the $Z'ggg$ amplitude for a massless Z' . The numbers of independent operators per each color structure are shown in brackets. (In the table, we use Z' to denote the field strength).

eq. (3.18). Only the f^{abc} term contributes at this order,

$$\begin{aligned}
 \mathcal{M}(Z'^0; g^{a-}(p_1); g^{b-}(p_2); g^{c+}(p_3)) &= \langle 12 \rangle^2 [34] \left[[31] \langle 14 \rangle - [32] \langle 24 \rangle \right] \\
 &\quad \times \left(\tilde{f}_{-5}^+(1; 2) f^{abc} + \tilde{f}_{-5}^-(1; 2) d^{abc} \right) \\
 &= \langle 12 \rangle^2 [31] [32] \langle 12 \rangle \left(\tilde{f}_{-5}^+(1; 2) f^{abc} + \tilde{f}_{-5}^-(1; 2) d^{abc} \right) \\
 &= \frac{\langle 12 \rangle^3}{\langle 13 \rangle \langle 23 \rangle} s_{13} s_{23} \left(\tilde{f}_{-5}^+(1; 2) f^{abc} + \tilde{f}_{-5}^-(1; 2) d^{abc} \right) \\
 &= \frac{\langle 12 \rangle^3}{\langle 13 \rangle \langle 23 \rangle} s_{13} s_{23} \left(f^{abc} \left(\frac{m d_{10}^{(2)}}{\Lambda^6} + \frac{m d_{12}^{(3)}}{\Lambda^8} s_{12} \right) \right. \\
 &\quad \left. + \frac{d^{abc} d_{12}^{(5)} m (s_{13} - s_{23})}{\Lambda^8} + \dots \right) \quad (3.20)
 \end{aligned}$$

which agrees with the result eq. (2.26) upon replacing angle brackets by square brackets, owing to the opposite gluon helicities we have. Furthermore, this contribution starts at m/Λ^6 , namely at dimension-9, which is where $\mathcal{M}(h; - - +)$ first appears. What we are seeing is nothing but the Higgs mechanism. The longitudinal Z' polarization comes from the Goldstone boson, so in the EFT operators generating the amplitudes we can replace Z'_μ by $\partial_\mu h$. Thus the relevant $h; - - +$ amplitude must come from an operator containing at least one derivative. The first such operator is indeed the dimension-9 operator $D^2 h G^3$, which appears with f^{abc} (see table 1).

Let us now turn to the massless limit of the $Z'; + + +$ amplitude. In this case we find,

$$\begin{aligned}
 \mathcal{M}(Z'; g^{a+}(p_1); g^{b+}(p_2); g^{c+}(p_3)) &= \quad (3.21) \\
 &= d^{abc} \left(c_8^{(1)} \frac{1}{\Lambda^4} + c_{10}^{(1)} \frac{s_{12}}{\Lambda^6} + c_{12}^{(2)} \frac{s_{13} s_{23}}{\Lambda^8} \right) [13] [23] [14] [24] + \text{permutations} \\
 &\quad + f^{abc} c_{10}^{(2)} \frac{s_{13} - s_{23}}{\Lambda^6} [13] [23] [14] [24] + \text{permutations}
 \end{aligned}$$

$$\begin{aligned}
& + d^{abc} c_{12}^{(1)} \frac{m^2}{\Lambda^8} [13] [23] [12]^2 \langle 14 \rangle \langle 24 \rangle + \text{permutations} \\
& + f^{abc} \frac{m c_{12}^{(3)}}{\Lambda^8} \left[(s_{12} - s_{13}) \langle 24 \rangle [24] + (s_{12} - s_{23}) \langle 14 \rangle [14] \right] [12] [23] [31] ,
\end{aligned}$$

where we absorbed some signs and a factor of 2 in the coefficients.⁶ It is now straightforward to see the massless limit of this expression. All we need to do is to absorb m in the scale, and unbold 4-spinors. The first two lines, with $[14][24]$, give $\mathcal{M}(Z'^+; +++)$, and the third line, with $\langle 14 \rangle \langle 24 \rangle$, gives $\mathcal{M}(Z'^-; +++)$.⁷ The counting and correspondence to the EFT operators is summarized in table 3, and reproduces the results of [4].

Finally, the fourth line of eq. (3.21) gives $\mathcal{M}(Z'^0; +++)$. Note that this the lowest order contribution to this amplitude in $1/\Lambda$. In particular, the $c_{10}^{(2)}$ term in eq. (3.21) does not contribute. We can rewrite this term as,

$$\begin{aligned}
& f^{abc} \frac{m c_{12}^{(3)}}{\Lambda^8} \left(s_{12}s_{13} + s_{23}s_{13} + s_{12}s_{23} + \mathcal{O}(m^2) \right) [12] [23] [31] = \\
& = f^{abc} \frac{c_{12}^{(3)}}{\Lambda^7} \left(s_{12}s_{13} + s_{23}s_{13} + s_{12}s_{23} + \right) [12] [23] [31] + \mathcal{O}(m^2) ,
\end{aligned} \tag{3.22}$$

which is the same as the dimension-11 contribution in eq. (2.21). Unlike in the Z' ; $--+$ case, here the longitudinal Z' polarization does not reproduce the leading contribution in $h; +++)$, which appears at dimension-7, but only the next non-zero contribution, which is dimension-11. This is consistent with what we expect based on the Higgs mechanism. In an EFT operator generating the $Z'^0; +++)$ amplitude we can replace Z'_μ by $\partial_\mu h$. Thus the corresponding scalar operator should contain at least one derivative. The first such operator is $D^4 h G^3$ (see table 1), with the color structure f^{abc} . This is indeed a dimension-11 operator.

To summarize, we have seen how the massive Z' EFT amplitudes decompose into three distinct amplitudes corresponding to the different Z' polarizations. In the massless limit, these simply reduce to the Z'^+ -helicity amplitude, the Z'^- -helicity amplitude, and the scalar amplitude, which supplies the longitudinal Z' polarization.

4 Conclusions

We have used on-shell methods to derive tree-level helicity amplitudes involving a new SM-singlet, of spin zero or one, with couplings to gluons. Specifically, we calculated $h; ggg$ amplitudes and $hh; gg$ amplitudes for a scalar field h , which is either massive or massless, up to dimension-13. We also calculated $Z'; ggg$ amplitudes for a massive vector Z' , up to dimension-12, and showed how these amplitudes decompose into the massless vector plus scalar amplitudes.

It is straightforward to replace the gluons by photons in our results. Furthermore, the amplitudes we calculated can be used to obtain amplitudes with the gluons replaced by

⁶It is easy to see, using eq. (3.14), that $c_{12}^{(1)}$ and $c_{12}^{(3)}$ can be absorbed in the remaining terms up to pieces of order m , after symmetrizing and using the Schouten identities.

⁷Thus, there is no contribution to the $\mathcal{M}(Z'^-; +++)$ amplitude with f^{abc} up to $d \leq 12$.

weak gauge bosons in the high-energy limit. Throughout, we ignored quarks, and it would be interesting to extend this approach to include fermions, and in particular, to reconstruct the full SM EFT. The calculation of EFT amplitudes at the loop level, where the effects of renormalization and operator mixing would show up, is another obvious direction that we plan to explore.

Our results can be used to calculate the LHC production and decay of new massive scalars or vectors coupled to the SM gluons through higher-dimension operators. In particular, since spin information is preserved, they allow for various spin and coupling measurements of the new particles.

As we have shown, it is easy to infer the structure of EFT amplitudes, and thereby count the number of operators of very high dimensionality. For practical purposes however, the contributions of interest are the lowest order ones. When interpreting LHC measurements, the EFT results are reliable only for energies sufficiently smaller than Λ . Thus, deriving the structure of amplitudes at dimension-13 is probably just an academic, if pleasing, exercise. Still, what on-shell methods clearly reveal is the power of Lorentz symmetry when applied to physical quantities. Gauge-redundancies and off-shell variables are stripped away, exposing the simplicity of the possible underlying structures of the theory. In the case of EFTs, operator redundancies are stripped away too. One may therefore wonder whether an on-shell approach to effective field theories would ultimately lead us towards a more fundamental theory beyond the standard model.

Acknowledgments

We thank Teppei Kitahara for pointing out a sign error in a previous version of this paper, and for useful discussions. YS thanks the Aspen Center for Physics, supported in part by NSF-PHY-1607611, where this work was completed. Research supported by the Israel Science Foundation (Grant No. 720/15), by the United-States-Israel Binational Science Foundation (BSF) (Grant No. 2014397), and by the ICORE Program of the Israel Planning and Budgeting Committee (Grant No. 1937/12).

A Notation

We follow the conventions and notation of [17] for spinors, with the metric $(+, -, -, -)$. The Levi-Civita symbol is given by

$$\epsilon^{\alpha\beta} = -\epsilon_{\alpha\beta} = \epsilon^{\dot{\alpha}\dot{\beta}} = -\epsilon_{\dot{\alpha}\dot{\beta}} = \begin{pmatrix} 0 & 1 \\ -1 & 0 \end{pmatrix}, \tag{A.1}$$

and can be used to raise and lower spinor indices, such that

$$\psi^\alpha = \epsilon^{\alpha\beta}\psi_\beta, \quad \psi_\alpha = \epsilon_{\alpha\beta}\psi^\beta, \quad \epsilon^{\alpha\beta}\epsilon_{\beta\gamma} = \delta^\alpha_\gamma \tag{A.2}$$

with the same expression for the dotted indices.

Inside spinor brackets, indices are contracted such that

$$\langle \lambda \chi \rangle \equiv \lambda_\alpha \chi^\alpha = -\lambda^\alpha \chi_\alpha, \quad [\lambda \chi] \equiv \tilde{\lambda}^{\dot{\alpha}} \tilde{\chi}_{\dot{\alpha}} = -\tilde{\lambda}_{\dot{\alpha}} \tilde{\chi}^{\dot{\alpha}}. \quad (\text{A.3})$$

To simplify the notation we introduce the ‘‘half-bracket’’

$$\lambda^\alpha = |p\rangle, \quad \lambda_\alpha = \langle p|, \quad \tilde{\lambda}^{\dot{\alpha}} = |p], \quad \tilde{\lambda}_{\dot{\alpha}} = \langle p|, \quad (\text{A.4})$$

such that lightlike momenta are given by

$$p^{\alpha\dot{\alpha}} = |p\rangle[p|, \quad p_{\dot{\alpha}\alpha} = |p]\langle p|, \quad (\text{A.5})$$

where

$$p^{\alpha\dot{\alpha}} \equiv \sigma_\mu^{\alpha\dot{\alpha}} p^\mu, \quad p_{\dot{\alpha}\alpha} \equiv \bar{\sigma}_{\dot{\alpha}\alpha}^\mu p_\mu, \quad (\text{A.6})$$

and $\sigma^{\mu\alpha\dot{\alpha}} = (\delta^{\alpha\dot{\alpha}}, \vec{\sigma}^{\alpha\dot{\alpha}})$, $\bar{\sigma}_{\dot{\alpha}\alpha}^\mu = (\delta^{\dot{\alpha}\alpha}, -\vec{\sigma}_{\dot{\alpha}\alpha})$.

It is sometimes useful to have explicit expressions for the spinors. Writing,

$$p^\mu = E(1, \cos\phi \sin\theta, \sin\phi \sin\theta, \cos\theta),$$

we have,

$$|p\rangle = \sqrt{2E} \begin{pmatrix} s \\ -c \end{pmatrix}, \quad [p| = \sqrt{2E} (s, -c^*), \quad (\text{A.7})$$

where $s \equiv \sin(\frac{\theta}{2})$ and $c \equiv \cos(\frac{\theta}{2})e^{i\phi}$.

Contracting lightlike momenta amounts to tracing over the half-brackets with a $\frac{1}{2}$ factor

$$p \cdot q = p^\mu q_\mu = \frac{1}{2} p^{\alpha\dot{\alpha}} q_{\dot{\alpha}\alpha} \equiv \frac{1}{2} \text{Tr} \{ |p\rangle [pq] \langle q| \} = \frac{1}{2} \langle qp \rangle [pq], \quad (\text{A.8})$$

The decomposition in eq. (A.5) is invariant under

$$|p\rangle \rightarrow \xi |p\rangle, \quad [p| \rightarrow \frac{1}{\xi} [p|, \quad (\text{A.9})$$

where for real momenta ξ is just a pure phase. Eq. (A.9) is thus a U(1) little group transformation of the lightlike momentum.

The polarizations for a massless vector are given by

$$[\epsilon_p^-(r)]^{\alpha\dot{\alpha}} = \sqrt{2} \frac{|p\rangle[r|}{[pr]}, \quad [\epsilon_p^+(r)]^{\alpha\dot{\alpha}} = \sqrt{2} \frac{|r\rangle[p|]{\langle rp|}, \quad (\text{A.10})$$

where r is a reference momentum not aligned with p , i.e., $p \cdot r \neq 0$.

The polarizations eq. (A.10) are not invariant under the little group transformation eq. (A.9). Thus, a positive helicity gluon carries helicity weight -2 , while a negative helicity gluon has helicity weight $+2$.

Massive momenta can be decomposed in much the same way. However, because the determinant is not zero the decomposition will require a pair of massless spinors

$$p^{\alpha\dot{\alpha}} = \psi^\alpha \tilde{\psi}^{\dot{\alpha}} + \eta^\alpha \tilde{\eta}^{\dot{\alpha}}. \quad (\text{A.11})$$

Following [21] we pack the pair into a doublet, such that

$$\lambda_I \equiv \begin{pmatrix} \psi & \eta \end{pmatrix}, \quad \tilde{\lambda}^I \equiv \begin{pmatrix} \tilde{\psi} \\ \tilde{\eta} \end{pmatrix}, \quad (\text{A.12})$$

which enables us to write the massive momentum

$$p^{\alpha\dot{\alpha}} = \lambda_I^\alpha \tilde{\lambda}^{\dot{\alpha}I} \equiv |\mathbf{p}_I\rangle [\mathbf{p}^I], \quad p_{\dot{\alpha}\alpha} = -\tilde{\lambda}_{\dot{\alpha}I} \lambda_\alpha^I \equiv -|\mathbf{p}_I]\langle \mathbf{p}^I|, \quad (\text{A.13})$$

where $I = 1, 2$ is an $SU_L(2)$. Note that for real momenta we have the reality conditions,

$$\langle \mathbf{p}^I |^\dagger = -|\mathbf{p}_I], \quad |\mathbf{p}_I]^\dagger = -\langle \mathbf{p}^I|, \quad |\mathbf{p}_I]^\dagger = [\mathbf{p}^I|, \quad [\mathbf{p}^I|^\dagger = |\mathbf{p}_I]. \quad (\text{A.14})$$

The little group transformation now takes the form $\tilde{\lambda}^I \rightarrow W^I_J \tilde{\lambda}^J$, $\lambda_I \rightarrow (W^{-1})^J_I \lambda_J$ where the W 's are $SU(2)$ matrices. Squaring a massive momentum gives

$$p^2 = p^{\alpha\dot{\alpha}} p_{\dot{\alpha}\alpha} = \frac{1}{2} [\mathbf{p}^J \mathbf{p}^I] \langle \mathbf{p}_I \mathbf{p}_J \rangle = m^2. \quad (\text{A.15})$$

Expanding the brackets in $SU_L(2)$ invariants we get

$$[\mathbf{p}^J \mathbf{p}^I] = \epsilon^{IJ} \tilde{\mathfrak{M}}, \quad \langle \mathbf{p}_I \mathbf{p}_J \rangle = \epsilon_{IJ} \mathfrak{M}, \quad (\text{A.16})$$

where $\tilde{\mathfrak{M}} \times \mathfrak{M} = m^2$ and the $SU_L(2)$ indices can be raised and lowered with the Levi-Civita symbol, just as in (A.2), with $\epsilon^{IJ} = -\epsilon_{IJ}$ and $\epsilon^{12} = 1$. Forbidding opposite rephasing of the mass parameters $\tilde{\mathfrak{M}}$ and \mathfrak{M} , which are not little group transformations, we can set $\tilde{\mathfrak{M}} = \mathfrak{M} = m$ as in [21]. With the decomposition of the massive momentum eq. (A.13), we can trade any dotted spinor for an undotted spinor, and vice versa,

$$p|\mathbf{p}^J\rangle = m|\mathbf{p}^J], \quad p|\mathbf{p}^J] = m|\mathbf{p}^J\rangle, \quad [\mathbf{p}_J|p = -m\langle \mathbf{p}_J|, \quad \langle \mathbf{p}_J|p = -m[\mathbf{p}_J|. \quad (\text{A.17})$$

For amplitudes in which particles 1, 2 and 3 are massless, while 4 is massive, momentum conservation then implies,

$$\langle 12 \rangle [24] + \langle 13 \rangle [34] + m \langle 14 \rangle = 0, \quad [12] \langle 24 \rangle + [13] \langle 34 \rangle + m [14] = 0, \quad (\text{A.18})$$

and similarly for permutations of 1, 2, 3.

B High energy limit

The massive spinor notation relies on splitting the massive momentum into two lightlike vectors. To avoid index clutter, let us write $p_4 = k + q$, with $k^2 = q^2 = 0$ and $2k \cdot q = m^2$. Then we can identify $|4^1] = |k]$, $|4^2] = |q]$, $|4^1\rangle = |q\rangle$, $|4^2\rangle = -|k\rangle$. In the massless limit, without loss of generality, $q \rightarrow 0$ and $k \rightarrow p_4$. Thus $|4^1\rangle, |4^2] = \mathcal{O}(m)$, while $|4^2\rangle, |4^1]$ are finite. Consider for example the square bracket $[14^2] = [1q]$. We can rewrite it as follows,

$$[1q] = \frac{1}{m} [1p_4|k] = -\frac{1}{m} \left([12] \langle 2k \rangle + [13] \langle 3k \rangle \right), \quad (\text{B.1})$$

where in the last step we used momentum conservation. This is nothing but eq. (A.18), written in terms of the momenta k and q . Note that there is nothing singular in the massless limit of this equation, since the numerator of the r.h.s. is $\mathcal{O}(m^2)$. Thus both sides of eq. (B.1) are order m .

Similarly,

$$[1k] = \frac{1}{m} [1|p_4|q] = -\frac{1}{m} \left([12] \langle 2q \rangle + [13] \langle 3q \rangle \right). \quad (\text{B.2})$$

Both sides of this equation are finite.

Finally, it is useful to write explicit examples of the various spinors. Choosing the z axis as the direction of the massive momentum, $p^\mu = (E, 0, 0, p)$, we can take,

$$k^\mu = \frac{E+p}{2}(1, 0, 0, 1), \quad q^\mu = \frac{E-p}{2}(1, 0, 0, -1), \quad (\text{B.3})$$

with $p = k + q$. In the high energy limit, $E - p \approx \frac{m^2}{2E}$. With the timelike momentum p give by eq. (A.13) we can recover the boldface spinors with their little group indices

$$|\mathbf{p}_1\rangle = \sqrt{E+p} \begin{pmatrix} 0 \\ 1 \end{pmatrix}, \quad |\mathbf{p}_2\rangle = \sqrt{E-p} \begin{pmatrix} 1 \\ 0 \end{pmatrix}, \quad (\text{B.4})$$

where we used eq. (A.7) and chose the kets such that eq. (A.16) holds. Then in the high energy limit,

$$|\mathbf{p}^1\rangle, |\mathbf{p}_2\rangle, [\mathbf{p}^2], [\mathbf{p}_1] \sim \mathcal{O}\left(\frac{m}{\sqrt{E}}\right), \quad (\text{B.5})$$

while

$$|\mathbf{p}_1\rangle, |\mathbf{p}^2\rangle, [\mathbf{p}^1], [\mathbf{p}_2] \sim \mathcal{O}(\sqrt{E}). \quad (\text{B.6})$$

Open Access. This article is distributed under the terms of the Creative Commons Attribution License ([CC-BY 4.0](https://creativecommons.org/licenses/by/4.0/)), which permits any use, distribution and reproduction in any medium, provided the original author(s) and source are credited.

References

- [1] E.E. Jenkins and A.V. Manohar, *Algebraic structure of lepton and quark flavor invariants and CP-violation*, *JHEP* **10** (2009) 094 [[arXiv:0907.4763](https://arxiv.org/abs/0907.4763)] [[INSPIRE](#)].
- [2] B. Grzadkowski, M. Iskrzynski, M. Misiak and J. Rosiek, *Dimension-six terms in the Standard Model Lagrangian*, *JHEP* **10** (2010) 085 [[arXiv:1008.4884](https://arxiv.org/abs/1008.4884)] [[INSPIRE](#)].
- [3] L. Lehman and A. Martin, *Low-derivative operators of the Standard Model effective field theory via Hilbert series methods*, *JHEP* **02** (2016) 081 [[arXiv:1510.00372](https://arxiv.org/abs/1510.00372)] [[INSPIRE](#)].
- [4] B. Henning, X. Lu, T. Melia and H. Murayama, *2, 84, 30, 993, 560, 15456, 11962, 261485, ...: higher dimension operators in the SM EFT*, *JHEP* **08** (2017) 016 [[arXiv:1512.03433](https://arxiv.org/abs/1512.03433)] [[INSPIRE](#)].
- [5] L. Lehman and A. Martin, *Hilbert series for constructing Lagrangians: expanding the phenomenologist's toolbox*, *Phys. Rev. D* **91** (2015) 105014 [[arXiv:1503.07537](https://arxiv.org/abs/1503.07537)] [[INSPIRE](#)].
- [6] B. Henning, X. Lu, T. Melia and H. Murayama, *Operator bases, S-matrices and their partition functions*, *JHEP* **10** (2017) 199 [[arXiv:1706.08520](https://arxiv.org/abs/1706.08520)] [[INSPIRE](#)].

- [7] B. Gripaios and D. Sutherland, *DEFT: a program for operators in EFT*, *JHEP* **01** (2019) 128 [[arXiv:1807.07546](#)] [[INSPIRE](#)].
- [8] C. Cheung, K. Kampf, J. Novotny, C.-H. Shen and J. Trnka, *A periodic table of effective field theories*, *JHEP* **02** (2017) 020 [[arXiv:1611.03137](#)] [[INSPIRE](#)].
- [9] V. Del Duca, A. Frizzo and F. Maltoni, *Higgs boson production in association with three jets*, *JHEP* **05** (2004) 064 [[hep-ph/0404013](#)] [[INSPIRE](#)].
- [10] L.J. Dixon, E.W.N. Glover and V.V. Khoze, *MHV rules for Higgs plus multi-gluon amplitudes*, *JHEP* **12** (2004) 015 [[hep-th/0411092](#)] [[INSPIRE](#)].
- [11] L.J. Dixon, *A brief introduction to modern amplitude methods*, in *Proceedings, 2012 European School of High-Energy Physics (ESHEP 2012)*, La Pommeraye, Anjou, France, 6–19 June 2012, [CERN-2014-008](#), (2014), pg. 31 [[arXiv:1310.5353](#)] [[INSPIRE](#)].
- [12] L.J. Dixon and Y. Shadmi, *Testing gluon selfinteractions in three jet events at hadron colliders*, *Nucl. Phys. B* **423** (1994) 3 [Erratum *ibid.* **B 452** (1995) 724] [[hep-ph/9312363](#)] [[INSPIRE](#)].
- [13] C. Cheung and C.-H. Shen, *Nonrenormalization theorems without supersymmetry*, *Phys. Rev. Lett.* **115** (2015) 071601 [[arXiv:1505.01844](#)] [[INSPIRE](#)].
- [14] A. Azatov, R. Contino, C.S. Machado and F. Riva, *Helicity selection rules and noninterference for BSM amplitudes*, *Phys. Rev. D* **95** (2017) 065014 [[arXiv:1607.05236](#)] [[INSPIRE](#)].
- [15] H. Elvang and Y.-T. Huang, *Scattering amplitudes in gauge theory and gravity*, Cambridge University Press, Cambridge, U.K. (2015) [[INSPIRE](#)].
- [16] C. Cheung, *TASI lectures on scattering amplitudes*, in *Proceedings, Theoretical Advanced Study Institute in Elementary Particle Physics: anticipating the next discoveries in particle physics (TASI 2016)*, Boulder, CO, U.S.A., 6 June–1 July 2016, [World Scientific](#), Singapore (2018), pg. 571 [[arXiv:1708.03872](#)] [[INSPIRE](#)].
- [17] M.D. Schwartz, *Quantum field theory and the Standard Model*, Cambridge University Press, Cambridge, U.K. (2014).
- [18] S. Dawson, I.M. Lewis and M. Zeng, *Effective field theory for Higgs boson plus jet production*, *Phys. Rev. D* **90** (2014) 093007 [[arXiv:1409.6299](#)] [[INSPIRE](#)].
- [19] S. Dawson, I.M. Lewis and M. Zeng, *Usefulness of effective field theory for boosted Higgs production*, *Phys. Rev. D* **91** (2015) 074012 [[arXiv:1501.04103](#)] [[INSPIRE](#)].
- [20] E. Conde and A. Marzolla, *Lorentz constraints on massive three-point amplitudes*, *JHEP* **09** (2016) 041 [[arXiv:1601.08113](#)] [[INSPIRE](#)].
- [21] N. Arkani-Hamed, T.-C. Huang and Y.-T. Huang, *Scattering amplitudes for all masses and spins*, [arXiv:1709.04891](#) [[INSPIRE](#)].
- [22] E. Witten, *Perturbative gauge theory as a string theory in twistor space*, *Commun. Math. Phys.* **252** (2004) 189 [[hep-th/0312171](#)] [[INSPIRE](#)].
- [23] E.H. Simmons, *Dimension-six gluon operators as probes of new physics*, *Phys. Lett. B* **226** (1989) 132 [[INSPIRE](#)].
- [24] J. Bramante, R.S. Hundi, J. Kumar, A. Rajaraman and D. Yaylali, *Collider searches for fermiophobic gauge bosons*, *Phys. Rev. D* **84** (2011) 115018 [[arXiv:1106.3819](#)] [[INSPIRE](#)].
- [25] J. Alwall, M. Khader, A. Rajaraman, D. Whiteson and M. Yen, *Searching for Z' bosons decaying to gluons*, *Phys. Rev. D* **85** (2012) 115011 [[arXiv:1202.4014](#)] [[INSPIRE](#)].
- [26] J. Kumar, A. Rajaraman and D. Yaylali, *Spin determination for fermiophobic bosons*, *Phys. Rev. D* **86** (2012) 115019 [[arXiv:1209.5432](#)] [[INSPIRE](#)].