

## MSSM: cornered and correlated

---

Ulrich Haisch<sup>a</sup> and Farvah Mahmoudi<sup>b,c</sup>

<sup>a</sup>*Rudolf Peierls Centre for Theoretical Physics, University of Oxford,  
OX1 3PN Oxford, U.K.*

<sup>b</sup>*CERN Theory Division, Physics Department,  
CH-1211 Geneva 23, Switzerland*

<sup>c</sup>*Clermont Université, Université Blaise Pascal, CNRS/IN2P3, LPC,  
BP 10448, 63000 Clermont-Ferrand, France*

*E-mail:* [u.haisch1@physics.ox.ac.uk](mailto:u.haisch1@physics.ox.ac.uk), [mahmoudi@in2p3.fr](mailto:mahmoudi@in2p3.fr)

**ABSTRACT:** Inspired by the latest results of ATLAS and CMS on the search for the standard model (SM) Higgs scalar, we discuss in this article the correlations between Higgs-boson properties, low-energy observables, such as  $B \rightarrow X_s \gamma$ ,  $B_s \rightarrow \mu^+ \mu^-$ , and  $(g - 2)_\mu$ , and the dark matter (DM) relic density. We focus on the corners of the MSSM parameter space where the  $pp \rightarrow h \rightarrow \gamma\gamma$  signal is enhanced due to the presence of a light stau state. In this region  $\tan\beta$ ,  $M_A$ ,  $A_t$ , and  $\mu$  take large values, and we find striking correlations between many of the considered observables. In particular, the  $B \rightarrow X_s \gamma$  branching fraction is enhanced, while the  $B_s \rightarrow \mu^+ \mu^-$  rate tends to be below the SM expectation. In contrast, the Higgs-boson couplings show good overall agreement with the preliminary experimental determinations, the DM abundance is consistent with observation, and the discrepancy in  $(g - 2)_\mu$  is reduced. The predicted deviations and found correlations could be tested in the near future and hence may become very valuable as guidelines and consistency checks.

**KEYWORDS:** Supersymmetry Phenomenology

**ARXIV EPRINT:** [1210.7806](https://arxiv.org/abs/1210.7806)

---

**Contents**

<b>1</b>	<b>Introduction</b>	<b>1</b>
<b>2</b>	<b>Analytic results</b>	<b>2</b>
2.1	Anatomy of Higgs-boson mass	3
2.2	Anatomy of Higgs-boson production and decay	4
2.3	Anatomy of low-energy observables	9
2.4	Anatomy of DM relic abundance	12
<b>3</b>	<b>Numerical analysis</b>	<b>14</b>
<b>4</b>	<b>Conclusions</b>	<b>22</b>

---

**1 Introduction**

Recently both the ATLAS [1] and the CMS [2] collaborations have announced the existence of a new bosonic state with a mass of around 125 GeV. This discovery defines a turning point in the history of elementary-particle physics: the almost 50 year-long hunt for the Higgs boson has come to a dazzling end. One of the most central problems in high-energy physics is now whether the properties of the newly observed resonance agree with that of the standard model (SM) Higgs scalar. In fact, a major experimental effort is directed towards shedding light on this question by measuring the various decay rates of the new particle as accurately as possible. While the achieved precision is so far insufficient to draw any final conclusion, one cannot help but noticing that the LHC data match well the SM prediction with one possible exception: the central value of the measured relative strength of the diphoton signal is too large by about 70% [1, 2]. If this enhancement survives further experimental scrutiny it may become the first convincing evidence of physics beyond the SM.

An economic possibility to modify the effective coupling between the Higgs boson and two photons without altering its main decay modes is provided by extra vector-like leptonic states (see for example [3–15]). In the context of the minimal supersymmetric SM (MSSM) a light, maximally mixed stau can be shown to increase the loop-induced  $h\gamma\gamma$  coupling [3], hence leading to the desired effect.

In this article we dissect the “light stau scenario” extending previous analyses [3, 4, 6, 10, 12, 16] that are similar in spirit. In particular, we will show that enhancements of the  $pp \rightarrow h \rightarrow \gamma\gamma$  signal associated to virtual stau exchange occur only in a narrow sliver in MSSM parameter space that features large (and positive) values of  $\tan\beta$ , the trilinear coupling  $A_t$ , and the  $\mu$  parameter. In this corner of phase space we investigate in detail the indirect constraints arising from the most relevant  $B$ -physics observables, the muon anomalous magnetic moment  $((g-2)_\mu)$ , and dark matter (DM). We observe striking and

testable correlations between the individual observables. Our main findings are as follows: *i)* An enhancement of the diphoton signal of the wanted order necessarily leads to an increase of the  $B \rightarrow X_s \gamma$  branching ratio of around 30%. With improved theoretical and experimental determinations of the inclusive radiative  $B$  decay this would represent an unambiguous signature of the light stau scenario. *ii)* For positive gluino mass parameters  $M_3$ , the decay rate of  $B_s \rightarrow \mu^+ \mu^-$  tends to be below its SM prediction with the exact value depending sensitively on  $A_t$  and  $\mu$ . Future precision measurements of the purely leptonic  $B_s$  decay by ATLAS, CMS, and LHCb hence represent sensitive probes of the MSSM parameters and its particle spectrum. *iii)* The supersymmetric (SUSY) parameters that play an important role in the  $B$ -physics observables also leave an imprint in the  $h \rightarrow b\bar{b}$  decay rate which typically turns out to be larger than expected from a SM Higgs boson. Tentatively, this seems to be in accordance with the findings reported by CDF [17] and DØ [18]. The  $h \rightarrow \tau^+ \tau^-$  channel, on the other hand, is in general suppressed, which is again in line with observation [2]. *iv)* Under the assumption of a light slepton/sneutrino spectrum the predicted MSSM corrections in  $(g-2)_\mu$  allow for a good description of the experimental data. *v)* In the presence of a light bino-like neutralino the specific MSSM scenario under study is compatible with thermal DM. In fact, the interplay between an enhancement in  $h \rightarrow \gamma\gamma$  and the requirements imposed by the relic density essentially fixes the mass splitting between the lightest neutralino and stau.

The intriguing correlations found in our article can be used as guidelines for the direct searches of SUSY particles, and will become extremely valuable as consistency and cross checks, in case the LHC high- $p_T$  experiments will start to see the first scalar partners.

This work is divided into two parts. In section 2 we pursue an analytic approach which will give clear insights into the anatomy of the Higgs-boson properties, the low-energy observables, and the DM relic abundance in the region of MSSM parameter space that predicts a significantly enhanced diphoton signal. Our analytic analyses will be complemented in section 3 by a detailed numerical study of the light stau scenario, employing state-of-the-art computer codes. A summary of our main results and conclusions are presented in section 4.

## 2 Analytic results

In this section we present simple formulas that allow to understand the impact of the various MSSM parameters on the prediction of the Higgs-boson properties (its mass, production cross section, and decay rates) as well as on the expectations for the most important low-energy observables (i.e.,  $B \rightarrow X_s \gamma$ ,  $B_s \rightarrow \mu^+ \mu^-$ , and  $(g-2)_\mu$ ). The requirements to achieve a proper thermal DM relic density are also discussed. Since in our numerical analysis of the MSSM parameter space, presented in section 3, we will employ the most advanced calculations, including all relevant contributions, the analytic expressions presented hereafter serve mostly an illustrative purpose.

**2.1 Anatomy of Higgs-boson mass**

In the decoupling limit of the MSSM, i.e.,  $M_A^2 \gg M_Z^2$ , the lightest CP-even Higgs boson (for a review including original references, see [19]) acquires the squared tree-level mass

$$M_h^2 \approx M_Z^2 c_{2\beta}^2 \left( 1 - \frac{M_Z^2}{M_A^2} s_{2\beta}^2 \right). \tag{2.1}$$

Here and in what follows we employ the shorthand notations  $s_{2\beta} = \sin(2\beta)$ ,  $c_{2\beta} = \cos(2\beta)$ , etc. Because  $c_{2\beta}^2 \propto 1$  in the large- $t_\beta$  limit and given the minus sign of the decoupling correction proportional to  $M_Z^2/M_A^2$ , it follows that  $M_h^2 \leq M_Z^2$ . Yet, the scalar field  $h$  has SM-like couplings when the pseudo-scalar Higgs-boson mass  $M_A$  is large, so that this state should have been discovered at LEP, if it were not for the radiative corrections which push its mass upward from the tree-level upper bound of  $M_Z$  to  $M_h > 114.4$  GeV [20].

In fact, these higher-order corrections can be very large, since the scalar sector of the MSSM involves strong couplings, such as those to the top quark and its scalar partners the stops. In the limits  $M_A, t_\beta \rightarrow \infty$ , that are the relevant ones for the upper bound on  $M_h$ , these corrections are simple to evaluate. The dominant one-loop contribution to (2.1) arises from an incomplete cancellation of top-quark and top-squark loops [21–23], and can be approximated by [24–28]

$$(\Delta M_h^2)_{\tilde{t}} \approx \frac{3G_F}{\sqrt{2}\pi^2} m_t^4 \left[ -L_{t\tilde{t}} + \frac{X_t^2}{m_{\tilde{t}}^2} \left( 1 - \frac{X_t^2}{12m_{\tilde{t}}^2} \right) \right], \tag{2.2}$$

where  $L_{t\tilde{t}} = \ln(m_{\tilde{t}}^2/m_t^2)$  with  $m_{\tilde{t}}^2 = m_{\tilde{t}_1} m_{\tilde{t}_2}$ , while  $X_t = A_t - \mu/t_\beta$  denotes the stop-mixing parameter, which depends on the trilinear stop-Higgs boson coupling  $A_t$  and the higgsino mass parameter  $\mu$ . We infer that for fixed stop spectrum scale  $m_{\tilde{t}}$ , the Higgs-boson mass correction from top/stop loops is maximised for  $|X_t| = \sqrt{6} m_{\tilde{t}} \approx 2.4 m_{\tilde{t}}$ , which is referred to as “maximal mixing” scenario. The manifest symmetry of (2.2) under the sign flip  $X_t \rightarrow -X_t$  is broken by finite two-loop threshold corrections, which induce a term  $4\alpha_s/\pi X_t/m_{\tilde{t}}$  [29, 30] that leads to slightly larger values of the Higgs-boson mass for  $X_t M_3 \approx A_t M_3 > 0$ .

For large  $t_\beta$  there are further contributions to (2.1) that can be relevant [26–28]. These corrections arise from the sbottom and stau sector and take the form ( $\tilde{f} = \tilde{b}, \tilde{\tau}$ )

$$(\Delta M_h^2)_{\tilde{f}} \approx -\frac{N_c^{\tilde{f}}}{\sqrt{2}G_F} \frac{y_f^4}{96\pi^2} \frac{\mu^4}{m_{\tilde{f}}^4}, \tag{2.3}$$

where  $N_c^{\tilde{b}} = 3$ ,  $N_c^{\tilde{\tau}} = 1$ ,  $m_{\tilde{f}}^2 = m_{\tilde{f}_1} m_{\tilde{f}_2}$ , and we have ignored logarithmic terms for simplicity. In the limit of interest, the bottom (tau) Yukawa coupling receives important one-loop correction whose dominant contribution depends on  $\text{sgn}(\mu M_3)$  ( $\text{sgn}(\mu M_2)$ ) [31–34]. The choice  $\mu M_3 > 0$  ( $\mu M_2 > 0$ ) tends to reduce the tree-level Yukawa coupling  $y_b = \sqrt{2}m_b/(vc_\beta)$  ( $y_\tau = \sqrt{2}m_\tau/(vc_\beta)$ ), and as a result decreases the strictly negative sbottom (stau) effect (2.3) on the Higgs-boson mass.

The relations (2.1) to (2.3) allow to draw some general conclusions concerning the impact of the observation of a Higgs boson with  $M_h \approx 125$  GeV on the MSSM parameter

space. First, from the expression  $M_h^2$ , we deduce that large values of  $t_\beta$  and  $M_A$  are crucial to raise the tree-level Higgs-boson mass as much as possible. In order to achieve a shift of  $\Delta M_h^2 \approx (85.5 \text{ GeV})^2$ , the top/stop effects (2.2) have to be very large, which typically requires  $m_{\tilde{t}} \gtrsim 1 \text{ TeV}$  (heavy stop spectrum) and/or  $|A_t| \gtrsim 2 \text{ TeV}$  (large stop mixing). Since (2.3) scales with the fourth power of  $\mu$ , the value of the higgsino mass parameter should not be too large. Finally, for  $\text{sgn}(A_t M_3)$ ,  $\text{sgn}(\mu M_3)$ , and  $\text{sgn}(\mu M_2)$  equal to +1, subleading negative corrections to  $M_h^2$  are minimised. We will see below that (some of) the mentioned MSSM parameters also play an important role in the production and the decay of the Higgs boson. This fact leads to interesting correlations.

## 2.2 Anatomy of Higgs-boson production and decay

An elegant way of obtaining the interactions of a light Higgs boson, is to construct an effective Lagrangian by integrating out heavy degrees of freedom. The resulting effective Higgs-boson couplings can be found most easily by utilising low-energy theorems, which relate amplitudes with different numbers of zero-momentum Higgs-boson fields [35, 36] (see [37, 38] for the original idea). Here we will apply this general framework to illustrate the main features of Higgs-boson production and decay in the MSSM. In order to present transparent formulas, we will again focus on the leading corrections in the decoupling limit [39].

In the SM, Higgs-boson production via gluon-gluon fusion receives its dominant contribution from triangle diagrams involving top quarks. In the limit of a light Higgs boson, in which we are interested in, the corresponding form factor can be replaced by its asymptotic value

$$F_{1/2}(\tau_t) \approx \lim_{\tau_i \rightarrow \infty} F_{1/2}(\tau_i) = 1, \quad (2.4)$$

where  $\tau_i = 4m_i^2/M_h^2$ . In the infinite mass limit, one has furthermore [19]

$$\lim_{\tau_i \rightarrow \infty} \frac{F_0(\tau_i)}{F_{1/2}(\tau_i)} = \frac{1}{4}. \quad (2.5)$$

with  $F_0(\tau_i)$  encoding the effects of scalar loops.

In the MSSM, the modification of the Higgs-boson production cross section in  $gg \rightarrow h$ , can be approximated by

$$R_h = \frac{\sigma(gg \rightarrow h)_{\text{MSSM}}}{\sigma(gg \rightarrow h)_{\text{SM}}} = (1 + \kappa_g)^2 \approx \left(1 + \sum_{i=\tilde{t}, \tilde{b}} \kappa_i\right)^2, \quad (2.6)$$

where  $\kappa_{\tilde{t}}$  and  $\kappa_{\tilde{b}}$  represents the effects of top-squark and bottom-squark triangles, respectively. Notice that (2.6) ignores the fact that the top-quark and bottom-quark Yukawa couplings in the MSSM differ from those in the SM. As will become clear later on, this mismatch is subleading in the  $M_Z^2/M_A^2$  expansion, and hence can be neglected for our purposes.

The power of the Higgs low-energy theorems arises from the fact that in the decoupling limit the corrections  $\kappa_{\tilde{t}, \tilde{b}}$  can be simply obtained by differentiating the mass-squared matrices  $\mathcal{M}_{\tilde{t}, \tilde{b}}^2$  with respect to the mass of the corresponding SM quark. For the top squarks, one has

$$\mathcal{M}_{\tilde{t}}^2 = \begin{pmatrix} \tilde{m}_{Q_3}^2 + m_t^2 + D_{Q_3} & m_t X_t \\ m_t X_t & \tilde{m}_{u_3}^2 + m_t^2 + D_{u_3} \end{pmatrix}, \quad (2.7)$$

where  $\tilde{m}_{Q_3, u_3}^2$  are soft SUSY-breaking masses and  $D_{Q_3, u_3} = \mathcal{O}(M_Z^2)$ . A similar expression holds in the case of the bottom-squark sector. Ignoring the contributions from the  $D$ -terms, which are numerically subleading, the master formula for the top-squark contribution to (2.6) reads

$$\kappa_{\tilde{t}} \approx \frac{1}{4} m_t^2 \frac{\partial}{\partial m_t^2} \ln [\det (\mathcal{M}_t^2)] \approx \frac{m_t^2}{4} \left( \frac{1}{m_{\tilde{t}_1}^2} + \frac{1}{m_{\tilde{t}_2}^2} - \frac{X_t^2}{m_{\tilde{t}_1}^2 m_{\tilde{t}_2}^2} \right), \quad (2.8)$$

where the multiplicative factor 1/4 in the first line stems from the normalisation (2.5) of the scalar form factor, and the final result agrees with the expression given in [40, 41]. From (2.8) one infers that the amount of mixing in the stop sector, parametrised by  $X_t$ , determines whether the ratio (2.6) is smaller or larger than 1. For no mixing, corresponding to  $X_t = 0$ , one has  $R_h \geq 1$ , so that Higgs-boson production in  $gg \rightarrow h$  is enhanced with respect to the SM. On the other hand, if  $X_t$  is parametrically larger than the mass eigenvalues  $m_{\tilde{t}_{1,2}}$  (with  $m_{\tilde{t}_1} \leq m_{\tilde{t}_2}$ ) of (2.7), then  $R_h \leq 1$ , meaning that the Higgs boson is less likely to be produced. The fact that in the MSSM, in order to make the Higgs boson sufficiently heavy, one needs large/maximal mixing, i.e.,  $|X_t| \approx \sqrt{6 m_{\tilde{t}_1} m_{\tilde{t}_2}}$ , then tells us that for a random MSSM parameter point that gives  $M_h \approx 125$  GeV one should find a suppression of  $\sigma(gg \rightarrow h)$ . In fact, this is precisely what happens. As a final remark, we add that the sign of the new-physics corrections to Higgs-boson production in gluon-gluon fusion is in many models closely related to the (non-)cancellation of the quadratic divergence in the Higgs-boson mass [42]. From (2.2) and (2.8), we see that in the MSSM there is a strong anti-correlation between  $M_h$  and  $R_h$ , driven by  $X_t$ .

The calculation of the sbottom contribution to  $R_h$  proceeds along the lines of (2.8). Since  $m_b^2 \ll m_{\tilde{t}}^2$ , notable effects can only arise if the mixing in the sbottom sector is very large. In this limit, one has approximately

$$\kappa_{\tilde{b}} \approx -\frac{m_b^2 X_b^2}{4m_{\tilde{b}_1}^2 m_{\tilde{b}_2}^2}, \quad (2.9)$$

where  $X_b = A_b - \mu t_\beta$ . Obviously, this correction is strictly destructive and can only be important if either the trilinear term  $A_b$  and/or the combination  $\mu t_\beta$  is sufficiently larger than the sbottom masses  $m_{\tilde{b}_{1,2}}$ .

In order to describe the decays of the Higgs boson, we define the corrections factors

$$\frac{\Gamma(h \rightarrow VV)_{\text{MSSM}}}{\Gamma(h \rightarrow VV)_{\text{SM}}} = (1 + \kappa_V)^2, \quad \frac{\Gamma(h \rightarrow f\bar{f})_{\text{MSSM}}}{\Gamma(h \rightarrow f\bar{f})_{\text{SM}}} = (1 + \kappa_f)^2, \quad (2.10)$$

for  $V = W, Z, \gamma$  and  $f = b, \tau, t$ .

With respect to (2.8), the derivation of the leading non-decoupling corrections to  $\kappa_{V,f}$  is complicated [35, 36, 41] by the fact that in the MSSM one has not a single, but two neutral scalar fields which develop a vacuum expectation value (VEV),

$$H_u = \frac{1}{\sqrt{2}} (v_u + c_\alpha h + s_\alpha H), \quad H_d = \frac{1}{\sqrt{2}} (v_d - s_\alpha h + c_\alpha H). \quad (2.11)$$

Here ( $-\pi/2 \leq \alpha \leq 0$ )

$$\alpha = \frac{1}{2} \arctan \left( t_{2\beta} \frac{M_A^2 + M_Z^2}{M_A^2 - M_Z^2} \right), \quad (2.12)$$

and  $h$  ( $H$ ) denotes the lighter (heavier) CP-even Higgs-boson mass eigenstate. Furthermore,  $v_u/v_d = t_\beta$  and  $\sqrt{v_u^2 + v_d^2} = v \approx 246$  GeV, so that  $v = v_u/s_\beta = v_d/c_\beta$ .

In the case of  $\kappa_W$ , which encodes the modification of the Higgs-boson coupling to a pair of  $W$  bosons, the presence of the mixing angle  $\alpha$  in (2.11) leads to

$$\kappa_W = -1 + \frac{v}{M_W} \left( c_\alpha \frac{\partial}{\partial v_u} - s_\alpha \frac{\partial}{\partial v_d} \right) M_W = -1 - s_{\alpha-\beta} \approx -\frac{M_Z^4}{8M_A^4} s_{4\beta}^2, \quad (2.13)$$

where we have used that  $M_W = g/2 \sqrt{v_u^2 + v_d^2}$  and in the last step expanded (2.12) in powers of  $M_Z^2/M_A^2$ , retaining only the first non-zero term in the Taylor series. An analogue formula applies to  $\kappa_Z$ , which implies that the Higgs-boson couplings to massive gauge-boson pairs are affected in a universal way,  $\kappa_V = \kappa_W = \kappa_Z$ . This universal correction (2.13) is strictly destructive, but of order  $M_Z^4/M_A^4$ , and thus numerically insignificant as long as one sticks to the decoupling limit. Since  $s_{4\beta}^2 \propto 1/t_\beta^2$ , it is further reduced in the large- $t_\beta$  limit.

In the case of the Higgs-boson couplings to tau leptons only the second term of the differential operator in (2.13) contributes because  $m_\tau = v_d/\sqrt{2} y_\tau$ . One obtains

$$\kappa_\tau = -1 - \frac{s_\alpha}{c_\beta} \approx -\frac{2M_Z^2}{M_A^2} s_\beta^2 c_{2\beta}. \quad (2.14)$$

The correction  $\kappa_t$  is obtained from (2.14) by the replacements  $-s_\alpha \rightarrow c_\alpha$ ,  $c_\beta \rightarrow s_\beta$ , and  $s_\beta^2 \rightarrow -c_\beta^2$ . Since  $m_t = v_u/\sqrt{2} y_t$  only the first term in the bracket of (2.13) results in a correction to  $\kappa_t$ . We see that the shifts in the tree-level couplings of the Higgs-boson to fermion pairs fall off quadratically in the limit  $M_A^2 \gg M_Z^2$ , and that  $\kappa_\tau \geq 0$  whereas  $\kappa_t \leq 0$ . In the large- $t_\beta$  limit  $\kappa_\tau \propto 1$  and  $\kappa_t \propto 1/t_\beta^2$ .

The coupling of the Higgs boson to bottom quarks receives important  $t_\beta$ -enhanced loop corrections involving charginos and gluinos [33, 43]. In the limit  $t_\beta \gg 1$ , we find including the leading terms

$$\kappa_b \approx \frac{1}{1 + \epsilon_b t_\beta} \frac{M_h^2 + (\Delta M_h^2)_t + M_Z^2}{M_A^2}, \quad (2.15)$$

where the expression for the tree-level Higgs-boson mass and the dominant one-loop correction are given in (2.1) and (2.2), respectively. Furthermore,

$$\epsilon_b = \frac{\mu A_t}{16\pi^2} \frac{y_t^2}{m_t^2} f(x_{t\mu}) + \frac{2\alpha_s}{3\pi} \frac{\mu M_3}{m_b^2} f(x_{b3}) \quad (2.16)$$

with  $x_{t\mu} = m_t^2/\mu^2$ ,  $x_{b3} = m_b^2/M_3^2$ , and

$$f(x) = -\frac{x}{1-x} - \frac{x}{(1-x)^2} \ln x. \quad (2.17)$$

Notice that  $f(x)$  is positive definite with  $f(0) = 0$ ,  $f(1) = 1/2$ , and  $f(\infty) = 1$ . This feature together with the appearance of the combinations  $\mu A_t$  and  $\mu M_3$  in (2.16) makes the correction  $\kappa_b$  introduced in (2.15) quite sensitive to the choice of MSSM parameters. While



the modifications  $\kappa_{b,t}$  have only a minor impact on Higgs-boson production, as already anticipated in (2.6), we will see below, that the decoupling corrections to  $\kappa_b$  can play an important role for the decays of a light Higgs boson.

In order to give an explicit result for  $\kappa_\gamma$ , we recall that within the SM, the process  $h \rightarrow \gamma\gamma$  is dominated by the virtual loop-exchange of  $W$  bosons. These contributions interfere destructively with the top-quark amplitude. One has

$$F_W = - \lim_{\tau_i \rightarrow \infty} \frac{F_1(\tau_W)}{F_{1/2}(\tau_i)} \approx 6.24, \quad (2.18)$$

where  $F_1(\tau_i)$  is the form factor associated with vector-boson loops [19] and the numerical result corresponds to our reference value  $M_h = 125$  GeV for the Higgs-boson mass. With the help of  $F_W$ , we write the modification of the Higgs-boson coupling to two photons as

$$\kappa_\gamma \approx \frac{1}{F_W - \frac{4}{3}} \left[ -\frac{4}{3} \kappa_{\tilde{t}} - \frac{1}{3} \kappa_{\tilde{b}} - \kappa_{\tilde{\tau}} + \kappa_{H^\pm} + \kappa_{\chi^\pm} \right], \quad (2.19)$$

where the stop and sbottom contributions, i.e.,  $\kappa_{\tilde{t}}$  and  $\kappa_{\tilde{b}}$ , have already been given in (2.8) and (2.9). Notice that compared to (2.6) they appear here with opposite signs, signalling that constructive interference in  $gg \rightarrow h$  goes along with destructive interference in  $h \rightarrow \gamma\gamma$  and *vice versa*. This correlation between the loop-induced effective  $hgg$  and  $h\gamma\gamma$  couplings is a general feature in new-physics models with coloured fermionic/scalar partners.

The diphoton channel also receives contributions from stau, charged Higgs-boson, and chargino loops. The stau correction takes the form

$$\kappa_{\tilde{\tau}} \approx -\frac{m_\tau^2 X_\tau^2}{4m_{\tilde{\tau}_1}^2 m_{\tilde{\tau}_2}^2}, \quad (2.20)$$

with  $X_\tau = A_\tau - \mu t_\beta$ . Like  $\kappa_{\tilde{b}}$  the correction (2.20) is only important if the stau-mixing parameter satisfies  $X_\tau \gg m_{\tilde{\tau}_{1,2}}$  and the lighter stau mass eigenstate is not too heavy. The former requirement demands both  $t_\beta$  and  $\mu$  to be large, and in this region of parameter space, stau loops necessarily lead to an enhancement of  $\Gamma(h \rightarrow \gamma\gamma)$ .

The charged Higgs-boson effects are, on the other hand, strictly destructive in the MSSM. In the decoupling limit, we find

$$\kappa_{H^\pm} \approx -\frac{1}{4} \left( M_W^2 - \frac{1}{2} M_Z^2 c_{2\beta}^2 \right) \frac{\partial}{\partial M_W^2} \ln(M_{H^\pm}^2) = -\frac{2M_W^2 - M_Z^2 c_{2\beta}^2}{8M_{H^\pm}^2}, \quad (2.21)$$

where  $M_{H^\pm}^2 = M_A^2 + M_W^2$ . Because the spin-zero amplitude  $F_0(\tau_i)$  is suppressed by a factor of 1/4 relative to  $F_{1/2}(\tau_i)$  (see (2.5)), and  $M_{H^\pm}^2 \approx M_A^2$  in the decoupling limit, the correction (2.21) has only a very minor effect on the diphoton decay. Note that  $c_{2\beta}^2 \rightarrow 1$  for  $t_\beta \rightarrow \infty$ .

The last ingredient in (2.19) is provided by triangle graphs with internal chargino exchange. In terms of the chargino mass matrix

$$\mathcal{M}_{\chi^\pm} = \begin{pmatrix} M_2 & \sqrt{2}M_W s_\beta \\ \sqrt{2}M_W c_\beta & \mu \end{pmatrix}, \quad (2.22)$$



the corresponding coefficient can be written as

$$\kappa_{\chi^\pm} \approx -M_W^2 \frac{\partial}{\partial M_W^2} \ln \left[ \det \left( \mathcal{M}_{\chi^\pm}^T \mathcal{M}_{\chi^\pm} \right) \right] \approx \text{sgn} \left[ \det \left( \mathcal{M}_{\chi^\pm} \right) \right] \frac{2M_W^2}{m_{\chi_1^\pm} m_{\chi_2^\pm}} s_{2\beta}. \quad (2.23)$$

Since for sufficiently large values of  $M_2$  and  $\mu$ , one has  $\det \left( \mathcal{M}_{\chi^\pm} \right) \approx \mu M_2$ , the overall sign of  $\kappa_{\chi^\pm}$  is determined by the one of the product of the higgsino and wino mass parameters. It follows that for  $\mu M_2 > 0$  ( $\mu M_2 < 0$ ), charginos enhance (suppress) the  $h \rightarrow \gamma\gamma$  rate. Since  $s_{2\beta} \propto 1/t_\beta$  the effects are largest for low  $t_\beta$ , and numerically very important if the chargino spectrum is light.

When converting the above results into branching ratios, one must bear in mind that the total decay rate  $\Gamma(h)$  of a light SM-like Higgs boson is dominated by its decay into bottom quarks. For  $M_h = 125$  GeV, one has  $\text{BR}(h \rightarrow b\bar{b}) \approx 60\%$ ,  $\text{BR}(h \rightarrow WW) \approx 21\%$ ,  $\text{BR}(h \rightarrow gg) \approx 7\%$ ,  $\text{BR}(h \rightarrow \tau^+\tau^-) \approx 6\%$ , and  $\text{BR}(h \rightarrow ZZ) \approx 3\%$ . It then follows from (2.10) that

$$R_\Gamma = \frac{\Gamma(h)_{\text{MSSM}}}{\Gamma(h)_{\text{SM}}} \approx 0.60 (1 + \kappa_b)^2 + 0.07 (1 + \kappa_g)^2 + 0.33. \quad (2.24)$$

Note that only the shift  $\kappa_b$  has been included here, while the tree-level corrections  $\kappa_\tau$  and  $\kappa_{W,Z}$  have been neglected. This is a very good approximation, since  $\text{BR}(h \rightarrow b\bar{b}) \gg \text{BR}(h \rightarrow \tau^+\tau^-)$  and (2.13) is relative to (2.15) suppressed by an additional power of  $M_Z^2/M_A^2$ .

At this point we are ready to work out the products of the production cross section times branching ratios for the various Higgs-boson decay channels. These are the key observables that will be affected by the different MSSM contributions. Defining

$$\begin{aligned} R_X &= \frac{[\sigma(pp \rightarrow h) \text{BR}(h \rightarrow X)]_{\text{MSSM}}}{[\sigma(pp \rightarrow h) \text{BR}(h \rightarrow X)]_{\text{SM}}} \\ &\approx \frac{1}{R_\Gamma} \prod_{i=g,X} (1 + \kappa_i)^2 \approx 1 + 1.86 \kappa_g - 1.20 \kappa_b + 2 \kappa_X, \end{aligned} \quad (2.25)$$

we find the following semi-analytic results for the most interesting final states  $X$  containing either massive vector bosons

$$R_V \approx 1 + 0.47 \left( \frac{m_t^2}{m_{t_1}^2} + \frac{m_t^2}{m_{t_2}^2} - \frac{m_t^2 X_t^2}{m_{t_1}^2 m_{t_2}^2} - \frac{m_b^2 X_b^2}{m_{b_1}^2 m_{b_2}^2} \right) - 1.20 \frac{1}{1 + \epsilon_b t_\beta} \frac{M_h^2 + (\Delta M_h^2)_t + M_Z^2}{M_A^2}, \quad (2.26)$$

where  $V = W, Z$  or diphotons

$$\begin{aligned} R_\gamma &\approx 1 + 0.33 \left( \frac{m_t^2}{m_{t_1}^2} + \frac{m_t^2}{m_{t_2}^2} - \frac{m_t^2 X_t^2}{m_{t_1}^2 m_{t_2}^2} \right) - 0.43 \frac{m_b^2 X_b^2}{m_{b_1}^2 m_{b_2}^2} + 0.10 \frac{m_\tau^2 X_\tau^2}{m_{\tau_1}^2 m_{\tau_2}^2} \\ &\quad + 1.63 \text{sgn}(\mu M_2) \frac{M_W^2}{m_{\chi_1^\pm} m_{\chi_2^\pm}} \frac{1}{t_\beta} - 1.20 \frac{1}{1 + \epsilon_b t_\beta} \frac{M_h^2 + (\Delta M_h^2)_t + M_Z^2}{M_A^2}. \end{aligned} \quad (2.27)$$

The result for the relative signal strength  $R_b$  of the  $b\bar{b}$  channel is obtained from (2.26) by simply replacing  $-1.20$  by  $0.80$ . In order to obtain the above expressions we have included all non-decoupling corrections, i.e., (2.8), (2.9), (2.20), and (2.23), but apart from (2.15) neglected all contributions that vanish in the limit  $M_A^2 \gg M_Z^2$ . We furthermore took the limit  $t_\beta \rightarrow \infty$ , keeping only the leading corrections, and for simplicity replaced  $\text{sgn}[\det(\mathcal{M}_{\chi^\pm})]$  by  $\text{sgn}(\mu M_2)$ . We also remark that measurements of the double ratio  $R_\gamma/R_{W,Z} \approx 1 + 2\kappa_\gamma$  would allow for a clean extraction of the  $h \rightarrow \gamma\gamma$  amplitude, since it is independent of  $\kappa_{\tau,b}$  (see [44] for a recent detailed study).

The formulas (2.26) and (2.27) are the main result of this section. They exhibit interesting correlations with the expressions presented in section 2.1. Focusing first on the correction  $(\Delta M_h^2)_{\bar{t}}$  introduced in (2.2), we see that in the limit of maximal stop mixing  $|X_t| \approx \sqrt{6 m_{\bar{t}_1} m_{\bar{t}_2}}$  (needed to lift the Higgs-boson mass to 125 GeV) the ratios  $R_{W,Z}$  and  $R_\gamma$  are necessarily reduced. In terms of  $m_{\bar{t}}^2 = m_{\bar{t}_1} m_{\bar{t}_2}$ , the shift in  $R_{W,Z}$  ( $R_\gamma$ ) is given approximately by  $-1.9 m_{\bar{t}}^2/m_t^2$  ( $-1.3 m_{\bar{t}}^2/m_t^2$ ), which amounts to a correction of around  $-5\%$  ( $-4\%$ ) for  $m_{\bar{t}} = 1$  TeV. Large mixing in the bottom-squark sector will further suppress the latter ratios. The decoupling corrections affecting the Higgs-boson couplings to the bottom and tau go in the same direction. Numerically, one finds a universal shift of  $-2\%$  for  $M_A = 1$  TeV. Positive corrections to  $R_\gamma$  can arise from chargino loops if  $\text{sgn}(\mu M_2) = +1$ , which, as mentioned below (2.3), helps also to diminish the negative correction  $(\Delta M_h^2)_{\bar{\tau}}$  to the Higgs-boson mass. Since (2.23) is  $t_\beta$ -suppressed, there is however a generic tension between large chargino effects in  $R_\gamma$  and saturating the upper limit on the tree-level Higgs-boson mass following from (2.1). A way to enhance  $R_\gamma$  without running into immediate problems at the tree level, is provided by a light stau with large mixing  $X_\tau \approx \mu t_\beta$ , which requires that both  $t_\beta$  and  $\mu$  are large. To give an example, employing  $m_{\bar{\tau}}^2 = m_{\bar{\tau}_1} m_{\bar{\tau}_2} = (200 \text{ GeV})^2$ ,  $t_\beta = 50$ , and  $\mu = 1$  TeV in (2.27), one finds that  $R_\gamma$  is changed by  $+50\%$ . Since the correction  $(\Delta M_h^2)_{\bar{b},\bar{\tau}}$  in (2.3) is proportional to  $-\mu^4/m_{\bar{b},\bar{\tau}}^2$ , one expects however an anti-correlation between the size of the stau contribution to  $R_\gamma$  and the loop-corrected Higgs-boson mass. As we will discuss in the next section, some of the MSSM corrections to low-energy observables are also changed significantly in the limit  $|\mu| \rightarrow \infty$ , which leads to further correlations, strengthening the constraints on the parameter space.

### 2.3 Anatomy of low-energy observables

The discussion in the previous two sections should have made clear that the part of the MSSM parameter space with  $M_A, t_\beta \rightarrow \infty$  represents a phenomenologically interesting region for Higgs-boson physics. In the following, we will extract the dominant MSSM corrections to  $B \rightarrow X_s \gamma$ ,  $B_s \rightarrow \mu^+ \mu^-$ , and  $(g-2)_\mu$  in this limiting case, highlighting the existing correlations with  $M_h$ ,  $R_b$ ,  $R_{W,Z}$ , and  $R_\gamma$ .

We start our discussion by considering the inclusive radiative  $B \rightarrow X_s \gamma$  decay. Taking into account only the most important corrections due to the Wilson coefficient  $C_7$  of the electromagnetic dipole operator leads to the following ratio [45–47]

$$R_{X_s} = \frac{\text{BR}(B \rightarrow X_s \gamma)_{\text{MSSM}}}{\text{BR}(B \rightarrow X_s \gamma)_{\text{SM}}} \approx 1 - 2.61 \Delta C_7 + 1.66 (\Delta C_7)^2, \quad (2.28)$$

where  $\Delta C_7$  represents the additive correction appearing in the high-scale Wilson coefficient  $C_7 = C_7^{\text{SM}} + \Delta C_7 \approx -0.19 + \Delta C_7$  [48].

Within the MSSM, the Wilson coefficient  $\Delta C_7$  receives important contributions from loops involving tops and charged Higgs bosons,  $\Delta C_7^{H^\pm}$ , as well as stops and charginos,  $\Delta C_7^{\chi^\pm}$ . In the decoupling limit with  $t_\beta \gg 1$ , the former corrections can be approximated by

$$\Delta C_7^{H^\pm} \approx \frac{m_t^2}{3M_{H^\pm}^2} \left( L_{tH^\pm} + \frac{3}{4} \right), \quad (2.29)$$

where  $L_{tH^\pm} = \ln(m_t^2/M_{H^\pm}^2)$  with  $M_{H^\pm}^2 \approx M_A^2$ . Subleading  $t_\beta$ -enhanced corrections dominated by gluinos [49, 50] have not been included here. Such effects enhance (suppress)  $\Delta C_7^{H^\pm}$  for negative (positive) values of  $\mu M_3$ , but are irrelevant for our considerations. For  $M_A = 1$  TeV one finds  $\Delta C_7^{H^\pm} \approx -0.03$ , where the minus sign reflects the well-known fact that in  $B \rightarrow X_s \gamma$  the charged Higgs-boson corrections interfere constructively with the SM amplitude [51, 52].

Since the charged Higgs-boson effects (2.29) are not  $t_\beta$  enhanced they render only an insignificant correction in the MSSM parameter region of interest. The dominant one-loop contributions to (2.28) are therefore provided by diagrams with up-type squarks and charginos. These grow linearly with  $t_\beta$  and take the form

$$\Delta C_7^{\chi^\pm} \approx -\mu A_t t_\beta \frac{m_t^2}{m_{\tilde{t}}^4} g(x_{t\mu}). \quad (2.30)$$

Here

$$g(x) = -\frac{7x^2 - 13x^3}{12(1-x)^3} - \frac{2x^2 - 2x^3 - 3x^4}{6(1-x)^4} \ln x. \quad (2.31)$$

Notice that we have included above only the correction due to top squarks and higgsino-like charginos, while the wino-like contribution has been suppressed. In the limit of large higgsino mass parameters, that we are mainly interested in, this is a good approximation, because the latter corrections scale as  $M_2/\mu M_W^2/m_{\tilde{t}}^2$  for  $|\mu| \gg M_2$ . The result (2.30) agrees with the expression given in [53]. Since the function  $g(x)$  is strictly positive for  $x \in ]0, \infty[$  with  $g(1) = 5/72 \approx 0.07$ , the sign in (2.30) implies that for  $\mu A_t > 0$  ( $\mu A_t < 0$ ) the branching ratio is larger (smaller) than the SM expectation [33, 54]. The dominant  $t_\beta$ -enhanced gluino corrections, not shown in (2.30), again enhance (suppress) the chargino contribution for  $\text{sgn}(\mu M_3) = -1$  (+1), but leave the qualitative dependence of  $\Delta C_7^{\chi^\pm}$  on  $\mu A_t$  unchanged [49, 50]. For the choices  $t_\beta = 50$ ,  $m_{\tilde{t}} = 1.5$  TeV,  $|\mu| = 1$  TeV, and  $|A_t| = 3$  TeV, one finds  $\Delta C_7^{\chi^\pm} \approx -\text{sgn}(\mu A_t) 0.12$ , which depending on the sign of  $\mu A_t$  corresponds to an enhancement/suppression of the ratio (2.28) by  $\mathcal{O}(30\%)$ . Shifts of this size in  $\text{BR}(B \rightarrow X_s \gamma)$  are detectable given the present theoretical calculations and experimental extractions.

After  $B \rightarrow X_s \gamma$ , we now analyse the structure of the MSSM contributions to another “standard candle” of quark flavour physics, namely  $B_s \rightarrow \mu^+ \mu^-$ . We begin by defining the ratio

$$R_{\mu^+ \mu^-} = \frac{\text{BR}(B_s \rightarrow \mu^+ \mu^-)_{\text{MSSM}}}{\text{BR}(B_s \rightarrow \mu^+ \mu^-)_{\text{SM}}} \approx 1 - 13.2 C_P + 43.6 (C_S^2 + C_P^2), \quad (2.32)$$

where  $C_S$  and  $C_P$  denote the dimensionless Wilson coefficients of the semileptonic scalar and pseudo-scalar operators. In the large- $t_\beta$  regime these coefficients have the most important impact on  $R_{\mu^+\mu^-}$ . The term linear in  $C_P$  arises from the interference with the SM contribution  $C_{10}^{\text{SM}} \approx -4.2$  [55, 56] to the Wilson coefficient of the semileptonic axial-vector operator. Importantly, for  $C_P > 0$  it interferes destructively with the term proportional to  $(C_S^2 + C_P^2)$ . This implies, on the one hand, that for positive values of  $C_P$  the stringent bounds on  $B_s \rightarrow \mu^+\mu^-$  are more easily evaded and, on the other hand, that a pseudo-scalar contribution of the correct size will lead to a suppression of the purely leptonic decay mode below its SM value.

Within the MSSM the contributions to  $C_S$  and  $C_P$  with the strongest  $t_\beta$  dependence arise from neutral Higgs double penguins [57]. In the decoupling limit, one has  $C_S \approx -C_P$  with

$$C_P \approx \mu A_t \frac{t_\beta^3}{(1 + \epsilon_b t_\beta)^2} \frac{m_t^2}{m_{\tilde{t}}^2} \frac{m_b m_\mu}{4s_W^2 M_W^2 M_A^2} f(x_{\tilde{t}\mu}). \quad (2.33)$$

Henceforth we use the shorthand notation  $s_W = \sin \theta_W$  etc. to indicate trigonometric functions of the weak mixing angle. Notice that our definition of the semileptonic scalar and pseudo-scalar Wilson coefficients differs from that of [58] by a factor of  $m_b$ . The parameter  $\epsilon_b$  introduced in (2.16), parametrises loop-induced non-holomorphic terms that receive their dominate contributions from higgsino and gluino exchange. The Wilson coefficients  $C_S$  and  $C_P$  also receive various other contributions in the MSSM [58, 59], but these are of no concern as long as one is interested in the general structure of the effects only. Recall that  $f(x) > 0$ , so that the sign of  $C_S$  ( $C_P$ ) is opposite to (follows) that of the combination  $\mu A_t$ . Notice finally that (2.16) introduced a dependence on  $\text{sgn}(\mu M_3)$  and that (2.33) is suppressed (enhanced) for  $\mu M_3 > 0$  ( $\mu M_3 < 0$ ).

From what has been said below (2.32), it should be clear, that the latter feature has important implications. In particular, it follows that finding  $\text{BR}(B_s \rightarrow \mu^+\mu^-)$  close to its SM value leads to a two-sided bound on the product  $\mu A_t$ , if double Higgs-penguin contributions provide the dominant new-physics effect in the purely leptonic decay. For example, consider  $R_{\mu^+\mu^-} < 1.3$ . Combining (2.32) and (2.33), translates into

$$-\frac{0.16}{\text{TeV}^2} \lesssim \frac{1}{(1 + \epsilon_b t_\beta)^2} \frac{\mu A_t}{m_{\tilde{t}}^2 M_A^2} \left(\frac{t_\beta}{50}\right)^3 \lesssim \frac{1.37}{\text{TeV}^2}. \quad (2.34)$$

For simplicity we have set  $x_{\tilde{t}\mu} = 1$  here, which corresponds to the case of degenerate masses. Clearly, this double inequality provides a non-trivial constraint on the MSSM parameter space with  $t_\beta \gg 1$ . Realise that the apparent asymmetry in (2.34) arises from the fact that  $C_P > 0$  is preferred over  $C_P < 0$ , because a small positive pseudo-scalar contribution leads to a cancellation between the linear and quadratic terms in (2.32), and that values  $1/(1 + \epsilon_b t_\beta)^2 \mu A_t / (m_{\tilde{t}}^2 M_A^2) (t_\beta/50)^3 \approx 0.6/\text{TeV}^2$  correspond to a reduction of  $\text{BR}(B_s \rightarrow \mu^+\mu^-)$  relative to the SM by about 50%.

We now turn our attention to the anomalous magnetic moment  $a_\mu = (g - 2)_\mu/2$  of the muon. In the MSSM, this observable receives one-loop contributions from Feynman diagrams with neutralino and smuon as well as chargino and sneutrino exchange (see [60, 61]

for topical reviews). The latter diagrams dominate in almost the entire parameter space [62] and can be approximated by

$$\Delta a_\mu^{\chi^\pm} \approx -\frac{G_F M_W^2}{\sqrt{2}\pi^2} \mu M_2 t_\beta \frac{m_\mu^2}{m_{\tilde{\nu}}^4} \frac{h(x_{\chi_1 \tilde{\nu}}) - h(x_{\chi_2 \tilde{\nu}})}{x_{\chi_1 \tilde{\nu}} - x_{\chi_2 \tilde{\nu}}}, \quad (2.35)$$

with  $x_{\chi_i \tilde{\nu}} = m_{\chi_i^\pm}^2 / m_{\tilde{\nu}}^2$  and

$$h(x) = \frac{x-3}{(1-x)^2} - \frac{2}{(1-x)^3} \ln x. \quad (2.36)$$

Since  $x_{\chi_1 \tilde{\nu}} \leq x_{\chi_2 \tilde{\nu}}$  by convention and  $h(x)$  is a monotonically decreasing function of  $x$  with  $h(1) = 2/3$  and  $h(\infty) = 0$ , it follows that the sign of (2.35) is determined by that of  $\mu M_2$ . Employing  $t_\beta = 50$ ,  $m_{\tilde{\nu}} = |\mu| = 1$  TeV,  $|M_2| = 300$  GeV,  $m_{\chi_1^\pm} \approx |M_2|$ , and  $m_{\chi_2^\pm} \approx |\mu|$ , one finds a shift  $\Delta a_\mu^{\chi^\pm} \approx \text{sgn}(\mu M_2) 2.2 \cdot 10^{-9}$ , which for  $\mu M_2 > 0$  removes almost entirely the well-known tension between the experimental result and the SM prediction for  $a_\mu$ .

The formulas (2.30), (2.33), and (2.35) provide a good starting point to discuss the correlations between the low-energy and Higgs-boson observables, which we expect to see below in our numerical analysis. Choosing, for definiteness,  $\text{sgn}(M_i) = +1$  with  $i = 1, 2, 3$ , we infer from sections 2.1 and 2.2 that the parameter region with large  $t_\beta$  and large and positive  $A_t$  and  $\mu$  is well suited, on the one hand, to explain the relative heaviness of the Higgs boson, and, on the other hand, to allow for a significant enhancement of the  $h \rightarrow \gamma\gamma$  signal. From (2.30) it follows that the above parameter choices inevitably lead to an enhancement of the branching ratio of  $B \rightarrow X_s \gamma$ . While the  $B_s \rightarrow \mu^+ \mu^-$  decay rate can in principle be both enhanced as well as reduced for  $\mu A_t > 0$ , we will see in the next section, that for  $\mu M_3 > 0$  one typically observes a suppression of the  $B_s \rightarrow \mu^+ \mu^-$  branching ratio whenever the diphoton signal is enhanced. Notice that the presence of the  $t_\beta$ -enhanced corrections  $\epsilon_b$  in (2.33) plays a crucial role in this context. In fact, from (2.34) it is evident that parameter choices that give  $\epsilon_b > 0$  are favoured over those that lead to  $\epsilon_b < 0$ . Finally, since  $\text{sgn}(\mu) = +1$  in the considered parameter region, one also expects a visible improvement in the description of the  $a_\mu$  data, if the sneutrinos are sufficiently light.

## 2.4 Anatomy of DM relic abundance

Another appealing feature of the special MSSM parameters under consideration, is the possibility to generate the correct DM relic density

$$\Omega_{\text{DM}} h^2 \approx \frac{1.07 \cdot 10^9}{\text{GeV}} \frac{x_f}{M_{\text{Pl}} \sqrt{g_*} \hat{\sigma}_{\text{eff}}}, \quad (2.37)$$

through stau coannihilation [63–66] with the lightest SUSY particle (LSP), represented by the lightest neutralino mass eigenstate. In the above equation,  $M_{\text{Pl}} \approx 1.22 \cdot 10^{19}$  GeV is the Planck mass,  $g_* \approx 81$  is the number of relativistic degrees of freedom at the freeze-out temperature  $T_f$ , and  $x_f = m_{\chi_1^0} / T_f \approx 22$  for the masses of the lightest neutralino we are interested in.

In the case at hand, the effective cross section

$$\hat{\sigma}_{\text{eff}} \approx \alpha_{\chi\chi} a_{\chi\chi} + \alpha_{\chi\tilde{\tau}} a_{\chi\tilde{\tau}} + \mathcal{O}(1/x_f), \quad (2.38)$$

entering (2.37) receives two important contributions. The first one arises from neutralino annihilation into tau pairs, induced by stau exchange in the  $t$  and  $u$  channel. For a mostly bino-like neutralino,  $m_{\chi_1^0} \approx |M_1|$ , and large mixing in the stau sector, we find the expression

$$a_{\chi\chi} \approx \frac{e^4}{32\pi c_W^4} \frac{1}{m_{\chi_1^0}^2} j(r_{\tilde{\tau}\chi}), \quad (2.39)$$

where  $r_{\tilde{\tau}\chi} = m_{\tilde{\tau}_1}/m_{\chi_1^0}$  and

$$j(r) = \frac{1}{(1+r^2)^2}. \quad (2.40)$$

In order to achieve a pronounced  $h \rightarrow \gamma\gamma$  signal, the stau has to be light and strongly coupled to the Higgs. It turns out that in this case the dominant coannihilation channel is  $\chi_1^0 \tilde{\tau}_1 \rightarrow h\tau$ , which proceeds through the  $t$ -channel exchange of the lighter stau state [4]. Its contribution to (2.38) is approximately given by

$$a_{\chi\tilde{\tau}} \approx \frac{5e^4}{1024\pi s_W^2 c_W^4} \frac{m_\tau^2 X_\tau^2}{M_Z^2 m_{\chi_1^0}^4} k(r_{\tilde{\tau}\chi}, r_{h\chi}), \quad (2.41)$$

with  $r_{h\chi} = m_h/m_{\chi_1^0}$  and

$$k(r_1, r_2) = \frac{(r_1 - r_2 + 1)^2 (r_1 + r_2 + 1)^2}{r_1 (r_1 + 1) (r_2^2 - r_1 (r_1 + 1))^2}. \quad (2.42)$$

The results (2.39) and (2.41) can be derived from the general expressions given in [66]. Notice that the coannihilation contribution  $a_{\chi\tilde{\tau}}$  is proportional to  $m_\tau^2 X_\tau^2$ . Like in (2.20) this factor arises from the  $\tilde{\tau}_1 \tilde{\tau}_1 h$  coupling.

The last missing ingredients needed to allow for a qualitative understanding of  $\Omega_{\text{DM}} h^2$ , are the Boltzmann weight factors  $\alpha_{\chi\chi}$  and  $\alpha_{\chi\tilde{\tau}}$  appearing in (2.38). In the parameter space that allows to reproduce the observed relic density, we obtain

$$\alpha_{\chi\chi} \approx 1, \quad \alpha_{\chi\tilde{\tau}} \approx \frac{1}{2} e^{20.7(1-r_{\tilde{\tau}\chi})}. \quad (2.43)$$

The expressions (2.43) show that the size of coannihilation is exponentially sensitive to the mass splitting  $m_{\tilde{\tau}_1} - m_{\chi_1^0}$ , meaning that the process  $\chi_1^0 \tilde{\tau}_1 \rightarrow h\tau$  only becomes important in regions of parameter space that permit values of  $r_{\tilde{\tau}\chi}$  close to 1.

Based on (2.37) to (2.43), we are now able to discuss the restrictions that the observed relic density  $\Omega_{\text{DM}} h^2 \approx 0.11$  imposes on the MSSM parameter space. For neutralino masses  $m_{\chi_1^0} \lesssim 100$  GeV, it turns out that  $\chi_1^0 \chi_1^0 \rightarrow \tau^+ \tau^-$  represents the dominant DM annihilation channel. In this case, one has  $\Omega_{\text{DM}} h^2 \approx (\Omega_{\text{DM}} h^2)_{\chi\chi}$  with

$$(\Omega_{\text{DM}} h^2)_{\chi\chi} \approx 1.4 \cdot 10^{-2} \left( \frac{m_{\chi_1^0}}{0.1 \text{ TeV}} \right)^2 (1 + r_{\tilde{\tau}\chi}^2)^2. \quad (2.44)$$

It follows that in order to achieve a large enough DM abundance one needs a sizeable mass splitting  $m_{\tilde{\tau}_1} - m_{\chi_1^0}$ . For example, for  $m_{\chi_1^0} \approx 30$  GeV masses of  $m_{\tilde{\tau}_1} \approx 90$  GeV result in viable  $\Omega_{\text{DM}} h^2$  values. Increasing the neutralino mass requires slightly larger splittings  $m_{\tilde{\tau}_1} - m_{\chi_1^0}$  that reach a maximum at  $m_{\chi_1^0} \approx 60$  GeV. At this point the mass difference starts decreasing, leading to  $m_{\tilde{\tau}_1} - m_{\chi_1^0} \approx 35$  GeV for  $m_{\chi_1^0} \approx 100$  GeV.

For somewhat heavier neutralinos  $m_{\chi_1^0} \gtrsim 100$  GeV the proper DM density requires mass differences  $m_{\tilde{\tau}_1} - m_{\chi_1^0}$  of order 20 GeV, and as a result (2.41) has to be included. In consequence,  $\Omega_{\text{DM}} h^2 \approx (\Omega_{\text{DM}} h^2)_{\chi\chi} + (\Omega_{\text{DM}} h^2)_{\tilde{\tau}\chi}$  with the latter contribution approximated by

$$(\Omega_{\text{DM}} h^2)_{\tilde{\tau}\chi} \approx -2.5 \left( \frac{X_\tau}{50 \text{ TeV}} \right)^2 e^{20.7(1-r_{\tilde{\tau}\chi})}. \quad (2.45)$$

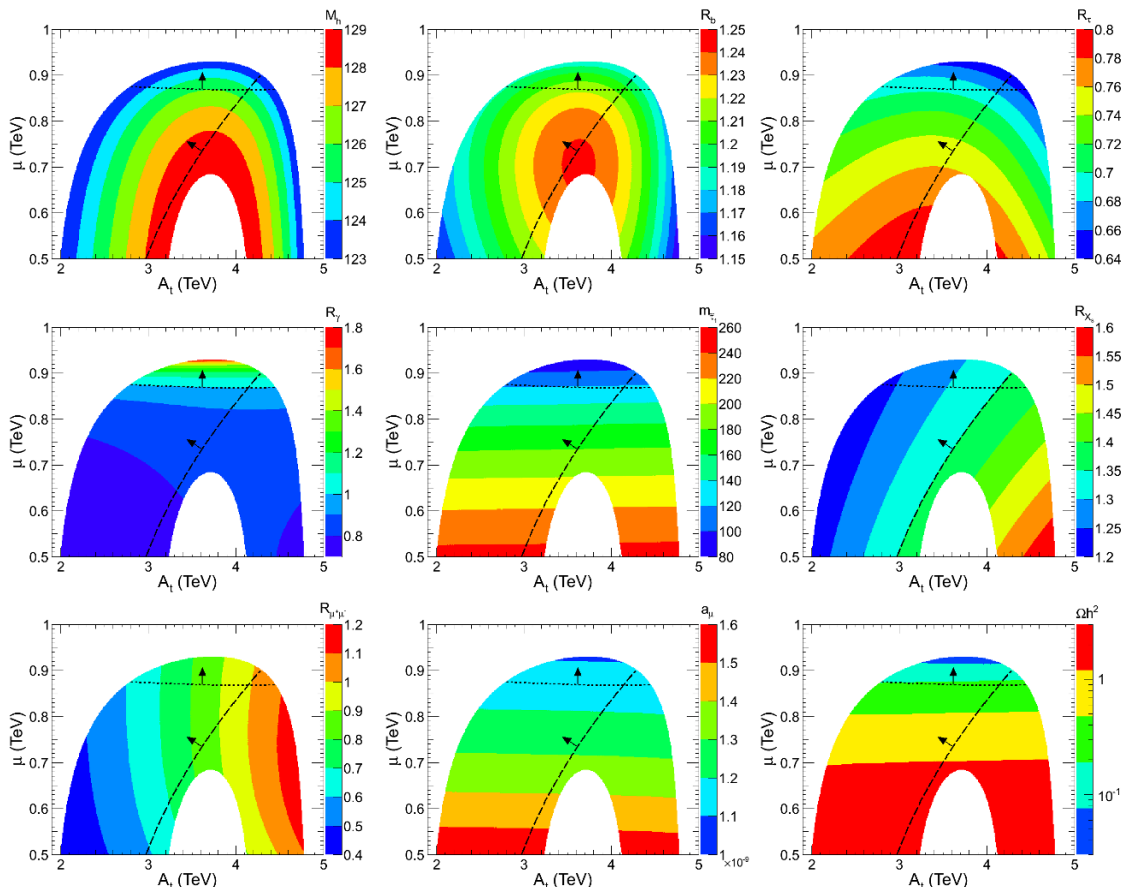
Notice that the exponential suppression of  $(\Omega_{\text{DM}} h^2)_{\tilde{\tau}\chi}$  by  $m_{\tilde{\tau}_1} - m_{\chi_1^0}$  is in the specific MSSM scenarios we consider balanced by the large mixing parameter  $X_\tau \approx \mu t_\beta$ .

### 3 Numerical analysis

We now turn to the numerical analysis of the Higgs-boson and the low-energy observables as well as the DM relic density. All results presented below have been obtained using SOFTSUSY 3.3.3 [67, 68] for the spectrum calculation, HIGLU 3.11 [69, 70] and HDECAY 4.45 [71, 72] for the computation of Higgs-boson production and decay, and SUPERISO RELIC 3.3 [73–76] for the calculation of the relevant low-energy observables and the DM abundance. We have compared our results against SUSPECT 2.41 [77, 78] and FEYN-HIGGS 2.8.6 [79, 80], and found good overall agreement between the different programs for most of the observables. The biggest numerical differences arise for the Higgs-boson mass and its branching ratios. In the former (latter) case we find relative changes of typically below 5% (10%). The observed differences can be traced back, on the one hand, to the use of different renormalisation prescriptions ( $\overline{\text{DR}}$  *vs.* on-shell scheme) and, on the other hand, to the different treatment of higher-order perturbative corrections. The quoted relative errors give an indication of the theoretical uncertainty plaguing our calculations of the Higgs-boson observables, and we will comment on its impact on our numerical analysis below. For a detailed comparisons between the publicly available programs dealing with the mass of the Higgs boson in the MSSM, we refer to [81].

To begin with, we focus on scenarios with  $t_\beta = 60$ . The other choices of the MSSM parameters are  $M_A = 1$  TeV,  $M_1 = 50$  GeV,  $M_2 = 300$  GeV,  $M_3 = 1.2$  TeV,  $\tilde{m}_{Q_3} = \tilde{m}_{u_3} = 1.5$  TeV,  $\tilde{m}_{L_3} = \tilde{m}_{l_3} = 350$  GeV, while we take common soft SUSY-breaking masses of 1.5 TeV and 2 TeV (1 TeV) for the remaining “left-handed” and “right-handed” squark (sleptons). We furthermore employ  $A_b = 2.5$  TeV and  $A_\tau = 500$  GeV, while the first and second generation trilinear couplings take the same values as those of the third generation, as they have essentially no impact on the observables in question. Hereafter we will refer to this specific choice of parameters as the “ $t_\beta = 60$  scenario”. In figure 1 we show the results of our numerical scans in the  $A_t - \mu$  plane. We restrict ourselves to the quadrant





**Figure 1.** Results for  $M_h$  (upper left),  $R_b$  (upper center),  $R_\tau$  (upper right),  $R_\gamma$  (center left),  $m_{\tilde{\tau}_1}$  (center),  $R_{X_s}$  (center right),  $R_{\mu^+\mu^-}$  (lower left),  $\Delta a_\mu$  (lower center), and  $\Omega_{\text{DM}} h^2$  (lower right) in the  $t_\beta = 60$  scenario. The Higgs-boson and lighter stau masses are given in units of GeV. The dotted black lines indicate the parameter regions with  $R_\gamma > 1$ , while the dashed black lines correspond to the 95% CL regions favoured by  $B \rightarrow X_s \gamma$ . See text for details.

with  $A_t > 0$  and  $\mu > 0$ , which shows the most interesting effects and correlations and is the only one that allows for a good description of all data.

From the prediction for the Higgs-boson mass, we see that for the above choice of SUSY parameters, the trilinear term  $A_t$  has to lie in the range of [2, 5] TeV in order to push  $M_h$  up to [123, 129] GeV. The latter range is allowed by the ATLAS and CMS data [1, 2], if one accounts for the parametric errors from the SM input (with the largest uncertainty arising from the top-quark mass,  $m_t^{\text{pole}} = (173.3 \pm 2.8)$  GeV [82]) as well as the theoretical uncertainties in the MSSM calculation of the mass of the Higgs boson [81]. Of course, the need for large trilinear stop-Higgs boson couplings is an immediate consequence of (2.1) and (2.2). The anti-correlation between the Higgs-boson mass and the  $\mu$  parameter, as implied by (2.3), is also clearly visible in the panel. We emphasise that the shown predictions correspond to  $\overline{\text{DR}}$  input parameters and that the results obtained in the on-shell scheme (as used for example in FEYNHIGGS) would differ to some extent. In particular, the values

for  $A_t$  needed to accommodate a Higgs-boson mass consistent with the LHC observations can be smaller by a factor of up to 2. This pronounced dependence on the renormalisation prescription should be kept in mind when interpreting our numerical results.

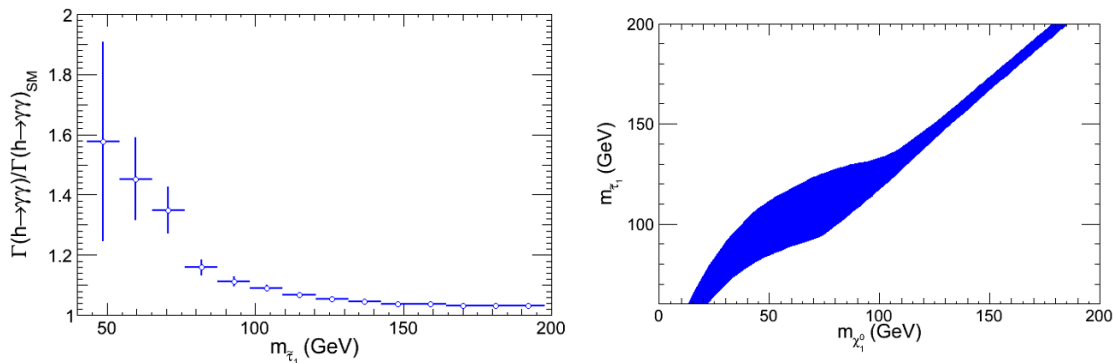
We now turn our attention to Higgs-boson production and decays. Since we are in (or close to) the maximal stop-mixing regime, we expect from (2.8) that the Higgs-boson production cross section should be suppressed with respect to the SM. In fact, we obtain  $R_h \approx 0.95$  (and stop masses  $m_{\tilde{t}_1} \approx 1.3 \text{ TeV}$  and  $m_{\tilde{t}_2} \approx 1.6 \text{ TeV}$ ) throughout the entire parameter space depicted in the panels. The deviations in the relative signal strength  $R_b$  of the Higgs-boson decay to bottom quarks are more pronounced than those in  $R_h$  and correspond to enhancements of roughly 20%. Notice that these shifts are due to the terms  $\epsilon_b$  and  $(\Delta M_h^2)_{\tilde{t}}$  in (2.15), the latter of which introduces a positive correlation between  $R_b$  and  $M_h$ . This feature clearly manifests itself in the two panels. As a consequence of the suppression of  $R_h$  and the enhancement of  $R_b$ , the Higgs-boson decays to  $W$ -,  $Z$ -boson, and tau pairs are all suppressed. For the considered MSSM parameters, we find  $R_{W,Z} \approx 0.7$  and  $R_\tau \approx [0.65, 0.80]$ . We add that  $R_\tau$  shows a noticeable dependence on the higgsino mass parameter that stems from chargino and neutralino effects in the tau Yukawa coupling. While the structure of these corrections is similar to those in (2.16), these contributions have, for simplicity, not been included in the approximate formula (2.14).

As anticipated after (2.20) and (2.27), the prediction for the diphoton signal  $R_\gamma$  depends very strongly on the amount of mixing  $X_\tau \approx \mu t_\beta$  in the stau sector. We observe that in the studied scenario, values of  $R_\gamma > 1$  can only be obtained in a narrow mass window around  $\mu \approx 900 \text{ GeV}$ . For our choice of soft SUSY-breaking masses  $\tilde{m}_{L_3} = \tilde{m}_{l_3} = 350 \text{ GeV}$ , such large  $\mu$  parameters lead to values of  $m_{\tilde{\tau}_1}$  that are close to the LEP bound of  $m_{\tilde{\tau}_1} > 81.9 \text{ GeV}$  [83]. To further illustrate the latter feature we display in the left panel of figure 2 the maximal value for the  $h \rightarrow \gamma\gamma$  decay width normalised to its SM value, that can be obtained for fixed  $m_{\tilde{\tau}_1}$ . In order to arrive at the plot we have used the results from a general 19 parameter scan in the phenomenological MSSM, as described in [84, 85]. The fast decoupling of the stau corrections in  $\Gamma(h \rightarrow \gamma\gamma)$  is evident from the figure.

We have seen that achieving a pronounced  $h \rightarrow \gamma\gamma$  signal requires the presence of a large  $\tilde{\tau}_1 \tilde{\tau}_1 h$  coupling. Such an interaction can be potentially problematic, since it may trigger additional minima in the scalar potential, and as a result the electroweak-breaking vacuum can become metastable [86–89]. A tree-level analysis of the stability of the vacuum, taking into account large left-right mixing in the stau sector, leads to the following constraint [87]

$$|\mu| t_\beta \lesssim 38.5 \left( \sqrt{\tilde{m}_{L_3}} + \sqrt{\tilde{m}_{l_3}} \right)^2 - 10 \text{ TeV}. \quad (3.1)$$

Although this result cannot be fully trusted as loop effects are very important in the specific MSSM scenarios considered in our work, it is clear from figure 1 that in the slice of parameter space that features significant enhancements of the diphoton signal, the bound (3.1) is violated by around 30%. In order to understand to which extent vacuum stability considerations exclude a light stau explanation of  $R_\gamma \approx 1.7$ , a full one-loop analysis of stau effects in the scalar potential would be required. Such a study is beyond the scope of this article.



**Figure 2.** Left: average  $h \rightarrow \gamma\gamma$  partial decay width normalised to its SM value as a function of the lighter stau mass. The shown vertical bars indicate the one standard deviations from the averaged values. Right: values of the lighter stau mass necessary to obtain the correct DM abundance as a function of the lightest neutralino mass. In the parameter space below (above) the blue region the predicted values of  $\Omega_{\text{DM}}h^2$  are below (above) the  $3.5\sigma$  WMAP bound.

We start the discussion of our numerical results for the low-energy observables with  $B \rightarrow X_s\gamma$ . Adding to the uncertainty of the SM prediction  $\text{BR}(B \rightarrow X_s\gamma)_{\text{SM}} = (3.08 \pm 0.24) \cdot 10^{-4}$  [45, 46, 73–75] an intrinsic MSSM error of 0.10 as well as the error of the experimental world average  $\text{BR}(B \rightarrow X_s\gamma)_{\text{exp}} = (3.43 \pm 0.22) \cdot 10^{-4}$  [90, 91], leads to the following 68% confidence level (CL) bound

$$R_{X_s} = 1.11 \pm 0.11, \tag{3.2}$$

where the individual uncertainties have been added in quadrature. At 95% CL one obtains instead  $R_{X_s} = [0.89, 1.33]$ . The border of this 95% probability region is indicated in the panels of figure 1 by the dashed black curves and arrows. From the panel showing  $R_{X_s}$ , one infers that for the depicted parameter choices,  $\text{BR}(B \rightarrow X_s\gamma)$  is always enhanced (by about 20% to 60%) with respect to the SM expectation. As expected from (2.30), the MSSM corrections grow with  $A_t$  and become too large for  $A_t \gtrsim 4.5 \text{ TeV}$  to allow for an agreement with  $\text{BR}(B \rightarrow X_s\gamma)$  at the 95% CL. This is an interesting and potentially important finding, since the parameter space disfavoured by  $B \rightarrow X_s\gamma$  partially overlaps with that preferred by other observations/measurements. In fact, we see from the figure that the  $B \rightarrow X_s\gamma$  constraint starts cutting into the already narrow regions in the  $A_t$ – $\mu$  plane with  $M_h \approx 125 \text{ GeV}$  and  $R_\gamma > 1$ .

A glimpse at the predictions for  $R_{\mu^+\mu^-}$  also shows that there is an intriguing correlation between  $\text{BR}(B_s \rightarrow \mu^+\mu^-)$  and  $\text{BR}(B \rightarrow X_s\gamma)$ . Notice first that the obtained branching fractions of  $B_s \rightarrow \mu^+\mu^-$  are all fully compatible with the bound

$$R_{\mu^+\mu^-} < 1.5, \tag{3.3}$$

which derives from the 95% CL exclusion  $\text{BR}(B_s \rightarrow \mu^+\mu^-)_{\text{exp}} < 4.2 \cdot 10^{-9}$  [92] and the untagged SM branching fraction  $\text{BR}(B_s \rightarrow \mu^+\mu^-)_{\text{SM}} = 3.9 \cdot 10^{-9}$  [73–75, 93, 94] (corresponding to a CP-averaged branching ratio of  $3.5 \cdot 10^{-9}$ ), after including a theoretical

68% CL error of 20% that is thought to cover both the SM and SUSY uncertainties. Second, we observe that essentially all solutions that satisfy  $B \rightarrow X_s \gamma$  feature a suppression of  $B_s \rightarrow \mu^+ \mu^-$ . In fact, asking for both an agreement with  $R_{X_s}$  at the 95% CL as well as an enhanced diphoton rate, implies  $R_{\mu^+ \mu^-} \approx [0.6, 1.0]$ . Notice that given the  $1/M_A^2$  dependence of (2.32) and (2.33) the ratio  $R_{\mu^+ \mu^-}$  is a very sensitive measure of the masses of the heavy Higgses. It follows that the deviations quoted above can be reduced by choosing  $M_A \gg 1$  TeV. An observation of the purely leptonic  $B_s$  decay at the SM level (which seems possible with 2012 LHC data), may hence give important insights both on the nature of the  $h \rightarrow \gamma\gamma$  excess in the context of the MSSM as well as the size of the decoupling scale  $M_A$ .

The last remaining low-energy observable in our study is the anomalous magnetic moment of the muon. Despite many changes and improvements in the recent history, the discrepancy seen in  $a_\mu$  seems to persist. Combining the experimental result [95] with the SM calculation, based on an update of the hadronic vacuum polarisation contributions [96] and the complete tenth-order QED corrections [97], results in

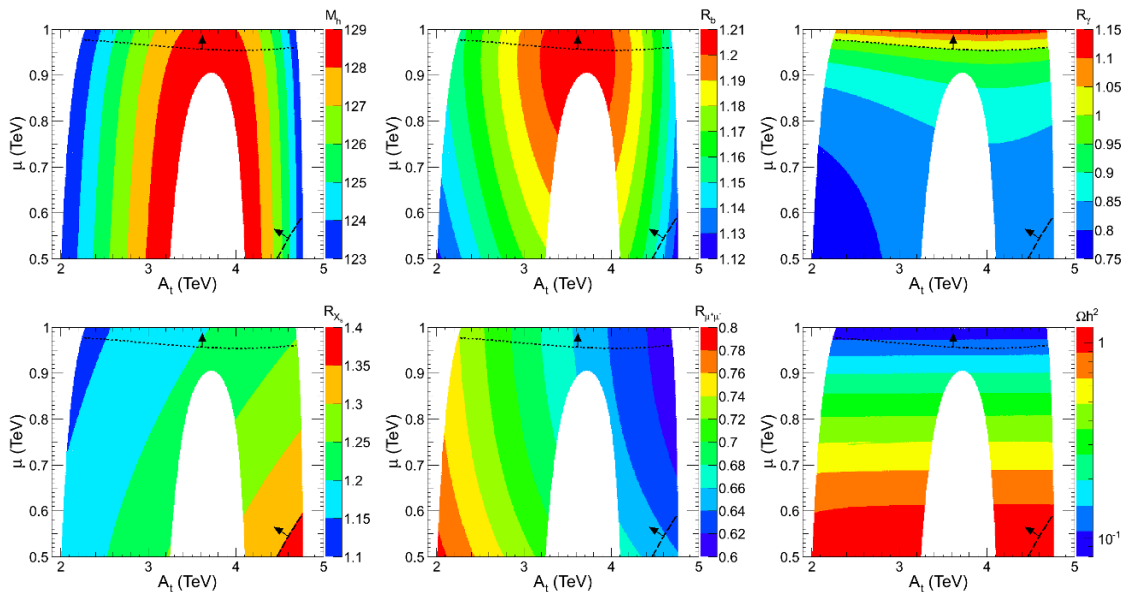
$$\Delta a_\mu = a_\mu^{\text{exp}} - a_\mu^{\text{SM}} = (2.5 \pm 0.9) \cdot 10^{-9}. \quad (3.4)$$

We see that for the sneutrino masses  $m_{\tilde{\nu}} \approx 1$  TeV present in our scenario, the predicted shifts in  $a_\mu$  amount to about  $[1.0, 1.6] \cdot 10^{-9}$ , which leads to a significant reduction of the above tension. The observed anti-correlation between  $\Delta a_\mu$  and  $\mu$  is readily understood from (2.35). For  $\mu, m_{\tilde{\nu}} \gg M_2$ , the chargino-sneutrino corrections to the muon anomalous magnetic moment scale as  $\Delta a_\mu^{\chi^\pm} \propto M_2/\mu M_W^2/m_{\tilde{\nu}}^2$ . This relation also implies that a notable improvement in (3.4) requires a relatively light slepton spectrum below a TeV, which in our scenario is present due to a suitable choice of parameters. The observed correlation between  $R_\gamma > 1$  and  $\Delta a_\mu = \mathcal{O}(10^{-9})$  should therefore not be regarded as a solid prediction in the entire MSSM parameter space. We add that if slepton mass universality is assumed [10], the correlation between  $R_\gamma$  and  $\Delta a_\mu$  becomes however quite robust.

Let us now switch gear again and finally examine the predictions for the DM relic abundance. We see that the obtained values for  $\Omega_{\text{DM}} h^2$  range over three orders of magnitude, but that agreement with the tight WMAP  $3.5\sigma$  bound [98]

$$\Omega_{\text{DM}} h^2 = [0.068, 0.155], \quad (3.5)$$

that includes theoretical uncertainties (see for example [99] and references therein), can be achieved. In fact, requiring only that the LSP does not overpopulate the universe, i.e.,  $\Omega_{\text{DM}} h^2 < 0.155$ , singles out a parameter region in the  $A_t - \mu$  plane that overlaps with that featuring  $R_\gamma > 1$ . The strong anti-correlation (positive correlation) between the  $\Omega_{\text{DM}} h^2$  and  $\mu$  ( $m_{\tilde{\tau}_1}$ ) is also clearly visible in the panels. It is easy to understand these two features by considering the pure annihilation contribution (2.44) to  $\Omega_{\text{DM}} h^2$  that effectively limits the size of the mass splitting  $m_{\tilde{\tau}_1} - m_{\chi_1^0}$ . Numerically, we find that for our choice  $M_1 = 50$  GeV  $\approx m_{\chi_1^0}$ , the requirement of an electrically neutral LSP with  $\Omega_{\text{DM}} h^2 < 0.155$  is only fulfilled if  $m_{\tilde{\tau}_1} \approx [80, 120]$  GeV. Since  $\tilde{m}_{L_3} = \tilde{m}_{l_3} = 350$  GeV, such relatively light staus can however only be obtained for large  $\mu$  parameters. The strong correlation between the mass of the LSP and the lighter stau is illustrated in the right panel of figure 2, which

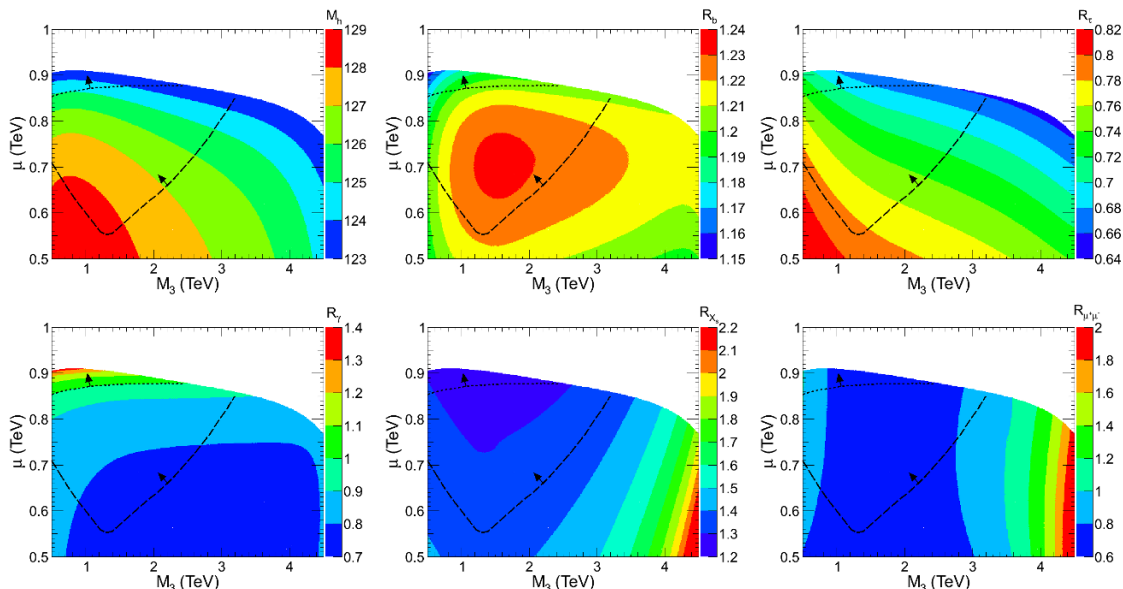


**Figure 3.** Predictions for  $M_h$  (upper left),  $R_b$  (upper center),  $R_\gamma$  (upper right),  $R_{X_s}$  (lower left),  $R_{\mu+\mu^-}$  (lower center), and  $\Omega_{\text{DM}} h^2$  (lower right) in the  $t_\beta = 30$  scenario. The mass of the Higgs boson is given in units of GeV. The dotted black lines indicate the parameter regions with  $R_\gamma > 1$ , while the dashed black lines correspond to the 95% CL regions favoured by  $B \rightarrow X_s \gamma$ . See text for further explanations.

displays the parameter region in the  $m_{\chi_1^0} - m_{\tilde{\tau}_1}$  plane that is consistent with (3.5). The shown predictions correspond to the  $t_\beta = 60$  scenario parameter choices with the value of  $M_1$  varied. From the figure it is clear that for a fixed value of  $m_{\tilde{\tau}_1}$  only a narrow range of  $m_{\chi_1^0}$  values is consistent with the WMAP bound. This in turn implies that in the light stau scenario a confirmation of the excess in  $pp \rightarrow h \rightarrow \gamma\gamma$  will have implication for direct and indirect DM searches, since the LSP mass is not a free parameter, but fixed to some degree.

The above discussion should have made clear that a confirmation of the results on the Higgs-boson couplings may point towards rather peculiar (and technically “unnatural”) MSSM parameters, namely large (and positive) values of  $t_\beta$ ,  $A_t$ , and  $\mu$ . These special parameter choices lead in turn to interesting and testable correlations between various observables. In the following, we would like to address the question of how robust these correlations are against the variations of some of other MSSM parameters that have been kept fixed so far.

We start our discussion by studying the impact of  $t_\beta$ . In what follows we employ  $t_\beta = 30$ ,  $\tilde{m}_{L_3} = 170 \text{ GeV}$ , and  $\tilde{m}_{l_3} = 350 \text{ GeV}$  (“ $t_\beta = 30$  scenario”). Notice that the change of the soft SUSY-breaking masses is required in order to obtain a very light  $\tilde{\tau}_1$  eigenstate, which in turn results in a notable shift in  $h \rightarrow \gamma\gamma$ . Furthermore, this choice of parameters satisfies the vacuum stability bound (3.1). The results of our numerical scans are collected in figure 3. Let us first consider the Higgs-boson mass as well as the  $h \rightarrow b\bar{b}$  and  $h \rightarrow \gamma\gamma$  decay signals. We see that while the general pattern of the predictions



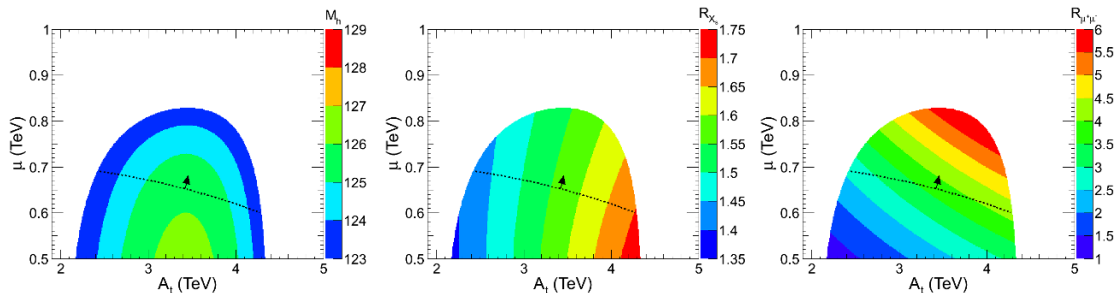
**Figure 4.** Predictions for  $M_h$  (upper left),  $R_b$  (upper center),  $R_\tau$  (upper right),  $R_\gamma$  (lower left),  $R_{X_s}$  (lower center), and  $R_{\mu^+\mu^-}$  (lower right) in the  $t_\beta = 60$  scenario for  $A_t = 3$  TeV. The mass of the Higgs boson is given in units of GeV. The dotted black lines indicate the parameter regions with  $R_\gamma > 1$ , while the dashed black lines correspond to the 95% CL regions favoured by  $B \rightarrow X_s \gamma$ . See text for further explanations.

resembles that obtained for  $t_\beta = 60$ , certain differences are clearly visible. First, now even values of  $\mu \gtrsim 1$  TeV lead to allowed Higgs-boson masses in the range  $[123, 129]$  GeV. This feature is related to the negative corrections (2.3) to the Higgs-boson mass that scale as  $(\Delta M_h^2)_{\tilde{b}, \tilde{\tau}} \propto t_\beta^4$ . Second, the enhancements in  $R_b$  are slightly smaller than those found for  $t_\beta = 60$ , but still amount to shifts in the ballpark of 20%. In turn,  $R_{W,Z}$  and  $R_\tau$  turn out to be somewhat larger than in the  $t_\beta = 60$  scenario. Third, the enhancements in  $R_\gamma$  are significantly smaller now and limited to 15%. This is expected since the stau corrections to the effective  $h \rightarrow \gamma\gamma$  vertex (2.20) scale like  $X_\tau^2 \propto t_\beta^2$ .

Turning to the predictions for  $B \rightarrow X_s \gamma$ ,  $B_s \rightarrow \mu^+ \mu^-$ , and  $\Omega_{\text{DM}} h^2$ , we first observe that in the  $t_\beta = 30$  scenario, SUSY effects still tend to enhance the rate of the inclusive radiative  $B$  decay, but that the corrections are about a factor of 2 smaller than before, i.e.,  $R_{X_s} \approx [1.1, 1.4]$ . Obviously, this is a result of the linear  $t_\beta$  scaling of the chargino corrections (2.30). From (2.35) it follows that the same kind of depletion is also present in  $\Delta a_\mu$ . In the case of  $B_s \rightarrow \mu^+ \mu^-$ , we find that in the parameter space favoured by  $B \rightarrow X_s \gamma$ , the branching ratio of the purely leptonic  $B_s$  decay is always suppressed with respect to the SM expectation. One has  $R_{\mu^+\mu^-} \approx [0.6, 0.8]$ . This feature can again be understood from the interplay of  $t_\beta$ -enhanced terms in (2.33). As in the case of  $t_\beta = 60$ , we finally see that acceptable values of the DM relic density can be achieved in the parts of the  $A_t$ - $\mu$  plane that also give  $R_\gamma > 1$ .

Another important SUSY parameter is the gluino mass  $M_3$ . In order to study its impact, we perform scans in the  $\mu$ - $M_3$  plane, fixing the value of the trilinear stop-Higgs





**Figure 5.** Predictions for  $M_h$  (left),  $R_{X_s}$  (center), and  $R_{\mu+\mu^-}$  (right) in the  $t_\beta = 60$  scenario, employing  $M_3 = -1.2$  TeV. The mass of the Higgs boson is given in units of GeV. The dotted black lines indicate the parameter regions with  $R_\gamma > 1$ . See text for additional details.

boson coupling to  $A_t = 3$  TeV and employing the parameters of the  $t_\beta = 60$  scenario discussed before. Our most important findings are illustrated in the panels of figure 4. In the case of the Higgs-boson mass we observe that for fixed  $\mu$  parameter the predictions for  $M_h$  reach a maximum for  $M_3 \approx 1$  TeV and then start decreasing for increasing gluino masses. This effect is associated to the one-loop gluino corrections (2.16) to the bottom Yukawa coupling that lead to a negative shift in  $M_h$  via (2.3). In fact, we infer from the predictions for  $R_\gamma$  that the most pronounced enhancement in this observable occur in a thin stripe with  $\mu \approx 900$  GeV and  $M_3 \approx [0.5, 1.5]$  TeV. Requiring  $M_h > 123$  GeV and  $R_\gamma > 1$  hence effectively sets an upper limit on the gluino mass. In the slice of the  $\mu$ - $M_3$  plane that leads to an enhanced  $h \rightarrow \gamma\gamma$  signal, we also see that the predictions for  $h \rightarrow b\bar{b}$ ,  $h \rightarrow \tau^+\tau^-$ ,  $R_{X_s}$ , and  $R_{\mu+\mu^-}$  vary only moderately with  $M_3$ . Numerically, we find that  $R_b \approx [1.15, 1.21]$ ,  $R_\tau \approx [0.66, 0.76]$ ,  $R_{X_s} \approx [1.2, 1.3]$ , and  $R_{\mu+\mu^-} \approx [0.6, 1.0]$ . Notice that  $R_b$  increases with  $M_3$ , while  $R_\tau$  and  $R_{\mu+\mu^-}$  both decrease with increasing gluino mass. These behaviours can be traced back to the  $t_\beta$ -enhanced gluino corrections entering (2.16). The observables not explicitly displayed in the figure show either essentially no ( $R_h$ ,  $\Delta a_\mu$ , and  $\Omega_{\text{DM}} h^2$ ) or only a minor dependence ( $R_{W,Z}$ ) on the gluino mass.

So far we have restricted ourselves to the case of a positive gluino mass term  $M_3$ . In order to see whether this sign choice has some impact on the obtained results, we repeat our numerical scans in the  $t_\beta = 60$  scenario, using  $M_3 = -1.2$  TeV instead of  $M_3 = 1.2$  TeV. The corresponding plots can be found in figure 5. From the predictions for  $M_h$ , we see that for  $M_3 < 0$ , Higgs-boson masses above 127 GeV cannot be achieved. This feature is related to the fact that for  $\mu M_3 < 0$  the tree-level bottom and tau Yukawa couplings are enhanced with respect to the case of  $\mu M_3 > 0$ , which leads to larger negative corrections (2.3) to  $M_h$ . We add that the Higgs-boson decays to massive gauge bosons and fermions all remain essentially SM-like in the studied scenario, while  $R_\gamma$  can be enhanced by up to 35%. For what concerns the  $B$ -physics observables, we observe that flipping the sign of  $M_3$  while leaving the remaining MSSM parameters untouched, enhances both  $\text{BR}(B \rightarrow X_s \gamma)$  and  $\text{BR}(B_s \rightarrow \mu^+ \mu^-)$ . Notice that these enhancements originate from the  $t_\beta$ -enhanced gluino corrections appearing in (2.16). While in the case of  $B \rightarrow X_s \gamma$  the predicted values of the



branching ratio are larger by around a factor of 1.1, we find that the branching fraction of  $B_s \rightarrow \mu^+ \mu^-$  is increased by factors 2.5 to 5. Given the stringent bounds (3.2) and (3.3), scenarios with  $M_3 < 0$  and large  $t_\beta$ ,  $A_t > 0$ , and  $\mu > 0$  are hence disfavoured. The remaining observables do not significantly depend on the sign chosen for  $M_3$ , and we hence do not show the corresponding predictions in the figure.

From the above explorations in the MSSM parameter space, we conclude that many of the found correlations are robust, as long as one restricts oneself to the region with  $t_\beta \gtrsim 50$ , large and positive  $A_t$  and  $\mu$ ,  $M_h \approx 125$  GeV, and an enhanced  $h \rightarrow \gamma\gamma$  rate. Positive values of  $M_3$  are also clearly favoured over negative gluino mass parameters.

Let us finally add that a strong enhancement of  $R_\gamma$  can also be achieved by suppressing the partial decay rate of the Higgs boson to bottom pairs. While this can be easily achieved in the MSSM, a suppression of  $R_b$  leads typically to enhanced  $h \rightarrow WW, ZZ$  rates. Given that the ratios  $R_{W,Z}$  appear to be SM-like [1, 2] an explanation of  $R_\gamma \approx 1.7$  via a suppressed  $h \rightarrow b\bar{b}$  width is (at present) not favoured by experiment.

## 4 Conclusions

The announcements of the discovery of a bosonic state by the LHC high- $p_T$  experiments mark the beginning of a new section in particle physics. While the significance of the various measurements is not yet sufficient to tell if the properties of the observed particle agree with that of the SM Higgs scalar, the preliminary findings of an enhanced  $h \rightarrow \gamma\gamma$  rate have triggered a lot of excitement, in particular, in the theoretical community. With ATLAS and CMS accumulating more data, the question of whether new physics or just a statistical fluctuation is responsible for the observed deviation, may be answered by the end of this year.

In this article we have studied in detail under which circumstances MSSM scenarios with a light stau can give rise to a significant enhancement of the diphoton signal without violating other existing constraints from  $B$  physics,  $(g-2)_\mu$ , and dark matter. We found that the observation of a Higgs-like state with a mass of around 125 GeV combined with the preliminary measurements of the Higgs-boson couplings points towards a distinct (but unnatural) choice of parameters, namely large values of  $\tan\beta$ ,  $M_A$ ,  $A_t$ , and  $\mu$  with  $\text{sgn}(A_t) = \text{sgn}(\mu) = +1$ . In this region of parameter space the correct thermal relic density can be achieved, but only if one assumes the hierarchy  $|M_1| \ll |M_2| \ll |\mu|$ . A typical MSSM spectrum leading to a significantly enhanced  $h \rightarrow \gamma\gamma$  rate as well as the correct value of  $\Omega_{\text{DM}} h^2$ , therefore contains a light bino as the dark matter candidate, a light and maximally mixed stau (often causing the vacuum to become metastable), and a heavy higgsino. We also showed that spectra where the gluino is much heavier than the squarks can be problematic, since in such a case  $|\mu|$  and in turn the enhancements in  $h \rightarrow \gamma\gamma$  are bounded from above.

In the corner of phase space singled out by the Higgs-boson mass, the diphoton rate, and the relic density, we found that the predictions for the remaining Higgs-boson observables are relatively robust against variations of the other MSSM parameters. In fact, intriguing patterns of deviations surface. While Higgs-boson production is typically slightly suppressed with respect to the SM, the  $h \rightarrow b\bar{b}$  rate is generically enhanced by around 20%, which in turn results in suppressions of the decays to  $W$ -boson,  $Z$ -boson, and tau pairs by

a comparable amount. Such shifts are in good agreement with the tentative findings by the LHC and Tevatron collaborations on the search for the SM Higgs scalar.

A further consequence of the large and positive values of  $\tan\beta$ ,  $M_A$ ,  $A_t$ , and  $\mu$  are  $B \rightarrow X_s\gamma$  branching fractions that are above the SM expectation by about 30%. In view of the ongoing effort to improve the theoretical understanding of the inclusive radiative  $B$  decay, deviations of such an amount may provide a smoking gun signal of the light stau scenario in the future. Let us add that in contrast to  $B \rightarrow X_s\gamma$ , the predictions for  $B \rightarrow X_sl^+l^-$ ,  $B \rightarrow K^*l^+l^-$ , and  $B \rightarrow \tau\nu$  all turn out to be SM-like and well in agreement with experimental results. Similarly, the values of the  $B \rightarrow D^{(*)}\tau\nu$  branching ratios are very close to the SM expectations. The anomalies seen in the latter channels [100] can hence not be accommodated in the light stau scenarios (nor in the full MSSM). We also observe that in the region of parameter space favoured by  $B \rightarrow X_s\gamma$  the rate of  $B_s \rightarrow \mu^+\mu^-$  tends to be smaller than the SM prediction. The sign of the gluino mass parameter plays a crucial role in obtaining viable predictions for the observables in the  $B$ -meson sector and we found that positive values of  $M_3$  are clearly favoured over parameter choices with  $M_3 < 0$ . Since the corrections in  $B_s \rightarrow \mu^+\mu^-$  can reach up to 40% (for not too large values of  $M_A$ ), precision measurements of the purely leptonic  $B_s$  decay, now under way at ATLAS, CMS, and LHCb, might shed further light on whether the observed enhancement in  $h \rightarrow \gamma\gamma$  is due to a light stau. We finally showed that under the assumption of light soft-SUSY breaking slepton masses, the long-standing discrepancy in  $(g-2)_\mu$  is significantly reduced in the parameter region selected by the Higgs-boson mass and the enhanced diphoton signal.

The choice of the scenarios studied in this paper allowed us to identify the correlations which would have been otherwise difficult to highlight in a general MSSM scan. These correlations might become very useful in case the ATLAS and CMS experiments continue to measure a notable enhancement of  $h \rightarrow \gamma\gamma$  and/or start to see the first supersymmetric partners.

## Acknowledgments

We are grateful to Ben Allanach, Thomas Hahn, Sven Heinemeyer, Sabine Kraml, and Michael Spira for useful discussions and correspondence. FM would like to thank Alexandre Arbey and Marco Battaglia for useful discussions and comments on the manuscript. UH would like to thank Babis Anastasiou for an invitation to “The Zurich Phenomenology Workshop, Higgs Search Confronts Theory”, which triggered the present work. He also acknowledges travel support from the UNILHC network (PITN-GA-2009-237920). FM acknowledges partial support from the European Union FP7 ITN INVISIBLES (Marie Curie Actions, PITN-GA-2011-289442).

**Open Access.** This article is distributed under the terms of the Creative Commons Attribution License which permits any use, distribution and reproduction in any medium, provided the original author(s) and source are credited.

## References

- [1] ATLAS collaboration, *Observation of a new particle in the search for the Standard Model Higgs boson with the ATLAS detector at the LHC*, *Phys. Lett. B* **716** (2012) 1 [[arXiv:1207.7214](#)] [[INSPIRE](#)].
- [2] CMS collaboration, *Observation of a new boson at a mass of 125 GeV with the CMS experiment at the LHC*, *Phys. Lett. B* **716** (2012) 30 [[arXiv:1207.7235](#)] [[INSPIRE](#)].
- [3] M. Carena, S. Gori, N.R. Shah and C.E. Wagner, *A 125 GeV SM-like Higgs in the MSSM and the  $\gamma\gamma$  rate*, *JHEP* **03** (2012) 014 [[arXiv:1112.3336](#)] [[INSPIRE](#)].
- [4] M. Carena, S. Gori, N.R. Shah, C.E. Wagner and L.-T. Wang, *Light stau phenomenology and the Higgs  $\gamma\gamma$  rate*, *JHEP* **07** (2012) 175 [[arXiv:1205.5842](#)] [[INSPIRE](#)].
- [5] M. Carena, I. Low and C.E. Wagner, *Implications of a modified Higgs to diphoton decay width*, *JHEP* **08** (2012) 060 [[arXiv:1206.1082](#)] [[INSPIRE](#)].
- [6] J. Ke, M.-X. Luo, L.-Y. Shan, K. Wang and L. Wang, *Searching SUSY leptonic partner at the CERN LHC*, [arXiv:1207.0990](#) [[INSPIRE](#)].
- [7] A. Joglekar, P. Schwaller and C.E. Wagner, *Dark matter and enhanced Higgs to di-photon rate from vector-like leptons*, *JHEP* **12** (2012) 064 [[arXiv:1207.4235](#)] [[INSPIRE](#)].
- [8] N. Arkani-Hamed, K. Blum, R.T. D’Agnolo and J. Fan, *2 : 1 for naturalness at the LHC?*, [arXiv:1207.4482](#) [[INSPIRE](#)].
- [9] L.G. Almeida, E. Bertuzzo, P.A. Machado and R.Z. Funchal, *Does  $H \rightarrow \gamma\gamma$  taste like vanilla new physics?*, *JHEP* **11** (2012) 085 [[arXiv:1207.5254](#)] [[INSPIRE](#)].
- [10] G.F. Giudice, P. Paradisi, A. Strumia and A. Strumia, *Correlation between the Higgs decay rate to two photons and the muon  $g-2$* , *JHEP* **10** (2012) 186 [[arXiv:1207.6393](#)] [[INSPIRE](#)].
- [11] J. Kearney, A. Pierce and N. Weiner, *Vectorlike fermions and Higgs couplings*, *Phys. Rev. D* **86** (2012) 113005 [[arXiv:1207.7062](#)] [[INSPIRE](#)].
- [12] M.A. Ajaib, I. Gogoladze and Q. Shafi, *Higgs boson production and decay: effects from light third generation and vectorlike matter*, *Phys. Rev. D* **86** (2012) 095028 [[arXiv:1207.7068](#)] [[INSPIRE](#)].
- [13] K.J. Bae, T.H. Jung and H.D. Kim, *125 GeV Higgs as a pseudo-Goldstone boson in supersymmetry with vector-like matters*, [arXiv:1208.3748](#) [[INSPIRE](#)].
- [14] M. Voloshin, *CP violation in Higgs diphoton decay in models with vectorlike heavy fermions*, *Phys. Rev. D* **86** (2012) 093016 [[arXiv:1208.4303](#)] [[INSPIRE](#)].
- [15] D. McKeen, M. Pospelov and A. Ritz, *Modified Higgs branching ratios versus CP and lepton flavor violation*, *Phys. Rev. D* **86** (2012) 113004 [[arXiv:1208.4597](#)] [[INSPIRE](#)].
- [16] A. Arbey, M. Battaglia, A. Djouadi and F. Mahmoudi, *The Higgs sector of the phenomenological MSSM in the light of the Higgs boson discovery*, *JHEP* **09** (2012) 107 [[arXiv:1207.1348](#)] [[INSPIRE](#)].
- [17] CDF collaboration, T. Aaltonen et al., *Combined search for the standard model Higgs boson decaying to a  $bb$  pair using the full CDF data set*, *Phys. Rev. Lett.* **109** (2012) 111802 [[arXiv:1207.1707](#)] [[INSPIRE](#)].

- [18] DØ collaboration, V.M. Abazov et al., *Combined search for the Standard Model Higgs boson decaying to  $b\bar{b}$  using the DØ run II data set*, *Phys. Rev. Lett.* **109** (2012) 121802 [[arXiv:1207.6631](#)] [[INSPIRE](#)].
- [19] A. Djouadi, *The anatomy of electro-weak symmetry breaking. II. The Higgs bosons in the minimal supersymmetric model*, *Phys. Rept.* **459** (2008) 1 [[hep-ph/0503173](#)] [[INSPIRE](#)].
- [20] LEP WORKING GROUP FOR HIGGS BOSON SEARCHES, ALEPH, DELPHI, L3 and OPAL collaborations, R. Barate et al., *Search for the Standard Model Higgs boson at LEP*, *Phys. Lett. B* **565** (2003) 61 [[hep-ex/0306033](#)] [[INSPIRE](#)].
- [21] Y. Okada, M. Yamaguchi and T. Yanagida, *Upper bound of the lightest Higgs boson mass in the minimal supersymmetric Standard Model*, *Prog. Theor. Phys.* **85** (1991) 1 [[INSPIRE](#)].
- [22] J.R. Ellis, G. Ridolfi and F. Zwirner, *Radiative corrections to the masses of supersymmetric Higgs bosons*, *Phys. Lett. B* **257** (1991) 83 [[INSPIRE](#)].
- [23] H.E. Haber and R. Hempfling, *Can the mass of the lightest Higgs boson of the minimal supersymmetric model be larger than  $m_Z$ ?*, *Phys. Rev. Lett.* **66** (1991) 1815 [[INSPIRE](#)].
- [24] J. Casas, J. Espinosa, M. Quirós and A. Riotto, *The lightest Higgs boson mass in the minimal supersymmetric Standard Model*, *Nucl. Phys. B* **436** (1995) 3 [*Erratum ibid.* **B 439** (1995) 466] [[hep-ph/9407389](#)] [[INSPIRE](#)].
- [25] A. Dabelstein, *The one loop renormalization of the MSSM Higgs sector and its application to the neutral scalar Higgs masses*, *Z. Phys. C* **67** (1995) 495 [[hep-ph/9409375](#)] [[INSPIRE](#)].
- [26] M.S. Carena, J. Espinosa, M. Quirós and C. Wagner, *Analytical expressions for radiatively corrected Higgs masses and couplings in the MSSM*, *Phys. Lett. B* **355** (1995) 209 [[hep-ph/9504316](#)] [[INSPIRE](#)].
- [27] M.S. Carena, M. Quirós and C. Wagner, *Effective potential methods and the Higgs mass spectrum in the MSSM*, *Nucl. Phys. B* **461** (1996) 407 [[hep-ph/9508343](#)] [[INSPIRE](#)].
- [28] H.E. Haber, R. Hempfling and A.H. Hoang, *Approximating the radiatively corrected Higgs mass in the minimal supersymmetric model*, *Z. Phys. C* **75** (1997) 539 [[hep-ph/9609331](#)] [[INSPIRE](#)].
- [29] S. Heinemeyer, W. Hollik and G. Weiglein, *The mass of the lightest MSSM Higgs boson: a compact analytical expression at the two loop level*, *Phys. Lett. B* **455** (1999) 179 [[hep-ph/9903404](#)] [[INSPIRE](#)].
- [30] M.S. Carena et al., *Reconciling the two loop diagrammatic and effective field theory computations of the mass of the lightest CP-even Higgs boson in the MSSM*, *Nucl. Phys. B* **580** (2000) 29 [[hep-ph/0001002](#)] [[INSPIRE](#)].
- [31] R. Hempfling, *Yukawa coupling unification with supersymmetric threshold corrections*, *Phys. Rev. D* **49** (1994) 6168 [[INSPIRE](#)].
- [32] L.J. Hall, R. Rattazzi and U. Sarid, *The top quark mass in supersymmetric SO(10) unification*, *Phys. Rev. D* **50** (1994) 7048 [[hep-ph/9306309](#)] [[INSPIRE](#)].
- [33] M.S. Carena, M. Olechowski, S. Pokorski and C. Wagner, *Electroweak symmetry breaking and bottom-top Yukawa unification*, *Nucl. Phys. B* **426** (1994) 269 [[hep-ph/9402253](#)] [[INSPIRE](#)].

- [34] D.M. Pierce, J.A. Bagger, K.T. Matchev and R.-J. Zhang, *Precision corrections in the minimal supersymmetric Standard Model*, *Nucl. Phys. B* **491** (1997) 3 [[hep-ph/9606211](#)] [[INSPIRE](#)].
- [35] M. Spira, A. Djouadi, D. Graudenz and P. Zerwas, *Higgs boson production at the LHC*, *Nucl. Phys. B* **453** (1995) 17 [[hep-ph/9504378](#)] [[INSPIRE](#)].
- [36] B.A. Kniehl and M. Spira, *Low-energy theorems in Higgs physics*, *Z. Phys. C* **69** (1995) 77 [[hep-ph/9505225](#)] [[INSPIRE](#)].
- [37] J.R. Ellis, M.K. Gaillard and D.V. Nanopoulos, *A phenomenological profile of the Higgs boson*, *Nucl. Phys. B* **106** (1976) 292 [[INSPIRE](#)].
- [38] M.A. Shifman, A. Vainshtein, M. Voloshin and V.I. Zakharov, *Low-energy theorems for Higgs boson couplings to photons*, *Sov. J. Nucl. Phys.* **30** (1979) 711 [*Yad. Fiz.* **30** (1979) 1368] [[INSPIRE](#)].
- [39] A. Djouadi, V. Driesen, W. Hollik and J.I. Illana, *The coupling of the lightest SUSY Higgs boson to two photons in the decoupling regime*, *Eur. Phys. J. C* **1** (1998) 149 [[hep-ph/9612362](#)] [[INSPIRE](#)].
- [40] R. Dermisek and I. Low, *Probing the stop sector and the sanity of the MSSM with the Higgs boson at the LHC*, *Phys. Rev. D* **77** (2008) 035012 [[hep-ph/0701235](#)] [[INSPIRE](#)].
- [41] G. Cacciapaglia, A. Deandrea and J. Llodra-Perez, *Higgs  $\rightarrow \gamma\gamma$  beyond the Standard Model*, *JHEP* **06** (2009) 054 [[arXiv:0901.0927](#)] [[INSPIRE](#)].
- [42] I. Low, R. Rattazzi and A. Vichi, *Theoretical constraints on the Higgs effective couplings*, *JHEP* **04** (2010) 126 [[arXiv:0907.5413](#)] [[INSPIRE](#)].
- [43] M.S. Carena, D. Garcia, U. Nierste and C.E. Wagner, *Effective Lagrangian for the  $\bar{t}bH^+$  interaction in the MSSM and charged Higgs phenomenology*, *Nucl. Phys. B* **577** (2000) 88 [[hep-ph/9912516](#)] [[INSPIRE](#)].
- [44] A. Djouadi, *Precision Higgs coupling measurements at the LHC through ratios of production cross sections*, [arXiv:1208.3436](#) [[INSPIRE](#)].
- [45] M. Misiak et al., *Estimate of  $B(\bar{B} \rightarrow X_s \gamma)$  at  $O(\alpha_s^2)$* , *Phys. Rev. Lett.* **98** (2007) 022002 [[hep-ph/0609232](#)] [[INSPIRE](#)].
- [46] M. Misiak and M. Steinhauser, *NNLO QCD corrections to the  $\bar{B} \rightarrow X_s \gamma$  matrix elements using interpolation in  $m_c$* , *Nucl. Phys. B* **764** (2007) 62 [[hep-ph/0609241](#)] [[INSPIRE](#)].
- [47] A. Freitas and U. Haisch,  *$\bar{B} \rightarrow X_s \gamma$  in two universal extra dimensions*, *Phys. Rev. D* **77** (2008) 093008 [[arXiv:0801.4346](#)] [[INSPIRE](#)].
- [48] M. Misiak and M. Steinhauser, *Three loop matching of the dipole operators for  $b \rightarrow s\gamma$  and  $b \rightarrow sg$* , *Nucl. Phys. B* **683** (2004) 277 [[hep-ph/0401041](#)] [[INSPIRE](#)].
- [49] G. Degrandi, P. Gambino and G. Giudice,  *$B \rightarrow X_s \gamma$  in supersymmetry: large contributions beyond the leading order*, *JHEP* **12** (2000) 009 [[hep-ph/0009337](#)] [[INSPIRE](#)].
- [50] M.S. Carena, D. Garcia, U. Nierste and C.E. Wagner,  *$b \rightarrow s\gamma$  and supersymmetry with large  $\tan \beta$* , *Phys. Lett. B* **499** (2001) 141 [[hep-ph/0010003](#)] [[INSPIRE](#)].
- [51] B. Grinstein and M.B. Wise, *Weak radiative B meson decay as a probe of the Higgs sector*, *Phys. Lett. B* **201** (1988) 274 [[INSPIRE](#)].
- [52] W.-S. Hou and R. Willey, *Effects of charged Higgs bosons on the processes  $b \rightarrow s\gamma$ ,  $b \rightarrow sg^*$  and  $b \rightarrow sl^+\ell^-$* , *Phys. Lett. B* **202** (1988) 591 [[INSPIRE](#)].

- [53] W. Altmannshofer and D.M. Straub, *Viability of MSSM scenarios at very large  $\tan\beta$* , *JHEP* **09** (2010) 078 [[arXiv:1004.1993](#)] [[INSPIRE](#)].
- [54] R. Barbieri and G. Giudice,  *$b \rightarrow s\gamma$  decay and supersymmetry*, *Phys. Lett. B* **309** (1993) 86 [[hep-ph/9303270](#)] [[INSPIRE](#)].
- [55] C. Bobeth, M. Misiak and J. Urban, *Photonic penguins at two loops and  $m_t$  dependence of  $BR[B \rightarrow X_s \ell^+ \ell^-]$* , *Nucl. Phys. B* **574** (2000) 291 [[hep-ph/9910220](#)] [[INSPIRE](#)].
- [56] C. Bobeth, P. Gambino, M. Gorbahn and U. Haisch, *Complete NNLO QCD analysis of  $\bar{B} \rightarrow X_s \ell^+ \ell^-$  and higher order electroweak effects*, *JHEP* **04** (2004) 071 [[hep-ph/0312090](#)] [[INSPIRE](#)].
- [57] K. Babu and C.F. Kolda, *Higgs mediated  $B^0 \rightarrow \mu^+ \mu^-$  in minimal supersymmetry*, *Phys. Rev. Lett.* **84** (2000) 228 [[hep-ph/9909476](#)] [[INSPIRE](#)].
- [58] C. Bobeth, A.J. Buras, F. Krüger and J. Urban, *QCD corrections to  $\bar{B} \rightarrow X_{d,s} \nu \bar{\nu}$ ,  $\bar{B}_{d,s} \rightarrow \ell^+ \ell^-$ ,  $K \rightarrow \pi \nu \bar{\nu}$  and  $K_L \rightarrow \mu^+ \mu^-$  in the MSSM*, *Nucl. Phys. B* **630** (2002) 87 [[hep-ph/0112305](#)] [[INSPIRE](#)].
- [59] P.H. Chankowski and L. Slawianowska,  *$B_{d,s}^0 \rightarrow \mu^- \mu^+$  decay in the MSSM*, *Phys. Rev. D* **63** (2001) 054012 [[hep-ph/0008046](#)] [[INSPIRE](#)].
- [60] S.P. Martin and J.D. Wells, *Muon anomalous magnetic dipole moment in supersymmetric theories*, *Phys. Rev. D* **64** (2001) 035003 [[hep-ph/0103067](#)] [[INSPIRE](#)].
- [61] D. Stöckinger, *The muon magnetic moment and supersymmetry*, *J. Phys. G* **34** (2007) R45 [[hep-ph/0609168](#)] [[INSPIRE](#)].
- [62] T. Moroi, *The muon anomalous magnetic dipole moment in the minimal supersymmetric Standard Model*, *Phys. Rev. D* **53** (1996) 6565 [*Erratum ibid.* **D 56** (1997) 4424] [[hep-ph/9512396](#)] [[INSPIRE](#)].
- [63] K. Griest and D. Seckel, *Three exceptions in the calculation of relic abundances*, *Phys. Rev. D* **43** (1991) 3191 [[INSPIRE](#)].
- [64] J. Edsjo and P. Gondolo, *Neutralino relic density including coannihilations*, *Phys. Rev. D* **56** (1997) 1879 [[hep-ph/9704361](#)] [[INSPIRE](#)].
- [65] J.R. Ellis, T. Falk, K.A. Olive and M. Srednicki, *Calculations of neutralino-stau coannihilation channels and the cosmologically relevant region of MSSM parameter space*, *Astropart. Phys.* **13** (2000) 181 [*Erratum ibid.* **15** (2001) 413] [[hep-ph/9905481](#)] [[INSPIRE](#)].
- [66] M. Gomez, G. Lazarides and C. Pallis, *Supersymmetric cold dark matter with Yukawa unification*, *Phys. Rev. D* **61** (2000) 123512 [[hep-ph/9907261](#)] [[INSPIRE](#)].
- [67] B. Allanach, *SOFTSUSY: a program for calculating supersymmetric spectra*, *Comput. Phys. Commun.* **143** (2002) 305 [[hep-ph/0104145](#)] [[INSPIRE](#)].
- [68] *SOFTSUSY webpage*, <http://softsusy.hepforge.org/>.
- [69] M. Spira, *HIGLU: a program for the calculation of the total Higgs production cross-section at hadron colliders via gluon fusion including QCD corrections*, [hep-ph/9510347](#) [[INSPIRE](#)].
- [70] *HIGLU code and manual webpage*, <http://people.web.psi.ch/spira/higlu>.
- [71] A. Djouadi, J. Kalinowski and M. Spira, *HDECAY: a program for Higgs boson decays in the Standard Model and its supersymmetric extension*, *Comput. Phys. Commun.* **108** (1998) 56 [[hep-ph/9704448](#)] [[INSPIRE](#)].



- [72] *HDECAY code and manual webpage*, <http://people.web.psi.ch/spira/hdecay>.
- [73] F. Mahmoudi, *SuperIso: a program for calculating the isospin asymmetry of  $B \rightarrow K^* \gamma$  in the MSSM*, *Comput. Phys. Commun.* **178** (2008) 745 [[arXiv:0710.2067](#)] [[INSPIRE](#)].
- [74] F. Mahmoudi, *SuperIso v2.3: a program for calculating flavor physics observables in supersymmetry*, *Comput. Phys. Commun.* **180** (2009) 1579 [[arXiv:0808.3144](#)] [[INSPIRE](#)].
- [75] *SuperIso webpage*, <http://superiso.in2p3.fr/>.
- [76] A. Arbey and F. Mahmoudi, *SuperIso relic: a program for calculating relic density and flavor physics observables in supersymmetry*, *Comput. Phys. Commun.* **181** (2010) 1277 [[arXiv:0906.0369](#)] [[INSPIRE](#)].
- [77] A. Djouadi, J.-L. Kneur and G. Moultaka, *SuSpect: a fortran code for the supersymmetric and Higgs particle spectrum in the MSSM*, *Comput. Phys. Commun.* **176** (2007) 426 [[hep-ph/0211331](#)] [[INSPIRE](#)].
- [78] *SuSpect webpage*, <http://www.lpta.univ-montp2.fr/users/kneur/Suspect>.
- [79] S. Heinemeyer, W. Hollik and G. Weiglein, *FeynHiggs: a program for the calculation of the masses of the neutral CP even Higgs bosons in the MSSM*, *Comput. Phys. Commun.* **124** (2000) 76 [[hep-ph/9812320](#)] [[INSPIRE](#)].
- [80] *FeynHiggs webpage*, <http://www.feynhiggs.de/>.
- [81] B. Allanach, A. Djouadi, J. Kneur, W. Porod and P. Slavich, *Precise determination of the neutral Higgs boson masses in the MSSM*, *JHEP* **09** (2004) 044 [[hep-ph/0406166](#)] [[INSPIRE](#)].
- [82] S. Alekhin, A. Djouadi and S. Moch, *The top quark and Higgs boson masses and the stability of the electroweak vacuum*, *Phys. Lett. B* **716** (2012) 214 [[arXiv:1207.0980](#)] [[INSPIRE](#)].
- [83] PARTICLE DATA GROUP collaboration, J. Beringer et al., *Review of particle physics*, *Phys. Rev. D* **86** (2012) 010001 [[INSPIRE](#)].
- [84] A. Arbey, M. Battaglia and F. Mahmoudi, *Implications of LHC searches on SUSY particle spectra: the pMSSM parameter space with neutralino dark matter*, *Eur. Phys. J. C* **72** (2012) 1847 [[arXiv:1110.3726](#)] [[INSPIRE](#)].
- [85] A. Arbey, M. Battaglia and F. Mahmoudi, *Constraints on the MSSM from the Higgs sector: a pMSSM study of Higgs searches,  $B_s^0 \rightarrow \mu^+ \mu^-$  and dark matter direct detection*, *Eur. Phys. J. C* **72** (2012) 1906 [[arXiv:1112.3032](#)] [[INSPIRE](#)].
- [86] R. Rattazzi and U. Sarid, *Large  $\tan \beta$  in gauge mediated SUSY breaking models*, *Nucl. Phys. B* **501** (1997) 297 [[hep-ph/9612464](#)] [[INSPIRE](#)].
- [87] J. Hisano and S. Sugiyama, *Charge-breaking constraints on left-right mixing of stau's*, *Phys. Lett. B* **696** (2011) 92 [[arXiv:1011.0260](#)] [[INSPIRE](#)].
- [88] R. Sato, K. Tobioka and N. Yokozaki, *Enhanced diphoton signal of the Higgs boson and the muon  $g-2$  in gauge mediation models*, *Phys. Lett. B* **716** (2012) 441 [[arXiv:1208.2630](#)] [[INSPIRE](#)].
- [89] T. Kitahara, *Vacuum stability constraints on the enhancement of the  $h \rightarrow \gamma \gamma$  rate in the MSSM*, *JHEP* **11** (2012) 021 [[arXiv:1208.4792](#)] [[INSPIRE](#)].
- [90] HEAVY FLAVOR AVERAGING GROUP collaboration, Y. Amhis et al., *Averages of b-hadron, c-hadron and  $\tau$ -lepton properties as of early 2012*, [arXiv:1207.1158](#) [[INSPIRE](#)].



- [91] *Heavy Flavor Averaging Group (HFAG) averages online update webpage*  
<http://www.slac.stanford.edu/xorg/hfag>.
- [92] ATLAS, CMS and LHCb collaborations, *Search for the rare decays  $B \rightarrow \mu\mu$  at the LHC with the ATLAS, CMS and LHCb experiments*, [ATLAS-CONF-2012-061](#), CERN, Geneva Switzerland (2012) [CMS-PAS-BPH-12-009] [LHCb-CONF-2012-017] [INSPIRE].
- [93] K. De Bruyn et al., *Branching ratio measurements of  $B_s$  decays*, *Phys. Rev. D* **86** (2012) 014027 [[arXiv:1204.1735](#)] [INSPIRE].
- [94] K. De Bruyn et al., *Probing new physics via the  $B_s^0 \rightarrow \mu^+\mu^-$  effective lifetime*, *Phys. Rev. Lett.* **109** (2012) 041801 [[arXiv:1204.1737](#)] [INSPIRE].
- [95] MUON G-2 collaboration, G. Bennett et al., *Final report of the muon E821 anomalous magnetic moment measurement at BNL*, *Phys. Rev. D* **73** (2006) 072003 [[hep-ex/0602035](#)] [INSPIRE].
- [96] K. Hagiwara, R. Liao, A.D. Martin, D. Nomura and T. Teubner,  *$(g-2)_\mu$  and  $\alpha(M_Z^2)$  re-evaluated using new precise data*, *J. Phys. G* **38** (2011) 085003 [[arXiv:1105.3149](#)] [INSPIRE].
- [97] T. Aoyama, M. Hayakawa, T. Kinoshita and M. Nio, *Complete tenth-order QED contribution to the muon  $g-2$* , *Phys. Rev. Lett.* **109** (2012) 111808 [[arXiv:1205.5370](#)] [INSPIRE].
- [98] WMAP collaboration, E. Komatsu et al., *Seven-year Wilkinson Microwave Anisotropy Probe (WMAP) observations: cosmological interpretation*, *Astrophys. J. Suppl.* **192** (2011) 18 [[arXiv:1001.4538](#)] [INSPIRE].
- [99] A. Arbey, M. Battaglia and F. Mahmoudi, *Light neutralino dark matter in the pMSSM: implications of LEP, LHC and dark matter searches on SUSY particle spectra*, *Eur. Phys. J. C* **72** (2012) 2169 [[arXiv:1205.2557](#)] [INSPIRE].
- [100] BABAR collaboration, J. Lees et al., *Evidence for an excess of  $\bar{B} \rightarrow D^{(*)}\tau^-\bar{\nu}_\tau$  decays*, *Phys. Rev. Lett.* **109** (2012) 101802 [[arXiv:1205.5442](#)] [INSPIRE].