

Additional notes to the check-list of Korean cultivated plants (3)

KARL HAMMER, RI JONG-DZAE¹ and HOANG HO-DZUN¹

(Eingegangen am 2. Dezember 1988)

Summary

Recent exploration work and additional literature studies resulted in new information for the check-list of Korean cultivated plants (BAIK et al. 1986). 55 new species could be included. For another 24 species collections and/or observations are presented for the first time. Collections are reported for 9 species which have been already observed in the past years.

Introduction

As a result of the cooperation between institutes of the Academy of Sciences of the Democratic People's Republic of Korea and the Academy of Sciences of the German Democratic Republic a check-list of the Korean cultivated plants was published (BAIK et al. 1986) which included 316 items mostly on the species level. Based on field work in 1986 (KIM et al. 1987) and 1987 (HAMMER et al. 1988) as well as literature studies additional notes have been compiled (HAMMER et al. 1987, HOANG and HAMMER 1988) which added 88 new species. A recent collecting activity (HAMMER et al. 1989) resulted in a few additional species only. The greatest input came from a book (IM et al. 1987) which summarizes the introduction activities of the Central Botanical Garden, Pyongyang. We have already stressed the importance of the introduction work done by the Botanical Gardens in the D. P. R. K. (HAMMER et al. 1986). Several of the introduced plants could be observed by us under cultivation in rather remote areas of the country, e.g. *Solanum nigrum* L. and *Urtica laetevirens* Maxim., so that an inclusion of the most important species from IM et al. (1987) seemed to be advisable. They have been compiled together with recent field observations and some interesting results of the determination work, mainly done on material reproduced in the experimental fields at Gatersleben, so that a further additional list can be presented. Prof. M. FISCHER, Dresden-Pillnitz, and Dipl.-Gärtn. H.-J. ALBRECHT, Berlin, have kindly contributed some interesting observations from their trip to the D. P. R. K. in 1988 (F.-A.).

¹ Botanical Institute of the Academy of Sciences of the D. P. R. K., Pyongyang

Explanations

Species not present in the previous lists (BAIK et al. 1986, HAMMER et al. 1987, HOANG and HAMMER 1988) are printed in bold face. Species are noted which have been collected (C.) and/or observed (O.) by us for the first time during the expeditions. The book of RI and HOANG (1984) is the principal source of Korean plant names. The distribution is indicated as N. (northern part), M. (central part), S. (southern part) and G. (general distribution). The delimitation of these regions is explained by BAIK et al. (1986). The modes of use include fodder crops—Fo., fibre crops—Fi., fruit crops—Fr., industrial crops—I., medicinal plants—M., nuts—N., oil crops—Oi. and spices and condiments—Sp.

The plant parts used are given in brackets: Bark (ba.), flowers (fl.), fruits (fr.), herb (h.), leaves (l.), roots, rhizomes and other related parts (r.), seeds (s.), stem (st.).

A concise synonymy is given for the newly presented species containing the accepted names, their basionyms and a few "Eastern" synonyms. For a more complete synonymy see Fl. Cor., Append. and SCHULTZE-MOTEL (1986).

Some remarks (Rem.) are made concerning collection and/or observation, specifications of use and other remarkable items. Illustrations of some typical plants have been taken from Dzosonsigmul. (figs. 1, 3, 6, 8–10, 12–14) by kind permission of the Botanical Institute of the Academy of Sciences of the D. P. R. K.

Additions to the check-list

Abelmoschus manihot (L.) Medik. — Rem.: C. Pyongyang district.

Acanthopanax sessiliflorum (Rupr. et Maxim.) Seem. in J. Bot. 5: 239, 1867; Fl. Cor. 4: 458, 1976; Dzungangs. 61, 1987. —

Panax sessiliflorum Rupr. et Maxim. in Bull. Ac. Pétersb. 15: 367, 1856. (Araliaceae).

Ogalpinamu

Distr.: N. M.

Usa: M. (ba.)

Achillea millefolium L., Sp. Pl. 899, 1753; Dzungangs. 112, 1987. (Compositae).

Tschoniptobpul

Distr.: M.

Use: M. (h.)

Agastache rugosa (Fisch. et Mey.) Kuntze — Rem.: C. Pyongyang district.

Allium chinense G. Don — Rem.: O. South Hwanghae. Fig. 1.

Allium fistulosum L. — Rem.: C. South Hwanghae.

Alnus japonica Steud., Nomencl. ed. 2, 1: 55, 1840; Fl. Cor. 1: 211, 1972; Dzungangs. 21, 1987. (Corylaceae).

Orinamu

Distr.: N. M.

Use: soil erosion control

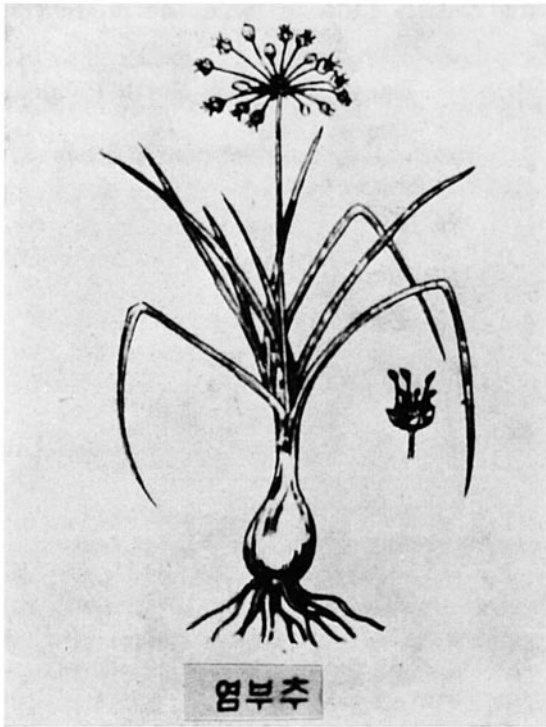


Fig. 1 *Allium chinense* G. Don is occasionally grown as a vegetable and also as a medicinal plant

Althaea officinalis L., Sp. Pl. 686, 1753; Dzungangs. 96, 1987. (Malvaceae).
Jagdzoobsigot

Distr.: M.

Use: M. (r.)

Aronia melanocarpa (Michx.) Elliott, Sketch bot. S. Carolina 1: 556, 1821; Dzungangs. 35, 1987. — *Mespilus arbutifolia* L. var. *melanocarpa* Michx., Fl. bor.-amer. 1: 592, 1903. (Rosaceae). Dannamu, Aronia

Distr.: M.

Use: Fr.

Artemisia absinthium L., Sp. Pl. 848, 1753; Dzungangs. 113, 1987. (Compositae).
Bugjagsug

Distr.: M.

Use: M. (h.)

Arundo donax L., Sp. Pl. 81, 1753; Fl. Cor. 7: 184, 1976; Dzungangs. 122, 1987. (Gramineae).

Ongdzingal

Distr.: M.

Use: Fi., hedges

Rem.: O. Kaesong district.

Atractylodes ovata (Thunb.) DC., Prodr. 7: 48, 1838; Fl. Cor., Append. 369, 1979; Dzungangs. 114, 1987. — *Atractylis ovata* Thunb., Fl. Jap. 306, 1784; *Atractylodes japonica* Koidz. et Kitag. in Acta Phytotax. Geobot., Kyoto 4: 178, 1935; Fl. Cor. 6: 149, 1976. (Compositae).

Sabdzu, Tschangtschul

Distr.: N. M.

Use: M. (r.), Fo. (l.)

Basella alba L. – Rem.: C. Pyongyang district. Cultivated for the production of red dye (fruits) for colouring food.

Benincasa hispida (Thunb.) Cogn. – Rem.: C. Kaesong district, North Pyongan near Hyangsan. Fig. 2.

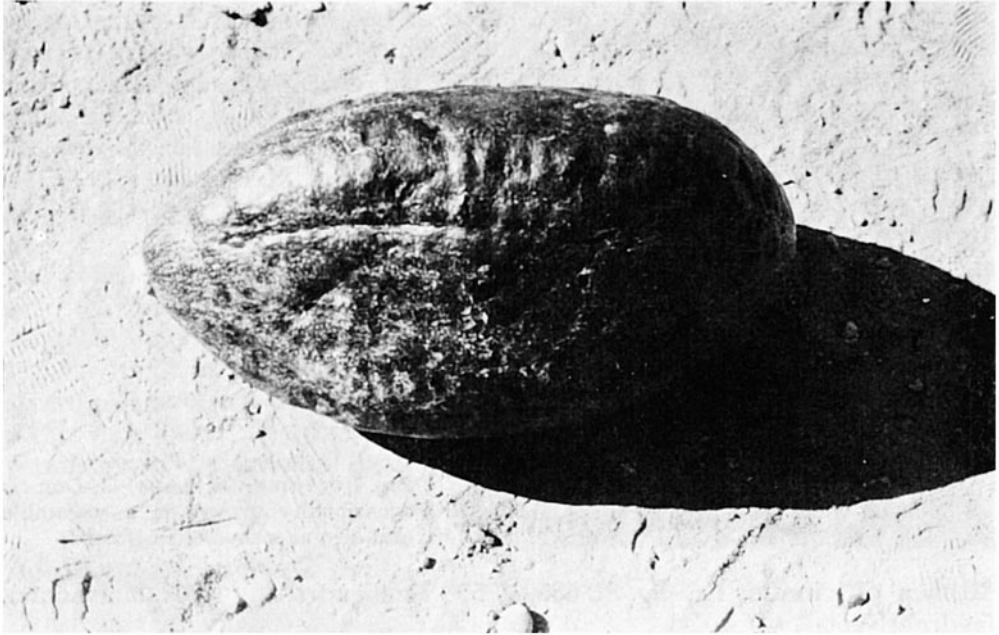


Fig. 2 A typical Korean race of *Benincasa hispida* (Thunb.) Cogn.

Beta vulgaris L. convar. *cicla* (L.) Alef. – Rem.: O. South Hwanghae.

Brassica rapa L. subsp. *rapa* – Rem.: O. South Hwanghae.

Caragana arborescens Lam., Encycl. Meth. 1: 615, 1783; Fl. Cor. 4: 73, 1976; Dzungangs. 46, 1987. (Leguminosae).

Kungoldamtscho

Distr.: G. Use: M. (r.)

Carum carvi L., Sp. Pl. 263, 1753; Fl. Cor. 4: 529, 1976; Dzungangs. 99, 1987. (Umbelliferae).

Karum

Distr.: M. Use: M. (s.)

Carya illinoensis (Wangenh.) K. Koch, Dendr. 1: 593, 1869. – *Juglans illinoensis* Wangenh., Beytr. Deutsch. Holzg. Forstwiss. Nordam. Holz. 54, 1787; *Carya pecan* Engl. et Graebn. in Notizbl. Bot. Gart. Berlin App. 9, 1902, non Nutt. 1842; Dzungangs. 17, 1987. (Juglandaceae).

Silbugnamu, Pekannamu

Distr.: M. Use: N., Oi. (fr.)

Cassia nomame (Sieb.) Honda – Rem.: C. Pyongyang district.

Cassia occidentalis L. – Rem.: C. North Hwanghae.

Castanea bungeana Bl. – Rem.: O. Pyongyang district.

Chrysanthemum lavandulaefolium Mak. in J. Jap. Bot. 3 (7): 26, 1926; Fl. Cor. 6: 280, 1976; Dzungangs. 115, 1987. (Compositae).

Sangug

Distr.: M.

Use: M. (fl.) Fig. 3.



Fig. 3 *Chrysanthemum lavandulaefolium* Mak. is a frequent wild plant in central parts of Korea. Occasionally it is cultivated as a medicinal plant

Chrysanthemum zawadskii Herb., Addit. Fl. Galic. 44, 1831; Fl. Cor. 6: 283, 1976; Dzungangs. 116, 1987. – *Dendranthema zawadskii* (Herb.) Tzvel. in Fl. URSS 26: 376, 1961. (Compositae).

Gudzdoltscho

Distr.: M.

Use: M. (h.)

Colocasia esculenta (L.) Schott – Rem.: C. Kaesong district. Fig. 4.

Convallaria keiskei Miq. in Ann. Mus. Bot. Lugd. Bat. 3: 148, 1867; Fl. Cor. 7: 527, 1976; Dzungangs. 128, 1987. (Liliaceae).

Unbangulgot

Distr.: G.

Use: M. (h.), ornamental plant

Coriandrum sativum L. – Rem.: The leaves are used for flavouring dishes (North Hwanghae).



Fig. 4 Rhizomes of *Colocasia esculenta* (L.) Schott collected in the Kaesong district

Corylus avellana L., Sp. Pl. 998, 1753; Dzungangs. 23, 1987. (Betulaceae).

Kungaeamnamu

Distr.: M.

Use: N., Oi. (fr.)

Cucurbita moschata (Duch.) Poir. — Rem.: Typical fruits are shown in fig. 5. Dr. THOMAS C. ANDRES, Geneva, U.S.A., kindly informed us that fig. 13 in BAIK et al. (1986) shows *C. maxima* Duch. in Lam., possibly 'Hubbard squash'. This cultivar is a recent introduction to Korea.



Fig. 5 Typical fruits of *Cucurbita moschata* (Duch.) Poir.

Dahlia pinnata Cav., Ic. et Descr. Pl. 1: 57, 1791; Fl. Cor., Append. 377, 1979; Dzungangs. 116, 1987. (Compositae).

Daria

Distr.: G.

Use: M. (r.), ornamental plant

Digitalis purpurea L. – Rem.: C. North Hwanghae.

Elaeagnus multiflora Thunb., Fl. Jap. 68, 1784; Dzungangs. 60, 1987. (Elaeagnaceae).

Kunjolmaeborisunamu

Distr.: M.

Use: Fr.

Elaeagnus umbellata Thunb., Fl. Jap. 66, 1784; Fl. Cor. 4: 389, 1976; Dzungangs. 60, 1987. (Elaeagnaceae).

Borisunamu

Distr.: M.

Use: Fr., M. (fr.)

Eleutherococcus senticosus (Rupr. et Maxim.) Maxim. in Mém. Ac. Pétersb. Sav. étr. 9: 132, 1859; Fl. Cor. 4: 460, 1976; Dzungangs. 62, 1987. – *Hedera senticosa* Rupr. et Maxim. in Bull. Ac. Pétersb. 15: 134, 1857. (Araliaceae).

Gasiogalpinamu

Distr.: M.

Use: M. (ba.)

Eutrema koreana (Nak.) Hammer – Rem.: O. North Pyongan near Hyangsan.

Gypsophila oldhamiana Miq. in Ann. Mus. Bot. Lugd. Bat. 3: 187, 1867; Fl. Cor. 2: 156, 1974; Dzungangs. 82, 1987. (Caryophyllaceae).

Madinamul

Distr.: M.

Use: M. (r.)

Hibiscus syriacus L., Sp. Pl. 695, 1753; Fl. Cor. 4: 302, 1976; Dzungangs. 57, 1987. (Malvaceae)

Mungughoa

Distr.: G.

Use: M. (fl., r., ba.) ornamental plant

Rem.: O. North Pyongan near Hyangsan.

Hippophae rhamnoides L., Sp. Pl. 1023, 1753; Dzungangs. 60, 1987. (Elaeagnaceae).

Galmaeborisunamu, Unnamu

Distr.: M.

Use: Fr.

Hordeum vulgare L. – Rem.: The naked barleys collected by us belong to var. *coeleste* L. An interesting race of barley with covered grains is var. *hypatherum* (Vav. et Orl.) Mansf.

Houttuynia cordata Thunb. – Rem.: C. Southern North Hwanghae.

Juglans regia L., Sp. Pl. 987, 1753; Dzungangs. 18, 1987. (Juglandaceae).

Ginhodunamu, Kunhodunamu, Wanghodunamu

Distr.: M. S.

Use: N., Oi. (fr.)

Juglans sinensis (DC.) Dode – Rem.: O. South Hwanghae. Fig. 6.



Fig. 6 *Juglans sinensis* (DC.) Dode is frequently planted along the road sides in regions with moderate winter temperatures

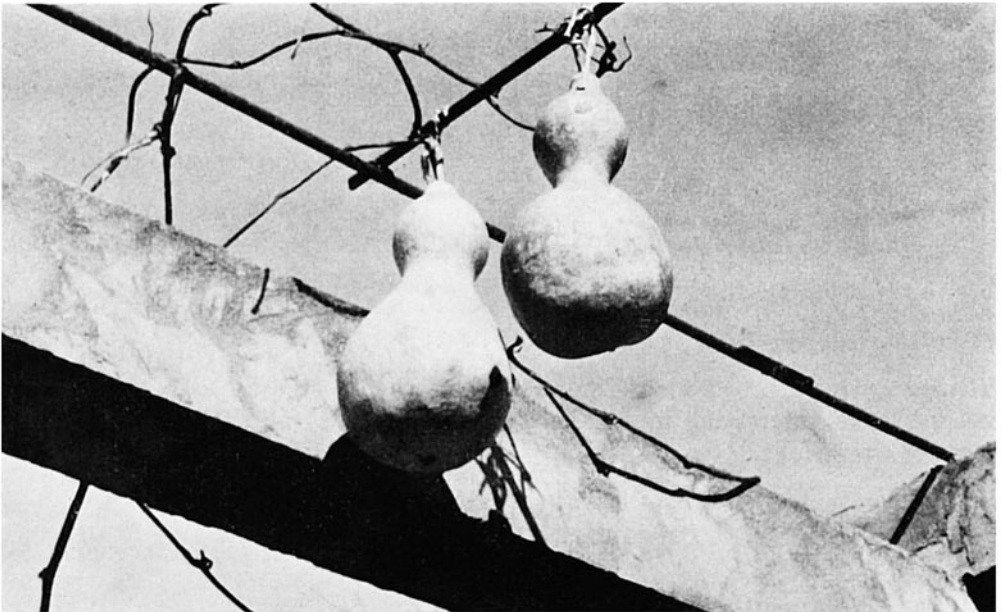


Fig. 7 Fruits of *Lagenaria siceraria* (Molina) Standl. subsp. *siceraria*, Pyongyang district

Lagenaria siceraria (Molina) Standl. – Rem.: Fruits of subsp. *siceraria*, possibly of more recent introduction. Fig. 7.

Ledebouriella divaricata (Turcz.) Hiroe – Rem.: C. Southern North Hwanghae. Fig. 8.

Leonurus sibiricus L., Sp. Pl. 584, 1753; Fl. Cor. 5: 239, 1975; Dzungangs. 105, 1987. (Labiatae).

Igmotscho

Distr. M.

Use: M. (h.)

Linum usitatissimum L. – Rem.: C. Southern North Hwanghae. Cultivated as a medicinal plant.

Lonicera japonica Thunb., Fl. Jap. 89, 1784; Fl. Cor. 6: 59, 1976; Dzungangs. 70, 1987. (Caprifoliaceae).

Indongdonggul

Distr.: M. S.

Use: M. (fl., l.), I. (fl., perfume)

Lycium barbarum L., Sp. Pl. 192, 1753; Dzungangs. 68, 1987. (Solanaceae). Dangugidzanamu

Distr.: M.

Use: M. (fr.)

Magnolia sieboldii K. Koch, Hort. Dendr. 4, 1853; Fl. Cor. 2: 172, 1974; Dzungangs. 28, 1987. – *M. verecunda* Koidz. in Bot. Mag., Tokyo 40: 339, 1926. (Magnoliaceae).

Mogran, Hambaggotnamu

Distr.: G.

Use: M. (fl., ba.) ornamental plant

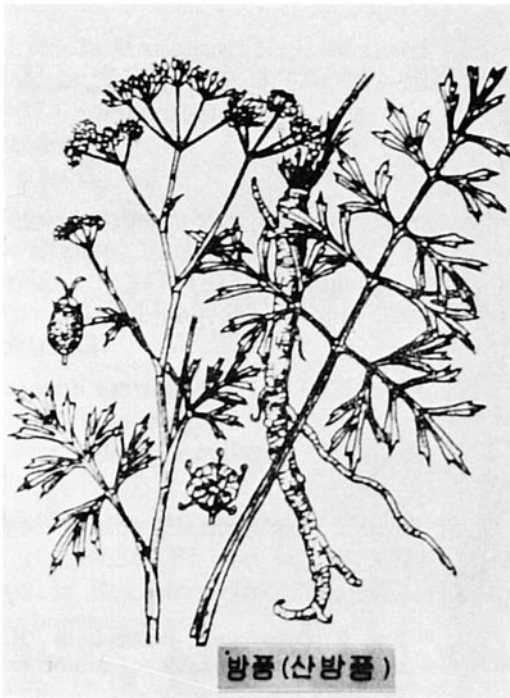


Fig. 8 *Ledebouriella divaricata* (Turcz.) Hiroe, a root vegetable

Malus baccata (L.) Borkh. – Rem.: Grafting stock for apples – O. (F.–A.).

Malva verticillata L. – Rem.: C. Southern North Hwanghae.

Medicago sativa L. – Rem.: C. Pyongyang district.

Mirabilis jalapa L., Sp. Pl. 252, 1753; Fl. Cor. 2: 117, 1974; Dzungangs. 80, 1987. (Nyctaginaceae).

Bunggot

Distr.: G.

Use: M. (h.)

Miscanthus sinensis Anders. – O. North Hwanghae

Ocimum gratissimum L., Sp. Pl. 1197, 1753; Dzungangs. 106, 1987. (Labiatae).

Hjangggulpul

Distr.: M.

Use: I. (h., perfume)

Ostericum praeteritum Kitag. – Rem.: C. South Hwanghae, Southern North Hwanghae. Fig. 9.

Paeonia japonica (Mak.) Miyabe et Takeda in Gard. Chron. ser. 3, 43: 366 var. **pilosa** Nak. in J. Jap. Bot. 13: 395, 1937; Fl. Cor. 2: 263, 1974; Dzungangs. 85, 1987. (Paeoniaceae).

Hinhambaggot, Baegdzagjag

Distr.: M.

Use: M. (r.)

Paeonia lactiflora Pall. – C. North Pyongan near Hyangsan. Fig. 10.



Fig. 9 *Ostericum praeteritum* Kitag., a root vegetable of minor importance



Fig.10 From the roots of *Paeonia lactiflora* Pall. tonics and remedies are produced

Panicum miliaceum L. – C. North Pyongan near Hyangsan.

Phaseolus lunatus L. – C. Pyongyang district. Fig. 11.

Physalis franchetii Mast. in Gard. Chron. 2: 434, 1894 var. **bunyardii** hort. ex Mak. in J. Jap. Bot. 3 (7): 27, 1926; Fl. Cor. 5: 270, 1975; Dzungangs. 107, 1987. (Solanaceae).

Ggoari

Distr.: G.

Use: M. (h.)

Pogostemon cablin (Blanco) Benth. in DC., Prodr. 12: 156, 1848. – *Mentha cablin* Blanco, Fl. Filip. 473, 1837; *Pogostemon patchouly* Pellet. in Mém. Soc. Sci. Orléans 5: 277, 1845; Dzungangs. 106, 1987. (Labiatae).

Hjanggoanghjang, Bbatschuri

Distr.: M.

Use: I. (h., perfume)

Prunus armeniaca L., Sp. Pl. 474, 1753; Fl. Cor. 3: 234, 1974; Dzungangs. 42, 1987. (Rosaceae).

Hoerjongbaegsalgunamu

Distr.: N. M.

Use: Fr.

Prunus davidiana (Carr.) Franch. in Nouv. Arch. Mus. Hist. Nat. Paris, sér. 2, 5: 103, 1883; Fl. Cor. 3: 237, 1974; Dzungangs. 42, 1987. – *Persica davidiana* Carr. in Rev. Hort. 1872: 74, 1872. (Rosaceae).

Sanbogsunganamu

Distr.: M.

Use: grafting stock

Rem.: O. (F.–A.).

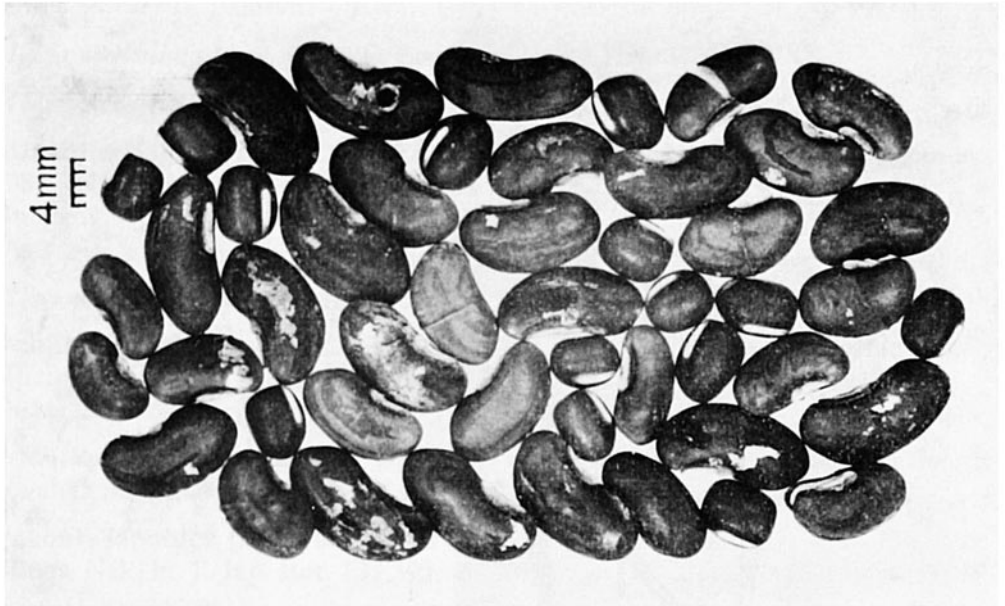


Fig. 11 *Phaseolus lunatus* L. in mixture with seeds of *Vigna angularis* from Tosan, North Hwanghae

Prunus leveilleana Koehne in Sarg., Pl. Wils. 1: 250, 1912 var. ***spontanea*** (Maxim.) Kim in Fl. Cor. 3: 245, 1974; Fl. Cor., Append. 156, 1979. — *P. pseudocerasus* Lindl. var. *spontanea* Maxim. in Bull. Ac. Pétersb. 29: 102, 1883. (Rosaceae).

Botnamu

Distr.: N. M.

Rem.: O. (F.-A.).

Use: grafting stock

Prunus mandshurica (Maxim.) Koehne, Deutsch. Dendr. 318, 1893; Fl. Cor. 3: 231, 1974. — *P. armeniaca* L. var. *mandshurica* Maxim. in Mel. Bot. Ac. Pétersb. 11: 675, 1883. (Rosaceae).

Sansalgunamu

Distr.: N. M.

Rem.: O. (F.-A.).

Use: grafting stock

Prunus nakaii Lev. in Feddes Rep. 7: 198, 1909 var. ***ishidoyana*** (Nak.) Kim in Fl. Cor. 3: 247, 1974; Fl. Cor., Append. 157, 1979. — *P. ishidozana* Nak. in Bot. Mag., Tokyo 33: 8, 1919. (Rosaceae).

Sanisuratschinamu

Distr.: N.

Rem.: O. (F.-A.).

Use: grafting stock

Prunus salicina Lindl. — Rem.: Grafting stock — O. (F.-A.).

Prunus sibirica L., Sp. Pl. 474, 1753; Fl. Cor. 3: 235, 1974; Dzungangs. 45, 1987. (Rosaceae).

Bugsansalgunamu

Distr.: M.

Use: M., Oi. (s.), grafting stock

Prunus tomentosa Thunb. – Rem.: Grafting stock – O. (F.–A.).

Pyrus ussuriensis Maxim. – Rem.: Grafting stock – O. (F.–A.).

Ribes burejense Fr. Schm. in Mém. Acad. Sci. Pétersb., ser. 7, 12 (2): 42, 1868; Fl. Cor. 3: 12, 1974. – *Grossularia burejensis* (Fr. Schm.) Berger in N. Y. Agr. Exp. Sta. Techn. Bull. no. 109: 112, 1924. (Saxifragaceae).

Banurgatschibabnamu

Distr.: N. M.

Use: Fr.

Rem.: Used for the genetic improvement of European *Ribes* spp. O. Hyesan, Ryanggang (F.–A.).

Ribes nigrum L., Sp. Pl. 201, 1753; Dzungangs. 31, 1987. (Saxifragaceae).

Gomunsongimulaengdunamu, Gomunggatschibabnamu

Distr.: M.

Use: Fr.

Rosa × centifolia L., Sp. Pl. 491, 1753; Dzungangs. 36, 1987. (Rosaceae).

Bulgunggothjangdzangmi

Distr.: M.

Use: I. (fl., perfume)

Rosa damascena Mill., Gard. Dict. ed. 8, no. 15, 1768; Dzungangs. 36, 1987. (Rosaceae).

Bunhonggothjangdzangmi

Distr.: M.

Use: I. (fl., perfume)

Rubus crataegifolius Bunge in Mém. Ac. Pétersb. 2: 98, 1835; Fl. Cor. 3: 154, 1974. (Rosaceae).

Sanddolginamu

Distr.: N. M.

Use: Fr.

Rem.: Breeding work is done on this species. O. Hyesan, Ryanggang (F.–A.).

Salvia sclarea L., Sp. Pl. 27, 1753; Dzungangs. 106, 1987. (Labiatae).

Hjangbulgot, Hjangsalbia

Distr.: M.

Use: I. (h., perfume)

Scirpus tabernaemontani Gmel., Fl. Bad. 1: 101, 1805; Fl. Cor. 7: 264, 1876; Dzungangs. 124, 1987. (Cyperaceae).

Kungol

Distr.: M.

Use.: Fi.

Solanum nigrum L., Sp. Pl. 186, 1753; Fl. Cor. 5: 265, 1975; Dzungangs. 109, 1987. (Solanaceae).

Ggamadzung

Distr.: N. M.

Use: M. (h.)

Rem.: O. South Hwanghae, 1987.

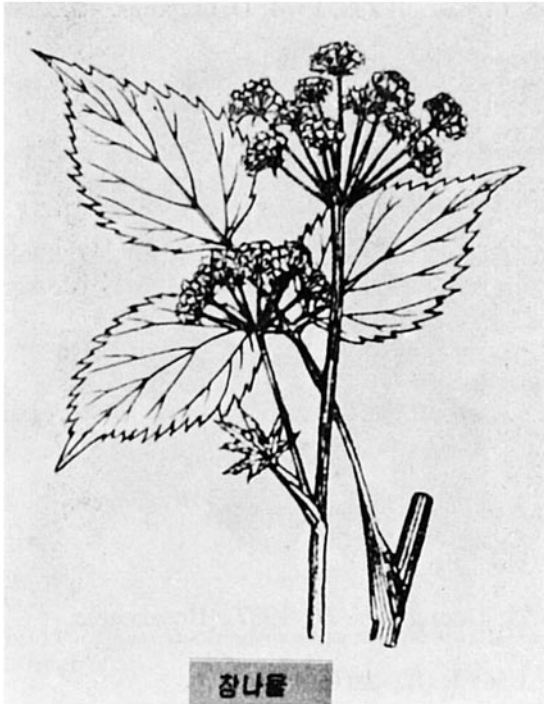


Fig. 12 *Spuriopimpinella calycina* (Maxim.) Kitag. is cultivated as a vegetable for the Korean traditional dish "kimchi"

Spuriopimpinella calycina (Maxim.) Kitag. – Rem.: C. Pyongyang district. Fig. 12.

Tanacetum boreale Fisch. ex DC., Prodr. 6: 128, 1837; Fl. Cor. 6: 284, 1976; Dzungangs. 119, 1987. (Compositae).

Ssuggughoa

Distr.: N. M.

Use: M. (h.), ornamental plant

Thymus quinquecostatus Celak. in Oesterr. Bot. Zeitschr. 39: 263, 1889 var. **japonicus** Hara in Bot. Mag., Tokyo 51: 145, 1937; Fl. Cor. 5: 247, 1975. (Labiatae).

Bacgrihjang

Distr.: M.

Use: M. (h.)

Rem.: O. North Hwanghae, 1987

Trichosanthes kirilowii Maxim. – Rem.: O. Southern North Hwanghae.

Urtica laetevirens Maxim. in Mel. Biol. Acad. Pétersb. 9: 620, 1876; Fl. Cor. 1: 247, 1972; Dzungangs. 77, 1987. (Urticaceae).

Ssoegipul

Distr.: M.

Use: Fi. (st.), M. (l.)

Rem.: C. Southern North Hwanghae. Fig. 13.

Valeriana fauriei Brig. in Ann. Conserv. Bot. Genev. 17: 327, 1914; Fl. Cor. 6: 76, 1976; Dzungangs. 110, 1987. – *Veronica nipponica* Nak. in Rep. First. Sci.

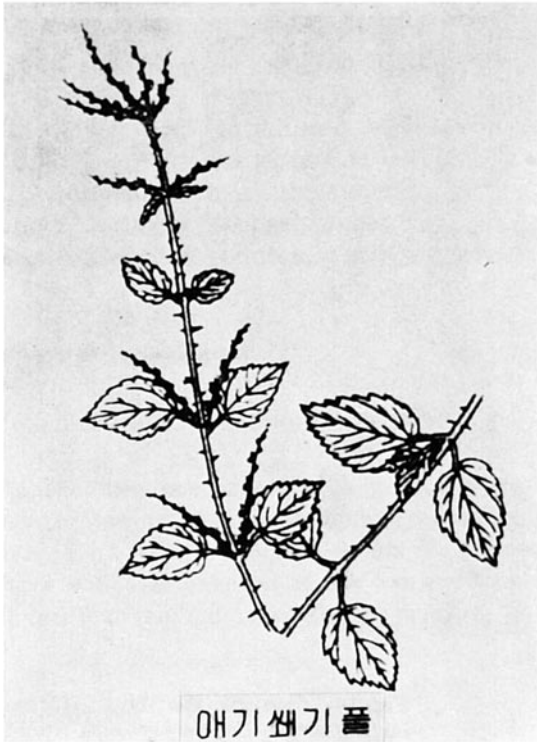


Fig. 13 *Urtica laetevirens* Maxim.,
a medicinal and fibre plant

Exped. Manch. sect. 4: 49, 1936. (Valerianaceae).

Baguninamul, Dzueodzumpul

Distr.: M.

Use: M. (r.)

Valeriana officinalis L., Sp. Pl. 31, 1753; Dzungangs. 110, 1987. (Valerianaceae).

Jagbaguninamul

Distr.: M.

Use: M. (r.), I. (h., perfume)

Veronica sibirica L., Sp. Pl. ed. 2, 12, 1762; Fl. Cor. 5: 310, 1975; Dzungangs. 109, 1987. (Scrophulariaceae).

Naengtscho, Sumwuenamul

Distr.: M.

Use: M. (r.)

Zanthoxylum coreanum Nak. in Bot. Mag., Tokyo 44: 528, 1930; Fl. Cor. 4: 181, 1976; Dzungangs. 49, 1987. — *Z. bungei* Planch. var. *zimmermannii* Rehd. et Wils. in Sarg., Pl. Wils. 2: 122, 1914. (Rutaceae).

Woangtschopinamu

Distr.: M. S.

Use: M., Oi. (fr.), Sp. (l., ba., fr.)

Zizania latifolia (Griseb.) Stapf in Kew Bull. 1909: 385, 1909; Fl. Cor. 7: 178, 1976; Dzungangs. 123, 1987. — *Z. latifolia* Turcz. in Bull. Soc. Nat. Mosc. 1: 105, 1838, nom. nud.; *Hydropyrum latifolium* Griseb. in Ledeb., Fl. Ross. 4: 466, 1853. (Gramineae).

Dzul

Distr.: M.

Use: M. (h.), Fo. (h.)



Fig. 14 One of the best Korean lawn grasses, *Zoysia japonica* Steud.

Zoysia japonica Steud., Synops. 1: 414, 1854; Fl. Cor. 7: 190, 1976; Dzungsangs. 123, 1987. (Gramineae).

Dzandi

Distr.: M.

Use: lawn grass

Fig. 14.

Zoysia tenuifolia Willd. ex Trin. in Mém. Ac. Pétersb., ser. 6, 4 (2): 96, 1836; Cor. 7: 190, 1976; Dzungsangs, 124, 1987. (Gramineae).

Gumdzandi

Distr.: M.

Use: lawn grass

Final remarks

55 species could be included which are neither present in our original list (BAIK et al. 1986) nor in its following additions (HAMMER et al. 1987, HOANG and HAMMER 1988). A decreasing input from our field work was observed. Therefore, we can conclude that in future only a few additional species can be expected. Altogether the lists now contain 454 species. From this figure 259 species have been collected and/or observed by us. Again, the greatest input derived from the group of medicinal plants. This is in accordance with the increased production and use of medicinal herbs in the D. P. R. K. (HAMMER 1988).

Zusammenfassung

Ergänzende Notizen zur Liste der koreanischen Kulturpflanzen (3)

Die weitere Exploration und ergänzende Literaturstudien führten zu neuen Informationen für die Liste der koreanischen Kulturpflanzen (BAIK et al. 1986). 55 Arten wurden neu aufgenommen. Für weitere 24 Arten liegen erstmals Sammlungen und/oder Beobachtungen vor. 9 Arten, die bereits in früheren Jahren beobachtet werden konnten, wurden gesammelt.

Краткое содержание

Дополнительные заметки к списку корейских культурных растений (3)

Дальнейшее исследование и дополнительное изучение литературы привели к новым информационным дополнениям к списку корейских культурных растений (BAIK et al. 1986). 55 видов были включены впервые. Следующие 24 вида были собраны впервые и/или даны к ним наблюдения. В коллекцию были собраны 9 видов, наблюдаемые в предыдущие годы.

Literature

- BAIK MUN-CHAN, HOANG HO-DZUN and K. HAMMER, 1986: A check-list of the Korean cultivated plants. — *Kulturpflanze* **34**, 69–144.
- Dzosonsigmul. see Im (1976)
- Dzungangs. see Im et al. (1987)
- Fl. Cor. and Fl. Cor., Append. — the complete citations are given by BAIK et al. (1986).
- HAMMER, K., 1988: A note on medicinal plants in the Korean People's Democratic Republic. — *Newsletter of Medicinal and Aromatic Plants* 1988, no. 1, 73–74.
- , BAIK MUN-CHAN and HAN UN-XOAN, 1986: Notes on a mission to the Democratic People's Republic of Korea 1985 for the collection of land-races of cultivated plants. — *Kulturpflanze* **34**, 293–304.
- , HAN UN-XOAN and HOANG HO-DZUN, 1987: Additional notes to the check-list of Korean cultivated plants (1). — *Kulturpflanze* **35**, 323–333.
- , O HJONG-GUN and HAN UN-XOAN, 1988: Report on a mission for the collection of plant genetic resources to the Korean Democratic People's Republic, 1987. — *Kulturpflanze* **36**, 465–473.
- , WON DONG-CHOL and HAN UN-XOAN, 1989: Report on a mission for the collection of plant genetic resources in the Democratic People's Republic of Korea, 1988. — *Kulturpflanze* **37**, 391–399.
- HOANG HO-DZUN and K. HAMMER, 1988: Additional notes to the check-list of Korean cultivated plants (2). — *Kulturpflanze* **36**, 291–313.
- IM ROG-DZAE, 1976: *Dzosonsigmuldogam* (Korean illustrated flora). — Goahakwontschulpansa (Publishing House of the Academy of Sciences). — Pyongyang (abbr. **Dzosonsigmul.**).
- , RA UNG-TSCHIL and Go OK-SON, 1987: *Dzungangsigmulwondzaebaesigmul* (Cultivated plants of the Central Botanical Garden). — Goahagbaekgoasadzontschulpansa (Publishing House of the Academy and Encyclopedia). — Pyongyang, 228 pp., 96 plates (abbr. **Dzungangs.**).

- KIM HJON-SAM, K. HAMMER, HAN UN-XOAN, P. HANELT and PAK HJONG-SON, 1987: Missions for the collection of plant genetic resources in the Democratic People's Republic of Korea 1986. — *Kulturpflanze* **35**, 355–365.
- RI JONG-DZAE and HOANG HO-DZUN, 1984: *Sigmulmjongsadzon* (A dictionary of plant names). — *Goahagbaekgoasadzontschulpansa* (Publishing House of the Academy and Encyclopedy). — Pyongyang, 544 pp.
- SCHULTZE-MOTEL, J. (Hrsg.), 1986: *Rudolf Mansfelds Verzeichnis landwirtschaftlich und gärtnerischer Kulturpflanzen*. — Akademie-Verlag, Berlin, 4 vols.

Dr. K. HAMMER
Zentralinstitut für Genetik und Kulturpflanzenforschung
der Akademie der Wissenschaften der DDR
Corrensstraße 3
Gatersleben
DDR - 4325