

## Expression of DNA binding proteins in carrot somatic embryos that specifically interact with a *cis* regulatory element of the French bean phaseolin gene

Mark J. Gultinan,<sup>1,3</sup> John C. Thomas,<sup>2</sup> Craig L. Nessler<sup>1</sup> and Terry L. Thomas<sup>1</sup>

<sup>1</sup>Department of Biology, Texas A&M University, College Station, TX 77843-3258, USA; <sup>2</sup>Biochemistry Department, University of Arizona, Tucson, AZ 85721, USA; <sup>3</sup>Corresponding author; present address; Department of Biology, University of North Carolina, Chapel Hill, NC 27599-3280, USA

Received 14 March 1989; accepted in revised form 19 June 1989

**Key words:** nuclear proteins, embryogenesis, DNA-protein interaction, phaseolin promoter, gel retardation

### Abstract

Nuclear proteins from bean (*Phaseolus vulgaris*) embryos bind specifically to a 55 bp DNA sequence located upstream of the seed storage protein gene phaseolin. This sequence is capable of elevating gene expression in transgenic tobacco plants by as much as 150-fold when fused to a chimeric  $\beta$ -glucuronidase reporter gene. Results presented in this paper demonstrate that nuclear extracts from carrot embryos bind to a phaseolin DNA sequence that includes a phaseolin activator sequence. This specific DNA binding activity is modulated during somatic embryogenesis. Two separable protein species react specifically with the labeled phaseolin DNA fragment (58.0 and 51.7 kDa). These results suggest that the *cis*- and *trans*-acting elements controlling gene expression have been highly conserved during evolution.

**Abbreviations:** bp, base pairs; CAMV, cauliflower mosaic virus; GUS,  $\beta$ -glucuronidase; kDa, kilodalton; SDS-PAGE, sodium dodecyl sulfate-polyacrylamide gel electrophoresis

### Introduction

DNA binding proteins have been shown to associate specifically with promoter elements from many prokaryotic and eukaryotic genes and have been implicated in regulating transcription [17]. The existence of plant DNA binding proteins which interact with DNA upstream of a number of diverse plant genes has been demonstrated [5, 8, 10–11, 15–16, 27]. The *Phaseolus vulgaris* seed storage protein gene, phaseolin, has been shown to be expressed predominately in the seed tissues

of bean, and is correctly expressed in transgenic tobacco plants [20]. A protein factor from bean cotyledon nuclear extracts binds specifically to a 55 bp sequence from the 5' region of this gene [1, 6]. Fusion of this 55 bp DNA sequence 5' of a truncated CaMV promoter and GUS reporter gene resulted in elevated expression of the GUS gene (in seeds, roots and in leaves) when transferred to tobacco plants. Thus, a functional correlation has been made between the protein binding site, and gene activation.

We have investigated the species specificity and

developmental regulation of DNA binding proteins which interact with a phaseolin transcriptional activator fragment using a carrot *in vitro* somatic embryogenesis system. Biochemical quantities of somatic embryo stages, including preglobular, proembryogenic masses, can be isolated from embryogenic carrot cultures [9, 28]. For this reason, carrot somatic embryogenesis has been used as a model for studying the developmental expression profiles of proteins and mRNAs specific to or modulated during embryogenesis [2–4, 12, 22, 24, 25, 28]. In this report, we demonstrate that nuclear protein factors from carrot somatic embryos bind specifically to the same DNA fragment as do immature bean cotyledon nuclear extracts, and that the developmental regulation of this activity is correlated with somatic embryogenesis. We also show that two separable protein species bind to a phaseolin *cis* regulatory element.

## Materials and methods

**DNA binding protein analysis.** Protein extraction and quantitation, DNA manipulations, DNA binding assays, gel retardation analysis and autoradiography were described previously [1, 6, 7, 16].

**Carrot tissue culture.** Conditions for initiation of carrot cultures from sterilized seed grown hypocotyl sections and for the induction of carrot somatic embryogenesis in liquid cultures have been described [26].

**SDS-PAGE.** Proteins were separated by electrophoresis by the method of Laemmli [13] and visualized by silver staining by the method of Oakley *et al.* [19].

**Nuclear protein gel blots.** Nuclear proteins separated by SDS-PAGE were reacted with labelled DNA fragments by the methods of Miskimins *et al.* [18] with modifications as indicated in the legend to Fig. 4.

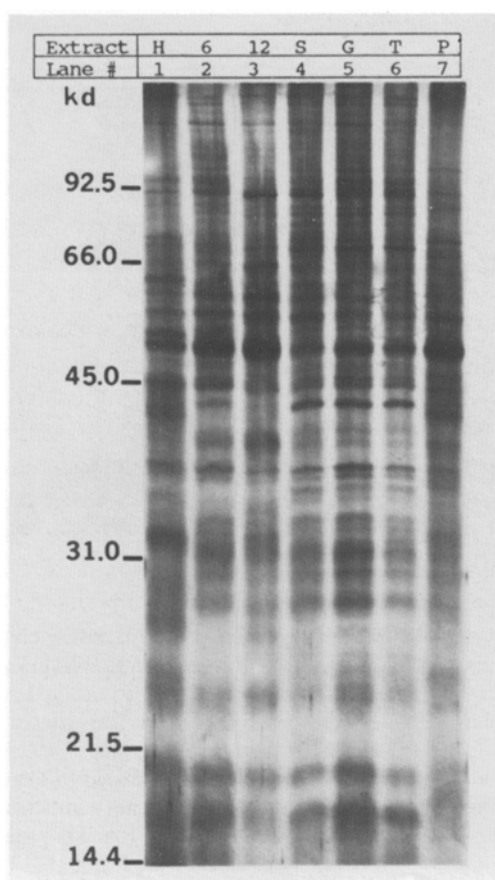
## Results and discussion

### *Extraction of crude nuclear extracts from staged carrot somatic embryos*

Carrot callus cultures were initiated from seed-grown hypocotyl sections on agar solidified media. The resulting calli were introduced into suspension culture after 12 weeks. After 2 additional weeks, the suspensions were transferred to media lacking 2,4-D to initiate somatic embryogenesis. Samples were examined by microscopy to determine the course of embryogenesis. Globular, torpedo and plantlet stages were predominant at 5, 14 and 25 days after transfer, respectively. Samples were obtained from: seed-grown hypocotyls, agar-grown calli at 6 and 12 weeks after induction, cells in suspension grown in the presence of 2,4-D, somatic embryos of globular, torpedo and plantlet stages and leaves of seed-grown plants (H, 6, 12, S, G, T, P and L respectively). Torpedo-staged extracts were previously shown to be enriched for nuclear proteins by western analysis with monoclonal antibodies specific to a rare nucleolar protein, B-36, present in both plant and animal cells [7]. Crude nuclear extracts prepared from these samples were quantitated and examined on silver-stained SDS-PAGE gels (Fig. 1). While overall the profiles of separated proteins are very similar, some marked differences can be observed. For example, two bands with apparent molecular weights of 69.0 and 42.5 kDa are predominant only in the samples representing suspension cultures and globular and torpedo somatic embryo stages (Fig. 1, lanes S, G and T). Several different proteins are abundant in the hypocotyl extracts as well as for the plantlet extracts (Fig. 1, lane H, 63.2 and 41.9 kDa, lane P, 41.3 kDa).

### *Specific binding of nuclear extracts from torpedo-staged embryos to the 402 BH phaseolin 5' fragment*

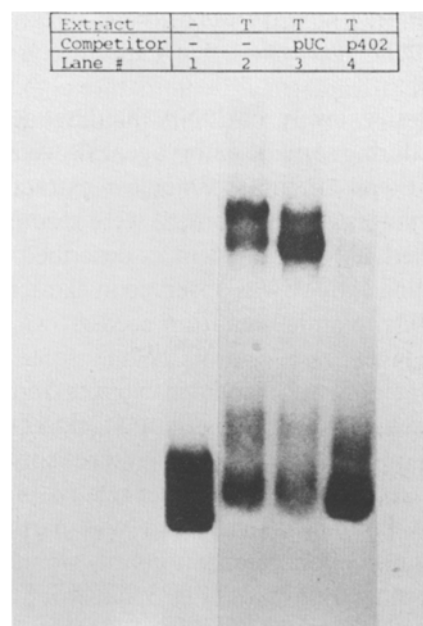
The 402 bp *Bgl* II to *Hha* I DNA fragment (402 BH) from the 5' region of the phaseolin gene 177.4 [21] was isolated and end-labeled as pre-



*Fig. 1.* Nuclear extracts from carrot tissues and embryogenic carrot cultures. Nuclear extracts were quantitated, separated by SDS-PAGE, silver-stained as described in Materials and methods. The extracts were made from: seed-grown hypocotyls, calli at 6 and 12 weeks after induction, suspension cultures, globular and torpedo somatic embryo stages and plantlets germinating from these cultures (H, 6, 12, S, G, T, P, respectively). The molecular weights (in kilodaltons) of standards run on an adjacent lane are indicated on the left.

viously described [1, 6]. This fragment, which is located between  $-783$  to  $-381$  5' of the major CAP site of the phaseolin gene, was shown to bind nuclear proteins from developing bean cotyledons. The labeled 402 BH fragment was incubated with either the nuclear extract from torpedo-staged embryos ( $5 \mu\text{g}$  protein/lane in buffer D) or with buffer D (no protein), in the presence of  $2 \mu\text{g}$  of non-specific competitor DNA (poly-dIdC-poly-dIdC). The mixtures were separated on a non-denaturing polyacrylamide gel.

Autoradiography revealed that while the free probe ran as a single species (Fig. 2, lane 1) incubation with the carrot nuclear extract resulted in two bands of reduced mobility (Fig. 2, lane 2). Competition with unlabeled plasmids was used to assess the specificity of the binding activity. While pUC19 did not compete for the binding (Fig. 2, lane 3), the plasmid p402BH competed efficiently for the binding activity (Fig. 2, lane 4). Plasmid p402BH consists of pUC19 containing the same

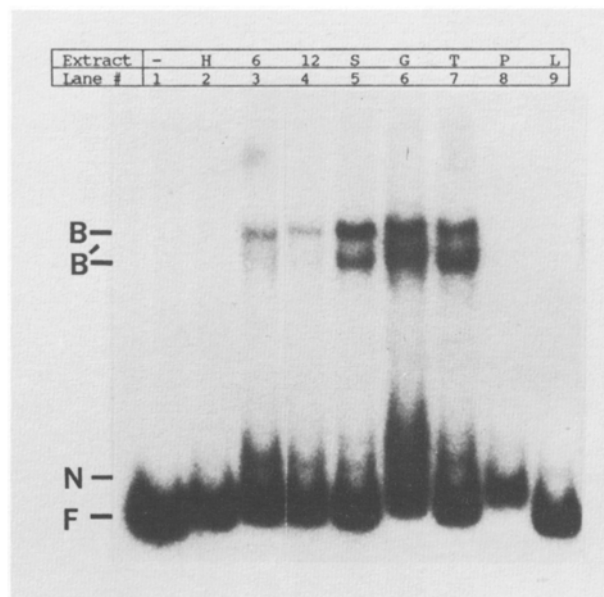


*Fig. 2.* Carrot nuclear extracts interact specifically with the 402 BH DNA fragment from the 5' region of the phaseolin gene. DNA was isolated and end labeled as previously described. Binding reactions ( $20 \mu\text{l}$ ) contained 2000 cpm of DNA,  $2 \mu\text{g}$  of (poly-dIdC-poly-dIdC),  $1 \mu\text{l}$  of binding buffer ( $200 \text{ mM}$  Tris,  $19 \text{ mM}$  NaEDTA,  $7.5 \text{ mM}$  DTT, pH 7.5), either  $5 \mu\text{l}$  of protein ( $1 \mu\text{g}/\mu\text{l}$ ) in buffer D or  $5 \mu\text{l}$  of buffer D alone. Competition experiments were performed by the addition of  $1 \mu\text{g}$  of supercoiled plasmids (pUC19, unspecific; p402BH, specific). Reactions were incubated for 10 min at room temperature,  $1 \mu\text{l}$  of loading dye was added and the products were separated by electrophoresis on a 5% polyacrylamide gel containing  $0.25 \times$  TBE pH 7.5 buffer [16]. Gels were dried and autoradiographed as previously described. Lane 1, 402 BH fragment alone, lane 2, 402 BH fragment with carrot torpedo nuclear extract (T), lane 3, same as 2 with the addition of  $1 \mu\text{g}$  unlabeled pUC19, lane 4, same as lane 2, with the addition of  $1 \mu\text{g}$  unlabeled p402BH.

402 BH fragment used as the labeled probe. Even with five-fold excess of control plantlet- or seed-grown leaf extracts, no binding was observed (data not shown). These results differ from those observed with extracts prepared from bean hypocotyls prepared under different conditions [1]. The carrot globular nuclear extract also binds a 55 bp synthetic oligonucleotide (data not shown) which contains the phaseolin 5' protein binding domain located within the 402 BH fragment [1].

#### *Modulation of DNA binding activity during carrot somatic embryogenesis*

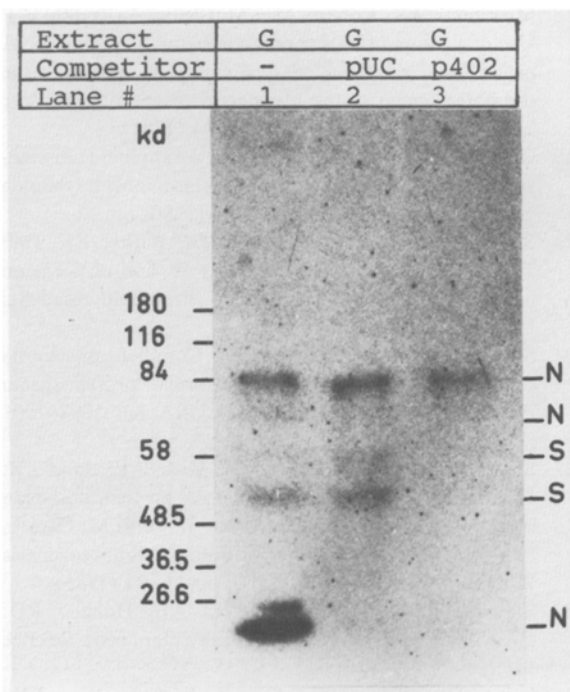
The relative levels of DNA binding activities present during somatic embryogenesis were determined. Equal amounts of nuclear extracts from various stages of development were reacted with the labeled 402 BH fragment as described above. No binding activity was observed in extracts from hypocotyls, plantlets or from seed-grown leaves (Fig. 3, lanes 2, 8 and 9). While some DNA binding activity was evident in extracts from 6 and 12 week calli (Fig. 3, lanes 3 and 4), extracts from suspension-cultured cells, and cultures containing somatic embryos showed higher relative amounts of DNA binding activity; this was particularly true for cultures containing primarily globular and torpedo-staged embryos (Fig. 3, lanes 5, 6 and 7). The observation of low-level DNA binding activity in calli and suspension cultures is consistent with the hypothesis that 2,4-D induces cell proliferation [23] and gene expression programs characteristic of somatic embryogenesis in the absence of morphologically discernible embryos [4, 28]. Further somatic embryo development is inhibited by the presence of 2,4-D [9]. Our observation of increased levels of DNA binding proteins in globular and torpedo-staged embryos is correlated with the progression of embryogenesis upon removal of 2,4-D. Thus the expression of nuclear proteins that bind the phaseolin 5' DNA binding site begins at an early stage of carrot somatic embryogenesis, and increases to a maximum at the globular and torpedo stages.



*Fig. 3.* Developmental regulation of carrot DNA binding proteins. Binding assay was performed as described in Fig. 2. Sources of nuclear extracts are as described in Fig. 1, with the addition of seed-grown carrot leaf nuclear extract (L). Lane 1, labeled 402 BH fragment alone, lanes 2–9, p402 fragment with the various extracts as indicated (6.3  $\mu$ g). F, free fragment; N, non-specific band (does not compete with either pUC19 or p402BH, see also Fig. 2); B and B', specifically bound DNA-protein complexes.

#### *Specific binding of labeled DNA to fractionated protein extracts*

To estimate the molecular weights of the proteins responsible for the DNA binding activity, nuclear extracts were separated by SDS-PAGE, transferred to nitrocellulose and reacted with the nick-translated 402 BH fragment. Five separable species of protein were observed to react with the probe (Fig. 4, lane 1, 78.2, 66.6, 58.0, 51.2 and 26 kDa). To determine the specificity of these reactions, cold competitor DNAs were included (Fig. 4, lanes 2 and 3). The 78.2 kDa species did not compete with either pUC19 or with p402BH plasmid. The 66.6 kDa (a very faint band) and the 26 kDa species competed with both of the plasmids. Therefore, these three species can be considered to react non-specifically with the phaseolin protein binding sequence. Two species



*Fig. 4.* Specific binding of phaseolin 402 BH fragment to carrot nuclear protein gel blots. Proteins were separated by SDS-PAGE and transferred to nitrocellulose. 40  $\mu$ g of extract from globular-stages embryos was run in each lane. Filters were incubated for one hour with gentle shaking in 5% non-fat milk, 10 mM Hepes pH 8.0. Isolated 402 BH DNA fragment was nick-translated according to Maniatis *et al.* [16] to specific activities of  $2 \times 10^8$  cpm/ $\mu$ g. Probe was added to the filters at a final concentration of 106 cpm/ml in 2.5 ml of binding buffer (10 mM Hepes pH 8.0, 0.1 mM NaEDTA, 25 mM NaCl, 1 mM MgCl<sub>2</sub>, 1 mM DTT and 0.25% non-fat milk) and incubated for 1 hour at room temperature with shaking. Filters were washed twice in binding buffer with 0.3 M NaCl for 1 hour each wash, air-dried, and autoradiography was performed as described. Cold competitor DNA (100  $\mu$ g) was added 30 minutes prior to adding labeled probe; lane 2, pUC19 DNA, lane 3, p402BH DNA. The molecular weights (in kilodaltons) of standards run on an adjacent lane are indicated on the left. The positions of reacting species are indicated on the right with either S, for specific binding or N for non-specific binding.

(58.0 and 51.7 kDa) were competed only with the p402BH plasmid, demonstrating their binding specificity with the 5' phaseolin DNA sequence. A 60 kDa protein was identified in nuclear extracts from soybean embryos, which interacts with a DNA sequence from the 5' region of a seed-specific lectin gene using similar methods

[11]. Given the seed-specific expression of the soybean lectin and bean phaseolin genes and the sequence similarity of the protein binding sites 5' of the genes [1, 6], it is possible that the 58 kDa protein from carrot and the 60 kDa protein from soybean are evolutionary related.

#### Concluding remarks

We have demonstrated that carrot somatic embryos express DNA binding protein(s) which are capable of interacting specifically with a DNA sequence from the phaseolin seed storage protein gene. Since this DNA sequence has been shown to act as a transcriptional activator in transgenic tobacco plants, the carrot DNA binding proteins identified in this study may be involved in the regulation of gene expression during embryogenesis.

#### Acknowledgements

This research was supported by grant DCB 8602497 to Timothy C. Hall, whom we thank for supporting the research of M.J.G.

#### References

1. Bustos MM, Guiltinan MJ, Jordano J, Begum D, Kalkan FA, Hall TC: Regulation of GUS expression in transgenic tobacco plants by an A/T-rich *cis*-acting sequence found upstream of a French bean  $\beta$ -phaseolin gene. *The Plant Cell* (1989) in press.
2. Choi JC, Liu L, Borkird C, Sung ZR: Cloning of genes developmentally regulated during plant embryogenesis. *Proc Natl Acad Sci USA*: 84: 1906–1910 (1987).
3. Cyr RJ, Bustos MM, Guiltinan MJ, Fosket DE: Developmental modulation of tubulin protein and mRNA levels during somatic embryogenesis in cultured carrot cells. *Planta* 171: 365–376 (1987).
4. De Vries S, Booij H, Meyerink P, Huisman G, van Spanje M, Wilde HD, Thomas TL, van Kammen A: Acquisition of embryogenic potential in carrot cell suspension cultures. *Planta* 176: 196–204 (1988).
5. Ferl RJ, Nick HS: *In vivo* detection of regulatory factor binding sites in the 5' flanking region of maize Adh. 1. *J Biol Chem* 262: 7947–7950 (1987).

6. Guiltinan MJ, Klassy RC, Hall TC: Functional analysis of a protein binding domain from the 5' region of the phaseolin gene. The second international congress of Plant Molecular Biology: abs. 46 (1988).
7. Guiltinan MJ, Schelling ME, Ehtesham NZ, Thomas JC, Christensen ME: The nucleolar RNA-binding protein B-36 is highly conserved among plants. *Eur J Cell Biol* 46: 547–553 (1988).
8. Green PJ, Kay SA, Chua N-H: Sequence-specific interactions of a pea nuclear factor with light-responsive elements upstream of the *rbc-S3A* gene. *EMBO J* 6: 2543–2549 (1987).
9. Halperin W: Alternative morphogenetic events in cell suspensions. *Am J Bot* 53: 443–453 (1966).
10. Jensen EO, Marcker KA, Schell J, Bruijn FJ: Interaction of a nodule specific trans-acting factor with distinct DNA elements in the soybean leghaemoglobin *lbc3* upstream region. *EMBO J* 7: 1265–1271 (1988).
11. Jofuku KD, Okamoto JK, Goldberg RB: Interaction of an embryo DNA binding protein with a soybean lectin gene upstream region. *Nature* 328: 734–737 (1997).
12. Keller GL, Nikolau BJ, Ulrich TH, Wurtele ES: Comparison of starch and ADP-glucose pyrophosphorylase levels in nonembryogenic cells and developing embryos from induced carrot cultures. *Plant Physiol* 86: 451–456 (1988).
13. Laemmli UK: Cleavage of structural proteins during the assembly of the head of bacteriophage T4. *Nature* 227: 680–685 (1970).
14. Maier UG, Brown JWS, Toloczki C, Feix G: Binding of a nuclear factor to a consensus sequence in the 5' flanking region of zein genes from maize. *EMBO J* 6: 17–22 (1987).
15. Maier UG, Brown JWS, Schmitz LM, Schwall M, Dietrich G, Feix G: Mapping of tissue-dependent and independent protein binding sites to the 5' region of a zein gene. *Mol Gen Genet* 212: 241–245 (1988).
16. Maniatis T, Fritsch EF, Sambrook J: *Molecular Cloning: A Laboratory Manual*. Cold Spring Harbor Laboratory, Cold Spring Harbor, NY (1982).
17. Maniatis T, Goodbourn S, Fischer FA: Regulation of inducible and tissue-specific gene expression. *Science* 236: 1237–1245 (1987).
18. Miskimins WK, Roberts MP, McClellan A, Ruddle FH: Use of a protein-blotting procedure and a specific DNA probe to identify nuclear proteins that recognize the promoter region of the transferrin receptor gene. *Proc Natl Acad Sci USA* 82: 6741–6744 (1985).
19. Oakley BR, Kirsh DR, Morris NR: A simplified ultrasensitive silver stain for detecting proteins in polyacrylamide gels. *Anal Biochem* 105: 361–363 (1980).
20. Sengupta-Gopalan C, Reichert NA, Barker RF, Hall TC: Developmentally regulated expression of the bean  $\beta$ -phaseolin gene in tobacco seed. *Proc Natl Acad Sci USA* 82: 3320–3324 (1985).
21. Slightom JL, Sun SM, Hall TC: Complete nucleotide sequence of a French bean storage protein gene: Phaseolin. *Proc Natl Acad Sci USA* 80: 1897–1901 (1983).
22. Smith JA, Choi JH, Krass MA, Karu AE, Sung ZR: Monoclonal antibodies that recognize proteins unique to somatic embryos of *Daucus carota*. In Terzi M, Pitto L, Sung ZR (eds) *Proceedings of Somatic Embryogenesis Workshop* (San Miniato, Italy), pp. 86–94 (1985).
23. Steward FC, Mapes MO, Kent AE, Holsten RD: Growth and development of cultured plant cells. *Science* 143: 20–27 (1964).
24. Sung ZR, Okimoto R: Embryonic proteins in somatic embryos of carrots. *Proc Natl Acad Sci USA* 78: 3683–3687 (1981).
25. Sung ZR, Okimoto R: Coordinate gene expression during somatic embryogenesis in carrot. *Proc Natl Acad Sci USA* 80: 2661–2665 (1983).
26. Thomas JC, Guiltinan MJ, Thomas TT, Nessler C: *Agrobacterium tumefaciens* transformation of *Daucus carota* hypocotyl sections. *Plant Molecular Biology* (1989) in press.
27. Werr W, Springer B, Schurmann J, Bellman R: Multiple interactions between nuclear proteins of *Zea mays* and the promoter of the *Shrunken* gene. *Mol Gen Genet* 212: 342–350 (1988).
28. Wilde HD, Nelson WS, Booij H, De Vries S, Thomas TL: Gene expression programs in embryogenic carrot cultures. *Planta* 176: 205–211 (1988).