

Chapter 12

Domestication Loci Controlling Panicle Shape, Seed Shattering, and Seed Awning

Takashige Ishii and Ryo Ishikawa

Abstract Cultivated rice (*Oryza sativa* L.) was domesticated from the Asian wild species, *Oryza rufipogon* Griff. Among morphological differences between them, one of the striking traits specific to cultivated rice is loss of seed shattering. In the early stage of rice domestication, the related traits of this character have been desirable for the ancient seed gatherers because it enhances the efficiency of seed collection. In this chapter, we propose that three morphological traits, closed panicle shape, non-seed shattering, and seed awning, played important roles in controlling the degree of seed dispersal. First, we reviewed domestication loci controlling the three traits. We then evaluated allele effects at these loci using reciprocal backcross populations between *O. sativa* Nipponbare and our standard wild accession of *O. rufipogon* W630. In the genetic background of cultivated rice, all the wild functional alleles were responsible for these domestication traits. On the other hand, cultivated non-functional alleles were not always associated with the drastic morphological changes in the genetic background of wild rice. Since ancient humans have selected cultivated-type mutants in natural wild populations, possible domestication process for the emergence of cultivated rice is discussed based on the effects of cultivated non-functional alleles.

Keywords Domestication · *Oryza rufipogon* · Panicle spreading · Seed shattering · Seed awning

12.1 Introduction

Cultivated rice (*Oryza sativa* L.) was domesticated from the Asian wild species, *Oryza rufipogon* Griff (Fig. 12.1) (Oka 1988). Several distinct morphological differences are observed between them, of which one of the striking traits specific

T. Ishii (✉) · R. Ishikawa
Laboratory of Plant Breeding, Graduate School of Agricultural Science, Kobe University,
Kobe, Japan
e-mail: tishii@kobe-u.ac.jp



Fig. 12.1 Asian wild rice, *Oryza rufipogon*. This wild species is commonly found in swampy and deepwater areas in tropical Asian countries

to cultivated rice is loss of seed shattering. The related traits of this character have been desirable for the ancient seed gatherers because they enhance the efficiency of seed collection. When planting what they had harvested started, artificial selection was imposed on the shattering-related traits of rice plants. Therefore, it is considered that reduction of the seed-shattering degree is required in the early phase of domestication (Flannery 1973; Harlan et al. 1973; Fuller 2007).

Compared with cultivated rice, wild rice produces spikelets with long awns (bristle-like organs in the tip of the lemma) on spreading panicles (Fig. 12.2), and the seeds mature from top to bottom of the panicle. About 2 weeks after flowering, an abscission layer is completely formed between the pedicel and spikelet, and the seeds shed by themselves. Open panicle shape and long awns also enhance dispersal of mature seeds. Recently, we found a simple morphological change in panicle shape had a large impact on the seed-shedding behavior of wild rice (Fig. 12.3) (Ishii et al. 2013). In the maturing stage, wild rice plants with a cultivated-type closed panicle had significantly reduced seed shedding. There was a tendency to retain the upper mature seeds on the panicles through support from long awns in the lower immature seeds. In addition, the long awns in closed panicles inhibited the free exposure of anthers and stigmas on the flowering spikelets, resulting in a significant reduction in the outcrossing rate. These observations suggest that closed panicle shape and long awns played important roles in seed-shedding and pollinating behaviors during the early stage of rice domestication. We do not know the exact historical sequence of rice domestication, but three traits, i.e., closed panicle shape, non-seed shattering, and seed awning are closely associated with the emergence of cultivated rice. In this chapter, the genetic mechanisms of these three domestication traits are reviewed and discussed.

Fig. 12.2 Panicles of cultivated rice, *O. sativa*, and Asian wild rice, *O. rufipogon*. Wild rice has awned spikelets and spreading panicles

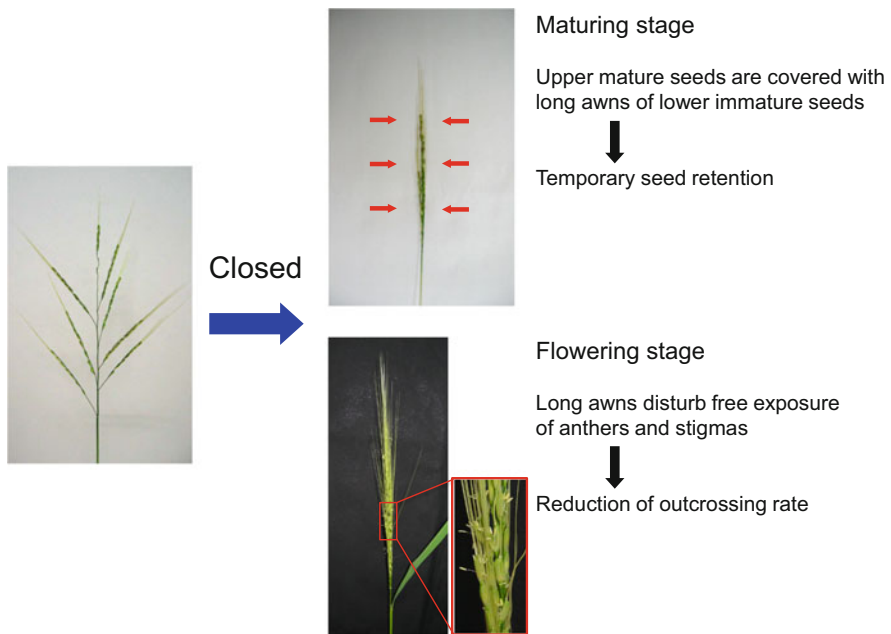


Fig. 12.3 A simple morphological change of panicle shape has a big impact on seed-shattering and pollinating behaviors of wild rice. Closed panicles in wild rice cause temporary seed retention in the maturing stage and reduction of outcrossing rate in the flowering stage

12.2 A Locus Responsible for Panicle Spreading

Panicles of cultivated rice are closed, whereas most Asian wild rice have spreading panicles. The morphological differences in panicles between cultivated and wild rice are mainly explained by a single locus, *SPR3* (*spreading panicle-3*), where wild rice has the dominant allele for spreading panicles (Eiguchi and Sano 1990).

To examine morphological and genetic mechanisms of panicle structure, we previously investigated two plant materials, a cultivar of *O. sativa* Nipponbare (with closed panicles) and a wild accession of *O. rufipogon* W630 (with spreading panicles) (Ishii et al. 2013). The panicle shape of the cultivated and wild accessions is formed at the basal structure in the primary branches. At the cellular level, *O. rufipogon* W630 has tissue resembling a bump between the main and primary branches (Fig. 12.4). To confirm the chromosomal location of the panicle-spreading locus, we performed quantitative trait locus (QTL) analysis using 161 BC₂F₈ plants between *O. sativa* Nipponbare (recurrent parent) and *O. rufipogon* W630 (donor parent). One strong QTL corresponding to *SPR3* was detected on the long arm of chromosome 4, which explained 80.1% of the phenotypic variance. Further fine mapping narrowed down the location of *SPR3* to a 9.3-kb region. Although no coding sequences were predicted in this region, complementation tests showed that the region regulates the rice *LIGULELESS1* gene (*OsLGI*), Locus ID Os04g0656500 in the Rice Annotation Project (RAP) Database (Fig. 12.5, Table 12.1). *OsLGI* is located 10 kb away from the *SPR3* locus and encodes a *SQUAMOSA* promoter binding protein (SBP) domain (Lee et al. 2007).

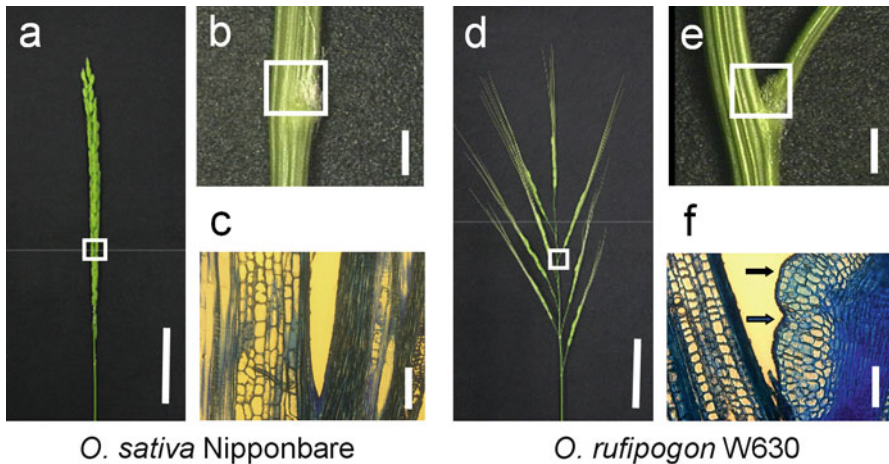


Fig. 12.4 Panicles of *O. sativa* Nipponbare (a–c) and *O. rufipogon* W630 (d–f) (Modified from Ishii et al. 2013). (a, d) Panicles in the heading stage. Scale bar, 5 cm. (b, e) Basal structure of the primary branches indicated by white boxes in (a, d). Scale bar, 1 mm. (c, f) Longitudinal sections of the basal parts of primary branches indicated by white boxes in (b, e). Arrows show the bump structure tissue. Scale bar, 100 μ m

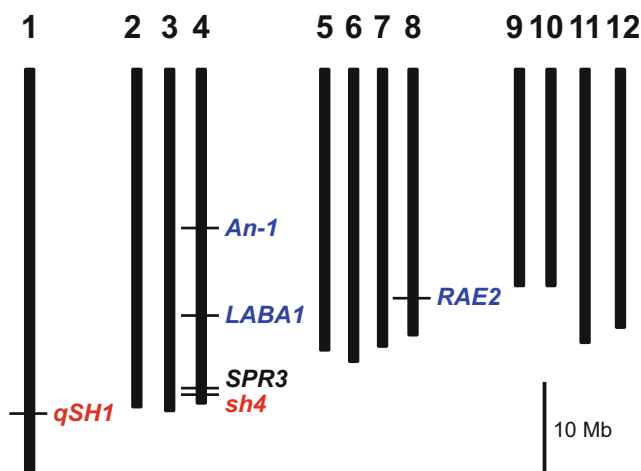


Fig. 12.5 Chromosomal positions of loci for panicle spreading (*SPR3* in black), seed shattering (*sh4* and *qSH1* in red), and seed awning (*An-1*, *LABA1*, and *RAE2* in blue). Their physical positions are after the Rice Annotation Project Database (IRGSP-1.0)

Furthermore, it controls lamina joint and ligule development. The physical position is about 33.49 Mb on chromosome 4 according to the RAP Database. This gene was also named *OsSPL8*, one of the SBP-box genes in rice (Yang et al. 2008). In the basal parts of primary branches, higher levels of *OsLGI* expression were observed in *O. rufipogon* W630 than in *O. sativa* Nipponbare (Ishii et al. 2013). In addition, overexpression of *OsLGI* has been reported to induce the spreading panicle phenotype in transgenic lines (Zhu et al. 2013). Since the panicle phenotypes corresponded to the expression levels of *OsLGI*, we concluded that the *SPR3* region contained the regulatory sequences of *OsLGI* expression in the basal parts of the primary branches.

12.3 Allele Effects at Panicle-Spreading Locus

Among the 161 BC₂F₈ plants between *O. sativa* Nipponbare and *O. rufipogon* W630 used in the above QTL analysis, all the plants having wild W630 alleles at *SPR3* had spreading panicles. This demonstrates that wild alleles are responsible for panicle spreading in the genetic background of cultivated rice. We developed separately an introgression line that contained a chromosomal segment from *O. sativa* Nipponbare at the *SPR3* region in the genetic background of *O. rufipogon* W630. This line had closed panicles with no bump structure tissue

Table 12.1 Domestication loci controlling panicle spreading, seed shattering, and seed awning

Trait	Locus	Chr.	Physical location ^a (Mb)	Mutated region	Responsible gene locus ID ^a	Description ^a	References
Panicle spreading	<i>SPR3</i>	4	33.49	Regulatory region of <i>OsLGI</i>	Os04g0656500	Similar to Squamosa-promoter binding-like protein 3	Ishii et al. (2013)
Seed shattering	<i>sh4</i>	4	34.23	Coding region	Os04g0670900	Homeodomain-like containing protein	Li et al. (2006)
	<i>qSH1</i>	1	36.45	Regulatory region of <i>OsRPL</i>	Os01g0848400	BEL1-type homeobox family	Konishi et al. (2006)
Seed awning	<i>An-1</i>	4	16.73	Coding region	Os04g0350700	Basic helix-loop-helix protein	Luo et al. (2013)
	<i>LABAI</i>	4	25.96	Coding region	Os04g0518800	Cytokinin synthesis enzyme	Hua et al. (2015)
	<i>RAE2</i>	8	23.99	Coding region	Os08g0485500	Epidermal patterning factor-like 1 protein	Bessho-Uehara et al. (2016)

^aAfter the Rice Annotation Project Database (IRGSP-1.0)

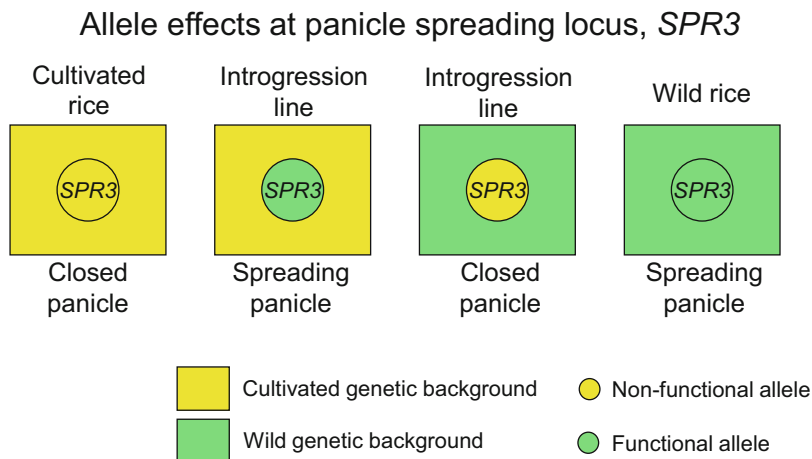


Fig. 12.6 Schematic representation of allele effects at panicle-spreading locus, *SPR3*, in the cultivated and wild genetic backgrounds

at the base of the primary branches, indicating that closed panicle shape is simply generated by a loss-of-function mutation at *SPR3*. The effects of the non-functional cultivated and functional wild alleles at *SPR3* are shown in Fig. 12.6. We therefore infer that ancient humans may have selected closed panicle plants with the non-functional allele at *SPR3* in natural wild populations.

12.4 Closed Panicle Influences Seed-Shedding and Outcrossing Behaviors in Wild Rice

To evaluate the effects of the closed panicle on seed-shedding and outcrossing behaviors in wild rice, the introgression line containing the Nipponbare allele in the genetic background of *O. rufipogon* W630 was produced (Ishii et al. 2013). For seed-shedding behavior, a seed-gathering experiment using the introgression line and *O. rufipogon* W630 was carried out in the field. Since both plants display a seed-shattering habit, their seeds were collected directly from the panicles by hand in the maturing stage, and seed-gathering rates were calculated. Significantly, more seeds (mean gathering rate = 30.6%) were collected from the introgression line than the wild parental accession of *O. rufipogon* W630 (19.8%), indicating that seeds could be gathered more efficiently from the closed panicles (Ishii et al. 2013). Furthermore, to confirm that the plants with closed panicles can retain mature seeds longer than those with open panicles, days from flowering to seed shedding were evaluated with the introgression line and the wild parent. A significant difference was observed for the average days between the introgression line (14.8 days) and *O. rufipogon* W630 (13.8 days). This indicates that plants with closed panicles

could retain mature seeds for about 1 day longer than those with open panicles and explains why mature seeds were efficiently collected from the plants with closed panicles.

The outcrossing rates between the introgression line and two wild lines of *O. rufipogon* W630 were also examined (Ishii et al. 2013). All plant material displayed a similar wild morphology, except for the closed panicles observed in the introgression line. Outcrossing rates of the two wild lines were 10.24% and 11.71%, whereas that for the introgression line was 2.82%. A significant reduction in outcrossing rate was caused by a single non-functional allele at *SPR3* which changed panicle structure from open to closed. This morphological change may have a big impact on pollination behavior during rice domestication.

12.5 Loci Responsible for Seed Shattering

Wild rice, *O. rufipogon*, has strong seed-shattering behavior that guarantees propagation success through seed dispersal under natural condition. A wide variation in seed-shattering degree is also observed among cultivated rice, *O. sativa*, suggesting that seed shattering is a quantitatively regulated trait. Two loci, *sh4* and *qSH1*, were reported to have a strong influence on the shattering habit (Konishi et al. 2006; Li et al. 2006). The *sh4* is located on the long arm of chromosome 4 with a physical position of about 34.23 Mb (just 0.74 Mb distal to *SPR3* locus) (Fig. 12.5, Table 12.1). It was detected as a major QTL for seed shattering between *O. rufipogon* and *O. sativa* Indica and explains 69% of the total phenotypic variance in their segregating populations. A gene responsible for *sh4* encodes a Myb-type transcription factor (Locus ID Os04g0670900). An allele with a loss-of-function mutation was found to inhibit the establishment of the abscission layer at flower development stage (Li et al. 2006). Since the loss-of-function mutation is commonly observed in cultivated rice, it is widely accepted that the mutation played an important role in rice domestication (Lin et al. 2007; Onishi et al. 2007; Zhang et al. 2009).

The other major QTL is *qSH1*, which was identified on chromosome 1 (ca. 36.45 Mb) using a segregating population between *O. sativa* Indica Kasalath and Japonica Nipponbare (Konishi et al. 2006) (Fig. 12.4, Table 12.1). A causative mutation at *qSH1* was shown to be an SNP located 12 kb upstream of the rice homolog of the *Arabidopsis* *REPLUMLESS* (*RPL*) gene for dehiscence zone formation in the *Arabidopsis* silique. It belongs to the BEL1-type homeobox family (Locus ID Os01g0848400). The Nipponbare allele causes the reduction of rice *RPL* gene expression, resulting in the complete absence of abscission layer formation. This causative mutation is attributed to selection for the strong non-shattering behavior of Japonica cultivars.

12.6 Allele Effects at Seed-Shattering Loci

In both studies on seed-shattering loci, the functional alleles were found to be responsible for the formation and development of an abscission layer between the pedicel and spikelet in the genetic background of the cultivars (Konishi et al. 2006; Li et al. 2006).

We evaluated allele effects at these two loci using reciprocal backcross populations between *O. sativa* Japonica Nipponbare (with non-functional alleles) and our standard wild accession of *O. rufipogon* W630 (with functional alleles) (Ishikawa et al. 2010). We define the degree of seed shattering into three categories: non-seed shattering, weak seed shattering (mature seeds can be detached by hand gripping), and seed shattering (no mature seeds remained on the panicles). In the genetic background of Nipponbare, both wild alleles at *sh4* and *qSH1* generated plants with weak seed-shattering behavior (Fig. 12.7). These plants retain mature seeds on the panicles unless external force, such as hand gripping, is added. Strong seed shattering was observed in plants having wild alleles at both *qSH1* and *sh4*. In the genetic background of wild rice, effects of the Nipponbare alleles were also examined (Fig. 12.7). It was serendipitous that the backcross plants having the Nipponbare alleles at either shattering locus (*qSH1* or *sh4*) shed all seeds. This

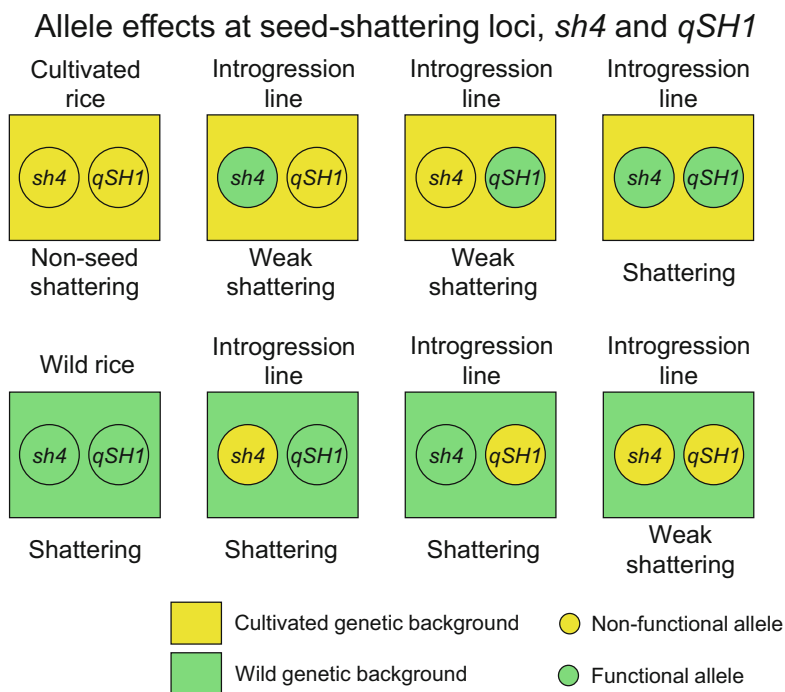


Fig. 12.7 Schematic representation of allele effects at seed-shattering loci, *sh4* and *qSH1*, in the cultivated and wild genetic backgrounds

suggests that a non-functional allele at *qSH1* or *sh4* does not contribute to non-seed shattering in the genetic background of wild rice. The plants having the Nipponbare alleles at both *qSH1* and *sh4* retained mature seeds on the panicles; however, the seeds easily detached by hand tapping. This also confirms that non-shattering behavior is not obtained by a single mutation at these loci in the genetic background of wild rice. Probably, some other loci are still associated with non-shattering behavior of cultivated rice.

12.7 Loci Responsible for Seed Awning

Of the wild propagation-related traits, seed awning directly enhances seed dispersal together with seed-shattering behavior. The major seed-shattering loci have already been identified (Konishi et al. 2006; Li et al. 2006), whereas those for seed awning have been well-characterized only in the past few years. The first reported locus was *Awn-1* (*An-1*) on chromosome 4 with the physical position of about 16.73 Mb in the RAP Database (Luo et al. 2013) (Fig. 12.5, Table 12.1). It was identified as a major QTL explaining 52% of the total phenotypic variance in the segregating population between *O. rufipogon* (long awn) and *O. sativa* (awnless). The responsible gene encodes a basic helix-loop-helix transcription factor (Locus ID Os04g0350700). In general, two types of mutations at the locus were observed among cultivars. Most Japonica cultivars have a transposon insertion in the promoter region, whereas most Indica cultivars possess a 1-bp deletion in the second exon which leads to a premature stop codon.

Another identified locus is *long and barbed awn1* (*LABA1*) being located on chromosome 4 in the region of about 25.96 Mb, which encodes a cytokinin-activating enzyme (Locus ID Os04g0518800) (Hua et al. 2015) (Fig. 12.5, Table 12.1). This locus is associated with the transition from long barbed awns in wild rice to short barbless in Indica rice. A frame-shift 1-bp deletion in the coding region causes a premature stop codon and reduces the cytokinin concentration in awn primordia. This loss-of-function mutation is mainly observed in barbless Indica and tropical Japonica cultivars.

A *regulator of awn elongation 2* (*RAE2*) locus regulates awn elongation in association with the *epidermal patterning factor-like* protein (Bessho-Uehara et al. 2016) (Fig. 12.5, Table 12.1). The locus ID is Os08g0485500 being located in the region of about 23.99 Mb on chromosome 8. In the second exon, a highly variable GC-rich region was found to harbor multiple independent mutations in cultivated rice plants. The RAE2 proteins are mainly classified into three types according to the number of cysteine residues: 4C, 6C, and 7C types. Of these, 6C is a functional type in wild rice, and putatively dysfunctional 4C and 7C types are mainly observed in Japonica and Indica cultivars, respectively.

Two loci of *Awn-2* (*An-2*) and *grain number, grain length, and awn development 1* (*GAD1*) were independently reported to be responsible for awn development (Gu et al. 2015; Jin et al. 2016). The *An-2* and *GAD1* loci are identical to *LABA1* and *RAE2*, respectively.

12.8 Allele Effects at Seed-Awning Loci

We first performed QTL analysis for seed awning using 161 BC₂F₈ plants between *O. sativa* Nipponbare (recurrent parent without awns) and our standard wild accession of *O. rufipogon* W630 (donor parent with long awns). Two strong QTLs were detected on chromosomes 4 and 8 (Ikemoto et al. 2017). Subsequent causal mutation survey and fine mapping confirmed that they are identical to *An-1* and *RAE2* loci, respectively. Regarding *LABA1*, no QTL was detected in the chromosomal region near the locus. This was expected because Nipponbare has a functional allele at *LABA1* just like other wild rice accessions (Hua et al. 2015). We then developed two backcross populations with reciprocal genetic backgrounds of Nipponbare and W630 to examine the allele effects and interactions at major seed-awning loci, *An-1* and *RAE2*.

Awn length in wild rice varied among seeds even in the same plant. We noticed that the seed (or spikelet) position in a panicle affected awn length. Since wild rice exhibits seed-shattering behavior, awn lengths of *O. rufipogon* W630 were compared with the five upper spikelets on the top primary branch just after heading (Ikemoto et al. 2017). The results show that the second spikelet had a significantly shorter awn than the others, and the first and the third followed with similar values (Fig. 12.8). The fifth spikelet always gave a longer awn than the fourth on the same primary branches. Therefore, in this study, the gene effects and interactions were evaluated based on the awn length of the fifth spikelet which generates the longest awn among the five.

A BC₃F₂ population segregated at *An-1* and *RAE2* was produced from the BC₂F₈ plants in the genetic background of Nipponbare to investigate gene interaction. In the BC₃F₂ population, we selected introgression plants with three combinations of genotypes on wild alleles, namely, wild homozygotes at single or both awning loci. Their awn lengths were measured based on spikelet position and compared with the parental accessions (Ikemoto et al. 2017). About half-length awns were observed in the plants having wild alleles at *An-1* (40% in length compared to the wild) and *RAE2* (51%). This suggests their wild alleles had awning effects in the genetic background of Nipponbare (Fig. 12.9). Additive effects were detected in the plants having wild alleles at both loci, and these produced awns whose length was about 78% of the W630 lengths.

In the genetic background of wild rice, allele effects of Nipponbare were examined using the other BC₃F₂ backcross population between *O. sativa* Nipponbare (donor parent) and *O. rufipogon* W630 (recurrent parent). Surprisingly, the plants having Nipponbare non-functional alleles at *RAE2* showed almost the

Fig. 12.8 Panicle and spikelet morphology of *O. rufipogon* W630. (a) A panicle of *O. rufipogon* W630. A white box indicates the top primary branch in the panicle. (b) Spikelets from the top primary branch of *O. rufipogon* W630. They were arranged according to their positions from the top (first to fifth spikelets). Scale bar, 5 cm



Allele effects at seed-awning loci, *An-1* and *LABA1*

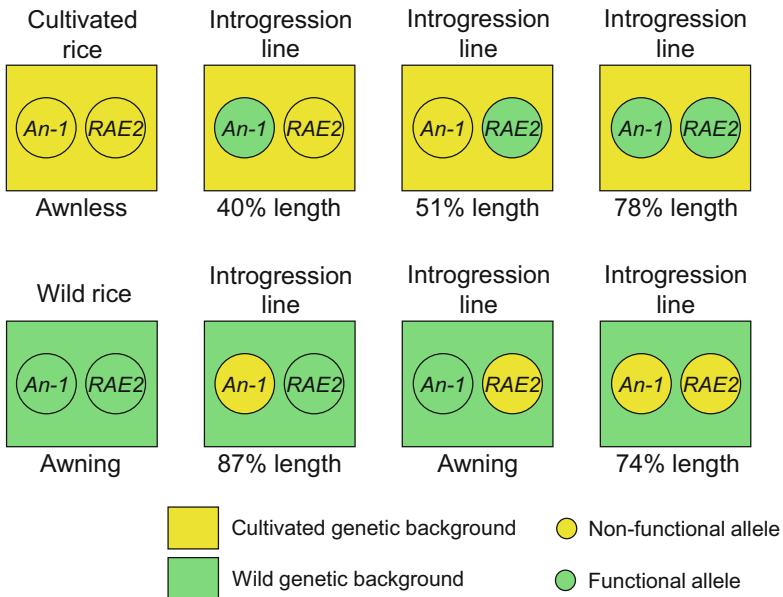


Fig. 12.9 Schematic representation of allele effects at seed-awning loci, *An-1* and *LABA1*, in the cultivated and wild genetic backgrounds

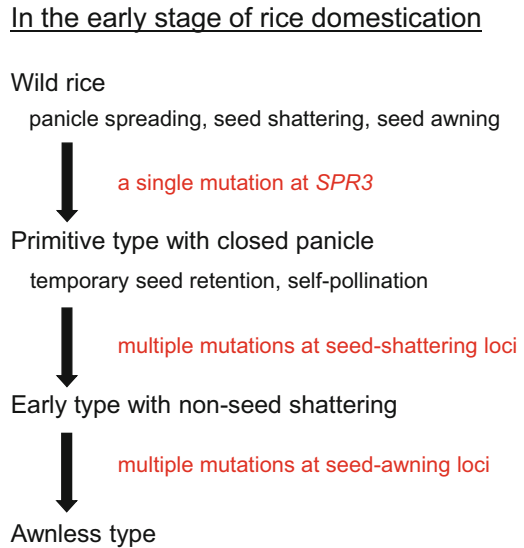
same awn lengths as those of W630 (Fig. 12.9). This suggests that the substitution of the non-functional alleles at *RAE2* did not contribute to length reduction at all. But it was observed that the plants with Nipponbare alleles at *An-1* had significantly shorter awns where the length reduction rate was approximately 13%. Even the plants having the Nipponbare non-functional alleles at both loci produced long awns (corresponding to about 74% of the W630 lengths). These results show that more loci other than *An-1* and *RAE2* are expected to contribute to awnlessness in the genetic background of wild rice.

12.9 Possible Domestication Process for the Emergence of Cultivated Rice

Loss of seed shattering is a key trait for the emergence of cultivated rice, because it enhanced the efficiency of seed collection by ancient seed gatherers. However, it is difficult to find non-shattering plants among wild rice populations. Non-shattering plants are easily eliminated under natural conditions due to their lower propagation ability. In addition, the appearance of non-shattering behavior probably requires independent mutations at multiple seed-shattering loci in the genetic background of wild rice. On the other hand, the temporary inhibition of seed shedding can be obtained through a simple morphological change in panicle shape. Wild rice has spikelets with long awns and spreading panicles, but a single mutation at *SPR3* produces plants with closed panicles. They tend to retain mature seeds a little longer on the panicles with the support from the long awns of immature seeds. After maturity, all the seeds are shed without changing their wild propagation ability. Therefore, a closed panicle may be a first key trait in the development of cultivated rice (Fig. 12.10).

Furthermore, the long awns in closed panicles disturb the free exposure of anthers and stigmas on the flowering spikelets, resulting in a significant reduction of the outcrossing. This morphological change of the panicles promotes self-pollinating behavior and fixation of genes and may assist in the accumulation of homozygous alleles of recessive mutations on seed shattering. Once non-seed-shattering plants are generated in the early stage of rice domestication, seed awning may have been an undesirable trait during harvesting and rice-processing activities. Although seed awning in the genetic background of wild rice is under complex control, an awnless phenotype may be gradually generated by the accumulation of recessive alleles at seed-awning loci.

Fig. 12.10 Possible domestication process for the emergence of cultivated rice



12.10 Perspective

Wild rice keeps many functional alleles at propagation-related loci to survive under natural condition, whereas cultivated rice has accumulated loss-of-function mutations at these loci. In rice domestication, the ancient humans selected desirable mutant plants in the wild natural populations. Therefore, to investigate the transition of the domestication traits, the effects of non-functional cultivated alleles should be examined in the wild genetic background. The non-functional alleles are not always associated with the drastic morphological changes, because many other wild genes are generally involved in the trait expression. Studies on gene interaction at multiple domestication loci in the wild genetic background will give good clues to elucidate the process of rice domestication.

Acknowledgments We thank Dr. Cristina Castillo, University College London, UK, for her critical reading and editing of the manuscript. The seeds of wild rice accession, *O. rufipogon* W630, were kindly provided by the National Institute of Genetics (National Bioresource Project), Japan. This work was supported in part by a Grant-in-Aid from Japanese Society for Promotion of Science (nos. 26292004 and 26450003).

References

- Bessho-Uehara K, Wang DR, Furuta T et al (2016) Loss of function at RAE2, a previously unidentified EPFL, is required for awnlessness in cultivated Asian rice. *Proc Natl Acad Sci USA* 113:8969–8974
- Eiguchi M, Sano Y (1990) A gene complex responsible for seed shattering and panicle spreading found in common wild rices. *Rice Genet Newslett* 7:105–107
- Flannery KV (1973) The origins of agriculture. *Annu Rev Anthropol* 2:271–310
- Fuller DQ (2007) Contrasting patterns in crop domestication and domestication rates, recent archaeobotanical insights from the Old World. *Ann Bot* 100:903–924
- Gu B, Zhou T, Luo J et al (2015) *An-2* encodes a cytokinin synthesis enzyme that regulates awn length and grain production in rice. *Mol Plant* 8:1635–1650
- Harlan JR, de Wet JMJ, Price EG (1973) Comparative evolution of cereals. *Evolution* 27:311–325
- Hua L, Wang DR, Tan L et al (2015) *LABA1*, a domestication gene associated with long, barbed awns in wild rice. *Plant Cell* 27:1875–1888
- Ikemoto M, Otsuka M, Thanh PT et al (2017) Gene interaction at seed-awning loci in the genetic background of wild rice. *Genes Genet Syst* 92:1–6
- Ishii T, Numaguchi K, Miura K et al (2013) *OsLGI* regulates a closed panicle trait in domesticated rice. *Nat Genet* 45:462–465
- Ishikawa R, Thanh PT, Nimura N et al (2010) Allelic interaction at seed-shattering loci in the genetic backgrounds of wild and cultivated rice species. *Genes Genet Syst* 85:265–271
- Jin J, Hua L, Zhu Z et al (2016) *GAD1* encodes a secreted peptide that regulates grain number, grain length and awn development in rice domestication. *Plant Cell* 28:2453–2463
- Konishi S, Izawa T, Lin SY et al (2006) An SNP caused loss of seed shattering during rice domestication. *Science* 312:1392–1396
- Lee J, Park JJ, Kim SL et al (2007) Mutations in the rice liguleless gene result in a complete loss of the auricle, ligule, and laminar joint. *Plant Mol Biol* 65:487–499
- Li C, Zhou A, Sang T (2006) Rice domestication by reducing shattering. *Science* 311:1936–1939
- Lin Z, Griffith ME, Li X et al (2007) Origin of seed shattering in rice (*Oryza sativa* L.). *Planta* 226:11–20
- Luo J, Liu H, Zhou T et al (2013) *An-1* encodes a basic helix-loop-helix protein that regulates awn development, grain size, and grain number in rice. *Plant Cell* 25:3360–3376
- Oka HI (1988) Origin of cultivated rice. Elsevier, Amsterdam
- Onishi K, Takagi K, Kontani M et al (2007) Different patterns of genealogical relationships found in the two major QTLs causing reduction of seed shattering during rice domestication. *Genome* 50:757–766
- Yang Z, Wang X, Gu S et al (2008) Comparative study of SBP-box gene family in Arabidopsis and rice. *Gene* 407:1–11
- Zhang LB, Zhu Q, Wu ZQ et al (2009) Selection on grain shattering genes and rates of rice domestication. *New Phytol* 184:708–720
- Zhu Z, Tan L, Fu Y et al (2013) Genetic control of inflorescence architecture during rice domestication. *Nat Commun* 4:2200