



Sang Gyun Kim

## Contents

|      |                     |     |
|------|---------------------|-----|
| 11.1 | Type I EGC.....     | 212 |
| 11.2 | Type IIa EGC.....   | 214 |
| 11.3 | Type IIb EGC.....   | 217 |
| 11.4 | Type IIc EGC.....   | 222 |
| 11.5 | Type III EGC.....   | 234 |
| 11.6 | Mixed-Type EGC..... | 237 |
| 11.7 | AGC-Like EGC.....   | 241 |
|      | References.....     | 242 |

EGC is divided into three types, and the Type II is more divided into a to c [1–3]. Type I is a protruded lesion which mimics polyp. The height of Type I lesion is more than that of the closed cups of biopsy forceps (2.5 mm), which is a discriminating point from Type IIa. Type IIa is a superficial elevated lesion no more than 2.5 mm in height. Type IIb is a flat lesion which shows a subtle irregular mucosal nodularity or discoloration. Type IIc is a superficial depressed lesion without ulcer, whereas the Type III is an excavated ulcer. Mixed type can exist such as Type IIa + IIc, in which the former is the major feature and the latter is the minor.

Type IIc is the most common type, and Types IIa, IIb, III, and I follow.

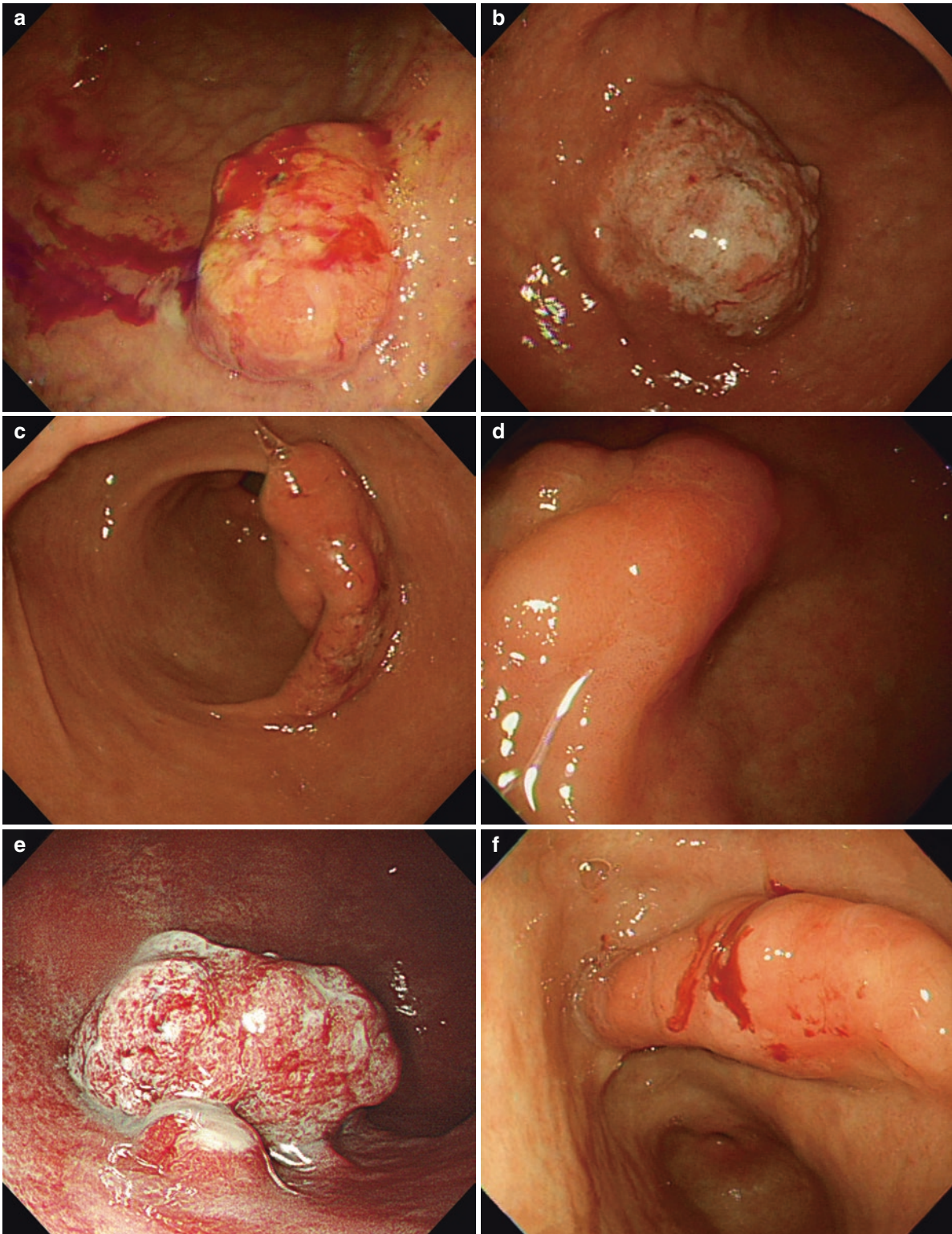
---

S. G. Kim  
Department of Internal Medicine, Liver Research Institute,  
Seoul National University College of Medicine,  
Seoul, South Korea

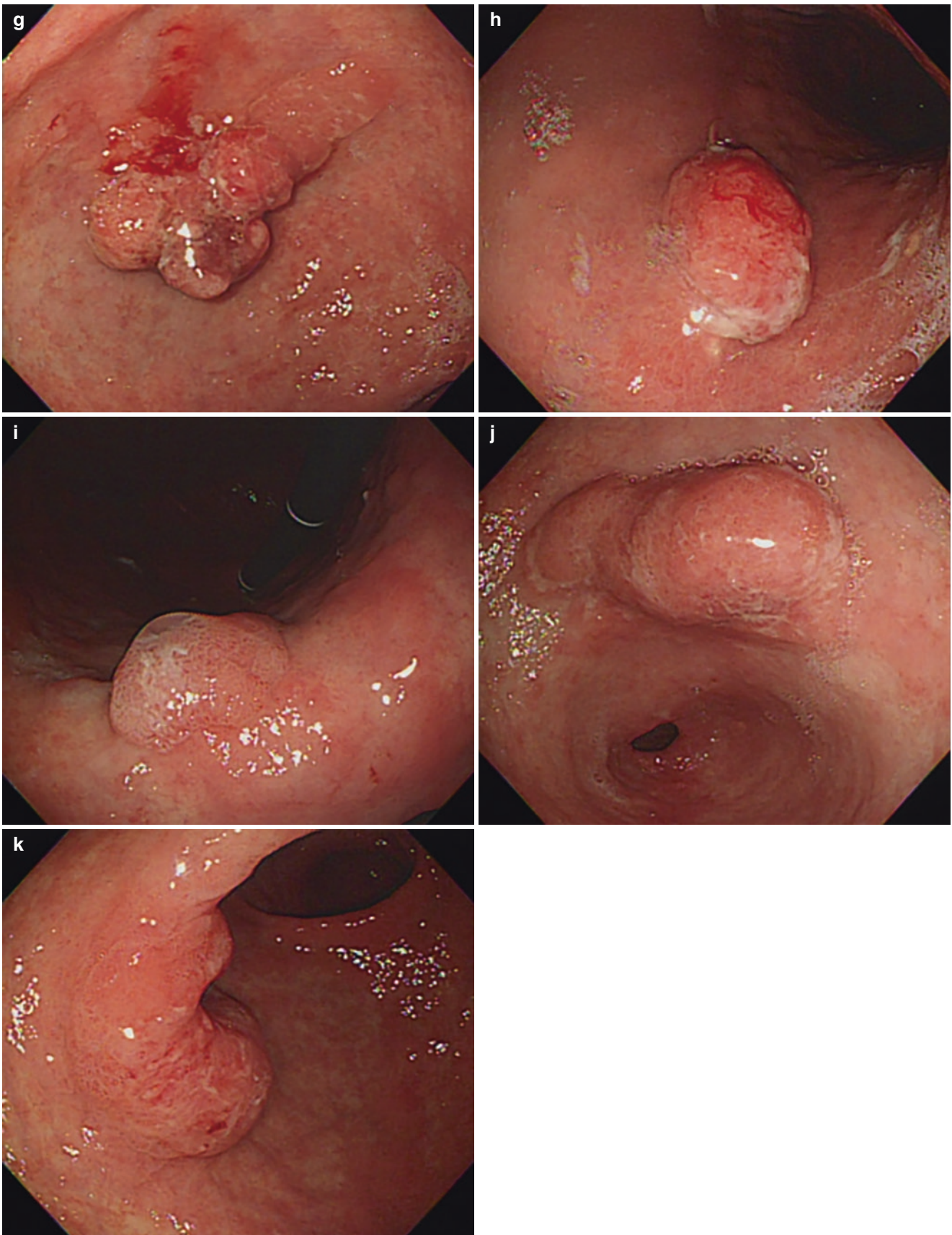
## 11.1 Type I EGC

Type I represents a protruded, polypoid lesion. The height of tumor is more than 2.5 mm, which is comparable with the height of the closed cups of a biopsy forceps. Erosion

or hemorrhage can be accompanied on the mucosal surface. Type I EGC is discriminated from AGC in terms of no evidence of mass effect or infiltration with wide base which suggests tumor invasion beyond the submucosa (Fig. 11.1).



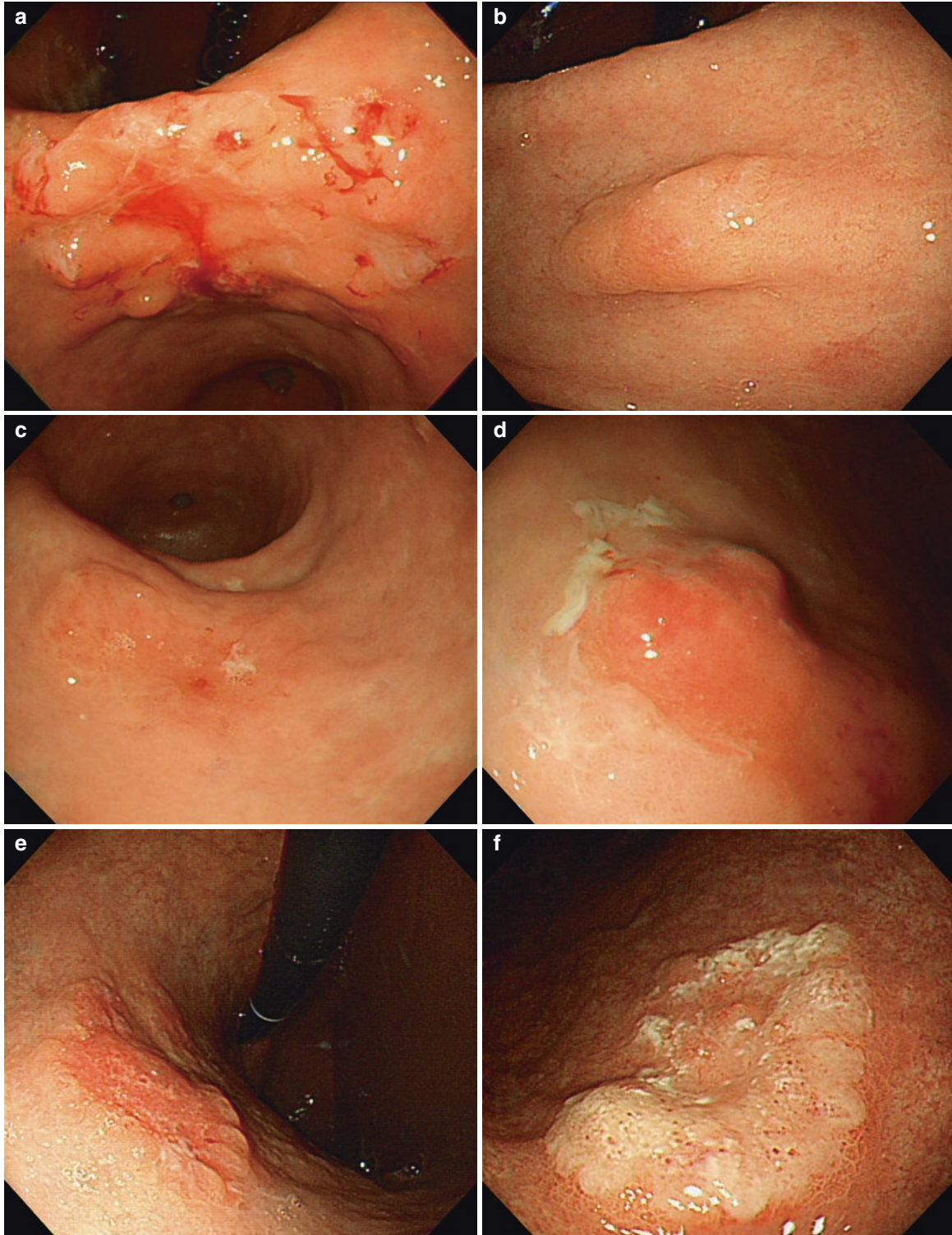
**Fig. 11.1** Typical cases of Type I EGC. A protruded, polypoid lesion without a mass effect or infiltration with wide base which suggests tumor invasion beyond the submucosa



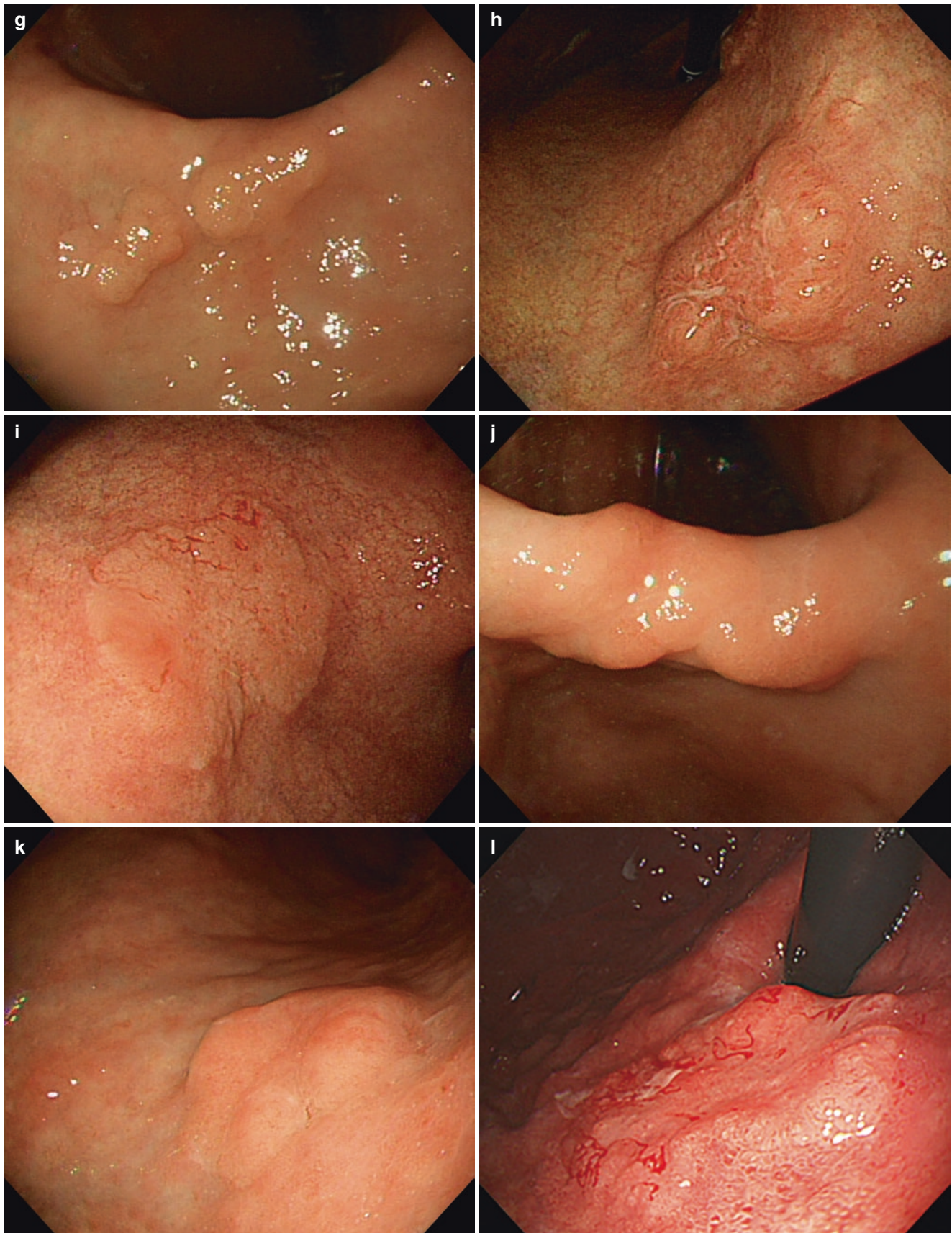
**Fig. 11.1** (continued)

## 11.2 Type IIa EGC

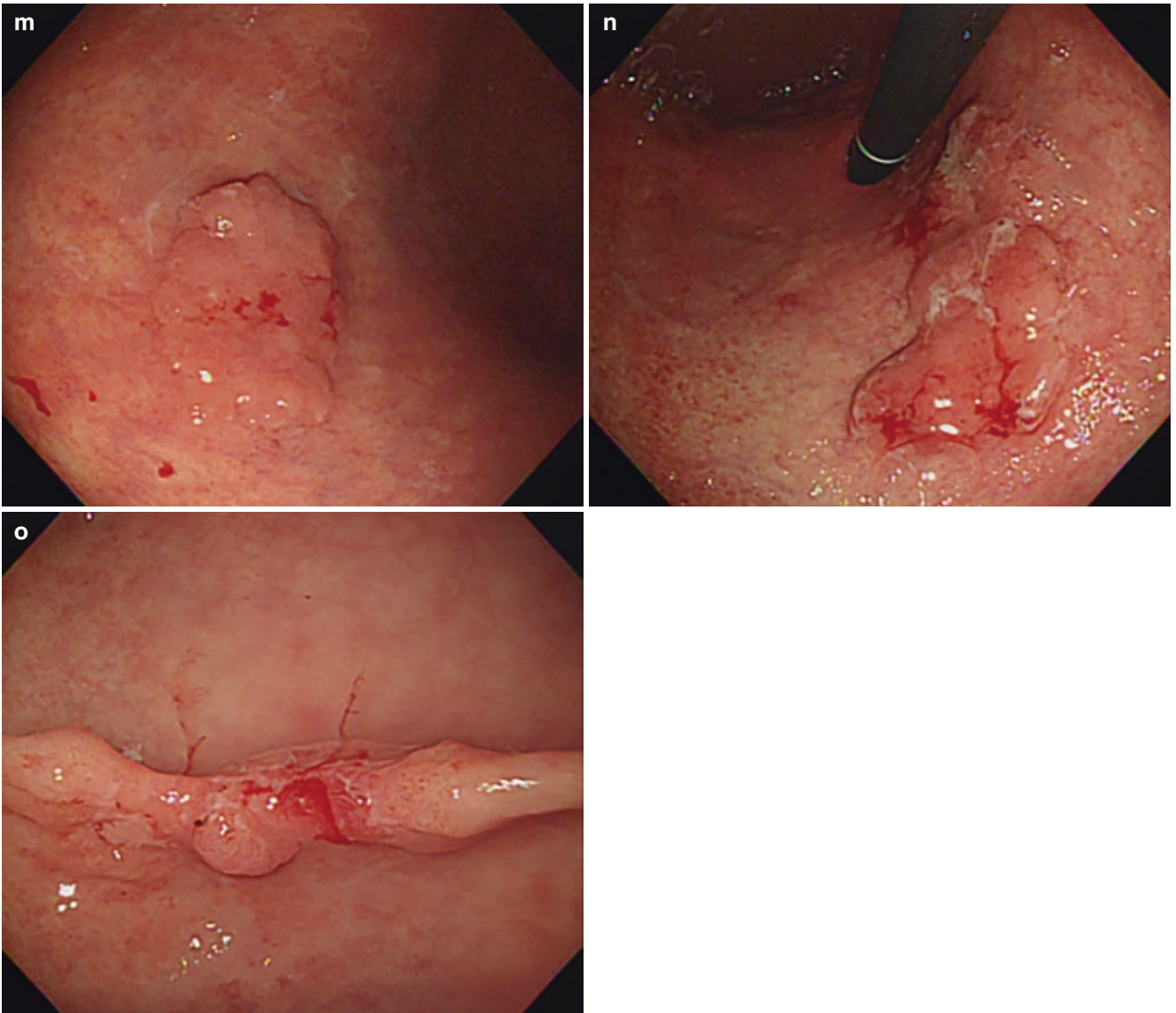
Type IIa is a superficial elevated lesion of which the height is not more than 2.5 mm. The surface is granular, friable, or hyperemic. The margin can be not distinct, and the exudate or hemorrhage can be accompanied (Fig. 11.2).



**Fig. 11.2** Typical cases of Type IIa EGC. Various surface erosions or mucosal changes can be accompanied in flat elevated lesion



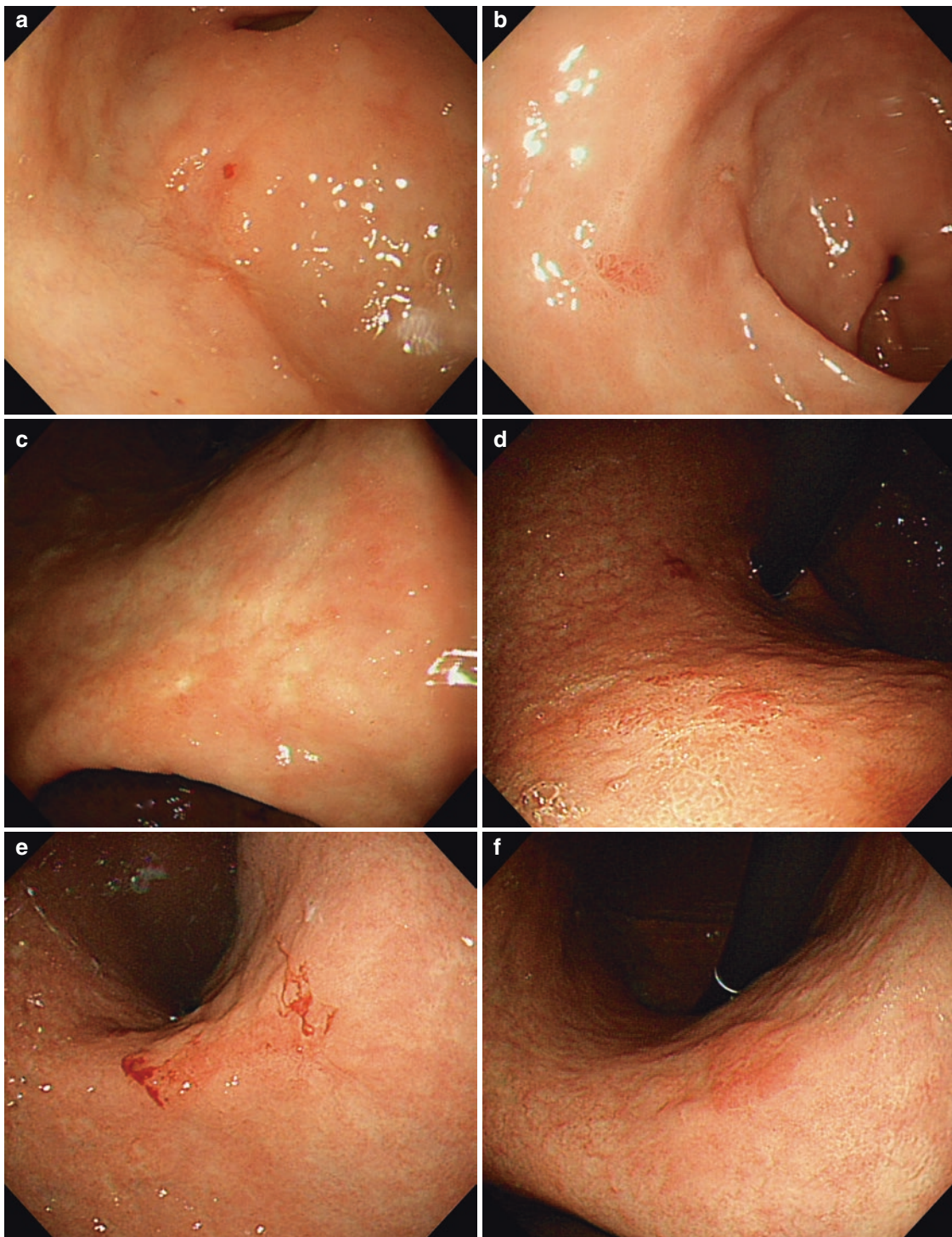
**Fig. 11.2** (continued)



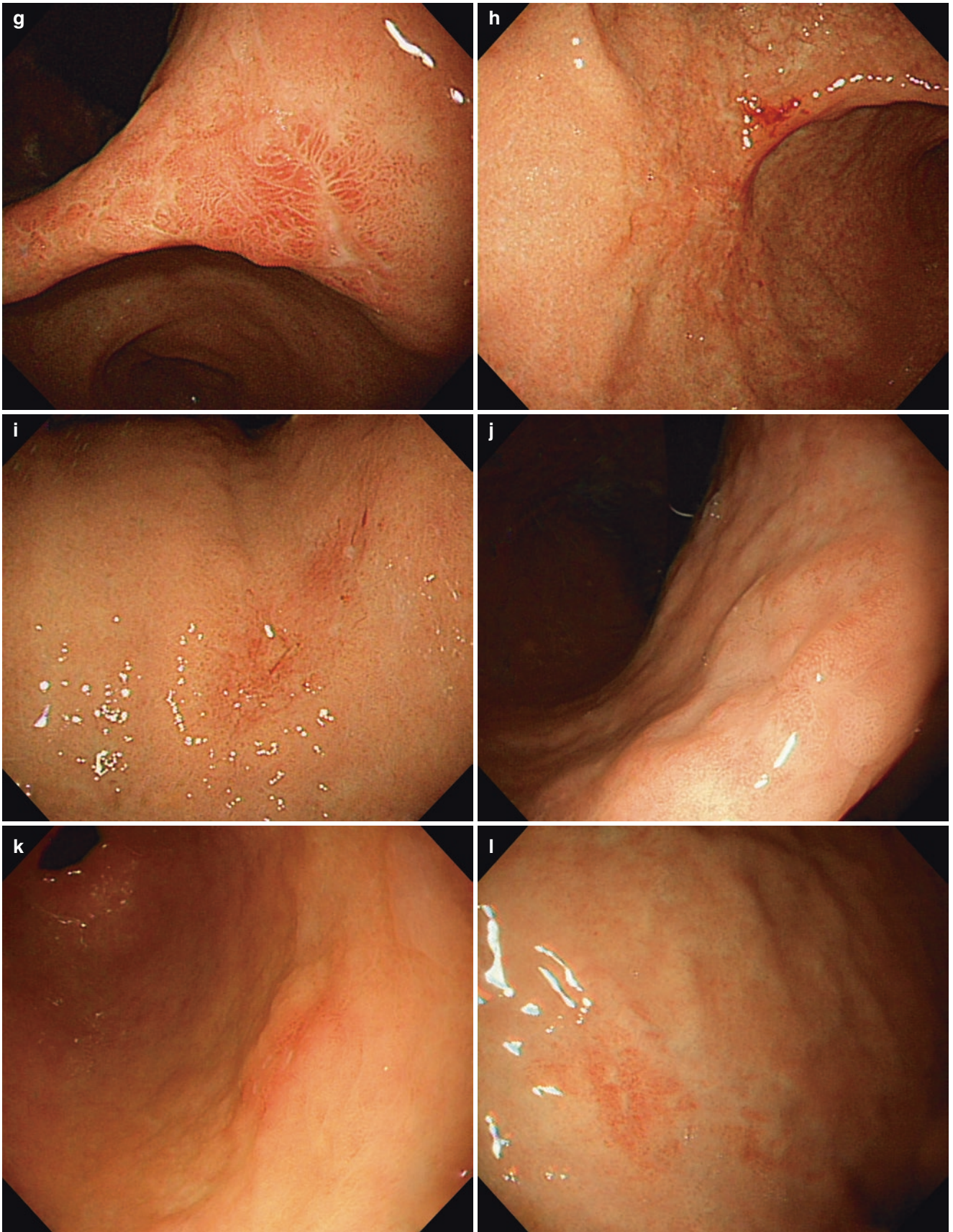
**Fig. 11.2** (continued)

### 11.3 Type IIb EGC

Type IIb is a flat lesion without evident elevated mass or depressed ulcer. Ill-defined mucosal irregularity, subtle nodular change, irregular ulcer scar, irregular vascular ectasia, and discoloration are the major endoscopic findings (Fig. 11.3).

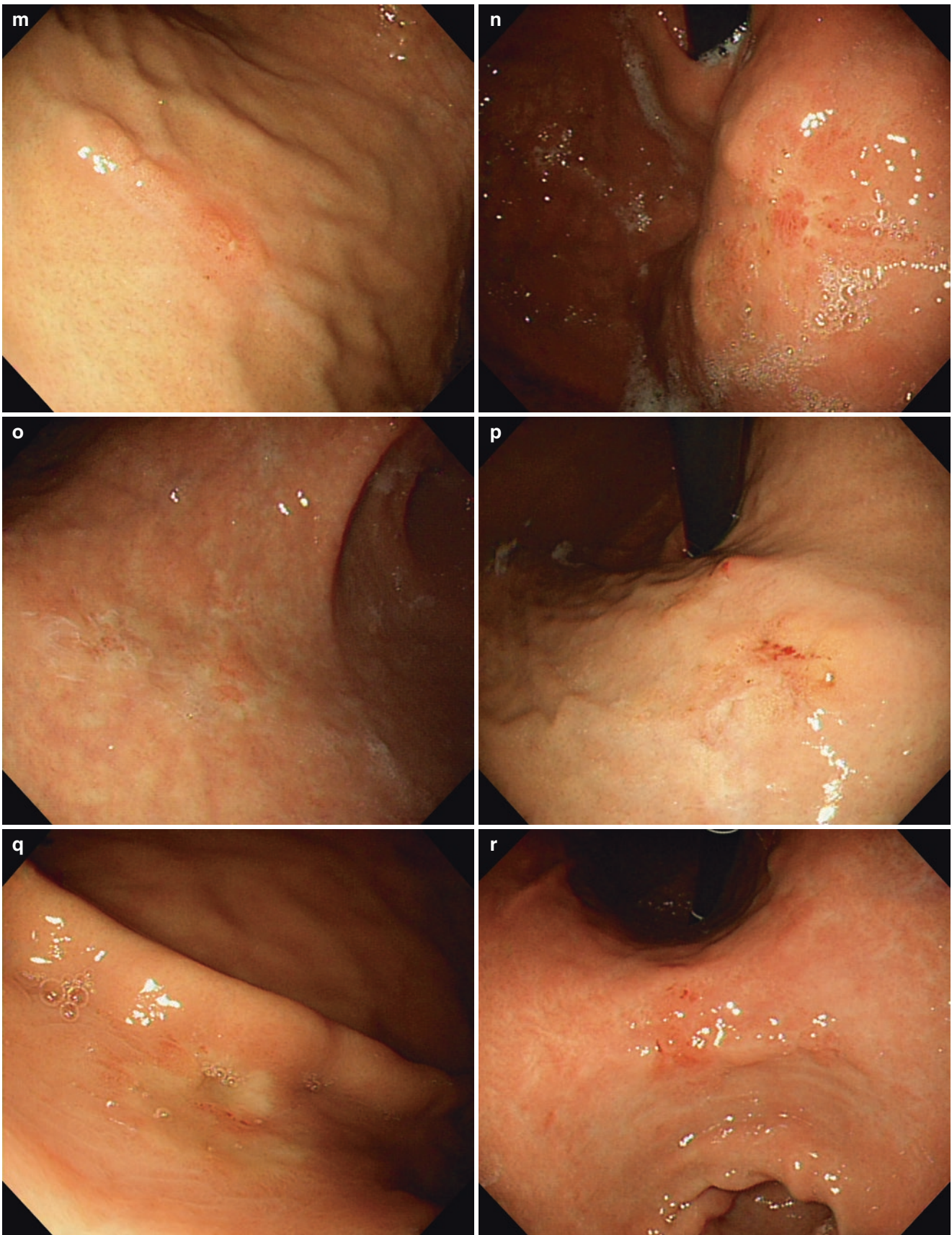


**Fig. 11.3** Typical Type IIb EGC. Irregular surface granularity, scar change, hyperemia, and discoloration are the most common findings in Type IIb EGC



**Fig. 11.3** (continued)





**Fig. 11.3** (continued)

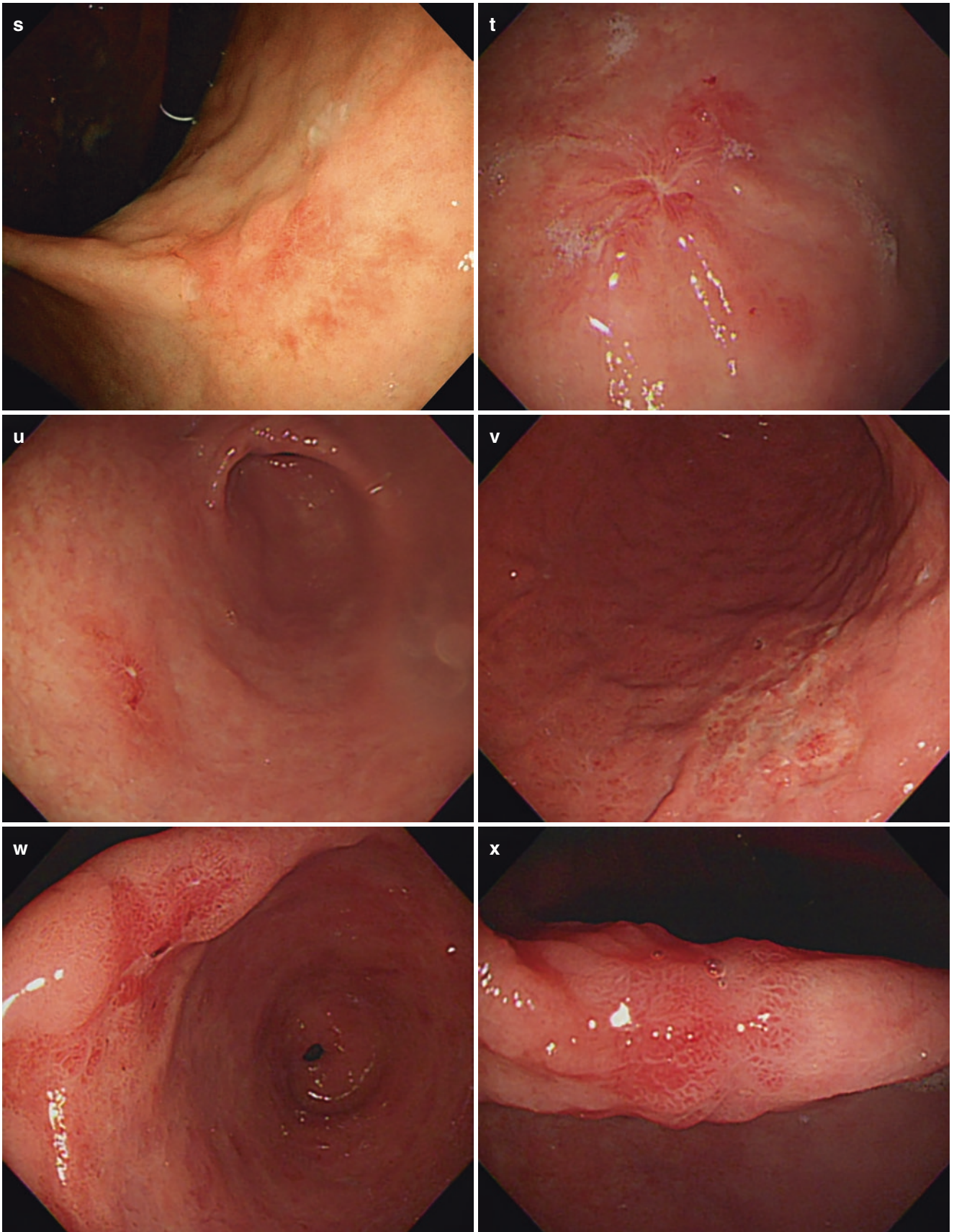
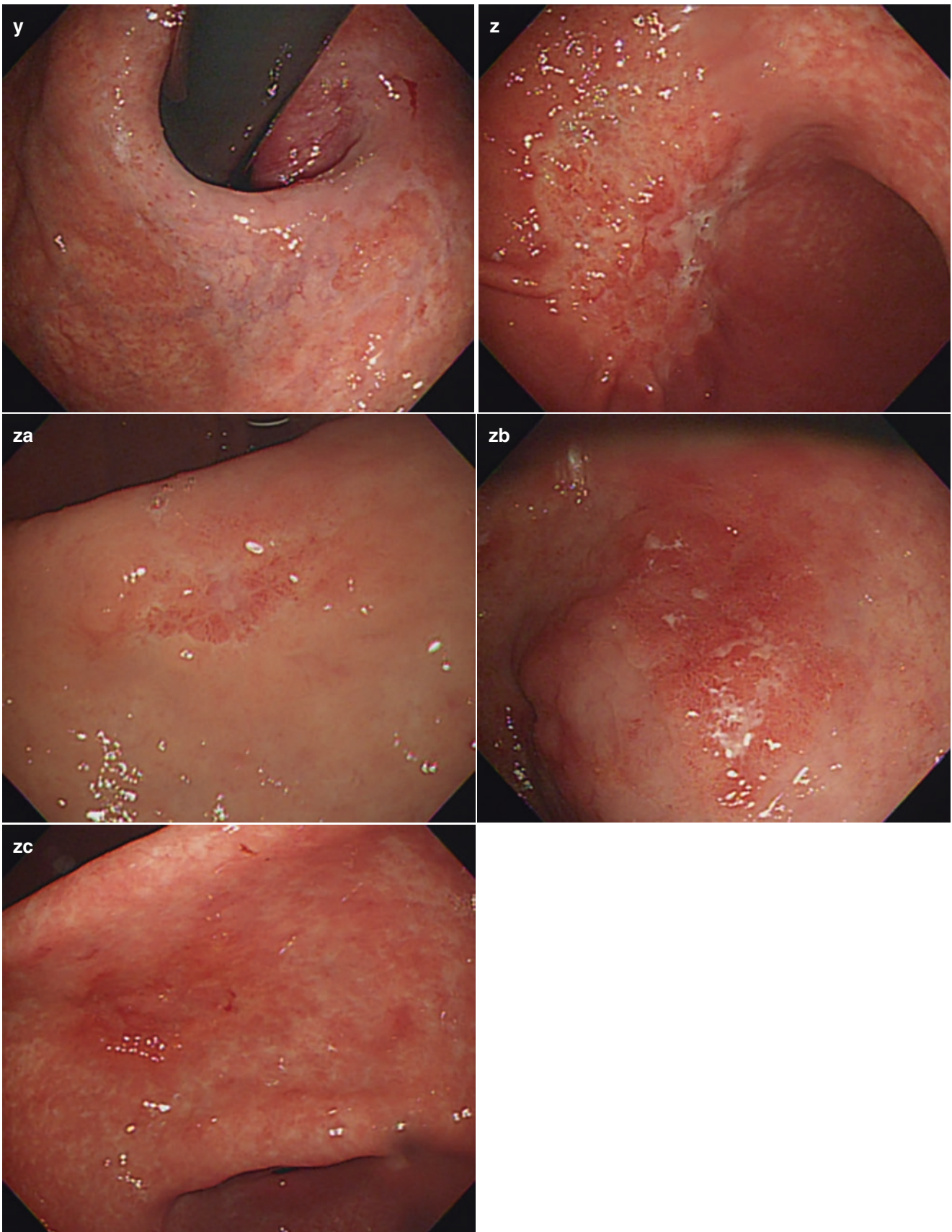


Fig. 11.3 (continued)

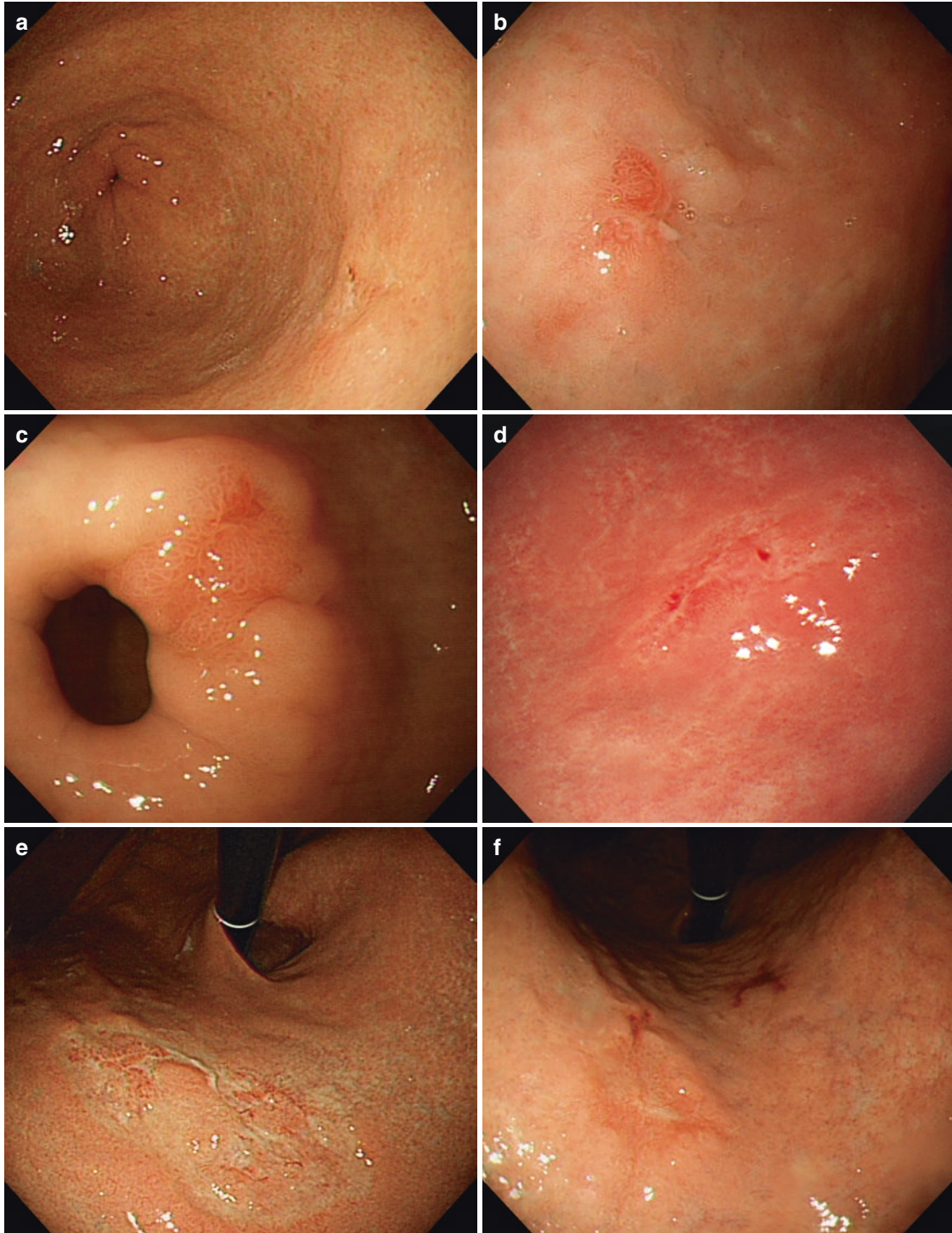


**Fig. 11.3** (continued)

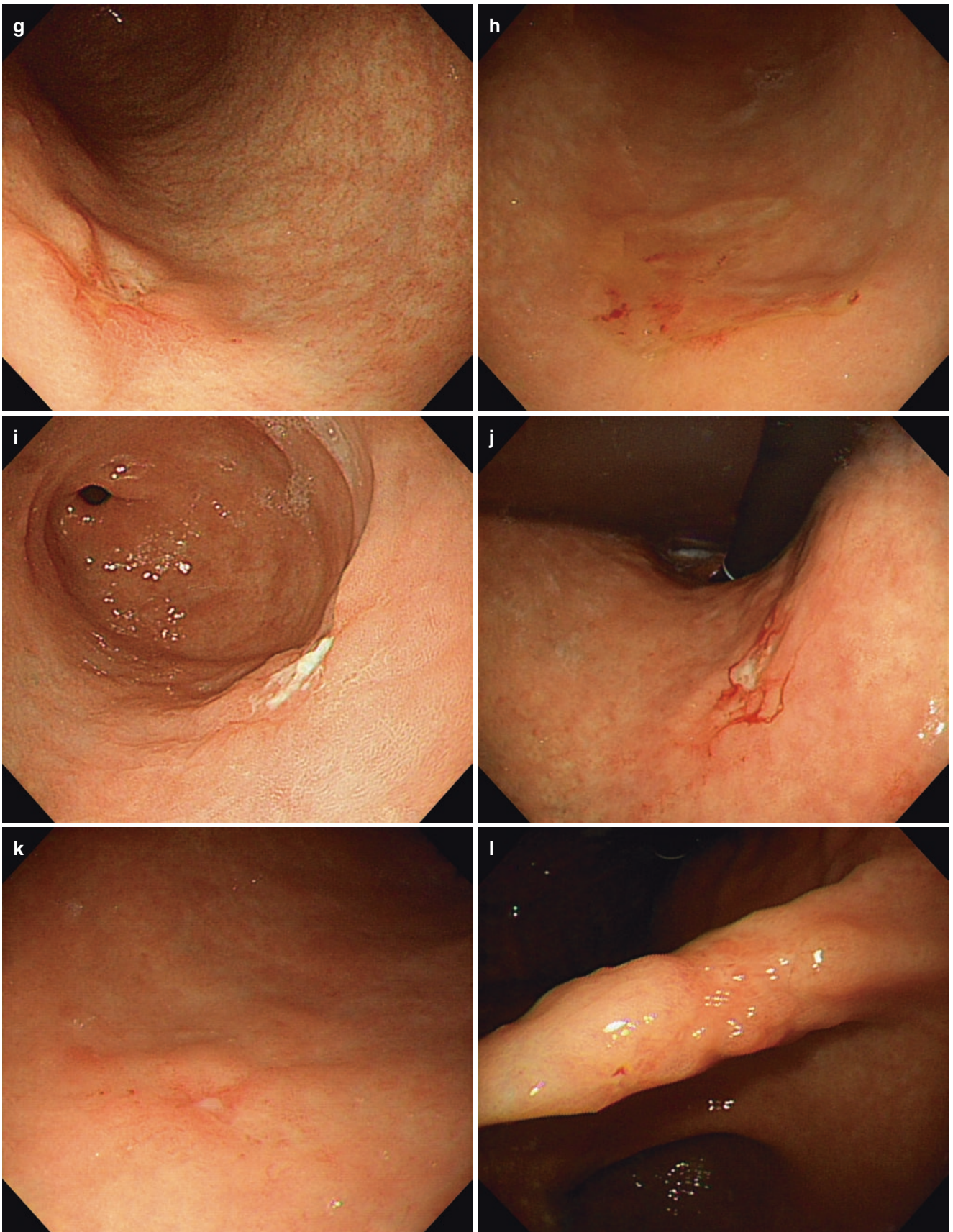
## 11.4 Type IIc EGC

Type IIc is the most common type in EGC and a superficial depressed lesion without ulcer. The base of the lesion is usually uneven, dirty, and covered with whitish exudates or

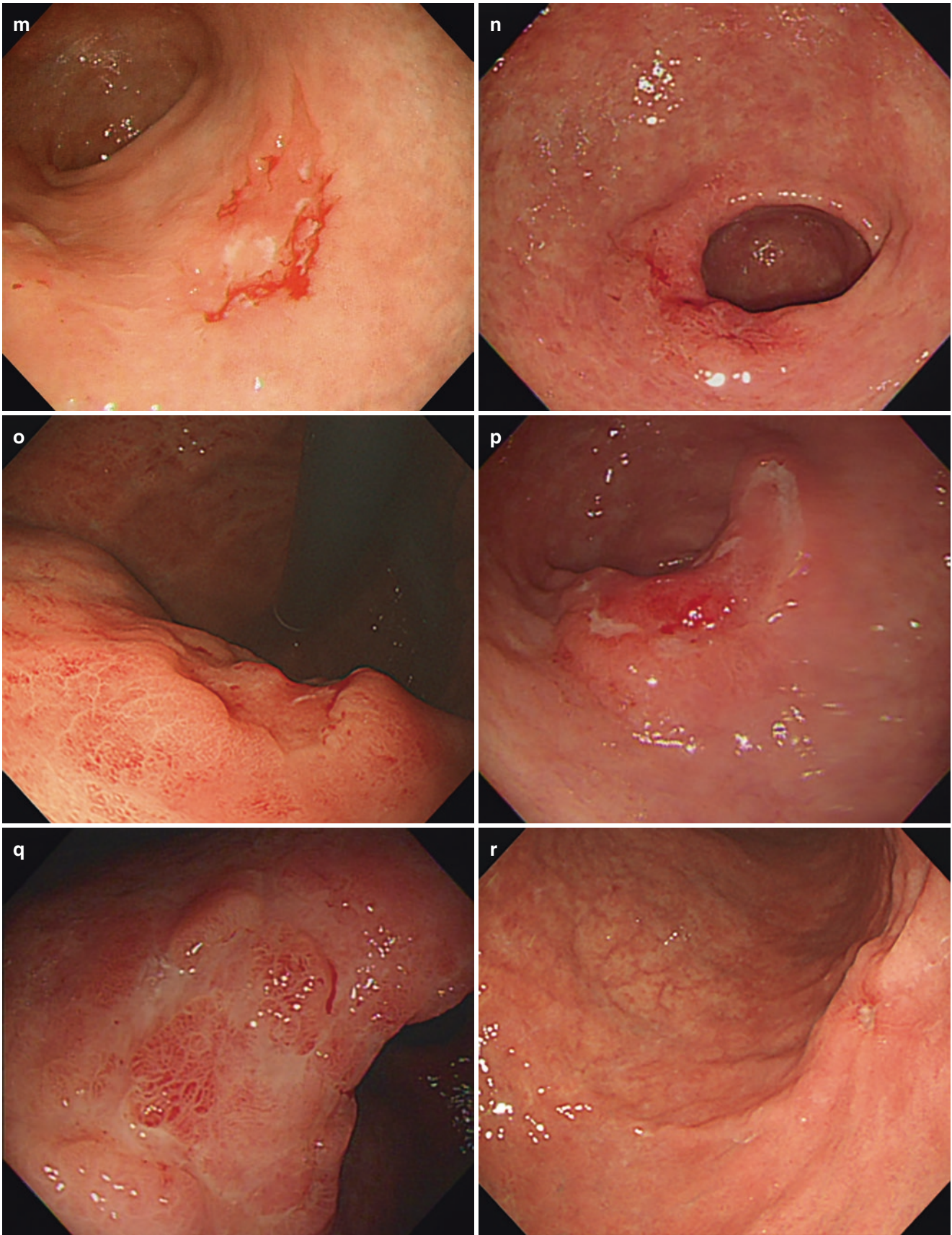
hemorrhage. The edge and margin of the lesion are usually irregular or blurred (Figs. 11.4 and 11.5). Depressed lesion can be accompanied by converging folds, which can show abrupt cutting, clubbing, fusion, or rat-tail appearance (Fig. 11.6).



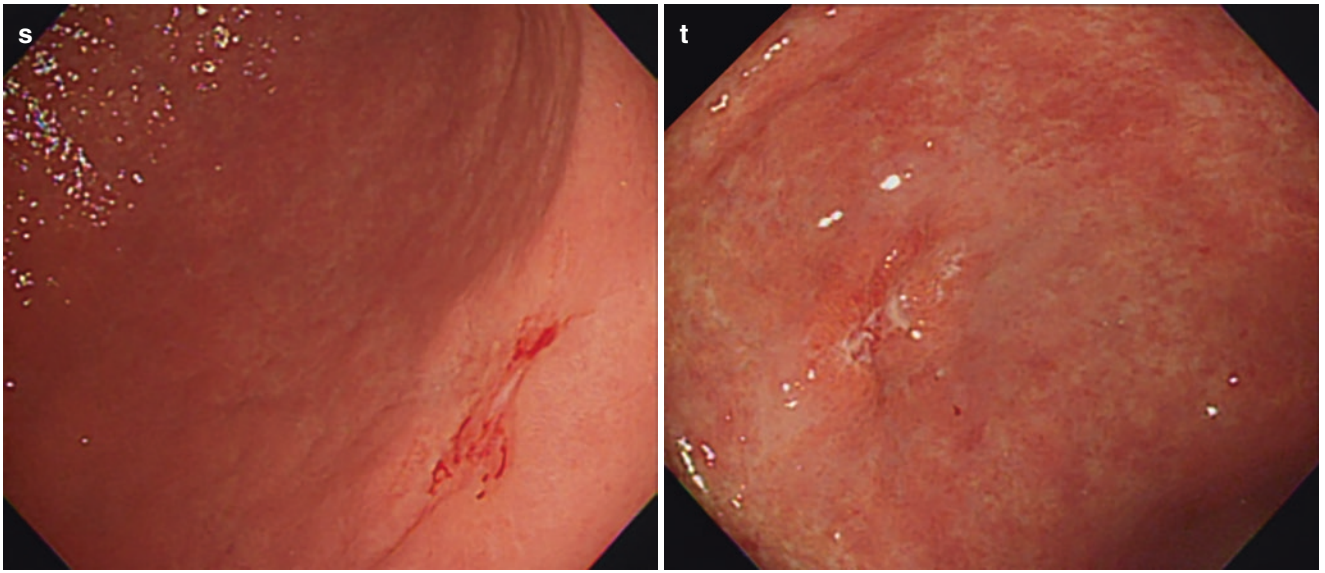
**Fig. 11.4** Typical Type IIc EGC confined to mucosa. Typical endoscopic finding of mucosal cancer is a small, shallow mucosal depression without evident converging folds which suggest deep tumor invasion [4, 5]



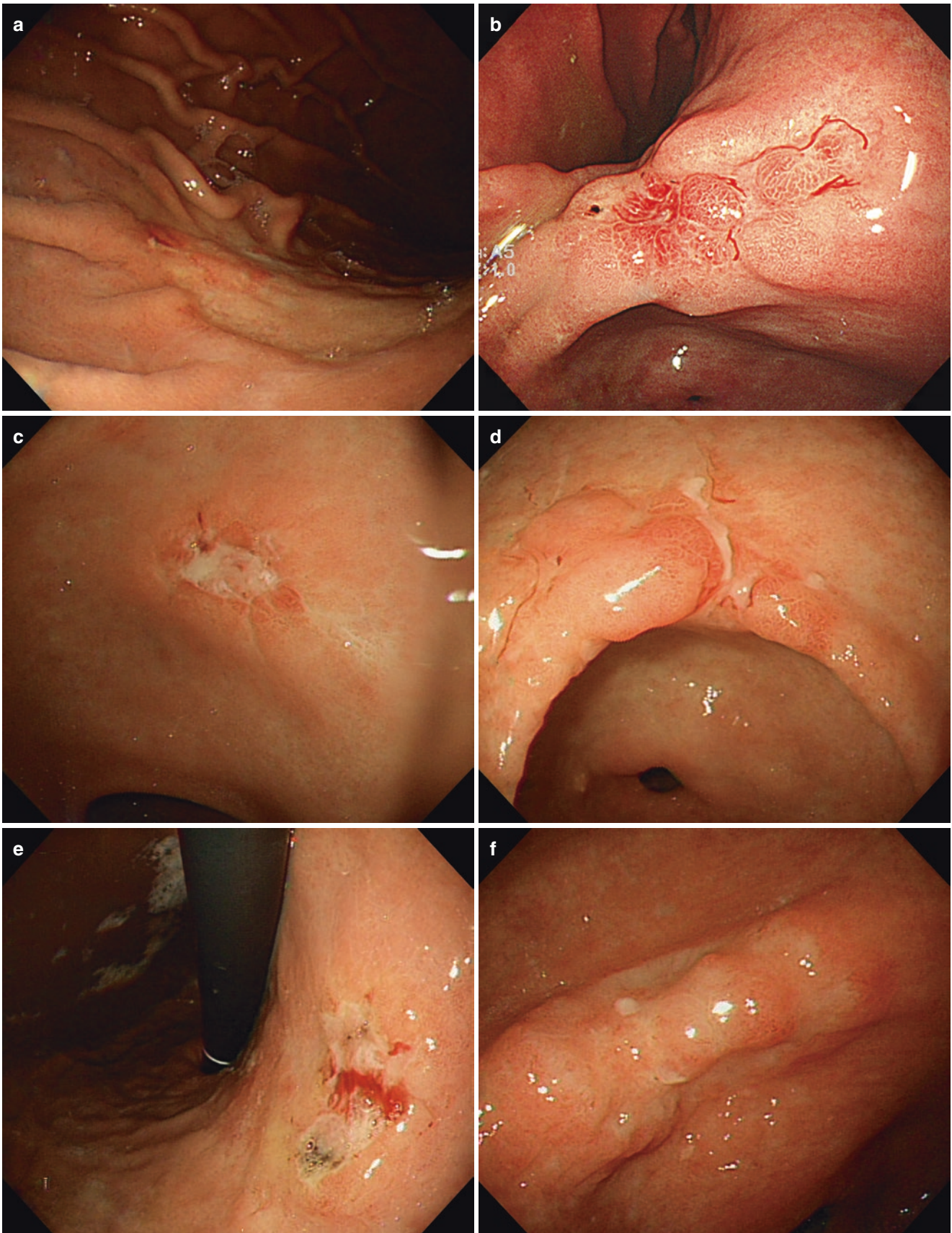
**Fig. 11.4** (continued)



**Fig. 11.4** (continued)

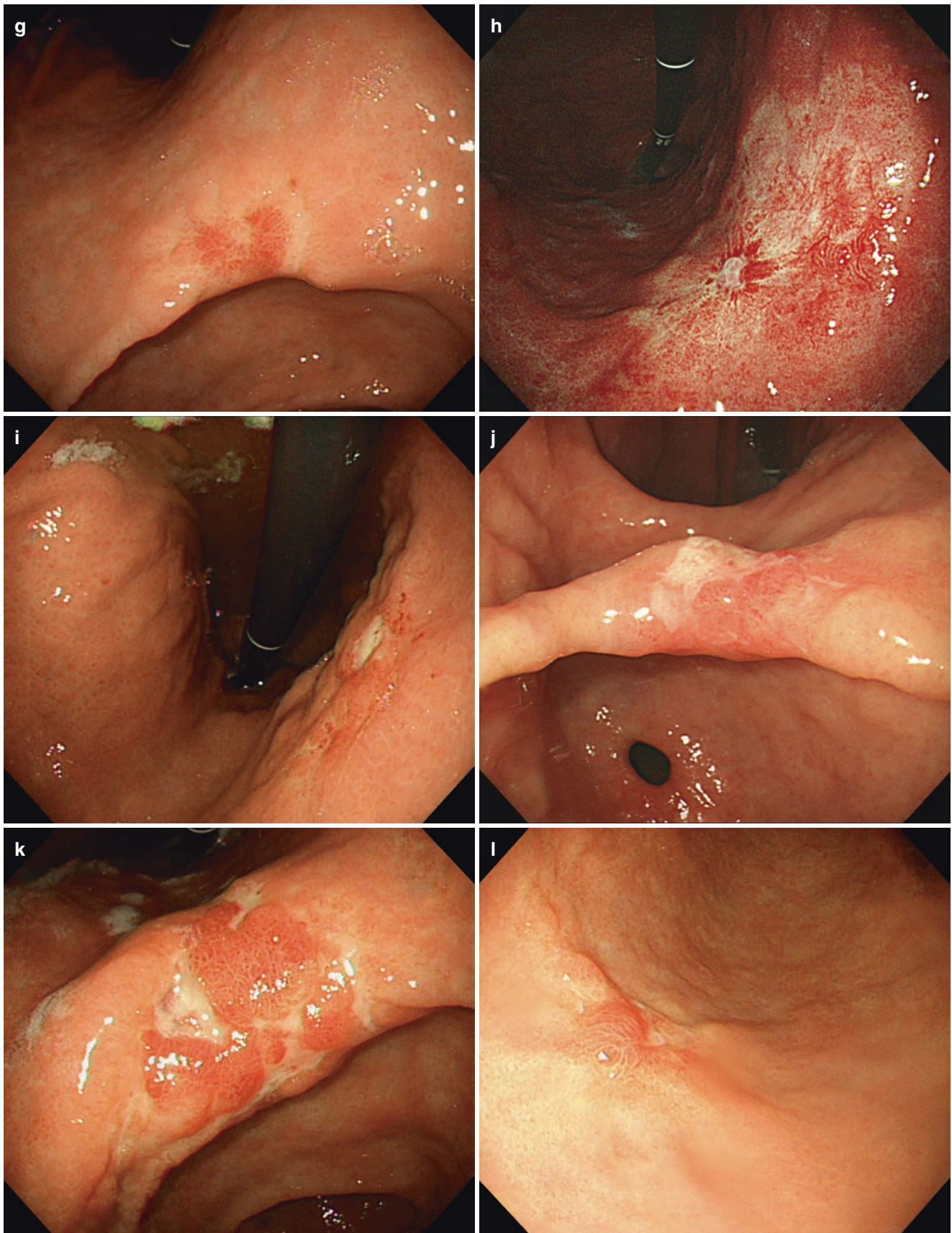


**Fig. 11.4** (continued)



**Fig. 11.5** Typical Type IIc EGC which invades submucosal layer without evident abnormal fold convergences. Typical endoscopic finding is a more depressed lesion which suggests submucosal tumor invasion without excavated ulcer





**Fig. 11.5** (continued)

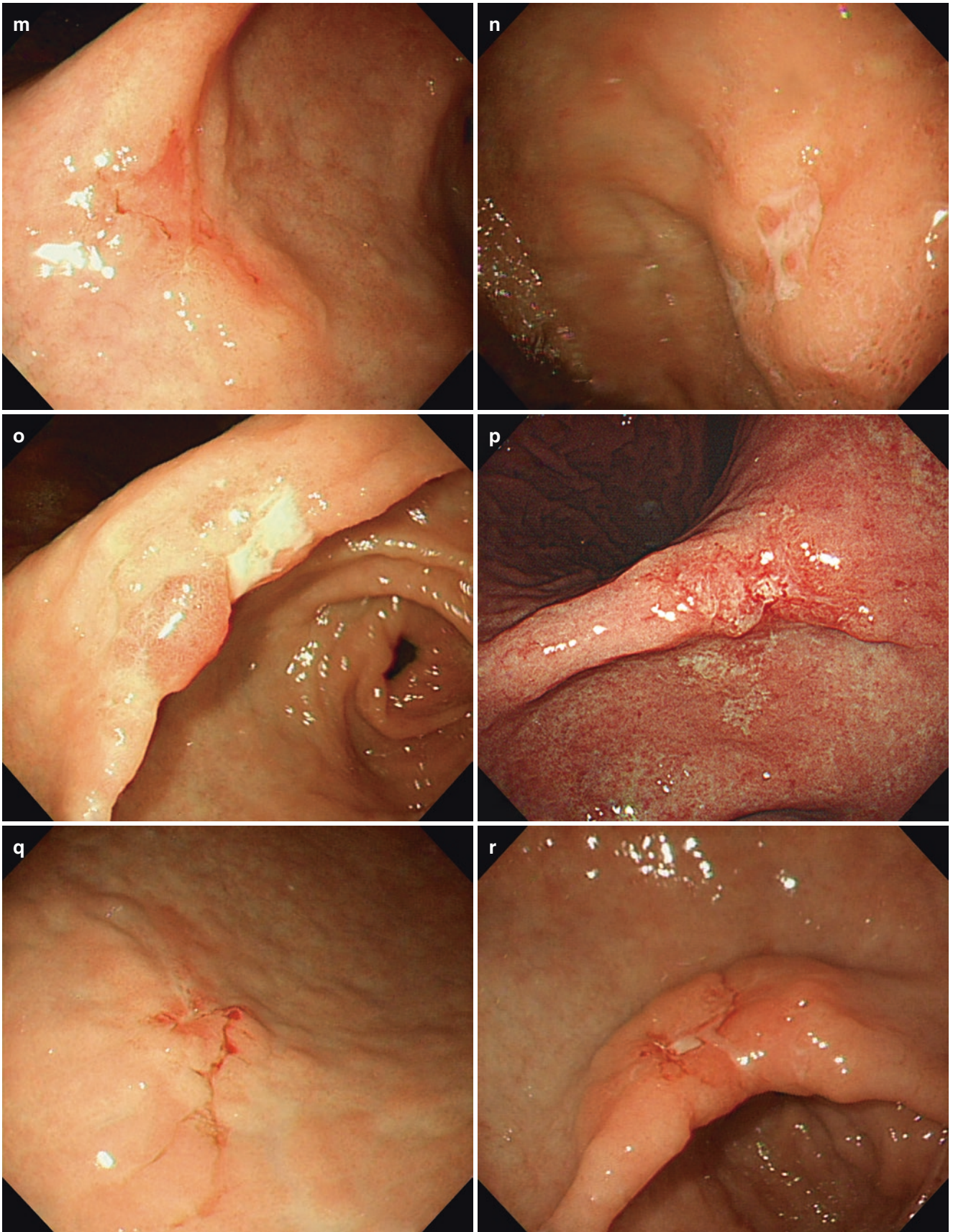
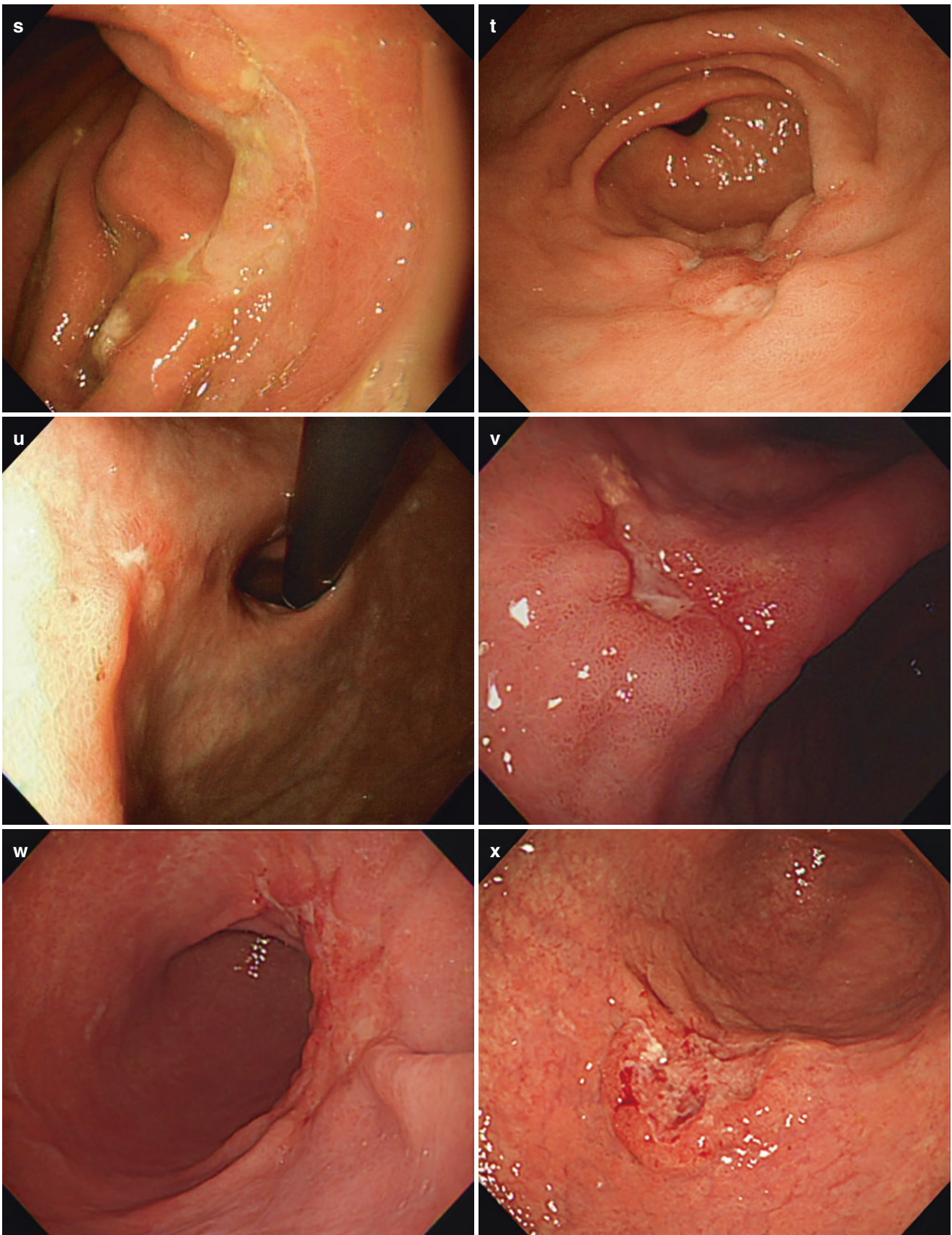
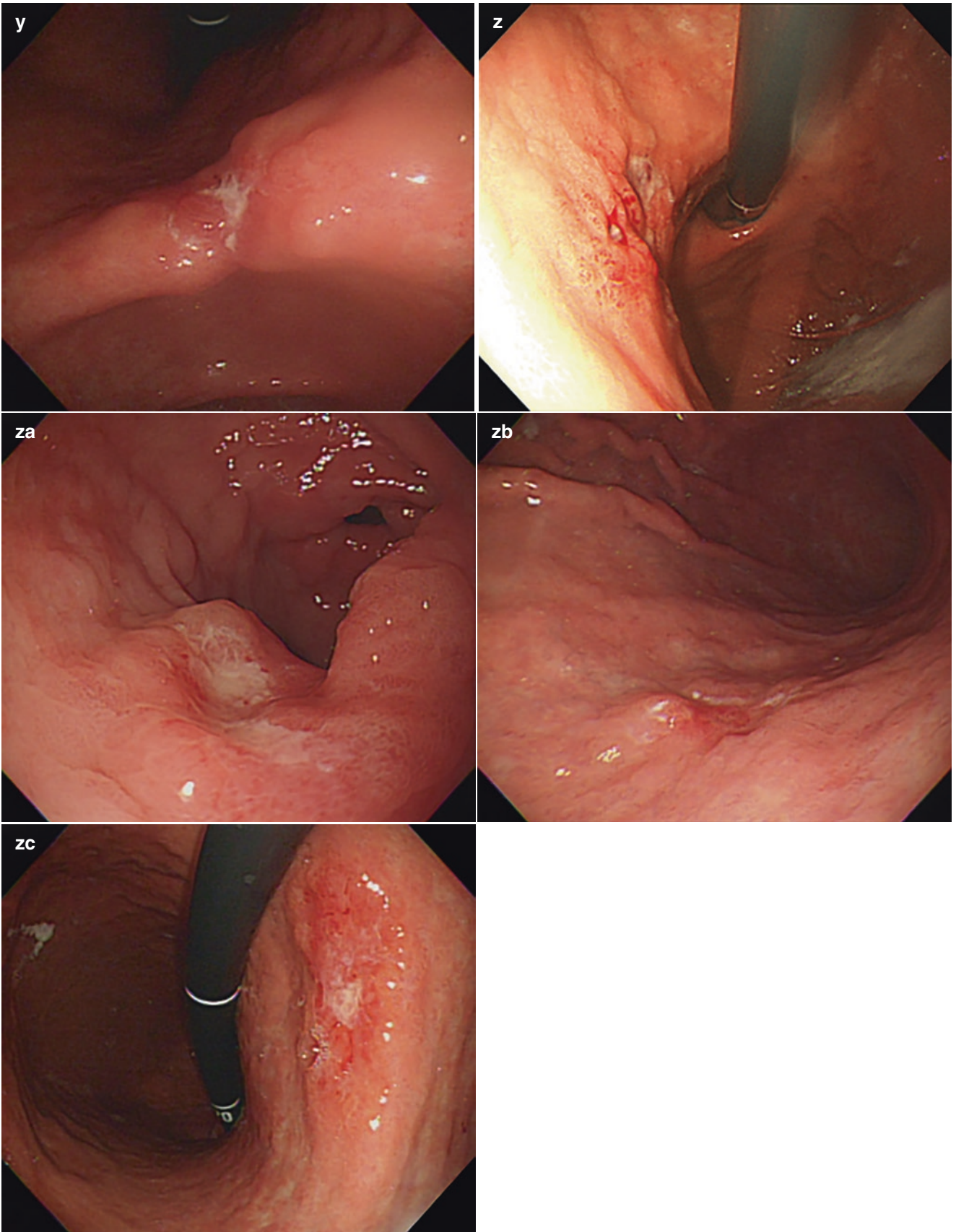


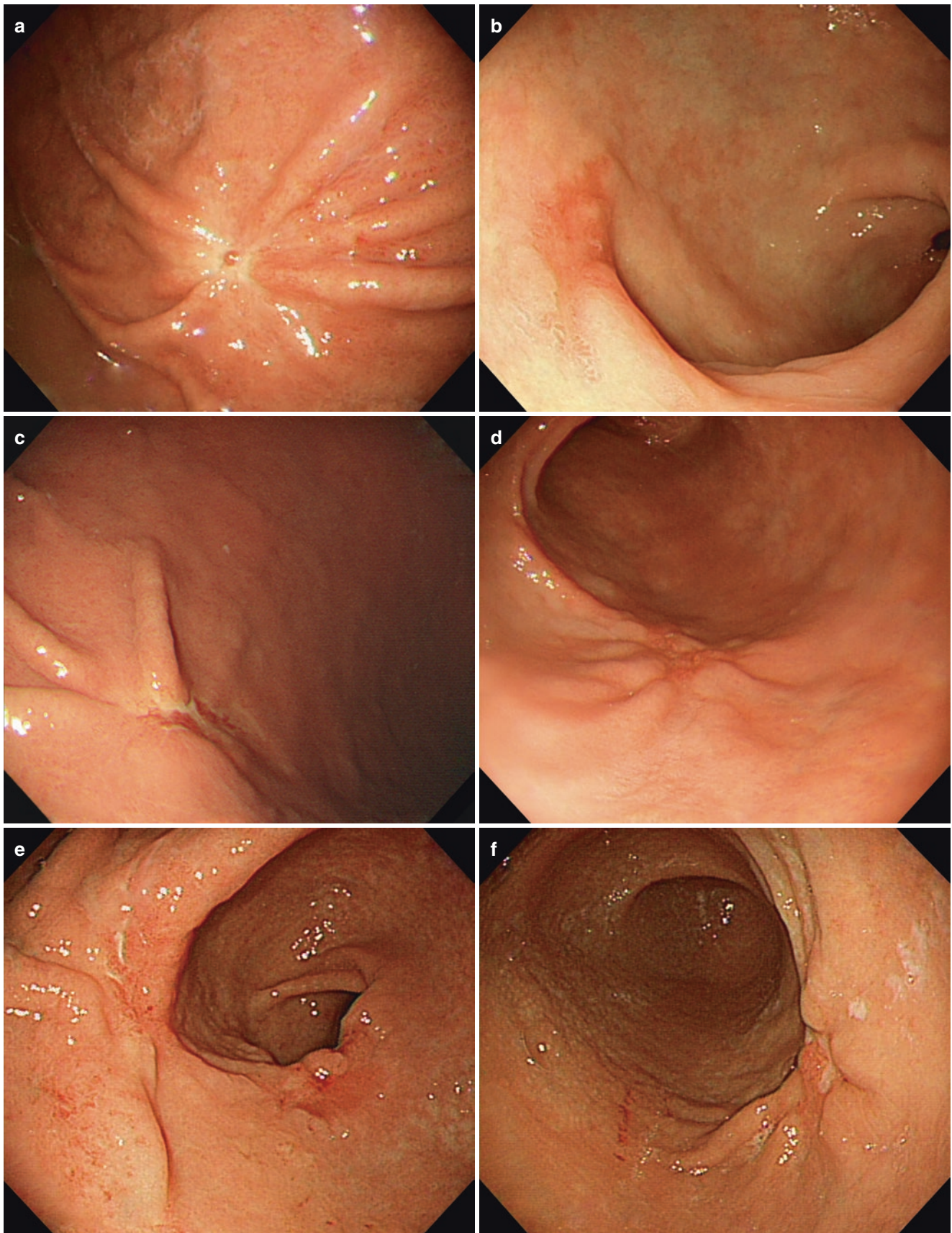
Fig. 11.5 (continued)



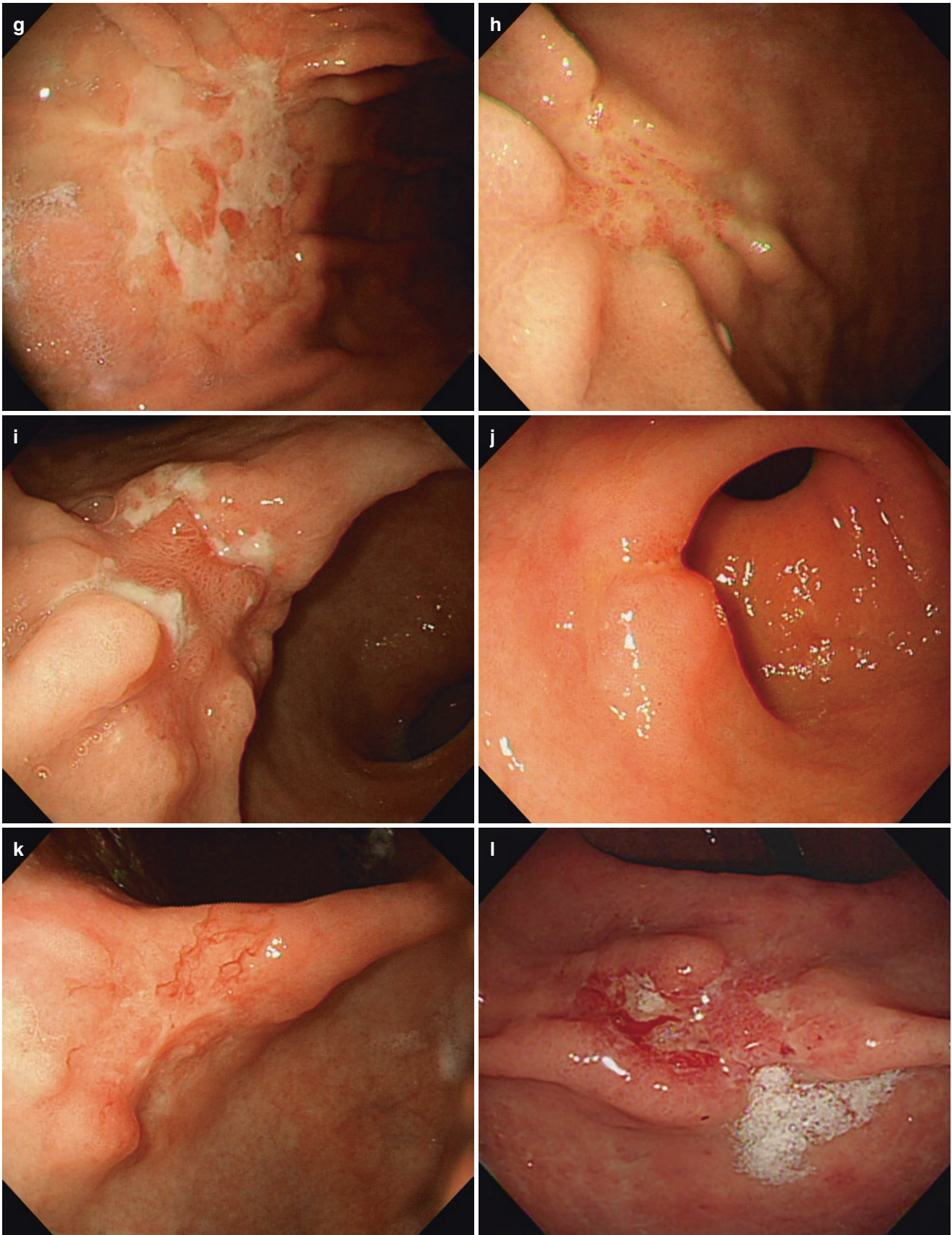
**Fig. 11.5** (continued)



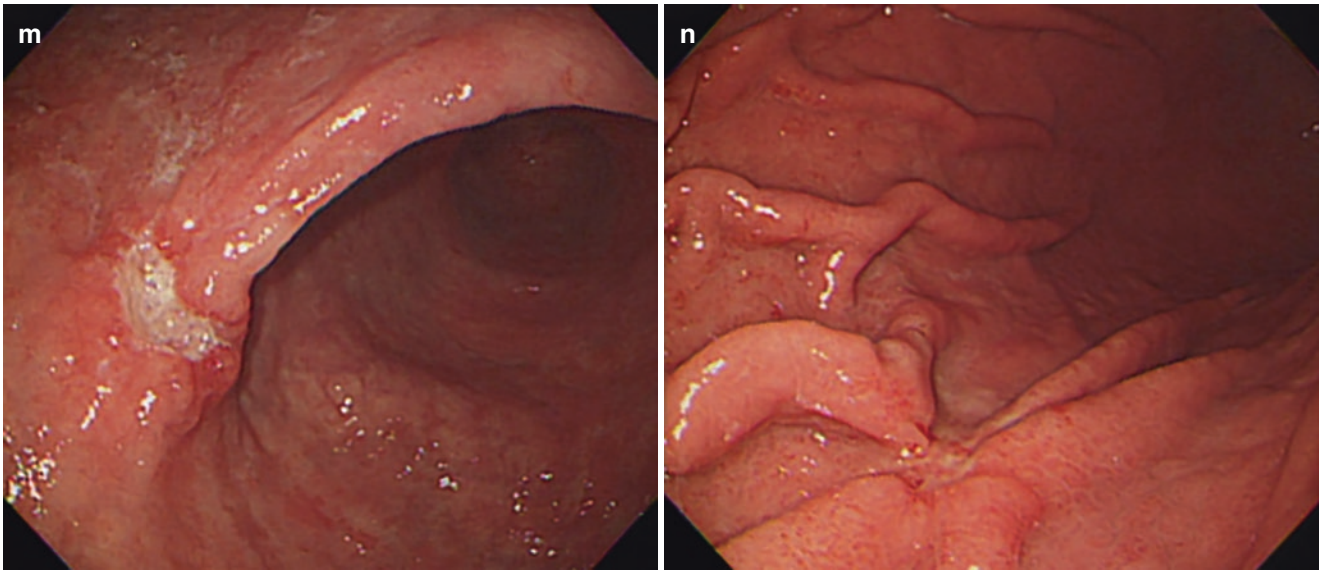
**Fig. 11.5** (continued)



**Fig. 11.6** Typical Type IIc EGC which invades submucosal layer with abnormal fold convergences. Abnormal fold convergences are clubbing, fusion, abrupt cutting, or rat-tail appearance and suggest tumor invasion into submucosal layer



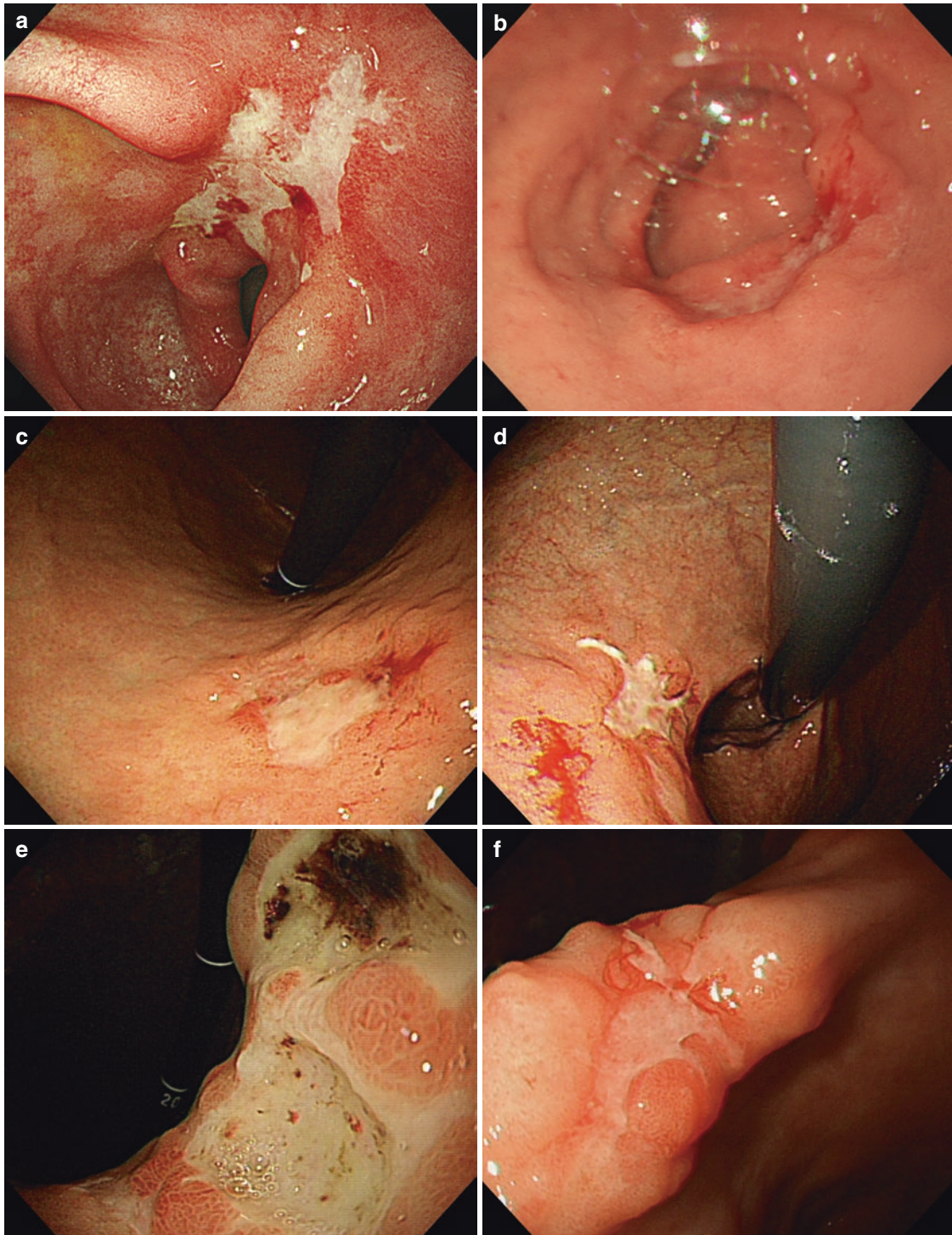
**Fig. 11.6** (continued)



**Fig. 11.6** (continued)

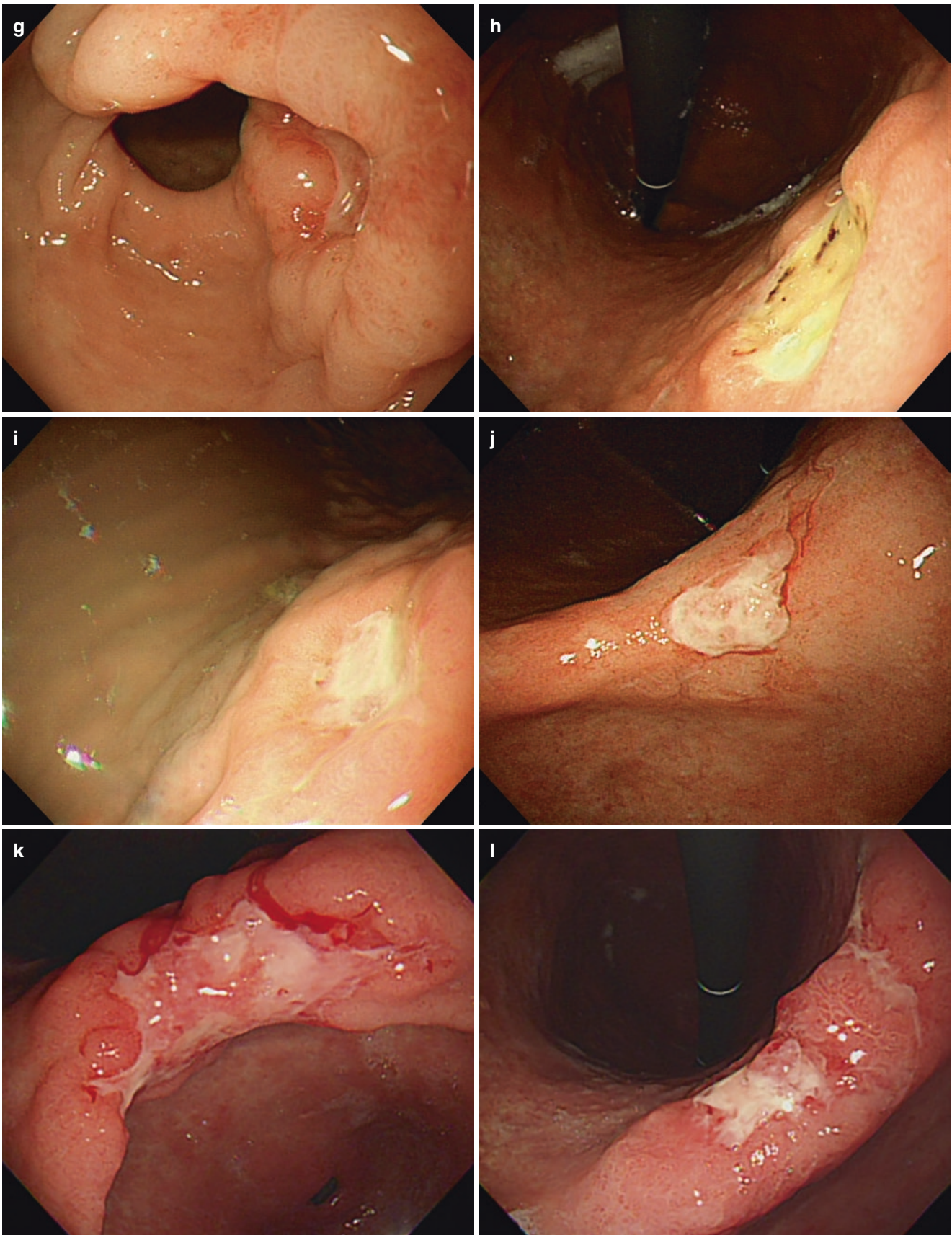
## 11.5 Type III EGC

Type III is an excavated ulcer, which usually means that the tumor extends to submucosa. The ulcer is more deep or irregular than Type IIc, and the abnormal changes of converging folds are usually evident (Fig. 11.7).

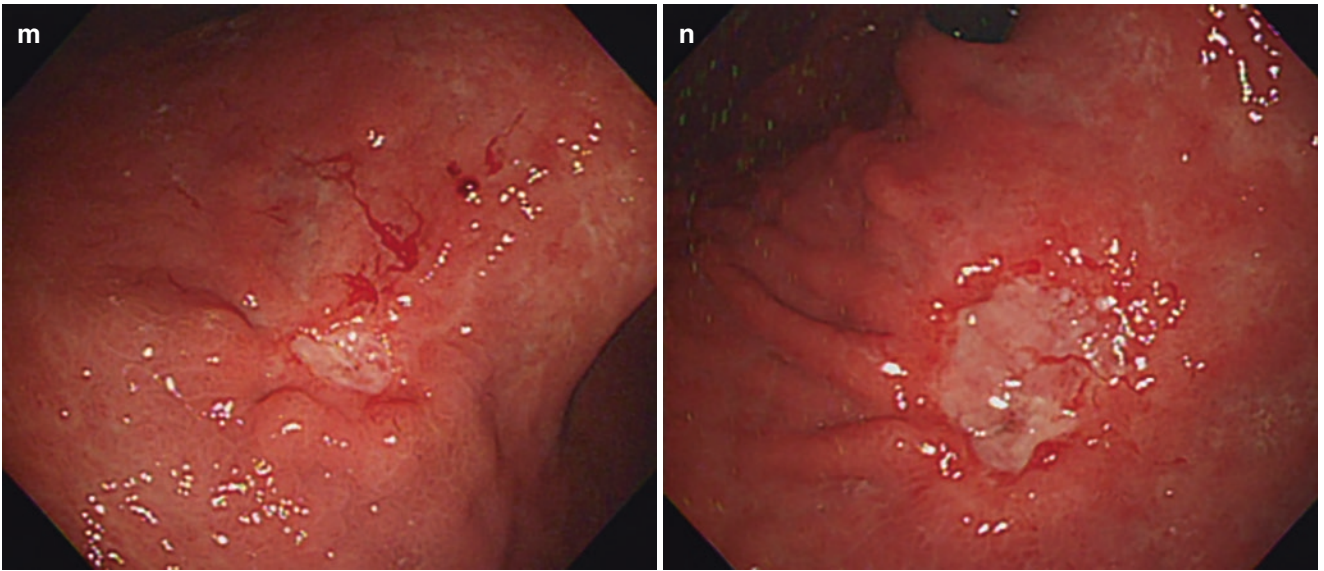


**Fig. 11.7** Typical Type III EGC with excavated ulcer. Abnormal converging folds can be accompanied in the various forms of clubbing, fusion, abrupt cutting, or rat-tail appearance





**Fig. 11.7** (continued)

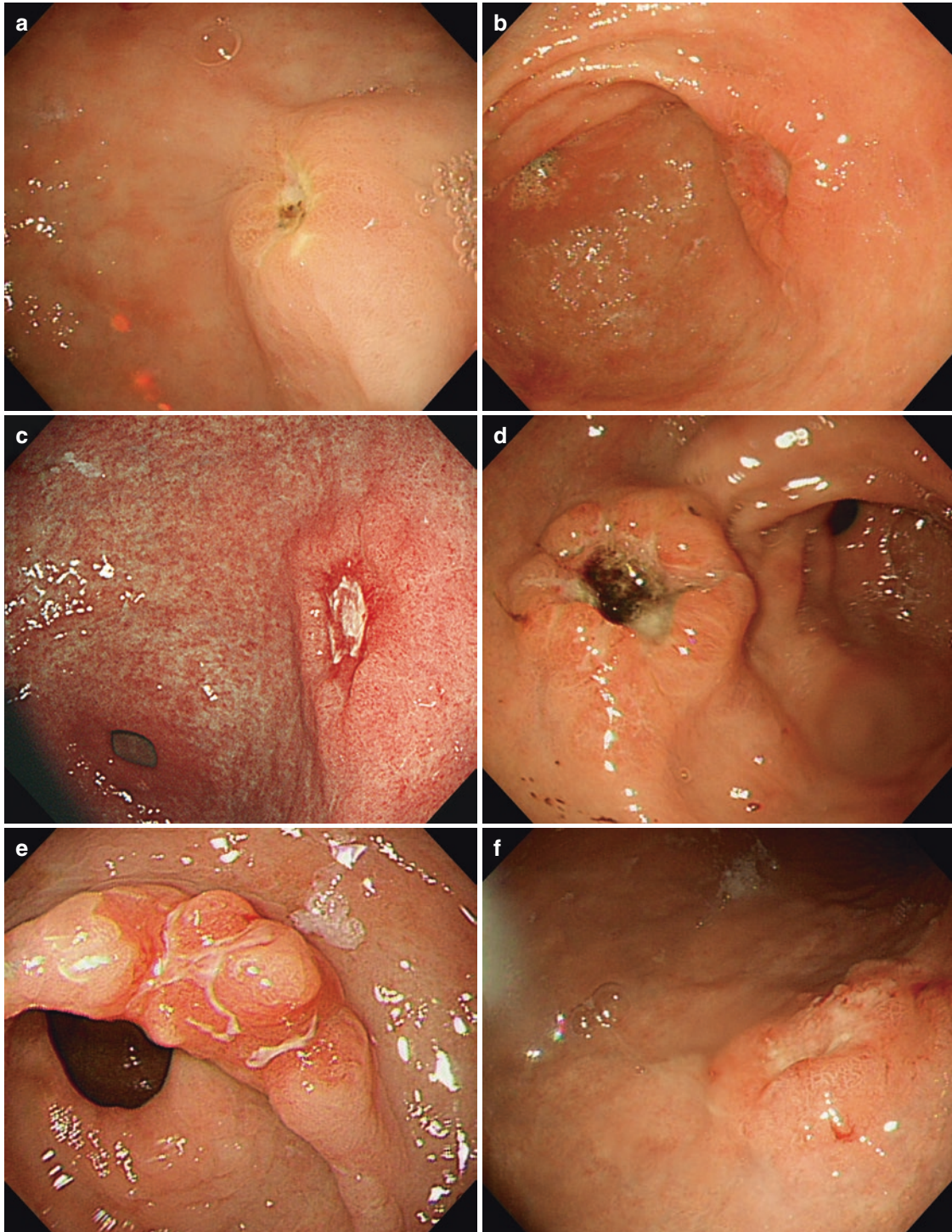


**Fig. 11.7** (continued)

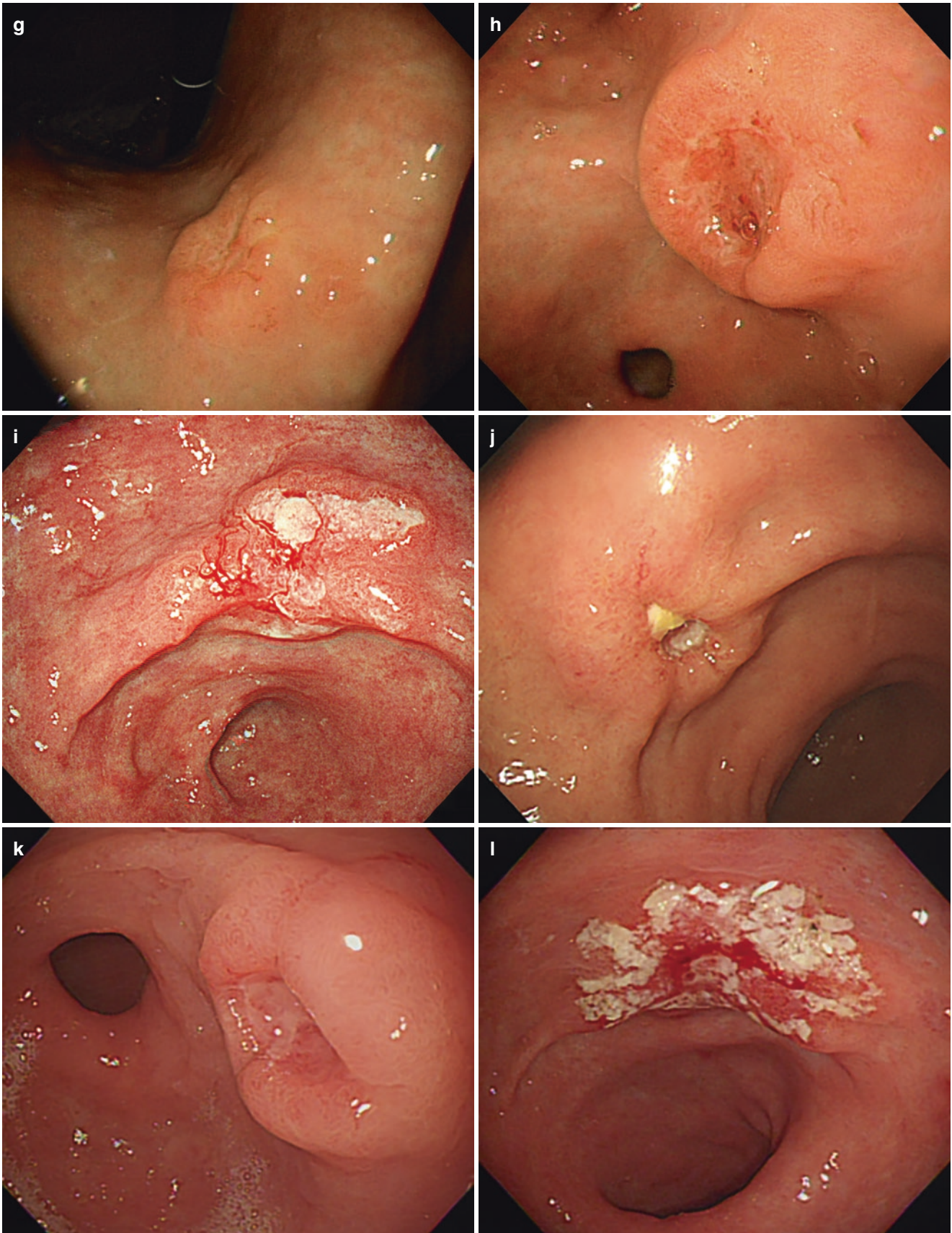
### 11.6 Mixed-Type EGC

Mixed-type EGC is a mixture of two types. The former means the major type of the lesion and the latter the minor type. A mixture of elevated and depressed type is the Type

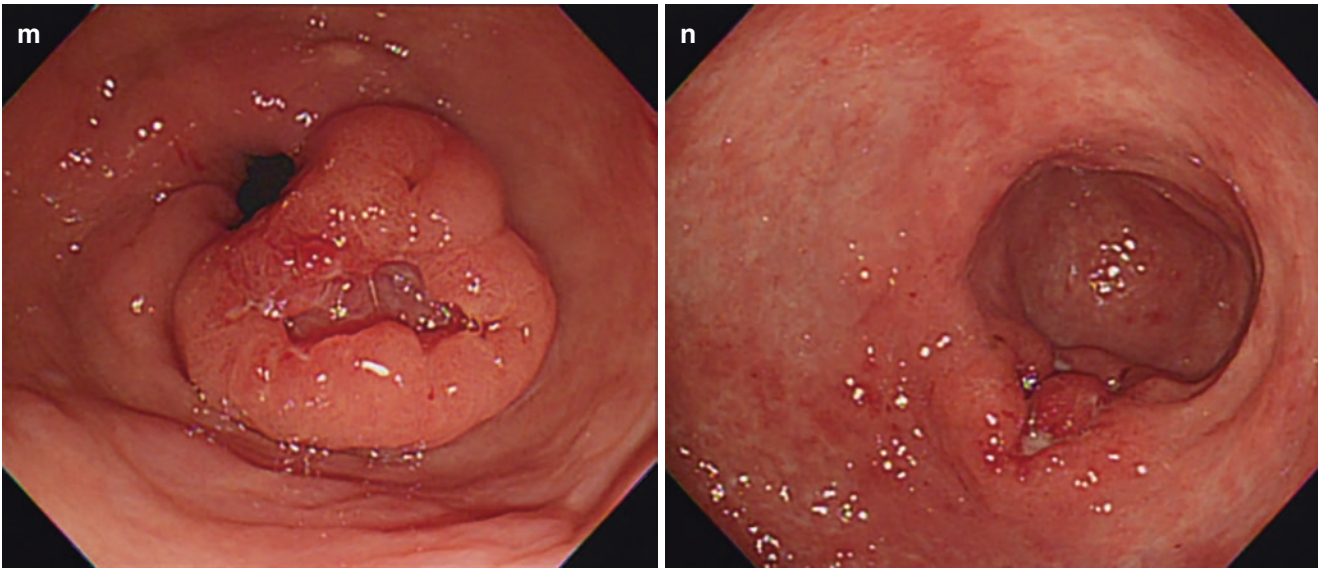
IIa + IIc or IIc + IIa (Fig. 11.8). Another type is the mixture of flat and elevated or depressed Type (IIb + IIa or IIb + IIc and vice versa) (Fig. 11.9). Shallow depressed lesions can be accompanied by central deep ulcers (Type IIc + III).



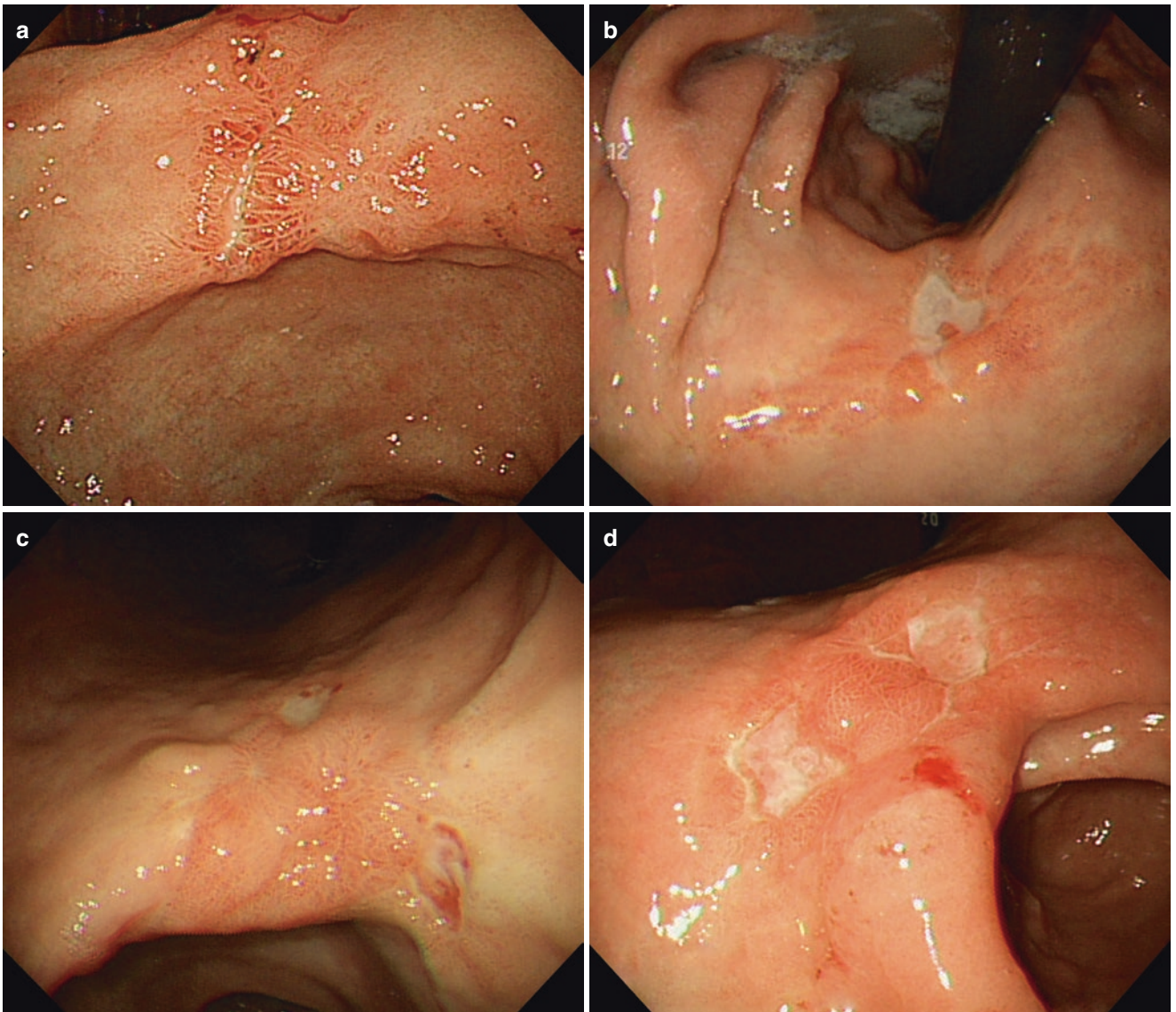
**Fig. 11.8** Mixed types of elevated and depressed lesion



**Fig. 11.8** (continued)



**Fig. 11.8** (continued)

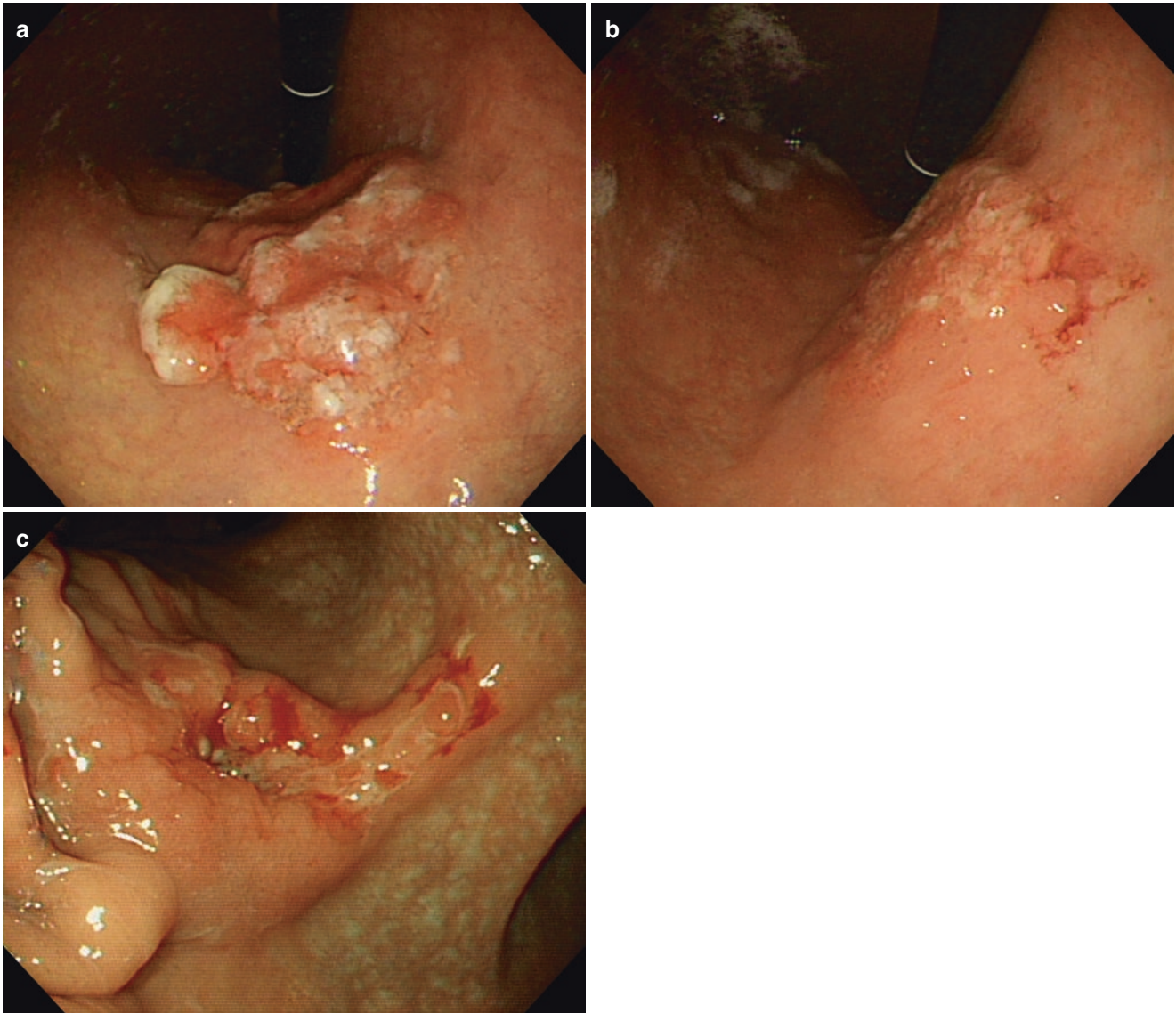


**Fig. 11.9** Mixed types of flat or depressed lesions

### 11.7 AGC-Like EGC

Although huge polypoid mass with wide base usually invades over submucosal layer, the mass with stalk or short neck can be confined to mucosa or submucosa (Fig. 11.10). In

depressed lesion, deep ulcerative finding usually means the tumor invasion over submucosa, but in some proportions, the tumor cells may be necrotized in ulcer base in lack of sufficient vascular supply and only exist around the margin of the lesion which is confined to mucosa or submucosa.



**Fig. 11.10** AGC-like EGC showing elevated mass and excavated ulcer

## References

1. Endoscopic Classification Review Group. Update on the Paris classification of superficial neoplastic lesions in the digestive tract. *Endoscopy*. 2005;37:570–8.
2. Japanese Gastric Cancer Association. Japanese classification of gastric carcinoma: 2nd English edition. *Gastric Cancer*. 1998;1:10–24.
3. The Paris endoscopic classification of superficial neoplastic lesions: esophagus, stomach, colon: November 30 to December 1. 2002. *Gastrointest Endosc*. 2003;58(6 Suppl):S3–43.
4. Choi J, Kim SG, Im JP, et al. Endoscopic prediction of tumor depth in early gastric cancer. *Gastrointest Endosc*. 2011;73:917–27.
5. Sano T, Okuyama Y, Kobori O, et al. Early gastric cancer. Endoscopic diagnosis of depth of invasion. *Dig Dis Sci*. 1990;35:1340–4.