

Chapter 12

A Reevaluation of the Munson-Nygren-Retriever Submarine Landslide Complex, Georges Bank Lower Slope, Western North Atlantic

Jason D. Chaytor, David C. Twichell, and Uri S. ten Brink

Abstract The Munson-Nygren-Retriever (MNR) landslide complex is a series of distinct submarine landslides located between Nygren and Powell canyons on the Georges Bank lower slope. These landslides were first imaged in 1978 using widely-spaced seismic reflection profiles and were further investigated using continuous coverage GLORIA sidescan imagery collected over the landslide complex in 1987. Recent acquisition of high-resolution multibeam bathymetry across these landslides has provided an unprecedented view of their complex morphology and allows for a more detailed investigation of their evacuation and deposit morphologies and sizes, modes of failure, and relationship to the adjacent sections of the margin, including the identification of an additional landslide within the MNR complex, referred to here as the Pickett slide. The evacuation zone of these landslides covers an area of approximately 1,780 km². The headwalls of these landslides are at a depth of approximately 1,800 m, with evacuation extending for approximately 60 km downslope to the top of the continental rise. High-relief debris deposits, in the form of blocks and ridges, are present down the length of the majority of the evacuation zones and within the deposition area at the base of the slope. On the continental rise, the deposits from each of the most recent failures of the MNR complex landslides merge with debris from earlier continental slope failures, canyon and along-slope derived deposits, and prominent upper-rise failures.

Keywords Canyons • Multibeam bathymetry • Debris deposits • Seismic reflection

J.D. Chaytor (✉) • D.C. Twichell • U.S. ten Brink
U.S. Geological Survey, USGS Woods Hole Coastal and Marine Science Center,
Woods Hole, MA 02543, USA
e-mail: jchaytor@usgs.gov

12.1 Introduction

The lower continental slope and upper rise off Georges Bank, east of Massachusetts, USA (Fig. 12.1), is known for some time to be the location of several large submarine landslides (e.g., Scanlon 1984), but the spatial and temporal distribution of

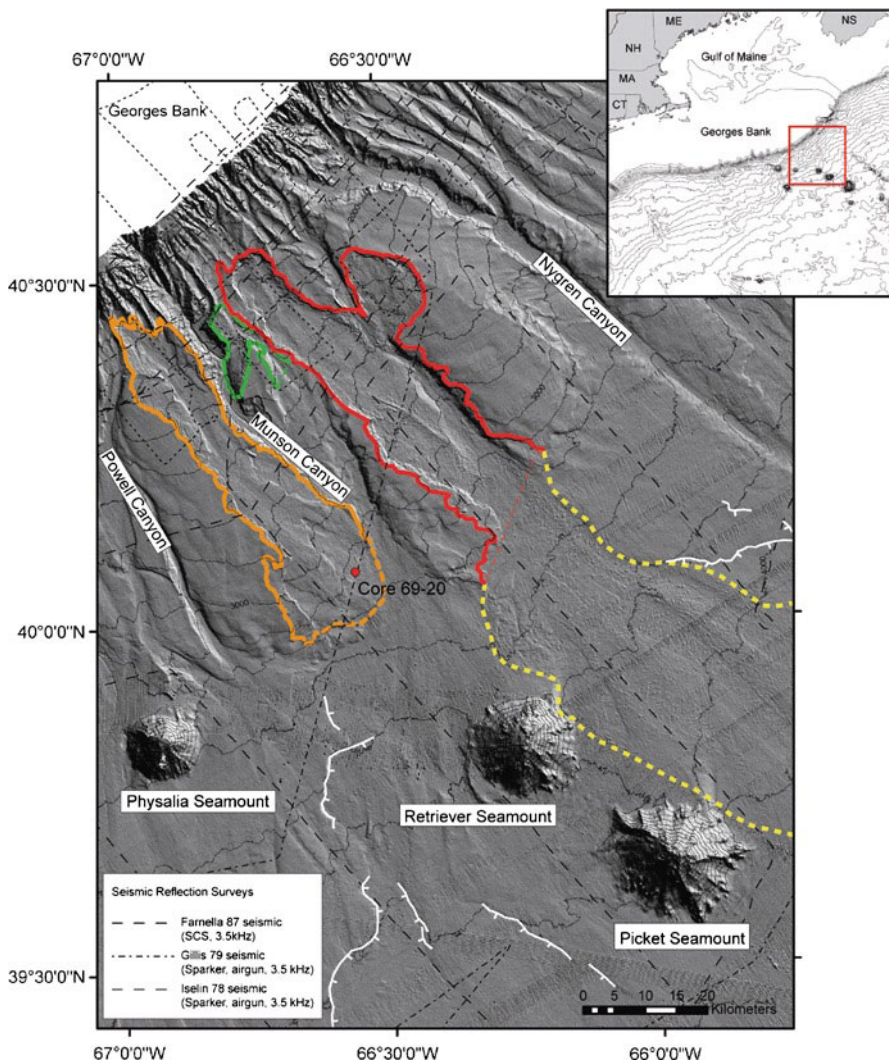


Fig. 12.1 Shaded-relief bathymetry of the MNR complex area with the Munson-Nygren (red), Retriever (orange) and Picket (green) submarine landslides scars (evacuation zones) highlighted. The debris deposit of the Munson-Nygren slide is outlined by the yellow dashed line. Upper rise landslide scars are marked in white. Seismic reflection profiles that cover the area are also shown. *Inset* shows the location of the study area

slope failure has proven elusive. O'Leary (1986a) using seismic reflection profiles provided the first detailed examination of the lower slope off Georges Bank specifically for the characterization of the Munson-Nygren landslide. Using additional data collected as part of the 1987 GLORIA surveys along the US east coast, O'Leary (1993) observed that the Retriever slide was a distinct feature adjacent to, but not part of the Munson-Nygren slide and resolved three time periods of landslide activity.

The continental slope and upper rise along Georges Bank consists of a layered succession of Cretaceous through Cenozoic sediments overlying a basement of Triassic breakup and Jurassic reef units (Poag 1982). The scars for each of the landslides in the MNR complex incise the Layered Rise Unit (LRU) of O'Leary (1986b, 1988) or upper continental rise sedimentary wedge of Danforth and Schwab (1990), which onlaps Upper Cretaceous-Paleocene age lower slope units (Poag 1982). O'Leary (1988) identified three subunits of the LRU based on seismic data: (1) an upper layered subunit consisting of Pleistocene to Pliocene silty-clay; (2) a middle transparent subunit of Pliocene to early Oligocene pelite; and (3) a lower parallel-layered subunit of Eocene stratified mudstones. Danforth and Schwab (1990) identified four seismostratigraphic units within the LRU and concluded that the age of the base of the section is mid- to late Miocene (Merlin reflector). Local variability within the LRU is present along the margin due to interfingering of locally derived slope and shelf material deposited by debris flows and turbidites. It is likely that sections of the LRU are time-correlative, if not down-slope extensions of, similar Tertiary sedimentary units along the upper slope above the MNR complex.

In this paper, we use newly acquired multibeam bathymetry data and previously collected subbottom reflection data to reevaluate the surficial morphological features and relative ages of the landslides (slides) within the MNR complex. A more detailed understanding of these characteristics of the slides is required in order to investigate their potential pre-conditioning factors, triggering mechanisms, and failure processes.

12.1.1 Data

A new multibeam bathymetry compilation was the primary source of information used in the reevaluation of the MNR complex (Fig. 12.1). This new compilation merged multibeam data from the 2005 University of New Hampshire (UNH) USNS Henson 4-1 survey undertaken as part of the U.S. extended continental shelf program (Gardner et al. 2006) and a 2009 U.S. Geological Survey (USGS) cruise on the NOAA Ship Ronald H. Brown. The UNH data were acquired with a Kongsberg EM121 and extend from water depths of ~1,800 to over 4,000 m, while the USGS data were acquired with a SeaBeam 2112 and cover the upper slope from water depths of ~400 to 1,800 m. The merged data were gridded at resolutions of 100 m, and where data density was sufficiently high, 30 m.

Single-channel (airgun and sparker) and 3.5 kHz seismic reflection profiles collected from the late 1970s to the mid 1980s were reexamined in light of the new bathymetry dataset. These included data from the 1979 R/V James Gillis (Bailey and Aaron 1982a), 1978 R/V Columbus Iselin (Bailey and Aaron 1982b), and 1987 R/V Farnella (GLORIA) surveys (EEZ-SCAN 87 1991).

Only one core is known to have been collected from within the MNR complex and only a limited number of cores have been collected in adjacent areas. Core 69–20 was collected at the seaward end of the Retriever slide scar (Fig. 12.1; Zimmerman 1972), and contained a Holocene/Pleistocene sedimentary section similar to that found along the Scotian slope to the north (Mosher et al. 2004). Core 69–20 was composed of olive-gray/green clay with a relatively high carbonate content overlying alternating layers of moderate reddish-brown clay and silt with isolated pebbles (low carbonate content). No landslide facies similar to those described by Tripsanas et al. (2008) or turbidite layers were described in the core.

12.2 Results and Interpretations

12.2.1 *Munson-Nygren Slide*

The Munson-Nygren submarine slide is one of the most northern and largest (in terms of area and volume) surficial submarine mass failures identified along the US Atlantic continental margin. The morphology of the evacuation zone of Munson-Nygren slide bears the characteristics of a retrogressive landslide, but is complicated by its interaction with an unnamed canyon and a large secondary landslide on the northern flank of the main scar (flank slide; Fig. 12.2). Because of a lack of cores and high-resolution seismic reflection data, the mode of failure for the Munson-Nygren slide is unknown, but may be similar to that of the Logan Canyon debris-flow corridor on the Scotian slope (Mosher et al. 2004).

The downslope length of the main evacuation zone is approximately 60 km, with a maximum width of approximately 12 km, excluding the width of the adjacent canyon and a secondary landslide. These values are significantly different from those of O’Leary (1986a), who measured a length of at least 35 km and a width of 20 km. The headwall is characterized by a series of concave, stepped scarps that cut slope gullies, the shallowest at a depth of 1,790 m (present only along the western side of the evacuation), the main headwall scarp at approximately 1,880 m, and the lower scarp at approximately 2,230 m (Figs. 12.2 and 12.3). The main headwall scarp has a maximum height of 280 m, while the maximum heights of the lower and shallow scarps are only 100 and 50 m, respectively. Seismic reflection profiles (e.g., Fig. 12.3) show the presence of chaotic reflections above the main headwall, leading O’Leary (1986a) to suggest sediment loading by debris from an earlier failure upslope of the Munson-Nygren slide served as the trigger for failure. Sidewall heights exceed 200 m along much of the length of the main evacuation zone and in places are prominently stepped,

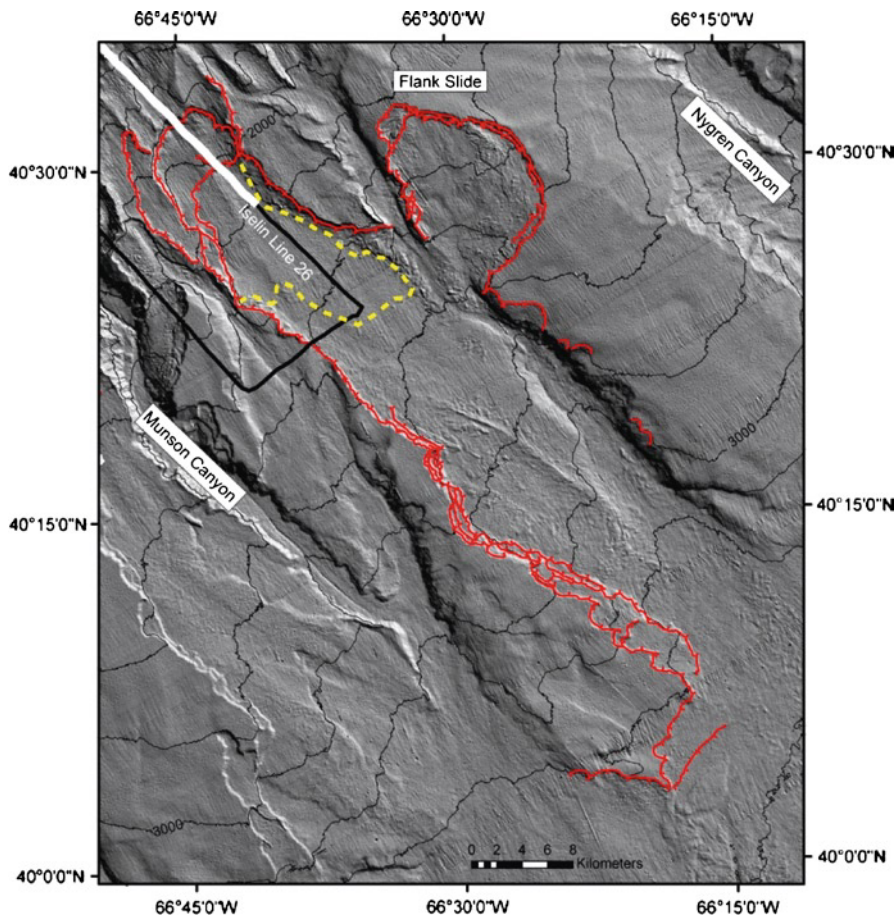


Fig. 12.2 The Munson-Nygren slide scar (evacuation zone). Prominent headwalls and sidewalls marked by red *hatched* lines. The *yellow dashed line* marks the upslope limit of blocky debris deposits. The location of the seismic profile in Fig. 12.3 is highlighted by the *white line*

revealing the architecture of the upper rise stratigraphy. The gradient of the failure surface, as measured down the main axis of the evacuation zone is 1.3° . A roughly circular flank slide breaches the northeastern sidewall of the Munson-Nygren evacuation zone, which occurred coeval with, or subsequent to, the failure of main Munson-Nygren slide. A number of small curved scarps are observed along the margin of the channel downslope of the flank slide, likely revealing the location of incipient landslides. Using the method outlined in Chaytor et al. (2009), the area and volume of the evacuation zone of the Munson-Nygren slide, including the flank landslides were calculated to be 973 and 152 km³, respectively. These and subsequent area and volume values are only estimates, given the presence of debris within the evacuations and at times, poorly defined downslope lengths.

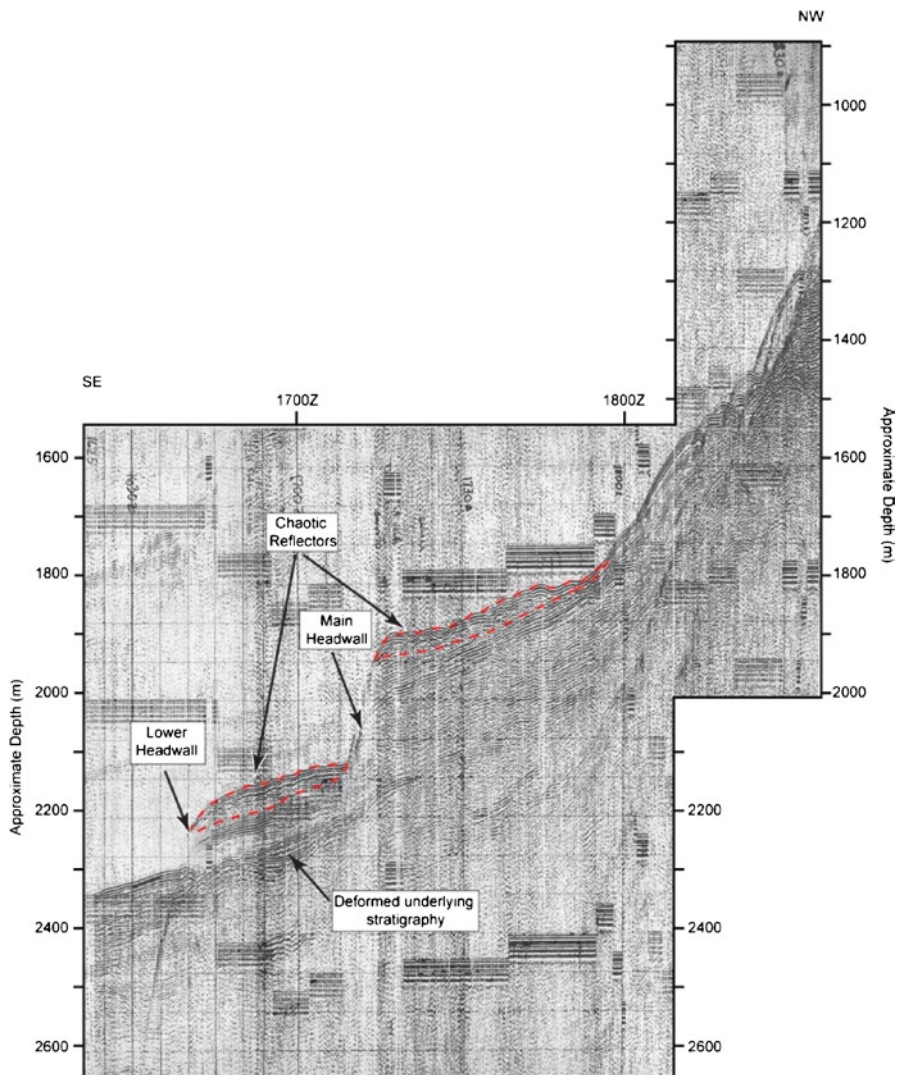


Fig. 12.3 A portion of Iselin air-gun line 26. Note the main and lower headwall scarps and the presence of chaotic (debris?) deposits above the headwall scarps (outlined by *dashed red line*) and deformed stratigraphy underlying the main scarp

Seismic reflection profiles show that the seafloor within the evacuation zone is covered by debris deposits of varying thicknesses (Fig. 12.3). Blocky surficial debris deposits from the Munson-Nygren slide are present within the evacuation zone of the landslide and further downslope (Figs. 12.1 and 12.2). In the upper part of the evacuation zone, blocky debris is only present at the base of sidewall scarps, but blocky and hummocky deposits become more widespread throughout the evacuation zone beginning adjacent to the flank landslide. Debris from the flank slide

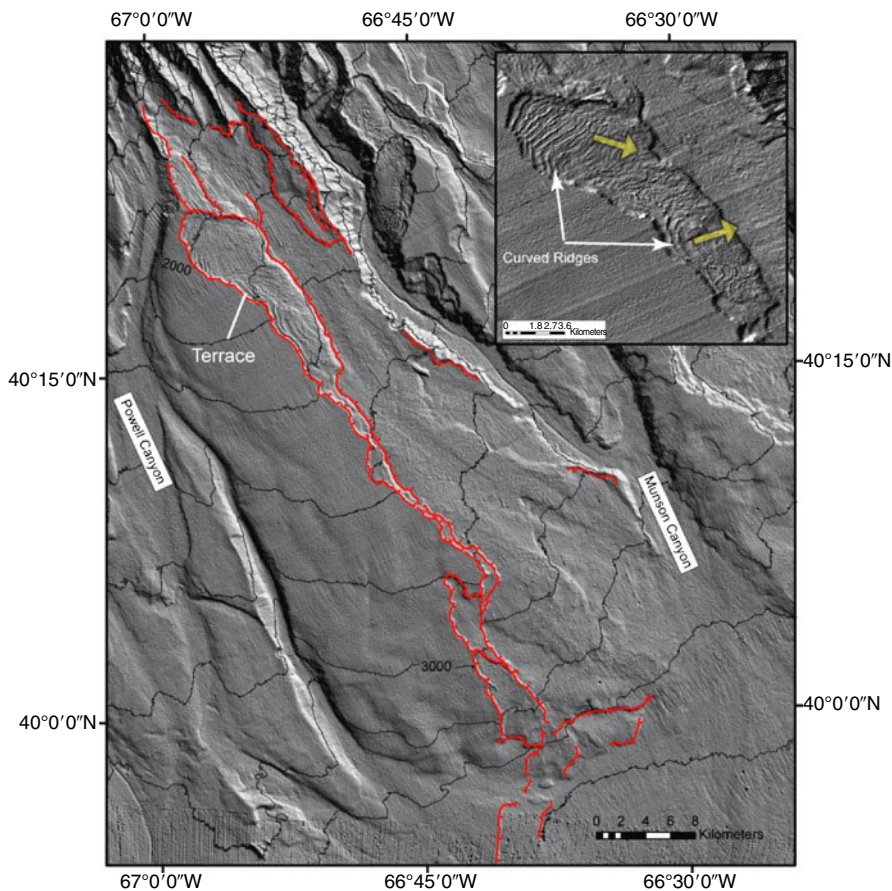


Fig. 12.4 Shaded-relief bathymetry of the Retriever landslide scar (evacuation zone). The head-wall and sidewalls are marked by the *red lines*. The *inset* shows the curved debris ridges/troughs on the terrace, with the *yellow arrows* indicating the direction of flow of the ridges

forms a prominent lobe at the base of the evacuation zone, infilling and blocking the channel. Beyond this, debris deposits extend at least 50 km downslope from the base of the evacuation zone, infilling slope and rise channels and partially burying the base of Picket Seamount. At present, it is not clear whether these deposits are the result of a single or multiple landslide events.

12.2.2 *Retriever Slide*

The Retriever slide is located immediately adjacent to the western edge of Munson Canyon (Fig. 12.4). The evacuation zone of the Retriever slide has similar downslope and across slope dimensions as the Munson-Nygren slide, a downslope length of

approximately 62 km and an average width of approximately 12 km. Along the deepest section of the evacuation where the eastern margin merges with Munson Canyon, the width is 16 km. The area of the Retriever slide evacuation zone (728 km²) is similar to that of the Munson-Nygren slide (973 km²), but the 30 km³ volume is an order of magnitude smaller, reflecting different evacuation depths. The gradient of the seafloor, as measured down the main axis of the evacuation zone is 1.4°, essentially the same as that measured for the Munson-Nygren slide.

Unlike the Munson-Nygren slide to its north, the Retriever slide does not have a clearly defined headwall, but rather has a discontinuous, low-relief scarp that forms the shallowest part of the evacuation zone (minimum headwall depth of approximately 1,780 m). This upper scarp of the Retriever slide cuts numerous gullies and ridges along the lower slope, attaining a maximum height of not more than 150 m. From the bathymetry, it is not evident if the discontinuous morphology of the headwall is original or if it has undergone post failure modification (e.g., renewed canyon incision). Except for the upper 15 km of the slide, significant sidewalls are only present along the western margin of the evacuation zone, with only a low-relief lip present along its eastern side where it flanks Munson Canyon. Sidewall scarp heights exceed 100 m along most of the evacuation zone, and as with the Munson-Nygren slide, display a stepped morphology. Below 2,600 m, a number of subdued scarps are present along the eastern margin and main axis of the evacuation zone. While these scarps may be temporally related to the most recent phase of failure, it is possible that they are relict landslide or canyon features partially covered by more recent debris deposits. Seismic reflection data show that failure deposits are present down the length of the evacuation zone, but blocky surficial deposits like those associated with the Munson-Nygren slide are largely absent on the bathymetry.

One of the most prominent feature of the Retriever slide is an elevated, approximately 15 km long terrace on the western flank of the evacuation zone that contains debris ridges up to 20 m high (Fig. 12.4). In plan view, the shape of these ridges and troughs generally conforms to the shape of the adjacent sidewall scarps. Micallef et al. (2007) described a similar ridge and trough morphology within the Storegga Slide, attributing it to a spreading mechanism.

12.2.3 *Picket Slide*

Between the Munson-Nygren and Retriever source scars lies the Picket slide (Fig. 12.5a). While this feature was initially considered to be part of the Munson-Nygren slide (O'Leary 1986a), it has well defined head and sidewalls that are adjacent to, but separate from the Munson-Nygren and the Retriever landslides. It is the smallest of the three distinct landslides, with a source evacuation area of 76 km² and a volume of 3 km³. The concave headwall of the Picket slide is at a depth of approximately 1,880 m, and has a maximum height of 100 m. The gradient of the seafloor within the excavation zone is approximately 1.7°. About 6 km downslope of the headwall, the bulk of the evacuation zone bends to the southwest towards Munson Canyon, while a narrow arm of the evacuation zone continues downslope to the

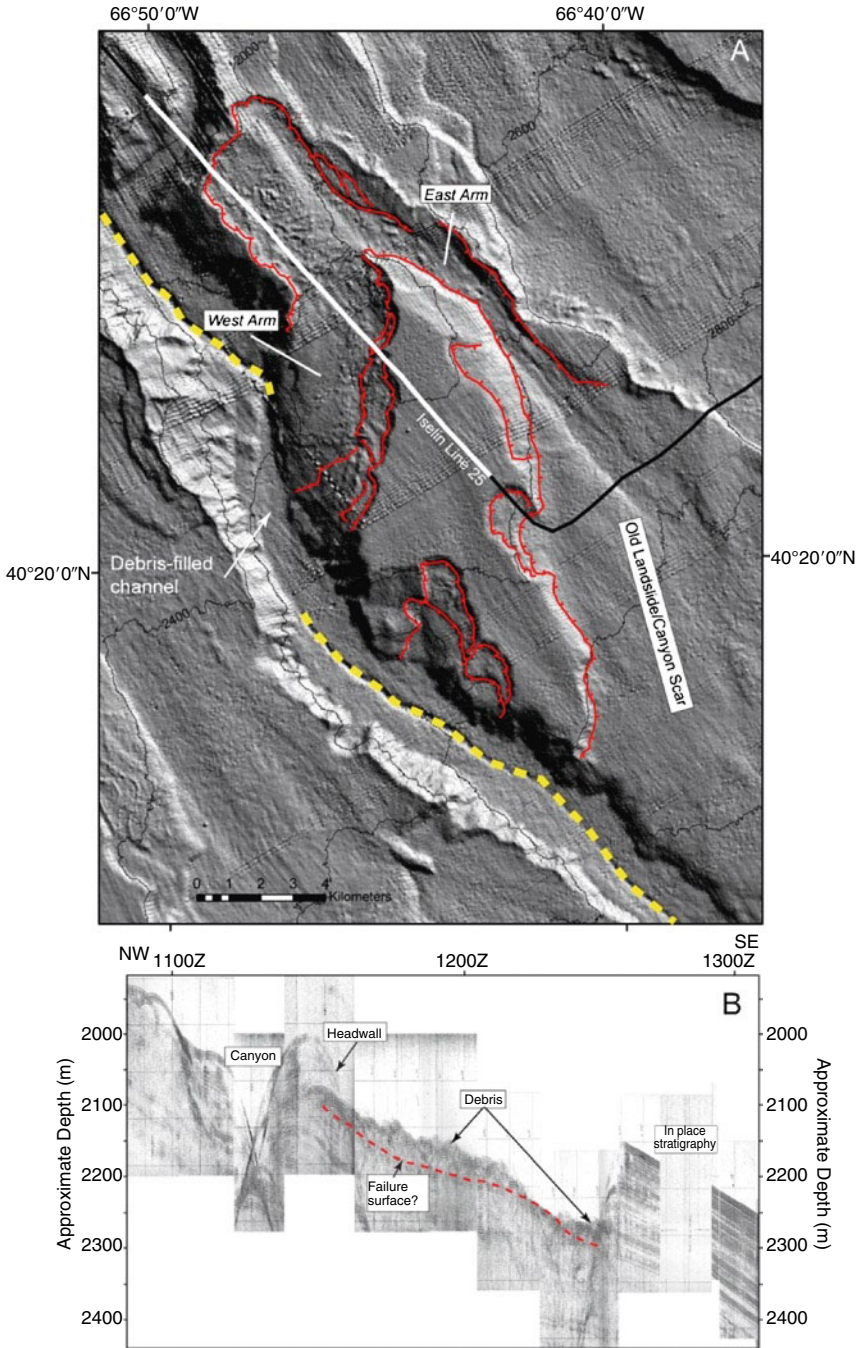


Fig. 12.5 (a) Shaded-relief bathymetry of the Picket slide. The location of the seismic profile in (b) is highlighted by the white line. Note that the thalweg of Munson Canyon (*dashed yellow line*) is cut and infilled by debris from the Picket slide; (b) A portion of Iselin air-gun line 25. Blocky debris is as much as 50 m thick. The likely failure surface is marked by the *red dashed line*

southeast (Fig. 12.5a) where it intersects a section of what appears to be an older landslide scar or buried canyon. Sidewalls along the western arm are distinctly scalloped and stepped and their heights exceed 100 m in places. The morphology of the Picket slide suggests failure occurred as a single event, with only minor secondary sidewall collapses.

Landslide deposits were funneled down both arms of the evacuation zone, but the majority of the material appears to have been focused down the southwest arm (Fig. 12.5a, b). Blocky debris deposits are present from about 2.5 km downslope of the headwall to the top of the southeastern area of the evacuation and to the toe of the debris lobe that is located in the axis of Munson Canyon. Deposits from the Picket slide completely fill the thalweg of Munson Canyon immediately below the landslide (Fig. 12.5a). The downslope extent of landslide deposits funneled down the southeastern arm is currently unknown.

12.3 Age of Slope Failure

Beyond a detailed examination of the landslide morphology, the primary interest in the reevaluation of the MNR landslide complex is the determination of the age of the failures as a means of investigating pre-conditioning factors and triggering mechanisms along the Georges Bank section of the US Atlantic margin. From the seismic reflection data, it appears that the youngest regionally correlatable units (LRU and younger) have been cut by these landslides. Because of the lack of cores collected within the evacuation and deposit zones, the absolute ages and sequencing of the landslides within the MNR complex are unknown and little is known about the characteristics of the sediments involved in the failures. That said, a first approximation of the relative age of these failures is provided by the morphology of the debris deposits and cross-cutting relationships of the landslide scars and canyons.

Blocky landslide deposits are relatively rare along the U.S. Atlantic continental margin, which is likely due to a combination of landslide age (i.e., insufficient time to be buried by younger sediments) and the mechanisms of failure (i.e., disintegration of the failed mass). The presence of blocky debris associated with the Munson-Nygren, Picket, and the terrace part of the Retriever slides suggests that these landslides may have occurred relatively recently, within the late Pleistocene-Holocene period. Furthermore, a recent age for the Picket slide is supported by the infilling of the thalweg channel of Munson Canyon directly in front of the downslope end of the western arm. Similarly, the axis of canyon below the flank slide of the Munson-Nygren slide appears to be filled with blocky debris, indicating deposition post-dates the last canyon cutting episode. Finally, debris deposits from the Munson-Nygren slide can be seen overlying and possibly cutting scars of broad continental rise landslides (Fig. 12.1) which have thick layers of recent sediment accumulated across and below them. Discontinuous landslide scars are also present on the continental rise SW of Retriever Seamount (Fig. 12.1), but the source of these draping sediments cannot be definitively identified. Additional high-resolution subbottom

profiles and coring are needed to determine the presence and thickness of recent sediment drape layers overlying each of the debris deposits.

Reevaluation of the MNR complex using the new multibeam dataset reveals that the sequence of failure of individual landslides is likely substantially more complex than previously thought (O'Leary 1986a; Twichell et al. 2009). While the reevaluation presented here supports the contention of O'Leary (1986a) that the Retriever slide (with the possible exception of the failure of the upper terrace) is the oldest of the landslides in the complex, it differs from the more detailed headwall-depth based sequencing scenario of Twichell et al. (2009) by the identification of the Picket slide as a separate slide that is the youngest of the three and a younger age for the flank slide in the Munson-Nygren complex (headwall 4A of Twichell et al.).

Acknowledgments We thank the U.S. Nuclear Regulatory Commission project N6480 for funding the 2009 multibeam data collection and analysis. The authors would like to express their appreciation to the officers and crew of the NOAA Ship Ronald H. Brown. David Mosher, Kathy Scanlon, and Emily Himmelstoss provided excellent reviews which improved many aspects of the manuscript. Any use of trade, product, or firm names is for descriptive purposes only and does not imply endorsement by the U.S. Government.

References

- Bailey NG, Aaron JM (1982a) High-resolution seismic-reflection profiles collected aboard R/V James M. Gilliss, Cruise GS-7903-3, over the Atlantic continental slope and rise off New England: USGS open-file report 82-718, 2 p
- Bailey NG, Aaron JM (1982b) High-resolution seismic-reflection profiles from the R/V Columbus Iselin, Cruise CI 7-78-2, over the continental shelf and slope in the Georges Bank area: USGS open-file report 82-607, 2 p
- Chaytor JD, ten Brink US, Solow AR, Andrews BD (2009) Size distribution of submarine landslides along the U.S. Atlantic margin. *Mar Geol* 264:16-27
- Danforth WW, Schwab WC (1990) High-resolution seismic stratigraphy of the upper continental shelf seaward of Georges Bank. USGS map, MF-2111
- EEZ-SCAN 87 (1991) Atlas of the U.S. Exclusive Economic Zone, Atlantic continental margin. USGS miscellaneous investigations series I-2054, 174 pp
- Gardner JV, Mayer LA, Armstrong AA (2006) Mapping supports potential submission to U.N. Law of the Sea. *EOS Trans Am Geophys Union* 87:157-159
- Micallef A, Masson DG, Berndt C, Stow DAV (2007) Morphology and mechanics of submarine spreading: a case study for the Storegga Slide. *J Geophys Res* 112. doi:10.1029/2006JF000739
- Mosher DC, Piper DJW, Campbell DC, Jenner KA (2004) Near-surface geology and sediment-failure geohazards of the central Scotian Slope. *AAPG Bull* 88:703-723
- O'Leary DW (1986a) The Munson-Nygren slide: a major lower-slope slide off Georges Bank. *Mar Geol* 72:101-114
- O'Leary DW (1986b) Seismic structure and stratigraphy of the New England Continental Slope and the evidence for slope instability. USGS open-file report, 86-118, 182 pp
- O'Leary DW (1988) Shallow Stratigraphy of the New England Continental Margin. USGS bulletin, 1767, 40 pp
- O'Leary DW (1993) Submarine mass movements, a formative process of passive continental margins: the Munson-Nygren complex and the southeast New England landslide complex. In: Schwab WC, Lee HJ, Twichell DC (eds) *Submarine landslides: selected studies in the U.S. exclusive economic zone*. USGS Bulletin 2002:23-39

- Poag CW (1982) Stratigraphic reference section for Georges Bank basin – depositional model for New England passive margin. AAPG Bull 66:1021–1041
- Scanlon KM (1984) The continental slope off New England: a long-range sidescan-sonar perspective. Geo-Mar Lett 4:1–4
- Tripsanas EK, Piper DJW, Jenner KA, Bryant WR (2008) Submarine mass-transport facies: new perspectives on flow processes from cores on the eastern North American margin. Sedimentology 55:97–136
- Twicheil DC, Chaytor JD, ten Brink US, Buczkowski B (2009) Morphology of late Quaternary landslides along the U.S. Atlantic continental margin. Mar Geol 264:4–15
- Zimmerman HB (1972) Sediments of the New England continental rise. GSA Bull 83:3709–3724