

Chapter 7

Using Provenance to Support Good Laboratory Practice in Grid Environments

Miriam Ney, Guy K. Kloss, and Andreas Schreiber

Abstract. Conducting experiments and documenting results is daily business of scientists. Good and traceable documentation enables other scientists to confirm procedures and results for increased credibility. Documentation and scientific conduct are regulated and termed as “good laboratory practice.” Laboratory notebooks are used to record each step in conducting an experiment and processing data. Originally, these notebooks were paper based. Due to computerised research systems, acquired data became more elaborate, thus increasing the need for electronic notebooks with data storage, computational features and reliable electronic documentation. As a new approach to this, a scientific data management system (DataFinder) is enhanced with features for traceable documentation. Provenance recording is used to meet requirements of traceability, and this information can later be queried for further analysis. DataFinder has further important features for scientific documentation: It employs a heterogeneous and distributed data storage concept. This enables access to different types of data storage systems (e. g. Grid data infrastructure, file servers). In this chapter we describe a number of building blocks that are available or close to finished development. These components are intended for assembling an electronic laboratory notebook for use in Grid environments, while retaining maximal flexibility on usage scenarios as well as maximal compatibility overlap towards each other. Through the usage of such a system, provenance can successfully be used to trace the scientific workflow of preparation, execution, evaluation, interpretation and archiving of research data. The reliability of research results increases and the research process remains transparent to remote research partners.

Miriam Ney · Andreas Schreiber

Simulation and Software Technology, German Aerospace Centre,

Berlin, Cologne, Germany

e-mail: NeyMiriam@googlemail.com, Andreas.Schreiber@dlr.de

Guy K. Kloss

School of Computing + Mathematical Sciences, Auckland University of Technology,

Auckland, New Zealand

e-mail: Guy.Kloss@aut.ac.nz

7.1 Introduction

With the “Principles of Good Laboratory Practice and Compliance Monitoring” the OECD provides research institutes with guidelines and a framework to ensure good and reliable research. It defines “Good Laboratory Practice” as “*a quality system concerned with the organisational process and the conditions under which non-clinical health and environmental safety studies are planned, performed, monitored, recorded, archived and reported*” (p. 14 in [8]). This definition can be extended to other fields of research. To prove the quality of research is of relevance for credibility and reliability in the research community. Next to organisational processes and environmental guidelines, part of the good laboratory practice is to maintain a laboratory notebook when conducting experiments.

The scientist documents each step, either taken in the experiment or afterwards when processing data. Due to computerised research systems, acquired data increases in volume and becomes more elaborate. This increases the need to migrate from originally paper-based to electronic notebooks with data storage, computational features and reliable electronic documentation. For these purposes suitable data management systems for scientific data are available.

7.1.1 A Sample Use Case

As an example use case a group of biologists are conducting research. This task includes the collection of specimen samples in the field. Such samples may need to be archived physically. The information on these samples must be present within the laboratory system to refer to it from further related entries. Information regarding these samples possibly includes the archival location, information on name, type, date of sampling, etc.

The samples form the basis for further studies in the biological (wet) laboratories. Researchers in these environments are commonly not computer scientists, but biologists who just “want to get their research done.” An electronic laboratory notebook application therefore must be similarly easy to operate in day-to-day practice like a paper-based notebook. All notes regarding experimentation on the samples and further derivative stages (processing, treatments, etc.) must be recorded, and linked to a number of other artifacts (other specimen, laboratory equipment, substances, etc.).

As a result of this experimentation further artifacts are derived, which need to be managed. These could be either further physical samples, or information (data, measurements, digital images, instrument readings, etc.). Along with these artifacts the team manages documents outlining the project plan, documents on experimental procedures, etc.

In the end every managed artifact (physical or data) must be linked through a contiguous, unbroken chain of records, the provenance trail. The biologists in our sample use case cooperate with researchers from different institutes in different (geographical) locations. Therefore, the management of all data as well as provenance must be enabled in distributed environments, physically linked through the Internet.

The teams rely on a common Grid-based authentication, which is used to authorise principals (users, equipment, services) across organisational boundaries.

The recorded provenance of all managed artifacts can be used in a variety of ways. Firstly, it is useful to document and *prove* proper scientific procedures and conduct. Beyond this compliance requirement provenance information can be used in further ways: It enables often previously not possible (or very tedious) ways of analysis. By querying the present provenance information, questions can be answered which depend on the recorded information. These questions may include some of the following:

- *Question for origin:* What artifacts were used in the generation of another artifact?
- *Question for inheritance:* What artifacts and information were generated using a given artifact?
- *Question for participants:* What actors (people, devices, applications, versions of tools, etc.) were employed in the generation of an artifact?
- *Question for dependencies:* Which resources from other projects/processes have been used in the generation of an artifact?
- *Question for progress:* In what stage of a processing chain is a given artifact? Has the process the artifact is part of been finalised?
- *Question for quality:* Did the process the artifact is part of reach a satisfactory conclusion by some given regulations or criteria?

7.1.2 Data Management with the DataFinder

In order find a solution to common data management problems, the German Aerospace Centre (DLR) – as Germany’s largest research institute – developed an open source data management application aimed at researchers and engineers: *DataFinder* [17, 20]. *DataFinder* is a distributed data management system. It allows heterogeneous storage back-ends, meta-data management, flexible extensions to the user interface and script-based automation. To implement required features for reliable and auditable electronic documentation provenance technologies can be used [5].

When analysing the data management situation in scientific or research labs, several problems are noticeable:

- Each scientist individually is solely responsible for the data generated and managing it as deemed fit. Often others cannot access it, and duplication of effort may occur.
- If a scientist leaves the organisation, it is possible that no one understands the structure of the data left behind. Information can be lost.
- Researchers often spend a lot of time searching for data. This waste of time decreases productivity.
- Due to long archiving periods and an increasing data production rate, the data volume to store increases significantly.

To overcome this situation common in many research institutes, the DLR facility Simulation and Software Technology has developed the scientific data management system DataFinder (cf. [20]).

7.1.2.1 General Concepts

DataFinder is an open source software written in Python. It uses a server and a client component. The server component holds data and associated meta-data. Data and meta-data is aggregated in a shared data repository and accessed and managed through the client application. Fig. 7.1 shows the user interface of the DataFinder, when connected to a shared repository.

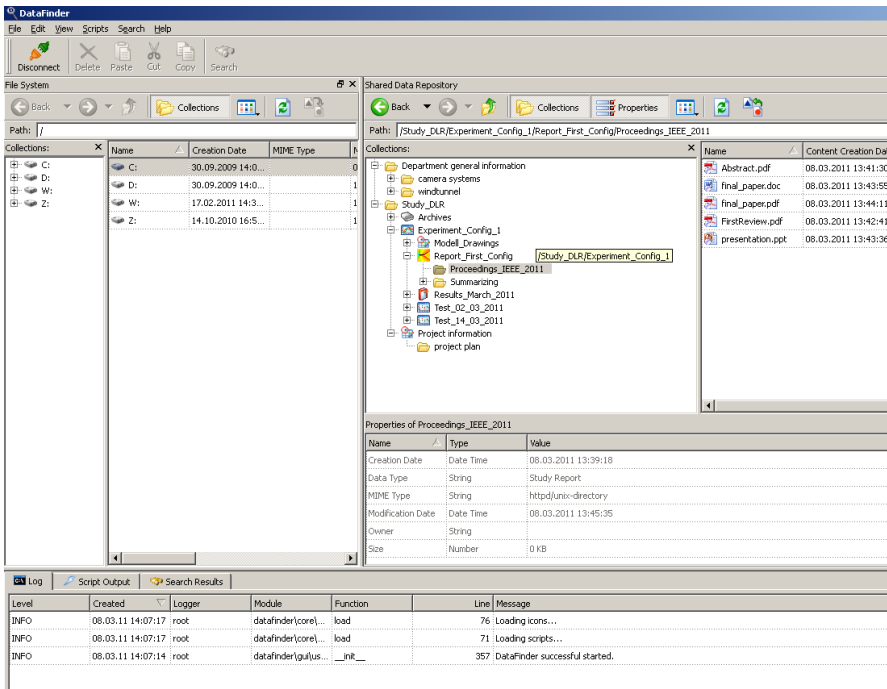


Fig. 7.1 User interface of the DataFinder.

It is designed similar to a file manager on common operating systems. The left hand side presents the local file hierarchy, and the right displays the shared repository. All data on the server can be augmented with arbitrary meta-data. Common actions available for both sides are: open, copy, paste, import and export data. Opening an entry will make an attempt to use the local system's default association for a file. These operations are all essential due to the nature of DataFinder being a data management tool. One must be aware that on some operations (e. g. copying) provenance related information is not copied with it. Copying would create a fork in the

provenance graph to create a duplicate of a formerly uniquely referenced artifact. Special treatment to treat these cases in a way as to extend the graph properly are not in place, yet.

An advantage of DataFinder is, that an individual data model is configured for a shared repository, which must be followed by all its users. A data model defines the structure of collections. Collections can contain (configurable) allowed data types, that can be inserted into the collection. The data model also defines a pre-defined meta-data structure for these collections. This meta-data can be specified to be either optional or mandatory information when importing a data item. Based on the data model, data can be managed on a heterogeneous storage system (certain data items stored in different storage sub-systems, see 7.1.2.2). This requires that DataFinder provides the ability to manage data on different storage systems, under the control of a single user interface under a single view (even within the same collection).

Lastly, it is the possibility to extend the application with Python scripts. This enables a user to take advantage of more customised features, such as tool integration, task automation, etc.

The DataFinder-based system aims at providing many options and to be highly extensible for many purposes. DataFinder is already in use in different fields of research. New use cases are identified and extensions implemented frequently. One of these is the new use case for supporting a good laboratory practice capable notebook as outlined in this chapter.

7.1.2.2 Distributed Data Storage

One of the key features of DataFinder is the capability to use different distributed, heterogeneous storage systems (concurrently). A user has the freedom to store data on different systems, while meta-data for this data can be kept either on the same or on a different storage system.

Possible data storage options can be accessed for example through: WebDAV, Subversion, FTP, GridFTP. Other available storage systems possibilities are Amazon S3 Cloud services as well as a variety of hosted file systems. Meta-data for systems not capable of providing extensive free-form meta-data is managed centrally with another system. Such systems then are accessed through meta-data capable protocols like WebDAV or Subversion. Further storage back-ends are relatively simple to integrate, due to the highly modular factory design of the application. This design feature of DataFinder will be further examined in Sect. 7.3 for the integration of a distributed Grid data storage infrastructure.

It must be noted at this point however, that DataFinder is responsible for maintaining consistently managed data. DataFinder uses these protocols and systems for this purpose. If data is accessed *without* using the DataFinder directly on the server through other clients, data policies may be compromised (due to different access restrictions), or consistency may be compromised (with writing access to the storage systems). With certain caution, this can however be used to integrate other (legacy) systems into the overall concept.

Due to the design of the DataFinder it is further possible to manage physical (real world) items, such as laboratory analysis samples or offline media (e. g. video tapes, CDs, DVDs). Physical items can be stored on shelves, or archived in any other way. These can be valuable artifacts for research, and the knowledge of their existence as well as their proper management is a common necessity. Therefore, it is crucial to managed them electronically in a similar fashion by the same management tools. Doing so enables extensive meta-queries provided by the DataFinder, taking advantage of utilising the search capabilities over all managed items in the same way. Furthermore, this enables to reference them consistently in provenance assertions from within the realm of the provenance enabled system.

7.1.3 Overview

This chapter ties the link between the existing DataFinder application to convert it into a tool useful for a good laboratory practice compliant electronic notebook. It will introduce how DataFinder can be combined with provenance recording services and (Grid) storage servers to form the back bone of such a system. The concept of DataFinder is to be a system that can be customised towards different deployment scenarios, it is to support the researchers or engineers in *their* way of working. This includes the definition of a data storage hierarchy, required meta-data for storage items and much more, usually alongside with customisation or automation scripts and customised GUI dialogues. In a similar fashion, DataFinder can be used to construct an electronic laboratory notebook with provenance recording for good laboratory practice. Again, to do so one creates the required data models and customises GUI dialogues to suit the purpose.

The used provenance technologies and their applications are described in Sect. 7.2. Concepts to integrate Grid technologies for scientific data management are outlined in Sect. 7.3. Sect. 7.4 presents the results of integrating the good laboratory practice into a provenance system as well as a data management system. It also provides a solution on how to connect these two system practically. Finally, the concept of the resulting system of an electronic laboratory notebook is evaluated.

7.2 Provenance Management

Provenance originates from the Latin word: “provenire” meaning “to come from” [11]. It is described as “the place that sth. originally came from” thus the origin or source of something (cf. [22]). It was originally used for art, but other disciplines adapted it for their objects, such as fossils or documents. In the field of computer science and data origin it could be defined as:

“The provenance of a piece of data is the process that led to that piece of data.” [12]

Based on this understanding, approaches for identifying provenance use cases for modeling processes and for integrating provenance tracking into applications are

developed. Also, concepts to store and visualise provenance information are investigated. An overview of the different areas of provenance gives Fig. 7.2.

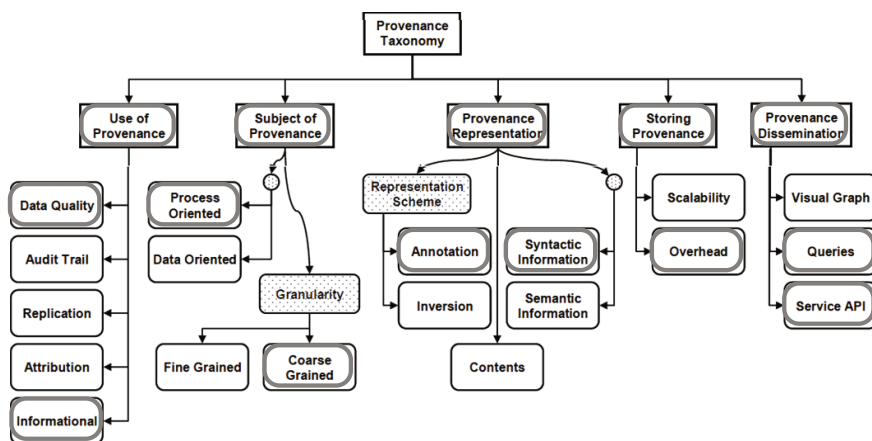


Fig. 7.2 Provenance taxonomy according to [19].

The figure shows five major areas: *Usage*, *Subject*, *Representation*, *Storage* and *Dissemination*. [19] gives a detailed description on each area and their subdivisions. In this application, embedded provenance tracking in the data management system enables DataFinder to provide information about the chain of steps or events leading to a data item as it is. The following list outlines relevant elements of the taxonomy from Fig. 7.2 (additionally framed elements):

Use of provenance: Provenance is used to present *information* of the origin of the data, but also to provide *data quality*.

Subject of Provenance: The subject is the *process* of conducting a study or experiment. It is focused on documentation. To identify the subject further, the Provenance Incorporating Methodology (PrIME, Sect. 7.4.1) is used.

Provenance Representation: Provenance information will be represented in an *annotational* model, based on the Open Provenance Model (OPM, Sect. 7.2.1) and it will mainly hold *syntactic information*.

Storing Provenance: Provenance information will be stored in the prOOst (Sect. 7.2.2) system (can also hold additional information).

Provenance Dissemination: To extract provenance information, the provenance system can be queried using a graph traversal language (Sect. 7.2.2.2).

The main concepts of OPM and the provenance system prOOst are described in the following sections, whereas PrIME is discussed in the scope of applying the technical system to the domain of good laboratory practice in Sect. 7.4.

7.2.1 OPM – Open Provenance Model

The Open Provenance Model [13] is the result of the third “provenance challenge” efforts [18] to provide an interchangeable format between provenance systems. In its core specification, it defines elements (nodes and edges) to describe the provenance of a process.

Nodes can be *processes*, *agents/actors* and *artifacts/data items*. The nodes can be connected through edges, such as “*used*”, “*wasUndertakenBy*”, “*wasTriggeredBy*”, “*wasDerivedFrom*” and “*isBasedOn*”. Each edge is directed, clearly defining the possible relations within a provenance model. Each node can be enriched by annotations. Fig. 7.3 gives an example for conducting experiments in a biological laboratory and it shows the usage of the model notation. In the example, a scientist (actor) discovers a biological anomaly (controls the process of thinking and inspiration). So he starts experimenting (triggered by the discovery). For it to produce research results (derived from experimenting), he needs (uses) specimen samples to work on. If the results show a significant research outcome, a research paper can be written (based on) the results.

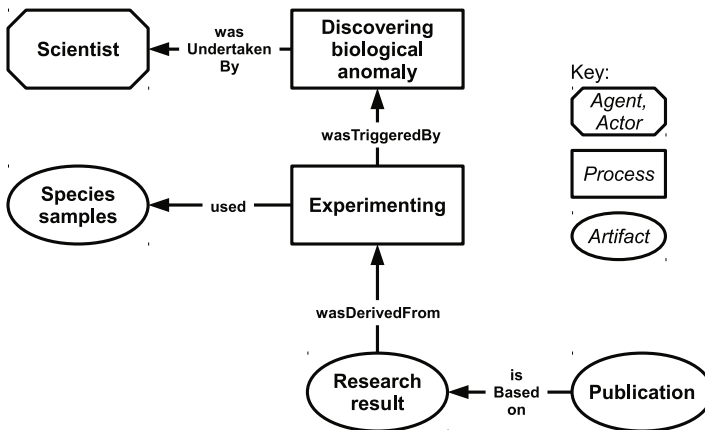


Fig. 7.3 Example a biological study as an OPM model.

7.2.2 Provenance Storage with proOost

Groth et al. describe in [6] theoretically the architecture of a provenance system. In [14] the representation of a provenance system is described as follows: A provenance aware application sends information of interest to the provenance store. From this store inquiries and information is gathered, and possibly given back to the application.

To record the information, different approaches have been investigated. In [7] four different realisations are discussed: Relational, XML with XPath, RDF with SPARQL and semi-structured approaches. They conclude semi-structured

approaches to be most promising. In semi-structured systems, the used technology has no formal structure, but it provides means of being queried.

This work uses a semi-structured approach for the provenance storage system *prOost*. It uses the graph database “Neo4j” [3] for storage and the graph traversal language “Gremlin” [1] for querying. Furthermore, it provides a REST interface to record data into the store, and a web front end to query the database. The *prOost* provenance system was published under the Apache license in July 2011 on SourceForge.¹

It is not the first implementation using a graph database for storage technology. In [21] this approach was already successfully tested. Neo4j was chosen as it is a robust, performant and popular choice for graph storage systems. Additionally it readily connectible with the suitable Gremlin query system to meet our requirements. Further discussions on alternative storage or query systems are outside the scope of this chapter. Further information on the implementation of OPM model provenance assertions using these systems are described in the following two sections.

7.2.2.1 Graph Database: Neo4j

“Neo4j is a graph database, a fully transactional database that stores data structured as graphs.” (cf. [3])

An advantage of graph databases like Neo4j is that they offer very flexible storage models, allowing for a rapid development. Neo4j is dually licensed (AGPLv3 open source and commercial).

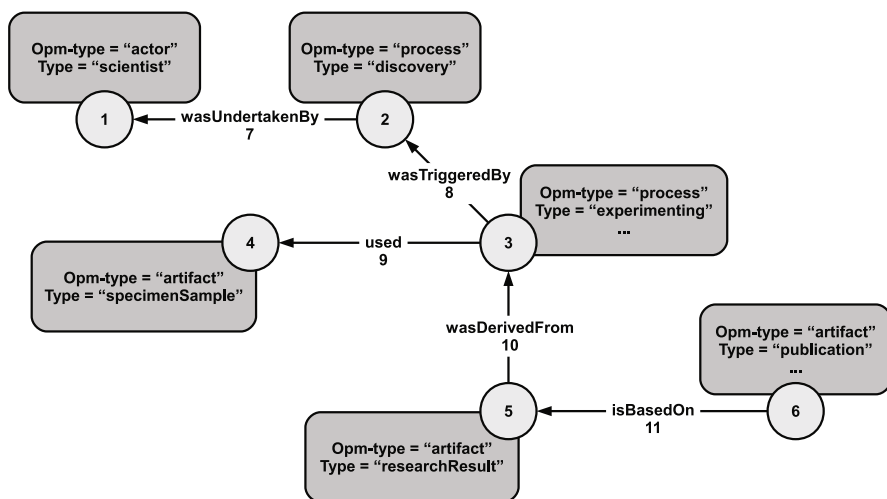


Fig. 7.4 OPM example in Neo4j.

¹ <http://sourceforge.net/projects/proost/>

Modelling OPM using Neo4j is described in more detail in [23]. Fig. 7.4 shows the previous example (from Fig. 7.3) modelled as an OPM graph. Each element is represented by a node (vertex) in the database. Nodes are indexed according to the Neo4j standard. The nodes can be annotated with further (OPM specific) information, such as “process” or “artifact”. Analogously, also the edges connecting the nodes are indexed and annotated with a label (the OPM relationship).

7.2.2.2 Query Language: Gremlin

“Gremlin is a graph traversal language” [1]. Gremlin already provides an interface to interact with the Neo4j graph database. The following example shows its use for querying Neo4j on the example database, searching for the names (identifiers) of all discoveries of a certain scientistX:

```
$_g := neo4j:open('database')
$scientists := g:key($_g, 'type', 'scientist')
$scientistX := g:key($scientists, 'identifier', 'scientistX')
$discoveries := $scientistX/inE/inV[@identifier']
```

7.3 Distributed, Scientific Data Management

The previous sections have discussed the technical means to manage data on the user side (DataFinder) and to store and query the provenance information. As indicated, DataFinder can handle a variety of different data storage servers. However, to store data and its associated meta-data on the same system, and to take full advantage of Grid technologies for cross-organisational federated access, a suitable data storage service has to be chosen. For the example use case of the team of biologists, federated access management (e. g. through Shibboleth²) and integration with further Grid-based resources would be desired (e. g. for resources to compute on sequenced genome data).

An electronic laboratory notebook system is a data management system, only with the particular needs towards managing the experimental and laboratory relevant data in a suitable fashion. This can generally be accomplished by tweaking a generic storage system for data and (extensive) associated meta-data towards the use case for supporting good laboratory practice. This section therefore mainly raises the questions towards the use of such storage systems in Grid-based environments.

Various ways are possible to envision for making relevant data available to researchers in distributed teams. Commonly encountered mechanisms in such (Grid) research environments are based on top of GridFTP (the “classic” Grid data protocol) or WebDAV (extension to the HTTP protocol). In some environments more full featured infrastructures, like iRODS³ have been deployed. One such environment is the New Zealand based “Data Fabric” – as implemented for the New Zealand eScience Infrastructure (during the recently concluded BeSTGRID project). iRODS

² <http://shibboleth.internet2.edu/>

³ <http://www.irods.org/>

offers data replication over multiple geographically distributed storage locations, with one centralised meta-data catalogue. Its data is exposed through the iRODS native tools and libraries, as well as through WebDAV (using Davis⁴), a web-based front-end and GridFTP (through the Griffin GridFTP server [24, 25] with an iRODS back-end using Jargon⁵).

7.3.1 *Integration of Existing Storage Servers*

We are discussing data integration solutions according to the above mentioned scenario of the New Zealand Data Fabric. From this, slight variations of the setup can be easily extrapolated.

Three obvious possibilities exist to use this type of infrastructure for provenance enabled data management and/or as a laboratory notebook system for distributed environments. For all these, users need to be managed and mapped between multiple systems, as iRODS introduces its own mandatory user management. This may only be required for the storage layer, but it does introduce a redundancy. The options are discussed in the following paragraphs.

The easiest, and directly usable, way is to integrate this Grid Data Fabric as an external *WebDAV* data store, using the existing persistence module. Even though WebDAV is a comprehensive storage solution for the DataFinder for data and meta-data, this service layer on top of iRODS does not permit the required WebDAV protocol means to access the meta-data. An additional meta-data server is required, and therefore potentially multiple incompatible and separate sets meta-data may exist for the same data item stored. Unfortunately this WebDAV service does not use the full common Grid credentials for access, but is limited to MyProxy⁶ based authentication as a work around.

As the next step up, DataFinder can be equipped with a *GridFTP* back-end in its persistence layer. Such a module was already available for a previous version (1.3) of DataFinder, and only requires some porting effort for the current (2.x) series. Again, GridFTP is only able to access the payload data, and is not capable to access any relevant meta-data, resulting in the need of an additional and separate meta-data service. An advantage is that this solution uses the common Grid credentials for authentication.

Lastly, the development of a native *iRODS* storage back-end based on the txIRODS Python bindings⁷ is a possibility. This solution could also use the iRODS meta-data capabilities for native storage on top of the payload data storage. Unfortunately, this last solution also requires the use of the native iRODS user credentials

⁴ WebDAV-iRODS/SRB gateway:

<http://projects.arcs.org.au/trac/davis/>

⁵ <https://www.irods.org/index.php/Jargon>

⁶ Software for managing X.509 Public Key Infrastructure (PKI) security credentials:

<http://grid.ncsa.illinois.edu/myproxy/>

⁷ <http://code.arcs.org.au/gitorious/txirods>

for accessing the repository, as it is completely incompatible to any of the common Grid authentication procedures.

The above mentioned scenarios can be freely modified, particularly the first two regarding their underlying storage infrastructure. One could deploy other storage systems that expose access using WebDAV or GridFTP as service front ends for simplicity, potentially sacrificing any of the other desired features of iRODS like cross-site replication.

When sketching out a potential deployment, the above mentioned scenarios did not strike us as being particularly nice to implement or manage. Several shortcomings were quite obvious. Firstly, the central meta-data catalogue, which can turn out to be a bottle neck. Particularly meta-data heavy scenarios requiring extensive queries on meta-data would suffer due to increased latencies. Secondly, the iRODS system provides a multitude of features, which make the system implementation as well as its deployment at times quite convoluted. A simpler, more straight forward system is often preferred. Lastly, multiple user management systems can be an issue, particularly if this includes the burden of mapping between, particularly if they are based on different concepts. Grid user management is conceptually based on cross-organisational federation, including virtual organisations (VOs) and delegation using proxy certificates, which cannot be neatly projected to other user concepts as implemented by iRODS.

7.3.2 Designing an Alternative Storage Concept – MataNui

The idea for an alternative storage solution came up, which is simpler and a better “Grid citizen.” For performant storage of many or large files inclusive meta-data, the NoSQL database MongoDB with its driver side file system implementation “GridFS” seemed like a good choice. A big advantage of this storage concept is, that MongoDB can perform sharding (horizontal partitioning) and replication (decentralised storage with cross-site synchronisation) “out of the box.” Therefore, the only concerns to target were to provide suitable service front-ends to the storage sub-system, to offer the capabilities for the required protocols and interfaces to the DataFinder. This means that research teams can opt for running local server instances (alternatively to accessing a remote server) for an increase in performance as well as decrease in latencies. This local storage sub-system also increases data storage redundancy, which leads to a better fault protection in cases of server or networking problems. Each storage server individually can be exposed through different service front-ends, reducing bottle necks. These service front-ends can be deployed in a site specific manner, reducing the number of server instances to those required for a site.

This distributed storage concept for data and meta-data, complimented by individual front-end services in a building block fashion, has been dubbed “MataNui” [10]. The MataNui server [9] itself provides full access to all content, including server side query capability and protection through native Grid (proxy) certificate authentication (X.509 certificates). As the authentication is based on

native Grid means, it is obvious to base the user management on Grid identities as well, the distinguished names (DN) of the users. MataNui is based on a REST principle based Web Service (using JSON encoding), and is therefore easy to access through client side implementations.

Exposing further server side protocols is done by deploying generic servers, that have been equipped with a storage back-end accessing the MataNui data structures hosted in the MongoDB/GridFS containers. It was relatively simple to implement the GridFTP protocol server on the basis of the free and open Griffin [24, 25] server. A first beta development level GridFS back-end is already part of the Griffin code base. Possibly later a WebDAV front end is going to be implemented, equipping one of the quite full featured Catacomb⁸ or LimeStone⁹ servers with a GridFS back-end for data and meta-data. Such servers then could also be used to access (and query) the meta-data through the WebDAV protocol, if the storage back-end supports this. Lastly, it is even possible to use a file system driver to mount a remote GridFS into the local Linux/UNIX system. However, access control to the content is provided through the services on top of the MongoDB/GridFS server. Therefore, this will likely circumvent any protective mechanisms. A better solution would be to mount a WebDAV exposed service into a local machine's file system hierarchy.

Access through protocols as GridFTP and WebDAV is quite straight forward through various existing clients in day-to-day use within the eResearch communities. This is different with the MataNui RESTful service. As outlined in Sect. 7.3.1 already, the DataFinder can be quite easily extended towards providing further persistence back-ends, like a potential iRODS back-end. In a similar fashion a MataNui REST service client back-end can be implemented. The big difference being, that it does not require any external modules that are not well maintained. It can mainly be based on the already available standard library for HTTP(S) server access, with the addition of suitable cryptography provider for extended X.509 certificate management. This can be done either by simply wrapping the OpenSSL command line tool or by using one of the mature and well maintained libraries such as pyOpenSSL.¹⁰

This modularity of service front-ends leaves administrators the option to set up sites with exactly the features required locally. However, in a global perspective, MataNui enables a new perspective on the functionality of a data fabric for eResearch. Fig. 7.5 provides a conceptual overview of how such a distributed data repository can be structured. Every storage site requires an instance of MongoDB with GridFS. These are linked with each other into a replication set (with optional sharding). The storage servers for the different sites expose the repository through one or more locally hosted services, such as the MataNui RESTful Web Service, a GridFTP server, etc. These services can be accessed by clients suitably equipped for the particular service. Clients, such as the DataFinder, may require an additional implementation for a particular persistence back-end. Some of these clients (e. g. DataFinder or a WebDAV client) may be equipped to take advantage of the full meta-data capabilities of the data fabric, whereas others (e. g. GridFTP or file system

⁸ <http://catacomb.tigris.org/>

⁹ <https://github.com/tolsen/limestone>

¹⁰ <https://launchpad.net/pyopenssl>

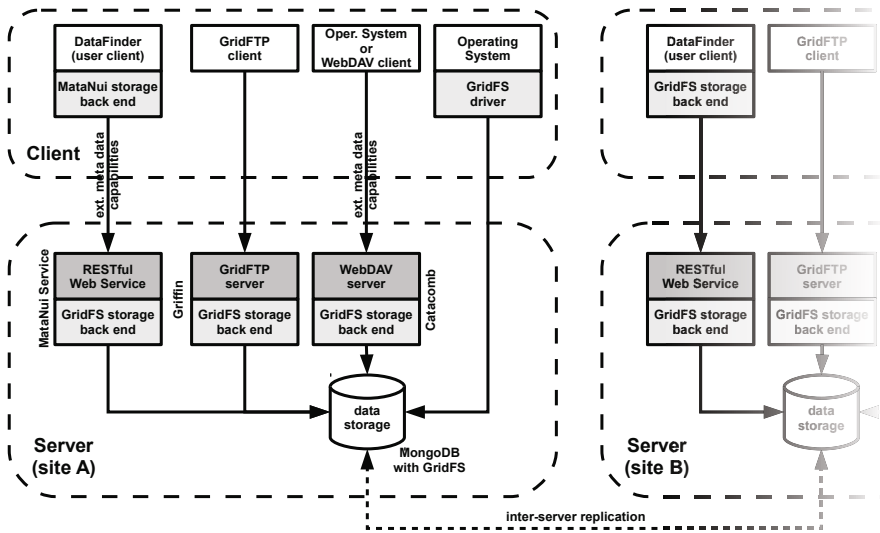


Fig. 7.5 Conceptual links between components in a Grid-based data fabric to support researchers in distributed environments. The system provides for decentralised access to geographically distributed data repositories, while enabling administrators to only expose local storage through service front-ends as required.

mounted WebDAV) may only access the data content along with some rudimentary system meta-data (time stamp, size, etc.).

In a scenario like this data and its meta-data can be managed in the distributed environment through DataFinder. Seamless integration when working with other Grid resources is unproblematic: All systems share the same type of credentials, and data can be transferred between Grid systems directly through GridFTP without the need of being routed through the user's workstation.

7.4 Results

The following describes the application of the previously discussed technologies to implement the provenance enabled electronic laboratory notebook. For this also the data management system DataFinder requires customisation (through Python script extensions) to suit the users' needs. It is enhanced with features to trace documentation.

First the development of the provenance model for good laboratory practice by means of the PrIME methodology is described in Sect. 7.4.1. Required modifications applied in the DataFinder code are outlined in Sect. 7.4.2. Sect. 7.4.3 evaluates the integration of DataFinder for the purpose of use as an electronic laboratory notebook in a final system. More information on this evaluation can be found in [16]. Lastly, Sect. 7.4.4 gives an outlook on improving DataFinder in its role as an electronic

laboratory notebook, as well as on deploying such an infrastructure fully to Grid environments.

7.4.1 *Developing a Provenance Model for Good Laboratory Practice*

Munroe et al. [15] developed the PrIME methodology to identify parameters for “provenance enabling” applications. These parameters then can be used to answer provenance questions. A provenance question usually identifies a scenario, in which provenance information is needed. Questions relevant for the analysis, are for example: “Who inserted data item X?”, “What data items belong to a report X?” and “What is the logical successor of data item X?”.

This approach was modified (in [23]), as it used the older p-assertion protocol (p. 15 in [23] and p. 2 in [15]) instead of the now more common Open Provenance Model (OPM) [13]. The p-assertion protocol is similar in use to OPM, so the approach can easily be adapted. The following list describes the three phases of the adapted PrIME version in correspondence to the PrIME structure from Fig. 7.6:

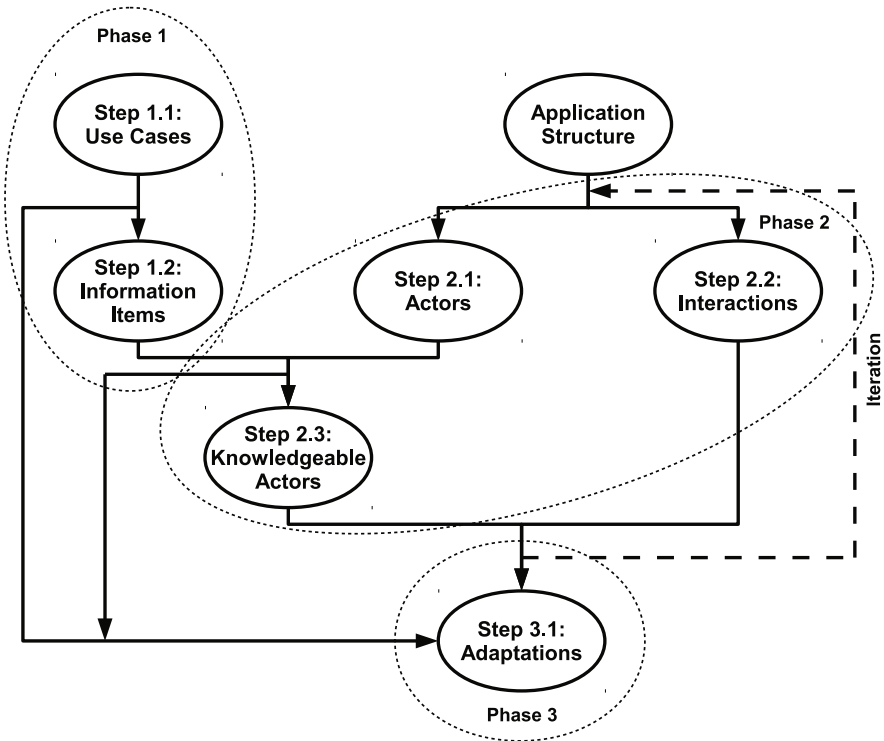


Fig. 7.6 Structure of PrIME approach [15].

Phase 1: “In phase 1 of PrIME, the kinds of provenance related questions to be answered about the application must be identified” [15] (p. 7). First, provenance *questions* are determined. Then, corresponding *data items/artifacts* that are relevant to the the answer, are investigated.

Phase 2: *Sub-processes, actors and interactions* are identified in phase 2. The sub-processes are part of the adaptation (Step 2.1). Actors generate data items or control the process. Relations between sub-processes and data items are defined as interactions (Step 2.2). Actors, processes and interactions are modeled with OPM.

Phase 3: The last phase finally adapts a system to the provenance model. In this phase, the provenance store is populated with information from the application. In the discussed scenario, this is accomplished via REST requests to the storing system.

Some exemplary questions that could be relevant in the sample use case have already been given in Sect. 7.1.1. After analysing the questions, participating processes need to be identified. A scientific experiment for which documentation is provided can be divided into five sub-processes:

1. Preparation of the experiment, generating a study plan.
2. Execution of the experiment according to a study plan, generating raw data.
3. Evaluation of raw data, making them processable for interpretation.
4. Interpretation of data, publishing it or processing the data further.
5. Preservation of the data according to regularities.

The very generic nature of these sub-processes is mandated by the OECD principles of good laboratory practice [8]. Obviously, researchers can augment each of these with further internal sub-processes as required by the project or studies undertaken.

These sub-processes are modeled with the Open Provenance Model (OPM). Fig. 7.7 shows the model in OPM notation for good laboratory practice. The five rectangles in the figure symbolise the above mentioned sub-processes. Data items/artifacts are indicated by circles: These are managed by the DataFinder. Lastly, the octagons represent the actors controlling the processes.

Provenance information is gathered in the data management system on data import and modification. Then – according to the provenance model – this information is sent to a provenance storage system (as described in Sect. 7.2).

7.4.2 Adjustments for Good Laboratory Practice in the DataFinder

To use the DataFinder as a supportive tool for good laboratory practice, a new data model and Python extensions were developed. The main part of the data model is presented in Fig. 7.8.

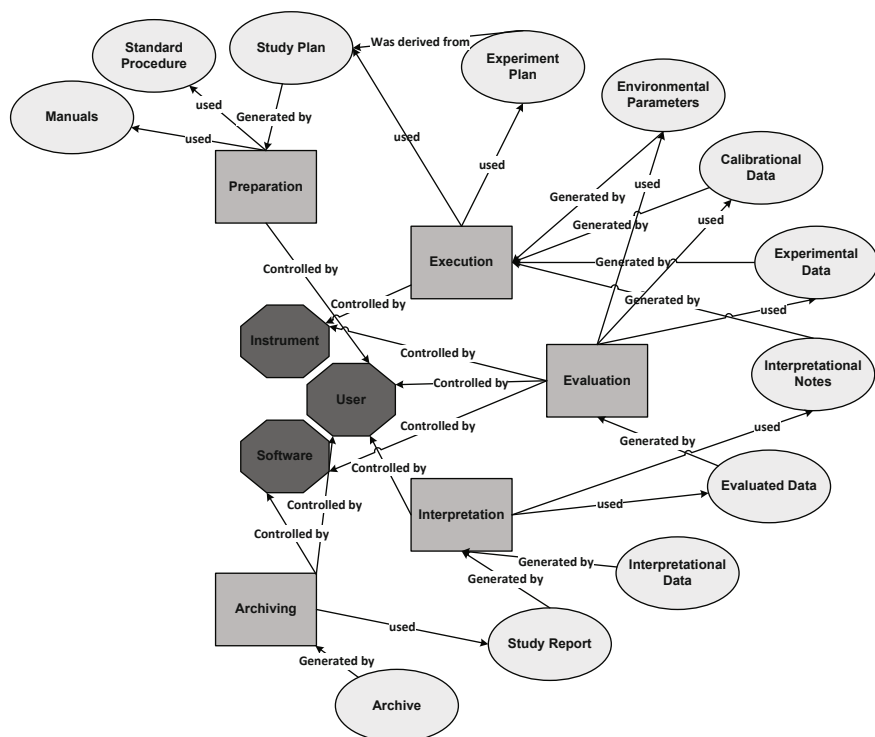


Fig. 7.7 OPM for scientific experiment documentation.

The model is derived through requirements analysis in [8]. It divides the data into the five major categories according to Sect. 7.4.1: Preparation, execution, evaluation, interpretation and archiving. All experiments pass through these categories in their five processes. Each process needs or generates different types of data. Data is aggregated in (nested) *collections*, the data repository equivalent of directories in a file system. Collections representing these processes aggregate data items belonging to that process. Each collection or element can mandate attached meta-data (such as type or dates). The data model also provides structural elements at a higher level of the hierarchy to differentiate between different studies and experiments. Processes and data items are reflecting the model structure in Fig. 7.7. The DataFinder repository structure is defined through its underlying data model¹¹ (implemented according to the OPM model).

In the screen shot of Fig. 7.1 at the beginning of this chapter, a user is connected to a shared repository (left side) operating on the described data model. The user now is required to organise data accumulated according to this model. For example,

¹¹ The complete data model is described in XML and available on <https://wiki.sistec.dlr.de/DataFinderOpenSource/LaboratoryNotebook>

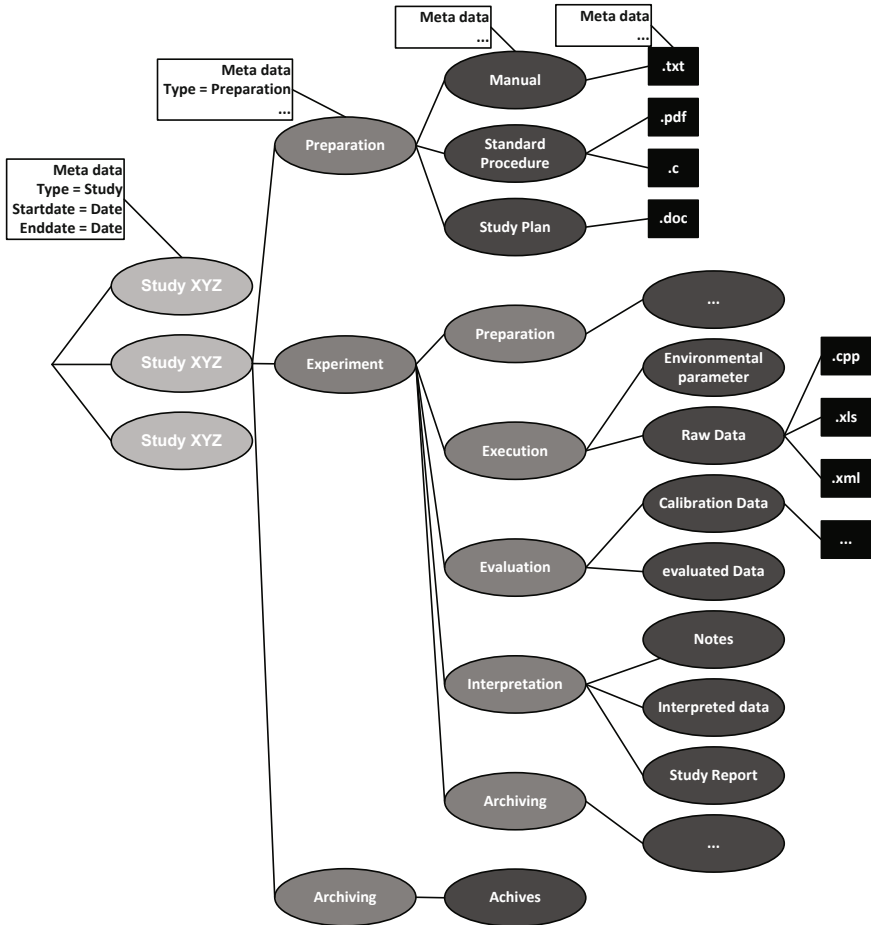


Fig. 7.8 Laboratory notebook data model used for the DataFinder.

a new collection of manuals may only be created within a parent collection of the “preparation” type. A “preparation” collection can then be either part of a “study” or “experiment.”

Three further extensions to DataFinder have been developed. They are needed to support good laboratory practice in DataFinder:

- The most important extension is an *observer mechanism*, listening on *import events* into the DataFinder. Upon the import of a new document, it reacts by prompting with a dialog asking for input items within the system that have influenced the data item/artifact. After analysing the corresponding process, the information is recorded in the provenance store.

- A second extension supports *evidential archiving*. For this the user can send an archive to an archiving service, to analyse the credibility of the archive.¹² To provide sufficient information, the user can activate a specific script extension, which generates an archive composed of information relevant to the data from information in the provenance store. The user selects a study report, and the provenance store is queried for all data items influencing the report for each step.
- Lastly, a *digital signing mechanism* was implemented through an extension, aiming at increasing credibility of data items through non-repudiation.

7.4.3 Integration Evaluation of an Electronic Laboratory Notebook

Tab. 7.1 evaluates the DataFinder concepts on the requirements defined in Chap. 3.1 of [16]. It explains how each requirement is integrated into the DataFinder system.¹³ The table shows that almost all requirements are either already currently met, are implemented through extensions as described here, or otherwise currently implemented. As a result, DataFinder can be used as laboratory notebook, supporting the concepts of good laboratory practice, and is therefore supportive to scientific working methods.

7.4.4 Outlook: Improving DataFinder-Based Laboratory Notebook

Of course the systems discussed in this chapter themselves are still research in progress and under constant development. On the one hand we can already envision a list of laboratory notebook features for desired improvements. On the other hand, this DataFinder-based laboratory notebook can be deployed to Grid environments.

7.4.4.1 Improving Laboratory Notebook Features

After the implementation, the next step is to deploy and integrate the system not only as a data management system, but as laboratory notebook to suit the needs of different organisations. For every deployment, customisation through automation scripts and specialised GUI dialogues need to be performed. Particularly for the purpose of electronic laboratory notebooks, some generic and easy integrated note editor widget would be much appreciable for free form note taking (instead of using external editors and importing the resulting data files). On a much more specialised level the following future features are considered to be beneficial to further improve the laboratory notebook functionality of DataFinder, and therefore meet the requirements of other deployment scenarios:

¹² This is not further discussed, because it is a separate project in Germany.

¹³ The table and its description is adapted from [16]

Table 7.1 Implementation of the laboratory notebook requirements into the DataFinder

Requirement	Implemented?	Details
<ul style="list-style-type: none"> ● Chain of events ● Durability ● Immediate documentation ● Genuineness ● Protocol style ● Short notes ● Verifying results 	<p>yes with extensions described here</p> <p>yes</p> <p>under development</p> <p>yes customisation issue</p> <p>yes original</p> <p>yes original</p> <p>yes (rudimentary)</p>	<p>provenance for modeling the use case and storing the information</p> <p>with extension from this application, but also through former solutions</p> <p>a web portal is implemented</p> <p>combination of work flow integration in the DataFinder and the provenance service</p> <p>can be added as files to the system</p> <p>as extra files or meta data to a data item</p> <p>signing concept and implementation as extension</p>
<ul style="list-style-type: none"> ● Accessibility ● Collaboration ● Device integration ● Enabling environmental specialisation ● Flexible Infrastructure ● Individual Sorting ● Rights/privilege management ● Variety of data formats ● Searchability ● Versioning 	<p>yes original</p> <p>yes original</p> <p>yes customisation issue</p> <p>yes customisation issue</p> <p>yes original</p> <p>partly under development</p> <p>yes under construction</p> <p>yes original</p> <p>yes original</p> <p>yes</p>	<p>open source software</p> <p>same shared repository for each user, with similar information</p> <p>integration via script API</p> <p>can be customised with scripts and data model</p> <p>client: platform independent Python application server; meta data: WebDAV or SVN (extensible); data: several (extensible)</p> <p>customising the view of the repositories is possible (but saving the settings is in planning)</p> <p>the server supports it on the client side, the integration into DataFinder is currently developed</p> <p>any data format can be integrated, opening them depends on the users system</p> <p>full text and meta data search</p> <p>SVN as storage back-end is developed to enable versioned meta data and data</p>

Mobile version of DataFinder: A mobile version of the data management system client could ease the scientist's documentation efforts when working on-site, away from the established (office, lab) environment. This way the scientist could augment data items through notes or add/edit meta-data and data on-the-fly. Requirement of immediate documentation could be met through this extension.

Automatic generation of reports: For many project leaders it is interesting or important to be kept up-to-date on the current status of a project or what their team members are currently doing. For this they can currently only access the data directly. A feature summarising current reports and gives an intermediate report, could simplify the check up. This feature was found in the evaluated laboratory notebook mblab [2].

Integrated standard procedures: In GLP, a standard procedures defines workflows for specific machines. In the laboratory notebook mblab [2] these are integrated and give the user a guideline for actions.

More elaborate signing and documenting features: Scientists discuss results of colleagues. For more collaborative work situations, DataFinder needs to be enhanced with better features for user interactions. On the one hand a discussion/commenting mechanism on data items could be supported, on the other hand a scientist can sign data and leave some kind of digital identity card. This could be used to reference a list of other items signed or projects worked on. In the evaluated laboratory software NoteBookMaker [4], a witness principle with library card is integrated. Each notebook page contains an area, where a scientist can witness (authenticate) an entry. After witnessing the data, the information of the witnessing person's identity is displayed on the corresponding page. This witnessing information is then connected to a library card listing personal information and projects.

A graphical representation: A graphical representation of the provenance information on the server or in the DataFinder can help to make provenance information visually more accessible. This integration of provenance data in DataFinder assists a user in understanding correlations between items.

Configuration options: Selecting a specific provenance or archiving system should be possible. This could be handled through a new option in the data store's configuration. Additionally a dialog prompting for this information needs to be implemented.

7.4.4.2 Migrating the Laboratory Notebook to the Grid

Sect. 7.3.2 already explains how a data management system suitable for the Grid can be constructed. The laboratory notebook system is "resting" on top of that particular data storage system, under support of a provenance store to enable provenance enabled working schemes. Therefore, the two aspects of an underlying Grid-based data storage system and of a Grid-enabled provenance store need to be discussed.

While MongoDB with GridFS is a mature product ready to deploy, the overlaying service infrastructure for a Grid-enabled data service is not quite as matured. Currently the Griffin GridFTP server [25] is in productive deployment both in the Aus-

tralian as well as the New Zealand eScience infrastructures. However the GridFS storage back-end already works, but is still only available in a beta version and needs a little further completion and testing. The situation is similar with the MataNui RESTful Web Service front end, which still needs implementation of further query functionality. Current tests of the two systems have showed that throughput bottle necks to both services currently seems mostly limited by the throughput of the underlying disk (RAID) storage system or network interface (giga-bit ethernet), while the database and service layer implementation is easily holding up even on a moderately equipped system (CPU and memory).

To access this MataNui infrastructure with the DataFinder at least one of two things still has to be implemented: The GridFTP data store back-end needs to be ported from the 1.x line of DataFinder versions, or a MataNui data store back-end needs to be implemented for the current version. For best results preferably the latter has got priority on the list of further implementations to reach this goal. Due to the nature of the service as well as the persistence abstraction in the 2.x DataFinder versions, this should be relatively straight forward. This enables DataFinder to completely retire WebDAV or Subversion as a centralised data server for data content as well as meta-data, relocating this information completely onto a Grid infrastructure.

In such a setup, DataFinder accesses the MataNui service natively, while all managed (payload) data can be accessed through GridFTP (Griffin server) for the purpose of compatibility with other Grid environments. This supports common usage for example using file staging for Grid job submission. Storage server side replication ensures seamless usage in geographically distributed research teams while retaining high throughput and low latencies through the geographically closest storage server.

The provenance store prOOst currently does not yet support access of its REST service through Grid authenticated means. Once this is implemented for the newly releases provenance store, every required service for a Grid-enabled data service with provenance capabilities, can be accessed using the same credentials and common Grid access protocols.

7.5 Conclusion

This chapter sketches a scenario of using provenance tracking with DataFinder to support good laboratory practice and to track relations between stored documents. In this scenario DataFinder is used in a distributed system together with a central provenance store. This makes it possible to access and update data from virtually anywhere with a network connection, while keeping track of all interactions with data items through recorded provenance information at any time. When implementing the laboratory notebook, stored provenance information can be queried to enable the extraction of additional valuable meta-data information on data items. As a result, provenance is successfully used to trace typical scientific workflows comprising of preparation, execution, evaluation, interpretation and archiving of research

data. The reliability – and therefore credibility – of research results is increased, and assistance to help understand involved processes is provided for the researcher.

Such a system can be implemented on top of a Grid data infrastructure, as the described MataNui system. The MataNui service is mostly functioning already, but still needs integration into DataFinder as a full-featured storage back-end for data as well as meta-data. Additionally, it is already possible to expose the data repository to Grid environments directly using the GridFTP protocol. GridFTP is commonly used for scripts, automation and compatibility with other Grid enabled tools. The overall MataNui concept has been designed to be capable of handling files large in number and size, as well as manage arbitrary amounts of meta-data associated with each data item. It is usable in distributed projects with a self-replicating, federated data infrastructure. This federation can drastically improve data access latency and throughput by connecting to a geographically close service. Through support for server side queries, meta-data searches can be processed very efficiently by avoiding transfers of potentially large numbers of data sets to a client. Lastly, the implementation of MataNui has been undertaken with the vision of it being robust as well as easy to deploy and use.

References

1. Gremlin graph traversal language Web Site, <https://github.com/tinkerpop/gremlin/wiki>
2. mblab–Das elektronische Laborbuch, <http://elektronisches-laborbuch.de/>
3. Neo4j Graph Database Web Site, <http://neo4j.org/>
4. Note Book Maker for PC and Mac, The World Leader in Virtual NoteBooks, <http://www.notebookmaker.com>
5. Buneman, P., Khanna, S., Tan, W.C.: Why and Where: A Characterization of Data Provenance. Tech. rep., University of Pennsylvania (2001), http://repository.upenn.edu/cis_papers/210/
6. Groth, P., Miles, S., Tan, V., Moreau, L.: Architecture for Provenance Systems (2005), <http://eprints.ecs.soton.ac.uk/11310/>
7. Holland, D.A., Braun, U., Maclean, D., Muniswamy-Reddy, K.K., Seltzer, M.I.: Choosing a Data Model and Query Language for Provenance. In: Proceedings of the 4th International Provenance and Annotation Workshop, IPAW (2008), doi:10.1.1.152.3820
8. Inter-Organization Programme for the Sound Management of Chemicals (IOMC): No 1: OECD Principles on Good Laboratory Practice (1998), http://www.oecd.org/document/63/0,2340,en_2649_34381_2346175_1_1_1_37465,00.html
9. Kloss, G.K.: MataNui Project, <http://launchpad.net/matanui> (last accessed June 2011)
10. Kloss, G.K.: MataNui – Building a Grid Data Infrastructure that “doesn’t suck!”. In: Proceedings of the 1st New Zealand eResearch Symposium, Auckland, New Zealand (2010)
11. Merriam Webster, I. (ed.): Merriam-Webster Online Dictionary. Merriam-Webster, Incorporated (2010)
12. Moreau, L.: The Foundations for Provenance on the Web. Foundations and Trends in Web Science 2(2-3), 99–241 (2010), <http://eprints.ecs.soton.ac.uk/21691/>

13. Moreau, L., Clifford, B., Freire, J., Futrelle, J., Gil, Y., Groth, P., Kwasnikowska, N., Miles, S., Missier, P., Myers, J., Plale, B., Simmhan, Y., Stephan, E., den Bussche, J.V.: The Open Provenance Model core specification (v1.1). *Future Generation Computer Systems* 27(6), 743–756 (2010), <http://openprovenance.org/>, doi:10.1016/j.future.2010.07.005
14. Moreau, L., Clifford, B., Freire, J., Gil, Y., Groth, P., Futrelle, J., Kwasnikowska, N., Miles, S., Missier, P., Myers, J., Simmhan, Y., Stephan, E., den Bussche, J.V.: The Open Provenance Model—Core Specification (v1.1). *Future Generation Computer Systems* 27, 743–756 (2010), <http://eprints.ecs.soton.ac.uk/21449/>, doi:10.1016/j.future.2010.07.005
15. Munroe, S., Miles, S., Groth, P., Jiang, S., Tan, V., Moreau, L., Ibbotson, J., Vazquez-Salceda, J.: PRIME: A Methodology for Developing Provenance-Aware Applications. Tech. rep., Grid-Provenance Project, Southampton, UK (2006), <http://eprints.ecs.soton.ac.uk/13215/>
16. Ney, M.: Enabling a data management system to support the good laboratory practice. Master's thesis, Free University of Berlin (2011), <https://wiki.sistec.dlr.de/DataFinderOpenSource/LaboratoryNotebook>
17. Schlauch, T., Schreiber, A.: DataFinder – A Scientific Data Management Solution. In: Proceedings of Symposium for Ensuring Long-Term Preservation and Adding Value to Scientific and Technical Data 2007 (PV), Oberpfaffenhofen, Germany (2007)
18. Simmhan, Y., Groth, P., Moreau, L.: Special Section: The third provenance challenge on using the open provenance model for interoperability. *Future Generation Computer Systems* 27(6), 737–742 (2011), <http://www.sciencedirect.com/science/article/pii/S0167739X100%02402>, doi:10.1016/j.future.2010.11.020
19. Simmhan, Y.L., Plale, B., Gannon, D.: A Survey of Data Provenance Techniques. Tech. rep., Computer Science Department, Indiana University, Bloomington, IN, USA (2005), doi:10.1.1.70.6294
20. The Data Finder Team: DataFinder Project, <http://launchpad.net/datafinder> (last accessed June 2011)
21. Tylissanakis, G., Cotronis, Y.: Data Provenance and Reproducibility in Grid Based Scientific Workflows. In: Workshops at the Grid and Pervasive Computing Conference, pp. 42–49 (2009), doi:10.1109/GPC.2009.16
22. Wehmeier, S. (ed.): Oxford Advanced Learners Dictionary, 6th edn. Oxford University Press (2000)
23. Wendel, H.: Using Provenance to Trace Software Development Processes. Master's thesis, University of Bonn, Bonn, Germany (2010), <http://elib.dlr.de/64835/>
24. Zhang, S., Coddington, P., Wendelborn, A.: Connecting arbitrary data resources to the Grid. In: Proceedings of the 11th International Conference on Grid Computing (Grid 2010). ACM/IEEE, Brussels (2010)
25. Zhang, S., Kloss, G.K., Behnke, L.: Griffin Project (2011), <https://projects.arcs.org.au/trac/griffin> (last accessed March 2011)