

Sedimentary media analysis platform for groundwater modeling in urban areas

R. Gogu^{1,2}, V. Velasco³, E. Vázquez - Suñe⁴, D. Gaitanaru¹, Z. Chitu¹, I. Bica¹

¹ Technical University of Civil Engineering, Bucharest, Romania, radu.gogu@utcb.ro

² Romanian Academy Center for Artificial Intelligence Bucharest, Romania

³ Department of Geotechnical engineering and Geosciences Technical University of Catalonia, Barcelona, Spain

⁴ Institute of Environmental Analysis and Water Studies, CSIC Barcelona, Spain

Abstract In Europe numerous urban areas are located in the flood plains of the rivers. Sedimentary media (alluvial sediments, deltas, etc.) form particular frequently occurring environments within these valley fills. However, sedimentary media are normally significant aquifers due to their high permeability, storage capacity, interaction with surface water, etc. A reliable management of the hydraulic resources in urban areas can be performed only by using modeling. The models can provide accurate results if they correctly reproduce the hydrogeological processes. Tools and methodologies should allow the representation in three dimensions of the geological record heterogeneity and of its spatial distribution as well as the interaction of the groundwater with the urban infrastructure. The paper will focus on the main aspects of these instruments, which are currently developed within a national research project, that have to support 3D hydrogeological modeling. Within this project a software platform has been developed containing methodologies and tools that facilitate the integration of the 3D geological models in sedimentary media into the hydrogeological modeling of flow and contaminant transport. This is composed by a geospatial database and a set of tools allowing accurate stratigraphical analysis. An application of this platform is currently developed for the Moesian aquifer system (Bucharest city Region).

1 Introduction

In Europe numerous urban areas are located in the flood plains of the rivers. Sedimentary media form particular frequently occurring environments within these valley fills. However, sedimentary media are normally significant aquifers due to their high permeability, storage and management ability, interaction with surface water, etc. A reliable water management can be obtained by groundwater modeling. The models allow conceptualizing and quantifying the hydrogeological processes and simulate various scenarios as droughts, water resource exploitation, wa-

ter quality evolution and contamination aspects, interaction with civil works in terms of hydraulic and geomechanical ground behavior.

These models can provide accurate results if they correctly reproduce the hydrogeological processes. Nevertheless, it is well-known that sedimentary media are normally extraordinarily heterogeneous, which is a paradox as it leads to simplified models based on the homogeneity of large zones characterizing the medium. The paper presents a software platform containing methodologies and tools that facilitate the integration of the 3D geological models in sedimentary media into the hydrogeological modeling of flow and contaminant transport. This is composed by a geospatial database and a set of tools allowing accurate stratigraphical analysis. The geospatial database is used for the management of a large amount of different data types coming from different sources (geophysical, geological, hydraulic, and others). Its structure allows storing accurate and very detailed geological core description that can be straightforwardly generalized and further up-scaled.

The obtained methods and tools are used for spatial data manipulation, which support understanding the detailed geology of the sedimentary media and the integration of the geological processes that controlled their formation. From the existing data and the developed methods, the petrophysical characteristics could be extrapolated to the entire sedimentary volume considered at a local level, by using various techniques such as the deterministic or stochastic methods.

The described platform has been initially designed starting from the existing hydrogeological model of Barcelona region (Vázquez-Suñé et al. 2006). Currently an application of this platform is developed for the Moesic aquifer system of Bucharest city area. This involves: (1) 3D geological characterization - application of the methodologies and developments suggested, (2) 3D parameterization of the Moesic aquifer system (Fratesi strata, Mostistea, and Colentina), (3) Management of the hydrogeological data base (tests and hydraulic parameters, level data, hydrochemical data, etc.), (4) Hydraulic definition/parameterization of facies and other geological concepts and, (5) Interaction between underground infrastructure and groundwater.

2 Study case geological and hydrogeological conditions

In the Bucharest city region, the Moesic platform shows two main aquifer types (Fig. 1). One is a regional high depth fissured-karstic carbonate aquifer of the Superior Jurassic – Inferior Cretaceous and the other one is located in the Pliocene and Pleistocene raw deposits.

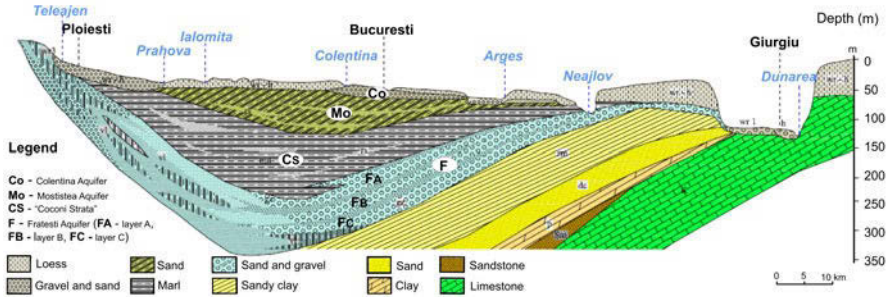


Fig. 1. Hydrogeological cross-section of the study area.

The second aquifer system called “Fratesti strata” (Liteanu 1953) is placed in the Tertiary deposits of the Upper Pleistocene and of Lower Pleistocene. This represents the main hydrogeological formation used for water supply of the South-Eastern Romania. It behaves as a confined multilayered aquifer. On the Northern side, the Fratesti strata aquifer system is made of three main layers indexed as A, B, C. These layers are regrouped in the Southern part forming a single aquifer layer. The thickness of the three layers shows a spatial variability. The mean thickness of the A aquifer layer is between 25 and 60 m. Its hydraulic conductivity takes values between 12 -24 m/day and 4-12 m/day in Northern Bucharest. The B aquifer layer is located at a higher depth and its mean thickness is between 5 and 50 m. The mean thickness of the deepest aquifer layer (C) is between 25 and 30 m. Between the three aquifer layers (A, B, and C) sandy-clayey strata with a thickness variation of 40 m to 5 m can be found (Pascu 1983). A sequence of marl and clay layers with slim sandy intercalations overlay the “Fratesti strata”. In the Bucharest area its thickness decreases from north to south from about 150m to 40m. The marl sequence is covered by a permeable raw rocks layer made of fine and medium sands with gravel intercalations. This is called “Mostistea sands” aquifer and is located at depths between 25 m and 70 m. It is a confined aquifer and its hydraulic head takes values similar to another upper aquifer layer. The upper aquifer stratum of these quaternary formations called “Colentina gravels” is made of gravels and sands. This unconfined aquifer can be found mainly in the Bucharest city region at depths between 15 m and 20 m. However the water quality is quite low, the groundwater level can be found at 5 to 10 m depth. The aquifer thickness is between 3 to 5 m showings a variation of the particle size distribution. The hydraulic conductivity varies between 10 m/day and 70 m/day, sometimes being higher than 100 m/day. A clayey-marl layer is located between the “Mostistea sands” and the “Colentina gravels”.

3 The analysis software platform

The 3D analysis platform for groundwater modeling is composed by a hydro-geological geospatial database and several sets of instruments facilitating the development of the geological model and allowing hydrogeological analysis. One set of instruments using the database spatial information is dedicated to stratigraphical analysis. It has been developed on the ArcMap software, part of the ArcGIS (ESRI) package. This considerably extends the functionalities of ArcMap. Another set of instruments allows borehole local estimation of hydraulic conductivity for lithological strata and for stratigraphical units.

The Hydrogeological Geospatial Database

The design of geospatial database has an Object-Oriented approach and is easily extensible. A large spectrum of data was identified, as many related domains are concerned: geography, geology, hydrology, hydrogeology, meteorology, water engineering, land management and others. The architecture of the hydrogeological database (Figure 2) follows international standards for geospatial data encoding. This is reflected in its object-oriented approach supported by the Open Geospatial Consortium (OGC) and the International Organization for Standardization (ISO).

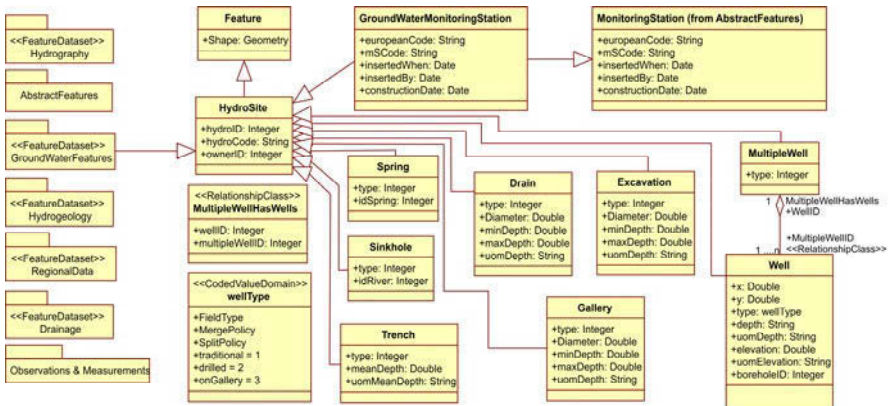


Fig. 2. Overview of the hydrogeological database scheme.

The database structure allows storing an accurate and very detailed geological core description that can be straightforwardly generalized and further upscaled. It serves to improve the quantification of the hydrogeological parameters. Relationships between the petrological, paleontological, chronological data could be established. Petrological characteristics are described for clastic and carbonated sediments in terms of textural (sediment size, sorting, roundness, matrix support),

lithological, colour, and others. The sedimentary structures, the geological layers boundaries, the geological units chronology or facies assignment, the paleontological content, and some complementary information are represented.

Lithological and stratigraphical analysis tool

The design of the lithological and stratigraphical analysis instruments has been set up to facilitate firstly the hydrogeological data interpretation. This subset of tools is made of several subcomponents. One of them allows the visualization of the borehole core lithological and stratigraphical information. Another one allows generating the geological profiles by query and visualization of the lithological and stratigraphical information. By using the third set of instruments, the user is able to identify stratigraphic units, analyze their characteristics, and export them in a 3D environment.

Borehole diagram instruments

This tool has been developed in order to facilitate the visualization and the analysis of the borehole detailed geological core description. To ease the analysis, the data visualization was designed following the classical geologist working bearings. By selecting a point representing a borehole on the map, the user has the possibility of querying the attached lithological and stratigraphical information. For each lithological stratum can be visualized the petrological characteristics in terms of texture (sediment size, sorting, roundness, matrix support), lithology, and colour.

Stratigraphic cross-sections correlation tool

The basic idea of this instrument is to facilitate the process of stratigraphic well correlation to the geologist. This kind of perception pulls on the understanding of geological processes, examination of exposures, and theoretical knowledge gathered by the modeler. This set of tools starts from the creation of a geological profile by querying a buffer zone line on a map, the user is drawing on screen. The profile is generated automatically by displaying the boreholes lithological columns together with the defined stratigraphical units/subunits. Complementary information is shown like the surface terrain profile extracted from the DEM, the distance between the boreholes, and the depth of each stratum. On this basis, an interactive analysis environment is created for a subsequent set of instruments. The user is

able to analyze and to vectorize on screen the identified existing stratigraphical elements by using lines, polygons, or points. For each feature a set of attributes like the type of the contact surface, the position between the hydrogeological units or subunits as well as different hydraulic parameters or other observations can be stored. Possible existing faults and fractures can be identified and drawn on screen within the same environment. The obtained information, represented by the user identified geological features, can be then converted within a 3D environment. The export procedure provides spatial features as points, lines, or polygons with their attached attributes. The resulted 3D features could be then used within the same GIS environment or by external software packages for further stochastic analysis or to build-up the geological 3D model.

Tool for the hydraulic conductivity initial estimation

Several steps have been made in quantifying hydraulic conductivity hydrogeological strata in boreholes, on the basis of the grain size distribution. For each lithological stratum or for the user defined hydrogeologic units, the hydraulic conductivity can be computed by using empiric formulas on the basis of the existing lithological description. This procedure could provide for the hydrogeologic models, hydraulic conductivity values closer to the reality.

4 Results and Discussions

Bucharest city area represents the first target for the software platform application on an alluvial environment. This is developed on the city region for the Moesian aquifer system. After analyzing large sets of data, the geological model is currently developed. Using the presented tools, several geological cross-sections are compiled. Figure 3 shows a cross-section located in the north-eastern part of the city.

The final target for the performed work focuses especially the characterization of groundwater, as well as the dynamics of water systems and their standard distribution in space. In this sense, the presented set of instruments represents a working environment for integrating the 3D sedimentary media spatial distribution standards of the different hydraulic parameters, in the regular hydrogeology modeling methodologies. The final goal is to explain the relationship between the computed hydraulic conductivity values and the effective-type values, which are the ones that in reality define the dynamics of the aquifers. This improves the conceptual model to build-up a hydrogeological model. The developed database structure allows storing data for most of the hydrogeological studies.

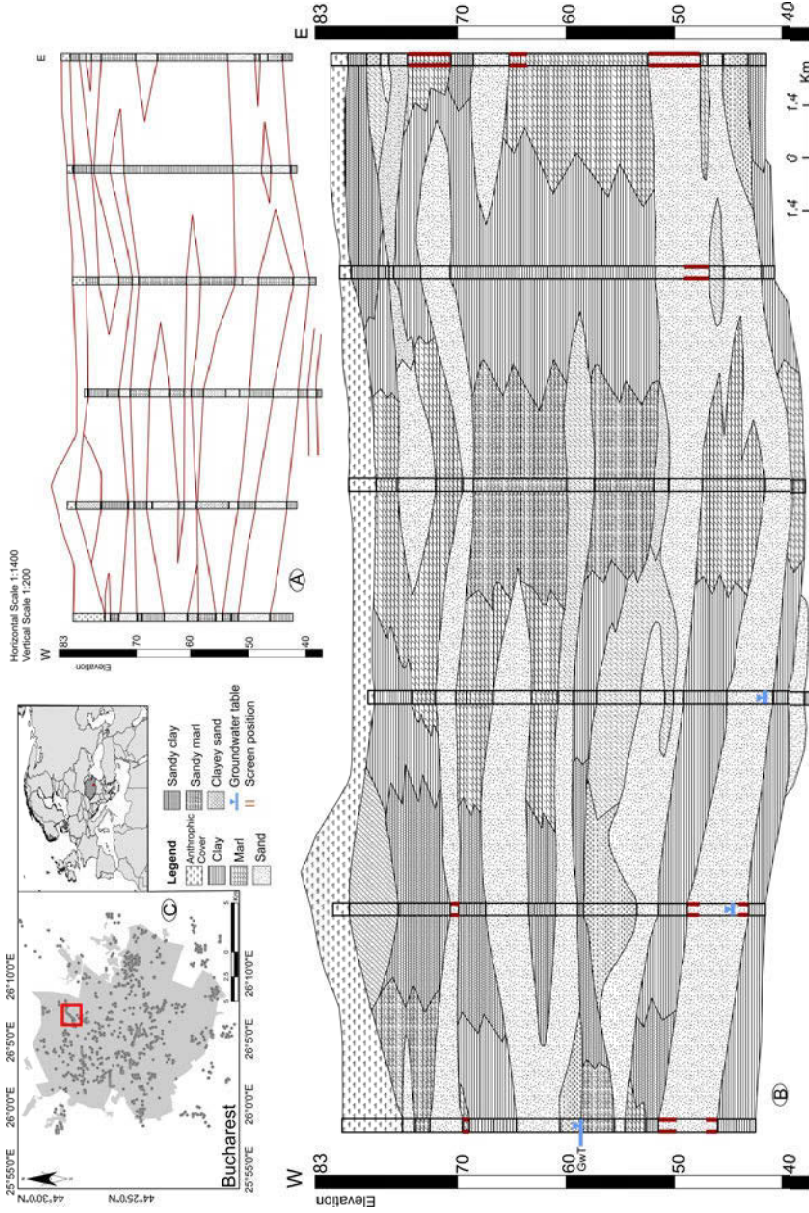


Fig. 3. Geological profile generated by using the stratigraphic cross-sections correlation tool (A - stratigraphic correlation tool output, B - geological cross-section interpretation, C - location of the geological profile on the map of Bucharest city).

The integration of detailed core stratigraphical and lithological description with hydrogeological local and regional parameters, hydrogeological tests as pumping and tracer tests, surface hydrology features, information related to different observations and measurements, give the user a consistent image on the studied aquifer behavior. As the described software allows performing detailed geological analysis, it also represents an excellent tool for managing and obtaining geotechnical information. This will help in studying the current geotechnical conditions and in recommending infrastructure development methods taking into account the environmental requirements. To date the presented software platform offers tools and methodologies that allow the representation in three dimensions of the geological record heterogeneity and its spatial distribution. The current research work focuses on the interaction of the groundwater with the urban infrastructure in terms of water supply and sewer systems, drainage systems of basements, subway network, and others.

5 Conclusions

The design of the described instruments is following the geologist classical way of working when they characterize geologically a study area. The instruments have been thought to be applied for hydrogeological analysis but they could be applied to other kinds of geological, geotechnical, or environmental studies. The presented work support the development of 3D geological characterization methods in sedimentary media, to carry out the development of hydraulic parametrization techniques for hydrogeological modeling. This represents the base for developing a reliable groundwater model facing urban aspects. The analysis of the geotechnical aspects in relationship to different ground and underground infrastructure elements as well as their interaction with groundwater will represent the next step of using the 3D geological software platform.

Acknowledgments This work is supported by the National Authority for Scientific Research of Romania, in the frame of the project “Sedimentary media modeling platform for groundwater management in urban areas (SIMPA)”, no. 660.

References

- Liteanu E (1952) The geology of the Bucharest city region. Geological Committee for Research and Exploration of the Underground Treasures. Bucharest
- Pascu M (1983) *Apele Subterane din Romania*. Ed. Tehnica Bucuresti, Bucuresti
- Vázquez-Suñé E, Abarca E, Carrera J, Capino B, Pool M, Gámez D, Simó T, Batlle F, Niñerola J.M, Ibáñez X. (2006) Groundwater modelling as a tool for the European Water Framework Directive (WFD) application: The Llobregat case, *Physics and Chemistry of the Earth* 31, 1015-1029