

Surface Views of the Ferret Brain

Gyri and Sulci of the Ferret Forebrain in Top and Side Views (Fig. 1)

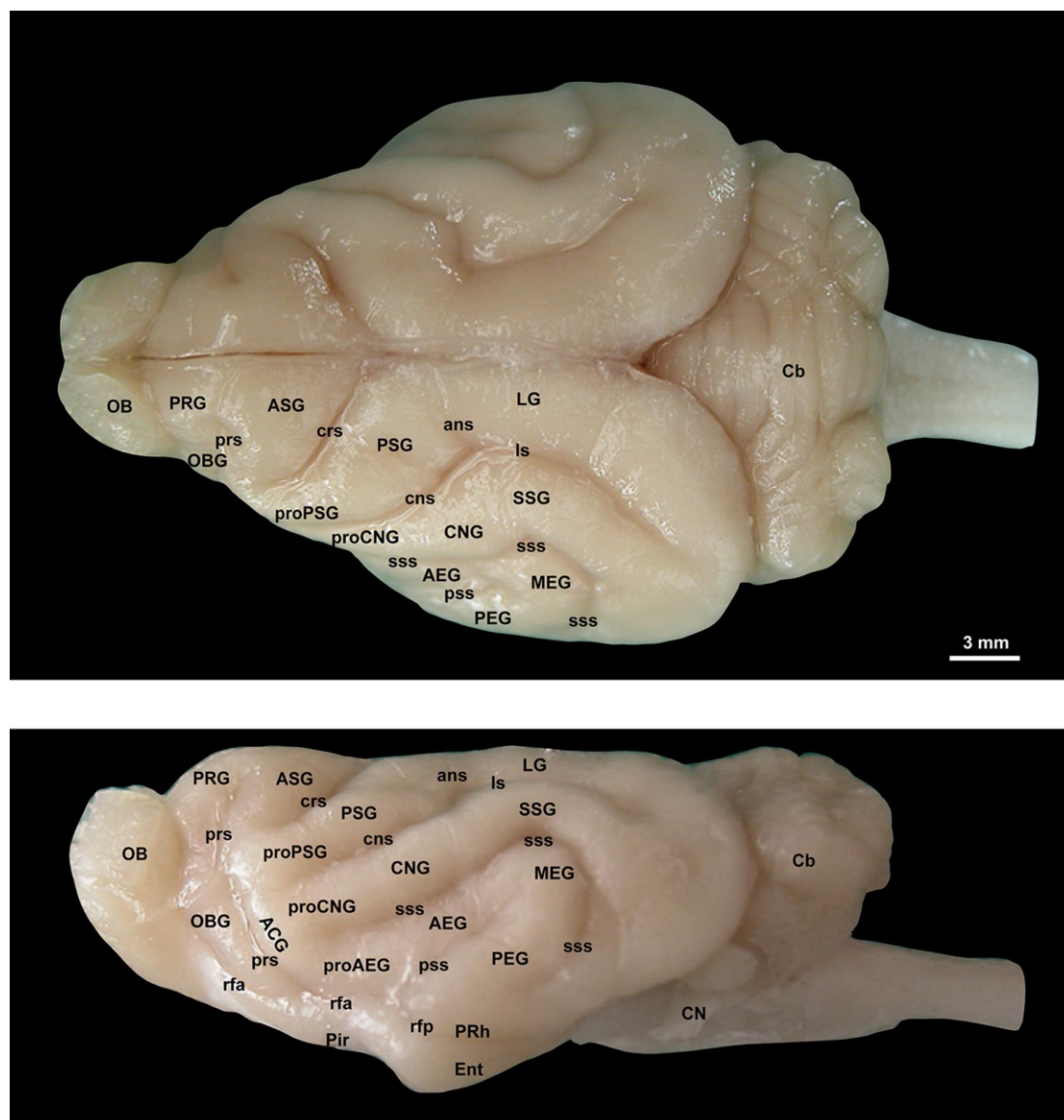


Fig. 1 Gyri and sulci of the ferret forebrain in top and side views. *Abbreviations:* ACG anterior composite gyrus, AEG anterior ectosylvian gyrus, ans ansate sulcus, ASG anterior sigmoid gyrus, Cb cerebellum, CN cochlear nucleus, CNG coronal gyrus, cns coronal sulcus, crs cruciate sulcus, Ent entorhinal cortex, LG lateral gyrus, ls lateral sulcus, MEG medial ectosylvian gyrus, OB olfactory bulb, OBG orbital gyrus,

PEG posterior ectosylvian gyrus, Pir piriform cortex, PRG preoreal gyrus, PRh perirhinal cortex, proAEG pro-anterior ectosylvian gyrus, proCNG pro-coronal gyrus, proPSG pro-posterior sigmoid gyrus, prs presylvian sulcus, PSG posterior sigmoid gyrus, pss pseudosylvian sulcus, rfa rhinal fissure; anterior part, rfp rhinal fissure, posterior part, SSG suprasylvian gyrus, sss suprasylvian sulcus

Delineations of Functional and Structural Areas of the Ferret Cortex in Top and Side Views (Fig. 2)

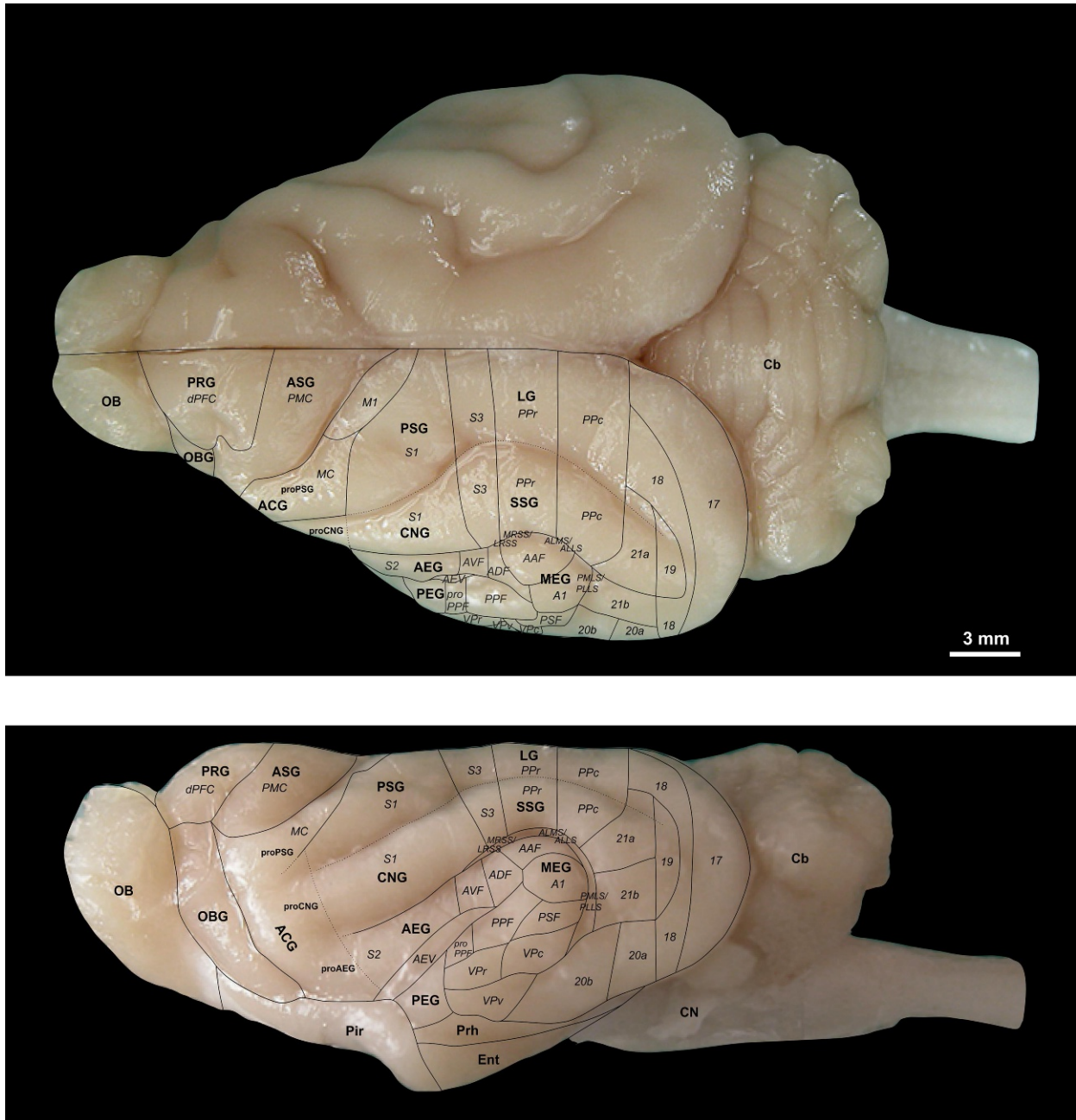


Fig. 2 Delineations of functional and structural areas of the ferret cortex in top and side views. Outlines are horizontal and lateral projections of the atlas brain delineations. Function-related terms are in *italic* letters; gyri and anatomical cortical structures are in normal and **bold** letters. *Abbreviations:* 17 Area 17, primary visual cortex, 18 Area 18 of visual cortex, 19 Area 19 of visual cortex, 20a Area 20a of visual cortex, 20b Area 20b of visual cortex, 21a Area 21a of visual cortex, 21b Area 21b of visual cortex, A1 primary auditory cortex, AAF anterior auditory field, ACG anterior composite gyrus, ADF anterior dorsal field, AEG anterior ectosylvian gyrus, AEV anterior ectosylvian visual area, ALLS anterolateral lateral suprasylvian cortex, ALMS anterior medial lateral suprasylvian cortex, ASG anterior sigmoid gyrus, AVF anterior ventral field of auditory cortex, Cb cerebellum, CN cochlear nucleus, CNG coronal gyrus, dPFC dorsal prefrontal cortex, Ent entorhinal cortex, LG lateral

gyrus, LRSS lateral bank of the rostral suprasylvian sulcus, M1 primary motor cortex, MC motor cortex, MEG medial ectosylvian gyrus, MRSS medial bank of rostral suprasylvian sulcus, OB olfactory bulb, OBG orbital gyrus, PEG posterior ectosylvian gyrus, Pir piriform cortex, PLLS posterolateral lateral suprasylvian area, PMC premotor cortex, PMLS posteromedial lateral suprasylvian area, PPc posterior parietal cortex, caudal part, PPF posterior pseudosylvian field, PPr posterior parietal cortex, rostral part, PRG proreale gyrus, PRh perirhinal cortex, proAEG pro-anterior ectosylvian gyrus, proCNG pro-coronal gyrus, proPSG pro-posterior sigmoid gyrus, PSF posterior suprasylvian field, PSG posterior sigmoid gyrus, S1 primary somatosensory cortex, S2 secondary somatosensory cortex, S3 tertiary somatosensory cortex, SSG suprasylvian gyrus, VPc caudal ventroposterior field, VPr rostral ventroposterior field, VPv ventral ventroposterior field