

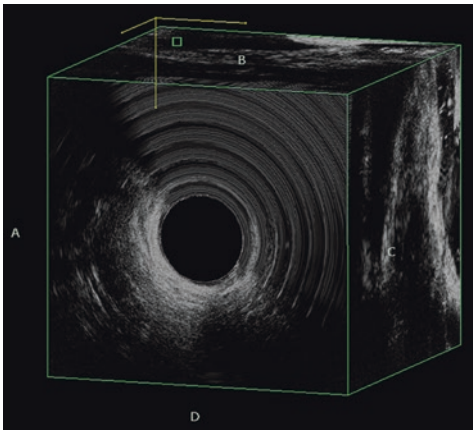
Pelvic Floor Ultrasonography: Post-Test Questions

19

S. Abbas Shobeiri

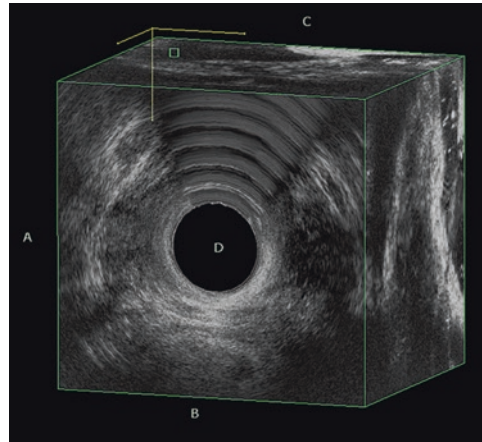
For the following questions, there is only one right answer to each question.

1. Looking at the below 3D volume please circle which one is anterior?



- [A]
- [B]
- [C]
- [D]

2. Looking at the below 3D volume please circle which one is cephalad?

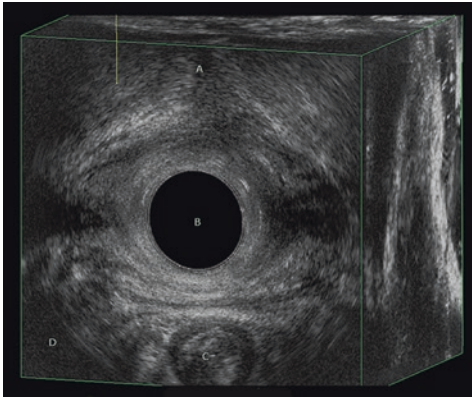


- [A]
- [B]
- [C]
- [D]

S. Abbas Shobeiri (✉)
Department of Obstetrics and Gynecology,
Gynecologic Subspecialties, INOVA Women's
Hospital, Virginia Commonwealth University,
3300 Gallows Road, Second Floor South Tower,
Falls Church, VA 22042-3307, USA

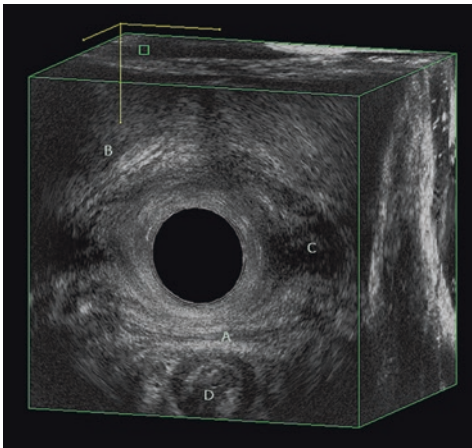
Department of Bioengineering, George Mason
University, Fairfax, VA 22030, USA
e-mail: Abbas.shobeiri@inova.org

3. Looking at the below 3D volume please circle which one is the vagina?



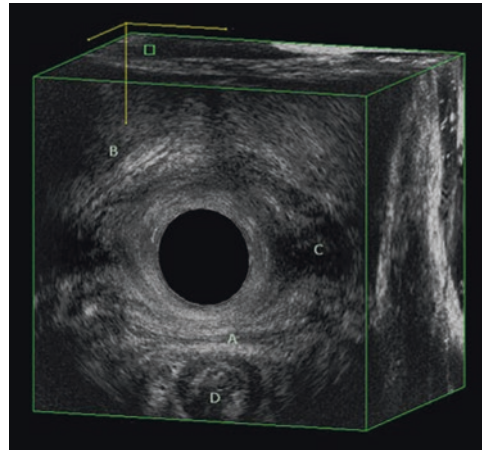
- [A]
- [B]
- [C]
- [D]

4. Looking at the below 3D volume please circle which one is the superficial transverse perineal muscle?



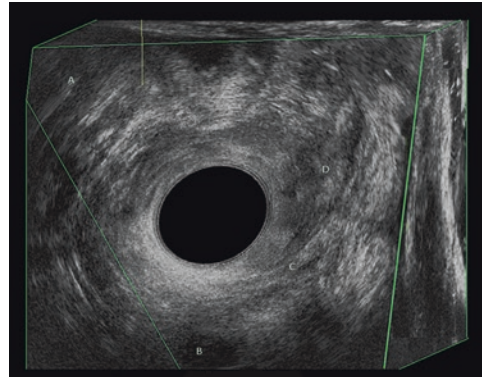
- [A]
- [B]
- [C]
- [D]

5. Which probe was used to obtain these images?



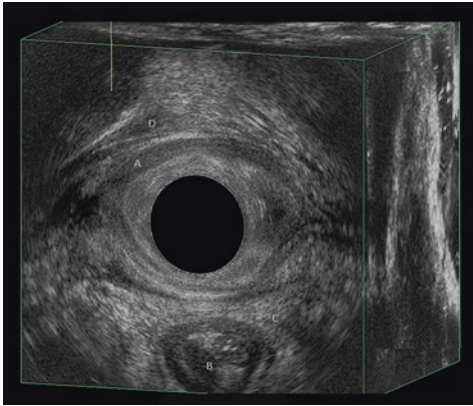
- [A] BK 2052 360° probe
- [B] BK 8848 Convex probe
- [C] BK 8848 Linear probe
- [D] BK 8802 Transperineal probe

6. Looking at the below 3D volume please circle which one is the puboperinealis muscle?



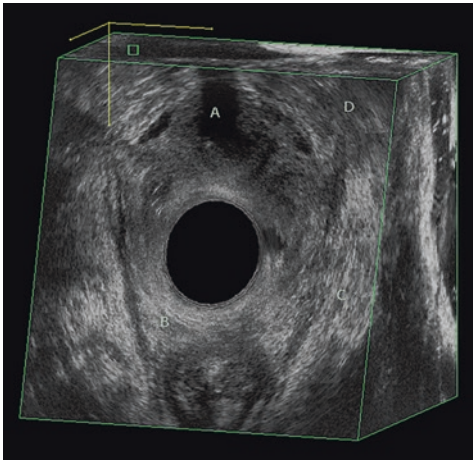
- [A]
- [B]
- [C]
- [D]

7. Looking at the below 3D volume please circle which one is the puboanalis muscle?



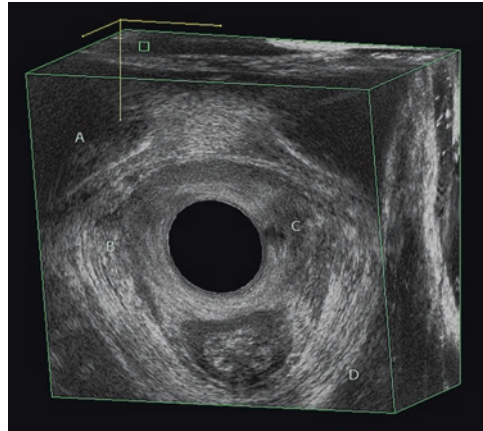
- [A]
- [B]
- [C]
- [D]

8. Looking at the below 3D volume please circle which one is the puborectalis muscle?



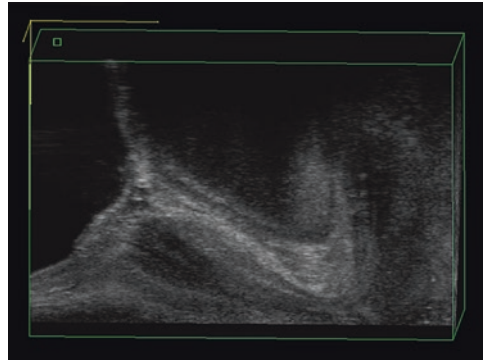
- [A]
- [B]
- [C]
- [D]

9. Looking at the below 3D volume please circle which one is the iliococcygeus muscle?



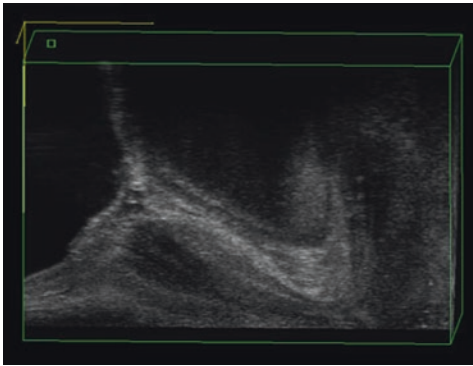
- [A]
- [B]
- [C]
- [D]

10. The view demonstrated here is



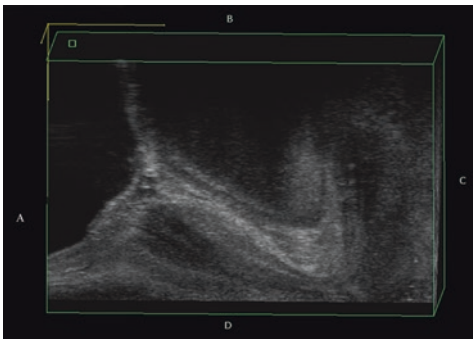
- [A] Sagittal
- [B] Coronal
- [C] Axial
- [D] Cephalad

11. Which probe is used to acquire this image?



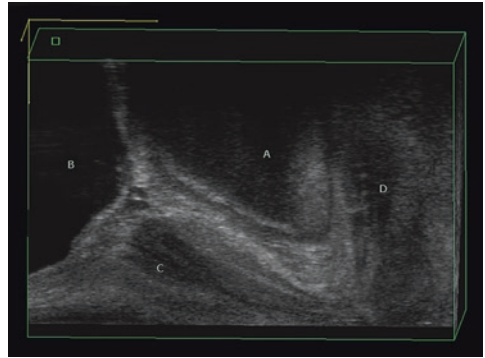
- [A] BK 2052 360° probe
- [B] BK 8848 Convex probe
- [C] BK 8848 Linear probe
- [D] BK 8802 Transperineal probe

12. Looking at the below 3D volume where is anterior?



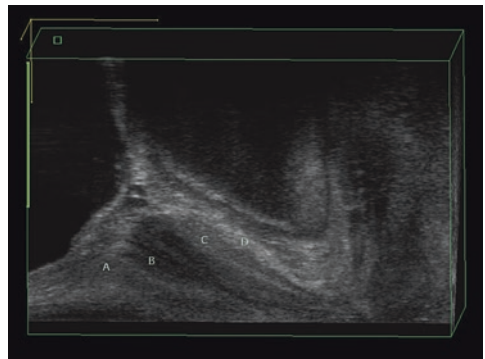
- [A]
- [B]
- [C]
- [D]

13. Looking at the below 3D volume please indicate where the pubic arch is



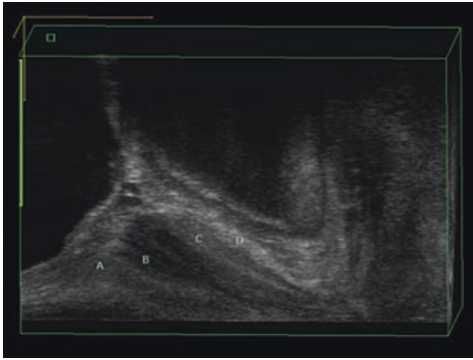
- [A]
- [B]
- [C]
- [D]

14. Looking at the below 3D volume please circle which layer is trigone?



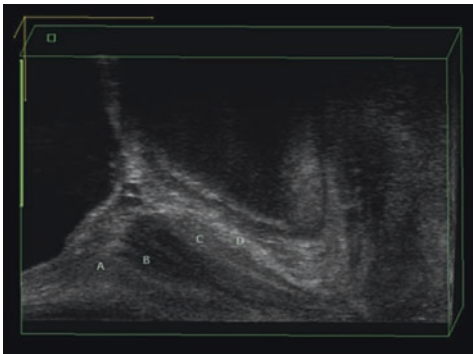
- [A]
- [B]
- [C]
- [D]

15. Looking at the below 3D volume please circle which layer is the urethral lumen?



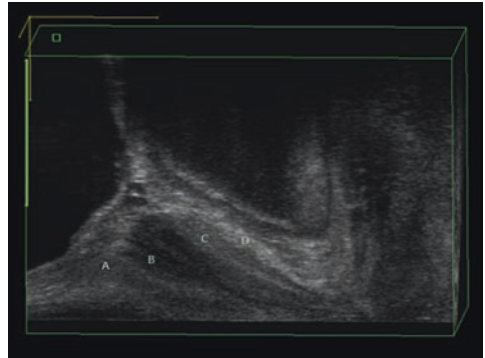
- [A]
- [B]
- [C]
- [D]

16. Looking at the below 3D volume please circle which layer is longitudinal/circular smooth muscle layer?



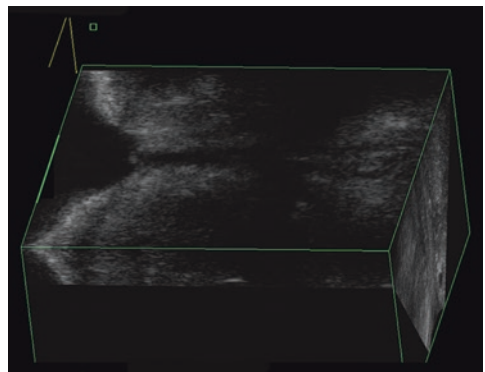
- [A]
- [B]
- [C]
- [D]

17. Looking at the below 3D volume please circle which layer is the striated muscle layer (rhabdomyosphincter)?



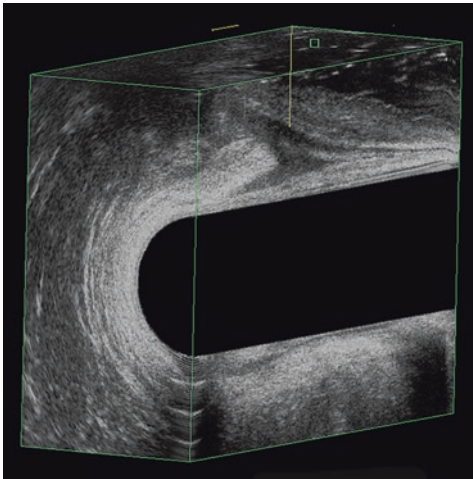
- [A]
- [B]
- [C]
- [D]

18. The view demonstrated here is



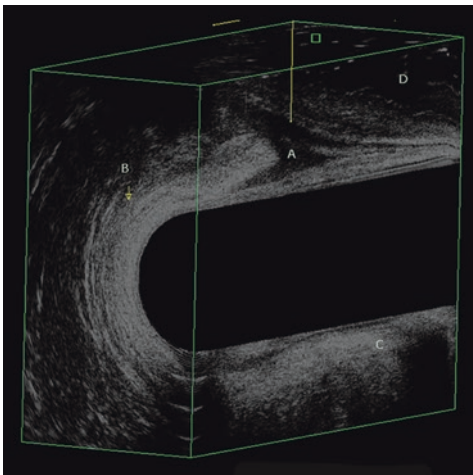
- [A] Sagittal view of the anorectum
- [B] Coronal view of the urethra and the bladder
- [C] Axial view of the anus
- [D] Cephalad view of the levator ani

19. Which probe is used to obtain this image?



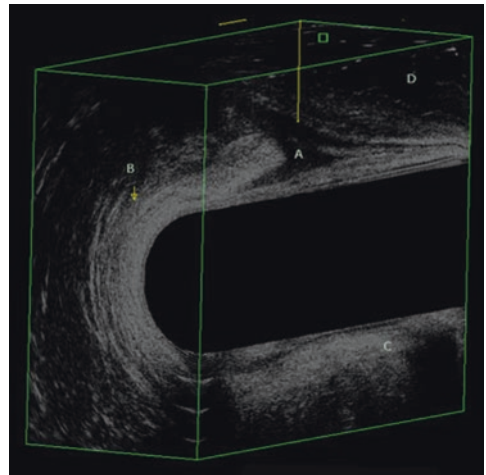
- [A] BK 2052 360° probe
- [B] BK 8848 Convex probe
- [C] BK 8848 Linear probe
- [D] BK 8802 Transperineal probe

20. Looking at the below 3D volume please circle which one is the external anal sphincter?



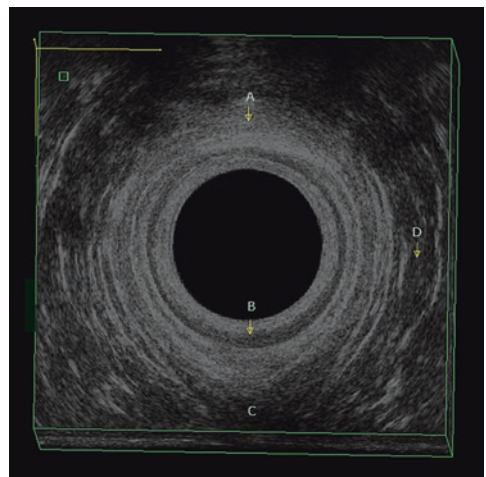
- [A]
- [B]
- [C]
- [D]

21. Looking at the below 3D volume please circle which one is the levator plate?



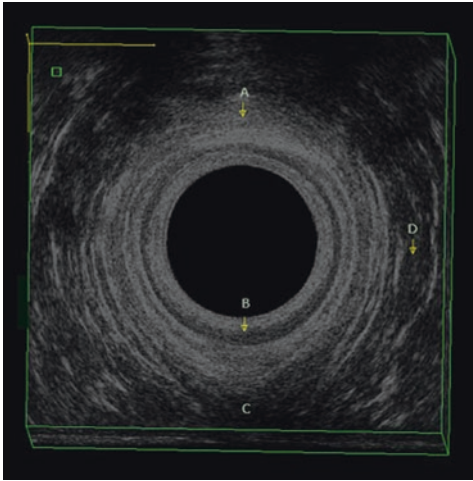
- [A]
- [B]
- [C]
- [D]

22. Looking at the below 3D volume please circle where is the internal anal sphincter?



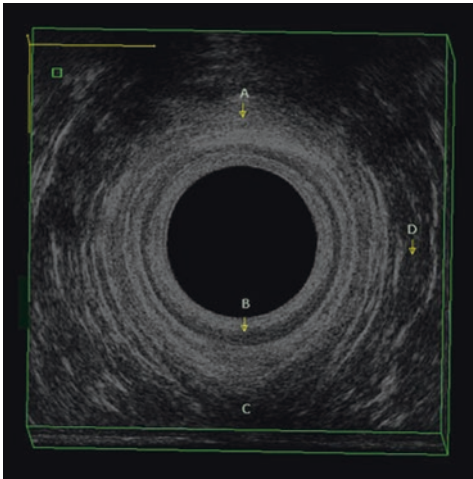
- [A]
- [B]
- [C]
- [D]

23. Looking at the below 3D volume please circle where is the external anal sphincter?



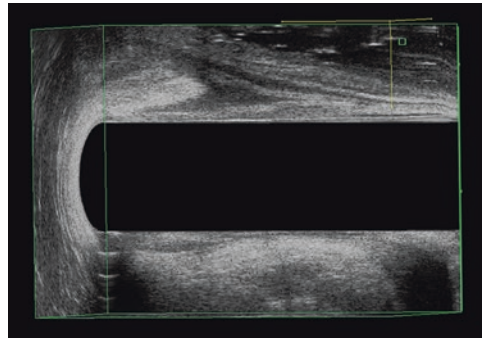
- [A]
- [B]
- [C]
- [D]

24. Looking at the below 3D volume please circle where is posterior?



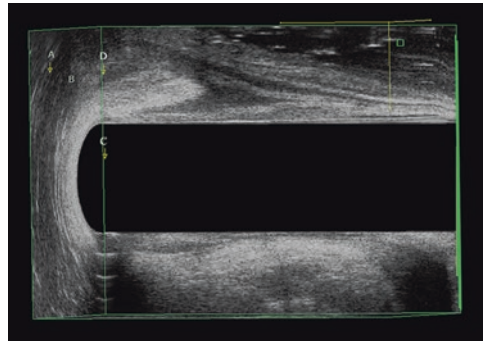
- [A]
- [B]
- [C]
- [D]

25. The view demonstrated here is



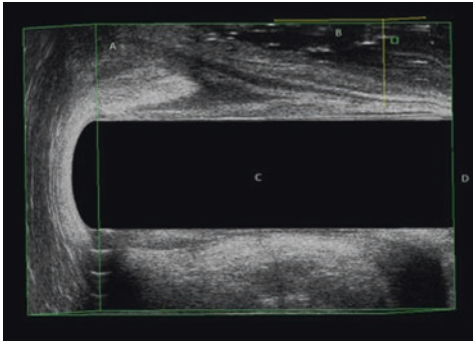
- [A] Sagittal view of the anorectum
- [B] Coronal view of the urethra and the bladder
- [C] Axial view of the anus
- [D] Cephalad view of the levator ani

26. Looking at the below 3D volume please circle where is the perineal body?



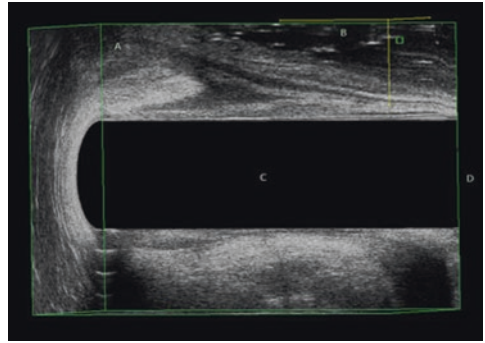
- [A]
- [B]
- [C]
- [D]

27. Looking at the below 3D volume please circle where is the anorectum?



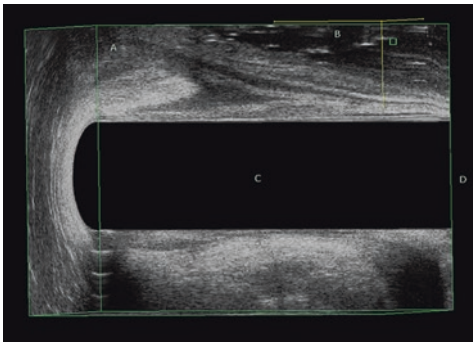
- [A]
- [B]
- [C]
- [D]

29. Looking at the below 3D volume please circle where is cephalad?



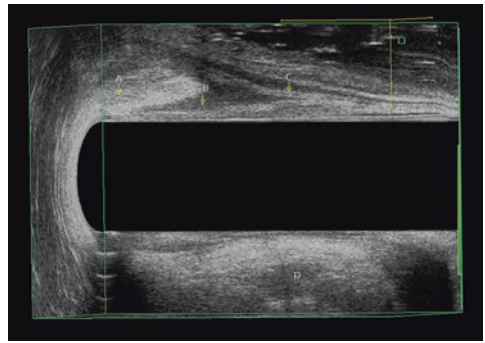
- [A]
- [B]
- [C]
- [D]

28. Looking at the below 3D volume please circle where is the vagina?



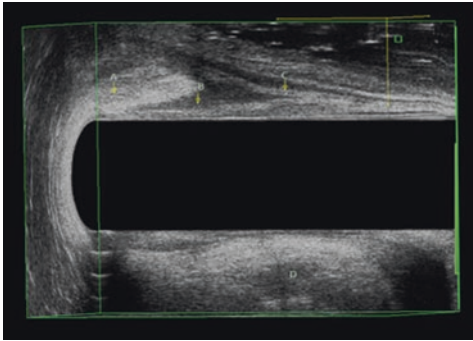
- [A]
- [B]
- [C]
- [D]

30. Looking at the below 3D volume please circle where is the internal anal sphincter?



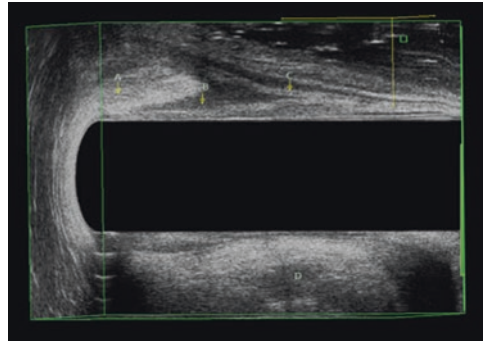
- [A]
- [B]
- [C]
- [D]

31. Looking at the below 3D volume please circle where is the external anal sphincter?



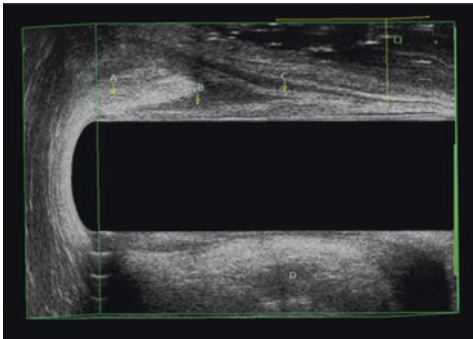
- [A]
- [B]
- [C]
- [D]

33. Looking at the below 3D volume please circle where is the rectovaginal fascia?



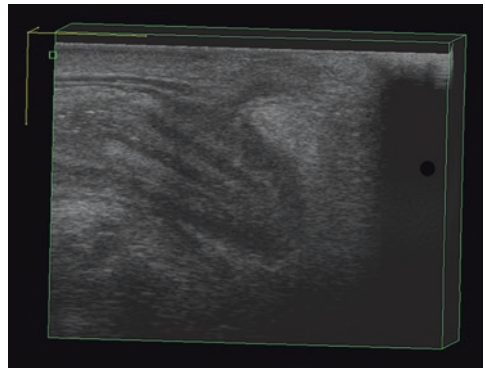
- [A]
- [B]
- [C]
- [D]

32. Looking at the below 3D volume please circle where is the levator plate?



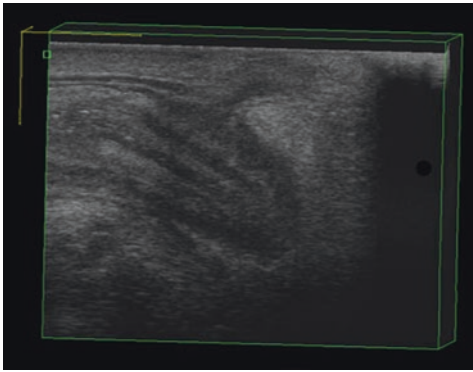
- [A]
- [B]
- [C]
- [D]

34. Which probe is used to acquire this image?



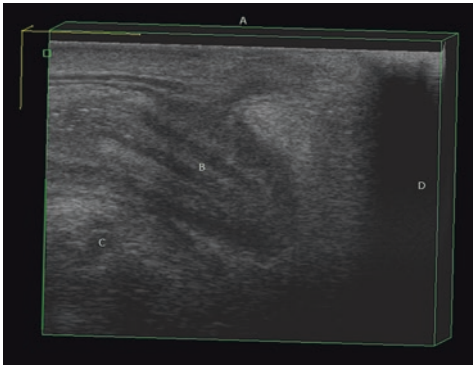
- [A] 2052 360° probe
- [B] 8848 Convex probe
- [C] 8848 Linear probe
- [D] 8802 Transperineal probe

35. The view demonstrated here is



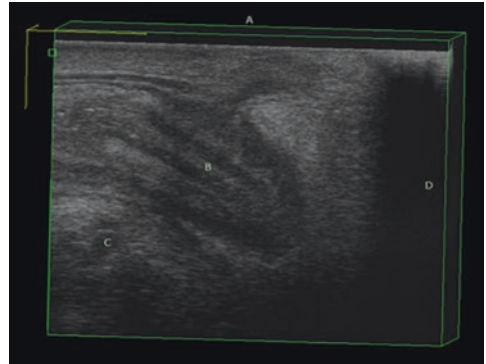
- [A] Sagittal view of the anorectum
- [B] Coronal view of the urethra and the bladder
- [C] Axial view of the anus
- [D] Cephalad view of the levator ani

36. Looking at the below 3D volume please identify where the vagina would be?



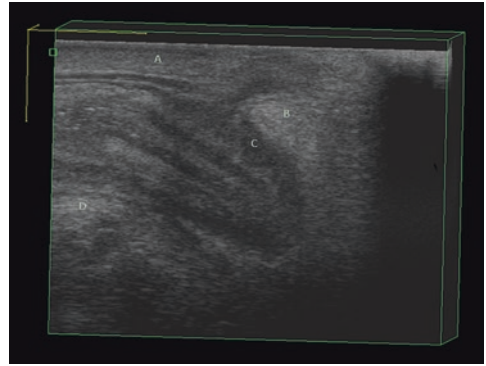
- [A]
- [B]
- [C]
- [D]

37. Looking at the below 3D volume please identify the anorectum



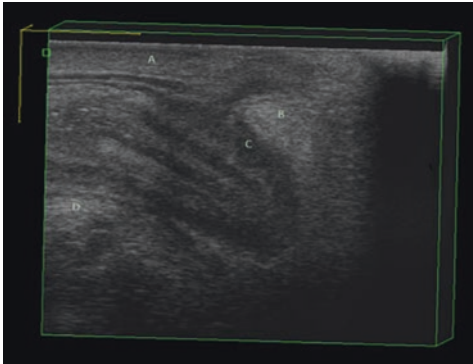
- [A]
- [B]
- [C]
- [D]

38. Looking at the below 3D volume please identify the external anal sphincter muscle



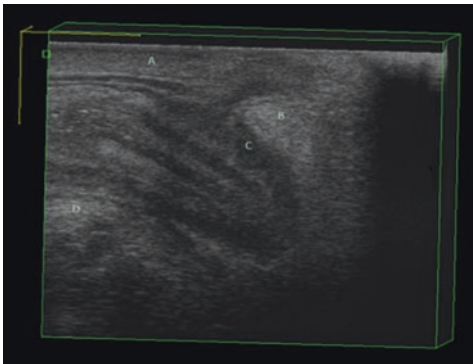
- [A]
- [B]
- [C]
- [D]

39. Looking at the below 3D volume please identify the levator plate



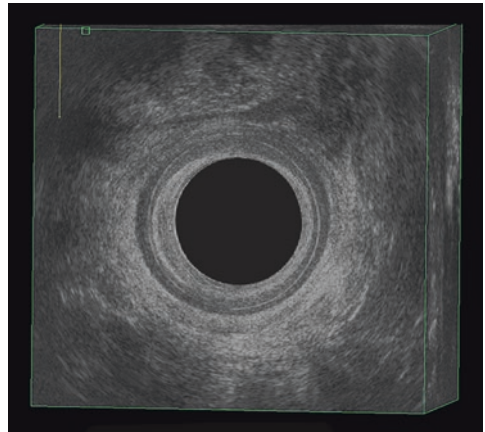
- [A]
- [B]
- [C]
- [D]

40. Looking at the below 3D volume please identify the internal anal sphincter muscle



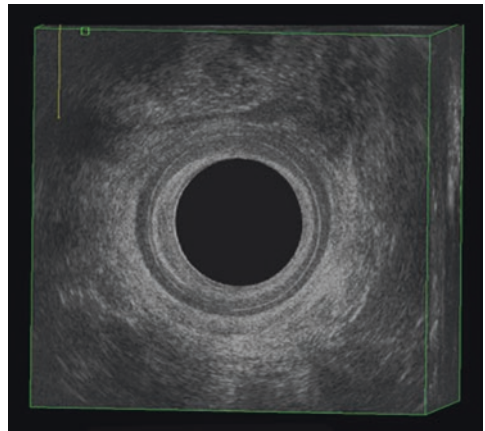
- [A]
- [B]
- [C]
- [D]

41. Which probe is used to acquire this image?



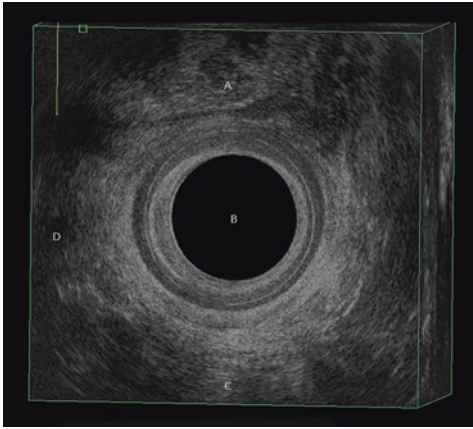
- [A] 2052 360° probe
- [B] 8848 Convex probe
- [C] 8848 Linear probe
- [D] 8802 Transperineal probe

42. The view demonstrated here is



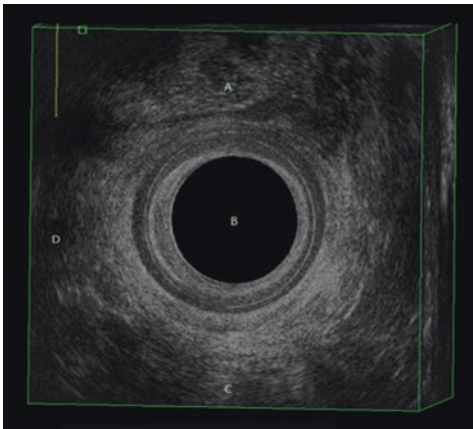
- [A] Sagittal view of the anorectum
- [B] Coronal view of the urethra and the bladder
- [C] Axial view of the anus
- [D] Cephalad view of the levator ani

43. Looking at the below 3D volume please identify where the vagina would be?



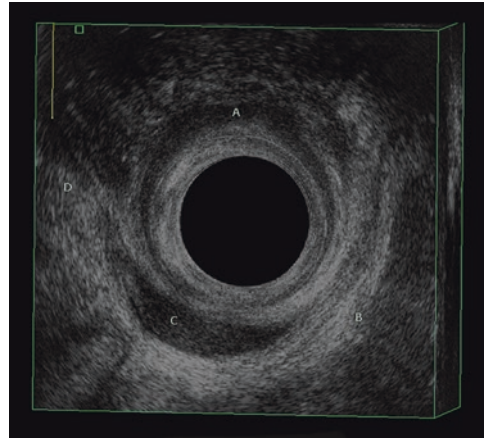
- [A]
- [B]
- [C]
- [D]

44. Looking at the below 3D volume please identify the anorectum



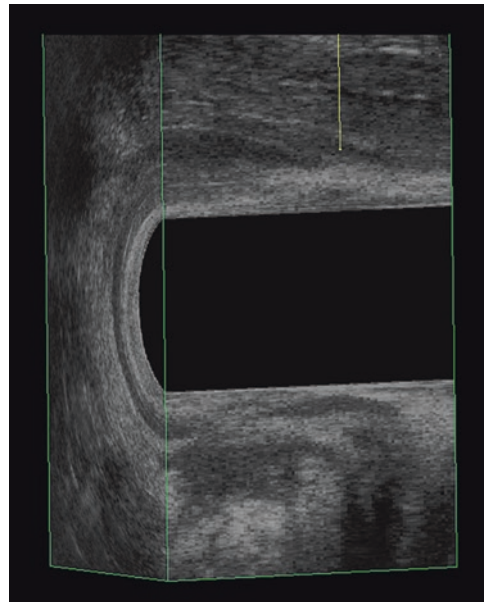
- [A]
- [B]
- [C]
- [D]

45. Looking at the below 3D volume please identify the “defect,” or a structure that you would not expect to see here



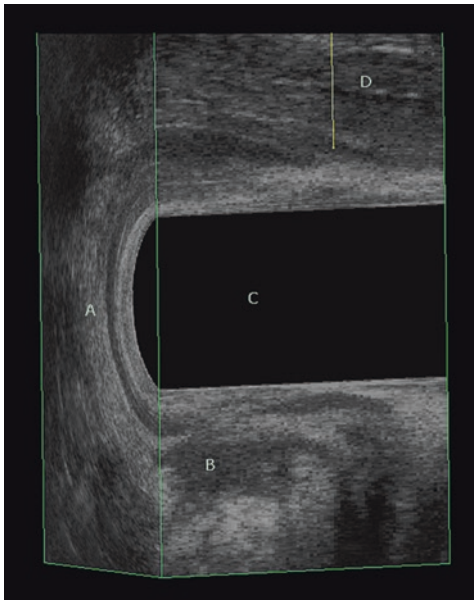
- [A]
- [B]
- [C]
- [D]

46. The view demonstrated here is



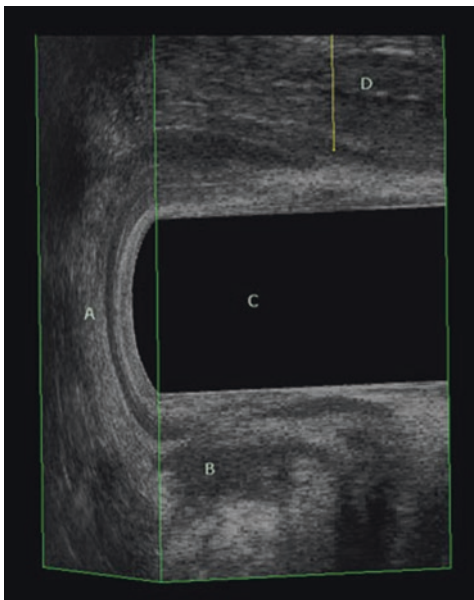
- [A] Sagittal view of the anorectum
- [B] Coronal view of the urethra and the bladder
- [C] Axial view of the anus
- [D] Cephalad view of the levator ani

47. Looking at the below 3D volume please identify the anorectum



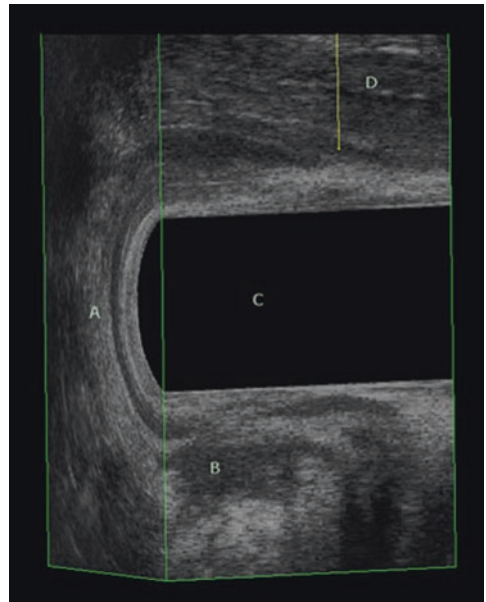
- [A]
- [B]
- [C]
- [D]

48. Looking at the below 3D volume please identify the external anal sphincter



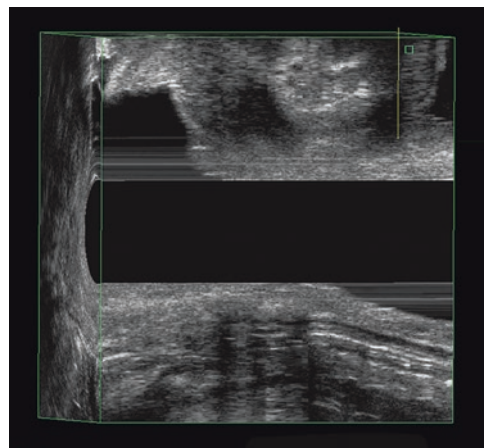
- [A]
- [B]
- [C]
- [D]

49. Looking at the below 3D volume please identify the “defect” or a structure that you do not expect to see here



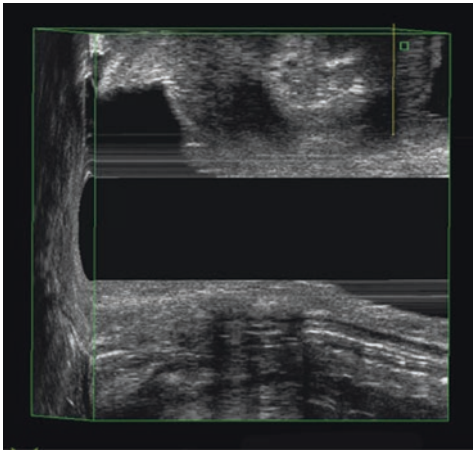
- [A]
- [B]
- [C]
- [D]

50. Which probe is used to acquire this image?



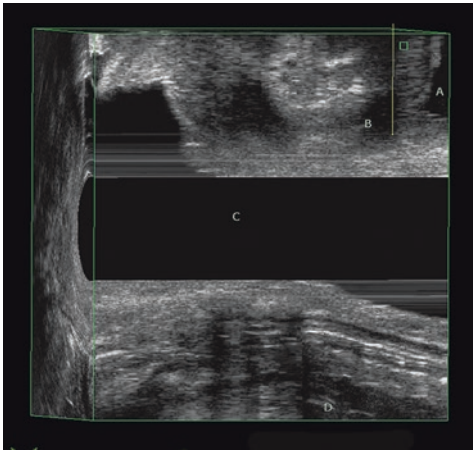
- [A] 2052 360° probe
- [B] 8848 Convex probe
- [C] 8848 Linear probe
- [D] 8802 Transperineal probe

51. The view demonstrated here is



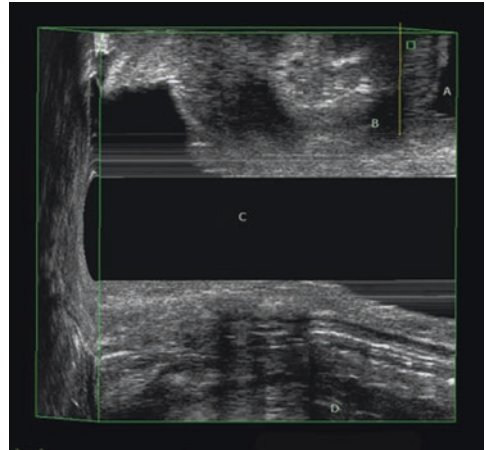
- [A] Sagittal view of the anorectum
- [B] Coronal view of the urethra and the bladder
- [C] Axial view of the anus
- [D] Cephalad view of the levator ani

52. Looking at the below 3D volume please identify the vagina



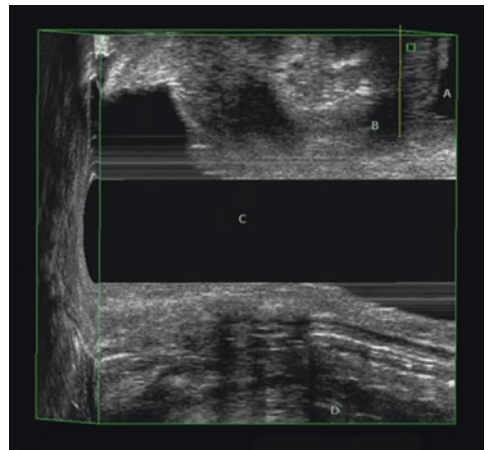
- [A]
- [B]
- [C]
- [D]

53. Looking at the below 3D volume please identify the anorectum



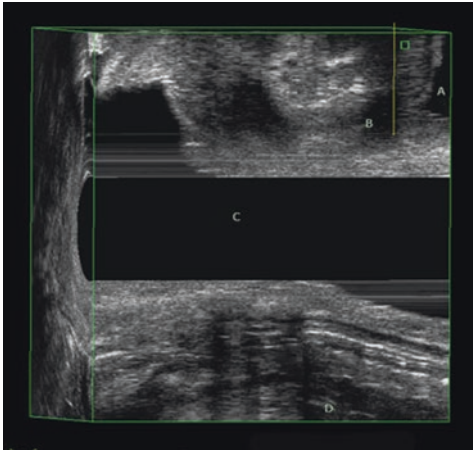
- [A]
- [B]
- [C]
- [D]

54. Looking at the below 3D volume please identify the urethra



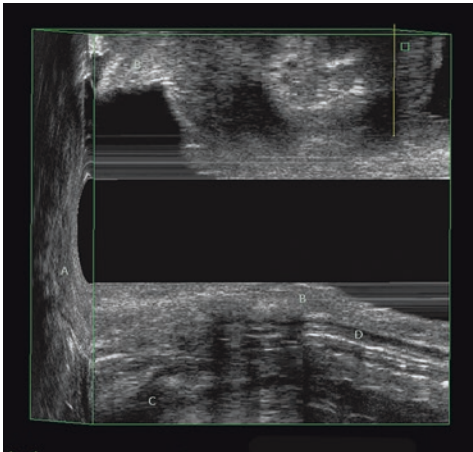
- [A]
- [B]
- [C]
- [D]

55. Looking at the below 3D volume please identify the bladder



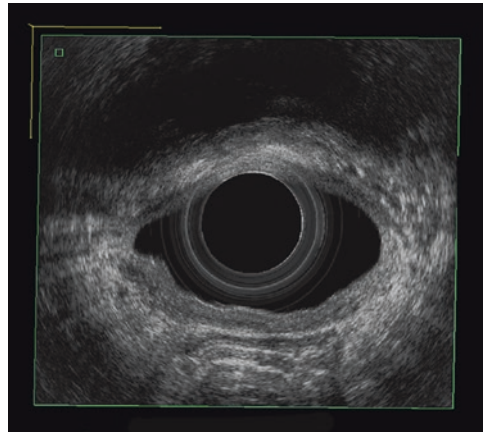
- [A]
- [B]
- [C]
- [D]

56. Looking at the below 3D volume please identify the posteriorly implanted pig tissue



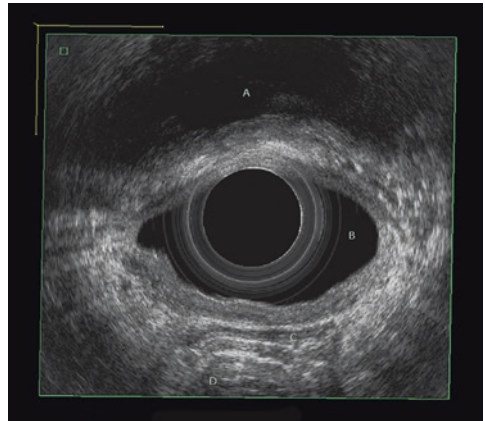
- [A]
- [B]
- [C]
- [D]

57. The view demonstrated here is



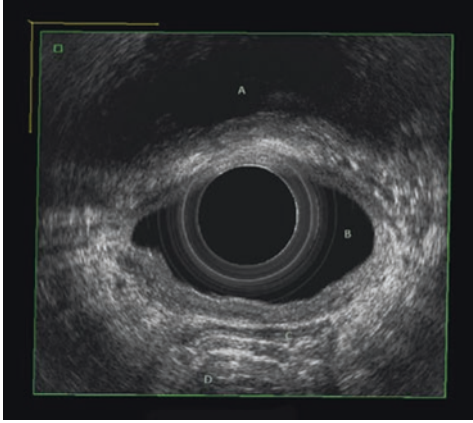
- [A] Sagittal view of the anorectum
- [B] Coronal view of the urethra and the bladder
- [C] Axial view of the vagina
- [D] Cephalad view of the levator ani

58. Looking at the below 3D volume please identify the vagina



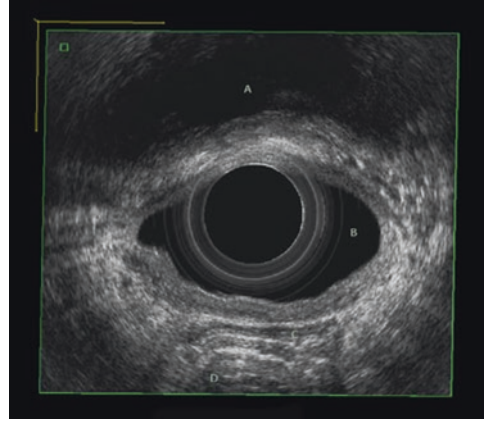
- [A]
- [B]
- [C]
- [D]

59. Looking at the below 3D volume please identify the bladder



- [A]
- [B]
- [C]
- [D]

60. Looking at the below 3D volume please identify the posteriorly implanted pig tissue



- [A]
- [B]
- [C]
- [D]

Post-Test Key

1. [B]
2. [C]
3. [B]
4. [A]
5. [A]
6. [C]
7. [C]
8. [C]
9. [B]
10. [A]
11. [C]
12. [B]
13. [A]
14. [A]
15. [B]
16. [C]
17. [D]
18. [B]
19. [A]
20. [B]
21. [C]
22. [B]
23. [A]
24. [C]
25. [A]
26. [D]
27. [C]
28. [B]
29. [D]
30. [B]
31. [A]
32. [D]
33. [C]
34. [C]
35. [A]
36. [A]
37. [B]
38. [B]
39. [D]
40. [C]
41. [A]
42. [C]
43. [A]
44. [B]
45. [C]
46. [A]
47. [C]
48. [A]
49. [B]
50. [A]
51. [A]
52. [C]
53. [D]
54. [B]
55. [A]
56. [D]
57. [C]
58. [B]
59. [A]
60. [C]