

Chapter 1

Evolution of *Setaria*

Elizabeth A. Kellogg

Abstract The genus *Setaria* includes almost 100 species of panicoid grasses. Within the subfamily Panicoideae it falls in the tribe Paniceae, subtribe Cenchrinae. Members of the subtribe are characterized by the presence of sterile branches in the inflorescence, often known as “bristles.” Major clades of *Setaria* are geographically localized, with the African species falling in a distinct clade from the South American ones, which are in turn distinct from the Asian ones. Many species have become weedy and are distributed widely in warm areas throughout the world. Nearly all members of the genus share a chromosome base number of $x=9$, similar to most other members of Paniceae, and polyploidy is common, with some species including tetraploid, hexaploid, and octoploid members. The crop species *S. italica* was domesticated from the weed *S. viridis*, and both share a genome designated as A. A second diploid weed, *S. adhaerens*, is genomically distinct, with a genome designated as B. The tetraploid *S. verticillata* includes both A and B genomes, while tetraploid *S. faberi* appears to be derived from two A-like ancestors.

Keywords *Setaria* • Paniceae • Panicoideae • Poaceae • Polyploidy • Bristle clade

1.1 Relationships of *Setaria* to Other Monocots

The genus *Setaria* is a member of subtribe Cenchrinae, tribe Paniceae, subfamily Panicoideae, family Poaceae, order Poales, in the commelinid clade of monocots (Soreng et al. 2015; Kellogg 2015). Because *Setaria* inherits the characters of each of these larger clades, we will consider each in turn, progressing from the most to the least inclusive.

E.A. Kellogg, Ph.D. (✉)

Donald Danforth Plant Science Center, 975 North Warson Road, St. Louis, MO 63132, USA

e-mail: ekellogg@danforthcenter.org

© Springer International Publishing Switzerland 2017

A. Doust, X. Diao (eds.), *Genetics and Genomics of Setaria*, Plant Genetics and Genomics: Crops and Models 19, DOI 10.1007/978-3-319-45105-3_1

1.1.1 Characteristics of Setaria Shared with the Commelinid Clade, Poales, and Poaceae

1.1.1.1 Commelinids

The commelinid clade includes Poales, Zingiberales (gingers and bananas), and Commelinales (spiderworts and their relatives). All members of this clade have endosperm that is well developed and persists in the seed (Stevens 2012). In addition, the commelinid monocots have unique cell walls. The hemicelluloses in the primary walls are largely arabinoxylans, specifically glucuronoarabinoxylans (Carpita 1996; Withers et al. 2012); the latter appear to be unique to the commelinids. The amount of pectin and protein is fairly low in comparison to eudicots (Carpita 1996). In the secondary walls, major lignin subunits are *p*-coumaric and ferulic acid (Harris and Hartley 1980; Harris and Trethewey 2009). Much of the information on the biochemistry of the commelinid secondary wall comes from grasses (Withers et al. 2012; Petrik et al. 2014; Molinari et al. 2013) but is presumed to apply to all commelinids. All commelinids accumulate silica in their leaves (Stevens 2012). Thus, *Setaria* could be a useful model for studies of endosperm, cell walls, and silica accumulation, with the results of such studies applying not only to grasses, but to other members of the commelinid clade.

1.1.1.2 Poales

The Poales in its current broad sense includes 16 families (Angiosperm Phylogeny Group 2009; Givnish et al. 2010), all of which accumulate silica specifically in the leaf epidermis (Stevens 2012). Silica accumulation protects the plant from pathogenic bacteria and fungi (Isa et al. 2010; Ma and Yamaji 2006), and also appears to reduce insect herbivory (Massey and Hartley 2009; Garbuzov et al. 2011). In addition, deposition of silica provides structural support, reduces the uptake of toxic metals, and regulates water loss (Isa et al. 2010; Ma and Yamaji 2006). One popular theory suggested that production of silica was selected as a defense against mammalian grazers because it would wear down their teeth (Simpson 1951; Baker et al. 1959). However, this idea is not supported by data (Sanson et al. 2007; Strömberg 2006).

Endosperm development in all Poales is unique among angiosperms, with multiple rounds of nuclear division before cell walls form (nuclear endosperm) (Stevens 2012). Few other morphological characters are shared by members of Poales, although many are wind pollinated, often occur in nutrient-poor habitats, and are often fire adapted (Linder and Rudall 2005). Flowers generally occur in tiny clusters called “spikelets” in both Cyperaceae and Poaceae, but the structure of these is quite different and nonhomologous in the two families.

Within Poales, Poaceae fall into the graminid clade, a well-supported group that also includes Flagellariaceae, Restionaceae (which now includes members of the former Centrolepidaceae), Anarthriaceae, Joinvilleaceae, and Ecdociaceae.

Members of the graminid clade have monoporate pollen, with a raised ring or annulus around the pore (Stevens 2012), a character that is retained in *Setaria*. The functional significance of this pollen form is unknown. Nearly all graminids have two-ranked (distichous) sheathing leaves. The endothecium of the anther has girdle-like thickenings. Stigmas are generally plumose, with receptive cells on multicellular branches. The graminids also all share the ability to produce flavones.

The immediate sister group of Poaceae is uncertain. Possible candidates are *Joinvillea*, the sole genus in Joinvilleaceae, or Ecteiocoleaceae, a family with two genera, *Ecteiocolea* and *Georgeantha*. Current data suggest that the two families are sisters, and that the clade is then sister to Poaceae (McKain et al. 2016). Members of both families have conventional monocot flowers with two whorls of perianth parts, and thus their structure sheds little light on the homologies of the grass spikelet (but see (Preston et al. 2009; Kellogg 2015)). Like *Setaria* and other grasses, both Joinvilleaceae and Ecteiocoleaceae have dumbbell-shaped stomatal guard cells. This guard cell shape is thought to enhance the speed of pore opening (Haworth et al. 2011; Franks and Farquhar 2007). Also Joinvilleaceae shares with the grasses the pattern of alternating long and short cells in the epidermis (Campbell and Kellogg 1987). As with many such morphological characteristics, the genetic controls and functional significance of this character are unknown.

1.1.1.3 Poaceae

Poaceae, or Gramineae (both names are correct), is the most speciose of the families in Poales. It includes ca. 12,000 species (Clayton et al. 2006 onwards; Kellogg 2015) and is clearly monophyletic (Kellogg and Campbell 1987; Kellogg and Linder 1995; Vicentini et al. 2008; GPWG 2001; GPWG II 2012).

The grasses all share a distinctive embryo and fruit (GPWG 2001; Kellogg 2015). The seed coat is generally fused to the inner epidermis of the pericarp, forming a single seeded fruit or caryopsis (Fig. 1.1a). Unlike all other commelinid monocots (and indeed most monocots), the grass embryo is highly differentiated (Kellogg 2000; Campbell and Kellogg 1987; Rudall et al. 2005), with a well-developed shoot apical meristem surrounded by a sheath-like structure, the coleoptile, and bearing two or more leaves (Sylvester et al. 2001) (Fig. 1.1a). The root apical meristem is also differentiated and surrounded by a coleorhiza. Attached to the embryo is a large shield-shaped haustorial organ, the scutellum. Together the coleoptile and scutellum appear to represent the sheath and blade, respectively, of a highly modified cotyledon (Takacs et al. 2012).

Also characteristic of Poaceae is the formation of tiny trichomes (microhairs) from the short cells of the leaf epidermis. Microhairs are two-celled, with an elongate apical cell (Johnston and Watson 1976). The functional significance of microhairs is unknown, although it is possible that they could be secretory in some instances. While the ability to produce microhairs is clearly ancestral in the grasses (GPWG 2001) and occurs in *Setaria* as well as all other panicoid species, the cool-season grasses in subfamily Pooideae do not produce them so they are not universal in grasses.

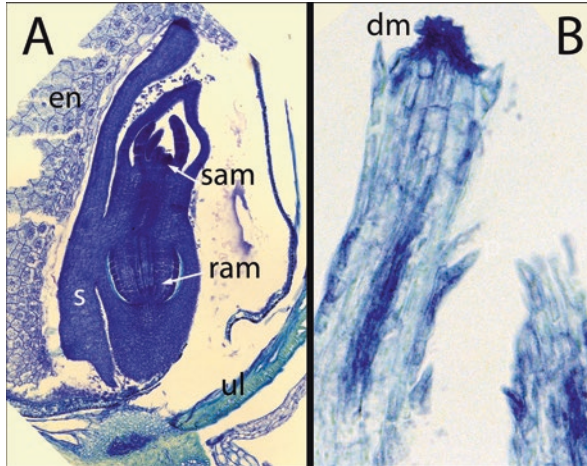


Fig. 1.1 (a) Embryo of *Setaria viridis*. As in all other grasses, the *Setaria* embryo has well-developed shoot and root meristems and a clear scutellum. The deep cleft between the base of the scutellum and the coleurhiza is common in most grasses except for the Pooideae. en, endosperm; sam, shoot apical meristem; ram, root apical meristem; s, scutellum. (b) Apex of young bristle showing collapsed cells. Bristles appear to lose their meristems early in development. dm, degenerating meristem. Photos by John G. Hodge

Poaceae genomes have been studied extensively because genomic information is so essential for breeding efforts. A whole genome duplication occurred in the common ancestor of all grasses, so that many loci are retained in duplicate (Goff et al. 2002; Yu et al. 2002; Paterson et al. 2004, 2009; McKain et al. 2016).

Poaceae is divided into 12 subfamilies (Fig. 1.2) (Kellogg 2015; Soreng et al. 2015). The ones that diverged early in the evolution of the family include only a handful of species (Anomochlooideae, four species, Pharoideae, 12, and Puelioideae, 11) (Kellogg 2015). The vast majority of species fall in the BOP and PACMAD clades, the names of which are acronyms for the included subfamilies. BOP includes Bambusoideae, Oryzoideae, and Pooideae, whereas PACMAD includes Panicoideae, Arundinoideae, Chloridoideae, Micrairoideae, Aristidoideae, and Danthonioideae.

The grass spikelet, which is a tiny spike delimited by two bracts (glumes) and with one or more flowers, characterizes all grasses except Anomochlooideae. The precise timing of origin of the spikelet, however, is unclear. Either the spikelet was present in the common ancestor of all grasses and was then highly modified in Anomochlooideae, or the spikelet originated in the common ancestor of Pharoideae and all remaining grasses (GPWG 2001; Preston et al. 2009; Kellogg 2015) (node 1, Fig. 1.2). In either case, *Setaria* is like all but about four species of grasses in having flowers borne in spikelets.

Other widespread aspects of grasses characterize Puelioideae plus the BOP+PACMAD clades (i.e., descendants of node 2, Fig. 1.2), and not

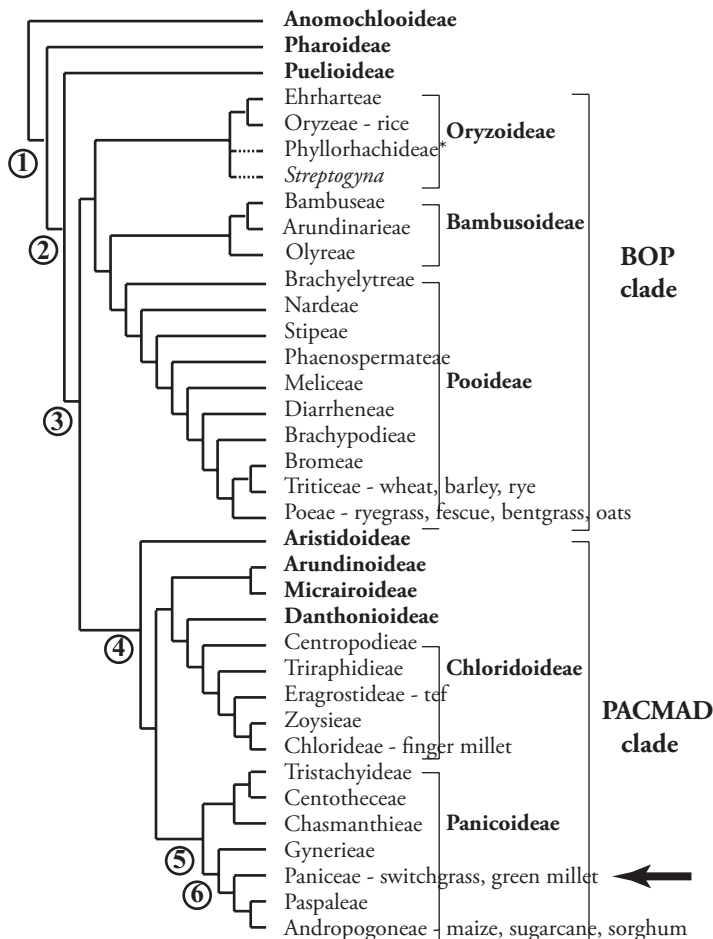


Fig. 1.2 Phylogeny of the grasses, based largely on GPWG II (2012) and redrawn from Kellogg (2015). Arrow points to subfamily Panicoideae, tribe Paniceae, which includes *Setaria*

Anomochlooideae or Pharoideae. For example, style branches and stigmas are reduced to two in this group (although the character reverses in some taxa), and the stigmas have two orders of branching (GPWG 2001). Spikelets each have multiple flowers (another character that reverses frequently). Anther walls have a middle layer that breaks down during development, and the inner walls of the endothelial cells become fibrous at maturity.

The female gametophyte in the grasses is fairly conventional in early development, with an egg, two synergids, a binucleate central cell, and antipodal cells. However, in all investigated species other than the early diverging genera *Streptochaeta* and *Pharus* (Sajo et al. 2007, 2008), the antipodals continue to divide (Anton and Cocucci 1984; Evans and Grossniklaus 2009; Shadowsky 1926). The function of these extra divisions is unknown.

The BOP+PACMAD clade (descendants of node 3, Fig. 1.2) has no obvious morphological synapomorphy. The Grass Phylogeny Working Group (GPWG 2001) suggested that lack of a pseudopetiole in the leaves, reduction of lodicule number to 2 and stamen number to 3 might be synapomorphic. Although these characters reverse in a number of lineages, they all characterize *Setaria*.

Members of the PACMAD clade (node 4, Fig. 1.2) have nothing obvious in common. They are thought to share an elongated mesocotyl internode in the embryo, but relatively few species have actually been investigated for this character and it is unclear how reliable or consistent it is (GPWG 2001). The clade also includes all 24 origins of the C₄ photosynthetic pathway in grasses (GPWG II 2012).

1.1.2 Characteristics of *Setaria* Shared with Subfamily Panicoideae, Tribe Paniceae, and Subtribe Cenchrinae

1.1.2.1 Panicoideae

Nearly 1/3 of the species of Poaceae are in subfamily Panicoideae. Panicoideae s.s. (node 6, Fig. 1.2) was one of the earliest subfamilies to be recognized as distinct. In 1810, Robert Brown noted that the group (which he called Paniceae) mostly has spikelets with exactly two flowers, with the upper one bisexual and the lower one staminate or sterile (Brown 1810, 1814). Recent phylogenetic work has shown that Panicoideae s.s. is part of a larger clade which now bears the name Panicoideae (node 5, Fig. 1.2), in which the spikelet morphology is more variable (Sánchez-Ken and Clark 2007, 2010).

Spikelets in Panicoideae s.s. are dorsiventrally compressed. The glumes and lemmas are generally not folded and are borne ab- and adaxially in relation to the spikelet-bearing axis. This pattern of compression contrasts with that of most other grasses such as rice, tef, and *Brachypodium*, in which the glumes and lemma are both folded along the midrib, a pattern known as lateral compression. In these taxa, the glumes and lemmas initiate at right angles to the spikelet-bearing axis. As with many such morphological characters, the significance of this highly consistent difference is unknown.

Spikelet development in the panicoids is basipetal, with the distal flower maturing before the proximal one (Bess et al. 2005; Doust and Kellogg 2002; Malcomber and Kellogg 2004). This pattern is similar to that in rice, but distinct from what is found in Pooideae, Chloridoideae, and other major groups.

Silica bodies in the leaf epidermis of panicoid grasses are generally bilobed in surface view and symmetrical in cross section (Piperno 2006; Piperno and Pearsall 1998). Nothing is known about deposition of silica in the grass epidermis and the mechanism by which silica body shape is defined.

Early phylogenetic work in subfamily Panicoideae found that the phylogeny reflected chromosome numbers rather than photosynthetic pathway as had been thought

previously (Gómez-Martínez and Culham 2000; Aliscioni et al. 2003; Giussani et al. 2001). The ancestral base chromosome number of the subfamily is unknown but most likely to be 11 or 12, and the number was then reduced in the common ancestor of Panicoideae s.s. One descendant of this ancestor acquired a base number of $x=9$, a number that now characterizes the tribe Paniceae, whereas the other descendant acquired a number of $x=10$, which is shared by the tribes Andropogoneae and Paspaleae.

1.1.2.2 Paniceae

Within Paniceae, major clades are strongly supported by both nuclear, chloroplast, and mitochondrial sequences (Vicentini et al. 2008; GPWG II 2012; Washburn et al. 2015). All analyses to date have identified clades corresponding to subtribes Cenchrinae, Melinidinae, Panicinae, Boivinellinae, Neurachninae, and Anthephorinae (Fig. 1.3). The genus *Dichantheium* is monophyletic and could be placed in its own subtribe (Dichantheiinae (Soreng et al. 2015)). In addition, there is an unnamed clade made up of the genera *Sacciolepis*, *Trichantheium*, and *Kellochoa* plus a number of species formerly placed in *Panicum* (node 4, Fig. 1.3) (Morrone et al. 2012; GPWG II 2012; Zuloaga et al. 2011; Nicola et al. 2015).

Cenchrinae, Melinidinae, and Panicinae form a robust group (the MPC clade) (Morrone et al. 2012; GPWG II 2012) (node 2, Fig. 1.3), with Cenchrinae and Melinidinae sisters (node 3, Fig. 1.3 (Washburn et al. 2015)). The clade was first identified as the “C₄ three subtypes” clade by Giussani et al. (2001) because all members are C₄, but each subtribe exhibits a different subtype of the C₄ pathway. Cenchrinae includes species that are NADP-ME subtype, Melinidinae members are PCK, and Panicinae are NAD-ME. Each C₄ subtype has characteristic leaf anatomy (Hattersley 1987; Hattersley and Watson 1992; Prendergast and Hattersley 1987; Prendergast et al. 1987). In Panicinae and Melinidinae, each vein is surrounded by an inner sheath of thick walled cells, the mestome sheath, and an outer sheath of parenchymatous cells. Carbon reduc-

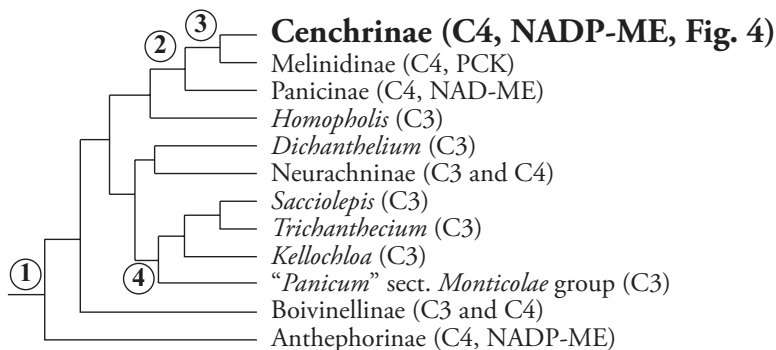


Fig. 1.3 Phylogeny of Paniceae based on chloroplast, mitochondrial, and nuclear rDNA gene sequences (Washburn et al. 2015; Nicola et al. 2015). The clade made up of Cenchrinae, Melinidinae, and Panicinae is found in all molecular phylogenies. Other relationships, particularly those surrounding node 1, are contradicted by other gene trees

tion occurs in the latter. In Cenchrinae, and thus in *Setaria*, as in most NADP-ME grasses, veins are surrounded by a single sheath, a derived condition in the subtribe.

Relationships among the other clades of Paniceae are unclear. Chloroplast data place *Dichanthelium* as sister to the MPC clade, whereas nuclear data place it sister to all other Paniceae (Vicentini et al. 2008) and combined chloroplast, mitochondrial, and nuclear RNA data place it sister to Neurachninae (Washburn et al. 2015). Conversely, Anthephorinae is placed sister to all Paniceae by chloroplast data (node 1, Fig. 1.3), but sister to the MPC clade by nuclear genes.

1.1.2.3 Cenchrinae

The Cenchrinae is also known as the “bristle clade,” because almost all members of the clade form sterile branches (“bristles”) in the inflorescence. These sterile branches originate as ordinary branches, but instead of forming spikelets, they grow out and terminate blindly (Doust and Kellogg 2002). The bristles may form a meristem at their apex, but this often simply aborts, leaving a small collapsed set of cells (Fig. 1.1b). Bristles may be restricted to the ends of branches, or a bristle may be paired with each spikelet, or individual spikelets may be surrounded by an involucre of bristles. In the latter case, the bristles may be terete or flattened.

Two species, *Zuloagaea bulbosa* and “*Panicum*” *antidotale*, lack bristles. (The latter species is unrelated to true *Panicum*, which is in Panicinae, but has not yet been transferred to another genus.) Developmental studies in *Zuloagaea* show that early development in that species is strikingly similar to that of *Panicum miliaceum* (*Panicum* s.s.) and there is no evidence of bristle formation at any point in development (Bess et al. 2005, 2006).

The phylogeny of the group is poorly resolved largely because no one has yet investigated it using a sufficient number of markers. Nonetheless, a few strong clades can be identified. The *Cenchrus* clade (*Cenchrus* sensu lato, Fig. 1.4) includes both *Cenchrus* and the former genus *Pennisetum*, plus the monotypic *Odontelytrum* (Chemisquy et al. 2010; Donadio et al. 2009; Morrone et al. 2012). All species of *Cenchrus* s.l. form an abscission zone at the base of the primary branch such that the spikelets fall from the plant surrounded by an involucre of bristles. Developmentally, the species are also distinct because the primary branch enlarges isodiametrically, rather than growing primarily in a proximo-distal direction (Doust & Kellogg 2002). While many species of *Cenchrus* s.s. are easily identified by their flattened bristles forming an involucre around the spikelets, others intergrade morphologically with the former *Pennisetum*. Thus, the boundary between the genera is not sharp, consistent with the pattern found in phylogenetic studies (Donadio et al. 2009; Chemisquy et al. 2010).

Primary branches of the inflorescence are spirally arranged in most species, whereas the secondaries and higher order branches are distichous (Bess et al. 2005; Doust and Kellogg 2002; Kellogg et al. 2004, 2013).

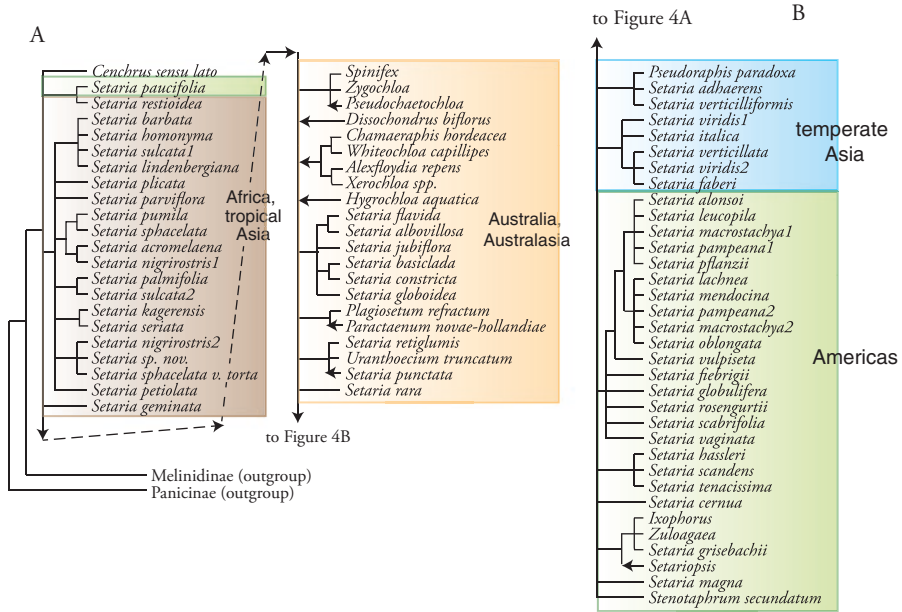


Fig. 1.4 Phylogeny of Cenchrinae based on the chloroplast gene *ndhF*, focusing on species in *Setaria*. Redrawn from Kellogg et al. (2009). Arrows show the approximate placement of additional taxa included in the study of GPWG II (2012). All branches shown have either parsimony or maximum likelihood bootstrap values >80, or Bayesian posterior probability >0.95, or both. Brown box indicates taxa native to Africa or tropical Asia, yellow is Australia and Australasia, blue is temperate Asia and green is the Americas, mostly South and Central America

1.2 Relationships Within the Genus *Setaria*

1.2.1 Phylogeny and Characteristics of the Genus

Species of *Setaria* are described in detail in two monographs, which together cover 99 species (Morrone et al. 2014; Pensiero 1999), although Clayton et al. (2006 onward) lists 103 names. The genus has no unique character and as currently defined is likely to be para- or polyphyletic. The current phylogeny shows a number of well-supported clades corresponding largely to geography, but relationships among them are unresolved, making generic circumscription impossible at the moment (Fig. 1.4). As currently circumscribed, *Setaria* includes the members of Cenchrinae that do not fall in the *Cenchrus* clade, have bisexual spikelets (i.e., are not *Spinifex* or *Zygochloa*), and lack the distinctive characters of the various oligotypic genera such as *Dissochondrus*, *Paractaenum*, or *Plagiosetum*. Almost certainly, *Setaria* will need to be expanded to include some of these elements, but without a solid phylogeny it is hard to find a good rationale for doing so.

Species of *Setaria* occur in warm regions throughout the world, and in diverse habitats (Morrone et al. 2014). Some species, such as *S. sulcata* and *S. palmifolia*, occur in

disturbed areas in moist forest shade. Others, such as *S. nigrirostris* and *S. sphacelata*, are found in damp grasslands, and still others, such as *S. rara* and *S. reflexa*, in dry open habitats. A handful of species, notably *S. viridis* and *S. pumila*, are weedy and have followed human activity to spread far beyond their original distribution.

The number and position of bristles in the inflorescence varies considerably among *Setaria* species (Morrone et al. 2014). In species such as *Setaria palmifolia*, each spikelet is accompanied by a single bristle. In other species, such as *S. parviflora* and *S. viridis*, each mature spikelet is surrounded by multiple bristles. The relationship between the number of spikelets and the number of bristles is developmentally complex however (Doust and Kellogg 2002). Bristle and spikelet identity are specified early in inflorescence development. In some cases, all spikelets develop to maturity so that the number of bristles per spikelet reflects meristem identity decisions. In other species, however, late forming spikelets fail to develop so that high numbers of bristles per spikelet reflect a process of spikelet abortion rather than branch identity specification.

In some species of *Setaria* the primary branches of the inflorescence are themselves unbranched (i.e., the spikelets are borne directly on the primary branches) and the branches end in a sharp bristle-like tip (Morrone et al. 2014). The inflorescence thus looks superficially similar to that in *Paspalum*, but the presence of the terminal bristle is diagnostic; species with this inflorescence morphology have often been placed in a genus *Paspalidium*. However, species occur in which some spikelets are associated with bristles in addition to the one at the branch tip and thus the morphology intergrades with that of *Setaria* sensu stricto. Recognizing this morphological intermediacy, all *Paspalidium* species have been transferred to *Setaria* (Veldkamp 1994; Webster 1993, 1995), and the transfer has been supported by phylogenetic data (Morrone et al. 2012; Kellogg et al. 2009; GPWG II 2012).

The species of *Setaria* vary widely in inflorescence architecture and leaf form (Morrone et al. 2014). Inflorescences may be narrow with short stiff lateral branches (the inflorescence thus shaped like a bottle brush, e.g., *S. pumila*, *S. sphacelata*, *S. nigrirostris*), broad and lax with spreading branches (shaped like a Christmas tree, e.g., *S. grandis*, *S. sulcata*, *S. lindenbergiana*), or sparse with few spreading primary branches (like an antenna, e.g., *S. jubiflora*, *S. flavida*). Each primary branch may produce spikelets directly (e.g., *S. jubiflora*, *S. flavida*, *S. rara*) or may rebranch up to six times (e.g., *S. parviflora*, *S. pumila*). Plants may be annual (e.g., *S. faberi*, *S. acromelaena*, *S. sagittifolia*, *S. viridis*) or perennial (most species), and may be a few cm (e.g., some specimens of *S. clementii*, *S. ustilata*) to over 1 m (e.g., *S. grandis*) tall. Spikelets are generally ovate but sometimes may be elongate or orbicular. Leaves are generally flat, but some species (e.g., *S. sulcata*, *S. palmifolia*) have striking folded leaves. The latter were once placed in their own section because the leaf morphology is so distinctive, but they do not form a clade in molecular phylogenies. Sagittate leaves are found in *S. sagittifolia* and *S. appendiculata*.

As in all groups of grasses, polyploids are common (Table 1.1). Except for polyploids involving *Setaria viridis* (see next section) the history of few of these has been disentangled, although it would be straightforward to do so using low-copy nuclear genes. Sequences of the nuclear gene *Knotted1* have shown that *S. flavida*

Table 1.1 Published chromosome numbers for species of *Setaria*

Species	Origin	<i>n</i>	Reference	<i>2n</i>	Reference
<i>adhaerens</i>	Asia	9	Gupta and Singh (1977)		
<i>apiculata</i>	Australia			36	Le Thierry d'Ennequin et al. (1998) ^a
<i>barbata</i>	Africa	18	Olorode (1975)	54	Gadella (1977)
		27	Christopher and Abraham (1976) and Dujardin (1978)	56	Sarkar et al. (1976)
		28	Sarkar et al. (1976)		
<i>faberi</i>	Asia			36	Probatova and Sokolovskaya (1983) and Warwick et al. (1987, 1997)
<i>fiebrigii</i>	South America	18	Oliveira Freitas-Sacchet (1980) and Oliveira Freitas-Sacchet et al. (1984)	36	Pensiero (1999)
<i>flavida</i>	Australia	18	Bir and Chauhan (1990)	44	Sharma and Sharma (1979)
		27	Mehra (1982), Bir and Sahni (1983) and Nadeem Ahsan et al. (1994)	54	Sinha et al. (1990)
		56	Bir and Chauhan (1990)		
<i>geminata</i>	Africa	9	Rao and Mwasumbi (1981) and Nadeem Ahsan et al. (1994)		
<i>grisebachii</i>	Central and South America			18	Reeder (1971)
<i>homonyma</i>	Africa	10	Singh and Gupta (1977)		
		18	Mehra and Sharma (1975)		

(continued)

Table 1.1 (continued)

Species	Origin	<i>n</i>	Reference	<i>2n</i>	Reference
<i>italica</i>	Asia	9	Khosla and Sharma (1973), Gupta and Singh (1977), Mehra (1982) and Sinha et al. (1990)	18	Christopher and Abraham (1976), Li and Chen (1985) and Sinha et al. (1990), Chikara and Gupta (1979), Frey et al. (1981), Zhou et al. (1989), Kozuharov and Petrova (1991), Li et al. (1996), Wu and Bai (2000), and Le Thierry d'Ennequin et al. (1998) ^a
				36	Li and Chen (1985)
<i>kagerensis</i>	Africa			18	Lakshmi and Yacob (1978)
<i>lachnea</i>	South America	18	Gupta and Singh (1977)	36	Bowden and Seen (1962), Manero de Zamelzú and Ochoa de Suárez (1991), Pensiero (1999), and Le Thierry d'Ennequin et al. (1998) ^a
<i>leucopila</i>	SW US, Mexico, South America			54, 68, 72	Emery (1957a)
<i>longiseta</i>	Africa	18	(Olorode 1975)	36	
<i>macrostachya</i>	North, Central, and South America		Gupta and Singh (1977)	54	Emery (1957b), Pensiero (1999), and Le Thierry d'Ennequin et al. (1998) ^a
				72	Gupta and Singh (1977)
<i>magna</i>	North, Central, and South America			36	Brown (1948)
<i>nigrirostris</i>	Africa	9	Gupta and Singh (1977)	18	Raman et al. (1959) and Le Thierry d'Ennequin et al. (1998) ^a
		18	Spies and duPlessis (1986)	36, 54	Spies and duPlessis (1986), Raman et al. (1959), and Le Thierry d'Ennequin et al. (1998) ^a
		27	Spies and duPlessis (1986)		

(continued)

Table 1.1 (continued)

Species	Origin	<i>n</i>	Reference	2 <i>n</i>	Reference
<i>oblongata</i>	Argentina, Bolivia	18	Tiranti and Genghini (2000)		
<i>palmifolia</i>	Asia, Africa	27	Mehra and Sharma (1975), Mehra (1982) and Christopher and Abraham (1976)	54	Christopher and Abraham (1976)
				36	Le Thierry d'Ennequin et al. (1998) ^a
<i>pampeana</i>	Argentina			ca. 50	Pensiero (1999)
<i>parviflora</i>	North, Central, and South America	18	Gupta and Singh (1977), Oliveira Freitas-Sacchet (1980) and Mehra (1982)	36	Gould and Soderstrom (1967), Pohl and Davidse (1971), Norrmann et al. (1994), and Le Thierry d'Ennequin et al. (1998) ^a
				72	Gould and Soderstrom (1967) and Fernández and Queiróz (1969)
<i>pflanzii</i>	South America			36	Caponio and Pensiero (2002)
<i>plicata</i>	Asia	36	Mehra (1982)		
<i>pumila</i>	Africa, Asia	9, 18 + 0–2B, 27	Sahni (1989)	36	Sahni (1989), Kozuharov and Petrova (1991), Baltisberger (1988), Devesa et al. (1991), and Singh and Godward (1960)
		36	Sahni (1989) and Nadeem Ahsan et al. (1994)	54	Le Thierry d'Ennequin et al. (1998) ^a
<i>restioidea</i>	Africa	18	Dujardin (1978)		
<i>rosengurtii</i>	South America	54	Oliveira Freitas-Sacchet et al. (1984) and Oliveira Freitas-Sacchet (1980)		

(continued)

Table 1.1 (continued)

Species	Origin	<i>n</i>	Reference	<i>2n</i>	Reference
<i>scabrifolia</i>	South America	18	Oliveira Freitas-Sacchet et al. (1984) and Oliveira Freitas-Sacchet (1980)		
<i>sphacelata</i>	Africa	9	Gupta and Singh (1977), Dujardin (1978) and Rao and Mwasumbi (1981)	18	deWet (1958)
		18	Gupta and Singh (1977), Bir and Sahni (1986, 1987) and Sahni (1989)	36	deWet (1954), deWet and Anderson (1956), and Le Thierry d'Ennequin et al. (1998) ^a
		27	Gupta and Singh (1977)	54	Gupta and Singh (1977) and deWet (1958)
<i>sulcata</i>	Central and South America			18	Gupta and Singh (1977)
		16	Oliveira Freitas-Sacchet et al. (1984) and Oliveira Freitas-Sacchet (1980)	32	Oliveira Freitas-Sacchet (1980)
		18	Olorode (1975) and Dujardin (1978)	36	Quarín (1977), deWet and Anderson (1956), and Le Thierry d'Ennequin et al. (1998) ^a
				54	Moffett and Hurcombe (1949)
<i>tenacissima</i>	Central and South America			36	Sede et al. (2010)
<i>vaginata</i>	South America	18	Oliveira Freitas-Sacchet et al. (1984) and Oliveira Freitas-Sacchet (1980)		

(continued)

Table 1.1 (continued)

Species	Origin	<i>n</i>	Reference	<i>2n</i>	Reference
<i>verticillata</i>	Eurasia	9	Christopher and Abraham (1976) ^b	18	deWet (1954) and Wu and Bai (2000) ^b
		18	Gupta and Singh (1977), Sahni (1989), Bir and Sahni (1986) and Bala and Sachdeva (1989, 1990)	36	Váchová and Feráková (1980)
		27	Christopher and Abraham (1976), Gupta and Singh (1977), Mehra (1982), Sahni (1989), Bir and Sahni (1983), Sahni and Bir (1985), Bala and Sachdeva (1989, 1990) and Sinha et al. (1990)	54	Khosla and Sharma (1973), Gupta and Singh (1977), and Sinha et al. (1990)
		36, 54	Sahni (1989) and Bir and Sahni (1986)		
<i>viridis</i>	Asia	9	Christopher and Abraham (1976), Gupta and Singh (1977) and Koul and Gohil (1988, 1991)	18	Khosla and Sharma (1973), Chopanov and Yurtsev (1976), Magulaev (1976), Váchová (1978), Kliphuis and Wieffering (1979), Belaeva and Siplivinsky (1981), Löve and Löve (1981), Guzik (1984), Li and Chen (1985), Kozuharov and Petrova (1991), Xu et al. (1992), Moffett and Hurcombe (1949), Le Thierry d'Ennequin et al. (1998), ^a and (Layton and Kellogg 2014) ^a
		18	Löve and Löve (1981), Saxena and Gupta (1969) and Mulligan (1984)		

(continued)

Table 1.1 (continued)

Species	Origin	<i>n</i>	Reference	<i>2n</i>	Reference
<i>vulpiseta</i>	Central and South America	9	Sede et al. (2010)	36	Pensiero (1999)
		18	Oliveira Freitas-Sacchet et al. (1984) and Oliveira Freitas-Sacchet (1980)	54	Norrmann et al. (1994)

Table reproduced and updated from Kellogg et al. (2009). Names of species follow Morrone et al. (2014) and Pensiero (1999) and have been updated from those in the original publications

^aEstimated by flow cytometry

^bLikely misidentified specimens of *S. adhaerens*

and *S. jubiflora* are the products of a single polyploidization event (Doust et al. 2007). One of the genomes that produced the tetraploid ancestor of the two species also appears to be shared with *S. grisebachii* (diploid) and also with *Stenotaphrum secundatum* (a presumed diploid), *Ixophorus unisetus* (tetraploid), and *Zuloagaea bulbosa* (tetraploid). The origin of the other genome is less clear.

A handful of published chromosome counts appear to have a base number other than $x=9$ (Table 1.1). One accession of *S. homonyma* is reported to have $n=10$ (Singh and Gupta 1977), one accession of *S. sphacelata* is apparently $n=18+1B$ (Dujardin 1978); chromosome spreads are illustrated in both papers, and the counts appear accurate, although Singh and Gupta acknowledge that the *S. homonyma* count might be $9+1B$. An accession of *S. sulcata* may have $n=16$ and $2n=32$ (Oliveira Freitas-Sacchet et al. 1984; Oliveira Freitas-Sacchet 1980), but the count is not documented photographically.

1.2.2 The Temperate Asian Clade

The annual species *Setaria italica*, *S. viridis*, *S. faberi*, and *S. verticillata* form a clade in chloroplast phylogenies (Kellogg et al. 2009; Layton and Kellogg 2014) and in phylogenies using the nuclear genes encoding *knotted1* and 5S rDNA (Zhao et al. 2013; Layton and Kellogg 2014; Doust et al. 2007) (Fig. 1.4). *S. viridis* is the wild ancestor of the cultivated species *S. italica*, as documented by data from many sources, and the two remain interfertile (Le Thierry d'Ennequin et al. 2000; Hunt et al. 2008; Hirano et al. 2011; Darmency et al. 1987; Shi et al. 2008; Huang et al. 2014). This relationship is discussed more extensively in the chapters by Jia (Chap. 2), Huang and Feldman (Chap. 3), and Diao and Jia (Chap. 4) in this book.

The diploid genome of *S. italica* was designated as the A genome by Li et al. (1945); diploid *S. viridis* shares the A genome with *S. italica*, as verified by hybrid fertility, and cytogenomic, enzymatic, and molecular markers (Li et al. 1945; Wang

et al. 1998; Benabdelmouna et al. 2001a, b; Darmency and Pernes 1987). The diploid genome of *S. adhaerens* is distinct from that of *S. viridis* and *S. italica* and has been designated as the B genome by Benabdelmouna et al. (2001b); this designation has been confirmed by Wang et al. (2009) and Zhao et al. (2013). In addition, sequence data show that *S. adhaerens* and *S. viridis* are not closely related (Fig. 1.4) (Layton and Kellogg 2014). The diploid genome of *S. grisebachii* from America was identified as genome C due to its poor hybridization signals with both the A genome of *S. viridis* and the B genome of *S. adhaerens* (Wang et al. 2009).

A combination of molecular phylogenetics and cytogenetics has identified the progenitors of several polyploid taxa. Chromosomes of the tetraploid species *S. pumila* (often erroneously known as *S. glauca* (Morrone et al. 2014)) and *S. parviflora* strongly cross-hybridized but no hybridization signal was detected when the chromosomes of these two species were hybridized with probes derived from the known A, B, and C genomes; thus *S. pumila* and *S. parviflora* were designated as having genome D (Zhao et al. 2013). Similarly, the lack of hybridization signals with A, B, C, and D donor genomes led to the recognition of the E genome from *S. palmifolia* and the F genome from *S. arenaria* (Zhao et al. 2013). (Note that *S. arenaria* is a dubious name according to Morrone et al. (2014) and thus it is unclear what material was used by Zhao et al. (2013).) GISH also identified an apparent A genome autotetraploid, *S. apiculata* (= *queenslandica*). Analysis of *kn1* and *5S rDNA* sequences was consistent with the GISH results (Zhao et al. 2013).

The tetraploid *S. faberi* formed from an A genome (*S. viridis*) plus another genome from an unknown source closely related to *S. viridis* (Layton and Kellogg 2014). *S. faberi* is morphologically similar to *S. viridis*, but in the former species the upper glume is slightly shorter, so that the upper 1/4–1/3 of the upper lemma is visible (Layton and Kellogg 2014). In contrast, the upper glume of *S. viridis* completely covers the upper lemma and often slightly overlaps the lower lemma at the apex of the spikelet. *S. faberi* also has macrohairs on the adaxial surface of the leaves, whereas the leaves of *S. viridis* are glabrous. In addition, *S. faberi* is less tolerant of drought than *S. viridis* is and often grows in more mesic habitats such as the margins of cultivated fields, whereas *S. viridis* occurs more frequently in poor soil and cracks in pavement (Layton and Kellogg 2014).

Tetraploids classified as *S. verticillata* and *S. verticilliformis* each have one genome from the diploid *S. adhaerens* and one from *S. viridis* (Benabdelmouna et al. 2001b). Phylogenetic data using the low-copy nuclear marker *knotted1* on the same plant accessions confirmed the cytogenetic results, showing that *S. verticillata* and *S. verticilliformis* each have two loci, consistent with their ploidy level (Layton and Kellogg 2014). One *kn1* locus is related to that of the diploid *S. adhaerens* and the other to that of the diploid *S. viridis*.

The phylogenetic and cytogenetic data settle confusion over the taxonomy of *S. verticillata*, *S. adhaerens*, and *S. verticilliformis*. Some authors have considered the three species as synonymous (Rominger 1962; Doust et al. 2007; Kellogg et al. 2009), others have distinguished *S. verticillata* and *S. verticilliformis* but synonymized *S. adhaerens* with *S. verticillata* (Morrone et al. 2014), and still others maintain all three species as distinct (Rominger 2003). Both *S. verticillata* s.s. and *S. adhaerens* have retrorse prickles on the bristles, a character that is distinctive within

the genus and easily observed in the field because it makes the inflorescence adhere to clothing. Because this morphological character appears in the diploid and its derived polyploid, we can infer that it must be controlled by the B genome. *S. adhaerens* is distinctive in being a small plant with glabrous sheath margins and strigose hairs with papillose bases on the abaxial leaf surfaces. *S. verticillata*, in contrast, has sheath margins that are ciliate distally and abaxial leaf surfaces that are scabrous (Layton and Kellogg 2014). Some diploid chromosome numbers are reported for *S. verticillata* (Table 1.1) (Rominger 2003), but these are likely to be from misidentified specimens of *S. adhaerens* (Layton and Kellogg 2014).

S. verticilliformis, in contrast, has antrorse prickles but otherwise is morphologically indistinguishable from *S. verticillata*. Because of the genomic and morphological similarity of the two species, Layton and Kellogg (2014) recommend that the former species be placed in synonymy with the latter. They also recommend that *S. adhaerens* be recognized as a separate entity.

1.3 Summary

All organisms contain evidence of their evolutionary history and *Setaria* is no exception. Like all commelinid monocots, species of *Setaria* have extensive endosperm in their seeds, cell walls with glucuronoarabinoxylans, lignin with p-coumaric and ferulic acid, and leaves that accumulate silica. Like all Poales, the leaf silica accumulates in the epidermis, and like members of the graminid clade, the pollen is monoporate with a raised ring around the pore. *Setaria* has dumbbell shaped stomatal guard cells, and alternating long and short cells in the epidermis.

Like all other grasses, *Setaria* has a highly differentiated embryo, including a large haustorial derivative of the cotyledon, the scutellum. The fruit is a caryopsis in which the seed coat is fused to the inner epidermis of the pericarp. The antipodals proliferate in the female gametophyte. Short cells of the leaf epidermis produce bicellular microhairs. The genome has undergone a whole genome duplication dating to the origin of the family in the late Cretaceous. Like most but not quite all grasses, *Setaria* has flowers in spikelets with more than one flower per spikelet and two style branches and stigmas.

Like most other panicoid grasses (i.e., those in tribes Paniceae, Paspaleae, and Andropogoneae), *Setaria* has spikelets with exactly two flowers, the upper one bisexual and the lower one staminate or sterile. Spikelets are dorsiventrally compressed and develop basipetally. Leaf silica bodies are bilobed in surface view and symmetrical in cross section. Along with other members of tribe Paniceae, *Setaria* has a chromosome base number of $x=9$. Members of subtribe Cenchrinae share C_4 photosynthesis of the NADP-ME subtype and a single sheath surrounding the vascular bundle. The inflorescence bears sterile branches or bristles.

The genus *Setaria* itself has no diagnostic characters and is probably para- or polyphyletic as currently defined. Phylogenetic data are insufficient and not conclusive. Major clades correspond to geography and do not correlate well with morphol-

ogy. The Asian clade includes the model species *S. viridis*, along with its domesticated derivative *S. italica*, and its polyploid descendants *S. faberi*, *S. verticillata*, and *S. verticilliformis*.

References

- Aliscioni SS, Giussani LM, Zuloaga FO, Kellogg EA. A molecular phylogeny of *Panicum* (Poaceae: Paniceae): tests of monophyly and phylogenetic placement within the Paniceae. *Am J Bot.* 2003;90:796–821.
- Angiosperm Phylogeny Group. An update of the Angiosperm Phylogeny Group classification for the orders and families of flowering plants: APG III. *Bot J Linn Soc.* 2009;161:105–21.
- Anton AM, Cocucci AE. The grass megagametophyte and its possible phylogenetic implications. *Plant Syst Evol.* 1984;146:117–21.
- Baker G, Jones LHP, Wardrop ID. Cause of wear in sheep's teeth. *Nature.* 1959;184:1583–4.
- Bala S, Sachdeva SK. Biochemical variability at cytotype level in *Setaria verticillata* (L.) Beauv. complex. *Aspects Pl Sci.* 1989;11:483–93.
- Bala S, Sachdeva SK. Cytological and biochemical study of co-occurring diploid, tetraploid and hexaploid individuals of *Setaria verticillata* (L.) Beauv. (Poaceae). *Phytologia.* 1990;68:276–92.
- Baltisberger M. Chromosomenzahlen einiger Pflanzen aus Albanien. II. *Ber Geobot Inst Eidg Tech Hochsch Stift Rübel Zür.* 1988;54:42–50.
- Belaeva VA, Siplivinsky VN. In: Löve A, editor. Chromosome number reports LXXIII. *Taxon*, vol. 30; 1981. pp. 857–860
- Benabdelmouna A, Abirached-Darmency M, Darmency H. Phylogenetic and genomic relationships in *Setaria italica* and its close relatives based on the molecular diversity 5S and 18S-5.8S-25S rDNA genes. *Theor Appl Genet.* 2001a;103:668–77.
- Benabdelmouna A, Shi Y, Abirached-Darmency M, Darmency H. Genomic in situ hybridization (GISH) discriminates between the A and B genomes in diploid and tetraploid *Setaria* species. *Genome.* 2001b;44:685–90.
- Bess EC, Doust AN, Kellogg EA. A naked grass in the “bristle clade”: a phylogenetic and developmental study of *Panicum* section *Bulbosa* (Paniceae: Poaceae). *Int J Plant Sci.* 2005;166:371–81.
- Bess EC, Doust AN, Davidse G, Kellogg EA. *Zuloagaea*, a new genus of tropical grass within the “bristle clade” (Poaceae: Paniceae). *Syst Bot.* 2006;31:656–70.
- Bir SS, Chauhan HS. SOCGI plant chromosome number reports. IX. *J Cytol Genet.* 1990;25:147–8.
- Bir SS, Sahni M. SOCGI plant chromosome number reports. I. *J Cytol Genet.* 1983;18:58–9.
- Bir SS, Sahni M. SOCGI plant chromosome number reports. IV. *J Cytol Genet.* 1986;21:152–4.
- Bir SS, Sahni M. Chromosomal and morphological variations in grasses of Punjab. *J Cytol Genet.* 1987;22:12–22.
- Bowden WM, Seen HA. Chromosome numbers in 28 grass genera from South America. *Can J Bot.* 1962;40:1115–24.
- Brown R. *Prodromus florae Novae Hollandiae.* London: J. Johnson; 1810.
- Brown R. *A voyage to Terra Australis.* London: G. & W. Nicol; 1814.
- Brown WV. A cytological study in the Gramineae. *Am J Bot.* 1948;35:382–95.
- Campbell CS, Kellogg EA. Sister group relationships of the Poaceae. In: Soderstrom TR, Hilu KW, Campbell CS, Barkworth ME, editors. *Grass systematics and evolution.* Washington, DC: Smithsonian Institution; 1987.
- Caponio I, Pensiero JF. Comportamiento citológico y reproductivo de *Setaria pflanzii* (Poaceae). *Darwiniana.* 2002;40:17–23.
- Carpita NC. Structure and biogenesis of the cell walls of grasses. *Annu Rev Plant Physiol Plant Mol Biol.* 1996;47:445–76.
- Chemisquy MA, Giussani LM, Scataglini M, Kellogg EA, Morrone O. Phylogenetic studies favor the unification of *Pennisetum*, *Cenchrus* and *Odontelytrum*: a nuclear, chloroplast and morphological combined analysis. *Ann Bot.* 2010;106:107–30.

- Chikara J, Gupta PK. Karyological studies in the genus *Setaria*. I. Variability within *Setaria italica* (L.) Beauv. *J Cytol Genet.* 1979;14:75–9.
- Chopanov P, Yurtsev BN. Chromosome numbers of some grasses of Turkmenia. II. *Bot Zhurn SSSR.* 1976;61:1240–4.
- Christopher J, Abraham A. Studies on the cytology and phylogeny of South Indian grasses. III. Subfamily VI: Panicoideae, tribe Paniceae. *Cytologia.* 1976;41:621–37.
- Clayton WD, Harman KT, Williamson H. GrassBase—the online world grass flora [Online]. 2006 onwards. <http://www.kew.org/data/grasses-db.html> (2010).
- Darmency H, Pernes J. An inheritance study of domestication in foxtail millet using an interspecific cross. *Plant Breed.* 1987;99:30–3.
- Darmency H, Zangre GR, Pernes J. The wild-weed-crop complex in *Setaria*: a hybridization study. *Genetica.* 1987;75:103–7.
- Devesa JA, Ruiz T, Viera MC, Tormo R, Vázquez F, Carrasco JP, Ortega A, Pastor J. Contribución al conocimiento cariológico de las Poaceae en Extremadura (España) III. *Bol Soc Broteriana, Ser 2.* 1991;64:35–74.
- deWet MJM. Chromosome numbers of a few South African grasses. *Cytologia.* 1954;19:97–103.
- deWet MJM. Additional chromosome numbers in Transvaal grasses. *Cytologia.* 1958;23:113–8.
- deWet MJM, Anderson LJ. Chromosome numbers in Transvaal grasses. *Cytologia.* 1956;21:1–10.
- Donadio S, Giussani LM, Kellogg EA, Zuloaga FO, Morrone O. A molecular phylogeny of *Pennisetum* and *Cenchrus* (Poaceae-Paniceae) based on the *trnL-F*, *rpl16* chloroplast markers. *Taxon.* 2009;58:392–404.
- Doust AN, Kellogg EA. Inflorescence diversification in the panicoid “bristle grass” clade (Paniceae, Poaceae): evidence from molecular phylogenies and developmental morphology. *Am J Bot.* 2002;89:1203–22.
- Doust AN, Penly AM, Jacobs SWL, Kellogg EA. Congruence, conflict and polyploidization shown by nuclear and chloroplast markers in the monophyletic “bristle clade” (Paniceae, Panicoideae, Poaceae). *Syst Bot.* 2007;32:531–44.
- Dujardin M. Chromosome numbers of some tropical African grasses from western Zaire. *Can J Bot.* 1978;56:2138–52.
- Emery WHP. A cyto-taxonomic study of *Setaria macrostachya* (Gramineae) and its relatives in the southwestern United States and Mexico. *Bull Torrey Bot Club.* 1957a;84:94–105.
- Emery WHP. A study of reproduction in *Setaria macrostachya* and its relatives in the southwestern United States and northern Mexico. *Bull Torrey Bot Club.* 1957b;84:106–21.
- Evans MMS, Grossniklaus U. The maize megagametophyte. In: Bennetzen JL, Hake SC, editors. *Handbook of maize: its biology.* Berlin: Springer; 2009.
- Fernández A, Queiróz M. Contribution à la connaissance cytotoxonomique des spermatophita du Portugal. *Bol Soc Broteriana, Ser 2.* 1969;18:3–140.
- Franks PJ, Farquhar GD. The mechanical diversity of stomata and its significance in gas-exchange control. *Plant Physiol.* 2007;143:78–87.
- Frey L, Mizianty M, Mirek Z. Chromosome numbers of Polish vascular plants. *Fragm Florist Geobot.* 1981;27:581–90.
- Gadella TWJ. Chromosome number reports LVI. *Taxon.* 1977;26:257–74.
- Garbuzov M, Reidinger S, Hartley SE. Interactive effects of plant-available soil silicon and herbivory on competition between two grass species. *Ann Bot.* 2011;108:1355–63.
- Giussani LM, Cota-Sánchez JH, Zuloaga FO, Kellogg EA. A molecular phylogeny of the grass subfamily Panicoideae (Poaceae) shows multiple origins of C₄ photosynthesis. *Am J Bot.* 2001;88:1993–2012.
- Givnish TJ, Ames M, Mcneal JR, Mc Kain MR, Steele PR, de Pamphilis CW, Graham SW, Pires JC, Stevenson DW, Zomlefer WB, Briggs BG, Duvall MR, Moore MJ, Heaney JM, Soltis DE, Soltis PS, Thiele K, Leebens-Mack JH. Assembling the tree of monocotyledons: plastome sequence phylogeny and evolution of Poales. *Ann Mo Bot Gard.* 2010;97:584–616.
- Goff SA, Ricke D, Lan T-H, Presting G, Wang R, Dunn M, Glazebrook J, Sessions A, Oeller P, Varma H, Hadley D, Hutchison D, Martin C, Katagiri F, Lange BM, Moughamer T, Xia Y,

- Budworth P, Zhong J, Miguel T, Paszkowski U, Zhang S, Colbert M, Sun W-L, Chen L, Cooper B, Park S, Wood TC, Mao L, Quail P, Wing R, Dean R, Yu Y, Zharkikh A, Shen R, Sahasrabudhe S, Thomas A, Cannings R, Gutin A, Pruss D, Reid J, Tavtigian S, Mitchell J, Eldredge G, Scholl T, Miller RM, Bhatnagar S, Adey N, Rubano T, Tusneem N, Robinson R, Feldhaus J, Macalma T, Oliphant A, Briggs S. A draft sequence of the rice genome (*Oryza sativa* L. ssp. *japonica*). *Science*. 2002;296:92–100.
- Gómez-Martínez R, Culham A. Phylogeny of the subfamily Panicoideae with emphasis on the tribe Paniceae: evidence from the *trnL-F* cp DNA region. In: Jacobs SWL, Everett J, editors. *Grasses: systematics and evolution*. Collingwood: Commonwealth Scientific and Industrial Research Organization (CSIRO); 2000.
- Gould FW, Soderstrom TR. Chromosome numbers of tropical American grasses. *Am J Bot*. 1967;54:676–83.
- Grass Phylogeny Working Group (GPWG). Phylogeny and subfamilial classification of the Poaceae. *Ann Mo Bot Gard*. 2001;88:373–457.
- Grass Phylogeny Working Group II (GPWG II). New grass phylogeny resolves deep evolutionary relationships and discovers C_4 origins. *New Phytol*. 2012;193:304–12.
- Gupta PK, Singh RV. Variations in chromosomes and flavonoids in *Setaria* Beauv. *Nucleus*. 1977;20:167–71.
- Guzik MB. Khromosomnye chisla nekotorykh dikorastushchkh zlakov Predural'ja. *Ekologija Opylenija Rastenij*. 1984;8:82–6.
- Harris PJ, Hartley RD. Phenolic constituents of the cell walls of monocotyledons. *Biochem Syst Ecol*. 1980;8:153–60.
- Harris PJ, Trethewey JAK. The distribution of ester-linked ferulic acid in the cell walls of angiosperms. *Phytochem Rev*. 2009;9:19–33.
- Hattersley PW. Variations in photosynthetic pathway. In: Soderstrom TR, Hilu KW, Campbell CS, Barkworth ME, editors. *Grass systematics and evolution*. Washington, DC: Smithsonian Institution Press; 1987. p. 49–64.
- Hattersley PW, Watson L. Diversification of photosynthesis. In: Chapman GP, editor. *Grass evolution and domestication*. Cambridge: Cambridge University Press; 1992.
- Haworth M, Elliott-Kingston C, Mc Elwain JC. Stomatal control as a driver of plant evolution. *J Exp Bot*. 2011;62:2419–23.
- Hirano R, Naito K, Fukunaga K, Watanabe KN, Ohsawa R, Kawase M, Belzile F. Genetic structure of landraces in foxtail millet (*Setaria italica* (L.) P. Beauv.) revealed with transposon display and interpretation to crop evolution of foxtail millet. *Genome*. 2011;54:498–506.
- Huang P, Feldman M, Schroder S, Bahri BA, Diao X, Zhi H, Estep M, Baxter I, Devos KM, Kellogg EA. Population genetics of *Setaria viridis*, a new model system. *Mol Ecol*. 2014;23:4192–295.
- Hunt HV, Van Der Linden M, Liu X, Motuzaitė-Matuzevičiute G, Colledge S, Jones MK. Millets across Eurasia: chronology and context of early records of the genera *Panicum* and *Setaria* from archaeological sites in the Old World. *Veg Hist Archaeobot*. 2008;17(suppl):S5–18.
- Isa M, Bai S, Yokoyama T, Ma JF, Ishibashi Y, Yuasa T, Iwaya-Inoue M. Silicon enhances growth independent of silica deposition in a low-silica rice mutant, *lsi1*. *Plant Soil*. 2010;331:361–75.
- Johnston CR, Watson L. Microhairs: a universal characteristic of non-festucoid grass genera? *Phytomorphology*. 1976;26:297–301.
- Kellogg EA. The grasses: a case study in macroevolution. *Ann Rev Ecol Syst*. 2000;31:217–38.
- Kellogg EA. Poaceae. In: Kubitzki K, editor. *The families and genera of vascular plants*. Berlin: Springer; 2015. pp. 1–416.
- Kellogg EA, Campbell CS. Phylogenetic analyses of the Gramineae. In: Soderstrom TR, Hilu KW, Campbell CS, Barkworth ME, editors. *Grass systematics and evolution*. Washington, DC: Smithsonian Institution Press; 1987. p. 310–22.
- Kellogg EA, Linder HP. Phylogeny of Poales. In: Rudall PJ, Cribb PJ, Cutler DF, Humphries CJ, editors. *Monocotyledons: systematics and evolution*. Kew: Royal Botanic Gardens; 1995.

- Kellogg EA, Hiser KM, Doust AN. Taxonomy, phylogeny, and inflorescence development of the genus *Ixophorus* (Panicoideae: Poaceae). *Int J Plant Sci.* 2004;165:1089–105.
- Kellogg EA, Aliscioni SS, Morrone O, Pensiero J, Zuloaga FO. A phylogeny of *Setaria* (Poaceae, Panicoideae, Paniceae) and related genera, based on the chloroplast gene *ndhF*. *Int J Plant Sci.* 2009;170:117–31.
- Kellogg EA, Camara PEAS, Rudall PJ, Ladd P, Malcomber ST, Whipple CJ, Doust AN. Early inflorescence development in the grasses (Poaceae). *Front Plant Sci.* 2013;4:250. doi:[10.3389/fpls.2013.00250](https://doi.org/10.3389/fpls.2013.00250).
- Khosla PK, Sharma ML. Cytological observations on some species of *Setaria*. *Nucleus.* 1973;26:38–41.
- Kliphuis E, Wieffering JH. IOPB chromosome number reports LXIV. *Taxon.* 1979;28:398–400.
- Koul KK, Gohil RN. SOCGI plant chromosome number reports. VI. *J Cytol Genet.* 1988;23:38–52.
- Koul KK, Gohil RN. Cytogenetic studies on some Kashmir grasses. VIII. Tribe Agrostideae, Festuceae and Paniceae. *Cytologia.* 1991;56:437–52.
- Kozuharov SI, Petrova AV. Chromosome numbers of Bulgarian angiosperms. *Fitologija.* 1991;39:72–7.
- Lakshmi N, Yacob Z. A new chromosome number report in *Setaria kagerensis* Mez. *Curr Sci.* 1978;47:813.
- Layton DJ, Kellogg EA. Morphological, phylogenetic, and ecological diversity of the new model species *Setaria viridis* (Poaceae: Paniceae) and its close relatives. *Am J Bot.* 2014;101:539–57.
- Le Thierry d'Ennequin M, Panaud O, Brown S, Siljak-Yakoviev S, Sarr A. First evaluation of nuclear DNA content in *Setaria* genus by flow cytometry. *J Hered.* 1998;89:556–9.
- Le Thierry d'Ennequin M, Panaud O, Toupance B, Sarr A. Assessment of genetic relationships between *Setaria italica* and its wild relative *S. viridis* using AFLP markers. *Theor Appl Genet.* 2000;100:1061–6.
- Li X, Chen R. The karyotype analysis of *Setaria italica* and *S. viridis*. *J Wuhan Bot Res.* 1985;3:409–12.
- Li HW, Li CH, Pao WK. Cytological and genetical studies of the interspecific cross of the cultivated foxtail millet, *Setaria italica* (L.) Beauv., and the green foxtail millet, *S. viridis* L. *J Am Soc Agron.* 1945;37:32–54.
- Li M, Song YC, Liu H. Studies on G-banding karyotypes in millet. *J Henan Vocat Teach Coll.* 1996;24:1–7.
- Linder HP, Rudall PJ. Evolutionary history of Poales. *Ann Rev Ecol Evol Syst.* 2005;36:107–24.
- Löve A, Löve D. Chromosome number reports LXXI. *Taxon.* 1981;30:509–11.
- Ma JF, Yamaji N. Silicon uptake and accumulation in higher plants. *Trends Pl Sci.* 2006;11:392–7.
- Magulaev AJ. The chromosome numbers of flowering plants of the northern Caucasus. Pt. II. In: Galushko AI, editor. *Flora of the northern Caucasus*, vol. 2. Rostov: Rostovskiy Universitet; 1976.
- Malcomber ST, Kellogg EA. Heterogeneous expression patterns and separate roles of the SEPALLATA gene *Leafy Hull Sterile (LHS1)* in grasses. *Plant Cell.* 2004;16:1692–706.
- Manero de Zamelzú D, Ochoa de Suárez B. Número cromosómico de *Setaria leiantha* (Poaceae). *Agriscientia.* 1991;8:79.
- Massey FP, Hartley SE. Physical defences wear you down: progressive and irreversible impacts of silica on insect herbivores. *J Anim Ecol.* 2009;78:281–91.
- McKain MR, Tang H, McNeal JR, Ayyampalayam S, Davis JI, dePamphilis CW, Givnish TJ, Pires JC, Stevenson DW, Leebens-Mack JH. A phylogenomic assessment of ancient polyploidy and genome evolution across the Poales. *Genome Biol Evol.* 2016;8:1150–64.
- Mehra PN. Cytology of East Indian grasses. India: Chandigarh; 1982.
- Mehra PN, Sharma ML. Cytological studies in some central and eastern Himalayan grasses. II. The Paniceae. *Cytologia.* 1975;40:75–89.
- Moffett AA, Hurcombe R. Chromosome numbers of South African grasses. *Heredity.* 1949; 3:369–73.

- Molinari HB, Pellny TK, Freeman J, Shewry PR, Mitchell RA. Grass cell wall feruloylation: distribution of bound ferulate and candidate gene expression in *Brachypodium distachyon*. *Front Plant Sci.* 2013;4:50.
- Morrone O, Aagesen L, Scataglini MA, Salaricato DL, Denham SS, Chemisquy MA, Sede SM, Giussani LM, Kellogg EA, Zuloaga FO. Phylogeny of the Paniceae (Poaceae: Panicoideae): integrating plastid DNA sequences and morphology into a new classification. *Cladistics.* 2012;28:333–56.
- Morrone O, Aliscioni SA, Veldkamp JF, Pensiero J, Zuloaga FO, Kellogg EA. A revision of the Old World species of *Setaria*. *Syst Bot Monogr.* 2014;96:1–161.
- Mulligan GA. Chromosome numbers of some plants native and naturalized in Canada. *Nat Can.* 1984;111:447–9.
- Nadeem Ahsan SM, Vahidy AA, Ali SI. Chromosome numbers and incidence of polyploidy in Panicoideae (Poaceae) from Pakistan. *Ann Mo Bot Gard.* 1994;81:775–83.
- Nicola MV, Lizarazu MA, Scataglini MA. Phylogenetic analysis and taxonomic position of section *Verrucosa* of *Panicum* and its relationship with taxa of the *Sacciolepis-Trichantheicum* clade (Poaceae: Panicoideae: Paniceae). *Plant Syst Evol.* 2015;301:2247.
- Norrmann GA, Quarán CL, Killeen TJ. Chromosome numbers in Bolivian grasses (Gramineae). *Ann Mo Bot Gard.* 1994;81:768–74.
- Oliveira Freitas-Sacchet AMD. Chromosome number reports LXIX. *Taxon.* 1980;29:703–4.
- Oliveira Freitas-Sacchet AMD, Boldrini II, Born GG. Cytogenetics and evolution of the native grasses of Rio Grande do Sul, Brazil, *Setaria* Beauv. (Gramineae). *Rev Bras Genet.* 1984;7:535–48.
- Olorode O. Additional chromosome counts in Nigerian grasses. *Brittonia.* 1975;27:63–8.
- Paterson AH, Bowers JE, Chapman BA. Ancient polyploidization predating divergence of the cereals, and its consequences for comparative genomics. *Proc Natl Acad Sci U S A.* 2004;101:9903–8.
- Paterson AH, Bowers JE, Bruggmann R, Dubchak I, Grimwood J, Gundlach H, Haberer G, Hellsten U, Mitros T, Poliakov A, Schmutz J, Spannagl M, Tang H, Wang X, Wicker T, Bharti AK, Chapman J, Feltus FA, Gowik U, Grigoriev IV, Lyons E, Maher CA, Martis M, Narechania A, Ollillar RP, Penning BW, Salamov AA, Wang Y, Zhang L, Carpita NC, Freeling M, Gingle AR, Hash CT, Keller B, Klein P, Kresovich S, McCann MC, Ming R, Peterson DG, Mehboob UR, Ware D, Westhoff P, Mayer KF, Messing J, Rokhsar DS. The *Sorghum bicolor* genome and the diversification of grasses. *Nature.* 2009;457:551–6.
- Pensiero JF. Las especies sudamericanas del género *Setaria* (Poaceae, Paniceae). *Darwiniana.* 1999;37:37–151.
- Petrik DL, Karlen SD, Cass CL, Padmakshan D, Lu F, Liu S, Le Bris P, Antelme S, Santoro N, Wilkerson CG, Sibout R, Lapierre C, Ralph J, Sedbrook JC. p-Coumaroyl-CoA:monolignol transferase (PMT) acts specifically in the lignin biosynthetic pathway in *Brachypodium distachyon*. *Plant J.* 2014;77:713–26.
- Piperno DR. *Phytoliths: a comprehensive guide for archaeologists and paleoecologists.* New York: AltaMira; 2006.
- Piperno DR, Pearsall DM. The silica bodies of tropical American grasses: morphology, taxonomy, and implications for grass systematics and fossil phytolith identification. *Smithson Contrib Bot.* 1998;85:1–40.
- Pohl RW, Davidse G. Chromosome numbers of Costa Rican grasses. *Brittonia.* 1971;23:293–324.
- Prendergast HDV, Hattersley PW. Australian C₄ grasses (Poaceae): leaf blade anatomical features in relation to C₄ acid decarboxylation types. *Aust J Bot.* 1987;35:355–82.
- Prendergast HDV, Hattersley PW, Stone NE. New structural/biochemical associations in leaf blades of C₄ grasses (Poaceae). *Aust J Plant Physiol.* 1987;14:403–20.
- Preston JC, Christensen A, Malcomber ST, Kellogg EA. MADS-box gene expression and implications for developmental origins of the grass spikelet. *Am J Bot.* 2009;96:1419–29.
- Probatova NS, Sokolovskaya AP. Chromosome numbers in Adoxaceae, Chloranthaceae, Cupressaceae, Juncaceae, Poaceae. *Bot Zhurn SSSR.* 1983;68:1683.

- Quarín CL. Recuentos cromosómicos en gramíneas de Argentina subtropical. *Hickenia*. 1977;1:73–8.
- Raman VS, Chandrasekharan P, Krishnaswami D. Chromosome numbers in Gramineae. *Curr Sci*. 1959;28:453–4.
- Rao PN, Mwasumbi LB. Chromosome number reports LXX. *Taxon*. 1981;30:79–80.
- Reeder JR. Notes on Mexican grasses. IX. Miscellaneous chromosome numbers 3. *Brittonia*. 1971;23:105–17.
- Rominger JMD. Taxonomy of *Setaria* (Gramineae) in North America. *Illinois Biol Monogr*. 1962;29:1–132.
- Rominger JMD. *Setaria* P. Beauv. In: Barkworth ME, Capels KM, Long S, Piep MB, editors. *Flora of North America North of Mexico, Magnoliophyta: Commelinidae (in part): Poaceae, part 1*, vol. 25. New York: Oxford University Press; 2003.
- Rudall PJ, Stuppy W, Cunniff J, Kellogg EA, Briggs BG. Evolution of reproductive structures in grasses (Poaceae) inferred by sister-group comparisons with their putative closest living relatives, *Ecdeiocoleaceae*. *Am J Bot*. 2005;92:1432–43.
- Sahni M. Cytological variability in genus *Setaria* P. Beauv. from Punjab plains. *Aspects Pl Sci*. 1989;11:467–73.
- Sahni M, Bir SS. SOCGI plants chromosome number reports—III. *J Cytol Genet*. 1985;20:205–6.
- Sajo MG, Longhi-Wagner H, Rudall PJ. Floral development and embryology in the early-divergent grass *Pharus*. *Int J Plant Sci*. 2007;168:181–91.
- Sajo MG, Longhi-Wagner HM, Rudall PJ. Reproductive morphology of the early-divergent grass *Sreptochaeta* and its bearing on the homologies of the grass spikelet. *Plant Syst Evol*. 2008;275:245–55.
- Sánchez-Ken JG, Clark LG. Phylogenetic relationships within the Centothecoideae + Panicoideae clade (Poaceae) based on *ndhF* and *rpl16* intron sequences and structural data. *Aliso*. 2007;23:487–502.
- Sánchez-Ken JG, Clark LG. Phylogeny and a new tribal classification of the Panicoideae s.l. (Poaceae) based on plastid and nuclear sequence data and structural data. *Am J Bot*. 2010;97:1732–48.
- Sanson GD, Kerr SA, Gross KA. Do silica phytoliths really wear mammalian teeth? *J Archaeol Sci*. 2007;34:526–31.
- Sarkar AK, Datta N, Mallick R, Chatterjee U. In IOPB chromosome number reports LIV. *Taxon*. 1976;25:648–9.
- Saxena BK, Gupta BK. Chromosome numbers of some grasses of Dehra Dun. *Bull Bot Surv India*. 1969;11:443–4.
- Sede S, Escobar A, Morrone O, Zuloaga FO. Chromosome studies in American Paniceae (Poaceae, Panicoideae). *Ann Mo Bot Gard*. 2010;97:128–38.
- Shadowsky AE. Der antipodale Apparat bei Gramineen. *Flora*. 1926;120:344–70.
- Sharma ML, Sharma K. Cytological studies in the North Indian grasses. *Cytologia*. 1979;44:861–72.
- Shi Y, Wang T, Li Y, Darmency H. Impact of transgene inheritance on the mitigation of gene flow between crops and their wild relatives: the example of foxtail millet. *Genetics*. 2008;180:969–75.
- Simpson GG. *Horses: the story of the horse family in the modern world and through sixty million years of history*. Oxford: Oxford University Press; 1951.
- Singh DN, Godward MBE. Cytological studies in the Gramineae. *Heredity*. 1960;15:193–9.
- Singh RV, Gupta PK. Cytological studies in the genus *Setaria* (Gramineae). *Cytologia*. 1977;42:483–93.
- Sinha RRP, Bhardwaj AK, Singh RK. SOCGI plant chromosome number reports. IX. *J Cytol Genet*. 1990;25:140–3.
- Soereng RJ, Peterson PM, Romaschenko K, Davidse G, Zuloaga FO, Judziewicz EJ, Filgueiras TS, Davis JI, Morrone O. A worldwide phylogenetic classification of the Poaceae (Gramineae). *J Syst Evol*. 2015;53:117–37.
- Spies JJ, Du Plessis H. Chromosome studies on African plants. 1. *Bothalia*. 1986;16:87–8.

- Stevens PF. Angiosperm phylogeny website. Version 12, July 2012 [and more or less continuously updated since]. 2001 onwards. [Online]. 2012. <http://www.mobot.org/MOBOT/research/APweb/>
- Strömberg CAE. Evolution of hypsodonty in equids: testing a hypothesis of adaptation. *Paleobiology*. 2006;32:236–58.
- Sylvester AW, Parker-Clark V, Murray GA. Leaf shape and anatomy as indicators of phase change in the grasses: comparison of maize, rice and bluegrass. *Am J Bot*. 2001;88:2157–67.
- Takacs EM, Li J, Du C, Ponnala L, Janick-Buckner D, Yu J, Muehlbauer GJ, Schnable PS, Timmermans MCP, Sun Q, Nettleton D, Scanlon MJ. Ontogeny of the maize shoot apical meristem. *Plant Cell*. 2012;24:3219–34.
- Tiranti IN, Genghini RN. Caracteres cuantitativos de la microsporogénesis de cuatro especies de *Setaria* (Poaceae). *Bol Soc Argent Bot*. 2000;35:331–3.
- Váchová M. Index to chromosome numbers of Slovakian flora. Pt. 6. *Acta Fac Rerum Nat Univ Comen Bot*. 1978;26:1–42.
- Váchová M, Feráková V. Chromosome number reports LXIX. *Taxon*. 1980;29:722–3.
- Veldkamp JF. Miscellaneous notes on southeast Asian Gramineae. IX. *Setaria* and *Paspalidium*. *Blumea*. 1994;39:373–84.
- Vicentini A, Barber JC, Giussani LM, Aliscioni SS, Kellogg EA. Multiple coincident origins of C₄ photosynthesis in the Mid- to Late Miocene. *Glob Chang Biol*. 2008;14:2963–77.
- Wang ZM, Devos KM, Liu CJ, Wang RQ, Gale MD. Construction of RFLP-based maps of foxtail millet, *Setaria italica* (L.) P. Beauv. *Theor Appl Genet*. 1998;96:31–6.
- Wang Y, Zhi H, Li W, Li H, Wang Y, Huang Z, Diao X. A novel genome of C and the first autotetraploid species in the *Setaria* genus identified by genomic in situ hybridization (GISH). *Genet Res Crop Evol*. 2009;56:843–50.
- Warwick SI, Thompson BK, Black LD. Life history and allozyme variation in populations of the weed species *Setaria faberi*. *Can J Bot*. 1987;65:1396–402.
- Warwick SI, Crompton C, Black LD, Wotjas W. IOPB chromosome data 11. *News Int Organ Plant Biosyst*. 1997;26/27:25–6.
- Washburn JD, Schnable JC, Davidse G, Pires JC. Phylogeny and photosynthesis of the grass tribe Paniceae. *Am J Bot*. 2015;102:1493–505.
- Webster RD. Nomenclature of *Setaria* (Poaceae: Paniceae). *Sida*. 1993;15:447–89.
- Webster RD. Nomenclatural changes in *Setaria* and *Paspalidium* (Poaceae: Paniceae). *Sida*. 1995;16:439–46.
- Withers S, Lu F, Kim H, Zhu Y, Ralph J, Wilkerson CG. Identification of grass-specific enzyme that acylates monolignols with p-coumarate. *J Biol Chem*. 2012;287:8347–55.
- Wu QM, Bai JL. Cytogenetic and isoenzymic studies on *Setaria* millet and *S. verticillata* (2X) and *S. verticiformis* (4X). *Acta Botan Boreali Occiden Sin*. 2000;20:954–9.
- Xu BS, Weng RF, Zhang MZ. Chromosome numbers of Shanghai plants I. *Investig Studium Nat*. 1992;12:48–65.
- Yu J, Hu S, Wang J, Wong GK-S, Li S, Liu B, Deng Y, Dai L, Zhou Y, Zhang X, Cao M, Liu J, Sun J, Tang J, Chen Y, Huang X, Lin W, Ye C, Tong W, Cong L, Geng J, Han Y, Li L, Li W, Hu G, Huang X, Li W, Li J, Liu Z, Li L, Liu J, Qi Q, Liu J, Li L, Li T, Wang X, Lu H, Wu T, Zhu M, Ni P, Han H, Dong W, Ren X, Feng X, Cui P, Li X, Wang H, Xu X, Zhai W, Xu Z, Zhang J, He S, Zhang J, Xu J, Zhang K, Zheng X, Dong J, Zeng W, Tao L, Ye J, Tan J, Ren X, Chen X, He J, Liu D, Tian W, Tian C, Xia H, Bao Q, Li G, Gao H, Cao T, Wang J, Zhao W, Li P, Chen W, Wang X, Zhang Y, Hu J, Wang J, Liu S, Yang J, Zhang G, Xiong Y, Li Z, Mao L, Zhou C, Zhu Z, Chen R, Hao B, Zheng W, Chen S, Guo W, Li G, Liu S, Tao M, Wang J, Zhu L, Yuan L, Yang H. A draft sequence of the rice genome (*Oryza sativa* L. ssp. *indica*). *Science*. 2002;296:79–92.
- Zhao M, Zhi H, Doust AN, Li W, Wang Y, Li H, Jia G, Wang Y, Zhang N, Diao X. Novel genomes and genome constitutions identified by GISH and 5S rDNA and *knotted1* genomic sequences in the genus *Setaria*. *BMC Genomics*. 2013;14:244.
- Zhou X, Sun PY, Chou YL, Hou BY, Sun T. A study on the basic karyotype of *Setaria italica*. *Sci Agric Sin*. 1989;22:30–4.
- Zuloaga FO, Morrone O, Scataglini MA. Monograph of *Trichantheicum* (Poaceae, Paniceae). *Syst Bot Monogr*. 2011;94:1–101.