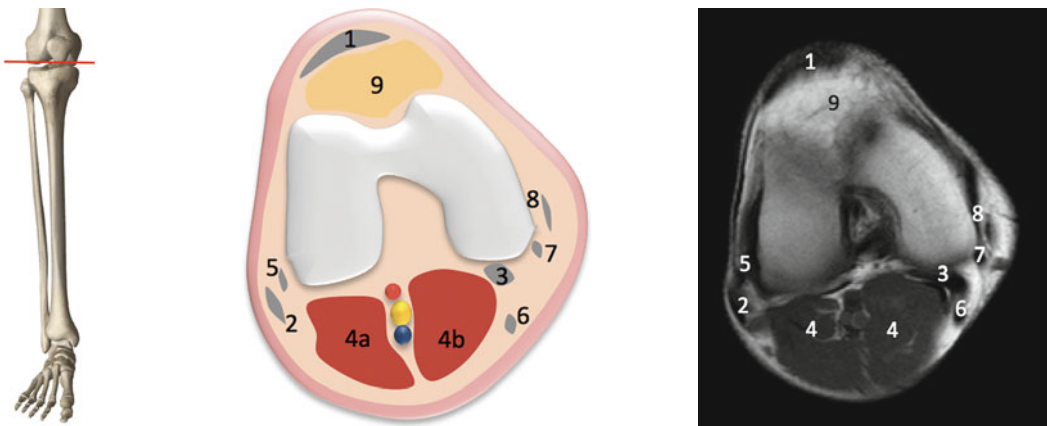


Alessandro Muda and Amedeo Baldari

In this chapter we provide a series of images demonstrating cross-sectional anatomy of leg compartments at different cranio-caudal levels. Every set of images includes a skeleton model

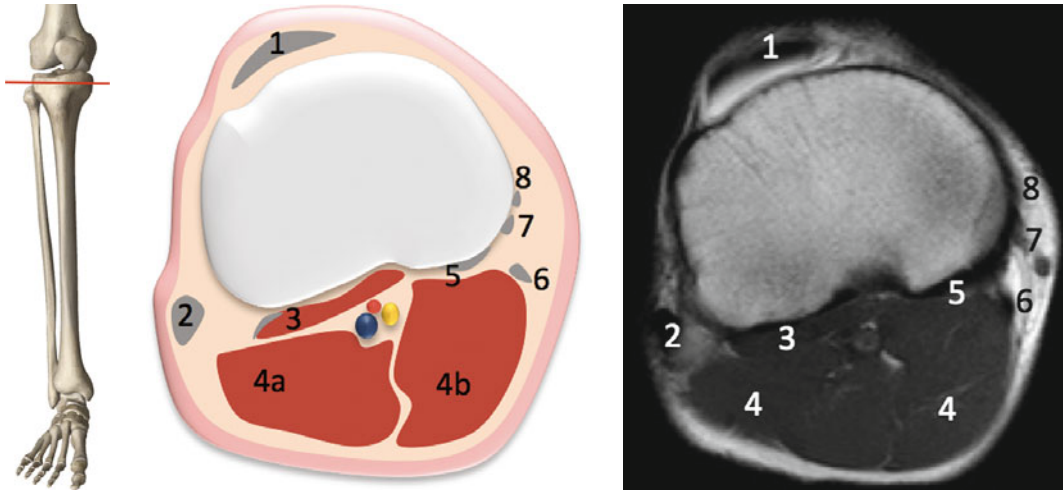
that serves as an orientation aid (a), pertinent anatomical scheme (b), and corresponding SE T1w axial MRI scan (c).



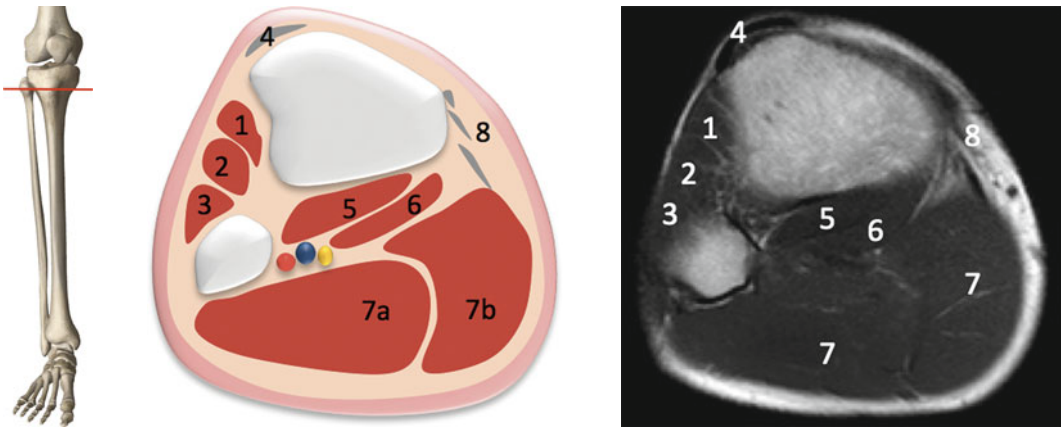
**Fig. 19.1** 1 patellar ligament; 2 biceps femoris tendon; 3 semimembranosus tendon; 4 gastrocnemius lateralis (a) and medialis (b); 5 popliteus tendon; 6 semitendinosus tendon; 7 gracilis tendon; 8 sartorius tendon; 9 Hoffa's fat pad

A. Muda (✉)  
 Dipartimento di Radiologia,  
 IRCCS Ospedale San Martino IST, Genoa, Italy  
 e-mail: [alessandro.muda@tiscali.it](mailto:alessandro.muda@tiscali.it)

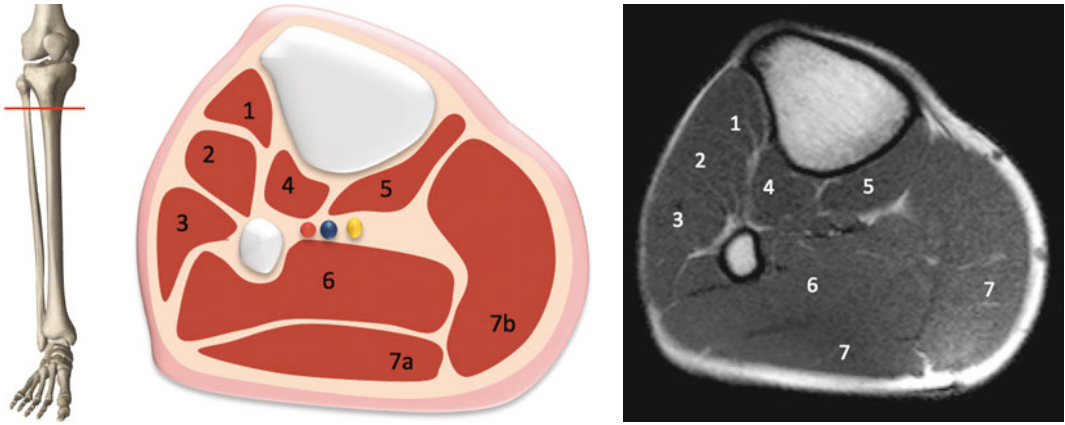
A. Baldari  
 Medical Division, UC Sampdoria Spa, Genoa, Italy



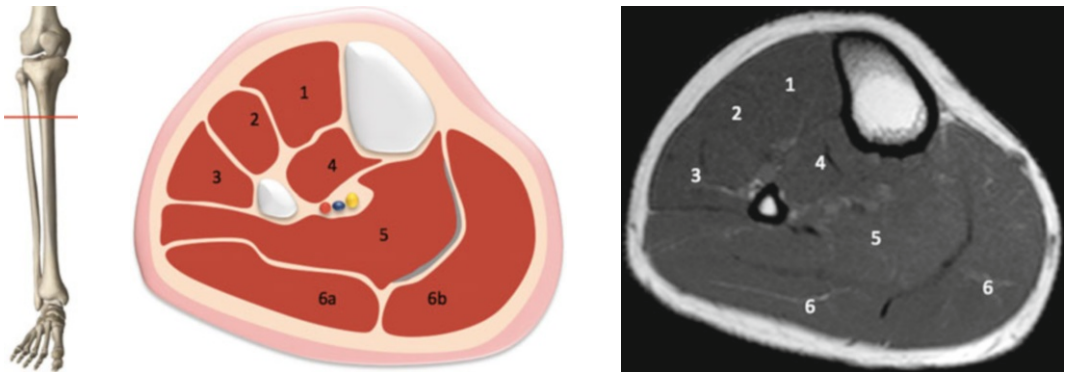
**Fig. 19.2** 1 patellar ligament; 2 biceps femoris tendon; 3 popliteus; 4 gastrocnemius lateralis (a) and medialis (b); 5 semimembranosus tendon; 6 semitendinosus tendon; 7 gracilis tendon; 8 sartorius tendon



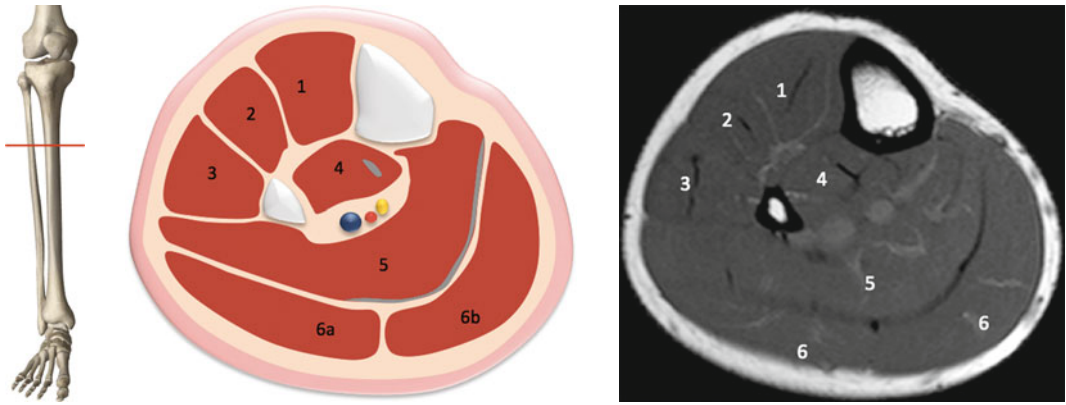
**Fig. 19.3** 1 tibialis anterior; 2 extensor hallucis; 3 extensor digitorum; 4 patellar ligament; 5 popliteus; 6 soleus; 7 gastrocnemius lateralis (a) and medialis (b); 8 pes anserinum



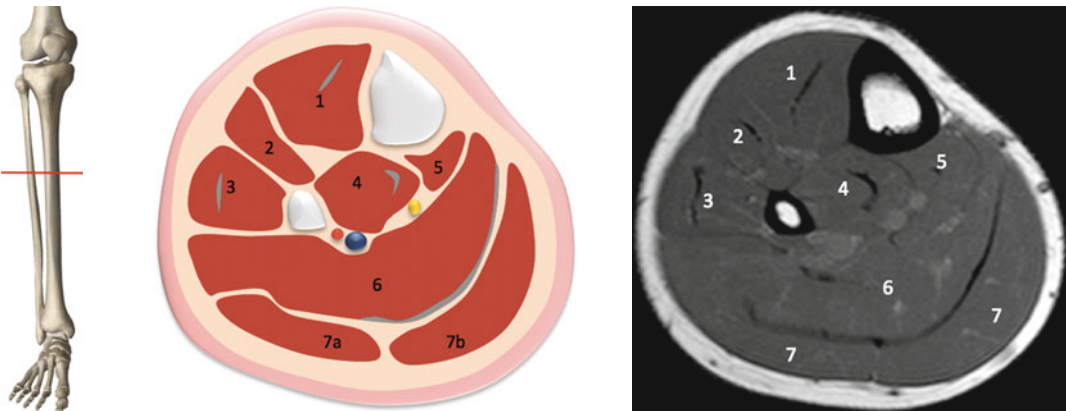
**Fig. 19.4** 1 tibialis anterior; 2 extensor digitorum and hallucis; 3 peroneus longus; 4 tibialis posterior; 5 popliteus; 6 soleus; 7 gastrocnemius lateralis (a) and medialis (b)



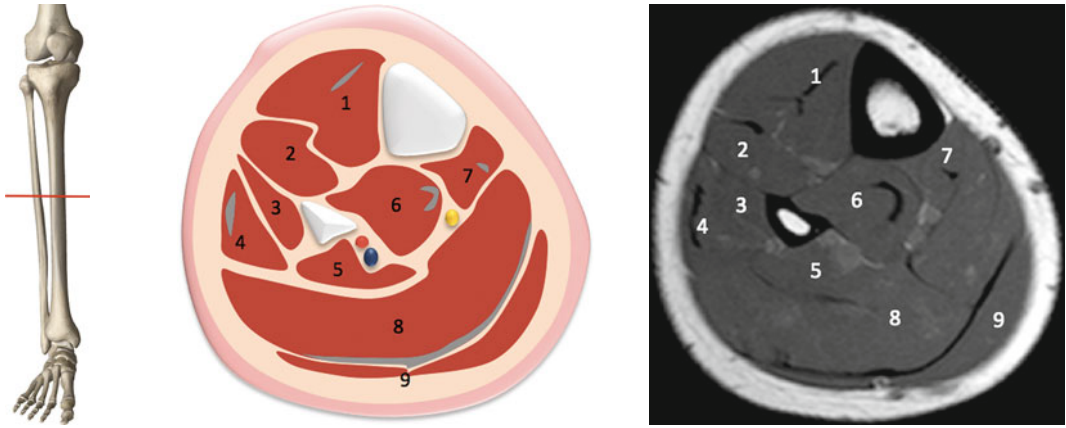
**Fig. 19.5** 1 tibialis anterior; 2 extensor digitorum and hallucis; 3 peroneus longus; 4 tibialis posterior; 5 soleus; 6 gastrocnemius lateralis (a) and medialis (b)



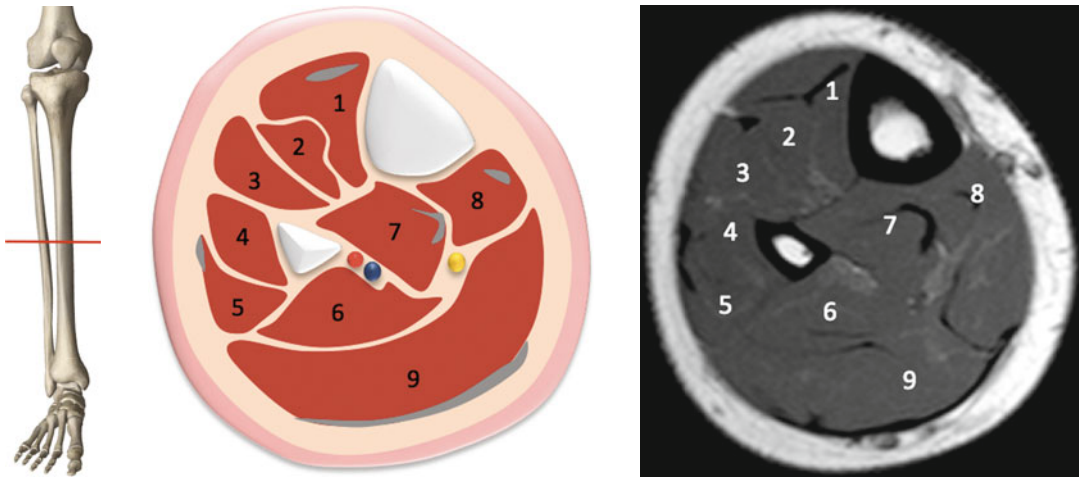
**Fig. 19.6** 1 tibialis anterior; 2 extensor digitorum and hallucis; 3 peroneus longus; 4 tibialis posterior; 5 soleus; 6 gastrocnemius lateralis (a) and medialis (b)



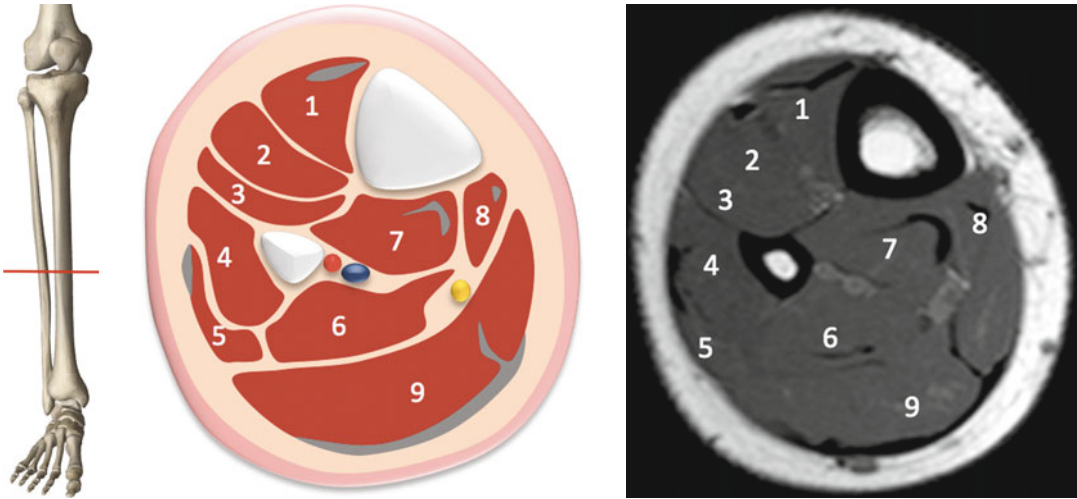
**Fig. 19.7** 1 tibialis anterior; 2 extensor digitorum and hallucis; 3 peroneus longus and brevis; 4 tibialis posterior; 5 flexor digitorum longus; 6 soleus; 7 gastrocnemius lateralis (a) and medialis (b)



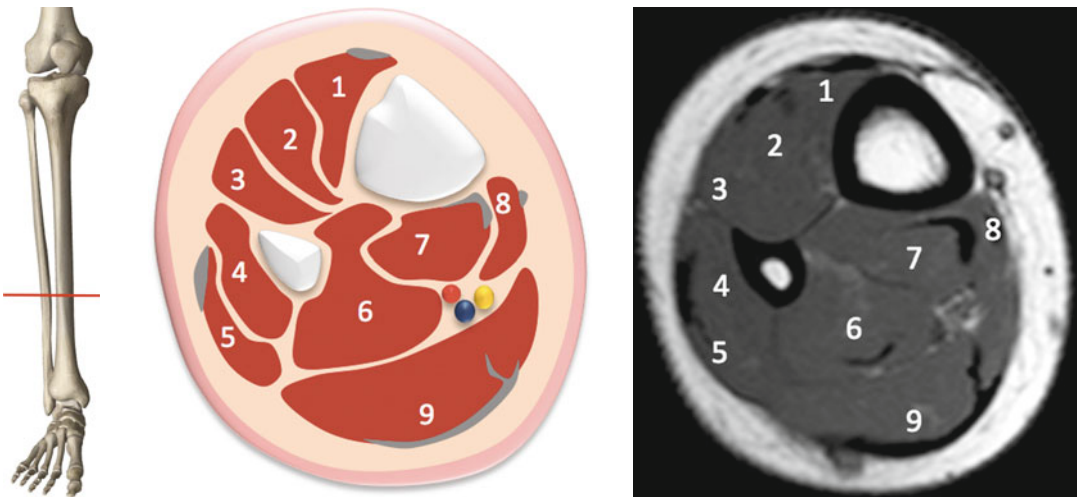
**Fig. 19.8** 1 tibialis anterior; 2 extensor hallucis; 3 peroneus longus; 4 peroneus brevis; 6 flexor digitorum longus; 7 tibialis posterior; 8 soleus; 9 gastrocnemius



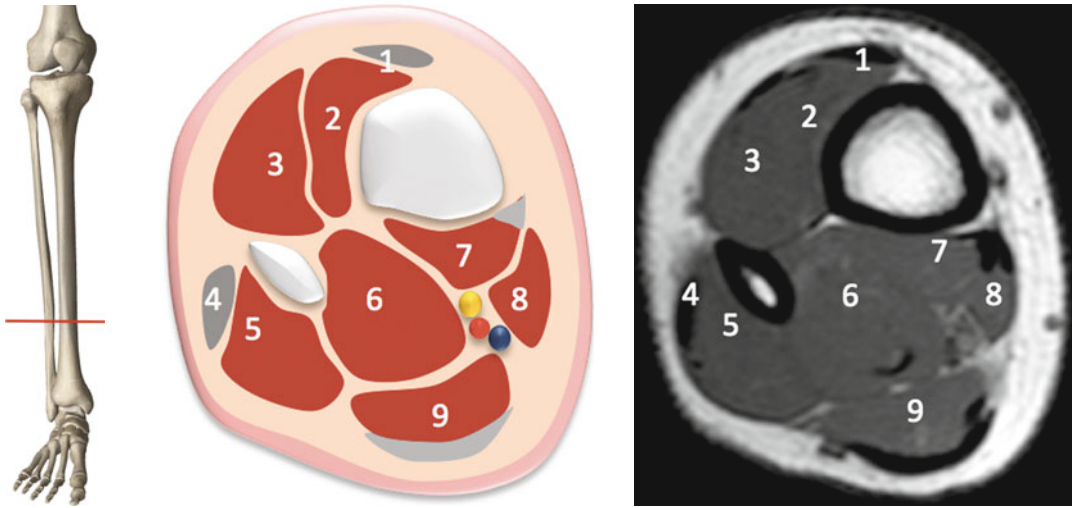
**Fig. 19.9** 1 tibialis anterior; 2 extensor hallucis; 3 extensor digitorum longus; 4 peroneus longus; 5 peroneus brevis; 6 flexor hallucis longus; 7 tibialis posterior; 8 flexor digitorum longus; 9 soleus



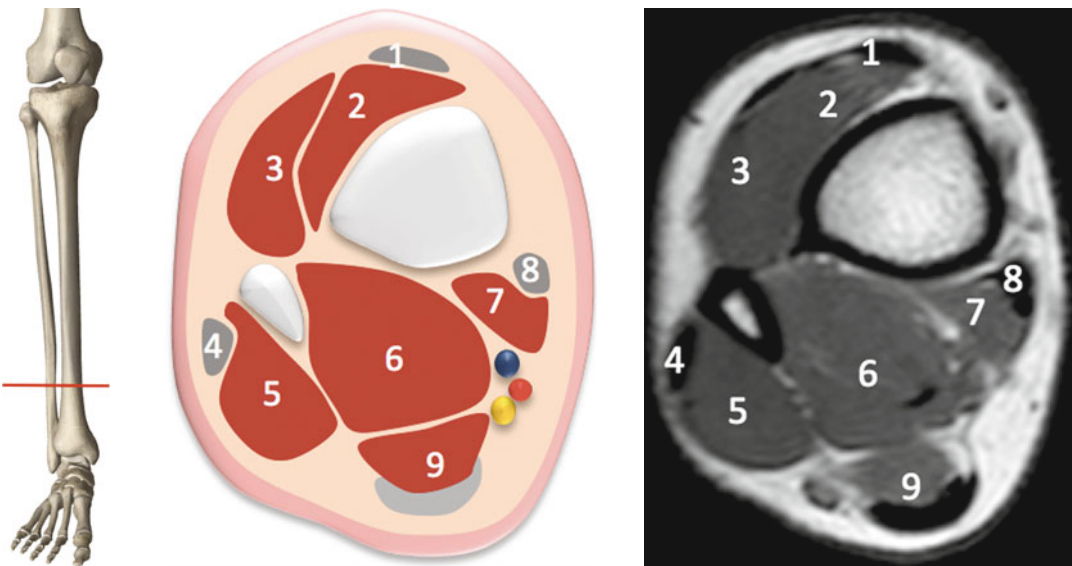
**Fig. 19.10** 1 tibialis anterior; 2 extensor hallucis; 3 extensor digitorum longus; 4 peroneus longus; 5 peroneus brevis; 6 flexor hallucis longus; 7 tibialis posterior; 8 flexor digitorum longus; 9 soleus



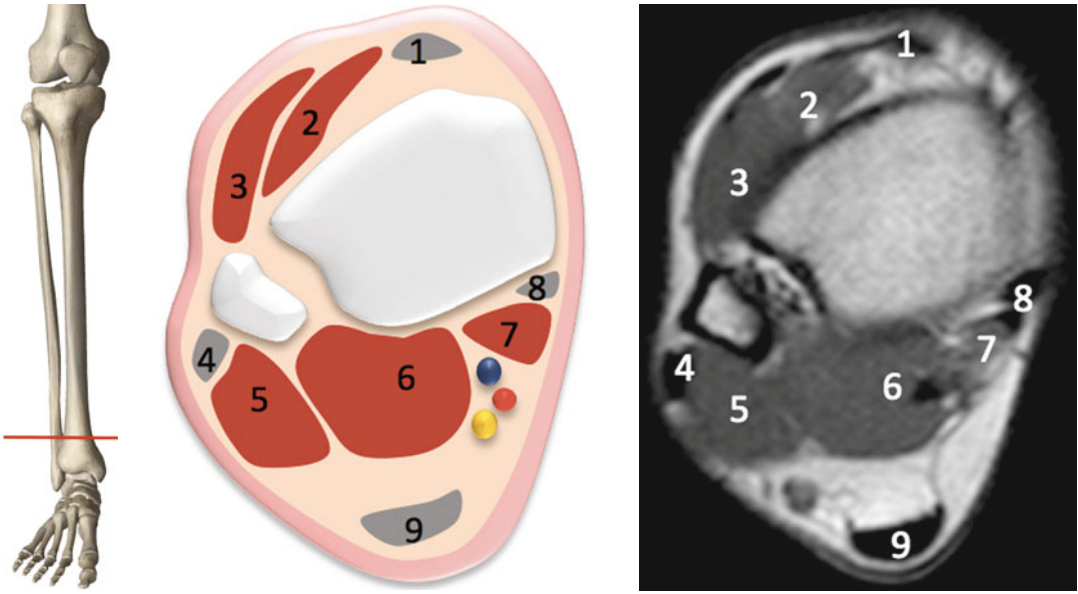
**Fig. 19.11** 1 tibialis anterior; 2 extensor hallucis; 3 extensor digitorum longus; 4 peroneus longus; 5 peroneus brevis; 6 flexor hallucis longus; 7 tibialis posterior; 8 flexor digitorum longus; 9 soleus



**Fig. 19.12** 1 tibialis anterior tendon; 2 extensor hallucis; 3 extensor digitorum longus; 4 peroneus longus tendon; 5 peroneus brevis; 6 flexor hallucis longus; 7 tibialis posterior; 8 flexor digitorum longus; 9 Achilles tendon and soleus



**Fig. 19.13** 1 tibialis anterior tendon; 2 extensor hallucis; 3 extensor digitorum longus; 4 peroneus longus tendon; 5 peroneus brevis; 6 flexor hallucis longus; 7 flexor digitorum longus; 8 tibialis posterior tendon; 9 Achilles tendon and soleus



**Fig. 19.14** 1 tibialis anterior tendon; 2 extensor hallucis; 3 extensor digitorum longus; 4 peroneus longus tendon; 5 peroneus brevis; 6 flexor hallucis longus; 7 flexor digitorum longus; 8 tibialis posterior tendon; 9 Achilles tendon