

Sacroiliitis

- A 28-year-old patient
- Familial history of SpA
- Low back pain that worsens when sitting for a long time
- Buttock pain

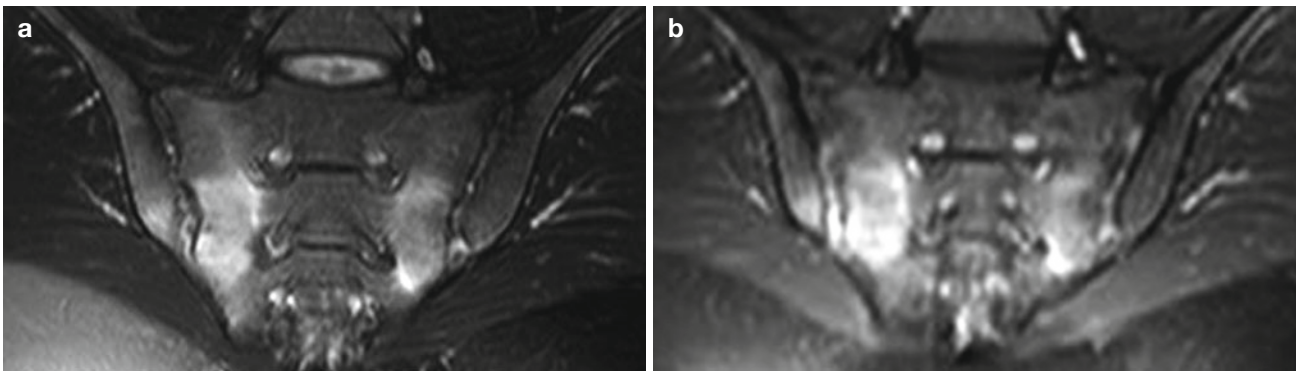


Fig. 1 Coronal TSE T2-weighted sequence with fat saturation (a), coronal SE T1-weighted image with fat saturation following the administration of contrast medium (b). Note the massive bone marrow edema and intra-articular fluid (intra-

articular hyperintensity) (a); contrast medium administration demonstrates symmetric massive acute inflammation of both joints (osteitis), in particular on the sacral side, and intra-articular enhancement (synovitis) (b)

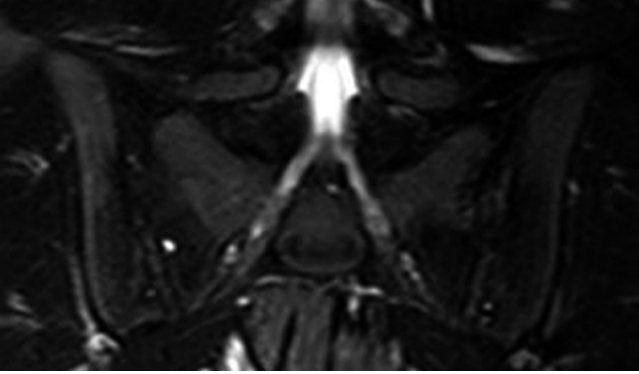
Follow-up after 13 months of TNF-blocker therapy

Fig. 2 Coronal TSE T2-weighted image with fat saturation showing resolution of the inflammatory signs of both joints (absence of bone marrow edema)