

Sacroiliitis

- A 25-year-old patient
- Presence of HLA-B27
- Psoriasis
- Low back pain that worsens when sitting for a long time
- Buttock pain

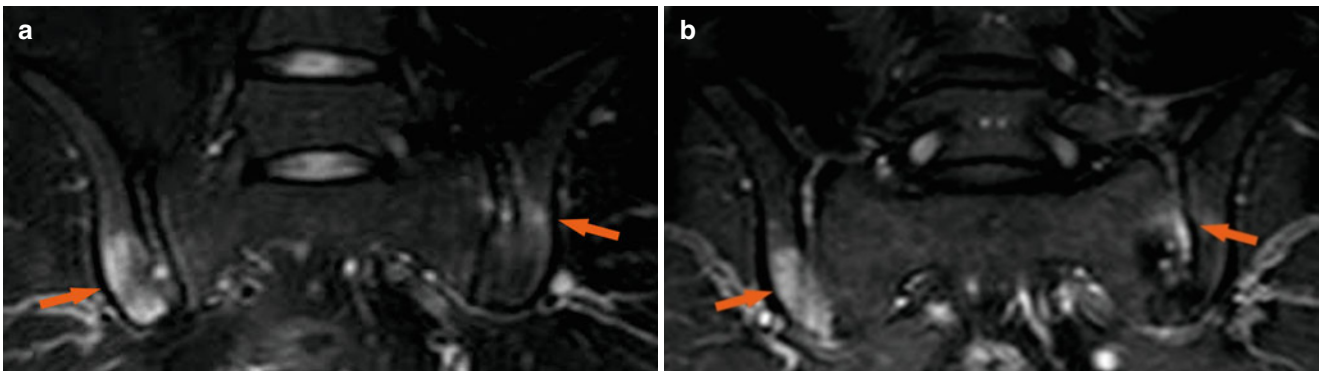


Fig. 1 Coronal TSE T2-weighted image with fat saturation (**a**) and SE T1-weighted image with fat saturation following the administration of contrast medium (**b**). These images demonstrate bone marrow edema of the sacroiliac joints,

more evident on the right side (**a**, *arrows*). Contrast medium administration shows osteitis of the right joint, in particular on the iliac side, and shows bilateral synovitis (**b**, *arrows*)

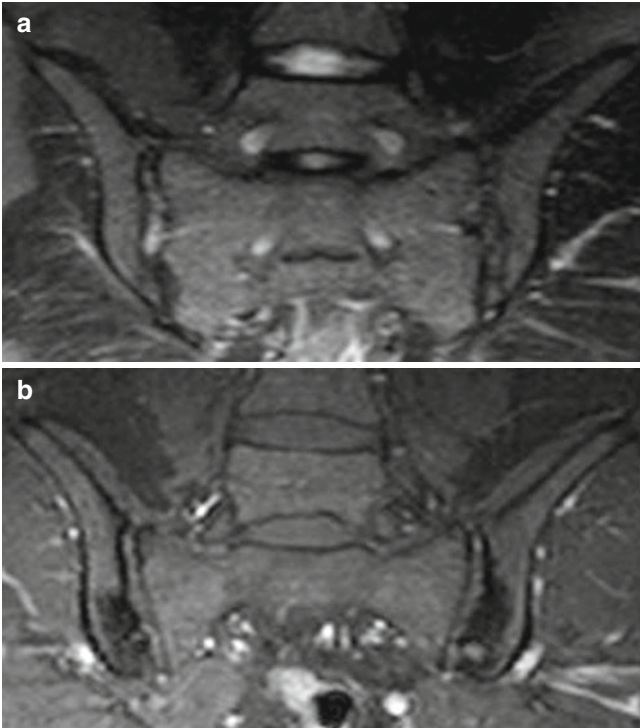
Follow-up after 9 months of TNF-blocker therapy

Fig. 2 Coronal TSE T2-weighted image with fat saturation (**a**) and SE T1-weighted image with fat saturation following the administration of contrast medium (**b**). The images show the absence of inflammatory lesions of the sacroiliac joints