

---

# Evolutionarily Conserved, Multitasking TRP Channels: Lessons from Worms and Flies

Kartik Venkatachalam, Junjie Luo, and Craig Montell

## Contents

1	Introduction .....	938
2	Sensory Transduction .....	940
2.1	Light Sensation .....	940
2.2	Chemical Senses .....	943
2.3	Thermal Sensation .....	944
2.4	Mechanosensation .....	948
2.5	Complex Behaviors .....	950
2.6	Sperm and Fertilization .....	952
2.7	Metabolism .....	952
	References .....	955

---

## Abstract

The Transient Receptor Potential (TRP) channel family is comprised of a large group of cation-permeable channels, which display an extraordinary diversity of roles in sensory signaling. TRPs allow animals to detect chemicals, mechanical force, light, and changes in temperature. Consequently, these channels control a

---

K. Venkatachalam (✉)

Department of Integrative Biology and Pharmacology, University of Texas School of Medicine, Houston, TX 77030, USA

e-mail: [kartik.venkatachalam@uth.tmc.edu](mailto:kartik.venkatachalam@uth.tmc.edu)

J. Luo

Department of Biological Chemistry, The Johns Hopkins University School of Medicine, Baltimore, MD 21205, USA

Department of Molecular, Cellular, and Developmental Biology, Neuroscience Research Institute, University of California at Santa Barbara, Santa Barbara, CA 93106, USA

C. Montell (✉)

Department of Molecular, Cellular, and Developmental Biology, Neuroscience Research Institute, University of California at Santa Barbara, Santa Barbara, CA 93106, USA

e-mail: [craig.montell@lifesci.ucsb.edu](mailto:craig.montell@lifesci.ucsb.edu)

plethora of animal behaviors. Moreover, their functions are not limited to the classical senses, as they are cellular sensors, which are critical for ionic homeostasis and metabolism. Two genetically tractable invertebrate model organisms, *Caenorhabditis elegans* and *Drosophila melanogaster*, have led the way in revealing a wide array of sensory roles and behaviors that depend on TRP channels. Two overriding themes have emerged from these studies. First, TRPs are multitasking proteins, and second, many functions and modes of activation of these channels are evolutionarily conserved, including some that were formerly thought to be unique to invertebrates, such as phototransduction. Thus, worms and flies offer the potential to decipher roles for mammalian TRPs, which would otherwise not be suspected.

---

**Keywords**

*Drosophila* TRP channels • Sensory transduction • Invertebrate TRP channels • Vision • Chemosensation • Thermosensation • Nociception • Mechanosensation • Courtship • Disease models

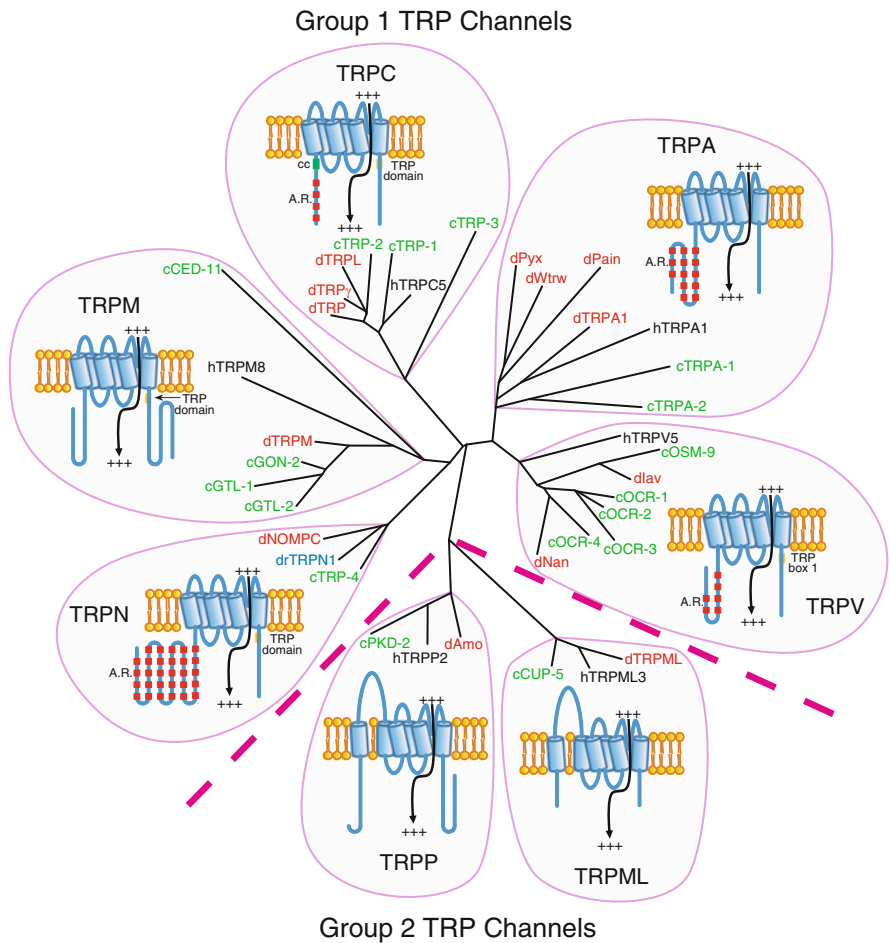
---

## 1 Introduction

TRP channels include six transmembrane segments and are subdivided into seven subfamilies on the basis of amino acid homology (Fig. 1) (Venkatachalam and Montell 2007). The channels that are the most homologous to the original TRP protein (Montell and Rubin 1989), which functions in *Drosophila* phototransduction, belong to the TRPC subfamily. The TRPCs as well as four other subfamilies (TRPV, TRPM, TRPA, and TRPN) constitute the “group 1 TRPs” (Fig. 1) (Montell 2005). Two other subfamilies (TRPP and TRPML) that are relatively similar to each other in sequence, but are more distantly related group 1 TRPs, are referred to as “group 2 TRPs.”

Due to the broad roles of TRPs in sensory signaling, they are critically important in allowing animals to sense a changing environment. As such, it is not surprising that these channels are ancient, evolutionarily conserved proteins that function in a wide range of metazoan organisms. These include invertebrates, such as worms (Kahn-Kirby and Bargmann 2006; Xiao and Xu 2009), arachnids (e.g., ticks), insects (e.g., flies, mosquitoes and bees) (Matsuura et al. 2009; Wolstenholme et al. 2011), and vertebrates such as zebrafish, mice, and humans (Venkatachalam and Montell 2007; Wu et al. 2010). However, the range of TRP channels in some ancient organisms, such as protozoa, is limited to group 2 TRPs (Dong et al. 2010; Wolstenholme et al. 2011).

In invertebrates, the functions of TRP channels have been studied most extensively in two genetically tractable model organisms—the fruit fly, *Drosophila melanogaster* (Fowler and Montell 2013), and the roundworm, *C. elegans* (Xiao and Xu 2011). All seven subfamilies are represented in flies and worms, although



**Fig. 1** Phylogenetic tree and cartoons of TRP channels from *C. elegans* (c; green), *Drosophila melanogaster* (d; red), and *Homo sapiens* (h; black). The TRPN channel from *Danio rerio* (dr; zebrafish; blue) is also included. To generate the tree, we used the predicted transmembrane segments of each TRP channel (<http://www.cbs.dtu.dk/services/TMHMM/>) in combination with the following online program: <http://www.genome.jp/tools/clusterw/>. Indicated on the TRP cartoons are ankyrin repeats (A.R.), coiled coil domains (cc), and the TRP domains, which include TRP boxes 1 and 2 (Montell 2001, 2005). TRPV proteins include only TRP box 1, rather than the full TRP domain. The N- and C-termini are the left and right ends of the TRP structures. The TRP termini are situated on the cytoplasmic side of the lipid bilayer

these organisms have fewer TRP channels than humans. Nevertheless, the TRPA subfamily is the largest in insects, even though only one representative exists in mice and humans. This notable difference might reflect a particularly important role for TRPA channels in sensing environmental chemicals and changes in

temperature, since poikilothermic animals such as insects are particularly sensitive to heat and cold and are subjected to a very complex repertoire of compounds in their surroundings.

Characterization of TRPs in worms and flies underscore the theme that individual TRP channels do not respond to one type of sensory stimuli. Rather, a single TRP channel is capable of sensing a surprisingly broad range of sensory input. In this regard, *Drosophila* TRPA1 is a particularly notable polymodal sensor, as it functions in the avoidance of noxious volatile and nonvolatile chemicals, intense light, excessively warm temperatures, and small temperature differences in the comfortable range.

---

## 2 Sensory Transduction

The peripheral nervous system in *Drosophila* is composed of four general types of sensory elements. These include (1) external sense organs, such as chemosensory and mechanosensory bristles (sensilla); (2) chordotonal organs, which serve in part as stretch receptors; (3) multidendritic neurons; and (4) photoreceptor cells. *C. elegans* senses the external world through sensillar organs and a variety of isolated sensory neurons.

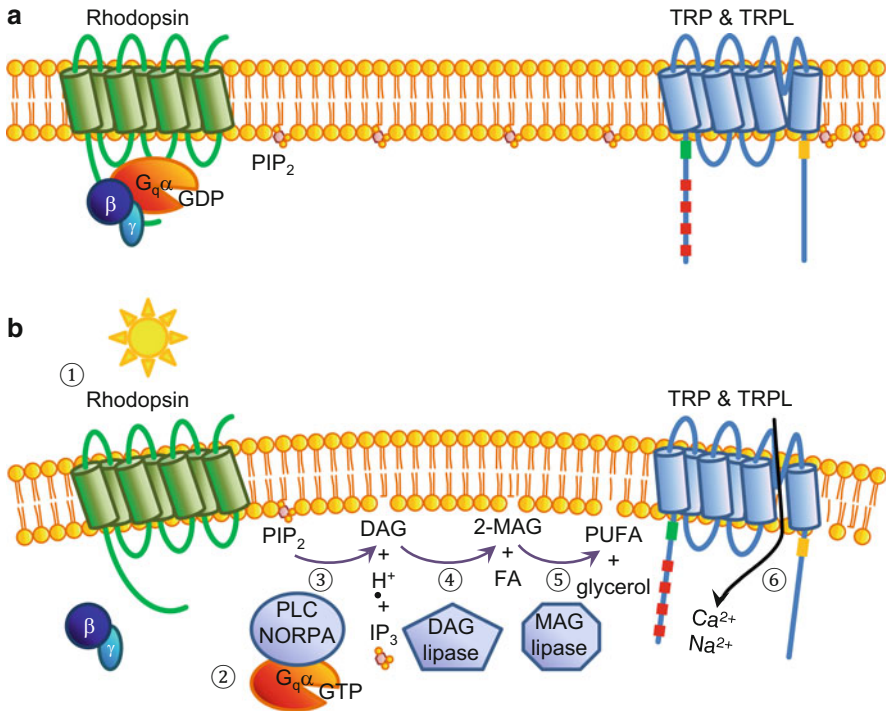
### 2.1 Light Sensation

#### 2.1.1 Role of TRPs in Image Formation in *Drosophila*

In 1969, Cosens and Manning described a *Drosophila* mutant characterized by a loss of a sustained light response (Cosens and Manning 1969). Using a simple field recording, the electroretinogram (ERG), the flies displayed only a transient response to light. The basis for the *transient receptor potential* (*trp*) phenotype was enigmatic, despite a series of studies over the next two decades (Montell 2011). The first indication as to the function of TRP emerged from the cloning of the *trp* gene, and the observation that the TRP protein had a predicted transmembrane topology similar to the limited number of ion channels and transporters known at the time (Montell and Rubin 1989). A subsequent report demonstrated that loss of *trp* resulted in the rapid decrease the light-activated  $\text{Ca}^{2+}$  conductance (Hardie and Minke 1992). Together, these findings supported the model that *trp* encodes a  $\text{Ca}^{2+}$  permeable channel.

In vitro biophysical analyses of TRP, and a related channel identified in 1992 (TRP-Like; TRPL) (Harteneck et al. 1995; Hu et al. 1994; Phillips et al. 1992; Vaca et al. 1994; Xu et al. 1997), indicated that both TRP and TRPL were cation channels. Direct in vivo evidence demonstrating that TRP is a  $\text{Ca}^{2+}$  permeable channel was obtained by manipulation of the selectivity filter, resulting in a dramatic decrease in the light-induced  $\text{Ca}^{2+}$  conductance (Liu et al. 2007a).

TRP and TRPL are activated via a signaling pathway that couples light stimulation of rhodopsin with a heterotrimeric G protein (Gq) that engages a phospholipase



**Fig. 2** Model for activation of *Drosophila* TRP and TRPL. (a) The fly phototransduction cascade is not active, and the TRP and TRPL channels are closed in photoreceptor cells maintained in the dark. (b) The light-activated phototransduction cascade. (1) Light activation of rhodopsin. (2) GTP is exchanged for GDP on the  $G_q\alpha$  subunit ( $G_q\alpha$ ; also known as  $G\alpha 49B$ ) and the  $\beta\gamma$  subunit dissociates from the  $\alpha$  subunit. (3) Activation of PLC (phospholipase C $\beta$ ) catalyzes the hydrolysis of  $PIP_2$  (phosphoinositide-4,5-bisphosphate ( $PIP_2$ )) into DAG (diacylglycerol),  $IP_3$  (inositol-1,4,5-trisphosphate), and  $H^+$  (proton). (4) The major products of the DAG lipase (encoded by the *inaE* locus) are 2-MAG (2-monoacylglycerol) and a saturated FA (fatty acid). Not shown are the minor products: 1-MAG and a polyunsaturated FA (PUFA). (5) Activity of an unknown MAG lipase catalyzes the production of a PUFA and glycerol. (6) TRP and TRPL are activated, leading to influx of  $Ca^{2+}$  and  $Na^+$ . The cleavage of  $PIP_2$  (step 3) is proposed to contribute to activation of TRP and TRPL through a change in curvature of the plasma membrane, thereby creating mechanical force

C $\beta$  (PLC $\beta$ ) encoded by the *norPA* locus (Bloomquist et al. 1988; Inoue et al. 1985) (Fig. 2). PLC $\beta$  catalyzes the hydrolysis of phosphoinositide-4,5-bisphosphate ( $PIP_2$ ) into inositol-1,4,5-trisphosphate ( $IP_3$ ), diacylglycerol (DAG), and a proton ( $H^+$ ) (Huang et al. 2010). The enzymatic activity of NORPA is required for gating of TRP and TRPL since replacement of a single residue that is critical for phospholipase C activity eliminates the light response (Wang et al. 2008).

The activation mechanism of TRP and TRPL has been scrutinized extensively and is still not fully resolved. Nevertheless, it is clear that neither  $IP_3$  nor the  $IP_3$ -

receptor is important for channel activation (Acharya et al. 1997; Raghu et al. 2000). According to one model, TRP and TRPL are activated by polyunsaturated fatty acids (PUFAs) such as arachidonic acid and linoleic acid, which are derived from metabolism of DAG (Chyb et al. 1999). Another proposal is that a decline in PIP<sub>2</sub>, which is inhibitory, and a decrease in pH, due to the production of H<sup>+</sup>, are the two signals necessary for channel activation (Huang et al. 2010).

The question then arises as to why PIP<sub>2</sub> depletion leads to channel activation. A provocative concept is that light stimulation activates TRP and TRPL through mechanical gating (Hardie and Franze 2012) (Fig. 2b). PIP<sub>2</sub> hydrolysis appears to cause minute mechanical contractions of the photoreceptor cell membrane due to removal of the bulky head group of the PIP<sub>2</sub>, and these membrane contractions may activate the TRP/TRPL channels (Hardie and Franze 2012). In further support of the concept that TRP and TRPL are mechanically gated, incorporation of a mechanically activated monovalent cation channel (gramicidin) into the membranes of photoreceptor cells dissociated from the *trpl;trp* double mutant is sufficient to induce a light conductance (Hardie and Franze 2012).

The mechanisms of phototransduction in the *Drosophila* photoreceptors are in stark contrast to those occurring in vertebrate rods and cones. Whereas *Drosophila* phototransduction involves depolarization of the photoreceptors, light hyperpolarizes vertebrate rods and cones (Fu and Yau 2007). On the other hand, the intrinsically photosensitive retinal ganglion cells (ipRGCs) in the mammalian retina, which participate in circadian entrainment and the pupillary light response (Berson et al. 2002; Provencio et al. 2000; Schmidt et al. 2011), use a phototransduction cascade that employs TRPC6 and TRPC7 and bears a striking resemblance to the *Drosophila* phototransduction cascade (Xue et al. 2011).

### 2.1.2 Non-image Light Sensing in Worms and Flies

*Drosophila* larvae also sense light and do so through two types of phototransduction cascades, both of which depend on TRP channels. However, in contrast to the adult visual system, which functions in image detection, larval phototransduction participates in phototaxis only. The two discrete larval phototransduction cascades take place in separate body parts and are activated by different light intensities. Low to moderate light is received by the Bolwig's organ, which appears to use a cascade that is initiated by rhodopsin and culminates with activation of the TRP and TRPL channels, since these signaling proteins are expressed in this tissue (Petersen and Stowers 2011; Sprecher and Desplan 2008).

Intense bright light is detected by class IV multidendritic sensory neurons that tile the *Drosophila* larval body wall (Xiang et al. 2010). This light avoidance requires TRPA1, but remarkably, it appears to be independent of rhodopsin, PLC, and the flavin-based light sensor, cryptochrome (Xiang et al. 2010). Rather, the photoresponse of the class IV neurons requires a member of the gustatory receptor family (GR28b) (Xiang et al. 2010), which is the *Drosophila* homolog of LITE-1—a protein that functions in light detection in *C. elegans* (Liu et al. 2010; Ward et al. 2008). Whether *Gr28b* homozygous mutant flies have a defect in light avoidance behavior has not been reported. Other open questions are whether

GR28b binds a chromophore, the spectral sensitivity of this light receptor, and how activity of GR28b is coupled to TRPA1. One possibility is that GR28b engages a heterotrimeric G protein. However, at least some members of the insect GR family have a topology opposite to classical G protein-coupled receptors (Zhang et al. 2011).

## 2.2 Chemical Senses

Volatile chemicals are detected through the sense of smell, while nonvolatile chemicals are sensed through contact chemosensation, which includes the sense of taste.

### 2.2.1 Odor and CO<sub>2</sub> Detection (Non-contact Chemosensation)

The first TRP channel shown to have a role in invertebrate chemosensation is OSM-9. This TRPV protein couples to an odorant receptor, ODR-10, and plays a regulatory role in *C. elegans* olfaction (Colbert et al. 1997). The *osm-9* mutants are defective in chemotaxis towards a subset of olfactory cues that are mediated by the AWA neurons. These mutants also exhibit reduced avoidance to benzaldehyde, which depends on ASH neurons, and display diminished olfactory adaptation to some odorants detected by AWC neurons (Colbert et al. 1997).

*Drosophila* use two primary organs to sense volatile chemical, the third antennal segment and the maxillary palp (Vosshall and Stocker 2007). The olfactory receptor neurons (ORNs) that extend from these organs terminate in the antennal lobe, which send projection neurons into higher brain centers (Vosshall and Stocker 2007). The two main classes of channels that are critical for *Drosophila* olfaction are seven-transmembrane ionotropic receptors, referred to “olfactory receptors” (ORs) (Clyne et al. 1999; Gao and Chess 1999; Robertson et al. 2003; Vosshall et al. 1999), and ionotropic receptors (IRs) (Benton et al. 2009), which are distantly related to glutamate receptors. Several *Drosophila* TRP channels also participate in olfaction, although they are not the primary olfactory detectors. For instance, the classical TRP plays a role in olfactory adaptation (Störtkuhl et al. 1999). In addition, TRPA1 is expressed in ORNs and is required for avoiding the naturally occurring insect repellent, citronellal (Kwon et al. 2010a). Fly TRPA1 is not effectively activated by citronellal directly. Rather, it is activated through a Gq and PLC (NORPA)-dependent signaling cascade. However, the TRPA1 expressed by the mosquito, *Anopheles gambiae*, which is an insect vector that spreads malaria, is directly and potently activated by citronellal (Kwon et al. 2010a). Both TRP and TRPL are co-expressed in CO<sub>2</sub>-sensitive olfactory receptor neurons (ORNs) in the antennae and contribute to CO<sub>2</sub> avoidance, possibly through a Gq/PLC signaling cascade (Badsha et al. 2012). Another TRPA channel, Painless (Tracey et al. 2003), functions in projection neurons emanating from the olfactory glomeruli, where it participates in an olfactory circuit that inhibits male-male courtship (Wang et al. 2011).

### 2.2.2 Taste (Contact Chemosensation)

The sense of taste in flies is mediated through gustatory receptor neurons (GRNs) housed in hairlike projections referred to as sensilla. Gustatory sensilla are distributed on multiple body parts, including the main gustatory organ (labellum), the legs, wing margins, and ovipositor. Taste in flies depends predominately on a large family of gustatory receptors (GRs), which are related to ORs, and at least one IR (Montell 2009; Zhang et al. 2013b). This is in contrast to mammalian taste, which is mediated largely through a TRP channel (Pérez et al. 2002; Zhang et al. 2003). Nevertheless, at least three TRP channels participate in *Drosophila* taste sensation (TRPA1, Painless, and TRPL) as described below.

TRPA1 is expressed in the main taste organ, the labellum, and is critical for sensing the naturally occurring plant compound, aristolochic acid (Kim et al. 2010). Activation of TRPA1 through this chemical depends on the same Gq and PLC that is required for phototransduction in the compound eye and for activating TRPA1 in ORNs. TRPA1 is also expressed in internal mouthparts where it is employed to detect a subset of aversive chemicals prior to ingestion (Kang et al. 2010a). As with mammalian TRPA1, *Drosophila* TRPA1 is a receptor for electrophilic chemicals, such as allyl isothiocyanate (AITC) (Bandell et al. 2004; Hinman et al. 2006; Jordt et al. 2004; Kang et al. 2010a; Macpherson et al. 2007). Avoidance of AITC—the pungent ingredient of wasabi—also appears to depend on Painless (Al-Anzi et al. 2009). However, whether Painless is required in GRNs or postsynaptic to these afferent neurons is unclear. In *C. elegans*, the TRPV channel, OSM-9, mediates avoidance behavior towards the bitter chemical quinine (Hilliard et al. 2004).

The TRPL channel functions in diet-induced changes in taste preference through a mechanism that employs reversible changes in GRNs (Zhang et al. 2013c). Animals including flies tend to avoid some unpalatable compounds, if more appealing options are available in the diet. Indeed, flies will reject the bitter tasting compound, camphor. However, after long-term exposure to camphor, the animals reduce their distaste to this food ingredient. TRPL is expressed in GRNs that mediate an avoidance response and is directly activated by camphor. Persistent exposure to TRPL causes ubiquitination and downregulation of TRPL, thereby diminishing camphor rejection (Zhang et al. 2013c). If camphor is removed from the diet for a long time, the concentration of TRPL gradually increases, thereby restoring the original aversion to this food additive. Thus, the reversible changes in TRPL levels provide a mechanism whereby an animal can change their food preferences as a result of long-term alterations in the diet.

## 2.3 Thermal Sensation

Animals avoid noxious heat and cold for survival and seek out the ideal temperature zone to maximize comfort. Responding to small differences in temperature is especially important for poikilothermic organisms, since their body temperature equilibrates with the environment. Consequently, in invertebrate animals, changes



in temperature affect the rate of growth and development, and aging. In addition, since it is warmer during the day than at night, daily temperature fluctuations can set circadian rhythms. Seminal work on mammalian somatosensation established that channels such as TRPV1 are thermal sensors and can be directly activated by changes in temperature (Caterina et al. 1999; Dhaka et al. 2006). We now know that roles for TRPs as thermosensors are evolutionarily conserved, and invertebrate thermoTRPs sense changes in temperature for multiple purposes, beyond the avoidance of noxious heat and cold.

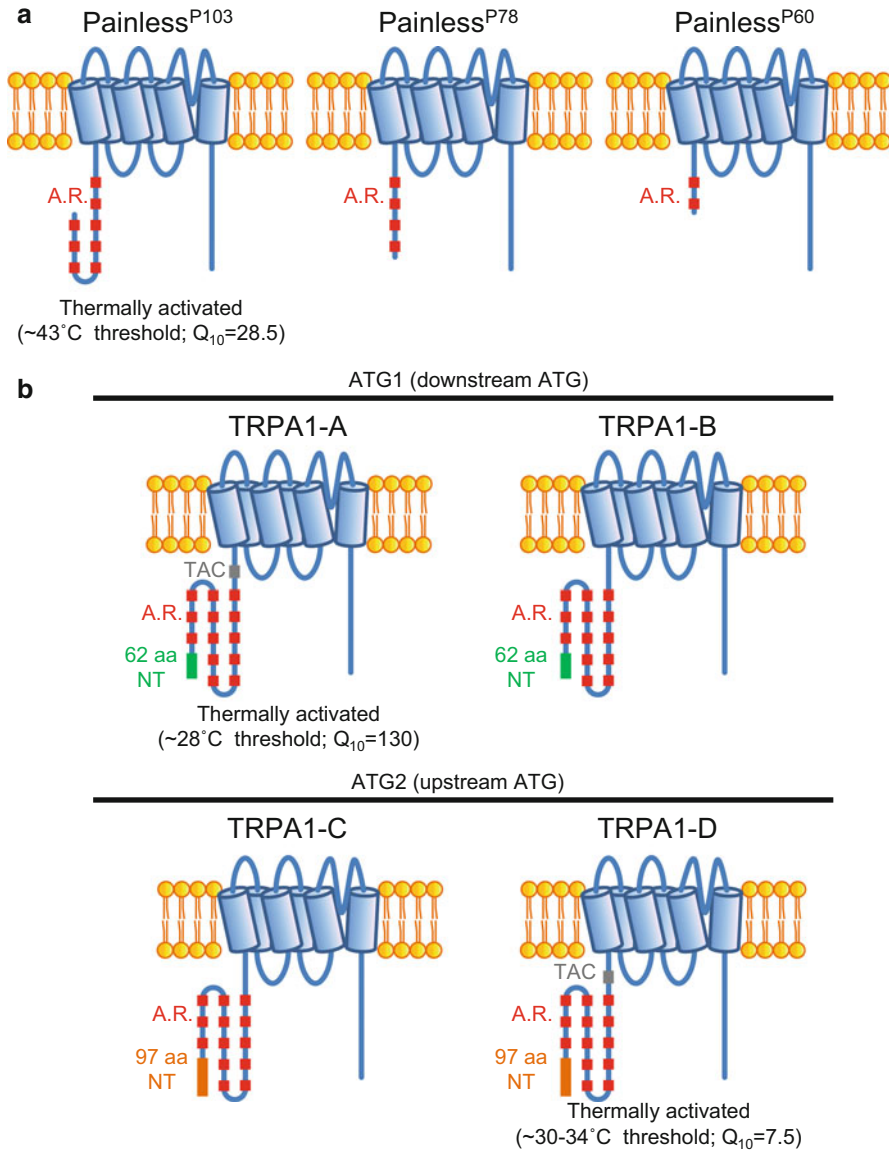
### 2.3.1 Nociception

#### 2.3.1.1 Responding to Warm and Hot Temperatures

Three channels, all within the TRPA subfamily, contribute to nociceptive responses of *Drosophila* larvae to excessive heat. Normally, wild-type larvae move along a surface parallel to their body axis. However, if they are exposed to a heat probe with a threshold around 40 °C, they quickly roll in a corkscrew fashion around their body axis. This writhing response depends on Painless expression in multidendritic neurons in the body wall (Tracey et al. 2003). There are three Painless isoforms, one of which includes a long N-terminus with eight ankyrin repeats (Painless<sup>P103</sup>) and another with a very short N-terminus (Painless<sup>P60</sup>) (Fig. 3a). Expression of Painless<sup>P103</sup> rescues the *pain* mutant phenotype, but not Painless<sup>P60</sup> (Hwang et al. 2012). Painless<sup>P103</sup> appears to be a direct thermosensor, as it is activated with a threshold ( $\geq 42$  °C) (Sokabe et al. 2008) similar to that needed to initiate the rolling response (Tracey et al. 2003).

Another TRPA channel, Pyrexia, is activated directly by warm temperatures ( $\geq 40$  °C) and enable larvae to manage the thermal stress of relatively high temperatures (Lee et al. 2005). In the absence of Pyrexia, the larvae are paralyzed by exposure to 40 °C for several minutes (Lee et al. 2005).

TRPA1 participates in the response to high temperatures in both larvae and adult flies (Neely et al. 2011). The channel is activated with a threshold of ~25–29 °C (Viswanath et al. 2003) and is used as a sensor in larvae and adults to avoid temperature above this threshold, which are uncomfortable but not acutely dangerous (Hamada et al. 2008; Kwon et al. 2008; Rosenzweig et al. 2005). In adults, TRPA1-mediated temperature sensation in this range ( $\geq 25$  °C) is detected by sensory neurons in the brain (anterior cell neurons) (Hamada et al. 2008). There are four TRPA1 isoforms (Kwon et al. 2010a; Zhong et al. 2012), two of which include a 37 amino acid domain between the N-terminal 13 ankyrin repeat and the transmembrane segments (Fig. 3b). These two isoforms, TRPA1-A and TRPA1-D, are directly activated by increases in temperature, and the 37 amino acid “TRP ankyrin cap” (TAC) domain appears to be essential for thermal activation (Kang et al. 2012; Zhong et al. 2012) (note that the TRPA1-A and TRPA1-D isoforms are referred to as TRPA1-B and TRPA1-A, respectively, in one study) (Kang et al. 2012). The TRPA1-A isoform is remarkably sensitive to temperature activation, as it has a  $Q_{10}$  of ~130 (Kang et al. 2012). TRPA1-C does not appear to be a direct thermosensor. Yet, expression of this isoform also rescues the *trpA1*



**Fig. 3** Protein isoforms of Painless and *Drosophila* TRPA1. (a) Painless. (b) TRPA1. A.R. ankyrin repeats, NT N-terminal domain, TAC TRP ankyrin cap domain

nociceptive phenotype (Zhong et al. 2012). These findings indicate that there are both direct and indirect mechanisms for thermal activation of TRPA1 (see below).

The mosquito vector for malaria, *Anopheles gambiae*, expresses a TRPA1 homolog in small coeloconic sensilla in the antenna, which is heat activated ( $\geq 25$  °C) (Wang et al. 2009). These sensilla house thermosensitive neurons that

are activated as the temperature rises above ~25–40 °C. Thus, *A. gambiae* appear to use peripheral neurons in the antenna to detect warm temperatures (Wang et al. 2009).

*C. elegans* employ two parallel pathways for noxious heat avoidance ( $\geq 25$  °C). The first uses the neuropeptide receptor, NPR-1, and the second depends on the two TRPV proteins, OSM-9 and OCR-2 (Glauser et al. 2011). Whether OSM-9 and OCR-2 are heat activated is not known.

### 2.3.1.2 Responding to Excessively Cool Temperatures

Temperatures slightly below 18 °C are avoided by *Drosophila* larvae and adults. When given a choice between 18 °C and lower temperatures, the animals will migrate towards 18 °C. In larvae, this behavior depends in part on the TRPL channel (Rosenzweig et al. 2008) in chordotonal neurons (Kwon et al. 2010b), but not the TRP channel (Kwon et al. 2010b). The fly genome encodes two TRPV channels, Inactive and Nanchung, and at least one of these channels, Inactive, contributes to the avoidance of cool temperatures (Kwon et al. 2010b). Whether Nanchung also functions in this behavior is unclear due to the severe defect in locomotion, which is also associated with this mutation.

In adult flies, cool sensation is mediated via thermosensory neurons in the antenna (arista and the sacculus) and requires three proteins, referred to as Brivido1–3 (Gallio et al. 2011). These proteins contain either eight (Brv1) or ten predicted transmembrane domains (Brv2 and Brv3) (Gallio et al. 2011) and are most akin to mammalian polycystin1 proteins, which are part of the TRPP channel complex and thought to regulate the activity of the channels. The last six transmembrane segments are related to TRPP channels. Since it is not known whether the individual Brv proteins are cation channels or whether all three proteins are subunits of a cool-sensing channel, these proteins are not currently listed as TRPP proteins.

### 2.3.2 Temperature Control in the Comfortable Range

Animals including *Drosophila* are capable of discriminating small temperature differences in the comfortable range ( $\leq 1$  °C). Although temperatures from 18 to 24 °C are comfortable for *Drosophila* larvae, 18 °C is preferred, and they will select 18 °C over 19–24 °C. TRPA1 is required for fine temperature discrimination in this range (Kwon et al. 2008). However, activation of TRPA1 is indirect since the comfortable temperatures (18–24 °C) are below the threshold for direct thermal activation of the channel (24–29 °C) (Viswanath et al. 2003). Rather, TRPA1 is activated downstream of phototransduction-like signaling cascade that depends on a rhodopsin (Rh1) (Shen et al. 2011) and the same heterotrimeric G protein and PLC that function in phototransduction (Kwon et al. 2008). Although thermal discrimination in the comfortable range depends on a rhodopsin, the concentration of rhodopsin in the thermosensory neurons is extremely low, precluding efficient photon capture. Consequently, light exposure does not impact on selection of 18° over 19–24 °C. This thermosensory signaling cascade may facilitate amplification of small temperature differences in the comfortable range and allow for thermal

adaptation to 19–24 °C, if the larvae are unable to identify an area that is 18 °C within their thermal landscape.

### 2.3.3 Temperature Control of Circadian Rhythm

Circadian rhythms in most animals are entrained principally by day/night cycles (Allada and Chung 2010; Hardin 2011; Kwon et al. 2011; Peschel and Helfrich-Forster 2011; Reppert and Weaver 2002). In some poikilothermic organisms, such as *Drosophila*, circadian rhythms can also be set by higher and lower relative temperatures that simulate day/night periods (Glaser and Stanewsky 2007). TRPA1 is one molecular sensor that contributes to the temperature control of circadian rhythms in flies (Lee and Montell 2013). TRPA1 is expressed and functions in a subset of pacemaker neurons in the adult brain, and loss of this channel alters, but does not eliminate entrainment.

Recently, Pyrexia has also been reported to contribute to temperature synchronization of circadian rhythm through expression in peripheral sensory neurons in chordotonal organs (Wolfgang et al. 2013). Pyrexia affected temperature synchronization to relatively low temperatures (16–20 °C) but not at higher temperatures (21–29 °C). Since Pyrexia is activated by temperatures with a threshold near 40 °C (Lee et al. 2005), it may function in temperature control of clock synchronization via a thermosensory signaling cascade.

### 2.3.4 Temperature Control of Aging

Lower body temperature can increase animal lifespan (Conti 2008), and it was formerly assumed that this was due to a general reduction in metabolism. However, this is not the case, at least in *C. elegans*. Worm TRPA-1 is a cold-activated channel, as is mammalian TRPA1, and functions in the intestine to sense a decrease in temperature (Xiao et al. 2013). Cold activation of TRPA-1 leads to stimulation of a Ca<sup>2+</sup>-sensitive protein kinase C (PKC-2) and nuclear entry of the transcription factor DAF-16/FOXO, which promotes an increase in longevity. Given that expression of TRPA-1 in the intestine is sufficient for cold-induced longevity, this finding demonstrates that a non-excitabile tissue functions in thermosensation and lifespan extension (Xiao et al. 2013).

## 2.4 Mechanosensation

Mechanosensation contributes to gentle and noxious touch, proprioception, sensing gravity, and hearing, and invertebrate TRP channels are important for each of these functions.

### 2.4.1 Touch, Proprioception, and Gravity Sensation

In *C. elegans* several TRP channels contribute to the response induced by nose touch. These include TRPA-1, which is activated in vitro by applying negative pressure to cells (Kindt et al. 2007), and both TRPV proteins, OSM-9 and OCR-2 (Colbert et al. 1997; Tobin et al. 2002). Since OSM-9 and OCR-2 are required for

sensing volatile and nonvolatile compounds, mechanosensation, as well as osmosensation, they are polymodal sensors (Colbert et al. 1997; Tobin et al. 2002). The diversity of roles for these two proteins may reflect their expression in several types of sensory neurons. The two proteins may be subunits of a single channel since they form a complex and mutually affect the spatial distribution of the other protein (Tobin et al. 2002). However, it is not known if TRPA-1, OSM-9, or OCR-2 is responding directly or indirectly to mechanical stimulation.

*Drosophila* larvae depend on the TRPA channel, Painless, for responding to noxious touch, and this function is mediated through the same nociceptors that sense noxious heat (Tracey et al. 2003). A role for Painless in mechanosensation extends to the *Drosophila* heart (Senatore et al. 2010). Painless is expressed in the heart where it senses mechanical stress, which in turn regulates heart activity (Senatore et al. 2010). Painless, as well as a second TRPA channel, Pyrexia, and two TRPV channels, Inactive and Nanchung, are also expressed in the Johnston's organ of the second antennal segment, where they participate in gravity sensing (Sun et al. 2009).

An important advance in dissecting the roles of TRP channels in mechanosensation is the demonstration that the *C. elegans* TRPN protein, TRP-4, is a direct mechanosensor (Kang et al. 2010b). Unlike the other six TRP subfamilies, TRPN proteins are not expressed in mammals. However, TRPN proteins are conserved from worms to zebrafish (Sidi et al. 2003; Walker et al. 2000). One of the intriguing features of TRPN channels is the large number of N-terminal ankyrin repeats (29) in flies and worms (Walker et al. 2000), which are proposed to comprise a gating spring (Howard and Bechstedt 2004). The *Drosophila* TRPN protein, NOMPC, is necessary for touch transduction in adult flies (Walker et al. 2000) and in two of the four classes of multidendritic neurons (II and III) for light touch transduction in larvae (Tsubouchi et al. 2012; Yan et al. 2013). Fly TRPN is also required for larval locomotion and normal proprioception (Cheng et al. 2010). The *C. elegans* TRP-4 protein plays a role in proprioception (Li et al. 2006) and harsh touch (Kang et al. 2010b).

The quintessential hallmark of a mechanotransducer is very rapid activation kinetics (Christensen and Corey 2007; Sharif-Naeini et al. 2008), and the TRP-4-dependent conductance is activated *in vivo* in less than 1 ms (Kang et al. 2010b). Thus, worm TRP-4 is the first TRP shown to be a direct mechanosensor *in vivo*. Fly NOMPC also appears to be a mechanosensor, since ectopic expression of this protein in non-mechanosensitive neurons confers touch sensitivity, and this channel is activated rapidly *in vitro* by applying negative pressure (latency <2 mS) (Yan et al. 2013). Currently, it is not known if any mammalian TRP channel is a direct mechanosensor.

### 2.4.2 Hearing

In flies hearing plays critical roles in courtship and mating, in addition to the avoidance of predators (Kamikouchi 2013). The mechanotransduction that is essential for audition occurs in the Johnston's organ, which contains chordotonal sensilla (Kernan 2007). Hearing requires both the detection and amplification of

sound-evoked signaling, and at least three TRP channels (NOMPC, Iav and Nan) contribute to hearing in adult (Eberl et al. 2000; Effertz et al. 2011, 2012; Gong et al. 2004; Göpfert et al. 2006; Kamikouchi et al. 2009; Kim et al. 2003; Lehnert et al. 2013) and in larval chordotonal organs (Zhang et al. 2013a). Primary sound sensation and sound amplification appear to be distinct processes. Nan and Iav mediate the initial detection of mechanical vibrations, while NOMPC plays a role in sound amplification (Lehnert et al. 2013).

### 2.4.3 Sensing Moist and Dry Environments

Hygrosensation refers to the ability of an organism to sense moisture or humidity in the environment. In flies, hygrosensation requires a region of the antenna known as the arista (Sayeed and Benzer 1996). The mechanisms for detecting moist and dry air are distinct because the TRPA channel, Waterwitch (Wtrw), is involved in sensing the transition to moist air, whereas Nan mediates the response to dry air (Liu et al. 2007b). However, neurons expressing both channels project to the region of the fly CNS associated with mechanotransduction (Liu et al. 2007b). Thus, hygrosensation may involve humidity-dependent alterations in mechanical stretch in the hygrosensitive neurons.

*Drosophila* larvae avoid dry surfaces through nocifensive behavior that depends on class IV multidendritic neurons in the body wall, and the TRPA channel, Painless (Johnson and Carder 2012). The larval cuticle is rich in charged glycoproteins (Silvert et al. 1984) that are likely to have an incredibly high affinity towards dry surfaces, thereby causing the cuticle to adhere to such surfaces. Thus, larval propensity to avoid dry surfaces may arise from noxious mechanical stretch as the larval cuticle adheres to a dry substrate during peristalsis.

## 2.5 Complex Behaviors

### 2.5.1 Feeding Behavior and Social Influences

Feeding behavior is a product of specialized interactions between chemosensory and somatosensory modalities and involves sensing of the internal metabolic state followed by state-dependent regulation of food seeking and feeding. In vertebrates, neuropeptide Y (NPY) signaling in the arcuate nucleus of the hypothalamus is intimately linked to feeding and energy expenditure (Gruninger et al. 2007; Stanley et al. 1985; Tomaszuk et al. 1996). The NPY receptors in both *C. elegans* and *Drosophila* larvae play critical roles in determining the selection of social or solitary feeding (de Bono and Bargmann 1998; Wu et al. 2003). Some worm strains exhibit social feeding, which involves avoidance of noxious chemical stimuli in a process requiring the TRP channels, OCR-2 and OSM-9 (de Bono et al. 2002). Additionally, OCR-2 impacts on the biosynthesis of serotonin (Sokolchik et al. 2005; Zhang et al. 2004)—a neurotransmitter with conserved roles in regulating feeding behavior (Magalhaes et al. 2010; Neckameyer 2010; Sze et al. 2000). OCR-2 also functions in a small subset of peripheral sensory neurons

in *C. elegans* larvae that mediate the detection of nutrient availability and neuropeptide release (Lee and Ashrafi 2008).

Social feeding in worms involves aggregation, and this causes a drop in O<sub>2</sub> levels. Worms have developed a mechanism for detecting changes in O<sub>2</sub> levels as a part of their strategy to promote aggregation, and both OSM-9 and OCR-2 are required for sensing O<sub>2</sub> (Rogers et al. 2006). Mammals also use O<sub>2</sub>-sensing TRP channels, as mouse TRPA1 can be directly activated by O<sub>2</sub> under hyperoxic conditions, through a mechanism involving cysteine modification (Takahashi et al. 2011). It is proposed that TRPA1 may contribute to detecting O<sub>2</sub> toxicity in the mouse (Takahashi et al. 2011).

In *Drosophila* larvae, an NPY family member (known as NPF in flies) mediates the developmental switch from food-seeking behavior in younger larvae to food-avoiding behavior in late third instar larvae (Xu et al. 2008). In response to food, late-stage larvae also display social behavior as they aggregate in order to dig cooperatively through hard food (Wu et al. 2003). Both the food avoidance and aggregation behavior are impaired in *painless* mutant late-stage larvae (Xu et al. 2008). NPF exerts its effects by inhibiting the Painless conductance in larval sensory neurons (Xu et al. 2008). The normal role for Painless in food aversion is consistent with the general function of invertebrate TRPA channels and mammalian TRPA1 in mediating avoidance behavior in response to noxious stimuli.

### 2.5.2 Nicotine-Dependent Behavior

Exposure of worms to nicotine, which is the addictive ingredient in tobacco, causes a variety of behaviors that are reminiscent of those induced in mammals (Dwoskin et al. 1999). These include increased activity to acute exposure, sensitization to intermittent administration of nicotine, and withdrawal upon removal of chronic nicotine (Feng et al. 2006). These behaviors are greatly diminished in worms missing either of two TRPC channels, TRP-1 or TRP-2. Expression of these channels is required in command neurons, which is consistent with their role in locomotion (Feng et al. 2006). Roles for TRP channels in nicotine sensitivity may be conserved throughout animal phylogeny since mouse TRPA1 is activated by nicotine and contributes in vivo to the irritant effects of nicotine (Talavera et al. 2009).

### 2.5.3 Courtship and Mating

Courtship and mating involves a complex interplay between multiple senses, including hearing, touch, chemosensation, and vision. *Drosophila* Painless contributes to mating, as the mutant females display enhanced sexual receptivity (Sakai et al. 2009). The mutant females copulate with a shorter latency than do wild-type females, once the males initiate courtship behavior. A role for Painless in sexual receptivity requires expression of the channel in GABAergic and/or cholinergic neurons (Sakai et al. 2009). Thus, it is unclear if Painless modulates female receptivity by acting in inhibitory or excitatory neurons. Painless also functions in courtship in males, as expression of the channel in olfactory projection neurons in the brain suppresses male-male courtship (Wang et al. 2011).

*C. elegans* display mating behavior, which involves males seeking out the vulva of the hermaphrodite, followed by spicule insertion and sperm transfer (Liu and Sternberg 1995). Male *C. elegans* lacking the TRPP2 homolog, *pkd2*, or its interacting protein, PKD1 (TRPP1), are defective in vulva location (Barr et al. 2001; Barr and Sternberg 1999).

## 2.6 Sperm and Fertilization

A *C. elegans* TRPC homolog, *trp-3*, functions in sperm and is critical for fertility. Upon sperm activation, TRP-3 translocates from an intracellular compartment to the plasma membrane. TRP-3-dependent  $\text{Ca}^{2+}$  influx is proposed to promote gamete fusion (Xu and Sternberg 2003). Roles for mammalian TRPs in sperm function, including TRPC2, have been suggested (Darszon et al. 2012; Jungnickel et al. 2001). However, because human TRPC2 is a pseudogene (Wes et al. 1995), it does not have a role in human sperm.

Loss of the *Drosophila* TRPP2 homolog, Amo, affects sperm function (Gao et al. 2003; Watnick et al. 2003). Normally, the beat frequency of sperm increases after they exit the uterus (Köttgen et al. 2011). The sperm then enters the storage organs, which serves to supply sperm for fertilization over an extended time. Amo is localized to the posterior end of mature sperm and is required for beating hyperactivity and for the backward entry of the sperm into the storage organs (Köttgen et al. 2011).

While the roles of the fly and worm TRPPs are distinct, they both function in ciliated cells. Human TRPP1 and TRPP2, which are disrupted in autosomal polycystic kidney disease (ADPKD), are expressed in monocilia (Gallagher et al. 2010). Thus, TRPPs have evolutionarily conserved roles in ciliated cells.

## 2.7 Metabolism

### 2.7.1 Ionic Homeostasis

$\text{Mg}^{2+}$  homeostasis is essential for animal survival, as low or high intracellular  $\text{Mg}^{2+}$  impairs a wide range of essential cellular events.  $\text{Mg}^{2+}$  is absorbed by the intestines and secreted by the kidneys. In humans, mutations in the  $\text{Mg}^{2+}$  and  $\text{Ca}^{2+}$  permeable channel, TRPM6, cause familial hypomagnesemia with secondary hypocalcemia (HSH), which leads to seizures and muscle spasms (Schlingmann et al. 2002; Walder et al. 2002).

Roles for TRPM channels for  $\text{Mg}^{2+}$  homeostasis are conserved in worms and flies. Two *C. elegans* TRPMs (GON-2 and GTL-1) are required for  $\text{Mg}^{2+}$  uptake by intestinal cells (Teramoto et al. 2005). Worms missing GON-2 and GTL-1 grow poorly under low  $\text{Mg}^{2+}$  conditions. GON-2 and GTL-1 may form distinct channels, since mutation of just *gon-2* or *gtl-1* result in different phenotypes, and the two TRPMs have different  $\text{Mg}^{2+}$  sensitivities. GON-2 is inactive when the  $\text{Mg}^{2+}$  concentration is  $<1$  mM, while GTL-1 is not inhibited by  $\text{Mg}^{2+}$  to a significant



extent and may be constitutively active. Thus, GON-2 only comes into play when the  $Mg^{2+}$  concentration is high, thereby maintaining  $Mg^{2+}$  homeostasis. A third worm TRPM (GTL-2) is expressed in the excretory cell and is required for  $Mg^{2+}$  excretion (Teramoto et al. 2010).

The sole *Drosophila* TRPM functions in the fly kidney equivalent, the Malpighian tubules, where it serves to remove  $Mg^{2+}$  from the hemolymph (Hofmann et al. 2010). The *trpm*-deficient animals are characterized by hypermagnesemia in the hemolymph. Loss of *trpm* also affects intracellular  $Zn^{2+}$  homeostasis (Georgiev et al. 2010). Unlike all other fly TRPs, the TRPM channel is absolutely required for viability. The mutant animals die as prepupae or pupae (Georgiev et al. 2010; Hofmann et al. 2010). Supplementation of the food with high  $Mg^{2+}$  exacerbated the phenotype, resulting in larval lethality (Hofmann et al. 2010).

### 2.7.2 Lysosomal Function and a Model for MLIV

Mutations in the human TRPML1 cause a lysosomal storage disorder, mucopolisidosis type IV (MLIV), which is characterized by motor impairments, severe cognitive deficits, and blindness (Bargal et al. 2000; Bassi et al. 2000; Sun et al. 2000). The *C. elegans* TRPML homolog, CUP-5, is localized to lysosomes, and elimination of this protein results in defective lysosomal biogenesis and maternal-effect embryonic lethality (Fares and Greenwald 2001; Hersh et al. 2002; Treusch et al. 2004). Due to nutrient deprivation, there appears to be an upregulation of autophagy in *cup-5* mutant cells (Schaheen et al. 2006). However, the autophagy is ineffective since there is a decrease in lysosomal biogenesis (Schaheen et al. 2006).

In *Drosophila*, mutation of *trpml* results in severe neurodegeneration (Venkatachalam et al. 2008). The neurons die due to a requirement for TRPML for autophagic removal of damaged mitochondria. TRPML is localized to late endosomes and lysosomes and is essential in a variety of cell types for releasing luminal  $Ca^{2+}$  and promoting  $Ca^{2+}$ -dependent fusion of late endosomes and lysosomes (Venkatachalam et al. 2008, 2013; Wong et al. 2012). The widespread neuronal cell death is a consequence of a role for TRPML in two cell types. First, *trpml* functions in neurons to promote cell survival. Second, *trpml* acts in phagocytic cells such as glia and macrophages to remove early apoptotic neurons (Venkatachalam et al. 2008). In the absence of TRPML activity, the early apoptotic neurons are not removed effectively. This results in accumulation of late apoptotic neurons, release of cytotoxic agents, and magnification of cell death due to a bystander effect (Venkatachalam et al. 2008).

#### Concluding Remarks

There are two recurring themes that apply to the worm and fly TRP channels. First, these channels are multitaskers. There are many examples that illustrate this concept. The fly TRPL channel contributes to light detection, cool sensation, taste adaptation, and sensitivity to  $CO_2$  (Badsha et al. 2012; Kwon et al. 2010b; Niemeyer et al. 1996; Phillips et al. 1992; Rosenzweig et al. 2008; Zhang et al. 2013c). Painless serves in the detection of noxious heat, noxious

mechanical stimuli, gravity, wasabi, food avoidance stimuli in late-stage larvae, dry surfaces, and in signals that control female receptivity and male-male courtship (Al-Anzi et al. 2006; Johnson and Carder 2012; Sakai et al. 2009; Sun et al. 2009; Tracey et al. 2003; Wang et al. 2011; Xu et al. 2008). The worm TRPV channel OSM-9 functions in olfaction, contact chemosensation, mechanosensation, thermosensation, O<sub>2</sub> sensation, and social feeding (Colbert et al. 1997; de Bono et al. 2002; Rogers et al. 2006). *Drosophila* TRPA1 is a particularly notable example of a polymodal sensor as it either directly or indirectly senses suboptimal or excessively warm temperature, noxious olfactory and gustatory cues, and light (Kang et al. 2010a, 2012; Kim et al. 2010; Kwon et al. 2008, 2010a; Lee and Montell 2013; Rosenzweig et al. 2005; Viswanath et al. 2003).

Second, the repertoire of functions of worm, fly, and vertebrate TRP channels is far more similar than initially envisioned. Roles for PLC signaling and TRP channels in phototransduction are not peculiar to flies but are conserved in mammalian ipRGCs (Berson et al. 2002; Provencio et al. 2000; Schmidt et al. 2011). Thermally activated TRPs are also employed in vertebrates and invertebrates. However, some TRP channels in flies and mammals exhibit opposite thermal activities. TRPA1 is heat activated in flies (Viswanath et al. 2003), but cold activated in mice (Bandell et al. 2004; Karashima et al. 2009; Kwan et al. 2006; Story et al. 2003). Nevertheless, in some snakes (Gracheva et al. 2010), lizards, and frogs (Saito et al. 2012), TRPA1 is heat activated. The threshold for heat activation for rattlesnake TRPA1 (~28 °C) is similar to fly TRPA1 (~24–29 °C) (Gracheva et al. 2010; Viswanath et al. 2003), rather than mammalian TRPA1. A similar scenario emerges with thermally activated TRPV channels, which are heat activated in mammals (Caterina 2007). A *Drosophila* TRPV channel, Inactive, functions in the discrimination of 17.5 °C and slightly cooler temperatures (14–16 °C) (Kwon et al. 2010b). TRPV3 in western clawed frogs is cool activated with a threshold around 16 °C (Saito et al. 2011). The mechanisms for detecting some noxious chemicals are also conserved between several vertebrate and invertebrate TRP channels, such as reactive electrophiles (e.g., allyl isothiocyanate), which activate mammalian and *Drosophila* TRPA1 (Bandell et al. 2004; Hinman et al. 2006; Jordt et al. 2004; Kang et al. 2010a; Macpherson et al. 2007). Evolutionarily conserved functions for TRP channels are not limited to sensory physiology, as worms, flies, and vertebrates use TRPMs in ionic homeostasis: TRPPs in cilia and TRPMLs in lysosomes.

In view of the many functional similarities between invertebrate and vertebrate TRPs, it is intriguing to speculate that some roles that are currently known specifically in worms or flies will turn out to be conserved in mammals. Among the many examples are gravity sensation, hygrosensation, and fertility.

## References

- Acharya JK, Jalink K, Hardy RW, Hartenstein V, Zuker CS (1997) InsP<sub>3</sub> receptor essential for growth and differentiation but not for vision in *Drosophila*. *Neuron* 18:881–887
- Al-Anzi B, Tracey WD Jr, Benzer S (2006) Response of *Drosophila* to wasabi is mediated by *painless*, the fly homolog of mammalian TRPA1/ANKTM1. *Curr Biol* 16:1034–1040
- Al-Anzi B, Sapin V, Waters C, Zinn K, Wyman RJ, Benzer S (2009) Obesity-blocking neurons in *Drosophila*. *Neuron* 63:329–341
- Allada R, Chung BY (2010) Circadian organization of behavior and physiology in *Drosophila*. *Annu Rev Physiol* 72:605–624
- Badsha F, Kain P, Prabhakar S, Sundaram S, Padinjat R, Rodrigues V, Hasan G (2012) Mutants in *Drosophila* TRPC channels reduce olfactory sensitivity to carbon dioxide. *PLoS One* 7:e49848
- Bandell M, Story GM, Hwang SW, Viswanath V, Eid SR, Petrus MJ, Earley TJ, Patapoutian A (2004) Noxious cold ion channel TRPA1 is activated by pungent compounds and bradykinin. *Neuron* 41:849–857
- Bargal R, Avidan N, Ben-Asher E, Olender Z, Zeigler M, Frumkin A, Raas-Rothschild A, Glusman G, Lancet D, Bach G (2000) Identification of the gene causing mucopolipidosis type IV. *Nat Genet* 26:118–123
- Barr MM, Sternberg PW (1999) A polycystic kidney-disease gene homologue required for male mating behaviour in *C. elegans*. *Nature* 401:386–389
- Barr MM, DeModena J, Braun D, Nguyen CQ, Hall DH, Sternberg PW (2001) The *Caenorhabditis elegans* autosomal dominant polycystic kidney disease gene homologs *lov-1* and *pkd-2* act in the same pathway. *Curr Biol* 11:1341–1346
- Bassi MT, Manzoni M, Monti E, Pizzo MT, Ballabio A, Borsani G (2000) Cloning of the gene encoding a novel integral membrane protein, mucolipidin- and identification of the two major founder mutations causing mucopolipidosis type IV. *Am J Hum Genet* 67:1110–1120
- Benton R, Vannice KS, Gomez-Diaz C, Vosshall LB (2009) Variant ionotropic glutamate receptors as chemosensory receptors in *Drosophila*. *Cell* 136:149–162
- Berson DM, Dunn FA, Takao M (2002) Phototransduction by retinal ganglion cells that set the circadian clock. *Science* 295:1070–1073
- Bloomquist BT, Shortridge RD, Schneuwly S, Perdew M, Montell C, Steller H, Rubin G, Pak WL (1988) Isolation of a putative phospholipase C gene of *Drosophila*, *norpA*, and its role in phototransduction. *Cell* 54:723–733
- Caterina MJ (2007) Transient receptor potential ion channels as participants in thermosensation and thermoregulation. *Am J Physiol Regul Integr Comp Physiol* 292:R64–R76
- Caterina MJ, Rosen TA, Tominaga M, Brake AJ, Julius D (1999) A capsaicin-receptor homologue with a high threshold for noxious heat. *Nature* 398:436–441
- Cheng LE, Song W, Looger LL, Jan LY, Jan YN (2010) The role of the TRP channel NompC in *Drosophila* larval and adult locomotion. *Neuron* 67:373–380
- Christensen AP, Corey DP (2007) TRP channels in mechanosensation: direct or indirect activation? *Nat Rev Neurosci* 8:510–521
- Chyb S, Raghu P, Hardie RC (1999) Polyunsaturated fatty acids activate the *Drosophila* light-sensitive channels TRP and TRPL. *Nature* 397:255–259
- Clyne PJ, Warr CG, Freeman MR, Lessing D, Kim J, Carlson JR (1999) A novel family of divergent seven-transmembrane proteins: candidate odorant receptors in *Drosophila*. *Neuron* 22:327–338
- Colbert HA, Smith TL, Bargmann CI (1997) OSM-9, a novel protein with structural similarity to channels, is required for olfaction, mechanosensation, and olfactory adaptation in *Caenorhabditis elegans*. *J Neurosci* 17:8259–8269
- Conti B (2008) Considerations on temperature, longevity and aging. *Cell Mol Life Sci* 65:1626–1630
- Cosens DJ, Manning A (1969) Abnormal electroretinogram from a *Drosophila* mutant. *Nature* 224:285–287

- Darszon A, Sanchez-Cardenas C, Orta G, Sanchez-Tusie AA, Beltran C, Lopez-Gonzalez I, Granados-Gonzalez G, Trevino CL (2012) Are TRP channels involved in sperm development and function? *Cell Tissue Res* 349:749–764
- de Bono M, Bargmann CI (1998) Natural variation in a neuropeptide Y receptor homolog modifies social behavior and food response in *C. elegans*. *Cell* 94:679–689
- de Bono M, Tobin DM, Davis MW, Avery L, Bargmann CI (2002) Social feeding in *Caenorhabditis elegans* is induced by neurons that detect aversive stimuli. *Nature* 419:899–903
- Dhaka A, Viswanath V, Patapoutian A (2006) TRP ion channels and temperature sensation. *Annu Rev Neurosci* 29:135–161
- Dong XP, Shen D, Wang X, Dawson T, Li X, Zhang Q, Cheng X, Zhang Y, Weisman LS, Dellling M, Xu H (2010) PI(3,5)P<sub>2</sub> controls membrane traffic by direct activation of mucolipin Ca<sup>2+</sup> release channels in the endolysosome. *Nat Commun* 1:38. doi:10.1038/ncomms1037
- Dwoskin LP, Crooks PA, Teng L, Green TA, Bardo MT (1999) Acute and chronic effects of normocotine on locomotor activity in rats: altered response to nicotine. *Psychopharmacology (Berlin)* 145:442–451
- Eberl DF, Hardy RW, Kernan MJ (2000) Genetically similar transduction mechanisms for touch and hearing in *Drosophila*. *J Neurosci* 20:5981–5988
- Effertz T, Wiek R, Gopfert MC (2011) NompC TRP channel is essential for *Drosophila* sound receptor function. *Curr Biol* 21:592–597
- Effertz T, Nadrowski B, Piepenbrock D, Albert JT, Gopfert MC (2012) Direct gating and mechanical integrity of *Drosophila* auditory transducers require TRPN1. *Nat Neurosci* 15:1198–1200
- Fares H, Greenwald I (2001) Regulation of endocytosis by CUP-5, the *Caenorhabditis elegans* mucolipin-1 homolog. *Nat Genet* 28:64–68
- Feng Z, Li W, Ward A, Piggott BJ, Larkspur ER, Sternberg PW, Xu XZ (2006) A *C. elegans* model of nicotine-dependent behavior: regulation by TRP-family channels. *Cell* 127:621–633
- Fowler MA, Montell C (2013) *Drosophila* TRP channels and animal behavior. *Life Sci* 92:394–403
- Fu Y, Yau KW (2007) Phototransduction in mouse rods and cones. *Pflügers Arch* 454:805–819
- Gallagher AR, Germino GG, Somlo S (2010) Molecular advances in autosomal dominant polycystic kidney disease. *Adv Chronic Kidney Dis* 17:118–130
- Gallio M, Ofstad TA, Macpherson LJ, Wang JW, Zuker CS (2011) The coding of temperature in the *Drosophila* brain. *Cell* 144:614–624
- Gao Q, Chess A (1999) Identification of candidate *Drosophila* olfactory receptors from genomic DNA sequence. *Genomics* 60:31–39
- Gao Z, Ruden DM, Lu X (2003) PKD2 cation channel is required for directional sperm movement and male fertility. *Curr Biol* 13:2175–2178
- Georgiev P, Okkenhaug H, Drews A, Wright D, Lambert S, Flick M, Carta V, Martel C, Oberwinkler J, Raghu P (2010) TRPM channels mediate zinc homeostasis and cellular growth during *Drosophila* larval development. *Cell Metab* 12:386–397
- Glaser FT, Stanewsky R (2007) Synchronization of the *Drosophila* circadian clock by temperature cycles. *Cold Spring Harb Symp Quant Biol* 72:233–242
- Glauser DA, Chen WC, Agin R, Macinnis BL, Hellman AB, Garrity PA, Tan MW, Goodman MB (2011) Heat avoidance is regulated by transient receptor potential (TRP) channels and a neuropeptide signaling pathway in *Caenorhabditis elegans*. *Genetics* 188:91–103
- Gong Z, Son W, Chung YD, Kim J, Shin DW, McClung CA, Lee Y, Lee HW, Chang DJ, Kaang BK, Cho H, Oh U, Hirsh J, Kernan MJ, Kim C (2004) Two interdependent TRPV channel subunits, Inactive and Nanchung, mediate hearing in *Drosophila*. *J Neurosci* 24:9059–9066
- Göpfert MC, Albert JT, Nadrowski B, Kamikouchi A (2006) Specification of auditory sensitivity by *Drosophila* TRP channels. *Nat Neurosci* 9:999–1000

- Gracheva EO, Ingolia NT, Kelly YM, Cordero-Morales JF, Hollopeter G, Chesler AT, Sanchez EE, Perez JC, Weissman JS, Julius D (2010) Molecular basis of infrared detection by snakes. *Nature* 464:1006–1011
- Gruninger TR, LeBoeuf B, Liu Y, Garcia LR (2007) Molecular signaling involved in regulating feeding and other motivated behaviors. *Mol Neurobiol* 35:1–20
- Hamada FN, Rosenzweig M, Kang K, Pulver SR, Ghezzi A, Jegla TJ, Garrity PA (2008) An internal thermal sensor controlling temperature preference in *Drosophila*. *Nature* 454:217–220
- Hardie RC, Franze K (2012) Photomechanical responses in *Drosophila* photoreceptors. *Science* 338:260–263
- Hardie RC, Minke B (1992) The *trp* gene is essential for a light-activated  $Ca^{2+}$  channel in *Drosophila* photoreceptors. *Neuron* 8:643–651
- Hardin PE (2011) Molecular genetic analysis of circadian timekeeping in *Drosophila*. *Adv Genet* 74:141–173
- Harteneck C, Obukhov AG, Zobel A, Kalkbrenner F, Schultz G (1995) The *Drosophila* cation channel *trpl* expressed in *Sf9* cells is stimulated by agonists of G-protein-coupled receptors. *FEBS Lett* 358:297–300
- Hersh BM, Hartwig E, Horvitz HR (2002) The *Caenorhabditis elegans* mucolipin-like gene *cup-5* is essential for viability and regulates lysosomes in multiple cell types. *Proc Natl Acad Sci U S A* 99:4355–4360
- Hilliard MA, Bergamasco C, Arbucci S, Plasterk RH, Bazzicalupo P (2004) Worms taste bitter: ASH neurons, QUI-1, GPA-3 and ODR-3 mediate quinine avoidance in *Caenorhabditis elegans*. *EMBO J* 23:1101–1111
- Hinman A, Chuang HH, Bautista DM, Julius D (2006) TRP channel activation by reversible covalent modification. *Proc Natl Acad Sci U S A* 103:19564–19568
- Hofmann T, Chubanov V, Chen X, Dietz AS, Gudermann T, Montell C (2010) *Drosophila* TRPM channel is essential for the control of extracellular magnesium levels. *PLoS One* 5:e10519
- Howard J, Bechstedt S (2004) Hypothesis: a helix of ankyrin repeats of the NOMPC-TRP ion channel is the gating spring of mechanoreceptors. *Curr Biol* 14:R224–R226
- Hu Y, Vaca L, Zhu X, Birnbaumer L, Kunze DL, Schilling WP (1994) Appearance of a novel  $Ca^{2+}$  influx pathway in *Sf9* insect cells following expression of the transient potential-like (*trpl*) protein of *Drosophila*. *Biochem Biophys Res Commun* 201:1050–1056
- Huang J, Liu CH, Hughes SA, Postma M, Schwiening CJ, Hardie RC (2010) Activation of TRP channels by protons and phosphoinositide depletion in *Drosophila* photoreceptors. *Curr Biol* 20:189–197
- Hwang RY, Stearns NA, Tracey WD (2012) The ankyrin repeat domain of the TRPA protein Painless is important for thermal nociception but not mechanical nociception. *PLoS One* 7:e30090
- Inoue H, Yoshioka T, Hotta Y (1985) A genetic study of inositol trisphosphate involvement in phototransduction using *Drosophila* mutants. *Biochem Biophys Res Commun* 132:513–519
- Johnson WA, Carder JW (2012) *Drosophila* nociceptors mediate larval aversion to dry surface environments utilizing both the Painless TRP channel and the DEG/ENaC subunit, PPK1. *PLoS One* 7:e32878
- Jordt SE, Bautista DM, Chuang HH, McKemy DD, Zygmunt PM, Hogestätt ED, Meng ID, Julius D (2004) Mustard oils and cannabinoids excite sensory nerve fibres through the TRP channel ANKTM1. *Nature* 427:260–265
- Jungnickel MK, Marrero H, Birnbaumer L, Lemos JR, Florman HM (2001) Trp2 regulates entry of  $Ca^{2+}$  into mouse sperm triggered by egg ZP3. *Nat Cell Biol* 3:499–502
- Kahn-Kirby AH, Bargmann CI (2006) TRP channels in *C. elegans*. *Annu Rev Physiol* 68:719–736
- Kamikouchi A (2013) Auditory neuroscience in fruit flies. *Neurosci Res* 76:113–118
- Kamikouchi A, Inagaki HK, Effertz T, Hendrich O, Fiala A, Gopfert MC, Ito K (2009) The neural basis of *Drosophila* gravity-sensing and hearing. *Nature* 458:165–171

- Kang K, Pulver SR, Panzano VC, Chang EC, Griffith LC, Theobald DL, Garrity PA (2010a) Analysis of *Drosophila* TRPA1 reveals an ancient origin for human chemical nociception. *Nature* 464:597–600
- Kang L, Gao J, Schafer WR, Xie Z, Xu XZ (2010b) *C. elegans* TRP family protein TRP-4 is a pore-forming subunit of a native mechanotransduction channel. *Neuron* 67:381–391
- Kang K, Panzano VC, Chang EC, Ni L, Dainis AM, Jenkins AM, Regna K, Muskavitch MA, Garrity PA (2012) Modulation of TRPA1 thermal sensitivity enables sensory discrimination in *Drosophila*. *Nature* 481:76–80
- Karashima Y, Talavera K, Everaerts W, Janssens A, Kwan KY, Vennekens R, Nilius B, Voets T (2009) TRPA1 acts as a cold sensor in vitro and in vivo. *Proc Natl Acad Sci U S A* 106:1273–1278
- Kernan MJ (2007) Mechanotransduction and auditory transduction in *Drosophila*. *Pflugers Arch* 454:703–720
- Kim J, Chung YD, Park DY, Choi S, Shin DW, Soh H, Lee HW, Son W, Yim J, Park CS, Kernan MJ, Kim C (2003) A TRPV family ion channel required for hearing in *Drosophila*. *Nature* 424:81–84
- Kim SH, Lee Y, Akitake B, Woodward OM, Guggino WB, Montell C (2010) *Drosophila* TRPA1 channel mediates chemical avoidance in gustatory receptor neurons. *Proc Natl Acad Sci U S A* 107:8440–8445
- Kindt KS, Viswanath V, Macpherson L, Quast K, Hu H, Patapoutian A, Schafer WR (2007) *Caenorhabditis elegans* TRPA-1 functions in mechanosensation. *Nat Neurosci* 10:568–577
- Köttgen M, Hofherr A, Li W, Chu K, Cook S, Montell C, Watnick T (2011) *Drosophila* sperm swim backwards in the female reproductive tract and are activated via TRPP2 ion channels. *PLoS One* 6:e20031
- Kwan KY, Allchorne AJ, Vollrath MA, Christensen AP, Zhang DS, Woolf CJ, Corey DP (2006) TRPA1 contributes to cold, mechanical, and chemical nociception but is not essential for hair-cell transduction. *Neuron* 50:277–289
- Kwon Y, Shim HS, Wang X, Montell C (2008) Control of thermotactic behavior via coupling of a TRP channel to a phospholipase C signaling cascade. *Nat Neurosci* 11:871–873
- Kwon Y, Kim SH, Ronderos DS, Lee Y, Akitake B, Woodward OM, Guggino WB, Smith DP, Montell C (2010a) *Drosophila* TRPA1 channel is required to avoid the naturally occurring insect repellent citronellal. *Curr Biol* 20:1672–1678
- Kwon Y, Shen WL, Shim HS, Montell C (2010b) Fine thermotactic discrimination between the optimal and slightly cooler temperatures via a TRPV channel in chordotonal neurons. *J Neurosci* 30:10465–10471
- Kwon I, Choe HK, Son GH, Kim K (2011) Mammalian molecular clocks. *Exp Neurobiol* 20:18–28
- Lee BH, Ashrafi K (2008) A TRPV channel modulates *C. elegans* neurosecretion, larval starvation survival, and adult lifespan. *PLoS Genet* 4:e1000213
- Lee Y, Montell C (2013) *Drosophila* TRPA1 functions in temperature control of circadian rhythm in pacemaker neurons. *J Neurosci* 33:6716–6725
- Lee Y, Lee Y, Lee J, Bang S, Hyun S, Kang J, Hong ST, Bae E, Kaang BK, Kim J (2005) Pyrexia is a new thermal transient receptor potential channel endowing tolerance to high temperatures in *Drosophila melanogaster*. *Nat Genet* 37:305–310
- Lehnert BP, Baker AE, Gaudry Q, Chiang AS, Wilson RI (2013) Distinct roles of TRP channels in auditory transduction and amplification in *Drosophila*. *Neuron* 77:115–128
- Li W, Feng Z, Sternberg PW, Xu XZ (2006) A *C. elegans* stretch receptor neuron revealed by a mechanosensitive TRP channel homologue. *Nature* 440:684–687
- Liu KS, Sternberg PW (1995) Sensory regulation of male mating behavior in *Caenorhabditis elegans*. *Neuron* 14:79–89
- Liu CH, Wang T, Postma M, Obukhov AG, Montell C, Hardie RC (2007a) *In vivo* identification and manipulation of the Ca<sup>2+</sup> selectivity filter in the *Drosophila* transient receptor potential channel. *J Neurosci* 27:604–615

- Liu L, Li Y, Wang R, Yin C, Dong Q, Hing H, Kim C, Welsh MJ (2007b) *Drosophila* hygrosensation requires the TRP channels water witch and nanchung. *Nature* 450:294–298
- Liu J, Ward A, Gao J, Dong Y, Nishio N, Inada H, Kang L, Yu Y, Ma D, Xu T, Mori I, Xie Z, Xu XZ (2010) *C. elegans* phototransduction requires a G protein-dependent cGMP pathway and a taste receptor homolog. *Nat Neurosci* 13:715–722
- Macpherson LJ, Dubin AE, Evans MJ, Marr F, Schultz PG, Cravatt BF, Patapoutian A (2007) Noxious compounds activate TRPA1 ion channels through covalent modification of cysteines. *Nature* 445:541–545
- Magalhaes CP, de Freitas MF, Nogueira MI, Campina RC, Takase LF, de Souza SL, de Castro RM (2010) Modulatory role of serotonin on feeding behavior. *Nutr Neurosci* 13:246–255
- Matsuura H, Sokabe T, Kohno K, Tominaga M, Kadowaki T (2009) Evolutionary conservation and changes in insect TRP channels. *BMC Evol Biol* 9:228
- Montell C (2001) Physiology, phylogeny and functions of the TRP superfamily of cation channels. *Sci STKE* 2001(90):re1
- Montell C (2005) The TRP superfamily of cation channels. *Sci STKE* 2005(272):re3
- Montell C (2009) A taste of the *Drosophila* gustatory receptors. *Curr Opin Neurobiol* 19:345–353
- Montell C (2011) The history of TRP channels, a commentary and reflection. *Pflugers Arch* 461:499–506
- Montell C, Rubin GM (1989) Molecular characterization of the *Drosophila trp* locus: a putative integral membrane protein required for phototransduction. *Neuron* 2:1313–1323
- Neckameyer WS (2010) A trophic role for serotonin in the development of a simple feeding circuit. *Dev Neurosci* 32:217–237
- Neely GG, Keene AC, Duchek P, Chang EC, Wang QP, Aksoy YA, Rosenzweig M, Costigan M, Woolf CJ, Garrity PA, Penninger JM (2011) *TrpAI* regulates thermal nociception in *Drosophila*. *PLoS One* 6:e24343
- Niemeyer BA, Suzuki E, Scott K, Jalink K, Zuker CS (1996) The *Drosophila* light-activated conductance is composed of the two channels TRP and TRPL. *Cell* 85:651–659
- Pérez CA, Huang L, Rong M, Kozak JA, Preuss AK, Zhang H, Max M, Margolske RF (2002) A transient receptor potential channel expressed in taste receptor cells. *Nat Neurosci* 5:1169–1176
- Peschel N, Helfrich-Förster C (2011) Setting the clock—by nature: circadian rhythm in the fruitfly *Drosophila melanogaster*. *FEBS Lett* 585:1435–1442
- Petersen LK, Stowers RS (2011) A Gateway MultiSite recombination cloning toolkit. *PLoS One* 6:e24531
- Phillips AM, Bull A, Kelly LE (1992) Identification of a *Drosophila* gene encoding a calmodulin-binding protein with homology to the *trp* phototransduction gene. *Neuron* 8:631–642
- Provencio I, Rodriguez IR, Jiang G, Hayes WP, Moreira EF, Rollag MD (2000) A novel human opsin in the inner retina. *J Neurosci* 20:600–605
- Raghu P, Colley NJ, Weibel R, James T, Hasan G, Danin M, Selinger Z, Hardie RC (2000) Normal phototransduction in *Drosophila* photoreceptors lacking an InsP<sub>3</sub> receptor gene. *Mol Cell Neurosci* 15:429–445
- Reppert SM, Weaver DR (2002) Coordination of circadian timing in mammals. *Nature* 418:935–941
- Robertson HM, Warr CG, Carlson JR (2003) Molecular evolution of the insect chemoreceptor gene superfamily in *Drosophila melanogaster*. *Proc Natl Acad Sci U S A* 100(Suppl 2):14537–14542
- Rogers C, Persson A, Cheung B, de Bono M (2006) Behavioral motifs and neural pathways coordinating O<sub>2</sub> responses and aggregation in *C. elegans*. *Curr Biol* 16:649–659
- Rosenzweig M, Brenman KM, Taylor TD, Phelps P, Patapoutian A, Garrity PA (2005) The *Drosophila* ortholog of vertebrate TRPA1 regulates thermotaxis. *Genes Dev* 19:419–424
- Rosenzweig M, Kang K, Garrity PA (2008) Distinct TRP channels are required for warm and cool avoidance in *Drosophila melanogaster*. *Proc Natl Acad Sci U S A* 105:14668–14673

- Saito S, Fukuta N, Shingai R, Tominaga M (2011) Evolution of vertebrate transient receptor potential vanilloid 3 channels: opposite temperature sensitivity between mammals and western clawed frogs. *PLoS Genet* 7:e1002041
- Saito S, Nakatsuka K, Takahashi K, Fukuta N, Imagawa T, Ohta T, Tominaga M (2012) Analysis of transient receptor potential ankyrin 1 (TRPA1) in frogs and lizards illuminates both nociceptive heat and chemical sensitivities and coexpression with TRP vanilloid 1 (TRPV1) in ancestral vertebrates. *J Biol Chem* 287:30743–30754
- Sakai T, Kasuya J, Kitamoto T, Aigaki T (2009) The *Drosophila* TRPA channel, Painless, regulates sexual receptivity in virgin females. *Genes Brain Behav* 8:546–557
- Sayed O, Benzer S (1996) Behavioral genetics of thermosensation and hygro-sensation in *Drosophila*. *Proc Natl Acad Sci U S A* 93:6079–6084
- Schaheen L, Dang H, Fares H (2006) Basis of lethality in *C. elegans* lacking CUP-5, the Muclolipidosis Type IV orthologue. *Dev Biol* 293:382–391
- Schlingmann KP, Weber S, Peters M, Niemann Nejsum L, Vitzthum H, Klingel K, Kratz M, Haddad E, Ristoff E, Dinour D, Syrrou M, Nielsen S, Sassen M, Waldegger S, Seyberth HW, Konrad M (2002) Hypomagnesemia with secondary hypocalcemia is caused by mutations in TRPM6, a new member of the TRPM gene family. *Nat Genet* 31:166–170
- Schmidt TM, Chen SK, Hattar S (2011) Intrinsically photosensitive retinal ganglion cells: many subtypes, diverse functions. *Trends Neurosci* 34:572–580
- Senatore S, Rami Reddy V, Semeriva M, Perrin L, Lalevee N (2010) Response to mechanical stress is mediated by the TRPA channel Painless in the *Drosophila* heart. *PLoS Genet* 6:e1001088
- Sharif-Naeini R, Dedman A, Folgering JH, Duprat F, Patel A, Nilius B, Honore E (2008) TRP channels and mechanosensory transduction: insights into the arterial myogenic response. *Pflugers Arch* 456:529–540
- Shen WL, Kwon Y, Adegbola AA, Luo J, Chess A, Montell C (2011) Function of rhodopsin in temperature discrimination in *Drosophila*. *Science* 331:1333–1336
- Sidi S, Friedrich RW, Nicolson T (2003) NompC TRP channel required for vertebrate sensory hair cell mechanotransduction. *Science* 301:96–99
- Silvert DJ, Doctor J, Quesada L, Fristrom JW (1984) Pupal and larval cuticle proteins of *Drosophila melanogaster*. *Biochemistry* 23:5767–5774
- Sokabe T, Tsujiuchi S, Kadowaki T, Tominaga M (2008) *Drosophila* Painless is a Ca<sup>2+</sup>-requiring channel activated by noxious heat. *J Neurosci* 28:9929–9938
- Sokolchik I, Tanabe T, Baldi PF, Sze JY (2005) Polymodal sensory function of the *Caenorhabditis elegans* OCR-2 channel arises from distinct intrinsic determinants within the protein and is selectively conserved in mammalian TRPV proteins. *J Neurosci* 25:1015–1023
- Sprecher SG, Desplan C (2008) Switch of rhodopsin expression in terminally differentiated *Drosophila* sensory neurons. *Nature* 454:533–537
- Stanley BG, Leibowitz SF, Eppel N, St-Pierre S, Hoebel BG (1985) Suppression of norepinephrine-elicited feeding by neurotensin: evidence for behavioral, anatomical and pharmacological specificity. *Brain Res* 343:297–304
- Störtkuhl KF, Hovemann BT, Carlson JR (1999) Olfactory adaptation depends on the Trp Ca<sup>2+</sup> channel in *Drosophila*. *J Neurosci* 19:4839–4846
- Story GM, Peier AM, Reeve AJ, Eid SR, Mosbacher J, Hricik TR, Earley TJ, Hergarden AC, Andersson DA, Hwang SW, McIntyre P, Jegla T, Bevan S, Patapoutian A (2003) ANKTM1, a TRP-like channel expressed in nociceptive neurons, is activated by cold temperatures. *Cell* 112:819–829
- Sun M, Goldin E, Stahl S, Falardeau JL, Kennedy JC, Acierno JS Jr, Bove C, Kaneski CR, Nagle J, Bromley MC, Colman M, Schiffmann R, Slaughter SA (2000) Muclolipidosis type IV is caused by mutations in a gene encoding a novel transient receptor potential channel. *Hum Mol Genet* 9:2471–2478
- Sun Y, Liu L, Ben-Shahar Y, Jacobs JS, Eberl DF, Welsh MJ (2009) TRPA channels distinguish gravity sensing from hearing in Johnston's organ. *Proc Natl Acad Sci U S A* 106:13606–13611



- Sze JY, Victor M, Loer C, Shi Y, Ruvkun G (2000) Food and metabolic signalling defects in a *Caenorhabditis elegans* serotonin-synthesis mutant. *Nature* 403:560–564
- Takahashi N, Kuwaki T, Kiyonaka S, Numata T, Kozai D, Mizuno Y, Yamamoto S, Naito S, Knevels E, Carmeliet P, Oga T, Kaneko S, Suga S, Nokami T, Yoshida J, Mori Y (2011) TRPA1 underlies a sensing mechanism for O<sub>2</sub>. *Nat Chem Biol* 7:701–711
- Talavera K, Gees M, Karashima Y, Meseguer VM, Vanoirbeek JA, Damann N, Everaerts W, Benoit M, Janssens A, Vennekens R, Viana F, Nemery B, Nilius B, Voets T (2009) Nicotine activates the chemosensory cation channel TRPA1. *Nat Neurosci* 12:1293–1299
- Teramoto T, Lambie EJ, Iwasaki K (2005) Differential regulation of TRPM channels governs electrolyte homeostasis in the *C. elegans* intestine. *Cell Metab* 1:343–354
- Teramoto T, Sternick LA, Kage-Nakadai E, Sajjadi S, Siembida J, Mitani S, Iwasaki K, Lambie EJ (2010) Magnesium excretion in *C. elegans* requires the activity of the GTL-2 TRPM channel. *PLoS One* 5:e9589
- Tobin D, Madsen D, Kahn-Kirby A, Peckol E, Moulder G, Barstead R, Maricq A, Bargmann C (2002) Combinatorial expression of TRPV channel proteins defines their sensory functions and subcellular localization in *C. elegans* neurons. *Neuron* 35:307–318
- Tomaszuk A, Simpson C, Williams G (1996) Neuropeptide Y, the hypothalamus and the regulation of energy homeostasis. *Horm Res* 46:53–58
- Tracey WD, Wilson RI, Laurent G, Benzer S (2003) *painless*, a *Drosophila* gene essential for nociception. *Cell* 113:261–273
- Treusch S, Knuth S, Slaughter SA, Goldin E, Grant BD, Fares H (2004) *Caenorhabditis elegans* functional orthologue of human protein h-mucolipin-1 is required for lysosome biogenesis. *Proc Natl Acad Sci U S A* 101:4483–4488
- Tsubouchi A, Caldwell JC, Tracey WD (2012) Dendritic filopodia, Ripped Pocket, NOMPC, and NMDARs contribute to the sense of touch in *Drosophila* larvae. *Curr Biol* 22:2124–2134
- Vaca L, Sinkins WG, Hu Y, Kunze DL, Schilling WP (1994) Activation of recombinant *trp* by thapsigargin in Sf9 insect cells. *Am J Physiol* 266:C1501–C1505
- Venkatachalam K, Montell C (2007) TRP channels. *Annu Rev Biochem* 76:387–417
- Venkatachalam K, Long A, Elsaesser R, Nikolaeva D, Broadie K, Montell C (2008) Motor deficit in a *Drosophila* model of mucopolidosis type IV due to defective clearance of apoptotic cells. *Cell* 135:838–851
- Venkatachalam K, Wong CO, Montell C (2013) Feast or famine: role of TRPML in preventing cellular amino acid starvation. *Autophagy* 9:98–100
- Viswanath V, Story GM, Peier AM, Petrus MJ, Lee VM, Hwang SW, Patapoutian A, Jegla T (2003) Opposite thermosensor in fruitfly and mouse. *Nature* 423:822–823
- Vosshall LB, Stocker RF (2007) Molecular architecture of smell and taste in *Drosophila*. *Annu Rev Neurosci* 30:505–533
- Vosshall LB, Amrein H, Morozov PS, Rzhetsky A, Axel R (1999) A spatial map of olfactory receptor expression in the *Drosophila* antenna. *Cell* 96:725–736
- Walder RY, Landau D, Meyer P, Shalev H, Tsolia M, Borochowitz Z, Boettger MB, Beck GE, Englehardt RK, Carmi R, Sheffield VC (2002) Mutation of TRPM6 causes familial hypomagnesemia with secondary hypocalcemia. *Nat Genet* 31:171–174
- Walker RG, Willingham AT, Zuker CS (2000) A *Drosophila* mechanosensory transduction channel. *Science* 287:2229–2234
- Wang T, Wang X, Xie Q, Montell C (2008) The SOCS box protein STOPS Is required for phototransduction through its effects on phospholipase C. *Neuron* 57:56–68
- Wang G, Qiu YT, Lu T, Kwon HW, Pitts RJ, Van Loon JJ, Takken W, Zwiebel LJ (2009) *Anopheles gambiae* TRPA1 is a heat-activated channel expressed in thermosensitive sensilla of female antennae. *Eur J Neurosci* 30:967–974
- Wang K, Guo Y, Wang F, Wang Z (2011) *Drosophila* TRPA channel *painless* inhibits male-male courtship behavior through modulating olfactory sensation. *PLoS One* 6:e25890
- Ward A, Liu J, Feng Z, Xu XZ (2008) Light-sensitive neurons and channels mediate phototaxis in *C. elegans*. *Nat Neurosci* 11:916–922

- Watnick TJ, Jin Y, Matunis E, Kernan MJ, Montell C (2003) A flagellar polycystin-2 homolog required for male fertility in *Drosophila*. *Curr Biol* 13:2179–2184
- Wes PD, Chevesich J, Jeromin A, Rosenberg C, Stetten G, Montell C (1995) TRPC1, a human homolog of a *Drosophila* store-operated channel. *Proc Natl Acad Sci U S A* 92:9652–9656
- Wolfgang W, Simoni A, Gentile C, Stanewsky R (2013) The Pyrexia transient receptor potential channel mediates circadian clock synchronization to low temperature cycles in *Drosophila melanogaster*. *Proc Biol Sci* 280:20130959
- Wolstenholme AJ, Williamson SM, Reaves BJ (2011) TRP channels in parasites. *Adv Exp Med Biol* 704:359–371
- Wong CO, Li R, Montell C, Venkatachalam K (2012) *Drosophila* TRPML is required for TORC1 activation. *Curr Biol* 22:1616–1621
- Wu Q, Wen T, Lee G, Park JH, Cai HN, Shen P (2003) Developmental control of foraging and social behavior by the *Drosophila* neuropeptide Y-like system. *Neuron* 39:147–161
- Wu LJ, Sweet TB, Clapham DE (2010) International union of basic and clinical pharmacology. LXXVI. Current progress in the mammalian TRP ion channel family. *Pharmacol Rev* 62:381–404
- Xiang Y, Yuan Q, Vogt N, Looger LL, Jan LY, Jan YN (2010) Light-avoidance-mediating photoreceptors tile the *Drosophila* larval body wall. *Nature* 468:921–926
- Xiao R, Xu XZ (2009) Function and regulation of TRP family channels in *C. elegans*. *Pflügers Arch* 458:851–860
- Xiao R, Xu XZ (2011) *C. elegans* TRP channels. *Adv Exp Med Biol* 704:323–339
- Xiao R, Zhang B, Dong Y, Gong J, Xu T, Liu J, Xu XZ (2013) A genetic program promotes *C. elegans* longevity at cold temperatures via a thermosensitive TRP channel. *Cell* 152:806–817
- Xu XZ, Sternberg PW (2003) A *C. elegans* sperm TRP protein required for sperm-egg interactions during fertilization. *Cell* 114:285–297
- Xu XZ, Li HS, Guggino WB, Montell C (1997) Coassembly of TRP and TRPL produces a distinct store-operated conductance. *Cell* 89:1155–1164
- Xu J, Somborger AT, Lee JK, Shen P (2008) *Drosophila* TRPA channel modulates sugar-stimulated neural excitation, avoidance and social response. *Nat Neurosci* 11:676–682
- Xue T, Do MT, Riccio A, Jiang Z, Hsieh J, Wang HC, Merbs SL, Welsbie DS, Yoshioka T, Weissgerber P, Stolz S, Flockerzi V, Freichel M, Simon MI, Clapham DE, Yau KW (2011) Melanopsin signalling in mammalian iris and retina. *Nature* 479:67–73
- Yan Z, Zhang W, He Y, Gorczyca D, Xiang Y, Cheng LE, Meltzer S, Jan LY, Jan YN (2013) *Drosophila* NOMPC is a mechanotransduction channel subunit for gentle-touch sensation. *Nature* 493:221–225
- Zhang Y, Hoon MA, Chandrashekar J, Mueller KL, Cook B, Wu D, Zuker CS, Ryba NJ (2003) Coding of sweet, bitter, and umami tastes: different receptor cells sharing similar signaling pathways. *Cell* 112:293–301
- Zhang S, Sokolchik I, Blanco G, Sze JY (2004) *Caenorhabditis elegans* TRPV ion channel regulates 5HT biosynthesis in chemosensory neurons. *Development* 131:1629–1638
- Zhang HJ, Anderson AR, Trowell SC, Luo AR, Xiang ZH, Xia QY (2011) Topological and functional characterization of an insect gustatory receptor. *PLoS One* 6:e24111
- Zhang W, Yan Z, Jan LY, Jan YN (2013a) Sound response mediated by the TRP channels NOMPC, NANCHUNG, and INACTIVE in chordotonal organs of *Drosophila* larvae. *Proc Natl Acad Sci U S A* 110:13612–13617
- Zhang YV, Ni J, Montell C (2013b) The molecular basis for attractive salt-taste coding in *Drosophila*. *Science* 340:1334–1338
- Zhang YV, Raghuvanshi RP, Shen WL, Montell C (2013c) Food-experience induced taste desensitization modulated by the *Drosophila* TRPL channel. *Nat Neurosci* 16:1468–1476
- Zhong L, Bellemer A, Yan H, Honjo K, Robertson J, Hwang RY, Pitt GS, Tracey WD (2012) Thermosensory and non-thermosensory isoforms of *Drosophila melanogaster* TRPA1 reveal heat sensor domains of a thermoTRP channel. *Cell Rep* 1:43–55