

A Face-Like Structure Detection on Planet and Satellite Surfaces Using Image Processing

Kazutaka Kurihara¹, Masakazu Takasu², Kazuhiro Sasao³, Hal Seki⁴,
Takayuki Narabu⁵, Mitsuo Yamamoto⁶, Satoshi Iida⁷, and Hiroyuki Yamamoto⁸

¹ National Institute of Advanced Industrial Sci. and Tech.

qurihara@gmail.com

² teamLab. INC

takasu@team-lab.com

³ Nico-TECH

k.sasao@gmail.com

⁴ Georepublic Japan

hal@georepublic.de

⁵ NTT DATA CCS CORPORATION

tnarabu@nttdata-ccs.co.jp

⁶ Denso IT Laboratory, Inc.

miyamamoto@d-itlab.co.jp

⁷ Nico-TECH

nyampire@gmail.com

⁸ DENSO CORPORATION

hyamamyto1981@gmail.com

Abstract. This paper demonstrates that face-like structures are everywhere, and can be detected automatically even with computers. Huge amount of satellite images of the Earth, the Moon, and the Mars are explored and many interesting face-like structure are detected. Throughout this fact, we believe that science and technologies can alert people not to easily become an occultist.

Keywords: Face detection, google map, NASA.

1 Introduction

"Face-like" structures have been found in many provinces on the earth or other stars [5][2]. They are rocks or other geographical structures that look like a human face.



Fig. 1. Face on Mars ©Google

Because it is quite rare for such shapes to be made without artificial efforts, people tend to think that they derived from such as unidentified ancient civilizations or space aliens.

One of the most popular examples of face-like structures is "Face on Mars" (Figure 1) [5]. Some people say that is an ancient ruin made by Martians, and other people say that is an artifact made by human beings. This mysterious face has been inspired many sci-fi stories [1][3], even after it turned out just an optical illusion by later analyses in detail.

Our goal of this research is to demonstrate that such face-like structures are everywhere, and can be detected automatically even with computers. Throughout this fact, we believe that science and technologies can alert people not to easily become an occultist.

2 Related Work

Onformative¹ shows a similar idea in 2013, but our project is original as the upload date of a Youtube video² shows that we demonstrated our early result in 2010. In addition our project includes exploration of not only the Earth, but also the Moon and Mars.

3 System Description



Fig. 2. Positive examples for training

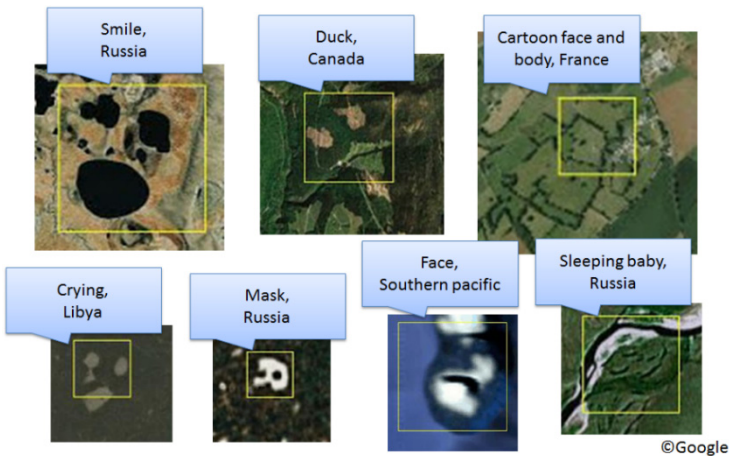


Fig. 3. Example results ©Google

¹ <http://www.onformative.com/lab/googlefaces/>

² <https://www.youtube.com/watch?v=ooKFEmE6JXQ>

3.1 Prototype #1 for the Earth Surface

The object detector of OpenCV with Haar-like features was used to detect face-like structures. This was a commonly used classifier to detect human faces. Since features of face-like structures such as Figure 1 were slightly different from those of original human faces, we have trained our classifier with some simplified illustrations of human faces like Figure 2 as positive examples.

In 2010, we collected thousands of satellite images per day using Google Static Map API [4] and applied our classifier³. Figure 3 shows some examples of our results.

With this prototype, we learned that our detection result included many false positives: face-like clouds, and simple mis-recognitions that were not recognized as human-faces with human cognition, and need some improvements to refine detection algorithm.

3.2 Prototype #2 for the Mars and the Surfaces

We developed our prototype #2 as a project for International Space App Challenge hosted by NASA⁴. The major functional updates are (1) applying multiple detection algorithms in parallel, and (2) applying the detector to the Mars and the Moon surfaces that has less obstacles such as clouds.

Applying Multiple Detection Algorithms in Parallel

We applied three algorithms in parallel to our face detector: OpenCV Haar-like feature detection, Anime face detection[6], and Brightness Binary Feature[7][8]. 50 instances of Windows Azure were used for the computation.

Applying Detector to Mars and Moon Surfaces

We explored face-like structures from 11,829,761,106 pixels, including 10,059,979,678 pixels on the Mars surface, and 533,491,975 pixels on the Moon surface, and 1,236,289,453 pixels of others, provided by NASA Space App Challenge.



Fig. 4. “Grey Aliens” on the Moon ©NASA

³ <https://sites.google.com/site/geofaceproject/>

⁴ We won the third place award in the Tokyo local competition.
<http://marproject.org/>

Results

Figure 4 shows a detection example that looks like a famous alien called “Grey Aliens” [9]. This structure is located on the south pole of the moon [10]. We could find many face-like structures in the polar area because the incidence angle of sunlight was smaller in high latitude and inside of craters were mostly dark with shadows. Other examples of faces on the south and north poles of the moon were shown in Figure 5.

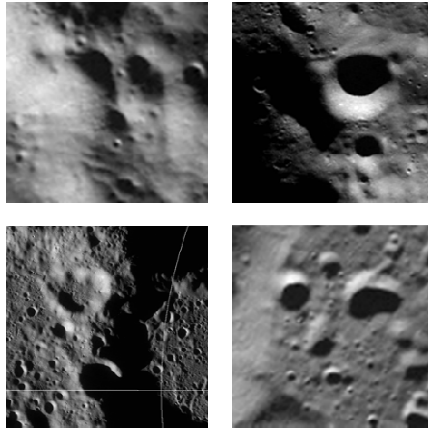


Fig. 5. Face-like structures on the south and north pole of the Moon

4 Conclusion and Future Work

In this paper we demonstrated that face-like structures are everywhere and can be detected automatically on varieties of star surfaces, even with computers. Our next step is to manage our web service that allows people to vote “face candidates” to refine automatic detection results and obtain better and interesting face-like structures with collaborative intelligence.

References

1. Hoagland, R.C.: The Monuments of Mars: A City on the Edge of Forever. Frog Books (1987)
2. <http://ryukyushimpo.jp/news/storyid-2333-storytopic-5.html>
3. Asuka, A., Mikami, T.: Messiah, a Mystery of Lost Face on Mars. Gakusyu Kenkyusya (2002)
4. <https://developers.google.com/maps/documentation/staticmaps/>
5. [http://en.wikipedia.org/wiki/Cydonia_\(region_of_Mars\)](http://en.wikipedia.org/wiki/Cydonia_(region_of_Mars))
6. <http://ultraist.hatenablog.com/entry/20110718/1310965532>
7. Huang, C., et al.: High-Performance Rotation Invariant Multiview Face Detection. IEEE Trans. Pattern Anal. Mach. Intell. 29(4), 671–686 (2007)
8. <http://libccv.org/>
9. http://en.wikipedia.org/wiki/Grey_alien
10. http://wms.lroc.asu.edu/lroc_browse/view/SP_Mosaic