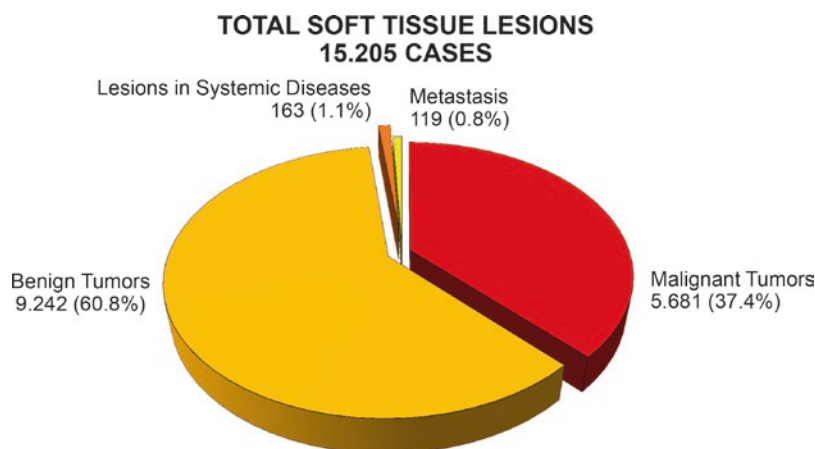


Epidemiology of Soft Tissue Lesions

Piero Picci



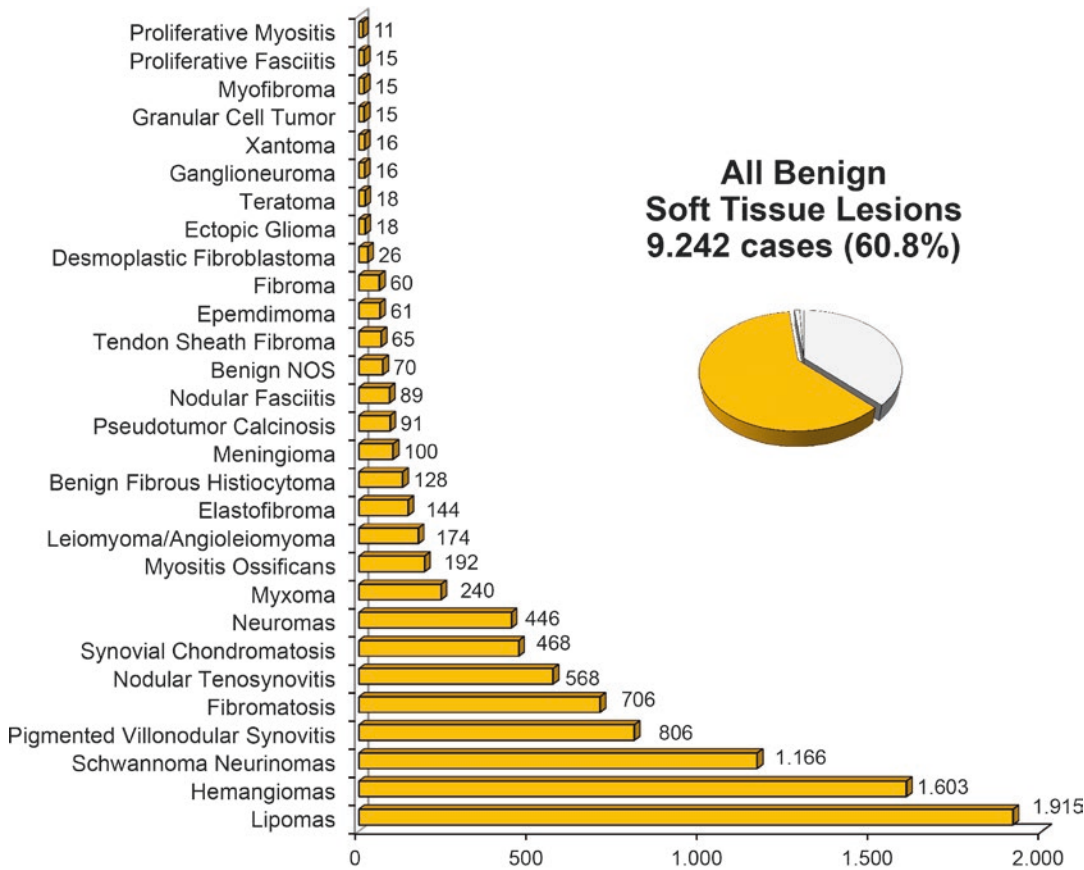
1900-2017 - Istituto Ortopedico Rizzoli - Laboratory of Experimental Oncology - Section of Epidemiology - Bologna - Italy

Soft tissue tumors (STT) are a heterogeneous group of benign and malignant processes. Some are assumed reactive, and others are clearly neoplastic. These lesions account for less than 4% of all tumors in adult patients, and for 7–10% of all

tumors in pediatric patients. More than 99% of STT are benign, and the incidence of malignant STT is about 4–5 times that of malignant tumors arising from bone.

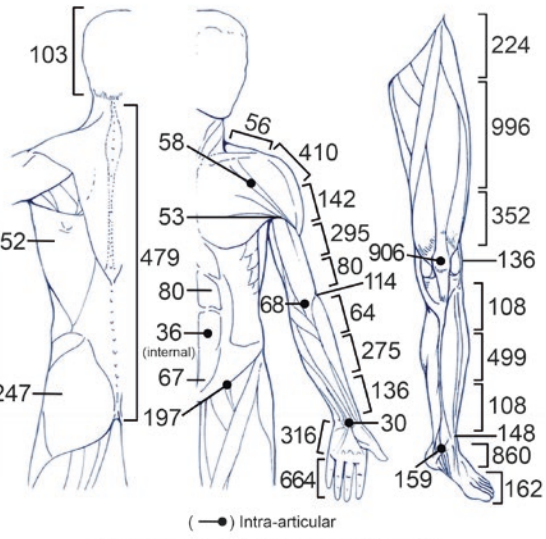
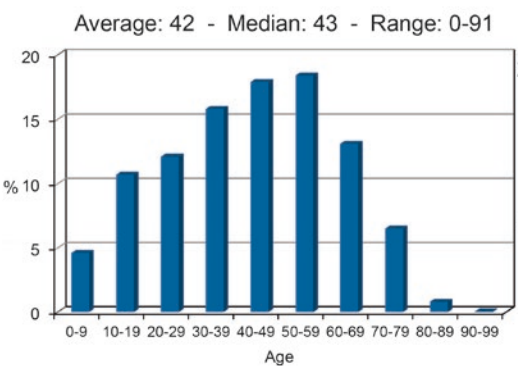
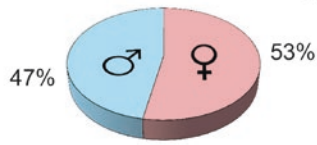
The rarity of STT causes problems with respect to diagnosis, grading, or optimal therapeutic approach. Over the last few decades, there have been significant changes in diagnostics and treatment of STT. Several developments in the field of radiology, pathology, and surgery have significantly changed the way STT are currently diagnosed and treated, improving prognosis and quality of life for patients with these rare diseases.

P. Picci (✉)
 Laboratory of Experimental Oncology, IRCCS
 Istituto Ortopedico Rizzoli, Bologna, Italy
 I.S.G. Italian Sarcoma Group, Bologna, Italy
 e-mail: piero.picci@italiansarcomagroup.org



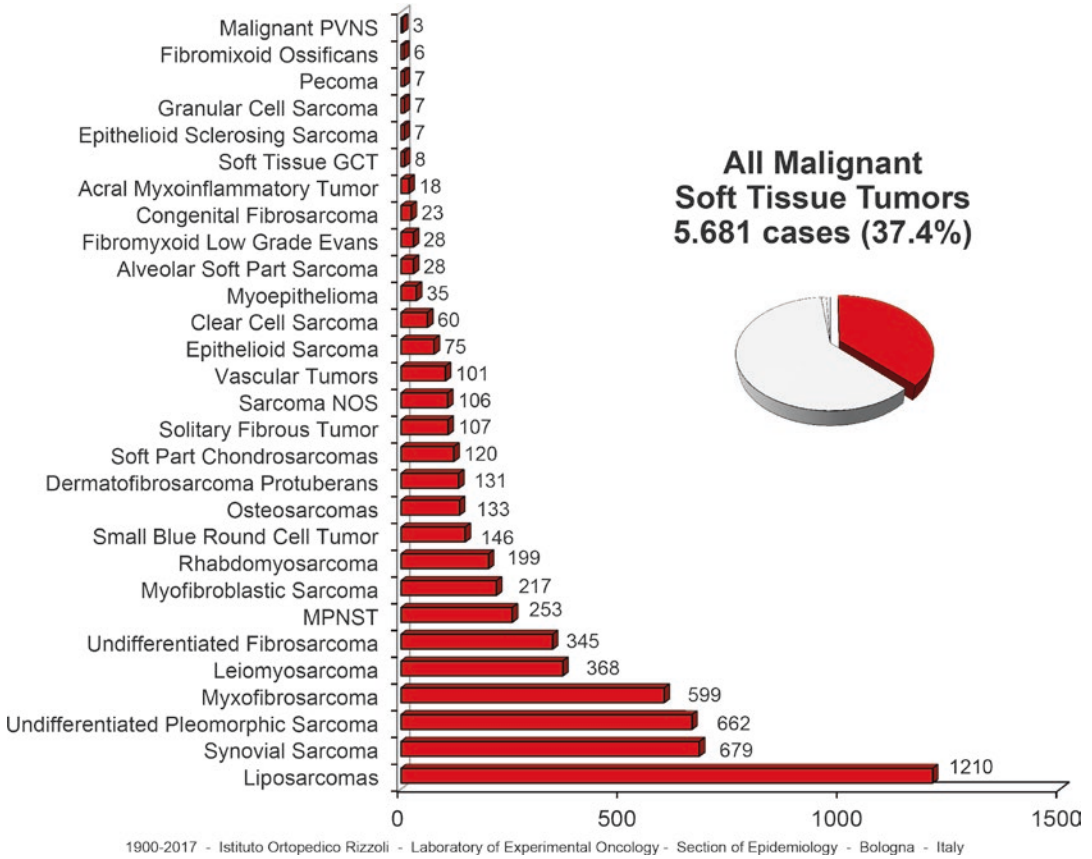
1900-2017 - Istituto Ortopedico Rizzoli - Laboratory of Experimental Oncology - Section of Epidemiology - Bologna - Italy

All Benign Soft Tissue Lesions 9.242 cases (60.8%)

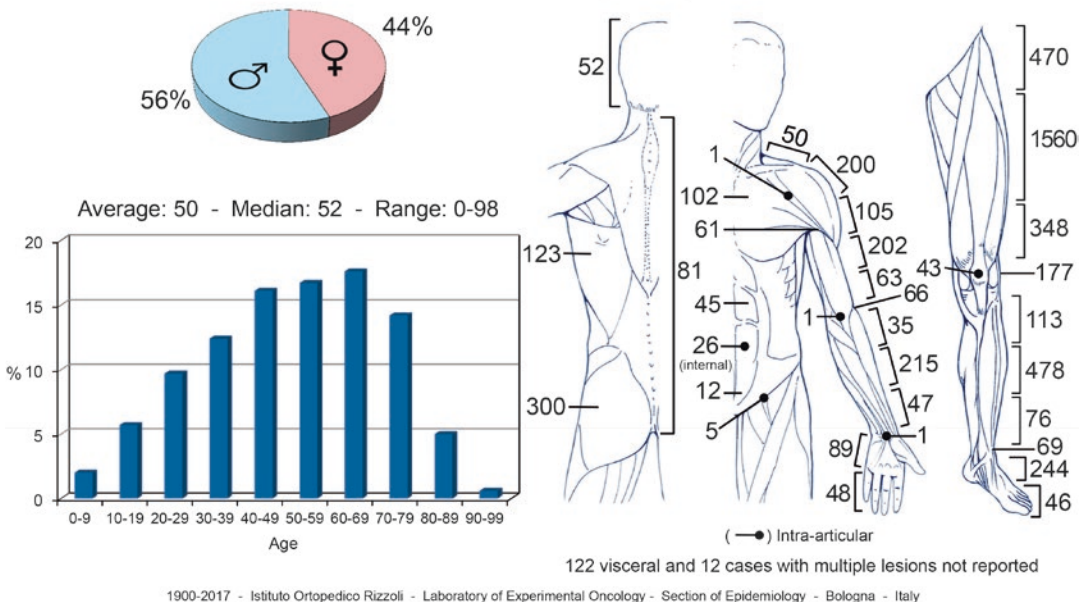


131 cases with multiple lesions not reported

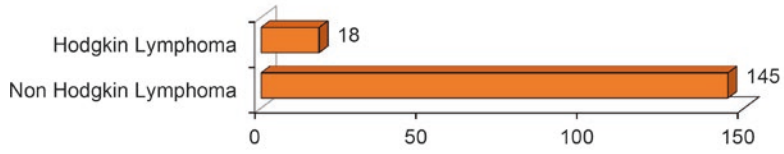
1900-2017 - Istituto Ortopedico Rizzoli - Laboratory of Experimental Oncology - Section of Epidemiology - Bologna - Italy



All Malignant Soft Tissue Tumors 5.681 cases (37.4%)

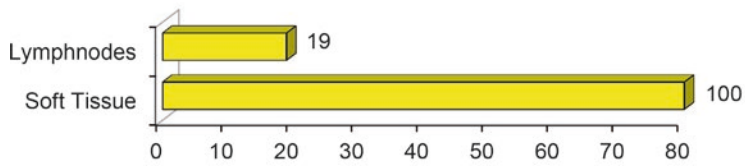
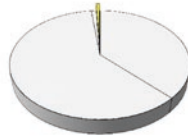


Systemic Lesions in Soft Tissue 163 cases (1.1%)



1900-2017 - Istituto Ortopedico Rizzoli - Laboratory of Experimental Oncology - Section of Epidemiology - Bologna - Italy

Metastasis in Soft Tissue 119 cases (0.8%)



1900-2017 - Istituto Ortopedico Rizzoli - Laboratory of Experimental Oncology - Section of Epidemiology - Bologna - Italy