

Chapter 9

Web Map Application to Support Spatial Planning, Decision-Making and Transition Toward Climate-Smart Landscapes in the Taita Hills, Kenya



Tino Johansson, Janne Heiskanen, Mika Siljander and Petri Pellikka

Abstract There is a growing demand for geospatial technologies and skills in Kenya due to the ongoing devolution of government to the county level, development of GIS-based National Land Management Information System, and digitalization of information and maps to databases. Furthermore, the adaptation of agricultural production to the impacts of climate change, and its transition toward climate-smart landscape approach require support from geospatial technologies to stakeholders to sustainably manage land use interactions, such as soil, water, and nutrients along with agro-forestry, livestock, husbandry, and forest and grassland utilization at landscape level. A simple and visual Multifunctional Agricultural Landscape Mosaic (MALM) Story Map and Web Application was developed to support this transition and adoption of open access geospatial technology among the universities, government organizations, and NGOs in Kenya. The thematic content of the web application was designed to support climate change adaptation action planning in the target area with a focus on water resources, conservation agriculture, agro-forestry for the smallholder farms, and insect pest management. This chapter describes the emerging challenges of advancing geospatial technologies in Kenya, presents the results of a feasibility study of MALM and discusses its potential in supporting spatial planning and decision-making in climate change adaptation in the Taita Hills, southeast Kenya.

Keywords Geospatial · Web mapping · Spatial planning · Landscapes · Climate Kenya

T. Johansson (✉) · J. Heiskanen · M. Siljander · P. Pellikka
Department of Geosciences and Geography, University of Helsinki, Helsinki, Finland
e-mail: tino.johansson@helsinki.fi

J. Heiskanen
e-mail: janne.heiskanen@helsinki.fi

M. Siljander
e-mail: mika.siljander@helsinki.fi

P. Pellikka
e-mail: petri.pellikka@helsinki.fi

© Springer Nature Switzerland AG 2019
K. Koutsopoulos et al. (eds.), *Geospatial Challenges in the 21st Century*,
Key Challenges in Geography, https://doi.org/10.1007/978-3-030-04750-4_9

9.1 Challenges of Advancing Geospatial Technologies in Kenya

Advances in Geospatial Technologies have revolutionized the delivery of reliable and timely datasets and information about Earth. Open-source software, web mapping applications and data repositories gradually expand the reach of computer-based models and geospatial information to the Global South and help bridge the global digital divide in terms of access to, use of and impact of geoinformation on, e.g., monitoring climate and land change, and assessing situations during extreme events, as well as on planning and decision-making. In recent years, a wide range of web-based decision support services using mapping and GIS have been developed for environmental purposes, such as watershed management (Zhang et al. 2015), integrated pest management (Damos 2015), pest infestation (Lajis et al. 2016) and ecosystem services (Tayyebi et al. 2016). Transition to geospatial cloud computing removes the need to purchase or maintain in-house servers, and makes customized use of web-based GIS instantly and widely available (Cope et al. 2017) which can increase geospatial technology adoption in countries with limited economic resources for software and data storage.

Despite the accelerating global trend in the use of geoinformation, many countries in the Global South lack behind in this process mainly due to inadequate human capacity with Geospatial skills and information networks, especially in the rural areas. Kenya, which is a lower middle-income country and a leading trade and mobile technology hub in East Africa, provides an interesting case study for assessing the challenges and opportunities of advancing geospatial technologies in the twenty-first century. In Kenya, the transition from traditional paper-based mapping and planning to digital information-based technology in the higher education institutions, county governments, ministries, companies, non-governmental organizations, and extension services currently takes place at accelerating speed. This transition will have a huge impact in the Kenyan economy through increased availability and efficiency of geospatial information use in decision-making, developing services for ICT-based society and customers, and in generating businesses and jobs in this growth sector.

Many ongoing projects in Kenya underline and indicate the growth of geospatial technologies in both public and private sectors. During the First Medium Term Plan in 2008–2012 the Kenyan Government managed to develop 10% of the GIS-based National Land Management Information System which will provide a digitalized Land Registry once finalized. Geo-referenced land titles register will be more transparent, efficient and decentralized than the existing printed documentation system. The development of e-commerce in Kenya identifies GIS maps for all inhabited areas during the Second Medium Term Plan in 2013–2017. GIS also plays a key role for Kenya's infrastructure development as digitization and mapping the electricity grid network into a GIS utility database will be finalized by the year 2017, which makes maintenance and monitoring more efficient and effective and as a result will ensure more stable delivery of electricity across the country.

Demand and use of geospatial technologies, as well as the need to develop geospatial skills, are also increasing through the ongoing process of devolution of government which is implemented under the new Constitution of Kenya 2010. It gives powers of self-governance to the established country governments, such as the Taita Taveta County in southeast Kenya. The counties need to take up and facilitate many functions and responsibilities that earlier were under the national government and sectoral ministries. Availability of and access to geoinformation are critically important to these county governments, which adopt full responsibility for local natural resources management and food security under the new realities of climate change. The new Constitution's clause on Environment and Natural Resources further inform that the State will establish systems of environmental impact assessment, environmental audit and monitoring of the environment which will certainly increase the demand to use of digital geoinformation at the county level. However, the counties staff and other authorities require geospatial skills and knowledge to fully utilize such digital resources in, e.g., land management and planning.

The higher education sector in Kenya has not managed to keep pace in the provision of degree programmes on GIS, remote sensing and geoinformatics which would ensure the availability of high-quality professionals with geospatial skills to the labor market and business development. In Kenya, Master's degree training in geoinformatics, GIS and/or remote sensing is only provided in the capital city Nairobi by the University of Nairobi and the Jomo Kenyatta University of Agriculture and Technology. This lack of training opportunities in geospatial skills, which already are and will increasingly be of high demand in the counties as transformation into digital/information society proceeds, causes regional disparity and uneven capacity development in Kenya. Rural–urban migration has been the only option for young graduate students and in-service training staff to study geoinformatics in the country, assuming that they can afford the higher living expenses in the capital city. The University of Helsinki with support from the Ministry for Foreign Affairs of Finland launched a new M.Sc. degree programme in geoinformatics (www.helsinki.fi/en/projects/taitagis) in cooperation with the Taita Taveta University to support regional equality in geospatial and information technology skills and capacity in Kenya in the year 2018.

Political support to the modernization of higher education curricula is present and indicated in the long-term national policy called Kenya Vision 2030 (Government of the Republic of Kenya 2007) which encourages public and private universities to expand enrollment with emphasis on science and technology. One of the major goals of the Kenya Vision 2030 is to make the country a regional center of research and development of new technologies in Africa. The Universities (Amendment) Bill to the Senate in July 2014 proposes the establishment of public universities in each county to promote learning, knowledge, research, and innovation. The Bill states that the objectives of university education in Kenya will among other things advance knowledge through teaching, scientific research and investigation, support and contribute to the national economic and social development, disseminate the

outcomes of the research conducted by the university to the general community, facilitates lifelong learning through adult and continuing education, and promotes gender balance and equal opportunity among students and employees (Government of the Republic of Kenya 2014). These policy statements lay the basis for the future advancement of technologies, such as geospatial that will support scientific research, decision-making and education in various disciplines in the country.

However, emerging challenges for the development of information and communication technologies, e.g., slow adoption of these services by educational, social and government institutions, lack of harmonized data management system, and inadequate information resource centers in rural areas may hamper their utilization (Government of the Republic of Kenya 2013). Sharing geo data within and across organizations has remained very limited so far. A detailed country-wide assessment of the challenges of advancement of geospatial technologies is not available, but being part of modern information and communication technologies (ICT) many of the identified challenges for their development may also be applied to geospatial technologies in Kenya.

The Second Medium Term Plan 2013–2017 of the Kenya Vision 2030 (Government of the Republic of Kenya 2013) identifies the poor state of infrastructure and equipment for research in higher education and training as an emerging issue and a challenge for the development of science, technology, and innovations. Web-based applications, however, may help overcome most of the infrastructure-related problems in geospatial technology adoption. This document further states that the emerging issues and challenges for the development of ICT are inadequate human capacity for research and development of ICT, slow adoption of ICT services by learning, social and government institutions, lack of harmonized data management system, inadequate information resource centers in rural areas, and low ICT skills. Nyangau (2014) points out that Kenya's higher education system should pay more emphasis on supporting the country's economic growth and development by "preparing well-educated highly trained workforce for industrialization, modernization and global citizenship". He summarizes that despite its rapid expansion Kenya's higher education system faces a number of serious challenges, such as curricula that are not responsive to the needs of modern labor market, lack of basic laboratory supplies and equipment, poorly equipped libraries and ever-growing demand of higher education. Innovative, user-friendly web map application that addresses some of the key challenges of advancing geospatial technologies in Kenya has been developed under the Adaptation for Food Security and Ecosystem Resilience in Africa project coordinated by the International Centre of Insect Physiology and Ecology in Nairobi, Kenya. The web map application will be described in detail later in this article.

9.2 Geospatial Technologies to Support Transition Toward Climate-Smart Landscapes

The experienced and projected impacts of climate change on agriculture in Kenya generate a major development challenge. Approximately 98% of the country's agricultural systems are rain-fed making them highly susceptible to increased variability of rainfall and other impacts of climate change. Agriculture contributes to 25% of Kenya's GDP and accounts over 65% of exports, so any negative trend in production will directly affect food security, employment, economic growth and poverty (Government of the Republic of Kenya 2017). To address these challenges, the country has recently launched the Kenya National Climate-Smart Agriculture Programme 2017–2026 which is expected to guide actions that are needed to transform and reorient agricultural systems to support food security under the new realities of climate change. Lipper et al. (2014) describe climate-smart agriculture as an approach which differs from business-as-usual approaches by emphasizing the capacity to implement flexible, content-specific solutions which are supported by innovative policy and financing actions. The aim of climate-smart agriculture systems is to increase farmers' adaptive capacity, resilience and resource use efficiency in agricultural production systems.

Emphasis on integrated land and water management approaches in climate change adaptation and mitigation has generated a concept of climate-smart landscapes (CSL) which includes a variety of field and farm practices in different land and tenure types that support both adaptation and mitigation objectives. The CSL approach aims at managing land use interactions, such as soil, water, and nutrient management along with agro-forestry, livestock, husbandry, and forest and grassland management techniques at landscape level. The key is to maintain high level of diversity: (1) to reduce risks of production and livelihood losses from erratic and changing climatic conditions, (2) to utilize certain areas of the landscape strategically as emergency food, feed, fuel, and income reserves, and (3) to sustain minimally disturbed habitats, such as forests, within the landscape mosaic that also serve as carbon stocks, and secure ecosystem functions (Scherr et al. 2012).

The successful implementation of climate-smart landscapes requires functional interactions of economic, ecological and social processes in the negotiated spaces where a diverse set of stakeholders identify, negotiate and manage the impacts of different land uses and management on other land uses and users at multiple scales in the landscape (Scherr et al. 2012; Minang et al. 2015). Geospatial technologies can be used in the facilitation of negotiation process among the stakeholders as these enable overlay visualization, queries, and other functionalities which help in understanding different landscape level phenomena and mapping risks.

In the Adaptation for Food Security and Ecosystem Resilience in Africa (AFE-RIA) project (<http://chiesa.icipe.org/index.php/aboutaferia>) funded by the Ministry for Foreign Affairs of Finland, a web map application, Multifunctional Agricultural Landscape Mosaic (MALM), was developed. It consists of authoritative maps compiled from scientific findings, stakeholder observations and prioritized community-

based climate change adaptation actions to support current and future land use planning and decision-making for gradual transition to climate-smart landscapes in the Taita Hills, Kenya. The Coast Region, where the Taita Taveta County is located, has over time experienced third highest absolute poverty levels in the country. The Human Development Index (0.527) in the Coast Region was slightly below the national average (0.561) in 2009. (Friedrich Ebert Stiftung 2012). Taita Taveta County's vicinity to the coastline and connectivity with Mombasa has in recent years resulted in huge infrastructure development projects by the government, such as the standard gage railway between Nairobi and Mombasa and tarmac road establishment between Voi town and Taveta international border. These huge projects have impacts on the environment and communities located at the affected areas and surroundings. These large-scale changes in land use, housing, and industry area development, impact to ecology and wildlife, and increased human-wildlife conflicts, call for experts able to handle geospatial data for regional planning. Spatial information used in land use planning and environmental impact assessment for these infrastructure projects has so far been only available in the form of printed map sheets at selected authorities' and constructors' offices. Availability of, and access to such key information to support decision-making has been limited and negatively affected the transparency of land demarcation processes.

9.3 MALM Web Map Application to Support Spatial Planning and Decision-Making

The MALM web map combines authoritative maps with narrative text and images to tell a story on climate change adaptation themes, such as prioritized sites/locations for adaptation actions, drip irrigation, roof rainwater harvesting, farm forestry, conservation agriculture, and integrated pest management for certain staple and cash crops. The layers visualized include a summary of the observed land use/land cover changes, projections of future climate and prediction models of land use/land cover, and suitability analyses of intervention, thus providing an interface for local, regional and national users for communicating current and projected impacts of climate and land change. The web map will support land use planning and identification of key areas for climate change mitigation and adaptation actions in the Taita Hills, but may also be used in education for spatial citizenship (Jekel et al. 2015) throughout Kenya.

The geospatial visualizations for MALM include a Story Map and an additional Web App built using Esri ArcGIS Online platform (www.arcgis.com). ArcGIS Online is a cloud-based web-GIS platform to make, search and share web maps, web map applications, and geospatial data.

Using the MALM Story Map and Web App requires only a web browser. However, if the involved projects stakeholders want to prepare their own online services, they need to register to ArcGIS Online. ArcGIS Online can be accessed for free through a public account, which is not associated with any organization but offers a limited set

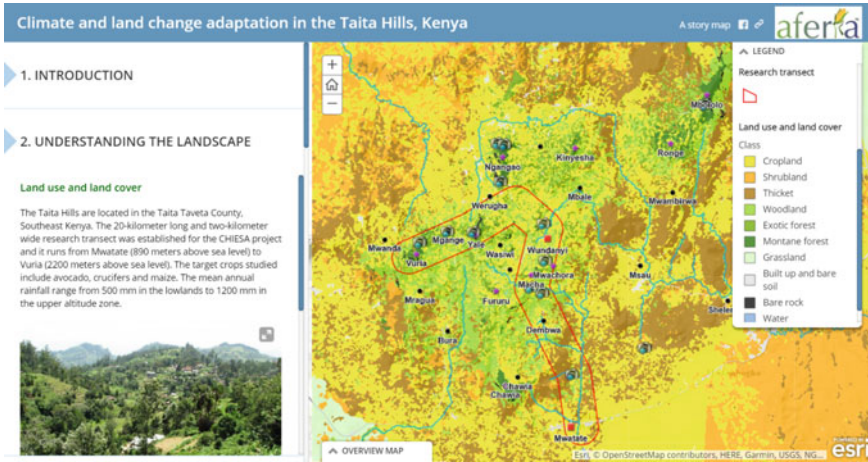


Fig. 9.1 An example view of “Climate and land change adaptation in the Taita Hills, Kenya” Story Map showing land use and land cover distribution for the target landscape in the main panel on right and text and images in the expandable panel on left. The Story Map is available online at (<http://arcg.is/1qePWK>)

of functionality. The public account allows users to utilize and create maps, and share maps and apps with others, and they can also add simple geospatial data in vector format to their maps. The organizational account provides more functionality and options for adding data to maps. As many of the AFERIA project outputs are in raster format, the organizational account is required for making the MALM visualizations.

Story Maps are one type of ArcGIS Online configurable Web App templates. The Story Map templates enable integrating web maps with text, images, videos and other web content into an interactive narrative (Fig. 9.1). In the selected template, a series of maps are presented with text and other contents in an expandable panel. Sometimes the main panel was replaced by images to improve the storytelling. The story is followed by clicking the titles, which expands the panel and reveals text and other contents. Each web map is prepared separately in the ArcGIS Online and embedded in the story map. In a typical web map, it is possible to pan and zoom the map and examine the content of pop-up windows that can be configured. However, it is also possible to embed Web Apps in the main windows, which enable additional functionality, such as, comparison of two or several maps by using a swipe-tool or spatially linked map comparison windows.

In addition to the Story Map, MALM geospatial visualizations include a basic viewer Web App for studying the MALM geospatial layers with an option for selecting visible layers and base map shown in the background, and including basic tools for measuring distance, area and position, and printing and sharing map views (Fig. 9.2). In contrast to Story Map, the Web App enables simple overlay analysis of the layers and preparation of personal map views.

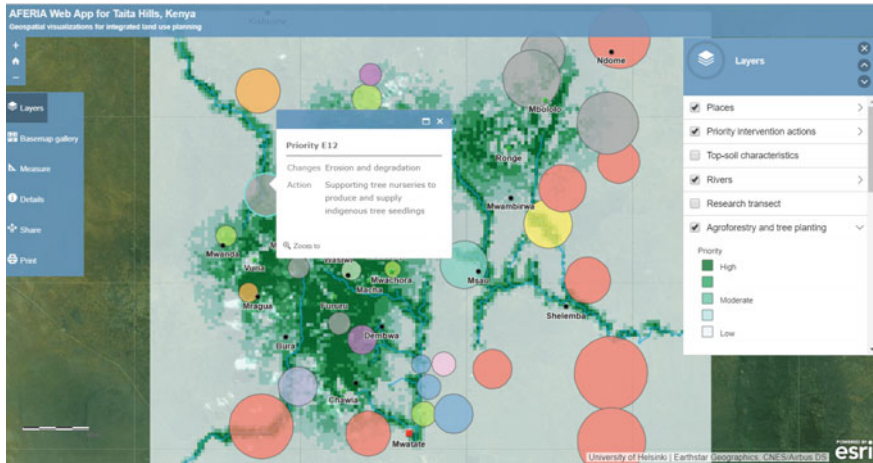


Fig. 9.2 An example view of AFERIA Web App for the Taita Hills, Kenya with results of the participatory priority intervention action mapping and results of the agro-forestry and tree planting priority area mapping. The Web Map application is available online at (<http://arcg.is/0GOf5S>)

The targeted user groups of the Story Map and Web App includes all the stakeholders of the project. The main purpose of Story Map is to disseminate scientific findings and recommendations to a wide range of stakeholders including farmers in the Taita Hills, local authorities, CBOs, NGOs and even the central government implementing the national strategies. The only requirement for using these applications is an internet connection. On the other hand, the Web App is targeted to the users who prefer more interactive display of the geospatial layers and basic tools to support land use planning and for implementing land management interventions.

The MALM applications utilize the remote sensing and GIS data collected and produced during the CHIESA (2011–2015) and AFERIA (2016–2017) projects. During these projects, a 20-km long and 2-km wide research transect was established for the Taita Hills running from Mwatate (890 m a.s.l.) to Vuria (2200 m a.s.l.). Most of the research activities took place in this altitudinal transect. However, for MALM, the area of interest was expanded to better cover the Taita Hills landscape. The work was also supported by the data, such as airborne laser scanning data, gathered by other research projects of the University of Helsinki in the study area.

The most elementary geospatial data by CHIESA and AFERIA projects include satellite image-based land use and land cover (LULC) classification (Pellikka et al. 2018), the results of participatory mapping of the prioritized climate change adaptation action sites, and AFRICLIM 3.0 high-resolution ensemble climate projections for Africa (Platts et al. 2015). LULC layer was used for defining the extent of the study area. It is important for understanding the main landscape patterns such as distribution of agricultural land and remaining forest cover. In addition to LULC layer, the Story Map visualize LULC changes between 2003 and 2011 demonstrating the current trend of agricultural expansion (Pellikka et al. 2018), and the results

of a scenario analysis carried out in AFERIA project to explore alternative ways of responding to the current environmental and societal challenges by the mid-twenty-first century (Capitani et al. 2018).

Participatory selection of climate change adaptation action sites by the stakeholders was part of the process of linking local and scientific knowledge. Data on the prioritized climate change adaptation action sites was collected with participatory GIS methods from the communities and stakeholders, visualized, and shared with the local partners to establish demonstration sites in the most optimal locations (critical areas where actions need to be taken against experienced impacts and negative changes). Representatives from different groups, such as government and county government, NGOs, water users associations, women's self-help groups, and disabled persons groups, actively contributed their observations and experiences in the areas and sites where urgent actions were needed. Later, the observations were digitized, converted into a geospatial layer and embedded in the MALM visualizations.

AFRICLIM 3.0 provides mid-century (2041–2070) climate projections of temperature, rainfall and rainfall seasonality at 1 km spatial resolution (Platts et al. 2015). For the Taita Hills, the climate projections predict a hotter future with wetter rainy seasons and drier or similar dry months. The predictions were visualized as changes in the mean annual temperature and rainfall between the baseline (1961–1991) and 2041–2070 period. In order to demonstrate uncertainties in the projections, the predictions based on two different Representative Concentration Pathways (RCPs) are shown and can be compared in the Story Map through the swipe tool. Furthermore, the layers were provided for the whole of Kenya so that users can relate changes in the Taita Hills to the national context.

In order to complement the results of the participatory mapping approach, a GIS-based suitability analyses were used for mapping priority areas for the key AFERIA interventions (i.e., roof rainwater harvesting, drip irrigation, agro-forestry and tree planting, conservation agriculture, and integrated pest management) (Fig. 9.2). The suitability analyses were based on multi-criteria overlay analysis. For each intervention type, a set of evaluation criteria were determined and corresponding decision rules and weights determined and applied to make the final maps. For example, the suitability of agro-forestry and tree planting was mapped based on LULC map to concentrate on agricultural areas, forest connectivity analysis to improve the ecological connectivity between the remaining forest patches, and distance to the rivers was used to support reforestation of the riparian areas. The scientific finding of CHIESA and AFERIA were used in the analyses when possible, particularly for visualizing the key areas for the biological control of maize pests.

Although the main method for accessing MALM geospatial layers is through Story Map and Web App, the geospatial layers, maps, and apps are also accessible through ArcGIS Online. By using the free ArcGIS public account, the stakeholders interested in tailoring their own web maps and applications can make such by combining AFERIA outputs, other public data in ArcGIS Online and their own data. For example, the user might want to combine data collected by GPS device in the field in text or GXP format with one the MALM layers. Data collection using GPS has been included in the GIS capacity development trainings earlier in the project, and

many stakeholders now have such data on their own applications. Making web maps and apps in ArcGIS Online is relatively easy and does not require training in GIS.

As a part of the MALM geospatial visualizations, 1-day capacity development training was organized in the Taita Taveta University in November 2017. In the training, the participants presenting various stakeholders and Taita Taveta University staff assessed MALM Story Map and Web App, and learned how to access geospatial layers through ArcGIS Online and create simple web maps and applications. In addition to introducing the geospatial visualizations, the training aimed to discuss their contribution to climate and land change adaptation and land use planning, and make participants consider how such tools could be used for communicating landscape problems and possible solutions in their own applications. For the users interested in developing their own applications, MALM Story Map and Web App provide examples of the web GIS applications and some of their possibilities, and hence, have an impact beyond the Taita Hills project area.

9.4 Feasibility Study of the MALM for Spatial Decision Support in the Taita Hills

A feasibility study of the MALM Story Map and Web Application was carried out during the 1-day training in the Taita Taveta County, Kenya with 20 participants including local stakeholders and Taita Taveta University students and staff members. None of the participants had previous knowledge of Story Maps or Web Apps and only a few participants had used ArcGIS Online before. They came from various backgrounds from different organizations and most of them had no previous GIS knowledge. The assessment was based on a questionnaire that was filled in during the training. The questionnaire was structured in a *Four Way Analysis* manner so that the questions measured usability of the MALM Story map and the Web App for decision support. Questions were structured so that firstly respondent's basic spatial skills were investigated and then the ability to recognize spatial patterns and relations were tested. In the first section of the assessment, two specific climate change adaptation actions for the climate change impacts on rainfall (roof rainwater harvesting; Fig. 9.3 and drip irrigation; Fig. 9.4) had to be identified from the MALMs narrative texts and images. In the second part, respondents had to place the phenomena in the context by using the authoritative maps and finding out the locations where these two adaptation actions mainly take place in the Taita Hills. In the third part participants examined the qualities of the objects by assessing how the two adaptation actions are similar or different, and in the fourth part, space-time relationships between the objects and/or event were investigated. In addition, three questions were asked about the overall content of the MALM: (1) did the MALM visualizations improve your understanding on the landscape, landscape problems, and potential interventions; (2) how important were the maps for answering the questions; and (3) how important was the text in the Story map for answering the questions?

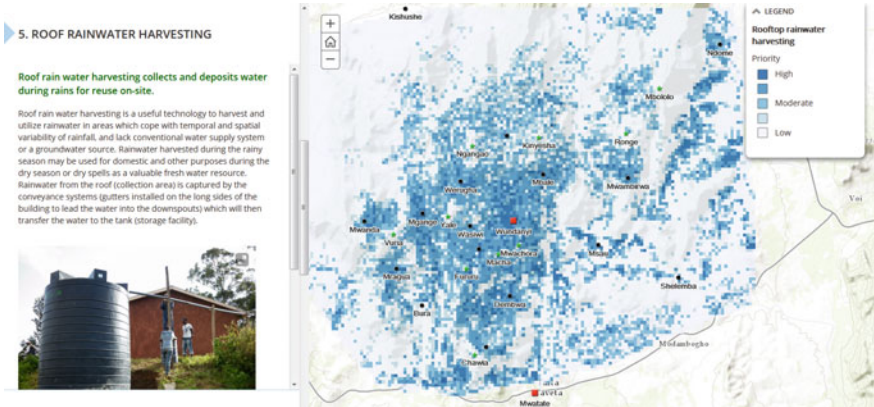


Fig. 9.3 Story map for prioritized roof rainwater harvesting action sites in the Taita Hills, Kenya

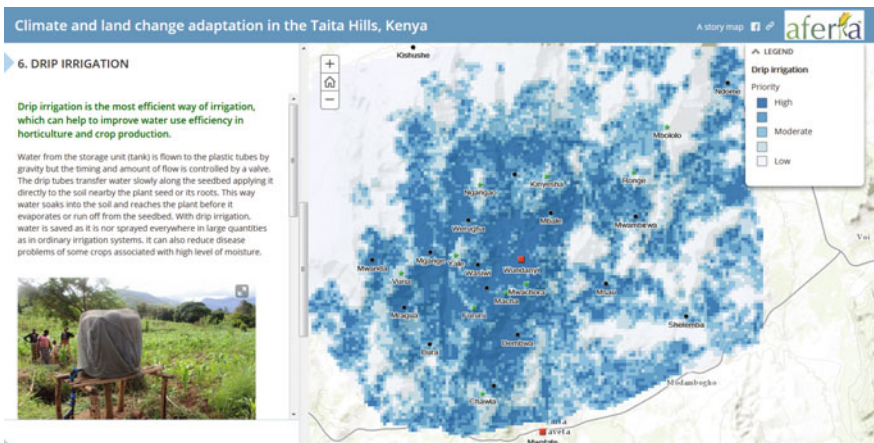


Fig. 9.4 Story map for prioritized drip irrigation action sites in the Taita Hills, Kenya

The results of the feasibility study show that despite the respondents’ lack of prior experience in geospatial technology, the MALM web mapping application enabled them to explore the data, select layers and investigate the phenomena at different scales. The results indicate that the MALM helps enhance users’ geospatial thinking in five main areas:

1. **Identify the entity/event:** MALM provides two specific adaptation actions for the climate change impacts on rainfall. What are these two adaptation intervention actions? What are two adaptation intervention actions for the climate change impacts on rainfall?

Our result shows that 14 out of 20 of the respondents found drip irrigation and roof rainwater harvesting as the two specific adaptation actions for the climate

change impacts on rainfall. Five participants selected roof rainwater harvesting, agroforestry, and tree planting, and one participant selected roof rainwater harvesting and setting-up roof catchments and tanks as the adaptation actions.

2. ***Place the phenomena in the context:*** *Where are these two adaptation actions mainly located and what are the main geographical characteristics of these locations?*

Our result shows that respondents' answers varied a lot and some answered that adaptation actions are located in the Taita Hills, Taita Taveta County. However, in this question we were looking for more specific locations where the adaptation actions have been prioritized to take place which could only be revealed by using the authoritative maps from the MALM. From these maps, some respondents only identified if the action took place in the highland or in the lowland areas. Luckily, most of the respondents interpreted more carefully the MALM maps and they mentioned the names of the subcounties or villages where the actions will mainly be located in the Taita Hills. When the main geographical characteristics of two different climate change adaptation action locations were asked, majority of the participants identified from the MALM maps that most suitable areas for the both actions are located at higher altitudes and in areas with higher rainfall. Students also explained that roof rainwater harvesting has higher suitability in areas with more buildings, long distance to the rivers, whereas drip irrigation has high suitability in areas with relatively short distance to the water sources (rivers and streams), cultivated areas and buildings.

3. ***Examine the qualities of the objects:*** *How are these two adaptation actions similar or different, and do these features tend to occur together (have similar or different spatial patterns)?*

Most of the participants answered that the adaptation actions are similar as they are both helping to cope with changes in the reduced amount of rainfall and both actions promote water use efficiency. Respondents answers on how these two adaptation actions are different, point out that they understood well that one action is focused on water collection and storage (rain roof water collection), and the other is focused on efficient utilization of water for irrigation as a scarce resource (drip irrigation). Majority of the respondents mentioned the difference in spatio-temporal patterns as rainwater is harvested during the rainy seasons, while drip irrigation is used in the dry season.

4. ***Space-time relationships between the objects and/or event:*** *Open the Story map and study its content on "Climate change projections". How precipitation is projected to change in the Taita Hills; Where are the projected changes highest/lowest, and What areas are not impacted?*

From the MALMs narrative texts and maps, most of the respondents found out that according to the climate change projections the mean annual precipitation in the Taita Hills is expected to increase. In addition, the wettest quarter of the year will get wetter, whereas the driest quarter of the year will get drier. Highest precipitation change areas were identified from the map and most of the respondents identified the

southern parts of the Taita Hills to be the area having a low change in precipitation. Some of the respondents analyzed climate change projections at the country level and found out that the highest projected changes are located around the central parts of Kenya and the lowest projected changes are along the western parts of Kenya.

5. ***Content of MALM visualizations: Did MALM visualizations improve your understanding on the landscape, landscape problems and potential interventions; how important were the maps for answering the questions; how important was text in the Story map for answering the questions?***

All respondents agreed that MALM Story Map and Web App improved their understanding on the landscape, landscape problems and potential interventions in the Taita Hills. Most of them found out that the maps provided a practical tool for both understanding and explaining the concept behind the MALM and it can be a useful tool to support spatial decision-making. Respondents also thought that the maps provided a broad visual scientific analysis of the adaptation intervention actions. However, some respondents thought that in the beginning, the maps were a bit challenging to fully understand and to make interpretations out of them. Therefore, in the parts where the maps seemed a bit complex, the text gave students a more detailed explanation of the prioritized climate change adaptation actions.

9.5 Easy-to-Use Web Application to Increase the Uptake of Geospatial Technologies

Use of geospatial technologies, especially open-source software and web mapping applications, in spatial planning and decision-making is a relatively new phenomenon in Kenya. GIS and geoinformation are not used much outside the universities and specific research institutes in the country. Harnessing the geospatial technology potential widely among the established county governments and other key stakeholders involved in planning, managing, monitoring and evaluating agricultural production, water resources, forests, and climate change adaptation and mitigation in Kenya would enhance information sharing across the sector lines of responsible ministries. Digital maps and updated data from repositories would be at hand to the decision makers when needed, not just to those authorities who happen to possess the only printed copy of the out-of-date thematic map of the target area. Unharmonized policies often prevent sustainable management of natural resources and enforcement of rules and regulations for their conservation in Kenya. User-friendly open access geospatial technologies, such as web mapping applications, could provide a solution for more transparent and efficient availability of information for policy-making if adopted widely among the local and national governments. Transition toward climate-smart landscapes requires well-coordinated collaboration among the multiple stakeholders to negotiate, design and manage land use interactions at the landscape level. Availability of information on different land use types, high-resolution climate projections,

and geographical characteristics of the target area at different scales plays a critical role in the success of such negotiations and collaboration.

A simple and visual Multifunctional Agricultural Landscape Mosaic (MALM) Story Map and Web Application was developed in the AFERIA project to support the transition toward climate-smart landscapes and adoption of open access geospatial technology among the universities, government organizations, and NGOs in Kenya. The main principle is to provide a low cost and easy-to-use application for exploring, selecting, visualizing and interpreting geospatial data, without a need to have advanced geospatial skills. However, the application has functionalities which help develop geospatial thinking and generate interest for further learning. The thematic content of the web application was designed to support climate change adaptation action planning in the target area with a focus on water resources, conservation agriculture, agro-forestry for the smallholder farms, and insect pest management for maize, avocado, and crucifers. The objective of this geospatial application is to provide information on prioritized action sites for different interventions and technologies so that the users may use the available information in planning future adaptation actions in the area. Hands-on training was organized for selected end users to develop their basic geospatial skills and to enable them to tailor the application for their own purposes and data sets, which simultaneously develops their geospatial thinking and builds their capacity to adopt geospatial technology. According to the feasibility study targeting a small group of users from the Taita Taveta University and local stakeholder organizations, the application combining authoritative maps and descriptive texts was well received and successfully used in basic tasks requiring geospatial thinking. The feasibility study also showed the potential of a web map application to advance geospatial skills among non-experienced users and to facilitate access to geospatial data which supports decision-making. After the initial launch of the MALM web application, a series of promotional events and advertisement were organized to attract a growing number of users in the coming years in the Taita Taveta County and elsewhere in Kenya. We expect the application to support and be of use for those researchers, teachers, and authorities who continue to implement the Kenya National Climate-Smart Agriculture Programme 2017–2026.

One of the assets of MALM is that in addition to laptop and desktop computers, it can be operated with smartphones, which will expand its reach to a number of users who do not have computers available. This removes the obstacles created by the poor state of infrastructure and equipment in research and education. Smartphones are widely utilized by the Kenyans in both urban and rural areas. Network coverage and internet speed vary from region to region but generally, service is available in most universities, research institutes, and government offices. The MALM web application and Story Map can also be used for educational purposes in high schools throughout the country as the thematic content provides supplementary material and information to science education.

References

- Capitani C, Garedew W, Mitiku A, Berecha GY, Hailu BT, Heiskanen J, Hurskainen P, Platts PJ, Siljander M, Pinard F, Johansson T, Marchant R (2018) Views from two mountains: exploring climate change impacts on traditional farming communities of Eastern African highlands through participatory scenarios. *Sustain Sci* (in print)
- Cope M, Mikhailova E, Post C, Schlautman M, McMillan P (2017) Developing an integrated cloud-based spatial-temporal system for monitoring phenology. *Ecol Inform* 39:123–129
- Damos P (2015) Modular structure of web-based decision support systems for integrated pest management. A review. *Agron Sustain Dev* 35(4):1347–1372
- Friedrich Ebert Stiftung (2012) Regional Disparities and Marginalization in Kenya. Elite PrePress Nairobi, Kenya
- Government of the Republic of Kenya (2007) Kenya Vision 2030. Ministry of Planning and National Development, Nairobi, Kenya
- Government of the Republic of Kenya (2013) Second medium term plan 2013–2017. Transforming Kenya: pathway to devolution, socio-economic development, equity and national unity. Kenya Vision 2030. The Presidency, Ministry of Devolution and Planning, Nairobi, Kenya
- Government of the Republic of Kenya (2014) Kenya gazette supplement no. 107. Senate Bills 2014. The Government Printer, Nairobi, Kenya
- Government of the Republic of Kenya (2017) Kenya climate smart agriculture strategy 2017–2026. Ministry of Agriculture, Livestock and Fisheries, Nairobi, Kenya
- Jekel T, Gryl I, Schulze U (2015) Education for Spatial Citizenship. In: Solari OM, Demirci A, van der Schee J (eds) Geospatial technologies and geography education in a changing world. IGU-UGI. Advances in geographical and environmental sciences. Springer, Japan, pp 35–49
- Lajis A, Nasir HM, Ismail N (2016) Web GIS based information visualization for pest infection: a case study of rice plantation. *Asian J Plant Sci* 15(3–4):109–114
- Lipper L, Thornton P, Campbell BM, Baedeker T, Braimoh A, Bwalya M, Caron P, Cattaneo A, Garrity D, Henry K, Hottle R, Jackson L, Jarvis A, Kossam F, Mann W, McCarthy N, Meybeck A, Neufeldt H, Remington T, Sen PT, Sessa R, Shula R, Tibu A, Torquebiau EF (2014) Climate-smart agriculture for food security. *Nat Clim Change* 4(12):1068–1072
- Minang PA, van Noordwijk M, Freeman OE, Mbow C, de Leeuw J, Catacutan D (eds) (2015) Climate-smart landscapes: multifunctionality in practice. World Agroforestry Centre (ICRAF), Nairobi
- Nyangau JZ (2014) Higher education as an instrument of economic growth in Kenya. FIRE: forum for international research in education, vol 1, no 1. Retrieved from <http://preserve.lehigh.edu/fire/vol1/iss1/3>
- Pelikka PKE, Heikinheimo V, Hietanen J, Schäfer E, Siljander M, Heiskanen J (2018) Impact of land cover change on aboveground carbon stocks in Afri-montane landscape in Kenya. *Appl Geogr* 94:178–189
- Platts PJ, Omeny P, Marchant R (2015) AFRICLIM: high-resolution climate projections for ecological applications in Africa. *Afr J Ecol* 53:103–108
- Scherr SJ, Shames S, Friedman R (2012) From climate-smart agriculture to climate-smart landscapes. *Agric Food Secur* 1(12)
- Tayyebi A, Meehan TD, Dischler J, Radloff G, Ferris M, Gratton C (2016) SmartScape™: a web-based decision support system for assessing the tradeoffs among multiple ecosystem services under crop-change scenarios. *Comput Electron Agric* 121:108–121
- Zhang D, Chen X, Yao H (2015) Development of a prototype web-based decision support system for watershed management. *Water* 7(2):780–792