

## Pharmacokinetics and Pharmacodynamics of Peptide and Protein Therapeutics

*Bernd Meibohm*

### INTRODUCTION

The rational use of drugs and the design of effective dosage regimens are facilitated by the appreciation of the central paradigm of clinical pharmacology that there is a defined relationship between the administered dose of a drug, the resulting drug concentrations in various body fluids and tissues, and the intensity of pharmacologic effects caused by these concentrations (Meibohm and Derendorf 1997). This dose-exposure-response relationship and thus the dose of a drug required to achieve a certain effect are determined by the drug's pharmacokinetic and pharmacodynamic properties (Fig. 5.1).

Pharmacokinetics describes the time course of the concentration of a drug in a body fluid, preferably plasma or blood, that results from the administration of a certain dosage regimen. It comprises all processes affecting drug absorption, distribution, metabolism, and excretion. Simplified, pharmacokinetics characterizes "*what the body does to the drug.*" In contrast, pharmacodynamics characterizes the intensity of a drug effect or toxicity resulting from certain drug concentrations in a body fluid, usually at the assumed site of drug action. It can be simplified to *what the drug does to the body* (Fig. 5.2) (Holford and Sheiner 1982; Derendorf and Meibohm 1999).

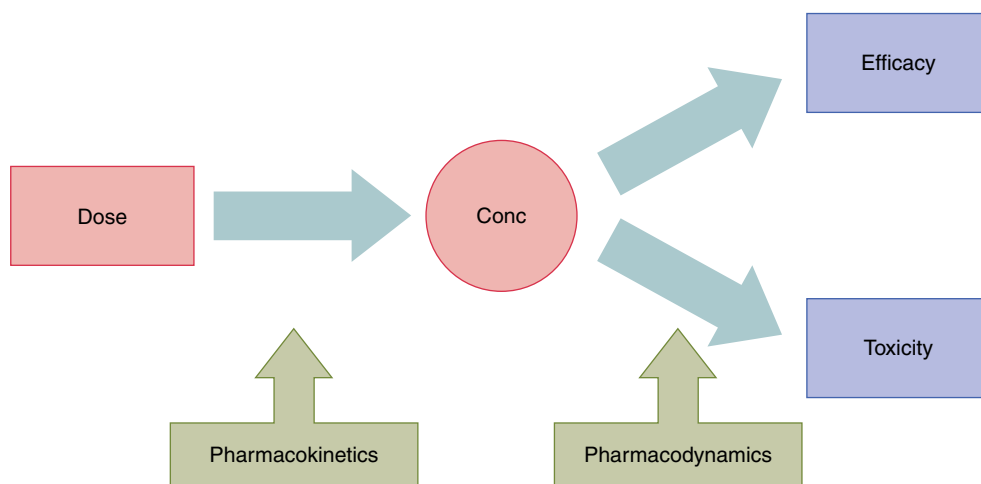
The understanding of the dose-concentration-effect relationship is crucial to any drug – including peptides and proteins – as it lays the foundation for dosing regimen design and rational clinical application. General pharmacokinetic and pharmacodynamic principles are to a large extent equally applicable to protein and peptide drugs as they are to traditional small molecule-based therapeutics. Deviations from some of these principles and additional challenges with regard to the characterization of the pharmacokinetics and pharmacodynamics of peptide and protein therapeutics, however, arise from some of their specific properties:

- (a) Their definition by the production process in a living organism rather than a chemically exactly defined structure and purity as it is the case for small-molecule drugs
- (b) Their structural similarity to endogenous structural or functional proteins and nutrients
- (c) Their intimate involvement in physiologic processes on the molecular level, often including regulatory feedback mechanisms
- (d) The analytical challenges to identify and quantify them in the presence of a myriad of similar molecules
- (e) Their large molecular weight and macromolecule character (for proteins)

This chapter will highlight some of the major pharmacokinetic properties and processes relevant for the majority of peptide and protein therapeutics and will provide examples of well-characterized pharmacodynamic relationships for peptide and protein drugs. The clinical pharmacology of monoclonal antibodies, including special aspects in their pharmacokinetics and pharmacodynamics, will be discussed in further detail in Chap. 7. For a more general discussion on pharmacokinetic and pharmacodynamic principles, the reader is referred to several textbooks and articles that review the topic in extensive detail (see Further Reading).

---

B. Meibohm, Ph.D., FCP (✉)  
Department of Pharmaceutical Sciences,  
University of Tennessee Health Science Center,  
College of Pharmacy, 881 Madison Avenue, Rm. 444,  
Memphis, TN 38163, USA  
e-mail: bmeibohm@uthsc.edu



**Figure 5.1** ■ The central paradigm of clinical pharmacology: the dose-concentration-effect relationship.

## PHARMACOKINETICS OF PROTEIN THERAPEUTICS

The *in vivo* disposition of peptide and protein drugs may often be predicted to a large degree from their physiological function (Tang and Meibohm 2006). Peptides, for example, which frequently have hormone activity, usually have short elimination half-lives, which is desirable for a close regulation of their endogenous levels and thus function. Insulin, for example, shows dose-dependent elimination with a relatively short half-life of 26 and 52 min at 0.1 and 0.2 U/kg, respectively. Contrary to that, proteins that have transport tasks such as albumin or long-term immunity functions such as immunoglobulins have elimination half-lives of several days, which enables and ensures the continuous maintenance of physiologically necessary concentrations in the bloodstream (Meibohm and Derendorf 1994). This is, for example, reflected by the elimination half-life of antibody drugs such as the anti-epidermal growth factor receptor antibody cetuximab, an IgG1 chimeric antibody for which a half-life of approximately 7 days has been reported (Herbst and Langer 2002).

### ■ Absorption of Protein Therapeutics

#### *Enteral Administration*

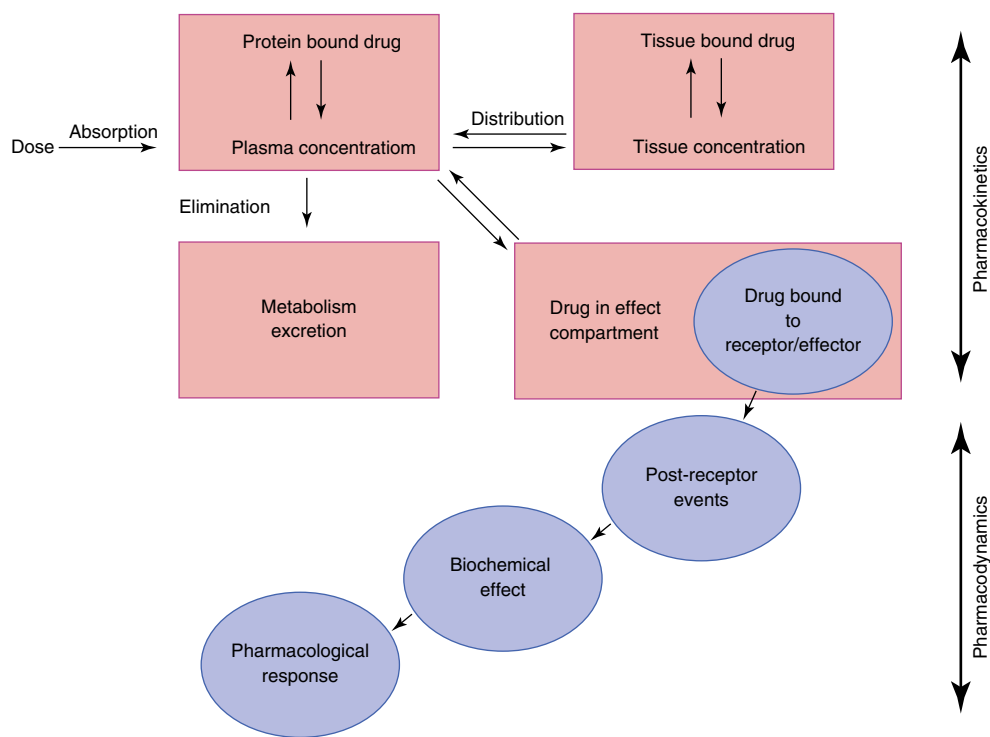
Peptides and proteins, unlike conventional small-molecule drugs, are generally not therapeutically active upon oral administration (Fasano 1998; Mahato et al. 2003; Tang et al. 2004). The lack of systemic bioavailability is mainly caused by two factors: (1) high gastrointestinal enzyme activity and (2) low permeability through the gastrointestinal mucosa. In fact, the substantial peptidase and protease activity in the gastrointestinal tract makes it the most efficient body

compartment for peptide and protein metabolism. Furthermore, the gastrointestinal mucosa presents a major absorption barrier for water-soluble macromolecules such as peptides and proteins (Tang et al. 2004). Thus, although various factors such as permeability, stability, and gastrointestinal transit time can affect the rate and extent of orally administered proteins, molecular size is generally considered the ultimate obstacle (Shen 2003).

Since oral administration is still a highly desirable route of delivery for protein drugs due to its convenience, cost-effectiveness, and painlessness, numerous strategies to overcome the obstacles associated with oral delivery of proteins have recently been an area of intensive research. Suggested approaches to increase the oral bioavailability of protein drugs include encapsulation into micro- or nanoparticles thereby protecting proteins from intestinal degradation (Lee 2002; Mahato et al. 2003; Shen 2003). Other strategies are chemical modifications such as amino acid backbone modifications and chemical conjugations to improve the resistance to degradation and permeability of the protein drug. Coadministration of protease inhibitors has also been suggested for the inhibition of enzymatic degradation (Pauletti et al. 1997; Mahato et al. 2003). More details on approaches for oral delivery of peptide and protein therapeutics are discussed in Chap. 4.

#### *Parenteral Administration*

Most peptide and protein drugs are currently formulated as parenteral formulations because of their poor oral bioavailability. Major routes of administration include intravenous (IV), subcutaneous (SC), and intramuscular (IM) administration. In addition, other



**Figure 5.2** ■ Physiological scheme of pharmacokinetic and pharmacodynamic processes.

non-oral administration pathways are utilized, including nasal, buccal, rectal, vaginal, transdermal, ocular, and pulmonary drug delivery (see Chap. 4).

IV administration of peptides and proteins offers the advantage of circumventing presystemic degradation, thereby achieving the highest concentration in the biological system. Protein therapeutics given by the IV route include, among many others, the tissue plasminogen activator (t-PA) analogues alteplase and tenecteplase, the recombinant human erythropoietin epoetin- $\alpha$ , and the granulocyte colony-stimulating factor filgrastim (Tang and Meibohm 2006).

IV administration as either a bolus dose or constant rate infusion, however, may not always provide the desired concentration-time profile depending on the biological activity of the product. In these cases, IM or SC injections may be more appropriate alternatives. For example, luteinizing hormone-releasing hormone (LH-RH) in bursts stimulates the release of follicle-stimulating hormone (FSH) and luteinizing hormone (LH), whereas a continuous baseline level will suppress the release of these hormones (Handelsman and Swerdloff 1986). To avoid the high peaks from an IV administration of leuprorelin, an LH-RH agonist, a long-acting monthly depot injection of the drug is approved for the treatment of prostate cancer and endometriosis (Periti et al. 2002). A recent study comparing SC versus IV administration of epoetin- $\alpha$  in

patients receiving hemodialysis reports that the SC route can maintain the hematocrit in a desired target range with a lower average weekly dose of epoetin- $\alpha$  compared to IV (Kaufman et al. 1998).

One of the potential limitations of SC and IM administration, however, are the presystemic degradation processes frequently associated with these administration routes, resulting in a reduced systemic bioavailability compared to IV administration. No correlation between the molecular weight of a protein therapeutic and its systemic bioavailability has so far been described in any species (Richter et al. 2012), and clinically observed bioavailability seems to be product-specific based on physicochemical properties and structure.

Bioavailability assessments for therapeutic proteins may be challenging if the protein exhibits the frequently encountered nonlinear pharmacokinetic behavior. Classic bioavailability assessments comparing systemic exposures quantified as area-under-the-concentration-time curve (AUC) resulting from extravascular versus IV administration assume linear pharmacokinetics, i.e., a drug clearance independent of concentration and the administration pathway. As this is not the case for many therapeutic proteins, especially those that undergo target-mediated drug disposition (see respective section in this chapter), bioavailability assessments using the classic approach can result in substantial bias

(Limothai and Meibohm 2011). Potential approaches suggested to minimize or overcome these effects include bioavailability assessments at doses at which the target- or receptor-mediated processes are saturated or to compare concentration-time profiles with similar shape and magnitude for extravascular and IV administration by modulating the input rate in the IV experiment.

The pharmacokinetically derived apparent absorption rate constant  $k_{app}$  for protein drugs administered via these administration routes is the combination of absorption into the systemic circulation and presystemic degradation at the absorption site, i.e., the sum of a true first-order absorption rate constant  $k_a$  and a first-order degradation rate constant. The true absorption rate constant  $k_a$  can then be calculated as

$$k_a = F \cdot k_{app}$$

where  $F$  is the systemic bioavailability compared to IV administration. A rapid apparent absorption, i.e., large  $k_{app}$ , can thus be the result of a slow true absorption and a fast presystemic degradation, i.e., a low systemic bioavailability (Colburn 1991).

For monoclonal antibodies and fusion proteins with antibody Fc fragment, interaction with the neonatal Fc receptor (FcRn) has also been identified as important to absorption processes (Roopenian and Akilesh 2007). In this context, FcRn prevents the monoclonal antibody or fusion protein from undergoing lysosomal degradation (see Chap. 7 for details) and thereby increases systemic bioavailability, but may also facilitate transcellular transport from the absorption site into the vascular space.

Other potential factors that may limit the rate and/or extent of uptake of proteins after SC or IM administration include variable local blood flow, injection trauma, and limitations of uptake into the systemic circulation related to effective capillary pore size, diffusion, and convective transport.

Several peptide and protein therapeutics including anakinra, etanercept, insulin, and pegfilgrastim are administered as SC injections. Following a SC injection, peptide and protein therapeutics may enter the systemic circulation either via blood capillaries or through lymphatic vessels (Porter and Charman 2000). In general, peptides and proteins larger than 16 kDa are predominantly absorbed into the lymphatics, whereas those under 1 kDa are mostly absorbed into the blood circulation. While diffusion is the driving force for the uptake into blood capillaries, transport of larger proteins through the interstitial space into lymphatic vessels is mediated by convective transport with the interstitial fluid following the hydrostatic and osmotic pressure differences. Since lymph flow and

interstitial convective transport are substantially slower than diffusion processes, larger proteins usually show a delayed and prolonged absorption process after SC administration that can even become the rate-limiting step in their overall disposition. There appears to be a defined relationship between the molecular weight of the protein and the proportion of the dose absorbed by the lymphatics (see Fig. 4.12) (Supersaxo et al. 1990). This is of particular importance for those agents whose therapeutic targets are lymphoid cells (i.e., interferons and interleukins). Studies with recombinant human interferon  $\alpha$ -2a (rhIFN  $\alpha$ -2a) indicate that following SC administration, high concentrations of the recombinant protein are found in the lymphatic system, which drains into regional lymph nodes (Supersaxo et al. 1988). Due to this targeting effect, clinical studies show that palliative low-to-intermediate-dose SC recombinant interleukin-2 (rIL-2) in combination with rhIFN  $\alpha$ -2a can be administered to patients in the ambulatory setting with efficacy and safety profiles comparable to the most aggressive IV rIL-2 protocol against metastatic renal cell cancer (Schomburg et al. 1993).

More recently, charge has also been described as an important factor in the SC absorption of proteins: While the positive and negative charges from collagen and hyaluronan in the extracellular matrix seem to be of similar magnitude, additional negative charges of proteoglycans may lead to a negative interstitial charge (Richter et al. 2012). This negative net charge and the associated ionic interactions with SC-administered proteins result in a slower transport for more positively rather than negatively charged proteins, as could be shown for several monoclonal antibodies (Mach et al. 2011).

## ■ Distribution of Protein Therapeutics *Distribution Mechanisms and Volumes*

The rate and extent of protein distribution is largely determined by the molecule size and molecular weight, physicochemical properties (e.g., charge, lipophilicity), binding to structural or transport proteins, and their dependency on active transport processes to cross biomembranes. Since most therapeutic proteins have high molecular weights and are thus large in size, their apparent volume of distribution is usually small and limited to the volume of the extracellular space due to their limited mobility secondary to impaired passage through biomembranes (Zito 1997). In addition, there is a mutual exclusion between protein therapeutics and the structural molecules of the extracellular matrix. This fraction of the interstitial space that is not available for distribution is expressed as the exclusion volume ( $V_e$ ). It is dependent on the molecular weight and charge of the macromolecule and further limits

extravascular distribution. For albumin (MW 66 kDa), the  $V_e$  is ~40 % in dog muscle tissue. Active tissue uptake and binding to intra- and extravascular proteins, however, can substantially increase the apparent volume of distribution of protein drugs, as reflected by the relatively large volume of distribution of up to 2.8 L/kg for interferon  $\beta$ -1b (Chiang et al. 1993).

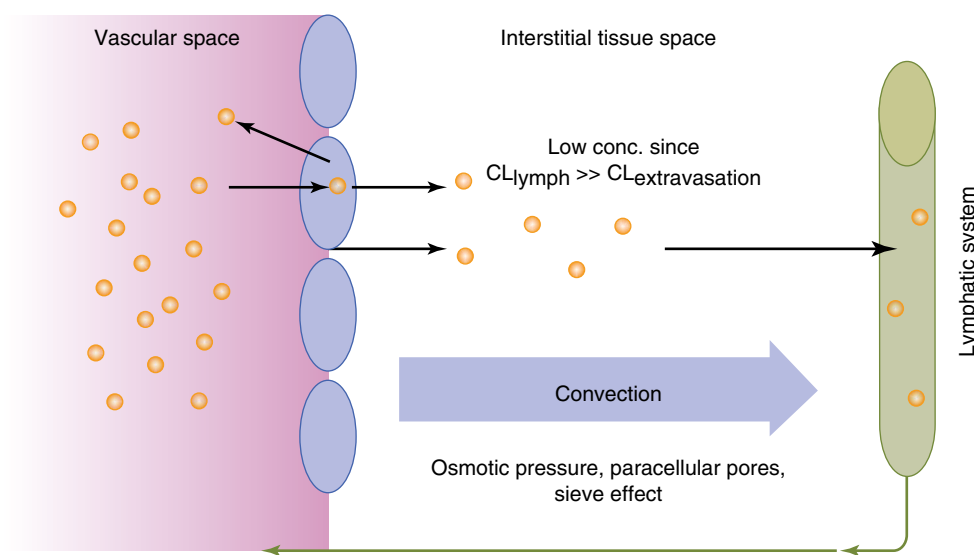
In contrast to small-molecule drugs, protein transport from the vascular space into the interstitial space of tissues is largely mediated by convection rather than diffusion, following the unidirectional fluid flux from the vascular space through paracellular pores into the interstitial tissue space (Fig. 5.3). The subsequent removal from the interstitial space is accomplished by lymph drainage back into the systemic circulation (Flessner et al. 1997). This underlines the unique role the lymphatic system plays in the disposition of protein therapeutics as already discussed in the section on absorption. The fact that the transfer clearance from the vascular to the interstitial space is smaller than the transfer clearance from the interstitial space to the lymphatic system results in lower protein concentrations in the interstitial space compared to the vascular space, thereby further limiting the apparent volume of distribution for protein therapeutics. Another, but much less prominent pathway for the movement of protein molecules from the vascular to the interstitial space is transcellular migration via endocytosis (Baxter et al. 1994; Reddy et al. 2006).

Besides the size-dependent sieving of macromolecules through the capillary walls, charge may also play an important role in the biodistribution of proteins. It has been suggested that the electrostatic attraction between positively charged proteins and negatively charged cell membranes might increase the rate and extent of tissue distribution. Most cell surfaces

are negatively charged because of their abundance of glycosaminoglycans in the extracellular matrix.

After IV administration, peptides and proteins usually follow a biexponential plasma concentration-time profile that can best be described by a two-compartment pharmacokinetic model (Meibohm 2004). A biexponential concentration-time profile has, for example, been described for clenoliximab, a macaque-human chimeric monoclonal antibody specific to the CD4 molecule on the surface of T lymphocytes (Mould et al. 1999). Similarly, AJW200, a humanized monoclonal antibody to the von Willebrand factor, exhibited biphasic pharmacokinetics after IV administration (Kageyama et al. 2002). The central compartment in this two-compartment model represents primarily the vascular space and the interstitial space of well-perfused organs with permeable capillary walls, including the liver and the kidneys. The peripheral compartment is more reflective of concentration-time profiles in the interstitial space of slowly equilibrating tissues.

The central compartment in which proteins initially distribute after IV administration has thus typically a volume of distribution equal or slightly larger than the plasma volume, i.e., 3–8 L. The total volume of distribution frequently comprises with 14–20 L not more than two to three times the initial volume of distribution (Colburn 1991; Kageyama et al. 2002). An example for such a distribution pattern is the t-PA analogue tenecteplase. Radiolabeled  $^{125}\text{I}$ -tenecteplase was described to have an initial volume of distribution of 4.2–6.3 L and a total volume of distribution of 6.1–9.9 L with liver as the only organ that had a significant uptake of radioactivity. The authors concluded that the small volume of distribution suggests primarily intravascular distribution for tenecteplase, consistent with



**Figure 5.3** ■ Distribution mechanisms of therapeutic proteins: convective extravasation rather than diffusion as major distribution process.  $CL_{extravasation}$  transfer clearance from the vascular to the interstitial,  $CL_{lymph}$  transfer clearance from the interstitial space to the lymphatic system.

the drug's large molecular weight of 65 kDa (Tanswell et al. 2002).

Epoetin- $\alpha$ , for example, has a volume of distribution estimated to be close to the plasma volume at 0.056 L/kg after an IV administration to healthy volunteers (Ramakrishnan et al. 2004). Similarly, volume of distribution for darbepoetin- $\alpha$  has been reported as 0.062 L/kg after IV administration in patients undergoing dialysis (Allon et al. 2002), and distribution of thrombopoietin has also been reported to be limited to the plasma volume ( $\sim 3$  L) (Jin and Krzyzanski 2004).

It should be stressed that pharmacokinetic calculations of volume of distribution may be problematic for many protein therapeutics (Tang et al. 2004; Straughn 2006). Noncompartmental determination of volume of distribution at steady state ( $V_{ss}$ ) using statistical moment theory assumes first-order disposition processes with elimination occurring from the rapidly equilibrating or central compartment (Perrier and Mayersohn 1982; Straughn 1982; Veng-Pedersen and Gillespie 1984). These basic assumptions, however, are not fulfilled for numerous protein therapeutics, as proteolysis and receptor-mediated elimination in peripheral tissues may constitute a substantial fraction of the overall elimination process. If protein therapeutics are eliminated from slowly equilibrating tissues at a rate greater than their distribution process, substantial error in the volume of distribution assessment may occur. A recent simulation study could show that if substantial tissue elimination exists, a  $V_{ss}$  determined by noncompartmental methods will underestimate the "true"  $V_{ss}$  and that the magnitude of error tends to be larger the more extensively the protein is eliminated by tissue routes (Meibohm 2004; Straughn 2006; Tang and Meibohm 2006).

These challenges in characterizing the distribution of protein therapeutics can only be overcome by determining actual protein concentrations in the tissue by biopsy or necropsy or via biodistribution studies with radiolabeled compound and/or imaging techniques.

Biodistribution studies are imperative for small organic synthetic drugs, since long residence times of the radioactive label in certain tissues may be an indication of tissue accumulation of potentially toxic metabolites. Because of the possible reutilization of amino acids from protein drugs in endogenous proteins, such a safety concern does not exist for protein therapeutics. Therefore, biodistribution studies for protein drugs are usually only performed to assess drug targeting to specific tissues or to detect the major organs of elimination.

If a biodistribution study with radiolabeled protein is performed, either, an external label such as  $^{125}\text{I}$  can be chemically coupled to the protein if it contains a

suitable amino acid such as tyrosine or lysine, or internal labeling can be used by growing the production cell line in the presence of amino acids labeled with  $^3\text{H}$ ,  $^{14}\text{C}$ ,  $^{35}\text{S}$ , etc. The latter method, however, is not routinely used because of the prohibition of radioactive contamination of fermentation equipment (Meibohm and Derendorf 2003). Moreover, internally labeled proteins may be less desirable than iodinated proteins because of the potential reutilization of the radiolabeled amino acid fragments in the synthesis of endogenous proteins and cell structures. Irrespective of the labeling method, but more so for external labeling, the labeled product should have demonstrated physicochemical and biological properties identical to the unlabeled molecule (Bennett and McMartin 1978).

In addition, as for all types of radiolabeled studies, it needs to be established whether the measured radioactivity represents intact labeled protein, or radiolabeled metabolites, or the liberated label. Trichloroacetic acid-precipitable radioactivity is often used to distinguish intact protein from free label or low-molecular-weight metabolites, which appear in the supernatant after centrifugation (Meibohm and Derendorf 2003). Proteins with reutilized labeled amino acids and large protein metabolites can only be distinguished from the original protein by techniques such as polyacrylamide gel electrophoresis (PAGE), high pressure liquid chromatography (HPLC), specific immunoassays, or bioassays (see Chap. 2).

#### *Protein Binding of Protein Therapeutics*

Another factor that can influence the distribution of therapeutic peptides and proteins is binding to endogenous protein structures. Physiologically active endogenous peptides and proteins frequently interact with specific binding proteins involved in their transport and regulation. Furthermore, interaction with binding proteins may enable or facilitate cellular uptake processes and thus affect the drug's pharmacodynamics.

It is a general pharmacokinetic principle, which is also applicable to proteins, that only the free, unbound fraction of a drug substance is accessible to distribution and elimination processes as well as interactions with its target structures at the site of action, for example, a receptor or ion channel. Thus, protein binding may affect the pharmacodynamics, but also disposition properties of protein therapeutics. Specific binding proteins have been identified for numerous protein drugs, including recombinant human DNase for use as mucolytic in cystic fibrosis (Mohler et al. 1993), growth hormone (Toon 1996), and recombinant human vascular endothelial growth factor (rhVEGF) (Eppler et al. 2002).

Protein binding not only affects the unbound fraction of a protein drug and thus the fraction of a drug available to exert pharmacological activity, but

many times it also either prolongs protein circulation time by acting as a storage depot or it enhances protein clearance. Recombinant cytokines, for example, may after IV administration encounter various cytokine-binding proteins including soluble cytokine receptors and anti-cytokine antibodies (Piscitelli et al. 1997). In either case, the binding protein may either prolong the cytokine circulation time by acting as a storage depot or it may enhance the cytokine clearance.

Growth hormone, as another example, has at least two binding proteins in plasma (Wills and Ferraiolo 1992). This protein binding substantially reduces growth hormone elimination with a tenfold smaller clearance of total compared to free growth hormone, but also decreases its activity via reduction of receptor interactions.

Apart from these specific bindings, peptides and proteins may also be nonspecifically bound to plasma proteins. For example, metkephamid, a met-enkephalin analogue, was described to be 44–49 % bound to albumin (Taki et al. 1998), and octreotide, a somatostatin analogue, is up to 65 % bound to lipoproteins (Chanson et al. 1993).

#### *Distribution via Receptor-Mediated Uptake*

Aside from physicochemical properties and protein binding of protein therapeutics, site-specific receptor-mediated uptake can also substantially influence and contribute to the distribution of protein therapeutics, as well as to elimination and pharmacodynamics (see section on “*Target-Mediated Drug Disposition*”).

The generally low volume of distribution should not necessarily be interpreted as low tissue penetration. Receptor-mediated specific uptake into the target organ, as one mechanism, can result in therapeutically effective tissue concentrations despite a relatively small volume of distribution. Nartograstim, a recombinant derivative of the granulocyte colony-stimulating factor (G-CSF), for example, is characterized by a specific, dose-dependent, and saturable tissue uptake into the target organ bone marrow, presumably via receptor-mediated endocytosis (Kuwabara et al. 1995).

#### ■ **Elimination of Protein Therapeutics**

Protein therapeutics are generally subject to the same catabolic pathways as endogenous or dietetic proteins. The end products of protein metabolism are thus amino acids that are reutilized in the endogenous amino acid pool for the de novo biosynthesis of structural or functional proteins in the human body (Meibohm 2004). Detailed investigations on the metabolism of proteins are relatively difficult because of the myriad of potential molecule fragments that may be formed, and are therefore generally not conducted. Non-metabolic elimination pathways such as renal or biliary excretion

are negligible for most proteins. If biliary excretion occurs, however, it is generally followed by subsequent metabolic degradation of the compound in the gastrointestinal tract.

#### *Proteolysis*

In contrast to small-molecule drugs, metabolic degradation of peptides and protein therapeutics by proteolysis can occur unspecifically nearly everywhere in the body. Due to this unspecific proteolysis of some proteins already in blood as well as potential active cellular uptake, the clearance of protein drugs can exceed cardiac output, i.e., >5 L/min for blood clearance and >3 L/min for plasma clearance (Meibohm 2004). The clearance of peptides or proteins in this context describes the irreversible removal of active substance from the vascular space, which includes besides metabolism also cellular uptake. The metabolic rate for protein degradation generally increases with decreasing molecular weight from large to small proteins to peptides (Table 5.1), but is also dependent on other factors such as size, charge, lipophilicity, functional groups, and glycosylation pattern as well as secondary and tertiary structure.

Proteolytic enzymes such as proteases and peptidases are ubiquitous throughout the body. Sites capable of extensive peptide and protein metabolism are not only limited to the liver, kidneys, and gastrointestinal tissue, but also include blood and vascular endothelium as well as other organs and tissues. As proteases and peptidases are also located within cells, intracellular uptake is per se more an elimination rather than a distribution process (Tang and Meibohm 2006). While peptidases and proteases in the gastrointestinal tract and in lysosomes are relatively unspecific, soluble peptidases in the interstitial space and exopeptidases on the cell surface have a higher selectivity and determine the specific metabolism pattern of an organ. The proteolytic activity of subcutaneous and lymphatic tissue, for example, results in a partial loss of activity of SC compared to IV administered interferon- $\gamma$ .

#### *Gastrointestinal Protein Metabolism*

As pointed out earlier, the gastrointestinal tract is a major site of protein metabolism with high proteolytic enzyme activity due to its primary function to digest dietary proteins. Thus, gastrointestinal metabolism is one of the major factors limiting systemic bioavailability of orally administered protein drugs. The metabolic activity of the gastrointestinal tract, however, is not limited to orally administered proteins. Parenterally administered peptides and proteins may also be metabolized in the intestinal mucosa following intestinal secretion. At least 20 % of the degradation of endogenous albumin, for example, has been reported to take place in the gastrointestinal tract (Colburn 1991).

Molecular weight	Elimination site	Predominant elimination mechanisms	Major determinant
<500	Blood, liver	Extracellular hydrolysis Passive lipid diffusion	Structure, lipophilicity
500–1,000	Liver	Carrier-mediated uptake Passive lipid diffusion	Structure, lipophilicity
1,000–50,000	Kidney	Glomerular filtration and subsequent degradation processes (see Fig. 5.4)	Molecular weight
50,000–200,000	Kidney, liver	Receptor-mediated endocytosis	Sugar, charge
200,000–400,000		Opsonization	$\alpha_2$ -macroglobulin, IgG
>400,000		Phagocytosis	Particle aggregation

After Meijer and Ziegler (1993)

Other determining factors are size, charge, lipophilicity, functional groups, sugar recognition, vulnerability for proteases, aggregation to particles, formation of complexes with opsonization factors, etc. As indicated, mechanisms may overlap. Endocytosis may occur at any molecular weight range

**Table 5.1** ■ Molecular weight as major determinant of the elimination mechanisms of peptides and proteins.

### Renal Protein Metabolism

The kidneys are a major site of protein metabolism for smaller-sized proteins that undergo glomerular filtration. The size-selective cutoff for glomerular filtration is approximately 60 kDa, although the effective molecule radius based on molecular weight and conformation is probably the limiting factor (Edwards et al. 1999). Glomerular filtration is most efficient, however, for proteins smaller than 30 kDa (Kompella and Lee 1991). Peptides and small proteins (<5 kDa) are filtered very efficiently, and their glomerular filtration clearance approaches the glomerular filtration rate (GFR, ~120 mL/min in humans). For molecular weights exceeding 30 kDa, the filtration rate falls off sharply. In addition to size selectivity, charge selectivity has also been observed for glomerular filtration where anionic macromolecules pass through the capillary wall less readily than neutral macromolecules, which in turn pass through less readily than cationic macromolecules (Deen et al. 2001).

The importance of the kidneys as elimination organ could, for example, be shown for interleukin-2, macrophage colony-stimulating factor (M-CSF), and interferon- $\alpha$  (McMartin 1992; Wills and Ferraiolo 1992).

Renal metabolism of peptides and small proteins is mediated through three highly effective processes (Fig. 5.4). As a result, only minuscule amounts of intact protein are detectable in urine.

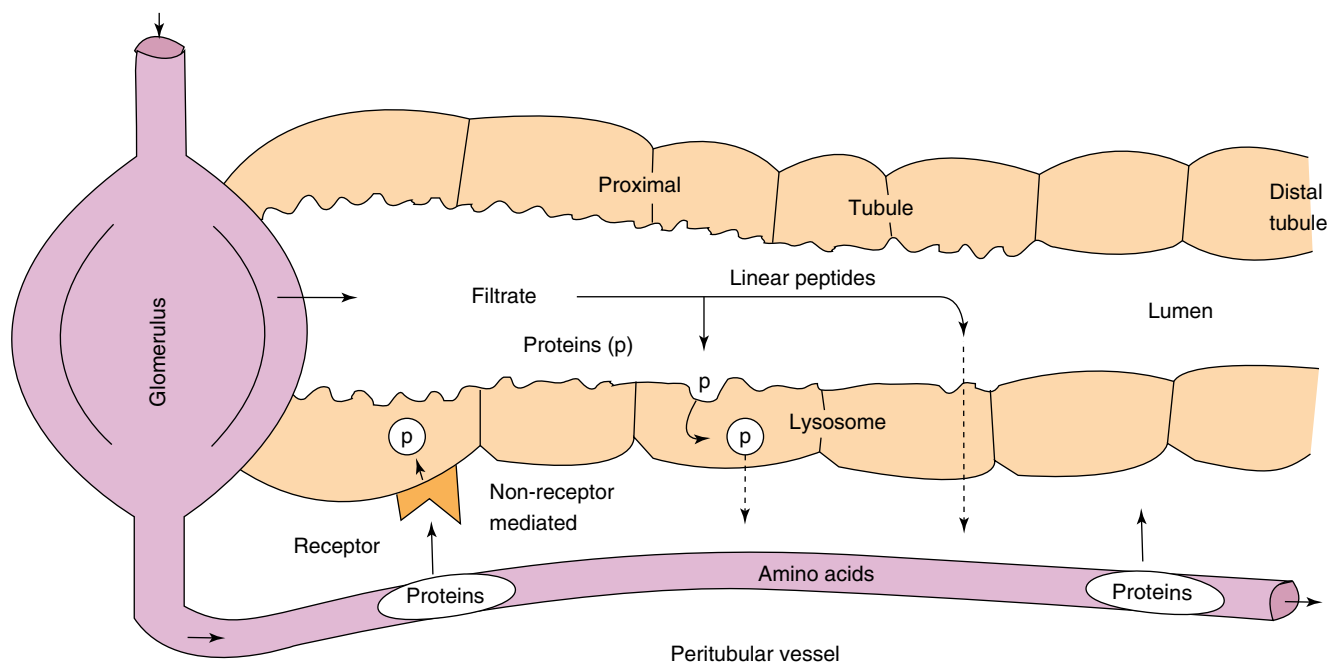
The first mechanism involves glomerular filtration of larger, complex peptides and proteins followed by reabsorption into endocytic vesicles in the proximal tubule and subsequent hydrolysis into small peptide fragments and amino acids (Maack et al. 1985). This

mechanism of elimination has been described for IL-2 (Anderson and Sorenson 1994), IL-11 (Takagi et al. 1995), growth hormone (Johnson and Maack 1977), and insulin (Rabkin et al. 1984).

The second mechanism entails glomerular filtration followed by intraluminal metabolism, predominantly by exopeptidases in the luminal brush border membrane of the proximal tubule. The resulting peptide fragments and amino acids are reabsorbed into the systemic circulation. This route of disposition applies to small linear peptides such as glucagon and LH-RH (Carone and Peterson 1980; Carone et al. 1982). Recent studies implicate the proton-driven peptide transporters PEPT1 and especially PEPT2 as the main route of cellular uptake of small peptides and peptide-like drugs from the glomerular filtrates (Inui et al. 2000). These high-affinity transport proteins seem to exhibit selective uptake of di- and tripeptides, which implicates their role in renal amino acid homeostasis (Daniel and Herget 1997).

For both mechanisms, glomerular filtration is the dominant, rate-limiting step as subsequent degradation processes are not saturable under physiologic conditions (Maack et al. 1985; Colburn 1991). Due to this limitation of renal elimination, the renal contribution to the overall elimination of proteins is dependent on the proteolytic activity for these proteins in other body regions. If metabolic activity for these proteins is high in other body regions, there is only minor renal contribution to total clearance, and it becomes negligible in the presence of unspecific degradation throughout the body. If the metabolic activity is low in other tissues or if distribution to the extravascular space is limited, however, the renal contribution to total clearance may approach 100 %.





**Figure 5.4** ■ Pathways of renal metabolism of peptides and proteins: glomerular filtration followed by either (I) intraluminal metabolism or (II) tubular reabsorption with intracellular lysosomal metabolism and (III) peritubular extraction with intracellular lysosomal metabolism (Modified from Maack et al. (1985)).

The involvement of glomerular filtration in the renal metabolism of therapeutic proteins implies that the pharmacokinetics of therapeutic proteins below the molecular weight or hydrodynamic volume cutoff size for filtration will be affected by renal impairment. Indeed, it has been reported that the systemic exposure and elimination half-life increases with decreasing glomerular filtration rate for recombinant human interleukin-10 (18 kDa), recombinant human growth hormone (22 kDa), and the recombinant human IL-1 receptor antagonist anakinra (17.3 kDa). Consistent with these theoretical considerations is also the observation that for monoclonal antibodies (150 kDa) such as rituximab, cetuximab, bevacizumab, and trastuzumab, no effect of renal impairment on their disposition has been reported (Meibohm and Zhou 2012).

The third mechanism of renal metabolism is peritubular extraction of peptides and proteins from post-glomerular capillaries with subsequent intracellular metabolism. Experiments using radioiodinated growth hormone ( $^{125}\text{I}$ -rGH) have demonstrated that while reabsorption into endocytic vesicles at the proximal tubule is still the dominant route of disposition, a small percentage of the hormone may be extracted from the peritubular capillaries (Johnson and Maack 1977; Krogsgaard Thomsen et al. 1994). Peritubular transport of proteins and peptides from the basolateral membrane has also been shown for insulin (Nielsen et al. 1987).

#### Hepatic Protein Metabolism

Aside from renal and gastrointestinal metabolism, the liver may also play a major role in the metabolism of protein therapeutics, especially for larger proteins. Exogenous as well as endogenous proteins undergo proteolytic degradation to dipeptides and amino acids that are reused for endogenous protein synthesis. Proteolysis usually starts with endopeptidases that attack in the middle part of the protein, and the resulting oligopeptides are then further degraded by exopeptidases. The rate of hepatic metabolism is largely dependent on the specific amino acid sequence of the protein (Meibohm 2004).

The major prerequisite for hepatic protein metabolism is the uptake of proteins in the different liver cell types. An overview of the different mechanisms of hepatic uptake of proteins is listed in Table 5.2.

Small peptides may cross the hepatocyte membrane via simple passive diffusion if they have sufficient hydrophobicity. Peptides of this nature include cyclosporin (cyclic peptide) (Ziegler et al. 1988). Other cyclic and linear peptides of small size (<1.4 kDa) and hydrophobic nature (containing aromatic amino acids), such as cholecystokinin-8 (CCK-8; 8 amino acids), are taken up by the hepatocytes by carrier-mediated transport (Ziegler et al. 1988), in the case of CCK-8 by the organic anion-transporting polypeptide OATP-8 (SLCO1B3) (Ismair et al. 2001). After internalization into the cytosol, these peptides are usually metabolized by microsomal enzymes or cytosolic peptidases.

Cell type	Uptake mechanism	Proteins/peptides transported
Hepatocytes	Anionic passive diffusion, carrier-mediated transport	Cyclic and linear hydrophobic peptides (<1.4 kDa; e.g., cyclosporins, CCK-8)
	RME: Gal/GalNAc receptor (asialoglycoprotein receptor)	N-acetylgalactosamine-terminated glycoproteins, galactose-terminated glycoproteins (e.g., desialylated EPO)
	RME: low-density lipoprotein receptor (LDLR)	LDL, apoE-, and apoB-containing lipoproteins
	RME: LDLR-related protein (LRP receptor)	$\alpha_2$ -macroglobulin, apoE-enriched lipoproteins, lipoprotein lipase (LpL), lactoferrin, t-PA, thrombospondin (TSP), TGF- $\beta$ , and IL-1 $\beta$ bound to $\alpha_2$ -macroglobulin
	RME: other receptors	IgA, glycoproteins, lipoproteins, immunoglobulin intestinal and pancreatic peptides, metallo- and hemoproteins, transferrin, insulin, glucagon, GH, EGF
	Nonselective pinocytosis (non-receptor-mediated)	Albumin, antigen-antibody complexes, some pancreatic proteins, some glycoproteins
Kupffer cells	Endocytosis	Particulates with galactose groups
Kupffer and endothelial cells	RME	IgG, N-acetylgalactosamine-terminated glycoproteins
	RME: mannose receptor	Mannose-terminated glycoproteins (e.g., t-PA, renin)
	RME: fucose receptor	Fucose-terminated glycoproteins
Endothelial cells	RME: scavenger receptor	Negatively charged proteins
	RME: other receptors	VEGF
Fat-storing cells	RME: mannose-6-phosphate receptor	Mannose-6-phosphate-terminated proteins (e.g., IGF-II)

Compiled from several sources, including reviews by Cumming (1991), Kompella and Lee (1991), and Marks et al. (1995)  
RME receptor-mediated endocytosis, IGF insulin-like growth factor, EGF epidermal growth factor, TGF tissue growth factor, GH growth hormone

**Table 5.2** ■ Hepatic uptake mechanisms for proteins and protein complexes.

Uptake of larger peptides and proteins can either be facilitated through pinocytosis or by receptor-mediated endocytosis. Pinocytosis is an unspecific fluid-phase endocytosis, in which molecules are taken up into cells by forming invaginations of cell membrane around extracellular fluid, that are subsequently taken up as membrane vesicles.

Receptor-mediated endocytosis is a clathrin-mediated endocytosis process via relatively unspecific, promiscuous membrane receptors (McMahon and Boucrot 2011). In receptor-mediated endocytosis, circulating proteins are recognized by specific receptor proteins. The receptors are usually integral membrane glycoproteins with an exposed binding domain on the extracellular side of the cell membrane. After the binding of the circulating protein to the receptor, the complex is already present or moves in clathrin-coated pit regions, and the membrane invaginates and pinches off to form an endocytotic coated vesicle that contains the receptor

and ligand (internalization). The vesicle coat consists of proteins (clathrin, adaptin, and others), which are then removed by an uncoating adenosine triphosphatase (ATPase). The vesicle parts, the receptor, and the ligands dissociate and are targeted to various intracellular locations. Some receptors, such as the low-density lipoprotein (LDL), asialoglycoprotein, and transferrin receptors, are known to undergo recycling. Since sometimes several hundred cycles are part of a single receptor's lifetime, the associated receptor-mediated endocytosis is of high capacity. Other receptors, such as the interferon receptor, undergo degradation. This degradation leads to a decrease in the concentration of receptors on the cell surface (receptor downregulation). Others, such as insulin receptors, for example, undergo both recycling and degradation (Kompella and Lee 1991).

For glycoproteins, receptor-mediated endocytosis through sugar-recognizing C-type lectin receptors is an efficient hepatic uptake mechanism if a critical number

of exposed sugar groups (mannose, galactose, fucose, N-acetylglucosamine, N-acetylgalactosamine, or glucose) is exceeded (Meijer and Ziegler 1993). Important C-type lectin receptors in the liver are the asialoglycoprotein receptor on hepatocytes and the mannose and fucose receptors on Kupffer and liver endothelial cells (Smedsrod and Einarsson 1990; Bu et al. 1992). The high-mannose glycans in the first kringle domain of t-PA, for example, have been implicated in its hepatic clearance via these receptors (Cumming 1991).

The low-density lipoprotein receptor-related protein (LRP) is a member of the LDL receptor family responsible for endocytosis of several important lipoproteins, proteases, and protease-inhibitor complexes in the liver and other tissues (Strickland et al. 1995). Examples of proteins and protein complexes for which hepatic uptake is mediated by LRP are listed in Table 5.2.

Uptake of proteins by liver cells is followed by transport to an intracellular compartment for metabolism. Proteins internalized into vesicles via an endocytotic mechanism undergo intracellular transport towards the lysosomal compartment near the center of the cell. There, the endocytotic vehicles fuse with or mature into lysosomes, which are specialized acidic vesicles that contain a wide variety of hydrolases capable of degrading all biological macromolecules. Proteolysis is started by endopeptidases (mainly cathepsin D) that act on the middle part of the proteins. Oligopeptides – as the result of the first step – are further degraded by exopeptidases. The resulting amino acids and dipeptides reenter the metabolic pool of the cell. The hepatic metabolism of glycoproteins may occur more slowly than the naked protein because protecting oligosaccharide chains need to be removed first. Metabolized proteins and peptides in lysosomes from hepatocytes, hepatic sinusoidal cells, and Kupffer cells may be released into the blood. Degraded proteins in hepatocyte lysosomes can also be delivered to the bile canaliculus and excreted by exocytosis.

Besides intracellular degradation, a second intracellular pathway for proteins is the direct shuttle or transcytotic pathway (Kompella and Lee 1991). In this case, the endocytotic vesicle formed at the cell surface traverses the cell to the peribiliary space, where it fuses with the bile canaliculus membrane, releasing its contents by exocytosis into bile. This pathway bypasses the lysosomal compartment completely. It has been described for polymeric immunoglobulin A but is not assumed to be a major elimination pathway for most protein drugs.

### *Target-Mediated Protein Metabolism*

Therapeutic proteins frequently bind with high affinity to membrane-associated receptors on the cell surface if the receptors are the target structure to which the protein therapeutic is directed. This binding can lead to

receptor-mediated uptake by endocytosis and subsequent intracellular lysosomal metabolism. The associated drug disposition behavior in which the binding to the pharmacodynamic target structure affects the pharmacokinetics of a drug compound is termed “target-mediated drug disposition” (Levy 1994).

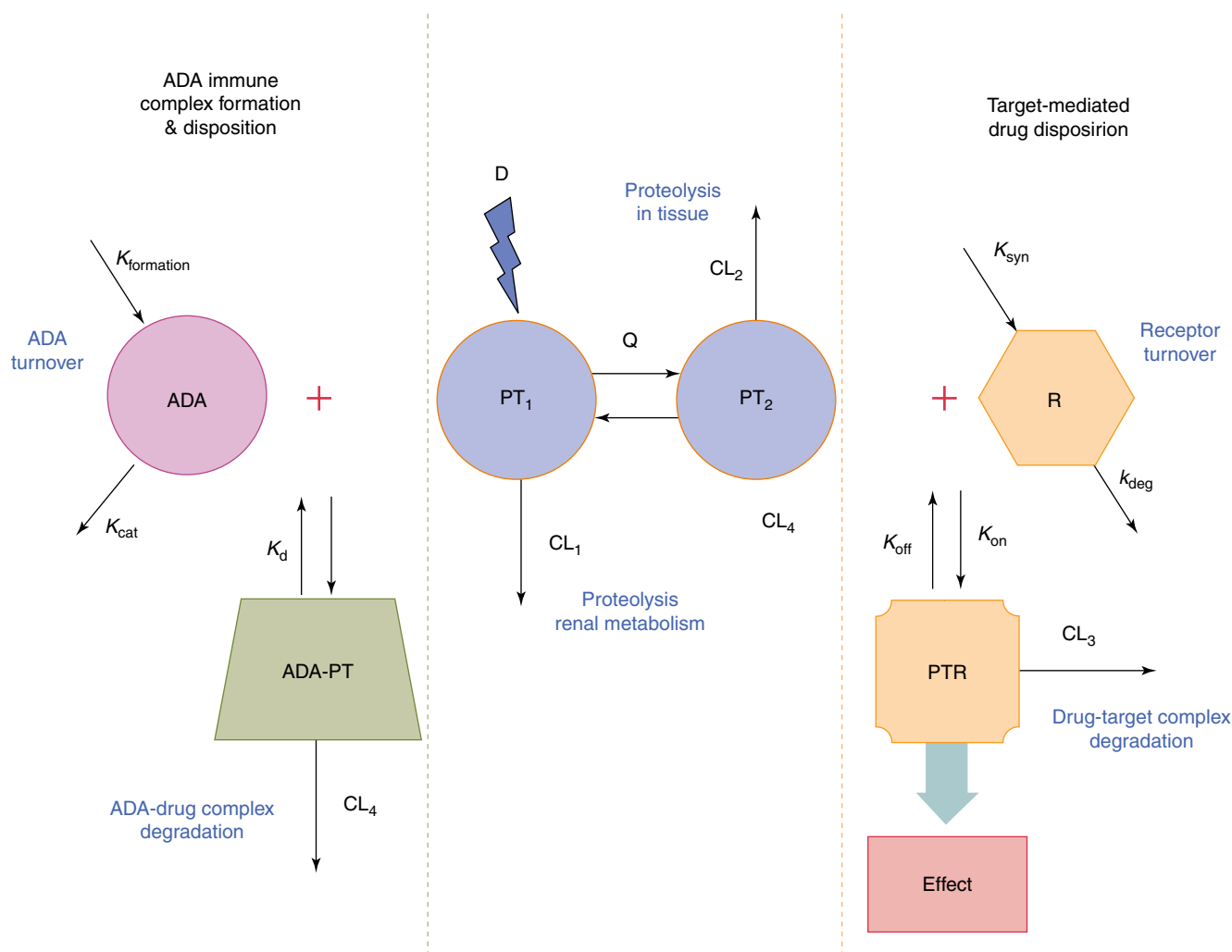
For conventional small-molecule drugs, receptor binding is usually negligible compared to the total amount of drug in the body and rarely affects their pharmacokinetic profile. In contrast, a substantial fraction of a protein therapeutic can be bound to its pharmacologic target structure, for example, a receptor. Target-mediated drug disposition can affect distribution as well as elimination processes. Most notably, receptor-mediated protein metabolism is a frequently encountered elimination pathway for many protein therapeutics (Meibohm 2004).

Receptor-mediated uptake and metabolism via interaction with these generally high-affinity, low-capacity binding sites is not limited to a specific organ or tissue type. Thus, any tissue including the therapeutically targeted cells that express receptors for the drug can contribute to the elimination of the protein therapeutic (Fig. 5.5) (Zhang and Meibohm 2012).

Since the number of protein drug receptors is limited, receptor-mediated protein metabolism can usually be saturated within therapeutic concentrations, or more specifically at relatively low molar ratios between the protein drug and the receptor (Mager 2006). As a consequence, the elimination clearance of these protein drugs is not constant but dose dependent and decreases with increasing dose. Thus, receptor-mediated elimination constitutes a major source for nonlinear pharmacokinetic behavior of numerous protein drugs, i.e., systemic exposure to the drug increases more than proportional with increasing dose (Tang et al. 2004).

Recombinant human macrophage colony-stimulating factor (M-CSF), for example, undergoes besides linear renal elimination a nonlinear elimination pathway that follows Michaelis-Menten kinetics and is linked to a receptor-mediated uptake into macrophages. At low concentrations, M-CSF follows linear pharmacokinetics, while at high concentrations nonrenal elimination pathways are saturated resulting in nonlinear pharmacokinetic behavior (Fig. 5.6) (Bauer et al. 1994).

Nonlinearity in pharmacokinetics resulting from target-mediated drug disposition has also been observed for several monoclonal antibody therapeutics, for instance for the anti-HER2 humanized monoclonal antibody trastuzumab. Trastuzumab is approved for the combination treatment of HER2 protein overexpressing metastatic breast cancer. With increasing dose level, the mean terminal half-life of trastuzumab increases and the clearance decreases, leading to overproportional increases in systemic exposure with

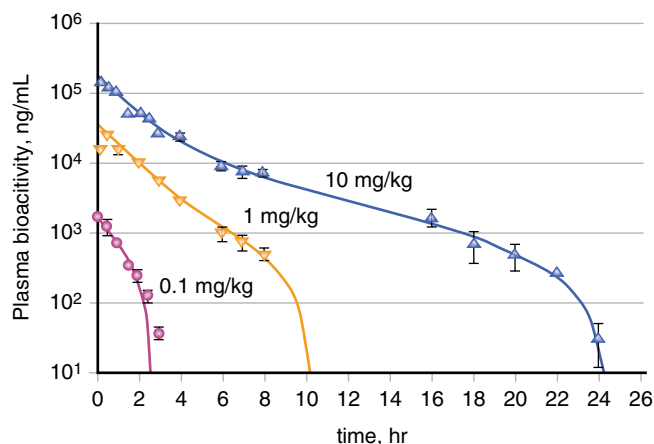


**Figure 5.5** ■ Example of multiple clearance pathways affecting the pharmacokinetics of a typical protein therapeutic. Depicted is a two-compartment pharmacokinetic model with intravenous administration of a dose ( $D$ ), concentrations of the protein therapeutic in the central ( $PT_1$ ) and peripheral ( $PT_2$ ) compartment, and interdepartmental clearance  $Q$ . The pharmacokinetic model includes two clearance pathways, one from the central compartment ( $CL_1$ ) representative of, for example, renal metabolism or proteolytic degradation through the reticuloendothelial system and a second proteolytic degradation pathway from the peripheral compartment ( $CL_2$ ) representative of, for example, proteolytic degradation through a receptor-mediated endocytosis pathway. Added to these two clearance pathways is on the right side a target-mediated disposition pathway that constitutes interaction of the protein therapeutic with its pharmacologic target receptor, which is in a homeostatic equilibrium of synthesis and degradation (synthesis rate  $k_{\text{syn}}$  and degradation rate constant  $k_{\text{deg}}$ ). The dynamic equilibrium for the formation of the resulting protein therapeutic-receptor complex ( $PT$ - $R$ ) is determined through the association rate constant  $k_{\text{on}}$  and the dissociation rate constant  $k_{\text{off}}$ . The formation of  $PT$ - $R$  does not only elicit the pharmacologic effect, but also triggers degradation of the complex. Thus, target binding and subsequent  $PT$ - $R$  degradation constitute an additional clearance pathway for the protein therapeutic ( $CL_3$ ). The left side of the graphic depicts the effect of an immune response to the protein therapeutic resulting in anti-drug antibody ( $ADA$ ) formation. Again, the circulating concentration of the  $ADA$  is determined by a homeostatic equilibrium between its formation rate ( $k_{\text{formation}}$ ) and a catabolic turnover process (rate constant  $k_{\text{cat}}$ ). The  $ADA$  response results in the formation of immune complexes with the drug ( $ADA$ - $PT$ ). Dependent on the size and structure of the immune complexes, endogenous elimination pathways through the reticuloendothelial system may be triggered, most likely via  $Fc\gamma$ -mediated endocytosis. Thus, immune complex formation and subsequent degradation may constitute an additional clearance pathway ( $CL_4$ ) for protein therapeutics (From Chirmule et al. (2012)).

increasing dose (Tokuda et al. 1999). Since trastuzumab is rapidly internalized via receptor-mediated endocytosis after binding to HER2, its target structure on the cell surface, saturation of this elimination pathway is the likely cause for the observed dose-dependent pharmacokinetics (Kobayashi et al. 2002).

#### Modulation of Protein Disposition by the FcRn Receptor

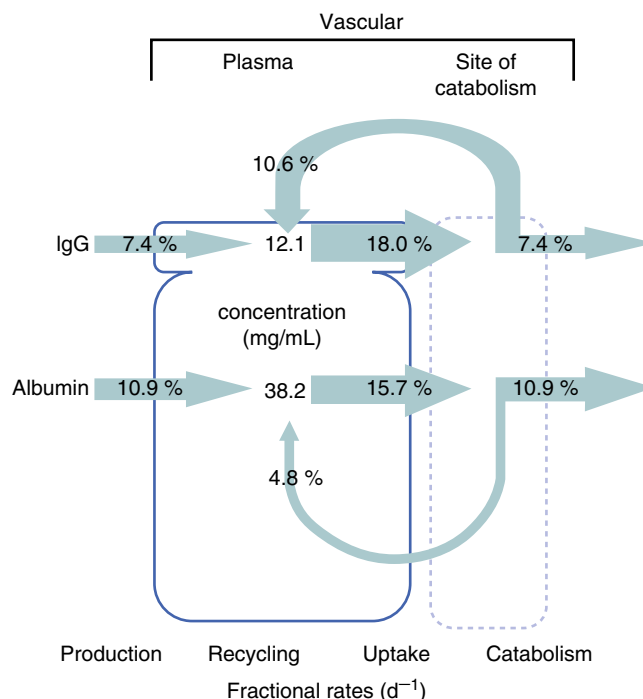
Immunoglobulin G (IgG)-based monoclonal antibodies and their derivatives as well as albumin conjugates constitute important classes of protein therapeutics with many members currently being under development or in



**Figure 5.6** ■ Nonlinear pharmacokinetics of macrophage colony-stimulating factor (M-CSF), presented as measured (*triangles* and *circles*; mean  $\pm$  SE) and modeled plasma bioactivity-time curves (*lines*) after intravenous injection of 0.1 mg/kg ( $n=5$ ), 1.0 mg/kg ( $n=3$ ), and 10 mg/kg ( $n=8$ ) in rats. Bioactivity is used as a substitute for concentration (From Bauer et al. (1994), with permission from American Society for Pharmacology and Experimental Therapeutics).

therapeutic use. Interaction with the neonatal Fc receptor (FcRn) constitutes a major component in the drug disposition of IgG molecules (Roopenian and Akilesh 2007). FcRn has been well-described in the transfer of passive humoral immunity from a mother to her fetus by transferring IgG across the placenta and the proximal small intestine via transcytosis. More importantly, interaction with FcRn in a variety of cells, including endothelial cells and monocytes, macrophages, and other dendritic cells, protects IgG from lysosomal catabolism and thus constitutes a salvage pathway for IgG molecules that have been internalized in these cell types. This is facilitated by intercepting IgG in the endosomes and recycling it to the systemic circulation (Wang et al. 2008). The interaction with the FcRn receptor thereby prolongs the elimination half-life of IgG, with a more pronounced effect the stronger the binding of the Fc fragment of the antibody is to the receptor: Based on the affinity of this binding interaction, human IgG1, IgG2, and IgG4 have a half-life in humans of 18–21 days, whereas the less strongly bound IgG3 has a half-life of only 7 days, and murine IgG in humans has a half-life of 1–2 days (Dirks and Meibohm 2010).

Similar to IgG, FcRn is also involved in the disposition of albumin molecules. The kinetics of IgG and albumin recycling are illustrated in Fig. 5.7. For IgG1, approximately 60 % of the molecules taken up into lysosomes are recycled, for albumin 30 %. As FcRn is responsible for the extended presence of IgG, albumin, and other Fc- or albumin-conjugated proteins in the systemic circulation, modulation of the interaction with FcRn allows to deliberately control the half-life of these molecules (Kim et al. 2007).



**Figure 5.7** ■ Effect of FcRn-mediated recycling on IgG and albumin turnover in humans expressed as fractional rates. Shown are homeostatic plasma concentrations (12.1 and 38.2 mg/mL), fractional catabolic rates (7.4 and 10.9 %/day), the FcRn-mediated fractional recycling rates (10.6 and 4.8 %/day), and the fractional production rates (7.4 and 10.9 %/day). The figure is to scale: areas for plasma amounts and arrow widths for rates (From Kim et al. (2007), with permission from Elsevier).

### ■ Immunogenicity and Protein Pharmacokinetics

The antigenic potential of protein therapeutics may lead to antibody formation against the protein therapeutic during chronic therapy. This is especially of concern if animal-derived proteins are applied in human clinical studies, but also if human proteins are used in animal studies during preclinical drug development. Chapter 6 discusses in detail the phenomenon of immunogenicity and its consequences for the pharmacotherapy with protein therapeutics.

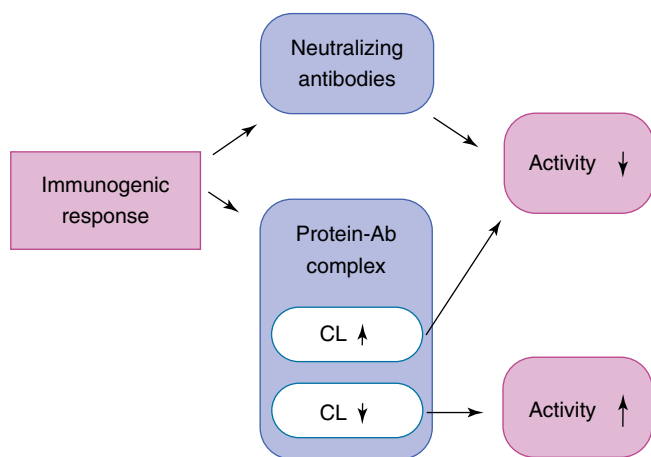
The formation of anti-drug antibodies (ADA) against a therapeutic protein may not only modulate or even obliterate the biological activity of a protein drug, but may also modify its pharmacokinetic profile. In addition, ADA-drug complex formation may lead to immune complex-mediated toxicity, particularly if the complexes get deposited in a specific organ or tissue. Glomerulonephritis has, for example, been observed after deposition of ADA-protein drug complexes in the renal glomeruli of Cynomolgus monkeys after intramuscular administration of rhINF- $\gamma$ . Similar to other circulating immune complexes, ADA-protein drug complexes may trigger the regular endogenous elimination pathways for these complexes, which consist of

uptake and lysosomal degradation by the reticuloendothelial system. This process has been primarily described for the liver and the spleen and seems to be mediated by Fc $\gamma$  receptors.

The ADA formation may either lead to the formation of clearing ADA, that increase the clearance of the protein therapeutic, or sustaining ADA that decrease the clearance of the protein therapeutic (Fig. 5.8). For clearing ADA, the immune complex formation triggers elimination via the reticuloendothelial system, which constitutes an additional elimination pathway for the protein therapeutic (Fig. 5.5). This increase in clearance for the protein therapeutic results in a decreased systemic exposure and reduced elimination half-life. A clearing effect of ADA is often observed for large protein therapeutics such as monoclonal antibodies (Richter et al. 1999).

For sustaining ADA, the immune complex formation does not trigger the regular endogenous elimination processes, but serves as a storage depot for the protein, thereby reducing its clearance, increasing its systemic exposure, and prolonging its half-life. This behavior has often been described for small protein therapeutics where the immune complex formation, for example, prevents glomerular filtration and subsequent tubular metabolism. The elimination half-life of the protein therapeutic then is often increased to approach that of IgG (Chirmule et al. 2012).

Whether ADA-protein drug complex formation results in clearing or sustaining effects seems to be a function of its physicochemical and structural properties, including size, antibody class, ADA-antigen ratio, characteristics of the antigen, and location of the binding epitopes. For example, both an increased and decreased clearance is possible for the same protein, dependent on the dose level administered. At low



**Figure 5.8** ■ Effect of anti-drug antibody formation on the pharmacokinetics and pharmacodynamics of therapeutic protein.

doses, protein-antibody complexes delay clearance because their elimination is slower than the unbound protein. In contrast, at high doses, higher levels of protein-antibody complex result in the formation of aggregates, which are cleared more rapidly than the unbound protein.

The enhancement of the clearance of cytokine interleukin-6 (IL-6) via administration of cocktails of three anti-IL-6 monoclonal antibodies was suggested as a therapeutic approach in cytokine-dependent diseases like multiple myeloma, B-cell lymphoma, and rheumatoid arthritis (Montero-Julian et al. 1995). The authors could show that, while the binding of one or two antibodies to the cytokine led to stabilization of the cytokine, simultaneous binding of three anti-IL-6 antibodies to three distinct epitopes induced rapid uptake of the complex by the liver and thus mediated a rapid elimination of IL-6 from the central compartment.

It should be emphasized that ADA formation is a polyclonal and usually relatively unspecific immune response to the protein therapeutic, with formation of different antibodies with variable binding affinities and epitope specificities, and that this ADA formation with its multiple-involved antibody species is different in different patients. Thus, reliable prediction of ADA formation and effects remains elusive at the current time (Chirmule et al. 2012).

The immunogenicity of protein therapeutics is also dependent on the route of administration. Extravascular injection is known to stimulate antibody formation more than IV application, which is most likely caused by the increased immunogenicity of protein aggregates and precipitates formed at the injection site. Further details on this aspect of immunogenicity are discussed in Chap. 6.

### ■ Species Specificity and Allometric Scaling

Peptides and proteins often exhibit distinct species specificity with regard to structure and activity. Peptides and proteins with identical physiological function may have different amino acid sequences in different species and may have no activity or be even immunogenic if used in a different species. The extent of glycosylation and/or sialylation of a protein molecule is another factor of species differences, e.g., for interferon- $\alpha$  or erythropoietin, which may not only alter its efficacy and immunogenicity (see Chap. 6) but also the drug's clearance.

Projecting human pharmacokinetic behavior for therapeutic proteins based on data in preclinical species is often performed using allometric approaches. Allometry is a methodology used to relate morphology and body function to the size of an organism. Allometric scaling is an empirical technique to predict body functions based on body size. Allometric scaling has found

wide application in drug development, especially to predict pharmacokinetic parameters in humans based on the corresponding parameters in several animal species and the body size differences among these species and humans. Multiple allometric scaling approaches have been described with variable success rates, predominantly during the transition from pre-clinical to clinical drug development (Dedrick 1973; Boxenbaum 1982; Mahmood and Balian 1999; Mahmood 2002). In the most frequently used approach, pharmacokinetic parameters between different species are related via body weight using a power function:

$$P = a \cdot W^b$$

where  $P$  is the pharmacokinetic parameter scaled,  $W$  is the body weight in kg,  $a$  is the allometric coefficient, and  $b$  is the allometric exponent.  $a$  and  $b$  are specific constants for each parameter of a compound. General tendencies for the allometric exponent are 0.75 for rate constants (i.e., clearance, elimination rate constant), 1 for volumes of distribution, and 0.25 for half-lives. More recently, allometric approaches are being complemented by physiologically based pharmacokinetic modeling.

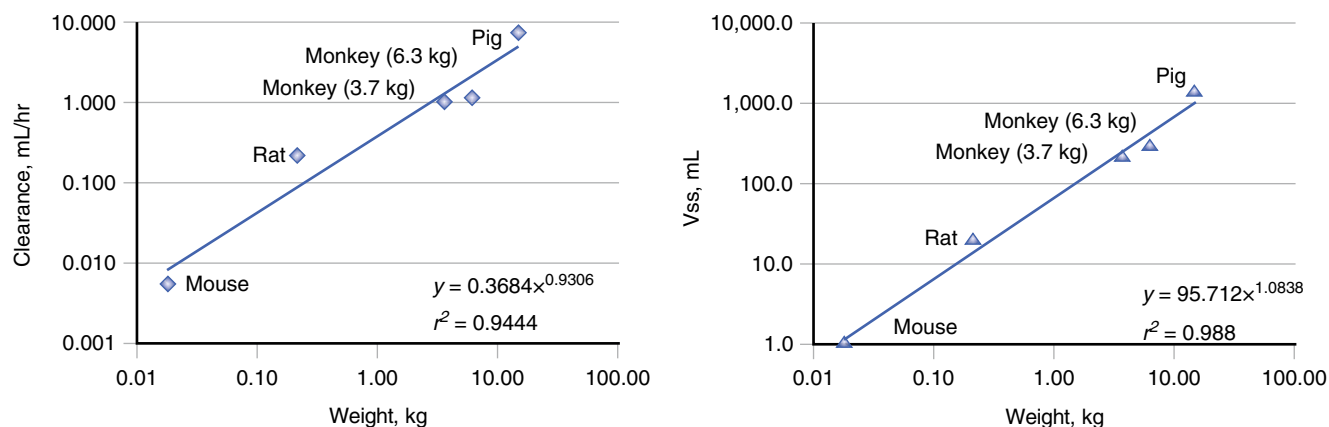
For most traditional small-molecule drugs, allometric scaling is often imprecise, especially if hepatic metabolism is a major elimination pathway and/or if there are interspecies differences in metabolism. For peptides and proteins, however, allometric scaling has frequently proven to be much more precise and reliable if their disposition is governed by relatively unspecific proteolytic degradation pathways. The reason is probably the similarity in handling peptides and proteins among different mammalian species (Wills and Ferraiolo 1992). Clearance and volume of distribution

of numerous therapeutically used proteins like growth hormone or t-PA follow a well-defined, weight-dependent physiologic relationship between lab animals and humans. This allows relatively precise quantitative predictions for their pharmacokinetic behavior in humans based on preclinical findings (Mordenti et al. 1991).

Figure 5.9, for example, shows allometric plots for the clearance and volume of distribution of a P-selectin antagonist, P-selectin glycoprotein ligand-1, for the treatment of P-selectin-mediated diseases such as thrombosis, reperfusion injury, and deep vein thrombosis. The protein's human pharmacokinetic parameters could accurately be predicted using allometric power functions based on data from four species: mouse, rat, monkey, and pig (Khor et al. 2000).

Recent work on scaling the pharmacokinetics of monoclonal antibodies has suggested that allometric scaling from one nonhuman primate species, in this case the *Cynomolgus* monkey, using an allometric exponent of 0.85 might be superior to traditional allometric scaling approaches (Deng et al. 2011).

In any case, successful allometric scaling seems so far largely limited to unspecific protein elimination pathways. Once interactions with specific receptors are involved in drug disposition, for example, in receptor-mediated processes or target-mediated drug disposition, then allometric approaches oftentimes fail to scale drug disposition of therapeutic proteins across species due to differences in binding affinity and specificity, as well as expression and turnover kinetics of the involved receptors and targets in different species. In this situation, it becomes especially important to only consider for scaling preclinical pharmacokinetic data from "relevant" animal species for which the therapeutic protein



**Figure 5.9** ■ Allometric plots of the pharmacokinetic parameter clearance and volume of distribution at steady state ( $V_{ss}$ ) for the P-selectin antagonist rPSGL-Ig. Each data point within the plot represents an averaged value of the respective pharmacokinetic parameter in one of five species: mouse, rat, monkey (3.7 kg), monkey, (6.3 kg) and pig, respectively. The solid line is the best fit with a power function to relate pharmacokinetic parameters to body weight (Khor et al. 2000; with permission from American Society for Pharmacology and Experimental Therapeutics).

shows cross-reactivity between animal and human receptors or targets.

It needs to be emphasized that allometric scaling techniques are useful tools for predicting a dose that will assist in the planning of dose-ranging studies, including first-in-man studies, but are not a replacement for such studies. The advantage of including such dose prediction in the protocol design of dose-ranging studies is that a smaller number of doses need to be tested before finding the final dose level. Interspecies dose predictions simply narrow the range of doses in the initial pharmacological efficacy studies, the animal toxicology studies, and the human safety and efficacy studies.

### ■ Chemical Modifications for Optimizing the Pharmacokinetics of Protein Therapeutics

In recent years, approaches modifying the molecular structure of protein therapeutics have repeatedly been applied to affect the immunogenicity, pharmacokinetics, and/or pharmacodynamics of protein drugs (Kontermann 2012). These approaches include the addition, deletion, or exchange of selected amino acids within the protein's sequence, synthesis of truncated proteins with a reduced amino acid sequence, glycosylation or deglycosylation, and covalent linkage to polymers (Veronese and Caliceti 2006). The latter approach has been used for several protein therapeutics by linking them to monomethoxy polyethylene glycol (PEG) molecules of various chain lengths in a process called PEGylation (Caliceti and Veronese 2003).

The conjugation of high polymeric mass to protein drugs is generally aimed at preventing the protein being recognized by the immune system as well as reducing its elimination via glomerular filtration or proteolytic enzymes, thereby prolonging the often-times relatively short elimination half-life of endogenous proteins. Conjugation of protein drugs with PEG chains increases their molecular weight, but because of the attraction of water molecules by PEG even more their hydrodynamic volume, this in turn results in a reduced renal clearance and restricted volume of distribution. PEGylation can also shield antigenic determinants on the protein drug from detection by the immune system through steric hindrance (Walsh et al. 2003). Similarly, amino acid sequences sensitive towards proteolytic degradation may be shielded against protease attack. By adding a large, hydrophilic molecule to the protein, PEGylation can also increase drug solubility (Molineux 2003).

PEGylation has been used to improve the therapeutic properties of numerous protein therapeutics including interferon- $\alpha$ , asparaginase, and filgrastim. More details on the general concept of PEGylation and its specific application for protein therapeutics can be found in Chap. 21.

The therapeutic application of L-asparaginase in the treatment of acute lymphoblastic leukemia has been hampered by its strong immunogenicity with allergic reactions occurring in 33–75 % of treated patients in various studies. The development of pegaspargase, a PEGylated form of L-asparaginase, is a successful example for overcoming this high rate of allergic reactions towards L-asparaginase using PEG conjugation techniques (Graham 2003). Pegaspargase is well-tolerated compared to L-asparaginase, with 3–10 % of the treated patients experiencing clinical allergic reactions.

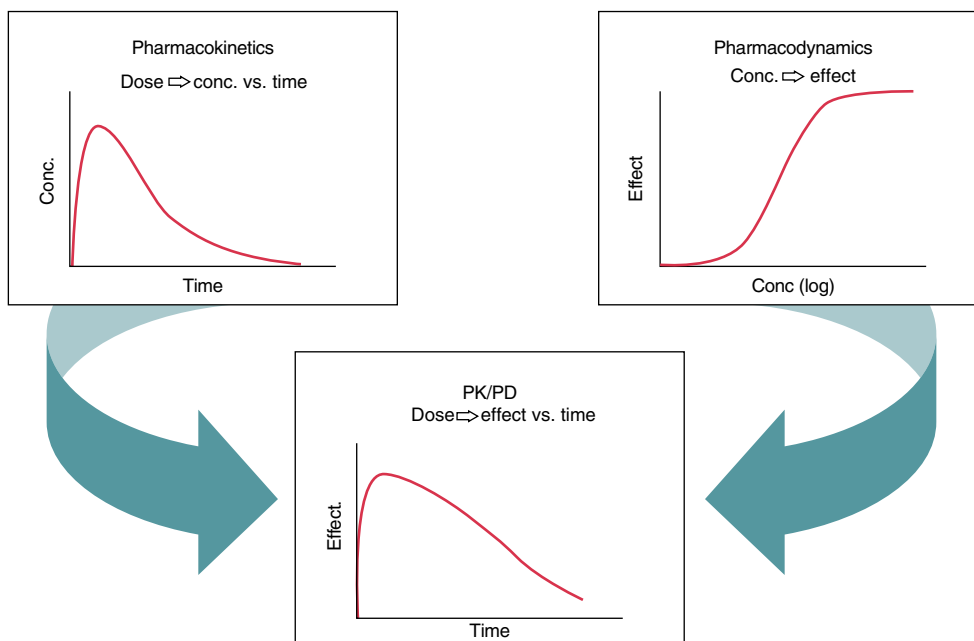
Pegfilgrastim is the PEGylated version of the granulocyte colony-stimulating factor filgrastim, which is administered for the management of chemotherapy-induced neutropenia. PEGylation minimizes filgrastim's renal clearance by glomerular filtration, thereby making neutrophil-mediated clearance the predominant route of elimination. Thus, PEGylation of filgrastim results in so-called self-regulating pharmacokinetics since pegfilgrastim has a reduced clearance and thus prolonged half-life and more sustained duration of action in a neutropenic compared to a normal patient because only few mature neutrophils are available to mediate its elimination (Zamboni 2003).

The hematopoietic growth factor darbepoetin- $\alpha$  is an example of a chemically modified endogenous protein with altered glycosylation pattern. It is a glycosylation analogue of human erythropoietin, with two additional N-linked oligosaccharide chains (five in total) (Mould et al. 1999). The additional N-glycosylation sites were made available through substitution of five amino acid residues in the peptide backbone of erythropoietin, thereby increasing the molecular weight from 30 to 37 kDa. Darbepoetin- $\alpha$  has a substantially modified pharmacokinetic profile compared to erythropoietin, resulting in a threefold longer serum half-life that allows for reduced dosing frequency (Macdougall et al. 1999). More details on hematopoietic growth factors, including erythropoietin and darbepoetin- $\alpha$ , are provided in Chap. 18.

## PHARMACODYNAMICS OF PROTEIN THERAPEUTICS

Protein therapeutics are usually highly potent compounds with steep dose-effect curves as they are targeted therapies towards a specific, well-described pharmacologic structure or mechanism. Thus, a careful characterization of the concentration-effect relationship, i.e., the pharmacodynamics, is especially desirable for protein therapeutics (Tabrizi and Roskos 2006). Combination of pharmacodynamics with pharmacokinetics by integrated pharmacokinetic-pharmacodynamic modeling (PK/PD modeling) adds an additional level of complexity that





**Figure 5.10** ■ General concept of PK/PD modeling. Pharmacokinetic-pharmacodynamic (PK/PD) modeling combines a pharmacokinetic model component that describes the time course of drug in plasma and a pharmacodynamic model component that relates the plasma concentration to the drug effect in order to describe the time course of the effect intensity resulting from the administration of a certain dosage regimen (From Derendorf and Meibohm (1999)).

allows furthermore characterization of the dose-exposure-response relationship of a drug and a continuous description of the time course of effect intensity directly resulting from the administration of a certain dosage regimen (Fig. 5.10) (Meibohm and Derendorf 1997; Derendorf and Meibohm 1999).

PK/PD modeling is a technique that combines the two classical pharmacologic disciplines of pharmacokinetics and pharmacodynamics. It integrates a pharmacokinetic and a pharmacodynamic model component into one set of mathematical expressions that allows the description of the time course of effect intensity in response to administration of a drug dose. This so-called integrated PK/PD model allows deriving pharmacokinetic and pharmacodynamic model parameters that characterize the dose-concentration-effect relationship for a specific drug based on measured concentration and effect data. In addition, it allows simulation of the time course of effect intensity for dosage regimens of a drug beyond actually measured data, within the constraints of the validity of the model assumptions for the simulated condition. Addition of a statistical model component describing inter- and intraindividual variation in model parameters allows expanding PK/PD models to describe time courses of effect intensity not only for individual subjects, but also for whole populations of subjects.

Integrated pharmacokinetic-pharmacodynamic (PK/PD) modeling approaches have widely been

applied for the characterization of protein therapeutics (Tabrizi and Roskos 2006). Embedded in a model-based drug development approach, modeling and simulation based on integrated PK/PD does not only provide a comprehensive summary of the available data, but also enables to test competing hypotheses regarding processes altered by the drug, allows making predictions of drug effects under new conditions, and facilitates to estimate inaccessible system variables (Meibohm and Derendorf 1997; Mager et al. 2003).

Mechanism-based PK/PD modeling appreciating the physiological events involved in the elaboration of the observed effect has been promoted as superior modeling approach as compared to empirical modeling, especially because it does not only describe observations but also offers some insight into the underlying biological processes involved and thus provides flexibility in extrapolating the model to other clinical situations (Levy 1994; Derendorf and Meibohm 1999; Suryawanshi et al. 2010). Since the molecular mechanism of action of a protein therapeutic is generally well-understood, it is often straightforward to transform this available knowledge into a mechanism-based PK/PD modeling approach that appropriately characterizes the real physiological process leading to the drug's therapeutic effect.

The relationship between exposure and response may be either simple or complex, and thus obvious or hidden. However, if no simple relationship is obvious,

it would be misleading to conclude a priori that no relationship exists at all rather than that it is not readily apparent (Levy 1986).

The application of PK/PD modeling is beneficial in all phases of preclinical and clinical drug development and has been endorsed by the pharmaceutical industry, academia, and regulatory agencies (Peck et al. 1994; Lesko et al. 2000; Sheiner and Steimer 2000; Meibohm and Derendorf 2002), most recently by the Critical Path Initiative of the US Food and Drug Administration (Lesko 2007). Thus, PK/PD concepts and model-based drug development play a pivotal role especially in the drug development process for biologics, and their widespread application supports a scientifically driven, evidence-based, and focused product development for protein therapeutics (Zhang et al. 2008).

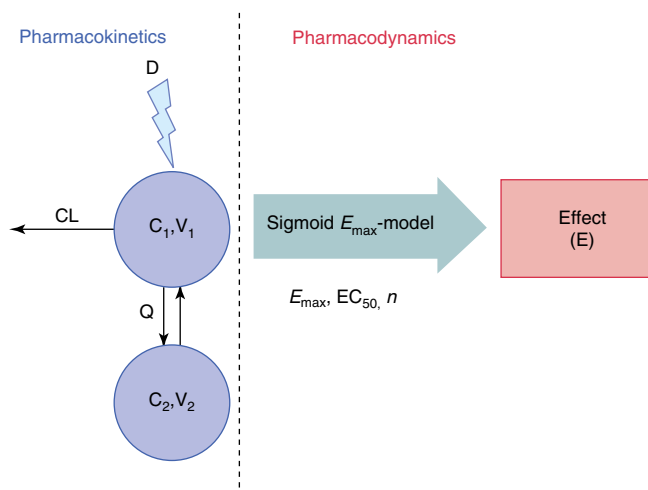
While a variety of PK/PD modeling approaches has been employed for biologics, we will in the following focus on five classes of approaches to illustrate the challenges and complexities, but also opportunities to characterize the pharmacodynamics of protein therapeutics:

- Direct link PK/PD models
- Indirect link PK/PD models
- Indirect response PK/PD models
- Cell life span models
- Complex response models

It should not be unmentioned, however, that PK/PD models for protein therapeutics are not only limited to continuous responses as shown in the following, but are also used for binary or graded responses. Binary responses are responses with only two outcome levels where a condition is either present or absent, e.g., dead versus alive. Graded or categorical responses have a set of predefined outcome levels, which may or may not be ordered, for example, the categories “mild,” “moderate,” and “severe” for a disease state. Lee et al. (2003), for example, used a logistic PK/PD modeling approach to link cumulative AUC of the anti-TNF- $\alpha$  protein etanercept with a binary response, the American College of Rheumatology response criterion of 20 % improvement (ARC20) in patients with rheumatoid arthritis.

### ■ Direct Link PK/PD Models

The concentration of a protein therapeutic is usually only quantified in plasma, serum, or blood, while the magnitude of the observed response is determined by the concentration of the protein drug at its effect site, the site of action in the target tissue (Meibohm and Derendorf 1997). Effect site concentrations, however, are usually not accessible for measurement, and plasma, serum, or blood concentrations are usually used as their substitute. The relationship between the drug concen-



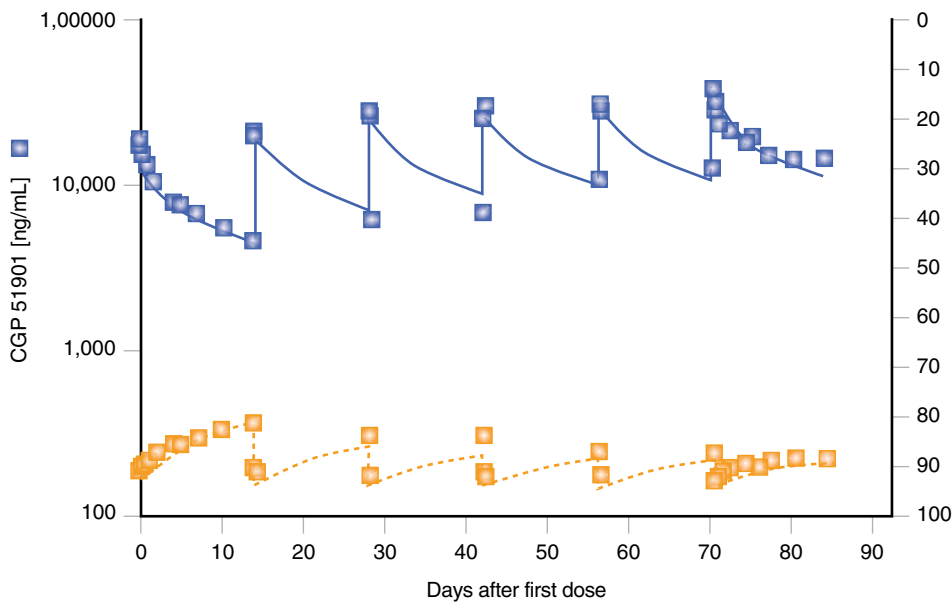
**Figure 5.11** ■ Schematic of a typical direct link PK/PD model. The PK model is a typical two-compartment model with a linear elimination clearance from the central compartment ( $CL$ ) and a distributional clearance ( $Q$ ).  $C_1$  and  $C_2$  are the concentrations in the central and peripheral compartments, and  $V_1$  and  $V_2$  are their respective volumes of distribution. The effect ( $E$ ) is directly linked to the concentration in the central compartment  $C_1$  via a sigmoid  $E_{max}$  model. The sigmoid  $E_{max}$  relationship is characterized by the pharmacodynamic parameters  $E_{max}$ , the maximum achievable effect,  $EC_{50}$ , the concentration of the drug that produced half of the maximum effect, and the Hill coefficient  $n$  as via the sigmoid  $E_{max}$  equation.

tration in plasma and at the effect site may either be constant or undergo time-dependent changes. If equilibrium between both concentrations is rapidly achieved or the site of action is within plasma, serum, or blood, there is practically a constant relationship between both concentrations with no temporal delay between plasma and effect site. In this case, measured plasma concentrations can directly serve as input for a pharmacodynamic model (Fig. 5.11). The most frequently used direct link pharmacodynamic model is a sigmoid  $E_{max}$  model:

$$E = \frac{E_{max} \cdot C^n}{EC_{50}^n + C^n}$$

with  $E_{max}$  as maximum achievable effect,  $C$  as drug concentration in plasma, and  $EC_{50}$  the concentration of the drug that produces half of the maximum effect. The Hill coefficient  $n$  is a shape factor that allows for an improved fit of the relationship to the observed data. As represented by the equation for the sigmoid  $E_{max}$  model, a direct link model directly connects measured concentration to the observed effect without any temporal delay (Derendorf and Meibohm 1999).

A direct link model was, for example, used to relate the serum concentration of the antihuman immunoglobulin E (IgE) antibody CGP 51901 for the treat-

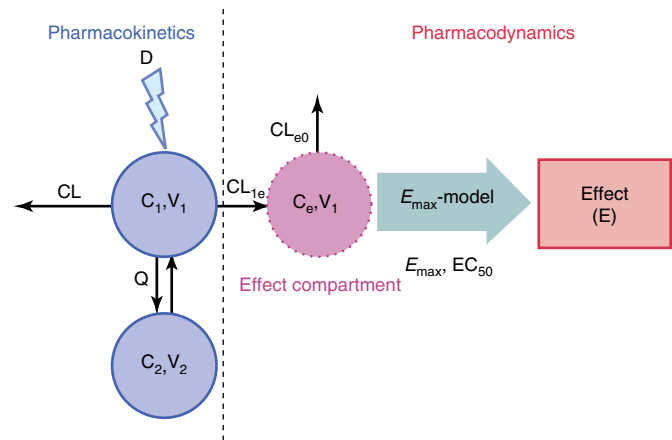


**Figure 5.12** ■ Observed (■) and model-predicted (—) serum concentration of the anti-human IgE antibody CGP 51901 and observed (■) and model-predicted (—) reduction of free IgE in one representative patient, given six IV doses of 60 mg biweekly. The predictions were modeled with a direct link PK/PD model (Modified from Racine-Poon et al. (1997); with permission from Macmillan Publishers Ltd.).

ment of seasonal allergic rhinitis to the reduction of free IgE via an inhibitory  $E_{\max}$  model (Fig. 5.12) (Racine-Poon et al. 1997). It should be noted that the peak and trough concentrations and effects are directly related and thus occur at the same times, respectively, without time delay. Similarly, a direct link model was used to relate the effect of recombinant interleukin-10 (IL-10) on the ex vivo release of the pro-inflammatory cytokines TNF- $\alpha$  and interleukin-1 $\beta$  in LPS-stimulated leukocytes (Radwanski et al. 1998). In the first case, the site of action and the sampling site for concentration measurements of the protein therapeutic were identical, i.e., in plasma, and so the direct link model was mechanistically well justified. In the second case, the effect was dependent on the IL-10 concentration on the cell surface of leukocytes where IL-10 interacts with its target receptor. Again sampling fluid and effect site were in instant equilibrium.

### ■ Indirect Link PK/PD Models

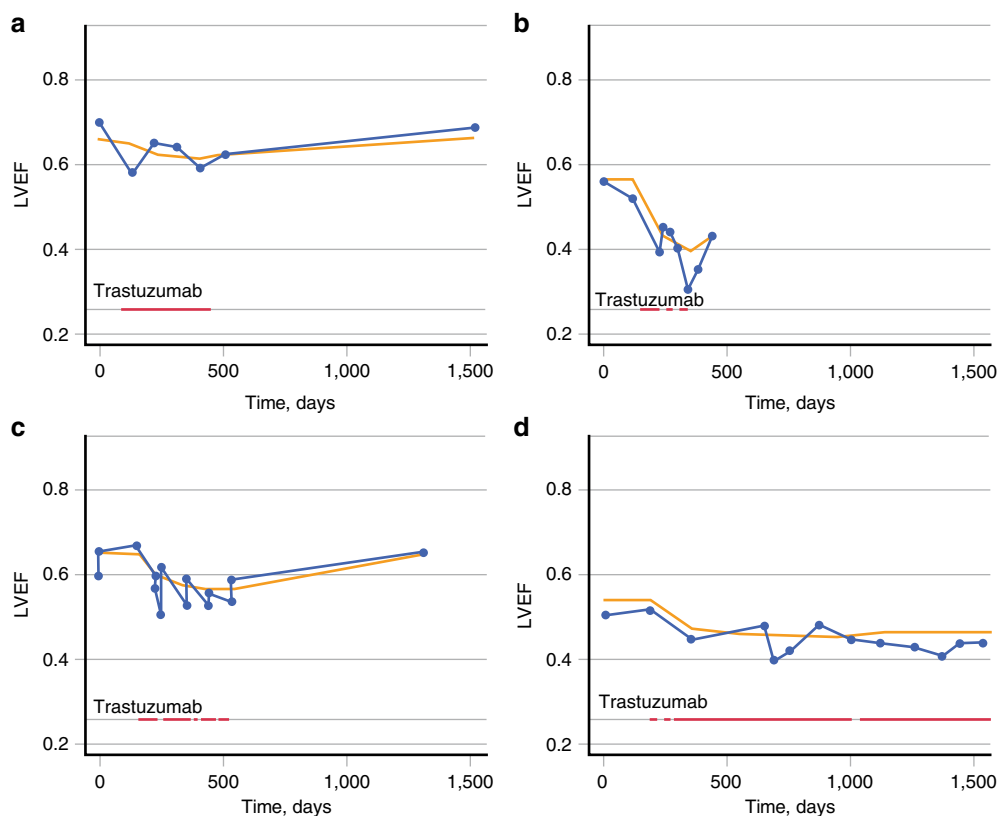
The concentration-effect relationship of many protein drugs, however, cannot be described by direct link PK/PD models, but is characterized by a temporal dissociation between the time courses of plasma concentration and effect. In this case, plasma concentration maxima occur before effect maxima; effect intensity may increase despite decreasing plasma concentrations and may persist beyond the time when drug concentrations in plasma are no longer detectable. The relationship between measured concentration and observed effect follows a counter-clockwise hysteresis loop. This phenomenon can either be caused by an indirect response mechanism (see next section) or by a distributional delay



**Figure 5.13** ■ Schematic of a typical indirect link PK/PD model. A hypothetical effect compartment is linked to the central compartment of a two-compartment pharmacokinetic model. The concentration in the effect compartment ( $C_e$ ) drives the intensity of the pharmacodynamic effect ( $E$ ) via an  $E_{\max}$  relationship.  $CL_{1e}$  is the transfer clearance from the central to the effect compartment,  $CL_{e0}$  the equilibrium clearance for the effect compartment. All other PK and PD parameters are identical to those used in Fig. 5.10.

between the drug concentrations in plasma and at the effect site.

The latter one can conceptually be described by an indirect link model, which attaches a hypothetical effect compartment to a pharmacokinetic compartment model (Fig. 5.13). The effect compartment addition to the pharmacokinetic model does not account for mass balance, i.e., no actual mass transfer is implemented in the pharmacokinetic part of the PK/PD model. Instead, drug transfer with respect to the effect compartment is defined by the time course of the effect itself (Sheiner



**Figure 5.14** ■ Observed (*blue circles*) individual and predicted (*yellow line*) left ventricular ejection fraction (LVEF) vs. time (days) in four typical patients. The timing of trastuzumab dosing is indicated by horizontal red bars. Data relating to (a) a patient for whom long-term recovery is demonstrated, (b) a patient for whom no long-term recovery data were available, (c) a patient with LVEF values measured by concurrent use of two different clinical methodologies, and (d) a patient under prolonged trastuzumab treatment (From van Hasselt et al. (2011), with permission from Macmillan Publishers Ltd.).

et al. 1979; Holford and Sheiner 1982). The effect-compartment approach, however, is necessary, as the effect site can be viewed as a small part of a pharmacokinetic compartment that from a pharmacokinetic point of view cannot be distinguished from other tissues within that compartment. The concentration in the effect compartment represents the active drug concentration at the effect site that is slowly equilibrating with the plasma and is usually linked to the effect via an  $E_{\max}$  model.

Although this PK/PD model is constructed with tissue distribution as the reason for the delay of the effect, the distribution clearance to the effect compartment can be interpreted differently, including other reasons of delay, such as transduction processes and secondary post-receptor events.

Pharmacotherapy with trastuzumab is associated with the occurrence of asymptomatic declines in left ventricular ejection fraction (LVEF) and the development of congestive heart failure in a small proportion of patients (van Hasselt et al. 2011). An indirect link model was applied to describe the cardiac dysfunction as an effect of trastuzumab exposure. A

simplified inhibitory  $E_{\max}$  model with  $E_{\max}$  fixed to 1 was used to relate trastuzumab concentration in the hypothetical effect compartment of Fig. 5.13 to LVEF decline. Figure 5.14 illustrates representative time courses for LVEF under trastuzumab therapy modeled with the indirect link PKPD model. The model-derived LVEF recovery half-life after trastuzumab treatment was estimated at 49.7 days, which is consistent with a reported mean time to normalization of 1.5 months. The developed PK/PD model may be useful in developing optimal treatment and cardiac monitoring strategies for patients under trastuzumab therapy.

### ■ Indirect Response PK/PD Models

The effect of most protein therapeutics, however, is not mediated via a direct interaction between drug concentration at the effect site and response systems but frequently involves several transduction processes that include at their rate-limiting step the stimulation or inhibition of a physiologic process, for example the synthesis or degradation of a molecular response mediator like a hormone or cytokine. In these cases, the time courses of plasma concentration

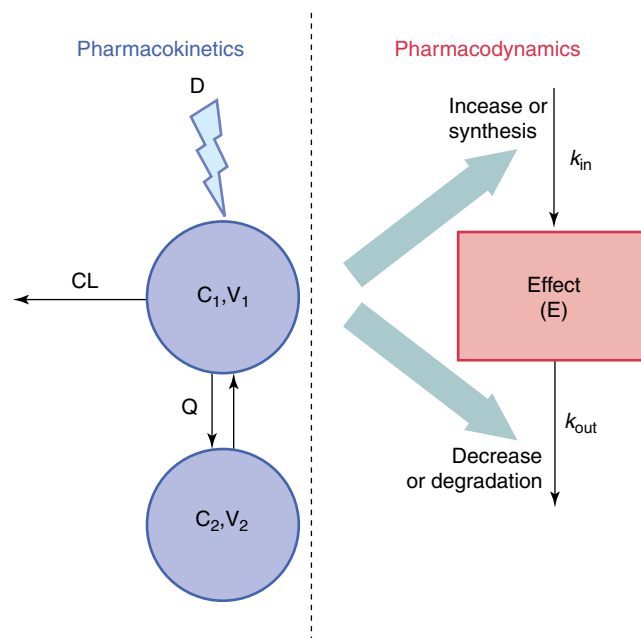
and effect are also dissociated resulting in counter-clockwise hysteresis for the concentration-effect relationship, but the underlying cause is not a distributional delay as for the indirect link models, but a time-consuming indirect response mechanism (Meibohm and Derendorf 1997).

Indirect response models generally describe the effect on a representative response parameter via the dynamic equilibrium between increase or synthesis and decrease or degradation of the response, with the former being a zero-order and the latter a first-order process (Fig. 5.15). The response itself can be modulated in one of four basic variants of the models. In each variant, the synthesis or degradation process of the response is either stimulated or inhibited as a function of the effect site concentration. A stimulatory or inhibitory  $E_{\max}$  model is used to describe the drug effect on the synthesis or degradation of the response (Dayneka et al. 1993; Sharma and Jusko 1998; Sun and Jusko 1999).

As indirect response models appreciate the underlying physiological events involved in the elaboration of the observed drug effect, their application is often preferred in PK/PD modeling as they have a mechanistic basis on the molecular and/or cellular level that often allows for extrapolating the model to other clinical situations.

An indirect response model was, for example, used in the evaluation of SB-240563, a humanized monoclonal antibody directed towards IL-5 in monkeys (Zia-Amirhosseini et al. 1999). IL-5 appears to play a significant role in the production, activation, and maturation of eosinophils. The delayed effect of SB-240563 on eosinophils is consistent with its mechanism of action via binding to and thus inactivation of IL-5. It was modeled using an indirect response model with inhibition of the production of response (eosinophils count) (Fig. 5.16). The obtained low  $EC_{50}$  value for reduction of circulating eosinophils combined with a long terminal half-life of the protein therapeutic of 13 days suggests the possibility of an infrequent dosing regimen for SB-240563 in the pharmacotherapy of disorders with increased eosinophil function, such as asthma.

Indirect response models were also used for the effect of growth hormone on endogenous IGF-1 concentration (Sun et al. 1999), as well as the effect of epoetin- $\alpha$  on two response parameters, free ferritin concentration and soluble transferrin receptor concentration (Bressolle et al. 1997). Similarly, a modified indirect response model was used to relate the concentration of the humanized anti-factor IX antibody SB-249417 to factor IX activity in Cynomolgus monkeys as well as humans (Benincosa et al. 2000; Chow et al. 2002). The drug effect in this model was introduced by interrupting the natural degradation of factor IX by sequestration of factor IX by the antibody.



Indirect response model subtypes

Subtype I:  
inhibition of synthesis ( $k_{in}$ )

$$\frac{dE}{dt} = k_{in} \cdot \left[ 1 - \frac{C_1}{EC_{50} + C_1} \right] - k_{out} \cdot E$$

Subtype III:  
stimulation of synthesis ( $k_{in}$ )

$$\frac{dE}{dt} = k_{in} \cdot \left[ 1 + \frac{E_{max} \cdot C_1}{EC_{50} + C_1} \right] - k_{out} \cdot E$$

Subtype II:  
inhibition of degradation ( $k_{out}$ )

$$\frac{dE}{dt} = k_{in} - k_{out} \cdot \left[ 1 - \frac{C_1}{EC_{50} + C_1} \right] \cdot E$$

Subtype IV:  
stimulation of degradation ( $k_{out}$ )

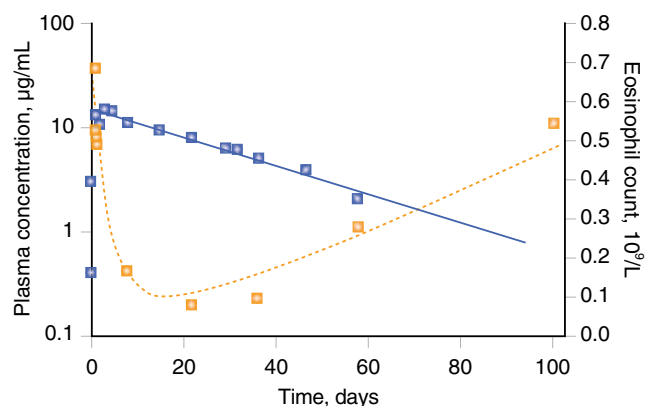
$$\frac{dE}{dt} = k_{in} - k_{out} \cdot \left[ 1 + \frac{E_{max} \cdot C_1}{EC_{50} + C_1} \right] \cdot E$$

**Figure 5.15** ■ Schematic of a typical indirect response PK/PD model. The effect measure ( $E$ ) is maintained by a dynamic equilibrium between an increase or synthesis and a decrease or degradation process. The former is modeled by a zero-order process with rate constant  $k_{in}$ , the latter by a first-order process with rate constant  $k_{out}$ . Thus, the rate of change in effect ( $dE/dt$ ) is expressed as the difference between synthesis rate ( $k_{in}$ ) and degradation rate ( $k_{out}$  times  $E$ ). Drug concentration ( $C_1$ ) can stimulate or inhibit the synthesis or the degradation process for the effect ( $E$ ) via an  $E_{\max}$  relationship using one of four subtypes (model I, II, III or IV) of the indirect response model. The pharmacokinetic model and all other PK and PD parameters are identical to those used in Fig. 5.10.

### ■ Cell Life Span Models

A sizable number of protein therapeutics exert their pharmacologic effect through direct or indirect modulation of blood and/or immune cell types. For these kinds of therapeutics, cell life span models have been proven useful to capture their exposure-response

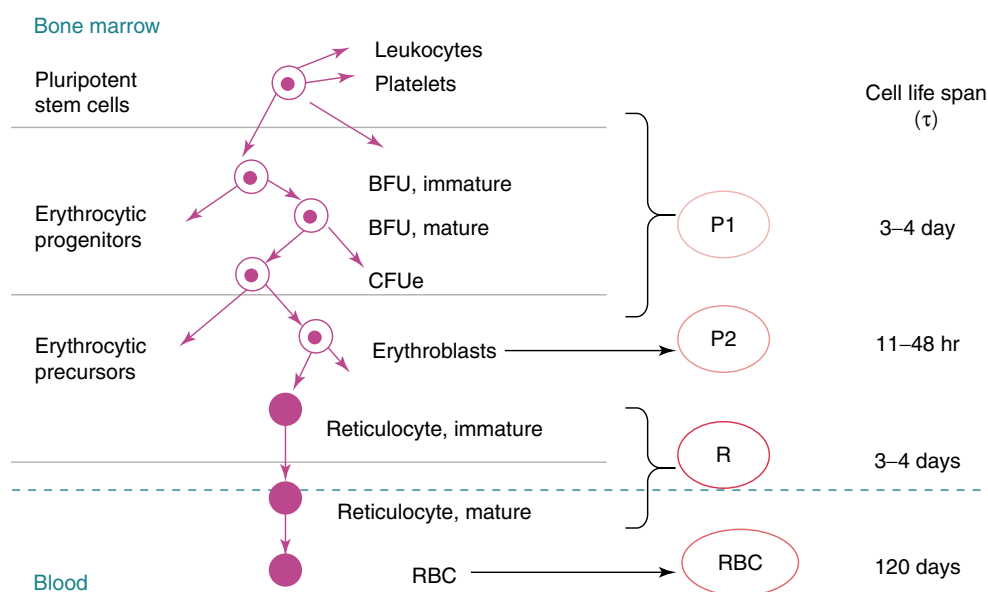
relationship and describe and predict drug effects (Perez-Ruixo et al. 2005). Cell life span models are mechanism-based, physiologic PK/PD models that are established based on the sequential maturation and life span-driven cell turnover of their affected cell types and progenitor cell populations. Cell life span model is especially widely used for characterizing the dose-



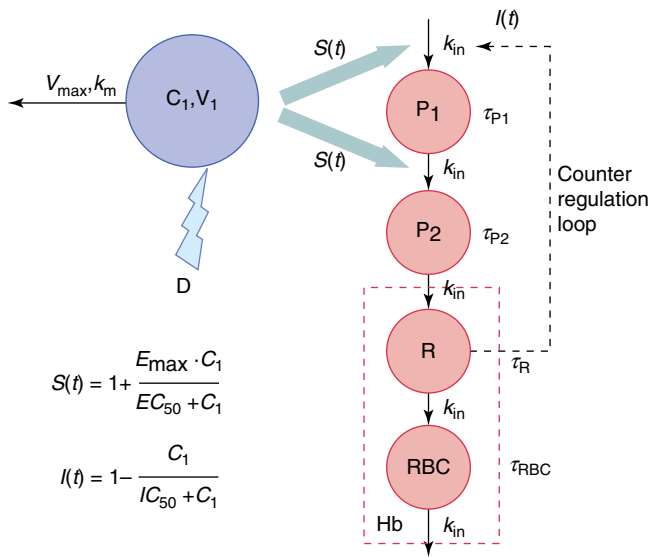
**Figure 5.16** ■ Model-predicted and observed plasma concentration (observed, *blue circles*; predicted, *solid blue line*) and eosinophil count (observed, *orange squares*; predicted, *dashed orange line*) following SC administration of 1 mg/kg of the anti-IL-5 humanized monoclonal antibody SB-240563 in a Cynomolgus monkey. A mechanism-based indirect response PK/PD model was used to describe eosinophil count as a function of SB-240563 plasma concentration. The reduction in eosinophil count in peripheral blood (as effect  $E$ ) was modeled as a reduction of the recruitment of eosinophils from the bone, i.e., an inhibition of the production rate  $k_{in}$  using the indirect response model of subtype I (see Fig. 5.15) (Zia-Amirhosseini et al. 1999; with permission from American Society for Pharmacology and Experimental Therapeutics).

concentration-effect relationships of hematopoietic growth factors aimed at modifying erythropoiesis, granulopoiesis, or thrombopoiesis (Perez-Ruixo et al. 2005; Agoram et al. 2006). The fixed physiologic time span for the maturation of precursor cells is the major reason for the prolonged delay between drug administration and the observed response, i.e., change in the cell count in peripheral blood. Cell life span models accommodate this sequential maturation of several precursor cell populations at fixed physiologic time intervals by a series of transit compartments linked via first- or zero-order processes with a common transfer rate constant.

A cell life span model was, for example, used to describe the effect of a multiple dose regimen of erythropoietin (EPO) 600 IU/kg given once weekly by SC injection (Ramakrishnan et al. 2004). The process of erythropoiesis and the applied PK/PD approach including a cell life span model are depicted in Figs. 5.17 and 5.18, respectively. EPO is known to stimulate the production and release of reticulocytes from the bone marrow. The EPO effect was modeled as stimulation of the maturation of two progenitor cell populations (P1 and P2 in Fig. 5.17), including also a feedback inhibition between erythrocyte count and progenitor proliferation. Development and turnover of the subsequent populations of reticulocytes and erythrocytes was modeled, taking into account their life spans as listed in Fig. 5.17. The hemoglobin concentration as pharmacodynamic target parameter was calculated from erythrocyte and reticulocyte counts and hemoglobin content per cell. Figure 5.19 shows the resulting time courses in reticulocyte count, erythrocyte count, and hemoglobin concentration.



**Figure 5.17** ■ Process of erythropoiesis. Erythropoietin stimulates the proliferation and differentiation of the erythrocyte progenitors (*BFU* burst-forming unit erythroid, *CFUe* colony-forming unit erythroid) as well as the erythroblasts in the bone marrow. The life spans ( $\tau$ ) of the various cell populations are indicated at the right (From Ramakrishnan et al. (2004), with permission from John Wiley & Sons, Inc. Copyright American College of Clinical Pharmacology 2004.).



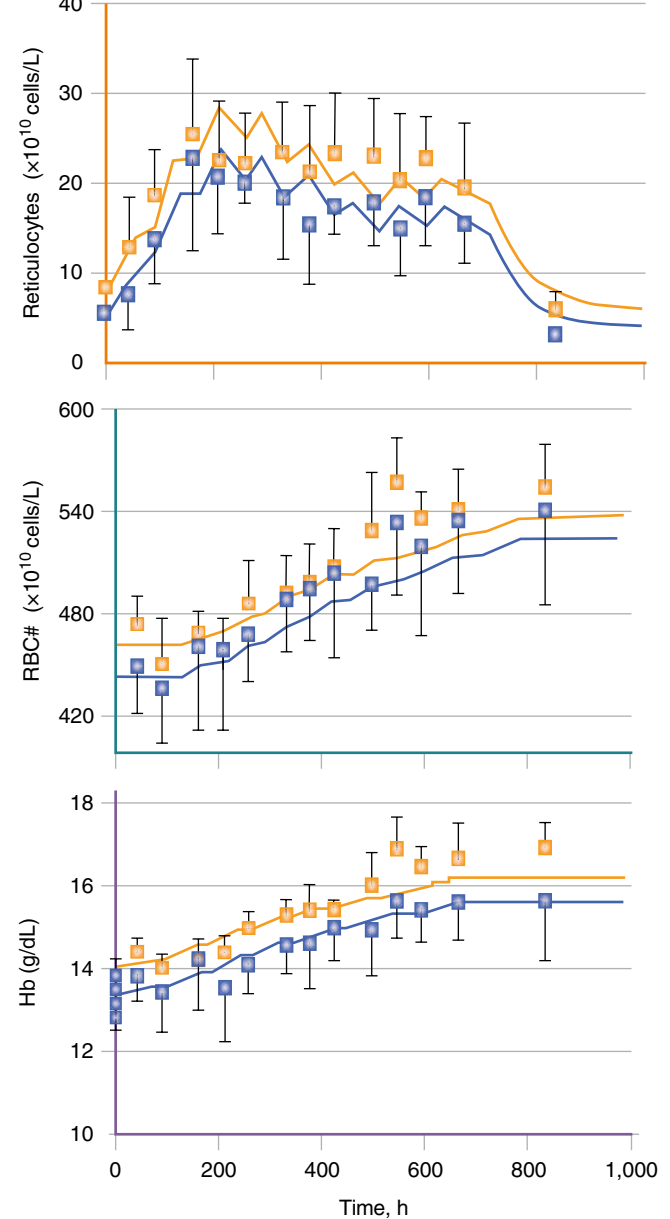
**Figure 5.18** ■ A PK/PD model describing the disposition of recombinant human erythropoietin and effects on reticulocyte count, red blood cell count, and hemoglobin concentration. The PK model is a one-compartment model with Michaelis-Menten type elimination ( $K_m$ ,  $V_{\max}$ ) from the central compartment. The PD model is a cell life span model with four sequential cell compartments, representing erythroid progenitor cells ( $P_1$ ), erythroblasts ( $P_2$ ), reticulocytes ( $R$ ), and red blood cells ( $RBC$ ).  $\tau_{P_1}$ ,  $\tau_{P_2}$ ,  $\tau_R$ , and  $\tau_{RBC}$  are the corresponding cell life spans,  $k_{in}$  the common zero-order transfer rate between cell compartments. The target parameter hemoglobin in the blood ( $Hb$ ) is calculated from the reticulocyte and red blood cell count and the hemoglobin content per cell. The effect of erythropoietin is modeled as a stimulation of the production of both precursor cell populations ( $P_1$  and  $P_2$ ) in the bone marrow with the stimulation function  $S(t)$ .  $E_{\max}$  is the maximum possible stimulation of reticulocyte production by erythropoietin,  $EC_{50}$  the plasma concentration of erythropoietin that produced half-maximum stimulation. A counter-regulatory feedback loop represents the feedback inhibition of reticulocytes on their own production by reducing the production rate of cells in the  $P_1$  compartment via the inhibitory function  $I(t)$ .  $IC_{50}$  is the reticulocyte count that produced half of complete inhibition (Modified from Ramakrishnan et al. (2004)).

### ■ Complex Response Models

Since the effect of most protein therapeutics is mediated via complex regulatory physiologic processes including feedback mechanisms and/or tolerance phenomena, some PK/PD models that have been described for protein drugs are much more sophisticated than the four classes of models previously discussed.

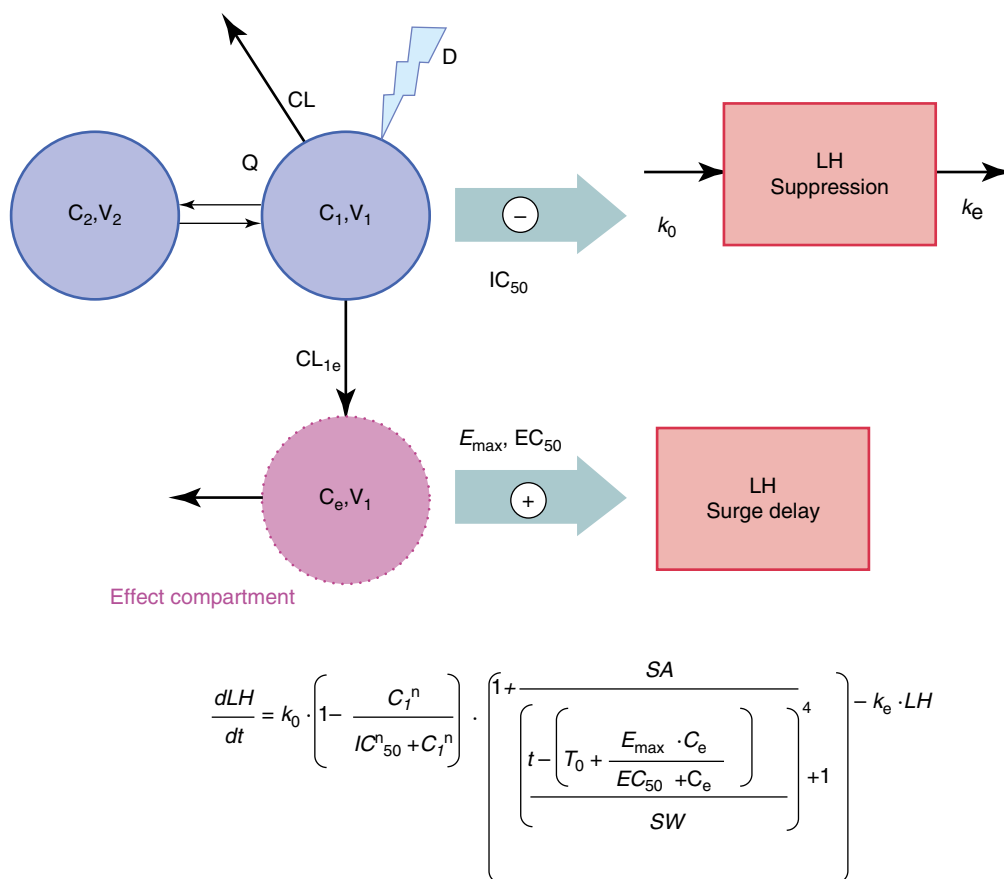
One example of such a complex modeling approach has been developed for the therapeutic effects of the luteinizing hormone-releasing hormone (LH-RH) antagonist cetrorelix (Nagaraja et al. 2000, 2003; Pechstein et al. 2000). Cetrorelix is used for the prevention of premature ovulation in women undergoing controlled ovarian stimulation in in vitro

fertilization protocols. LH-RH antagonists suppress



**Figure 5.19** ■ Reticulocyte, red blood cell ( $RBC$ ), and hemoglobin ( $Hb$ ) time courses after multiple SC dosing of 600 IU/kg/weeks recombinant human erythropoietin. Orange and blue squares represent data for males and females, whereas the orange and blue lines for the reticulocytes are model fittings. The lines in the RBC and Hb panels are the predictions using the model-fitted curves for the reticulocytes and the life span parameters (From Ramakrishnan et al. (2004), with permission from John Wiley & Sons, Inc. Copyright American College of Clinical Pharmacology 2004.).

fertilization protocols. LH-RH antagonists suppress the LH levels and delay the occurrence of the preovulatory LH surge, and this delay is thought to be responsible for postponing ovulation. The suppression of LH was modeled in the PK/PD approach with an indirect-response model approach directly linked

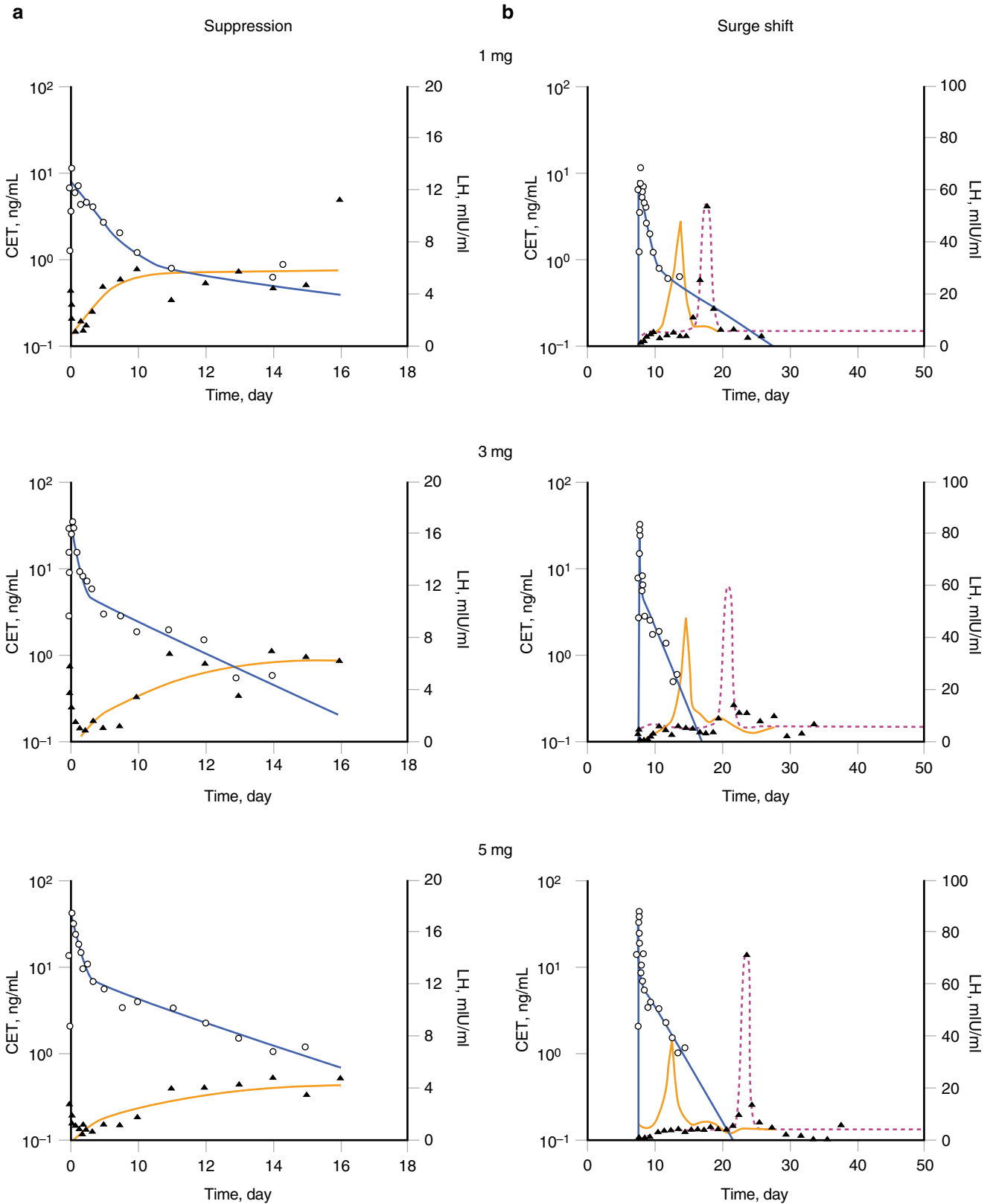


**Figure 5.20** ■ A PK/PD model for the combined effect of the luteinizing hormone-releasing hormone (LH-RH) antagonist cetorelix on luteinizing hormone (LH) suppression and delay of the LH surge. The PK model is a two-compartment model identical to the model described in Fig. 5.10. The PD model consists of two components: an indirect response model of subtype I to model the suppression of LH by cetorelix and an indirect link model that models the delay in LH surge as a function of the cetorelix concentration in a hypothetical effect compartment. Both PD model components are combined in the provided mathematical expression that described the rate of change in LH concentration ( $dLH/dt$ ) as a function of both processes. LH is the LH concentration,  $k_0$  and  $k_e$  are the zero-order production rate and first-order elimination rate constants for LH at baseline,  $C_1$  and  $C_e$  are the cetorelix concentrations in plasma and a hypothetical effect compartment, respectively, SA is the LH surge amplitude,  $t$  is the study time in terms of cycle day,  $T_0$  is the study time in terms of cycle day at which the peak occurs under baseline conditions, SW is the width of the peak in time units,  $IC_{50}$  is the cetorelix concentration that suppresses LH levels by 50 %,  $n$  is the Hill factor fixed at 2,  $E_{max}$  is the maximum delay in LH surge, and  $EC_{50}$  is the cetorelix concentrations that produces half of  $E_{max}$ . Baseline data analysis indicated that the slope of the surge peak and SW were best fixed at values of 4 and 24 h, respectively. Other PK and PD parameters are identical to those used in Fig. 5.12 (Modified from Nagaraja et al. (2000)).

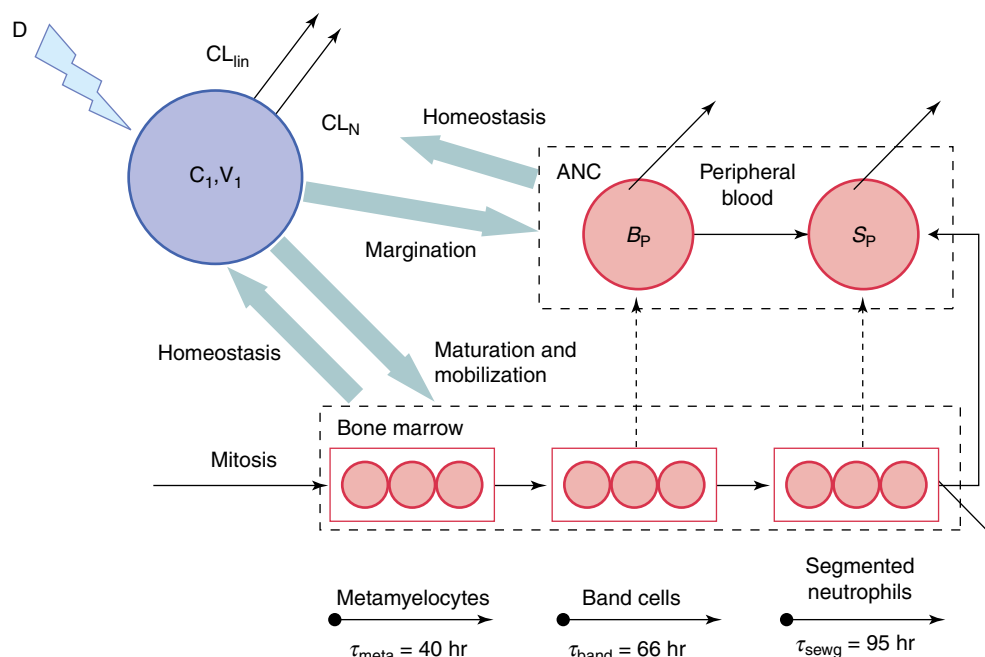
to cetorelix plasma concentrations (Fig. 5.20) (Nagaraja et al. 2003). The shift in LH surge was linked to cetorelix concentration with a simple  $E_{max}$  function via a hypothetical effect compartment to account for a delay in response via complex signal transduction steps of unknown mechanism of action. Figure 5.21 shows the application of this PK/PD model to characterize the LH suppression and LH surge delay after subcutaneous administration of cetorelix to groups of 12 women at different dose levels. The analysis revealed a marked dose–response relationship for the LH surge and thus predictability of drug response to cetorelix (Nagaraja et al. 2000).

Another example for a complex PK/PD model is the cytokinetic model used to describe the effect of pegfilgrastim on the granulocyte count in peripheral blood (Roskos et al. 2006; Yang 2006). Pegfilgrastim is a PEGylated form of the human granulocyte colony-stimulating factor (G-CSF) analogue filgrastim. Pegfilgrastim, like filgrastim and G-CSF, stimulates the activation, proliferation, and differentiation of neutrophil progenitor cells and enhances the functions of mature neutrophils (Roskos et al. 2006). Pegfilgrastim is mainly used as supportive care to ameliorate and enhance recovery from neutropenia secondary to cancer chemotherapy regimens. As already discussed in





**Figure 5.21** ■ Pharmacokinetic and pharmacodynamic relationship between cetorelix (CET; ○) and LH concentrations (▲) after single doses of 1, 3, and 5 mg cetorelix in representative subjects. Cetorelix and LH concentrations were modeled using the PK/PD model presented in Fig. 5.20. *Left panel: LH suppression. Right panel: LH suppression and LH surge profiles.* The *solid blue line* represents the model-fitted cetorelix concentration, the *dashed purple line* the model-fitted LH concentration, and the *solid orange line* in the *right panels* the pretreatment LH profile (not fitted). The cetorelix-dependent delay in LH surge is visible as the rightward shift of the LH surge profile under cetorelix therapy compared to the respective pretreatment LH profile (From Nagaraja et al. (2000), with permission from Macmillan Publishers Ltd.).



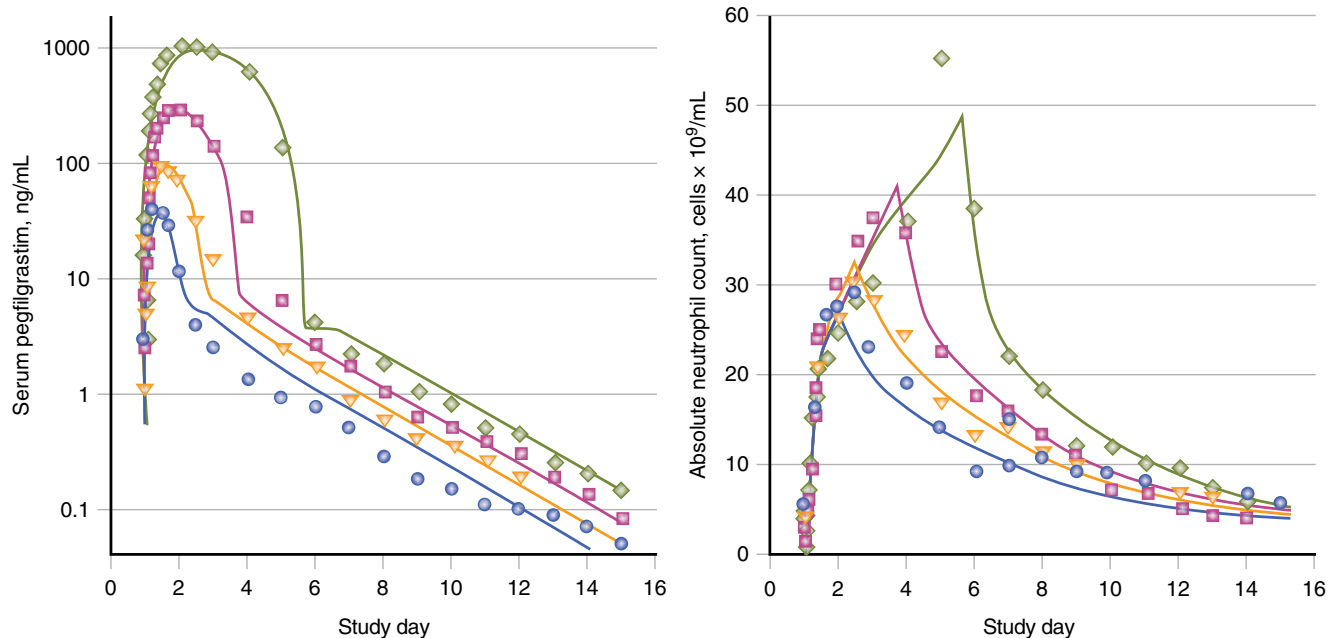
**Figure 5.22** ■ A PK/PD model describing the granulopoietic effects of pegfilgrastim. The PK model is a one-compartment model with two parallel elimination pathways, a first-order elimination process ( $CL_{lin}$ ) and a neutrophil-mediated elimination process ( $CL_N$ ).  $C_1$  and  $V_1$  are the concentrations in the PK compartment and the corresponding volume of distribution. The PD model is a cytokinetic model similar to the cell life span model in Fig. 5.18. Three maturation stages of neutrophils and their respective life spans ( $t_{meta}$ ,  $t_{band}$ ,  $t_{seg}$ ) are included in the model, metamyelocytes, band cells, and segmented neutrophils. Each maturation stage is modeled by three sequential transit compartments. Serum concentrations of pegfilgrastim stimulate mitosis and mobilization of band cells and segmented neutrophils in bone marrow, decrease maturation times for postmitotic cells in marrow, and affect margination of the peripheral blood band cell ( $B_p$ ) and segmented neutrophil ( $S_p$ ) populations, the sum of which is the total absolute neutrophil count (ANC). Changes in neutrophil counts in peripheral blood provide feedback regulation of pegfilgrastim clearance (Modified from Roskos et al. (2006)).

the section on PEGylation, pegfilgrastim follows target-mediated drug disposition with saturable receptor-mediated endocytosis by neutrophils as major elimination pathway ( $CL_N$ ) and a parallel first-order process as minor elimination pathway ( $CL_{lin}$ ; Fig. 5.22). The clearance for the receptor-mediated pathway is determined by the absolute neutrophil count (ANC), the sum of the peripheral blood band cell ( $B_p$ ), and segmented neutrophil ( $S_p$ ) populations.

A maturation-structured cytokinetic model of granulopoiesis was established to describe the relationship between pegfilgrastim serum concentration and neutrophil count (Fig. 5.22). The starting point is the production of metamyelocytes from mitotic precursors. Subsequent maturation stages are captured as band cells and segmented neutrophils in the bone marrow. Each maturation stage is modeled by three sequential transit compartments.

Pegfilgrastim concentrations are assumed to increase ANC by stimulating mitosis and mobilization of band cells and segmented neutrophils from the bone marrow into the systemic circulation. Pegfilgrastim also promotes rapid margination of peripheral blood neutrophils, i.e., adhesion to blood vessels; this effect is modeled as an expansion of neutrophil dilution volume.

Figure 5.23 shows observed and modeled pegfilgrastim concentration time and ANC time profiles after escalating single SC dose administration of pegfilgrastim. The presented PK/PD model for pegfilgrastim allowed determining its  $EC_{50}$  for the effect on ANC. Based on this  $EC_{50}$  value and the obtained pegfilgrastim plasma concentrations, it was concluded that a 100  $\mu\text{g}/\text{kg}$  dose was sufficient to reach the maximum therapeutic effect of pegfilgrastim on ANC (Roskos et al. 2006; Yang 2006).



**Figure 5.23** ■ Pegfilgrastim concentration time course and absolute neutrophil count (ANC) time profiles in healthy subjects after a single SC administration of 30, 60, 100, and 300  $\mu\text{g}/\text{kg}$  pegfilgrastim ( $n=8/\text{dose group}$ ). Measured data are presented by symbols as mean  $\pm$  SEM. Lines represent modeled time courses based on the cytokinetic PK/PD model presented in Fig. 5.22 (From Roskos et al. (2006), with permission from John Wiley & Sons, Inc. Copyright American College of Clinical Pharmacology 2006.).

## CONCLUSION

The pharmacokinetic and pharmacodynamic characteristics of peptides and proteins form the basis for their therapeutic application. Appreciation of the pharmacokinetic and pharmacodynamic differences between therapeutic biologics and traditional small-molecule drugs will empower the drug development scientist as well as the healthcare provider to handle, evaluate, and apply these compounds in an optimal fashion during the drug development process as well as during applied pharmacotherapy. Rationale, scientifically based drug development and pharmacotherapy based on the use of pharmacokinetic and pharmacodynamic concepts will undoubtedly propel the success and future of protein therapeutics and might ultimately contribute to provide the novel medications that may serve as the key for the aspired “personalized medicine” in the healthcare systems of the future (Nagle et al. 2003).

## SELF-ASSESSMENT QUESTIONS

### ■ Questions

1. What are the major elimination pathways for protein drugs after administration?
2. Which pathway of absorption is rather unique for proteins after SC injection?

3. What is the role of plasma binding proteins for natural proteins?
4. How do the sugar groups on glycoproteins influence hepatic elimination of these glycoproteins?
5. In which direction might elimination clearance of a protein drug change when antibodies against the protein are produced after chronic dosing with the protein drug? Why?
6. What is the major driving force for the transport of proteins from the vascular to the extravascular space?
7. Why are protein therapeutics generally not active upon oral administration?
8. Many protein therapeutics exhibit Michaelis-Menten type, saturable elimination kinetics. What are the underlying mechanisms for this pharmacokinetic behavior?
9. Explain counterclockwise hysteresis in plasma concentration-effect plots.
10. Why is mechanism-based PK/PD modeling a preferred modeling approach for protein therapeutics?

### ■ Answers

1. Proteolysis, glomerular filtration followed by intraluminal metabolism or tubular reabsorption with intracellular lysosomal degradation, renal peritubular absorption followed by catabolism,

- receptor-mediated endocytosis followed by metabolism in the liver and possibly other organs and tissues.
2. Biodistribution from the injection site into the lymphatic system.
  3. Plasma proteins may act as circulating reservoirs for the proteins that are their ligands. Consequently, the protein ligands may be protected from elimination and distribution. In some cases, protein binding may protect the organism from undesirable, acute effects; in other cases, receptor binding may be facilitated by the binding protein.
  4. In some cases, the sugar groups are recognized by hepatic receptors (e.g., galactose by the galactose receptor), facilitating receptor-mediated uptake and metabolism. In other cases, sugar chains and terminal sugar groups (e.g., terminal sialic acid residues) may shield the protein from binding to receptors and hepatic uptake.
  5. Clearance may increase or decrease by forming antibody-protein complexes. A decrease of clearance occurs when the antibody-protein complex is eliminated slower than free protein. An increase of clearance occurs when the protein-antibody complex is eliminated more rapidly than the unbound protein, such as when reticuloendothelial uptake is stimulated by the complex.
  6. Protein extravasation, i.e., transport from the blood or vascular space to the interstitial tissue space, is predominantly mediated by fluid convection. Protein molecules follow the fluid flux from the vascular space through pores between adjacent cells into the interstitial space. Drainage of the interstitial space through the lymphatic system allows protein therapeutics to distribute back into the vascular space.
  7. The gastrointestinal mucosa is a major absorption barrier for hydrophilic macromolecule such as proteins. In addition, peptide and protein therapeutics are degraded by the extensive peptidase and protease activity in the gastrointestinal tract. Both processes minimize the oral bioavailability of protein therapeutics.
  8. Receptor-mediated endocytosis is the most frequent cause of nonlinear pharmacokinetics in protein therapeutics. Its occurrence becomes even more prominent if the protein therapeutic undergoes target-mediated drug disposition, i.e., if the receptor-mediated endocytosis is mediated via the pharmacologic target of the protein therapeutic. As the binding to the target is usually of high affinity, and the protein therapeutic is often dosed to saturate the majority of the available target receptors for maximum pharmacologic efficacy, saturation of the associated receptor-mediated endocytosis as elimination pathway is frequently encountered.
  9. Counterclockwise hysteresis is an indication of the indirect nature of the effects seen for many protein drugs. It can be explained by delays between the appearance of drug in plasma and the appearance of the pharmacodynamic response. The underlying cause may either be a distributional delay between the drug concentrations in plasma and at the effect site (modeled with an indirect link PK/PD model) or by time-consuming post-receptor events that cause a delay between the drug-receptor interaction and the observed drug effect, for example, the effect on a physiologic measure or endogenous substance.
  10. Protein therapeutics are often classified as “targeted therapies” where the drug compound acts on one specific, well-defined response pathway. This well-documented knowledge on the mechanism of action can relatively easily be translated into a mechanism-based PK/PD modeling approach that incorporates the major physiological processes relevant for the pharmacologic effect. The advantage of mechanism-based as compared to empirical PK/PD modeling is that mechanism-based models are usually more robust and allow more reliable simulations beyond the actually measured data.

## REFERENCES

- Agoram B, Heatherington AC, Gastonguay MR (2006) Development and evaluation of a population pharmacokinetic-pharmacodynamic model of darbepoetin alfa in patients with nonmyeloid malignancies undergoing multicycle chemotherapy. *AAPS J* 8(3):E552–E563
- Allon M, Kleinman K, Walczyk M et al (2002) Pharmacokinetics and pharmacodynamics of darbepoetin alfa and epoetin in patients undergoing dialysis. *Clin Pharmacol Ther* 72(5):546–555
- Anderson PM, Sorenson MA (1994) Effects of route and formulation on clinical pharmacokinetics of interleukin-2. *Clin Pharmacokinet* 27(1):19–31
- Bauer RJ, Gibbons JA, Bell DP, Luo ZP, Young JD (1994) Nonlinear pharmacokinetics of recombinant human macrophage colony-stimulating factor (M-CSF) in rats. *J Pharmacol Exp Ther* 268(1):152–158
- Baxter LT, Zhu H, Mackensen DG, Jain RK (1994) Physiologically based pharmacokinetic model for specific and nonspecific monoclonal antibodies and fragments in normal tissues and human tumor xenografts in nude mice. *Cancer Res* 54(6):1517–1528
- Benincosa LJ, Chow FS, Tobia LP et al (2000) Pharmacokinetics and pharmacodynamics of a humanized monoclonal antibody to factor IX in cynomolgus monkeys. *J Pharmacol Exp Ther* 292(2):810–816
- Bennett HP, McMartin C (1978) Peptide hormones and their analogues: distribution, clearance from the circulation, and inactivation in vivo. *Pharmacol Rev* 30(3):247–292

- Boxenbaum H (1982) Interspecies scaling, allometry, physiological time, and the ground plan of pharmacokinetics. *J Pharmacokinet Biopharm* 10(2):201–227
- Bressolle F, Audran M, Gareau R, Pham TN, Gomeni R (1997) Comparison of a direct and indirect population pharmacodynamic model: application to recombinant human erythropoietin in athletes. *J Pharmacokinet Biopharm* 25(3):263–275
- Bu G, Williams S, Strickland DK, Schwartz AL (1992) Low density lipoprotein receptor-related protein/alpha 2-macroglobulin receptor is a hepatic receptor for tissue-type plasminogen activator. *Proc Natl Acad Sci U S A* 89(16):7427–7431
- Caliceti P, Veronese FM (2003) Pharmacokinetic and biodistribution properties of poly(ethylene glycol)-protein conjugates. *Adv Drug Deliv Rev* 55(10):1261–1277
- Carone FA, Peterson DR (1980) Hydrolysis and transport of small peptides by the proximal tubule. *Am J Physiol* 238(3):F151–F158
- Carone FA, Peterson DR, Flouret G (1982) Renal tubular processing of small peptide hormones. *J Lab Clin Med* 100(1):1–14
- Chanson P, Timsit J, Harris AG (1993) Clinical pharmacokinetics of octreotide. Therapeutic applications in patients with pituitary tumours. *Clin Pharmacokinet* 25(5):375–391
- Chiang J, Gloff CA, Yoshizawa CN, Williams GJ (1993) Pharmacokinetics of recombinant human interferon-beta ser in healthy volunteers and its effect on serum neopterin. *Pharm Res* 10(4):567–572
- Chirmule N, Jawa V, Meibohm B (2012) Immunogenicity to therapeutic proteins: impact on PK/PD and efficacy. *AAPS J* 14(2):296–302
- Chow FS, Benincosa LJ, Sheth SB et al (2002) Pharmacokinetic and pharmacodynamic modeling of humanized anti-factor IX antibody (SB 249417) in humans. *Clin Pharmacol Ther* 71(4):235–245
- Colburn W (1991) Peptide, peptoid, and protein pharmacokinetics/pharmacodynamics. In: Garzone P, Colburn W, Mokotoff M (eds) *Peptides, peptoids, and proteins*, 3rd edn. Harvey Whitney Books, Cincinnati, pp 94–115
- Cumming DA (1991) Glycosylation of recombinant protein therapeutics: control and functional implications. *Glycobiology* 1(2):115–130
- Daniel H, Herget M (1997) Cellular and molecular mechanisms of renal peptide transport. *Am J Physiol* 273(1 Pt 2):F1–F8
- Dayneka NL, Garg V, Jusko WJ (1993) Comparison of four basic models of indirect pharmacodynamic responses. *J Pharmacokinet Biopharm* 21(4):457–478
- Dedrick RL (1973) Animal scale-up. *J Pharmacokinet Biopharm* 1(5):435–461
- Deen WM, Lazzara MJ, Myers BD (2001) Structural determinants of glomerular permeability. *Am J Physiol Renal Physiol* 281(4):F579–F596
- Deng R, Iyer S, Theil FP et al (2011) Projecting human pharmacokinetics of therapeutic antibodies from nonclinical data: what have we learned? *MAbs* 3(1):61–66
- Derendorf H, Meibohm B (1999) Modeling of pharmacokinetic/pharmacodynamic (PK/PD) relationships: concepts and perspectives. *Pharm Res* 16(2):176–185
- Dirks NL, Meibohm B (2010) Population pharmacokinetics of therapeutic monoclonal antibodies. *Clin Pharmacokinet* 49(10):633–659
- Edwards A, Daniels BS, Deen WM (1999) Ultrastructural model for size selectivity in glomerular filtration. *Am J Physiol* 276(6 Pt 2):F892–F902
- Eppler SM, Combs DL, Henry TD et al (2002) A target-mediated model to describe the pharmacokinetics and hemodynamic effects of recombinant human vascular endothelial growth factor in humans. *Clin Pharmacol Ther* 72(1):20–32
- Fasano A (1998) Novel approaches for oral delivery of macromolecules. *J Pharm Sci* 87(11):1351–1356
- Flessner MF, Lofthouse J, el Zakaria R (1997) In vivo diffusion of immunoglobulin G in muscle: effects of binding, solute exclusion, and lymphatic removal. *Am J Physiol* 273(6 Pt 2):H2783–H2793
- Graham ML (2003) Pegaspargase: a review of clinical studies. *Adv Drug Deliv Rev* 55(10):1293–1302
- Handelsman DJ, Swerdloff RS (1986) Pharmacokinetics of gonadotropin-releasing hormone and its analogs. *Endocr Rev* 7(1):95–105
- Herbst RS, Langer CJ (2002) Epidermal growth factor receptors as a target for cancer treatment: the emerging role of IMC-C225 in the treatment of lung and head and neck cancers. *Semin Oncol* 29(1 Suppl 4):27–36
- Holford NH, Sheiner LB (1982) Kinetics of pharmacologic response. *Pharmacol Ther* 16(2):143–166
- Inui K, Terada T, Masuda S, Saito H (2000) Physiological and pharmacological implications of peptide transporters, PEPT1 and PEPT2. *Nephrol Dial Transplant* 15(Suppl 6):11–13
- Ismair MG, Stieger B, Cattori V et al (2001) Hepatic uptake of cholecystokinin octapeptide by organic anion-transporting polypeptides OATP4 and OATP8 of rat and human liver. *Gastroenterology* 121(5):1185–1190
- Jin F, Krzyzanski W (2004) Pharmacokinetic model of target-mediated disposition of thrombopoietin. *AAPS PharmSci* 6(1):E9
- Johnson V, Maack T (1977) Renal extraction, filtration, absorption, and catabolism of growth hormone. *Am J Physiol* 233(3):F185–F196
- Kageyama S, Yamamoto H, Nakazawa H et al (2002) Pharmacokinetics and pharmacodynamics of AJW200, a humanized monoclonal antibody to von Willebrand factor, in monkeys. *Arterioscler Thromb Vasc Biol* 22(1):187–192
- Kaufman JS, Reda DJ, Fye CL et al (1998) Subcutaneous compared with intravenous epoetin in patients receiving hemodialysis. Department of Veterans Affairs Cooperative Study Group on Erythropoietin in Hemodialysis Patients. *N Engl J Med* 339(9):578–583
- Khor SP, McCarthy K, DuPont M, Murray K, Timony G (2000) Pharmacokinetics, pharmacodynamics, allometry, and dose selection of rPSGL-Ig for phase I trial. *J Pharmacol Exp Ther* 293(2):618–624
- Kim J, Hayton WL, Robinson JM, Anderson CL (2007) Kinetics of FcRn-mediated recycling of IgG and albumin in human: pathophysiology and therapeutic implications using a simplified mechanism-based model. *Clin Immunol* 122(2):146–155

- Kobayashi H, Shirakawa K, Kawamoto S et al (2002) Rapid accumulation and internalization of radiolabeled heptin in an inflammatory breast cancer xenograft with vasculogenic mimicry predicted by the contrast-enhanced dynamic MRI with the macromolecular contrast agent G6-(1B4M-Gd)(256). *Cancer Res* 62(3): 860–866
- Kompella U, Lee V (1991) Pharmacokinetics of peptide and protein drugs. In: Lee V (ed) *Peptide and protein drug delivery*. Marcel Dekker, New York, pp 391–484
- Kontermann R (2012) *Therapeutic proteins: strategies to modulate their plasma half-lives*. Wiley, Weinheim
- Krogsgaard Thomsen M, Friis C, Sehested Hansen B et al (1994) Studies on the renal kinetics of growth hormone (GH) and on the GH receptor and related effects in animals. *J Pediatr Endocrinol* 7(2):93–105
- Kuwabara T, Uchimura T, Kobayashi H, Kobayashi S, Sugiyama Y (1995) Receptor-mediated clearance of G-CSF derivative nartograstim in bone marrow of rats. *Am J Physiol* 269(1 Pt 1):E1–E9
- Lee HJ (2002) Protein drug oral delivery: the recent progress. *Arch Pharm Res* 25(5):572–584
- Lee H, Kimko HC, Rogge M et al (2003) Population pharmacokinetic and pharmacodynamic modeling of etanercept using logistic regression analysis. *Clin Pharmacol Ther* 73(4):348–365
- Lesko LJ (2007) Paving the critical path: how can clinical pharmacology help achieve the vision? *Clin Pharmacol Ther* 81(2):170–177
- Lesko LJ, Rowland M, Peck CC, Blaschke TF (2000) Optimizing the science of drug development: opportunities for better candidate selection and accelerated evaluation in humans. *J Clin Pharmacol* 40(8): 803–814
- Levy G (1986) Kinetics of drug action: an overview. *J Allergy Clin Immunol* 78(4 Pt 2):754–761
- Levy G (1994) Mechanism-based pharmacodynamic modeling. *Clin Pharmacol Ther* 56(4):356–358
- Limothai W, Meibohm B (2011) Effect of dose on the apparent bioavailability of therapeutic proteins that undergo target-mediated drug disposition. *AAPS J* 13(S2)
- Maack T, Park C, Camargo M (1985) Renal filtration, transport and metabolism of proteins. In: Seldin D, Gebisch G (eds) *The kidney*. Raven Press, New York, pp 1773–1803
- Macdougall IC, Gray SJ, Elston O et al (1999) Pharmacokinetics of novel erythropoiesis stimulating protein compared with epoetin alfa in dialysis patients. *J Am Soc Nephrol* 10(11):2392–2395
- Mach H, Gregory SM, Mackiewicz A et al (2011) Electrostatic interactions of monoclonal antibodies with subcutaneous tissue. *Ther Deliv* 2(6):727–736
- Mager DE (2006) Target-mediated drug disposition and dynamics. *Biochem Pharmacol* 72(1):1–10
- Mager DE, Wyska E, Jusko WJ (2003) Diversity of mechanism-based pharmacodynamic models. *Drug Metab Dispos* 31(5):510–518
- Mahato RI, Narang AS, Thoma L, Miller DD (2003) Emerging trends in oral delivery of peptide and protein drugs. *Crit Rev Ther Drug Carrier Syst* 20(2–3):153–214
- Mahmood I (2002) Interspecies scaling: predicting oral clearance in humans. *Am J Ther* 9(1):35–42
- Mahmood I, Balian JD (1999) The pharmacokinetic principles behind scaling from preclinical results to phase I protocols. *Clin Pharmacokinet* 36(1):1–11
- Marks DL, Gores GJ, LaRusso NF (1995) Hepatic processing of peptides. In: Taylor MD, Amidon GL (eds) *Peptide-based drug design: controlling transport and metabolism*. American Chemical Society, Washington, DC, pp 221–248
- McMahon HT, Boucrot E (2011) Molecular mechanism and physiological functions of clathrin-mediated endocytosis. *Nat Rev Mol Cell Biol* 12(8):517–533
- McMartin C (1992) Pharmacokinetics of peptides and proteins: opportunities and challenges. *Adv Drug Res* 22:39–106
- Meibohm B (2004) Pharmacokinetics of protein- and nucleotide-based drugs. In: Mahato RI (ed) *Biomaterials for delivery and targeting of proteins and nucleic acids*. CRC Press, Boca Raton, pp 275–294
- Meibohm B, Derendorf H (1994) Pharmacokinetics and pharmacodynamics of biotech drugs. In: Kayser O, Muller R (eds) *Pharmaceutical biotechnology: drug discovery and clinical applications*. Wiley, Weinheim, pp 141–166
- Meibohm B, Derendorf H (1997) Basic concepts of pharmacokinetic/pharmacodynamic (PK/PD) modelling. *Int J Clin Pharmacol Ther* 35(10):401–413
- Meibohm B, Derendorf H (2002) Pharmacokinetic/pharmacodynamic studies in drug product development. *J Pharm Sci* 91(1):18–31
- Meibohm B, Derendorf H (2003) Pharmacokinetics and pharmacodynamics of biotech drugs. In: Muller R, Kayser O (eds) *Applications of pharmaceutical biotechnology*. Wiley-VCH, Weinheim
- Meibohm B, Zhou H (2012) Characterizing the impact of renal impairment on the clinical pharmacology of biologics. *J Clin Pharmacol* 52(1 Suppl):54S–62S
- Meijer D, Ziegler K (1993) *Biological barriers to protein delivery*. Plenum Press, New York
- Mohler M, Cook J, Lewis D et al (1993) Altered pharmacokinetics of recombinant human deoxyribonuclease in rats due to the presence of a binding protein. *Drug Metab Dispos* 21(1):71–75
- Molineux G (2003) Pegylation: engineering improved biopharmaceuticals for oncology. *Pharmacotherapy* 23(8 Pt 2):3S–8S
- Montero-Julian FA, Klein B, Gautherot E, Brailly H (1995) Pharmacokinetic study of anti-interleukin-6 (IL-6) therapy with monoclonal antibodies: enhancement of IL-6 clearance by cocktails of anti-IL-6 antibodies. *Blood* 85(4):917–924
- Mordenti J, Chen SA, Moore JA, Ferraiolo BL, Green JD (1991) Interspecies scaling of clearance and volume of distribution data for five therapeutic proteins. *Pharm Res* 8(11):1351–1359
- Mould DR, Davis CB, Minthorn EA et al (1999) A population pharmacokinetic-pharmacodynamic analysis of single doses of clenoliximab in patients with rheumatoid arthritis. *Clin Pharmacol Ther* 66(3):246–257
- Nagaraja NV, Pechstein B, Erb K et al (2000) Pharmacokinetic and pharmacodynamic modeling of cetrorelix, an

- LH-RH antagonist, after subcutaneous administration in healthy premenopausal women. *Clin Pharmacol Ther* 68(6):617–625
- Nagaraja NV, Pechstein B, Erb K et al (2003) Pharmacokinetic/pharmacodynamic modeling of luteinizing hormone (LH) suppression and LH surge delay by cetrorelix after single and multiple doses in healthy premenopausal women. *J Clin Pharmacol* 43(3):243–251
- Nagle T, Berg C, Nassr R, Pang K (2003) The further evolution of biotech. *Nat Rev Drug Discov* 2(1):75–79
- Nielsen S, Nielsen JT, Christensen EI (1987) Luminal and basolateral uptake of insulin in isolated, perfused, proximal tubules. *Am J Physiol* 253(5 Pt 2):F857–F867
- Pauletti GM, Gangwar S, Siahaan TJ, Jeffrey A, Borchardt RT (1997) Improvement of oral peptide bioavailability: peptidomimetics and prodrug strategies. *Adv Drug Deliv Rev* 27(2–3):235–256
- Pechstein B, Nagaraja NV, Hermann R et al (2000) Pharmacokinetic-pharmacodynamic modeling of testosterone and luteinizing hormone suppression by cetrorelix in healthy volunteers. *J Clin Pharmacol* 40(3):266–274
- Peck CC, Barr WH, Benet LZ et al (1994) Opportunities for integration of pharmacokinetics, pharmacodynamics, and toxicokinetics in rational drug development. *J Clin Pharmacol* 34(2):111–119
- Perez-Ruixo JJ, Kimko HC, Chow AT et al (2005) Population cell life span models for effects of drugs following indirect mechanisms of action. *J Pharmacokinet Pharmacodyn* 32(5–6):767–793
- Periti P, Mazzei T, Mini E (2002) Clinical pharmacokinetics of depot leuporelin. *Clin Pharmacokinet* 41(7):485–504
- Perrier D, Mayersohn M (1982) Noncompartmental determination of the steady-state volume of distribution for any mode of administration. *J Pharm Sci* 71(3):372–373
- Piscitelli SC, Reiss WG, Figg WD, Petros WP (1997) Pharmacokinetic studies with recombinant cytokines. Scientific issues and practical considerations. *Clin Pharmacokinet* 32(5):368–381
- Porter CJ, Charman SA (2000) Lymphatic transport of proteins after subcutaneous administration. *J Pharm Sci* 89(3):297–310
- Rabkin R, Ryan MP, Duckworth WC (1984) The renal metabolism of insulin. *Diabetologia* 27(3):351–357
- Racine-Poon A, Botta L, Chang TW et al (1997) Efficacy, pharmacodynamics, and pharmacokinetics of CGP 51901, an anti-immunoglobulin E chimeric monoclonal antibody, in patients with seasonal allergic rhinitis. *Clin Pharmacol Ther* 62(6):675–690
- Radwanski E, Chakraborty A, Van Wart S et al (1998) Pharmacokinetics and leukocyte responses of recombinant human interleukin-10. *Pharm Res* 15(12):1895–1901
- Ramakrishnan R, Cheung WK, Wacholtz MC, Minton N, Jusko WJ (2004) Pharmacokinetic and pharmacodynamic modeling of recombinant human erythropoietin after single and multiple doses in healthy volunteers. *J Clin Pharmacol* 44(9):991–1002
- Reddy ST, Berk DA, Jain RK, Swartz MA (2006) A sensitive in vivo model for quantifying interstitial convective transport of injected macromolecules and nanoparticles. *J Appl Physiol* 101(4):1162–1169
- Richter WF, Gallati H, Schiller CD (1999) Animal pharmacokinetics of the tumor necrosis factor receptor-immunoglobulin fusion protein lenercept and their extrapolation to humans. *Drug Metab Dispos* 27(1):21–25
- Richter WF, Bhansali SG, Morris ME (2012) Mechanistic determinants of biotherapeutics absorption following SC administration. *AAPS J* 14(3):559–570
- Roopenian DC, Akilesh S (2007) FcRn: the neonatal Fc receptor comes of age. *Nat Rev Immunol* 7(9):715–725
- Roskos LK, Lum P, Lockbaum P, Schwab G, Yang BB (2006) Pharmacokinetic/pharmacodynamic modeling of pegfilgrastim in healthy subjects. *J Clin Pharmacol* 46(7):747–757
- Schomburg A, Kirchner H, Atzpodien J (1993) Renal, metabolic, and hemodynamic side-effects of interleukin-2 and/or interferon alpha: evidence of a risk/benefit advantage of subcutaneous therapy. *J Cancer Res Clin Oncol* 119(12):745–755
- Sharma A, Jusko W (1998) Characteristics of indirect pharmacodynamic models and applications to clinical drug responses. *Br J Clin Pharmacol* 45:229–239
- Sheiner LB, Steimer JL (2000) Pharmacokinetic/pharmacodynamic modeling in drug development. *Annu Rev Pharmacol Toxicol* 40:67–95
- Sheiner LB, Stanski DR, Vozeh S, Miller RD, Ham J (1979) Simultaneous modeling of pharmacokinetics and pharmacodynamics: application to d-tubocurarine. *Clin Pharmacol Ther* 25(3):358–371
- Shen WC (2003) Oral peptide and protein delivery: unfulfilled promises? *Drug Discov Today* 8(14):607–608
- Smedsrod B, Einarsson M (1990) Clearance of tissue plasminogen activator by mannose and galactose receptors in the liver. *Thromb Haemost* 63(1):60–66
- Straughn AB (1982) Model-independent steady-state volume of distribution. *J Pharm Sci* 71(5):597–598
- Straughn AB (2006) Limitations of noncompartmental pharmacokinetic analysis of biotech drugs. In: Meibohm B (ed) *Pharmacokinetics and pharmacodynamics of biotech drugs*. Wiley, Weinheim, pp 181–188
- Strickland DK, Kounnas MZ, Argraves WS (1995) LDL receptor-related protein: a multiligand receptor for lipoprotein and proteinase catabolism. *FASEB J* 9(10):890–898
- Sun YN, Jusko WJ (1999) Role of baseline parameters in determining indirect pharmacodynamic responses. *J Pharm Sci* 88(10):987–990
- Sun YN, Lee HJ, Almon RR, Jusko WJ (1999) A pharmacokinetic/pharmacodynamic model for recombinant human growth hormone effects on induction of insulin-like growth factor I in monkeys. *J Pharmacol Exp Ther* 289(3):1523–1532
- Supersaxo A, Hein W, Gallati H, Steffen H (1988) Recombinant human interferon alpha-2a: delivery to lymphoid tissue by selected modes of application. *Pharm Res* 5(8):472–476
- Supersaxo A, Hein WR, Steffen H (1990) Effect of molecular weight on the lymphatic absorption of water-soluble compounds following subcutaneous administration. *Pharm Res* 7(2):167–169

- Suryawanshi S, Zhang L, Pfister M, Meibohm B (2010) The current role of model-based drug development. *Expert Opin Drug Discov* 5(4):311–321
- Tabrizi M, Roskos LK (2006) Exposure-response relationships for therapeutic biologics. In: Meibohm B (ed) *Pharmacokinetics and pharmacodynamics of biotech drugs*. Wiley, Weinheim, pp 295–330
- Takagi A, Masuda H, Takakura Y, Hashida M (1995) Disposition characteristics of recombinant human interleukin-11 after a bolus intravenous administration in mice. *J Pharmacol Exp Ther* 275(2):537–543
- Taki Y, Sakane T, Nadai T et al (1998) First-pass metabolism of peptide drugs in rat perfused liver. *J Pharm Pharmacol* 50(9):1013–1018
- Tang L, Meibohm B (2006) Pharmacokinetics of peptides and proteins. In: Meibohm B (ed) *Pharmacokinetics and pharmacodynamics of biotech drugs*. Wiley, Weinheim, pp 17–44
- Tang L, Persky AM, Hochhaus G, Meibohm B (2004) Pharmacokinetic aspects of biotechnology products. *J Pharm Sci* 93(9):2184–2204
- Tanswell P, Modi N, Combs D, Danays T (2002) Pharmacokinetics and pharmacodynamics of tenecteplase in fibrinolytic therapy of acute myocardial infarction. *Clin Pharmacokinet* 41(15):1229–1245
- Tokuda Y, Watanabe T, Omuro Y et al (1999) Dose escalation and pharmacokinetic study of a humanized anti-HER2 monoclonal antibody in patients with HER2/neu-overexpressing metastatic breast cancer. *Br J Cancer* 81(8):1419–1425
- Toon S (1996) The relevance of pharmacokinetics in the development of biotechnology products. *Eur J Drug Metab Pharmacokinet* 21(2):93–103
- van Hasselt JG, Boekhout AH, Beijnen JH, Schellens JH, Huitema AD (2011) Population pharmacokinetic-pharmacodynamic analysis of trastuzumab-associated cardiotoxicity. *Clin Pharmacol Ther* 90(1):126–132
- Veng-Pedersen P, Gillespie W (1984) Mean residence time in peripheral tissue: a linear disposition parameter useful for evaluating a drug's tissue distribution. *J Pharmacokinet Biopharm* 12(5):535–543
- Veronese FM, Caliceti P (2006) Custom-tailored pharmacokinetics and pharmacodynamics via chemical modifications of biotech drugs. In: Meibohm B (ed) *Pharmacokinetics and pharmacodynamics of biotech drugs*. Wiley, Weinheim, pp 271–294
- Walsh S, Shah A, Mond J (2003) Improved pharmacokinetics and reduced antibody reactivity of lysostaphin conjugated to polyethylene glycol. *Antimicrob Agents Chemother* 47(2):554–558
- Wang W, Wang EQ, Balthasar JP (2008) Monoclonal antibody pharmacokinetics and pharmacodynamics. *Clin Pharmacol Ther* 84(5):548–558
- Wills RJ, Ferraiolo BL (1992) The role of pharmacokinetics in the development of biotechnologically derived agents. *Clin Pharmacokinet* 23(6):406–414
- Yang BB (2006) Integration of pharmacokinetics and pharmacodynamics into the drug development of pegfilgrastim, a pegylated protein. In: Meibohm B (ed) *Pharmacokinetics and pharmacodynamics of biotech drugs*. Wiley, Weinheim, pp 373–394
- Zamboni WC (2003) Pharmacokinetics of pegfilgrastim. *Pharmacotherapy* 23(8 Pt 2):9S–14S
- Zhang Y, Meibohm B (2012) Pharmacokinetics and pharmacodynamics and therapeutic peptides and proteins. In: Kayzer O, Warzecha H (eds) *Pharmaceutical biotechnology: drug discovery and clinical applications*. Wiley-VCH, Weinheim, pp 337–368
- Zhang L, Pfister M, Meibohm B (2008) Concepts and challenges in quantitative pharmacology and model-based drug development. *AAPS J* 10(4):552–559
- Zia-Amirhosseini P, Minthorn E, Benincosa LJ et al (1999) Pharmacokinetics and pharmacodynamics of SB-240563, a humanized monoclonal antibody directed to human interleukin-5, in monkeys. *J Pharmacol Exp Ther* 291(3):1060–1067
- Ziegler K, Polzin G, Frimmer M (1988) Hepatocellular uptake of cyclosporin A by simple diffusion. *Biochim Biophys Acta* 938(1):44–50
- Zito SW (1997) *Pharmaceutical biotechnology: a programmed text*. Technomic Pub. Co, Lancaster

## FURTHER READING

### General Pharmacokinetics and Pharmacodynamics

- Atkinson A, Abernethy D, Daniels C, Dedrick R, Markey S (2006) *Principles of clinical pharmacology*. Academic, San Diego
- Bonate PL (2011) *Pharmacokinetic-pharmacodynamic modeling and simulation*. Springer, New York
- Derendorf H, Meibohm B (1999) Modeling of pharmacokinetic/pharmacodynamic (PK/PD) relationships: concepts and perspectives. *Pharm Res* 16(2):176–185
- Gabrielsson J, Hjorth S (2012) *Quantitative pharmacology*. Swedish Academy of Pharmaceutical Sciences, Stockholm
- Gibaldi M, Perrier D (1982) *Pharmacokinetics*. Marcel Dekker Inc., New York
- Holford NH, Sheiner LB (1982) Kinetics of pharmacologic response. *Pharmacol Ther* 16(2):143–166
- Rowland M, Tozer TN (2011) *Clinical pharmacokinetics and pharmacodynamics: concepts and applications*. Lippincott Williams & Wilkins, Baltimore

### Pharmacokinetics and Pharmacodynamics of Peptides and Proteins

- Baumann A (2006) Early development of therapeutic biologics – pharmacokinetics. *Curr Drug Metab* 7:15–21
- Ferraiolo BL, Mohler MA, Gloff CA (1992) *Protein pharmacokinetics and metabolism*. Plenum Press, New York
- Kontermann R (2012) *Therapeutic proteins: strategies to modulate their plasma half-lives*. Wiley, Weinheim
- Meibohm B (2006) *Pharmacokinetics and pharmacodynamics of biotech drugs*. Wiley, Weinheim
- Tang L, Persky AM, Hochhaus G, Meibohm B (2004) Pharmacokinetic aspects of biotechnology products. *J Pharm Sci* 93(9):2184–2204