

# Diagnostic Cerebral Angiography and Groin Access and Closure

Kevin Murphy and Gerald Wyse

---

## Abstract

A full clinical history, physical examination, and review of the study indication should be performed prior to every cerebral angiogram. Perform noninvasive imaging initially with magnetic resonance (MR), computed tomography (CT), and/or CT/MR angiography. Closely review all imaging and laboratory data prior to invasive angiography.

---

## Keywords

Diagnostic cerebral angiography • Groin access • Closure • MR • CT • History and physical

---

## Diagnostic Evaluation

A full clinical history, physical examination, and review of the study indication should be performed prior to every cerebral angiogram. Perform noninvasive imaging initially with magnetic resonance (MR), computed tomography (CT), and/or CT/MR angiography. Closely review all imaging and laboratory data prior to invasive angiography.

---

K. Murphy, MB, Bch, BAO, MRCS (✉) • G. Wyse, MB, Bch, BAO, MRCPI, FFRRCSI  
Department of Radiology, Cork University Hospital, Cork, Ireland

K. Murphy, F. Robertson (eds.), *Interventional Neuroradiology*,  
Techniques in Interventional Radiology,  
DOI 10.1007/978-1-4471-4582-0\_1, © Springer-Verlag London 2014

---

## Indications for Performing a Diagnostic Cerebral Angiogram

Despite the advances of CT and MR angiography, invasive diagnostic cerebral angiography still has a broad number of indications. Today cerebral angiograms are commonly performed to access dynamic process such as AV shunts or following intracranial interventions such as coil embolization of aneurysms. Cerebral angiography can be performed to further investigate patients with:

- Stenosis or occlusion
- Aneurysm
- Vascular malformations
- Vasculitis
- Vascular tumors
- Previous intracranial intervention

---

## Contraindications

### Absolute

- History of anaphylaxis to iodinated contrast
- Patient informed refusal

### Relative

- Coagulopathy
- Contrast allergy
- Abnormal renal function
- Uncontrolled hypertension
- Decompensated heart failure
- Pregnancy

---

## Patient Preparation

Nil by mouth for 6–8 h preferable

Peripheral IV access

Correct coagulopathy and other contraindications where possible

---

## Relevant Aberrant Anatomy

Familiarity with common vascular anatomy is essential. Understanding of the common aberrant or variant anatomy is critical to avoid misinterpretation.

### Common Arch Variants

- “Normal” (70 %).
- Common left common carotid and innominate origin (termed “bovine” arch) (13 %).
- Left common carotid arises from the innominate (9 %) (also termed “bovine” arch).
- Left vertebral artery directly from arch (5 %).
- Left brachiocephalic trunk (2.7 %).
- Aberrant right subclavian (0.5 %).

### Common Intracranial Variants

- Complete circle of Willis (20–25 %)
- Hypoplasia of one or both posterior communicating arteries (PComs) (34 %)
- Hypoplastic/absent A1 segment of the anterior cerebral artery (ACA)
- Origin of posterior cerebral artery (PCA) from the internal carotid artery (ICA) with and absent or hypoplastic P1 segment (17 %) (fetal PCom or fetal circulation)
- Infundibular dilatation of the PCom origin (10 %)

---

## Preprocedure Medications

Sedation of the patient is not routinely required. An oversedated patient can be difficult to neurologically assess, and an acute complication may be missed. In addition noncompliance from a sedated patient may lead to a poor quality or even nondiagnostic study.

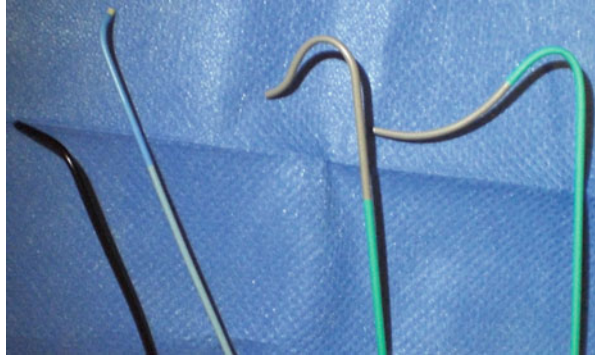
---

## Procedure

### Access

A common femoral artery (CFA) groin approach, the right groin in particular, is favored for access. The femoral artery is easily compressed post procedure and is associated with a low puncture site complication rate even in the setting of antiplatelet agents.

**Fig. 1** JB-1, Berenstein, Sim1, and SIM 2 catheters



Radial access continues to grow in popularity for coronary procedures. Compression with a wrist brace negates the need for prolonged supine bed rest post procedure. Although useful for ipsilateral vertebral artery access, this approach is not ideal to access all four vessels during a cerebral angiogram. Brachial and axillary access may be used but are associated with higher puncture site complication rates.

The authors recommend the use of a “micro” access set (21-gauge access needle with a short 0.018” wire and a 4-French sheath). Alternatively, a standard 18-gauge needle with 0.035” wire can be used.

- Routine fluoroscopy to accurately locate the center of the femoral head is recommended.
- Infiltration of local anesthetic (1–2 % lignocaine).
- A subsequent single-wall puncture with a 21-gauge needle is performed with a small skin insertion to aid sheath insertion.
- Ultrasound guidance should be readily available and is a valuable adjunct.
- Long sheaths 25 cm or more are useful in the setting of diseased or tortuous iliac vessels.

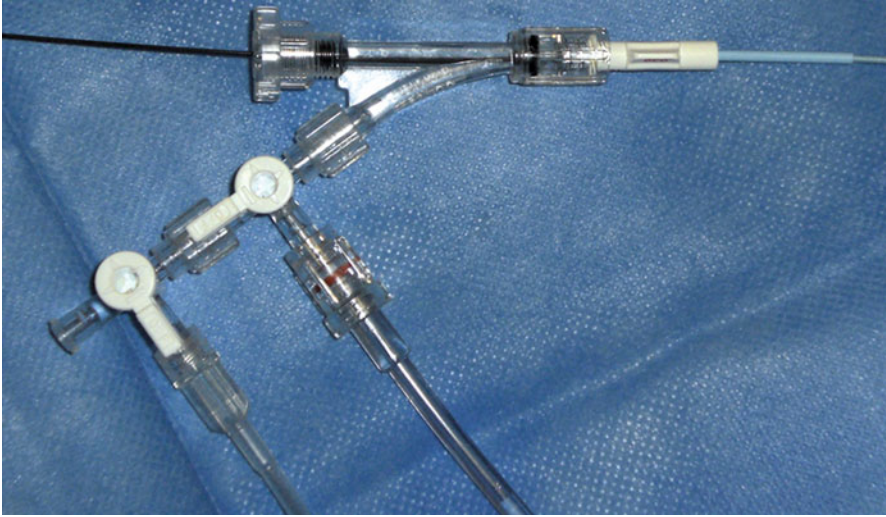
Immediately after sheath insertion a femoral angiogram should be performed. This leads to early discovery of arterial injury or dissection. It also ensures that the puncture site is appropriate for insertion of a closure device.

After gaining access to the (right) common femoral artery, the following are routinely used:

- Short 4-French sheath
- 4-French 100-cm Berenstein catheter (Fig. 1)
- 0.035” hydrophilic angled glide wire
- Closed system pressurized saline flush (Fig. 2)

A 5-French system can also be used.

A wide variety of different selective end-hole catheters may be utilized. An unfolded aorta or tortuous anatomy may require two different catheters. Operator preference varies from basic hockey-stick-style catheters to more complex tip shapes. Commonly used



**Fig. 2** Closed system with adaptor, contrast pump connection, and saline flush

catheters for cerebral angiography include Bernstein, Headhunter, Sim 1, Sim 2, JB-1, and Vert catheters or equivalent (Fig. 1).

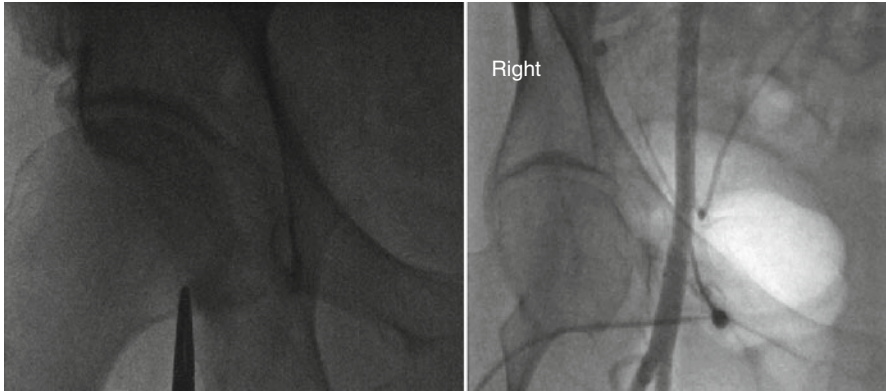
Regular flushing of the catheter is essential during cerebral angiography to prevent clot formation and a possible embolic complication. Always use a double-flush and meniscus-to-meniscus technique. Closed continuous flush systems enable a single operator to perform a cerebral angiogram without an assistant. Continuous saline flushing prevents clot formation in the catheter. Meticulous examination of these closed flush systems is required to ensure the system is free of air. Operator inexperience or unfamiliarity with such systems can lead to devastating air embolism. Opinions and practices regarding these closed flush systems vary widely.

## Angiography

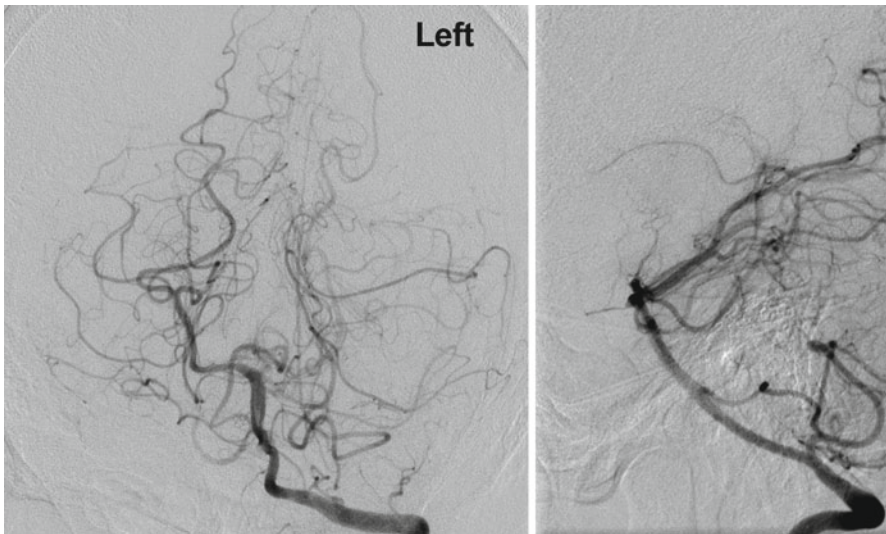
A complete cerebral angiogram includes angiograms in at least two views of both carotid bifurcations, the intracranial circulation from both common carotid arteries, the vertebral arteries, and the posterior circulation. 3D DSA assessment of the artery of interest is usually performed. Additional angiograms relating to the clinical indication can be performed as well as relevant magnified branch assessments.

## Intraprocedural Medications

Routine heparin use for cerebral angiography is optional. Heparin should be used in patients at high risk of thrombosis.



**Fig. 3** Accurate pre-puncture localization as well as low-dose angiogram (fluoroscopy loop) of the right CFA is advised to ensure safe puncture and sheath placement



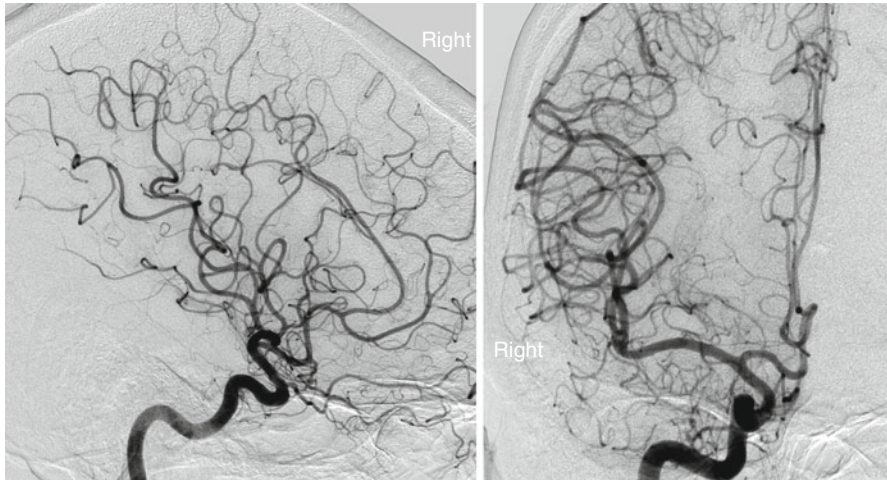
**Fig. 4** Normal two plane vertebral angiogram

### Performing the Procedure

Accurate pre-puncture localization as well as low-dose angiogram (fluoroscopy loop) of the right CFA is advised to ensure safe puncture and sheath placement (Fig. 3).

Angle the tube with 20–30° of LAO may assist in cannulation of the carotids and the left vertebral arteries from the arch. Fluoroscopy techniques such as roadmap or fluoro fade can be of assistance.

An occipitofrontal-type frontal plane view in conjunction with a true lateral view is advisable for ICA analysis (Fig. 4). Vertebral analysis is best assessed with a true lateral in association with a fronto-occipital/Towne's frontal plane projection (Fig. 5). Always review the clinical indication and the angiograms obtained before removing the sheath



**Fig. 5** Normal two plane ICA angiogram

### Groin Closure

The two broad alternatives to close a CFA arteriotomy are the employment of manual compression or the use of a vascular closure device (VCD). When manual compression is utilized, nonocclusive pressure should be applied to the arteriotomy puncture site for at least 10 min post procedure. When a large caliber sheath has been used or when the patient is anticoagulated, this length of time is insufficient and a longer duration of pressure and observation is needed. It is advised that the patient lies supine for 4 h if closure is with manual compression. The patient should be examined for the presence of distal pulses, hematoma, and pseudoaneurysm formation at the site of puncture. A wide choice of VCDs is available and broadly fit into the following categories of device:

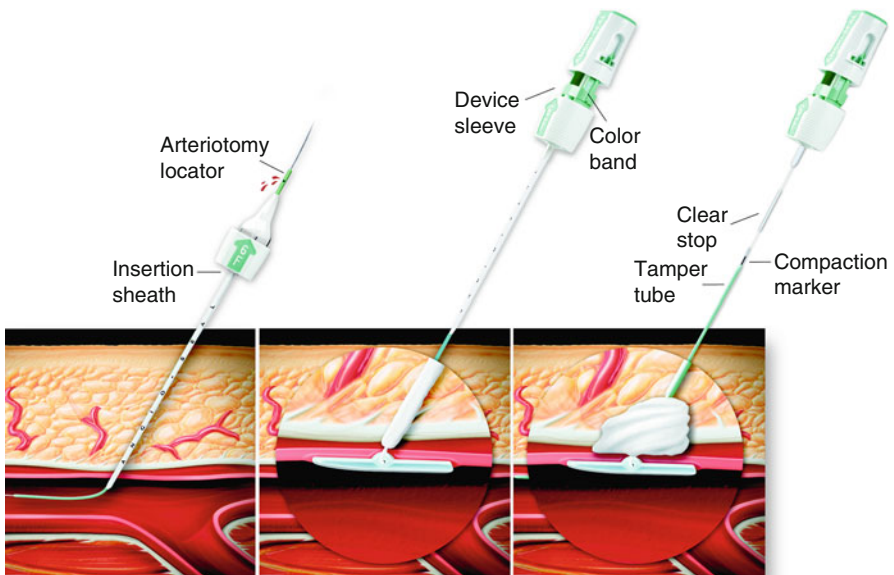
- Passive external pad or patch which enhances manual compression
- Suture devices which close the arteriotomy
- External extravascular collagen plug or nitinol clip

Vascular closure devices are utilized in 30–50 % of all angiograms worldwide. The complications associated with the use of VCDs are comparable to manual compression (3–5). Closure devices have the advantage of earlier hemostasis and earlier mobilization. Both of these are advantageous when the patient is anticoagulated or coming out of a general anesthetic. The risk of groin infection and possibly the need for puncture site surgery are marginally greater with VCDs. However, overall, the differences between VCDs and manual compression are not statistically significant. The cost of these devices should also be considered. The most popular closure devices on the market are shown in Table 1. A statistically significant difference in efficacy and complication rate does not exist between these commonly used closure devices.

Angio-Seal™, ProGlide/Perclose™, and StarClose™ dominate the market at present. Device deployment for these three closure methods is shown in Figs. 6, 7 and 8.

**Table 1** Commonly used closure devices

Device	Manufacturer	Device type
Angio-Seal®	St. Jude Medical	Bovine collagen
VasoSeal®	Datascope	Bovine collagen
Duett Pro®	Vascular Solutions	Collagen/thrombin
Exoseal	Cordis	PGA plug
Perclose®	Abbott Vascular	Suture
ProGlide®	Abbott Vascular	Suture
X Site®	Datascope	Suture
FemoSeal®	Radi Medical	Collagen
SuperStitch®	Sutura Inc.	Suture
EVS®	Medtronic	Titanium staple
StarClose®	Abbott Vascular	Nitinol clip
SoundSeal®	Therus/Boston Scientific	Ultrasound (passive)
Boomerang®	Cardiva Medical	Tamponade (passive)
Mynx®	AccessClosure	Tamponade (passive)

**Fig. 6** Schematic of Angio-Seal™ deployment (Courtesy of St. Jude Medical)



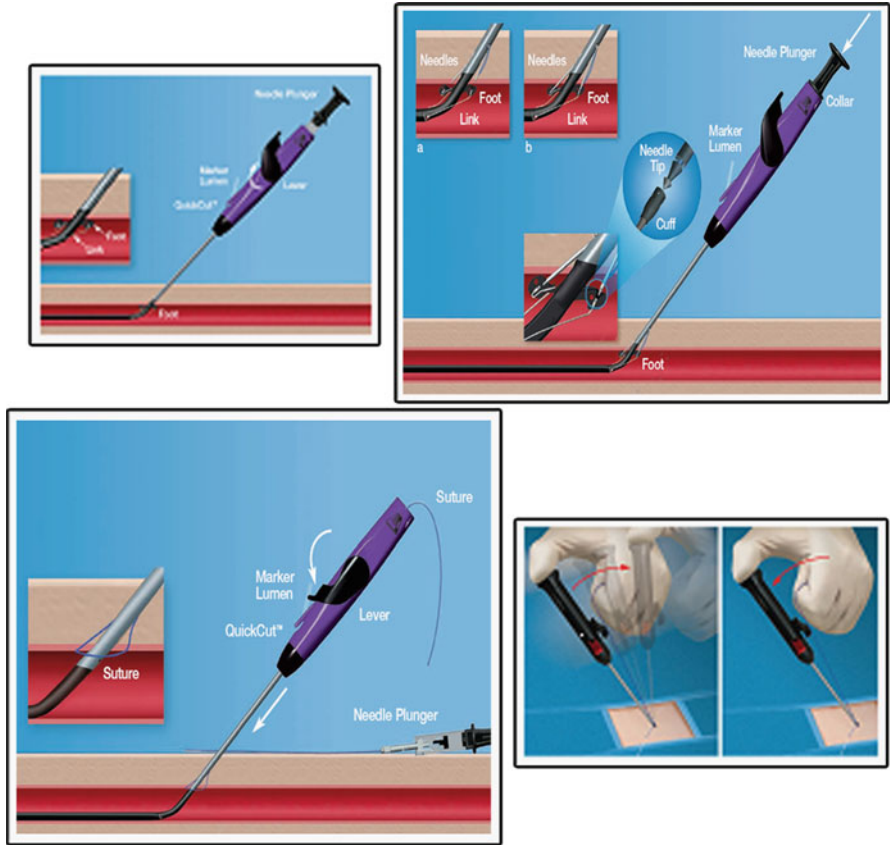


Fig. 7 Schematic of ProGlide™ deployment (Courtesy of Abbott Vascular)

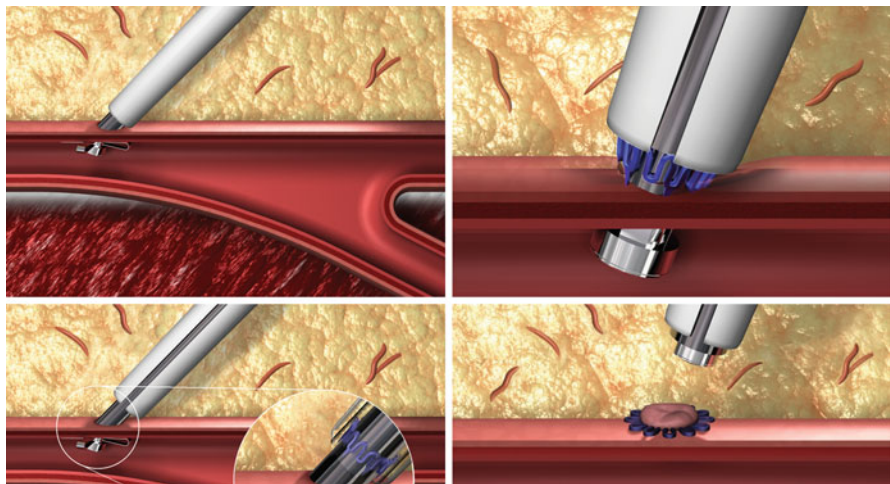


Fig. 8 Schematic of StarClose™ deployment (Courtesy of Abbott Vascular)

### Post-procedure Care

- Assess neurological status post procedure.
- Monitor groin and vitals frequently (e.g., every 15 min × 1st hour, every 30 min × 2nd hour, and once in 3rd hour).
- Bed rest for 2–4 h, depending on method of closure.
- Clear and concise instructions should be provided to the patient regarding activities and restrictions.
- Follow-up should be planned prior to discharge and is essential to ensure long-term patient well-being.

---

## Complications from Diagnostic Cerebral Angiography

### Groin

- Hematoma (2.5–5 %)
- Pseudoaneurysm (0.4–0.9 %)
- Infection (0.5–0.9 %)
- Limb ischaemia (0.2–0.4 %)
- Requirement for surgery (0.2–0.6 %)

### General

- Allergy (<0.04 %)
- Renal failure (depending on preexisting factors)

### Neurological

- Transient neurological deficit (0.3–0.4 %)
- Non-transient neurological deficit (<0.01 %)
- Asymptomatic cervical dissection (0.3–0.4 %)

### Key Points

- › Perform and review all noninvasive imaging initially.
- › Correct relative contraindications where possible.
- › Always check the groin pre puncture and check sheath position once in place
- › Always review the clinical indication and angiograms before removing the sheath.
- › Manual compression is the gold standard to close an arteriotomy.

---

## Suggested Reading

1. Biancari F, D'Andrea V, Di Marco C, Savino G, Tiozzo V, Catania A. Meta-analysis of randomized trials on the efficacy of vascular closure devices after diagnostic angiography and angioplasty. *Am Heart J*. 2010;159(4):518–31.
2. Circle of Willis. Contributed by Dr Frank Gaillard. 2008. [http://radiopaedia.org/articles/circle\\_of\\_willis](http://radiopaedia.org/articles/circle_of_willis).
3. Das R, Ahmed K, Athanasiou T, Morgan RA, Belli AM. Arterial closure devices versus manual compression for femoral haemostasis in interventional radiological procedures: a systematic review and meta-analysis. *Cardiovasc Intervent Radiol*. 2011;34(4):723–38. Epub 2010 Oct 29.
4. Dawkins AA, Evans AL, Wattam J, Romanowski CA, Connolly DJ, Hodgson TJ, Coley SC. Complications of cerebral angiography: a prospective analysis of 2,924 consecutive procedures. *Neuroradiology*. 2007;49(9):753–9. Epub 2007 Jun 27.
5. Layton KF, Kallmes DF, Cloft HJ, Lindell EP, Cox VS. Bovine aortic arch variant in humans: clarification of a common misnomer. *AJNR Am J Neuroradiol*. 2006;27(7):1541–2.
6. Nikolsky E, Mehran R, Halkin A, Aymong ED, Mintz GS, Lasic Z, Negoita M, Fahy M, Krieger S, Mousse I, Moses JW, Stone GW, Leon MB, Pocock SJ, Dangas G. Vascular complications associated with arteriotomy closure devices in patients undergoing percutaneous coronary procedures: a meta-analysis. *J Am Coll Cardiol*. 2004;44(6):1200–9.