
3

Nail Anatomy

Nail

- Dense keratinized plate

Nail bed

- Stratified squamous epithelium

Eponychium

- Distal edge of proximal nail fold

Nail root

- Base of the nail that underlies proximal nail fold

Nail matrix

- Beneath the nail root
- Germinative epithelium that produces the nail plate

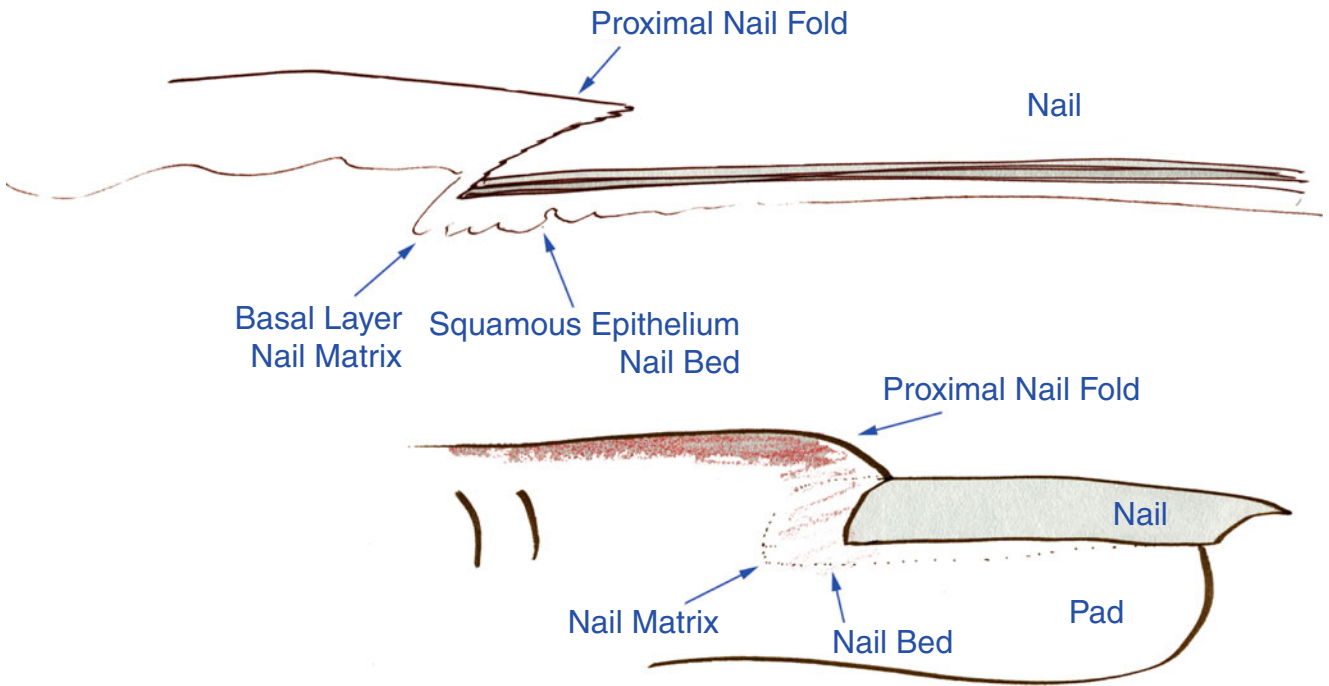


Fig. 3.1 Sketch of the Nail Unit. The nail matrix is at the base of the nail plate beneath the proximal nail fold; distal to the nail matrix is the nail bed

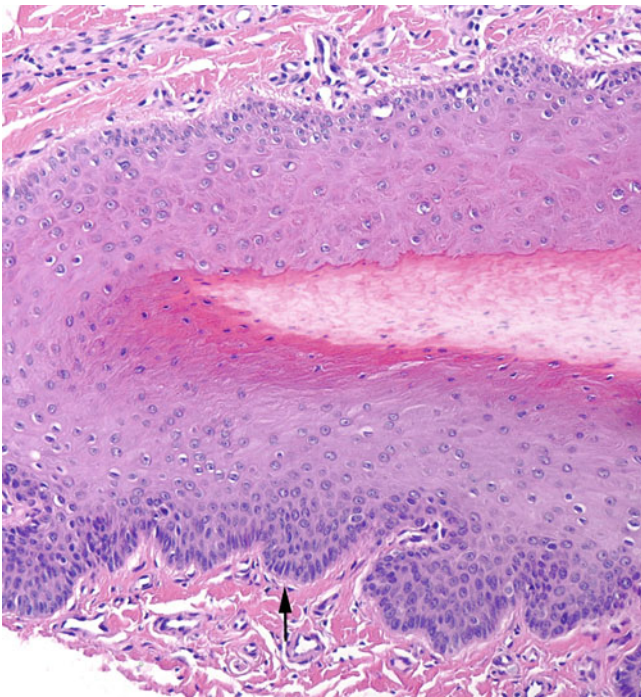


Fig. 3.2 Nail matrix. The basaloid germinal epithelium of the nail matrix produces the nail plate (*arrow*); damage to the nail matrix will lead to deformities of the nail plate

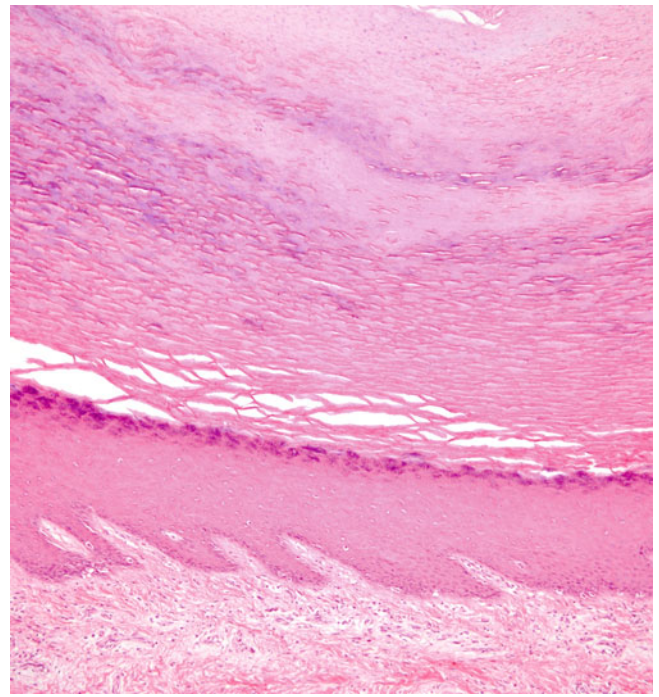


Fig. 3.3 Nail bed. The nail bed epithelium forms the underside of the nail plate