

Chapter 18

Proximate and Ultimate Control of Eel Continental Dispersal

Eric Edeline, Sylvie Dufour, and Pierre Elie

18.1 Introduction

Eels *Anguilla* spp. are fishes belonging to the Superorder Elopomorph, a group of phylogenetically ancient teleosts (Nelson 1994). Eels have ancestrally evolved a continental growth phase and thus migrate between marine breeding and continental feeding areas. In continental waters, eels colonize an extremely wide variety of salt (SW), brackish and freshwater (FW) habitats. Such ubiquity is almost unique among teleost fishes. However, the mechanisms controlling eel continental dispersal, i.e., distribution in different growth habitats, remain largely unknown. Dispersal is here understood in ecological terms and is thus referred to as movements leading to habitat colonization in general. Dispersal is a pivotal process for both species persistence and evolution, and involves a great diversity of ecological phenomena (Clobert et al. 2001). In the eel, dispersal in different habitats may influence survival, growth, sex differentiation, age and size at silvering [female size affects fecundity, egg-size and larval viability (Einum et al. 2004)], swimming ability during the spawning migration, and finally capacity to reproduce. In turn, decision-makings by individual dispersers for migration to, immigration in and emigration from different habitats depend on genetic, physiological, morphological and social attributes and are affected by a number of environmental parameters (Clobert et al. 2001).

In this chapter, we provide material to understand how (proximate control) and why (ultimate control) dispersal patterns by eels in continental habitats are what they

E. Edeline(✉)

Centre for Ecological and Evolutionary Synthesis (CEES), University of Oslo,
Dept. of Biology, P.O. Box 1066 Blindern, N-0316 Oslo, Norway

S. Dufour

Muséum National d'Histoire Naturelle, USM 0401, UMR CNRS/MNHN/UPMC 5178
"Biologie des Organismes Marins et Ecosystèmes", 7 rue Cuvier, CP 32, 75231
Paris Cedex 05, France

P. Elie

Cemagref, Unité "Ecosystèmes Estuariens et Poissons Migrateurs Amphihalins" (EPBX),
50 Avenue de Verdun, 33612 Cestas Cedex, France

are. In the first section, we describe the process of continental dispersal, focusing on the behavioural changes that occur during ontogeny. We emphasize the importance of considering separately *migration*, which is mainly an endogenously-controlled behaviour expressed by glass eels and elvers, from *ranging*, which is mainly an environmentally-controlled behaviour expressed by yellow eels. Based on this dichotomy, we review in the second and third sections the internal and external (environmental) drivers of movements. In the fourth section, we investigate the evolutionary forces acting on eel movements and we propose an evolutionarily stable strategy (ESS) model explaining how decision-making for movement by individual dispersers may be ultimately controlled. We further use this ESS model for qualitative predictions on the evolution of diadromy (i.e., colonisation of freshwater habitats) in response to anthropogenic changes in selective pressures. Finally, in the conclusion, we point out lack of knowledge and suggest future research directions.

18.2 Ontogeny of Eel Continental Dispersal

18.2.1 *Metamorphosis*

Metamorphosis is a drastic developmental strategy consisting of a suite of morphological, physiological and behavioural adaptive changes. In the eel, metamorphosis of translucent leptocephalus larvae, drifting from the oceanic spawning grounds, into late-metamorphic, unpigmented glass eels occurs on the slope of the continental shelf (Schmidt 1909; Tesch 1977). This transformation is an adaptive shift from oceanic drift to river colonization, and marks the start of the continental dispersal phase. The larva's body changes from willow-leaf to eel-shape, undergoes a reduction in length and weight, and an 80% drop in water content (Bertin 1951; Otake 2003). In addition, the brain structure is profoundly remodelled, with the external brain shape of the leptocephali gradually changing from laterally compressed to depressed elongated due to biased growth of the telencephalon and optic tectum (Tomoda and Uematsu 1996). Also, feeding activity stops due to the shedding of larval teeth and reorganization of the digestive system. Then, as shown in *A. anguilla* glass eels, the gut specializes for osmoregulation in FW, independent of the environmental salinity (Ciccoti et al. 1993). This indicates that, although they keep the ability to live and grow in SW, eels are ontogenetically programmed for FW residency. Body pigmentation progressively develops throughout the glass eel phase over different pigment stages VA, VB, VIA₀, VIA₁, VIA₂, VIA₃, VIA₄ and VIB, as defined by Elie et al. (1982). In this chapter, we will not use the term "elver" but instead term "glass eel" for all the development stages between the leptocephalus larvae and the newly transformed yellow eel (stage VII of Elie et al. 1982). Feeding resumption occurs around the pigment stage VIA₃ for most of individuals, after sufficient rearrangements of digestive organs and acquisition of a new set of teeth (Elie 1979). At feeding resumption, stomachs

contain mainly a mixture of plant and algal detritus that may be assimilated by the developing gut (Bardonnnet and Riera 2005). The true end of metamorphosis, marking the start of the juvenile growth phase (yellow phase), occurs at completion of body pigmentation (stage VII) and matches the full development of gut and teeth (Vilter 1945; Elie 1979; Elie et al. 1982; Jegstrup and Rosenkilde 2003). At that stage, eels start feeding on macro-invertebrates and will progressively shift towards piscivory (Tesch 1977). The colonization of continental habitats is carried out by both the glass and yellow eels, but with quite different modalities.

18.2.2 Glass Eel Dispersal

Glass eels invade coastal and estuarine waters using selective tidal stream transport (STST), a saltatory transport mechanism with alternations of flow-carried swimming during flood tide and benthic sheltering behaviour during ebb tides (Creutzberg 1958; McCleave and Kleckner 1982; Elie and Rochard 1994). STST allows important energy saving compared to constant counter-current swimming (Weihs 1978). Glass eels orientate towards the river mouth and up-estuary following decreasing salinity gradients (Tosi et al. 1990) and river water odours (Creutzberg 1961). Thermal gradients could also play a role in glass eel orientation (Tosi et al. 1990). As they reach the tidal limit (limit of flow reversals), migrating glass eels lose tidal advection for transport and have to switch from STST to constant counter-current swimming (McCleave and Wippelhauser 1987). We have investigated glass eel migration at the obstacle-free tidal limit area of the Dordogne River (France) during a 2-year field study (Edeline et al. 2007). This tidal limit is located about 50 km upstream from the salinity front, and thus provides a rare opportunity to separate the effects of salinity and hydrodynamics on the migration process. We have monitored the distributions of glass eels (pigment stages VB to VIB) vs. newly transformed yellow eels (stage VII, body length <15 cm) at five sites (coded A, B, C, D and E). Site C was located at the limit of flow reversals, i.e., at the point of the watershed where glass eels lose tidal advection for STST. The results indicate that glass eels arriving from the sea rapidly migrated up-estuary. Then, despite the absence of any osmotic barrier, glass eels accumulated at the limit of flow reversals (site C, Fig. 18.1). Upstream of this accumulation point, migration speed dropped and glass eels transformed into small yellow eels before reaching the non-tidal river area, where only small yellow eels and no glass eels were found (site E, Fig. 18.1). This finding is in accordance with other data indicating almost complete absence of glass eels among inland river colonizers (Haro and Krueger 1988; Michaud et al. 1988; Naismith and Knights 1988; Dutil et al. 1989; McGovern and McCarthy 1992; White and Knights 1997b). Together, these results indicate that glass eels are strongly dependent on tidal streams for upstream movements and poorly adapted to colonization of non-tidal rivers. Therefore, the late-metamorphic glass eel should be considered as a transitory developmental stage between the oceanic larva and the continental juvenile, adapted to the colonization of tidal interface habitats by means of STST.

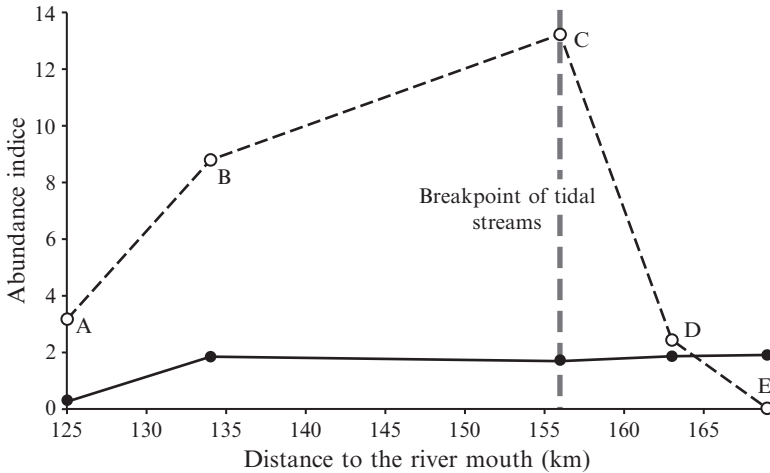


Fig. 18.1 Ontogeny of eel dispersal behaviour, adapted from Edeline et al. (2007). Distributions of glass eels (dotted line) and newly transformed yellow eels (body length <15 cm, solid line) around the tidal limit of the Dordogne River (France). Eels were sampled at five sites (A, B, C, D and E) located at increasing distance from the river mouth. Site C was located at the breakpoint of tidal streams. Glass eels accumulated at site C, most likely due to the loss of tidal streams available for selective tidal stream transport (STST). In contrast, newly transformed yellow eels were homogeneously distributed around site C. This result is most parsimoniously interpreted as a behavioural shift from upstream migration to settlement and food search during the completion of larval metamorphosis (see Section 18.2.3). Abundance indices (y axis) were obtained by multiplying the estimated probability of presence of a fish at each sampling site, by the estimated abundance of fish when fish was present, taking into account the effects of several important environmental variables in generalized linear models (For further details, see Edeline et al. 2007)

18.2.3 Yellow Eel Dispersal

The distribution pattern of small yellow eels in the tidal limit area of the Dordogne River was quite different from that of glass eels (Fig. 18.1), suggesting that completion of larval metamorphosis was related to a pronounced change in dispersal behaviour (Edeline et al. 2007). Upstream migratory movements by newly transformed yellow eels should have induced increased abundance upstream of the site where they accumulated as glass eels (site C, Fig. 18.1). Instead, abundance remained almost constant between sites B and E, suggesting a loss of the upstream-oriented migratory behaviour at the onset of the growth phase. This result matches with experimental aquarium data indicating a shift from pelagic towards benthic behaviour during the transformation of glass eels into small yellow eels (Jegstrup and Rosenkilde 2003). Therefore, termination of metamorphosis and full development of feeding capacity seem to mark the end of the larval migratory period in the European eel, as commonly observed in benthic marine fishes (Moran 1994). Homogenous distribution of newly transformed small yellow eels after initial accumulation at the glass eel stage further suggests density dependent dispersal (Edeline et al. 2007). This hypothesis is supported by recent

studies suggesting that upriver movements by yellow eel are largely density-dependent (Smogor et al. 1995; Ibbotson et al. 2002; Feunteun et al. 2003; Briand et al. 2005a). Based on the aforementioned results, we may propose a typical ontogenetic pattern for eel dispersal behaviour. According to Dingle (2006), during migration the individual is not distracted from movement by resource-based stimuli like food or living space. This definition clearly fits glass eel movements because glass eels move upstream even if resources are more abundant in the estuary or on the coastline. In contrast, at the yellow stage, movements are driven by the search for food or other resources, and also aim at avoiding competitors and predators (see Section 18.4.7). These movements are clearly not migratory because they cease when a resource is encountered (Dingle 2006). We here choose to refer to these non-migratory yellow eel movements as “ranging”, because they occur at the home range scale-either within or between home ranges [but see Dingle (2006) for further development]. Finally, we define settlement as the behavioural shift from migration to ranging.

18.2.4 Variability of the Eel Dispersal Phenotype

We have now defined the typical ontogenetic pattern for European eel continental dispersal: eels migrate upstream at the glass eel stage, settle at the onset of the yellow stage and then shift to ranging behaviour. However, there is probably a large variability around this typical (or average) ontogenetic pattern. Indeed, settlement is a complex trait involving a number of morphological, physiological and behavioural changes, and complex traits generally show a large variability in populations. In accordance with the view that settlement timing is highly variable, otolith microchemistry shows that some eels never enter freshwater but settle at the glass eel stage at sea or in the estuary (Tsukamoto and Arai 2001; Daverat et al. 2006). Settlement may also occur after the onset of the yellow eel stage. Indeed, small yellow eels may show intense upriver migratory behaviour during spring “runs”, and some larger (“pioneer”) yellow eels may maintain density-independent, upstream migration (Feunteun et al. 2003).

After settlement, ranging may be aperiodic or instead occur on a periodic basis, and include movements within and between home ranges that may cross salinity boundaries. For instance, seasonal ranging movements by yellow eels may occur between the river and the estuary (Tesch 1977; Daverat et al. 2006). The combination of variability in settlement timing and ranging movements leads to a very large diversity of continental dispersal patterns - this diversity is stressed by otolith microchemistry studies. How the variability of pre-and post-settlement movements is controlled is discussed in the three following sections. The definition of migration given above - that a migrant is not responsive to resource - based stimuli - implies that migration is primarily driven endogenously. However, it should be kept in mind that environmental factors may still affect many internal drivers. Reciprocally, ranging behaviour is mainly controlled by the environment, but final decisions for moving or staying remain under endogenous control.

18.3 Internal Drivers of Eel Continental Dispersal

18.3.1 Genetic Factors

Despite its central importance for both ecological and conservation purposes, the genetic control of eel life history has been historically neglected. Indeed, many authors implicitly consider that phenotypic diversity results from a single genotype showing different norms of reaction in response to various environmental effects. However, assuming no genetic variation (i.e., one genotype) for migratory behaviour simply implies that migration cannot evolve, because evolution results from sorting of genotypes by selection (Futuyma 1998). Instead, in both vertebrates and invertebrates, migration is an heritable syndrome (i.e., a complex trait) that requires genetic programming for morphological, physiological and behavioural adaptations (Berthold 1991; Pulido et al. 1996; Futuyma 1998; Roff and Fairbairn 2001; Alerstam et al. 2003; Dingle 2006). Typically, these adaptations are controlled by many loci each with a small additive effect (polygenic model) together bearing considerable genetic variation (Berthold and Pulido 1994; Futuyma 1998; Roff and Fairbairn 2001). Accordingly, recent studies have shown significant genetic variation in *A. anguilla* (Daemen et al. 2001; Wirth and Bernatchez 2001; Maes and Volckaert 2002; Dannewitz et al. 2005), that may be correlated to fitness-related traits (Pujolar et al. 2005). In the genus *Anguilla*, genetic diversity for migratory traits is necessary to explain evolution of diadromy from ancestral marine residency (Gross et al. 1988), as well as spatiotemporal shifts of migration loops (migration route and life cycle) that caused separation into subpopulations and speciation (Tsukamoto et al. 2002).

18.3.2 Body Condition

Body condition, i.e., energetic status, is a parameter of major importance that influences dispersal in birds and mammals (Dufty and Belthoff 2001). In anadromous fishes, limitations in energy reserves constitute a major constraint for migration (Bernatchez and Dodson 1987; Jonsson et al. 1997; Forseth et al. 1999). Migrating glass eels, due to both their small size and non-trophic state, are likely prone to energetic constraints. Indeed, decreased body condition triggers a swap from FW- to SW-preference and a shift from migration to settlement in glass eels (Bardonnet et al. 2003; Edeline et al. 2004, 2006; Bureau du Colombier et al. 2007). This energetically-controlled migratory plasticity likely reflects an adaptive threshold (see Section 18.5). Indeed, high body condition fishes will gain the highest fitness return by migrating to low-density river habitats (see Sections 18.4.7 and 18.5), while low body condition individuals increase their fitness by stopping migration-related energy expenditure and settling precociously in saline habitats. Glass eels are recruited into estuaries during migration peaks lasting for several months (Tesch 1977). The body condition of estuarine recruits decreases over this migration period in *A. anguilla* (Elie 1979; Charlon and Blanc 1982), *A. rostrata* (Jessop 1998), *A. japonica* (Kawakami et al. 1999), *A. reinhardtii*, *A.*

australis (Sloane 1984) and *A. dieffenbachii* (Jellyman and Lambert 2003), possibly due to a decreased productivity of oceanic ecosystems during the larval migration period (Désaunay and Guerault 1997). Hence, the propensity to colonize river rather than marine and estuarine habitats is probably higher in early than in late recruits. Also, longer term oscillations in oceanic productivity (Désaunay and Guerault 1997) might plastically affect the proportion of diadromous individuals among recruits.

18.3.3 Endocrine Factors

Because they integrate both the genetic and environmental influences and, in turn, regulate gene transcription, neuronal and metabolic activities, hormones are key behavioural mediators. Diadromous fish migrations are under endocrine control (Fontaine 1975). During salmonid smoltification, pre-adaptation to SW residency is controlled in synergy by growth hormone (GH) and cortisol (Boeuf 1993; McCormick 2001), while thyroid hormones (THs, thyroxine T_4 and triiodothyronine T_3) are involved in many adaptive processes including olfactory imprinting (Lema and Nevitt 2004), changes in muscle physiology (Katzman and Cech 2001), and rheotaxis (Specker et al. 2000). In the eel also, THs have a crucial role in controlling leptocephalus metamorphosis (Yamano et al. 1991; Ozaki et al. 2000) body pigmentation and gut transformations (Vilter 1946; Jegstrup and Rosenkilde 2003). In glass eels, THs further stimulate migratory behaviour (Edeline et al. 2004, 2005b). Therefore, THs play a key role in the regulation of morphological, physiological and behavioural adaptations leading to the colonization of FW habitats by the eel. Thyroid gland activity decreases at the yellow stage (Callamand and Fontaine 1942), likely promoting the observed switch from migration to settlement during transformation of glass eels into small yellow eels (see Section 18.2.3). In yellow eels, individuals caught climbing water falls also have higher plasma T_4 levels and locomotor activity compared to sedentary individuals (Castonguay et al. 1990), suggesting that maintenance of a high thyroid gland activity at the yellow stage delays settlement.

It seems likely that cortisol and GH are also involved in the regulation of glass eel dispersal (Fig. 18.2). Indeed, in both glass and yellow eels, cortisol promotes gill and intestine Na^+/K^+ -ATPase activity, i.e., adaptation to SW residency, probably in synergy with GH (Epstein et al. 1971; Butler and Carmichael 1972; Wilson et al. 2004). In addition, cortisol injections decrease plasma THs levels (Redding et al. 1986), while THs exert a negative feedback on GH production by the pituitary, an eel-specific regulation (Rousseau et al. 2002). These crossed negative feedbacks between THs vs. cortisol-GH could mediate the swap of glass eels from FW-oriented migration to settlement induced by a lowered body condition (Fig. 18.2). Indeed, in teleosts, a lowered caloric status induces decreased thyroid gland activity (Eales 1988). In glass eels, a low body condition correlates to low thyroid gland activity (Edeline et al. 2004) and high GH levels (Lambert et al. 2003), while physiological stress and fasting in yellow eels stimulate GH and cortisol secretion through brain production of corticotropin-releasing hormone (Marchelidon et al. 1996; Rousseau et al. 1999; Dufour et al. 2001).

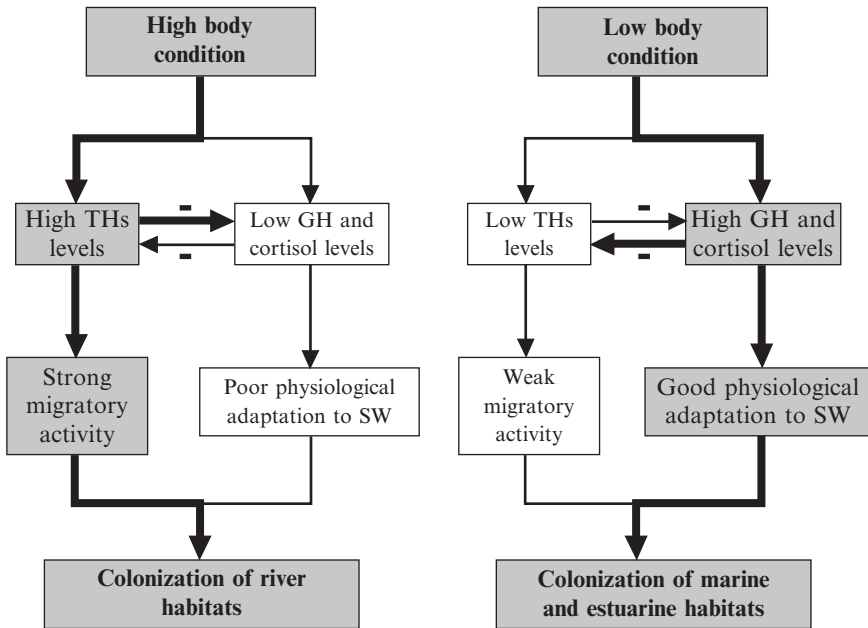


Fig. 18.2 Hypothetical endocrine mechanism for the control of glass eel migratory plasticity based on the results provided in Section 18.3.3. Thyroid hormones (THs) induce a river-oriented migratory behaviour, but also exert a reciprocal negative feedback on cortisol and growth hormone (GH) production, which are both involved in saltwater (SW) acclimation. Left panel: individual's physiology is "THs-dominated". We suggest that a satisfying energetic status (high body condition, see Section 18.3.2) may stimulate thyroid gland activity. Then, high THs levels maintain low GH and cortisol levels and promote colonization of river habitats. Right panel: we depict a possible endocrine switch to a "GH-cortisol-dominated" physiology (bold vs. thin arrows). Decreasing energetic status lowers THs production and increases GH and cortisol secretion, inducing low migratory activity and good hypoosmoregulatory ability. We suggest that shift from a "THs-dominated" to a "GH-cortisol-dominated" physiology occur when individual's energetic status reaches a switch point described in Section 18.5

18.4 External Drivers of Eel Continental Dispersal

18.4.1 Tidal Streams: The Importance of STST

As indicated by their behavioural adaptation to tidal streams (the STST), glass eels are strongly constrained in their movements by the water current, that may either represent a transport vector or a migration barrier depending on its direction. At the tidal limit, migrating glass eels accumulate because tidal advection is no longer available to support upstream movements (see Section 18.2.2). In estuaries, glass eels may be found swimming in the water column during ebb-tide, while the use of STST for migration implies sheltering close to the bottom during ebb-tide. These

ebb-tide glass eels present signs of physiological stress, similar to settling glass eels that remain on the bottom of the estuary during flood tide (Edeline et al. 2004). These results suggest that an inefficient use of tidal streams (by ebb-tide glass eels) is one of the mechanisms that could lead precocious settlement in saline habitats at the glass eel stage through a sequence presented in Fig. 18.3.

The rhythmic activity during STST is triggered by both exogenous olfactory cues (Creutzberg 1959; Barbin et al. 1998) and endogenous cues produced by an internal circatidal clock, which rhythm is synchronized by flow reversals (Wippelhauser and McCleave 1988). Disruption of these phasing mechanisms could hinder effective utilization of tidal streams (Fig. 18.3). For instance, pollutants could affect fine sensory processing of water currents and odours necessary for synchronization of the internal clock. Indeed, pollutants may damage olfactory neurons (Halpern 1982) and may also affect a variety of behaviours through the upsetting of sensory, hormonal, neurological, and metabolic systems (Scott and Sloman 2004). Also, in poikilotherms, temperature is a very strong synchronizer of internal oscillators. Slight temperature changes may induce phase shifting of endogenous rhythms

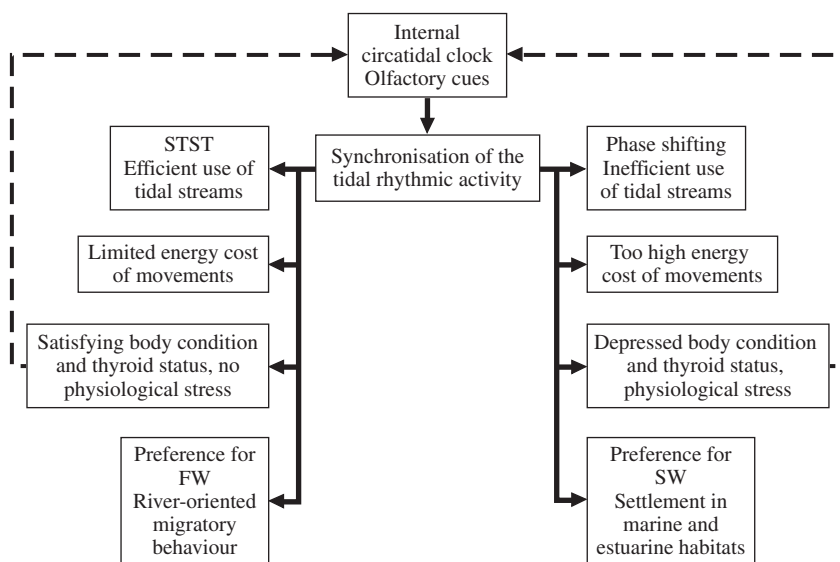


Fig. 18.3 Proximate mechanism for the control of glass eel dispersal by tidal streams based on the results provided in Section 18.4.1. The rhythmic activity during selective tidal stream transport (STST) is triggered by both endogenous (internal clock) and exogenous (olfactory) cues. A rhythmic swimming activity in phase with flood tides allows energy saving and maintenance of satisfying energetic status and high thyroid gland activity, which promote preference for freshwater (FW) and a river-oriented migratory behaviour. In contrast, a phase shifting in activity rhythm, preventing glass eels from efficient using of tidal streams as transport means, leads to physiological stress through the resultant high energy cost of movements. This decreases thyroid gland activity and promotes preference for saltwater (SW), loss of migratory behaviour and finally settlement. We suggest that the physiological condition could possibly exert a feedback on the synchronization of rhythmic activity (dotted arrows) because THs could be involved in olfactory sensitivity (see Section 18.3.3)

through alterations of the clock molecular machinery (Rensing and Ruoff 2002). Accordingly, in *A. japonica* glass eels kept under free-running conditions, a slight temperature change may shift the rhythm of the internal circatidal clock (Kim et al. 2002). Such temperature-mediated phase shifting in the internal tidal clock may be one of the processes leading to an inefficient use of tidal streams by glass eels (see Fig. 18.3).

18.4.2 Salinity

Salinity is a major environmental factor that affects fish distribution (Jung and Houde 2003) and growth (Boeuf and Payan 2001). In the eel, salinity tolerance varies during development. Both glass eels and silver eels show an extraordinary capacity to cope with abrupt salinity transfers (Fontaine and Raffy 1932; Wilson et al. 2004) but osmotic tolerance decreases in small yellow eels (Boucher-Firly 1935) which may suffer high mortalities during acute transfer from FW (0 ppm) to SW (35 ppm) (E. Edeline, unpublished data (2002): 100% mortality among 197 newly transformed small yellow eels previously held and fed in FW for 2 months). Salinity is likely to influence eel movements during both migration and ranging. Indeed, despite exceptional osmotic tolerance, glass eels arriving from the sea need a delay period before voluntary entry into FW (Petit and Vilter 1944; Deelder 1958), indicating that salinity preference may reflect subtle processes that are not revealed by osmoregulation studies. Salinity preference tests show that, at arrival from the sea, the proportion of FW-seeking glass eels varies between 50% and 70% (Tosi et al. 1988; Tosi et al. 1989, 1990), suggesting inter-individual variation in salinity preference that could possibly influence migration and/or habitat selection.

In order to investigate the role of glass eel salinity preference in the control of eel migration, Edeline et al. (2005a) sorted groups of *A. anguilla* glass eels (hereafter termed “contingents”) over two consecutive salinity preference tests. This allowed us to study the link between salinity preference and locomotor activity (i.e., positive rheotaxis), and to separate contingents of glass eels that were either plastic or fixed in their preference for FW or SW. During the first trial series, 3,193 glass eels were tested for salinity preference 1, 2 and 3 days after capture; 864 were active (i.e., actively swam towards either a FW or a SW flow). All the active glass eels, as well as a batch ($n = 543$) of inactive fish, were kept to perform the second behavioural test. The other fish (the rest of the inactive glass eels) were released. During the second trial series, we tested these two batches (543 inactive and 864 active glass eels) for their salinity preference, 9 and 10 days after capture. After the second trial, the 543 glass eels that had been inactive during the first trial were released. Among the 864 glass eels that had been active during the first trial series, 526 were again active during the second trial series. These 526 fish were used to carry out a growth experiment (see below), while the others were released. We classified the 526 glass eels that were active during the two trials into contingents according to

their salinity preference: FWC ($n = 240$) for FW contingent (double preference for FW), SWC ($n = 47$) for SW contingent (double preference for SW), and PCC ($n = 239$) for plastic contingent (shift in salinity preference over the acclimatization period: from SW to FW, or from FW to SW). Somatic growth of these three contingents was then monitored during 2 months under excess feeding in controlled FW and SW conditions.

During the two behavioural tests, locomotor activity and salinity preference were significantly linked. Indeed, the glass eels that were active during the first trial (preferring either FW or SW) showed a high locomotor activity during the second trial but also a sharp preference for FW, even if SW had been preferred first. This result indicated that a high locomotor activity was associated with FW preference in glass eels, a behavioural syndrome likely promoting migration to the river (Edeline et al. 2005a). In contrast, inactivity during the first trial was associated with a low locomotor activity during the second trial, but also to a preference for SW if the fish were active. This result indicated that low locomotor activity was associated with SW preference in glass eels, a behavioural syndrome probably promoting an early settlement in marine and estuarine habitats (Edeline et al. 2005a).

Additionally, the behavioural syndromes observed during the behavioural tests were associated with growth patterns that fitted with the observed growth patterns of yellow eels in the wild. Indeed, the FWC (i.e. glass eels that preferred FW twice) had the lowest growth rates in both FW and SW rearing conditions. In contrast, the SWC (i.e. glass eels that preferred SW twice) had the highest growth rates in SW rearing conditions. These results suggest a trade-off (negative correlation) between migration and growth, in accordance with data from the wild showing that freshwater eels grow more slowly than estuarine eels (Tzeng et al. 2003; Jessop et al. 2004; Daverat and Tomás 2006). Additionally, growth was higher in SW than in FW in all contingents, indicating that, in addition to the migration/growth trade-off, habitat salinity may directly affect growth (Edeline et al. 2005a). The PCC (i.e. glass eels that swapped their salinity preference) had an intermediary growth status that could be related to the nomad life style of eels moving between different habitat types during their life (Feunteun et al. 2003; Daverat and Tomás 2006). The results from this behavioural – growth experiment provide a comprehensive ecological mechanism for the control of habitat distribution and growth patterns in glass and yellow eels, as presented in Fig. 18.4.

Trade-offs between migration and other fitness-related traits are frequent because migration incurs heavy fitness costs (Roff and Fairbairn 2001), and may involve various ecological, physiological, and genetic pathways (Zera and Harshman 2001). In juvenile eels, the links between locomotor activity, salinity preference and growth probably involve complex interactions of several mediators, including metabolic hormones and genes (Fig. 18.4). The speculations presented in Fig. 18.4 are based on the facts that: (1) THs promote locomotor activity in glass eels (Edeline et al. 2005b) and have also been shown to affect salinity preference (Baggerman 1960, 1962; Iwata 1995) and growth (Higgs et al. 1982) in other teleosts, (2) GH affects growth, acclimation to SW (see Section 18.3.3) and locomotor activity in salmonids (Øverli et al. 2002; Johansson et al. 2004), and (3) genes

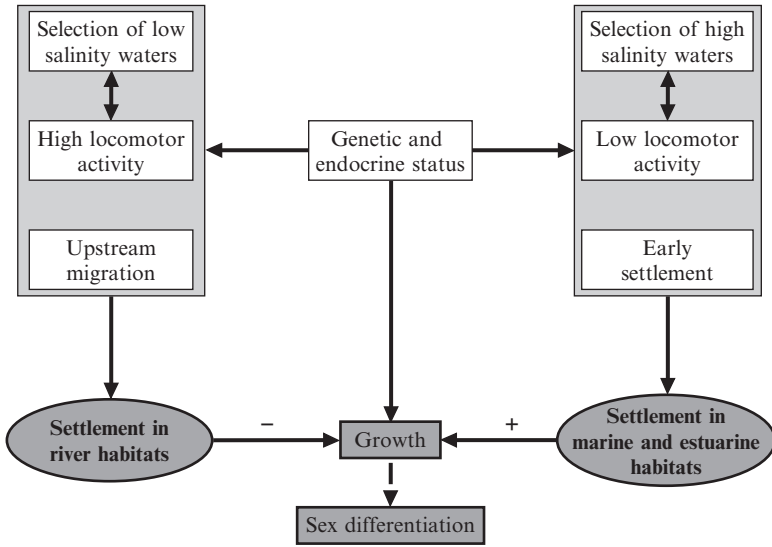


Fig. 18.4 A simple mechanism for the proximate control of eel life history in continental habitats based on the results provided in Section 18.4.2. Non-filled boxes refer to processes occurring in glass eels and elvers (hereafter simply termed glass eels), while grey boxes refer to processes occurring in yellow eels. In glass eels, locomotor activity and salinity preference are correlated (double arrows) and participate in driving upstream migratory behaviour. High locomotor activity and preference for FW lead to upstream migration and diadromy, while a low locomotor activity and preference for SW favour an early settlement and non-diadromy. At the yellow stage, habitat salinity and primary productivity directly influence somatic growth (+ and -). However, we further suggest occurrence of a trade-off between migration and somatic growth, presumably through endocrine and genetic pathways. High migratory propensity at the glass eel stage seems to be correlated with low juvenile growth rates, while a low migratory propensity by glass eels seems to be related to high juvenile growth rates. Following other authors, it is suggested that growth rate during the first year of continental life could affect sex differentiation (dotted line)

(allozyme heterozygosity) affects both salinity tolerance in teleosts (Shikano et al. 2000) and growth performance in *A. anguilla* (Pujolar et al. 2005). Finally, migratory behaviour could also be correlated to sex differentiation through growth (Fig. 18.4). Indeed, recent data suggest that slow growth rates during the first year of continental life may favour female sex differentiation (Holmgren and Mosegaard 1996; Holmgren et al. 1997; Davey and Jellyman 2005)

18.4.3 Water Temperature

Water temperature profoundly affects the whole metabolic machinery and is thus a crucial driver for eel dispersal plasticity. In glass eels, both the estuarine migration and river recruitment are conditioned by temperature thresholds

(Vøllestad and Jonsson 1988; McGovern and McCarthy 1992; Elie and Rochard 1994; Jessop 2003). Accordingly, under experimental conditions, a temperature increase from 10°C to 18°C enhances both locomotor activity (i.e. positive rheotaxis) and FW-preference (Edeline et al. 2006). Runs of small yellow eels in rivers are also triggered by a rise in water temperature; the temperature-dependency of movements decreases with increasing body size (Moriarty 1986; Naismith and Knights 1988; White and Knights 1997b). There are several physiological mechanisms by which temperature may affect locomotion. Decreased environmental temperatures primarily act in reducing enzymatic activities and fluidity of both membranes and internal liquids, causing a drop in the power output from muscles (Johnston and Temple 2002). Water temperature also affects endocrine secretions. In *A. anguilla* yellow eels, thyroid gland activity decreases with water temperature (Leloup 1958; Leloup and De Luze 1985) and, in glass eels, a fall in water temperature slows down the process of metamorphosis (Briand et al. 2005b). Finally, habitat selection at the patch scale may be affected by water temperature (Chen and Chen 1991; Richardson et al. 1994). Thermal preferences match with optimal temperatures for growth (Elie and Daguzan 1976), suggesting that preference is related to optimal functioning of the enzymatic machinery.

18.4.4 Water Odour, Migration and Habitat Selection

Odours are widely known to guide salmon to their native stream during spawning migration (Døving and Stabell 2002). According to the definition of Harden-Jones (1984), migratory fishes may use water odour as a “cue” triggering movements (i.e., shift from inactivity to activity) above sensitivity thresholds, and/or as a “clue” orienting movements through odorous gradients once the fish is in motion (i.e., after the cue triggered onset of movement). In glass eels, the smell of inland waters is thought to provide a cue triggering the onset of swimming during STST (see Section 18.4.1), but also clues orienting movements towards rivers (Creutzberg 1961). Attraction is due to several earthy compounds (Sorensen 1986; Tosi and Sola 1993; Sola 1995), that may either attract or repel glass eels depending on environmental salinity (Sola and Tongiorgi 1996). It has been hypothesized that orientation towards earthy odorants during migration evolved because these compounds are indicative of habitat primary productivity (Sorensen 1986). Odours also transmit social information. Both glass eels (Briand et al. 2002) and yellow eels (Saglio 1982) are attracted by the odour of conspecifics, possibly through epidermal mucous compounds (Saglio 1982), bile salts (Sola and Tosi 1993) and amino acids (Sola et al. 1993; Sola and Tongiorgi 1998). Chemoattraction could promote glass eel’s grouping behaviour during migration, mediate conspecific recognition and allow food location during ranging (Sola and Tongiorgi 1998). Therefore, odorous signals may be seen as mediators of optimal foraging and optimal habitat selection by dispersers during ranging.

18.4.5 Light and Photoperiod

In both plants and animals, light is one of the most important synchronizers of internal rhythms (Hastings et al. 1991). Photoperiodic (seasonal) information is transformed into a melatonin secretory rhythm that, through hypothalamic stimulation, regulates many biological functions such as growth and reproduction (Bolliet et al. 1996; Boeuf and Le Bail 1999; Falcon et al. 2003). In teleosts, photoperiod affects circulating levels of numerous hormones, including GH (Björnsson et al. 1994), THs (Leiner and McKenzie 2001) and reproductive hormones (Blázquez et al. 1998). In salmonids, the spring increase in daylength is one of the factors triggering smoltification (Hoar 1988). In the eel, the effects of photoperiod variations on physiology and behaviour remain unexplored, but it is well known that light inhibits eel movements. Glass eels are strongly photonegative (Bardonnet et al. 2003; Dou and Tsukamoto 2003), and light avoidance increases with body pigmentation (Bardonnet et al. 2005). In estuaries, glass eels avoid both the daylight and moonlight by remaining on the bottom or swimming deeper in the water column (Creutzberg 1961; Elie and Rochard 1994; De Casamajor et al. 2000). Yellow eels also show nocturnal foraging activity (Bertin 1951; Tesch 1977; Baisez 2001), reduced during full moon periods (Adam and Elie 1994). This light inhibition of eel movements is mediated by increased secretion of brain catecholamines (Le Bras 1978, 1984). Finally, both glass eels (Wippelhauser and McCleave 1988) and silver eels (Edel 1976) have circadian activity rhythms in free-running conditions, suggesting occurrence of an internal circadian clock.

18.4.6 Anthropogenic Pressures

Anthropogenic pressures on aquatic environments may be considered critical to eel continental dispersal (Feunteun 2002). First, global warming affects oceanic gyres, reduces nutrient availability and slows down oceanic migration, and could thus increase larval mortality through enhanced starvation and predation (Knights 2003). On the other hand, continental influences should not be neglected. Overharvesting, habitat fragmentation and loss, and introduction of exotic species are strong agents of selection and may drive species to extinction (Stockwell et al. 2003). For instance, estuarine fisheries may deplete a large proportion of the migrating glass eels. In the Vilaine River, where a dam blocks upstream movement, the fishery removes up to 99% of the glass eel stock (Briand et al. 2003). In barrier-free estuaries, exploitation rates are probably sharply reduced but glass eel fisheries, by selectively targeting migrants using STST, could possibly favour evolution towards reduced migratory behaviour in the population on a decadal time scale (see Section 18.5). Indeed, fisheries may induce rapid life history evolution in fish populations (Law 2000). Furthermore, dams dramatically decrease habitat accessibility (White and Knights 1997a; Lafaille et al. 2005), and could possibly

increase mortality in migrants that accumulate below the obstacle. Introduction of strong FW predators such as *Silurus glanis* could also seriously impair the benefits from colonizing river habitats. Finally, pollution impacts fitness through decreased individual condition and genetic erosion (Maes et al. 2005), and probably also disrupts complex behaviours through various endocrine and metabolic pathways (Robinet and Feunteun 2002; Scott and Sloman 2004).

18.4.7 Social Interactions

Social interactions are critical to animal dispersal (Clobert et al. 2001). In the eel, social entrainment to migration (i.e., positive density-dependent migration) is likely to occur through schooling behaviour (Tesch 1977). However, it is probably during ranging that social interactions play their major role in driving eel continental dispersal patterns. Indeed, yellow eels are strongly agonistic and confrontations may induce severe injuries or even death of the defeated individual (Bertin 1951; Tesch 1977; Peters et al. 1980). This agonistic behaviour is coupled to cannibalism (Degani and Levanon 1983; Knights 1987) and results in negative density-dependent survival (Vøllestad and Jonsson 1988; Briand et al. 2005a) and growth (Degani et al. 1988; Beentjes and Jellyman 2003). In mammals, competition for food and space and agonistic interactions are known to induce positive density-dependent dispersal (Sutherland et al. 2002). The same is likely to be true for the eel. In other words, how far yellow eels disperse from the habitat where they settled (the tidal limit area for many individuals) should be positively related to the density of dominant eels present in this habitat. Indeed, several recent studies indicate that river colonization by yellow eels is positively density-dependent, i.e., is a process equivalent to random diffusion of particles driven by density at the point source (Smogor et al. 1995; Ibbotson et al. 2002; Feunteun et al. 2003; Briand et al. 2005a).

Under density-dependent ranging, the many environmental (seasonal or not) variations that may alter the social structure of local populations will promote a reorganization of distributions, following a model of a patchy “fluid mosaic” (Feunteun et al. 2003). Depending on availability of habitat resources (space, water temperature, food availability, dissolved oxygen, etc.) and/or demographic parameters (density, proportion of dominant eels, etc.), subordinate eels shift towards habitats where survival and growth conditions are better (see also Section 18.5.2). This density-dependent ranging period is by far the longest of the continental phase, giving opportunity for generation of a very large variety of dispersal patterns. How often an individual will cross salinity boundaries during this period may partly depend on its osmotic capacities (see Section 18.4.2). In conclusion, social interactions combined with habitat variations represent major cues inducing plastic dispersal responses through ranging movements. However, we suggest that social interactions further represent a major selective force for the evolution of migration and timing of settlement because they induce habitat-specific survival and growth. This point is developed in the following section.

18.5 Ultimate Control of Eel Continental Dispersal

Game theory and associated concepts such as the Evolutionarily Stable Strategy (ESS) provide a framework for studying eel alternative phenotypes in terms of their costs and benefits to evolutionary fitness. We have analysed eel continental dispersal in the context of evolutionarily stable strategies, considering movement as a threshold trait with two alternative values: moving or staying. For the sake of clarity we have equated moving with diadromy (i.e. colonization of FW habitats) and staying with non-diadromy (i.e. colonization of SW habitats), but we suggest that the approach is valid for any type of movement.

18.5.1 *The Cost/Benefits Fitness Ratio of Diadromy*

Evolution of diadromy should be seen as driven by a ratio between its costs and benefits in terms of fitness (Gross et al. 1988; Edeline 2007). Diadromy provides evolutionary benefits because it may give access to increased food resources (Gross et al. 1988). In eels, diadromy may be considered as an ancestral trait. Indeed, eels appeared in tropical oceans where they probably evolved diadromy from a marine ancestor because primary productivity is higher in FW than in SW at low latitudes (Aoyama et al. 2001; Tsukamoto et al. 2002). Colonization of temperate oceans by several eel species has promoted evolution of a facultative diadromy (i.e., a fraction of the population never enter FWD presumably because relative productivity of rivers decreases compared to the sea, estuaries or deltas (Tsukamoto and Arai 2001). However, diadromy remains the predominant migratory tactic in temperate eels, as suggested by the ontogenetic programming of *A. anguilla* for osmoregulation in FW (Ciccoti et al. 1993). Most likely, maintenance of diadromy by temperate eels is selected for because it allows reduction of both inter- and intraspecific competition, two pivotal components of dispersal evolution (Clobert et al. 2001). Indeed, a shift to FW permits temperate eels to escape both strong marine predators (Jonsson and Jonsson 1993), such as conger eels (Moriarty 2003), and high conspecific densities (Tesch 1977). In that sense, social interactions may be considered as major drivers for the evolution of migration in the eel.

However, migration and diadromy incur a strong energetic cost (Roff 1991), that results in increased mortality. Indeed, depletion of energy stores by migration induces exhaustion that could lead to death, either directly or through reduced competitive ability and increased sensitivity to predation and infections (Bernatchez and Dodson 1987; Gandon and Michalakis 2001). In addition, migration probably incurs growth costs as already discussed in Section 18.4.2. Indeed, in the eel, energy requirements of digestion and locomotor activity are conflicting (Owen 2001), and the glass eel's migratory propensity is negatively correlated to juvenile growth performance (Edeline et al. 2005a). Therefore, the evolution of eel diadromy may be driven by a trade-off between search for the most productive habitats and competition

avoidance favouring shift to less productive areas, while costs of dispersal hinder movements. We now provide an ESS model that may explain how eels cope with these conflicting selective pressures.

18.5.2 Evolutionarily Stable Strategy Model

Conditional strategies are ESSs that are commonly invoked to explain the occurrence of alternative phenotypes (i.e., threshold traits) among populations because they allow individuals to cope with physiological- and environment-dependent fitness trade-offs (Hazel et al. 1990; Gross 1996; Roff 1996; Hazel et al. 2004). Conditional strategies depict a special case of phenotypic plasticity in which the reaction norm is not continuous but instead takes a number of discrete values - most often two values - constituting the threshold trait under scrutiny (Schlichting and Pigliucci 1995). Classical examples of conditional strategies include predator - induced protected morphs, trophic polymorphisms or male alternative reproductive behaviours (but see Roff 1996 for review). The alternative phenotypes may be cued by internal (physiological) cues, and/or by external (environmental) cues if they are reliable indicators of environment quality (Hazel et al. 2004). Following Gross (1996), we hereafter term “tactic” the value taken by the phenotype (or decision taken by the individual), and “status” the value of the internal cue triggering the tactic (“status” is not convenient for environmental cues). Tactics change at the status at which fitness benefits switch from favouring one tactic to favouring the alternative: the ESS switch point (Gross 1996).

Edeline (2005, 2007) suggested that glass eel diadromy is a conditional strategy cued by individual energetic status, based on the observation that shift from migration to settlement by glass eels as their body condition decreases has an adaptive significance (Edeline et al. 2006) (see also Section 18.3.2). Edeline (2007) considered it parsimonious to consider a model in which both the switch point and the status (energy stores) of the conditional strategy as polygenic traits influenced by environmental factors. Hence, in an individual, both traits (the switch point and the status) are genetically fixed but they vary with environmental conditions. For instance, energy stores may possibly be influenced by the amount of food encountered during the larval stage (Désaunay and Guerault 1997). Also, the switch point may change with temperature, as indicated by the fact that low water temperature increases preference for SW in *A. anguilla* glass eels (Edeline et al. 2006). At the population level however, variations for the cue and the switch point result from both genetic and environmental variations, resulting in normal distributions for both traits (Hazel et al. 1990; Roff 1996; Hazel et al. 2004) (Fig. 18.5).

In Fig. 18.5, we depict this conditional strategy model in glass eels. Individual glass eels switch from migration to settlement if their energetic status decreases below their switch point. The proportion of migrants in the population is thus determined by the distribution of switch points relative to the distribution of energetic status (Fig. 18.5). In this model THs vs. GH and cortisol are presumably the

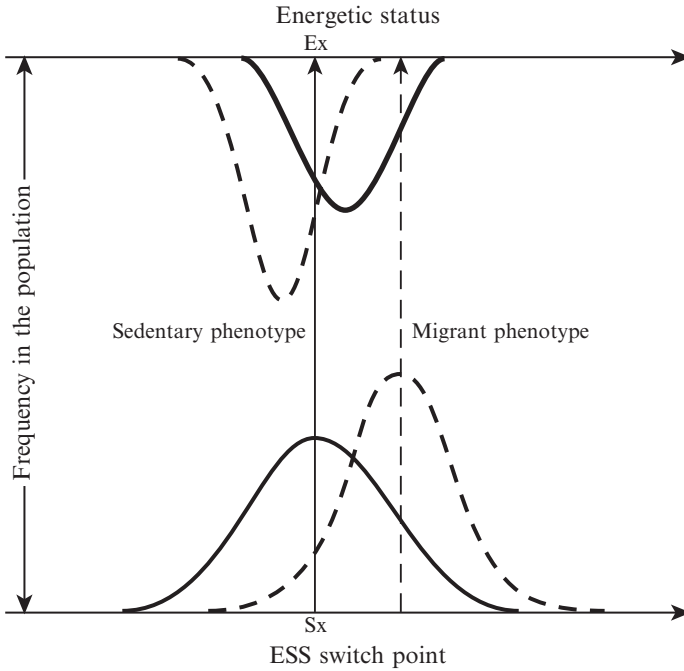


Fig. 18.5 Ultimate control of eel migratory behaviour. Conditional evolutionarily stable strategy (ESS) with alternative migratory tactics depicted as a threshold trait, after Edeline (2007) and adapted from the quantitative genetic models of Hazel et al. (1990, 2004). Consider first the solid curves and arrow. The distribution of the ESS switch points in the population (lower axis) is scaled with exposure to the cueing trait (energetic status, upper axis). An individual x (mean individual with regards to the switch points) will be sedentary if its energetic status E_x is lower than its switch point S_x , and migrant if its energetic status is higher than S_x . The proportion of migrants in the population therefore depends on the distribution of the switch points relative to the distribution of energetic status. For distributions corresponding to solid curves, the majority of the population presents a migratory phenotype (the mean switch point is lower than the mean energetic status). Note that variation for the switch point is larger than variation for energetic status, leading to the existence of unconditional migrants and unconditional sedentary individuals in the population (Hazel et al. 2004). Now, consider the effects of increased selection against migrants due to anthropogenic pressure on FW habitats (see Section 18.4.6). Individuals with a low switch point and/or a high energetic status are counter-selected, resulting in new distributions (dashed curves). This displacement of the curves induces a drop in the proportion of migrants in the population (dashed arrow). We suggest that such evolutionary shift contributes to explain the collapse of eel recruitment into FW during the last decades. Increased selection against migrants strengthens stabilizing selection and thus results in reduced variance in distributions (Futuyma 1998). Note that because the surface below a curve is held constant, reduced variance induces increased peak values

proximate mediators of the alternative tactics, as described in Section 18.3.3. This conditional ESS model, initially designed for glass eel migration, may be adapted to ranging behaviour by yellow eels provided that the cue (internal or environmental) is a reliable proxy for fitness gain from dispersal decisions. For instance, indi-

vidual body size relative to that of the opponent (hierarchical status) is probably a reliable cue for risk of injury during agonistic interactions. Hence, the relationship between fitness of the alternative dispersal phenotypes and status in yellow eels will be the opposite of that found in glass eels: residency will be favoured in (large, high status) dominant eels, while (small, low status) subordinate eels will derive higher fitness from dispersal to lower density habitats. In that case, variation in the switch point for fighting or avoiding confrontation is related to individual “personality” [aggressiveness or boldness for instance (Stamps 2007)]. In other words, not all subordinate eels of the same size will skip confrontation with a given larger opponent. The view that relative body size is a reliable cue for post-settlement dispersal decisions is supported by data showing that the intensity of movements by yellow eels is inversely proportional to their size (Feunteun et al. 2003).

Ecological events may change selective pressures acting on migrants and sedentary individuals and thus generate equilibrium displacements in the distributions of both switch points and status. For instance, in Fig. 18.5, we have depicted the effects of an anthropogenic increase in selection against migrants (see Section 18.4.6). Enhanced mortality, acting selectively on migrants (individuals with a low switch point and/or a high body condition), pushes distributions away from each other and then dramatically reduces the proportion of migrants in the population. Concurrently, global population collapse will decrease densities in SW habitats and thus favour non-migrant individuals (individuals with a high switch point and/or a low body condition), further contributing to separate the two distributions. As underlined in Section 18.4.6, such evolutionary shifts may be rapid. Hence, we suggest that the collapse of FW eel stocks monitored during the last decades (Dekker et al. 2003; Stone 2003) may have anthropogenic sources. This collapse would not only result from decreased population size, but also from a decrease in the proportion of diadromous individuals in the population (Edeline 2007).

18.6 Conclusion and Suggested Future Research Directions

Eel dispersal in different growth habitats influences pivotal life history traits such as growth, sex differentiation, age and size at silvering and finally capacity to reproduce. Therefore, understanding the mechanisms controlling continental dispersal is crucial to eel biology and conservation. The ontogeny of dispersal behaviour reveals that most of the glass eels switch from upstream migration to food-search and density-dependent dispersal during their transformation to yellow eels. However, the timing of settlement is variable and some individuals settle precociously at the glass eel stage while others continue upstream migration at the yellow stage. These different migratory tactics are underlain by genetic variation that allows the evolution of migratory behaviour and induces correlations between migratory behaviour and other life history traits such as salinity preference, locomotor activity and growth. Individual energetic status is a major cue for eel migratory plasticity. The endocrine system, processing both genetic and non-genetic influences, may be considered

as the key mediator of the alternative migratory tactics. A host of environmental parameters may influence migration reaction norms, among which are water currents, temperature, salinity and odours. Post-settlement, eel movements are driven by search for resources and are thus more appropriately termed “ranging”. Ranging is density-dependent and often results from aggressive interactions whose output is size-dependent. During this phase of continental life, variations in demography and resource availability generate a wide array of dispersal patterns. Ultimately, eels have evolved a conditional ESS to regulate dispersal decisions during continental life, i.e. a form of phenotypic plasticity that allows individuals to be either sedentary or dispersing, depending on their environment, and on their physiological and social status. This ESS model suggests that the worldwide collapse of river recruitment during the last decades may result not only from decreased abundance, but also from an adaptive decrease in the proportion of migrants in populations.

There still remain many gaps in our knowledge, as shown by the many speculative or purely theoretical parts of this review. Future works should aim at investigating the genetic basis of the alternative migratory tactics, such as for instance correlations between migratory behaviour and fitness-related genetic markers. More generally, mapping correlations among fitness-related traits could greatly help in dissecting both the proximate and ultimate constraints shaping the eel life history. At the endocrine level, the roles of THs, GH and cortisol in regulating the morphological, physiological and behavioural processes governing dispersal should be explored more deeply. Also, the mechanisms controlling glass eel rhythmic activity are poorly understood, but additional studies could bring fascinating insights about the fine tuning of the glass eel’s coastal and estuarine movements. At the environmental level, our understanding of the social control of dispersal remains limited, and the importance of olfaction in conspecific interactions could be underestimated. Finally, a better evaluation of the anthropogenic impacts on eel life history is critical for better management of the endangered eel populations.

Acknowledgments Dr. F. A. Weltzien (University of Oslo) provided comments on an early version of the manuscript. E. Edeline was supported by research grants from the Cemagref, Région Aquitaine and the French Ministère de l’Ecologie.

References

- Adam G, Elie P (1994) Mise en évidence des déplacements d’anguilles sédentaires (*Anguilla anguilla* L.) en relation avec le cycle lunaire dans le lac de Grand-Lieu (Loire-Atlantique). *Bulletin Français de la Pêche et de la Pisciculture* 335:123–132
- Alerstam T, Hedenström A, Åkesson S (2003) Long-distance migration: evolution and determinants. *Oikos* 103:247–260
- Aoyama J, Nishida M, Tsukamoto K (2001) Molecular phylogeny and evolution of the freshwater eel, genus *Anguilla*. *Molecular Phylogenetics and Evolution* 20:459–459
- Baggerman B (1960) Salinity preference, thyroid activity and the seaward migration of four species of Pacific salmon (*Oncorhynchus*). *Journal of Fisheries Research Board of Canada* 17:295–322

- Baggerman B (1962) Some endocrine aspects of fish migration. *General and Comparative Endocrinology*, Suppl. 1:188–205
- Baisez A (2001) Optimisation des suivis des indices d'abondances et des structures de taille de l'anguille européenne (*Anguilla anguilla*) dans un marais endigué de la côte Atlantique: relation espèce-habitat. Ph.D. thesis, CEMAGREF/University of Toulouse III
- Barbin GP, Parker SJ, McCleave JD (1998) Olfactory cues play a critical role in the estuarine migration of silver-phase American eels. *Environmental Biology of Fishes* 53:283–291
- Bardonnet A, Riera P (2005) Feeding of glass eels (*Anguilla anguilla*) in the course of their estuarine migration: new insights from stable isotope analysis. *Estuarine Coastal and Shelf Science* 63:201–209
- Bardonnet A, Bolliet V, Belon V (2005) Recruitment abundance estimation: role of glass eel (*Anguilla anguilla* L.) response to light. *Journal of Experimental Marine Biology and Ecology* 321:181–190
- Bardonnet A, Dasse S, Parade M, Heland M (2003) Study of glass-eels movements in a flume in relation to nycthemeral changes. *Bulletin Français de la Pêche et de la Pisciculture* 368:9–19
- Beentjes MP, Jellyman DJ (2003) Enhanced growth of longfin eels, *Anguilla dieffenbachii*, transplanted into Lake Hawea, a high country lake in South Island, New Zealand. *New Zealand Journal of Marine and Freshwater Research* 37:1–11
- Bernatchez L, Dodson JJ (1987) Relationship between bioenergetics and behavior in anadromous fish populations. *Canadian Journal of Fisheries and Aquatic Sciences* 44:399–407
- Berthold P (1991) Genetic control of migratory behaviour in birds. *Trends in Ecology and Evolution* 6:254–257
- Berthold P, Pulido F (1994) Heritability of migratory activity in a natural bird population. *Proceedings of the Royal Society B-Biological Sciences* 257:311–315
- Bertin L (1951) *Les anguilles*. Payot, Paris
- Björnsson BT, Taranger GL, Hansen T, Stefansson SO, Haux C (1994) The interrelation between photoperiod, growth hormone, and sexual maturation of adult Atlantic salmon (*Salmo salar*). *General and Comparative Endocrinology* 93:70–81
- Blázquez M, Bosma PT, Fraser EJ, Van Look KJW, Trudeau VL (1998) Fish as models for the neuroendocrine regulation of reproduction and growth. *Comparative Biochemistry and Physiology Part C: Pharmacology, Toxicology and Endocrinology* 119:345–364
- Boeuf G (1993) Salmonid smoltification: a pre-adaptation to the oceanic environment. In: Rankin JC, Jensen FB (eds) *Fish Ecophysiology*. Chapman & Hall, London, pp 105–135
- Boeuf G, Le Bail PY (1999) Does light have an influence on fish growth? *Aquaculture* 177:129–152
- Boeuf G, Payan P (2001) How should salinity influence fish growth? *Comparative Biochemistry and Physiology Part C: Toxicology & Pharmacology* 130:411–423
- Bolliet V, Ali MA, Lapointe FJ, Falcon J (1996) Rhythmic melatonin secretion in different teleost species: an *in vitro* study. *Journal of Comparative Physiology B: Biochemical Systemic and Environmental Physiology* 165:677–683
- Boucher-Firly S (1935) Recherches biochimiques sur les Téléostéens Apodes (Anguille, Congre, Murène). *Annales de l'Institut Océanographique* 15:220–327
- Briand C, Fatin D, Legault A (2002) Role of eel odour on the efficiency of an eel, *Anguilla anguilla*, ladder and trap. *Environmental Biology of Fishes* 65:473–477
- Briand C, Fatin D, Fontenelle G, Feunteun E (2003) Estuarine and fluvial recruitment of the European glass eel, *Anguilla anguilla*, in an exploited Atlantic estuary. *Fisheries Management and Ecology* 10:377–384
- Briand C, Fatin D, Fontenelle G, Feunteun E (2005a) Effect of re-opening of a migratory pathway for eel (*Anguilla anguilla*, L.) at a watershed scale. *Bulletin Français de la Pêche et de la Pisciculture* 378–379:67–86
- Briand C, Fatin D, Ciccoli E, Lambert P (2005b) A stage-structured model to predict the effect of temperature and salinity on glass eel *Anguilla anguilla* pigmentation development. *Journal of Fish Biology* 67:993–1009

- Bureau du Colombier S, Bolliet V, Lambert P, Bardonnnet A (2007) Energy and migratory behavior in glass eels (*Anguilla anguilla*). *Physiology and Behavior*, 92:684–690
- Butler DG, Carmichael FJ (1972) (Na⁺/K⁺)-ATPase activity in eel (*Anguilla rostrata*) gills in relation to changes in environmental salinity: role of adrenocortical steroids. *General and Comparative Endocrinology* 19:421–427
- Callamand O, Fontaine M (1942) L'activité thyroïdienne de l'anguille au cours de son développement. *Archives de Zoologie Expérimentale et Générale* 82:129–136
- Castonguay M, Dutil JD, Audet C, Miller R (1990) Locomotor activity and concentration of thyroid hormones in migratory and sedentary juvenile American eels. *Transactions of the American Fisheries Society* 119:946–956
- Charlon N, Blanc JM (1982) Etude des civelles d'*Anguilla anguilla* L. dans la région du bassin de l'Adour. 1. Caractéristiques biométriques de longueur et de poids en fonction de la pigmentation. *Archiv fuer Hydrobiologie* 93:238–255
- Chen YL, Chen HY (1991) Temperature selections of *Anguilla japonica* (L.) elvers, and their implications for migration. *Australian Journal of Marine and Freshwater Research* 42:743–750
- Ciccoti E, Macchi E, Rossi A, Cataldi E, Cataudella S (1993) Glass eel (*Anguilla anguilla*) acclimation to freshwater and seawater: morphological changes of the digestive tract. *Journal of Applied Ichthyology* 9:74–81
- Clobert J, Danchin E, Dhondt AA, Nichols JD (eds) (2001) *Dispersal*. Oxford University Press, Oxford
- Creutzberg F (1958) Use of tidal streams by migrating elvers (*Anguilla vulgaris* Turt.). *Nature* 181:357–358
- Creutzberg F (1959) Discrimination between ebb and flood tide in migrating elvers (*Anguilla vulgaris* Turt.) by means of olfactory perception. *Nature* 184:1961–1962
- Creutzberg F (1961) On the orientation of migrating elvers (*Anguilla vulgaris* Turt.) in a tidal area. *Netherlands Journal of Sea Research* 1:257–338
- Daemen E, Cross T, Ollevier F, Volckaert FA (2001) Analysis of the genetic structure of the European eel (*Anguilla anguilla*) using microsatellites DNA and mtDNA markers. *Marine Biology* 139:755–764
- Dannewitz J, Maes GE, Johansson L, Wickström H, Volckaert FA, Järvi T (2005) Panmixia in the European eel: a matter of time. *Proceedings of the Royal Society B-Biological Sciences* 272:1129–1137
- Daverat F, Tomás J (2006) Tactics and demographic attributes in the European eel *Anguilla anguilla* in the Gironde watershed, SW France. *Marine Ecology Progress Series* 307:247–257
- Daverat F, Limburg KE, Thibault I, Shiao JC, Dodson JJ, Caron F, Tzeng WN, Lizuka Y, Wickström H (2006) Phenotypic plasticity of habitat use by three temperate eel species, *Anguilla anguilla*, *A. japonica* and *A. rostrata*. *Marine Ecology Progress Series* 308:231–241
- Davey AJH, Jellyman DJ (2005) Sex determination in freshwater eels and management options for manipulation of sex. *Reviews in Fish Biology and Fisheries* 15:37–52
- De Casamajor MN, Bru N, Prouzet P (2000) Fluctuation des captures de civelles (*Anguilla anguilla* L.) et analyse de la variation de leur capturabilité dans l'estuaire de l'Adour. *Bulletin Français de la Pêche et de la Pisciculture* 357–358:387–404
- Deelder CL (1958) On the behaviour of elvers (*Anguilla vulgaris* Turt.) migrating from the sea into freshwater. *Journal du Conseil International pour l'Exploration de la Mer* 24:135–146
- Degani G, Levanon D (1983) The influence of low density on food adaptation, cannibalism and growth of eels (*Anguilla anguilla* L.). *Bamidgeh* 35:53–60
- Degani G, Levanon D, Meltzer A (1988) Influence of high loading density on growth and survival of European glass eels. *Progressive Fish Culturist* 50:178–181
- Dekker W, Casselman JM, Cairns DK, Tsukamoto K, Jellyman D, Lickers H (2003) Worldwide decline of eel resources necessitates immediate action. *Fisheries* 28:28–30
- Désaunay Y, Guerault D (1997) Seasonal and long term changes in biometrics of eel larvae: a possible relationship between recruitment and North Atlantic ecosystem productivity. *Journal of Fish Biology* 51 Suppl. A:317–339

- Dingle H (2006) Animal migration: is there a common migratory syndrome? *Journal of Ornithology* 147:212–220
- Dou SZ, Tsukamoto K (2003) Observations on the nocturnal activity and feeding behavior of *Anguilla japonica* glass eels under laboratory conditions. *Environmental Biology of Fishes* 67:389–395
- Døving KB, Stabell OB (2002) Trails in open waters: sensory cues in salmon migration. In: Collin SP, Marshall NJ (eds) *Sensory Processing in Aquatic Environments*. Springer, New York, pp 39–52
- Dufour S, Rousseau K, Sbaihi M, Le Belle N, Vidal B, Marchelidon J, Schmitz M (2001) Multiple neuroendocrine regulation of growth hormone in the European eel *Anguilla anguilla*. *Journal of Taiwan Fisheries Research* 9:77–92
- Dufty AM, Belthoff JR (2001) Proximate mechanisms of natal dispersal: the role of body condition and hormones. In: Clobert J, Danchin E, Dhondt AA, Nichols JD (eds) *Dispersal*. Oxford University Press, Oxford, pp 217–229
- Dutil JD, Michaud M, Giroux A (1989) Seasonal and diel patterns of stream invasion by American eels (*Anguilla rostrata*) in the Northern Gulf of St. Lawrence. *Canadian Journal of Zoology* 67:182–188
- Eales JG (1988) The influence of nutritional state on thyroid function in various vertebrates. *American Zoologist* 28:351–362
- Edel RK (1976) Activity rhythms of maturing American eels (*Anguilla rostrata*). *Marine Biology* 36:283–289
- Edeline E (2005) Facteurs du contrôle de la dispersion continentale chez l'anguille. Ph.D. thesis, CEMAGREF/University of Toulouse III
- Edeline E (2007) Adaptive phenotypic plasticity of eel diadromy. *Marine Ecology Progress Series* 341:229–232
- Edeline E, Dufour S, Elie P (2005a) Role of glass eel salinity preference in the control of habitat selection and growth plasticity in *Anguilla anguilla*. *Marine Ecology Progress Series* 304:191–199
- Edeline E, Lambert P, Rigaud C, Elie P (2006) Effects of body condition and water temperature on *Anguilla anguilla* glass eels migratory behavior. *Journal of Experimental Marine Biology and Ecology* 331:217–225
- Edeline E, Beaulaton L, Le Barh R, Elie P (2007) Dispersal in metamorphosing *Anguilla anguilla* juvenile eel. *Marine Ecology Progress Series* 344:213–218
- Edeline E, Dufour S, Briand C, Fatin D, Elie P (2004) Thyroid status is related to migratory behavior in *Anguilla anguilla* glass eels. *Marine Ecology Progress Series* 282:261–270
- Edeline E, Bardonnnet A, Bolliet V, Dufour S, Elie P (2005b) Endocrine control of *Anguilla anguilla* glass eel dispersal: effect of thyroid hormones on locomotor activity and rheotactic behavior. *Hormones and Behavior* 48:53–63
- Einum S, Kinnison MT, Hendry AP (2004) Evolution of egg size and number. In: Hendry AP, Stearns SC (eds) *Evolution Illuminated*. Oxford University Press, New York, p 510
- Elie P (1979) Contribution à l'étude des montées de civelles d'*Anguilla anguilla* Linné (Poisson, Téléostéen, Anguilliforme), dans l'estuaire de la Loire: pêche, écologie, écophysiologie et élevage. Ph.D. thesis, University of Rennes I
- Elie P, Daguzan J (1976) Alimentation et croissance des civelles d'*Anguilla anguilla* L. (Poisson Téléostéen Anguilliforme) élevées expérimentalement, à diverses températures, au laboratoire. *Annales de la Nutrition et de l'Alimentation* 30:95–114
- Elie P, Rochard E (1994) Migration des civelles d'anguille dans les estuaires, modalités du phénomène et caractéristiques des individus. *Bulletin Français de la Pêche et de la Pisciculture* 335:81–98
- Elie P, Lecomte-Finiger R, Cantrelle I, Charlon N (1982) Définition des limites des différents stades pigmentaires durant la phase civelle d'*Anguilla anguilla* L. (poisson téléostéen anguilliforme). *Vie et Milieu* 32:149–157
- Epstein FH, Cynamon M, McKay W (1971) Endocrine control of Na-K-ATPase and seawater adaptation in *Anguilla rostrata*. *General and Comparative Endocrinology* 16:323–328

- Falcon J, Besseau L, Fazzari D, Attia J, Gaildrat P, Beauchaud M, Boeuf G (2003) Melatonin modulates secretion of growth hormone and prolactin by trout pituitary glands and cells in culture. *Endocrinology* 144:4648–4658
- Feunteun E (2002) Management and restoration of European eel population (*Anguilla anguilla*): an impossible bargain. *Ecological Engineering* 18:575–591
- Feunteun E, Laffaille P, Robinet T, Briand C, Baisez A, Olivier JM, Acou A (2003) A review of upstream migration and movements in inland waters by anguillid eels. Towards a general theory. In: Aida K, Tsukamoto K, Yamauchi K (eds) *Eel Biology*. Springer, Tokyo, pp 191–213
- Fontaine M (1975) Physiological mechanisms in the migration of marine and amphihaline fish. *Advances in Marine Biology* 13:241–355
- Fontaine M, Raffy A (1932) Recherches physiologiques et biologiques sur les civelles. *Bulletin de l'Institut Océanographique* 603:1–18
- Forseth T, Naesje TF, Jonsson B, Harsaker K (1999) Juvenile migration in brown trout: a consequence of energetic state. *Journal of Animal Ecology* 68:783–793
- Futuyma DJ (1998) *Evolutionary biology*. Sinauer, Sunderland, Massachusetts
- Gandon S, Michalakis Y (2001) Multiple causes of the evolution of dispersal. In: Clobert J, Danchin E, Dhondt AA, Nichols JD (eds) *Dispersal*. Oxford University Press, Oxford, pp 155–167
- Gross MR (1996) Alternative reproductive strategies and tactics: diversity within sexes. *Trends in Ecology and Evolution* 11:92–98
- Gross MR, Coleman RM, McDowall RM (1988) Aquatic productivity and the evolution of diadromous fish migration. *Science* 139:1291–1293
- Halpern BP (1982) Environmental factors affecting chemoreceptors: an overview. *Environmental Health Perspectives* 44:101–105
- Harden-Jones FR (1984) A view from the ocean. In: McCleave JD, Arnold GP, Dodson JJ, Neill WH (eds) *Mechanisms of Migration in Fishes*. Plenum, New York, pp 1–26
- Haro A, Krueger WH (1988) Pigmentation, size, and migration of elvers (*Anguilla rostrata* (Lesueur)) in a coastal Rhode Island stream. *Canadian Journal of Zoology* 66:2528–2533
- Hastings JW, Rusak B, Boulous Z (1991) Circadian rhythms: the physiology of biological timing. In: Prosser CL (ed) *Neural and Integrative Animal Physiology*. Wiley-Liss, New York, pp 435–546
- Hazel W, Smock R, Lively CM (2004) The ecological genetics of conditional strategies. *American Naturalist* 163:888–900
- Hazel WN, Smock R, Johnson MD (1990) A polygenic model for the evolution and maintenance of conditional strategies. *Proceedings of the Royal Society B-Biological Sciences* 242:181–187
- Higgs DA, Fagerlund UHM, Eales JG, McBride JR (1982) Application of thyroid and steroid hormones as anabolic agents in fish culture. *Comparative Biochemistry and Physiology Part B: Biochemistry and Molecular Biology* 73:143–176
- Hoar WS (1988) The physiology of smolting salmonids. In: Hoar WS, Randall DJ (eds) *Fish Physiology*. Academic, London, pp 275–343
- Holmgren K, Mosegaard H (1996) Implications of individual growth status on the future sex of the European eel. *Journal of Fish Biology* 49:910–925
- Holmgren K, Wickström H, Clevestam P (1997) Sex-related growth of European eel, *Anguilla anguilla*, with focus on median silver eel age. *Canadian Journal of Fisheries and Aquatic Sciences* 54:2775–2781
- Ibbotson A, Smith J, Scarlett P, Aprahamian MW (2002) Colonisation of freshwater habitats by the European eel *Anguilla anguilla*. *Freshwater Biology* 47:1696–1706
- Iwata M (1995) Downstream migratory behavior of salmonids and its relationship with cortisol and thyroid hormones: A review. *Aquaculture* 135:131–139
- Jegstrup IM, Rosenkilde P (2003) Regulation of post-larval development in the European eel: thyroid hormone level, progress of pigmentation and changes in behaviour. *Journal of Fish Biology* 63:168–175

- Jellyman DJ, Lambert PW (2003) Factors affecting recruitment of glass eels into the Grey River, New Zealand. *Journal of Fish Biology* 63:1067–1079
- Jessop BM (1998) Geographic and seasonal variation in biological characteristics of American eel elvers in the Bay of Fundy area and on the Atlantic coast of Nova Scotia. *Canadian Journal of Zoology* 76:2172–2185
- Jessop BM (2003) Annual variability in the effects of water temperature, discharge, and tidal stage on migration of American eel elvers from estuary to river. *American Fisheries Society Symposium* 33:3–16
- Jessop BM, Shiao JC, Lizuka Y, Tzeng CS (2004) Variation in the annual growth, by sex and migration history, of silver American eels *Anguilla rostrata*. *Marine Ecology Progress Series* 272:231–244
- Johansson V, Winberg S, Jönsson E, Hall D, Björnsson BT (2004) Peripherally administered growth hormone increases brain dopaminergic activity and swimming in rainbow trout. *Hormones and Behavior* 46:436–443
- Johnston IA, Temple GK (2002) Thermal plasticity of skeletal muscle phenotype in ectothermic vertebrates and its significance for locomotory behaviour. *Journal of Experimental Biology* 205:2305–2322
- Jonsson B, Jonsson N (1993) Partial migration: niche shift versus sexual maturation in fishes. *Reviews in Fish Biology and Fisheries* 3:348–365
- Jonsson N, Jonsson B, Hansen LP (1997) Changes in proximate composition and estimates of energetic costs during upstream migration and spawning in Atlantic salmon *Salmo salar*. *Journal of Animal Ecology* 66:425–436
- Jung S, Houde ED (2003) Spatial and temporal variabilities of pelagic fish community structure and distribution in Chesapeake Bay, USA. *Estuarine Coastal and Shelf Science* 58:335–351
- Katzman S, Cech JJ (2001) Juvenile coho salmon locomotion and mosaic muscle are modified by 3',3',5'-tri-iodo-L-thyronine (T(3)). *Journal of Experimental Biology* 204:1711–1717
- Kawakami Y, Mochioka N, Kimura R, Nakazono A (1999) Seasonal changes of the RNA/DNA ratio, size and lipid contents and immigration adaptability of Japanese glass eels, *Anguilla japonica*, collected in northern Kyushu, Japan. *Journal of Experimental Marine Biology and Ecology* 238:1–19
- Kim WS, Yoon SJ, Moon HT, Lee TW (2002) Effects of water temperature changes on the endogenous and exogenous rhythms of oxygen consumption in glass eels *Anguilla japonica*. *Marine Ecology Progress Series* 243:209–216
- Knights B (1987) Agonistic behaviour and growth in the European eel, *Anguilla anguilla* L., in relation to warm-water aquaculture. *Journal of Fish Biology* 31:265–276
- Knights B (2003) A review of the possible impacts of long term oceanic and climate changes and fishing mortality on recruitment of anguillid eels of the northern Hemisphere. *Science of the Total Environment* 310:237–244
- Lafaille P, Acou A, Guillouët J, Legault A (2005) Temporal changes in European eel, *Anguilla anguilla*, stocks in a small catchment after installation of fish passes. *Fisheries Management and Ecology* 12:123–129
- Lambert P, Sbaihi M, Rochard E, Marchelidon J, Dufour S, Elie P (2003) Morphological and growth hormone variabilities of European glass eel (*Anguilla anguilla*) in Gironde estuary during 1997–1998 season. *Bulletin Français de la Pêche et de la Pisciculture* 368:69–83
- Law R (2000) Fishing, selection, and phenotypic evolution. *ICES Journal of Marine Sciences* 57:659–668
- Le Bras YM (1978) Circadian rhythm in brain catecholamine concentrations in the teleost: *Anguilla anguilla*. *Comparative Biochemistry and Physiology Part C: Pharmacology, Toxicology and Endocrinology* 62:115–117
- Le Bras YM (1984) Circadian variations of catecholamine levels in brain, heart, and plasma in the eel, *Anguilla anguilla* L., at three different times of year. *General and Comparative Endocrinology* 55:472–479
- Leiner KA, McKenzie DS (2001) The effects of photoperiod on growth rate and circulating thyroid hormone levels in the red drum, *Sciaenops ocellatus*: evidence for a free running cir-

- cadian rhythm of T_4 secretion. *Comparative Biochemistry and Physiology Part A: Molecular & Integrative Physiology* 130:141–149
- Leloup J (1958) Influence de la température sur le fonctionnement thyroïdien de l'anguille normale. *Comptes Rendus des Séances de l'Académie des Sciences* 247:2454–2456
- Leloup J, De Luze A (1985) Environmental effects of temperature and salinity on thyroid function in Teleost fishes. In: Follet BK, Ishii S, Chandola A (eds) *The Endocrine System and the Environment*. Springer, Berlin, pp 23–32
- Lema SC, Nevitt GA (2004) Evidence that thyroid hormone induces olfactory cellular proliferation in salmon during a sensitive period for imprinting. *Journal of Experimental Biology* 207:3317–3327
- Maes GE, Volckaert FA (2002) Clinal genetic variation and isolation by distance in the European eel *Anguilla anguilla* (L.). *Biological Journal of the Linnean Society* 77:509–521
- Maes GE, Raeymaekers JAM, Pampoulie C, Seynaeve A, Goemans G, Belpaire C, Volckaert FA (2005) The catadromous European eel *Anguilla anguilla* (L.) as a model for freshwater evolutionary ecotoxicology: relationship between heavy metal bioaccumulation, condition and genetic variability. *Aquatic Toxicology* 73:99–114
- Marchelidon J, Schmitz M, Houdebine LM, Vidal B, Le Belle N, Dufour S (1996) Development of a radioimmunoassay for European eel growth hormone and application to the study of silvering and experimental fasting. *General and Comparative Endocrinology* 102:360–369
- McCleave JD, Kleckner RC (1982) Selective tidal stream transport in the estuarine migration of glass eels of the American eel (*Anguilla rostrata*). *Journal du Conseil International pour l'Exploration de la Mer* 40:262–271
- McCleave JD, Wippelhauser GS (1987) Behavioural aspects of selective tidal stream transport in juvenile American eels. *American Fisheries Society Symposium* 1:138–150
- McCormick SD (2001) Endocrine control of osmoregulation in teleost fish. *American Zoologist* 41:781–794
- McGovern P, McCarthy TK (1992) Elver migration in the River Corrib system, western Ireland. *Irish Fisheries Investigations Series A (Freshwater)* 36:25–32
- Michaud M, Dutil JD, Dodson JJ (1988) Determination of the age of young American eels, *Anguilla rostrata*, in freshwater, based on otolith surface area and microstructure. *Journal of Fish Biology* 32:179–189
- Moran NA (1994) Adaptation and constraint in the complex life cycles of animals. *Annual Review of Ecology and Systematics* 25:573–600
- Moriarty C (1986) Riverine migrations of young eels *Anguilla anguilla* (L.). *Fisheries Research* 4:43–58
- Moriarty C (2003) The yellow eel. In: Aida K, Tsukamoto K, Yamauchi K (eds) *Eel Biology*. Springer, Tokyo, pp 89–105
- Naismith IA, Knights B (1988) Migrations of elvers and juvenile European eels, *Anguilla anguilla* L., in the River Thames. *Journal of Fish Biology* 33:161–177
- Nelson JS (1994) *Fishes of the World*. Wiley, New York
- Otake T (2003) Metamorphosis. In: Aida K, Tsukamoto K, Yamauchi K (eds) *Eel Biology*. Springer, Tokyo, pp 61–74
- Øverli Ø, Kotzian S, Winberg S (2002) Effects of cortisol on aggression and locomotor activity in rainbow trout. *Hormones and Behavior* 42:53–61
- Owen SF (2001) Meeting energy budgets by modulation of behaviour and physiology in the eel (*Anguilla anguilla* L.). *Comparative Biochemistry and Physiology Part A: Molecular & Integrative Physiology* 128:629–642
- Ozaki Y, Okamura H, Kazeto Y, Ikeuchi T, Ijiri S, Nagae M, Adachi S, Yamauchi K (2000) Developmental changes in pituitary thyroid axis, and formation of gonads in leptocephali and glass eels of *Anguilla* spp. *Fisheries Science* 66:1115–1122
- Peters G, Delventhal H, Klinger H (1980) Physiological and morphological effects of social stress in the eel, (*Anguilla anguilla* L.). *Archiv fuer Fischereiwissenschaft* 30:157–180
- Petit G, Vilter V (1944) Stabulation des civelles à l'embouchure d'un fleuve du golfe de Marseille. *Comptes Rendus des Séances de la Société de Biologie et de ses Filiales* 138:632–634

- Pujolar JM, Maes GE, Vancoillie C, Volckaert FA (2005) Growth rate correlates to individual heterozygosity in the European eel, *Anguilla anguilla* L. *Evolution* 59:189–199
- Pulido F, Berthold P, van Noordwijk AJ (1996) Frequency of migrants and migratory activity are genetically correlated in a bird population: evolutionary implications. *Proceedings of the National Academy of Sciences of the USA* 93:14642–14647
- Redding JM, deLuze A, Leloup-Hâtey J, Leloup J (1986) Suppression of plasma thyroid hormone concentrations by cortisol in the European eel *Anguilla anguilla*. *Comparative Biochemistry and Physiology Part A: Physiology* 83:409–413
- Rensing L, Ruoff P (2002) Temperature effect on entrainment, phase shifting, and amplitude of circadian clocks and its molecular bases. *Chronobiology International* 19:807–864
- Richardson J, Boubée JAT, West DW (1994) Thermal tolerance and preference of some native New Zealand freshwater fish. *New Zealand Journal of Marine and Freshwater Research* 28:399–407
- Robinet T, Feunteun E (2002) Sublethal effects of exposure to chemical compounds: a cause for the decline in Atlantic eels? *Ecotoxicology* 11:265–277
- Roff DA (1991) Life history consequences of bioenergetic and biomechanical constraints on migration. *American Zoologist* 31:205–216
- Roff DA (1996) The evolution of threshold traits in animals. *Quarterly Review of Biology* 71:3–35
- Roff DA, Fairbairn DJ (2001) The genetic basis of dispersal and migration, and its consequences for the evolution of correlated traits. In: Clobert J, Danchin E, Dhondt AA, Nichols JD (eds) *Dispersal*. Oxford University Press, Oxford, pp 191–202
- Rousseau K, Le Belle N, Marchelidon J, Dufour S (1999) Evidence that corticotropin releasing hormone acts as a growth hormone releasing factor in a primitive teleost, the European eel (*Anguilla anguilla*). *Journal of Neuroendocrinology* 11:385–392
- Rousseau K, Le Belle N, Sbahi M, Marchelidon J, Schmitz M, Dufour S (2002) Evidence for a negative feedback in the control of eel growth hormone by thyroid hormones. *Journal of Endocrinology* 175:605–613
- Saglio P (1982) Piégeage d'anguilles (*Anguilla anguilla* L.) dans le milieu naturel au moyen d'extraits biologiques d'origine intraspécifique. Mise en évidence de l'activité phéromonale du mucus épidermique. *Acta Oecologica* 3:223–231
- Schlichting CD, Pigliucci M (1995) Gene regulation, quantitative genetics and the evolution of reaction norms. *Evolutionary Ecology* 9:154–168
- Schmidt J (1909) Remarks on the metamorphosis and distribution of the larvae of the eel. *Meddelelser fra Kommissionen for Havundersøgelser Serie: Fiskeri* 3:1–17
- Scott GR, Sloman KA (2004) The effects of environmental pollutants on complex fish behaviour: integrating behavioural and physiological indicators of toxicity. *Aquatic Toxicology* 68:369–392
- Shikano T, Chiyokubo T, Nakadate M, Fujio Y (2000) The relationship between allozyme heterozygosity and salinity tolerance in wild and domestic populations of the guppy (*Poecilia reticulata*). *Aquaculture* 184:233–245
- Sloane RD (1984) Upstream migration by young pigmented freshwater eels (*Anguilla australis* Richardson) in Tasmania. *Australian Journal of Marine and Freshwater Research* 35:61–73
- Smogor RA, Angermeier PL, Gaylord CK (1995) Distribution and abundance of American eels in Virginia streams: test of null models across spatial scales. *Transactions of the American Fisheries Society* 124:789–803
- Sola C (1995) Chemoattraction of upstream migrating glass eels *Anguilla anguilla* to earthy and green odorants. *Environmental Biology of Fishes* 43:179–185
- Sola C, Tosi L (1993) Bile salts and taurine as chemical stimuli for glass eels, *Anguilla anguilla*: a behavioural study. *Environmental Biology of Fishes* 37:197–204
- Sola C, Tongiorgi P (1996) The effects of salinity on the chemotaxis of glass eels, *Anguilla anguilla*, to organic earthy and green odorants. *Environmental Biology of Fishes* 47:213–218
- Sola C, Tongiorgi P (1998) Behavioural responses of glass eels of *Anguilla anguilla* to non-protein amino acids. *Journal of Fish Biology* 53:1253–1262

- Sola C, Spampinato A, Tosi L (1993) Behavioural responses of glass eels (*Anguilla anguilla*) toward amino acids. *Journal of Fish Biology* 42:683–691
- Sorensen PW (1986) Origins of the freshwater attractant(s) of migrating elvers of the American eel, *Anguilla rostrata*. *Environmental Biology of Fishes* 17:185–200
- Specker JL, Eales JG, Tagawa M, Tyler III WA (2000) Parr smolt transformation in Atlantic salmon: thyroid deiodination in liver and brain and endocrine correlates of change in rheotactic behavior. *Canadian Journal of Zoology* 78:696–705
- Stamps JA (2007) Growth mortality tradeoffs and ‘personality traits’ in animals. *Ecology Letters* 10:355–363
- Stockwell CA, Hendry AP, Kinnison MT (2003) Contemporary evolution meets conservation biology. *Trends in Ecology and Evolution* 18:94–101
- Stone R (2003) Freshwater eels are slip sliding away. *Science* 302:221–222
- Sutherland WJ, Gill JA, Norris K (2002) Density dependent dispersal in animals: concepts, evidence, mechanisms and consequences. In: Bollock JM, Kenward RE, Hails RS (eds) *Dispersal Ecology*. Blackwell, Oxford, pp 134–151
- Tesch FW (1977) *The Eel*. Chapman & Hall, London
- Tomoda H, Uematsu K (1996) Morphogenesis of the brain in larval and juvenile Japanese eels, *Anguilla japonica*. *Brain Behavior and Evolution* 47:33–41
- Tosi L, Sola C (1993) Role of geosmin, a typical inland water odour, in guiding glass eel *Anguilla anguilla* (L.) migration. *Ethology* 95:177–195
- Tosi L, Sola C, Spampinato A, Tongiorgi P (1989) The behaviour of glass eel of *Anguilla anguilla* toward salinity: discrimination and preferences. *Rivista Italiana di Acquacoltura* 24:219–223
- Tosi L, Spampinato A, Sola C, Tongiorgi P (1990) Relation of water odour, salinity and temperature to ascent of glass eels, *Anguilla anguilla* (L.): a laboratory study. *Journal of Fish Biology* 36:327–340
- Tosi L, Sala L, Sola C, Spampinato A, Tongiorgi P (1988) Experimental analysis of the thermal and salinity preferences of glass eels, *Anguilla anguilla* (L.), before and during the upstream migration. *Journal of Fish Biology* 33:721–733
- Tsukamoto K, Arai T (2001) Facultative catadromy of the eel *Anguilla japonica* between freshwater and seawater habitats. *Marine Ecology Progress Series* 220:265–276
- Tsukamoto K, Aoyama J, Miller JM (2002) Migration, speciation, and the evolution of diadromy in anguillid eels. *Canadian Journal of Fisheries and Aquatic Sciences* 59:1989–1998
- Tzeng WN, Lizuka Y, Shiao JC, Yamada Y, Oka HP (2003) Identification and growth rates comparison of divergent migratory contingents of Japanese eel (*Anguilla japonica*). *Aquaculture* 216:77–86
- Vilter V (1945) Développement du tractus gastro intestinal au cours de la métamorphose de larves d’anguille (civelles). *Comptes Rendus des Séances de la Société de Biologie et de ses Filiales* 139:223–224
- Vilter V (1946) Action de la thyroxine sur la métamorphose larvaire de l’anguille. *Comptes Rendus des Séances de la Société de Biologie et de ses Filiales* 140:783–785
- Vøllestad LA, Jonsson B (1988) A 13-year study of the population dynamics and growth of the European eel *Anguilla anguilla* in a Norwegian river: evidence for density-dependent mortality, and development of a model for predicting yield. *Journal of Animal Ecology* 57:983–997
- Weihls D (1978) Tidal stream transport as an efficient method for migration. *Journal du Conseil International pour l’Exploration de la Mer* 38:92–99
- White E, Knights B (1997a) Dynamics of upstream migration of the European eel, *Anguilla anguilla* (L.), in the Rivers Severn and Avon, England, with special reference to the effects of man made barriers. *Fisheries Management and Ecology* 4:311–324
- White EM, Knights B (1997b) Environmental factors affecting the migration of the European eel in the Rivers Severn and Avon, England. *Journal of Fish Biology* 50:1104–1116
- Wilson JM, Antunes JC, Buça PD, Coimbra J (2004) Osmoregulatory plasticity of the glass eel of *Anguilla anguilla*: freshwater entry and changes in branchial ion-transport protein expression. *Canadian Journal of Fisheries and Aquatic Sciences* 61:432–442

- Wipfelhauser GS, McCleave JD (1988) Rhythmic activity of migrating juvenile American eels *Anguilla rostrata*. *Journal of the Marine Biological Association of the United Kingdom* 68:81–91
- Wirth T, Bernatchez L (2001) Genetic evidence against panmixia in the European eel. *Nature* 409:1037–1040
- Yamano K, Tagawa M, De Jesus EG, Hirano T, Miwa S, Inui Y (1991) Changes in whole body concentrations of thyroid hormones and cortisol in metamorphosing conger eel. *Journal of Comparative Physiology, B: Biochemical, Systematic and Environmental Physiology* 161:371–375
- Zera AJ, Harshman LG (2001) The physiology of life history trade offs in animals. *Annual Review of Ecology and Systematics* 32:95–126