

## Chapter 5

### Simple bioreactors for mass propagation of plants

Meira Ziv

*Department of Agricultural Botany, The Hebrew University of Jerusalem, P.O. Box 12, Rehovot 76100, ISRAEL.*

*Tel.: +972-8-9489915; Fax:+972-8-9467763; E-mail: meira@agri.huji.ac.il*

**Abstract:** Bioreactors provide a rapid and efficient plant propagation system for many agricultural and forestry species, utilizing liquid media to avoid intensive manual handling. Large-scale liquid cultures have been used for micropropagation through organogenesis or somatic embryogenesis pathways. Various types of bioreactors with gas-sparged mixing are suitable for the production of clusters of buds, meristems or protocorms. A simple glass bubble-column bioreactor for the proliferation of ornamental and vegetable crop species resulted in biomass increase of 3 to 6-fold in 3-4 weeks. An internal loop bioreactor was used for asparagus, celery and cucumber embryogenic cultures. However, as the biomass increased, the mixing and circulation were not optimal and growth was reduced. A disposable pre-sterilized plastic bioreactor (2 to 5-litre volume) was used for the proliferation of meristematic clusters of several ornamental, vegetable and woody plant species. The plastic bioreactor induced minimal shearing and foaming, resulting in an increase in biomass as compared to the glass bubble-column bioreactor.

A major issue related to the use of liquid media in bioreactors is hyperhydricity, that is, morphogenic malformation. Liquid cultures impose stress signals that are expressed in developmental aberrations. Submerged tissues exhibit oxidative stress, with elevated concentrations of reactive oxygen species associated with a change in anti-oxidant enzyme activity. These changes affect the anatomy and physiology of the plants and their survival. Malformation was controlled by adding growth retardants to decrease rapid proliferation. Growth retardants ancymidol or paclobutrazol reduced water uptake during cell proliferation, decreased vacuolation and intercellular spaces, shortened the stems and inhibited leaf expansion, inducing the formation of clusters. Using a two-stage bioreactor process, the medium was changed in the second stage to a medium lacking growth retardants to induce development of the meristematic clusters into buds or somatic embryos. Cluster biomass increased 10 to 15-fold during a period of 25-30 days depending on the species. Potato bud clusters cultured in 1.5 litres of medium in a 2-litre capacity bioreactor, increased during 10-30 days. Poplar *in vitro* roots regenerated buds in the presence of thidiazuron (TDZ); the biomass increased 12-fold in 30 days. Bioreactor-regenerated clusters were separated with a manual cutter, producing small propagule units that formed shoots and initiated roots. Clusters of buds or meristematic nodules with reduced shoots, as well as arrested leaf growth, had less distortion and were optimal for automated cutting and dispensing. In tuber-, bulb-

and corm-producing plants, growth retardants and elevated sucrose concentrations in the media were found to enhance storage organ formation, providing a better propagule for transplanting or storage.

Bioreactor-cultures have several advantages compared with agar-based cultures, with a better control of the contact of the plant tissue with the culture medium, and optimal nutrient and growth regulator supply, as well as aeration and medium circulation, the filtration of the medium and the scaling-up of the cultures. Micropropagation in bioreactors for optimal plant production will depend on a better understanding of plant responses to signals from the microenvironment and on specific culture manipulation to control the morphogenesis of plants in liquid cultures.

*Key words:* airlift bioreactors, clusters, growth retardants, hyperhydricity, oxidative-stress

Abbreviations: ANC - ancymidol; APX - ascorbate peroxidase; BA - benzyl aminopurine; CAT - catalase; DW - dry weight; FW - fresh weight; 2iP-2 - isopentenyladenine; PAC - paclobutrazol; ROS - reactive oxygen species; TDZ - thidiazuron

## 1. Introduction

Micropropagation is currently applied to a large number of agricultural and forestry species, but is still costly due to intensive manual manipulation throughout the various culture phases. Automation and scaled-up liquid cultures for *in vitro* plant propagation are essential to overcome some of the limitations imposed by labour-intensive methods and high production costs. Progress in tissue culture automation depends on the use of liquid cultures in bioreactors that can provide rapid proliferation, mechanized tissue cutting and separation, and automated dispensing (Ziv, 1995a; Aitken-Christie et al., 1995).

Liquid cultures have been used for plant culture in both agitated vessels and in bioreactors, for somatic embryogenesis (Styer, 1985; Nadel et al., 1990; Preil, 1991, Scragg, 1992) and as a system for plant propagation through the organogenic pathway (Ziv, 1992; Takayama, 1991). The propagation aspects of several plant species in bioreactors and some of the problems associated with the operation of bioreactors were reviewed by Ziv (1995b; 2000) and Takayama and Akita (1998).

Propagation in bioreactors through the organogenic pathway has been achieved in banana, Boston fern, *Spathiphyllum*, strawberry, potato, poplar, coffee, *Gladiolus*, lilies, pineapple, orchids, *Ornithogalum*, *Nerine*, *Narcissus* and *Cyclamen* (Ziv 2000).

In various types of bioreactors, the mechanical or gas-sparged mixing provided stirring and aeration (Scragg, 1992). Large-scale cultivation of plant cells, embryos or organs has made use of airlift or bubble-column bioreactors instead of stirred-tank bioreactors, due to their low shear

properties. The main advantages of airlift bioreactors is their relatively simple construction, the lack of regions of high shear stress, reasonably high mass and heat transfer and reasonably high yields at low input rates (Denchev et al., 1992). However, bioreactor configuration must be determined according to mixing and aeration requirements of specific plants or tissues, as well as for minimization of shear stress.

In general, bioreactor-culture offers many advantages, including better control of the culture conditions; optimal supply of nutrients and growth regulators; renewal of the culture atmosphere; changing the medium during the culture period according to the developmental stage; filtration of the medium for exudates; contamination control; and production of clusters of buds or somatic embryos for automated handling of the propagules.

The use of liquid cultures in bioreactor for plant propagation imposes several problems such as leakage of endogenous growth factors, the need for an initial high concentration of the inoculum, hyperhydricity and malformation, foam development, shearing and oxidative stress (Ziv, 2000). The major disadvantage encountered is the problem of shoot malformation in liquid media (Ziv, 2000). Attempts to control hyperhydric deformities have focused on better aeration and intermittent plant submergence in the medium, using temporary immersion bioreactors (Teisson et al., 1996; Escalona et al., 1999). Levin (personal communication) used two disposable plastic bioreactors (Life Reactor, Osmotek) as an ebb and flow system for intermittent submergence in micropropagated *Spathiphyllum*. Growth retardants (Ziv, 1992; 2000) have been used to reduce leaf expansion, thus minimising shoot malformation.

The present paper reviews the use of simple bioreactors for micropropagation and describes the advantages and limitation of bubble-column and airlift bioreactors used for plant proliferation.

## 2. Morphogenesis and growth in bioreactors

At present, commercial propagation of most plants is carried out through the organogenic pathway in agar-gelled cultures, even though the protocols are long and costly. The commercial use of bioreactors for unipolar structures such as protocorms, buds or shoots is limited to a small number of plants, mainly due to the hyperhydricity problem in the leaves and shoots. Controlling shoot growth and providing culture conditions that reduced abnormal leaves and enhanced formation of bud or meristematic clusters in potato, *Gladiolus* and *Ornithogalum dubium*, by use of growth retardants, resulted in a high proliferation rate, and limited hyperhydricity (Levin et al.,

1997; Ziv and Hadar, 1991; Takayama, 1991; Takayama and Akita, 1998; Ilan et al., 1995; Ziv et al., 1998; Ziv, 2000).

The development of spherical meristematic or bud clusters in liquid cultures provided a highly proliferating and rapidly growing system. The clusters were amenable to the control of the medium components, to mechanical separation, and to automated inoculation as an efficient delivery system to the final stage for plant growth (Levin et al., 1997; Ziv et al., 1998). In most species, cluster formation appears to be associated with the continuous submergence, circulation and agitation of the plant biomass in the medium, as well as with a balanced ratio of growth-promoting and growth-retarding regulators. The formation of condensed organized structures, in which the shoots are reduced to buds or meristematic tissue in liquid media, has been reported for several plant species. The clusters were made-up of densely-packed meristematic cells, actively dividing and forming new meristemoids on the outer surfaces. The meristemoids surrounded loosely-packed cells in the centre and exhibited some vascularisation as was shown in liquid cultured poplar clusters (McCown et al., 1988). In banana, on the other hand, the clusters were made-up of condensed buds surrounding a central core with a cavity (Ziv et al., 1998). Protocorm-like clusters were also induced in liquid-cultured *Gladiolus* buds (Ziv, 1990) and in several species of the complex *Brodiaea* (Ilan et al., 1995) by addition of PAC or ANC (gibberellin biosynthesis inhibitors) to the medium. In *Phalaenopsis*, protocorm-like bodies were proliferated in bioreactors and regenerated on agar-based medium (Young et al., 2000). In potato and banana (Figure 1), bud clusters were induced by a balanced ratio between kinetin and ancymidol in the liquid medium (Ziv et al., 1998). In woody species, McCown et al. (1988) and Aitkens et al. (1995) described nodules in poplar in liquid medium and in radiata-pine in agar-gelled medium, respectively, induced by a balanced ratio of growth regulators. Levin et al. (1997) worked with several ornamental species and described a several-fold increase of an organogenic biomass consisting of clusters, which proliferated in bioreactors. These were separated mechanically prior to dispensing to agar-gelled cultures for further growth. The production of clusters in *Philodendron* cultured in liquid media required the presence of BA and an inductive treatment for 24-48 h with ancymidol. The short inductive treatment annulled a carry-over dwarfing effect of ancymidol on leaf and shoot development after transplanting of the clusters to agar-gelled medium for further plant growth (Ziv and Ariel, 1991). Growth regulators, promoting or retarding substances when supplied in a specific balanced ratio, apparently act as morphogenic signals and control the development of the spherical meristematic or bud clusters.

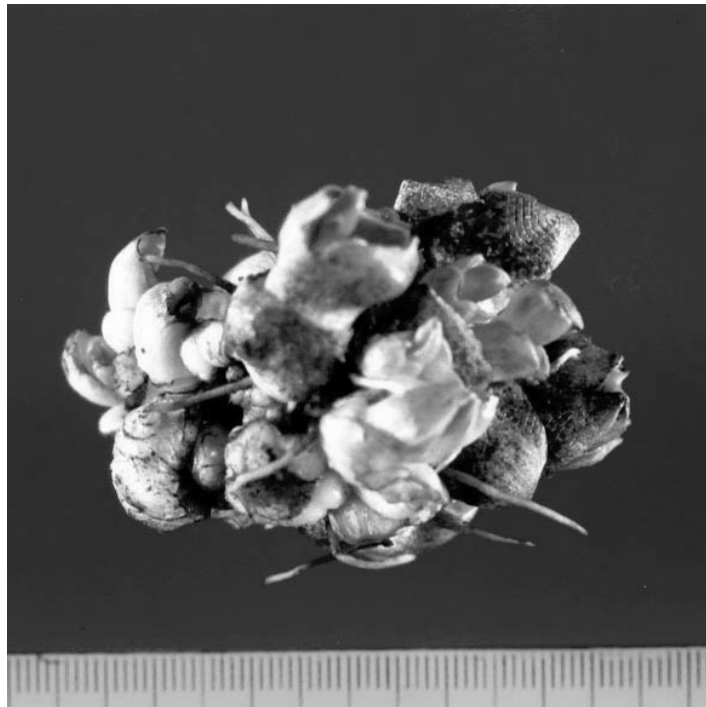


Figure 1: A cluster of banana buds from a bubble-glass-bioreactor (9.75  $\mu\text{mol}$  ancymidol, 22.2  $\mu\text{mol}$  BA and 11.4  $\mu\text{mol}$  IAA).

## 2.1 Types of bioreactors

Various types of simple bioreactors with mechanical or gas-sparged mixing were used in plant and cell cultures to provide stirring, circulation and aeration (Takayama, 1991; Scragg, 1992; Takayama and Akita, 1998, Ziv 2000). Mechanically-stirred bioreactors depend on impellers, including a helical ribbon impeller (Archambault, 1994), magnetic stirrers or vibrating perforated plates. Aeration, mixing and circulation in bubble-column or airlift bioreactors, is provided by air entering the vessel from the side or from the basal opening through a sparger: As the air bubbles rise they lift the plant biomass and provide the required oxygen (Merchuk, 1990, Styer, 1985; Preil, 1991; Cazzulino et al., 1991).

It has been shown that mixing by gas sparging in bubble-column or airlift bioreactors lacking impellers or blades, was far less damaging for clusters than mechanical stirring, since shearing stress was minimized (Ziv and Hadar, 1991; Ilan et al., 1995; Ziv and Shemesh, 1996). The use of plastic disposable airlift bioreactors for bud or meristematic clusters was found to increase proliferation and reduce shearing stress (Ziv et al. 1998).

The main advantage of airlift bioreactors is their relatively simple construction, the lack of regions with high shearing potential, reasonably high gas and nutrient transfer rates and relatively high yields at low input rates (Denchev et al., 1992). A bubble-free oxygen supply bioreactor with silicone tubing was found suitable for embryogenic cell suspensions and provided foam-free cultures (Luttman et al., 1994). For hairy root cultures an acoustic mist bioreactor was found to increase root biomass significantly (Chatterjee et al., 1997). Simple glass, polycarbonate cylinder (Figure 2), or plastic bioreactors were used for propagation of ornamental, vegetable and woody plant species. These included the foliage plants – Boston fern, *Philodendron* and *Spathiphyllum*; the ornamentals – *Gladiolus*, lilies, *Ornithogalum dubium*, *Narcissus*, *Nerine*, *Brodiaea*; and the vegetable crops – cucumber, asparagus and potato. Poplar root cultures regenerating buds, and banana were also propagated in bioreactors. In banana, the type of culture and the volume of the medium affected biomass growth (Table 1). Increasing the concentration of ancymidol decreased biomass growth, increased bud or meristem number per cluster and decreased leaf elongation and expansion (Table 2).

Table 1: The effect of culture type and medium volume on banana bud cluster proliferation in the presence of 2.5 ppm ancymidol after 30 days

Culture vessel capacity (ml)	Medium (volume ml)	FW (g)		Growth value <sup>(1)</sup>	No. buds per cluster
		Initial	Final		
Erlenmeyer 250	50	6.5 ± 0.7	17.5 ± 1.8	1.46	5.6 ± 0.6
Erlenmeyer 500	100	10.8 ± 1.2	57.2 ± 3.1	4.29	6.7 ± 0.8
Glass bioreactor 1000	500	17.6 ± 2.8	123.5 ± 2.1	6.01	12.0 ± 1.8
Disposable bioreactor 2500	1250	21.66 ± 2.8	269.4 ± 4.8	11.4	15.1 ± 2.1

<sup>(1)</sup>Growth value:  $(FW_{\text{final}} - FW_{\text{initial}}) / FW_{\text{initial}}$ .

Table 2: The effect of ancymidol on banana cluster proliferation in disposable plastic bioreactors after 26 days culture

Ancymidol (μmol)	Δ Growth <sup>(1)</sup> (FW g)	Buds or meristems per cluster	Leaf tissue (% FW)
0	172 ± 16	12 ± 0.8	89
3.95	165 ± 12.2	18 ± 2.1	86
9.75	111 ± 9.7	26 ± 3.1	58
19.50	80 ± 5.3	48 ± 3.9	17

<sup>(1)</sup>Initial inoculum 30g l<sup>-1</sup> medium

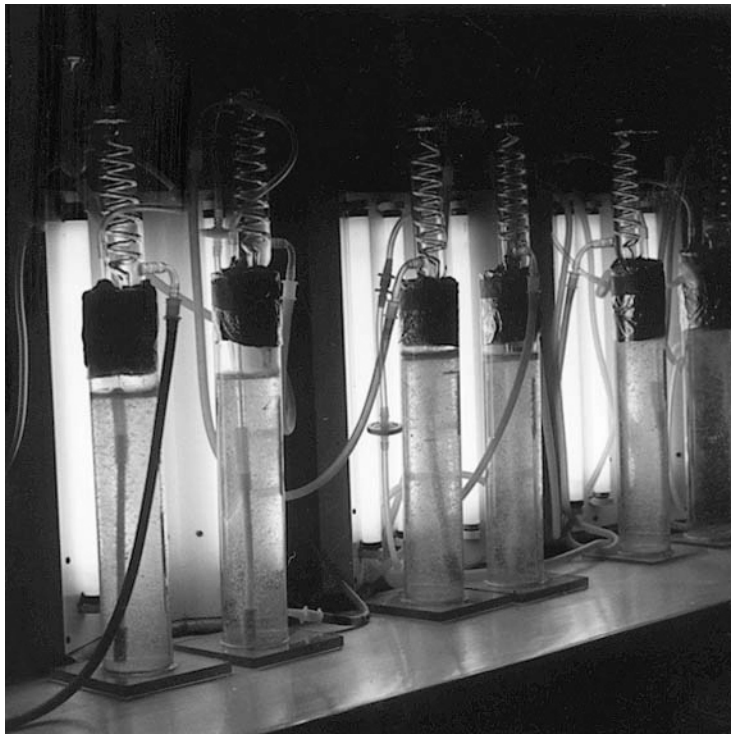


Figure 2: A polycarbonate internal-loop bioreactor used for asparagus embryogenic clusters.

Temporary immersion - or ebb and flow bioreactors - were described as a better aeration system through the periodic immersion and exposure to the gaseous phase (Etienne et al., 1997). Temporary immersion was used for banana, rubber and coffee (Teisson and Alvard, 1995; Etienne et al., 1997; Teisson et al., 1996), for tea (Akula et al., 2000) and on a much larger scale for pineapple and sugarcane (Lorenzo et al., 1998; Escalona et al., 1999). Temporary immersion was found to enhance potato microtuber growth in a rotating bioreactor (Yu et al., 2000). The periodic immersion cycle adapted to each species was found to decrease hyperhydricity, but not eliminate it altogether.

## 2.2 *The gaseous atmosphere*

The culture vessel gas composition is influenced by the volume of the vessel, the volume of the medium and the ventilation. In bioreactors, control of the gaseous phase depends on the gas flow and can be easily manipulated to provide the required concentrations of  $O_2$ ,  $CO_2$  and  $C_2H_4$ . In airlift or bubble-column bioreactors, the air supplied is used for both mixing and

aeration. The importance of aeration and the gaseous phase were shown in potatoes cultured in airlift bioreactors. Induction of tubers was inhibited under continuously submerged conditions. Microtubers developed only after the shoots elongated and reached the gaseous phase. A two-phase culture, substituting the growth medium with a tuber-induction (9% (w/v) sucrose) medium, enhanced tuber formation from shoots which developed above the medium and were exposed to the gaseous phase (Akita and Takayama, 1994).

Oxygen concentrations in liquid cultures depend on the presence of O<sub>2</sub> in the gas phase above and in the air bubbles inside the medium, as well as in the dissolved O<sub>2</sub> in the medium. Air is sparged through a sparger located at the base of the bioreactor. Oxygen requirements may vary from one species to another, and concentration of O<sub>2</sub> in liquid cultures in bioreactors can be regulated by agitation or stirring and through aeration, gas flow and air bubble size.

Increasing O<sub>2</sub> concentrations, in the sparging air, from 21% to 80% (v/v), in bioreactor cultures of Boston fern clusters, enhanced growth values (final FW-initial FW/ initial FW) from 0.61 to 0.92 (Ziv and Hadar, 1991). Reducing O<sub>2</sub> concentrations to 10% (v/v) affected cell differentiation in bioreactor cultures of carrot embryogenic tissue. Under these conditions embryo production was severely inhibited (Jay et al., 1992).

There are reports that high aeration rates, rather than excessive oxygen concentrations, inhibit growth and that reduced growth could be due to depletion of CO<sub>2</sub> or to the removal of various culture volatiles, including CO<sub>2</sub> (Hegarty et al., 1986). CO<sub>2</sub> enrichment in an illuminated bioreactor culture of *Brodiaea* clusters did not affect biomass growth. Increasing CO<sub>2</sub> from 0.3% to 1% (v/v) gave a similar growth value, 4.2 and 5.3, respectively, under the two CO<sub>2</sub> concentrations and 135 μmol m<sup>-1</sup>s<sup>-1</sup> light intensity (Ilan et al., 1995). In *Cyclamen persicum* high CO<sub>2</sub> concentrations correlated with increased production of pro-embryogenic masses (Hvoslef-Eide and Munster, 1998).

### 2.3 *Mineral nutrients consumption*

In bioreactors, in which either humidified air or condensers are used to prevent dehydration, the concentration of the nutrients in the medium is affected mainly by absorption rate and by cell lysis (Archambault et al., 1995). Differentiation and proliferation of micropropagated fern, *Gladiolus*, and *Nerine* nodular clusters in bioreactors was better on ½-strength, rather than on the full-strength, MS minerals (Ziv, unpublished). This was also true for *Lilium* bulblets differentiating on bulb scales, which were cultured in bioreactors (Takayama, 1991). A drop in pH to 4.5 and lower values and the



subsequent increase to pH 5.5 were attributed to the initial utilization of ammonium and to the uptake of nitrate at a later stage.

The composition of minerals, monitored during the culture of *Brodiaea* in liquid media changed, with phosphate, ammonia, nitrate and potassium depleting faster and prior to the depletion of  $\text{Ca}^{++}$  and  $\text{Mg}^{++}$  (Ilan et al., 1995). In general, biomass growth is limited by the availability of phosphate, nitrogen and carbohydrates, and to a lesser extent by the availability of calcium, magnesium and other ions.

#### 2.4 Carbohydrate supply and utilization

Sucrose, and to a lesser extent glucose, fructose, or sorbitol, are the most commonly used carbohydrates *in vitro*. In general, sucrose is removed rather rapidly from the medium and after 10-15 days the sucrose can be completely depleted or reduced to 5-10 g l<sup>-1</sup> from an initial concentration of 30 g l<sup>-1</sup> in both agar-gelled and liquid cultures. At the same time glucose and fructose that appear in the medium due to sucrose hydrolysis increases in the presence of invertase in the culture medium, and can reach concentrations of 5-10 g l<sup>-1</sup>. In embryonic suspension cultures of celery, the addition of mannitol reduced cell lysis and enhanced somatic embryogenesis. When 40 g l<sup>-1</sup> mannitol was added, a higher number of embryos was produced and the frequency of singulated normal embryos was increased (Nadel et al., 1990).

The biomass of Boston fern meristematic clusters in a bubble-column bioreactor was increased with the increase in sucrose concentrations from 7.5 g l<sup>-1</sup> to 30 g l<sup>-1</sup>, while higher concentrations caused a decrease in cluster growth. Elevated sucrose concentrations in the medium caused a decrease in the clusters size and leaf chlorophyll content (Ziv and Hadar, 1991). *Gladiolus* clusters cultured in the presence of growth retardants had a higher concentration of starch - 845 as compared to 585 mg g<sup>-1</sup> DW in the control (Ziv, 1992). Potato microtubers grew at a faster rate in a rotating bioreactor when the medium was replaced frequently and the number of tubers >1 g increased four-fold when 8% (w/v) sucrose was used (Yu et al., 2000).

#### 2.5 Growth regulator effects

The availability of growth regulators in bioreactor cultures can be more effective in controlling the proliferation and regeneration potential than in agar cultures, due to the direct contact of plant cells and aggregates with the medium.

In embryogenic cultures of *Nerine*, auxin and cytokinins were used to induce proembryogenic clusters. Embryogenic expression was achieved,

however, only after a short exposure to 2-iso-pentenyladenine (2iP) and further subculture to a growth regulator-free medium (Lilien-Kipnis et al., 1994). The addition of paclobutrazol with an elevated concentration of phosphate enhanced bulblet growth in *Nerine* (Vishnevetsky et al., 2000). Excised aspen roots cultivated in liquid medium in bioreactors in the presence of thidiazuron (TDZ) regenerated buds on the entire root surface, as compared to BA-treated root explants, in which the buds regenerated only in close proximity to the site of initiating lateral roots. Roots cultured in the presence of ancymidol developed clusters that were separated mechanically and developed normal shoots on a rooting medium (Vinocur et al., 2000).

Since one of the major problems in liquid cultured plants is malformation of shoots and hyperhydricity, the induction of meristematic or bud clusters with arrested leaf growth (McCown et al., 1988; Ziv, 1991; Ziv and Shemesh, 1996) was one of the solutions to reduce hyperhydricity. The use of relatively high cytokinin concentrations or growth retardants, which inhibit gibberellin biosynthesis, was the most effective method to reduce shoot and leaf growth and to promote the formation of meristematic clusters (Ziv, 1990). In *Spathiphyllum*, addition of PAC decreased biomass growth (Figure 3). The removal of PAC after subculture, enhanced growth in cultures treated with the highest concentrations of growth retardant (Figure 4). However, even after the removal of PAC on subculture, shoot development was inhibited in particular in cultures that were treated with high concentrations of the retardant (Figure 5).

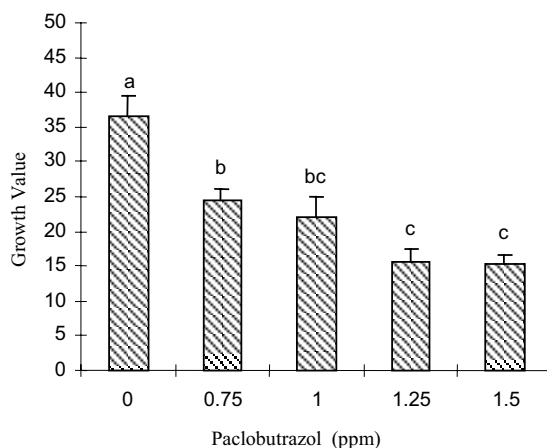


Figure 3: The effect of paclobutrazol on the growth of *Spathiphyllum* in liquid culture.

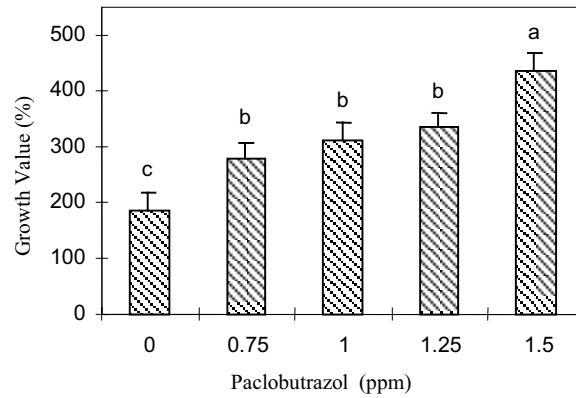


Figure 4: Clusters growth of *Spathiphyllum* after subculture to a medium lacking paclobutrazol following a pretreatment with the growth retardant.

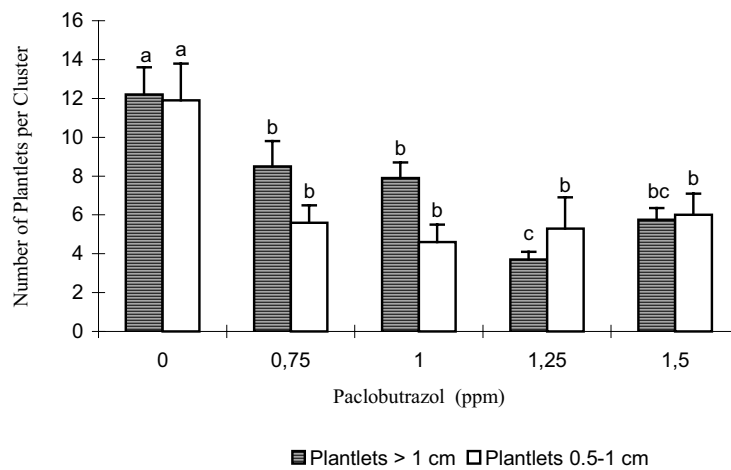


Figure 5: Shoot and bud growth of *Spathiphyllum* clusters in paclobutrazol – free medium after a pre-treatment with the growth retardant.

## 2.6 Shearing and oxidative stress

In many plants cultivated in bioreactors, the continuous aeration, mixing and circulation cause shearing damage and cell wall breakdown. The cell debris adheres to the vessel and causes foaming that prevents adequate liquid circulation and oxygen supply. Foaming was reduced when ½-strength MS

medium minerals were used (Ziv, 1995b) and by lowering the concentration of calcium in the medium (Takayama et al., 1991). Disposable plastic bioreactors with a volume of 2 and 5 litre capacity used for organogenic micropropagation were found to provide good circulation with reduced cell shearing, cell damage and foaming. Meristematic and bud clusters are less shear-sensitive than large, vacuolated cells (Ziv et al., 1998).

The excessive accumulation of water in plant tissue (the most characteristic symptom of hyperhydricity) can result in oxygen depletion in the cells, induce oxidative stress, production of reactive oxygen species (ROS) and cause injury to the plant tissue. Several developmental processes in tissue cultured plants can be affected by ROS leading to recalcitrance and loss of morphogenetic competence (Benson, 2000). ROS such as  $H_2O_2$  and hydroxyl free-radicals react instantaneously with almost any substrates (Levine, 1999).

In *Narcissus* liquid cultures, antioxidant enzyme activities were found to correlate with hyperhydric shoots and leaf section explant malformation (Chen and Ziv, 2001). In ancymidol (ANC) treated hyperhydric *Narcissus* shoots, ascorbate peroxidase (APX) and catalase (CAT) activities were significantly greater than in their non-treated, non-hyperhydric counterparts. In the ANC-treated hyperhydric *Narcissus* leaf sections, APX and CAT activities were significantly less than in the non-hyperhydric ones cultured in medium lacking ANC, especially during the period of meristematic centre formation.

The formation of meristematic centres on ANC-treated hyperhydric leaf sections during the 3<sup>rd</sup> and 4<sup>th</sup> weeks in culture, could have resulted from lower  $H_2O_2$  concentrations than in non-treated ones. Lower concentrations of  $H_2O_2$  in ANC-treated hyperhydric leaf sections may cause a lower hydroxyl free-radical accumulation and therefore ANC-treated leaf sections may have the ability to develop meristematic centres.

### 3. Conclusion

The understanding of the signals and mechanisms that control organogenesis and somatic embryogenesis in liquid media will greatly advance the use of bioreactors for commercial micropropagation. The immediate microenvironment, both chemical and physical factors, is the major factor involved in the control of normal morphogenesis of plants. The physiological status of the plant tissue will affect cell interaction with the environmental signals and will determine developmental events, proliferation and growth. Further basic and applied research can provide the

information necessary for an efficient and economic use of bioreactors for plant propagation.

## References

- Aitken-Christie J, Kozai T & Takayama S (1995) Automation in plant tissue culture. General introduction and overview. In: Aitken Christie J, Kozai T & Smith MAL (eds) Automation and Environment Control in Plant Tissue Culture (pp. 1-18). Kluwer Acad. Publ., Dordrecht
- Akita M & Takayama S (1994) Induction and development of potato tubers in a jar fermentor. *Plant Cell Tissue Organ Culture* 36: 177-182
- Akula A, Becker D & Bateson M (2000) High-yielding repetitive somatic embryogenesis and plant recovery in a selected tea clone, "TRI-2025", by temporary immersion. *Plant Cell Rep.* 19: 1140-1145
- Ammirato PV & Styer DJ (1985) Strategies for large scale manipulation of somatic embryos in suspension culture. In: Zaitlin M, Day P & Hollaender A (eds) Biotechnology in Plant Science: Relevance to Agriculture in the Eighties (pp. 161-178). Academic Press, New York
- Archambault J, Lavoie L, Williams RD & Chavarie C (1995) Nutritional aspects of *Daucus carota* somatic embryo cultures performed in bioreactors. In: Terzi M, Cella R & Flavinga A (eds) Current Issues in Plant Molecular and Cellular Biology (pp. 681-687). Kluwer Acad. Publ., Dordrecht
- Attree SM, Pomery MK & Fowke LC (1994) Production of vigorous, desiccation tolerant white spruce [*Picea glauca* (Moench.) Voss.] synthetic seeds in a bioreactor. *Plant Cell Rep.* 13: 601-606
- Benson E (2000) Do free radicals have role in plant tissue culture recalcitrance? Special symposium: *in vitro* plant recalcitrance. *In Vitro Cell Bio.* 36: 163-170
- Cazzulino D, Pederson H & Chin CK (1991) Bioreactors and image analysis for scale-up and plant propagation. In: Vasil IK (ed) Cell Culture and Somatic Cell Genetics of Plants (pp. 147-177). Academic Press, San Diego, CA
- Cervelli R & Senaratna T (1995) Economic analysis of automated embryogenesis. In: Aitken-Christie J, Kozai T & Smith MAL (eds) Automation and Environmental Control in Plant Tissue Culture (pp. 29-64). Kluwer Acad. Publ., Dordrecht
- Chatterjee C, Corell MJ, Weathers PJ, Wyslouzil BE & Wacers DB (1997) Simplified acoustic window mist bioreactor. *Biotechnology Techniques* 11: 159-158
- Chen J & Ziv M (2001) The effect of ancymidol on hyperhydricity, regeneration, starch and antioxidant enzymatic activities in liquid-cultured Narcissus. *Plant Cell Rep.* 20(1): 22-27
- Denchev PD, Kuklin AI & Scragg AH (1992) Somatic embryo production in bioreactors. *J. Biotech.* 26: 99-109
- Escalona M, Lorenzo JC, Gonzales BL, Daquinta M, Borroto CG, Gozales JI & Desjardine Y (1999) Pineapple (*Ananas comosus* L. Merr.) micropropagation in temporary immersion system. *Plant Cell Rep.* 18: 743-748
- Etienne H, Lartaud M, Michaux-Ferrière N, Carron MP, Berthouly M & Teisson C (1997) Improvement of somatic embryogenesis in *Hevea brasiliensis* (Müll. Arg.) using the temporary immersion technique. *In Vitro Cell. Dev. Biol. Plant* 33: 81-87

- Hegarty PK, Smart NJ, Scragg H & Fowler MW (1986) The aeration of *Catharanthus roseus* L.G. Don suspension cultures in airlift bioreactors: the inhibitory effect at high aeration rates on culture growth. *J. Expt. Bot.* 37: 1911-1920
- Hvoslef-Eide AK & Munster C (1998) Somatic embryogenesis of *Cyclamen persicum* Mill. In bioreactors. *Comb. Proc. Int. Plant Prop.* 47: 377-382
- Ilan A, Ziv M & Halevy AA (1995) *In vitro* propagation in liquid culture and acclimatization of *Brodiaea*. *Scientia Hort.* 63: 101-112
- Jay V, Genestier S & Courduroux JC (1992) Bioreactor studies on the effect of dissolved oxygen concentrations on growth and differentiation of carrot (*Daucus carota* L.) cell cultures. *Plant Cell Rep.* 11: 605-608
- Levin R, Stav R, Alper Y & Watad AA (1997) A technique for repeated non-axenic subculture of plant tissues in a bioreactor on liquid medium containing sucrose. *Plant Tissue Culture Biotech.* 3: 41-45
- Levine A (1999) Oxidative stress as a regulator of environmental responses in plants. In: Lerner HR (ed) *Plant Responses to Environmental Stresses: From Phytohormones to Genome Reorganization* (pp. 247-264). Marcel Dekker Inc NY
- Lilien-Kipnis H, Azizbekova N & Ziv M (1994) Scaled-up proliferation and regeneration of *Nerine* in liquid cultures. Part II. Ontogeny of somatic embryos and bulblet regeneration. *Plant Cell, Tiss. Org. Cult.* 39: 117-123
- Lorenzo JC, Gonzalez BL, Escalona M, Teisson C, Espinosa P & Borroto C (1998) Sugarcane shoot formation in an improved temporary immersion system. *Plant Cell, Tissue Organ Culture* 54: 197-200
- Luttman R, Florek P & Preil W (1994) Silicone-tubing aerated bioreactors for somatic embryo production. *Plant Cell, Tiss. Org. Cult.* 39: 157-170
- McCown BH, Zeldin EL, Pinkalla HA & Dedolph RR (1988) Nodule culture: a developmental pathway with high potential for regeneration, automated propagation and plant metabolite production of woody plants. In: Hanover MW & Keathley DE (eds) *Genetic Manipulation of Woody Plants* (pp. 146-166). Plenum Press, New York
- Merchuk JC (1990) Why use air-lift bioreactors? *Trends in Biotechnology.* 8: 66-71
- Murashige T & Skoog F (1962) Revised medium for rapid growth and bioassay with tobacco tissue cultures. *Physiol. Plant.* 15: 473-497
- Nadel BL, Altman A & Ziv M (1990) Regulation of large scale embryogenesis in celery. *Acta Hort.* 280: 75-82
- Preil W (1991) Application of bioreactors in plant propagation. In: Debergh PC and Zimmerman RH (eds) *Micropropagation: Technology and Application* (pp. 425-455). Kluwer Acad. Publ., Dordrecht
- Sakamoto Y, Onishi N & Hirose T (1995) Delivery systems for tissue culture by encapsulation. In: Aitken-Christie J, Kozai T & Smith MAL (eds) *Automation and Environmental Control in Plant Tissue Culture* (pp. 215-244). Kluwer Acad. Publ., Dordrecht
- Scragg AH (1992) Large-scale plant cell culture: methods, applications and products. *Current Opinion Biotech.* 3: 105-109
- Stuart DA, Strickland SG & Walker KA (1987) Bioreactor production of alfalfa somatic embryos. *Hort. Sci.* 22: 800-803
- Styer DJ (1985) Bioreactor technology for plant propagation. In: Henke RR, Hughes KW, Constantin MJ & Hollaender A (eds) *Tissue Culture of Forestry and Agriculture* (pp. 117-130). Plenum Press, New York

- Takayama S (1991) Mass propagation of plants through shake and bioreactor culture techniques. In: Bajaj Y P S (ed) *Biotechnology in Agriculture and Forestry: High-Tech and Micropropagation*, Vol. 17 (pp. 1-46). Springer-Verlag, Berlin
- Takayama S & Akita M (1998) Bioreactor techniques for large-scale culture of plant propagules. *Adv. Hort Sci*, 12: 93-100
- Taurus TE & Dunstan DI (1995) Scale-up of embryogenic plant suspension cultures in bioreactors. In: Jain M, Gupta PK & Newton RJ (eds) *Somatic Embryogenesis in Woody Plants*, Vol. 1 (pp. 265-269). Kluwer Acad. Publ., Dordrecht
- Teisson C & Alvard D (1995) A new concept of plant *in vitro* cultivation liquid medium: temporary immersion. In: Terzi M et al. (eds) *Current Issues in Plant Molecular and Cellular Biology* (pp. 105-110). Kluwer Acad. Publ., Dordrecht
- Teisson C, Alvard D, Berthouly B, Cote F, Escalant JV, Etienne H & Lartaud M (1996) Simple apparatus to perform plant tissue culture by temporary immersion. *Acta Hort.* 40: 521-526
- Vishnevetsky J, Zamski E & Ziv M (2000) Carbohydrate metabolism in *Nerine sarniensis* bulbs developing in liquid culture. *Physiol. Plant.* 108(4): 361-369
- Young PS, Murthy HN & Yoeup PK (2000) Mass multiplication of protocorm-like using bioreactor system and subsequent plant regeneration in *Phalaenopsis*. *Plant Cell, Tiss. Org. Cult.* 63: 67-72
- Yu WC, Joyce PJ, Cameron DC & McCown BH (2000) Sucrose utilization during potato microtuber growth in bioreactors. *Plant Cell Rep.* 19: 407-413
- Ziv M (1990) Morphogenesis of gladiolus buds in bioreactors - implication for scaled-up propagation of geophytes. In: Nijkamp HJJ, van der Plas LHW & van Aatrijk J (eds) *Progress in Plant Cellular and Molecular Biology* (pp. 119-124). Kluwer Acad. Publ., Dordrecht
- Ziv M (1991) Vitrification: Morphological and physiological disorders of *in vitro* plants. In: Debergh PG & Zimmerman RH (eds) *Micropropagation: Technology and Application* (pp. 45-69). Kluwer Acad. Publ., Dordrecht
- Ziv M (1992) The use of growth retardants for the regulation and acclimatization of *in vitro* plants. In: Karssen CM, Van Loon LC, Vreugdenhil D (eds) *Progress in Plant Growth Regulation* (pp. 809-817). Kluwer Acad. Publ., Dordrecht
- Ziv M (1995a) *In vitro* acclimatization. In: Aitken-Christie J, Kozai T & Smith MAL (eds) *Automation and Environmental Control in Plant Tissue Culture* (pp. 493-516). Kluwer Acad. Publ., Dordrecht
- Ziv M (1995b) The control of bioreactor environment for plant propagation in liquid culture. *Acta Hort.* 319: 25-38
- Ziv M (2000) Bioreactor technology for plant micropropagation. *Horticultural Reviews* 24: 1-30
- Ziv M & Ariel T (1991) Bud proliferation and plant regeneration in liquid-cultured philodendron treated with ancymidol and paclobutrazol. *J. Plant Growth Regul.* 10: 53-57
- Ziv M & Hadar A (1991) Morphogenic pattern of *Nephrolepis exaltata* Bostoniensis in agar-gelled or liquid culture. Implication for mass propagation. *Israel. J. Bot.* 40: 7-16
- Ziv M & Shemesh D (1996) Propagation and tuberiation of potato bud clusters from bioreactor culture. *In Vitro Cell. Dev. Biol. Plant* 32: 31-36
- Ziv M, Ronen G & Raviv M (1998) Proliferation of meristematic clusters in disposable pre-sterilized plastic bioreactors for large-scale micropropagation of plants. *In Vitro Cell Dev. Biol. Plant* 34: 152-158