



# Management of Lipid Abnormalities in Patients with Diabetes

Anne Sillars<sup>1</sup> · Naveed Sattar<sup>1</sup>

Published online: 22 November 2019  
© The Author(s) 2019

## Abstract

**Purpose of Review** To describe lipid abnormalities in diabetes, when they occur and the evidence base for lipid management with established and new drugs to prevent diabetes complications. We also discuss how to manage statin intolerance.

**Recent Findings** Statins remain first-line therapy in patients with diabetes, though newer therapies to reduce LDL-C have emerged, including ezetimibe as an add-on therapy to statins, and injectable PCSK9 inhibitors, both of which are safe and effective in diabetes. Emerging evidence suggests a need to consider lipid-lowering therapies more often in younger patients with both type 1 and type 2 diabetes.

**Summary** Statins remain the cornerstone of lipid management in diabetes but other options are increasing. There is also now evidence for better managing apparent statin intolerance. Notably, younger patients lose the most life years from their diabetes, an observation that future guidelines need to consider.

**Keywords** Dyslipidemia · Type 2 diabetes · Type 1 diabetes · Statins · Ezetimibe · PCSK9 inhibitors

## Introduction

Diabetes is a well-recognized risk factor for cardiovascular disease (CVD) and while hyperglycemia enhances risk, such patients are often obese, have hypertension, and are characterized by a specific dyslipidemia, such that the CVD risk in diabetes is multifactorial. Notably, one could say that nearly all patients with type 2 diabetes (T2DM) have lipid abnormalities. However, only in the late 1990s to 2000s, after major statin trials and relevant guideline changes, did we start to aggressively treat these lipid abnormalities, at least in high-income countries. For the next two decades or so, statins formed the cornerstone of lipid-lowering therapy in diabetes. This statin-dominated pattern has not changed, but additional

ways to lessen LDL-C have emerged, and thus doctors have more therapies in their armory to treat dyslipidemia (Table 1). Furthermore, there is a push for some particularly high-risk patients to be treated more aggressively. There is also discussion surrounding when and how to treat younger patients with T2DM who have particularly elevated risk for CVD and greater premature mortality. Finally, although we focus mostly on lipids in T2DM, emerging data suggest we may be undertreating lipid levels in people with type 1 diabetes (T1DM), who lose on average more life years than those with T2DM. These aspects are discussed in more detail in this short review of the field.

## What Are the Lipid Abnormalities in T2DM?

Dyslipidemia is an important biochemical abnormality in patients with T2DM, because of its independent association with an increased risk of morbidity and mortality from CVD [1–3]. Characteristically, these lipid abnormalities are high fasting and postprandial plasma triglyceride (TG) concentration, low levels of high density lipoprotein cholesterol (HDL-C), and normal or slightly increased concentration of low-density lipoprotein cholesterol (LDL-C), and increased numbers of small dense LDL (sdLDL) particles. Apolipoprotein B (ApoB), a carrier protein in both LDL and VLDL, is also

This article is part of the Topical Collection on *Lipid Abnormalities and Cardiovascular Prevention*

✉ Naveed Sattar  
naveed.sattar@glasgow.ac.uk

Anne Sillars  
Anne.sillars@glasgow.ac.uk

<sup>1</sup> The Institute of Cardiovascular and Medical Sciences, University of Glasgow, BHF Glasgow Cardiovascular Research Centre, 126 University Place, Glasgow G12 8TA, UK

**Table 1** Summary of trial evidence for lipid lowering in type 2 diabetes

Classification of drug	Key trials	Findings	Clinical implications
Statins	CTT	LDL-C reduction of 1 mmol/L results in approximately 23% reduction in CV event. Intensive statin regimes result in statistically significant 15% further reduction in major vascular events, without significant side effects.	Statins as first line in patients with diabetes. Nowadays, the most commonly used are atorvastatin and rosuvastatin. Both have greater benefits on TG reduction than the older simvastatin and pravastatin.
Ezetimibe	IMPROVE-IT	Reduced CV mortality, major CV event and stroke by 5.5% absolute RR (hazard ratio, 0.85; 95% confidence interval, 0.78–0.94). The largest relative reductions occurred in patients with DM were in MI (24%) and stroke (39%).	First add-on therapy if patients are not reaching targets for LDL-c or non-HDL-c despite maximally tolerated statin therapy
PCSK9 inhibitor	FOURIER	Evolocumab reduced cardiovascular outcomes in patients with diabetes: HR 0.83 (95% CI 0.75–0.93; $p = 0.0008$ ) for primary composite endpoint. Similar data for Alirocumab.	Currently reserved for patients at very high absolute risk for CVD. This includes patients with FH or existing CVD, with sustained elevations in LDL-c despite maximally tolerated statin therapy plus ezetimibe.
Fibrates	ACCORD	Modest changes seen in the reduction of TG levels and increase in HDL-C levels.	Add-on to statins for mixed hyperlipidemia, without robust evidence demonstrating improved outcomes in CVD risk. Further ongoing trials with newer fibrates.
Icosapent ethyl; Eicosapentaenoic acid (EPA) ethyl ester	REDUCE-IT	Primary endpoint event occurred in 17.2% of treated patients compared with 22.0% in placebo group (HR 0.75; 95% CI 0.68 to 0.83; $p < 0.001$ )	Potential new therapy with modest lowering of TG levels. Outcome benefits may be largely independent of TG lowering. Ongoing trials of similar agents should help reveal mechanisms in due course.
Bempedoic acid; ATP citrate lyase inhibitor	CLEAR-Harmony	Treatment reduced the mean LDL cholesterol level – 16.5% from baseline (difference vs. placebo in change from baseline, – 18.1 percentage points; 95% CI, – 20.0 to – 16.1; $p < 0.001$ ).	Potential new therapy for LDL cholesterol lowering

raised. Increased mobilization of free fatty acids (FFA) from adipose tissue, in addition to impaired insulin-mediated skeletal muscle uptake, results in increased circulating FFA levels, increased hepatic fatty acid influx, and TG formation [4, 5].

Traditionally, LDL size and density are linked with CVD [6, 7], as well as LDL particle concentration, with small dense LDL particles postulated as having the greatest contribution to atherogenic disease. The etiology of this has shown to be multifactorial with in vitro studies demonstrating reductions in LDL receptor affinity [8], increased arterial wall binding of LDL [9], and altered LDL oxidation [10], each contributing to increased CVD risk. Reduced HDL concentration is usually characterized by reduced levels of subspecies HDL<sub>2</sub> and is often associated with high TG levels [11]. Patients with T2DM are also likely to have smaller HDL particles.

However, another way to view lipid-associated risk in T2DM stems from genetic evidence from Ference et al. In their recent work, they compared the association of triglyceride-lowering LPL variants and LDL-C-lowering LDLR variants with the risk of CVD per unit difference in Apo B, to demonstrate that reducing both TG and LDL-C variants was associated with lower CHD risk per unit lower level of Apo B-containing lipoproteins [12]. Thus, it appears that the number of ApoB containing particles is the most

important predictor of CVD risk, and therefore in patients with T2DM with raised TG levels, ApoB tends to be higher (due to accumulation of VLDL particles and smaller dense LDL) resulting in a raised lipid-associated risk for CVD. Whether apo B should be recommended for risk assessment in people with diabetes is a topical issue. It is our view that routine measurement of apo B is not presently needed given that a diagnosis of diabetes itself warrants lipid lowering and that non-HDL-cholesterol, which is high in diabetes, is available as a secondary lipid target. In recent analyses of UK biobank data, we showed that once total cholesterol and HDL-cholesterol were factored into a cardiovascular risk score, apo B adds little further predictive value [13]. We recognise some researchers remain strongly in favour of measuring apo B but its far greater cost and limited added prediction benefit, means its addition is unlikely to be cost effective.

### When Evidence Base for Statin Use in Diabetes Became Unquestionable

Throughout the 1990s and 2000s, a body of evidence demonstrating the benefits of statin therapy, both in the general population and in patients with diabetes, was created. The trials conducted had differing recruitment criteria, different

outcomes with varying analyses and different drugs were studied. In 2005, the Cholesterol Treatment Trialists' (CTT) Collaboration published a prospective meta-analysis utilizing data from 14 randomized trials of statin therapy, including data from 90,056 individuals [14]. With the increased power from the combined data, they showed that statin therapy statistically reduced LDL-C, and therefore CVD risk, over 5 years in an approximately linear fashion. Overall, LDL-C was approximately 0.8 mmol/L lower at 5 years in patients treated with statins. CTT demonstrated that a reduction of LDL-C of 1 mmol/L at 5 years result in an approximately 23% reduction in CV event, and that ultimately, the absolute benefit to be gained is based upon the individual's baseline risk. Therefore, patients with T2DM stand to benefit more than those without diabetes from statin therapy. In 2010, the CTT collaboration furthered their analyses to assess the benefits of intensive LDL cholesterol lowering with statin therapy [15]. They looked at studies with an intensive versus standard regime (five studies) and those with a statin versus control regimes (21 studies). Intensive regimes resulted in a statistically significant 15% further reduction in major vascular events ( $p < 0.0001$ ) compared with standard regimes, and the mean further reduction in LDL-C at 1 year was 0.51 mmol/L. Across all patients studied, further reductions in LDL-C resulted in the reduction of incident CV events by approximately one fifth for each 1.0 mmol/L reduction. These findings occurred without an increase in side effects, and the CTT collaboration has subsequently published a statement highlighting statin safety and tolerability [16].

For these reasons, statins are considered first-line treatments for many with T2DM, even at diagnosis, and in those patients with multiple risk factors for CVD, high-dose statin is recommended (Table 1).

## Other Proven Cardioprotective Cholesterol-Lowering Therapies in Diabetes

### Ezetimibe

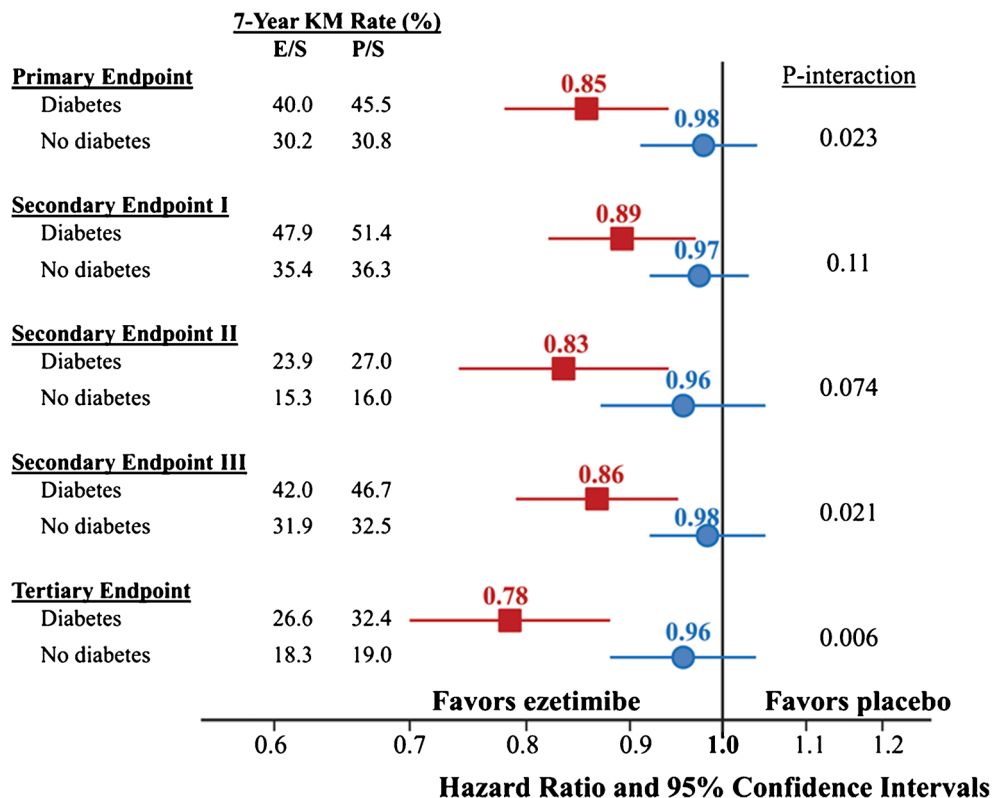
Ezetimibe selectively inhibits dietary and biliary cholesterol resulting in a reduction in LDL-C, a very modest increase in HDL-C (1–3%), and has no effect on TG. Prior to 2015, the evidence base for CV risk reduction with ezetimibe was equivocal [17–19], with the ENHANCE-trial failing to show improved CV outcomes [20]. However, in 2015, the Improved Reduction of Outcomes: Vytorin Efficacy International Trial (IMPROVE-IT) which randomized 18,144 patients with ACS to simvastatin 40 mg plus ezetimibe 10 mg daily or simvastatin alone [21] was the first trial to demonstrate improved CV outcomes using a statin plus a non-statin add-on. Simvastatin plus ezetimibe reduced the primary outcome of CV mortality, major CV event, or stroke by 34.7 vs. 32.7%; ( $p = 0.016$ ) and demonstrated a reduction in MI and stroke. These results were

likely due to LDL-C lowering, and this resulted in a change to guidelines to include ezetimibe therapy as an add-on to statin therapy. Furthermore, in 2018, a subgroup analysis of the 27% of patients in IMPROVE-IT with baseline diabetes suggested that the effect of ezetimibe was in fact most beneficial in patients with diabetes [22••], as demonstrated in Fig. 1. Indeed, if we take this figure at face value, it appears that the relative risk (RR) reduction from ezetimibe was evident only in those with T2DM. One suspects this is somewhat of a chance finding, but nevertheless, the striking findings in those with diabetes will lead to greater consideration of ezetimibe in diabetes when patients are either unable to tolerate a statin or when they are far from target values despite maximally tolerated statin dose.

### PCSK9 Inhibitors

Proprotein convertase subtilisin/kexin type 9 (PCSK9) inhibitors are a modern class of monoclonal antibody injectable therapies developed to lower LDL-C by reducing the degradation of LDL receptors in the liver and increasing LDL-C clearance. Currently in the UK and other high-income countries, evolocumab and alirocumab are available for patients with familial hypercholesterolaemia with persistently raised LDL-C, or very high-risk patients, and are given as injections either two- or four-weekly. Recent trial evidence clearly demonstrates their clinical efficacy. The FOURIER trial, a large randomized, double-blind, placebo-controlled trial conducted on high-risk patients demonstrated that evolocumab, in addition to statin therapy, lowered baseline LDL-C by 59% compared with placebo, with a corresponding reduction in CV risk (hazard ratio (HR), 0.85; 95% confidence interval [CI], 0.79 to 0.92;  $p < 0.001$ ) [23]. The investigators have subsequently published their pre-specified analysis on the 16,533 patients with diabetes at baseline (40% of patients recruited in the FOURIER trial) demonstrating that evolocumab was beneficial in patients with diabetes and without, with similar levels of CV risk reduction; primary composite endpoint without diabetes HR 0.87 (95% CI 0.79–0.96;  $p = 0.0052$ ) and with diabetes HR 0.83 (95% CI 0.75–0.93;  $p = 0.0008$ ) ( $p_{\text{interaction}} = 0.60$ ) [24•]. Pertinently, they also demonstrated that PCSK9 inhibition did not increase the risk of diabetes or worsen glycemic control. Similarly, the ODYSSEY trial looked at outcomes of alirocumab in addition to statin therapy in patients following an acute coronary syndrome (ACS). The authors reported occurrence of a primary end point event in 11.1% of placebo patients versus 9.5% of alirocumab-treated patients (HR 0.86 [95% CI 0.78–0.93],  $p < 0.001$ ) [25]. They also conducted a pre-specified analysis on patients with diabetes, showing that the drug did not increase new-onset diabetes risk, and that a similar relative risk reduction was seen in diabetes patients; HR 0.84, (95% CI 0.74–0.97) [26].

**Fig. 1** Ezetimibe composite efficacy outcomes by treatments and diabetes status. (With permission from: Giugliano RP, et al. *Circulation* 2018;137:1571–1582) [22••]



To assess the efficacy on metabolic profiling of PCSK9 inhibitors compared with statins, a large, multi-centre collaboration utilized circulating metabolic measures in eight population cohorts ( $N = 72,185$ ), using *PCSK9* rs11591147 as an unconfounded proxy to mimic the therapeutic effects of PCSK9 inhibitors. In this, we concluded that genetic inhibition of PCSK9 had similar metabolic effects to statin therapy on detailed lipid and metabolite profiles. However, PCSK9 inhibition was predicted to have weaker effects on the lowering of VLDL lipids compared with statins for an equivalent lowering of low-density lipoprotein cholesterol, potentially translating into slightly smaller reductions in CVD risk [27]. Of course, such a small difference is unlikely to be pertinent in very high-risk patients recommended for PCSK9 inhibitors in clinical practice, most of whom will have LDL-c levels well above targets.

### The Evidence Base for Fibrates in Type 2 Diabetes

Peroxisome proliferator-activated receptor- $\alpha$  (PPAR- $\alpha$ ) agonists, or fibrates, are a class of drug used to lower TG levels and have a modest effect on raising HDL-C levels. They are generally considered add-on therapy to statins, but can be utilized alone, and although they are less effective at lowering total cholesterol, they can increase HDL-cholesterol and reduce TG levels more effectively than statins. The evidence base for use in diabetes is however limited in comparison to the strong and consistent statin evidence. The Helsinki Heart Study

reported a significant reduction in CVD outcomes with gemfibrozil in men with dyslipidemia [28], but neither the Fenofibrate Intervention and Event Lowering in Diabetes (FIELD) study nor the ACCORD study showed a reduction in total CVD outcomes in studies looking specifically in patients with T2DM. The FIELD study did not demonstrate a difference in the primary composite endpoint of CHD death ( $p = 0.16$ ), but it did show a reduction in nonfatal myocardial infarctions and revascularizations. It should be noted that a larger proportion of the placebo group was commenced on statin therapy, which may have attenuated the treatment benefit [29] in the fenofibrate group. Five years after FIELD, the ACCORD study group also failed to demonstrate a reduction in the rate of fatal CV events, nonfatal myocardial infarction, or nonfatal stroke when fenofibrate was added to simvastatin [30], with only a modest reduction of TG levels and an increase in HDL-C levels seen. Consequently, the use of these drugs is generally reserved as an add-on to statins for mixed hyperlipidemia.

There is continuing interest, however, in these drugs. Jun and colleagues suggested that although trial findings of the effects of fibrates were inconsistent, across the board, fibrates did demonstrate an approximately 10% RR reduction from major cardiovascular events and 13% RR reduction for coronary events. Therefore, this class of drug may play a role in high-risk individuals [31]; the PROMINENT study is currently investigating CV outcomes in patients with diabetes taking

pemafibrate, a selective peroxisome proliferator activator modulator- $\alpha$  (SPPARM- $\alpha$ ), which in pre-trial data was shown to reduce TG  $\sim$  50%, increase HDL-C by 13–16% and increase LDL-C by up to 13% (0.4 g daily dose) [32]. The drug has a different structure from traditional PPAR- $\alpha$  agonists, but the rationale for the study remains: that lowering TG and inflammation will improve CV outcomes in high-risk patients [33]. Patients with T2DM (of longer than 12 weeks duration) with mild-to-moderate hypertriglyceridemia (TG 2.26–5.64 mmol/l) and low HDL-C levels ( $\leq$ 1.03 mmol/l), who are either receiving moderate-to-high-intensity statin therapy, have LDL-C  $\leq$  1.81 mmol/L or who are statin intolerant and have LDL-C  $\geq$  2.59 mmol/L, have been randomized to either pemafibrate therapy (0.2 mg twice daily) or placebo, with an intention to follow up over 3.75 years.

### Newer Agents Being Tested (See Also Table 1)

Over recent years, there has been a marked increase in effective drug therapies for dyslipidemia. Further to the progress that has already been made, new agents continue to be trialed for safety and efficacy. The REDUCE-IT trial published earlier this year demonstrated a primary endpoint event occurring in 17.2% of patients treated with 2 g of icosapent ethyl (an eicosapentaenoic acid (EPA) ethyl ester used to lower TG levels), compared with 22.0% of a placebo group (HR 0.75; 95% CI 0.68 to 0.83;  $p < 0.001$ ). However, more patients were hospitalized for atrial fibrillation and had significant bleeding events in the treatment group than in the placebo group, although none were fatal [34]. Also, the actual effect on TG was extremely modest, such that many feel this drug is not working via lipid lowering per se but potentially via other mechanisms.

Similarly for LDL-C lowering, the CLEAR-Harmony trial published in March demonstrated significant LDL-C reduction with bempedoic acid, an ATP citrate lyase inhibitor, at 12 weeks. Treatment reduced the mean LDL cholesterol level  $-16.5\%$  from baseline (difference vs. placebo in change from baseline,  $-18.1$  percentage points; 95% CI,  $-20.0$  to  $-16.1$ ;  $p < 0.001$ ). The safety profile was also favorable [35]. This reduction in cholesterol is modest, and it is likely that this agent will be combined with other drugs so that an era of dual or combined lipid-lowering drugs will soon be common place.

### What the Guidelines Recommend on When to Start Lipid Lowering and the Remaining Uncertainties

Following the 2004 CARDS study, such was the strength of evidence reducing CVD risk with the use of statins that there was an opinion that people with T2DM should be screened to be excluded from statin therapy. Most guidelines use a goal-centered approach, aiming to lower LDL-C as the primary

target of dyslipidemia in T2DM. The recommended goal is usually to titrate LDL-C to  $< 1.8$  mmol/L in secondary prevention, with consideration given to total CV risk. That noted, recent ESC diabetes and prediabetes, as well as dyslipidemia guidelines, have suggested even lower targets in those with diabetes and very high CVD risk to an LDL-C below 1.4 mmol/l [36, 37]. Total cholesterol should be titrated to  $< 4$  mmol/L, and a TG level of  $< 1.5$  mmol/L. In most countries, those with T2DM aged  $> 40$  years are recommended for statins, regardless of baseline cholesterol. Intensive lipid-lowering therapy with atorvastatin 80 mg is recommended for patients with diabetes and CVD. Only in England and Wales have doctors been told to revert to risk scoring before statins are recommended in T2DM. The NICE guidelines suggest offering atorvastatin 20 mg for the primary prevention of CVD to people with T2DM who have a 10% or greater 10-year risk of developing CVD, assessed using QRISK2. Whether such risk scoring leads less people with diabetes to receive statins will be interesting to examine.

Recently, the USA moved away from a targeted approach, with the ACC/AHA guidelines published in Nov 2013 recommending that in patients with T2DM [38], therapy should either be high-intensity statin therapy if the patient with diabetes is considered high risk, or moderate-intensity therapy if low risk. This approach is broadly similar to ESC/EAS guidelines published in 2016 although they use targets to differentiate treatment intensities for patients with diabetes at differing risks for CVD. For example, those at high risk, LDL-C target  $< 2.6$  mmol/L ( $< 100$  mg/dL) or a reduction of at least 50% if the baseline is recommended, whereas for those considered at very high risk, an LDL-C target of  $< 1.8$  mmol/L is suggested [38], although as noted above, targets have lowered further in the recent ESC lipid guidelines. In general, therefore, nearly all patients with T2DM should be on statins at some point in their lives. Notably, those who develop T2DM when younger [39•] have even greater excess CVD events and mortality and so absolute health gains from statins are likely greater. By contrast, those who develop diabetes in their 80s lose virtually no life years if compared to those without diabetes at the same age [39•].

### Type 1 Diabetes: Are We Undertreating with Statins?

It is curious to note that on average, people who develop T1DM lose around 12 years of life expectancy, whereas those who develop T2DM lose on average around 6 years. This might surprise many, given that people with T2DM are often more obese and have more lipid abnormalities than those with T1DM. However, the much earlier development of T1DM and the longer exposure to hyperglycemia per se is of paramount importance to future CV risk, and as such, people with T1DM experience on average 30 years more of hyperglycemia exposure. The pattern of disease risk is also worth

examining, with potentially more atherosclerotic disease in T1DM driven by hyperglycemia and ensuing early renal damage versus what we now believe to be a combination of excess atherosclerosis and hemodynamically driven cardiorenal disease in T2DM, the latter driven more in part by the obesity and associated metabolic perturbances. Yet, clinical experience shows far less statin is prescribed to those with T1DM. We have also shown that those who develop T1DM when younger have the greatest excess risks for CVD [40]. Consequently, rather than waiting until a patient with T1DM develops evidence of renal disease before commencing statins, it may be prudent to consider statins for most with T1DM above the age of say 30 years rather than the 40-year age threshold in T2DM. This may be a controversial suggestion, but there is plentiful evidence statins are safe in such age groups and that they lower cholesterol well [41]. There is also less to fear from statin use in women than imagined since there is no clinical evidence of teratogenicity, although good practice would be cessation of statin in those women aiming for pregnancy.

### Statin Side Effects: Retry Statin Then Aim for Lower Doses or Alternative Statins

Statin are, sadly, much maligned in the media for causing considerable harm, in particular muscle aches. However, the trial experience is vastly different with a number needed to harm of 1 in 2000 to develop actual myositis [42]. Observational data show us that in fact well over two-thirds of people with apparent side effects are able to take the same dose of statin when repeated without side effects. If side effects do return, then lower dose of the same statin often works. There is also evidence for lower side effect rates with pravastatin or low dose rosuvastatin, and these should be considered for patients complaining of side effects on lower dose atorvastatin or simvastatin. Doses as low as rosuvastatin 2.5 mg twice a week can be given to lend confidence to patients worried about statin side effects. The dose can then be titrated up in step wise fashion in the vast majority who tolerate this regimen. The point being that there is no reason for the vast majority of patients, whether or not they have diabetes, who require statins not to be on them. A specific statement on statin intolerance in line with these comments was published in 2015 [43].

### Metabolic Control and Lipid Levels

In the clinical setting, there is some evidence that raised TG levels are associated with poor glycemic control. A large, Chinese-based study published last year showed that in 20,108 patients being treated with insulin for T2DM, elevated TGs were strongly associated with inadequate glycemic control; adjusted ORs (95% CIs) of having an  $HbA_{1c} \geq 53$  mmol/mol were 1.06 (0.98, 1.15), 1.35 (1.23, 1.48), and 3.12 (2.76, 3.53) for those with

triglyceride levels in ranges of 1.70 to 2.29, 2.30, to 3.39, and  $\geq 3.40$  mmol/L, respectively, compared with those with triglyceride levels of  $< 1.70$  mmol/L [44]. Thus, if TG levels are substantially elevated in patients with T2DM despite lipid-lowering therapy, improvements in glycaemic control, if abnormal, will help improve lipid levels.

### Conclusion

Diabetes is a major CVD risk factor, with plentiful evidence for the benefits of multifactorial risk targeting (see Table 2 for summary points). Statins lower both cholesterol and to a lesser extent TG levels, and they remain the cornerstone for CVD risk reduction in diabetes. The vast majority of patients with T2DM should be offered statin therapy at some point in their lives, except perhaps those who develop the disease when very old. At the very least, most should be on a moderate statin dose, with those at highest risk or with established disease given intensive statins and aiming for lower target LDL-C or Non-HDL-C levels. Ezetimibe has emerged as an excellent add-on option when targets are not reached with maximally tolerated statin dose or in the very small minority of cases

**Table 2** Summary points on lipid patterns and management in patients with diabetes

- Diabetes patients have a more atherogenic lipid profile which contributes to their excess risk for CVD—this is especially the case in younger onset type 2 diabetes who tend to be more obese at diagnosis and have higher triglyceride and lower HDL-c levels and therefore higher non-HDL-c.
- Statins are first-line treatments in diabetes with the vast majority benefiting from statins, and the majority of countries recommend statins in diabetes without the need for a risk score.
- As in the general population, if side effects occur with statins in patients with diabetes, they should be advised to retry the same statin at the same dose since most will be fine on retreat. If not, the dose can be lowered or alternative statin tried. Patients should be advised that the vast majority can take some form of statin without issues and trial and error will achieve the right statin for them.
- Ezetimibe is an excellent add-on choice for patients with diabetes when they are not at target despite maximally tolerated statin dose or whether they are truly intolerant.
- PCSK9 inhibitors work just as well in diabetes as in those without diabetes and with no evidence of glycemia dysregulation. They should be reserved for patients with diabetes are exceptionally high risk of CVD and elevated LDL-c levels despite maximally tolerated statin plus ezetimibe.
- If patients with diabetes continue to demonstrate higher triglyceride levels despite statin therapy, then first consider secondary causes such as significant hyperglycemia or obesity. Fibrates can be considered in such patients to lower pancreatitis risk but notably, whether currently available fibrates lower CVD risk remains an open question.
- Finally, as younger patients with both type 2 and type 1 diabetes lose the most years of life expectancy from their diabetes, more such patients should be offered statins earlier in the course of their lives. Future guidelines need to consider newer evidence with respect to age of diabetes onset and lifetime risks.

when no statin is tolerated at any dose. For those at exceptionally high risk and continuing high LDL-c levels despite statins and ezetimibe, PCSK9 inhibitors are now available and help lower risk. The evidence base for triglyceride-lowering agents remains incomplete, but ongoing trials should help improve evidence base. If patients with diabetes on statins have continuing high triglyceride levels well above 5–10 mmol/l, then fibrates may help. However poor glycemic control should first be considered as a contributor and improved if possible. Finally, younger people with T2DM and more people with T1DM than is currently the case would benefit from statins given recent evidence showing far greater risk and loss of life years. Such patients have greatest excess risks for adverse CVD outcomes and experience greater life years lost. Therefore, they have the most to gain from such therapies. Future guidelines should consider this newer evidence.

### Compliance with Ethical Standards

**Conflict of Interest** Naveed Sattar has consulted for or been on the Speakers Bureau for Amgen, AstraZeneca, Boehringer Ingelheim (he also received an Institutional research grant from Boehringer Ingelheim), Eli Lilly, Janssen, NAPP Pharmaceuticals, Novo Nordisk, and Sanofi.

Anne Sillars declares no conflict of interest.

**Human and Animal Rights and Informed Consent** This article does not contain any studies with human or animal subjects performed by any of the authors.

**Open Access** This article is distributed under the terms of the Creative Commons Attribution 4.0 International License (<http://creativecommons.org/licenses/by/4.0/>), which permits unrestricted use, distribution, and reproduction in any medium, provided you give appropriate credit to the original author(s) and the source, provide a link to the Creative Commons license, and indicate if changes were made.

### References

Papers of particular interest, published recently, have been highlighted as:

- Of importance
- Of major importance

1. Fox CS, Pencina MJ, Wilson PW, Paynter NP, Vasan RS, D'Agostino RB Sr. Lifetime risk of cardiovascular disease among individuals with and without diabetes stratified by obesity status in the Framingham heart study. *Diabetes Care*. 2008;31:1582–4.
2. Kannel WB, McGee DL. Diabetes and cardiovascular disease. The Framingham study. *JAMA*. 1979;241:2035–8.
3. Turner RC, Millns H, Neil HA, Stratton IM, Manley SE, Matthews DR, et al. Risk factors for coronary artery disease in non-insulin dependent diabetes mellitus: United Kingdom prospective diabetes study (UKPDS: 23). *BMJ*. 1998;316:823–8.
4. Boden G. Role of fatty acids in the pathogenesis of insulin resistance and NIDDM. *Diabetes*. 1997;46:3–10.

5. Kelley DE, Simoneau JA. Impaired free fatty acid utilization by skeletal muscle in non-insulin-dependent diabetes mellitus. *J Clin Invest*. 1994;94:2349–56.
6. Austin MA, Breslow JL, Hennekens CH, Buring JE, Willett WC, Krauss RM. Low-density lipoprotein subclass patterns and risk of myocardial infarction. *JAMA*. 1988;260:1917–21.
7. Watson TD, Caslake MJ, Freeman DJ, Griffin BA, Hinnie J, Packard CJ, et al. Determinants of LDL subfraction distribution and concentrations in young normolipidemic subjects. *Arterioscler Thromb*. 1994;14:902–10.
8. Galeano NF, Milne R, Marcel YL, Walsh MT, Levy E, Ngu'yen TD, et al. Apoprotein B structure and receptor recognition of triglyceride-rich low density lipoprotein (LDL) is modified in small LDL but not in triglyceride-rich LDL of normal size. *J Biol Chem*. 1994;269:511–9.
9. Bjornheden T, Babyi A, Bondjers G, Wiklund O. Accumulation of lipoprotein fractions and subfractions in the arterial wall, determined in an in vitro perfusion system. *Atherosclerosis*. 1996;123:43–56.
10. Chait A, Brazg RL, Tribble DL, Krauss RM. Susceptibility of small, dense, low-density lipoproteins to oxidative modification in subjects with the atherogenic lipoprotein phenotype, pattern B. *Am J Med*. 1993;94:350–6.
11. Lamarche B, Despres JP, Moorjani S, Cantin B, Dagenais GR, Lupien PJ. Triglycerides and HDL-cholesterol as risk factors for ischemic heart disease. Results from the Quebec cardiovascular study. *Atherosclerosis*. 1996;119:235–45.
12. Ference BA, Kastelein JJP, Ray KK, Ginsberg HN, Chapman MJ, Packard CJ, et al. Association of triglyceride-lowering LPL variants and LDL-C-lowering LDLR variants with risk of coronary heart disease. *JAMA*. 2019;321:364–73.
13. Welsh C, Celis-Morales CA, Brown R, Mackay DF, Lewsey J, Mark PB, et al. Comparison of conventional lipoprotein tests and apolipoproteins in the prediction of cardiovascular disease. *Circulation*. 2019;140(7):542–52. <https://doi.org/10.1161/CIRCULATIONAHA.119.041149>.
14. Efficacy and safety of cholesterol-lowering treatment: prospective meta-analysis of data from 90 056 participants in 14 randomised trials of statins. *Lancet*. 2005;366:1267–78.
15. Cholesterol Treatment Trialists' C, Baigent C, Blackwell L, Emberson J, Holland LE, Reith C, et al. Efficacy and safety of more intensive lowering of LDL cholesterol: a meta-analysis of data from 170,000 participants in 26 randomised trials. *Lancet*. 2010;376:1670–81.
16. Newman CB, Preiss D, Tobert JA, Jacobson TA, Page RL 2nd, Goldstein LB, et al. Statin safety and associated adverse events: a scientific statement from the American Heart Association. *Arterioscler Thromb Vasc Biol*. 2019;39:e38–81.
17. Kastelein JJ, Akdim F, Stroes ES, Zwinderman AH, Bots ML, Stalenhoef AF, et al. Simvastatin with or without ezetimibe in familial hypercholesterolemia. *N Engl J Med*. 2008;358:1431–43.
18. Goldberg RB, Guyton JR, Mazzone T, Weinstock RS, Polis A, Edwards P, et al. Ezetimibe/simvastatin vs atorvastatin in patients with type 2 diabetes mellitus and hypercholesterolemia: the VYTAL study. *Mayo Clin Proc*. 2006;81:1579–88.
19. Pearson TA, Denke MA, McBride PE, Battisti WP, Brady WE, Palmisano J. A community-based, randomized trial of ezetimibe added to statin therapy to attain NCEP ATP III goals for LDL cholesterol in hypercholesterolemic patients: the ezetimibe add-on to statin for effectiveness (EASE) trial. *Mayo Clin Proc*. 2005;80:587–95.
20. Kastelein JJP, Akdim F, Stroes ESG, Zwinderman AH, Bots ML, Stalenhoef AFH, et al. Simvastatin with or without ezetimibe in familial hypercholesterolemia. *N Engl J Med*. 2008;358:1431–43.

21. Cannon CP, Blazing MA, Giugliano RP, McCagg A, White JA, Theroux P, et al. Ezetimibe added to statin therapy after acute coronary syndromes. *N Engl J Med*. 2015;372:2387–97.
22. •• Giugliano RP, Cannon CP, Blazing MA, Nicolau JC, Corbalán R, Špinar J, et al. Benefit of adding ezetimibe to statin therapy on cardiovascular outcomes and safety in patients with versus without diabetes mellitus. *Circulation*. 2018;137:1571–82 **Suggests ezetimibe may have particular benefit in diabetes patients, though further trials are needed to support this supposition. Nevertheless, ezetimibe presents an excellent second line option for many patients with diabetes.**
23. Sabatine MS, Giugliano RP, Keech AC, Honarpour N, Wiviott SD, Murphy SA, et al. Evolocumab and clinical outcomes in patients with cardiovascular disease. *N Engl J Med*. 2017;376:1713–22.
24. • Sabatine MS, Leiter LA, Wiviott SD, Giugliano RP, Deedwania P, De Ferrari GM, et al. Cardiovascular safety and efficacy of the PCSK9 inhibitor evolocumab in patients with and without diabetes and the effect of evolocumab on glycaemia and risk of new-onset diabetes: a prespecified analysis of the FOURIER randomised controlled trial. *Lancet Diabetes Endocrinol*. 2017;5:941–50 **Shows benefit of PCSK9 inhibitor in patients with diabetes.**
25. Schwartz GG, Steg PG, Szarek M, Bhatt DL, Bittner VA, Diaz R, et al. Alirocumab and cardiovascular outcomes after acute coronary syndrome. *N Engl J Med*. 2018;379:2097–107.
26. Ray KK, Colhoun H, Szarek M, Baccara-Dinet M, Bhatt DL, Bittner V, et al. Alirocumab and cardiovascular outcomes in patients with acute coronary syndrome (ACS) and diabetes—prespecified analyses of ODYSSEY OUTCOMES. *Diabetes*. 2018;67:6-LB.
27. Sliz E, Kettunen J, Holmes MV, Williams CO, Boachie C, Wang Q, et al. Metabolomic consequences of genetic inhibition of PCSK9 compared with statin treatment. *Circulation*. 2018;138:2499–512.
28. Frick MH, Elo O, Haapa K, Heinonen OP, Heinsalmi P, Helo P, et al. Helsinki Heart study: primary-prevention trial with gemfibrozil in middle-aged men with dyslipidemia. *N Engl J Med*. 1987;317:1237–45.
29. Effects of long-term fenofibrate therapy on cardiovascular events in 9795 people with type 2 diabetes mellitus (the FIELD study): randomised controlled trial. *Lancet*. 2005;366:1849–61.
30. Group AS, Ginsberg HN, Elam MB, Lovato LC, Crouse JR 3rd, Leiter LA, et al. Effects of combination lipid therapy in type 2 diabetes mellitus. *N Engl J Med*. 2010;362:1563–74.
31. Jun M, Foote C, Lv J, Neal B, Patel A, Nicholls SJ, et al. Effects of fibrates on cardiovascular outcomes: a systematic review and meta-analysis. *Lancet*. 2010;375:1875–84.
32. Davidson Michael H, Rosenson Robert S, Maki Kevin C, Nicholls Stephen J, Ballantyne Christie M, Mazzone T, et al. Effects of fenofibric acid on carotid intima-media thickness in patients with mixed dyslipidemia on atorvastatin therapy. *Arterioscler Thromb Vasc Biol*. 2014;34:1298–306.
33. Pradhan AD, Paynter NP, Everett BM, Glynn RJ, Amarenco P, Elam M, et al. Rationale and design of the pemafibrate to reduce cardiovascular outcomes by reducing triglycerides in patients with diabetes (PROMINENT) study. *Am Heart J*. 2018;206:80–93.
34. Bhatt DL, Steg PG, Miller M, Brinton EA, Jacobson TA, Ketchum SB, et al. Cardiovascular risk reduction with icosapent ethyl for hypertriglyceridemia. *N Engl J Med*. 2019;380:11–22.
35. Ray KK, Bays HE, Catapano AL, Lalwani ND, Bloedon LT, Sterling LR, et al. Safety and efficacy of bempedoic acid to reduce LDL cholesterol. *N Engl J Med*. 2019;380:1022–32.
36. The Task Force for diabetes, pre-diabetes, and cardiovascular diseases of the European Society of Cardiology (ESC) and the European Association for the Study of Diabetes (EASD) Francesco Cosentino, Grant PJ, Aboyans V, Bailey CJ, Ceriello A, Delgado V, et al. 2019 ESC Guidelines on diabetes, pre-diabetes, and cardiovascular diseases developed in collaboration with the EASD. *Eur Heart J*. <https://doi.org/10.1093/eurheartj/ehz486>.
37. The Task Force for the management of dyslipidaemias of the European Society of Cardiology (ESC) and European Atherosclerosis Society (EAS), Mach F, Baigent C, Catapano AL, Koskinas KC, Casula M, et al. 2019 ESC/EAS Guidelines for the management of dyslipidaemias: lipid modification to reduce cardiovascular risk. *Eur Heart J*. <https://doi.org/10.1093/eurheartj/ehz455>.
38. Ray KK, Kastelein JJP, Matthijs Boekholdt S, Nicholls SJ, Khaw K-T, Ballantyne CM, et al. The ACC/AHA 2013 guideline on the treatment of blood cholesterol to reduce atherosclerotic cardiovascular disease risk in adults: the good the bad and the uncertain: a comparison with ESC/EAS guidelines for the management of dyslipidaemias 2011. *Eur Heart J*. 2014;35:960–8.
39. • Sattar N, Rawshani A, Franzen S, Rawshani A, Svensson AM, Rosengren A, et al. Age at diagnosis of type 2 diabetes mellitus and associations with cardiovascular and mortality risks. *Circulation*. 2019;139:2228–37 **Perhaps the most comprehensive study to show younger onset diabetes is more pathogenic and leads to great loss in life years.**
40. Rawshani A, Sattar N, Franzen S, Rawshani A, Hattersley AT, Svensson AM, et al. Excess mortality and cardiovascular disease in young adults with type 1 diabetes in relation to age at onset: a nationwide, register-based cohort study. *Lancet*. 2018;392:477–86.
41. Marcovecchio ML, Chiesa ST, Bond S, Daneman D, Dawson S, Donaghue KC, et al. ACE inhibitors and statins in adolescents with type 1 diabetes. *N Engl J Med*. 2017;377:1733–45.
42. Collins R, Reith C, Emberson J, Armitage J, Baigent C, Blackwell L, et al. Interpretation of the evidence for the efficacy and safety of statin therapy. *Lancet*. 2016;388:2532–61.
43. Stroes ES, Thompson PD, Corsini A, Vladutiu GD, Raal FJ, Ray KK, et al. Statin-associated muscle symptoms: impact on statin therapy-European Atherosclerosis Society Consensus Panel Statement on Assessment, Aetiology and Management. *Eur Heart J*. 2015;36(17):1012–22. <https://doi.org/10.1093/eurheartj/ehv043>.
44. Zheng D, Dou J, Liu G, Pan Y, Yan Y, Liu F, et al. Association between triglyceride level and glycemic control among insulin-treated patients with type 2 diabetes. *J Clin Endocrinol Metab*. 2018;104:1211–20.

**Publisher's Note** Springer Nature remains neutral with regard to jurisdictional claims in published maps and institutional affiliations.